



OHIO DEPARTMENT OF TRANSPORTATION

PLANNING & ENGINEERING DEPARTMENT, DISTRICT 4



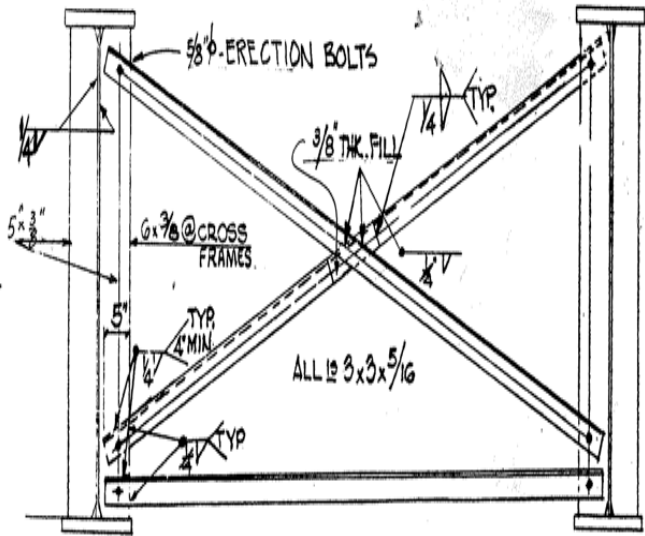
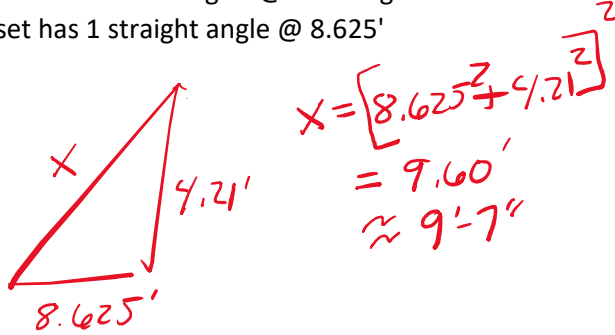
Project **ATB-11-6.29**
Desc **Heat Straightening - Secondary Member Quantities**

Calc By **CLG** Date **12/02/21**
Chk By **MJA** Date _____
PID/PROJ **105170**

3 Intermediate Sets of Crossframes Replaced

Each set has 2 cross angles @ 9.0' long

Each set has 1 straight angle @ 8.625'



INTERMEDIATE CROSSFRAME

Angles (L Shape): L3x3x5/16

Weight = 6.10 lb/ft per AISC Steel Manual, 14th ed.

Total weight per set = 169

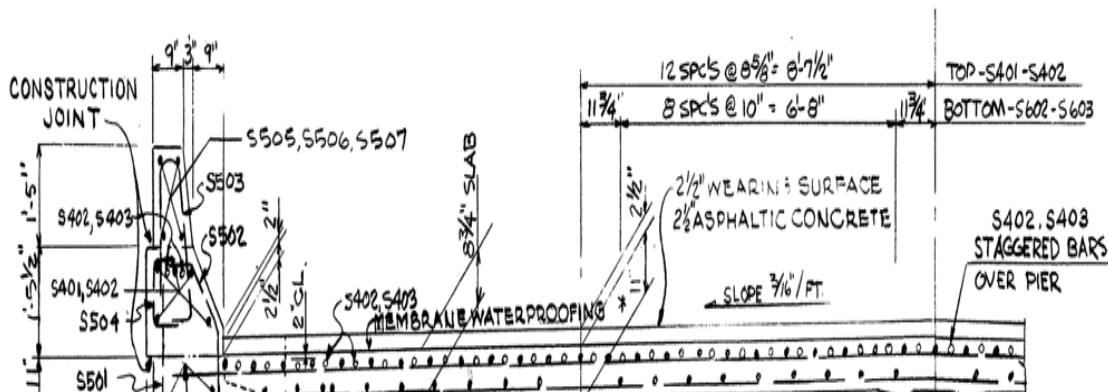
Total weight for all 3 sets = **508**

Crossframe Welds:



Total Weld length per cross member (ft) =	3.5
Total Weld length per straight member (ft)=	1.17
Total Weld length per cross frame (ft) =	4.67
Total Weld length for all 3 cross frames (ft) =	14

Stiffener Plate at Beam 3: 54" x 6" x 3/8"	2.25 SF
Weight (lb/SF)=	15.3
Total weight of Stiffener=	34.5
Total Weld length for Stiffener Plate (ft) =	11



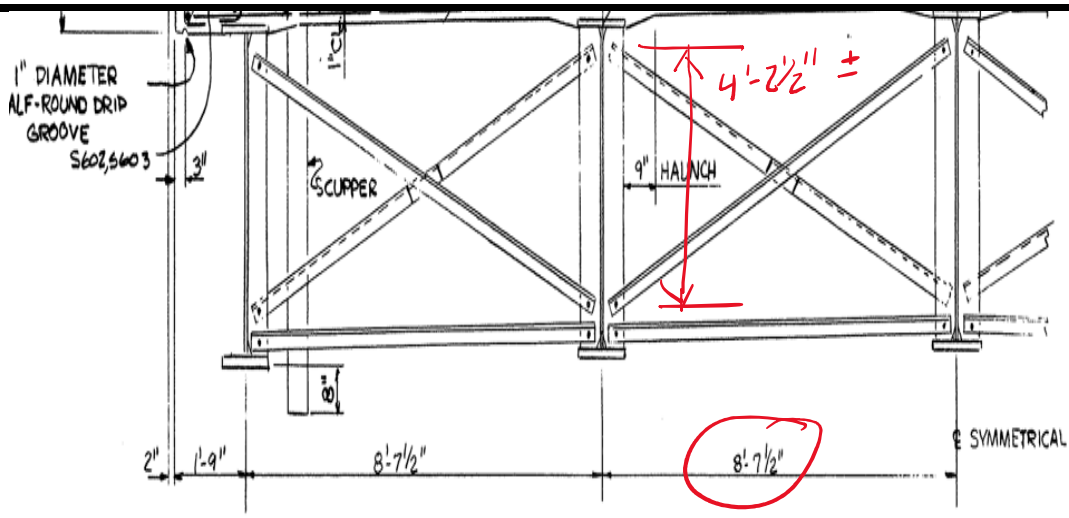


OHIO DEPARTMENT OF TRANSPORTATION
 PLANNING & ENGINEERING DEPARTMENT, DISTRICT 4

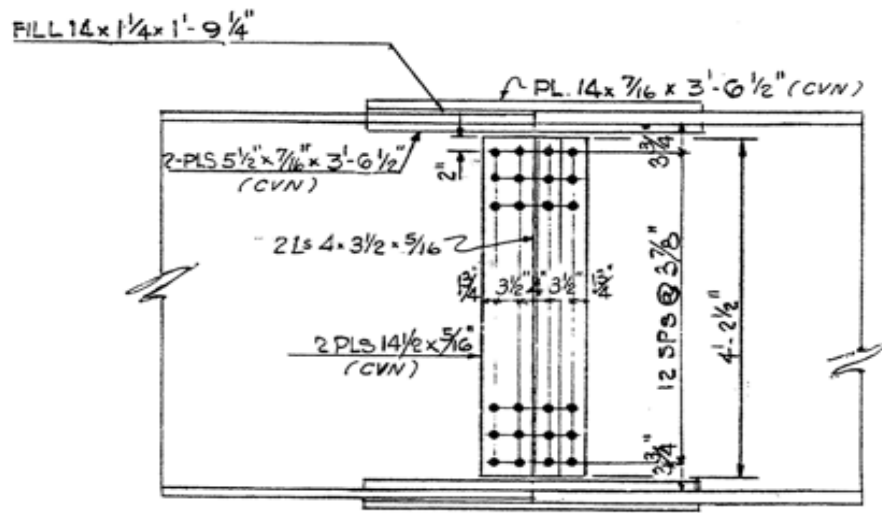


Project **ATB-11-6.29**
 Desc **Heat Straightening - Secondary Member Quantities**

Calc By **CLG** Date **12/02/21**
 Chk By **MJA** Date _____
 PID/PROJ **105170**



TYPICAL TRANSVERSE SECTION



FIELD SPLICE

ES.