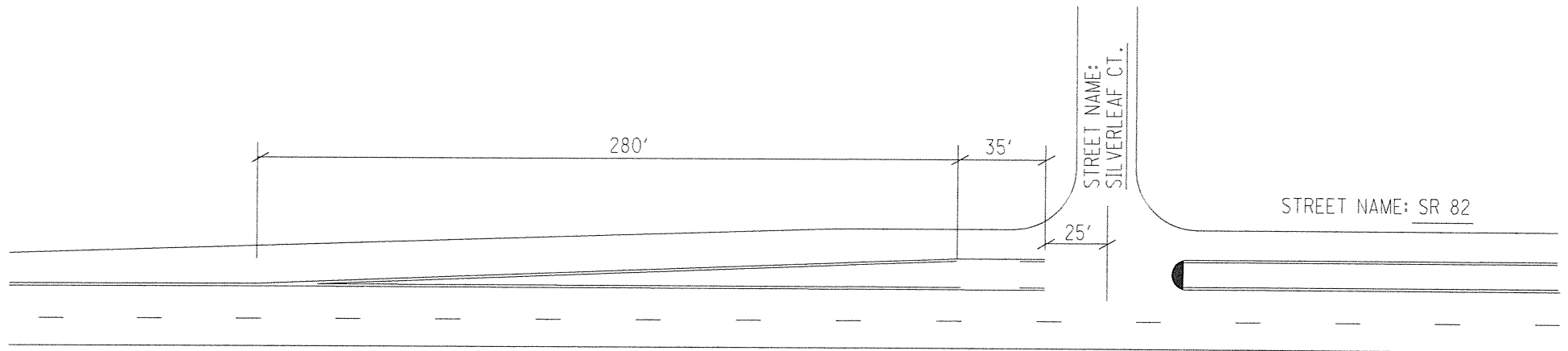
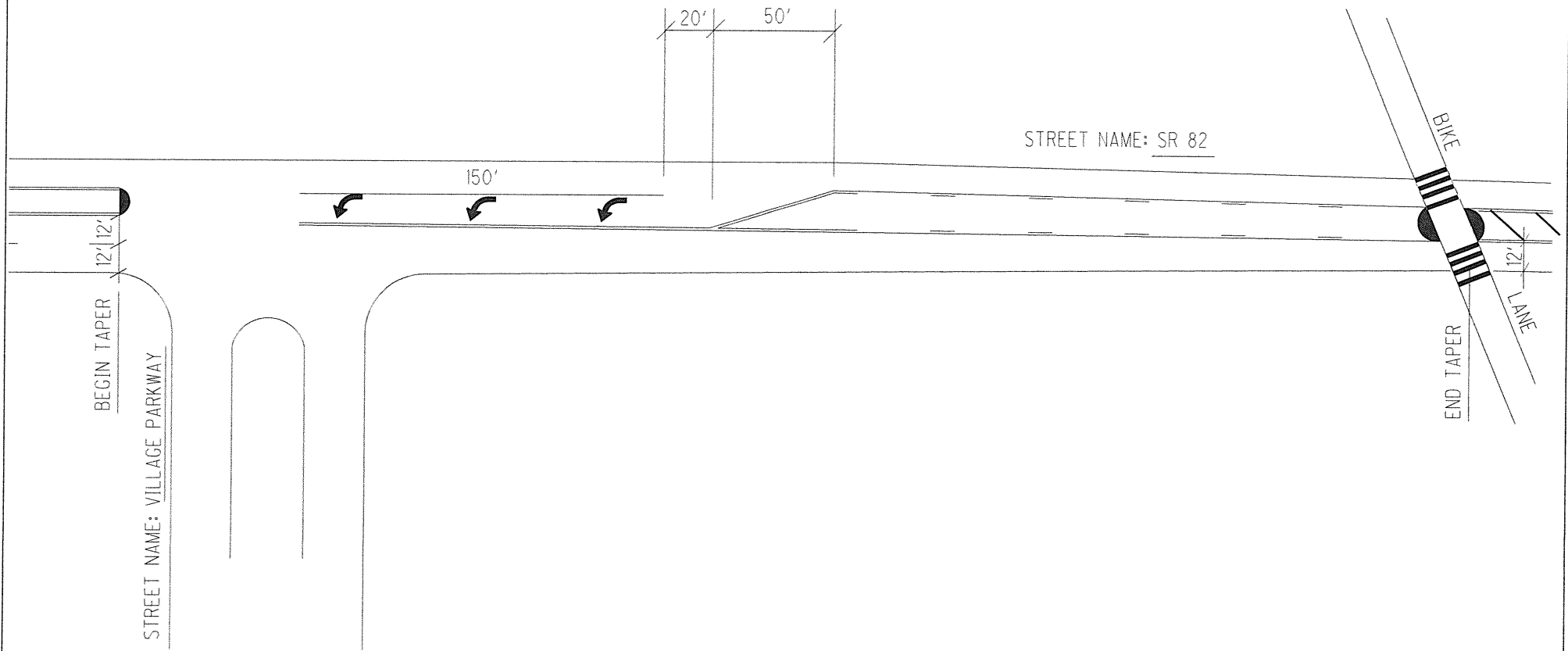


COUNTY:	SUMMIT
LOCATION:	S.R. 82 AT SILVERLEAF CT.
S.L.M.:	1.271
24" STOP LINE:	- L.F.
12" CROSSWALK LINE:	- L.F.
DOTTED LINE:	- L.F.
8" CHANNELIZING LINE:	- L.F.
12" CHANNELIZING LINE:	- L.F.
24" TRANSVERSE LINE (WT):	- L.F.
24" TRANSVERSE LINE (YW):	- L.F.
SYMBOL: 57 S.F. - ISLAND MARKING	



COUNTY:	SUMMIT	
LOCATION:	S.R. 82 AT VILLAGE PARKWAY	
S.L.M.:	1.331	
24" STOP LINE:	-	L.F.
12" CROSSWALK LINE:	200	L.F.
DOTTED LINE:	-	L.F.
8" CHANNELIZING LINE:	150	L.F.
12" CHANNELIZING LINE:	-	L.F.
24" TRANSVERSE LINE (WT):	-	L.F.
24" TRANSVERSE LINE (YW):	75	L.F.
SYMBOL: 169 S.F. ISLAND MKG'S, 3 - LEFT TURN ARROWS		



BEGIN TAPER 12' 12'

STREET NAME: VILLAGE PARKWAY

150'

20'

50'

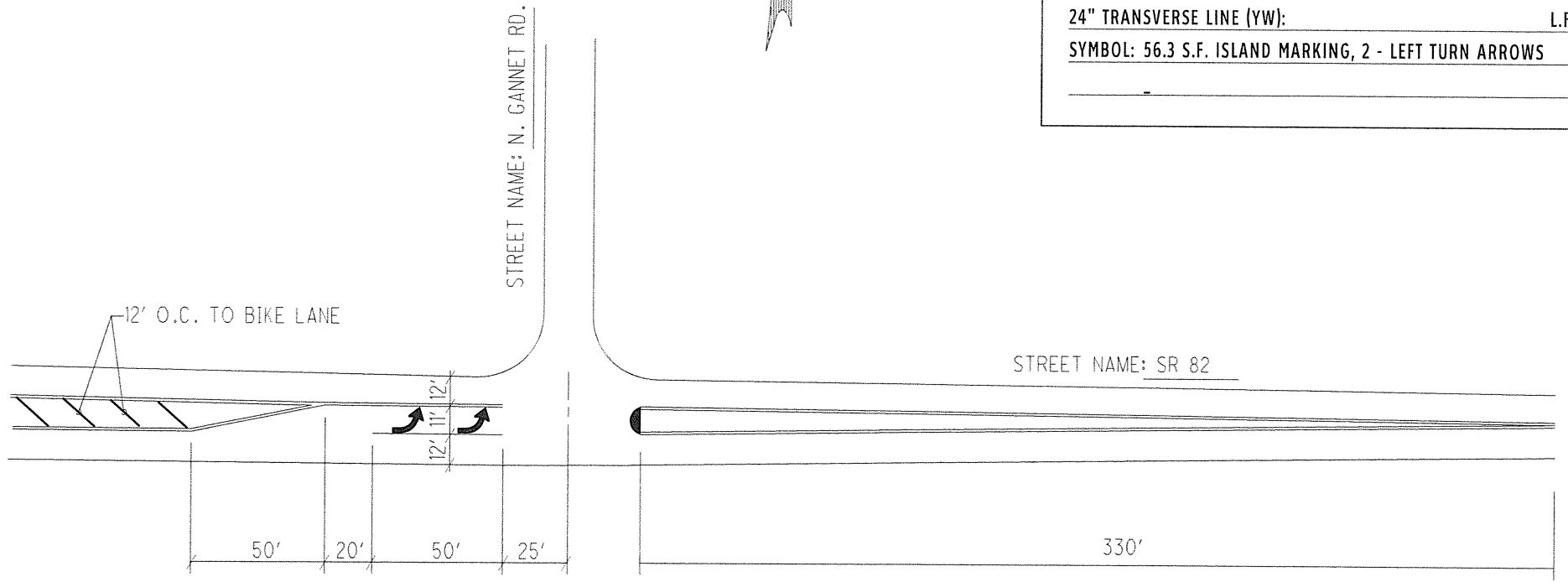
STREET NAME: SR 82

BIKE

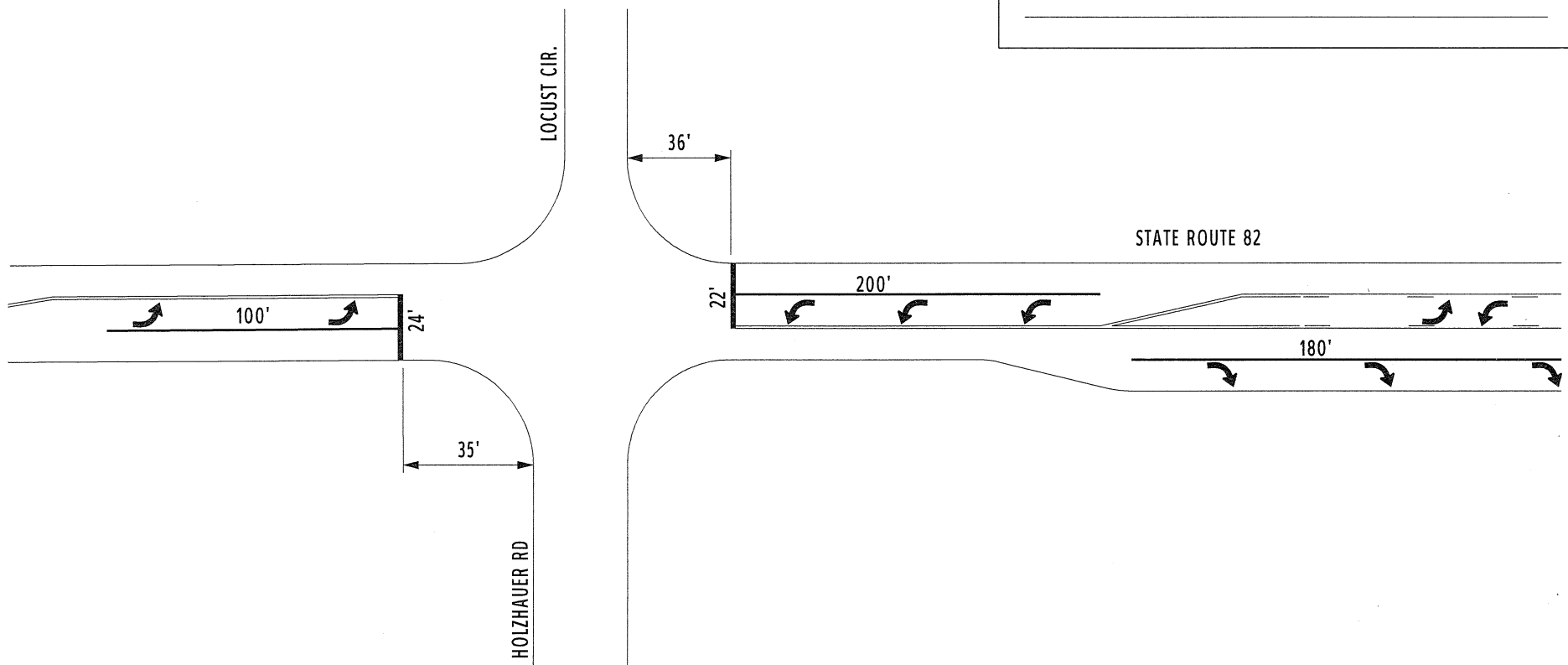
END TAPER

12' LANE

COUNTY:	SUMMIT	
LOCATION:	S.R. 82 AT GANNET RD.	
S.L.M.:	1.475	
24" STOP LINE:	-	L.F.
12" CROSSWALK LINE:	-	L.F.
DOTTED LINE:	-	L.F.
8" CHANNELIZING LINE:	50	L.F.
12" CHANNELIZING LINE:	-	L.F.
24" TRANSVERSE LINE (WT):	-	L.F.
24" TRANSVERSE LINE (YW):	-	L.F.
SYMBOL: 56.3 S.F. ISLAND MARKING, 2 - LEFT TURN ARROWS		



COUNTY:	SUMMIT	
LOCATION:	S.R. 82 AT HOLZHAUER	
S.L.M.:	1.624	
24" STOP LINE:	46	L.F.
12" CROSSWALK LINE:		L.F.
DOTTED LINE:		L.F.
8" CHANNELIZING LINE:	480	L.F.
12" CHANNELIZING LINE:		L.F.
24" TRANSVERSE LINE (WT):		L.F.
24" TRANSVERSE LINE (YW):		L.F.
SYMBOL: 6 - LEFT TURN ARROWS, 4 - RIGHT TURN ARROW		

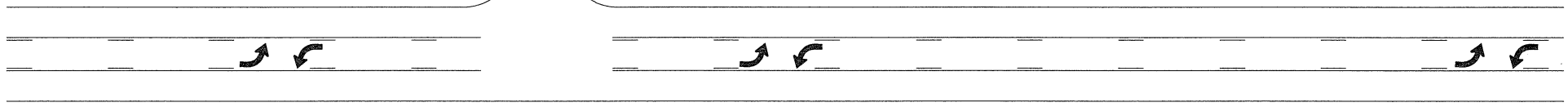
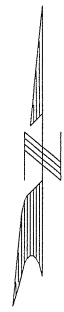


SAGAMORE SQUARE

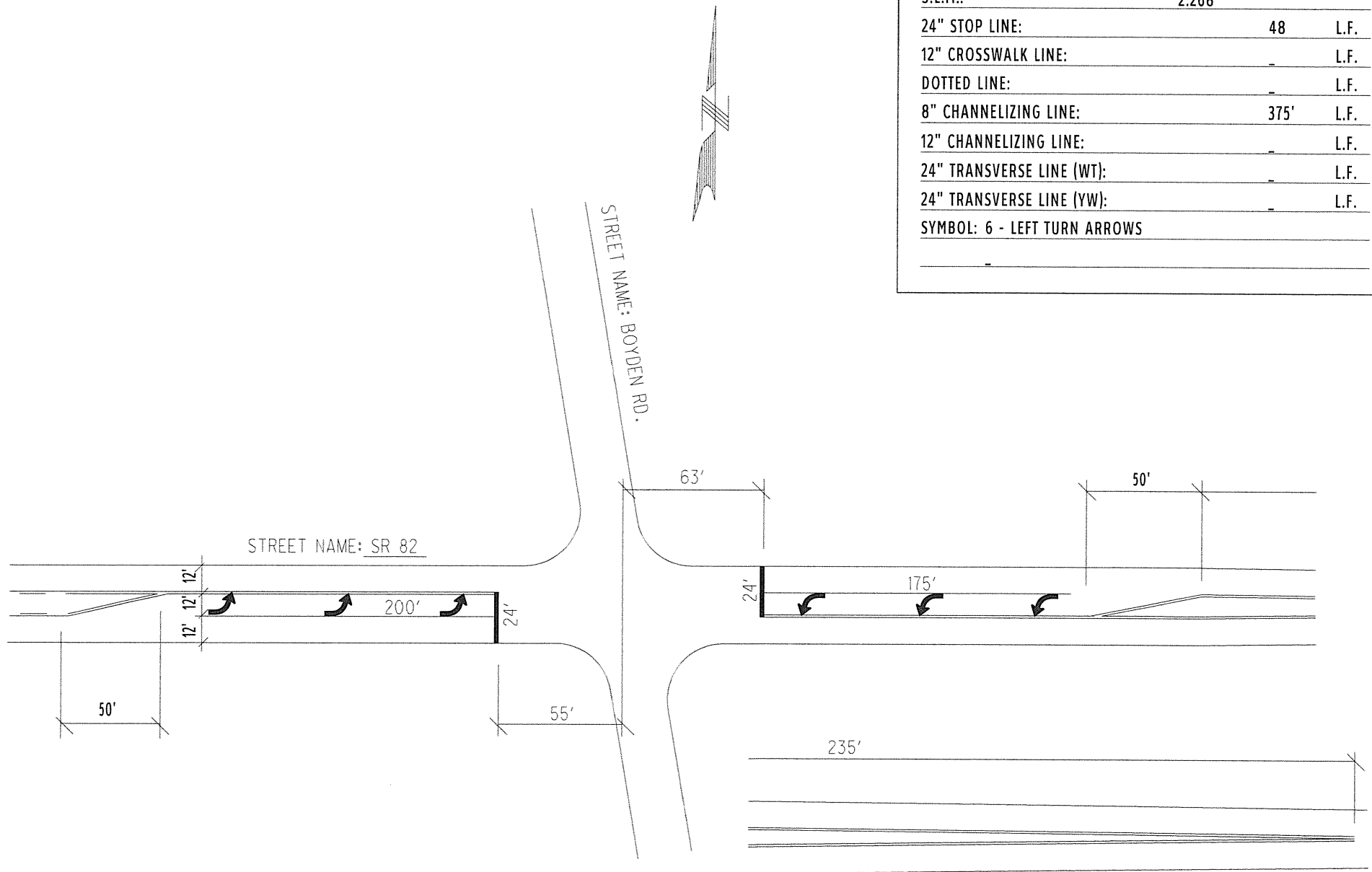
COUNTY:	SUMMIT
LOCATION:	S.R. 82 AT SAGAMORE HILLS BLVD.
S.L.M.:	1.804
24" STOP LINE:	L.F.
12" CROSSWALK LINE:	L.F.
DOTTED LINE:	L.F.
8" CHANNELIZING LINE:	L.F.
12" CHANNELIZING LINE:	L.F.
24" TRANSVERSE LINE (WT):	L.F.
24" TRANSVERSE LINE (YW):	L.F.
SYMBOL: 3 - LEFT TURN ARROWS, 3 RIGHT TURN ARROWS	

SAGAMORE HILLS BLVD.

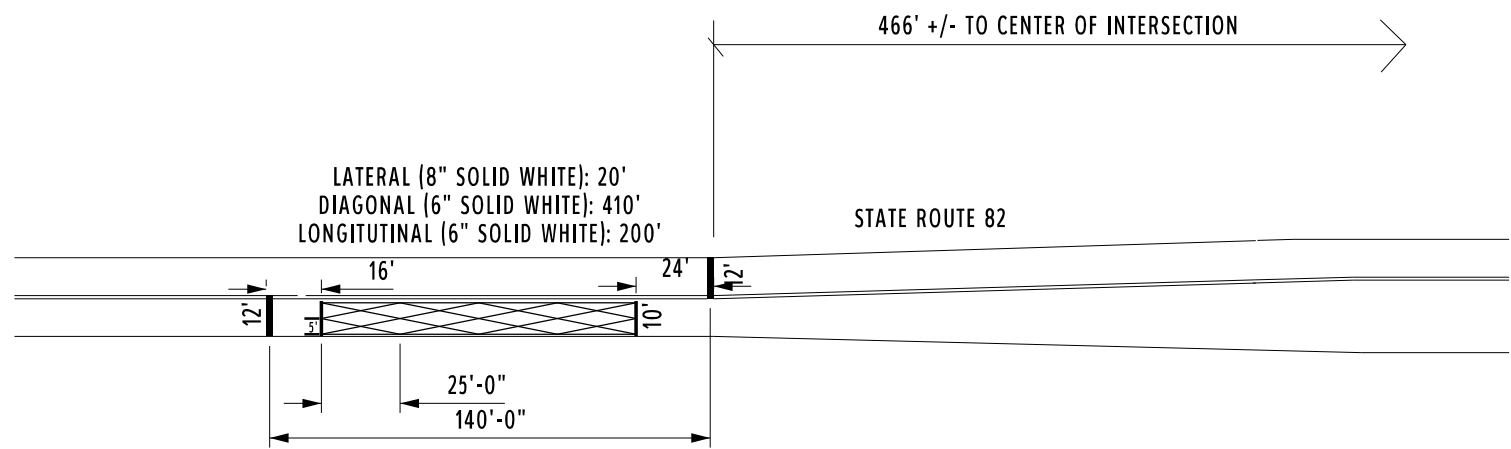
STATE ROUTE 82



COUNTY:	SUMMIT	
LOCATION:	S.R. 82 AT BOYDEN RD.	
S.L.M.:	2.268	
24" STOP LINE:	48	L.F.
12" CROSSWALK LINE:	-	L.F.
DOTTED LINE:	-	L.F.
8" CHANNELIZING LINE:	375'	L.F.
12" CHANNELIZING LINE:	-	L.F.
24" TRANSVERSE LINE (WT):	-	L.F.
24" TRANSVERSE LINE (YW):	-	L.F.
SYMBOL:	6 - LEFT TURN ARROWS	



COUNTY:	SUMMIT
LOCATION:	S.R. 82 AT NORTHFIELD FIRE DEPT.
S.L.M.:	2.684
24" STOP LINE:	24 L.F.
12" CROSSWALK LINE:	L.F.
DOTTED LINE:	L.F.
8" CHANNELIZING LINE:	L.F.
12" CHANNELIZING LINE:	L.F.
24" TRANSVERSE LINE (WT):	L.F.
24" TRANSVERSE LINE (YW):	L.F.
SYMBOL: DO NOT BLOCK INTERSECTION BOX -	
6" LINE 610', 8" LINE 20'	

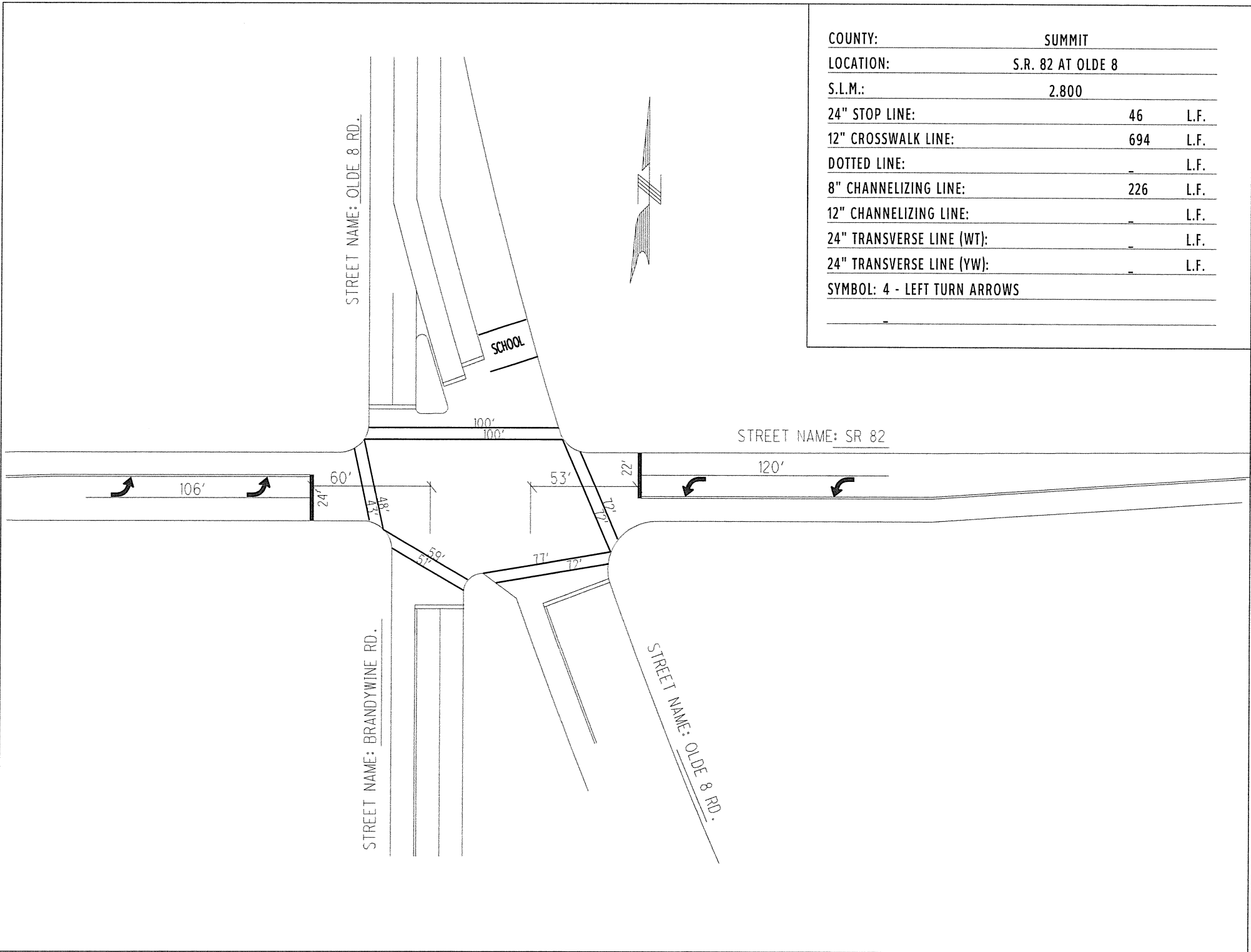


LATERAL (8" SOLID WHITE): 20'
 DIAGONAL (6" SOLID WHITE): 410'
 LONGITUTINAL (6" SOLID WHITE): 200'

466' +/- TO CENTER OF INTERSECTION

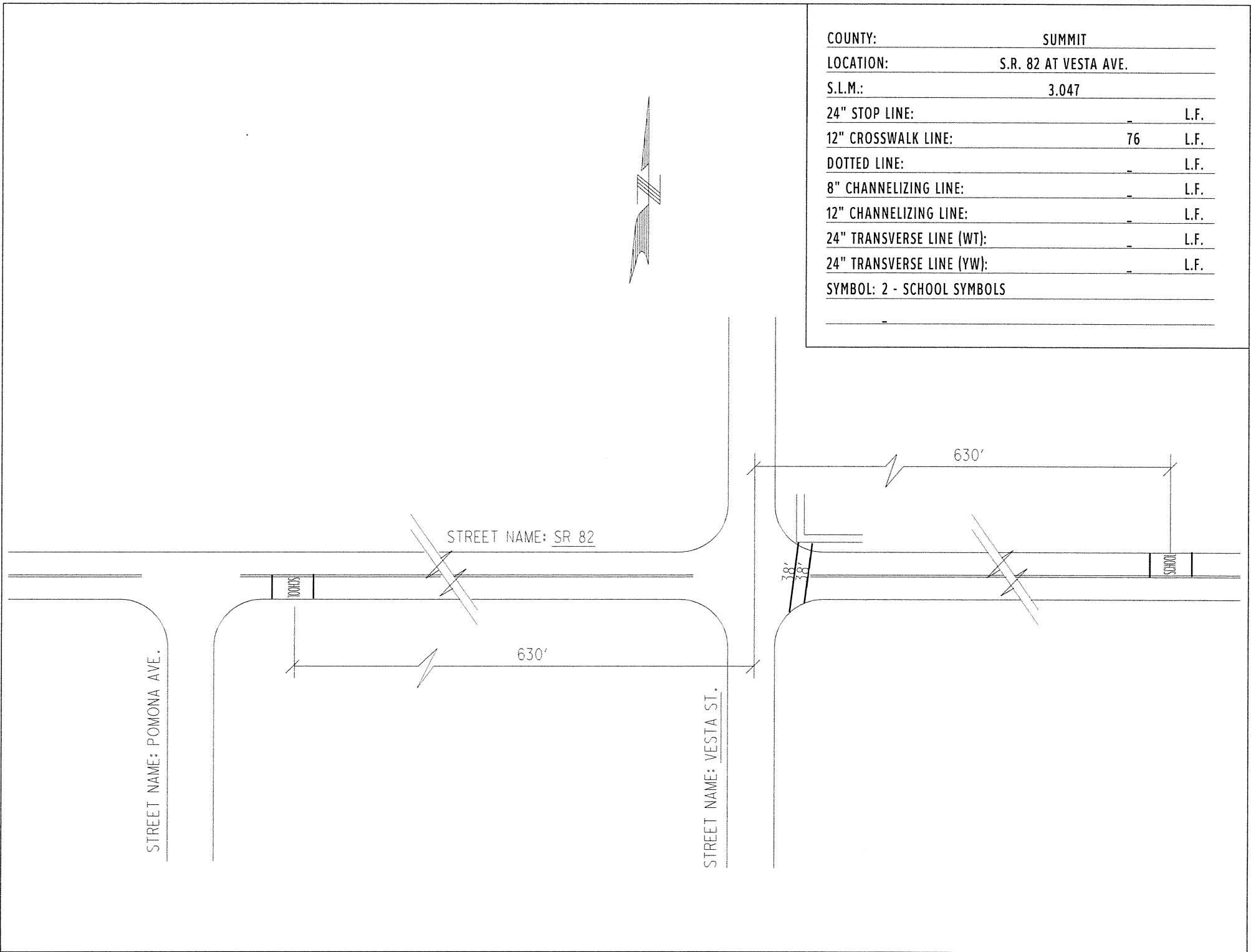
STATE ROUTE 82

NORTHFIELD CENTER
 TOWNSHIP FIRE DEPT.

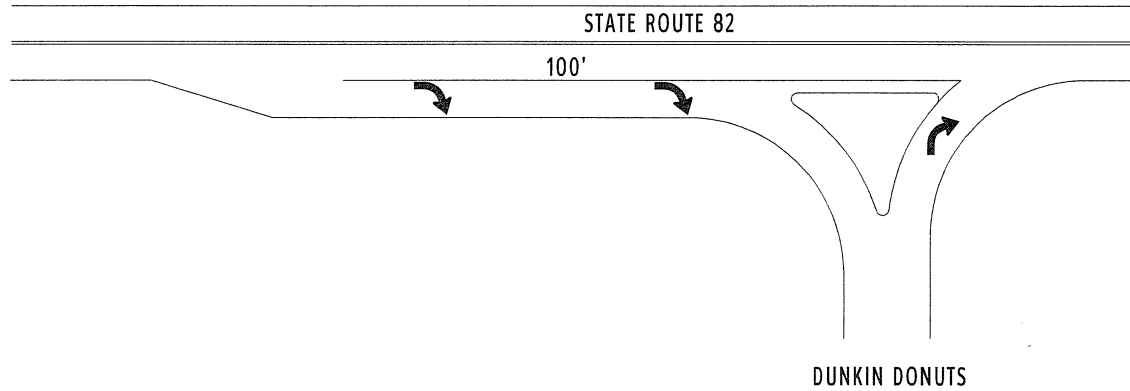


COUNTY:	SUMMIT
LOCATION:	S.R. 82 AT OLDE 8
S.L.M.:	2.800
24" STOP LINE:	46 L.F.
12" CROSSWALK LINE:	694 L.F.
DOTTED LINE:	- L.F.
8" CHANNELIZING LINE:	226 L.F.
12" CHANNELIZING LINE:	- L.F.
24" TRANSVERSE LINE (WT):	- L.F.
24" TRANSVERSE LINE (YW):	- L.F.
SYMBOL:	4 - LEFT TURN ARROWS

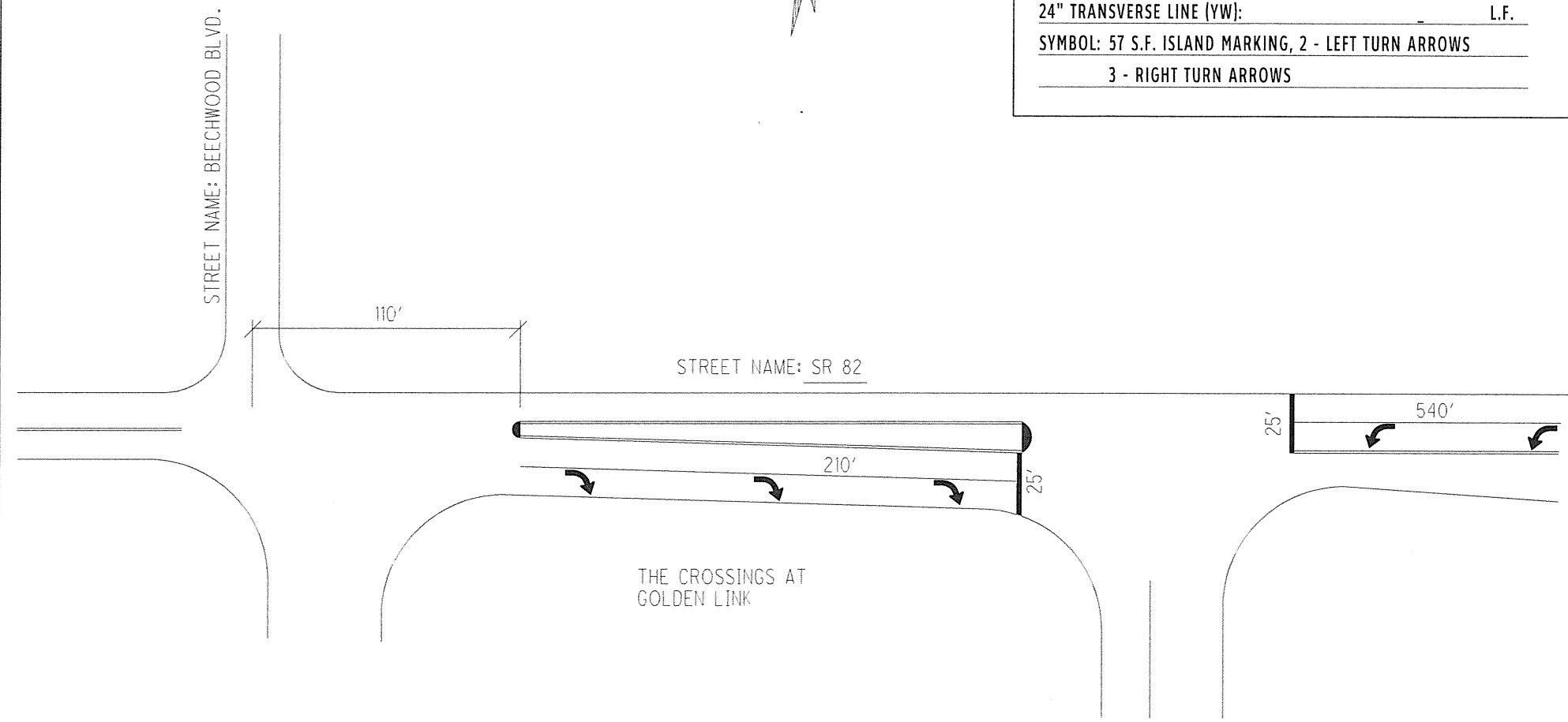
COUNTY:	SUMMIT	
LOCATION:	S.R. 82 AT VESTA AVE.	
S.L.M.:	3.047	
24" STOP LINE:	-	L.F.
12" CROSSWALK LINE:	76	L.F.
DOTTED LINE:	-	L.F.
8" CHANNELIZING LINE:	-	L.F.
12" CHANNELIZING LINE:	-	L.F.
24" TRANSVERSE LINE (WT):	-	L.F.
24" TRANSVERSE LINE (YW):	-	L.F.
SYMBOL: 2 - SCHOOL SYMBOLS		



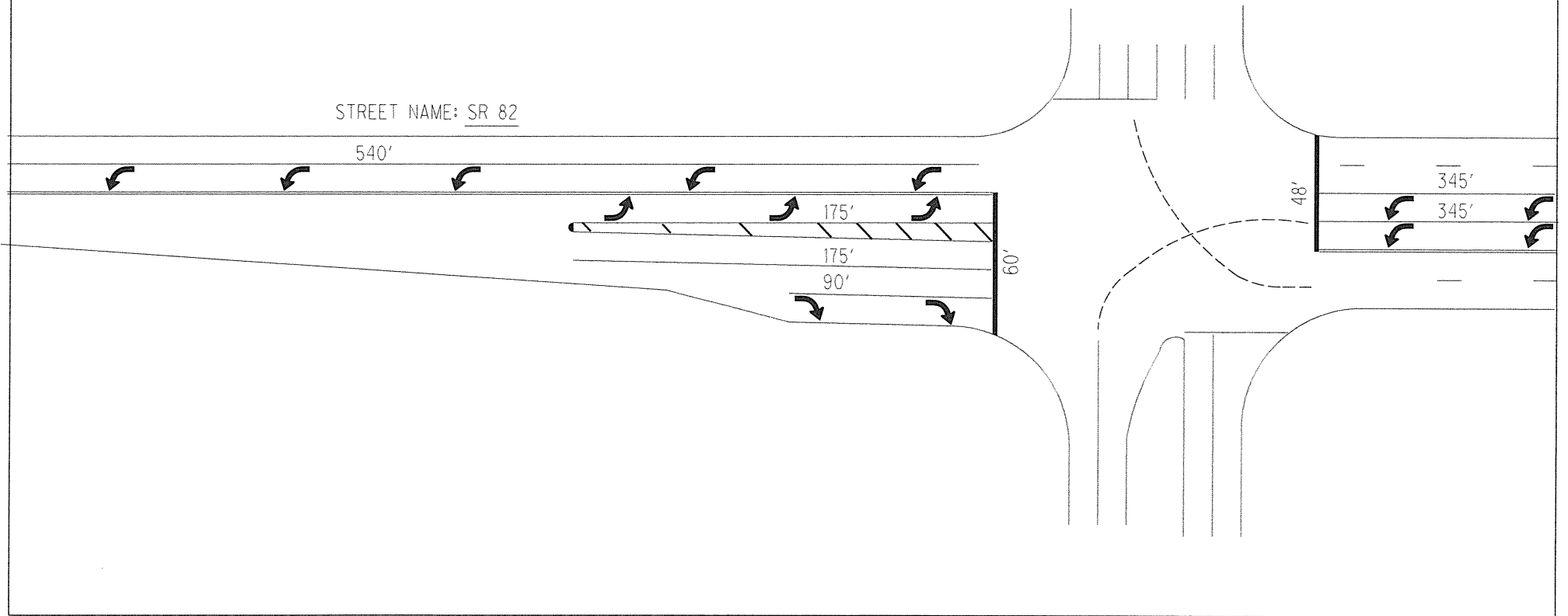
COUNTY:	SUMMIT	
LOCATION:	S.R. 82 AT DUNKIN DONUTS	
S.L.M.:	3.07	
24" STOP LINE:		L.F.
12" CROSSWALK LINE:		L.F.
DOTTED LINE:		L.F.
8" CHANNELIZING LINE:	100	L.F.
12" CHANNELIZING LINE:		L.F.
24" TRANSVERSE LINE (WT):		L.F.
24" TRANSVERSE LINE (YW):		L.F.
SYMBOL: 3 - RIGHT TURN ARROWS		



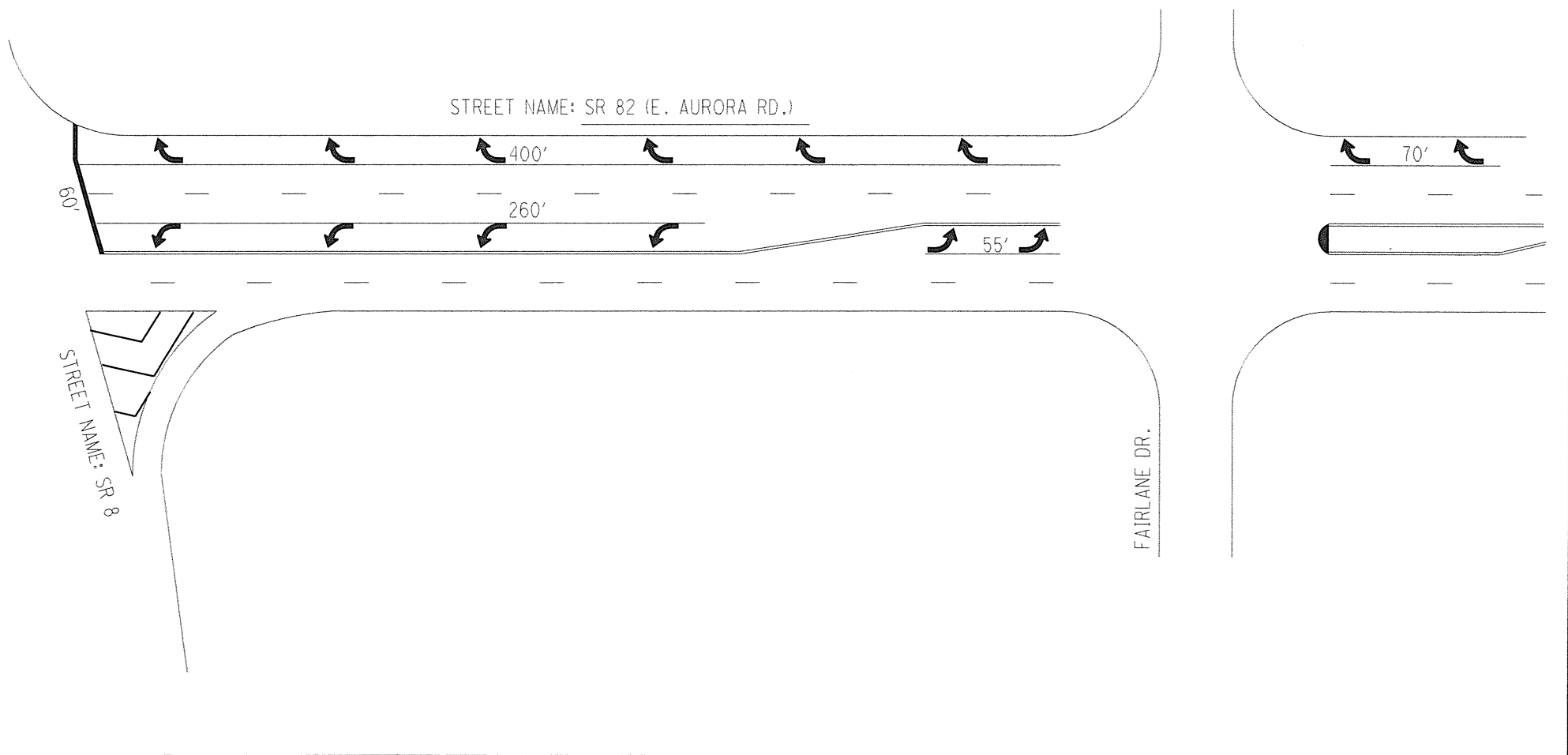
COUNTY:	SUMMIT	
LOCATION:	S.R. 82 AT BEECHWOOD BLVD.	
S.L.M.:	3.14	
24" STOP LINE:	50	L.F.
12" CROSSWALK LINE:	-	L.F.
DOTTED LINE:	-	L.F.
8" CHANNELIZING LINE:	750	L.F.
12" CHANNELIZING LINE:	-	L.F.
24" TRANSVERSE LINE (WT):	-	L.F.
24" TRANSVERSE LINE (YW):	-	L.F.
SYMBOL: 57 S.F. ISLAND MARKING, 2 - LEFT TURN ARROWS		
3 - RIGHT TURN ARROWS		



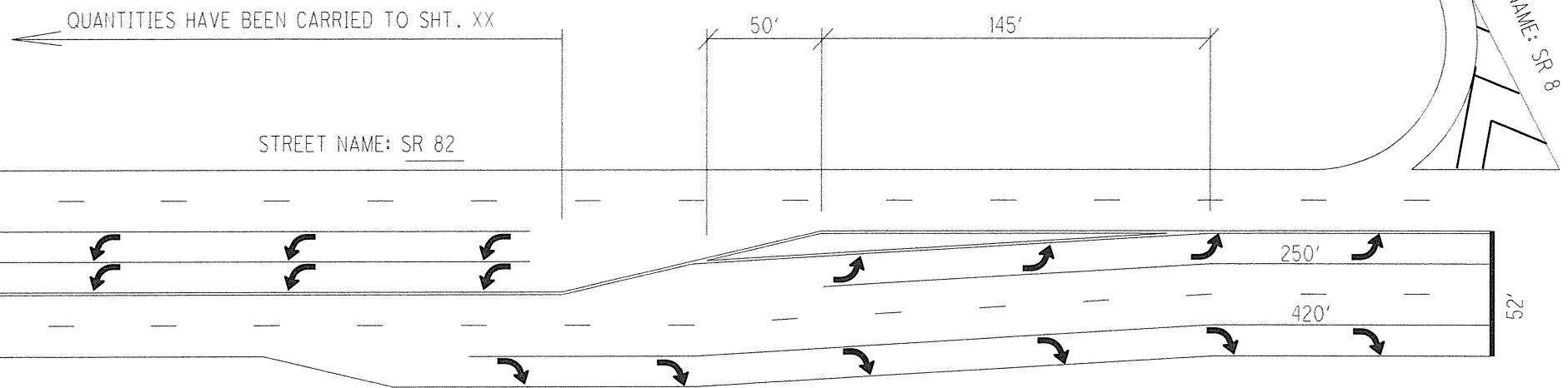
COUNTY:	SUMMIT	
LOCATION:	S.R. 82 AT GOLDEN LINK BLVD.	
S.L.M.:	3.34	
24" STOP LINE:	108	L.F.
12" CROSSWALK LINE:	-	L.F.
DOTTED LINE:	75	L.F.
8" CHANNELIZING LINE:	1130	L.F.
12" CHANNELIZING LINE:	-	L.F.
24" TRANSVERSE LINE (WT):	50	L.F.
24" TRANSVERSE LINE (YW):	-	L.F.
SYMBOL: 12 - LEFT TURN ARROWS, 2 - RIGHT TURN ARROWS		



COUNTY:	SUMMIT	
LOCATION:	S.R. 82 AT S.R. 8	
S.L.M.:	3.50	
24" STOP LINE:	60	L.F.
12" CROSSWALK LINE:	-	L.F.
DOTTED LINE:	-	L.F.
8" CHANNELIZING LINE:	730	L.F.
12" CHANNELIZING LINE:	-	L.F.
24" TRANSVERSE LINE (WT):	-	L.F.
24" TRANSVERSE LINE (YW):	-	L.F.
SYMBOL: 8 - RIGHT TURN ARROWS, 6 - LEFT TURN ARROWS		
57 S.F. - ISLAND MARKING		



COUNTY:	SUMMIT
LOCATION:	S.R. 82 AT S.R. 8
S.L.M.:	3.37
24" STOP LINE:	52 L.F.
12" CROSSWALK LINE:	- L.F.
DOTTED LINE:	- L.F.
8" CHANNELIZING LINE:	670 L.F.
12" CHANNELIZING LINE:	- L.F.
24" TRANSVERSE LINE (WT):	- L.F.
24" TRANSVERSE LINE (YW):	- L.F.
SYMBOL: 10 - LEFT TURN ARROWS, 6 - RIGHT TURN ARROWS	



COUNTY:	SUMMIT	
LOCATION:	S.R. 82 AT WATERS AVE.	
S.L.M.:	3.70	
24" STOP LINE:	75	L.F.
12" CROSSWALK LINE:	315	L.F.
DOTTED LINE:	-	L.F.
8" CHANNELIZING LINE:	300	L.F.
12" CHANNELIZING LINE:	-	L.F.
24" TRANSVERSE LINE (WT):	-	L.F.
24" TRANSVERSE LINE (YW):	-	L.F.
SYMBOL:	6 - LEFT TURN ARROWS	



STREET NAME: WATERS DR.

STREET NAME: SR 82 (E. AURORA RD.)

