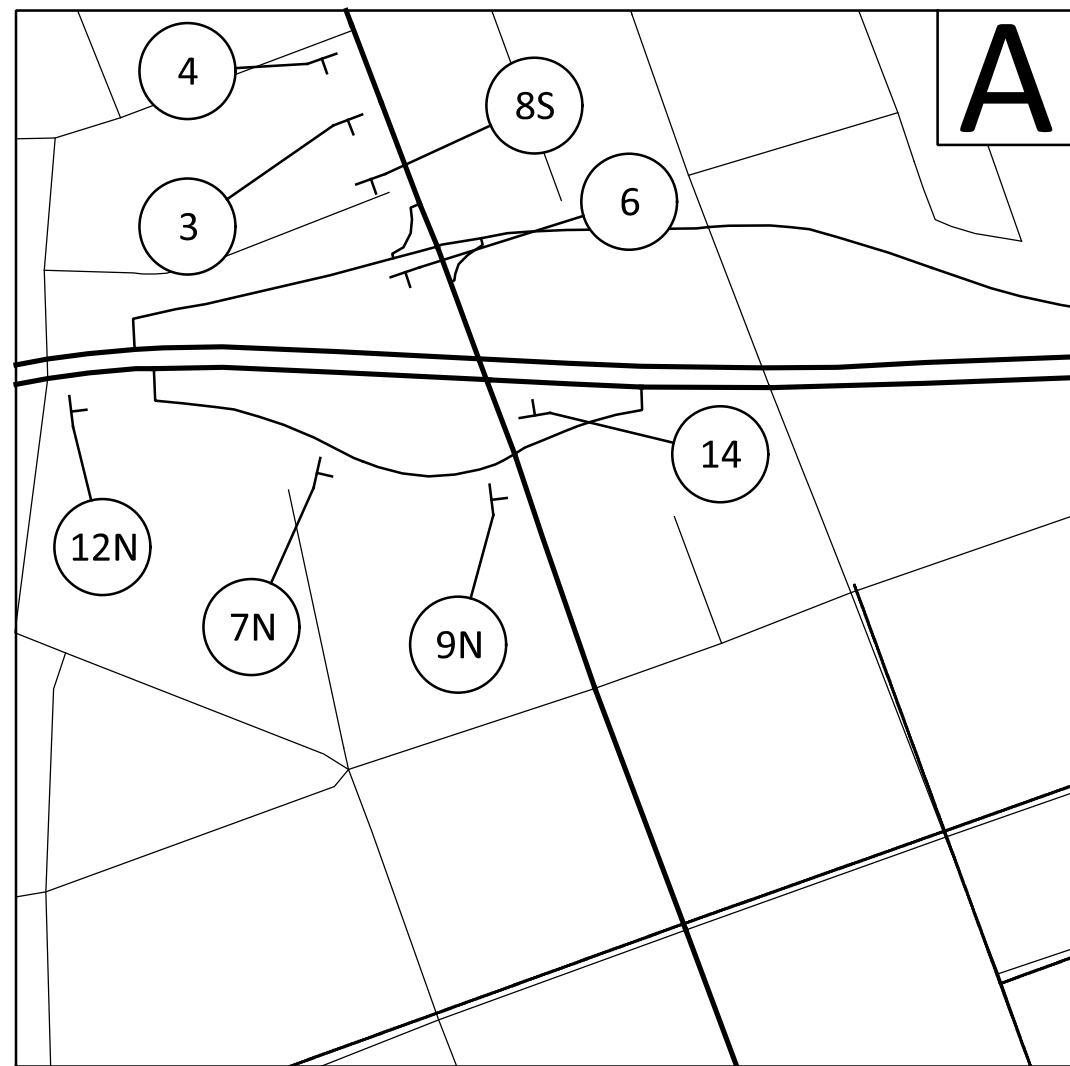


STATE DETOUR ROUTE:
NORTHBOUND: U.S. 40 TO S.R. 79 TO S.R. 16
SOUTHBOUND: S.R. 16 TO S.R. 79 TO U.S. 40

LOCAL DETOUR ROUTE:
NORTHBOUND: WHITE CHAPEL TO LICKING TRAILS TO IRVING WICK TO DORSEY MILL
SOUTHBOUND: DORSEY MILL TO IRVING WICK TO LICKING TRAILS TO WHITE CHAPEL

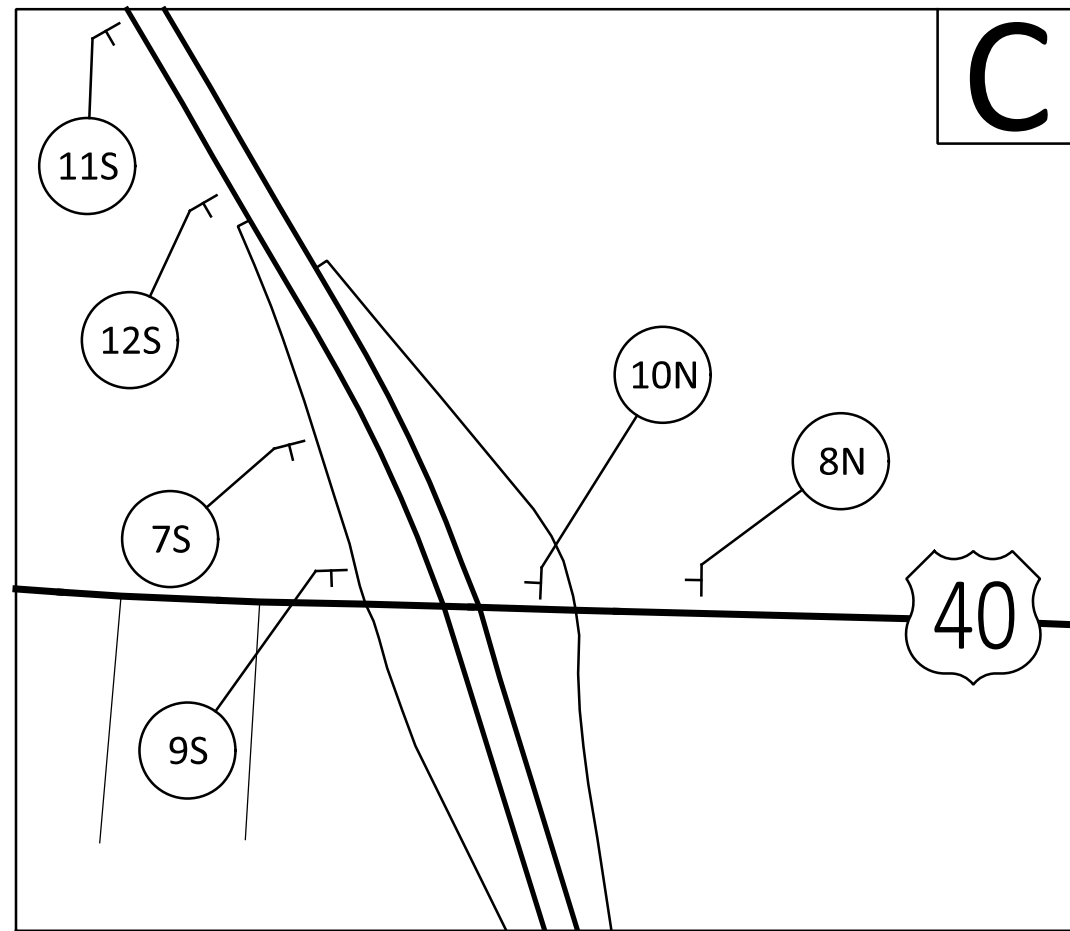
- LEGEND**
- CLOSURE LOCATION
 - LOCAL DETOUR ROUTE
 - ➔ STATE DETOUR ROUTE



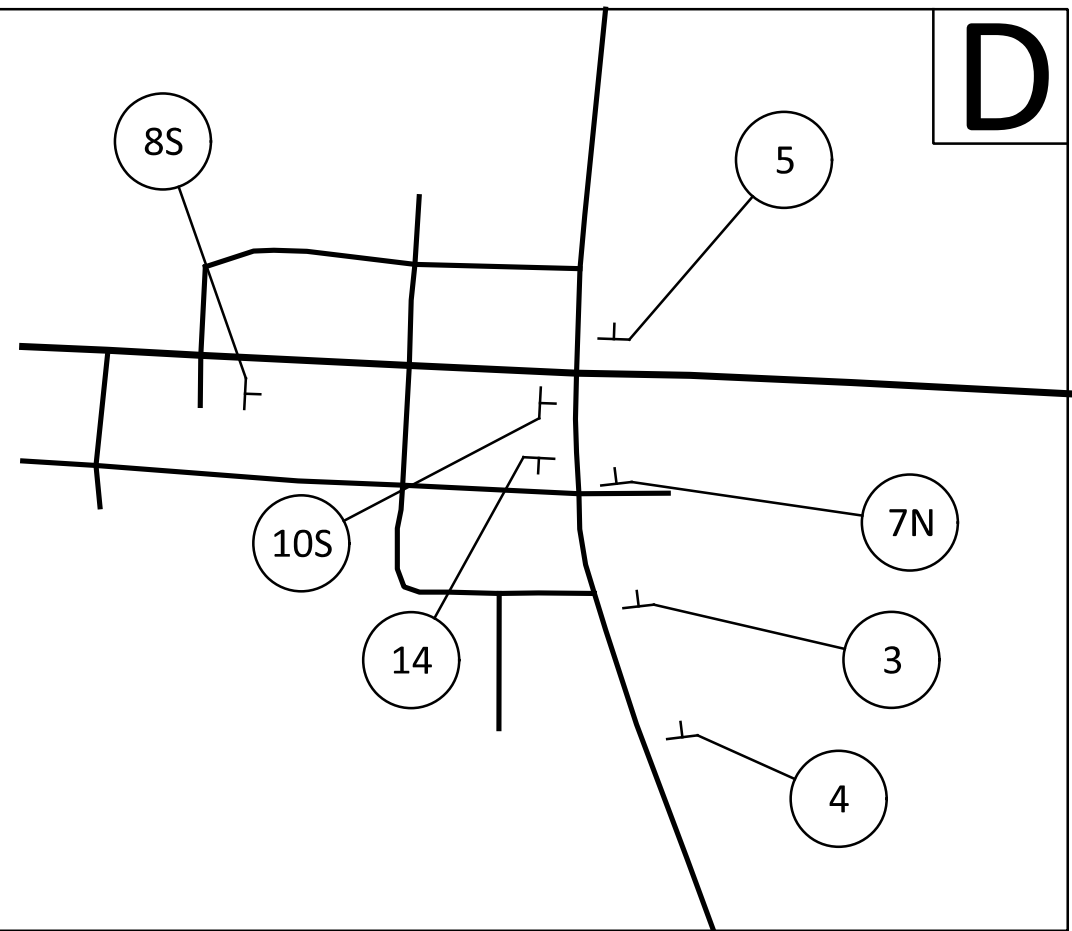
S.R. 16 / S.R. 13 INTERCHANGE DETAIL (NOT TO SCALE)



S.R. 79 / S.R. 16 INTERCHANGE DETAIL (NOT TO SCALE)



U.S. 40 / S.R. 79 INTERCHANGE DETAIL (NOT TO SCALE)



U.S. 40 / S.R. 13 INTERSECTION DETAIL (NOT TO SCALE)

1 S.R. 13 WILL BE CLOSED MMM/DD FOR XX DAYS INFO: XXX-XXX-XXXX W20-H13-60	2 ROAD CLOSED R11-2-48 (ON TYPE III BARRICADES) W20-2-36	3 DETOUR AHEAD W20-2-36	4 ROAD CLOSED AHEAD W20-3-36	5 DETOUR M4-10L-48	6 DETOUR M4-10R-48
7 DETOUR M4-8-24	8 DETOUR M4-8-24	9 DETOUR M4-8-24	10 DETOUR M4-8-24	11 DETOUR M4-8-24	12 DETOUR M4-8-24
13 M1-5-24-3	13 M1-5-24-3	13 M1-5-24-3	13 M1-5-24-3	13 M1-5-24-3	13 M1-5-24-3
5 M5-1-21	5 M5-1-21	6 M6-1-21	6 M6-1-21	5 M5-2-21	6 M6-2-21
TYPE III BARRICADE AS PER SCD MT-101.60					
BARRICADES SHALL BE PLACED JUST NORTH OF WHITE CHAPEL RD. AND SOUTH OF PROJECT AND JUST SOUTH OF DORSEY MILL RD. AND NORTH OF PROJECT.					
ADDITIONAL TYPE III BARRICADES MAY BE PLACED AT THE CLOSEST COUNTY OR TOWNSHIP ROAD NEAREST THE PROJECT AT THE DIRECTION OF THE PROJECT ENGINEER.					
SEE SCD MT-101.60 FOR ADDITIONAL DETAILS.					
** CONTRACTOR SHALL INSTALL ACCURATE MILEAGE NUMBERS ON SIGNS AT LOCATIONS WHERE MARKED ON THIS SHEET					