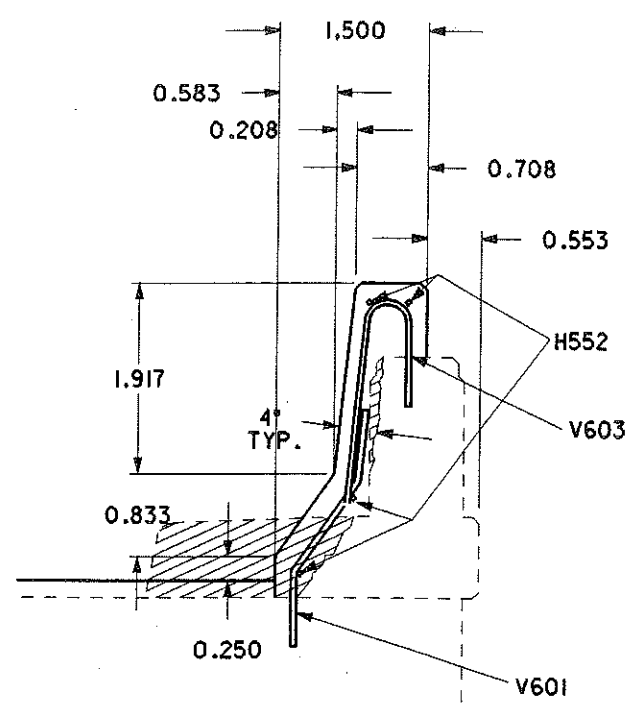
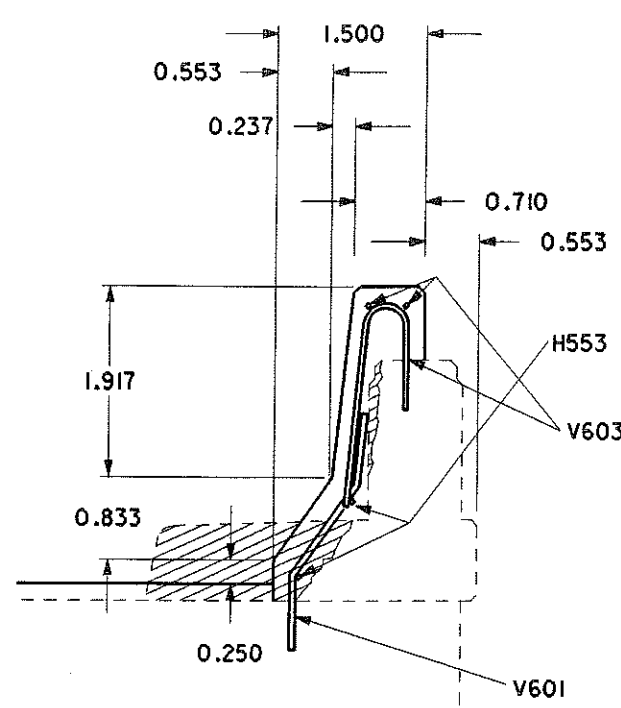


SECTION A-A
INTERNAL PANEL



SECTION B-B
FIRST INTERNAL PANEL



SECTION C-C
FIRST INTERNAL ABUTMENT PANEL

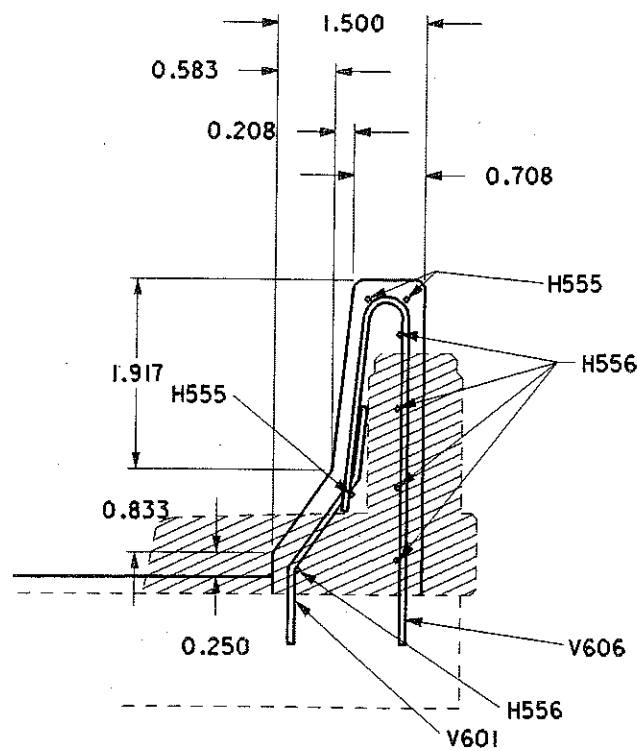
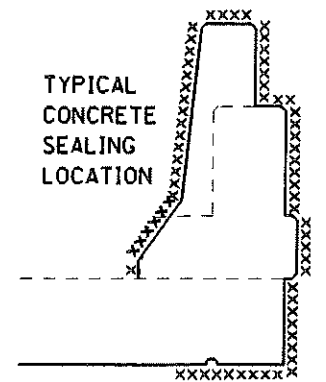
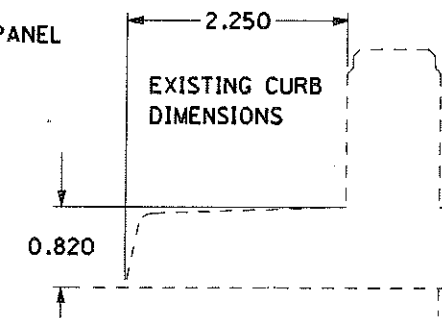
ALL #6 STEEL SHALL BE EMBEDDED A MINIMUM OF 6" IN EXISTING CONCRETE. ACTUAL LOCATIONS OF DOWEL HOLES MAY BE ADJUSTED TO AVOID CONFLICT WITH EXISTING REINFORCING STEEL,

ALL STEEL SHALL HAVE A MINIMUM 2" COVER.

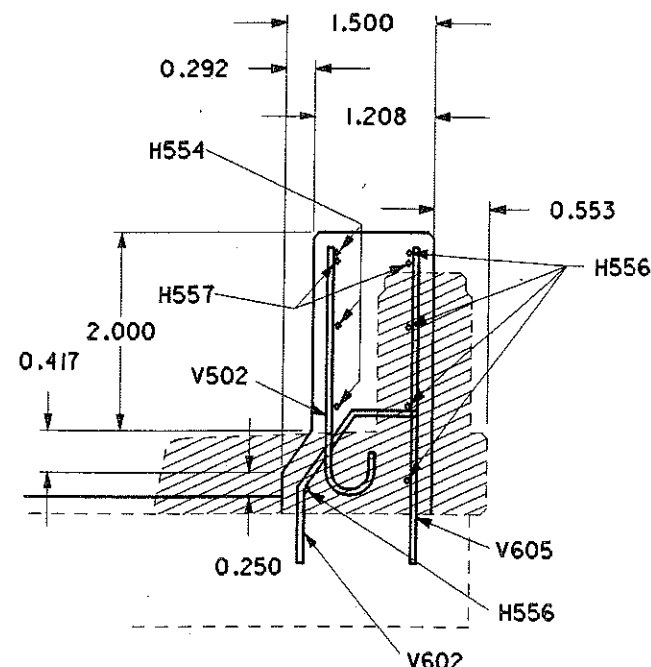
EXTEND THE EXISTING DEFLECTION JOINTS COMPLETELY THROUGH THE PROPOSED PARAPET FACING. SEAL THE JOINTS AS PER BRIDGE NOTES,

PORTIONS OF EXISTING SAFETY CURBS AND PARAPETS TO BE REMOVED.

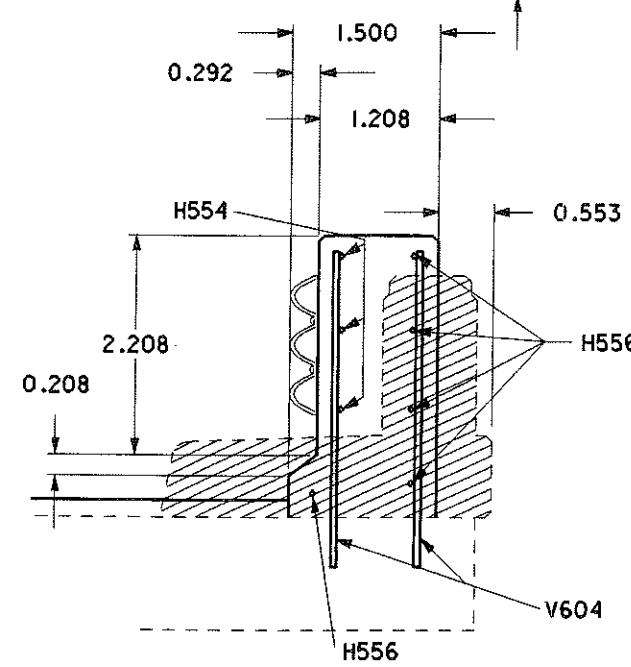
XXXXXX CONCRETE SURFACES TO BE SEALED UNDER ITEM SPECIAL - SEALING OF CONCRETE SURFACES, EPOXY.



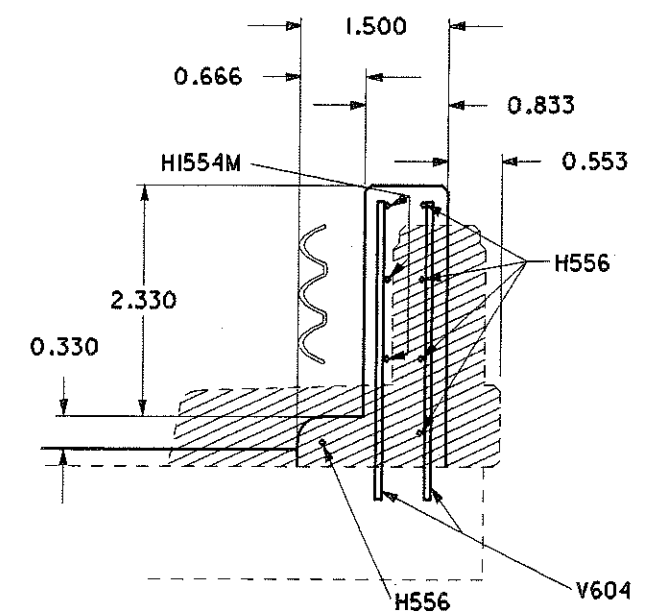
SECTION D-D
TRANSITION PANEL



SECTION E-E
TRANSITION PANEL



SECTION F-F
TRANSITION PANEL



SECTION G-G
TRANSITION PANEL



DESIGNED	REVISIONS
LEE 4-24-00	
CHECKED	