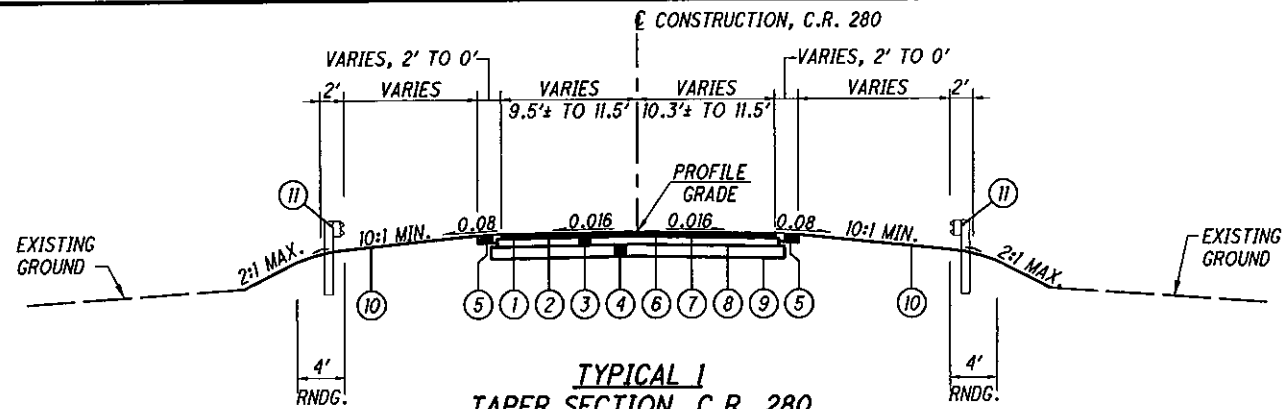
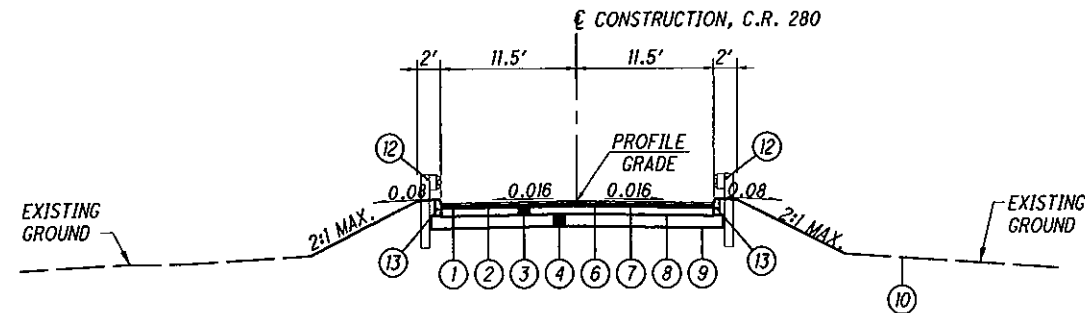


GREEN TOWNSHIP
ROSS COUNTY

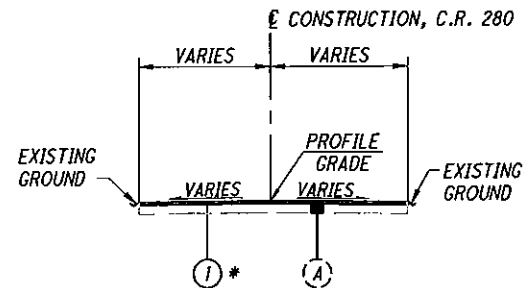




(L.T.) STA. 18+00.00 TO STA. 18+78.30 = 78.30'
(R.T.) STA. 18+00.00 TO STA. 18+80.43 = 80.43'

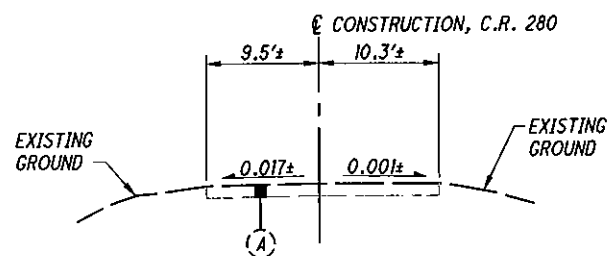


(L.T.) STA. 18+78.30 TO STA. 18+94.95 = 16.65'
(L.T.) STA. 19+42.34 TO STA. 19+66.00 = 23.66'
(R.T.) STA. 18+80.43 TO STA. 18+97.08 = 16.65'
(R.T.) STA. 19+44.47 TO STA. 19+68.00 = 23.53'

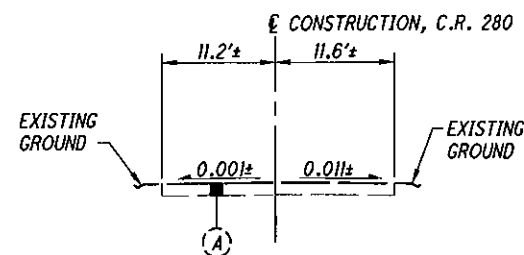


STA. 19+70.00 TO STA. 21+10.00 = 40.00'

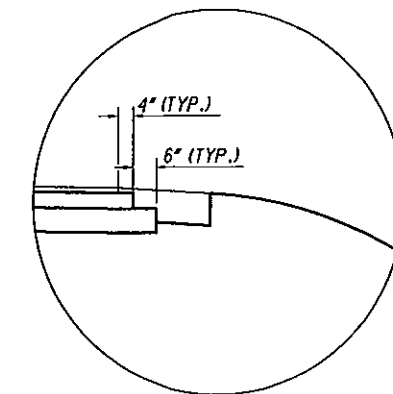
* PLANE 1 1/2" OF EXISTING ASPHALT PAVEMENT PER STATION RANGE NOTED. FEATHER 4 1/2" OF PROPOSED ASPHALT PAVEMENT BEGINNING AT STA. 19+70 BACK TO 0" AT TIE-IN STA. 20+10.



STA. 18+00



STA. 20+10



BASE AND SUBBASE STEP DETAIL

LEGEND

- ITEM 448 1 1/4" ASPHALT CONCRETE SURFACE COURSE, TYPE 1, PG64-22
- ITEM 448 1 3/4" ASPHALT CONCRETE INTERMEDIATE COURSE, TYPE 2, PG64-22
- ITEM 301 4" ASPHALT CONCRETE BASE, PG64-22
- ITEM 304 6" AGGREGATE BASE
- ITEM 304 8" AGGREGATE BASE
- ITEM 407 TACK COAT FOR INTERMEDIATE COURSE (APPLIED @ RATE 0.04 GAL./SQ. YD.)
- ITEM 407 TACK COAT (APPLIED @ RATE 0.075 GAL./SQ. YD.)
- ITEM 408 PRIME COAT (APPLIED @ RATE 0.40 GAL./SQ. YD.)
- ITEM 204 SUBGRADE COMPACTION
- ITEM 659 SEEDING AND MULCHING
- ITEM 606 GUARDRAIL TYPE 5
- ITEM 606 BRIDGE TERMINAL ASSEMBLY, TYPE 1
- ITEM 609 CURB, TYPE 4-C
- EXISTING ASPHALT, UNKNOWN BUILD-UP

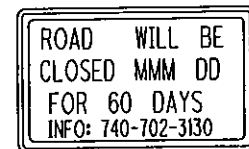
ITEM 614. MAINTAINING TRAFFIC

C.R. 280 SHALL BE CLOSED TO THROUGH TRAFFIC WITHIN THE PROJECT LIMITS STATED FOR A PERIOD NOT TO EXCEED 60 CONSECUTIVE CALENDAR DAYS BEGINNING NO EARLIER THAN JUNE X, 20XX. THROUGH TRAFFIC WILL BE DETOURED AS SHOWN ON THIS SHEET. DISINCENTIVES SHALL BE ASSESSED IN THE AMOUNT OF \$1000 PER DAY FOR EACH CALENDAR DAY THAT THE ROADWAY REMAINS CLOSED TO TRAFFIC BEYOND THE PROPOSAL COMPLETION DATE.

BEFORE THE WORK BEGINS, THE CONTRACTOR SHALL SUBMIT TO THE ENGINEER THE NAMES AND TELEPHONE NUMBERS OF THE PERSON OR PERSONS WHO CAN BE CONTACTED (24) HOURS PER DAY BY THE ROSS COUNTY ENGINEER, AND ALL INTERESTED LAW ENFORCEMENT AGENCIES. THIS PERSON OR PERSONS SHALL BE RESPONSIBLE FOR PLACING OR REPLACING NECESSARY TRAFFIC CONTROL DEVICES IN ACCORDANCE WITH THE OHIO MANUAL OF UNIFORM TRAFFIC CONTROL DEVICES.

THE CONTRACTOR WILL ADVISE THE ROSS COUNTY ENGINEER SEVEN (7) DAYS PRIOR TO THE START OF CONSTRUCTION ACTIVITIES. THE PROJECT ENGINEER WILL PROVIDE ASSISTANCE/CLARIFICATION FOR ANY QUESTIONS.

NOTICE OF CLOSURE SIGNS, AS DETAILED IN THESE PLANS, SHALL BE ERECTED BY THE CONTRACTOR AT LEAST ONE WEEK IN ADVANCE OF THE SCHEDULED ROAD CLOSURE. THE SIGNS SHALL BE ERECTED ON THE RIGHT HAND SIDE OF THE ROAD FACING TRAFFIC. THEY SHALL BE PLACED SO AS NOT TO INTERFERE WITH THE VISIBILITY OF ANY TRAFFIC CONTROL SIGNS. ON ROADWAYS, THEY SHOULD BE ERECTED AT THE POINT OF CLOSURE.



W20-H14-60
MMM= MONTH (3 LTR)
DD = DATE (1 OR 2 DIGIT)

THE CONTRACTOR SHALL PROVIDE, ERECT AND MAINTAIN STANDARD 48" X 30" "ROAD CLOSED" SIGNS, SIGN SUPPORTS, BARRICADES, GATES, AND LIGHTS, AS DETAILED IN SCD MT-101.60 AT THE FOLLOWING LOCATIONS DURING PERIODS IN WHICH THE AFFECTED ROADS ARE CLOSED TO TRAFFIC:

ON COUNTY ROAD 280 AT STA. 17+00
ON COUNTY ROAD 280 AT STA. 22+50

THE CONTRACTOR SHALL PROVIDE, ERECT AND MAINTAIN SIGNS AND SIGN SUPPORTS, AS DETAILED IN THE OHIO MANUAL OF UNIFORM TRAFFIC CONTROL DEVICES, AND TYPE III BARRICADES OF THE TYPE AND LOCATIONS AS FOLLOWS:

R11-3A-60 **ROAD CLOSED 0.1 MILES AHEAD LOCAL TRAFFIC ONLY** SIGN AND M4-10R-48 **DETOUR ARROW** RIGHT SIGN ON TYPE III BARRICADE ON BOTH SHOULDERS OF COUNTY ROAD 280, EAST OF THE INTERSECTION OF S.R. 159 AND COUNTY ROAD 280.

R11-3A-60 **ROAD CLOSED 1 MILES AHEAD LOCAL TRAFFIC ONLY** SIGN AND M4-10L-48 **DETOUR ARROW** LEFT SIGN ON TYPE III BARRICADE ON BOTH SHOULDERS OF COUNTY ROAD 280, EAST OF THE INTERSECTION OF COUNTY ROAD 280 AND ORR RD.

THE CONTRACTOR SHALL PROVIDE, ERECT AND MAINTAIN C.R. 280 DETOUR SIGNS AND SIGN SUPPORTS AS DETAILED ON THIS SHEET.

THE FOLLOWING ESTIMATED QUANTITIES HAVE BEEN INCLUDED IN THE GENERAL SUMMARY FOR USE AS DETERMINED BY THE ENGINEER FOR THE MAINTENANCE OF TRAFFIC.

ITEM 614 DETOUR SIGNING

LUMP

ALL WORK AND TRAFFIC CONTROL DEVICES SHALL BE IN ACCORDANCE WITH CMS 614 AND OTHER APPLICABLE PORTIONS OF THE SPECIFICATIONS, AS WELL AS THE OHIO MANUAL OF UNIFORM TRAFFIC CONTROL DEVICES. PAYMENT FOR ALL LABOR, EQUIPMENT AND MATERIALS SHALL BE INCLUDED IN THE LUMP SUM CONTRACT PRICE FOR ITEM 614, MAINTAINING TRAFFIC, UNLESS SEPARATELY ITEMIZED IN THE PLAN.

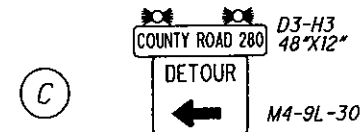
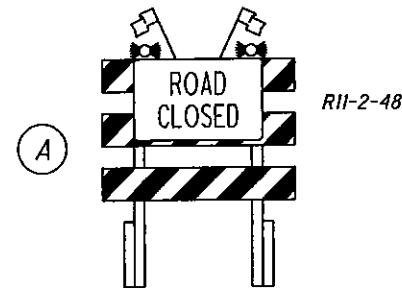
DUST CONTROL

THE CONTRACTOR SHALL FURNISH AND APPLY WATER FOR DUST CONTROL AS DIRECTED BY THE ENGINEER. THE FOLLOWING ESTIMATED QUANTITIES HAVE BEEN INCLUDED FOR DUST CONTROL PURPOSES:

ITEM 616, WATER

- M. GAL.

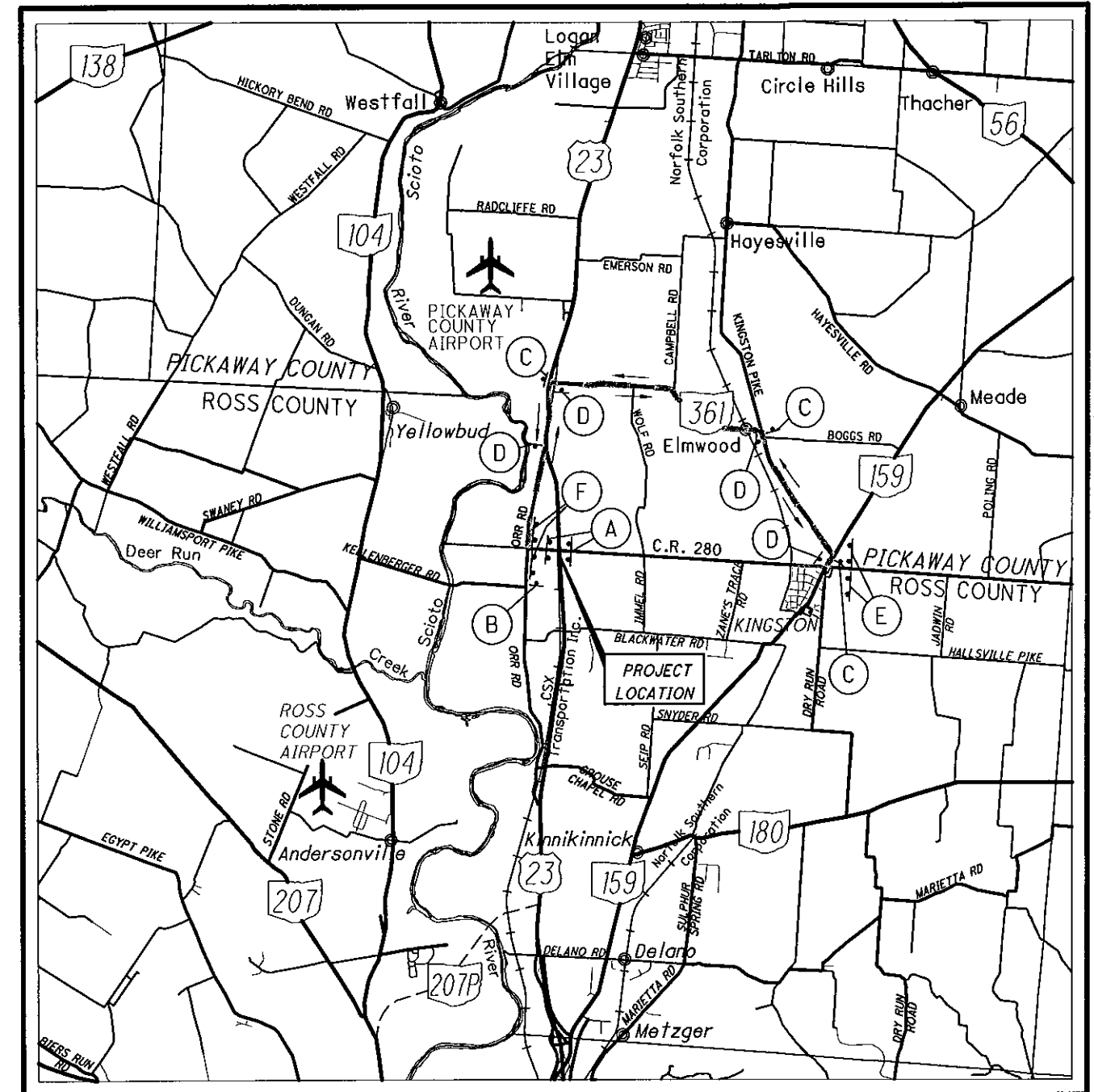
SIGN INDEX



TYPE III BARRICADES



TYPE III BARRICADES



COUNTY ROAD 280 DETOUR MAP

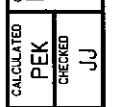
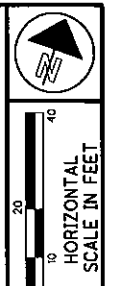
NOT TO SCALE



MAINTENANCE OF TRAFFIC - C.R. 280

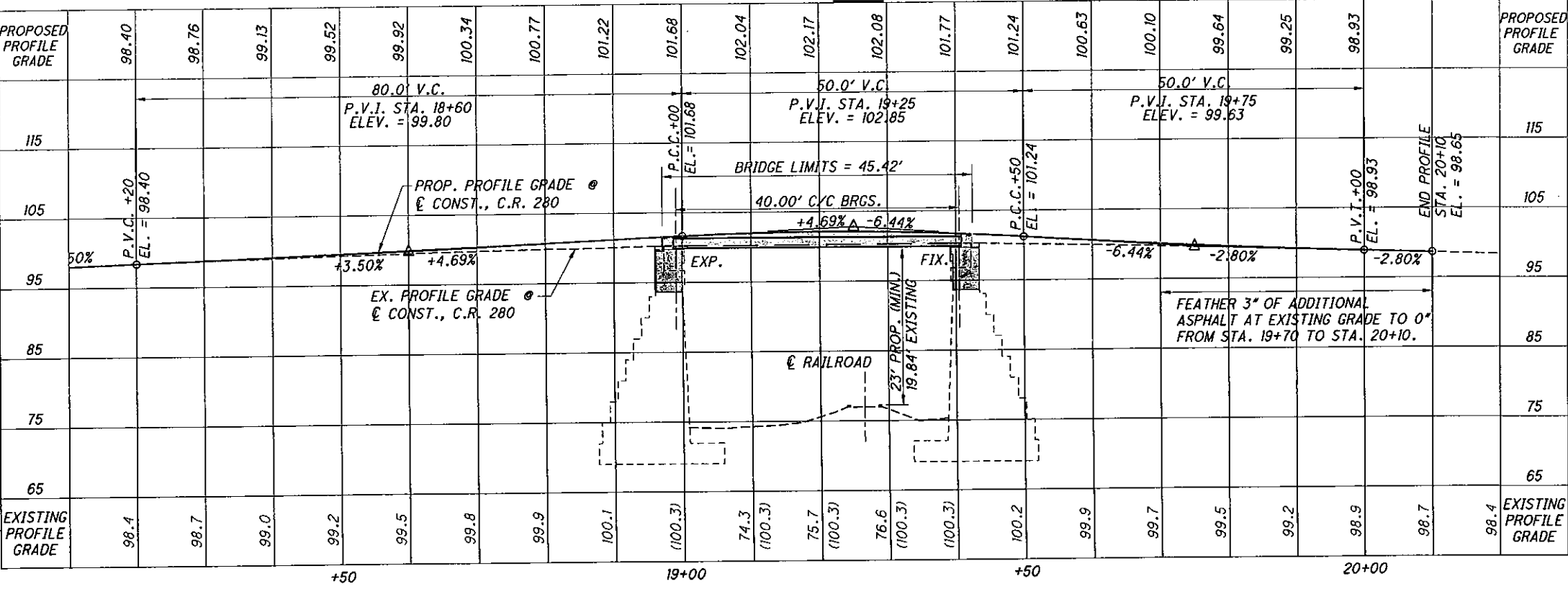
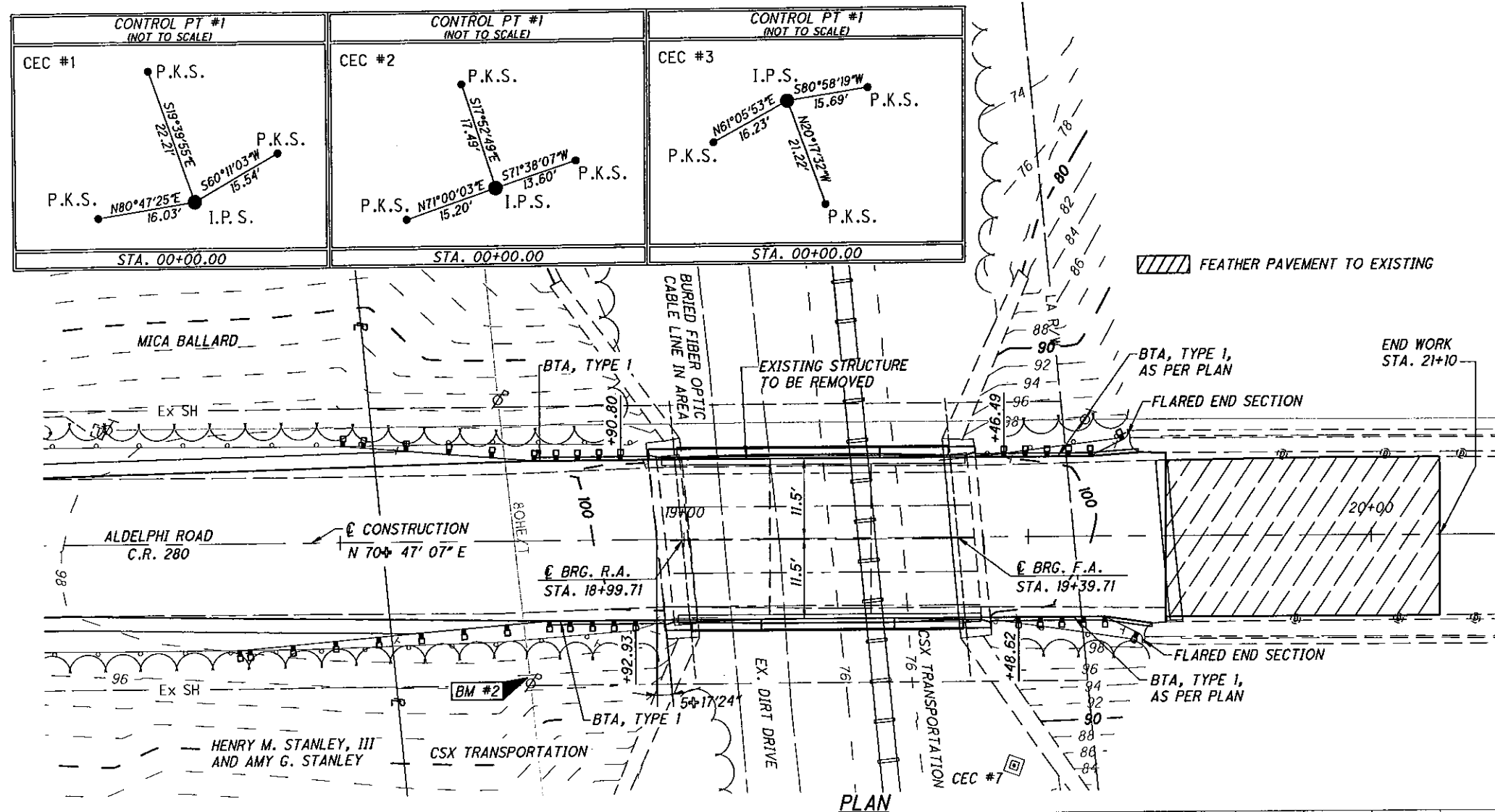
ROS-CR 280-00.36

3
11



PLAN AND PROFILE
STA. 17+00.00 TO STA. 21+00.00

ROS-CR 280-00.36



PROFILE ALONG C CONSTRUCTION, C.R. 280

LEGEND:

- EXCAVATION
- GRAVEL DRIVE
- TO BE REMOVED
- ORIGINAL SOIL BORING LOCATION

NOTES:

- EARTHWORK LIMITS SHOWN ARE APPROXIMATE. ACTUAL SLOPES SHALL CONFORM TO PLAN CROSS-SECTIONS.
- FOR ROADWAY GRADING, REFER TO ROADWAY PLANS.

SURVEY CONTROL POINTS

POINT	NORTHING	EASTING	ELEV.
CONTROL PT #1 (I.P.S.)	4898.31	4720.60	90.20
CONTROL PT #2 (I.P.S.)	5000.00	5000.00	100.00
CONTROL PT #3 (I.P.S.)	5116.54	5271.40	91.91

TRAFFIC DATA

CURRENT A.D.T. (2010) = XXX
 DESIGN YEAR A.D.T. (2033) = XXX
 CURRENT AVERAGE DAILY TRUCK TRAFFIC = 3%

EXISTING STRUCTURE

TYPE: STEEL GIRDER DECK
 ROADWAY: 21'-6" F/F RAILING
 BRIDGE LENGTH: 41'-0"
 ALIGNMENT: TANGENT
 SKEW: 5°17'24" R.F.
 LOADING: UNKNOWN
 APPROACH SLABS: NONE
 WEARING SURFACE: 3" ASPHALT CONCRETE
 STRUCTURE FILE NUMBER: 7150768
 DATE BUILT: 1927

PROPOSED STRUCTURE

TYPE: SINGLE-SPAN COMPOSITE PRESTRESSED CONCRETE BOX BEAM BRIDGE AND CONCRETE ABUTMENTS.
 ROADWAY: 23'-0" F/F GUARDRAILS
 SPAN: 40'-0" C/C BEARINGS
 ALIGNMENT: TANGENT
 SKEW: 5°17'24" R.F.
 LOADING: HL-93 WITH 60 PSF FUTURE WEARING SURFACE
 CROWN: 0.016
 APPROACH SLABS: NONE
 WEARING SURFACE: 3" ASPHALT CONCRETE
 LATITUDE: N 39° 28' 45" LONGITUDE: W 82° 58' 18"

DESIGN AGENCY
COLUMBUS ENGINEERING
CONSULTANTS, INC.
640 MICHIGAN AVENUE, COLUMBUS, OH 43260
TEL: 614-429-9500

DATE
7/12

REVIEWED
JJ

DESIGNED
JJ/AA

CHECKED
YSJ

ROSS COUNTY
STA. 18+96.01 TO
STA. 19+43.41

SITE PLAN
BRIDGE NO. ROS-CR 280-0036
OVER CSX RAILROAD




ROS-CR 280-00.36

1 / 7

5
11

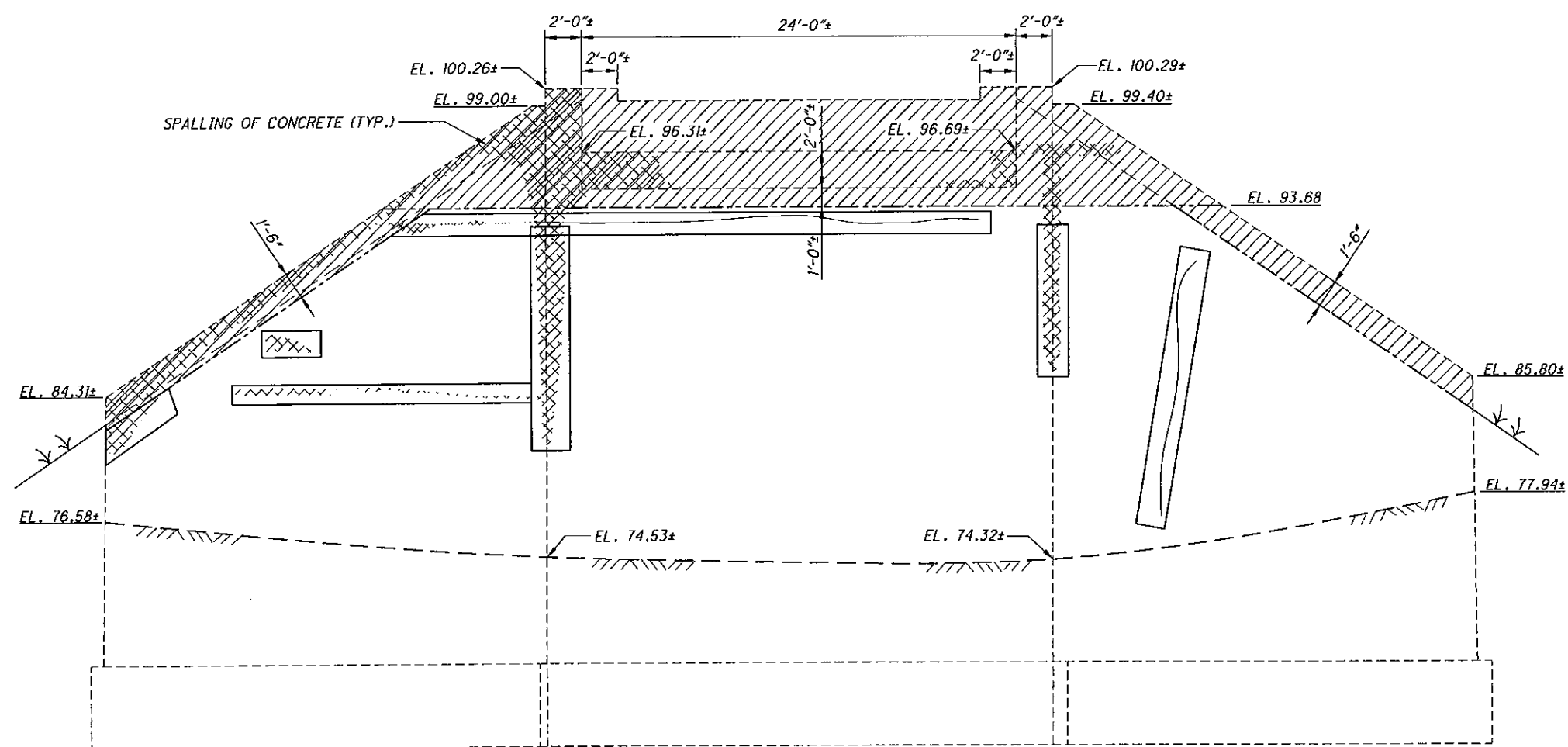


LEGEND

-  - AREA TO BE REMOVED
-  - AREA TO BE PATCHED OR SEALED BY EPOXY INJECTION
-  - SPALLING OF CONCRETE

NOTES:




1. ALL ELEVATIONS SHOWN ARE FROM FIELD SURVEY
2. THE REMOVAL SHALL BE BY SAW-CUT. THE EXISTING RE-STEEL SHALL BE REMOVED WITH THE EXISTING CONCRETE.



REAR ABUTMENT REMOVAL & PATCHING DETAILS
(ELEVATION)

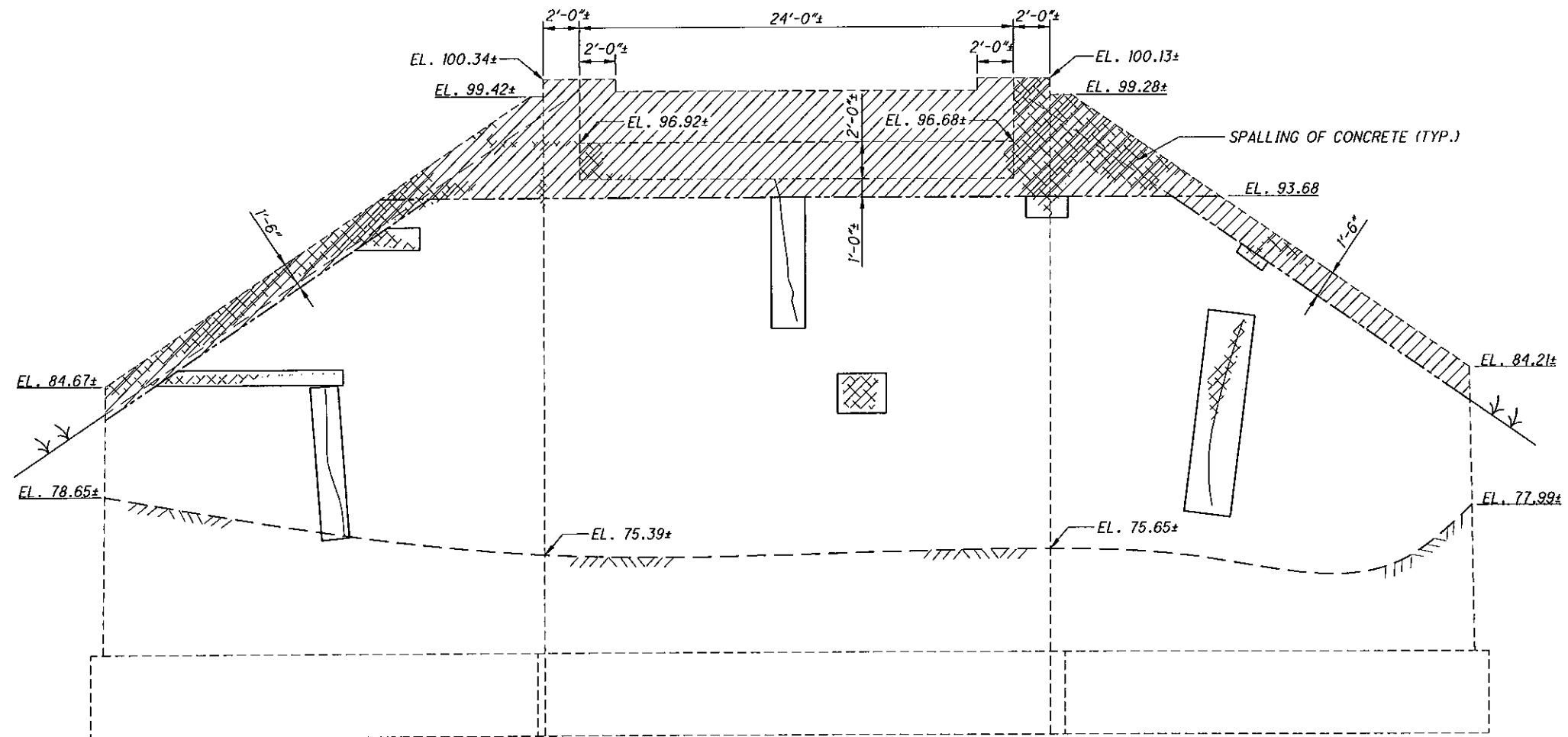


LEGEND

-  - AREA TO BE REMOVED
-  - AREA TO BE PATCHED OR SEALED BY EPOXY INJECTION
-  - SPALLING OF CONCRETE

NOTES:

1. ALL ELEVATIONS SHOWN ARE FROM FIELD SURVEY
2. THE REMOVAL SHALL BE BY SAW-CUT. THE EXISTING RE-STEEL SHALL BE REMOVED WITH THE EXISTING CONCRETE.



FORWARD ABUTMENT REMOVAL & PATCHING DETAILS
(ELEVATION)

FORWARD ABUTMENT REMOVAL & PATCHING DETAILS
BRIDGE NO. ROS-CR 280-0036
OVER CSX RAILROAD

ROS-CR 280-00.36

3 / 7

7
11

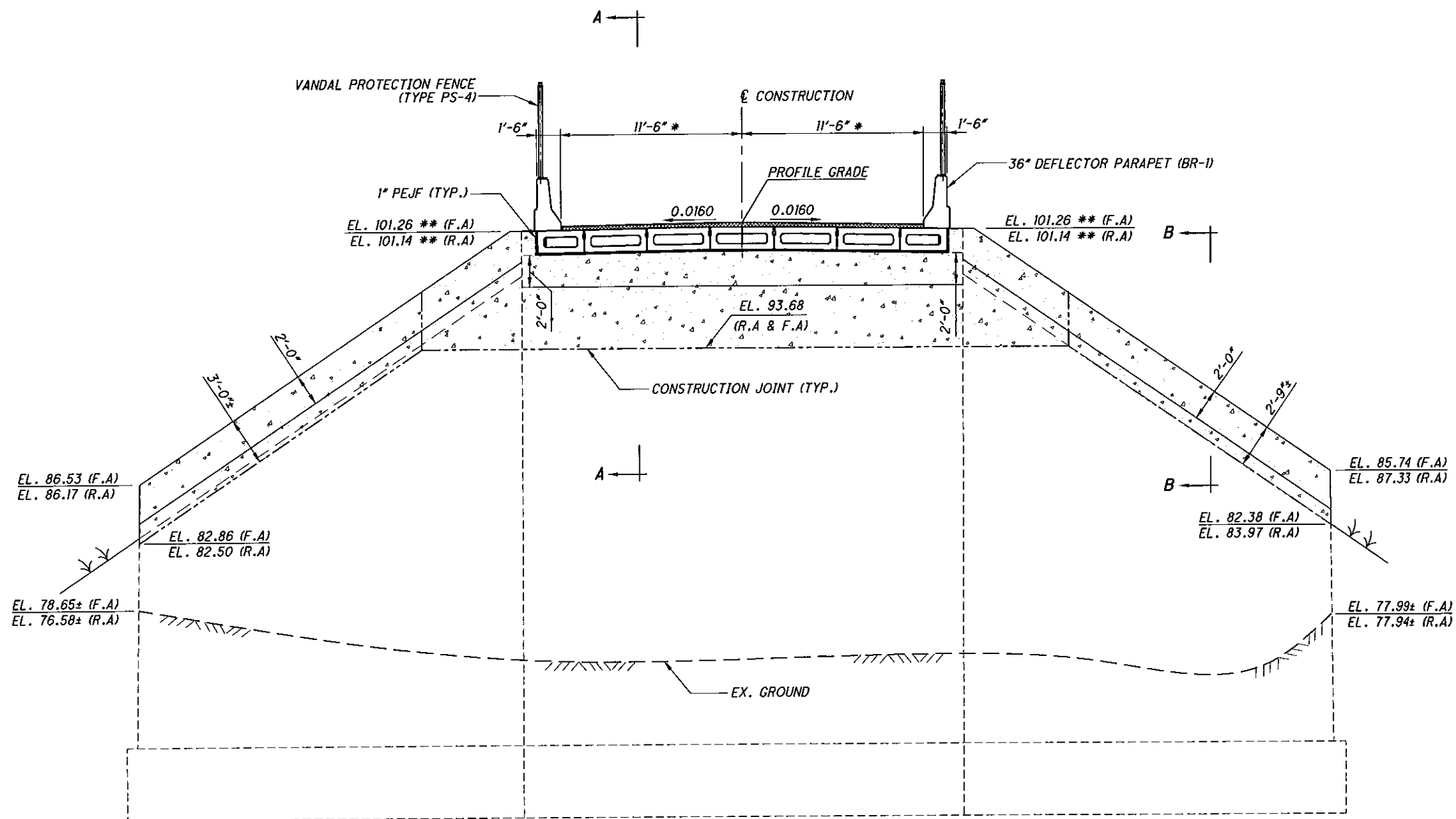
DESIGNED JJ/AA	DRAWN CEC	REVIEWED JJ	DATE 07/12
CHECKED YSJ	REVISD XXX	STRUCTURE FILE NUMBER 7150768	DESIGN AGENCY COLUMBUS ENGINEERING CONSULTANTS, INC. 840 MIDGAM AVENUE, COLUMBUS, OH 43215 TEL: 614-228-3500



FORWARD ABUTMENT



REAR ABUTMENT



ABUTMENT CONSTRUCTION DETAILS

(NOTE: REINFORCING DETAILS WILL BE SHOWN ON THE FINAL PLANS.
 * PLUS FIT-UP
 ** ELEVATION SHOWN AT CENTER LINE OF ABUTMENT BEARINGS.)

DESIGN ASSOCIATE
 COLUMBUS ENGINEERING
 CONSULTANTS, INC.
 640 MICHIGAN AVENUE, COLUMBUS, OH 43215
 TEL: 614/224-3600

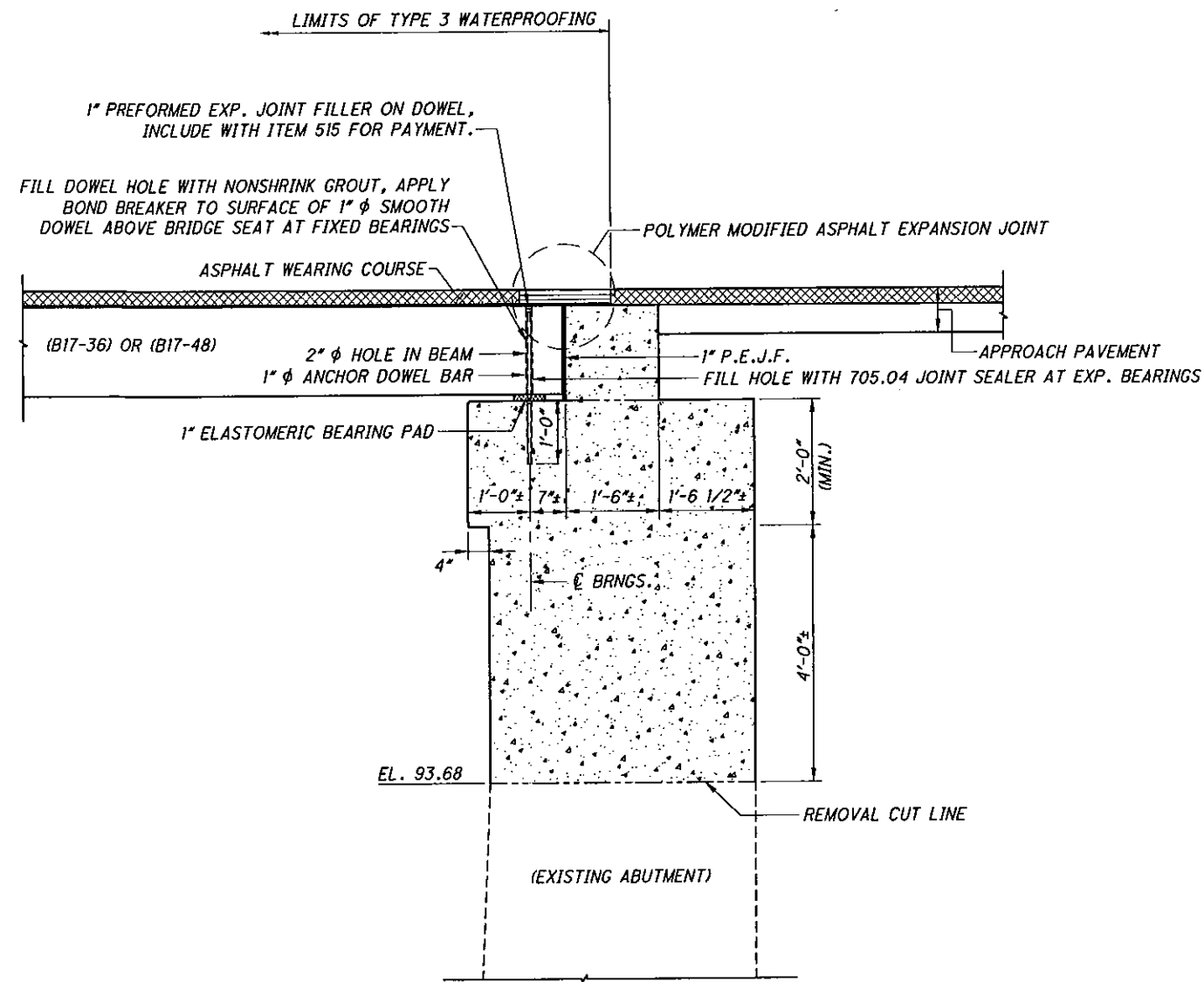
DATE	07/12
REVIEWED	JJ
STRUCTURE FILE NUMBER	7150768
DRAWN	CEC
REVISOR	XXX
CHECKED	YSJ

ABUTMENT CONSTRUCTION DETAILS - I
 BRIDGE NO. ROS-CR 280-0036
 OVER CSX RAILROAD

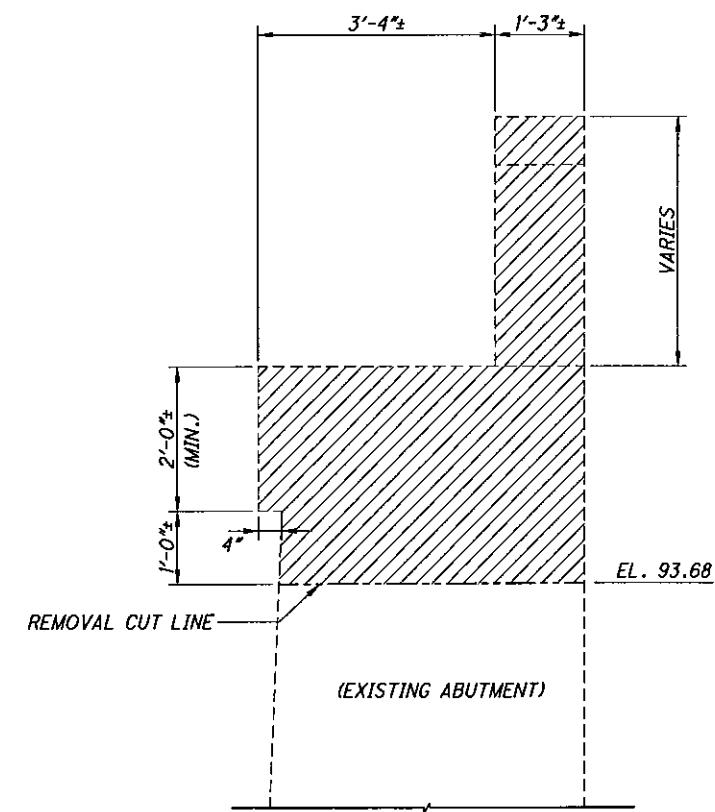
ROS-CR 280-00.36

4 / 7

8
11



SECTION A-A
FOR LOCATION OF SECTION A-A, SEE SHEET [477]



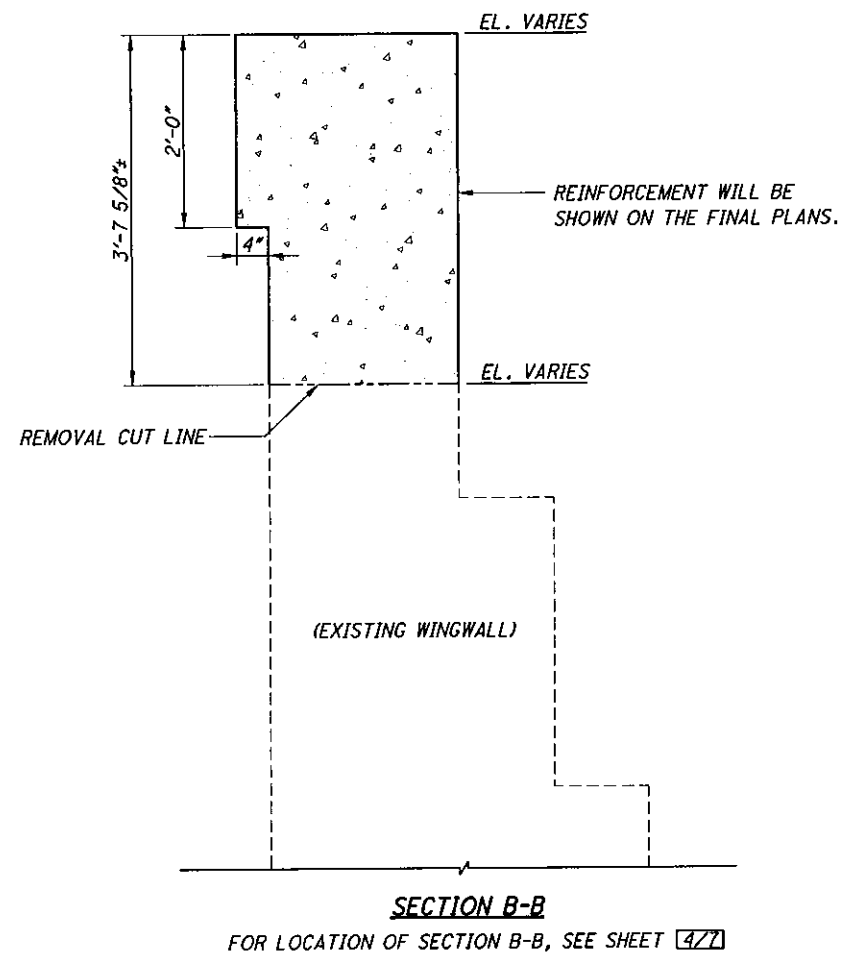
EXISTING ABUTMENT SECTION

LEGEND

▨ - AREA TO BE REMOVED

NOTES:

1. THE REMOVAL SHALL BE BY SAW-CUT. THE EXISTING RE-STEEL SHALL BE REMOVED WITH THE EXISTING CONCRETE.

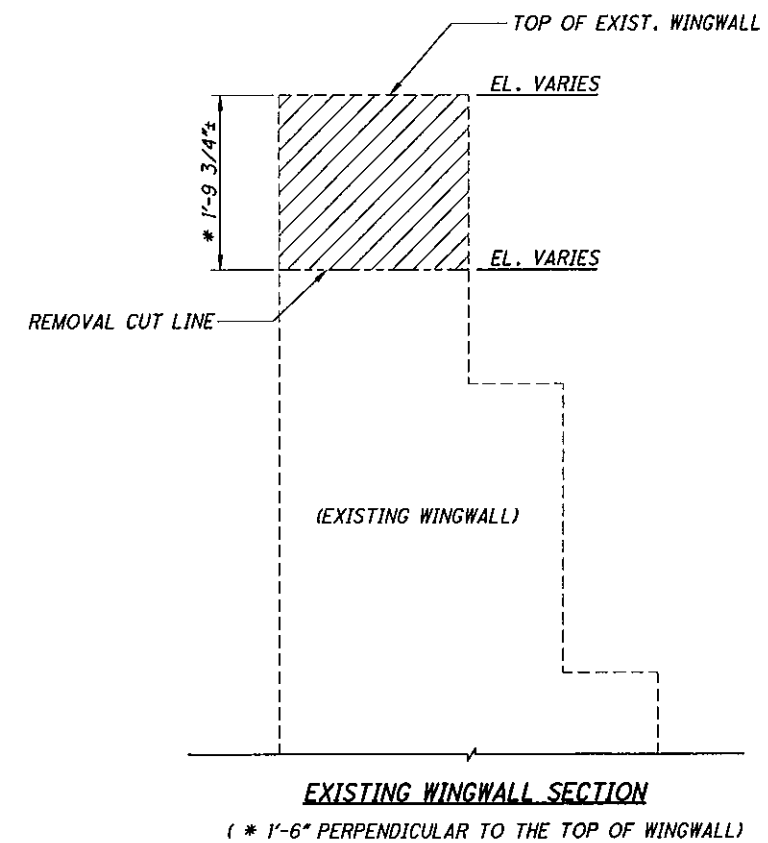


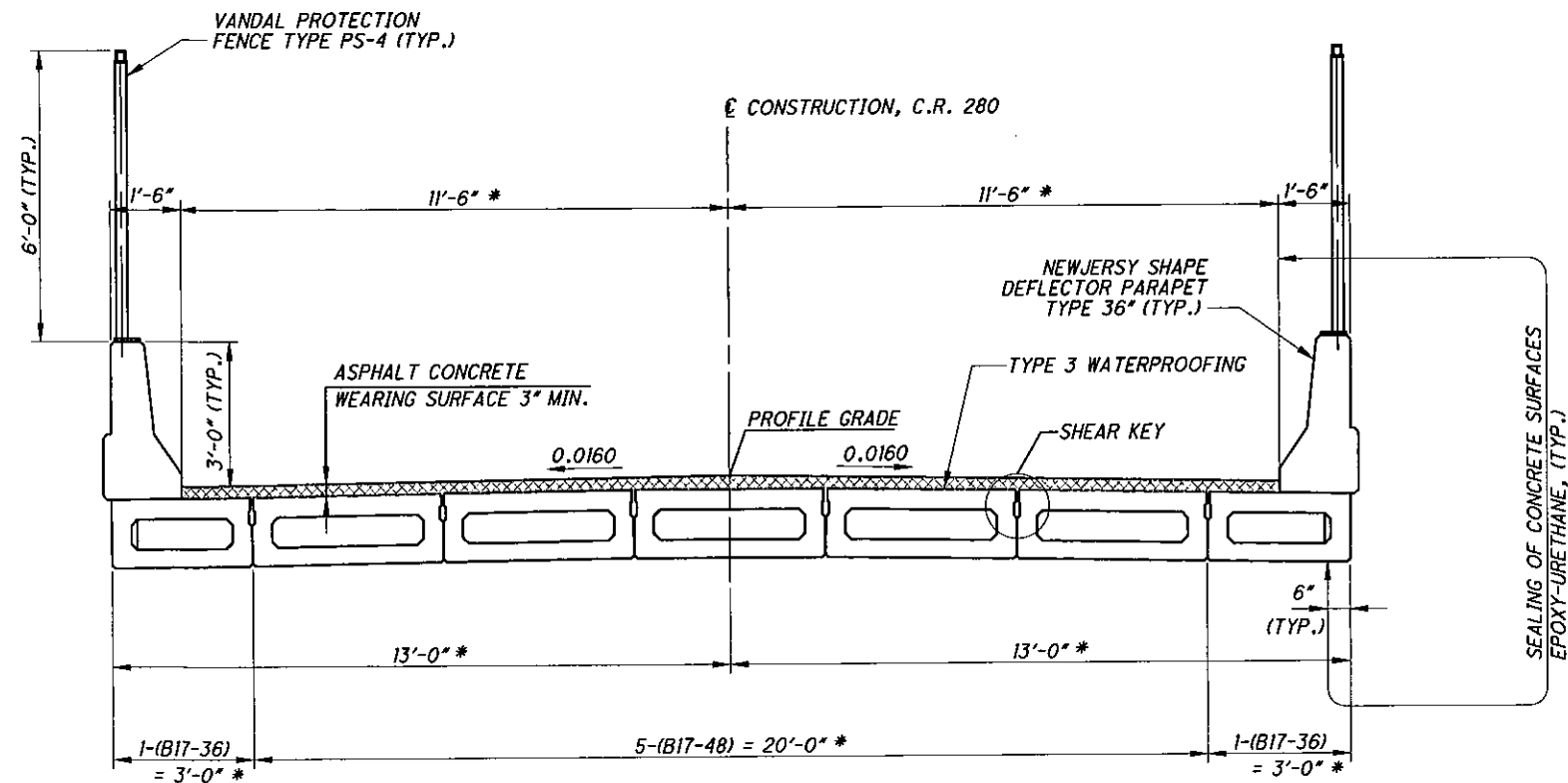
LEGEND

 - AREA TO BE REMOVED

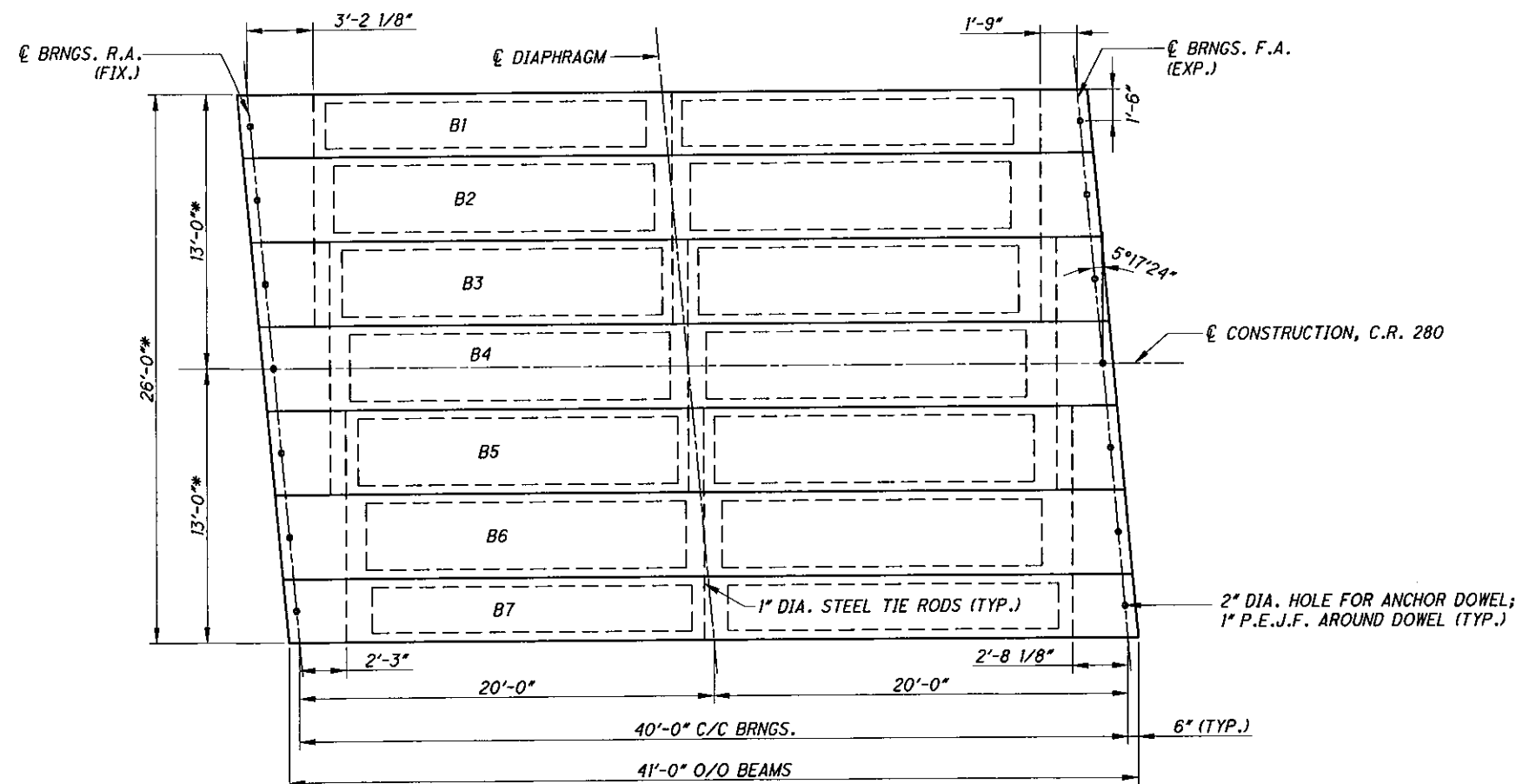
NOTES:

1. THE REMOVAL SHALL BE BY SAW-CUT. THE EXISTING RE-STEEL SHALL BE REMOVED WITH THE EXISTING CONCRETE.
2. SEE SHEET 2/7 AND 3/7 FOR WINGWALL REMOVAL LIMITS.

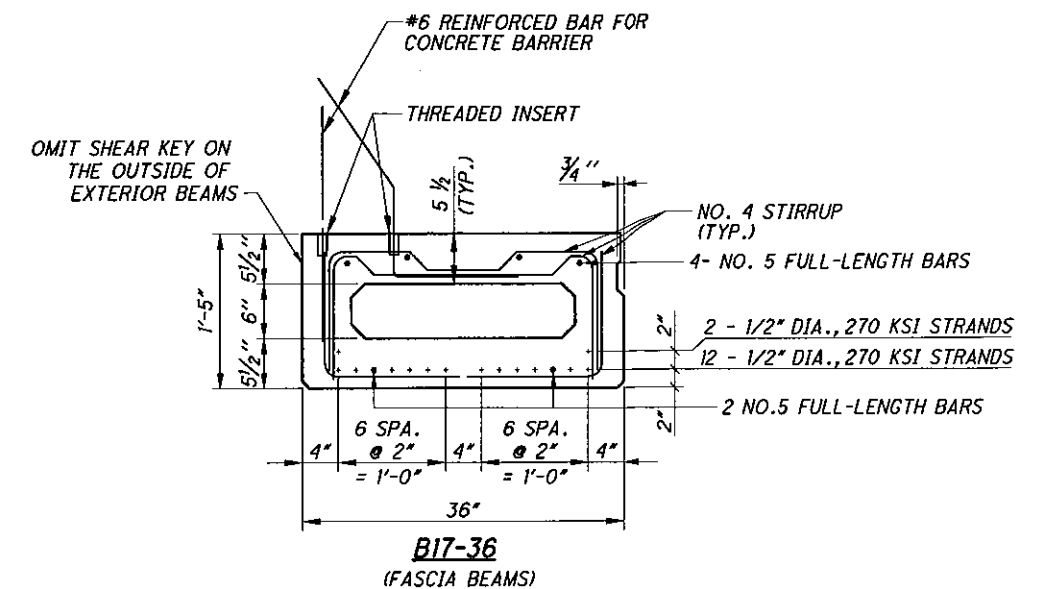




TYPICAL TRANSVERSE SECTION
* PLUS FIT-UP



BEAM LAYOUT



NOTES:

1. FOR SECTIONS A-A & B-B SEE SHEET **X/XX**
2. FOR PRESTRESSED BOX BEAM DETAILS SEE STD. DWG. PSBD-2-07.
3. FOR DEFLECTOR PARAPET DETAILS SEE STD. DWG. BR-1.

