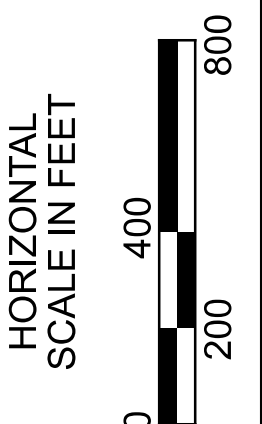


PLAN SHEET INFORMATION
 FROM RECORD PLANS:
 PID 5774: LAK-090-06.71
 SALE: 2005
 PID 75479: LAK-090-13.10
 SALE: 2011
 FOR REFERENCE PURPOSES ONLY
 (PERFORM ONLY PROPOSED WORK
 FOR PID 113132)



LOCATION 1A / 1B - PLAN SHEET
 LAKE COUNTY - I.R.-90

DESIGN DESIGNATION	SLM 6.93 to 7.108	SLM 7.108 to 7.668	SLM 7.668 to 7.738	SLM 7.738 to 9.247	SLM 9.247 to 9.548	SLM 9.548 to 9.627	SLM 9.627 to 13.10
LAK-IR90-LOCATION 1A							
OPEN YEAR ADT (2025)	73,000	73,000	64,000	63,500	63,500	63,500	52,500
DESIGN YEAR ADT (2045)	77,000	75,500	68,500	67,500	66,500	68,000	54,000
DESIGN HOURLY VOLUME (2045)	9,600	9,400	8,500	8,400	8,200	8,400	5,400
DIRECTIONAL DISTRIBUTION	59%	59%	63%	63%	63%	63%	70%
TRUCKS (24 HOUR B&C)	15%	12%	16%	16%	15%	16%	15%
LEGAL SPEED	65	65	65	65	65	65	65

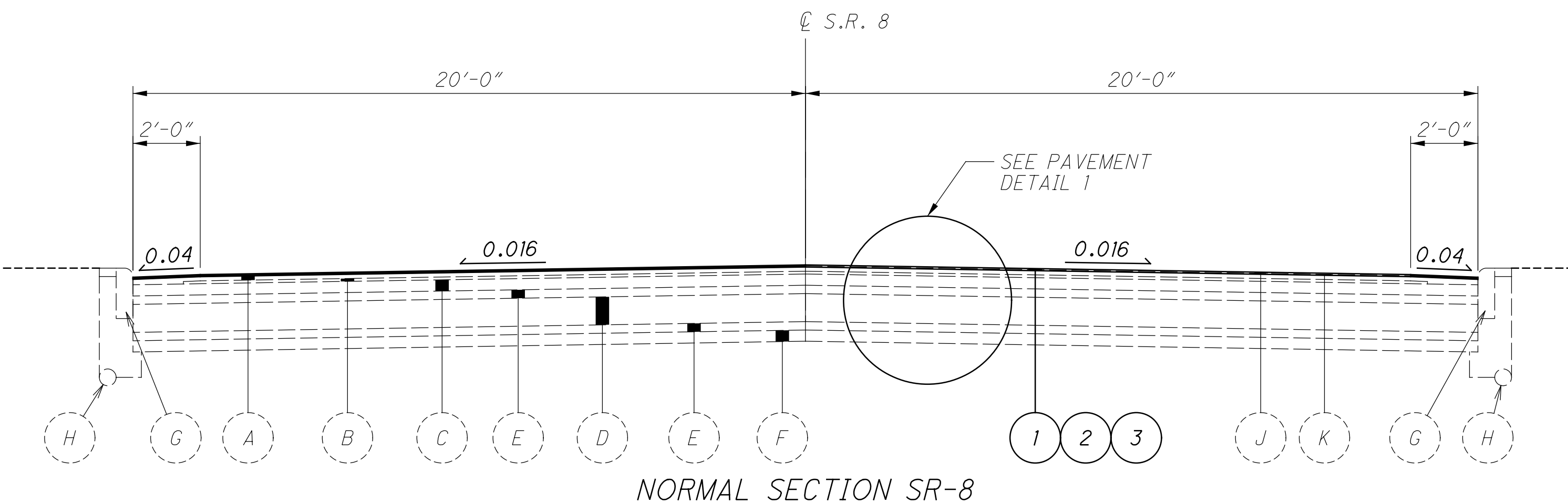
DESIGN DESIGNATION	BRDG SLM 13.70 R&L	BRDG SLM 14.87 R&L	BRDG SLM 16.41 R&L	BRDG SLM 20.03 R&L	BRDG SLM 21.10 R&L
LAK-IR90-LOCATION 1B					
OPEN YEAR ADT (2025)	52,500	47,500	47,500	40,500	40,500
DESIGN YEAR ADT (2045)	54,000	52,000	52,000	43,500	43,500
DESIGN HOURLY VOLUME (2045)	5,400	6,400	6,400	4,400	4,400
DIRECTIONAL DISTRIBUTION	70%	54%	54%	70%	70%
TRUCKS (24 HOUR B&C)	15%	24%	24%	20%	20%
LEGAL SPEED	65	65	65	65	65

DESIGN AGENCY

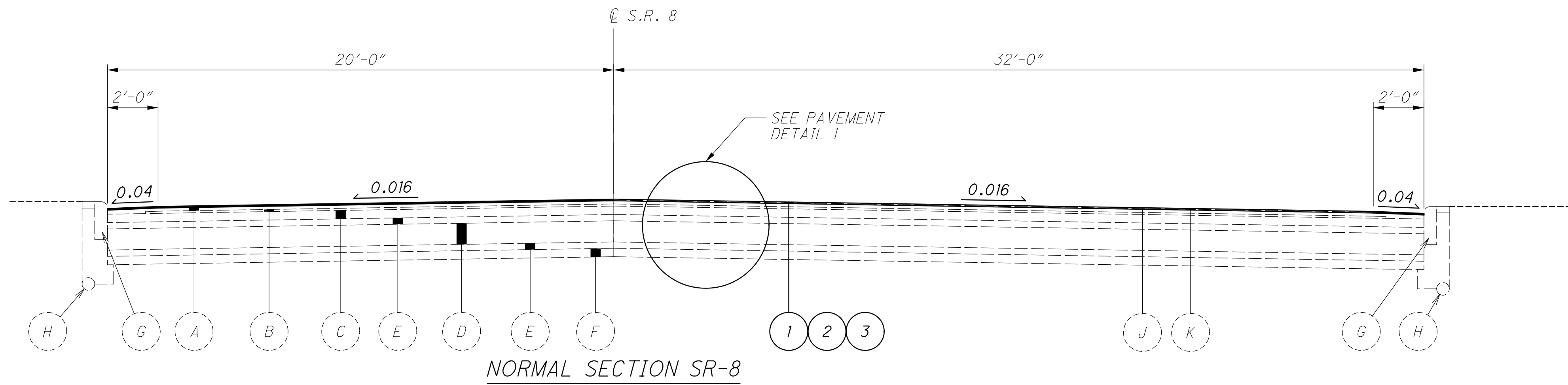


DESIGNER: JAG
 REVIEWER: B&B 10/11/24
 PROJECT ID: 113132
 SHEET: P.14 TOTAL: 42

TYPICAL SECTION INFORMATION
 FROM RECORD PLANS:
 PID 92611
 CUY-008-00.00
 SALE: 2016
 (PERFORM ONLY PROPOSED WORK
 FOR PID 113132)



NORMAL SECTION SR-8
 STA. 0+00 TO STA. 4+14
 STA. 7+40 TO STA. 13+40
 STA. 17+19 TO STA. 19+00
 STA. 33+88 TO STA. 65+70



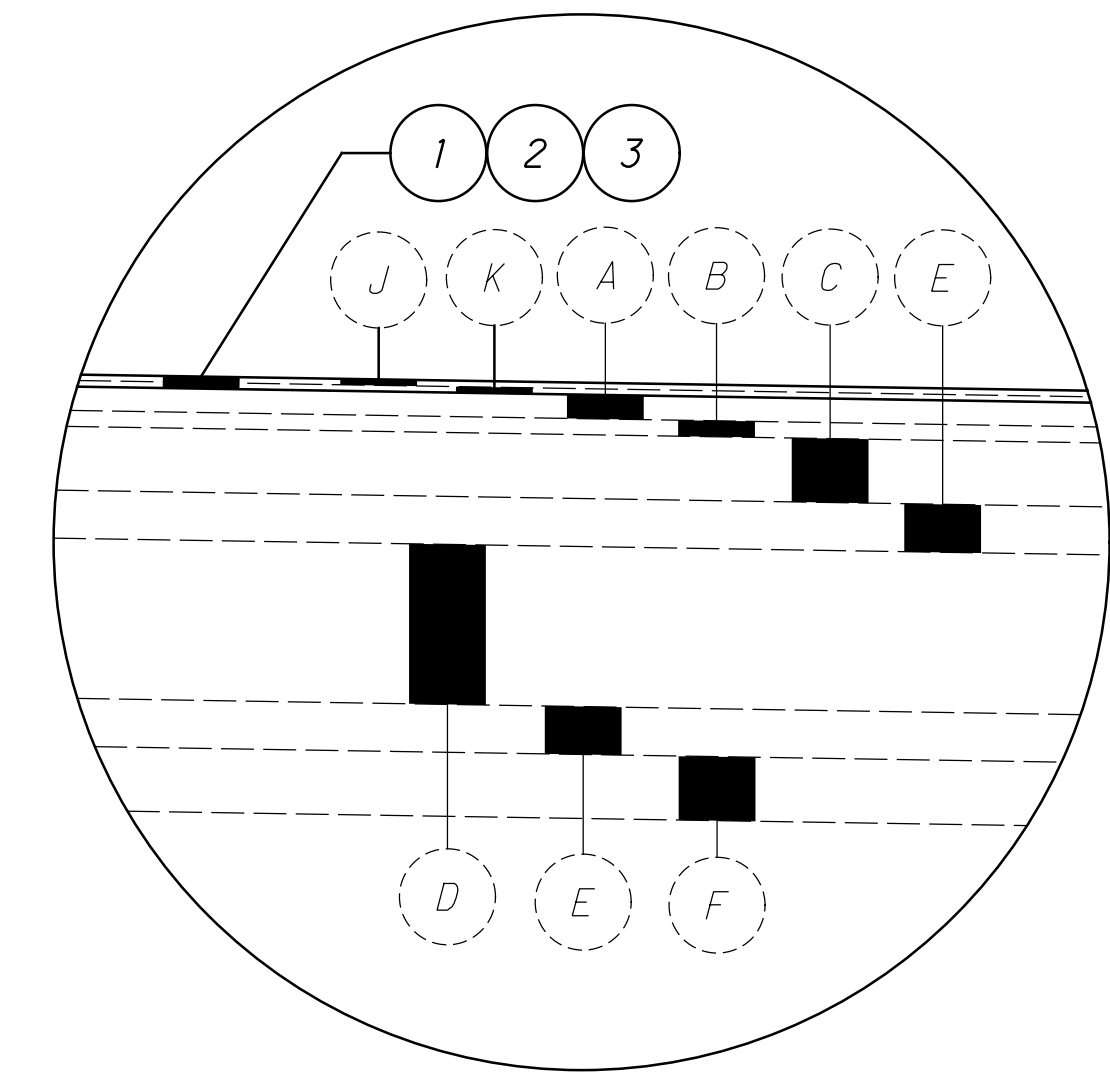
NORMAL SECTION SR-8
 STA. 4+14 TO STA. 7+40
 STA. 13+40 TO STA. 17+19
 STA. 19+00 TO STA. 20+78

EXISTING LEGEND

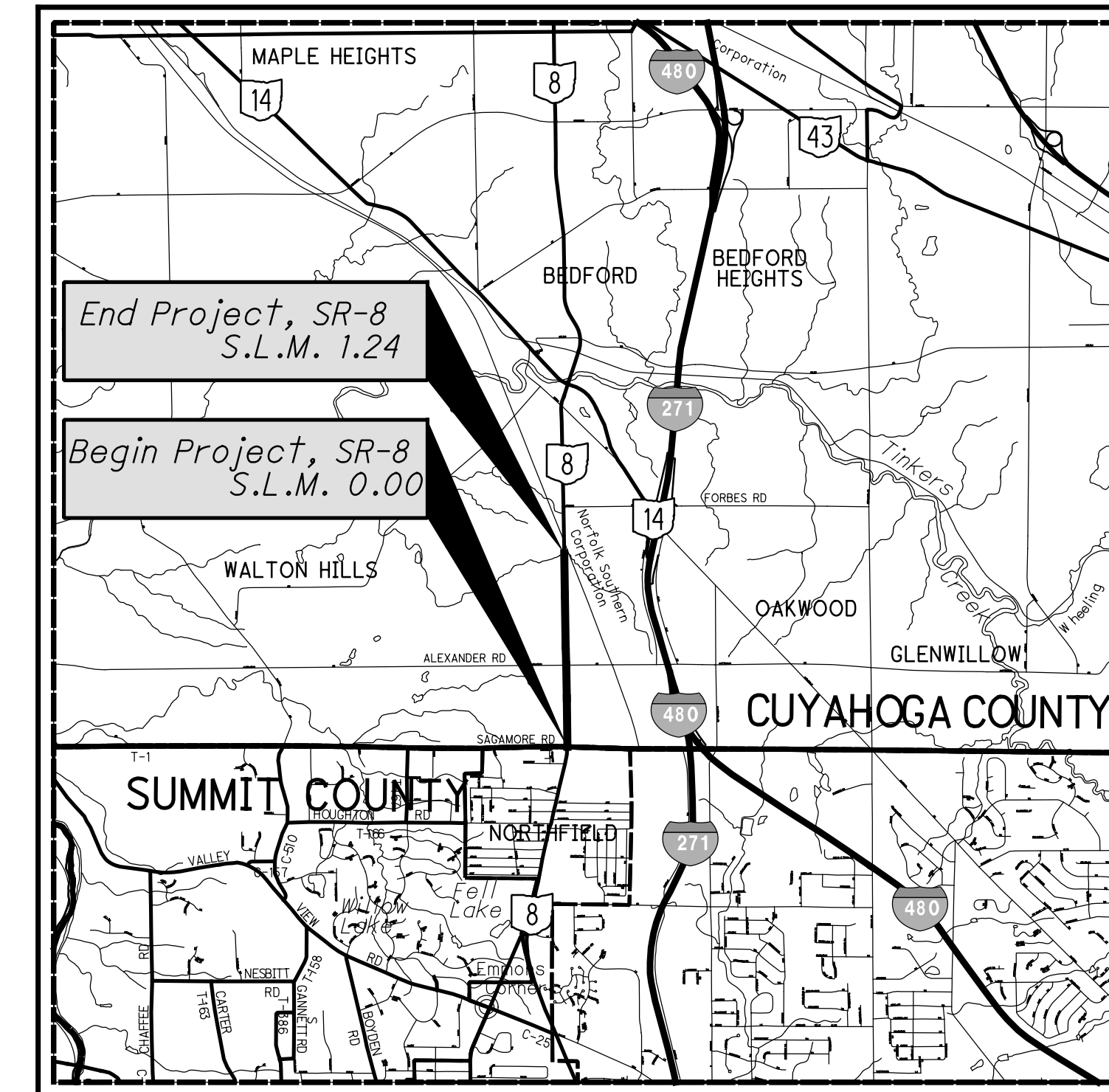
- (A) ASPHALT SURFACE COURSE, 1-1/2"
- (B) ASPHALT INTERMEDIATE COURSE, 1"
- (C) ASPHALT OVERLAY (3.75" TO 5.5"+)
- (D) REINFORCED CONCRETE BASE (10" TO 13.25")
- (E) 3" BRICK
- (F) 4" AGGREGATE BASE
- (G) CONCRETE CURB
- (H) UNDERDRAIN
- (J) ITEM 421 - MICROSURFACING, SURFACE COURSE (2016 PROJECT)
- (K) ITEM 421 - MICROSURFACING, LEVELING COURSE (2016 PROJECT)

PROPOSED LEGEND

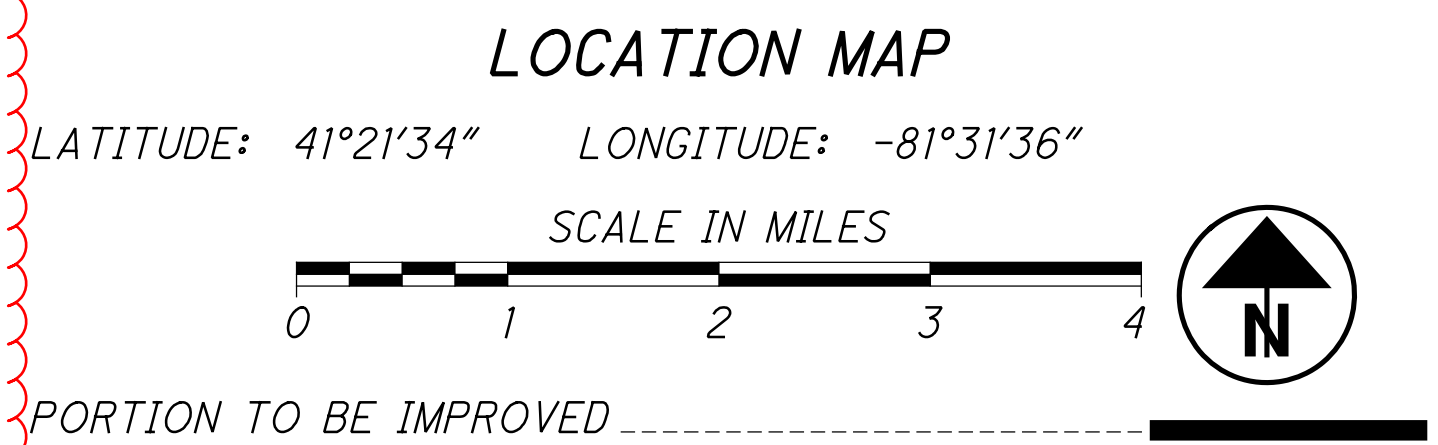
- ① ITEM 897 - PAVEMENT PLANING, ASPHALT CONCRETE, CLASS A (1")
- ② ITEM 407 - NON-TRACKING TACK COAT
- ③ ITEM 424 - FINE GRADED POLYMER ASPHALT CONCRETE, TYPE B (1")



PAVEMENT DETAIL 1



DESIGN DESIGNATION	SLM 0.00 to 0.525	SLM 0.525 to 1.24
CUY-SR008-LOCATION 2		
OPEN YEAR ADT (2025)	18,000	11,000
DESIGN YEAR ADT (2045)	18,000	11,500
DESIGN HOURLY VOLUME (2045)	2,000	1,500
DIRECTIONAL DISTRIBUTION	60%	54%
TRUCKS (24 HOUR B&C)	4%	10%
LEGAL SPEED	35	35



LOCATION 2
 S.R.- 8
 CUYAHOGA COUNTY