

UTILITIES

THERE ARE NO UNDERGROUND UTILITIES SHOWN ON THIS PLAN. THE NATURE OF THE WORK REQUIRED BY THIS PROJECT WILL NOT AFFECT ANY KNOWN UNDERGROUND UTILITIES THAT EXIST UNDER, OR ADJACENT TO, THE WORK AREA.

WORK LIMITS

THE WORK LIMITS SHOWN ON THESE PLANS ARE FOR PHYSICAL CONSTRUCTION ONLY. PROVIDE THE INSTALLATION AND OPERATION OF ALL WORK ZONE TRAFFIC CONTROL AND WORK ZONE TRAFFIC CONTROL DEVICES REQUIRED BY THESE PLANS WHETHER INSIDE OR OUTSIDE THESE WORK LIMITS.

ITEM 253 - PAVEMENT REPAIR, AS PER PLAN

PAVEMENT REPAIR SHALL BE IN ACCORDANCE WITH ITEM 253 - PAVEMENT REPAIR, WITH THE FOLLOWING ADDITIONS:

THE AREAS OF ITEM 253, PAVEMENT REPAIR, AS PER PLAN (2" DEPTH) ARE LOCATED THROUGHOUT THE PROJECT LIMITS. THE ENGINEER SHALL DESIGNATE THE LOCATIONS AND LIMITS OF THE AREAS TO BE REPAIRED. THE AREAS SHALL BE ROUGHLY RECTANGULAR IN SHAPE AND SAWED OR MILLED TO A NEAT LINE. THE DEPTH OF REMOVAL, AS DIRECTED BY THE ENGINEER, SHALL BE SUFFICIENT TO REMOVE ALL DETERIORATED PAVEMENT. THE ENTIRE AREA INCLUDING VERTICAL FACES SHALL BE COATED PRIOR TO PLACING THE REPLACEMENT MATERIAL PER 253.03. THE REPLACEMENT MATERIAL SHALL BE ITEM 441 - ASPHALT CONCRETE, INTERMEDIATE COURSE, TYPE 2, (448) AND DEPTH OF THE REPAIR SHALL BE MEASURED FROM THE EXISTING PAVEMENT SURFACE.

THE ESTIMATED PAVEMENT REPAIR AREAS SHALL BE A MINIMUM OF 2 FEET IN WIDTH AND 2 INCHES IN DEPTH OR AS DIRECTED BY THE ENGINEER.

THE FOLLOWING ESTIMATED QUANTITIES HAVE BEEN CARRIED TO THE GENERAL SUMMARY TO BE USED AS DIRECTED BY THE ENGINEER.

ITEM 253 - PAVEMENT REPAIR, AS PER PLAN = 40 SY

EQUIPMENT CALIBRATION

THE CONTRACTOR SHALL CALIBRATE THE MIXING EQUIPMENT AS PER 421.07. THIS CALIBRATION SHALL BE PERFORMED DURING NORMAL BUSINESS HOURS - MONDAY THROUGH FRIDAY, FROM 7:00 AM TO 5:00 PM.

TRUCK LOADING/HAULING

LOADS SHALL BE HELD TO A MAXIMUM LOAD OF SIXTEEN (16) TONS.

REVIEW OF DRAINAGE FACILITIES

PRIOR TO THE START OF WORK AND AGAIN BEFORE FINAL ACCEPTANCE, PERFORM AN INSPECTION WITH REPRESENTATIVES OF THE DEPARTMENT, CONTRACTOR AND LOCALS OF ALL EXISTING DRAINAGE FACILITIES THAT ARE TO REMAIN IN SERVICE WHICH MAY BE AFFECTED BY THE WORK. THE CONDITION OF THE EXISTING CONDUITS AND THEIR APPURTENANCES IS DETERMINED FROM FIELD OBSERVATIONS. RECORDS OF THE INSPECTION ARE MAINTAINED BY THE DEPARTMENT.

CONFIRM ALL EXISTING SEWERS INSPECTED INITIALLY BY THE ABOVE-MENTIONED PARTIES ARE MAINTAINED AND LEFT IN A CONDITION COMPARABLE TO THAT DETERMINED BY THE ORIGINAL INSPECTION. THE CONTRACTOR IS RESPONSIBLE TO CORRECT ANY CHANGE IN THE CONDITION RESULTING FROM THEIR OPERATIONS AS DIRECTED AND APPROVED BY THE ENGINEER.

CONTROL WORK

NO WORK SHALL BE PERFORMED THE TWO DAYS PRIOR TO A NATIONAL OR STATE HOLIDAY (MEMORIAL DAY, FORTH OF JULY, LABOR DAY, THANKSGIVING). NO WORK SHALL BE PERFORMED AFTER 12:00 NOON ON FRIDAYS UNTIL 6:00 AM ON MONDAYS. ALL WORK SHALL BE COMPLETED WITHIN FOURTEEN (14) DAYS OF STARTING THE PROJECT.

NO WORK SHALL BE STARTED THAT CANNOT BE COMPLETED TO A CONDITION THAT CAN BE OPENED TO THE PUBLIC, IN THE OPINION OF THE ENGINEER, BY FRIDAY NOON FOR A SPECIAL SCHEDULED EVENT. THE DATES OF SPECIAL EVENTS WILL BE SCHEDULED THROUGH THE DARKE COUNTY PARK DISTRICT.

THE ABOVE RESTRICTIONS WILL NOT APPLY TO AREAS THAT CAN BE COMPLETELY CLOSED FROM THE PUBLIC WITH THE APPROVAL OF THE PARK DISTRICT.

NOTIFICATION OF TRAFFIC RESTRICTIONS

THROUGHOUT THE DURATION OF THE PROJECT, THE CONTRACTOR SHALL NOTIFY THE PROJECT ENGINEER IN WRITING OF ALL TRAFFIC RESTRICTIONS AND UPCOMING MAINTENANCE OF TRAFFIC CHANGES. THE CONTRACTOR SHALL ENSURE THE WRITTEN NOTIFICATION IS SUBMITTED IN A TIMELY MANNER TO ALLOW THE PROJECT ENGINEER TO MEET THE REQUIRED TIME FRAMES SET FORTH IN THE TABLE BELOW TO INFORM THE SPECIAL HAULING PERMITS SECTION (HAULING.PERMITS@DOT.OHIO.GOV) AND THE DISTRICT PUBLIC INFORMATION OFFICE (PIO). THIS NOTIFICATION SHALL BE RECEIVED BY THE PROJECT ENGINEER PRIOR TO THE PHYSICAL SETUP OF ANY APPLICABLE SIGNS OR MESSAGE BOARDS.

INFORMATION SHOULD INCLUDE, BUT IS NOT LIMITED TO, ALL CONSTRUCTION ACTIVITIES THAT IMPACT OR INTERFERE WITH TRAFFIC AND SHALL LIST THE SPECIFIC LOCATION, TYPE OF WORK, ROAD STATUS, DATE AND TIME OF RESTRICTION, DURATION OF RESTRICTION, NUMBER OF LANES MAINTAINED, NUMBER OF LANES CLOSED, MINIMUM VERTICAL CLEARANCE, MINIMUM WIDTH OF DRIVABLE PAVEMENT, DETOUR ROUTES, IF APPLICABLE, AND ANY OTHER INFORMATION REQUESTED BY THE PROJECT ENGINEER.

NOTICE OF CLOSURE SIGN TIME TABLE		
ITEM	DURATION OF CLOSURE	SIGN DISPLAYED TO PUBLIC
RAMP & ROAD CLOSURES	>= 2 WEEKS	21 CALENDAR DAYS PRIOR TO CLOSURE
	>12 HOURS & <2 WEEKS	14 CALENDAR DAYS PRIOR TO CLOSURE
	<= 12 HOURS	4 CALENDAR DAYS PRIOR TO CLOSURE
LANE CLOSURES & RESTRICTIONS	>= 2 WEEKS	14 CALENDAR DAYS PRIOR TO CLOSURE
	< 2 WEEKS	5 BUSINESS DAYS PRIOR TO CLOSURE
START OF CONSTRUCTION & TRAFFIC PATTERN CHANGES	N/A	14 CALENDAR DAYS PRIOR TO IMPLEMENTATION

ANY UNFORESEEN CONDITIONS NOT SPECIFIED IN THE PLANS REQUIRING TRAFFIC RESTRICTIONS SHALL ALSO BE REPORTED TO THE PROJECT ENGINEER USING THE NOTIFICATION TIME TABLE.

ITEM 614 - MAINTAINING TRAFFIC

THE CONTRACTORS SHALL FURNISH AND PLACE ALL SIGNS, LIGHTS AND BARRIERS TO CLOSE AREAS, WHEN PERMITTED DURING OPERATIONS. THE CONTRACTOR SHALL FURNISH AND PLACE SIGNS TO CONTROL TRAFFIC IN AREAS OPEN TO TRAFFIC, AS DIRECTED BY THE ENGINEER. ALL WORK AND TRAFFIC CONTROL DEVICES SHALL BE IN ACCORDANCE WITH CMS 614 AND OTHER APPLICABLE PORTIONS OF THE SPECIFICATIONS, AS WELL AS THE OHIO MANUAL OF UNIFORM TRAFFIC CONTROL DEVICES.

THE CONTRACTOR SHALL KEEP THE ENTRANCE DRIVE MAINTAINED FOR TRAFFIC IN AND OUT OF THE PARK TO THE MAXIMUM EXTENT PRACTICABLE (SEE FLEXIBLE START WINDOW CONTRACT NOTE).

PAYMENT FOR ALL LABOR, EQUIPMENT AND MATERIALS SHALL BE INCLUDED IN THE LUMP SUM CONTRACT PRICE FOR ITEM 614, MAINTAINING TRAFFIC, UNLESS SEPARATELY ITEMIZED IN THE PLAN.

FLEXIBLE START WINDOW CONTRACT

THE CONTRACTOR SHALL FOLLOW THE FLEXIBLE START WINDOW CONTRACT FOR THE CRITICAL WORK AS INDICATED BELOW. THE CONTRACTOR WILL BE ASSESSED A DISINCENTIVE FOR EACH CALENDAR DAY.

FLEXIBLE START WINDOW CONTRACT TABLE (PN 129)

DESCRIPTION OF CRITICAL WORK	CONSECUTIVE CALENDAR DAYS TO COMPLETE	DISINCENTIVE \$ PER DAY	WORK WINDOW	
			START	END
ALL WORK ON PROJECT	30	PER CMS 108.07	7/7/2025	8/29/2025

TO THE GREATEST EXTENT POSSIBLE, THE CONTRACTOR SHALL OPEN THE DRIVE AND PARKING LOT TO TRAFFIC IN THE WAITING PERIOD BETWEEN COMPLETING THE CHIP SEAL AND THE FOG SEAL/APPLICATION OF MARKINGS.

**ITEM 422 - AGGREGATE, SINGLE CHIP SEAL, TYPE A, AS PER PLAN
ITEM 422 - EMULSION, CHIP SEAL, AS PER PLAN**

THE REQUIREMENTS OF 422 APPLY EXCEPT AS FOLLOWS:

THE SECOND SENTENCE OF 422.01 IS DELETED. THE REQUIREMENTS OF 422.05 AND 422.12 ARE DELETED IN THEIR ENTIRETY.

CENTERLINE DELINEATION IS REQUIRED TO BE IN PLACE IN ANY SECTION OF UNFLAGGED WORK ZONE

COORDINATION WITH DARKE COUNTY PARK DISTRICT

THE CONTRACTOR SHALL COORDINATE WITH THE DARKE COUNTY PARK DISTRICT AND INFORM THEM OF THE SCHEDULE OF PROJECT ACTIVITIES.

DARKE COUNTY PARK DISTRICT
ROBB CLIFFORD
EXECUTIVE DIRECTOR
4267 OH-502, GREENVILLE, OH 45331
OFFICE: 937-548-0165
RCLIFFORD@DARKECOUNTYPARKS.ORG

PROTECTION OF WATER RESOURCES

THE CONTRACTOR SHALL NOT DISCHARGE TOXIC OR HAZARDOUS MATERIALS SUCH AS SEALANTS, PAINT, SOLVENTS, CLEANING AGENTS EARTHEN MATERIALS, WASTE-WATER, FUELS OR DEBRIS OF ANY KIND TO A WATERWAY. IF REFUELING OF IMMOBILE EQUIPMENT IS NECESSARY WITHIN THE FLOODPLAIN OR NEAR ANY TRIBUTARY DRAINAGE WAYS, DITCHES OR STREAM, THE CONTRACTOR SHALL PROVIDE SECONDARY CONTAINMENT WITH ENOUGH CAPACITY TO COMPLETELY CONTAIN AND COLLECT ALL POTENTIAL LIQUID WASTES IN THE EVENT OF A SPILL.

ANY AND ALL CONSTRUCTION DEBRI, EARTHEN DEBRIS, EXCESS ASPHALT OR CONCRETE, WOOD DEBRIS FROM CLEARING, EXCESS FILL MATERIAL, AND TRASH SHOULD BE DISPOSED OF AT AN APPROVED UPLAND SITE OR LAND FILL ABOVE FEMA 100-YEAR FLOOD ELEVATIONS. DISPOSAL OF ANY SUCH MATERIALS WITHIN 1000 FEET OF A SCENIC RIVER IS PROHIBITED.

IN ACCORDANCE WITH ORC 3750.06, SPILLS MUST BE REPORTED TO THE LOCAL FIRE DEPARTMENT (911); THE LOCAL EMERGENCY COORDINATOR (937-548-2020), AND THE OHIO SPILL LINE (1-800-282-9378).

THE CONTRACTOR SHALL KEEP ALL IDLE EQUIPMENT, FUELS, LUBRICANTS, AND ANY STORAGE FOR/OF POTENTIALLY TOXIC OR HAZARDOUS MATERIALS OUT OF THE FEMA DESIGNATED SPECIAL FLOOD HAZARD AREA AND NOT WITHIN 1000 FEET OF A SCENIC RIVER.

DESIGN AGENCY



DESIGNER

ANW

REVIEWER

CWW 03/30/22

PROJECT ID

115466

SHEET TOTAL

P.3 6

SHEET NUM.

PART.

ITEM

ITEM

GRAND

UNIT

DESCRIPTION

SEE SHEET NO.

01/NFP/05

ITEM

EXT

TOTAL

2

4

6

OFFICE

530.3

SPECIAL

69098900

530.3

GAL

SPECIAL-FOG SEAL

4

ROADWAY

530.3

1,000

832

30000

1,000

EACH

EROSION CONTROL

EROSION CONTROL

PAVEMENT

40

40

253

01000

40

SY

PAVEMENT REPAIR

4,284

4,284

422

11001

4,284

SY

AGGREGATE, SINGLE CHIP SEAL, TYPE A, AS PER PLAN

3

1,714

1,714

422

25001

1,714

GAL

EMULSION, CHIP SEAL, AS PER PLAN

3

12

12

617

10100

12

CY

COMPACTED AGGREGATE

TRAFFIC CONTROL

1,500

1,500

642

30000

1,500

FT

REMOVAL OF PAVEMENT MARKING

450

450

642

00700

450

FT

TRANSVERSE/DIAGONAL LINE, TYPE 1

2

2

642

01702

2

EACH

HANDICAP SYMBOL MARKING, TYPE 1

1,040

1,040

642

01200

1,040

FT

PARKING LOT STALL MARKING, TYPE 1

4

4

642

01300

4

EACH

LANE ARROW, TYPE 1

INCIDENTALS

LS

614

11000

LS

MAINTAINING TRAFFIC

LS

624

10000

LS

MOBILIZATION

GENERAL SUMMARY

DESIGN AGENCY



DESIGNER

ANW

REVIEWER

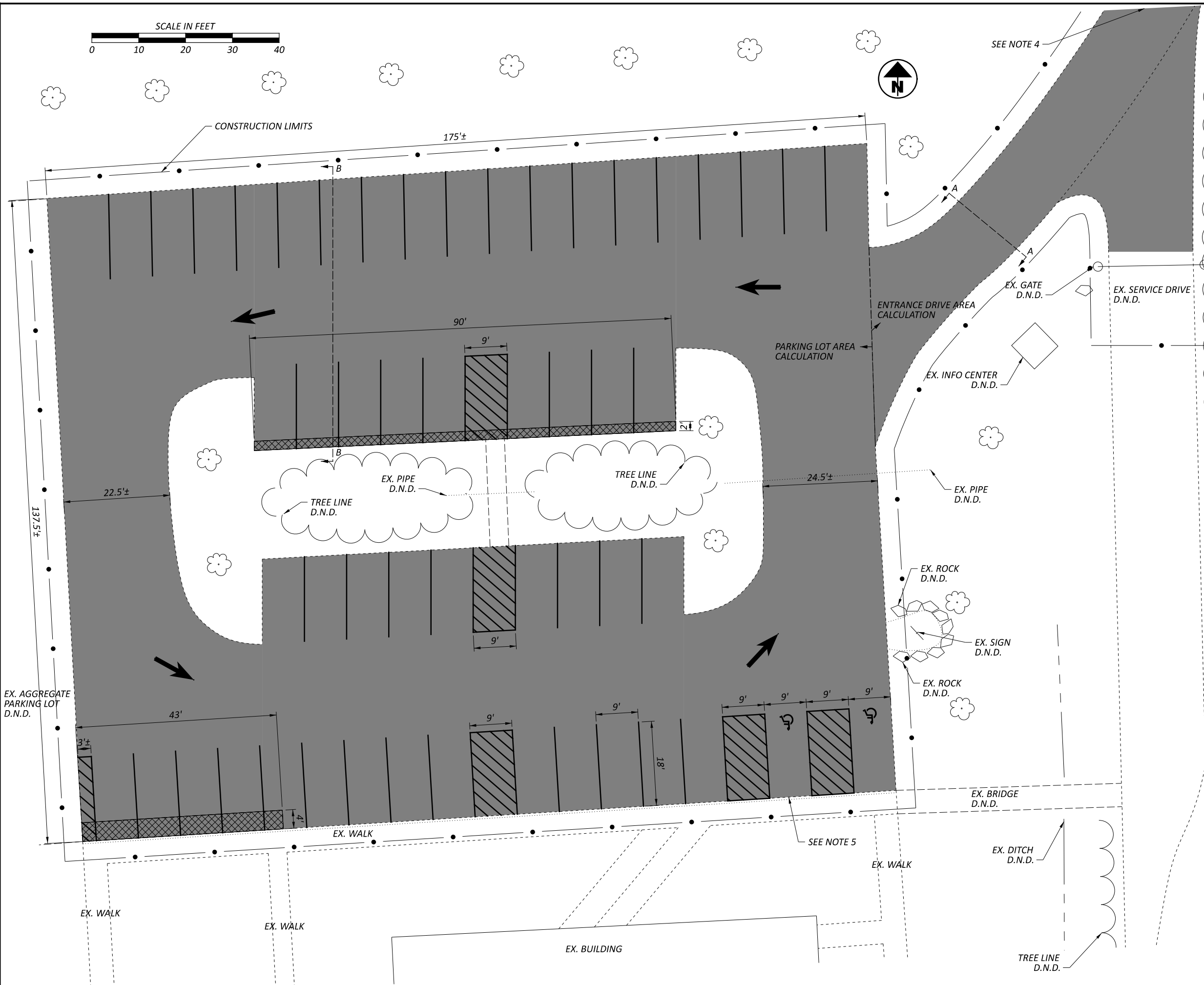
CWW 03/30/22

PROJECT ID

115466

SHEET TOTAL

P.5 6



NOTES & LEGEND

- ENTRANCE DRIVE
- ITEM 422 - AGGREGATE, SINGLE CHIP SEAL, TYPE A, AS PER PLAN (2188 SY)
- PARKING LOT
- ITEM 422 - AGGREGATE, SINGLE CHIP SEAL, TYPE A, AS PER PLAN (2231 SY)
- ITEM 253 - PAVEMENT REPAIR (40 SY)
- ITEM 642 - TRANSVERSE/DIAGONAL LINE (450 FT)
- ITEM 642 - PARKING LOT STALL MARKING (1040 FT)
- ITEM 642 - LANE ARROW (4 EACH)
- ITEM 642 - HANDICAP SYMBOL MARKING (2 EACH)

1. NO CLEARING OR GRUBBING NECESSARY
2. ALL PARKING STALLS SHOULD BE 9' x 18'
3. D.N.D. = DO NOT DISTURB
4. CHIP SEAL THE ENTRANCE DRIVE STARTING AT SR 502 AND MEETING AT THE PARKING LOT.
5. MAKE PROPOSED PARKING LOT ELEVATION FLUSH WITH THE EXISTING WALK RAMP.

PARKING LOT PLAN VIEW

DESIGN AGENCY	STATE OF OHIO DEPARTMENT OF TRANSPORTATION
DESIGNER	ANW
REVIEWER	CWW 03/30/22
PROJECT ID	115466
SHEET TOTAL	P.6 6