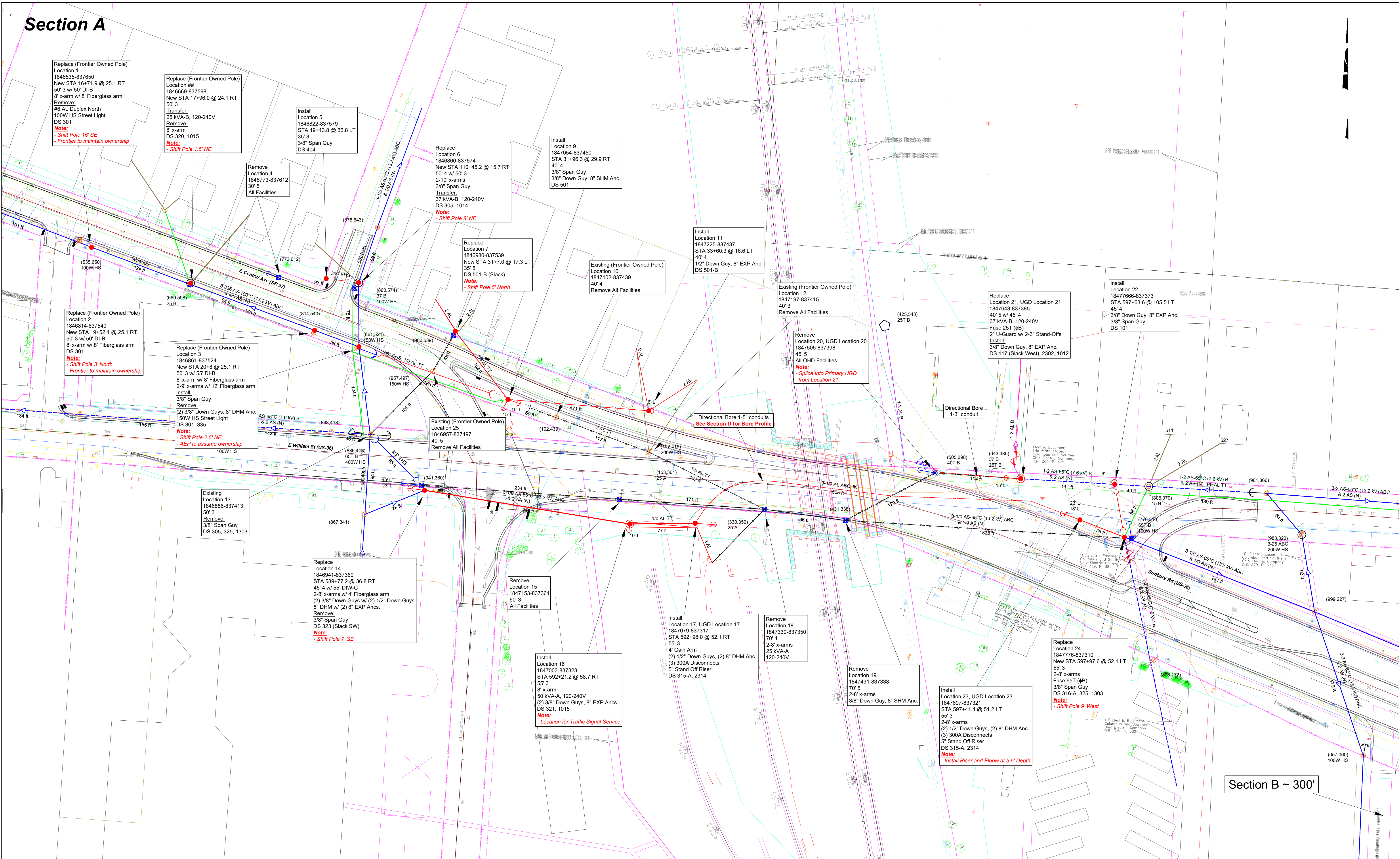


Section A



Replace (Frontier Owned Pole)
Location 1
1846535-837650
New STA 16+71.9 @ 25.1 RT
50' 3 w/ 50' DI-B
8' x-arm w/ 8' Fiberglass arm
Remove:
#6 AL Duplex North
100W HS Street Light
DS 301
Note:
- Shift Pole 16' SE
- Frontier to maintain ownership

Replace (Frontier Owned Pole)
Location 2
1846669-837598
New STA 17+96.0 @ 24.1 RT
50' 3
Transfer:
25 kVA-B, 120-240V
Remove:
8' x-arm
DS 320, 1015
Note:
- Shift Pole 1.5' NE

Install
Location 5
1846822-837579
STA 19+43.8 @ 36.8 LT
35' 3
3/8" Span Guy
DS 404

Replace
Location 6
1846860-837574
New STA 110+45.2 @ 15.7 RT
50' 4 w/ 50' 3
2-10' x-arms
3/8" Span Guy
Transfer:
37 kVA-B, 120-240V
DS 305, 1014
Note:
- Shift Pole 8' NE

Install
Location 9
1847054-837450
STA 31+96.3 @ 29.9 RT
40' 4
3/8" Span Guy
3/8" Down Guy, 8" SHM Anc.
DS 501

Install
Location 11
1847225-837437
STA 33+60.3 @ 16.6 LT
40' 4
1/2" Down Guy, 8" EXP Anc.
DS 501-B

Existing (Frontier Owned Pole)
Location 10
1847102-837439
40' 4
Remove All Facilities

Replace
Location 21, UGD Location 21
1847643-837385
40' 5 w/ 45' 4
37 kVA-B, 120-240V
Fuse 25T (#B)
2" Li-Guard w/ 2-3" Stand-Offs
Install:
3/8" Down Guy, 8" EXP Anc.
DS 117 (Slack West), 2302, 1012
Note:
- Splice Into Primary UGD
from Location 21

Install
Location 22
1847766-837373
STA 597+63.6 @ 105.5 LT
45' 4
3/8" Down Guy, 8" EXP Anc.
3/8" Span Guy
DS 101

Replace (Frontier Owned Pole)
Location 2
1846814-837540
New STA 19+52.4 @ 25.1 RT
50' 3 w/ 50' DI-B
8' x-arm w/ 8' Fiberglass arm
DS 301
Note:
- Shift Pole 3' North
- Frontier to maintain ownership

Replace (Frontier Owned Pole)
Location 3
1846861-837524
New STA 20+8 @ 25.1 RT
50' 3 w/ 55' DI-B
8' x-arm w/ 8' Fiberglass arm
2-9' x-arms w/ 12' Fiberglass arm
Install:
3/8" Span Guy
Remove:
(2) 3/8" Down Guys, 8" DHM Anc.
150W HS Street Light
DS 301, 335
Note:
- Shift Pole 2.5' NE
- AEP to assume ownership

Replace
Location 7
1846980-837539
New STA 31+7.0 @ 17.3 LT
35' 5
DS 501-B (Slack)
3/8" Span Guy
Note:
- Shift Pole 5' North

Existing (Frontier Owned Pole)
Location 12
1847197-837415
40' 3
Remove All Facilities

Remove
Location 20, UGD Location 20
1847505-837398
45' 5
All OHD Facilities
Note:
- Splice Into Primary UGD
from Location 21

Existing (Frontier Owned Pole)
Location 25
1846957-837497
40' 5
Remove All Facilities

Directional Bore 1-5" conduits
See Section D for Bore Profile

Directional Bore
1-3" conduit

Existing
Location 13
1846886-837413
50' 3
Remove:
3/8" Span Guy
DS 305, 325, 1303

Replace
Location 14
1846941-837360
STA 589+77.2 @ 36.8 RT
45' 4 w/ 55' DIW-C
2-9' x-arms w/ 4' Fiberglass arm
(2) 3/8" Down Guys w/ (2) 1/2" Down Guys
8" DHM w/ (2) 8" EXP Ancs.
Remove:
3/8" Span Guy
DS 323 (Slack SW)
Note:
- Shift Pole 7' SE

Remove
Location 15
1847153-837381
60' 3
All Facilities

Install
Location 17, UGD Location 17
1847079-837317
STA 592+98.0 @ 52.1 RT
55' 3
4' Gain Arm
(2) 1/2" Down Guys, (2) 8" DHM Anc.
(3) 300A Disconnects
5" Stand Off Riser
DS 315-A, 2314

Remove
Location 18
1847330-837350
70' 4
2-8' x-arms
25 kVA-A
120-240V

Install
Location 16
1847003-837323
STA 592+21.2 @ 58.7 RT
55' 3
8' x-arm
50 kVA-A, 120-240V
(2) 3/8" Down Guys, 8" EXP Ancs.
DS 321, 1015
Note:
- Location for Traffic Signal Service

Remove
Location 19
1847431-837338
70' 5
2-8' x-arms
3/8" Down Guy, 8" SHM Anc.

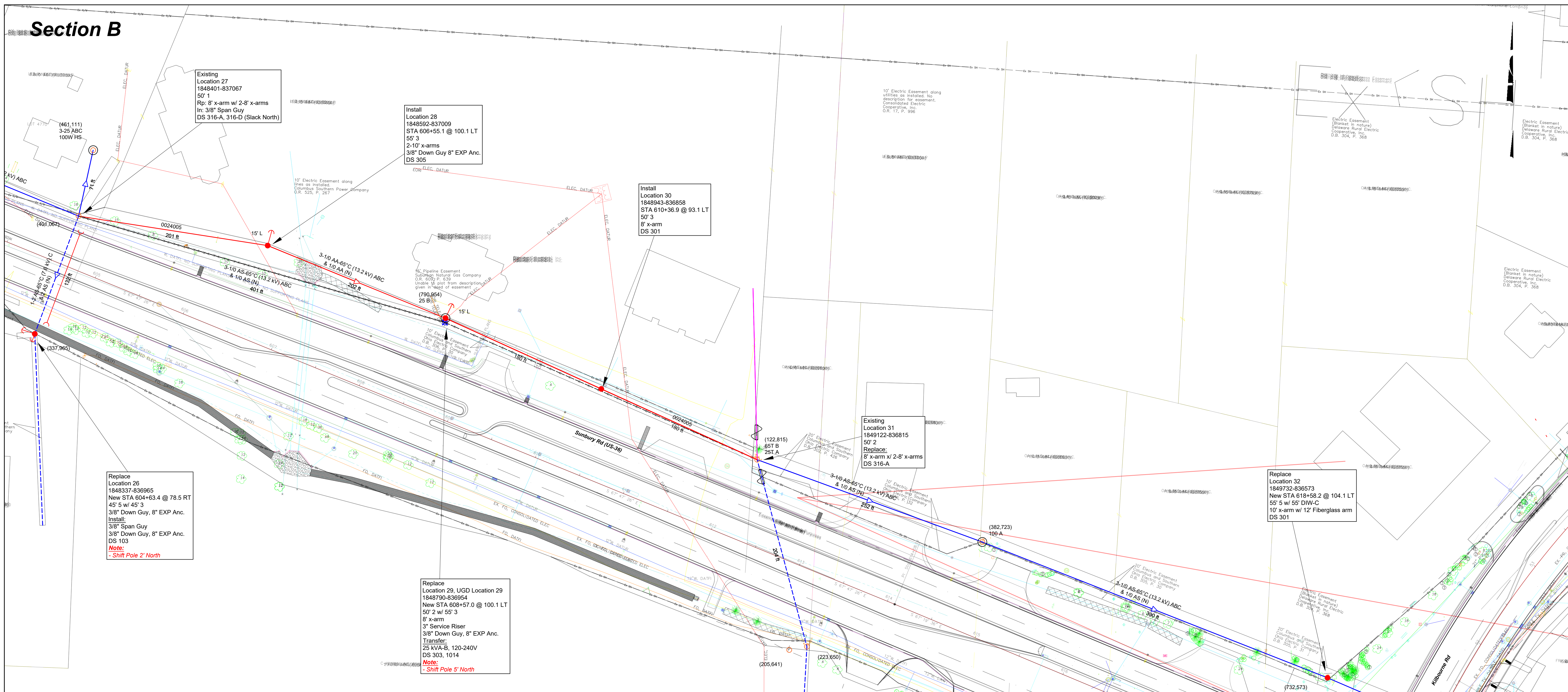
Install
Location 23, UGD Location 23
1847697-837321
STA 597+41.4 @ 51.2 LT
55' 3
2-8' x-arms
(2) 1/2" Down Guys, (2) 8" DHM Anc.
(3) 300A Disconnects
5" Stand Off Riser
DS 315-A, 2314
Note:
- Install Riser and Elbow at 5.5' Depth

Replace
Location 24
1847776-837310
New STA 597+97.6 @ 52.1 LT
55' 3
2-8' x-arms
Fuse 65T (#B)
3/8" Span Guy
DS 316-A, 325, 1303
Note:
- Shift Pole 9' West

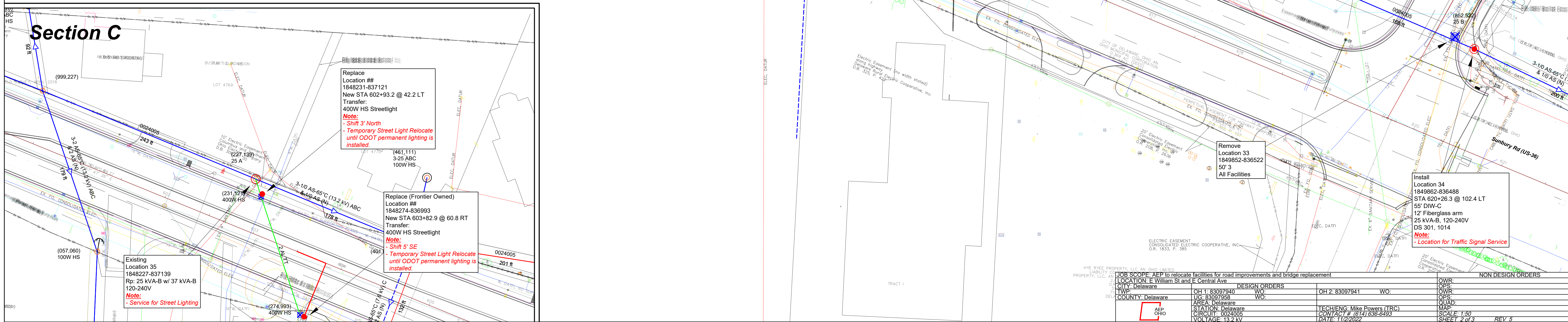
Section B ~ 300'

JOB SCOPE: AEP to relocate facilities for road improvements and bridge replacement				NON DESIGN ORDERS	
LOCATION: E William St and E Central Ave					
CITY: Delaware		DESIGN ORDERS		OWR:	
TWP: UG		OH 1: 83097940		OPS:	
COUNTY: Delaware		UG: 83097940		OWR:	
		WO:		OPS:	
		OH 2: 83097941		WO:	
		AREA: Delaware		QUAD:	
		STATION: Delaware		MAP:	
		CIRCUIT: 002405		SCALE: 1"=50'	
		VOLTAGE: 13.2 kV		DATE: 11/2/2022	
		TECH/ENG: Mike Powers (TRC)		SHEET 1 of 3	
		DATE: 11/2/2022		REV: 5	

Section B



Section C



JOB SCOPE: AEP to relocate facilities for road improvements and bridge replacement LOCATION: E William St and E Central Ave CITY: Delaware TWP: Delaware COUNTY: Delaware		DESIGN ORDERS OH1: 83097940 LIC: R3097940 WO:		OH2: 83097941 WO:		NON DESIGN ORDERS OWR: OPS: OWR: OPS: QUAD: MAP: SCALE: 1"=50' SHEET 2 of 3 REV: 5	
CONTRACTOR: AEP PROJECT: AEP VOLTAGE: 13.2 kV		DATE: 11/2/2022		CONTRACTOR: TECHENG Mike Powers (TRC) DATE: 11/2/2022			