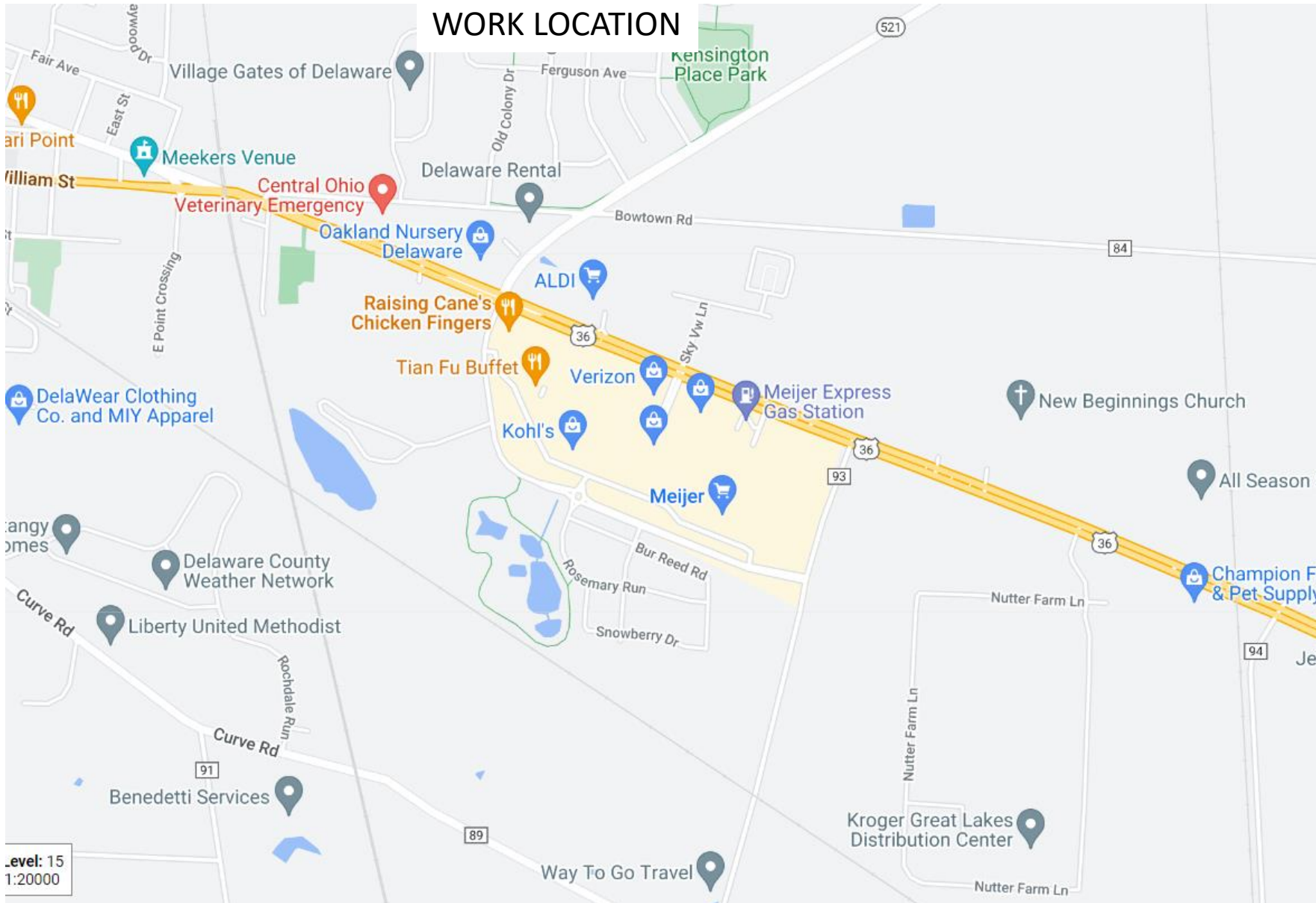


WORK LOCATION



Level: 15
1:20000

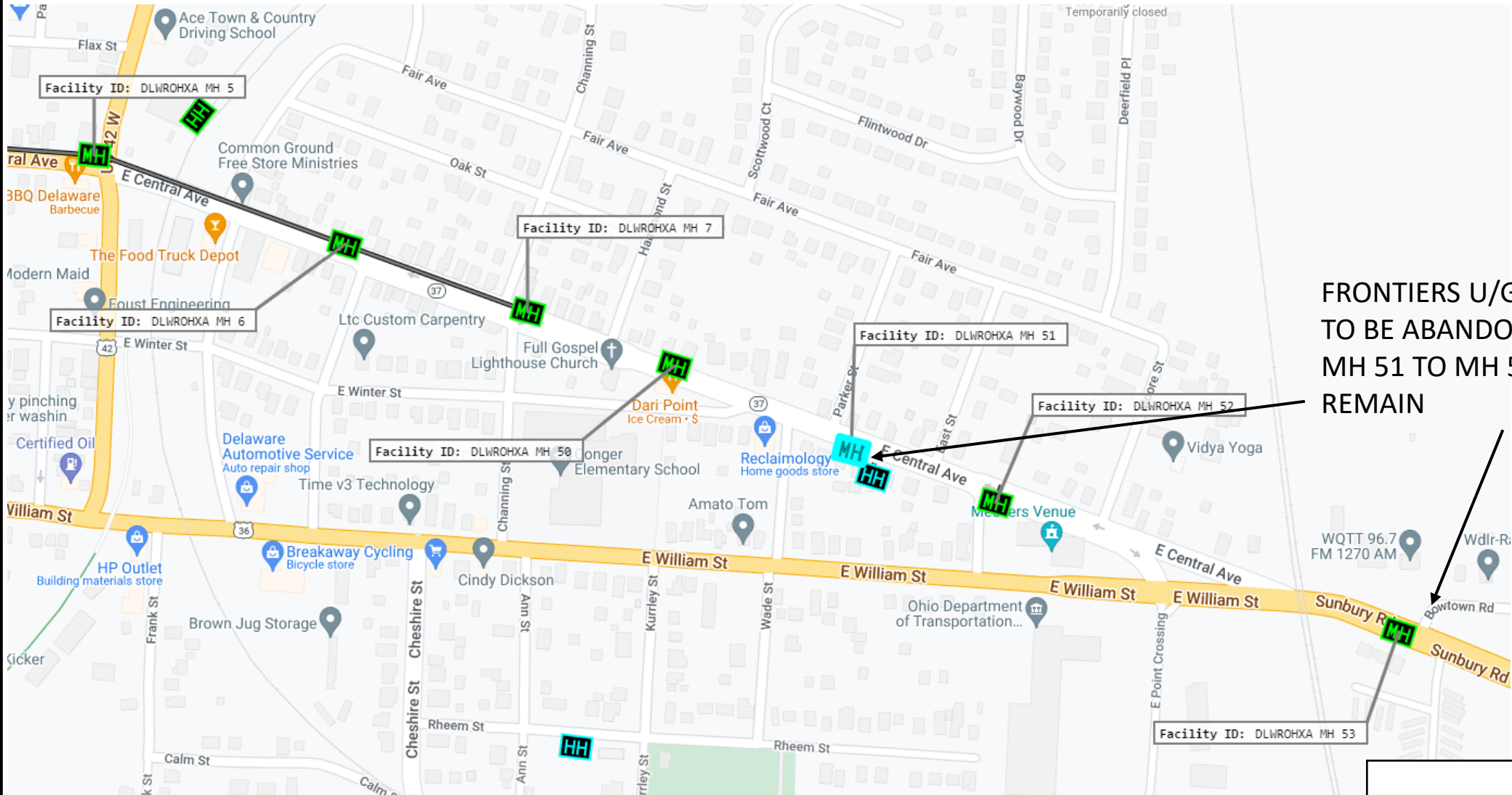
LEGEND:
 SHT#1-LOCATION MAP
 SHTS#2-10-CONSTRUCTION PRINTS
 CONTACT CHRIS AVERY 2 WEEKS
 PRIOR TO CONSTRUCTION
 740-383-0551

PERMITS TO BE ISSUED:
 CITY OF DELAWARE
 SHEETS# 1-10 (NO A OR B SHEETS)

PROPOSALS TO BE ISSUED TO
 AEP AND CATV
 OH. Poleadmin@ftr.com

REVISIONS		
Frontier COMMUNICATIONS		
DELAWARE 36/37 ROAD MOVE		
PROJECT NUMBER:	2469701	CO AREA: MEDINA EXCHANGE CODE:
DRAWN DATE:	4/10/20	ENG: BRAD SNYDER
SCALE:	NIS	TAX DISTRICT:
TWP:	RANGE:	SEC:

1 of 10



FRONTIERS U/G FACILITIES TO BE ABANDONED FROM MH 51 TO MH 53. MH 51 TO REMAIN

1A of 10

REVISIONS		
Frontier COMMUNICATIONS		
DELAWARE -36-11.03		
PROJECT NUMBER:	2469701	CO AREA: MEDINA EXCHANGE CODE:
DRAWN DATE:	4/10/20	ENG: BRAD SNYDER
SCALE:	NIS	TAX DISTRICT:
TWP:	RANGE:	SEC:

← CO
 E CENTRAL AVE
 (SR 37)
 L26750

LAKE ST

E. CENTRAL AVE

MH#5



2422.201 1678'
 01.1997
 YFD 36
 (DLWROHXA F316, 37-60)
 (DLWROHXA TK316, 61-72)
DEAD, 1-36

2422.201
 YFD 84
 2736' 01.1994
 DLWROHXA TK315,1-12+
 DLWROHXA TK316,1-12+
 DLWROHXA F316,13-60+
 DLWROHXA TK316,61-72

2422.201 1512'
 02.2014
 UFO72
 DLWROHXA F321, 1-2
 DEAD, 3
 DLWROHXA F316, 29-36
 (DEAD, 12-72)
DLWROHXA F316, 37-60
DLWROHXA TK316, 61-72
 DEAD, 48-72

MATCH SHEET # 3

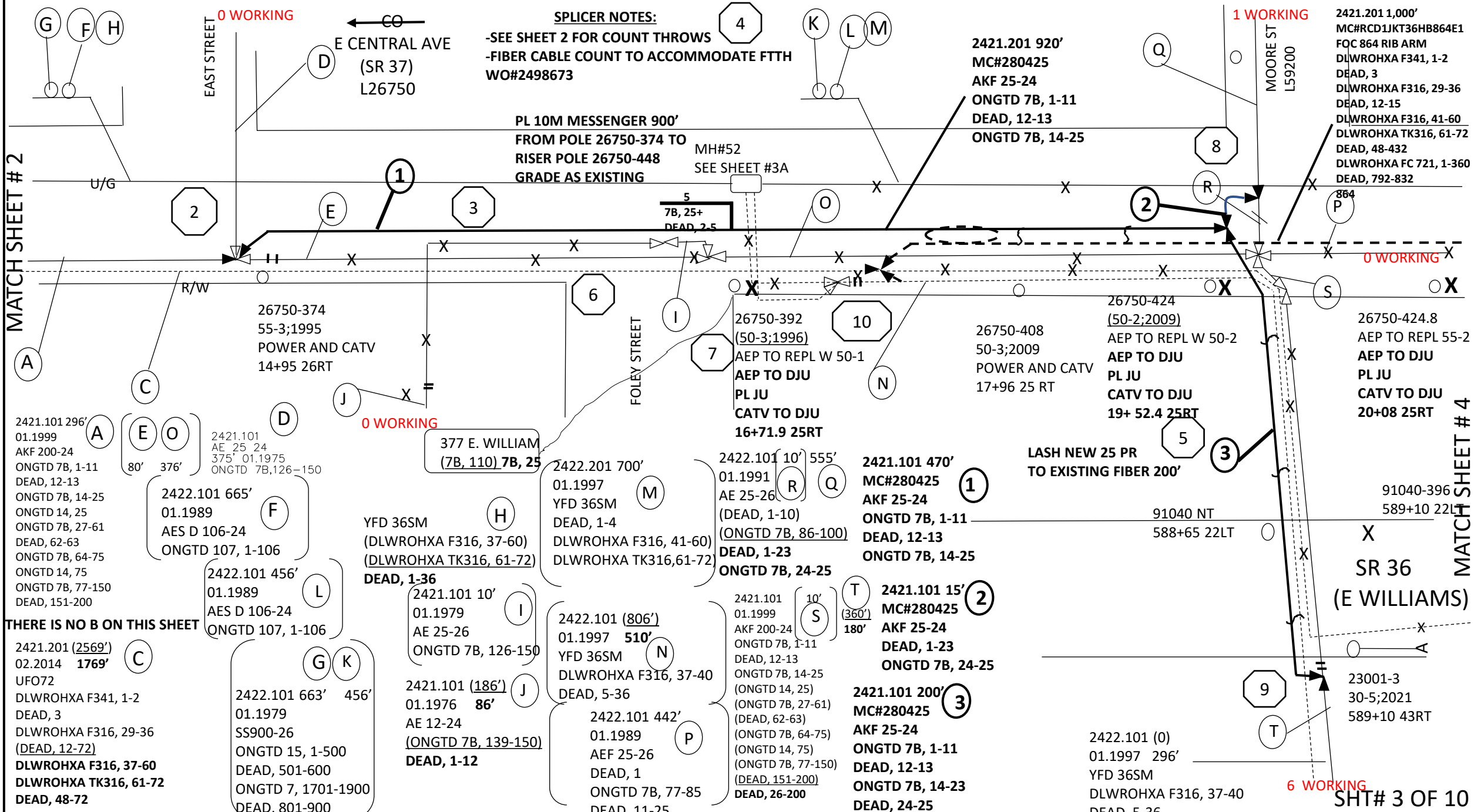
1	GRADE	NPANXX	LN#	CBL OFC	CABLE	PAIR#	STS	THROW TO	LEN	TERM OFC	TERMINAL	ST #	DIR	STREET	ST	ST SUB	LAST NAME	FIRST NAME
2	B1	740369	3649	ONGTD	7B	7	I		3301083	ONGTD	INSIDEODOT	400	E	WILLIAM	ST		STATE OF OHIO O	DOT DIST 6
3	B1	740363	127	ONGTD	7B	28	I	7B, 1	16010111	ONGTD	INSIDEODOT	400	E	WILLIAM	ST		STATE OF OHIO -	ODOT DIST 6
4	B1	740363	487	ONGTD	7B	34	I	7B, 2	4208086	ONGTD	INSIDEODOT	400	E	WILLIAM	ST		STATE OF OHIO -	ODOT DIST 6
5																		
6	B1	740363	5314	ONGTD	7B	52	I	7B, 3	4210084	ONGTD	INSIDEODOT	400	E	WILLIAM	ST		STATE OF OHIO -	ODOT DIST 6
7	CLECR	740363	7391	ONGTD	7B	89	I	7B, 24	4214020	ONGTD	59200P37	40		MOORE	ST		***LUSBY	RICHARD L
8	B1	740363	1961	ONGTD	7B	96	I	7B, 4	2314005	ONGTD	INSIDEODOT	400	E	WILLIAM	ST		STATE OF OHIO -	ODOT DIST 6
9																		
10	CBHSI	740362	9663	ONGTD	7B	114	I	7B, 25		ONGTD	26750P392S2	377	E	WILLIAM	ST		***STATE FARM	
11																		

2 of 10

REVISIONS		
Frontier COMMUNICATIONS		
DELAWARE -36-11.03		
PROJECT NUMBER:	2469701	CO AREA: MEDINA EXCHANGE CODE:
DRAWN DATE:	4/10/20	ENG: BRAD SNYDER
SCALE:	NIS	TAX DISTRICT: 0
TWP:	RANGE:	COUNTY: CITY OF MENINA
		SEC:

MATCH SHEET # 2

MATCH SHEET # 4



THERE IS NO B ON THIS SHEET

SPLICER NOTES:
 -SEE SHEET 2 FOR COUNT THROWS
 -FIBER CABLE COUNT TO ACCOMMODATE FTTH
 WO#2498673

PL 10M MESSENGER 900'
 FROM POLE 26750-374 TO
 RISER POLE 26750-448
 GRADE AS EXISTING

2421.201 1,000'
 MC#RCD1JKT36HB864E1
 FQC 864 RIB ARM
 DLWROHXA F341, 1-2
 DEAD, 3
 DLWROHXA F316, 29-36
 DEAD, 12-15
 DLWROHXA F316, 41-60
 DEAD, 48-432
 DLWROHXA TK316, 61-72
 DEAD, 792-832

2421.101 296'
 01.1999
 AKF 200-24
 ONGTD 7B, 1-11
 DEAD, 12-13
 ONGTD 7B, 14-25
 ONGTD 14, 25
 ONGTD 7B, 27-61
 DEAD, 62-63
 ONGTD 7B, 64-75
 ONGTD 14, 75
 ONGTD 7B, 77-150
 DEAD, 151-200

2421.101
 AE 25-24
 375' 01.1975
 ONGTD 7B, 126-150

2422.101 665'
 01.1989
 AES D 106-24
 ONGTD 107, 1-106

2422.101 700'
 01.1997
 YFD 36SM
 DEAD, 1-4
 DLWROHXA F316, 41-60)
 DLWROHXA TK316, 61-72)

2422.101 10' 555'
 01.1991
 AE 25-26
 (DEAD, 1-10)
 (ONGTD 7B, 86-100)
 DEAD, 1-23
 ONGTD 7B, 24-25

2421.101 470'
 MC#280425
 AKF 25-24
 ONGTD 7B, 1-11
 DEAD, 12-13
 ONGTD 7B, 14-25

2421.101 15'
 MC#280425
 AKF 25-24
 DEAD, 1-23
 ONGTD 7B, 24-25

2421.101 200'
 MC#280425
 AKF 25-24
 ONGTD 7B, 1-11
 DEAD, 12-13
 ONGTD 7B, 14-23
 DEAD, 24-25

2422.101 (0)
 01.1997 296'
 YFD 36SM
 DLWROHXA F316, 37-40
 DEAD, 5-36

2421.201 (2569')
 02.2014 1769'
 UFO72
 DLWROHXA F341, 1-2
 DEAD, 3
 DLWROHXA F316, 29-36
 (DEAD, 12-72)
 DLWROHXA F316, 37-60
 DLWROHXA TK316, 61-72
 DEAD, 48-72

2422.101 663' 456'
 01.1979
 SS900-26
 ONGTD 15, 1-500
 DEAD, 501-600
 ONGTD 7, 1701-1900
 DEAD, 801-900

2421.101 10'
 01.1979
 AE 25-26
 ONGTD 7B, 126-150

2422.101 (806')
 01.1997 510'
 YFD 36SM
 DLWROHXA F316, 37-40
 DEAD, 5-36

2421.101
 01.1999
 AKF 200-24
 ONGTD 7B, 1-11
 DEAD, 12-13
 ONGTD 7B, 14-25
 (ONGTD 14, 25)
 (ONGTD 7B, 27-61)
 (DEAD, 62-63)
 (ONGTD 7B, 64-75)
 (ONGTD 14, 75)
 (ONGTD 7B, 77-150)
 (DEAD, 151-200)
 DEAD, 26-200

2422.101 442'
 01.1989
 AEF 25-26
 DEAD, 1
 ONGTD 7B, 77-85
 DEAD, 11-25

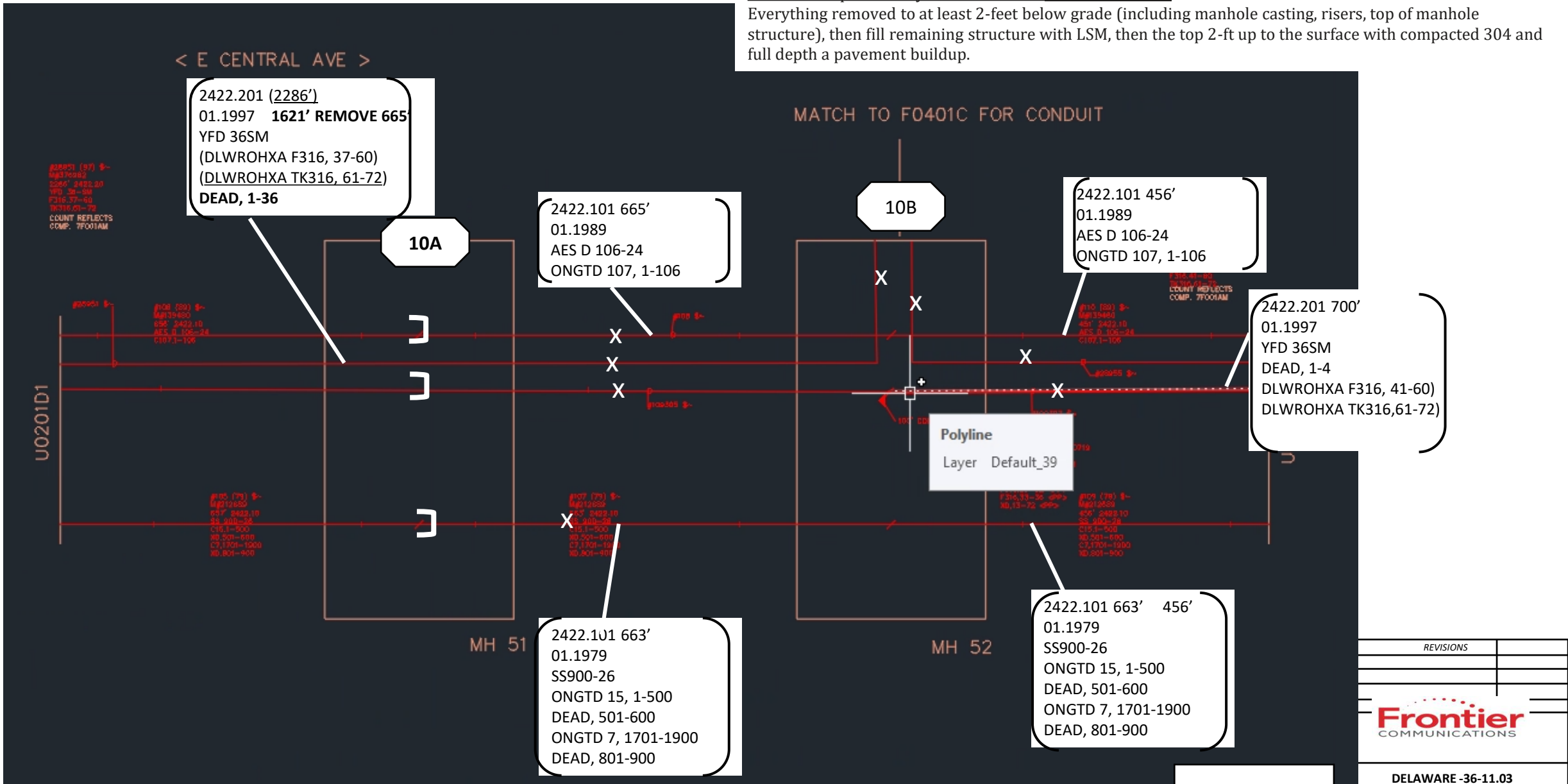
2422.101 10' 555'
 01.1991
 AE 25-26
 (DEAD, 1-10)
 (ONGTD 7B, 86-100)
 DEAD, 1-23
 ONGTD 7B, 24-25

2421.101 15'
 MC#280425
 AKF 25-24
 DEAD, 1-23
 ONGTD 7B, 24-25

23001-3
 30-5;2021
 589+10 43RT

Instructions per the City of Delaware for MH #52 and #53.

Everything removed to at least 2-feet below grade (including manhole casting, risers, top of manhole structure), then fill remaining structure with LSM, then the top 2-ft up to the surface with compacted 304 and full depth a pavement buildup.



REVISIONS



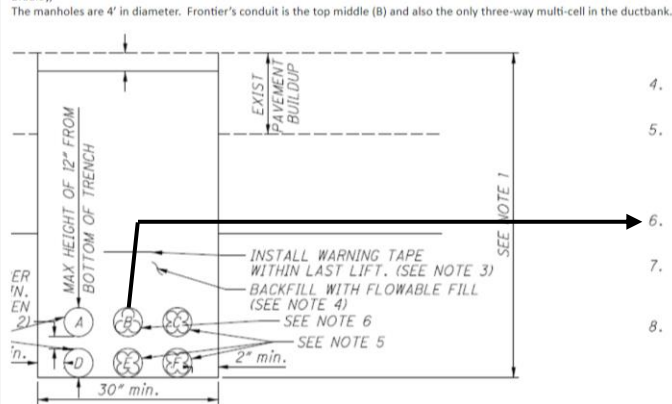
DELAWARE -36-11.03

PROJECT NUMBER: 2469701	CO AREA: MEDINA	EXCHANGE CODE:
DRAWN DATE: 4/10/20	ENG: BRAD SNYDER	COUNTY: CITY OF MENINA
SCALE: NTS	TAX DISTRICT:	
TWP:	RANGE:	SEC:

3A of 10

CONSTRUCTION NOTES:

-CITY OF DELAWARE IS DOING A SHARED CONDUIT SYSTEM UNDER THE RAILROAD TRACKS. EACH ENTITY IS PROVIDED A 4" CONDUIT.
 -CITY OF DELAWARE TO PROVIDE FRONTIER WITH 3-1.5" SUBDUCTS IN A 4" PVC FROM 4'x4' PULLBOX TO PULLBOX. (SEE NOTE 6)
 FRONTIER TO EXTEND THE 4" CONDUIT FROM EACH PULL BOX TO THE RISERS.



4. BACKFILL SHALL CONFORM TO ITEM 625 - TRENCHING OVER PAVED AREA, AS PER PLAN.
5. ONE, FOUR-WAY MULTI-CELL CONDUIT SHALL BE DEDICATED TO EACH OF THE FOLLOWING TELECOMMUNICATIONS ENTITIES:
 -CONSOLIDATED COOPERATIVE / CITY OF DELAWARE (C)
 -EVERSTREAM (E)
 -VERIZON COMMUNICATIONS (F)
6. ONE, THREE-WAY MULTI-CELL CONDUIT WILL BE DEDICATED TO THE FOLLOWING TELECOMMUNICATIONS ENTITY:
 -FRONTIER COMMUNICATIONS (B)
7. ONE 4" CONDUIT WILL BE DEDICATED TO THE FOLLOWING TELECOMMUNICATIONS ENTITIES:
 -SPECTRUM (A)
 -WIDE OPEN WEST (D)
8. CLEAN CONDUIT RUNS AFTER INSTALLATION BY PULLING A STIFF WIRE BRUSH (OR APPROVED EQUIVALENT CLEANING APPURTENANCE), THE SIZE OF THE CONDUIT, THROUGH THE CONDUIT. THEN TEST THE CONDUIT (AND INNER CELLS) BY PULLING A BALL MANDREL THAT HAS A DIAMETER OF AT LEAST 85% OF THE INSIDE DIAMETER OF THE CONDUIT, THROUGH EACH CONDUIT RUN. WHERE THE MANDREL FAILS TO PASS, EITHER CLEAN THE CONDUIT WITHOUT INJURY TO THE CONDUIT WALLS OR REPLACE THE CONDUIT. CLEANING AND TESTING ARE INCIDENTAL TO THE CONDUIT AND WILL NOT BE PAID FOR SEPARATELY.

UL SECTION - STA 592+75.05 TO STA 596+47.00

Chris Campbell, PE, Vice President / Cooling Telecommunications Manager

FOC 864 RIB ARM
 DLWROHXA F341, 1-2
 DEAD, 3
 DLWROHXA F316, 29-36
 DEAD, 12-15
 DLWROHXA F316, 41-60
 DLWROHXA TK316, 61-72
 DEAD, 48-864

E CENTRAL AVE
 (SR 37)
 L26750

(AEF 25-26)
 DEAD, 1
 ONGTD 7B, 77-85
 DEAD, 11-25

MATCH SHEET # 3

MATCH SHEET # 5

SR 36

SS900-26
 ONGTD 15, 1-500
 DEAD, 501-600
 ONGTD 7, 1701-1900
 DEAD, 801-900

AES D 106-24 456'
 ONGTD 107, 1-106

YFD 36SM
 (DEAD, 1-4)
 (DLWROHXA F316, 41-60)
 (DLWROHXA TK316-61-72)

2421.201 (0')
 02.2014 800'
 UFO72
 DLWROHXA F341, 1-2
 DEAD, 3
 DLWROHXA F316, 29-36
 DEAD, 12-72

Count: DLWROHXA F341,1-2+
 XD,3+
 DLWROHXA F316,29-32+
 DLWROHXA F316,33-36+
 XD,12-72
 Facility Type: FO
 Size: 72
 Length: 700
 Month & Year: 02.2014
 Placement: Aerial

2422.201 500'
 MC#RCD1JKT36HB864E1
 FOC 864 RIB ARM
 DLWROHXA F341, 1-2
 DEAD, 3
 DLWROHXA F316, 29-36
 DEAD, 12-15
 DLWROHXA F316, 41-60
 DLWROHXA TK316, 61-72
 DEAD, 48-432
 DLWROHXA FC 721, 1-360
 DEAD, 792-832

91040-496
 30-5;1975
 REQ CATV TO DJU
 595+05 30RT
 TBRL

(26750-432)
 (50-3;2009)
 (POWER AND CATV TO DJU)

26750-432
 AEP TO PL 40-4
 PL JU
 31+96.3 29.9RT

200' LOOP

END OF CONDUIT
 592+75 24.2LT

372' FROM
 PULLBOX TO
 PULLBOX

REVISIONS		
Frontier COMMUNICATIONS		
DELAWARE -36-11.03		
PROJECT NUMBER: 2469701	CO AREA: MENINA	EXCHANGE CODE:
DRAWN DATE: 4/10/20	ENG: BRAD SNYDER	COUNTY: CITY OF MENINA
SCALE: NTS	TAX DISTRICT:	
TWP:	RANGE:	SEC:

4 of 10

2421.101 94'
01.1988
AE 200-24
ONGTD 7, 1701-1900

2421.101 123'
01.1973
AE 100-24
ONGTD 15, 201-250
ONGTD 15, 151-200

25400 DLWROHXA
GELCOR ST 16
ONGTD 7, 1786-1789
DEAD, 5-16
ONGTD 7, 1786-1789
DEAD, 5-16

2421.101 (242)
01.1977 192'
AE 25-24
(ONGTD 7, 1701-1725)
DEAD, 1-25

ALL REMOVALS
15

UFO72 300'
DLWROHXA, 341, 1-2
DEAD, 3
DLWROHXA F316, 29-36
DEAD, 12-72

AE 400-24
ONGTD 15, 101-150
DEAD, 51-75
ONGTD 15, 401-425
ONGTD 15, 1-100
DEAD, 201-250
ONGTD 15, 251-280
DEAD, 281-300
ONGTD 15, 301-311
DEAD, 312-321
ONGTD 15, 322-400
DEAD, 1-200
ON521 107A, 1601-1625
DEAD, 226-400

UFO72 (1236')
DLWROHXA F341, 1-2
DEAD, 3 1096' REM 140'
DLWROHXA F316, 29-36
DEAD, 12-72

2421.101 (786')
01.1993 646' REM 140'
AKF 100-24
(DEAD, 1-30)
(ONGTD 15, 281-300)
(DEAD, 51-60)
(ONGTD 15, 311-321)
(DEAD, 72-79)
(ONGTD 330-350)
DEAD, 1-100

2421.101 123 (751)
01.1973 611' REM 140'
AE 100-24
(ONGTD 15, 201-250)
(ONGTD 15, 151-200)
ON521 107A, 1601-1700

HDSL 4
ONGTD 7, 1891-1892
DEAD, 3-4
ONGTD 7, 1891-1892
DEAD, 3-4

25400-501
AEP TO REPL W 45-4
PL JU
596+65 75LT

25400-531
599+40 113LT
PL JU

CUT CABLE DEAD
TIE STRANDS TOGETHER
0 WORKING

25400-527
AEP TO REPL W 45-3
PL JU

25400-534
599+90 135LT
DND

25400-520 (598+80 85LT)
AEP TO REPL W 55-3
PL JU
597+97.6 52LT

25400-528
30-5
599+00 135LT

E CENTRAL AVE
(SR 37)
(SR 36)
L91040

ALL SPlicing

END OF CONDUIT
596+47 65LT

MANHOLE #53 TO BE
ABANDONED AND FILLED WITH

(MH 53)
ASEE SHT #3A

0 WORKING
91040-508
(30-5;1968)
(598+25 60RT)
35-4
598+20 60RT
CATV TO TFR

2421.101 287'
01.1989
AES D 106-24
ONGTD 107, 1-106

2421.101 308'
01.1993
AKF 100-24
DEAD, 1-30
ONGTD 15, 281-300
DEAD, 51-60
ONGTD 15, 311-321
DEAD, 72-79
ONGTD 330-350

2421.201 550'
MC#RCD1JKT36HB864E1
FOC 864 RIB ARM
DLWROHXA F341, 1-2
DEAD, 3
DLWROHXA F316, 29-36
DEAD, 12-15
DLWROHXA F316, 41-60
DLWROHXA TK316, 61-72
DEAD, 48-432
DLWROHXA FC 721, 1-360
DEAD, 792-832

91040 DLWROHXA
UNIVERSAL 8
ONGTD 15, 139
DEAD, 2
ONGTD 15, 407-408
ONGTD 15, 406
ONGTD 15, 410
DEAD, 7-8
ONGTD 15, 139
DEAD, 2
ONGTD 15, 407-408
ONGTD 15, 406
ONGTD 15, 410
DEAD, 7-8

2421.101 495'
01.1973
AE 25-22
DEAD, 1-25
AE 50-22
(ONGTD 15, 451-500)
ON521 107A, 1626-1650
DEAD, 26-50

2421.101 15'
01.2003
AKF 50-24
(ONGTD 14, 401-425)
ON521 107A, 1626-1650
DEAD, 26-50

SS900-26
ONGTD 15, 1-500
DEAD, 501-600
ONGTD 7, 1701-1900
DEAD, 801-900

2422.101 145'
01.1979
SS900-26
ONGTD 15, 1-500
DEAD, 501-600
ONGTD 7, 1701-1900
DEAD, 801-900

2421.101 137'
01.1979
AE 400-24
ONGTD 15, 101-150
DEAD, 51-100
ONGTD 15, 1-100
DEAD, 201-250
ONGTD 15, 251-280
DEAD, 281-300
ONGTD 15, 301-311
DEAD, 312-321
ONGTD 15, 322-400

2421.101 150'
MC#280450
AKF 50-24
ON521 107A, 1651-1700
2421.101 180'
MC#280450
AKF 50-24
ON521 107A, 1601-1650

2421.101 (712')
01.1989 572' REM 140'
AES D 106-24
(ONGTD 107, 1-106)
DEAD, 1-106

2421.101 94'
01.1989
AE 400-26
ONGTD 7, 1701-1900
ONGTD 15, 201-250
ONGTD 15, 151-200
DEAD, 301-400
20 DLWROHXA
50 UNIT HSG 106
ONGTD 107, 1-106
ONGTD 107, 1-106

AE 25-26
(ONGTD 7, 1776-1785)
(DEAD, 1-14)
(ONGTD 7, 1790-1800)
ON521 107A, 1676-1688
DEAD, 14-25

2421.101 801'
01.1974
AE 25-22
(ONGTD 15, 426-450)
ON521. 1626-1650

YFD 36SM
DEAD, 1-4
DLWROHXA F316, 41-60
DLWROHXA TK316-61-72

YFD 36SM (1430')
DEAD, 1-4 1055'
DLWROHXA F316, 41-60
DLWROHXA TK316-61-72

2421.101 304'
01.1973
AE 100-25
ONGTD 15, 401-500

AE 100-25
(ONGTD 15, 401-500)
DEAD, 1-50
ON521 107A, 1626-1650

UFO72
DLWROHXA F341, 1-2
DEAD, 3
DLWROHXA F316, 29-36
DEAD, 12-72



BOWTOWN ROAD
BOWTOWN ROAD REMOTE
L25400

MATCH SHEET # 6

MATCH SHEET # 4

MATCH SHEET # 10

ALL PLACEMENTS

NO CONTACT

NT

25-5;70

602+50

DND

NT

NT

NT

NT

NT

NT

NT

NT

NT

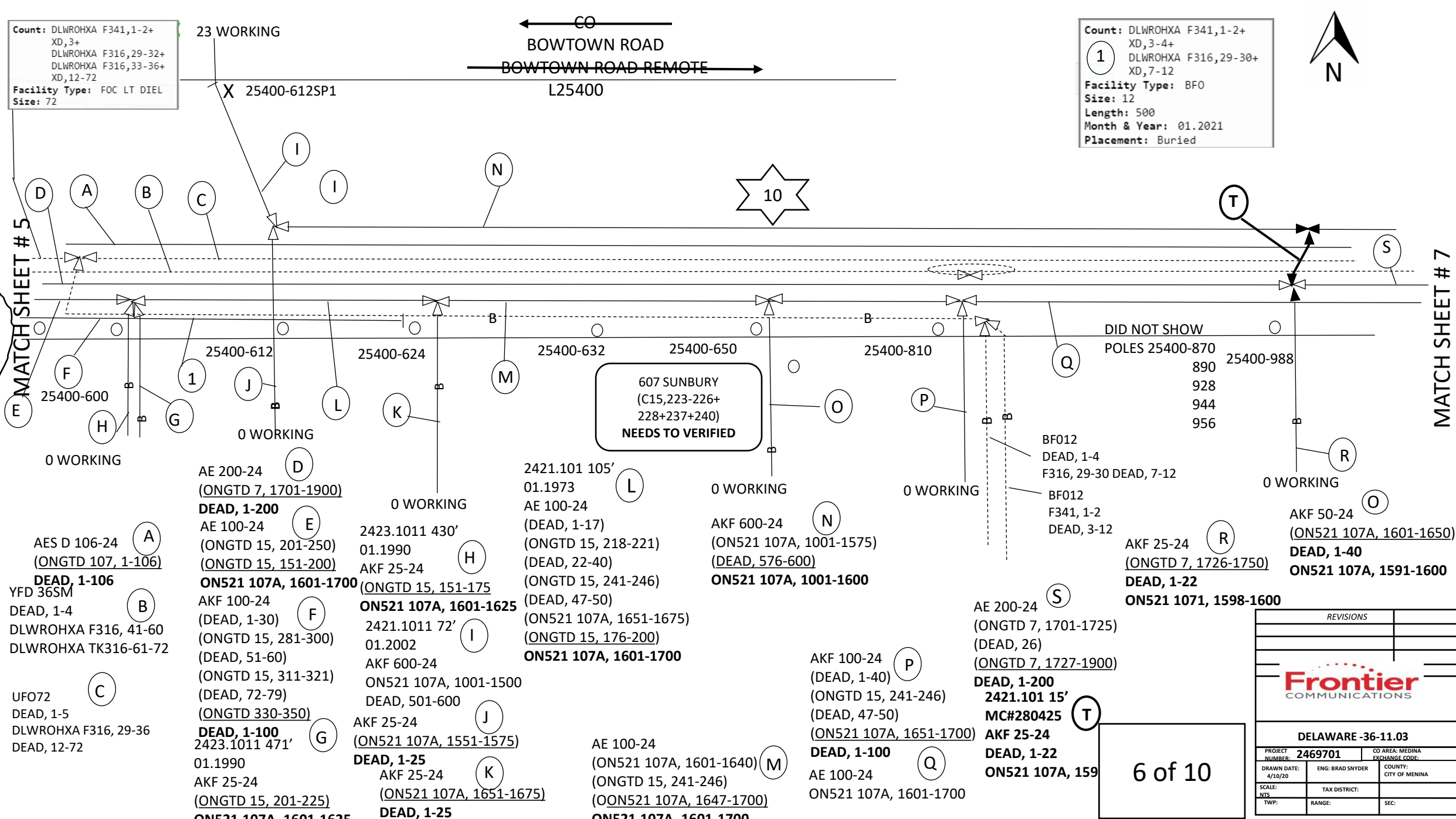
SHT# 5 OF 10

Count: DLWROHXA F341,1-2+
 XD,3+
 DLWROHXA F316,29-32+
 DLWROHXA F316,33-36+
 XD,12-72
 Facility Type: FOC LT DIEL
 Size: 72

Count: DLWROHXA F341,1-2+
 XD,3-4+
 DLWROHXA F316,29-30+
 XD,7-12
 Facility Type: BFO
 Size: 12
 Length: 500
 Month & Year: 01.2021
 Placement: Buried



← CO
 BOWTOWN ROAD
 BOWTOWN ROAD REMOTE
 L25400
 →



MATCH SHEET # 5

MATCH SHEET # 7

607 SUNBURY
 (C15,223-226+
 228+237+240)
 NEEDS TO VERIFIED

DID NOT SHOW
 POLES 25400-870
 890 25400-988
 928
 944
 956

6 of 10

AES D 106-24 (A)
 (ONGTD 107, 1-106)
 DEAD, 1-106

YFD 36SM (B)
 DEAD, 1-4
 DLWROHXA F316, 41-60
 DLWROHXA TK316-61-72

UFO72 (C)
 DEAD, 1-5
 DLWROHXA F316, 29-36
 DEAD, 12-72

AE 200-24 (D)
 (ONGTD 7, 1701-1900)
 DEAD, 1-200

AE 100-24 (E)
 (ONGTD 15, 201-250)
 (ONGTD 15, 151-200)

AKF 100-24 (F)
 (DEAD, 1-30)
 (ONGTD 15, 281-300)
 (DEAD, 51-60)
 (ONGTD 15, 311-321)
 (DEAD, 72-79)
 (ONGTD 330-350)

DEAD, 1-100 (G)
 2423.1011 471'

01.1990
 AKF 25-24
 (ONGTD 15, 201-225)
 ON521 107A, 1601-1625

2423.1011 430' (H)
 01.1990
 AKF 25-24
 (ONGTD 15, 151-175)
 ON521 107A, 1601-1625

2421.1011 72' (I)
 01.2002
 AKF 600-24
 ON521 107A, 1001-1500
 DEAD, 501-600

AKF 25-24 (J)
 (ON521 107A, 1551-1575)

DEAD, 1-25 (K)
 AKF 25-24
 (ON521 107A, 1651-1675)
 DEAD, 1-25

2421.101 105' (L)
 01.1973
 AE 100-24
 (DEAD, 1-17)
 (ONGTD 15, 218-221)
 (DEAD, 22-40)
 (ONGTD 15, 241-246)
 (DEAD, 47-50)
 (ON521 107A, 1651-1675)
 (ONGTD 15, 176-200)
 ON521 107A, 1601-1700

AE 100-24 (M)
 (ON521 107A, 1601-1640)
 (ONGTD 15, 241-246)
 (ON521 107A, 1647-1700)
 ON521 107A, 1601-1700

AKF 600-24 (N)
 (ON521 107A, 1001-1575)
 (DEAD, 576-600)
 ON521 107A, 1001-1600

AKF 100-24 (P)
 (DEAD, 1-40)
 (ONGTD 15, 241-246)
 (DEAD, 47-50)
 (ON521 107A, 1651-1700)

DEAD, 1-100 (Q)
 AE 100-24
 ON521 107A, 1601-1700

AE 200-24 (S)
 (ONGTD 7, 1701-1725)
 (DEAD, 26)
 (ONGTD 7, 1727-1900)

DEAD, 1-200 (T)
 2421.101 15'
 MC#280425
 AKF 25-24
 DEAD, 1-22
 ON521 107A, 159

BF012
 DEAD, 1-4
 F316, 29-30 DEAD, 7-12

BF012
 F341, 1-2
 DEAD, 3-12

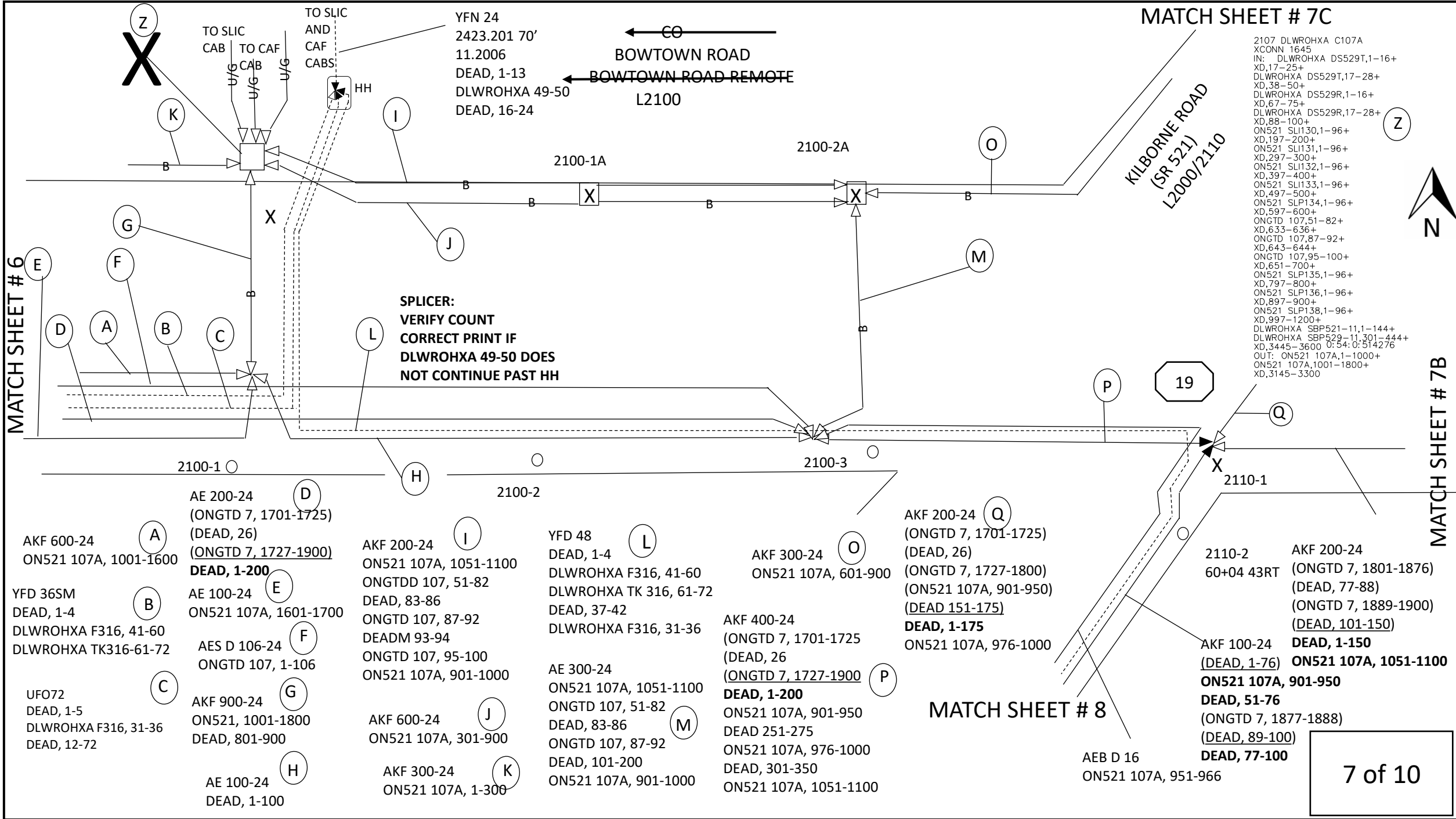
REVISIONS		
Frontier COMMUNICATIONS		
DELAWARE -36-11.03		
PROJECT NUMBER: 2469701	CO AREA: MEDINA	EXCHANGE CODE:
DRAWN DATE: 4/10/20	ENG: BRAD SNYDER	COUNTY: CITY OF MENINA
SCALE: NTS	TAX DISTRICT:	
TWP:	RANGE:	SEC:

2107 DLWROHXA C107A
 XCONN 1645
 IN: DLWROHXA DS529T,1-16+
 XD,17-25+
 DLWROHXA DS529T,17-28+
 XD,36-50+
 DLWROHXA DS529R,1-16+
 XD,67-75+
 DLWROHXA DS529R,17-28+
 XD,88-100+
 ON521 SLI130,1-96+
 XD,197-200+
 ON521 SLI131,1-96+
 XD,297-300+
 ON521 SLI132,1-96+
 XD,397-400+
 ON521 SLI133,1-96+
 XD,497-500+
 ON521 SLP134,1-96+
 XD,597-600+
 ONGTD 107,51-82+
 XD,633-636+
 ONGTD 107,87-92+
 XD,643-644+
 ONGTD 107,95-100+
 XD,651-700+
 ON521 SLP135,1-96+
 XD,797-800+
 ON521 SLP136,1-96+
 XD,897-900+
 ON521 SLP138,1-96+
 XD,997-1200+
 DLWROHXA SBP521-11,1-144+
 DLWROHXA SBP529-11,301-444+
 XD,3445-3600 0:54:0:514276
 OUT: ON521 107A,1-1000+
 ON521 107A,1001-1800+
 XD,3145-3300



MATCH SHEET # 6

MATCH SHEET # 7B



YFN 24
 2423.201 70'
 11.2006
 DEAD, 1-13
 DLWROHXA 49-50
 DEAD, 16-24

**SPLICER:
 VERIFY COUNT
 CORRECT PRINT IF
 DLWROHXA 49-50 DOES
 NOT CONTINUE PAST HH**

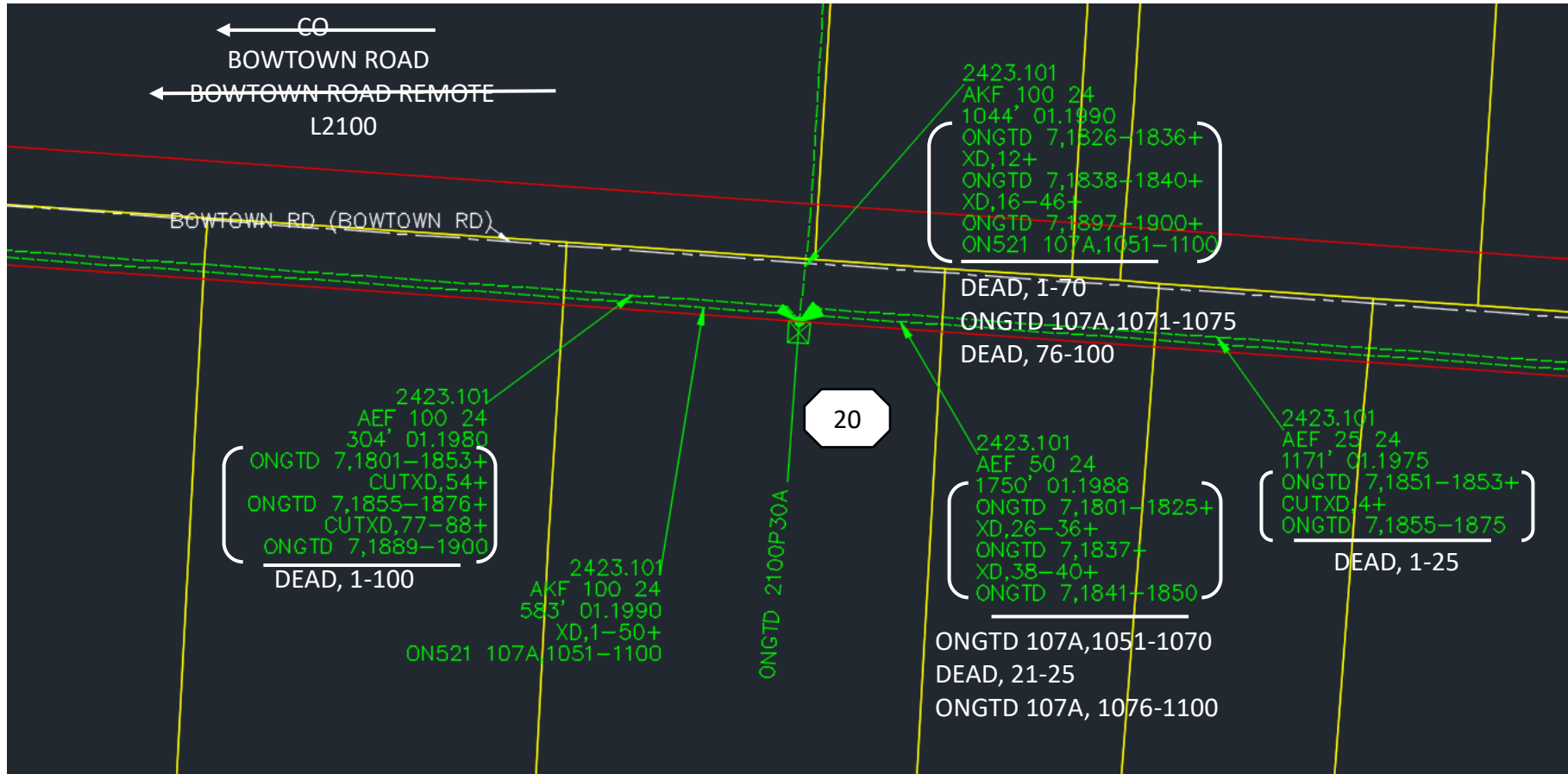
AKF 200-24 (Q)
 (ONGTD 7, 1701-1725)
 (DEAD, 26)
 (ONGTD 7, 1727-1800)
 (ON521 107A, 901-950)
 (DEAD 151-175)
DEAD, 1-175
 ON521 107A, 976-1000

2110-2
 60+04 43RT
 AKF 200-24 (ONGTD 7, 1801-1876)
 (DEAD, 77-88)
 (ONGTD 7, 1889-1900)
 (DEAD, 101-150)
DEAD, 1-150
 ON521 107A, 1051-1100
DEAD, 51-76
 (ONGTD 7, 1877-1888)
 (DEAD, 89-100)
DEAD, 77-100

MATCH SHEET # 8



MATCH SHEET # 7

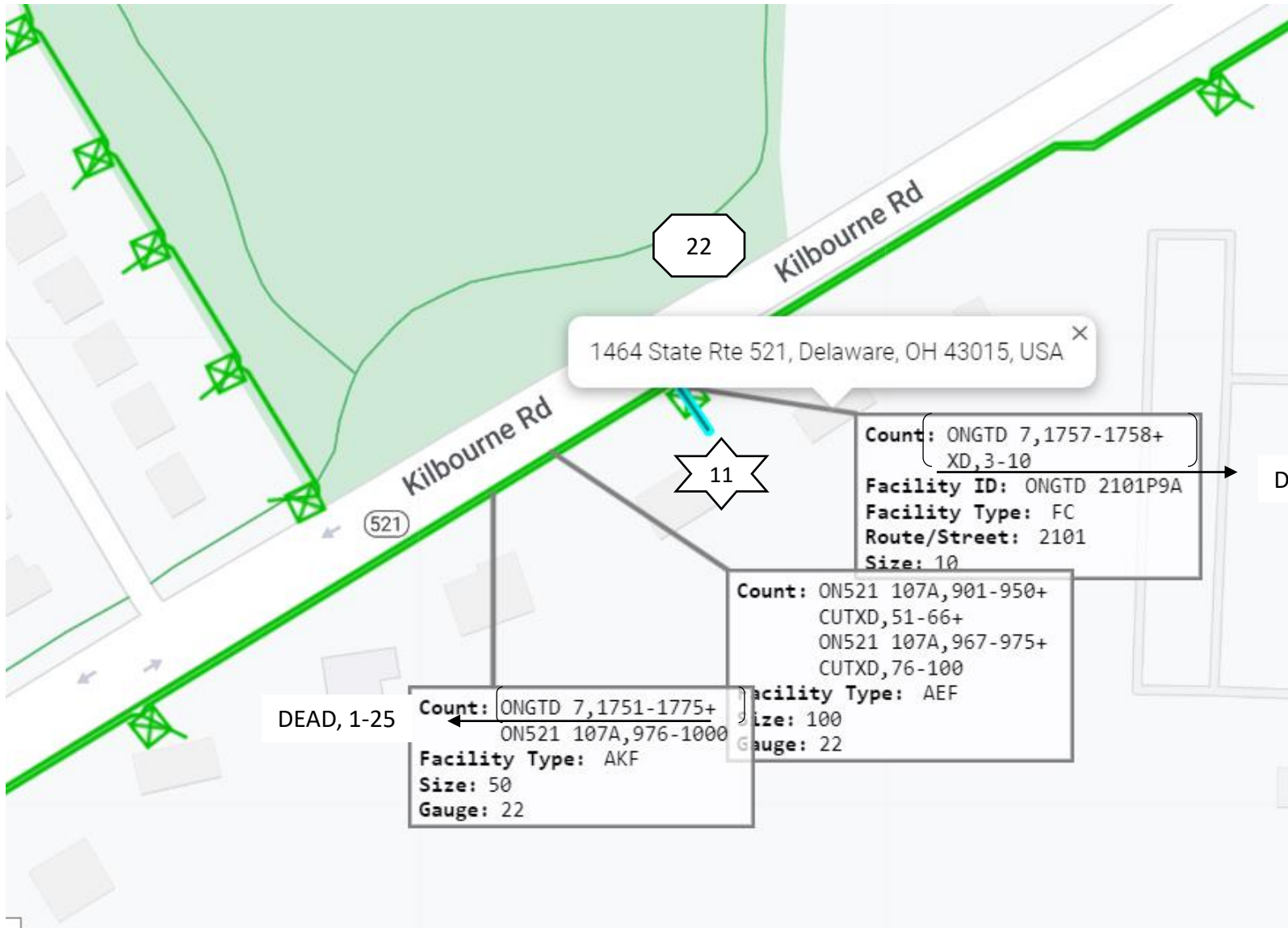


102	RHSI	740362	9428	ONGTD	7	1828	I	107A	1098*	4305103	ONGTD	2100P10A	1389	BOWTOWN	RD	PITTSNBARGER	LINDA
103	R1	740362	387	ONGTD	7	1844	I	107A	1069	2200107	ONGTD	2100P88A	3780	BOWTOWN	RD	HUMES	JOHN N
104	RHSI	740362	2239	ONGTD	7	1862	I	107A	1100*	2211037	ONGTD	2100P30A	2028	BOWTOWN	RD	WILLIAMSON	MELVIN
105	XB1	740363	2496	ONGTD	7	1871	I	107A	1099*	3307023	ONGTD	2100P14A	1509	BOWTOWN	RD	CALDWELL	MAX

21

7B of 10

REVISIONS		
Frontier COMMUNICATIONS		
DELAWARE -36-11.03		
PROJECT NUMBER:	2469701	CO AREA: MEDINA EXCHANGE CODE:
DRAWN DATE:	4/10/20	COUNTY: CITY OF MENINA
SCALE:	TAX DISTRICT:	
TWP:	RANGE:	SEC:



7C of 10

REVISIONS		
Frontier COMMUNICATIONS		
DELAWARE -36-11.03		
PROJECT NUMBER: 2469701	CO AREA: MEDINA EXCHANGE CODE:	
DRAWN DATE: 4/10/20	ENG: BRAD SNYDER	COUNTY: CITY OF MENINA
SCALE: NTS	TAX DISTRICT:	DWG 7C OF 10
TWP:	RANGE:	SEC:



MATCH SHEET # 7

CO
BOWTOWN ROAD
BOWTOWN ROAD REMOTE
L2110

2110-3
58+20 40RT
DND

2110-4
56+40 40RT
TBRL

2110-5
54+45 50RT
TBRL

2110-6
52+62 38RT
TBRL

Count: ON521 107A,951-966
Facility Type: AEB D
Size: 16
Length: 412
Month & Year: 12.2008
Placement: Buried

23

MATCH SHEET # 9

AEB D 16
ON521 107A, 951-966

YFD 48
DEAD, 1-4
DLWROHXA F316, 41-60
DLWROHXA TK 316, 61-72
DEAD, 37-42
DLWROHXA F316, 31-36

AKF 100-24
(DEAD, 1-76)
ON521 107A, 901-950
DEAD, 51-76
(ONGTD 7, 1877-1888)
(DEAD, 89-100)
DEAD, 77-100

8 of 10

REVISIONS		
Frontier COMMUNICATIONS		
DELAWARE -36-11.03		
PROJECT NUMBER:	2469701	CO AREA: MEDINA EXCHANGE CODE:
DRAWN DATE:	4/10/20	ENG: BRAD SNYDER COUNTY: CITY OF MENINA
SCALE:	NIS	TAX DISTRICT:
TWP:	RANGE:	SEC:

MATCH SHEET # 8

1 WORKING (CIRCUIT)
ONGTD 7, 1877

AE 400-24
ONGTD 15, 1-150
DEAD, 151-175
ONGTD 15, 401-425
DEAD, 201-250
ONGTD 15, 251-275
DEAD, 276-400
ON521 107A, 901-921
DEAD, 23-200

2421.101 175'
01.1979
AE 400-24
ONGTD 15, 1-150
DEAD, 151-175
ONGTD 15, 401-425
DEAD, 201-250
ONGTD 15, 251-275
DEAD, 276-400
ON521 107A, 901-925
DEAD, 26-200

2423.101 347'
12.2008
AKF 200-24
(ONGTD 15, 1-150)
(ON521 107A, 951-966)
(DEAD, 167-175)
(ONGTD 15, 401-425)
DEAD, 1-200

2423.101 75'
MC#280425
AKF 25-25
ON521 107A, 901-925

BOWTOWN REMOTE
KILBORNE ROAD
(SR 521)
L2110

E CENTRAL AVE
(SR 37)
(SR 36)
L91040

(2000-4F1)
(620+20 122LT)
2000-4F1
AEP TO RELOC W 55-1
TFR ATT (2)
620+26 102LT

DIRECTIONAL BORE 25'
PL 48" DEEP

(2000-2AS1A)
(620+45 80LT)
2000-2AS1A

2000-5

MATCH SHEET # 10

MATCH SHEET # 9A

91040-600
35-5;1989
614+85 70RT

91040-608
35-5;1979
616+80 80RT

91040-616
618+50 82RT

AKF 100-24
(DEAD, 1-76)
ON521 107A, 926-950
DEAD, 51-76
(ONGTD 7, 1877-1888)
(DEAD, 89-100)
DEAD, 77-100

2000-2A
620+75 90RT
DND

C15, 1-150 (6)
C15, 401-425 (3)
C107A, 951-966 (2)

0 WORKING

2421.101 246'
01.2001
AKF 25-22
(ONGTD 15, 251-275)
DEAD, 1-21
ON521 107A, 922-925

2423.101 306'
12.2008
AKF 200-24
(ONGTD 15, 1-150)
(DEAD, 151-175)
(ONGTD 15, 401-425)
ON521 107A, 901-925
DEAD, 26-200

2423.101 270'
12.2008
AEB28-24
(ON521 107A, 951-966)
(DEAD, 17-28)
ON521 107A, 901-925
DEAD, 26-28

AKF 100-24
(DEAD, 1-76)
ON521 107A, 901-950
DEAD, 51-76
(ONGTD 7, 1877-1888)
(DEAD, 89-100)
DEAD, 77-100

YFD 48
DEAD, 1-4
DLWROHXA F316, 41-60
DLWROHXA TK 316, 61-72
DEAD, 37-42
DLWROHXA F316, 31-36

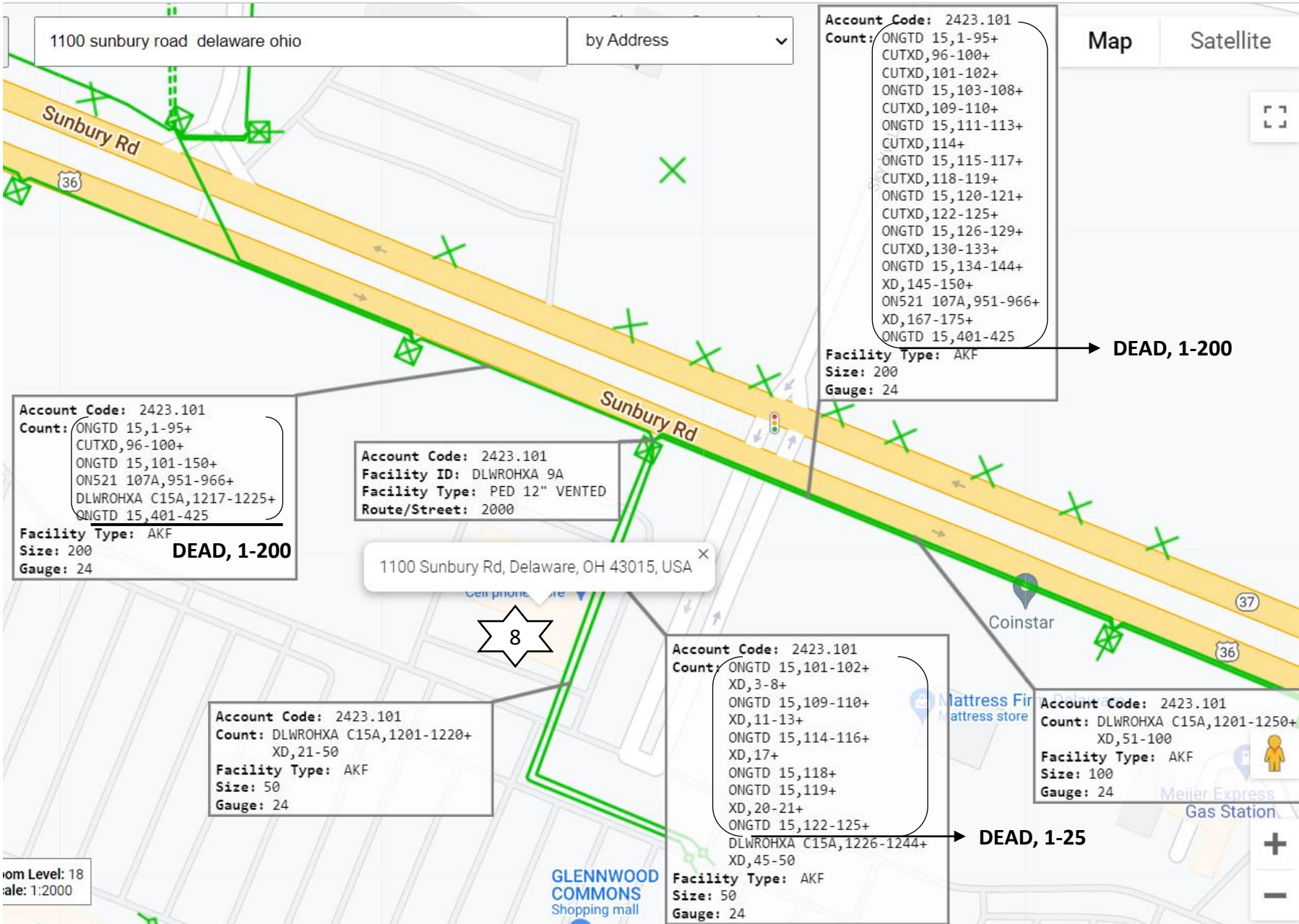
2423.101 236'
12.2001
AKF 50-24
(DEAD, 1)
(ONGTD 7, 1877-1888)
(DEAD, 14-50)
DEAD, 1-25
ON521 107A, 926-950

9 of 10

REVISIONS		
Frontier COMMUNICATIONS		
DELAWARE -36-11.03		
PROJECT NUMBER: 2469701	CO AREA: MEDINA EXCHANGE CODE:	
DRAWN DATE: 4/10/20	ENG: BRAD SNYDER	COUNTY: CITY OF MEDINA
SCALE: N/S	TAX DISTRICT:	
TWP:	RANGE:	SEC:

MATCH SHEET # 9

MATCH SHEET # 9B



9A of 10

REVISIONS		
Frontier COMMUNICATIONS		
DELAWARE -36-11.03		
PROJECT NUMBER: 2469701	CO AREA: MEDINA EXCHANGE CODE:	
DRAWN DATE: 4/10/20	ENG: BRAD SNYDER	COUNTY: CITY OF MEDINA
SCALE: NTS	TAX DISTRICT:	
TWP:	RANGE:	SEC:

MATCH SHEET # 9A

MATCH SHEET # 9C

MATCH SHEET # 9D

Count: ONGTD 15,1-95+
 CUTXD,96-100+
 CUTXD,101-102+
 ONGTD 15,103-105+
 CUTXD,106+
 ONGTD 15,107-108+
 CUTXD,109-110+
 ONGTD 15,111-113+
 CUTXD,114+
 ONGTD 15,115-117+
 CUTXD,118-119+
 ONGTD 15,120-121+
 CUTXD,122-125+
 ONGTD 15,126-129+
 CUTXD,130-133+
 ONGTD 15,134-144+
 XD,145-150+
 ON521 107A,951-966+
 XD,167-175+
 ONGTD 15,401-425

Account Code: 2423.101
 Count: CUTXD,101-102+
 ONGTD 15,103-105+
 CUTXD,6+
 ONGTD 15,107-108+
 CUTXD,9-10+
 ONGTD 15,111-113+
 CUTXD,114+
 ONGTD 15,115-117+
 CUTXD,118-119+
 ONGTD 15,120-121+
 CUTXD,122-125+
 ONGTD 15,126-129+
 CUTXD,130-133+
 ONGTD 15,134-144+
 XD,45-50+
 ON521 107A,951-953+
 CUTXD,54+
 ON521 107A,955-957+
 CUTXD,58+
 ON521 107A,959-962+
 CUTXD,63+
 ON521 107A,964-966+
 XD,67-75+
 ONGTD 15,51-55+
 ONGTD 15,406+
 CUTXD,82+
 ONGTD 15,409+
 XD,84+
 ONGTD 15,410-419+
 CUTXD,95+
 ONGTD 15,421-424+
 CUTXD,100

Count: DLWROHXA C15A,1201-1250+
 XD,51-100+
 Facility Type: AKF Station
 Size: 100
 Gauge: 24

Account Code: 2423.101
 Count: ONGTD 15,1-50+
 XD,51-64+
 ONGTD 15,65+
 XD,66-69+
 ONGTD 15,70-75+
 ONGTD 15,76-95+
 CUTXD,96-100
 Facility Type: AKF
 Size: 100
 Gauge: 24

Account Code: 2423.101
 Count: ONGTD 15,401+
 XD,2-17+
 ONGTD 15,418-419+
 ONGTD 15,420+
 XD,21-24+
 ONGTD 15,425+
 XD,26-53+
 ON521 107A,954+
 XD,55-57+
 ON521 107A,958+
 XD,59-62+
 ON521 107A,963+
 XD,64-100+
 DLWROHXA C15A,1601-1800
 Facility Type: AKF
 Size: 300

Account Code: 2423.101
 Count: DLWROHXA C15A,1201-1800
 Facility Type: AKF
 Size: 600
 Gauge: 24

Facility Type: AKF
 Size: 200
 Gauge: 24
DEAD, 1-200

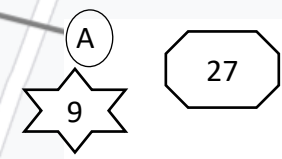
Facility Type: AKF
 Size: 100
 Gauge: 24
DEAD, 1-100

Facility Type: AKF
 Size: 100
 Gauge: 24
C15A, 1501-1600

Facility ID: ONGTD,2000P22A
 Route/Street: 2000

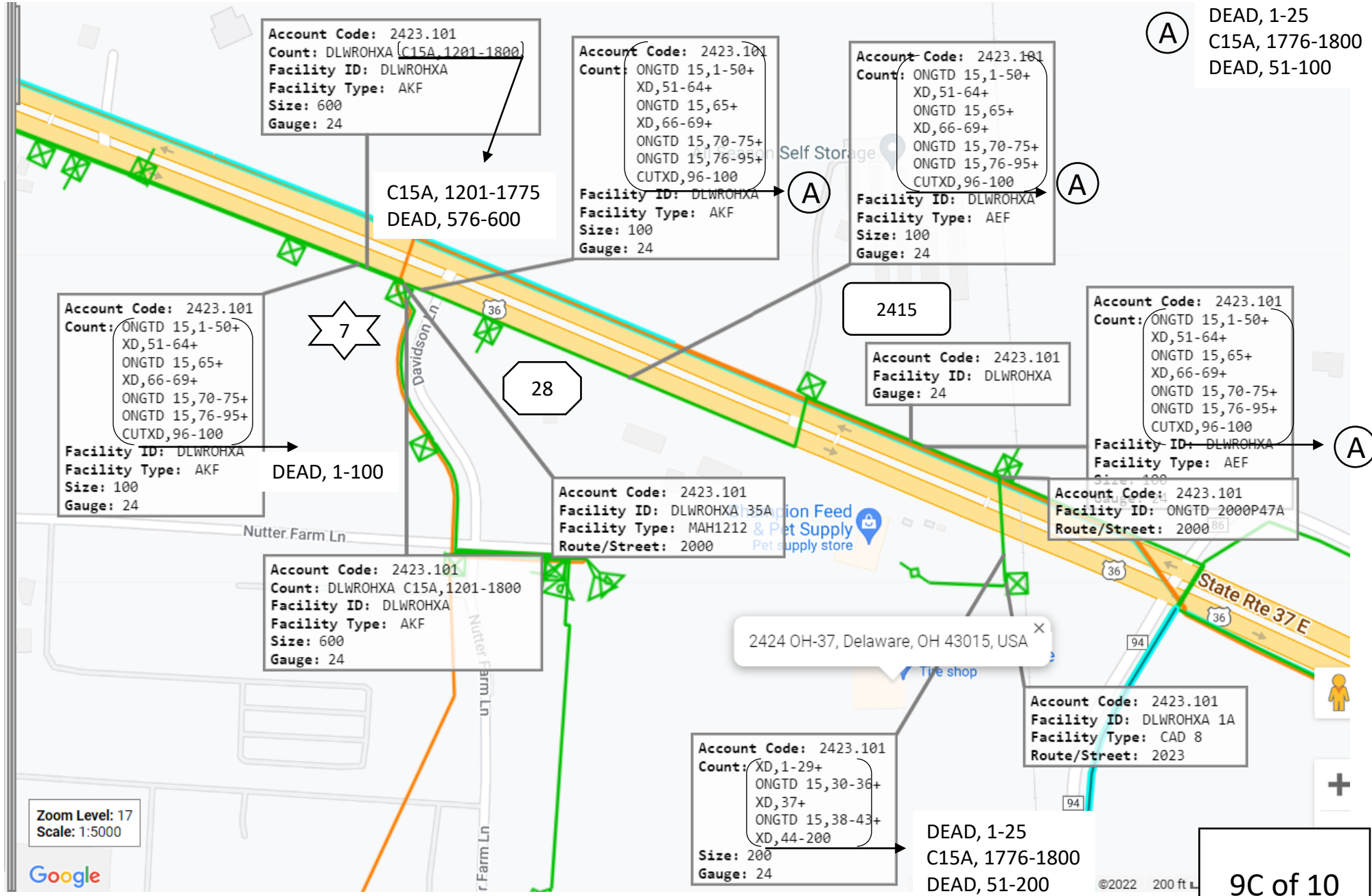
C15A, 1201-1775
DEAD, 576-600

From Level: 17
 Scale: 1:5000
DEAD, 1-100



REVISIONS		
Frontier COMMUNICATIONS		
DELAWARE -36-11.03		
PROJECT NUMBER: 2469701	CO AREA: MEDINA	EXCHANGE CODE:
DRAWN DATE: 4/10/20	ENG: BRAD SNYDER	COUNTY: CITY OF MEDINA
SCALE: NTS	TAX DISTRICT:	
TWP:	RANGE:	SEC:

9B of 10



(A) DEAD, 1-25
C15A, 1776-1800
DEAD, 51-100

Zoom Level: 17
Scale: 1:5000



REVISIONS		
Frontier COMMUNICATIONS		
DELAWARE -36-11.03		
PROJECT NUMBER: 2469701	CO AREA: MEDINA	EXCHANGE CODE:
DRAWN DATE: 4/10/20	ENG: BRAD SNYDER	COUNTY: CITY OF MEDINA
SCALE: NTS	TAX DISTRICT:	
TWP:	RANGE:	SEC:

9C of 10

©2022 200 ft

MATCH SHEET # 9B

Count: CUTXD,1-2+
 ONGTD 15,103-105+
 CUTXD,6+
 ONGTD 15,107-108+
 CUTXD,9-10+
 ONGTD 15,111-113+
 CUTXD,14+
 ONGTD 15,115-117+
 CUTXD,18+
 CUTXD,19+
 ONGTD 15,120-121+
 CUTXD,22-25+
 XD,26-50+
 ON521 107A,951-953+
 XD,54+
 ON521 107A,955-957+
 XD,58+
 ON521 107A,959-962+
 XD,81-84+
 ONGTD 15,410-419+
 XD,63-75+
 ONGTD 15,51-55+
 XD,95+
 ONGTD 15,421-424+
 XD,100

Facility Type: AKF
 Size: 100
 Gauge: 24

C15A, 1501-1600

Facility ID: ON521 2002P9A
 Route/Street: 2002



29

Count: CUTXD,1-16+
 ONGTD 15,117+
 CUTXD,18+
 CUTXD,19+
 ONGTD 15,120-121+
 CUTXD,22-25

Facility Type: AKF
 Size: 25
 Gauge: 22
C15A, 1501-1525

533

Count: XD,1-84+
 ONGTD 15,410-419+
 CUTXD,95+
 ONGTD 15,421-424+
 CUTXD,100

Facility Type: AKF
 Size: 100
 Gauge: 24

C15A, 1501-1575 DEAD, 76-100

Count: CUTXD,1-2+
 ONGTD 15,103-105+
 CUTXD,6+
 ONGTD 15,107-108+
 CUTXD,9-10+
 ONGTD 15,111-113+
 CUTXD,14+
 ONGTD 15,115-117+
 CUTXD,18+
 CUTXD,19+
 ONGTD 15,120-121+
 CUTXD,22-25

Facility Type: AKF
 Size: 25
 Gauge: 22

C15A, 1576-1600

Count: ONGTD 15,126-129+
 CUTXD,5+
 CUTXD,6-8+
 ONGTD 15,134-144+
 XD,20-25+
 ON521 107A,951-953+
 CUTXD,54+
 ON521 107A,955-957+
 CUTXD,58+
 ON521 107A,959-962+
 CUTXD,63+
 ON521 107A,964-966+
 ONGTD 15,51-55+
 ONGTD 15,406+
 CUTXD,82+
 ONGTD 15,409+
 XD,84

Facility Type: AKF
 Size: 50
 Gauge: 24
DEAD, 1-50

Facility ID: DLWROHXA 6
 Route/Street: 2124



Count: ONGTD 15,126-129+
 CUTXD,5+
 CUTXD,6-8+
 ONGTD 15,134-144+
 XD,20-25+
 ON521 107A,951-953+
 CUTXD,54+
 ON521 107A,955-957+
 CUTXD,58+
 ON521 107A,959-962+
 CUTXD,63+
 ON521 107A,964-966+
 ONGTD 15,51-55+
 ONGTD 15,406+
 CUTXD,82+
 ONGTD 15,409+
 XD,84+
 XD,51-184+
 ONGTD 15,410-419+
 CUTXD,95+
 ONGTD 15,421-424+
 CUTXD,100

Facility Type: AKF
 Size: 200
 Gauge: 24
C15A, 1501-1575 DEAD, 76-100



Way To Go Travel

Zoom Level: 17
 Scale: 1:5000



Keyboard shortcuts

REVISIONS		
Frontier COMMUNICATIONS		
DELAWARE -36-11.03		
PROJECT NUMBER: 2469701	CO AREA: MEDINA EXCHANGE CODE:	
DRAWN DATE: 4/10/20	ENG: BRAD SNYDER	COUNTY: CITY OF MENINA
SCALE: NTS	TAX DISTRICT:	
TWP:	RANGE:	SEC:

9D of 10

AE 400-24
 ONGTD 15, 101-150
 DEAD, 51-75
 ONGTD 15, 401-425
 ONGTD 15, 1-100
 DEAD, 201-250
 ONGTD 15, 251-280
 DEAD, 281-300
 ONGTD 15, 301-311
 DEAD, 312-321
 ONGTD 15, 322-400
DEAD, 1-200
ON521 107A, 1601-1625
DEADM 226-400

2423.101 976'
 05.2011
 AKF 400-24
 ONGTD 15, 1-150
 DEAD, 151-175
 ONGTD 15, 401-425
 DEAD, 201-250
 ONGTD 15, 251-280
 DEAD, 281-300
 ONGTD 15, 301-321
 DEAD, 330-350
 ONGTD 15, 351-400

2421.101 328'
 05.2011
 AE 400-24
 ONGTD 15, 1-150
 DEAD, 151-175
 ONGTD 15, 401-425
 DEAD, 201-250
 ONGTD 15, 251-275
 DEAD, 276-400

ON521 107A, 901-921
DEAD, 23-200

1 WORKING
 ONGTD 15, 371

1 WORKING

0 WORKING

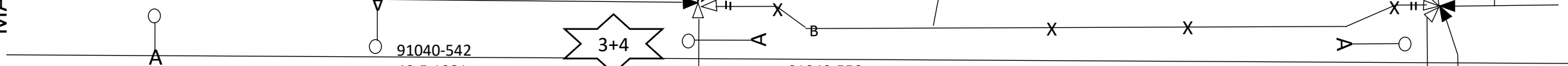
91040-550 SP1
 604+60 50LT

ENGINEERING NOTE:
 THIS SECTION OF CABLE IS
 BEING ABANDONED DUE TO
 EXTENSIVE GRADING AND CULVERT
 WORK PLANNED ON THIS PROJECT

← CO
 E CENTRAL AVE
 (SR 37)
 (SR 36)
 L91040

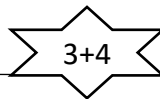
MATCH SHEET # 5

MATCH SHEET # 9



NT
 30-5;1970
 602+50 80RT

91040-542
 40-5;1981
 603+77 60RT



91040-550
 40-5;1981
 605+20 80RT

91040-592
 35-5;2011
 613+40

2421.101 202'
 01.1984
 AEF 50-24
 DEAD, 1
 (ONGTD 15, 352)
 (DEAD, 3-8)
 (ONGTD 15, 359-400)
DEAD, 1-19
ON521 107A, 1620-1622
DEAD, 22-50

2421.101 354'
 01.1999
 AKF 50-24
 (ONGTD 15, 351-375)
 (DEAD, 26-50)
DEAD, 1-21
ON521 107A, 1622-1625
DEAD, 26-50

1 WORKING
 ONGTD 15, 361

2421.101 255'
 01.1981
 AEF 25-24
 (ONGTD 15, 326-350)
DEAD, 1-21
ON521 107A, 1622-1625

2421.101 212'
 05.2011
 AE 25-22
 (ONGTD 15, 276-280)
DEAD, 1-25

2421.101 380'
 05.2011
 AEF 25-22
 (ONGTD 15, 301-311)
 (DEAD, 12-21)
 (ONGTD 15, 322-325)
ON521 107A, 901-921
DEAD, 22-25

2421.101 408'
 01.1997
 AKF 25-22
 DEAD, 1-25

2 WORKING (CIRCUIT)
 83/UHMT/001959/ /GTOH/
 ONGTD 15, 311+315

GRADE		NPANXX	LN#	CBL OFC	CABLE	PAIR#	STS	THROW TO	THROW LOCATION	LEN	TERM OFC	TERMINAL	ST #	DIR	STREET	ST	ST SUB	LAST NAME	FIRST NAME	CKT ID
XB1	1 PTY BUS W/HSI	740369	847	ONGTD	15	32	I	C15A, 1782	7	4211037	ONGTD	2023P1AS2	2424		STATE ROUTE 37			CENTRAL OH TIRE	OF DELAWARE	
B1	BUS. SINGLE PARTY	740368	1477	ONGTD	15	34	I	C15A, 1784		2205055	ONGTD	2000P43A	2415		STATE ROUTE 37			BUDGET TRUCK RE	NTAL	
CLECB	BUS. SINGLE PARTY	740362	4060	ONGTD	15	101	I	C15A, 1226*	8	4202063	ONGTD	2000P9S2	1100		SUNBURY	RD	UNIT 720	***ASPEN DENTAL	MANAGEMENT I	
B1	BUS. SINGLE PARTY	740369	2813	ONGTD	15	150	I	C15A, 1227*		4310044	ONKRG	2033P12AS2	1100		SUNBURY	RD		***VZW MWA		
CLECB	BUS. SINGLE PARTY	740362	620	ONGTD	15	125	I	C15A, 1228*		4310024	ONGTD	2000P9S2	1100		SUNBURY	RD	UNIT 720	***ASPEN DENTAL	MANAGEMENT I	
R1	BUS. SINGLE PARTY	740369	8302	ONGTD	15	117	I	C15A, 1517	9	3204035	ON521	2002P9A	533		GLENN	RD		RODGER	GLENN	
B1	BUS. SINGLE PARTY	740362	1945	ONGTD	15	413	I	C15A, 1513		4205004	ONKRG	3010P3S1A	2000		NUTTER FARMS	LN		***KROGER		
CLECB	BUS. SINGLE PARTY	740362	9797	ONGTD	15	418	I	C15A, 1518		3311005	ONKRG	3010P3S1A	2000		NUTTER FARMS	LN		***KROGER		
CLECB	BUS. SINGLE PARTY	740362	9796	ONGTD	15	422	I	C15A, 1522		3302007	ONKRG	3010P3S1A	2000		NUTTER FARMS	LN		***KROGER		
CLECB	BUS. SINGLE PARTY	740362	1749	ON521	107A	955	I	C15A, 1575*		130000150	ONKRG	3010P3S1A	2000		NUTTER FARMS	LN		***KROGER		
CLECB	BUS. SINGLE PARTY	740363	4151	ON521	107A	957	I	C15A, 1574*		130000080	ONGTD	2002P7AS3	973		SUNBURY	RD		***ALDI		
BHSIS	BUS STNDALONE STATIC	740362	8148	ON521	107A	962	I	C15A, 1573*		360011	ONKRG	3010P3S1A	2000		NUTTER FARMS	LN		WANDERING WIFI		
B1	BUS. SINGLE PARTY	740363	8810	ONGTD	15	223	I	ON521 107A, 1600*	10	2310093	ONGTD	25400P650S4A	607		SUNBURY	RD		HEAD START		
B1	BUS. SINGLE PARTY	740363	7627	ONGTD	15	224	I	ON521 107A, 1599*		2307113	ONGTD	25400P650S4A	607		SUNBURY	RD		HEAD START		
CDC	ANALOG CENTREX	740363	2667	ONGTD	15	225	I	ON521 107A, 1598*		16011015	ONGTD	25400P650S4A	607		SUNBURY	RD		HEAD START		
B1	BUS. SINGLE PARTY	740363	8811	ONGTD	15	228	I	ON521 107A, 1597*		19000110	ONGTD	25400P650S4A	607		SUNBURY	RD		HEAD START		
CDC	ANALOG CENTREX	740369	7473	ONGTD	15	240	I	ON521 107A, 1596*		4306110	ONGTD	25400P650S4A	607		SUNBURY	RD		HEAD START		
CDC	ANALOG CENTREX	740369	6479	ONGTD	15	237	I	ON521 107A, 1595*		3212085	ONGTD	25400P650S4A	601		SUNBURY	RD		HEAD START		
PL-FX	FOREIGN EXCHANGE	740548	7378	ONGTD	15	226	X	ON521 107A, 1594*					585		SUNBURY			***ACCENT COMMU	NICATION SERV	83/FXNA/740/548/7378/ / /
PL-FX	FOREIGN EXCHANGE	740548	7836	ONGTD	15	207	X	?			ONSTR	9090MDF-1	210		BUNTY STATION	RD				83FXNA7405487836
PL-FX	FOREIGN EXCHANGE	740548	7836	ONGTD	15	213	X	?			ONSTR	9090MDF-1	210		BUNTY STATION	RD				83FXNA7405487836
		0	0	ONGTD	15	230	I	?												
PL-HC	RES. SINGLE PARTY	0	0	ONGTD	15	311	X	ON521 107A, 921*	5		ONGTD	91040P592S2	680		SUNBURY	RD				83/UHMT/001959/ /GTOH/
PL-HC	HI CAP DIGITAL SERV	0	0	ONGTD	15	321	X	ON521 107A, 920*			ONGTD	91040P592S2	680		SUNBURY	RD				83/UHMT/001959/ /GTOH/
CLECB	BUS. SINGLE PARTY	740363	4066	ONGTD	15	371	I	ON521 107A, 1625*	3+4	3303026	ONGTD	91040P550S3	557		SUNBURY	RD		***COMMERCIAL B	ILLING TEAM	
PL-D2	HI CAP DIGITAL SERV	0	0	ONGTD	15	361	X	ON521 107A, 1620*			ONGTD	560SUNBURYRD	560		SUNBURY	RD	STE 1			0431PPS 560SUNBURYRD

6	RHSI	HI CAP DIGITAL SERV	740362	9737	ONGTD	15	426	I	ON521 107A, 1626	3307012	ONGTD	79302P35	510	SUNBURY	RD	LOT 31	DIAZ REYES	MARTIN JAVIER
7	HSI	HI CAP DIGITAL SERV	740369	5860	ONGTD	15	445	I	ON521 107A, 1645		ONGTD	79302P35	510	SUNBURY	RD	LOT 37	SMITH	RICHARD H
8																		
9	UHSRB	HI CAP DIGITAL SERV	740362	8169	ONGTD	15	462	I	ON521 107A, 1637		ONGTD	79301P30	510	SUNBURY	RD	LOT 43	MARCUM	CHERYL
0	UHSRB	HI CAP DIGITAL SERV	740362	9561	ONGTD	15	472	I	ON521 107A, 1647		ONGTD	79301P30	510	SUNBURY	RD	LOT 16	ROBERTS	JENNIFER
1	UHSRB	HI CAP DIGITAL SERV	740362	9561	ONGTD	15	475	I	ON521 107A, 1650		ONGTD	79301P30	510	SUNBURY	RD	LOT 16	ROBERTS	JENNIFER
2	UHSRB	HI CAP DIGITAL SERV	740362	8169	ONGTD	15	476	I	ON521 107A, 1649*		ONGTD	79301P30	510	SUNBURY	RD	LOT 43	MARCUM	CHERYL
3																		

33

1	GRADE		NPANXX	LN#	CBL OFC	CABLE	PAIR#	STS	THROW TO	THROW LOCATION	LEN	TERM OFC	TERMINAL	ST #	DIR	STREET	ST	ST SUB	LAST NAME	FIRST NAME
2	R1	RES. SINGLE PARTY	740362	7165	ONGTD	7	1773	I	ON521 107A, 1000*	11	4209034	ONGTD	2101P10A	1464		STATE ROUTE 521			THOMAS	JAMES
3																				
4	PL-HC	HI CAP DIGITAL SERV	0	0	ONGTD	7	1797	X	ON521 107A, 1688*	12		ONGTD	2100P3	501		BOWTOWN	RD		INTERNET COMMUN	ICATIONS
5																				
6	RHSI	HI CAP DIGITAL SERV	740362	9428	ONGTD	7	1828	I	SEE SHEET 7B		4305103	ONGTD	2100P10A	1389		BOWTOWN	RD		PITTSENBARGER	LINDA
7	R1	RES. SINGLE PARTY	740362	387	ONGTD	7	1844	I	SEE SHEET 7B		16007103	ONGTD	2100P88A	3780		BOWTOWN	RD		HUMES	JOHN N
8	RHSI	HI CAP DIGITAL SERV	740362	2239	ONGTD	7	1862	I	SEE SHEET 7B		2211037	ONGTD	2100P30A	2028		BOWTOWN	RD		WILLIAMSON	MELVIN
9	XB1	HI CAP DIGITAL SERV	740363	2496	ONGTD	7	1871	I	SEE SHEET 7B		3307023	ONGTD	2100P14A	1509		BOWTOWN	RD		CALDWELL	MAX
10																				
11	PL-HC	HI CAP DIGITAL SERV	0	0	ONGTD	7	1877	X	ON521 107A, 950*	6		ONGTD	2110P9S1	715		SUNBURY	RD		INTERNET	COMMUNICATIC
12																				
13																				

10B of 10

REVISIONS		
		
DELAWARE -36-11.03		
PROJECT NUMBER:	2469701	CO AREA: MEDINA EXCHANGE CODE:
DRAWN DATE:	4/10/20	ENG: BRAD SNYDER
SCALE:	NIS	COUNTY: CITY OF MENINA
TWP:	RANGE:	SEC: