

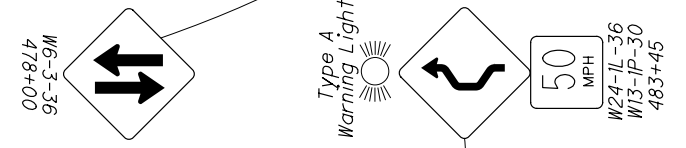
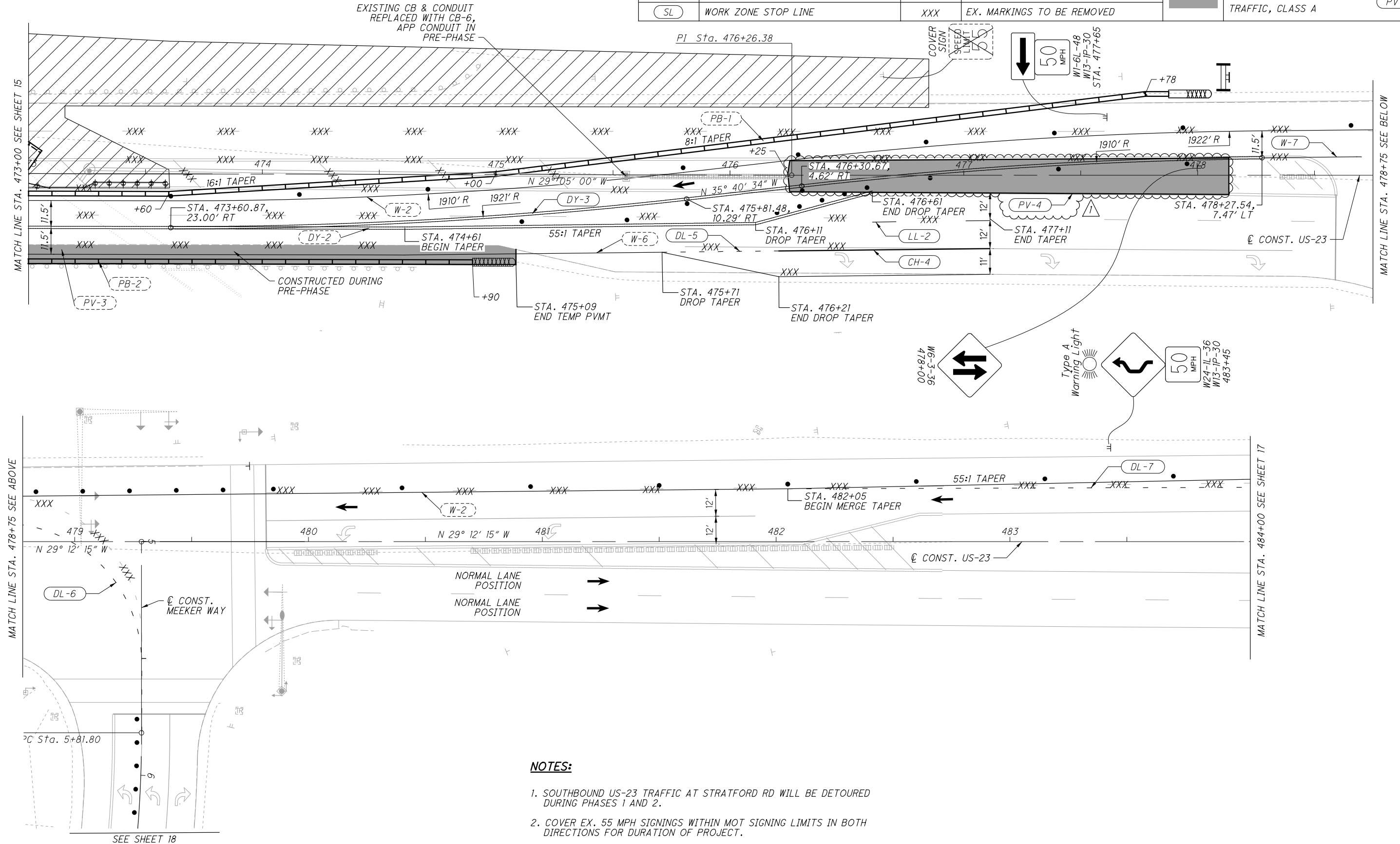


G:\DE\Clients\081892\_DEL-23-8.96\17010\Design\01\Sheets\17010\_MHI03.dgn Sheet 8/1/2023 1:19:43 PM Zarc

**LEGEND**

(AR)	WORK ZONE ARROW	(W)	WORK ZONE EDGE LINE, WHITE	(PB)	PORTABLE BARRIER
(CH)	WORK ZONE CHANNELIZING LINE	(Y)	WORK ZONE EDGE LINE, YELLOW	(I)	PORTABLE CHANGEABLE MESSAGE SIGN
(DL)	WORK ZONE DOTTED LINE	(Hatched)	AREA TO BE CONSTRUCTED	(XXXXXX)	BIDIRECTIONAL IMPACT ATTENUATOR
(DY)	WORK ZONE DOUBLE YELLOW	(←)	DIRECTION OF TRAFFIC	(XXXX)	UNIDIRECTIONAL IMPACT ATTENUATOR
(LL)	WORK ZONE LANE LINE	(•••)	DRUMS	(Grey)	PAVEMENT FOR MAINTAINING TRAFFIC, CLASS A
(SL)	WORK ZONE STOP LINE	(XXX)	EX. MARKINGS TO BE REMOVED	(PV)	

CALCULATED  
MDK  
CHECKED  
MWZ



**NOTES:**






1. SOUTHBOUND US-23 TRAFFIC AT STRATFORD RD WILL BE DETOURED DURING PHASES 1 AND 2.
2. COVER EX. 55 MPH SIGNINGS WITHIN MOT SIGNING LIMITS IN BOTH DIRECTIONS FOR DURATION OF PROJECT.
3. SEE SHEET 40 FOR MOT TYPICAL SECTIONS.

**MAINTENANCE OF TRAFFIC PHASE 1  
STA. 473+00 TO STA. 484+00**

**DEL-23-8.96**



G:\DE\Clients\0001\081892\_DEL-23-8.96\17010\Design\Roadway\Sheets\17010\_GG003.dgn Sheet 8/1/2023 12:44:51 PM Zora

SHEET NUM.											PART.		ITEM	ITEM EXT	GRAND TOTAL	UNIT	DESCRIPTION	SEE SHEET NO.
8	9	10	11	12	13						01/NHS/04	02/NHS/05						
				15							15		411	10000	15	CY	MAINTENANCE OF TRAFFIC STABILIZED CRUSHED AGGREGATE	
100				1,020	790						1,810		614	11110	100	hour	LAW ENFORCEMENT OFFICER WITH PATROL CAR FOR ASSISTANCE	
				1	1						2		614	12380	2	FT	INCREASED BARRIER DELINEATION	
				2							2		614	12384	2	EACH	WORK ZONE IMPACT ATTENUATOR, 24" WIDE HAZARDS, (UNIDIRECTIONAL)	
			LS								LS		614	12420	LS	EACH	WORK ZONE IMPACT ATTENUATOR, 24" WIDE HAZARDS, (BIDIRECTIONAL)	
													614			LS	DETOUR SIGNING	
2	1,016										2		614	12484	2	EACH	WORK ZONE INCREASED PENALTIES SIGN	
				21	16						1,016		614	12801	1,016	EACH	WORK ZONE RAISED PAVEMENT MARKER, AS PER PLAN	9
		3									37		614	13350	37	EACH	OBJECT MARKER, ONE WAY	
											3		614	18601	3	SNMT	PORTABLE CHANGEABLE MESSAGE SIGN, AS PER PLAN	10
				0.09	0.1						0.19		614	20210	0.19	MILE	WORK ZONE LANE LINE, CLASS I, 6", 740.06, TYPE I	
				0.35	0.45						0.8		614	21200	0.8	MILE	WORK ZONE CENTER LINE, CLASS I, 740.06, TYPE I	
				0.97	0.92						1.89		614	22210	1.89	MILE	WORK ZONE EDGE LINE, CLASS I, 6", 740.06, TYPE I	
				832	327						1,159		614	23410	1,159	FT	WORK ZONE CHANNELIZING LINE, CLASS I, 12", 740.06, TYPE I	
				1,677	1,735						3,412		614	24402	3,412	FT	WORK ZONE DOTTED LINE, CLASS I, 6", 740.06, TYPE I	
				4	1						5		614	30400	5	EACH	WORK ZONE ARROW, CLASS I, 740.06, TYPE I	
1											1		614	40051	1	EACH	BUSINESS ENTRANCE SIGN, AS PER PLAN	8
													615	20000		SY	PAVEMENT FOR MAINTAINING TRAFFIC, CLASS A	
	1										1		616	10000	1	MGAL	WATER	
				670	690						1,360		622	41100	1,360	FT	PORTABLE BARRIER, UNANCHORED	
				350	100						450		622	41110	450	FT	PORTABLE BARRIER, ANCHORED	
2											2		808	18700	2	SNMT	DIGITAL SPEED LIMIT (DSL) SIGN ASSEMBLY	
											LS	LS	614	11000	LS		INCIDENTALS MAINTAINING TRAFFIC	
											3		619	16010	3	MNTH	FIELD OFFICE, TYPE B	
											LS	LS	623	10000	LS		CONSTRUCTION LAYOUT STAKES AND SURVEYING	
											LS	LS	624	10000	LS		MOBILIZATION	

GENERAL SUMMARY

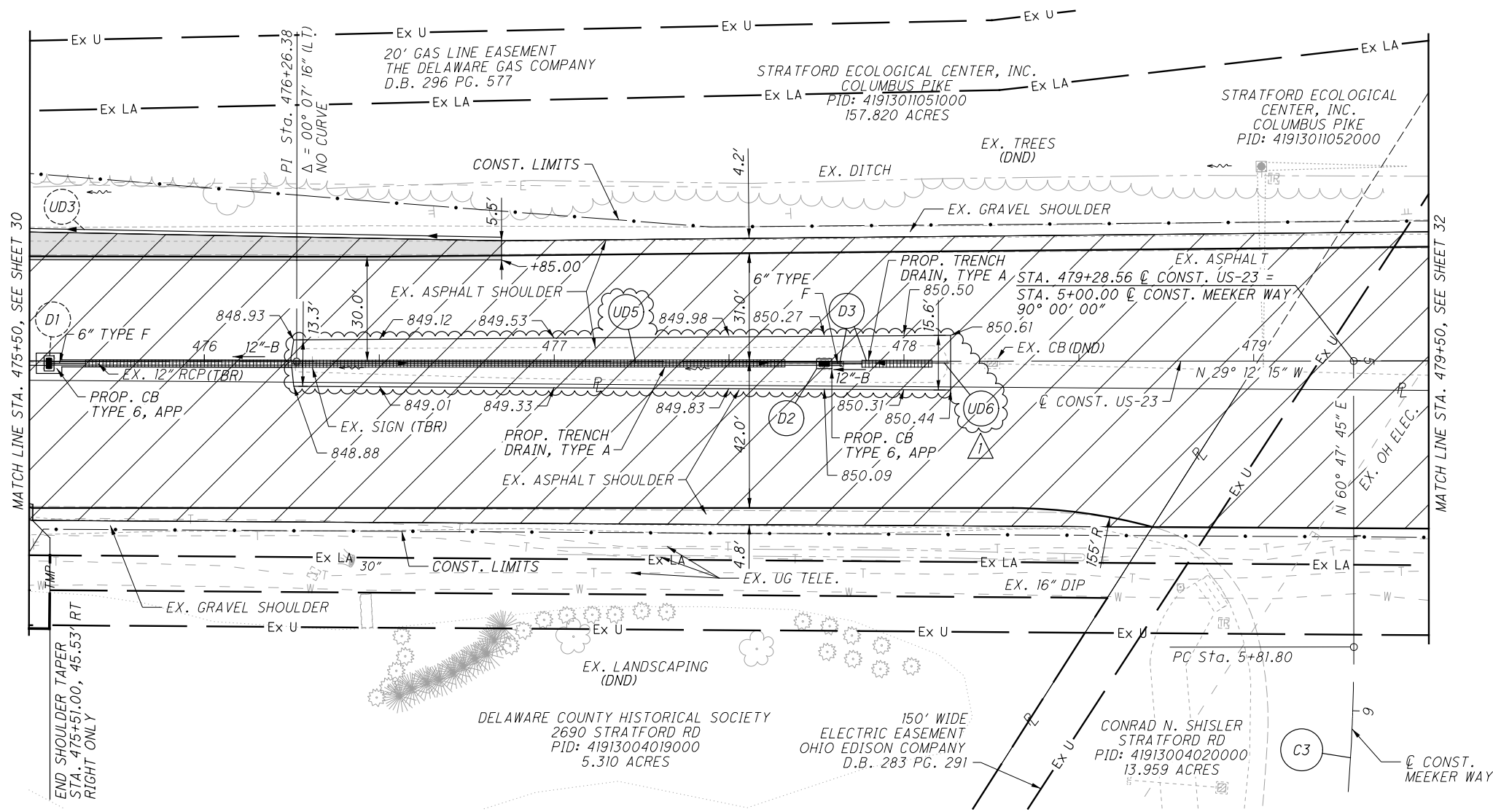
DEL-23-8.96

G:\DE\clients\DDOT\081892\_DEL-23-8.96\17010\Design\Roadway\Sheets\17010\_GS001.dgn Sheet 8/3/2023 9:08:58 AM Zora

REF. NO.	SHEET NO.	STATION TO STATION		202				601		605		606				609	611										626		670	839	FOR INFORMATION ONLY	
				PIPE REMOVED, 24" AND UNDER	GUARDRAIL REMOVED	CATCH BASIN REMOVED	SPECIAL - FILL AND PLUG EXISTING CONDUIT, 12"	TIED CONCRETE BLOCK MAT WITH TYPE 2 UNDERLAYMENT	TIED CONCRETE BLOCK MAT WITH TYPE 2 UNDERLAYMENT	6" UNCLASSIFIED PIPE UNDERDRAINS	6" BASE PIPE UNDERDRAINS	GUARDRAIL, TYPE MGS WITH LONG POSTS	ANCHOR ASSEMBLY, MGS TYPE B	ANCHOR ASSEMBLY, MGS TYPE T	MGS BRIDGE TERMINAL ASSEMBLY, TYPE 1	MGS BRIDGE TERMINAL ASSEMBLY, TYPE 2	CURB, TYPE 4-C	6" CONDUIT, TYPE F FOR UNDERDRAIN OUTLETS	6" CONDUIT, TYPE F	12" CONDUIT, TYPE B	12" CONDUIT, TYPE B, 706.02	15" CONDUIT, TYPE B	15" CONDUIT, TYPE B, AS PER PLAN, 706.02	MANHOLE, NO. 3	CATCH BASIN, NO. 6, AS PER PLAN	PRECAST REINFORCED CONCRETE OUTLET	BARRIER REFLECTOR, TYPE 1, ONE-WAY	BARRIER REFLECTOR, TYPE 3, ONE WAY	SLOPE EROSION PROTECTION MAT, TYPE B	TRENCH DRAIN, TYPE A WITH STANDARD GRATE	6" PLUG	90° BEND
FT	FT	EA	FT	SY	SY	FT	FT	FT	EA	EA	EA	EA	FT	FT	FT	FT	FT	FT	EA	EA	EA	EA	EA	EA	SY	FT	EA	EA				
R1	30	472+08.25	474+93.20																													
R2	30	472+45.57	474+65.97																													
D1	30-31	473+31.67	475+55.60	39		1	226																									
EC1	30	471+75.47	472+27.40																													
EC2	30	472+51.81	473+38.78				2	8																								
EC3	30	472+81.99	474+74.57					8																								
EC4	30	473+92.38	474+74.60																													
GR1	30	471+72.23	472+22.00																													
GR2	30	472+49.64	473+36.61																													
GR3	30	472+79.40	474+77.44																													
GR4	30	473+92.00	474+79.50																													
UD1	30	471+76.31	472+20.98																													
UD2	30	472+58.27	473+21.00																													
UD3	30-31	472+92.84	476+85.02																													
UD4	30	473+98.32	475+22.17																													
UD5	31	476+26.00	477+75.00																													
UD6	31	477+79.00	478+12.00																													
D2	31	475+55.60	477+77.20	222		1																										
D3	31	477+77.20	478+08.00	5																												
D4	30	473+27.21	473+31.67																													
C1	30	472+80.00	472+98.15																													
TOTALS CARRIED TO GENERAL SUMMARY				266	513	2	226	2	16	176	631	300	1	3	2	2	19	22	45	222	5	230	8	1	2	3	6	12	296	220	4	4

CALCULATED	MDK	CHECKED	MWZ
<b>SUBSUMMARY</b>			
<b>DEL - 23 - 8.96</b>			
26		52	

G:\DE\Clients\081892\_DEL-23-8.96\17010\_Design\Roadway\Sheets\17010\_GPO04.dgn Sheet 8/3/2023 11:46:06 AM Zora



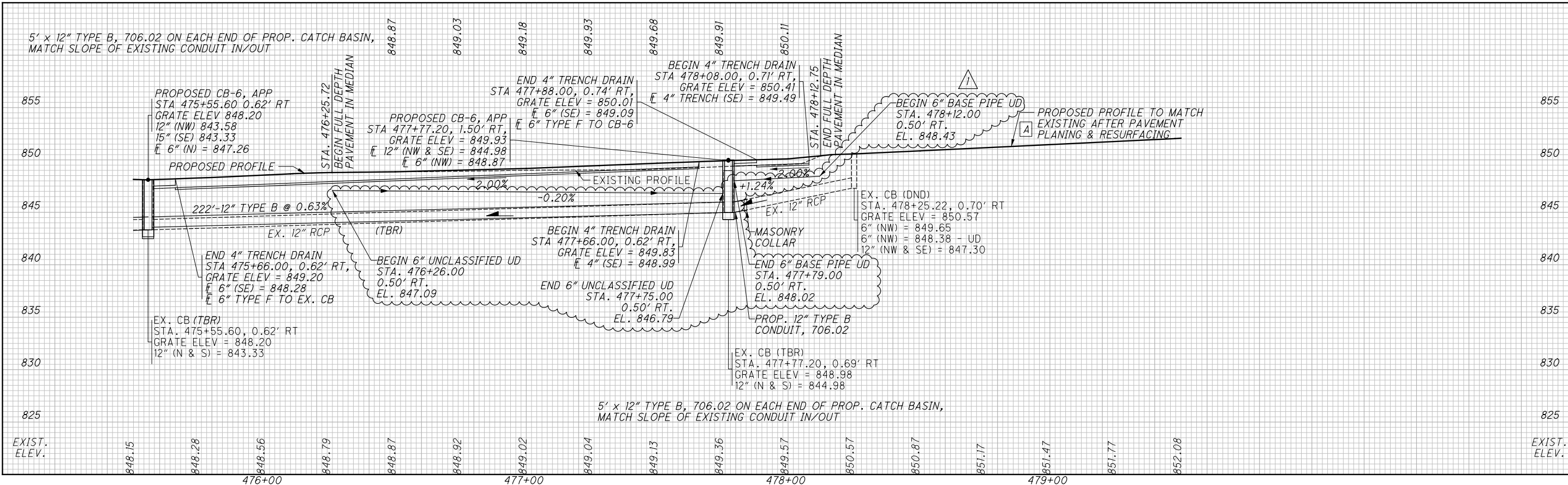
MEEKER WAY  
 C3  
 P.I. Sta. 7+57.48  
 $\Delta = 37^\circ 16' 38''$  (RT)  
 $D_c = 11^\circ 00' 00''$   
 $R = 520.87'$   
 $T = 175.68'$   
 $L = 338.88'$   
 $E = 28.83'$   
 $C = 332.94'$   
 $C.B. = N 79^\circ 26' 04'' E$   
 $\theta_{MAX} = NC$

FOR ESTIMATED QUANTITIES, SEE SHEETS 26 - 27

A - LOCATION BASED ON DEL-23-8.77 PLANS

**LEGEND**

- PROP. 1/2" PVMT PLANING AND RESURFACING
- PROP. FULL DEPTH PVMT



PLAN AND PROFILE  
 STA. 475+50 TO STA. 479+50  
 DEL-23-8.96  
 31  
 52