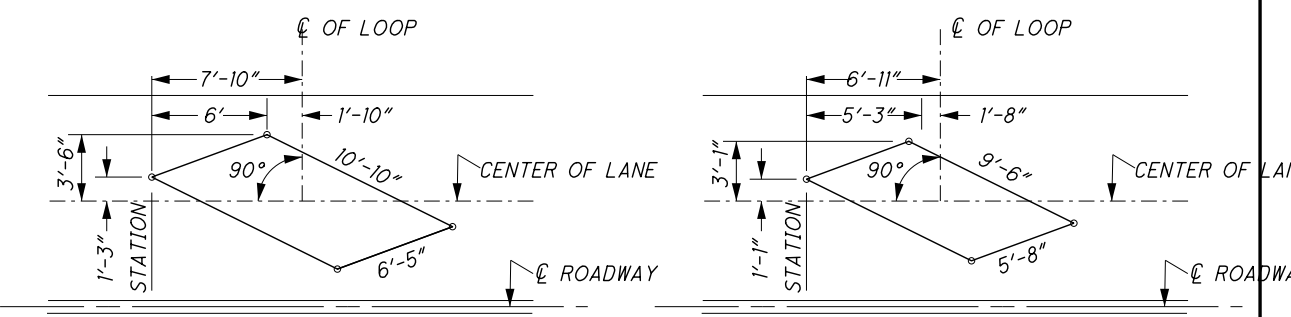
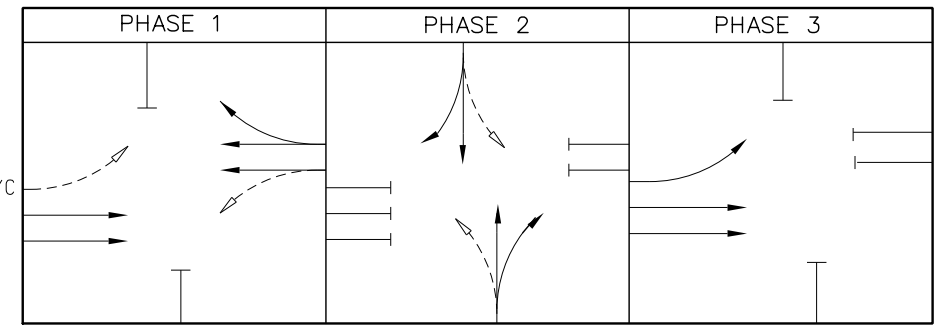


MATERIAL REQUIRED	
QTY	DESCRIPTION
1483'	CONDUIT, 1", 725.04
26'	CONDUIT, 2", 725.04
95'	CONDUIT JACKED OR DRILLED UNDER PAVM. 2"
15	PULL BOX, 725.08, 18"
3	GROUND ROD
4	VEH. SIGNAL HEAD, 3-SECTION, 12" LENS, 1-WAY
2	VEH. SIGNAL HEAD, 3-SECTION, 12" LENS, 2-WAY
1	VEH. SIGNAL HEAD, 5-SECTION, 12" LENS, 1-WAY
12	LOOP DETECTOR UNIT
1	BREAKAWAY TETHER POLE CONNECTION
153'	MESSENGER WIRE, 7-STRAND, 1/4" DIA.
153'	MESSENGER WIRE, 7-STRAND, 3/8" DIA.
127'	SIGNAL CABLE, 3/C, NO. 14 AWG
525'	SIGNAL CABLE, 5/C, NO. 14 AWG
16	DETECTOR LOOP
3138'	LOOP DETECTOR LEAD-IN CABLE, 2/C, NO. 14 AWG
54'	POWER CABLE, 2/C, NO. 6 AWG
30'	POWER CABLE, 3/C, NO. 6 AWG
1	POWER SERVICE
5.24CY	CONCRETE FOR ANCHOR BASE FOUNDATION
2	STRAIN POLE, TC-81.10, DESIGN 7
1	CONTROLLER, ACTUATED, 4-PH, SOLID STATE DIGITAL MICROPROCESSOR
2 EA	CONTROLLER WORKPAD
1	UPS SYSTEM WITH ENCLOSURE

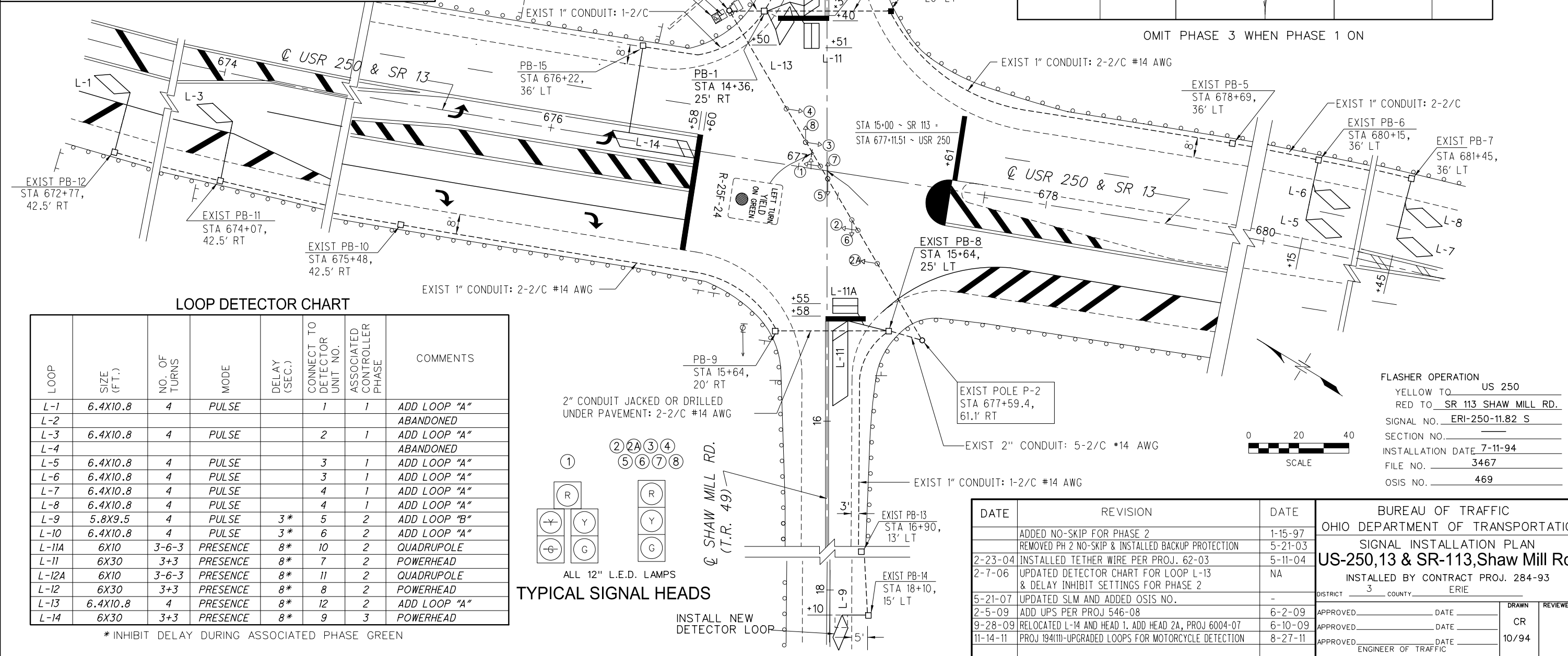


ANGULAR DESIGN DETECTION (ADD) LOOP DETAIL "A" ANGULAR DESIGN DETECTION (ADD) LOOP DETAIL "B"

SIGNAL PHASING DIAGRAM



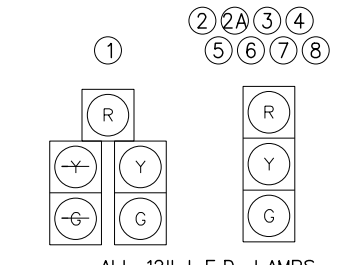
OMIT PHASE 3 WHEN PHASE 1 ON



LOOP DETECTOR CHART

LOOP	SIZE (FT.)	NO. OF TURNS	MODE	DELAY (SEC.)	CONNECT TO DETECTOR UNIT NO.	ASSOCIATED CONTROLLER PHASE	COMMENTS
L-1	6.4X10.8	4	PULSE		1	1	ADD LOOP "A"
L-2							ABANDONED
L-3	6.4X10.8	4	PULSE		2	1	ADD LOOP "A"
L-4							ABANDONED
L-5	6.4X10.8	4	PULSE		3	1	ADD LOOP "A"
L-6	6.4X10.8	4	PULSE		3	1	ADD LOOP "A"
L-7	6.4X10.8	4	PULSE		4	1	ADD LOOP "A"
L-8	6.4X10.8	4	PULSE		4	1	ADD LOOP "A"
L-9	5.8X9.5	4	PULSE	3*	5	2	ADD LOOP "B"
L-10	6.4X10.8	4	PULSE	3*	6	2	ADD LOOP "A"
L-11A	6X10	3-6-3	PRESENCE	8*	10	2	QUADRUPOLE
L-11	6X30	3+3	PRESENCE	8*	7	2	POWERHEAD
L-12A	6X10	3-6-3	PRESENCE	8*	11	2	QUADRUPOLE
L-12	6X30	3+3	PRESENCE	8*	8	2	POWERHEAD
L-13	6.4X10.8	4	PRESENCE	8*	12	2	ADD LOOP "A"
L-14	6X30	3+3	PRESENCE	8*	9	3	POWERHEAD

* INHIBIT DELAY DURING ASSOCIATED PHASE GREEN



TYPICAL SIGNAL HEADS

INSTALL NEW DETECTOR LOOP

DATE	REVISION	DATE
	ADDED NO-SKIP FOR PHASE 2	1-15-97
	REMOVED PH 2 NO-SKIP & INSTALLED BACKUP PROTECTION	5-21-03
2-23-04	INSTALLED TETHER WIRE PER PROJ. 62-03	5-11-04
2-7-06	UPDATED DETECTOR CHART FOR LOOP L-13 & DELAY INHIBIT SETTINGS FOR PHASE 2	NA
5-21-07	UPDATED SLM AND ADDED OSIS NO.	-
2-5-09	ADD UPS PER PROJ 546-08	6-2-09
9-28-09	RELOCATED L-14 AND HEAD 1. ADD HEAD 2A, PROJ 6004-07	6-10-09
11-14-11	PROJ 1941(11)-UPGRADED LOOPS FOR MOTORCYCLE DETECTION	8-27-11

FLASHER OPERATION
 YELLOW TO US 250
 RED TO SR 113 SHAW MILL RD.
 SIGNAL NO. ERI-250-11.82 S
 SECTION NO. _____
 INSTALLATION DATE 7-11-94
 FILE NO. 3467
 OSIS NO. 469

BUREAU OF TRAFFIC
 OHIO DEPARTMENT OF TRANSPORTATION
 SIGNAL INSTALLATION PLAN
US-250, 13 & SR-113, Shaw Mill Rd.
 INSTALLED BY CONTRACT PROJ. 284-93
 DISTRICT 3 COUNTY ERIE
 APPROVED _____ DATE _____
 ENGINEER OF TRAFFIC
 DRAWN CR
 REVIEWED 10/94

DESIGN FILE: I:\FIELD\N\ELECTRICAL\SIGNAL\DGN\VE250&113.dgn
 WORKSTATION: rronney DATE: 11/14/2011