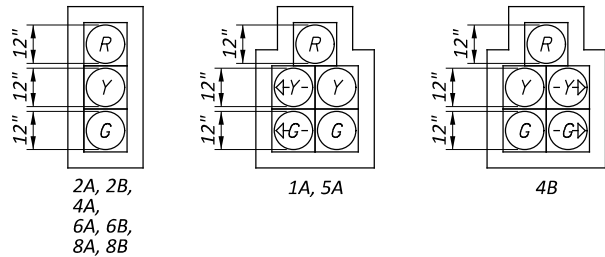
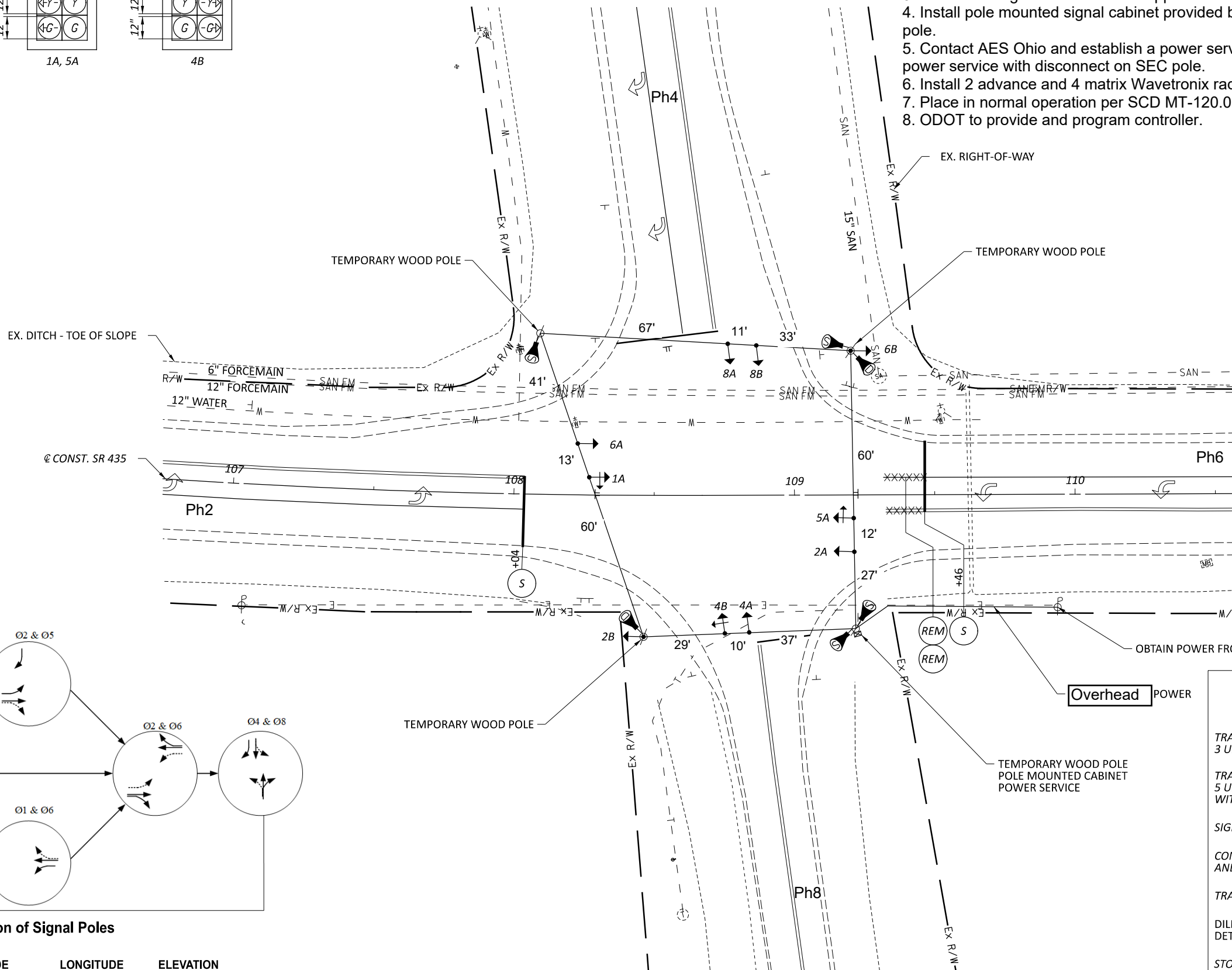
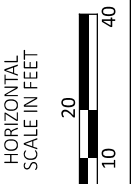




**SIGNAL HEADS**

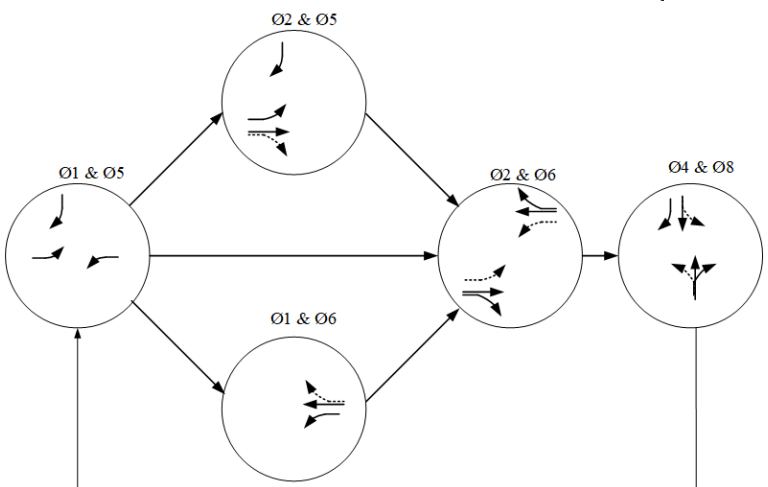


1. Install 4 Class 4 20' wood poles with down guy at the locations shown below. D6 Traffic will walk the site with the contractor prior to beginning work.
2. Install messenger wire and tether as shown below.
3. Install a 7c signal cable for each approach and 10 signal heads as shown.
4. Install pole mounted signal cabinet provided by ODOT with riser on SEC pole.
5. Contact AES Ohio and establish a power service and install a metered power service with disconnect on SEC pole.
6. Install 2 advance and 4 matrix Wavetronix radar systems.
7. Place in normal operation per SCD MT-120.00.
8. ODOT to provide and program controller.



SIGNAL HEAD	INDICATION	FIELD TERMINAL	FLASH
1A (WB LT)	R	6R	R
	Y	6Y	
	G	6G	
	<-Y...>	1Y	
2A, 2B (EB)	R	2R	R
	Y	2Y	
	G	2G	
	-	-	
5A (EB LT)	R	2R	R
	Y	2Y	
	G	2G	
	<-Y...>	5Y	
4A (SB)	R	4R	R
	Y	4Y	
	G	4G	
	-	-	
4B (SB RT)	R	4R	R
	Y	4Y	
	G	4G	
	---Y-->	5Y	
6A, 6B (WB)	R	6R	R
	Y	6Y	
	G	6G	
	-	-	
8A, 8B (NB)	R	8R	R
	Y	8Y	
	G	8G	
	-	-	

LS = LOAD SWITCH



**Location of Signal Poles**

POLE	LATITUDE	LONGITUDE	ELEVATION
P1 NW	39.61045418	-83.58685198	1046.32
P2 SW	39.6101483	-83.58682222	1050.4
P3 NE	39.61036836	-83.58648397	1047.72
P4 SE	39.61009873	-83.58656948	1050.26

**LEGEND**

	PROP	EXIST
TRAFFIC SIGNAL, 3 UNIT HEAD, 12"		
TRAFFIC SIGNAL, 5 UNIT HEAD, 12" WITH ARROWS		
SIGNAL SUPPORT POLE		
CONTROLLER CABINET AND WORK PAD (TS-2)		
TRAFFIC PULL BOX		
DILEMMA ZONE RADAR DETECTION UNIT		
STOP BAR RADAR DETECTION UNIT		
PROPOSED STOP LINE		
PROPOSED PAVEMENT MARKING REMOVAL		

**INTERIM SIGNAL PLAN  
SR-435 AND BLUEGRASS BLVD/SR 729**

**FAY-SR 435-2.91**

MODEL: 123327\_CPO01\_SHEET\_PAPER SIZE: 17x11 (in.) DATE: 12/12/2022 TIME: 12:57:27 PM USER: lsack  
O:\Fayette Cnty\Eng\123327\A-03 - Project HI-light signal design\123327\400-Engineering\Signals\Sheets\123327\_CPO0A.dgn

DESIGN AGENCY

DESIGNER  
**ARW**

REVIEWER  
TVF 11/04/22

PROJECT ID  
123327

SHEET TOTAL  
7 | 7

**D06 ELEC MAINT. FY22--MAINTENANCE QUANTITIES**

Prop Line Nbr	Description	TS-2 FAY-435/729 Temp Signal
0059	LIGHTING, MISC.: TROUBLESHOOTING (INCLUDES 2 MEN AND 60'	3
0060	VH SG HD, (LED),3SEC,12",1WAY, POLY , BLACK	7
0061	VH SG HD, (LED),5SEC,12",1WAY, POLY , BLACK	3
0063	COVERING/VEH SIG HEAD	10
0068	MSGR WIRE, 7 ST, 3/8" ACC	405
0069	TETHER WIRE, WITH ACCESSORIES, APP	405
0070	SIGNAL CABLE, 7/C, 14AWG, APP	640
0074	SERVICE CABLE, 3 COND, 6AWG	70
0075	POWER SERVICE	1
0076	COND RISER, 2"	1
0077	WOOD POLE	4
0078	DOWN GUY	4
0090	ADVANCE RADAR DETECTION, APP	4
0091	STOP LINE RADAR DETECTION, APP	2
0093	MT TRAF-1 LN CLOSE/2 LANE HWY	2
0097	MAINTAINING TRAFFIC, MISC.: NEW CABINET INSTALLATION	1
0100	MOBILIZATION, APP A (SIGNAL MAINTENANCE/UPGRADE)	1