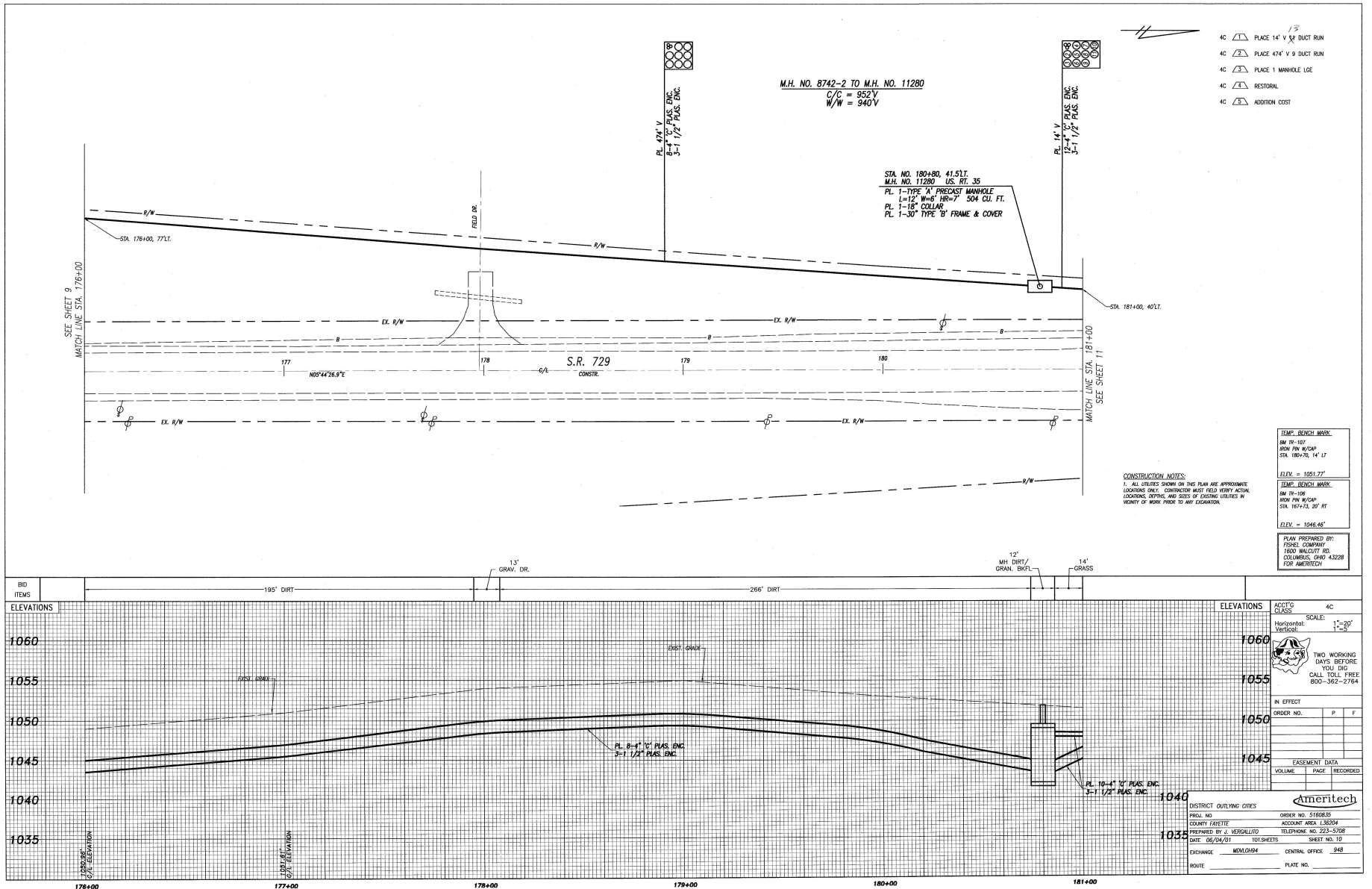


E:\HOME\CAD\DWG\AMERITECH\PROJECTS\10334\10334-141\271\10334-141.DWG, 09/04/2009 09:50:04 AM, CL



M.H. NO. 8742-2 TO M.H. NO. 11280
C/C = 952V
W/W = 940V

STA. NO. 180+80, 41.517
M.H. NO. 11280 US. RT. 35
PL. 1-TYPE 'A' PRECAST MANHOLE
L=12' W=6' HR=7' 504 CU. FT.
PL. 1-18" COLLAR
PL. 1-30" TYPE 'B' FRAME & COVER

- 4C PLACE 14' V 9/8 DUCT RUN
- 4C PLACE 474' V 9 DUCT RUN
- 4C PLACE 1 MANHOLE LGE
- 4C RESTORAL
- 4C ADDITION COST

CONSTRUCTION NOTES:
1. ALL UTILITIES SHOWN ON THIS PLAN ARE APPROXIMATE LOCATIONS ONLY. CONTRACTOR MUST FIELD VERIFY ACTUAL LOCATIONS, DEPTHS AND SIZES OF EXISTING UTILITIES IN VIEW OF WORK PRIOR TO ANY EXCAVATION.

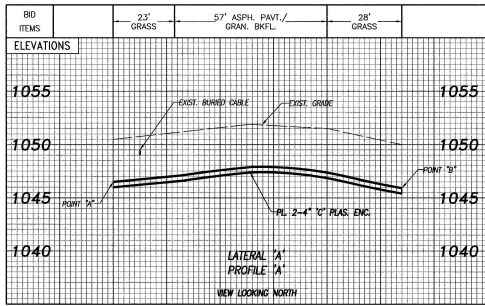
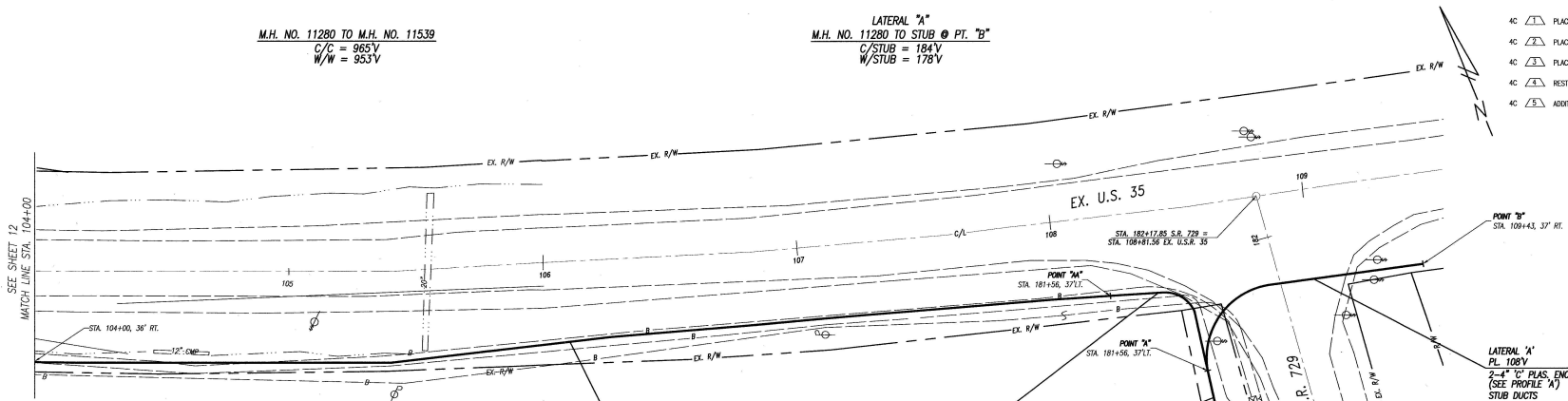
TEMP. BENCH MARK BM 89-107 R/W P/W W/CAP STA. 180+00, 14' LT ELEV. = 1051.77'	TEMP. BENCH MARK BM 89-108 R/W P/W W/CAP STA. 180+73, 20' RT ELEV. = 1046.46'
PLAN PREPARED BY: FISHER COMPANY 1600 WALCOTT RD. COLUMBUS, OHIO 43228 FOR AMERITECH	

ELEVATIONS	ADJUST CLASS	4C
SCALE:	Horizontal:	1"=20'
	Vertical:	1"=5'
1060		
1055		
1050	IN EFFECT	
1045	ORDER NO.	P F
1040	EASEMENT DATA	
1035	VOLUME	PAGE RECORDED
	DISTRICT OUTLYING CITIES	ORDER NO. 158285
	PROJ. NO.	ACCOUNT AREA 138204
	COUNTY FAYETTE	TELEPHONE NO. 223-5708
	DATE 08/04/01	SHEET NO. 10
	EXCHANGE MONTGOMERY	CENTRAL OFFICE 948
	ROUTE	PLATE NO.

M.H. NO. 11280 TO M.H. NO. 11539
 C/C = 965V
 W/W = 953V

LATERAL "A"
 M.H. NO. 11280 TO STUB @ PT. "B"
 C/STUB = 184V
 W/STUB = 178V

- 4C PLACE 96" V 11 DUCT RUN
- 4C PLACE 504" V 9 DUCT RUN
- 4C PLACE 108" V 2 DUCT RUN
- 4C RESTORATION
- 4C ADDITIONAL COST



PL. 48' V
 8-4" C' PLAS. ENC.
 3-1 1/2" PLAS. CONC. ENC.

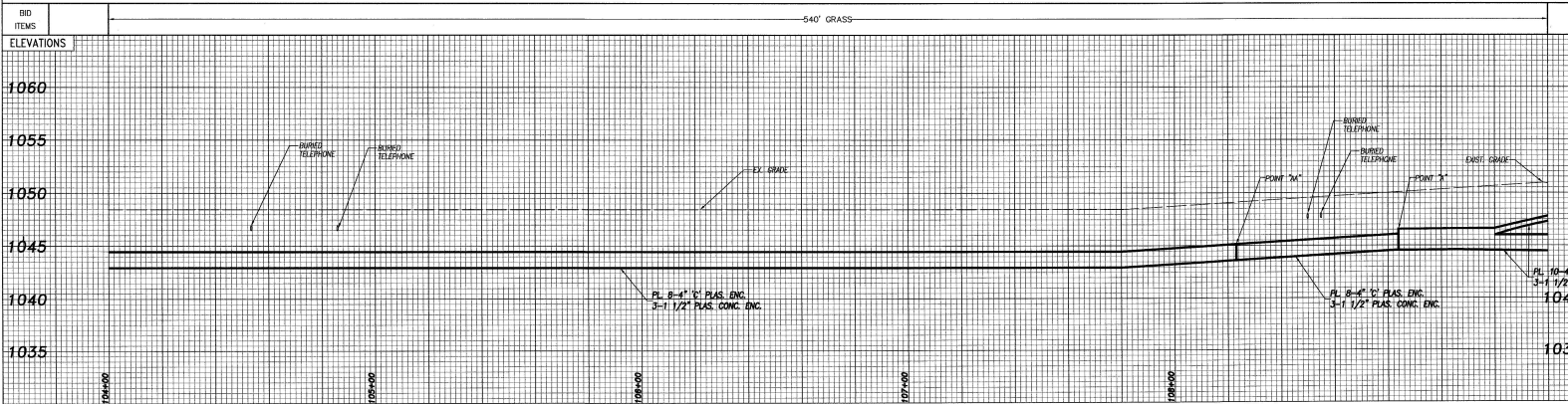
PL. 60' V
 8-4" C' PLAS. ENC.
 3-1 1/2" PLAS. ENC.

PL. 65' V
 10-4" C' PLAS. ENC.
 3-1 1/2" PLAS. CONC. ENC.

CONSTRUCTION NOTES:
 1. ALL UTILITIES SHOWN ON THIS PLAN ARE APPROXIMATE LOCATIONS ONLY. CONTRACTOR MUST FIELD VERIFY ACTUAL LOCATIONS, DEPTHS, AND SIZES OF EXISTING UTILITIES IN VICINITY OF WORK PRIOR TO ANY CONSTRUCTION.

TEMP. BENCH MARK
 BM 78-107
 HIGH PINE W/CAOP
 STA. 108+70.14' LT
 ELEV. = 1051.77'

PLAN PREPARED BY:
 FISHER COMPANY
 1600 WALCOTT RD.
 COLUMBUS, OHIO 43228
 FOR AMERITECH



ELEVATIONS	ACCTG CLASS	4C
1060	Horizontal: 1"=30'	Vertical: 1"=2'
1055	TWO WORKING DAYS BEFORE YOU DIG CALL TOLL FREE 800-362-2764	
1050	IN EFFECT	
1045	ORDER NO.	P F
1040	EASEMENT DATA	
1035	VOLUME	PAGE RECORDED

DISTRICT OULTING CITIES

PREL. NO. ORDER NO. 5160825

COUNTY FAYETTE ACCOUNT AREA L25208

PREPARED BY J. VERGALLITO TELEPHONE NO. 223-5308

DATE 06/04/01 101 SHEETS SHEET NO. 11

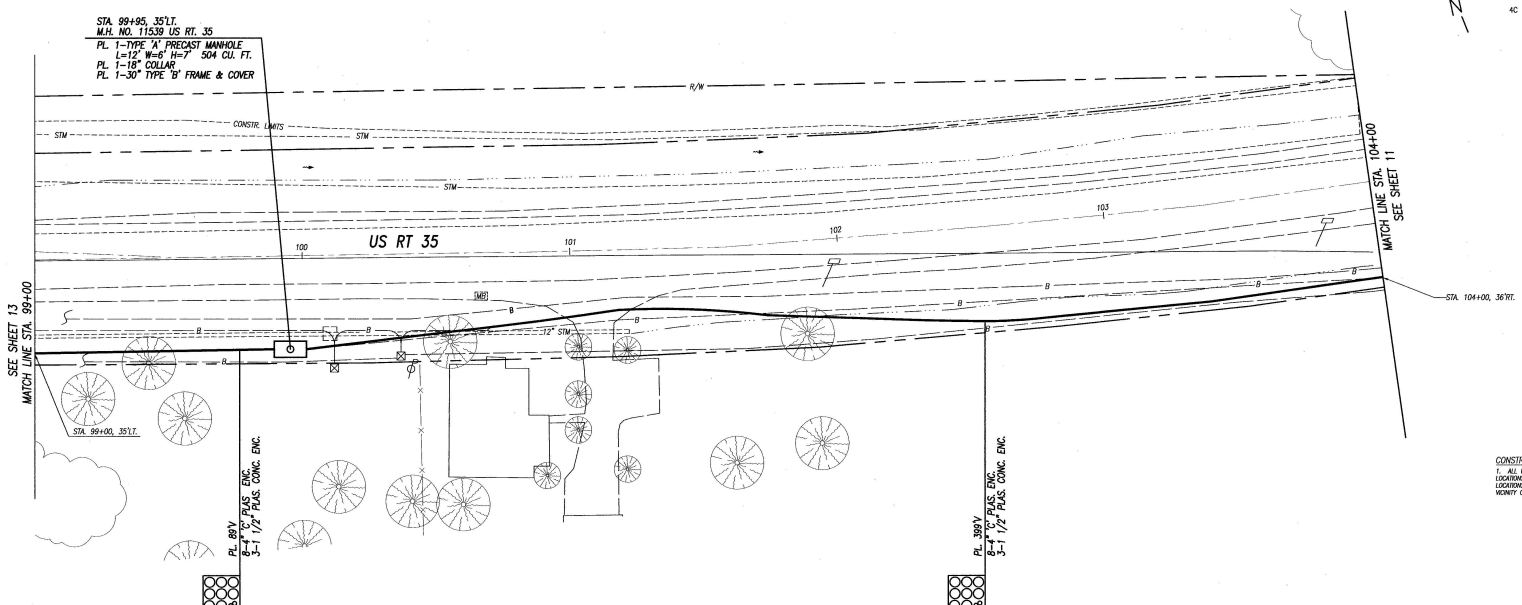
EXCHANGE MIXEL0854 CENTRAL OFFICE 948

ROUTE PLATE NO.

Ameritech

- 4C PL. 488V 9 DUCT RUN
- 4C PL. 1-MANHOLE LGE
- 4C RESTORAL
- 4C ADDITIONAL COST

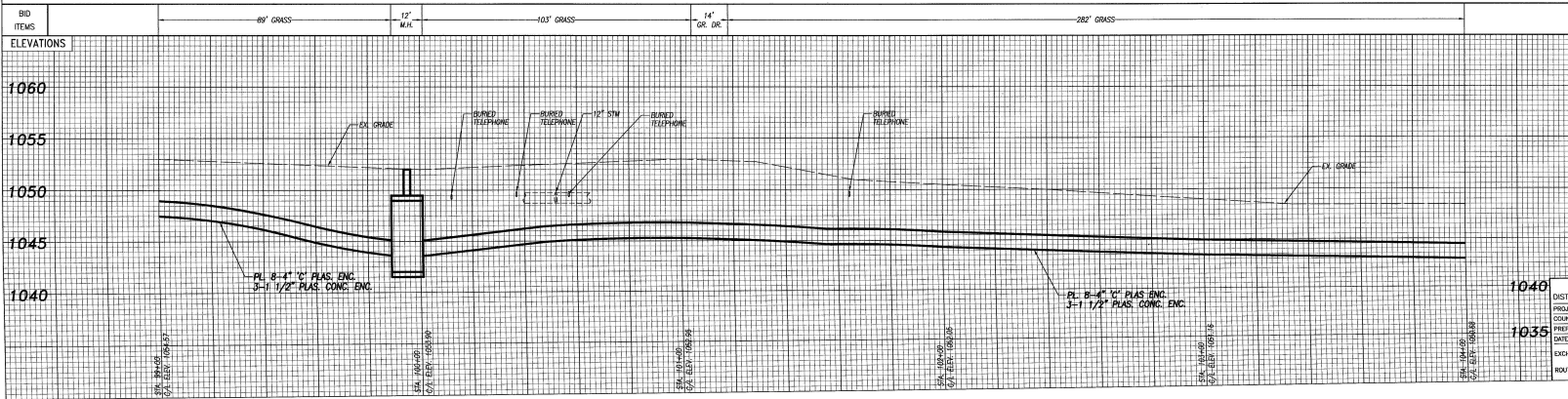
STA. 99+95, 35/1.
 M.H. NO. 11539 US RT. 35
 PL. 1-TYPE 'A' PRECAST MANHOLE
 L=12' WING 18" 7' 5/4" O.U. FT.
 PL. 1-18" COLLAR
 PL. 1-30" TYPE 'B' FRAME & COVER



BENCH MARK JR. J
 STA. 102+72, 18' RT.
 IRON PIN WITH CAP
 ELEV. 1023.51

CONSTRUCTION NOTES:
 1. ALL UTILITIES SHOWN ON THIS PLAN ARE APPROXIMATE LOCATIONS ONLY. CONTRACTOR MUST FIELD VERIFY ACTUAL LOCATIONS, DEPTHS, AND SIZES OF EXISTING UTILITIES IN VICINITY OF WORK PRIOR TO ANY EXCAVATION.

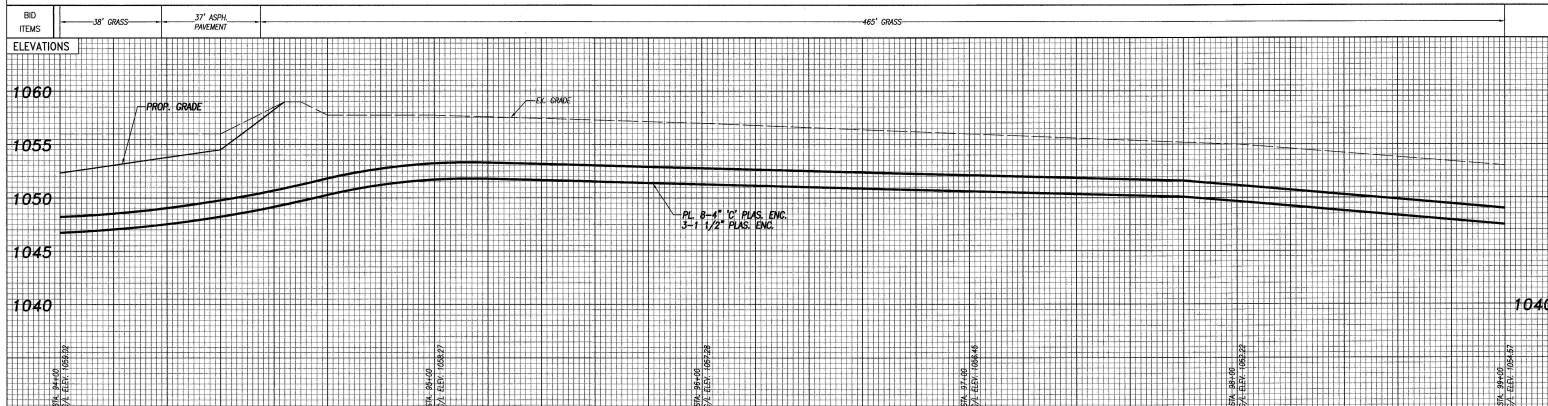
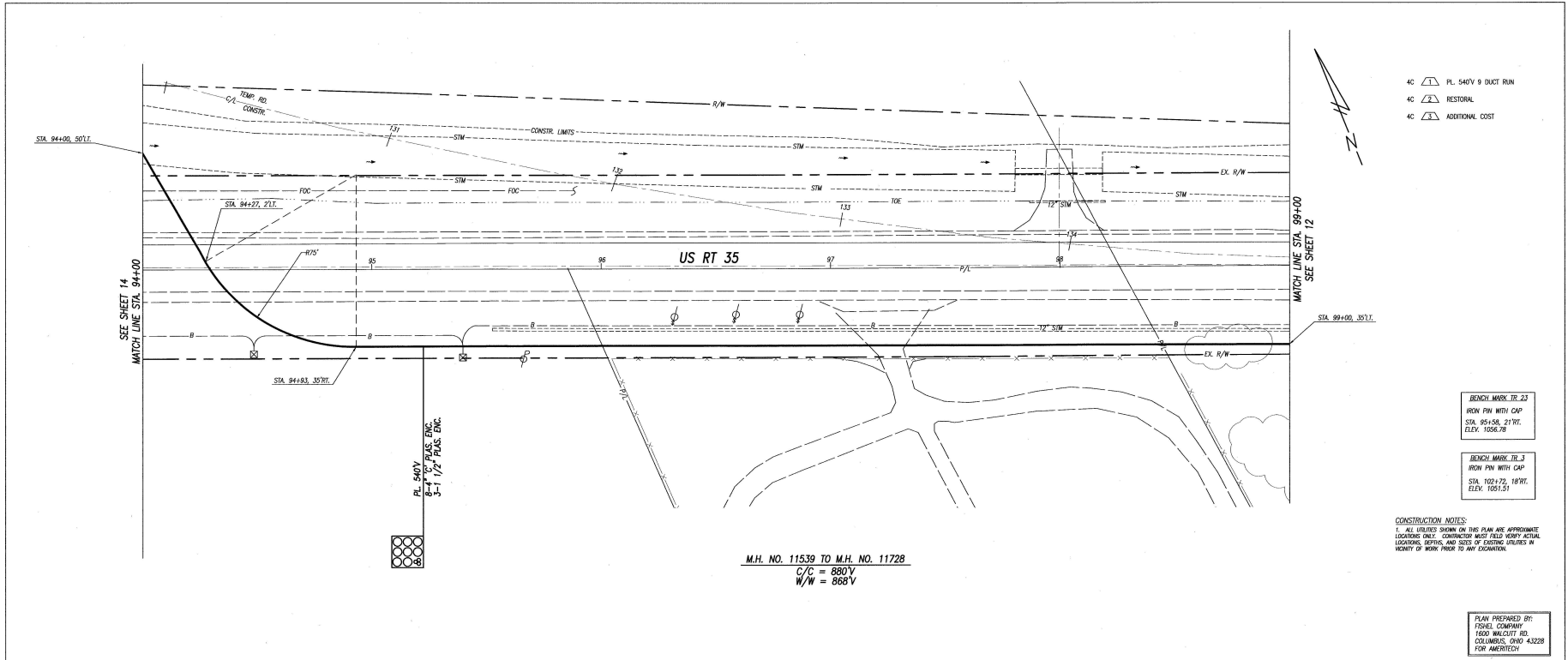
PLAN PREPARED BY:
 FISHEL COMPANY
 1600 WALLETT RD.
 COLUMBUS, OHIO 43228
 FOR AMERITECH



ELEVATIONS		ACCT'G CLASS	4C
1060		SCALE:	1" = 20'
1055		Horizontal:	1" = 20'
1050		Vertical:	1" = 5'
1045		TWO WORKING DAYS BEFORE YOU DIG CALL TOLL FREE 800-362-2764	
1040		IN EFFECT	
		ORDER NO.	P F
		EASEMENT DATA	
		VOLUME	PAGE RECORDED
		Amertech	
		DISTRICT	OUTLYING CITIES
		ORDER NO.	5160835
		COUNTY	FAYETTE
		ACCOUNT AREA	L36204
		PREPARED BY	J. VERGILLIO
		TELEPHONE NO.	674-223-5708
		DATE	08/24/01
		SHEET NO.	12
		EXCHANGE	MDLCH04
		CENTRAL OFFICE	948
		ROUTE	
		PLATE NO.	

E:\WORK\ACQUISITION\AMERTEC\ENV\PROJECTS\10000000\35555\PLAN\RT35\1035.DWG (2001/08/24 09:54:57 AM) CL

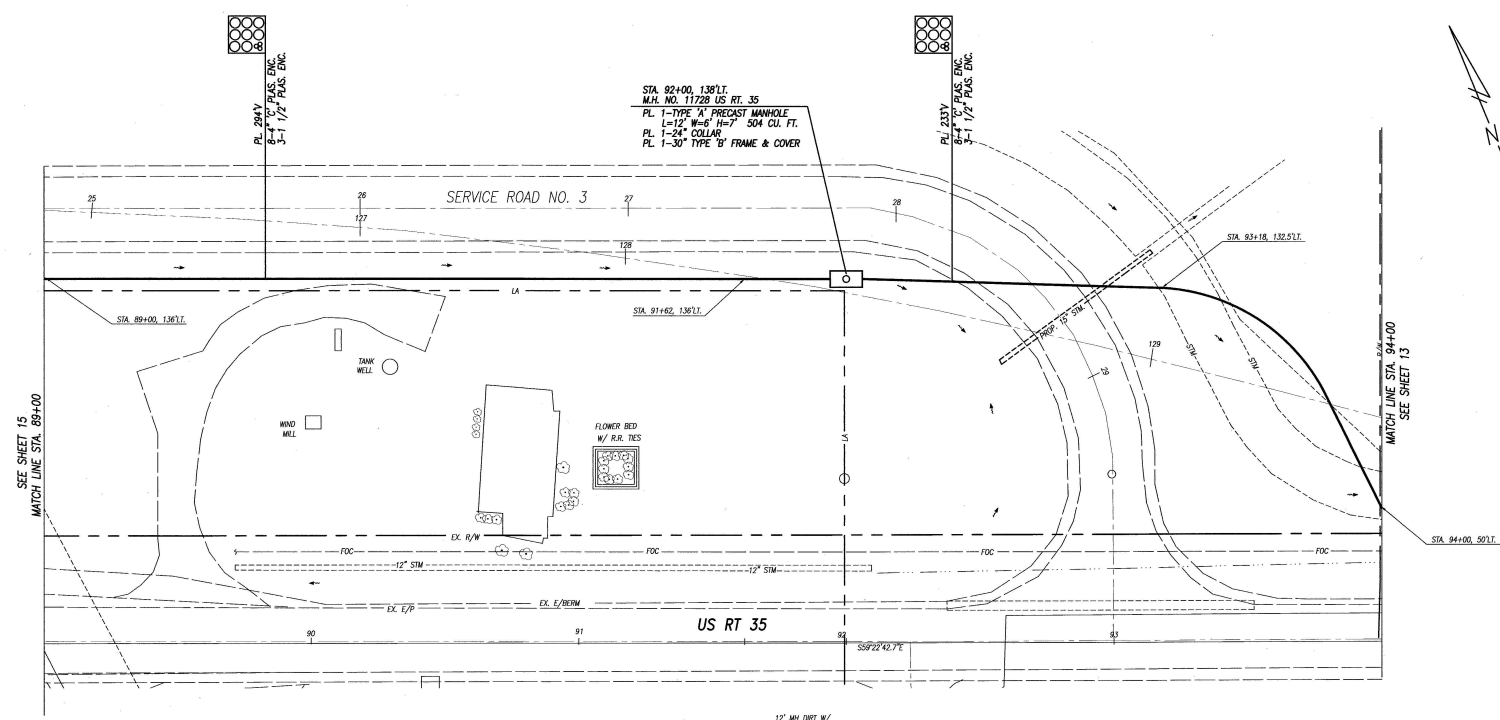
E:\HOME\ACADWORK\AMERITECH\DRAWING\PROJECTS\1040\1040\1040.DWG, 06/04/2009 09:56:02 AM, CL



BD ITEMS		38" GRASS	37" ASPHALT PAVEMENT	465" GRASS
ELEVATIONS		ELEVATIONS		
ACCTO CLASS		4C		
SCALE:		Horizontal: 1"=20'		
		Vertical: 1"=5'		
IN EFFECT		TWO WORKING DAYS BEFORE YOU DIG CALL TOLL FREE 800-362-2764		
ORDER NO.	P	F		
EASEMENT DATA				
VOLUME	PAGE	RECORDED		
DISTRICT OUTLYING CITIES		Ameritech		
PROJ. NO.	ORDER NO. 5762835			
COUNTY FAYETTE	ACCOUNT AREA L36304			
PREPARED BY J. VERGALLITO	TELEPHONE NO. 614-223-5708			
DATE 05/05/01	TOTAL SHEETS	SHEET NO. 13		
DRAWING: MDA/DMH	CENTRAL OFFICE: 948			
ROUTE	PLATE NO.			



- 4C PL 587V 9 DUCT RUN
- 4C PL 1 MANHOLE ENC.
- RESTORAL
- 4C ADDITIONAL COST



SEE SHEET 15
MATCH LINE STA. 89+00

MATCH LINE STA. 94+00
SEE SHEET 16

STA. 92+00, 138'LT.
M.H. NO. 11728 US RT. 35
PL 1-TYPE 'A' PRECAST MANHOLE
1-12" W/4" 11/2" 5/8" CUL. FT.
PL 1-24" COLLAR
PL 1-30" TYPE 'B' FRAME & COVER

PL 294V
12" PLAS. ENC.
3-1 1/2" PLAS. ENC.

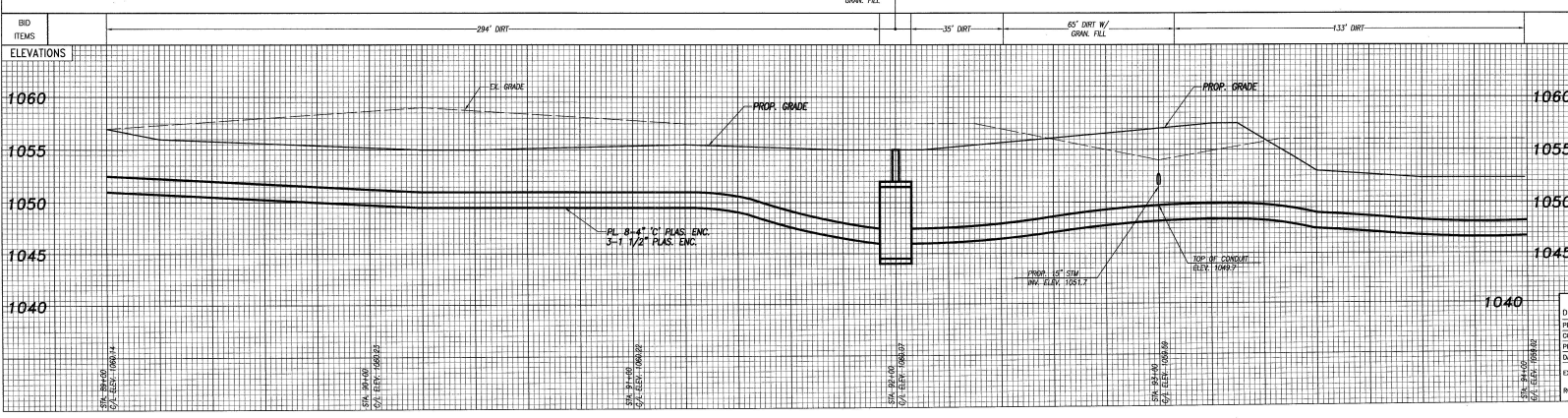
PL 233V
12" PLAS. ENC.
3-1 1/2" PLAS. ENC.

BENCH MARK IR 22
STA. 89+19.24'VT.
IRON PIN WITH CAP
ELEV. 1059.00

BENCH MARK IR 23
STA. 95+58.21'VT.
IRON PIN WITH CAP
ELEV. 1056.70

- CONSTRUCTION NOTES:**
1. ALL UTILITIES SHOWN ON THIS PLAN ARE APPROXIMATE LOCATIONS ONLY. CONTRACTOR MUST FIELD VERIFY ACTUAL LOCATIONS, DEPTHS, AND SIZES OF EXISTING UTILITIES IN VICINITY OF WORK PRIOR TO ANY EXCAVATION.
 2. ADJUST FRAME & COVER TO FINAL GRADE AS NEEDED.

PLAN PREPARED BY:
FISHER COMPANY
1600 WALCOTT RD
COLUMBUS, OHIO 43228
FOR AMERITECH



ELEVATIONS

ACCT'G CLASS: 4C
SCALE: 1"=20'
Vertical: 1"=4'

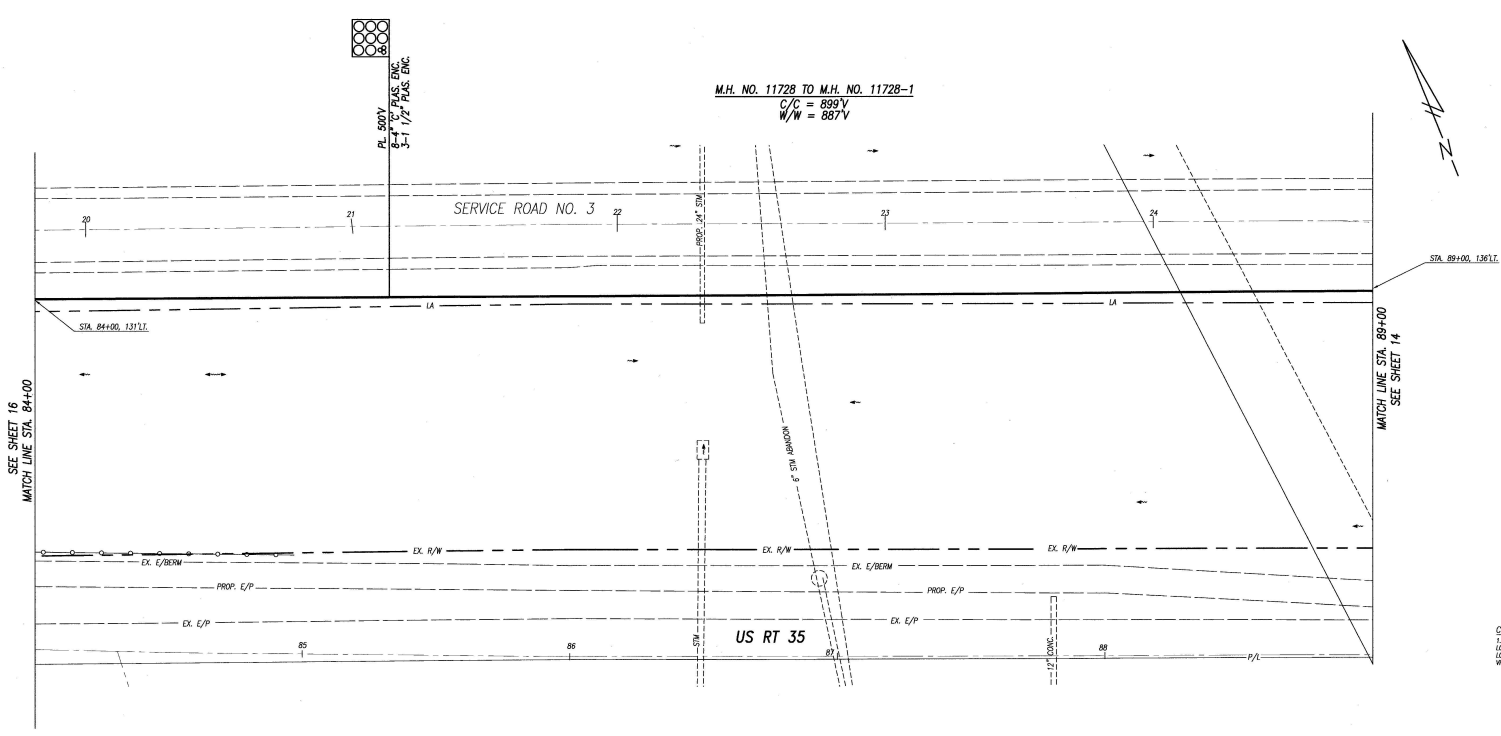
TWO WORKING DAYS BEFORE YOU DIG CALL TOLL FREE 800-362-2764

IN EFFECT
ORDER NO. _____ P. F.
DATE: _____

EASEMENT DATA
VOLUME: _____ PAGE: _____ RECORDED: _____

ameritech

DISTRICT OF COLUMBIA
PROJECT NO. 614-223-5708
ORDER NO. ST68006
COUNTY FACETTE ACCOUNT AREA: L&SD04
PREPARED BY J. VERGALLITO TELEPHONE NO. 614-223-5708
DATE 06/04/01 TOT. SHEETS: _____ SHEET NO. 14
EXCHANGE MIDDLEBURY CENTRAL OFFICE: 848
ROUTE _____ PLATE NO. _____



- 4C PL. 500V 9 DUCT RUN
- 4C RESTORAL
- 4C ADDITIONAL COST

STA. 89+00.1361'L

MATCH LINE STA. 89+00
SEE SHEET 14

SEE SHEET 16
MATCH LINE STA. 84+00

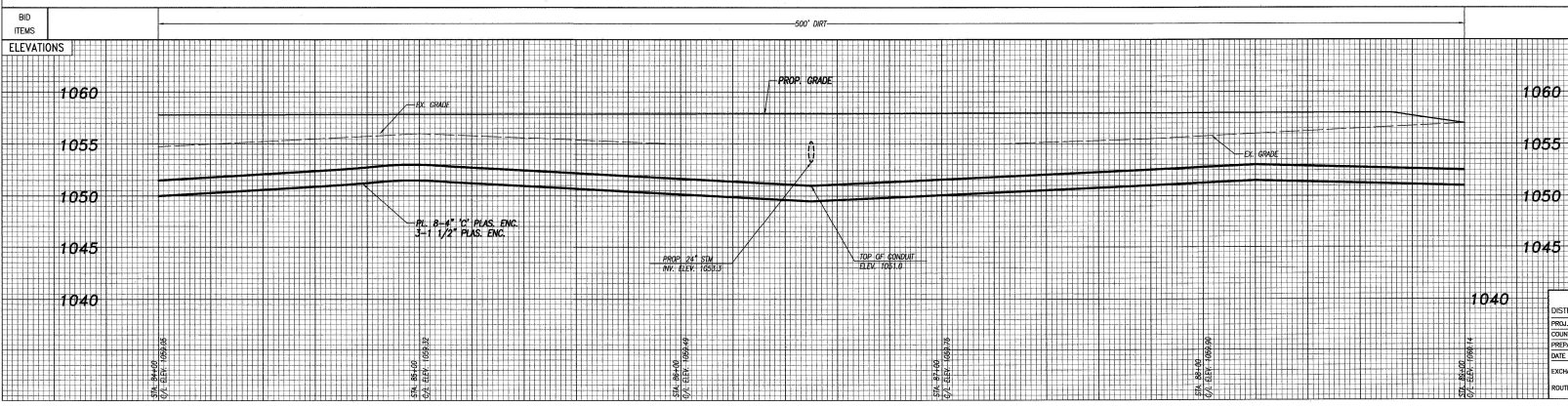
M.H. NO. 11728 TO M.H. NO. 11728-1
C/C = 899'V
W/W = 887'V

PL. 500V
PL. 10\"/>

BENCH MARK TR 22
STA 89+18.24'RT
IRON PIN WITH CAP
ELEV. 1058.02

CONSTRUCTION NOTES:
1. ALL UTILITIES SHOWN ON THIS PLAN ARE APPROXIMATE. LOCATIONS ONLY. CONTRACTOR MUST FIELD VERIFY ACTUAL LOCATIONS, DEPTHS AND SIZES OF EXISTING UTILITIES IN VICINITY OF WORK PRIOR TO ANY EXCAVATION.

PLAN PREPARED BY:
FISKE COMPANY
1600 WALLETT RD.
COLUMBUS, OHIO 43228
FOR AMERITECH



ELEVATIONS	
1060	1060
1055	1055
1050	1050
1045	1045
1040	1040

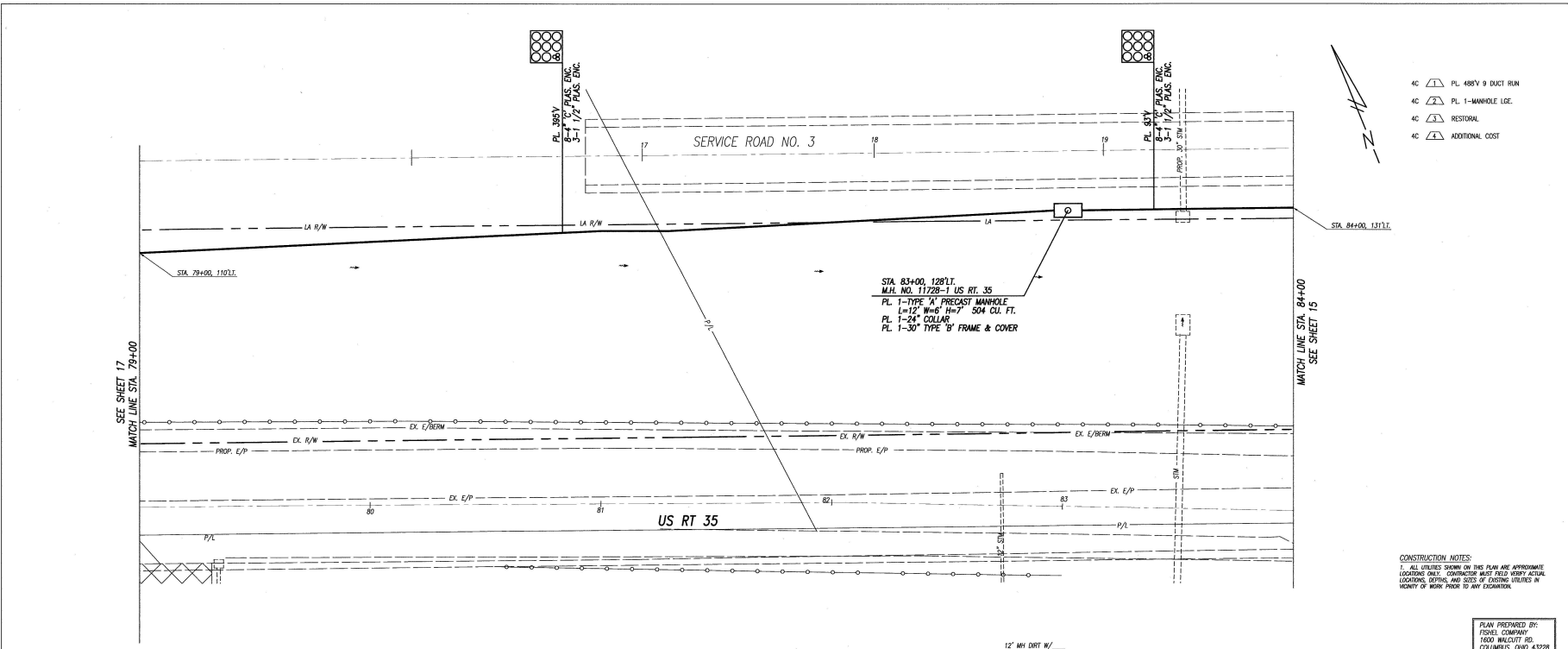
ACCT'G CLASS 4C
SCALE: Horizontal: 1"=20'
Vertical: 1"=5'
 TWO WORKING DAYS BEFORE YOU DIG CALL TOLL FREE 800-362-2764

IN EFFECT		
ORDER NO.	P	F

EASEMENT DATA
VOLUME PAGE RECORDED

Ameritech

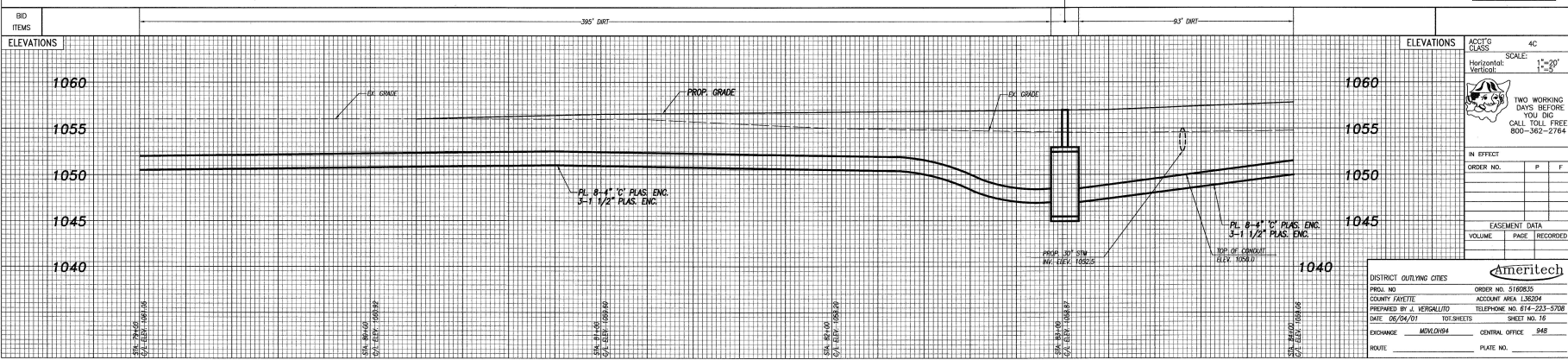
DISTRICT OULIVING CITIES
PROJ. NO. 516035
COUNTY FAYETTE
PREPARED BY J. VENGALLIO
DATE 06/24/02 101 SHEETS
EXCHANGE MOVALOH94 CENTRAL OFFICE 948
ROUTE PLATE NO.



- 4C PL. 488V 9 DUCT RUN
- 4C PL. 1-MANHOLE L.C.E.
- RESTORAL
- 4C ADDITIONAL COST

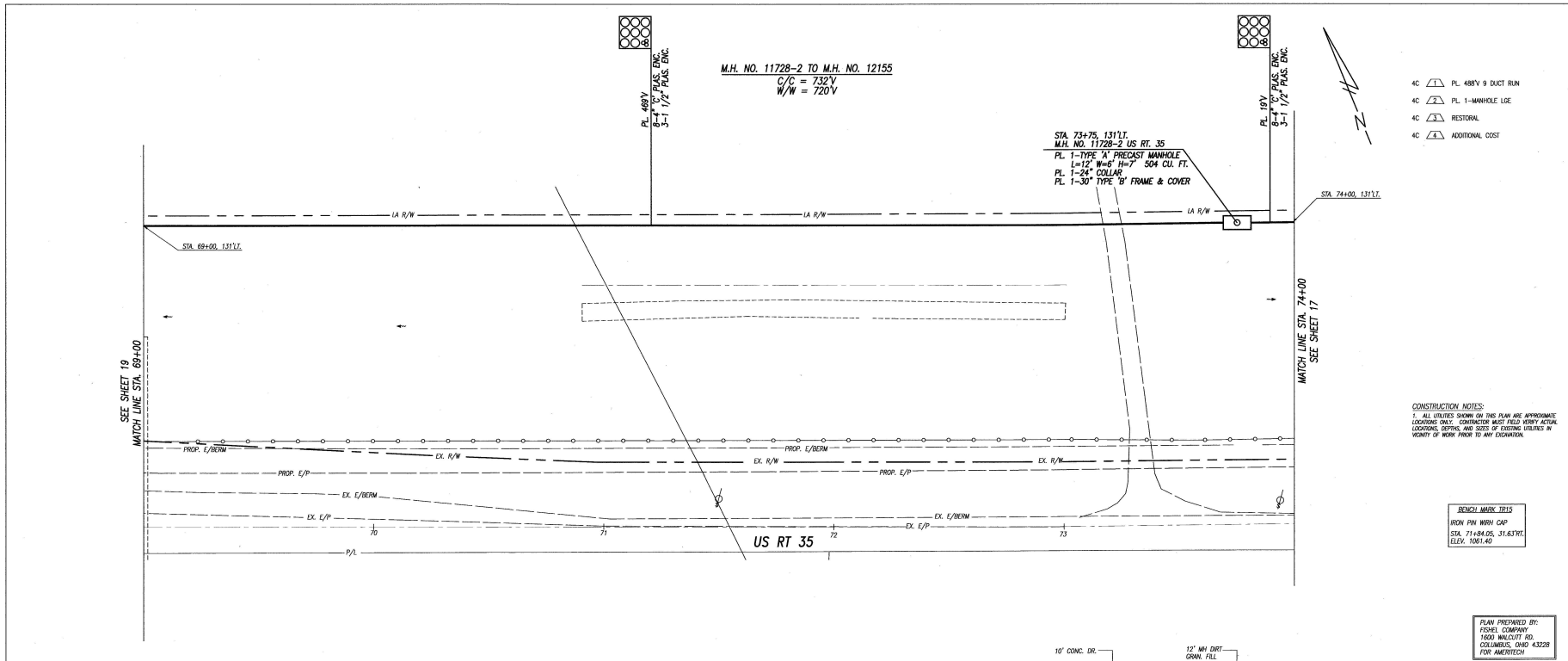
CONSTRUCTION NOTES:
 7. ALL UTILITIES SHOWN ON THIS PLAN ARE APPROXIMATE.
 LOCATING DATA. CONTRACTORS MUST VERIFY ACTUAL
 LOCATION, DEPTHS AND SIZES OF EXISTING UTILITIES IN
 VICINITY OF WORK PRIOR TO ANY EXCAVATION.

PLAN PREPARED BY:
 FISHER COMPANY
 1600 WALCOTT RD.
 COLUMBUS, OHIO 43228
 FOR AMERITECH



E:\HARD\ACAD\DWG\AMERITECH\ENR\050000\050000\050000.DWG, 06/24/01 09:59:08 AM, CL

E:\WORK\LOADING\AMERITECH\1600\1600.DWG: 4/23/01 10:50:38 AM: 06/04/01 10:50:38 AM: CL

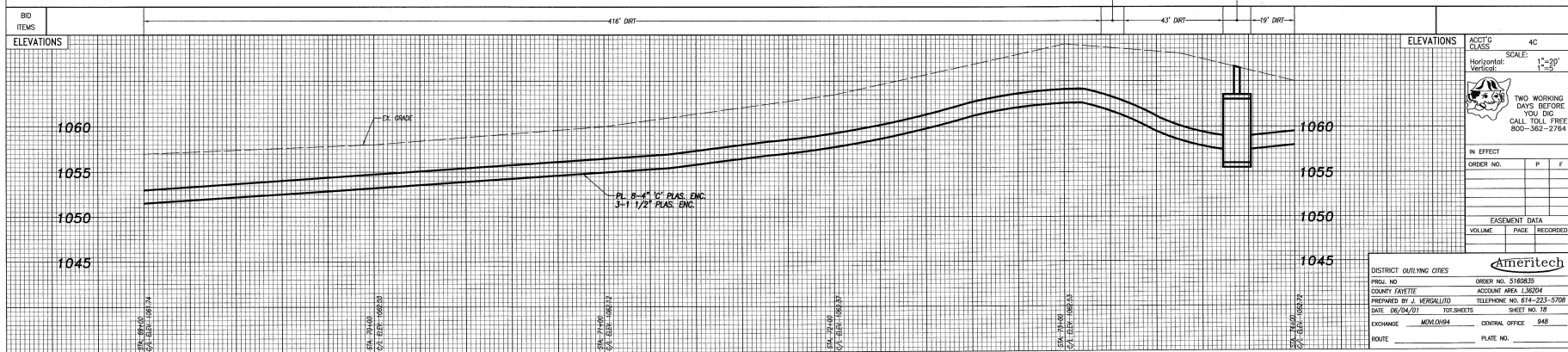


- 4C □ PL. 488V 9 DUCT RUN
- 4C □ PL. 1-MANHOLE LGE
- 4C □ RESTORIAL
- 4C □ ADDITIONAL COST

CONSTRUCTION NOTES:
1. ALL UTILITIES SHOWN ON THIS PLAN ARE APPROXIMATE LOCATIONS ONLY. CONTRACTOR MUST FIELD VERIFY ACTUAL LOCATIONS, DEPTHS, AND SIZES OF EXISTING UTILITIES IN VICINITY OF WORK PRIOR TO ANY EXCAVATION.

BENCH MARK 1015
FROM 1991 MHW CAP
STA. 71+84.05, 31.63WY
ELEV. 1061.42

PLAN PREPARED BY:
FOSREL COMPANY
1600 WALCOTT RD.
COLUMBUS, OHIO 43228
FOR AMERITECH



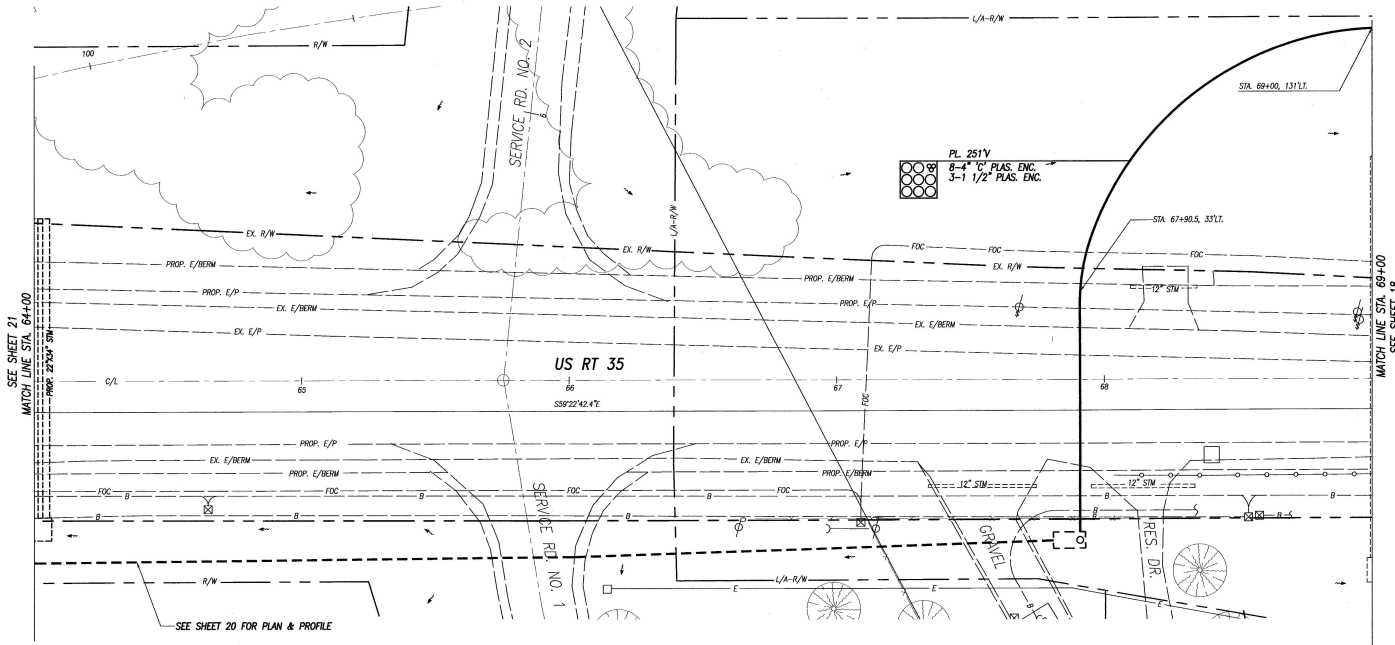
TWO WORKING DAYS BEFORE YOU DIG
CALL TOLL FREE 800-362-2764

Ameritech
DISTRICT OULYING CITIES
PROJ. NO ORDER NO. 5160835
COUNTY FAYETTE ACCOUNT AREA 1.36204
PREPARED BY J. VERGALLI/O TELEPHONE NO. 614-223-5706
DATE 06/04/01 101-SHEETS SHEET NO. 18
EXCHANGE MEMPHIS94 CENTRAL OFFICE 948
ROUTE PLATE NO.

RECORD NOTE: ??



- 4C PL. 251V 9 DUCT RUN
- 4C RESTORAL
- 4C ADDITIONAL COST



SEE SHEET 21
MATCH LINE STA. 64+00
PROJECT 25747-SM

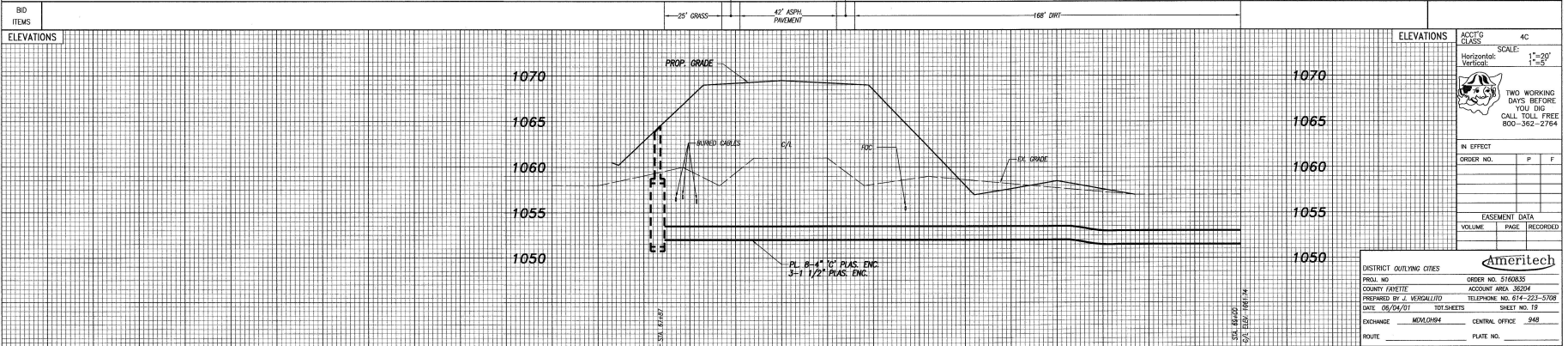
MATCH LINE STA. 69+00
SEE SHEET 18

SEE SHEET 20 FOR PLAN & PROFILE

BENCH MARK, TD. 14
IRON PIN WITH CAP
STA. 64+75, 137V.
ELEV. 1060.16

CONSTRUCTION NOTES:
1. ALL UTILITIES SHOWN ON THIS PLAN ARE APPROXIMATE LOCATIONS ONLY. CONTRACTOR MUST FIELD VERIFY ACTUAL LOCATIONS, DEPTHS, AND SIZES OF EXISTING UTILITIES IN VICINITY OF WORK PRIOR TO ANY EXCAVATION.

PLAN PREPARED BY:
FISHEL COMPANY
1600 MALETT RD.
COLUMBUS, INDIAN 43228
FOR AMERITECH



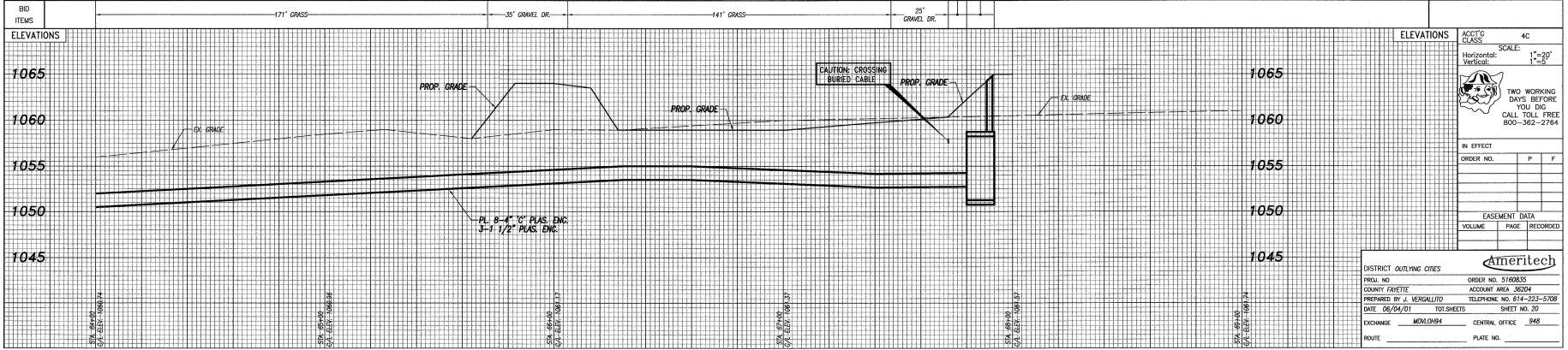
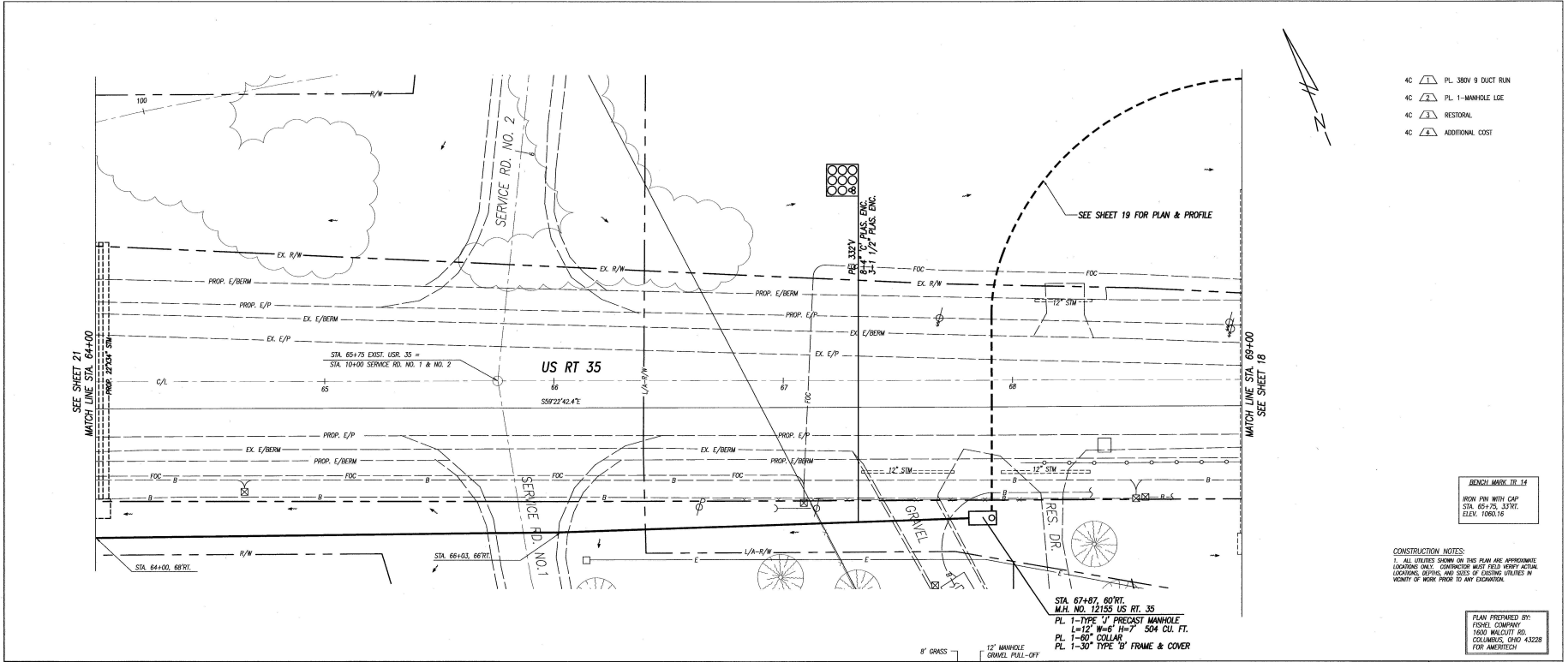
ACCTO CLASS 4C
SCALE: Horizontal: 1"=20' Vertical: 1"=5'
 TWO WORKING DAYS BEFORE YOU DIG CALL TOLL FREE 800-362-2764

IN EFFECT		
ORDER NO.	P	F
EASEMENT DATA		
VOLUME	PAGE	RECORDED

DISTRICT OULIVING CITIES
 PROJ. NO. _____ ORDER NO. 5160835
 COUNTY FAYETTE COUNTY AREA 36204
 PREPARED BY J. WICKALL/ROD TELEPHONE NO. 614-221-5708
 DATE 06/04/01 101 SHEETS SHEET NO. 12
 EXCHANGE MDALOH94 CENTRAL OFFICE 948
 ROUTE _____ PLATE NO. _____

E:\WWW\SLADDING\AMERITECH\ENR\PROJECTS\INDIANA\35252-CA\151\PLAN\AMR351.DWG, 01/04/2001 10:25:26, ALC, CL

E:\WORK\ACAD\DWG\CADD\TELECOM\PROJ\65535-44\1813\DWG\PLAN\65535-44-1813.DWG, 04/14/2010 10:52:32 AM, CL



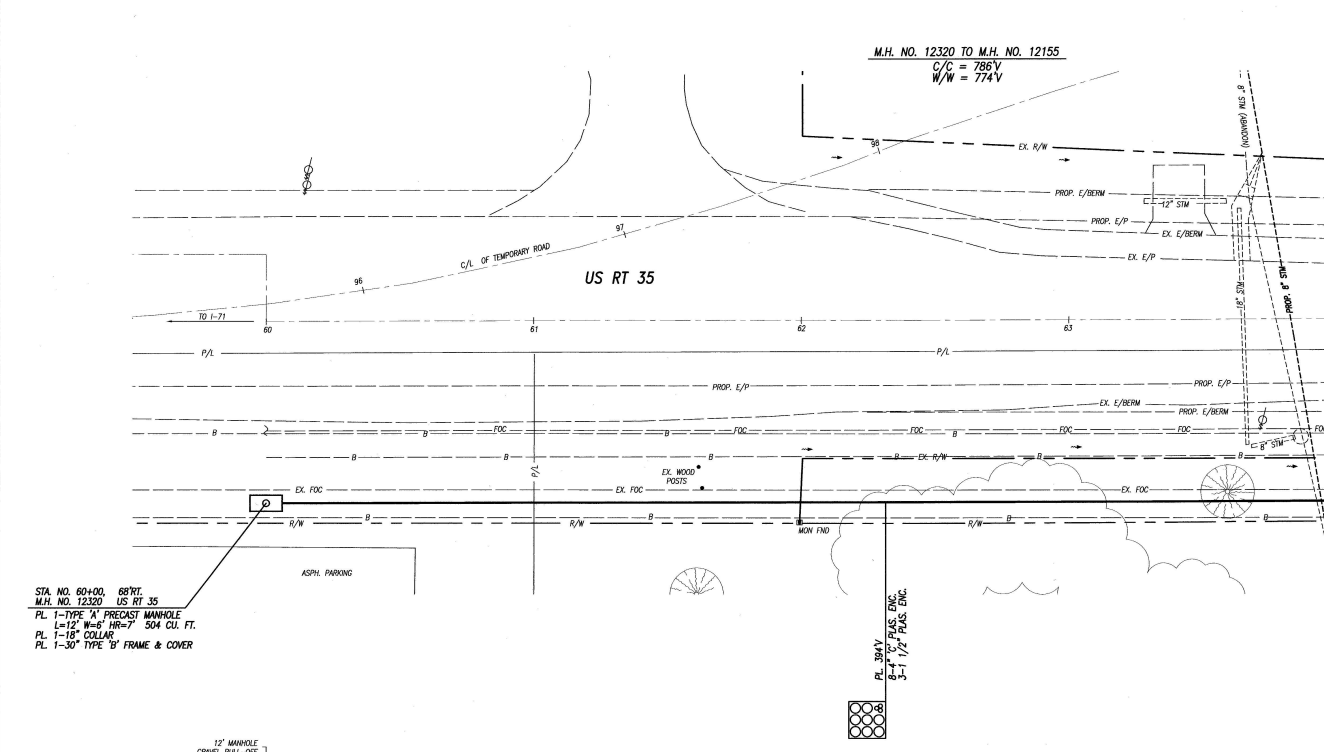
- 4C PL 300V 9 DUCT RUN
- 4C PL 1-MANHOLE LGE
- 4C RESTORAL
- 4C ADDITIONAL COST

BENCH MARK TM 14
 IRON PIN WITH CAP
 STA 65+75, 53 RT.
 ELEV. 1050.15

CONSTRUCTION NOTES:
 1. ALL UTILITIES SHOWN ON THIS PLAN ARE APPROXIMATE LOCATIONS ONLY. CONSTRUCTION MUST FIELD VERIFY ACTUAL LOCATIONS, DEPTHS AND SIZES BY EXCAVING UTILITIES IN VICINITY OF WORK PRIOR TO ANY EXCAVATION.

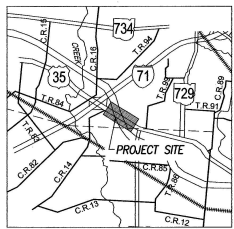
PLAN PREPARED BY:
 FISHER COMPANY
 1000 WALCUTT RD.
 COLUMBUS, OHIO 43228
 FOR AMERITECH

ELEVATIONS		ACCTO CLASS	4C
		SCALE:	Horizontal: 1"=30'
		Vertical:	1"=5'
TWO WORKING DAYS BEFORE YOU DIG CALL TOLL FREE 800-362-2764			
IN EFFECT			
ORDER NO.	P	F	
EASEMENT DATA			
VOLUME	PAID	RECORDED	
DISTRICT OULTING CITIES PROJ. NO. ORDER NO. 5160835 COUNTY FAYETTE ACCOUNT AREA 36204 PREPARED BY J. VERRILLI/JD TELEPHONE NO. 614-223-2708 DATE 08/04/07 TOT SHEETS SHEET NO. 20 EXCHANGER MIDDLESEX CENTRAL OFFICE 548 ROUTE PLATE NO.			



M.H. NO. 12320 TO M.H. NO. 12155
 C/C = 786V
 W/W = 774V

- 4C (Symbol) FL 394V 9 DUCT RUN
- 4C (Symbol) PL 1-MANHOLE LGE
- 4C (Symbol) RESTORAL
- 4C (Symbol) ADDITIONAL COST



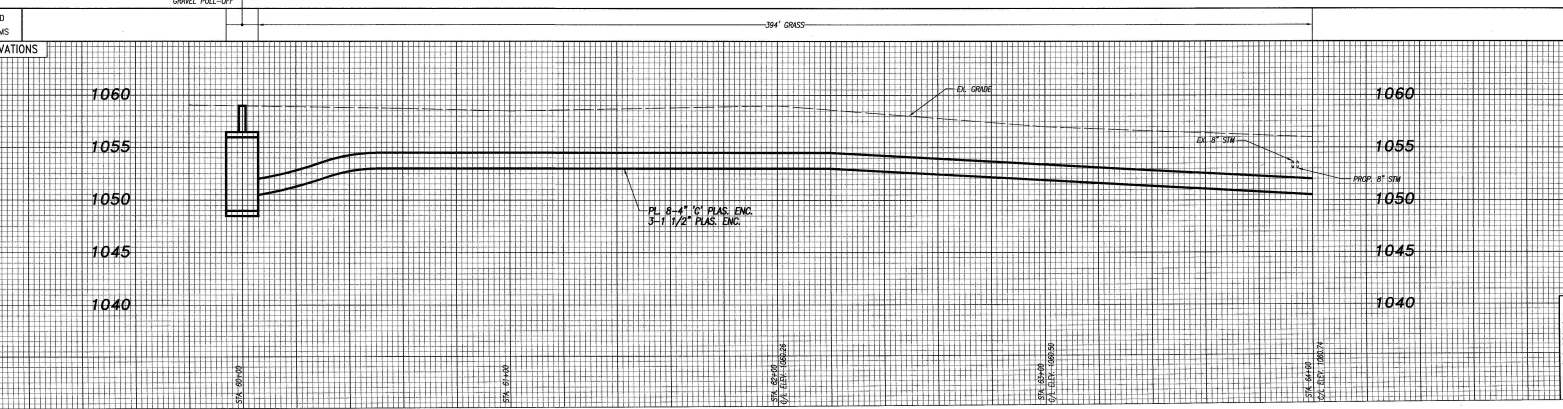
LOCATION MAP
NOT TO SCALE

STA. NO. 60+00. 68\"/>

- CONSTRUCTION NOTES:**
- 1. ALL UTILITIES SHOWN ON THIS PLAN ARE APPROXIMATE.
 - LOCATIONS ONLY. CONTRACTOR MUST FIELD VERIFY ACTUAL LOCATIONS, DEPTHS AND SIZES OF EXISTING UTILITIES IN VICINITY OF WORK PRIOR TO ANY EXCAVATION.

BENCH MARK TR 13
 IRON PIN WITH CAP
 STA. 59+81.31 TRI.
 ELEV. 1055.78

PLAN PREPARED BY:
 FISHER COMPANY
 1600 WALCUTT RD.
 COLUMBUS, OHIO 43228
 FOR AMERITECH



ELEVATIONS		ACCT'G CLASS	
Horizontal:	1"=20'	4C	
Vertical:	1"=5'	SCALE:	
TWO WORKING DAYS BEFORE YOU DIG CALL TOLL FREE 800-362-2764			
IN EFFECT ORDER NO. P F			
EASEMENT DATA VOLUME PAGE RECORDED			
DISTRICT OUTLYING CITIES		Ameritech	
PROJ. NO. 3160835	ORDER NO. 3160835	ROUTE: PLATE NO.	
COUNTY FAYETTE	ACCOUNT AREA 36204		
PREPARED BY: J. VERCALUITO	TELEPHONE NO. 614-293-5708		
DATE: 06/04/01	TOT SHEETS: 27		
EXCHANGE: MEVLOCH04	CENTRAL OFFICE: 948		