

MH 11280
 MANHOLE (2001) 4C
 12 X 6 X 7 = 504

L36006 MDLVOHR0002
 MRMPF*25 (2001) 5C
 RPTR 2 CASE 2

L36006 MDLVOHR0002
 MRMPF*25 (2001) 5C
 RPTR 2 CASE 1

COORDINATOR:
 KEN FROST
 937-244-7508

BEFORE YOU DIG!
 2 Days Prior
 Call 811

PROJECT # A021JCR		DATE SVC REQ'D 07/26/2021
DA 1112	GEO LOC L36204	CLLI mdvlohr94
PRIMARY ENGR.: MINSER, JASON		
ENGR. ID: JM9792	PERMIT REQ'D.	N
PHONE #: 9372967066	PRINT 1 OF 3	

845C
1 MW CWA ONLY INSPECTOR

BLUEGRASS BLVD

5 (PPA) 845C
5BQ2MT-048

8 (PPA) 45C
ANMW-50

FO HH 8200-1
HH-30X48X36 (2021) 4C
2.5 X 4 X 3 = 30

TO PRINT 3

(PPA) 45C 2165'
ANMW-50

DUCT# 4654
END# 4710
Fiber

6 (PPA) 845C 2215'
5BQ2MT-024

* LEAVE SLACK ON THE COPPER CABLE, TO
JUST BELOW THE TOP OF THE NEW PED,
BUT THE PED STILL NEEDS TO CLOSE.

15875 P
15868 end
CMPH-7500

OLD US-35

*TURN 4" UP IN
CMPH-7500
* SEAL ALL PIPES
IN CMPH-7500

17670 P
17664 EV

4 100' 1-PC-4-C (PPA) 845C

DUCT# 5234
END# 5270
Fiber

TO CO
TO PRINT 1

P.11281
45-2 (2021) 1C
0

(2001) 45C 820'
ANMW-100

* PULL A NEW MULE TAPE IN WITH THE
NEW FIBER AND CABLE THROUGHOUT
THE FO STRUCTURES.

OH-729

MH 11280
MANHOLE (2001) 4C
12 X 6 X 7 = 504

S F 11280 U S RTE 35 NW
RA (2001) 45C

**BEFORE YOU
DIG!
2 Days Prior
Call 811**

PROJECT # A021JCR		DATE SVC REQ'D 07/26/2021	
DA 1112	GEO LOC L36204	CLLI mdvlo94	
PRIMARY ENGR.: MINSER, JASON			
ENGR. ID: JM9792		PERMIT REQ'D. N	
PHONE #: 9372967066		PRINT 2 OF 3	

M.H. NO. 11280 TO M.H. NO. 11330
 C/SUB = 985V
 W/SUB = 953V

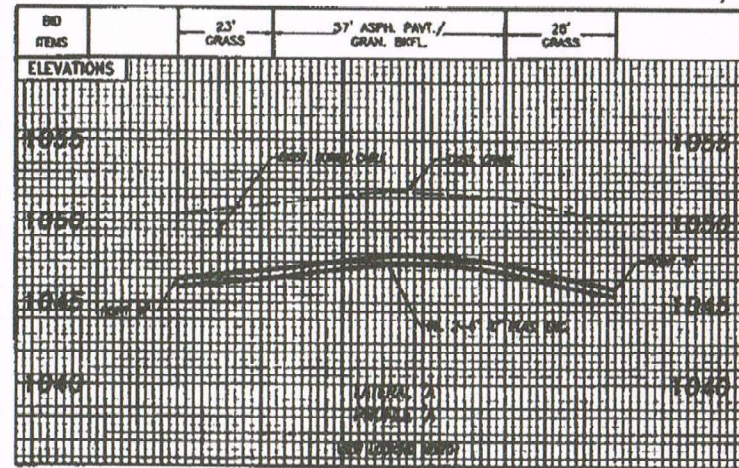
LATERAL 1"
 M.H. NO. 11280 TO STUB @ PT. 7"
 C/SUB = 184V
 W/SUB = 178V

- 4C PLACE 3/4" V 11 DUCT RUN
- 4C PLACE 3/4" V 9 DUCT RUN
- 4C PLACE 3/4" V 8 DUCT RUN
- 4C BOTTOM
- 4C ADDITIONAL COST

SEE SHEET 12
 MATCH LINE STA. 174+00

EX. U.S. 35

SEE SHEET 10
 MATCH LINE STA. 181+00



4C 48' V
 3-1 1/2" PUC CONC. ENC.

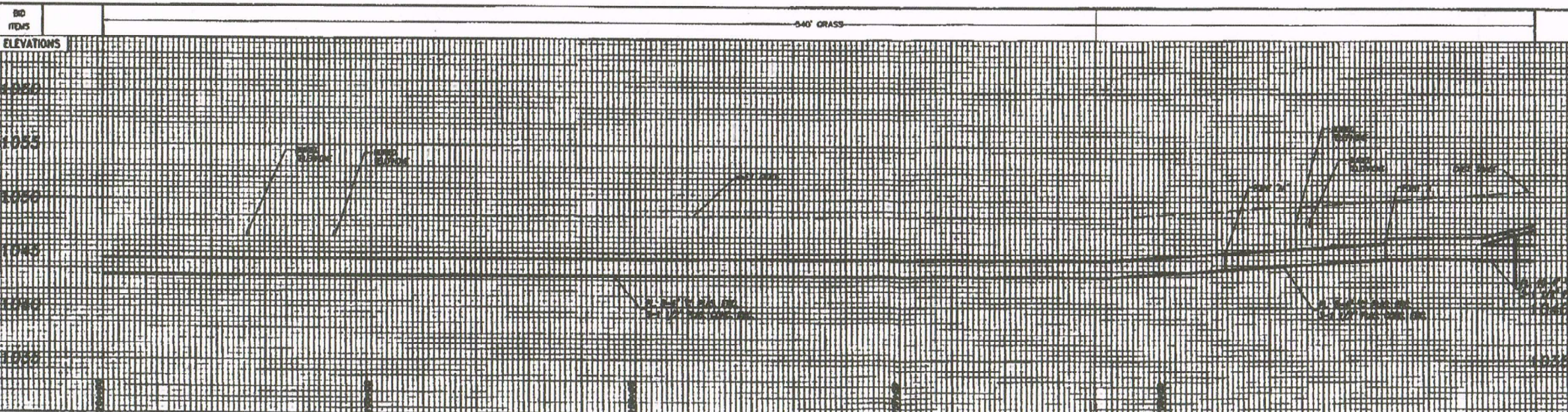
4C 80' V
 3-1 1/2" PUC CONC. ENC.

4C 80' V
 3-1 1/2" PUC CONC. ENC.

CONSTRUCTION NOTES:
 1. ALL WORK SHOWN ON THIS PLAN IS APPROXIMATE AND FOR INFORMATION ONLY. CONTRACTOR MUST FIELD VERIFY ACTUAL CONDITIONS, DEPTHS, AND SIZES OF EXISTING UTILITIES AT RISK OF THEIR PACE TO ANY OBSTRUCTION.

DATE: 08/11/09
 BY: J. M. [unreadable]
 FOR: AMERITECH

PLAN PREPARED BY:
 FISHER COMPANY
 1600 BELMONT RD.
 COLUMBUS, OHIO 43228
 FOR AMERITECH



ACT'S CLASS: 4C
 SCALE: 1"=30'
 HORIZONTAL: 1"=30'
 VERTICAL: 1"=3'

TWO WORKING DAYS BEFORE YOU DIG
 CALL TOLL FREE 800-362-2704

IN EFFECT

ORDER NO.	P	T

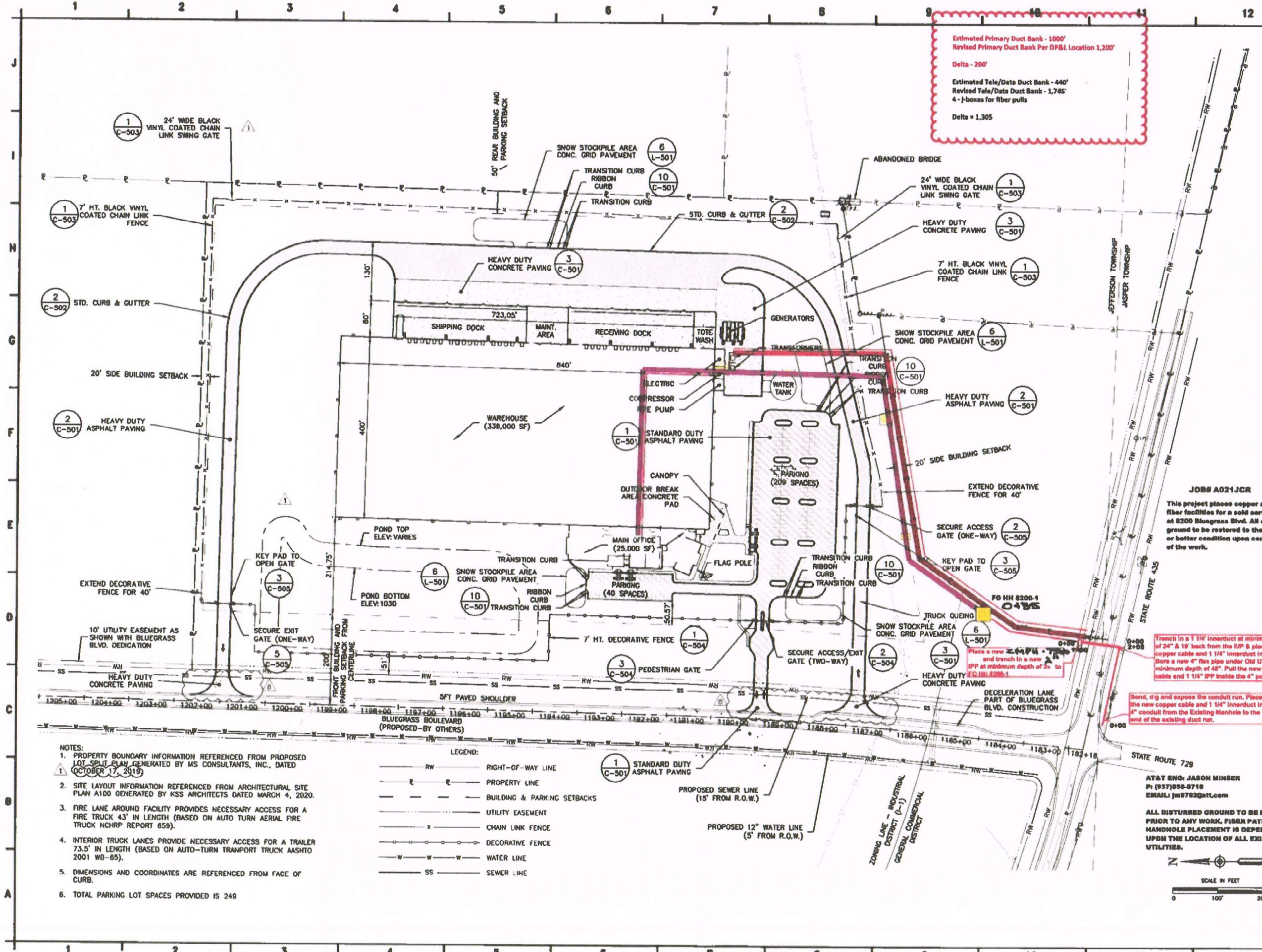
EASEMENT DATA		
VOLUME	PAGE	RECORDED

Ameritech

DISTRICT: OURLING CREEK
 PROJ. NO. 518885
 COUNTY: FAYETTE
 ACCOUNT AREA: L28209
 PREPARED BY: J. M. [unreadable]
 TELEPHONE NO.: 223-3769
 DATE: 08/04/09
 SHEET NO.: 11

EXCHANGE: MORGANTHAU
 CENTRAL OFFICE: 288
 ROUTE: [unreadable]
 PLATE NO.: [unreadable]

E:\projects\109000\109000.dwg



Estimated Primary Duct Bank - 1000'
 Revised Primary Duct Bank Per DP&L Location 1,200'
 Delta - 200'
 Estimated Tele/Data Duct Bank - 440'
 Revised Tele/Data Duct Bank - 1,745'
 4 - J-boxes for fiber pulls
 Delta = 1,305

1
 C-503
 24' WIDE BLACK VINYL COATED CHAIN LINK SWING GATE

1
 C-503
 7' HT. BLACK VINYL COATED CHAIN LINK FENCE

2
 C-502
 STD. CURB & GUTTER

2
 C-501
 HEAVY DUTY ASPHALT PAVING

6
 L-501
 SNOW STOCKPILE AREA CONC. GRID PAVEMENT

10
 C-501
 TRANSITION CURB

3
 C-501
 HEAVY DUTY CONCRETE PAVING

1
 C-503
 24' WIDE BLACK VINYL COATED CHAIN LINK SWING GATE

3
 C-501
 HEAVY DUTY CONCRETE PAVING

1
 C-503
 7' HT. BLACK VINYL COATED CHAIN LINK FENCE

6
 L-501
 SNOW STOCKPILE AREA CONC. GRID PAVEMENT

10
 C-501
 TRANSITION CURB

2
 C-501
 HEAVY DUTY ASPHALT PAVING

1
 C-501
 STANDARD DUTY ASPHALT PAVING

10
 C-501
 TRANSITION CURB

2
 C-501
 HEAVY DUTY ASPHALT PAVING

2
 C-505
 SECURE ACCESS GATE (ONE-WAY)

3
 C-505
 KEY PAD TO OPEN GATE

6
 L-501
 SNOW STOCKPILE AREA CONC. GRID PAVEMENT

10
 C-501
 TRANSITION CURB

10
 C-501
 TRANSITION CURB

1
 C-504
 7' HT. DECORATIVE FENCE

3
 C-504
 PEDESTRIAN GATE

10
 C-501
 TRANSITION CURB

10
 C-501
 TRANSITION CURB

6
 L-501
 SNOW STOCKPILE AREA CONC. GRID PAVEMENT

3
 C-501
 HEAVY DUTY CONCRETE PAVING

3
 C-501
 HEAVY DUTY CONCRETE PAVING

3
 C-501
 HEAVY DUTY CONCRETE PAVING

3
 C-501
 HEAVY DUTY CONCRETE PAVING

3
 C-501
 HEAVY DUTY CONCRETE PAVING

3
 C-501
 HEAVY DUTY CONCRETE PAVING

3
 C-501
 HEAVY DUTY CONCRETE PAVING

3
 C-501
 HEAVY DUTY CONCRETE PAVING

3
 C-501
 HEAVY DUTY CONCRETE PAVING

- NOTES:
- PROPERTY BOUNDARY INFORMATION REFERENCED FROM PROPOSED LOT SPLIT PLAN GENERATED BY MS CONSULTANTS, INC., DATED OCTOBER 17, 2019.
 - SITE LAYOUT INFORMATION REFERENCED FROM ARCHITECTURAL SITE PLAN A100 GENERATED BY KSS ARCHITECTS DATED MARCH 4, 2020.
 - FIRE LANE AROUND FACILITY PROVIDES NECESSARY ACCESS FOR A FIRE TRUCK 43' IN LENGTH (BASED ON AUTO TURN AERIAL FIRE TRUCK NCHRP REPORT 659).
 - INTERIOR TRUCK LANES PROVIDE NECESSARY ACCESS FOR A TRAILER 73.5' IN LENGTH (BASED ON AUTO-TURN TRANSPORT TRUCK AASHTO 2001 WB-65).
 - DIMENSIONS AND COORDINATES ARE REFERENCED FROM FACE OF CURB.
 - TOTAL PARKING LOT SPACES PROVIDED IS 249

- LEGEND:
- RW RIGHT-OF-WAY LINE
 - P PROPERTY LINE
 - BUILDING & PARKING SETBACKS
 - UTILITY EASEMENT
 - X CHAIN LINK FENCE
 - DECORATIVE FENCE
 - W WATER LINE
 - SS SEWER LINE

1
 C-501
 STANDARD DUTY ASPHALT PAVING

PROPOSED SEWER LINE (15' FROM R.O.W.)

PROPOSED 12" WATER LINE (5' FROM R.O.W.)

ZONING LINE - INDUSTRIAL DISTRICT (I-1)

GENERAL COMMERCIAL DISTRICT

JOB# A021JCR
 This project places copper and fiber facilities for a solid service at 8200 Bluegrass Blvd. All disturbed ground to be restored to the original or better condition upon completion of the work.

Trench in a 1 1/4" innerduct at minimum depth of 24" & 18" back from the E/P & place the new copper cable and 1 1/4" innerduct in trench. Bore a new 4" flex pipe under Old US-35 at minimum depth of 48". Pull the new copper cable and 1 1/4" IPP inside the 4" poly pipe.

Band, dig and expose the conduit run. Place the new copper cable and 1 1/4" innerduct in 4" conduit from the Existing Manhole to the end of the existing duct run.

wood.
 ENVIRONMENT & INFRASTRUCTURE SOLUTIONS, INC.
 1075 BIG SHANTY ROAD, NW
 SUITE 100
 KENNESAW, GA 30144
 TEL: (770) 421-3400



NOT VALID WITHOUT SIGNATURE AND DATE

PROJECT:
PROJECT ZEUS
 FAYETTE COUNTY, OHIO

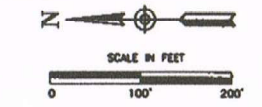
WOOD PROJECT No.
 6166-19-1165

NO	DATE	BY	CHECK BY
1	4/27/20	S.AGUDELO	M. ILC
8	7/02/20	S.AGUDELO	M. ILC

DESIGNED BY:	H. SOZA
DRAWN BY:	H. SOZA
CHECKED BY:	M. ILC
IN CHARGE:	S. AGUDELO
DATE:	APRIL 2, 2020

SHEET TITLE:
SITE AND LAYOUT PLAN

SHEET NUMBER:	REV. #
C-102	8
SHEET 3 OF 46 SHEETS	



PCO-054 Received 07/02/2020