

G:\ProjectData\2021\FRA\104977\_FRA-270-6.10\Design\Structures\FRA270\_0610C\_Sheets\270\_0610CE0001.dgn 1/12/2022 6:54:49 PM jenniferm

ITEM	EXT.	PARTICIPATION		TOTAL	UNIT	DESCRIPTION	ABUT.	PIERS	SUPER.	GEN.	SHEET NO.
		01/IMS/BR	02/IMS/BR								
BRIDGE NO. FRA-270-0617											
202	11203	LS		LS		PORTIONS OF STRUCTURE REMOVED , OVER 20 FOOT SPAN, AS PER PLAN				LS	2
202	22900	214		214	SY	APPROACH SLAB REMOVED				214	
202	23500	1,906		1,906	SY	WEARING COURSE REMOVED			1,906		
503	11100	LS		LS		COFFERDAMS AND EXCAVATION BRACING			LS		
503	21300	LS		LS		UNCLASSIFIED EXCAVATION				LS	
509	10000	131,593		131,593	POUND	EPOXY COATED REINFORCING STEEL	10,497		121,096		
509	30020	4,791		4,791	FT	NO. 4 GFRP DEFORMED BARS			4,791		
510	10000	376		376	EACH	DOWEL HOLES WITH NONSHRINK, NONMETALLIC GROUT	376				
511	33500	2		2	EACH	SEMI-INTEGRAL DIAPHRAGM GUIDE	2				
511	34412	65		65	CY	CLASS OC2 CONCRETE WITH QC/OA, SUPERSTRUCTURE			65		
511	34446	517		517	CY	CLASS OC2 CONCRETE WITH QC/OA, BRIDGE DECK			517		
511	34450	48		48	CY	CLASS OC2 CONCRETE WITH QC/OA, BRIDGE DECK (PARAPET)			48		
511	44112	17		17	CY	CLASS OC1 CONCRETE WITH QC/OA, ABUTMENT NOT INCLUDING FOOTING	17				
512	10100	1,019	289	1,308	SY	SEALING OF CONCRETE SURFACES (EPOXY-URETHANE)	108	138	1,062		
512	33000	64		64	SY	TYPE 2 WATERPROOFING	64				
512	74000	302		302	SY	REMOVAL OF EXISTING COATINGS FROM CONCRETE SURFACES	164	138			
513	10001	LS		LS		STRUCTURAL STEEL MEMBERS, LEVEL UP, AS PER PLAN			LS		2
513	20000	4,158		4,158	EACH	WELDED STUD SHEAR CONNECTORS			4,158		
514	27700	214		214	SF	FIELD PAINTING MISC.: BEARING STIFFENERS			214		
516	10010	102		102	FT	ARMORLESS PREFORMED JOINT SEAL				102	
516	13900	114		114	SF	2" PREFORMED EXPANSION JOINT FILLER			114		
516	14020	118		118	FT	SEMI-INTEGRAL ABUTMENT EXPANSION JOINT SEAL			118		
516	44200	12		12	EACH	ELASTOMERIC BEARING WITH INTERNAL LAMINATES AND LOAD PLATE (NEOPRENE) (10" X 15" X 3.14" WITH 11" X 16" X 1 1/2" LOAD PLATE)	12				
516	47001	LS		LS		JACKING AND TEMPORARY SUPPORT OF SUPERSTRUCTURE, AS PER PLAN			LS		2
517	75122	314		314	FT	RAILING (CONCRETE PARAPET WITH TWIN STEEL TUBE RAILING & VANDAL PROTECTION FENCE)			314		
518	21200	29		29	CY	POROUS BACKFILL WITH GEOTEXTILE FABRIC	29				
518	40000	126		126	FT	6" PERFORATED CORRUGATED PLASTIC PIPE	126				
518	40010	160		160	FT	6" NON-PERFORATED CORRUGATED PLASTIC PIPE, INCLUDING SPECIALS	160				
519	11101	198		198	SF	PATCHING CONCRETE STRUCTURE, AS PER PLAN	90	108			2
526	15011	238		238	SY	REINFORCED CONCRETE APPROACH SLABS WITH QC/OA (T=13"), AS PER PLAN			238		2
526	90030	102		102	FT	TYPE C INSTALLATION			102		
607	39930	278		278	FT	VANDAL PROTECTION FENCE, 12' CURVED, COATED FABRIC			278		
622	24001		252	252	FT	CONCRETE BARRIER, TYPE D, AS PER PLAN			252		2
622	25051		6	6	EACH	CONCRETE BARRIER, END ANCHORAGE, REINFORCED, TYPE D, AS PER PLAN			6		2

RESOURCE INTERNATIONAL INC.  
6350 PRESIDENTIAL GATEWAY  
COLUMBUS, OHIO 43231  
(614) 823-4949

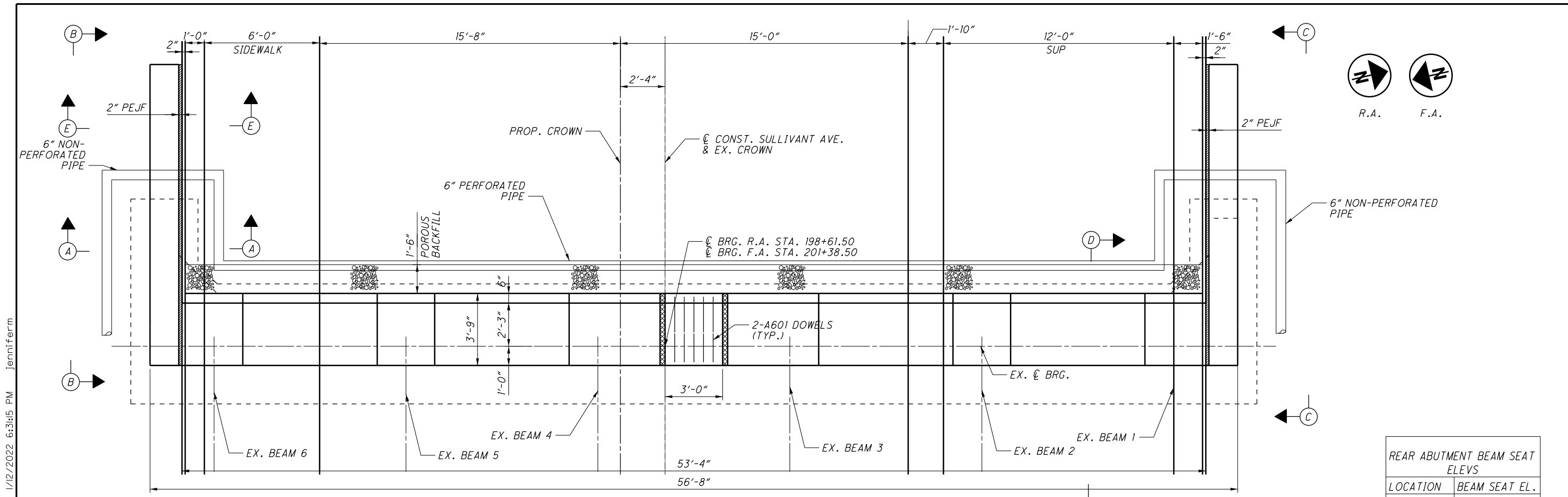


DATE 10/18/2021  
REVIEWED NCK  
DRAWN JCM  
DESIGNED JCM  
CHECKED MMS

STRUCTURE FILE NUMBER 2512459

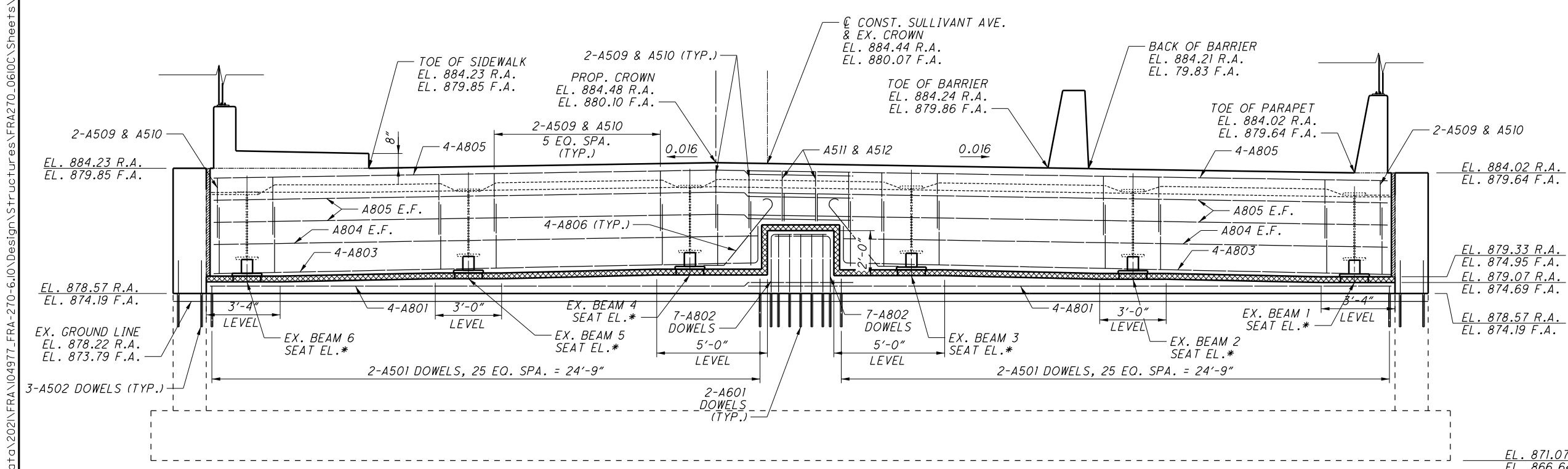
**ESTIMATED QUANTITIES**  
BRIDGE NO. FRA-270-0617  
SULLIVANT AVE OVER I-270

FRA - 270 - 06 . 17  
PID No. 104977  
3 / 19  
30 / 46



**PLAN**  
 REAR ABUTMENT SHOWN  
 FORWARD ABUTMENT OPPOSITE HAND

REAR ABUTMENT BEAM SEAT ELEVS	
LOCATION	BEAM SEAT EL.
B1	879.07
B2	879.22
B3	879.38
B4	879.41
B5	879.24
B6	879.10



**ABUTMENT ELEVATION**  
 REAR ABUTMENT SHOWN  
 FORWARD ABUTMENT OPPOSITE HAND

FORWARD ABUTMENT BEAM SEAT ELEVS	
LOCATION	BEAM SEAT EL.
B1	874.69
B2	874.85
B3	875.01
B4	875.05
B5	874.93
B6	874.73

**NOTES:**  
 LAP #5 BAR: 2'-5" MIN  
 LAP #8 BAR: 4'-9" MIN.

**LEGEND:**  
 \* - SEE TABLE FOR PROPOSED BEAM SEAT ELEVATIONS

RESOURCE INTERNATIONAL INC.  
 6350 PRESIDENTIAL GATEWAY  
 COLUMBUS, OHIO 43231  
 (614) 823-4949

Rii

REVIEWED DATE: 10/18/2022  
 DRAWN BY: JGM  
 CHECKED BY: MWS

STRUCTURE FILE NUMBER: 2512459

ABUTMENT PLAN AND ELEVATION  
 BRIDGE NO. FRA-270-0617  
 SULLIVANT AVE OVER IR 270

FRA-270-06.17  
 PID No. 104977

5 / 19

32  
 46