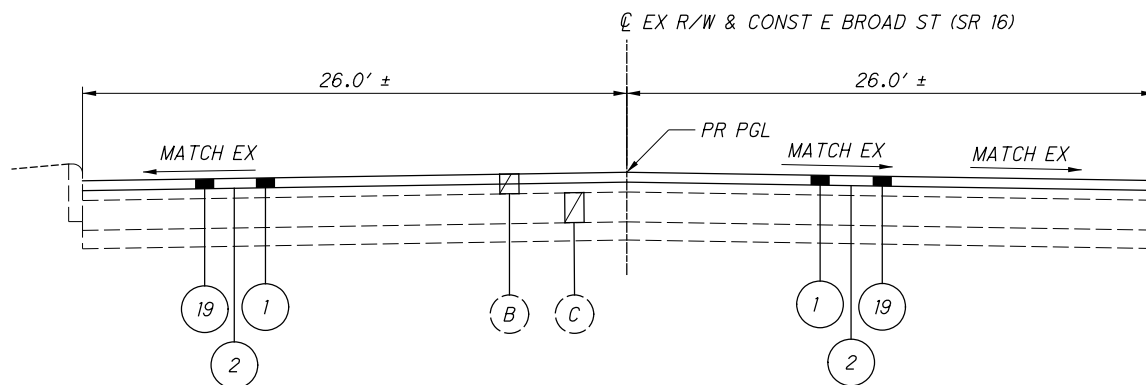


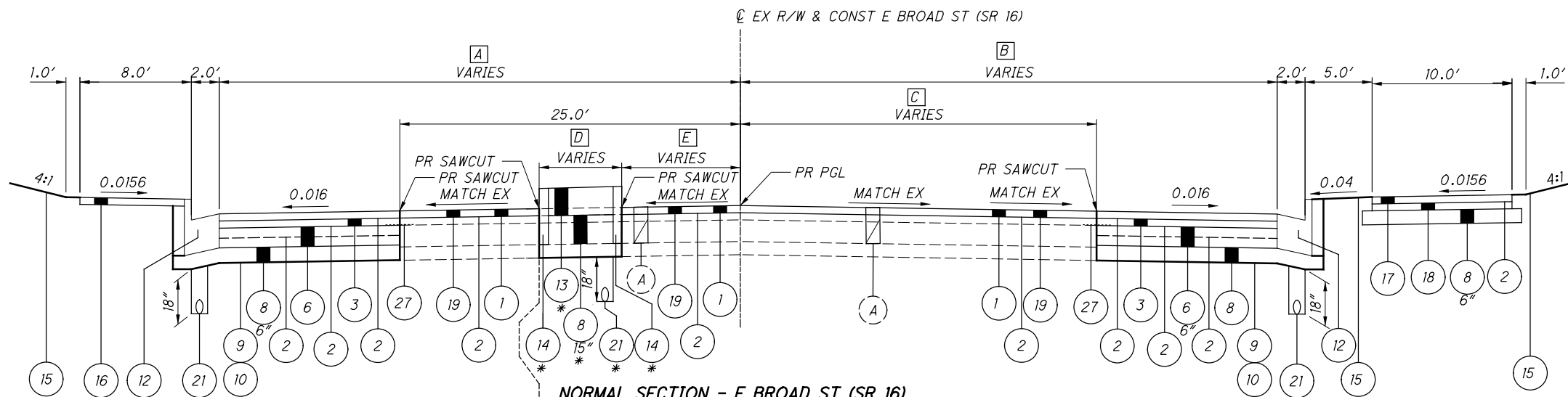
- [A] STA 360+82.43 TO STA 361+05.63 VARIES AT COMMERCIAL DRIVE
STA 361+05.63 TO STA 364+54.77 VARIES FROM 28.0' TO 45.0'
STA 364+54.77 TO STA 366+36.00 VARIES FROM 45.0' TO 47.5'
- [B] STA 360+84.52 TO STA 361+35.00 VARIES 26.3' TO 36.5'
STA 361+35.00 TO STA 366+51.60 VARIES 36.5'
- [C] STA 360+84.52 TO STA 360+96.80 VARIES 20.5'
STA 360+96.80 TO STA 366+51.60 VARIES 25.0'
- [D] STA 363+30.00 TO STA 365+06.12 VARIES FROM 6.4' TO 15.0'
STA 365+06.12 TO STA 365+21.94 VARIES 15.0'
STA 365+21.94 TO STA 366+09.94 VARIES FROM 15.0' TO 4.0'
STA 366+09.94 TO STA 366+46.00 VARIES 4.0'
- [E] STA 363+30.00 TO STA 365+21.94 VARIES 8.5'
STA 365+21.94 TO STA 366+09.94 VARIES FROM 8.5' TO 19.5'
STA 366+09.94 TO STA 366+46.00 VARIES 19.5'



NORMAL SECTION - E BROAD ST (SR 16)

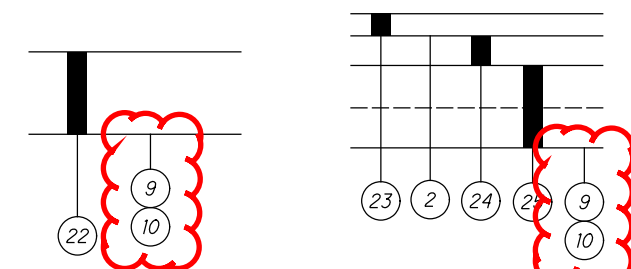
STA 359+63.00 TO STA 360+82.43

* STA 363+30.00 TO STA 366+46.00
FOR EXISTING LEGEND SEE SHEET 5
⊕ ITEM 304 AGGREGATE BASE (DEPTH VARIES) - THE EXISTING PAVEMENT AND THE WIDENING PAVEMENT SHOULD MEET AT THE SAME SUBGRADE ELEVATION. IF NECESSARY, THE AGGREGATE BASE UNDER THE WIDENING SHOULD BE ADJUSTED SO THAT THE SUBGRADE ELEVATIONS WILL MATCH. IF THE WIDENING IS THICKER THAN THE EXISTING, THE SUBGRADE SHOULD BE SLOPED AWAY FROM THE EXISTING AND DRAINAGE PROVIDED.



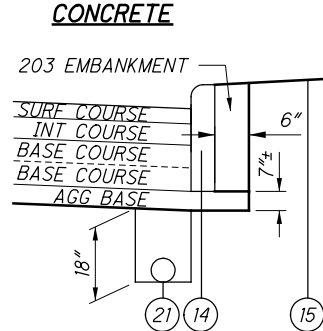
NORMAL SECTION - E BROAD ST (SR 16)

STA 360+82.43 TO STA 366+51.60

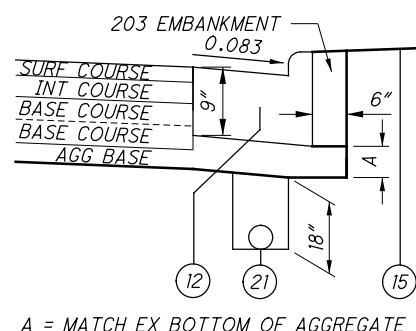


**DRIVE APRONS/
COMMERCIAL DRIVE.
CONCRETE**

**COMMERCIAL DRIVE/PARKING
LOT. ASPHALT**

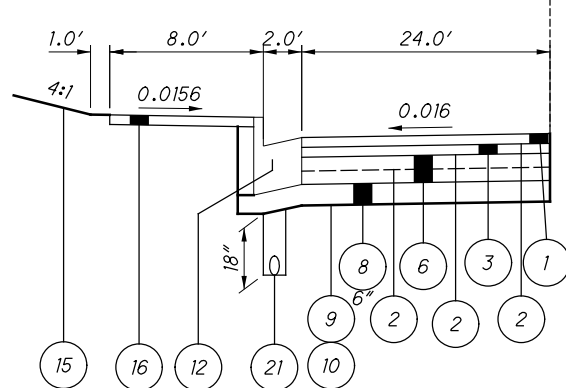


TYPICAL CURB DETAIL
NOT TO SCALE



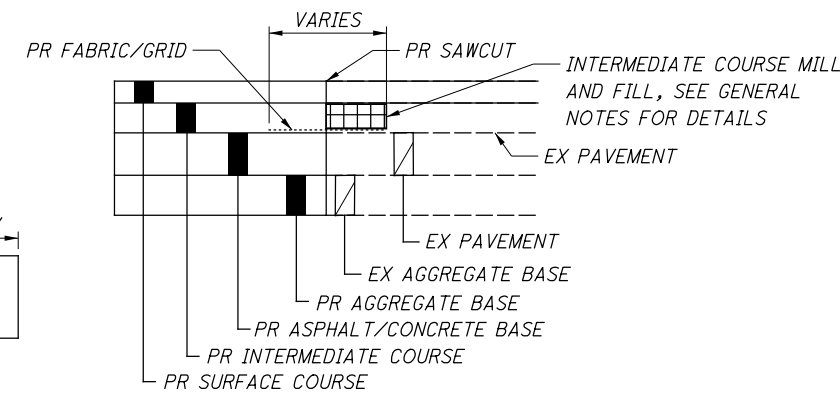
TYPICAL CURB & GUTTER DETAIL
NOT TO SCALE

A = MATCH EX BOTTOM OF AGGREGATE BASE: VARIES 8.5'± MIN, 9.5'± MAX



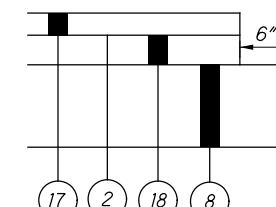
SECTION APPLIES

STA 364+54.77 TO STA 366+36.00



**TYPICAL PAVEMENT CRACK AND JOINT
REINFORCING FABRIC DETAIL**

NOT TO SCALE



TYPICAL SUP DETAIL

NOT TO SCALE

LEGEND

- 1 ITEM 442 - 1.5" ASPHALT CONCRETE SURFACE COURSE, 12.5MM, TYPE A (446)
- 2 ITEM 407 - NON-TRACKING TACK COAT
- 3 ITEM 442 - 1.75" ASPHALT CONCRETE INTERMEDIATE COURSE, 12.5MM, TYPE A (446)
- 4 ITEM 442 - 3.5" ASPHALT CONCRETE INTERMEDIATE COURSE, 19MM, TYPE A (448) (2 LIFTS)
- 5 ITEM 305 - 8" CONCRETE BASE
- 6 ITEM 302 - 9" ASPHALT CONCRETE BASE, PG64-22, (449) (2 LIFTS)
- 7 ITEM 302 - 10" ASPHALT CONCRETE BASE, PG64-22, (449) (2 LIFTS)
- 8 ITEM 304 - AGGREGATE BASE (DEPTH VARIES) ⊕
- 9 ITEM 204 - SUBGRADE COMPACTION
- 10 ITEM 204 - PROOF ROLLING
- 11 ITEM 204 - 12" EXCAVATION OF SUBGRADE
- 12 ITEM 609 - COMBINATION CURB AND GUTTER, TYPE 2
- 13 ITEM 203 - ROADWAY MISC.: BRICK PAVERS
- 14 ITEM 609 - CURB, TYPE 6
- 15 ITEM 659 - SEEDING AND MULCHING
- 16 ITEM 608 - 4" CONCRETE WALK
- 17 ITEM 823 - 1.5" ASPHALT CONCRETE SURFACE COURSE, TYPE 1, (448)
- 18 ITEM 823 - 1.75" ASPHALT CONCRETE INTERMEDIATE COURSE, TYPE 1, (448)
- 19 ITEM 254 - 1.5" PAVEMENT PLANING, ASPHALT CONCRETE
- 20 ITEM 203 - GRANULAR MATERIAL, TYPE B
- 21 ITEM 605 - 6" BASE PIPE UNDERDRAIN
- 22 ITEM 452 - 8" NON-REINFORCED CONCRETE PAVEMENT, CLASS QC MS
- 23 ITEM 441 - 1.25" ASPHALT CONCRETE SURFACE COURSE, TYPE 1, (448), PG64-22
- 24 ITEM 441 - 1.75" ASPHALT CONCRETE INTERMEDIATE COURSE, TYPE 2, (448)
- 25 ITEM 304 - 8" AGGREGATE BASE (2 LIFTS)
- 26 ITEM 204 - GEOGRID
- 27 ITEM 690 - SPECIAL - PAVEMENT CRACK AND JOINT REINFORCING FABRIC
- 28 ITEM 302 - 3" ASPHALT CONCRETE BASE, PG64-22, (449)
- 29 ITEM 609 - CURB, TYPE 6, AS PER PLAN
- 30 ITEM 609 - CURB, TYPE 7

J:\2019\16\0001\FRA\105768_BROAD_HAMILTON\Design\Roadway\Sheets\105768_GG001.dgn 2/2/2024 12:43:15 PM bmcuatchen

SHEET NUM.												PART.	ITEM	ITEM	GRAND	UNIT	DESCRIPTION	SEE SHEET NO.	CALCULATED	BMM	CHECKED	MJR
11	12	13	62	66	70	71	72	74	139	3 (RW)		01/MPO/04/WHIT	EXT	TOTAL	NO.							
LS												LS	201	11000	LS	ROADWAY						
					5,388							5,388	202	23000	5,388	SY	PAVEMENT REMOVED					
			18,055									18,055	202	30000	18,055	SF	WALK REMOVED					
			32									32	202	30800	32	SY	TRAFFIC ISLAND REMOVED					
			5,155									5,155	202	32000	5,155	FT	CURB REMOVED					
			2,474									2,474	202	35100	2,474	FT	PIPE REMOVED, 24" AND UNDER					
			7									7	SPECIAL	20253010	7	EACH	PARKING BLOCK REMOVED AND RESET				13	
			5									5	202	58000	5	EACH	MANHOLE REMOVED					
			25									25	202	58300	25	EACH	CATCH BASIN OR INLET REMOVED					
									2			2	202	75610	2	EACH	VALVE BOX REMOVED					
			LS									LS	202	98000	LS		REMOVAL MISC.: COTA BUS STOP ITEMS				11	
			LS									LS	202	98000	LS		REMOVAL MISC.: SITE DEMOLITION				13	
			LS									LS	202	98000	LS		REMOVAL MISC.: COMMERCIAL SIGN INCLUDING POWER SERVICE				13	
			30									30	202	98100	30	EACH	REMOVAL MISC.: BOLLARD				13	
			791									791	202	98200	791	FT	REMOVAL MISC.: CONCRETE BLOCK WALL				13	
			129									129	202	98200	129	FT	REMOVAL MISC.: WOOD FENCE				13	
			72									72	202	98200	72	FT	REMOVAL MISC.: TRENCH DRAIN				13	
									12			12	202	98600	12	EACH	ABANDON MISC.: WATER SERVICE				138	
									6,503			6,503	203	10000	6,503	CY	EXCAVATION					
									320			320	203	20000	320	CY	EMBANKMENT					
									1,295			1,295	203	35110	1,295	CY	GRANULAR MATERIAL, TYPE B					
					910							910	203	98100	910	SY	ROADWAY, MISC.: BRICK PAVERS				11	
LS												LS	203	98500	LS		ROADWAY, MISC.: GATEWAY FEATURE AND LANDSCAPING				11	
						8,419	787					9,206	204	10000	9,206	SY	SUBGRADE COMPACTION					
						1,295						1,295	204	13000	1,295	CY	EXCAVATION OF SUBGRADE					
						5						5	204	45000	5	HOUR	PROOF ROLLING					
						3,885						3,885	204	51000	3,885	SY	GEOGRID					
						14,979						14,979	608	10000	14,979	SF	4" CONCRETE WALK					
						1,481						1,481	608	52000	1,481	SF	CURB RAMP					
						243						243	608	53020	243	SF	DETECTABLE WARNING					
										27		27	623	38500	27	EACH	MONUMENT ASSEMBLY				10	
												LS	878	25000	LS		INSPECTION AND COMPACTION TESTING OF UNBOUND MATERIALS					
																	EROSION CONTROL					
2												2	659	00100	2	EACH	SOIL ANALYSIS TEST					
648												648	659	00300	648	CY	TOPSOIL					
5,835												5,835	659	10000	5,835	SY	SEEDING AND MULCHING					
292												292	659	14000	292	SY	REPAIR SEEDING AND MULCHING					
292												292	659	15000	292	SY	INTER-SEEDING					
1.31												1.31	659	20000	1.31	TON	COMMERCIAL FERTILIZER					
1.21												1.21	659	31000	1.21	ACRE	LIME					
33												33	659	35000	33	MGAL	WATER					
13												13	659	40000	13	MSF	MOWING					
												LS	832	15000	LS		STORM WATER POLLUTION PREVENTION PLAN					
												LS	832	15002	LS		STORM WATER POLLUTION PREVENTION INSPECTIONS					
												LS	832	15010	LS		STORM WATER POLLUTION PREVENTION INSPECTION SOFTWARE					
												32,762	832	30000	32,762	EACH	EROSION CONTROL					
																	ENVIRONMENTAL / REMEDIATION					
					5							5	202	67000	5	EACH	REGULATED UNDERGROUND STORAGE TANK REMOVED				12	
					LS							LS	202	98000	LS		REMOVAL MISC.: FUEL PUMP & APPURTENANCES INCLUDING POWER SERVICE				13	
												1,655	SPECIAL	69065000	1,655	TON	WORK INVOLVING NON-REGULATED MATERIALS				12	
												1,180	SPECIAL	69065016	1,180	TON	WORK INVOLVING PETROLEUM CONTAMINATED SOIL				12	
												2,000	SPECIAL	69065022	2,000	GAL	WORK INVOLVING NON-REGULATED WATER				12	
												2,000	SPECIAL	69065024	2,000	GAL	WORK INVOLVING REGULATED WATER				12	
																	DRAINAGE					
												100	605	13300	100	FT	6" UNCLASSIFIED PIPE UNDERDRAINS					
												4,884	605	14000	4,884	FT	6" BASE PIPE UNDERDRAINS					

GENERAL SUMMARY

FRA - 16 - 6.87

J:\2019\16\0001\FRA\105768_BROAD_HAMILTON\Design\Roadway\Sheets\105768_G5003.dgn 2/2/2024 10:42:24 AM bmccutchen

DESCRIPTION	STATION RANGE		LENGTH	CADD GENERATED AREA	202	203	204	204	204	204	254	302	302	302	304	305	407	407	407	441	441	442	442	442
	LF	SF			SY	CY	SY	CY	SY	CY	HOUR	SY	SY	CY	CY	CY	CY	SY	GAL	GAL	GAL	CY	CY	CY
BROAD STREET																								
WEST LEG																								
RESURFACING	359+63.00	TO 366+51.60		31650							3516.67							298.92					146.53	
FULL DEPTH WIDENING	360+82.43	TO 366+51.60		15135			1681.67					420.42		280.28			277.48						70.07	81.84
CURB AND GUTTER	360+85.00	TO 366+51.60	1111	3333			370.33							61.72										
PAVEMENT REMOVED	360+82.43	TO 366+51.60		8003	889.22																			
EAST LEG																								
EXCAVATION OF SUBGRADE	368+59.86	TO 371+50.00		10722		397.11		397.11		1191.33														
RESURFACING	368+59.86	TO 377+50.00		45446						5049.56														210.40
FULL DEPTH WIDENING	368+59.86	TO 374+33.83		18403			2044.78					511.19		340.80			337.39						85.20	99.51
CURB AND GUTTER	368+59.86	TO 374+33.83	596	1788			198.67							33.11										
PAVEMENT REMOVED	368+59.86	TO 374+33.83		3899	433.22																			
HAMILTON ROAD																								
SOUTH LEG																								
EXCAVATION OF SUBGRADE	271+00.00	TO 278+47.87		13275		491.67		491.67		1475.00														
RESURFACING	268+86.59	TO 278+47.87		53292						5921.33														246.72
CURB AND GUTTER	269+20.11	TO 278+47.87	895	2685			298.33							49.72										
FULL DEPTH COMPOSITE WIDENING	272+00.00	TO 278+47.87		9674			1074.89							179.15	1074.89	59.12		75.24					44.79	104.62
FULL DEPTH WIDENING	278+37.87	TO 278+47.87		46			5.11							1.42	0.85		0.84						0.21	0.25
PAVEMENT REMOVED	269+10.11	TO 278+47.87		5570	618.89																			
NORTH LEG																								
EXCAVATION OF SUBGRADE	284+25.00	TO 288+60.17		6827		252.85		252.85		758.56														
RESURFACING	279+96.47	TO 288+60.17		46658						5184.22														216.01
FULL DEPTH WIDENING	279+96.47	TO 288+60.17		12036			1337.33						365.54	222.89			220.65						55.72	65.08
CURB AND GUTTER	279+96.47	TO 284+50.00	989	2967			329.67							54.94										
CURB TYPE 6	284+50.00	TO 288+47.46	401	401			44.56							8.61										
CURB TYPE 6, AS PER PLAN	286+04.96	TO 288+21.71	210	210			23.33							4.51										
PAVEMENT REMOVED	279+96.47	TO 288+60.17		7589	843.22																			
INTERSECTION																								
EXCAVATION OF SUBGRADE	366+51.60	TO 368+59.86		4138		153.26		153.26		459.78														
RESURFACING (BROAD)	366+51.60	TO 368+59.86		18225						2025.00														84.38
FULL DEPTH WIDENING	278+47.87	TO 279+96.47		5862			651.33							108.56			107.47						27.14	31.66
CURB AND GUTTER (HAMILTON)	278+47.87	TO 279+96.47	285	855			95.00							15.83										
PAVEMENT REMOVED	278+47.87	TO 279+96.47		1295	143.89																			
PARKING LOT																								
SHELL	365+49.17	TO 367+12.61		356			39.53							8.83			2.17			1.37	1.92			
PAVEMENT REMOVED	365+49.17	TO 367+12.61		3369	374.33																			
FLOWERAMA	277+63.79	TO 278+92.67		868			96.48							21.54			5.31			3.35	4.69			
PAVEMENT REMOVED	277+63.79	TO 278+92.67		1465	162.78																			
SPEEDWAY																								
PAVEMENT REMOVED	368+19.99	TO 370+24.88		16356	1817.33																			
OPPORTUNITY WAY																								
PAVEMENT REMOVED	273+48.70	TO 274+50.79		1146			127.33					10.61		21.22			14.01			5.31	6.19			
PAVEMENT REMOVED	273+48.70	TO 274+50.79		941	104.56																			
SUBTOTALS					5387.44	1294.89	8418.34	294.89	5.00	3884.67	21696.78	10.61	931.61	366.96	1412.56	1074.89	1024.44	1844.23	75.24	10.03	12.80	1187.16	278.34	104.62

PAVEMENT SUBSUMMARY

FRA-16-6.87

CALCULATED
BMM
CHECKED
MJR

70
206

J:\2019\16\000T\FRA\105768_BROAD_BROAD_HAMILTON\Design\Roadway\Sheets\105768_G5003.dgn 2/2/2024 3:41:26 PM bmccutchen

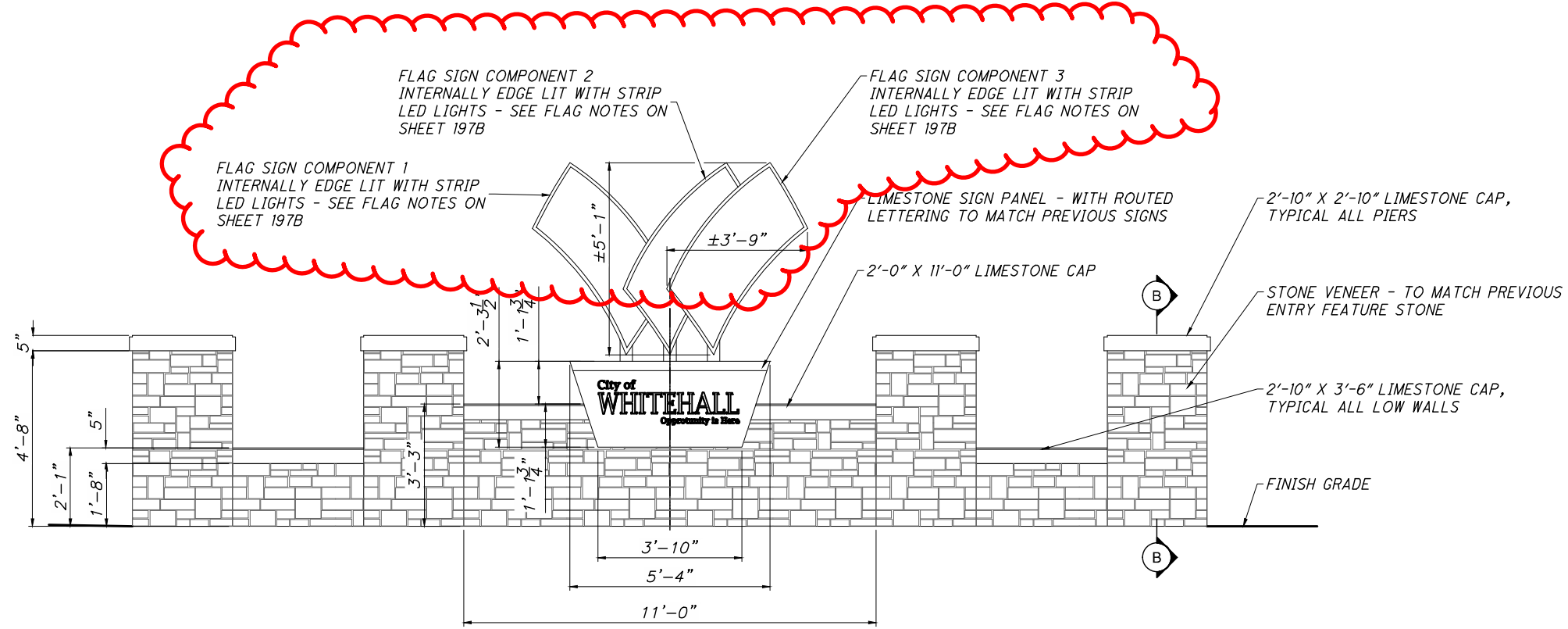
DESCRIPTION	STATION RANGE		CADD GENERATED AREA	CADD GENERATED AREA	204	304	407	441	441	452																	
			SF	SF	SY	CY	GAL	CY	CY	SY																	
<i>DRIVES</i>			<i>APRON (SF)</i>	<i>DRIVE (SF)</i>																							
DRIVE 2	362+77.66	LT	226	44	30.00	1.09	0.27	0.17	0.24	25.11																	
DRIVE 3	363+51.14	RT		1144	127.11	28.39	6.99	4.41	6.18																		
DRIVE 4	364+76.51	LT	225	177	44.67	4.39	1.08	0.68	0.96	25.00																	
DRIVE 5	365+34.16	LT	285	226	56.78	5.60	1.38	0.87	1.22	31.67																	
DRIVE 6	277+31.52	RT	230	833	118.11	20.57	5.09	3.21	4.50	25.56																	
DRIVE 7	280+85.96	LT	628	679	145.22	16.85	4.15	2.62	3.67	69.78																	
DRIVE 8	281+37.05	LT	354		39.33					39.33																	
DRIVE 9	281+92.98	LT	316		35.11					35.11																	
DRIVE 10	284+61.25	LT	226	135	40.11	3.35	0.83	0.52	0.73	25.11																	
DRIVE 11	283+17.89	RT	876	479	150.54	11.88	2.93	1.85	2.59	97.33																	
SUBTOTALS					786.99	92.11	22.71	14.34	20.08	374.00																	
TOTALS CARRIED TO GENERAL SUMMARY					787	93	23	15	20	374																	

CALCULATED
BMM
CHECKED
MJR

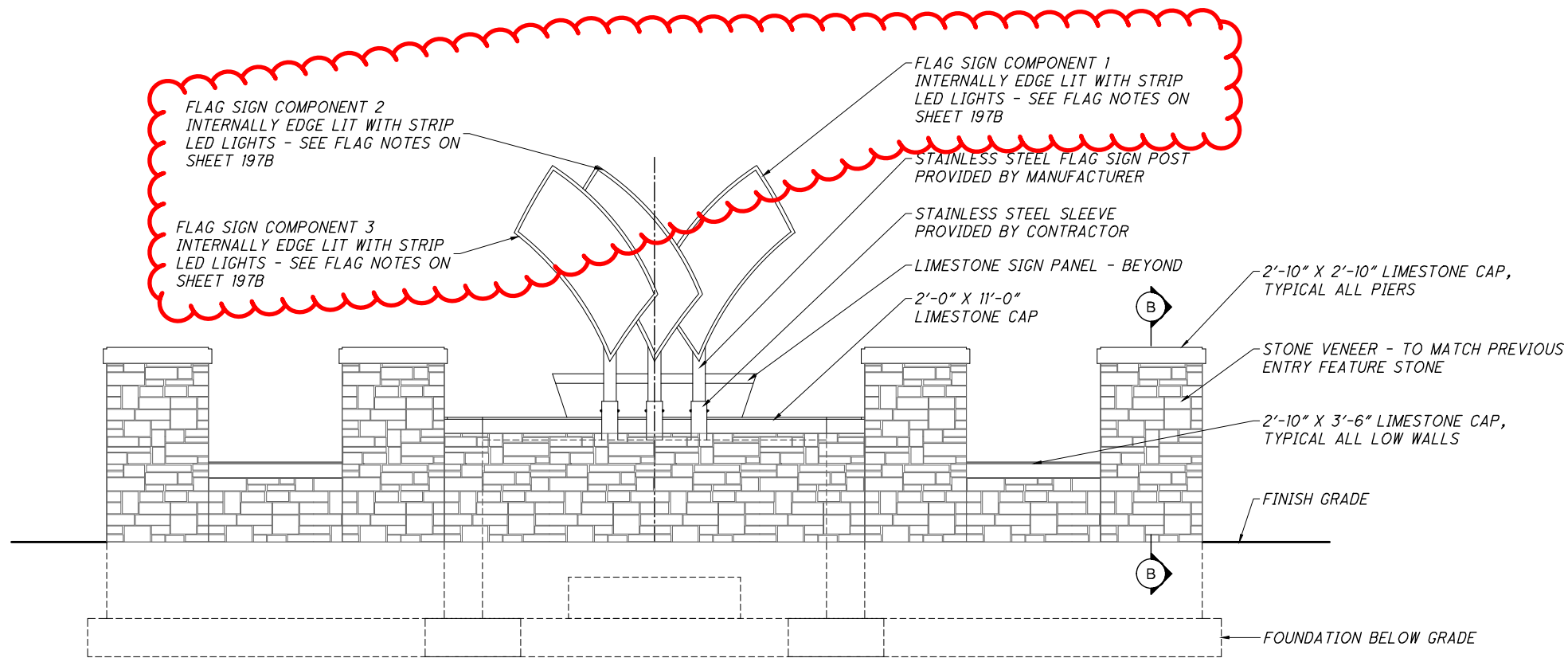
PAVEMENT SUBSUMMARY

FRA - 16 - 6.87

71
206



ELEVATION E-E
No Scale



ELEVATION F-F
No Scale

CALCULATED
VAM
CHECKED
FSM

LANDSCAPE PLAN
ENTRY FEATURE ELEVATIONS

FRA-16-6.87

197A
206

\\cmhdas01\project01\20191116\0001\FRA\105768_broad_hamilton\Design\landscape\Sheets\GL001.dwg, Last Saved By: imanno, 2/2/2024, 3:17 PM (No xref)
2/2/2024, 3:17 PM
3 Xrefs: 20151051-CS-REFR-E, 20151051-VS-BGRD-E, 20151051-CS-REFR-N

\\cmhdas01\project01\20191116\0001\FRA\105768_broad_hamilton\Design\landscape\Sheets\GL001.dwg, Last Saved By: imanno, 2/2/2024, 3:16 PM (No xref)
2/2/2024, 3:17 PM (No xref)

FLAG SIGN COMPONENT 3
INTERNALLY EDGE LIT WITH STRIP
LED LIGHTS, SEE FLAG NOTES BELOW

FLAG SIGN COMPONENT 2
INTERNALLY EDGE LIT WITH STRIP
LED LIGHTS - SEE FLAG NOTES BELOW

FLAG SIGN COMPONENT 1
INTERNALLY EDGE LIT WITH STRIP
LED LIGHTS - SEE FLAG NOTES BELOW

4X4 SIGN COMPONENT POST INSERTED
INTO STAINLESS STEEL TUBE SLEEVE,
SEE FLAG NOTES BELOW

BACK OF LIMESTONE
SIGN BEYOND

STAINLESS STEEL BOLT
AND T-GROOVE NUT
PROVIDED BY
CONTRACTOR (TYP.)

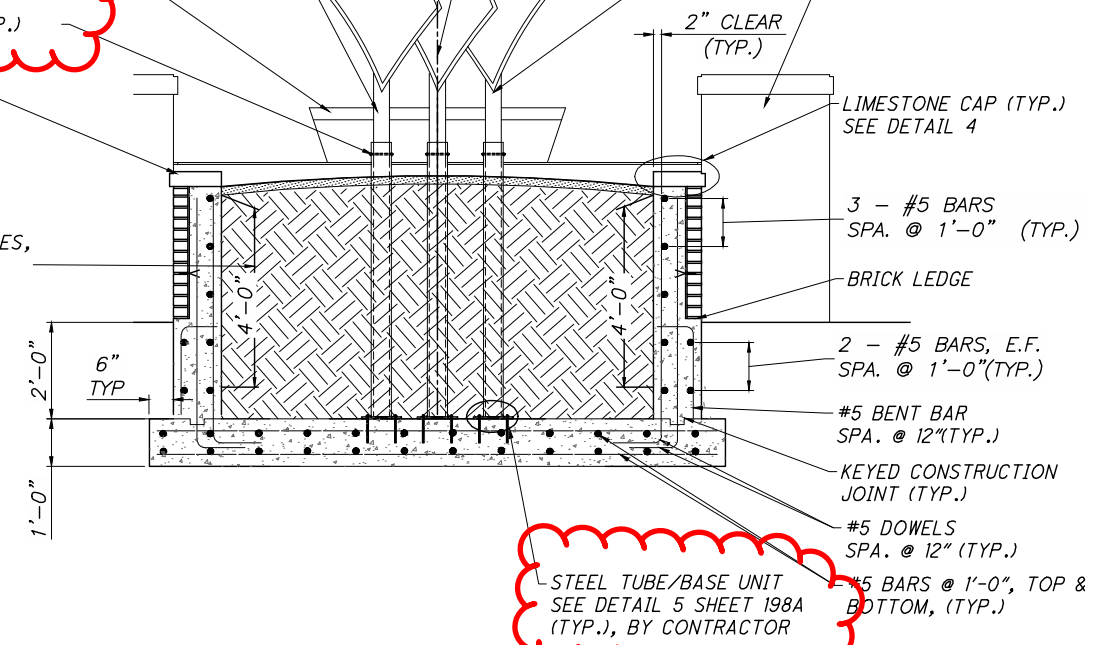
CENTERLINE CONSTRUCTION
AND ENTRY FEATURE

CONNECTION OF FLAG SIGN TO POST TO
BE PROVIDED BY MANUFACTURER (TYP.),
SEE FLAG NOTES BELOW

LIMESTONE CAP & WALL
COLUMN BEYOND (TYP.)

LIMESTONE CAP

LIMITS OF DAMP
PROOFING OF
CONCRETE SURFACES,
SEE NOTE 13



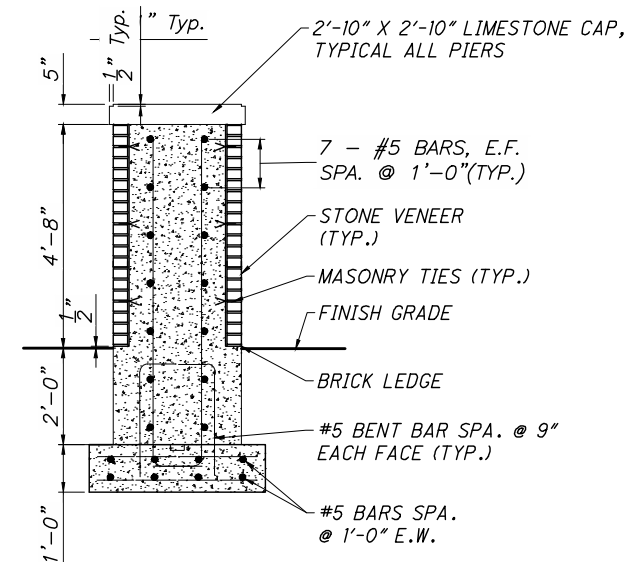
STEEL TUBE/BASE UNIT
SEE DETAIL 5 SHEET 198A
(TYP.), BY CONTRACTOR

SECTION D-D
No Scale

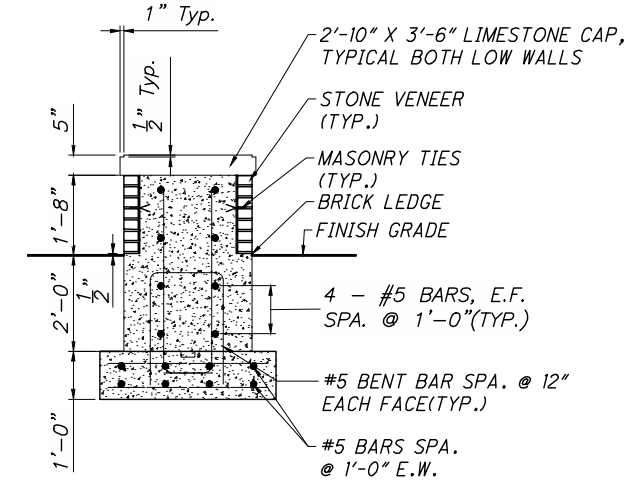
FLAG NOTES

1. THE CONTRACTOR SHALL PROVIDE SHOP DRAWINGS PREPARED BY THE FLAG SIGN COMPONENT MANUFACTURER FOR CITY REVIEW.
2. FLAGS SHALL MATCH EXISTING FLAGS ON NORTH HAMILTON ROAD WITH THE ADDITION OF LED EDGE LIGHTING. FOR CONSISTENCY OF MATERIALS THE FLAGS SHALL BE BY THE SAME MANUFACTURER AS THE EXISTING FLAGS: 3FORM (OR APPROVED EQUAL), WWW.3-FORM.COM, CONTACT SUSAN STUDER, (859) 653-4069.

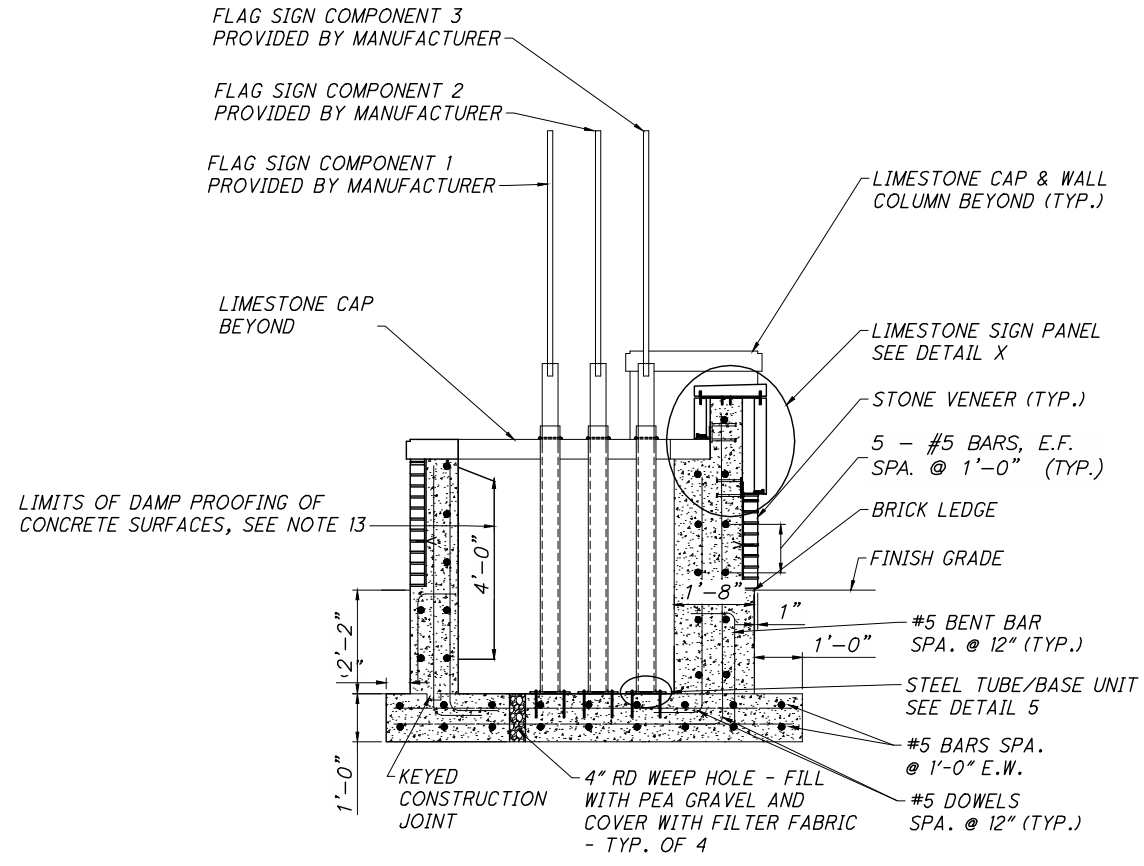
PANEL MATERIAL: 3FORM CHROMA XT ACRYLIC PANELS, 1/2 INCH THICK, VELLUM FINISH, BOTH SIDES. COLORS LISTED ARE FOR BIDDING AND MAY CHANGE UPON FINAL COLOR MATCHING BY 3FORM. COLORS: COMPONENT 1 TO MATCH PANTONE PMS-7458 (GL+BH+PEWTER CENTERED), COMPONENT 2 TO MATCH PANTONE PMS-359 (GM+GL+YM CENTERED), COMPONENT 3 TO MATCH PANTONE PMS-202 (COMPASS+RH CENTERED). FRAME COLOR & FINISH: POWDER COATED FINISH TO BE 3FORM STANDARD GRAY (RAL 9006).
3. SUBMIT SAMPLE CHIPS OF COMPONENTS AND FRAME FOR CITY REVIEW.
4. ALL FLAGS ARE IDENTICAL FORMS. ARTWORK FOR SHAPE WILL BE PROVIDE IN A .EPS FILE.
5. FLAGS SHALL BE FABRICATED WITH 4" X 4" POST TO SLIDE INTO 5" X 5" SLEEVE. SLEEVE SHALL BE BY CONTRACTOR. WIRING SHALL BE INTERNAL TO POSTS AND SLEEVES.
6. SECURE FLAG TO SLEEVE WITH STAINLESS STEEL BOLTS AND TRI-GROOVE NUTS PROVIDED BY CONTRACTOR / INSTALLER. PROVIDE ONE TRI-GROOVE SOCKET DRIVER FOR CITY'S USE.



SECTION B-B
No Scale



SECTION C-C
No Scale



SECTION A-A
No Scale

CALCULATED	VAM
CHECKED	FSM

LANDSCAPE PLAN
ENTRY FEATURE DETAILS

FRA-16-6.87