

SHEET NUM.										PART.		ALT	ITEM	ITEM	GRAND	UNIT	DESCRIPTION	SEE SHEET NO.
4	7	10	11	12	13	14	15			03/IMS/0 T	04/NHS/0 T	(X)		EXT	TOTAL			
ROADWAY																		
LS			3							LS	LS		201	11000	LS		CLEARING AND GRUBBING	
										3			203	35121	3	CY	GRANULAR MATERIAL, TYPE C, AS PER PLAN	11
EROSION CONTROL																		
										800	200		832	30000	1,000	EACH	EROSION CONTROL	
NOISE BARRIERS																		
	LS	LS	LS	LS		LS	LS			LS			503	21300	LS		UNCLASSIFIED EXCAVATION	
											LS		514	27800	LS		FIELD PAINTING, MISC.:FIELD PAINTING OF EXISTING STEEL POST	14
		1		1	1					3			SPECIAL	60610710	3	EACH	NOISE BARRIER PANEL REMOVAL AND REPLACEMENT	4
		1	1	2	1					5			SPECIAL	60610720	5	EACH	NOISE BARRIER PANEL REMOVAL AND REUSE	4
						5					5		SPECIAL	60610810	5	EACH	NOISE BARRIER, ALUMINUM PANEL REMOVAL AND REUSE	4
						5					5		SPECIAL	60610810	5	EACH	NOISE BARRIER, ALUMINUM PANEL REPLACEMENT	14
		2								2			SPECIAL	60610810	2	EACH	NOISE BARRIER, CONCRETE PANEL REPLACEMENT (REFLECTIVE)	5
						1					1		SPECIAL	60610810	1	EACH	NOISE BARRIER, STEEL POST REPAIR	14
							1						SPECIAL	60610810	1	EACH	NOISE BARRIER, STEEL POST REMOVAL AND REPLACEMENT	15
		1											SPECIAL	60610920	1	SF	NOISE BARRIER, CONCRETE PANEL REPAIR	11
							640						SPECIAL	60610920	640	SF	NOISE BARRIER, STEEL PANEL REMOVAL AND REPLACEMENT	5 & 15
MAINTENANCE OF TRAFFIC																		
	50									25	25		614	1110	50	hour	LAW ENFORCEMENT OFFICER WITH PATROL CAR FOR ASSISTANCE	
	6									2	4		614	12484	6	EACH	WORK ZONE INCREASED PENALTIES SIGN	
INCIDENTALS																		
										LS	LS		614	11000	LS		MAINTAINING TRAFFIC	
										LS	LS		624	10000	LS		MOBILIZATION	



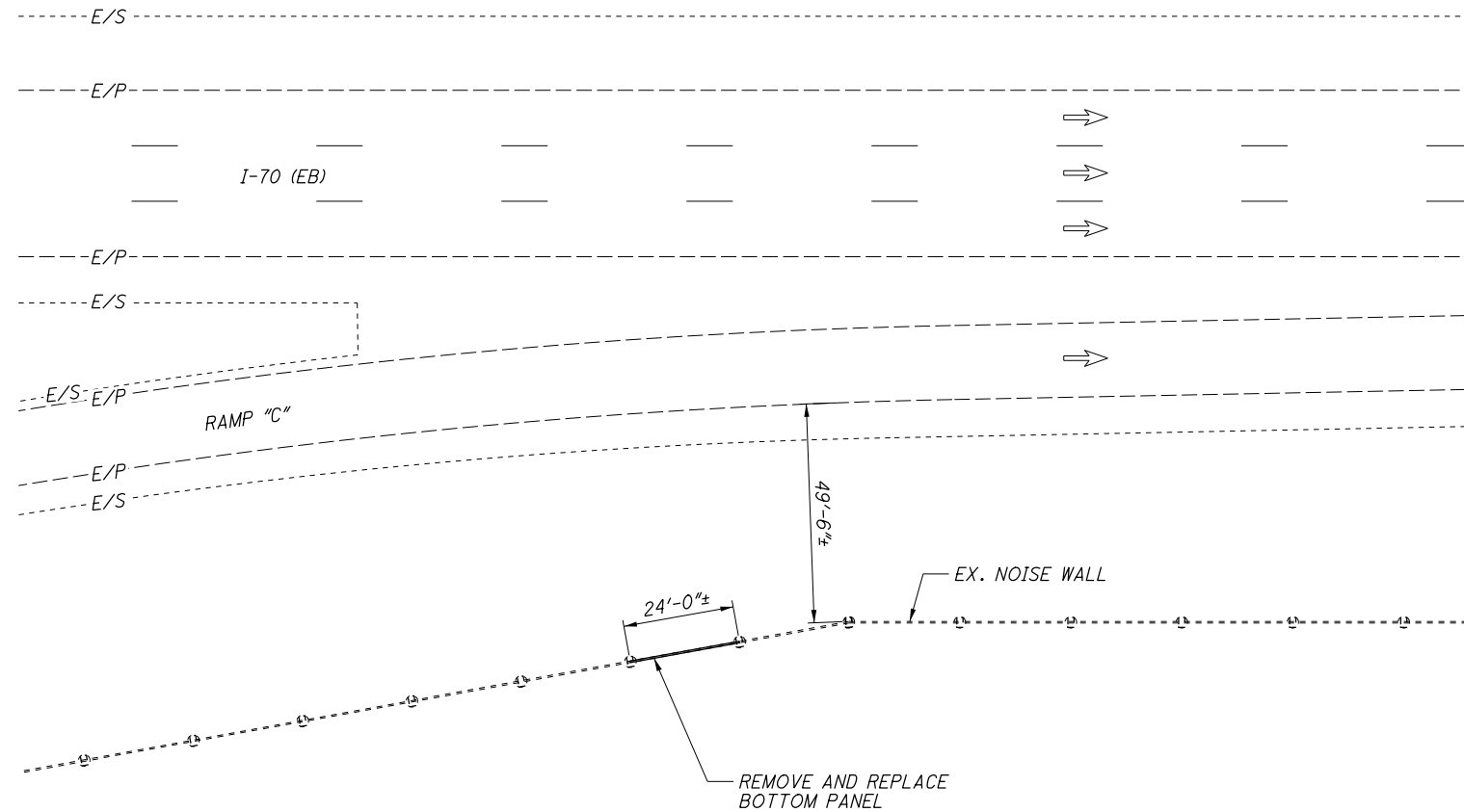
J:\16-147_D6NoiseWalls\5.0 Design (Work) Phase\93446_structures\Rehab_sites_1-8\93446G021.dgn_Sheet_2021-06-10 8:20:58 AM_jennifer.kelley

1 06-08-2021 ALUMINUM PANEL REPLACEMENT PAY ITEM ADDED AND UPDATED QUANTITY FOR NOISE BARRIER, ALUMINUM PANEL REMOVAL AND REUSE

GENERAL SUMMARY

DEL / FRA / MAD P2
NOISE WALL REPAIR

J:\16-147_D6NoiseWalls\5.0 Design (Work) Phase\93446_structures\Rehab_sites\1-8\Site 1 (MAD-IR70-SR56)\MAD-070-WE001.dgn Sheet Views 2021-06-09 11:13:33 AM Shirwan,Saeed

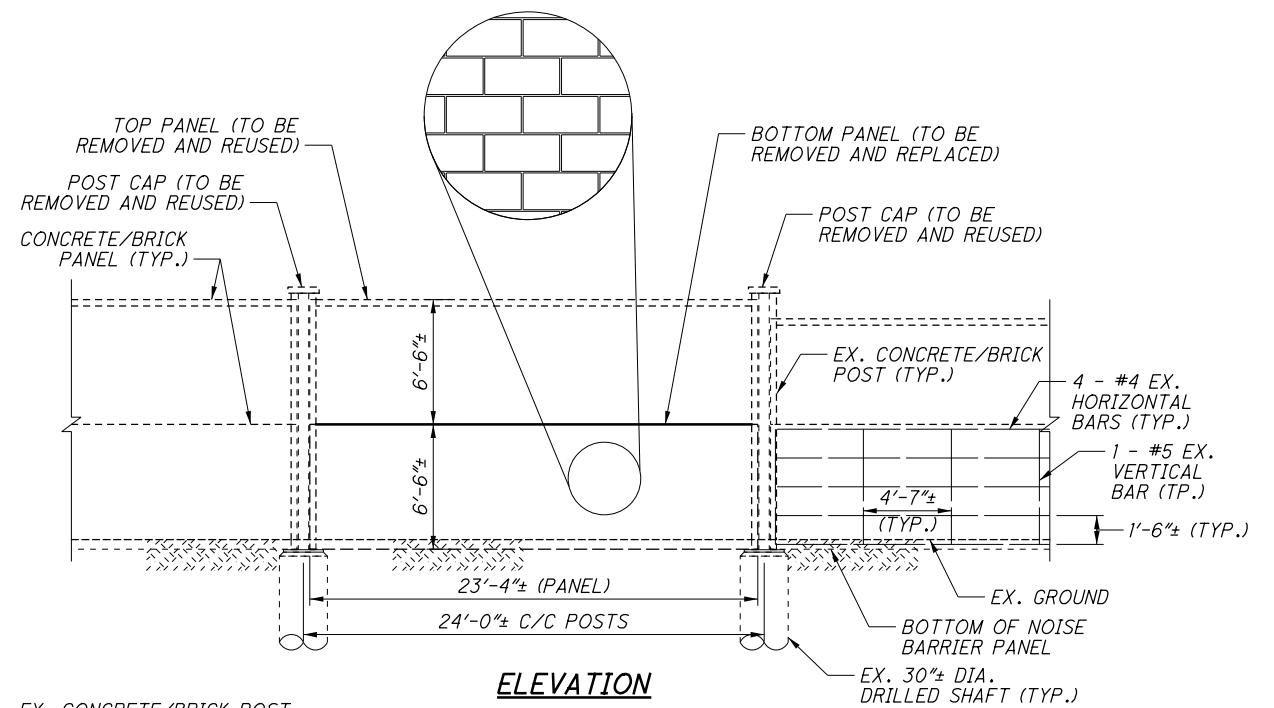


PLAN

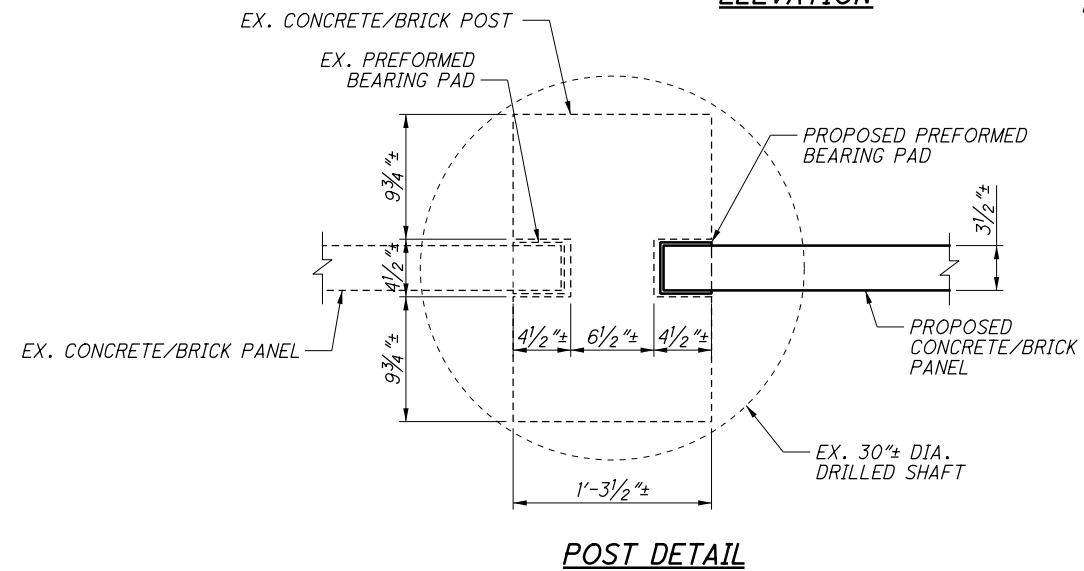
NOTES:

1. REMOVE AND REPLACE DAMAGED BOTTOM REINFORCED CONCRETE/BRICK PANEL (23'-4"± x 6'-6"±) IN KIND. BRICK PATTERN AND COLOR ARE RUNNING BOND AND BUFFALO RED BOTH SIDES. MATCH BRICK SIZE SHAPE AND COLOR AND MORTAR JOINT SIZE AND COLOR. THE NUMBER, SIZE AND LAYOUT OF REINFORCING BARS SHALL MATCH EXISTING PANEL REINFORCEMENT. CONTRACTOR SHALL CONFIRM PANEL MEASUREMENTS, TEXTURE, COLOR, AND REINFORCING BAR LAYOUT. THESE DETAILS MUST BE APPROVED BY THE ENGINEER PRIOR TO CASTING THE PANEL.
2. THE BEARING PADS SHALL BE A MINIMUM OF 1/4" THICK AND COVER A MINIMUM OF 25 SQUARE INCHES. THE BEARING PADS SHALL CONFORM TO ODOT C&MS 711.21 PREFORMED BEARING PADS.
3. EXISTING TOP PANEL AND TWO POST CAPS SHALL BE REMOVED AND REUSED. THE DEPARTMENT WILL NOT PAY FOR DAMAGE TO THE EXISTING UPPER PANEL OR POST CAPS RESULTING FROM THIS WORK.
4. THE CONTRACTOR SHALL BE PERMITTED TO USE A FORMLINED PRECAST PANEL PROVIDED THAT THE PANEL IS MODIFIED TO FIT THE EXISTING CONCRETE/BRICK POST 4 1/2" SLOT AND THE FORMLINED FINISH IS FLUSH WITH THE EXISTING FACE OF THE TOP PANEL. THESE DETAILS MUST BE APPROVED BY THE ENGINEER PRIOR TO CASTING THE PANEL. THE COST SHALL BE INCLUDED IN THE UNIT PRICE BID FOR ITEM 606, SPECIAL - NOISE BARRIER REMOVAL AND REPLACEMENT.

06-08-2021 NOTE ADDED



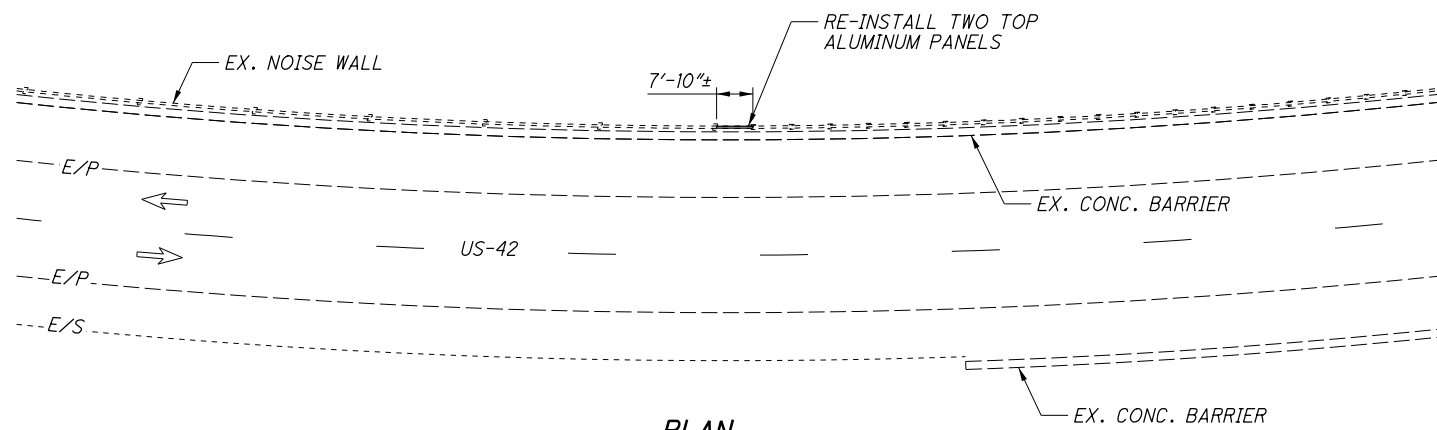
ELEVATION



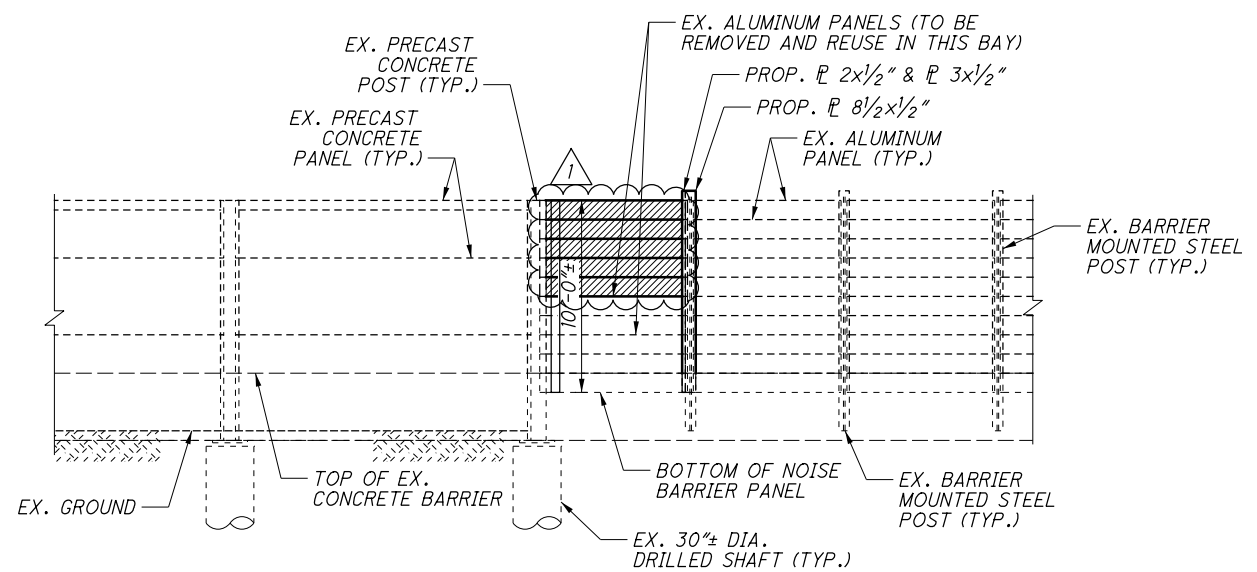
POST DETAIL

ESTIMATED QUANTITIES					CALCULATED BY: SS CHECKED BY: DEB	
ITEM	ITEM EXT.	TOTAL	UNIT	DESCRIPTION	SEE SHEET #	
503	21300	LUMP		UNCLASSIFIED EXCAVATION		
SPECIAL	60610710	1	EACH	NOISE BARRIER PANEL REMOVAL AND REPLACEMENT	4	
SPECIAL	60610720	1	EACH	NOISE BARRIER PANEL REMOVAL AND REUSE	4	

J:\16-147_D6NoiseWalls\5.0 Design (Work) Phase\93446_structures\Rehab_sites\1-8\Site 5 (FRA-US42-6.99)\DEL-042-WE001.dgn Sheet Views 2021-06-09 5:43:08 PM Shirwan.Saeed



PLAN

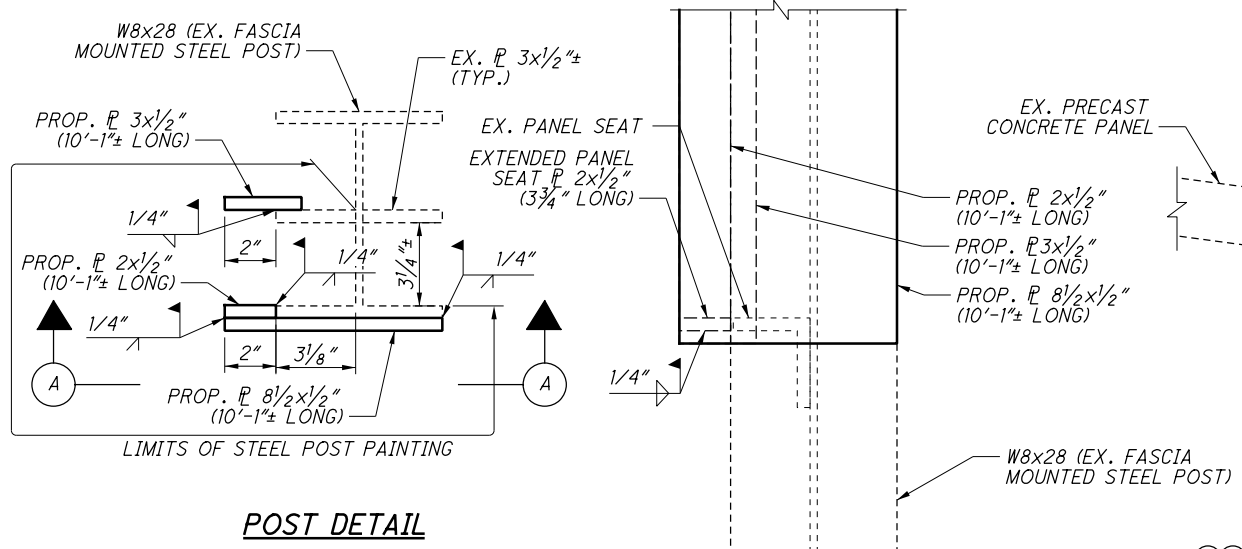


ELEVATION



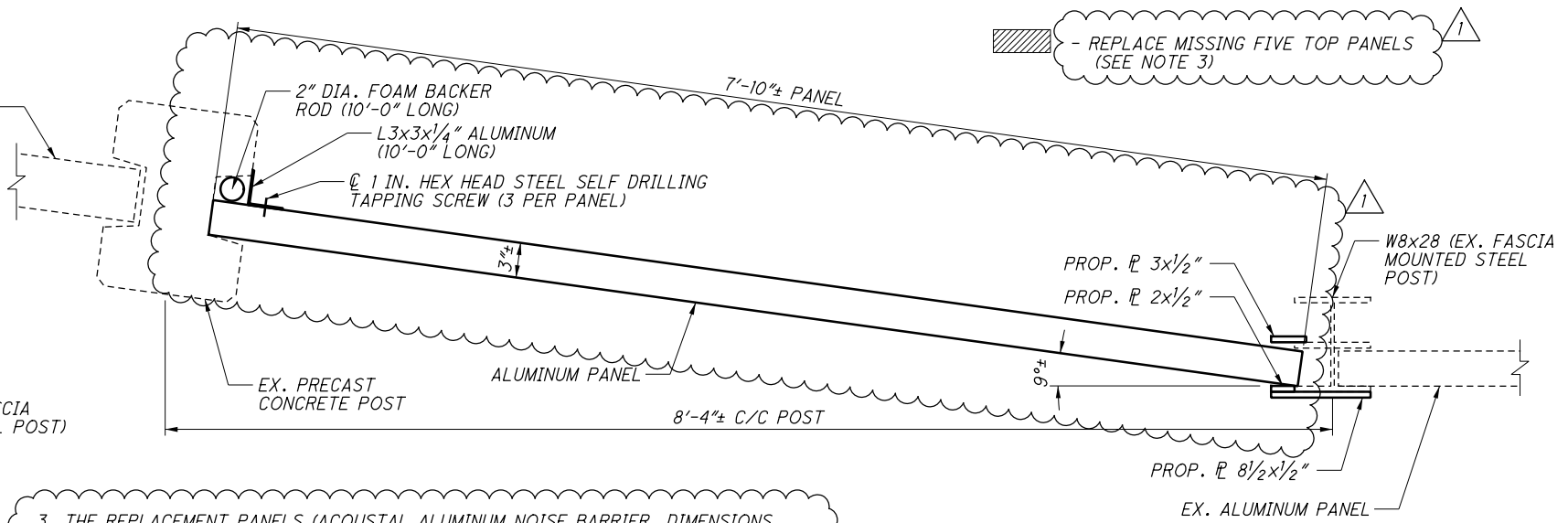
CALCULATED BY: SS
CHECKED BY: DEB

NOISE WALL REPAIR PLAN & ELEVATION
LOCATION 5: DEL-US42-6.99



POST DETAIL

VIEW A-A



3. THE REPLACEMENT PANELS (ACOUSTAL ALUMINUM NOISE BARRIER, DIMENSIONS 7'-10" x 1'-0" x 3", FEDERAL COLOR NO. 17778 - LIGHT NEUTRAL) ARE TO BE FABRICATED BY FADDIS CONCRETE PRODUCTS, TEL NO.: (610) 269-4685. THE CONTRACTOR SHALL CONFIRM PANEL PAINT COLOR AND MEASUREMENTS. THE COLOR, MATERIAL TYPE AND PATTERN OF REPLACEMENT PANELS SHALL MATCH THE EXISTING PANELS. THESE DETAILS SHALL BE APPROVED BY THE ENGINEER PRIOR TO FABRICATION AND ORDERING THE PANELS. INSTALL 2" DIA. FOAM BACKER ROD AND L3x3x1/4" ALUMINUM ANGLE WITH 1" HEX HEAD STEEL SELF DRILLING TAPPING SCREWS AS SHOWN ON THE PLANS.

THE COST FOR THE ABOVE WORK SHALL BE INCLUDED IN THE UNIT PRICE BID FOR ITEM 606, SPECIAL - NOISE BARRIER, ALUMINUM PANEL REPLACEMENT, AND SHALL INCLUDE ALL LABOR, EQUIPMENT, MATERIALS AND INCIDENTALS NECESSARY TO COMPLETE THE WORK.

06-08-2021 PANEL REPLACEMENT DETAILS REVISED
NOISE BARRIER, ALUMINUM PANEL REMOVAL AND REUSE QUANTITY UPDATED
NOISE BARRIER, ALUMINUM PANEL REPLACEMENT NOTE AND PAY ITEM ADDED

NOTES:

- WELD # 3x1/2" TO THE BACK FACE OF EX. BACK PLATE AS SHOWN ON THE PLANS. WELD # 2x1/2" TO THE FRONT FLANGE OF THE STEEL POST, AND GRIND WELD FLUSH WITH THE FLANGE SURFACE. WELD # 8 1/2x1/2" TO THE FRONT FLANGE FOR AESTHETIC PURPOSE. EXTEND PANEL SEAT BY WELDING # 2x1/2" BETWEEN NEW PLATES.

CONTRACTOR SHALL CONTROL HEAT DURING WELDING, OR REMOVE AND RE-INSTALL METAL PANELS ON BOTH SIDES OF THE POST.

ALL STEEL PLATE MATERIALS SHALL BE ASTM A709, GRADE 36.

THE COST FOR THE ABOVE WORK SHALL BE INCLUDED IN THE UNIT PRICE BID FOR ITEM 606, SPECIAL - NOISE BARRIER, STEEL POST REPAIR, AND SHALL INCLUDE ALL LABOR, EQUIPMENT, MATERIALS AND INCIDENTALS NECESSARY TO COMPLETE THE WORK.
- FIELD PAINT NEW STEEL PLATES AND EXISTING STEEL POST ACCORDING TO C&MS 514. THE PAINT COLOR SHALL CLOSELY MATCH THE COLOR OF EXISTING STEEL POSTS. THE COST SHALL BE INCLUDED IN THE LUMP SUM PRICE BID FOR ITEM 514, FIELD PAINTING, MISC.: FIELD PAINTING OF EXISTING STEEL POST, AND SHALL INCLUDE ALL LABOR, EQUIPMENT, MATERIALS AND INCIDENTALS NECESSARY INCLUDING THE SURFACE PREPARATION OF EXISTING STEEL AND ALL PRIME, INTERMEDIATE AND FINISH COAT.

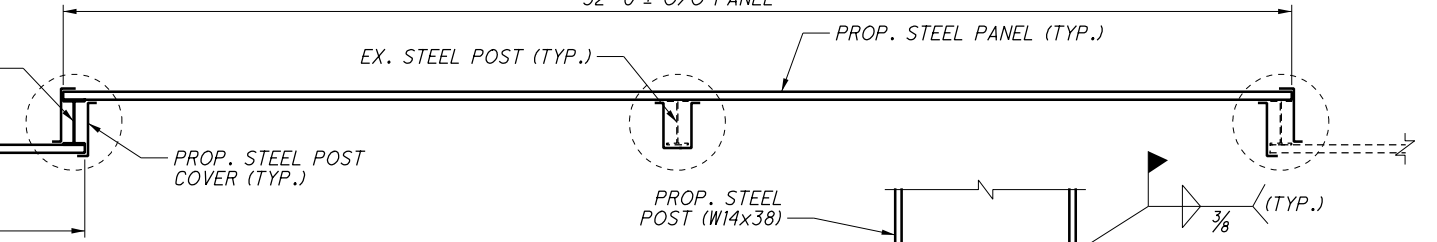
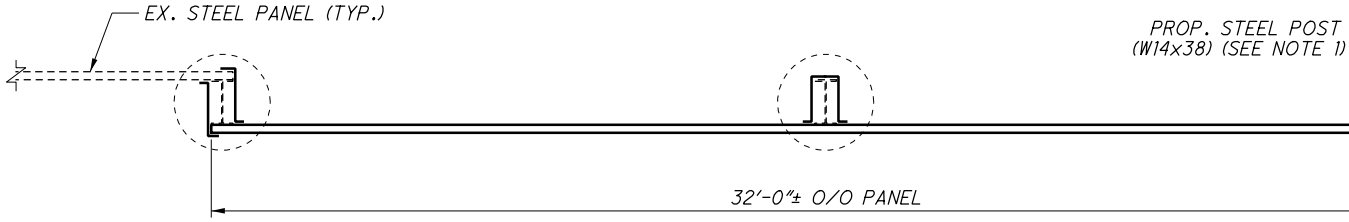
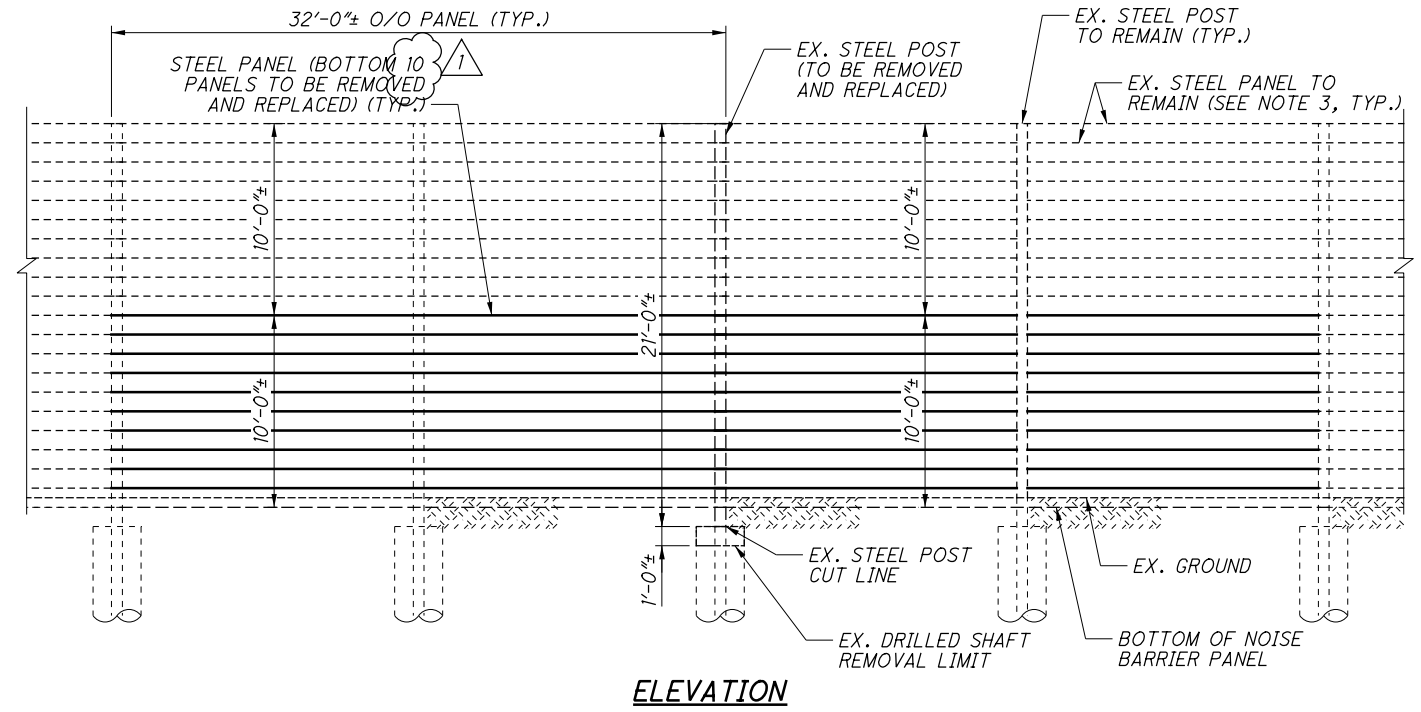
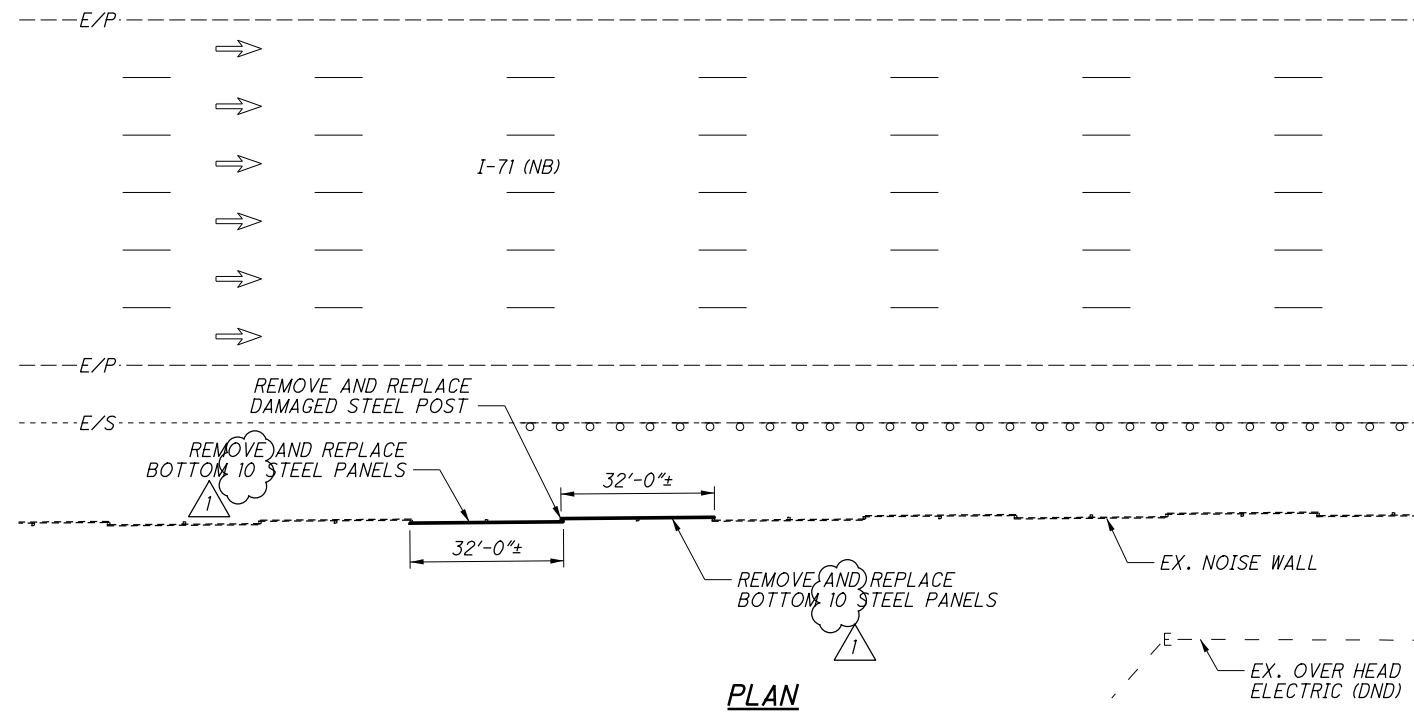
ESTIMATED QUANTITIES

CALCULATED BY: SS
CHECKED BY: DEB

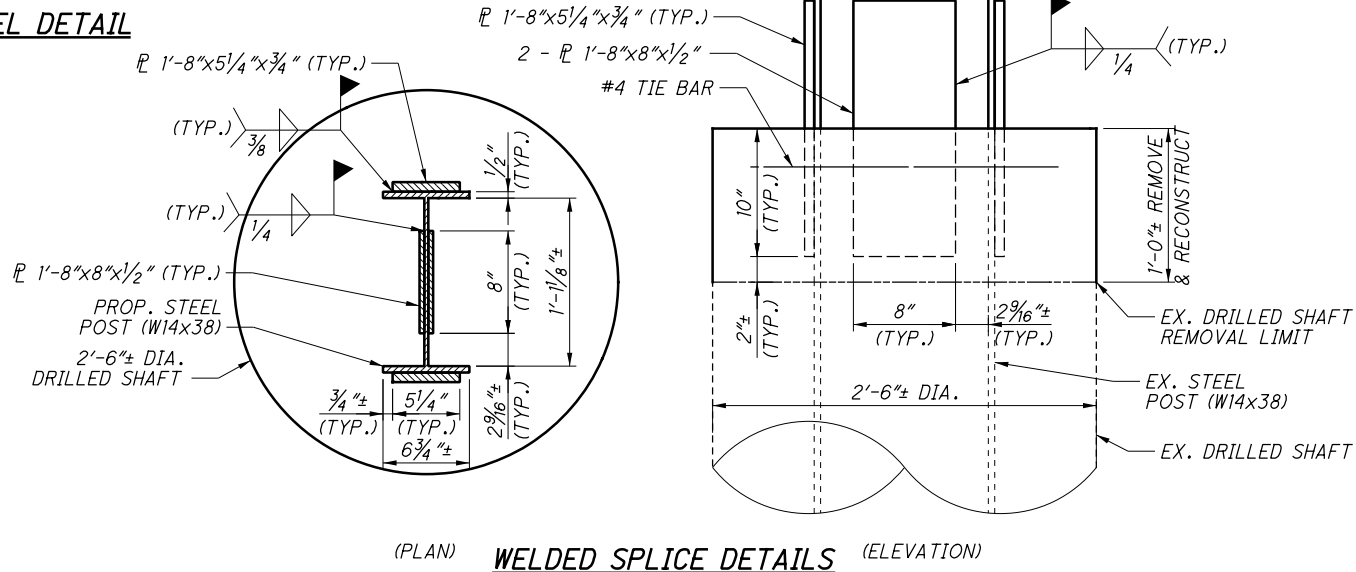
ITEM	ITEM EXT.	TOTAL	UNIT	DESCRIPTION	SEE SHEET #
514	27800	LUMP		FIELD PAINTING, MISC.: FIELD PAINTING OF EXISTING STEEL POST	14
SPECIAL	60610810	5	EACH	NOISE BARRIER, ALUMINUM PANEL REMOVAL AND REUSE	14
SPECIAL	60610810	5	EACH	NOISE BARRIER, ALUMINUM PANEL REPLACEMENT	14
SPECIAL	60610810	1	EACH	NOISE BARRIER, STEEL POST REPAIR	14

DEL / FRA / MAD P2
NOISE WALL REPAIR

J:\16-147_D6NoiseWalls\5.0 Design (Work) Phase\93446_structures\Rehab_sites_1-8\Site 6 (FRA-IR71-29.63)\FRA-071-WE003.dgn Sheet Views 2021-06-08 12:37:37 PM Shirwan.Saeed



PANEL DETAIL



NOTES:

1. REMOVE AND REPLACE DAMAGED STEEL POST. CONTRACTOR SHALL CONFIRM STEEL POST AND DRILLED SHAFT MEASUREMENTS.

THE ENGINEER WILL VISUALLY INSPECT EXISTING POST FOUNDATION TO EVALUATE THE PHYSICAL CONDITION OF THE POST FOUNDATION. REMOVE 1'-0" FROM EXISTING DRILLED SHAFT, AND CUT EXISTING STEEL POST AT 1'-0" ABOVE DRILLED SHAFT REMOVAL LIMIT. WELD SPLICE NEW POST TO THE EXISTING STEEL POST AS SHOWN ON THE PLANS. REPAIR THE GALVANIZING PER C&MS 711.02, AND RECONSTRUCT THE DRILLED SHAFT TO THE EXISTING TOP ELEVATION. THESE DETAIL SHALL BE APPROVED BY THE ENGINEER PRIOR TO FABRICATING AND ORDERING THE STEEL POST.

POST COVER PLATE GAUGE, SHAPE, AND PAINT COLOR SHALL MATCH EXISTING POST COVER PLATES. THESE DETAIL SHALL BE APPROVED BY THE ENGINEER PRIOR TO FABRICATING AND ORDERING THE PANEL.

STEEL POST SHALL BE ASTM A572 GRADE 50 STEEL, HOT DIPPED GALVANIZED PER C&MS 711.02. STEEL SPLICE PLATES SHALL BE GRADE 50 STEEL, GALVANIZED PER C&MS 711.02. FABRICATE STRUCTURAL STEEL MEMBERS ACCORDING TO C&MS 513. THE MINIMUM SPECIFIED TENSILE STRENGTH OF THE WELDING ELECTRODE (WELD METAL) SHALL BE 70 KSI. REPAIR ALL DAMAGE TO THE GALVANIZING ACCORDING TO C&MS 711.02 AND ASTM A780.

THE COST FOR THE ABOVE WORK SHALL BE INCLUDED IN THE UNIT PRICE BID FOR ITEM 606, SPECIAL - NOISE BARRIER, STEEL POST REMOVAL AND REPLACEMENT, AND SHALL INCLUDE ALL LABOR, EQUIPMENT, MATERIALS AND INCIDENTALS NECESSARY TO COMPLETE THE WORK.
2. REMOVE AND REPLACE BOTTOM 10 STEEL PANELS IN 2 BAYS. CONTRACTOR SHALL CONFIRM PANEL MEASUREMENTS.

STEEL POST COVERS AND PANEL MATERIAL, GAUGE, SHAPE, AND PAINT COLOR SHALL MATCH EXISTING PANELS.
3. DURING STEEL POST REPLACEMENT, THE CONTRACTOR SHALL BE REQUIRED TO TEMPORARILY SUPPORT PANELS TO REMAIN ABOVE THE PANELS TO BE REPLACED, OR REMOVE AND REINSTALL THE UNDAMAGED TOP PANELS. THIS WORK SHALL BE INCIDENTAL TO ITEM 606, SPECIAL - NOISE BARRIER, STEEL POST REMOVAL AND REPLACEMENT.

1 06-08-2021 NUMBER OF PANELS UPDATED

ESTIMATED QUANTITIES					CALCULATED BY: SS CHECKED BY: DEB	
ITEM	ITEM EXT.	TOTAL	UNIT	DESCRIPTION	SEE SHEET #	
503	21300	LUMP		UNCLASSIFIED EXCAVATION		
SPECIAL	60610810	1	EACH	NOISE BARRIER, STEEL POST REMOVAL AND REPLACEMENT	15	
SPECIAL	60610920	640	SF	NOISE BARRIER, STEEL PANEL REMOVAL AND REPLACEMENT	5 & 15	

CALCULATED BY: SS

 CHECKED BY: DEB

NOISE WALL REPAIR PLAN & ELEVATION
LOCATION 6: FRA-IR71-29.63

DEL / FRA / MAD P2
NOISE WALL REPAIR

15
 15