

REF. NO.	SHEET NO.	STATION TO STATION		SIDE	614	614	614	614	614	614	614	614	622								
		FROM	TO		WORK ZONE EDGE LINE, CLASS I (YELLOW) MILE	WORK ZONE EDGE LINE, CLASS I (WHITE) MILE	WORK ZONE CHANNELIZING LINE, CLASS I (WHITE) FT	WORK ZONE DOTTED LINE, CLASS I (WHITE) FT	BARRIER REFLECTOR, TYPE 1, ONE-WAY EA	BARRIER REFLECTOR, TYPE 2, ONE-WAY EA	OBJECT MARKER, ONE-WAY EA	WORK ZONE IMPACT ATTENUATOR, 24" HAZARDS, UN-DIRECTIONAL EA	PORTABLE BARRIER, UNANCHORED FT								
ELY-1	P.15 - P.24	324+59	365+10	RT	0.80																
CH-1	P.15 - P.24	324+59	368+10	RT																	
CH-2	P.15 - P.24	324+59	368+10	RT																	
DL-1	P.15 - P.16	324+59	328+98	RT																	
CH-4	P.16 - P.25	329+50	373+18	LT																	
ELW-1	P.16 - P.17	328+98	330+56	RT		0.03															
CH-3	P.16 - P.17	328+98	332+15	RT																	
ELW-3	P.17 - P.23	332+50	363+75	LT		0.59															
ELW-2	P.17 - P.24	332+15	365+10	RT		0.62															
CH-5	P.17 - P.25	332+50	373+18	LT																	
ELY-2	P.17 - P.25	332+50	370+18	LT	0.71																
BR-1	P.18 - P.23	338+20	360+20	RT						33	11	45									
PB-1	P.18 - P.22	336+50	357+30	RT						41	41	1	2080								
PB-2	P.19 - P.20	340+40	346+50	LT						12	11	1	610								
PB-3	P.20 - P.23	347+50	361+10	LT						27	26	1	1360								
BR-2	P.18 - P.23	338+20	360+20	RT						31	11	44									
DL-2	P.23 - P.24	363+75	366+68	LT																	
ELW-4	P.24 - P.25	366+84	370+18	LT		0.06															
CH-6	P.24 - P.25	366+68	373+18	LT																	
TOTALS CARRIED TO GENERAL SUMMARY					1.51	1.31	18551	732	144	22	167	3	4050								

MAINTENANCE OF TRAFFIC SUBSUMMARY
 PHASE ONE

DESIGN AGENCY
Michael Baker INTERNATIONAL

DESIGNER
 JTS

REVIEWER
 KMD 10/31/23

PROJECT ID
 111641


SHEET TOTAL
 P.11 | P.179

SHEET NO.						PARTICIPATION			ITEM	ITEM EXT.	GRAND TOTAL	UNIT	DESCRIPTION	SEE SHEET NO.	
P.9	P.10	P.11	P.12	P.13	P.14	01/IMS/13	02/IMS/13	03/IMS/05							
													STRUCTURES OVER 20' SPAN		
														P.99	
														P.118	
														P.140	
	200						126	44	30	614	11110	200	hour	LAW ENFORCEMENT OFFICER WITH PATROL CAR FOR ASSISTANCE	P.10
		3	2	3	2		6	2	2	614	12380	10	EA	WORK ZONE IMPACT ATTENUATOR, 24" WIDE HAZARDS, UNIDIRECTIONAL	P.8
							LS	LS	LS	614	12420	LS		DETOUR SIGNING	
4							2	1	1	614	12484	4	EA	WORK ZONE INCREASED PENALTIES SIGNS	
		144	70	82	80		237	83	56	614	13310	376	EA	BARRIER REFLECTOR, TYPE 1, ONE-WAY	
		22					14	5	3	614	13312	22	EA	BARRIER REFLECTOR, TYPE 2, ONE-WAY	
		167	67	80	77		246	86	59	614	13350	391	EA	OBJECT MARKER, ONE-WAY	
12							7	3	2	614	18601	12	SNMT	PORTABLE CHANGEABLE MESSAGE SIGN, AS PER PLAN	P.9
				0.87	0.20		0.68	0.24	0.16	614	20010	1.08	MILE	WORK ZONE LANE LINE, CLASS I, 6"	
		1.51	0.83	1.48	0.72		2.87	1.00	0.68	614	22010	4.55	MILE	WORK ZONE EDGE LINE, CLASS I, 6"	
							2.49	0.87	0.59	614	22010	3.95	MILE	WORK ZONE EDGE LINE, CLASS I, 6"	
							33763	11790	8039	614	23010	53592	FT	WORK ZONE CHANNELIZING LINE, CLASS I, 12"	
							732	1604	1934	614	24000	5910	FT	WORK ZONE DOTTED LINE, CLASS I	
	4.80						3.02	1.06	0.72	614	20560	4.80	MILE	WORK ZONE LANE LINE, CLASS III, 6", 642 PAINT	
	4.10						2.58	0.90	0.62	614	22360	4.10	MILE	WORK ZONE EDGE LINE, CLASS III, 6", 642 PAINT	
	3122						1967	687	468	614	23690	3122	FT	WORK ZONE CHANNELIZING LINE, CLASS III, 12", 642 PAINT	
		4050	3980	4165	4075		10250	3579	2441	622	41100	16270	FT	PORTABLE BARRIER, UNANCHORED	
														INCIDENTALS	
							LS	LS	LS	614	11000	LS		MAINTAINING TRAFFIC	
							4	1	1	619	16010	6	MNTH	FIELD OFFICE, TYPE B	
							LS	LS	LS	623	10000	LS		CONSTRUCTION LAYOUT STAKES AND SURVEYING	
							LS	LS	LS	624	10000	LS		MOBILIZATION	

BY: P.JL DATE: 02/01/2024
 CHECKED: NCK DATE: 02/01/2024

ITEM NO.	EXTENSION	02/IMS/13 TOTAL	UNIT	DESCRIPTION	ABUT.	PIERS	SUPER.	GEN	SEE SHEET NO.
202	11203	1	LS	PORTIONS OF STRUCTURE REMOVED, OVER 20 FOOT SPAN, AS PER PLAN					2/18
509	10001	26133	LB	EPOXY COATED STEEL REINFORCEMENT, AS PER PLAN	2133		24000		2/18
509	30020	3923	FT	NO. 4 DEFORMED GFRP REINFORCEMENT			3923		
510	10000	89	EACH	DOWEL HOLES WITH NONSHRINK, NONMETALLIC GROUT	89				
511	34444	42	CY	CLASS QC2 CONCRETE, BRIDGE DECK			42		
511	34448	47	CY	CLASS QC2 CONCRETE, BRIDGE DECK (PARAPET)			47		
511	44110	6	CY	CLASS QC1 CONCRETE, ABUTMENT NOT INCLUDING FOOTING	6				
512	10100	260	SY	SEALING OF CONCRETE SURFACES (EPOXY-URETHANE)				260	
512	10300	276	SY	SEALING CONCRETE BRIDGE DECKS WITH HMWM RESIN			276		
514	00050	4133	SF	SURFACE PREPARATION OF EXISTING STRUCTURAL STEEL			4133		
514	00056	4133	SF	FIELD PAINTING OF EXISTING STRUCTURAL STEEL, PRIME COAT			4133		
514	00060	4133	SF	FIELD PAINTING STRUCTURAL STEEL, INTERMEDIATE COAT			4133		
514	00066	4133	SF	FIELD PAINTING STRUCTURAL STEEL, FINISH COAT			4133		
516	01301	325	FT	ELASTOMERIC STRIP SEAL WITHOUT STEEL EXTRUSIONS, AS PER PLAN				325	2/18
516	12201	55	FT	STRUCTURAL STEEL EXPANSION JOINT, AS PER PLAN				55	2/18
519	11101	20	SF	PATCHING CONCRETE STRUCTURE, AS PER PLAN				20	2/18
526	25000	121	SY	REINFORCED CONCRETE APPROACH SLABS (T=15")			121		
848	10100	1685	SY	LATEX MODIFIED CONCRETE OVERLAY USING HYDRODEMOLITION, 2 INCHES			1685		
848	20000	1685	SY	SURFACE PREPARATION USING HYDRODEMOLITION			1685		
848	30100	5	CY	LATEX MODIFIED CONCRETE OVERLAY (VARIABLE THICKNESS), MATERIAL ONLY			5		2/18
848	50000	18	SY	HAND CHIPPING			18		
848	50200	2	CY	FULL-DEPTH REPAIR			2		
848	50320	1685	SY	EXISTING CONCRETE OVERLAY REMOVED, 1 3/4 INCHES			1685		

ESTIMATED QUANTITIES
 BRIDGE NO. FRA-670-0018
 I-670 OVER I-70

SFN	2504340
DESIGN AGENCY	
	
DESIGNER	CHECKER
BCB	DJK
REVIEWER	
RDH	02/01/24
PROJECT ID	111641
SUBSET	TOTAL
3	18
SHEET	TOTAL
P.99	P.179

BY: PJJ DATE: 02/01/2024
 CHECKED: NCK DATE: 02/01/2024

ITEM NO.	EXTENSION	02/IMS/13 TOTAL	UNIT	DESCRIPTION	ABUT.	PIERS	SUPER.	GEN	SEE SHEET NO.
202	11203	1	LS	PORTIONS OF STRUCTURE REMOVED, OVER 20 FOOT SPAN, AS PER PLAN					2/20
509	10000	30796	LB	EPOXY COATED STEEL REINFORCEMENT	1346		29450		
509	30020	4735	FT	NO. 4 DEFORMED GFRP REINFORCEMENT			4735		
510	10000	66	EACH	DOWEL HOLES WITH NONSHRINK, NONMETALLIC GROUT	66				
511	34444	45	CY	CLASS QC2 CONCRETE, BRIDGE DECK			45		
511	34448	54	CY	CLASS QC2 CONCRETE, BRIDGE DECK (PARAPET)			54		
511	44110	4	CY	CLASS QC1 CONCRETE, ABUTMENT NOT INCLUDING FOOTING	4				
512	10100	316	SY	SEALING OF CONCRETE SURFACES (EPOXY-URETHANE)				316	
512	10300	314	SY	SEALING CONCRETE BRIDGE DECKS WITH HMWM RESIN			314		
512	10600	48	FT	CONCRETE REPAIR BY EPOXY INJECTION				48	
514	00050	5416	SF	SURFACE PREPARATION OF EXISTING STRUCTURAL STEEL			5416		
514	00056	5416	SF	FIELD PAINTING OF EXISTING STRUCTURAL STEEL, PRIME COAT			5416		
514	00060	5416	SF	FIELD PAINTING STRUCTURAL STEEL, INTERMEDIATE COAT			5416		
514	00066	5416	SF	FIELD PAINTING STRUCTURAL STEEL, FINISH COAT			5416		
516	01301	255	FT	ELASTOMERIC STRIP SEAL WITHOUT STEEL EXTRUSIONS, AS PER PLAN				255	2/20
516	12201	34	FT	STRUCTURAL STEEL EXPANSION JOINT, AS PER PLAN				34	2/20
516	45305	27	EACH	REFURBISH BEARING DEVICE, AS PER PLAN				27	2/20
516	46000	3	EACH	BEARING DEVICE, BOLSTER				3	
516	46200	2	EACH	BEARING DEVICE, ROCKER				2	
516	47000	1	LS	JACKING AND TEMPORARY SUPPORT OF SUPERSTRUCTURE			1		2/20
519	11101	360	SF	PATCHING CONCRETE STRUCTURE, AS PER PLAN				360	2/20
526	25000	78	SY	REINFORCED CONCRETE APPROACH SLABS (T=15")			78		
848	10100	2001	SY	LATEX MODIFIED CONCRETE OVERLAY USING HYDRODEMOLITION, 2 INCHES			2001		
848	20000	2001	SY	SURFACE PREPARATION USING HYDRODEMOLITION			2001		
848	30100	4	CY	LATEX MODIFIED CONCRETE OVERLAY (VARIABLE THICKNESS), MATERIAL ONLY			4		2/20
848	50000	20	SY	HAND CHIPPING			20		
848	50200	2	CY	FULL-DEPTH REPAIR			2		
848	50320	2001	SY	EXISTING CONCRETE OVERLAY REMOVED, 1-3/4 INCHES			2001		

BEARINGS:

- THE CONTRACTOR SHALL FIELD VERIFY THE TILT OF ALL EXPANSION BEARINGS. IF A BEARING IS MEASURED TO BE BEYOND RECALL, DEFINED AS TILTED BEYOND 15 DEGREES, THE BEARING SHALL BE REPLACED. ADDITIONAL BEARINGS MAY BE REPLACED AT THE ENGINEER'S DISCRETION. ADDITIONAL BEARINGS REPLACED WILL BE PAID FOR AT THE UNIT PRICE RATE FOR ITEM 516.
- ALL BEARINGS NOT REPLACED SHALL BE REFURBISHED PER ITEM 516 - REFURBISH BEARING DEVICE, AS PER PLAN.
- THE CONTRACTOR SHALL VERIFY THE DIMENSIONS OF BEARINGS TO BE REPLACED AND SELECT THE CORRESPONDING BEARING TYPE FROM THE ARCHIVED STANDARD DRAWING RB-1-55 DATED 2/2/1959. THE CONTRACTOR SHALL SUBMIT THEIR MEASUREMENTS AND SELECTED BEARING TO THE ENGINEER FOR APPROVAL PRIOR TO FURNISHING.
- BEARINGS TO BE REPLACED IN-KIND INCLUDE:
 GIRDER 1, REAR
 GIRDER 2, REAR
 GIRDER 4, FORWARD
 GIRDER 9, REAR
 GIRDER 14, FORWARD

ESTIMATED QUANTITIES
 BRIDGE NO. FRA-670-0021
 I-670 OVER MCKINLEY AVENUE

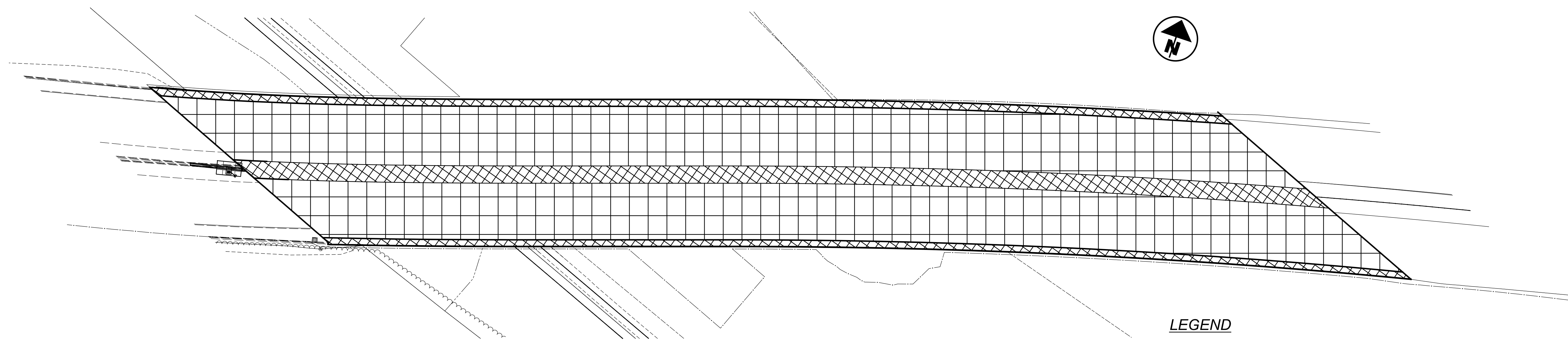
SFN	2504367
DESIGN AGENCY	
DESIGNER	Michael Baker
CHECKER	INTERNATIONAL
REVIEWER	AJE PJJ
PROJECT ID	111641
SUBSET	4 20
SHEET	P.118 P.179

BY: P.JL DATE: 02/01/2024
 CHECKED: NCK DATE: 02/01/2024

ITEM NO.	EXTENSION	01/IMS/13 TOTAL	UNIT	DESCRIPTION	ABUT.	PIERS	SUPER.	GEN	SEE SHEET NO.
202	11203	1	LS	PORTIONS OF STRUCTURE REMOVED, OVER 20 FOOT SPAN, AS PER PLAN					4/43
509	10001	261379	LB	EPOXY COATED STEEL REINFORCEMENT, AS PER PLAN	1855	3414	256110		18/43
509	30020	53024	FT	NO. 4 DEFORMED GFRP REINFORCEMENT			53024		4/43
510	10000	81	EACH	DOWEL HOLES WITH NONSHRINK, NONMETALLIC GROUT	81				
511	34444	385	CY	CLASS QC2 CONCRETE, BRIDGE DECK			385		
511	34448	513	CY	CLASS QC2 CONCRETE, BRIDGE DECK (PARAPET)			513		
511	44110	5	CY	CLASS QC1 CONCRETE, ABUTMENT NOT INCLUDING FOOTING	5				
512	10100	3573	SY	SEALING OF CONCRETE SURFACES (EPOXY-URETHANE)				3573	
512	10300	1564	SY	SEALING CONCRETE BRIDGE DECKS WITH HMWM RESIN			1564		
512	10600	50	FT	CONCRETE REPAIR BY EPOXY INJECTION					
514	00050	9757	SF	SURFACE PREPARATION OF EXISTING STRUCTURAL STEEL			9757		
514	00056	9757	SF	FIELD PAINTING OF EXISTING STRUCTURAL STEEL, PRIME COAT			9757		
514	00060	9757	SF	FIELD PAINTING STRUCTURAL STEEL, INTERMEDIATE COAT			9757		
514	00066	9757	SF	FIELD PAINTING STRUCTURAL STEEL, FINISH COAT			9757		
516	01301	505	FT	ELASTOMERIC STRIP SEAL WITHOUT STEEL EXTRUSIONS, AS PER PLAN				505	4/43
516	12201	75	FT	STRUCTURAL STEEL EXPANSION JOINT, AS PER PLAN				75	4/43
516	44201	16	EACH	ELASTOMERIC BEARING WITH INTERNAL LAMINATES AND LOAD PLATE (12" DIA.x3.375" with 13"x16"x0.5" LOAD PLATE)(NEOPRENE), AS PER PLAN				16	29/43
516	45305	10	EACH	REFURBISH BEARING DEVICE, AS PER PLAN				10	4/43
516	46701	48	EACH	RESET BEARING, AS PER PLAN				48	4/43
516	47001	1	LS	JACKING AND TEMPORARY SUPPORT OF SUPERSTRUCTURE, AS PER PLAN			1		4/43
518	12301	92	EACH	SCUPPERS, INCLUDING SUPPORTS, AS PER PLAN			92		13/43
SPECIAL	51900100	393	SF	COMPOSITE FIBER WRAP SYSTEM		393			4/43
519	11101	1096	SF	PATCHING CONCRETE STRUCTURE, AS PER PLAN				1096	4/43
526	25000	109	SY	REINFORCED CONCRETE APPROACH SLABS (T=15")			109		
607	39900	249	FT	VANDAL PROTECTION FENCE, 6' STRAIGHT, COATED FABRIC			249		
844	10000	493	SF	CONCRETE PATCHING WITH GALVANIC ANODE PROTECTION		493			
848	10100	9782	SY	LATEX MODIFIED CONCRETE OVERLAY USING HYDRODEMOLITION, 2 INCHES			9782		
848	20000	9782	SY	SURFACE PREPARATION USING HYDRODEMOLITION			9782		
848	30100	42	CY	LATEX MODIFIED CONCRETE OVERLAY (VARIABLE THICKNESS), MATERIAL ONLY			42		5/43
848	50000	98	SY	HAND CHIPPING			98		
848	50200	4	CY	FULL-DEPTH REPAIR			4		
848	50320	9782	SY	EXISTING CONCRETE OVERLAY REMOVED, 13/4 INCHES			9782		

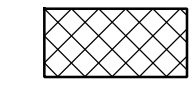
ESTIMATED QUANTITIES
 BRIDGE NO. FRA-670-0031
 I-670 OVER CSXT, SCIOTO RIVER, EB RAMP TO I-670

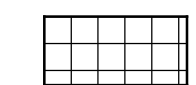
SFN	2504375
DESIGN AGENCY	
Michael Baker INTERNATIONAL	
DESIGNER	CHECKER
AJE	PJL
REVIEWER	
NCK	02/01/24
PROJECT ID	111641
SUBSET	TOTAL
6	45
SHEET	TOTAL
P.140	P.179

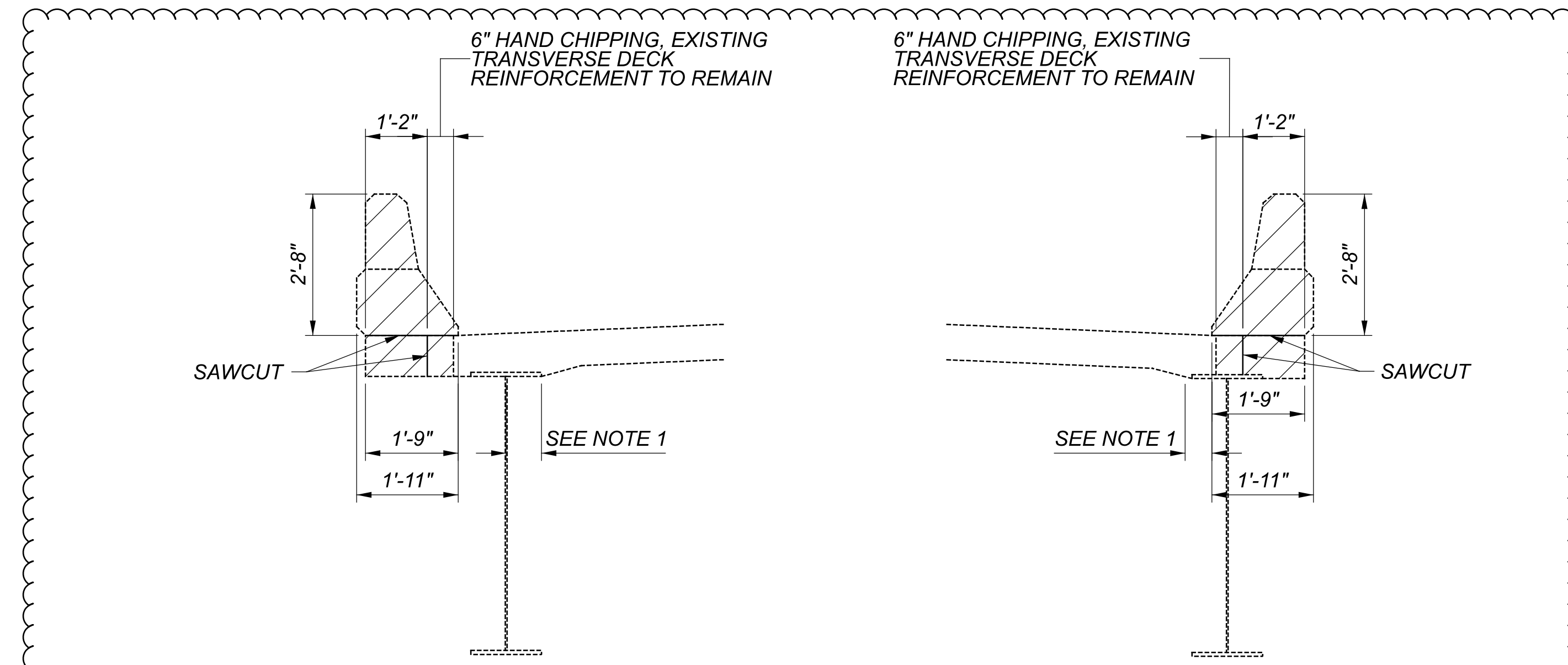


PROPOSED WORK SCHEMATIC

LEGEND

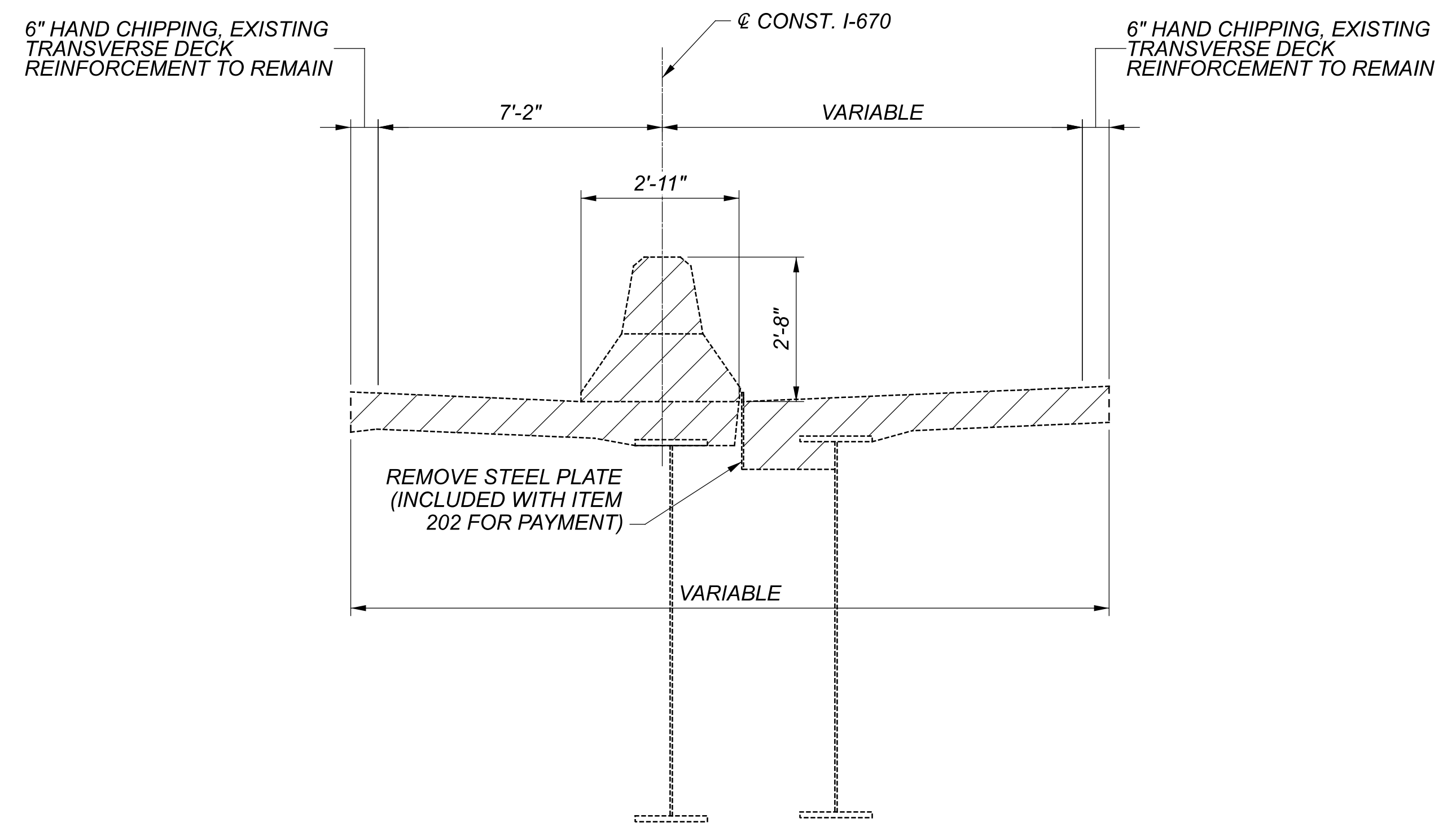
 REMOVE AND REPLACE EXISTING DECK AND RAILING

 REMOVE EXISTING 1 3/4" OVERLAY AND 1/4" DECK WITH HYDRODEMOLITION. REPLACE WITH 2" LMC OVERLAY.



WB END DECK REMOVAL SECTION
 (REMOVAL LIMITS INCLUDE APPROACH SLABS)

EB END DECK REMOVAL SECTION
 (REMOVAL LIMITS INCLUDE APPROACH SLABS)



MEDIAN REMOVAL SECTION

NOTES

1. MAINTAIN 3" MINIMUM SUPPORT DISTANCE OF EXISTING DECK OVER FLANGE. CONTRACTOR TO PROVIDE TEMPORARY DECK SUPPORT AT LOCATIONS WHERE 3" IS NOT AVAILABLE.

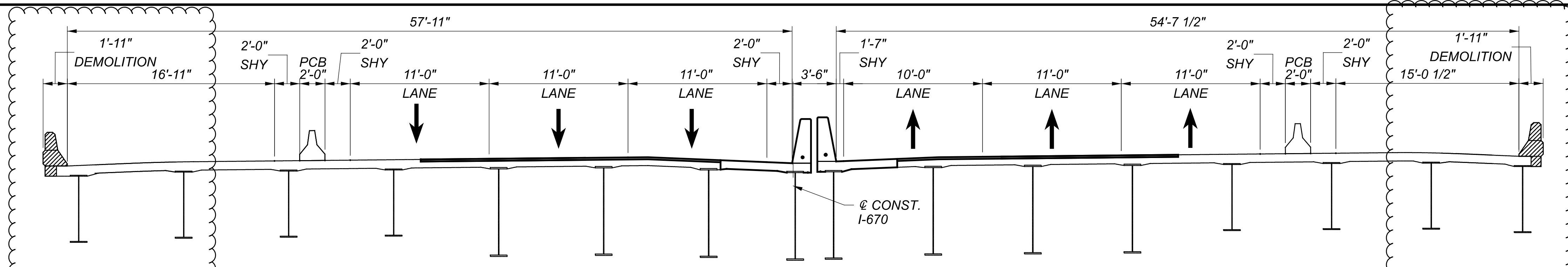
LEGEND

 REMOVAL LIMITS

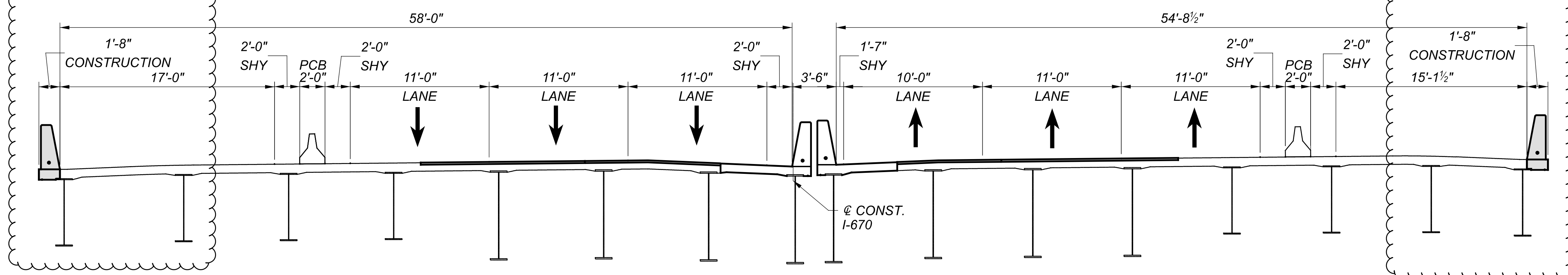
REMOVAL LIMITS
 BRIDGE NO. FRA-670-0031
 I-670 OVER CSXT, SCIOTO RIVER, EB RAMP TO I-670

SFN	2504375
DESIGN AGENCY	
DESIGNER	Michael Baker INTERNATIONAL
CHECKER	
REVIEWER	
PROJECT ID	111641
SUBSET	TOTAL
7	45
SHEET	TOTAL
P.141	P.179

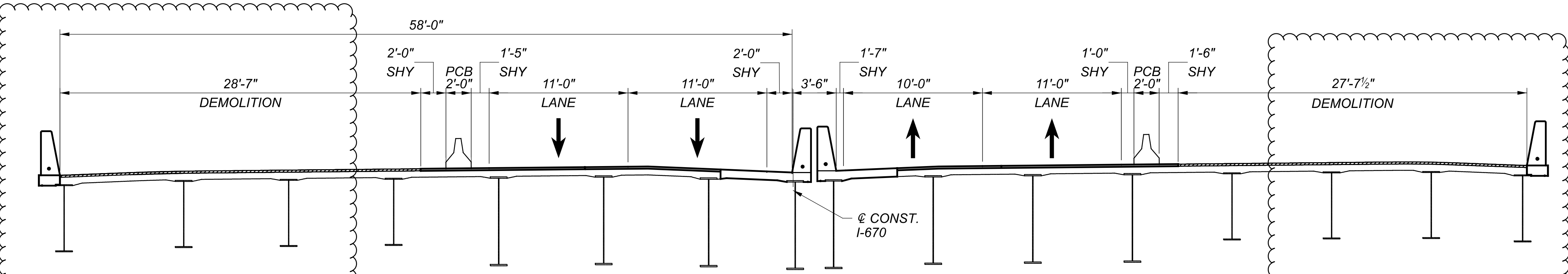
PHASE 3a: SHIFT TRAFFIC TO INSIDE MEDIAN SHOULDERS & REMOVE EXTERIOR PARAPET AS MARKED.



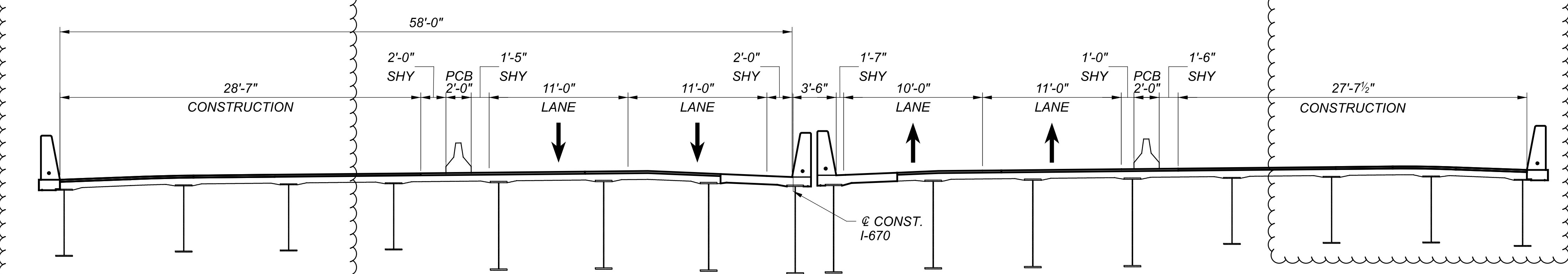
PHASE 3b: CONSTRUCT THE EXTERIOR PARAPETS.



PHASE 4a: REDUCE EASTBOUND TRAFFIC TO 2 LANES ON INSIDE MEDIAN SHOULDERS AND REMOVE DECK OVERLAY AS MARKED. SEE NOTE 4.



PHASE 4b: CONSTRUCT OVERLAY OVER PREVIOUSLY REMOVED SECTION. SEE NOTE 4.



LEGEND

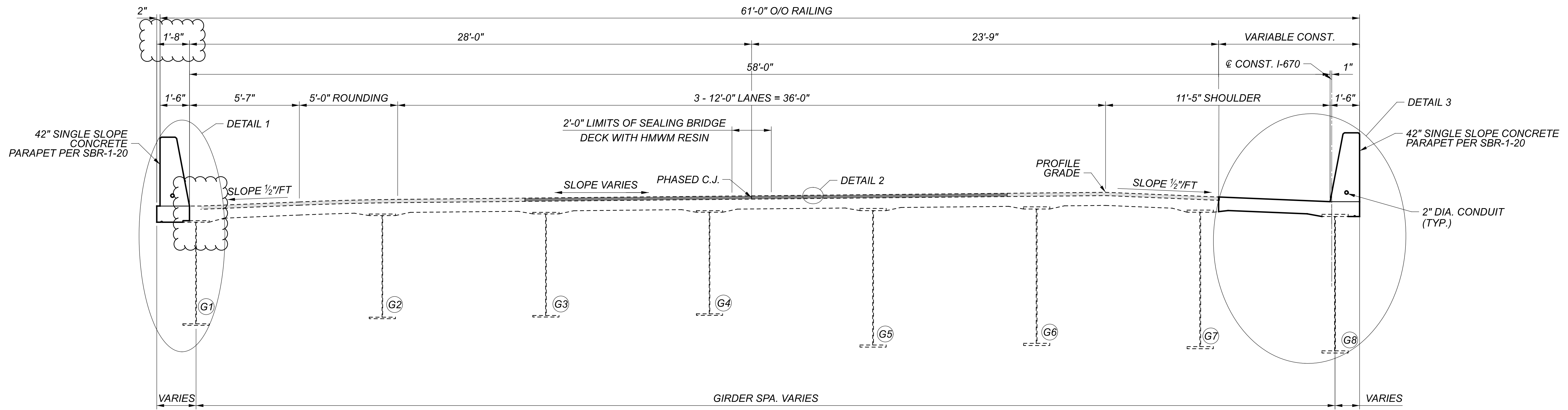
- LIMITS OF REMOVAL
- NEW CONSTRUCTION

NOTES:

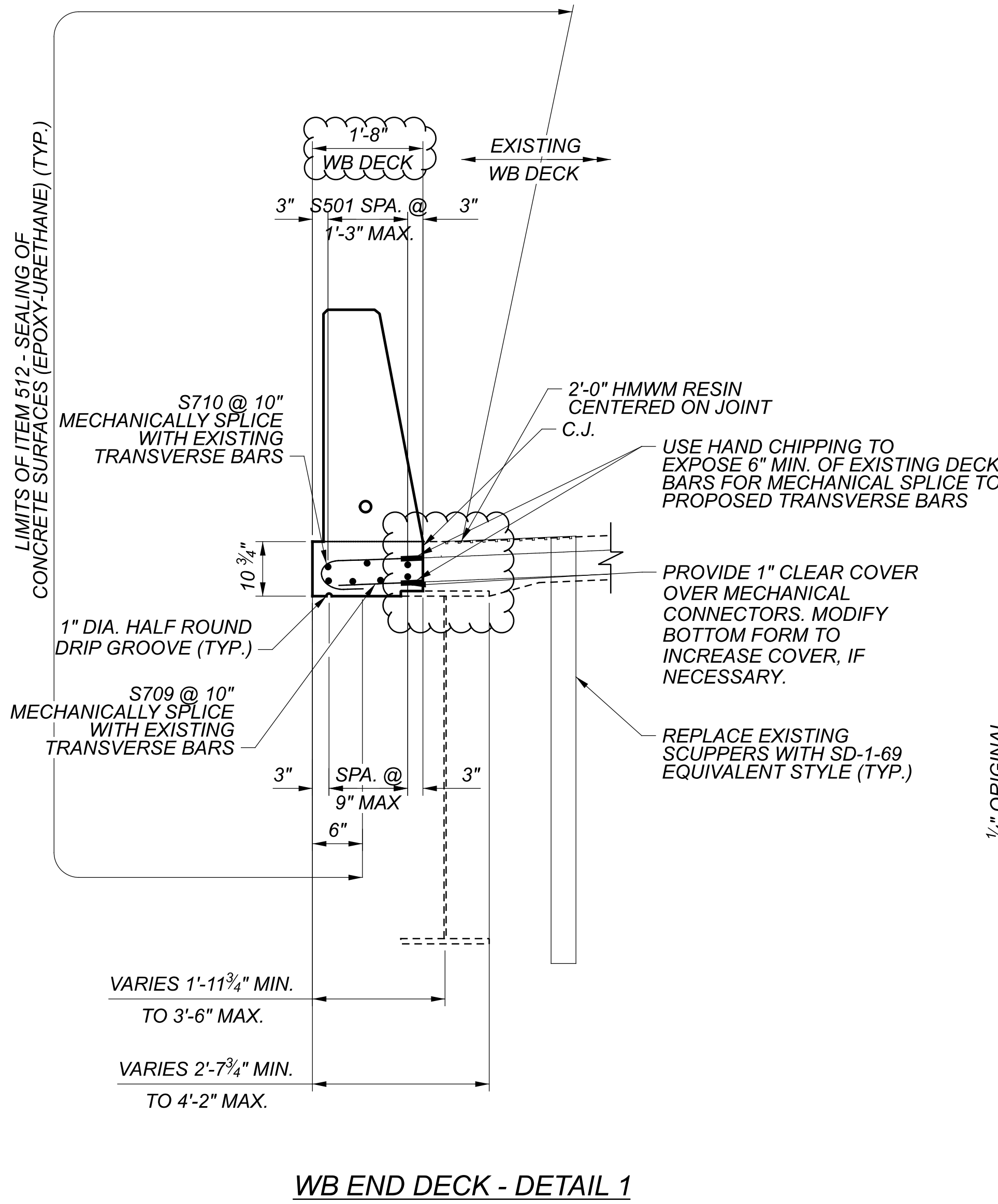
1. PAYMENT FOR PORTABLE CONCRETE BARRIER INCLUDED IN ROADWAY GENERAL SUMMARY.
2. FOR ADDITIONAL DETAILS ON PORTABLE CONCRETE BARRIER SEE STANDARD DRAWING PCB-91.
3. PIER 2A REPAIRS TO BE MADE DURING PHASE 3A-4B. SEE SHEETS 17 AND 18 OF 43 FOR DETAILS.
4. PHASES 4A AND 4B TO BE COMPLETED OVER ONE (1) 7-DAY CLOSURE PERIOD PER THE MOTEC EXCEPTION DETAILED IN THE MOT NOTES.

CONSTRUCTION SEQUENCE
 BRIDGE NO. FRA-670-0031
 I-670 OVER CSXT, SCIOTO RIVER, EB RAMP TO I-670

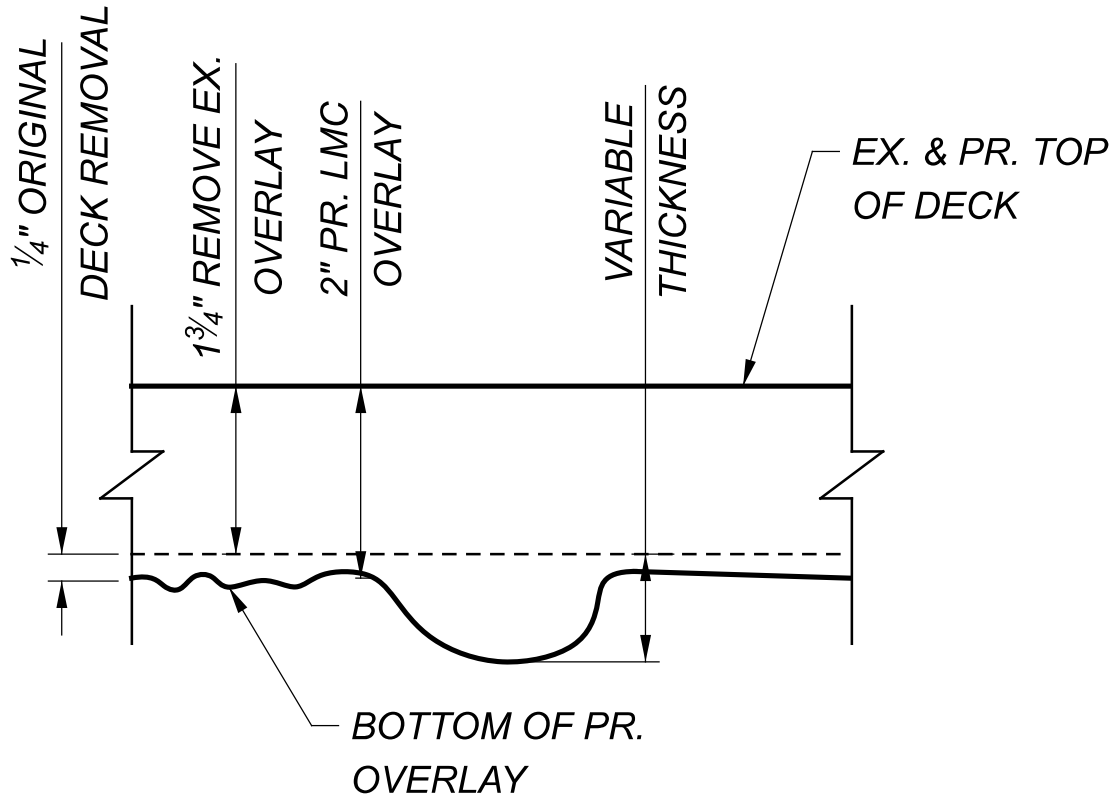
SFN	2504375
DESIGN AGENCY	
DESIGNER	Michael Baker INTERNATIONAL
CHECKER	
MS	PJL
REVIEWER	NCK
DATE	10/31/23
PROJECT ID	111641
SUBSET	TOTAL
11	45
SHEET	TOTAL
P.145	P.179



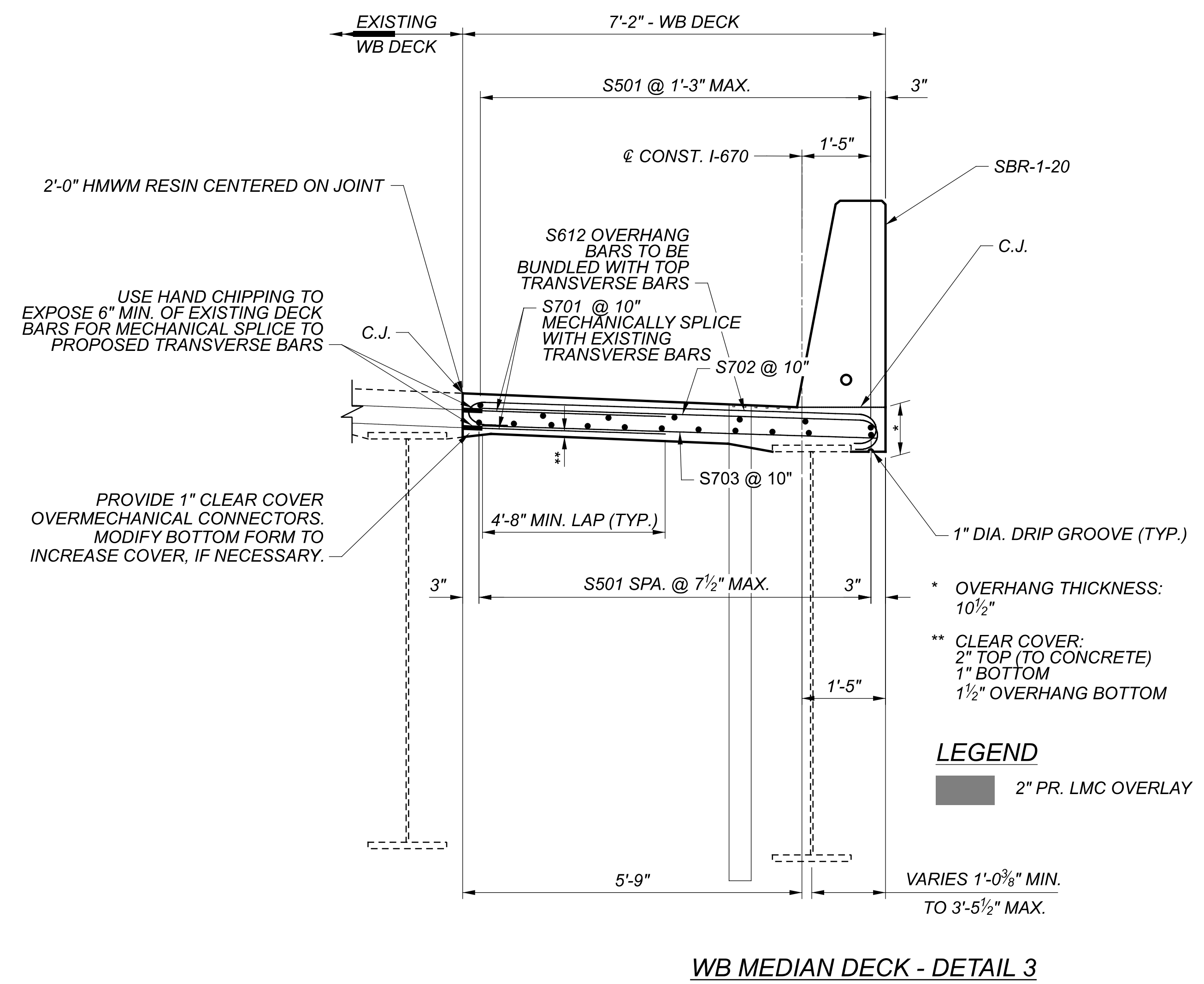
WESTBOUND TYPICAL SECTION



WB END DECK - DETAIL 1



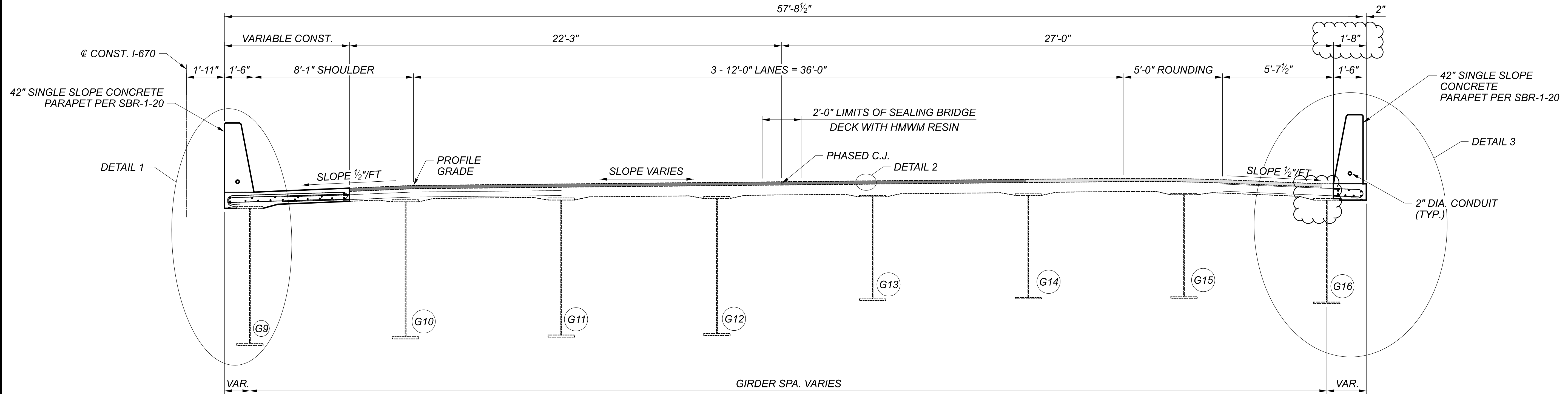
BRIDGE DECK OVERLAY - DETAIL 2



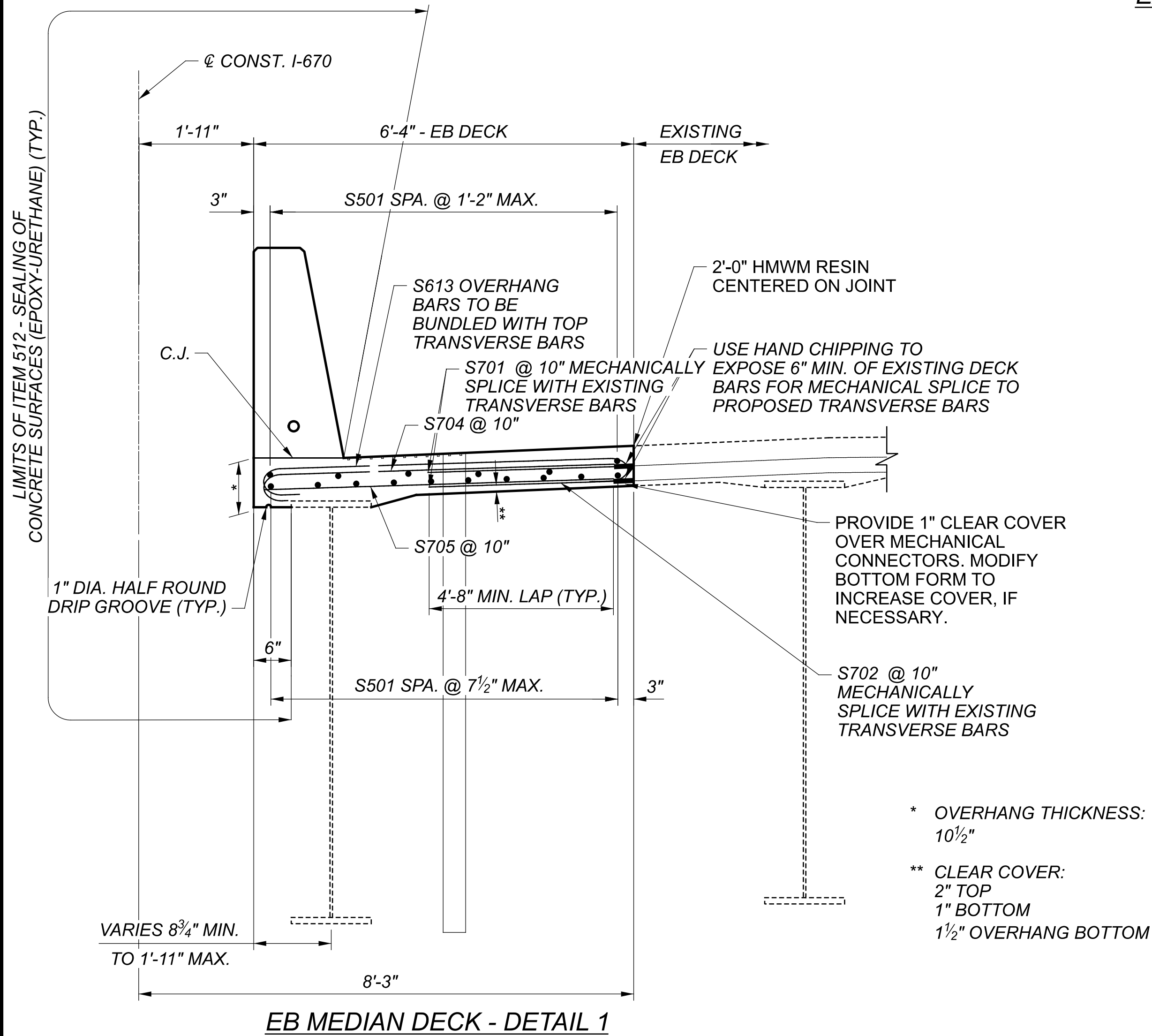
WB MEDIAN DECK - DETAIL 3

TYPICAL SECTION
 BRIDGE NO. FRA-670-0031
 I-670 OVER CSXT, SCIOTO RIVER, EB RAMP TO I-670

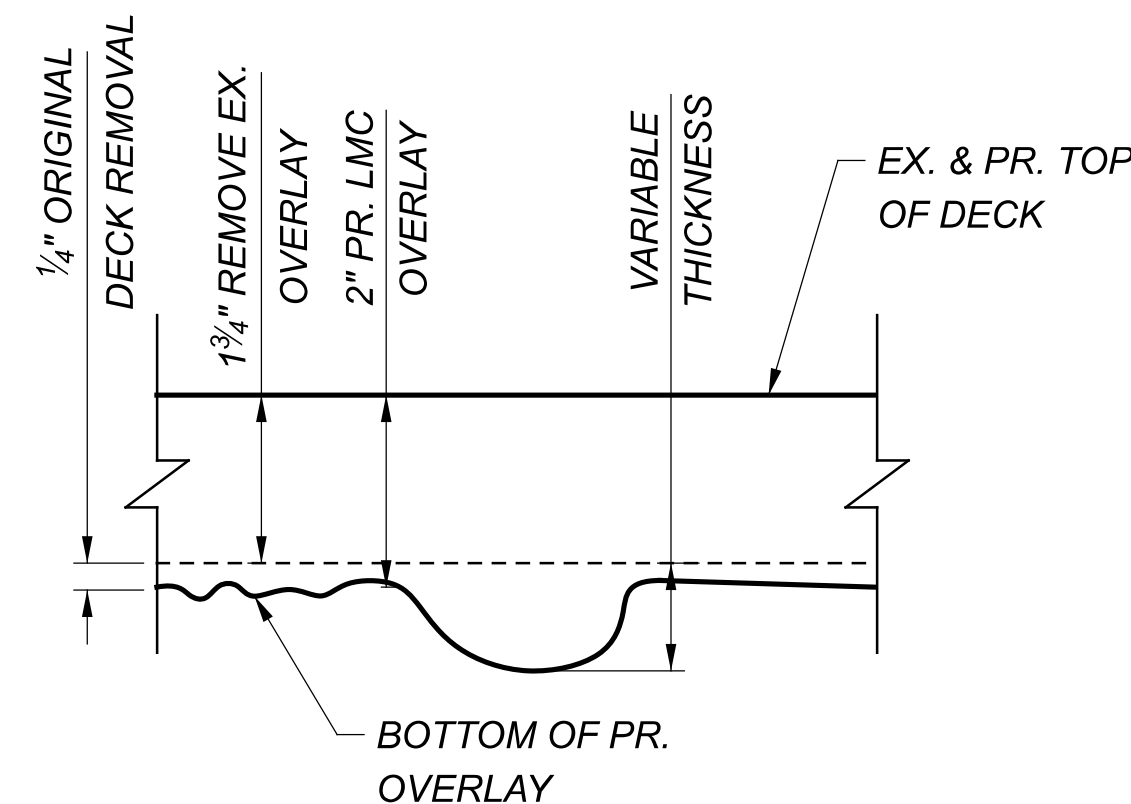
SFN	2504375
DESIGN AGENCY	
DESIGNER	Michael Baker INTERNATIONAL
CHECKER	JNR
REVIEWER	PJL
PROJECT ID	111641
SUBSET	32
TOTAL	45
SHEET	P.166
TOTAL	P.179



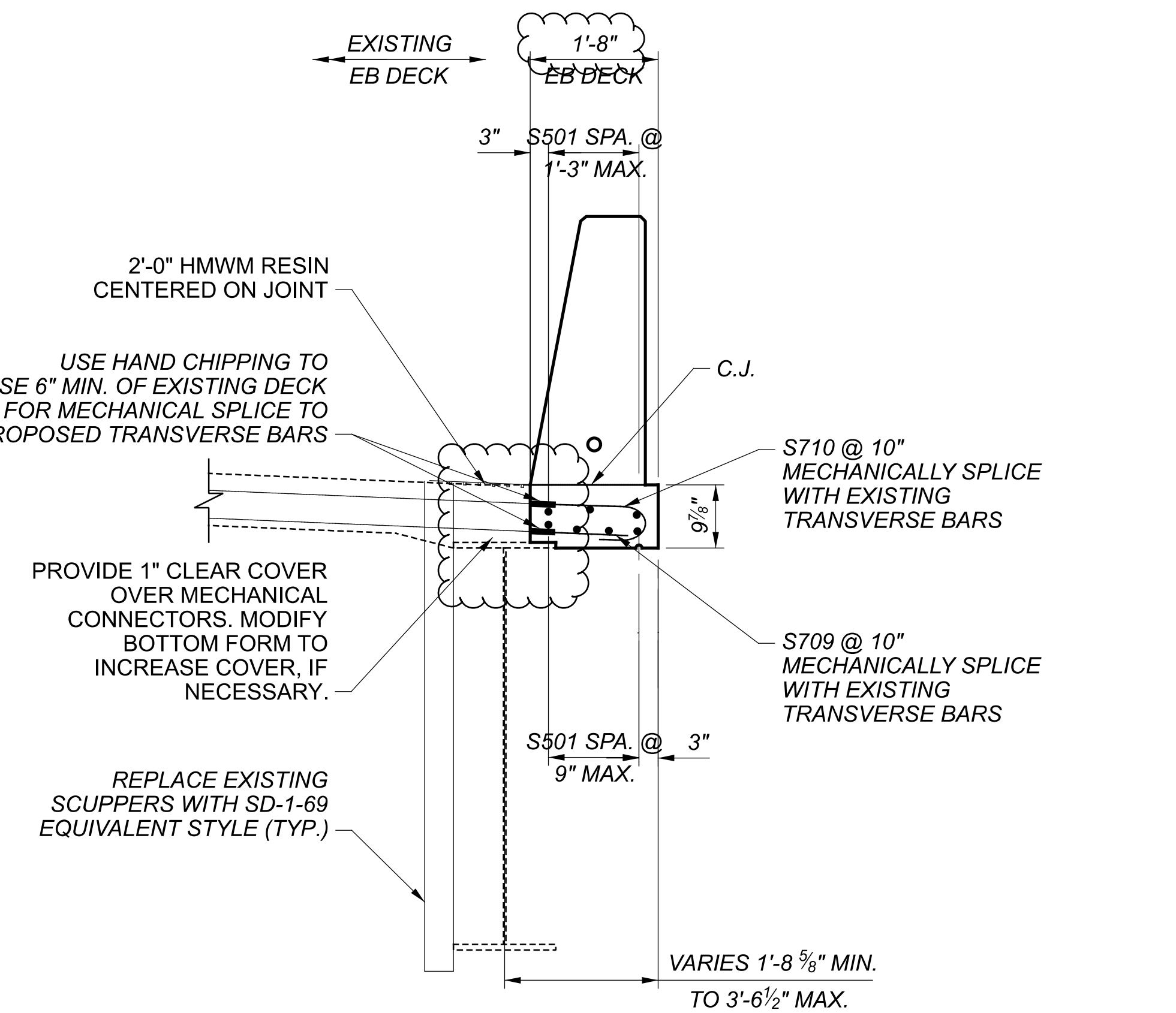
EASTBOUND TYPICAL SECTION



EB MEDIAN DECK - DETAIL 1



BRIDGE DECK OVERLAY - DETAIL 2



EB END DECK - DETAIL 3

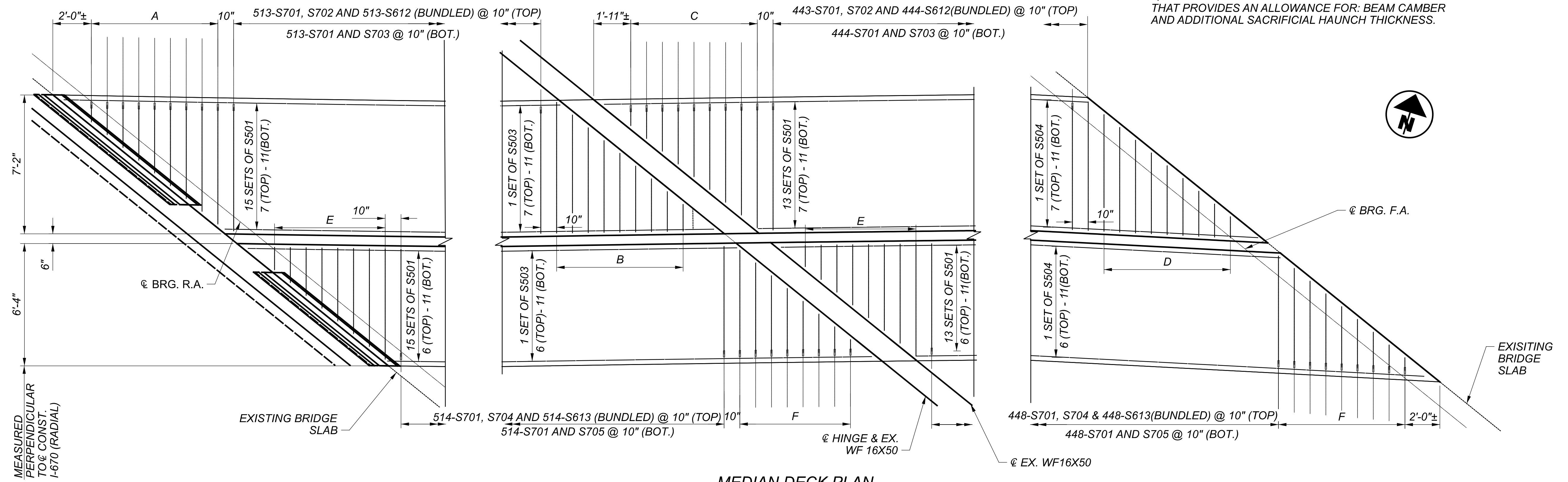
LEGEND

■ 2" PR. LMC OVERLAY

SFN	2504375
DESIGN AGENCY	
DESIGNER	MS
CHECKER	PJL
REVIEWER	NCK
DATE	10/31/23
PROJECT ID	111641
SUBSET	33
TOTAL	45
SHEET	P.167
TOTAL	P.179

DECK SLAB THICKNESS FOR CONCRETE QUANTITY

THE ESTIMATED QUANTITY OF DECK CONCRETE IS MEASURED ACCORDING TO THE C&MS 511. IN ADDITION TO THE DESIGN SLAB THICKNESS OF 9 INCHES, THE QUANTITY INCLUDES A VARIABLE HAUNCH THICKNESS THAT PROVIDES AN ALLOWANCE FOR BEAM CAMBER AND ADDITIONAL SACRIFICIAL HAUNCH THICKNESS.



MIN. BAR LAP

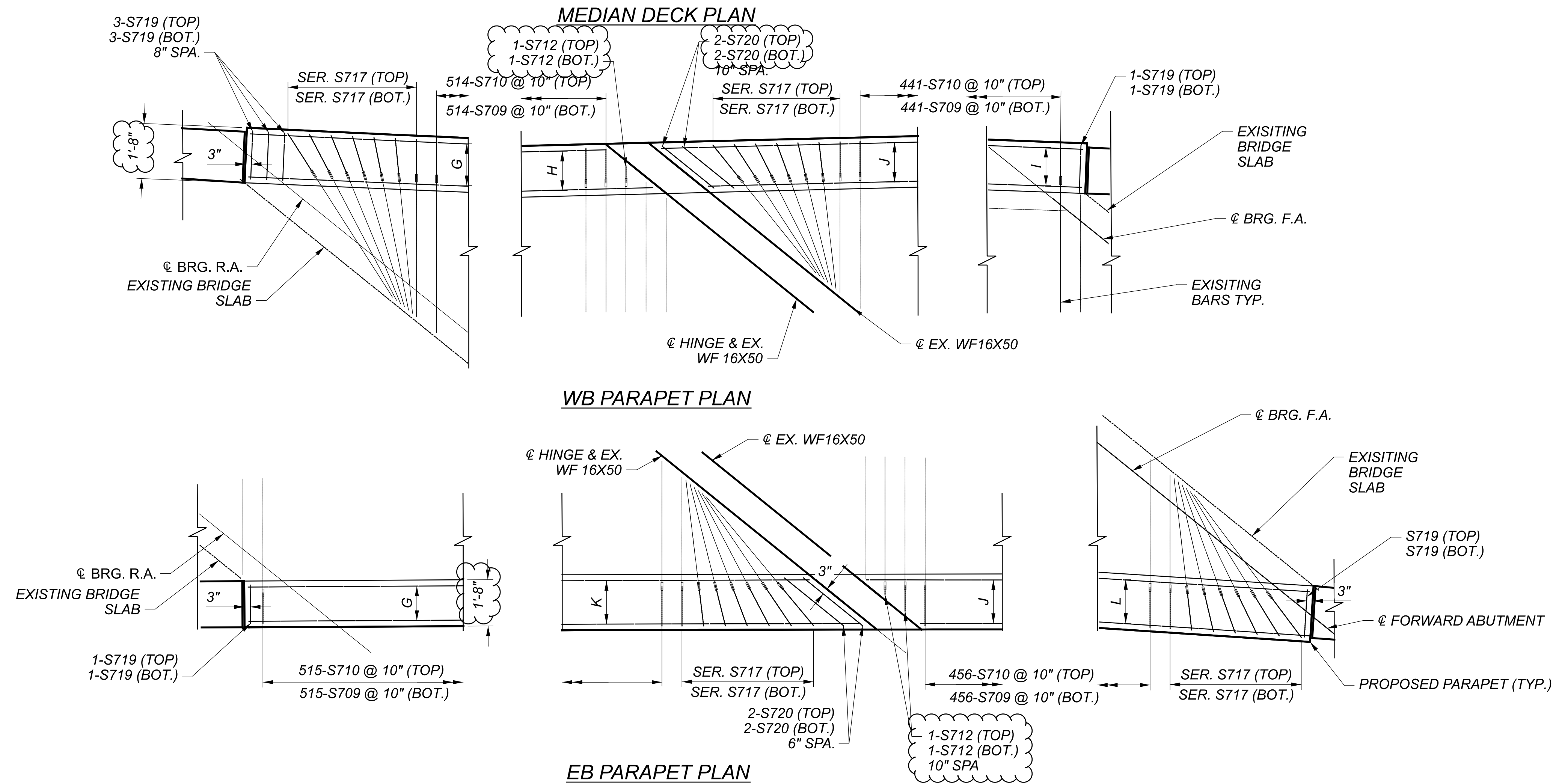
#5 - 2'-5"

LEGEND:

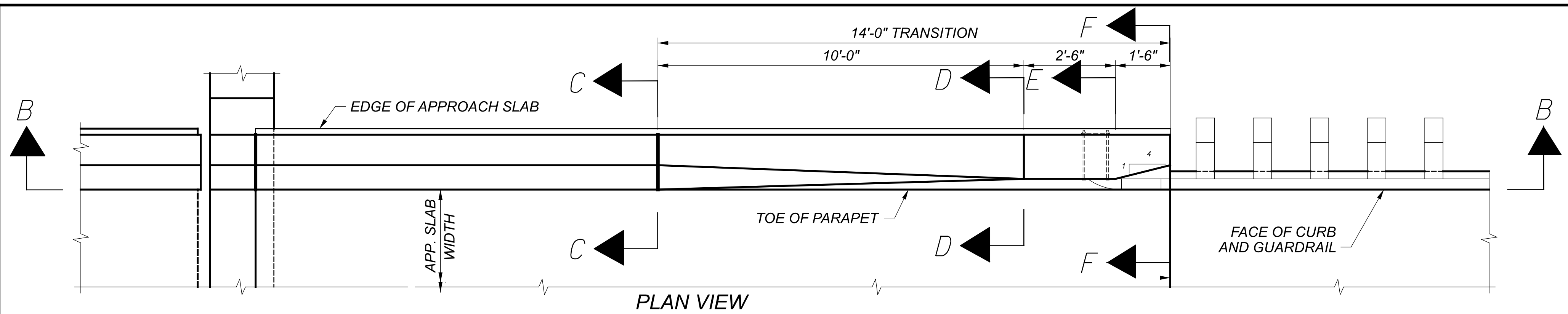
- A : 8 SPACES @ 10" = 6'-8" SER OF S706 TOP AND BOTTOM WITH MECHANICAL CONNECTORS BUNDLED WITH SER OF S614 OVERHANG BARS
- B : 8 SPACES @ 10" = 6'-8" SER OF S707 TOP AND BOTTOM
- C : 8 SPACES @ 10" = 6'-8" SER OF S708 TOP AND BOTTOM WITH MECHANICAL CONNECTORS BUNDLED WITH SER OF S616 OVERHANG BARS
- D : 8 SPACES @ 10" = 6'-8" SER OF S714 TOP AND BOTTOM
- E : 7 SPACES @ 10" = 5'-10" SER OF S718 TOP AND BOTTOM
- F : 7 SPACES @ 10" = 5'-10" SER OF S713 TOP AND BOTTOM WITH MECHANICAL CONNECTORS BUNDLED WITH SER OF S619 OVERHANG BARS
- G : 15 SETS OF S501: 3 (TOP) - 4 (BOT.)
- H : 1 SET OF S505: 3 (TOP) - 4 (BOT.)
- I : 1 SET OF S506: 3 (TOP) - 4 (BOT.)
- J : 13 SETS OF S501: 3 (TOP) - 4 (BOT.)
- K : 1 SET OF S507: 3 (TOP) - 4 (BOT.)
- L : 1 SET OF S508: 3 (TOP) - 4 (BOT.)

NOTES:

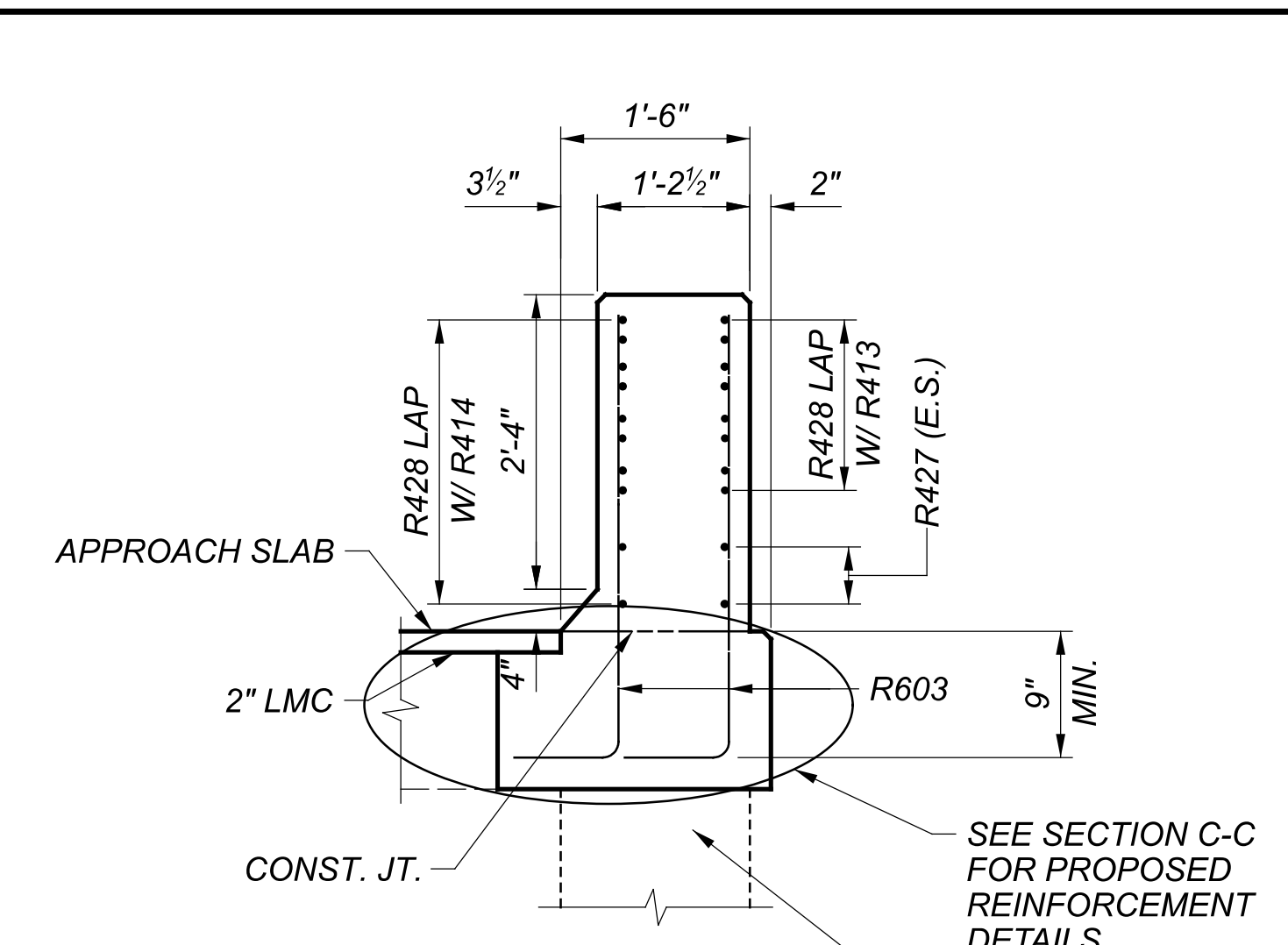
1. CONTRACTOR TO ADJUST BAR LENGTH BASED ON SELECTED MECHANICAL CONNECTOR.
2. FOR TRANSVERSE SECTION SEE SHEET 29 AND 30 OF 42.
3. TRANSVERSE BAR SPACING SHOWN BASED ON RECORD PLANS. CONTRACTOR TO MATCH EXISTING BARS FOUND.



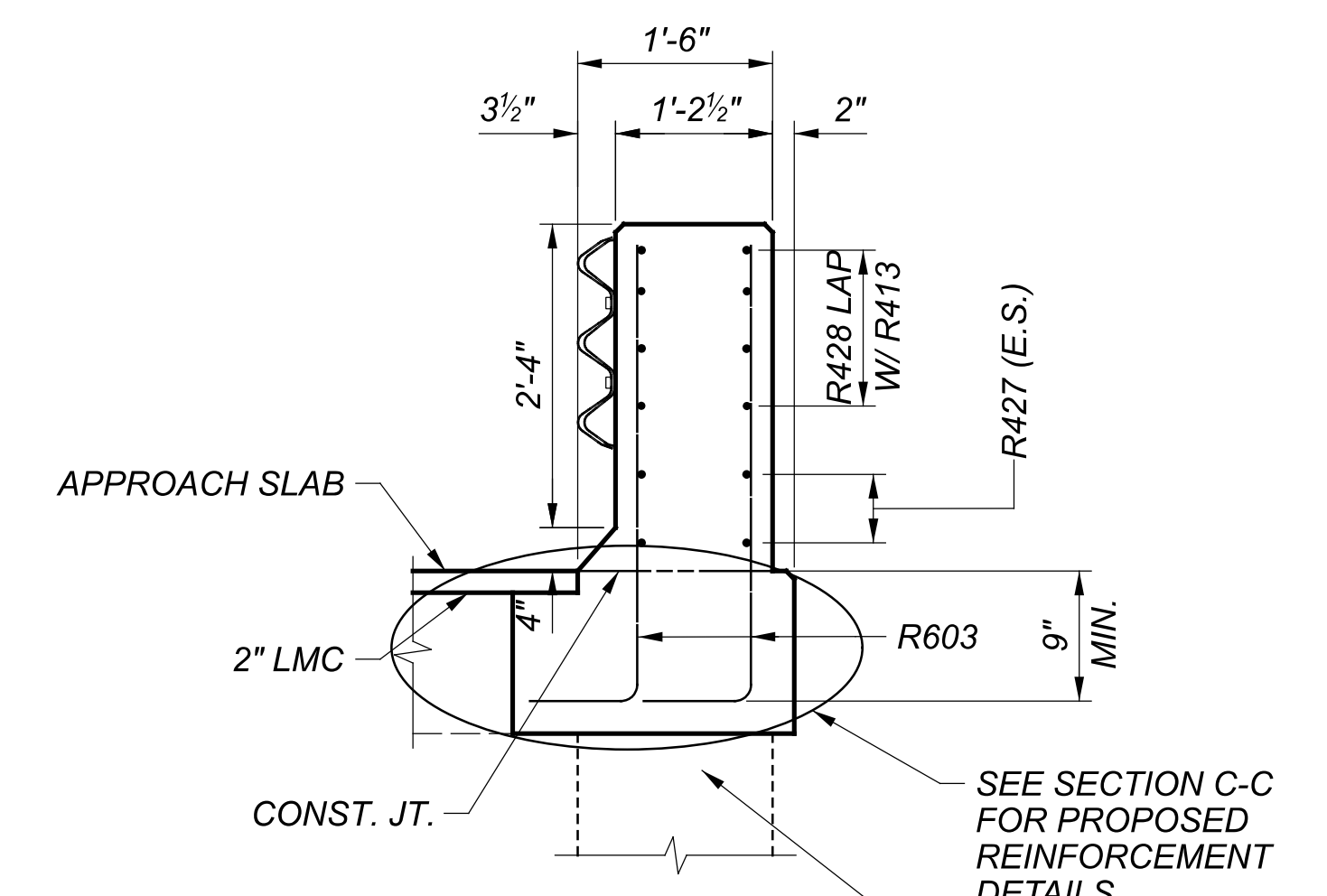
SFN	2504375
DESIGN AGENCY	
DESIGNER	Michael Baker INTERNATIONAL
CHECKER	JMM
REVIEWER	PJL
PROJECT ID	111641
SUBSET	34
TOTAL	45
SHEET	P.168
TOTAL	P.179



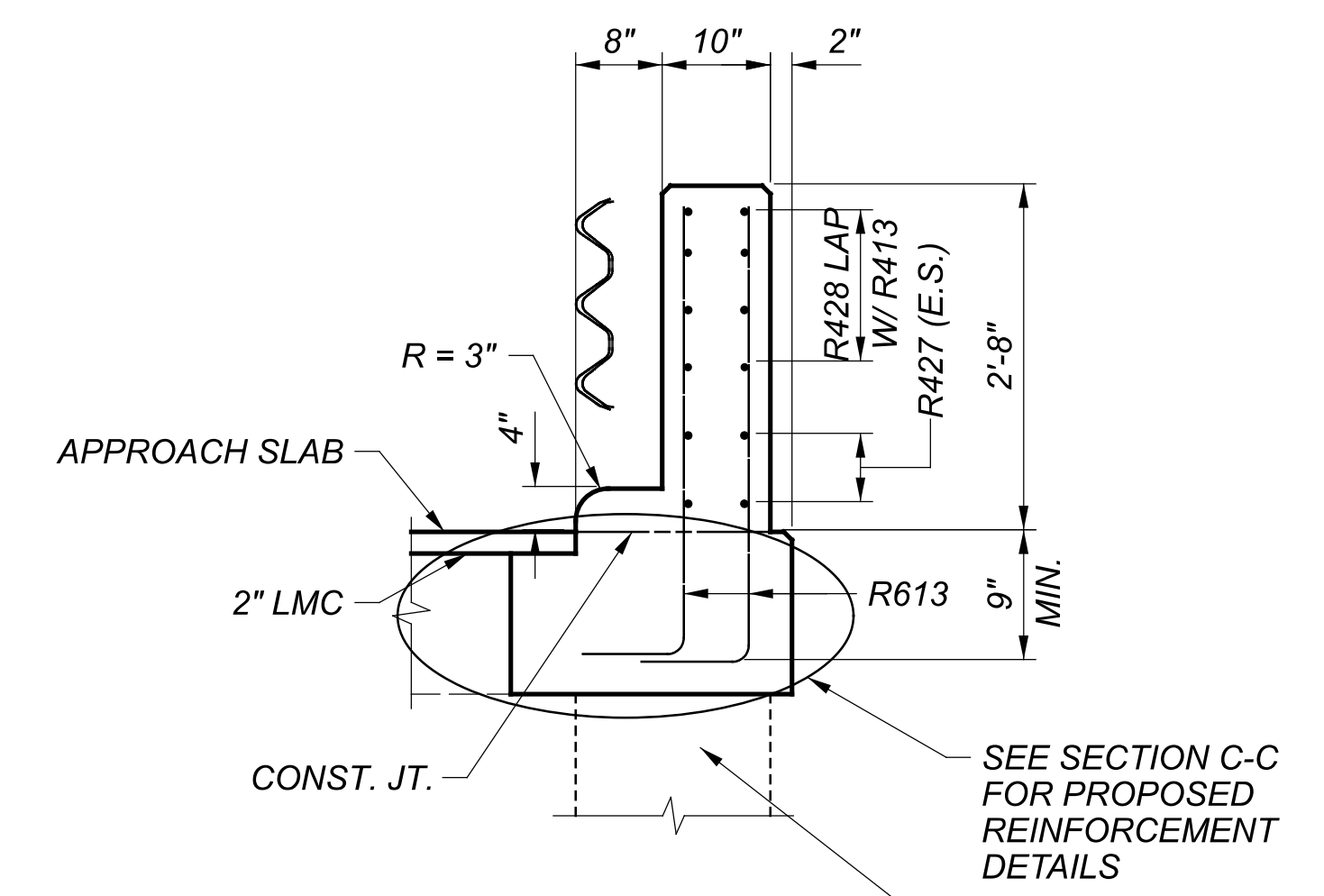
42" SBR-1-20 TRANSITION MOUNTED ON APPROACH SLAB WITH TYPICAL ABUTMENT SHOWN



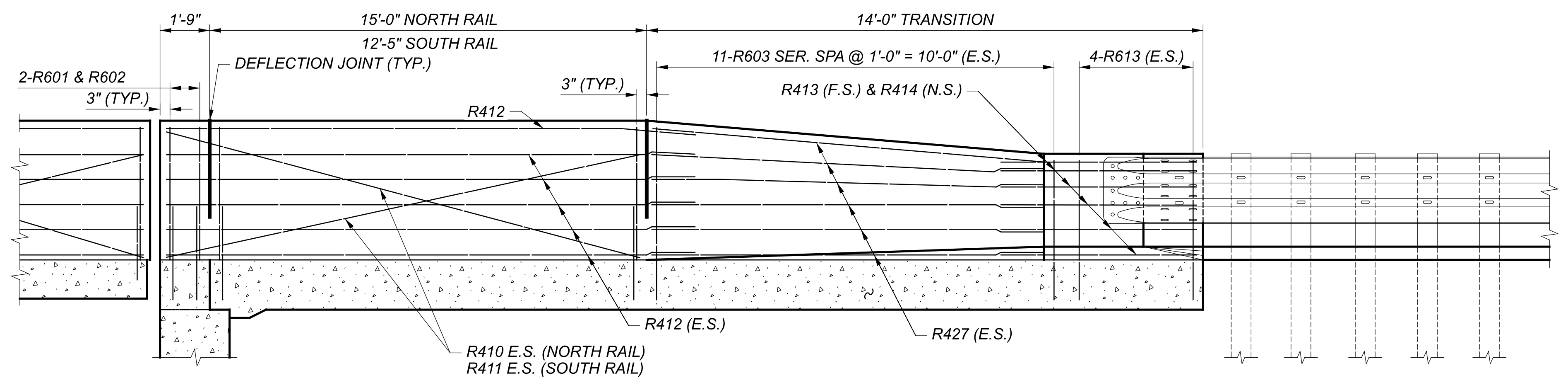
SECTION D-D



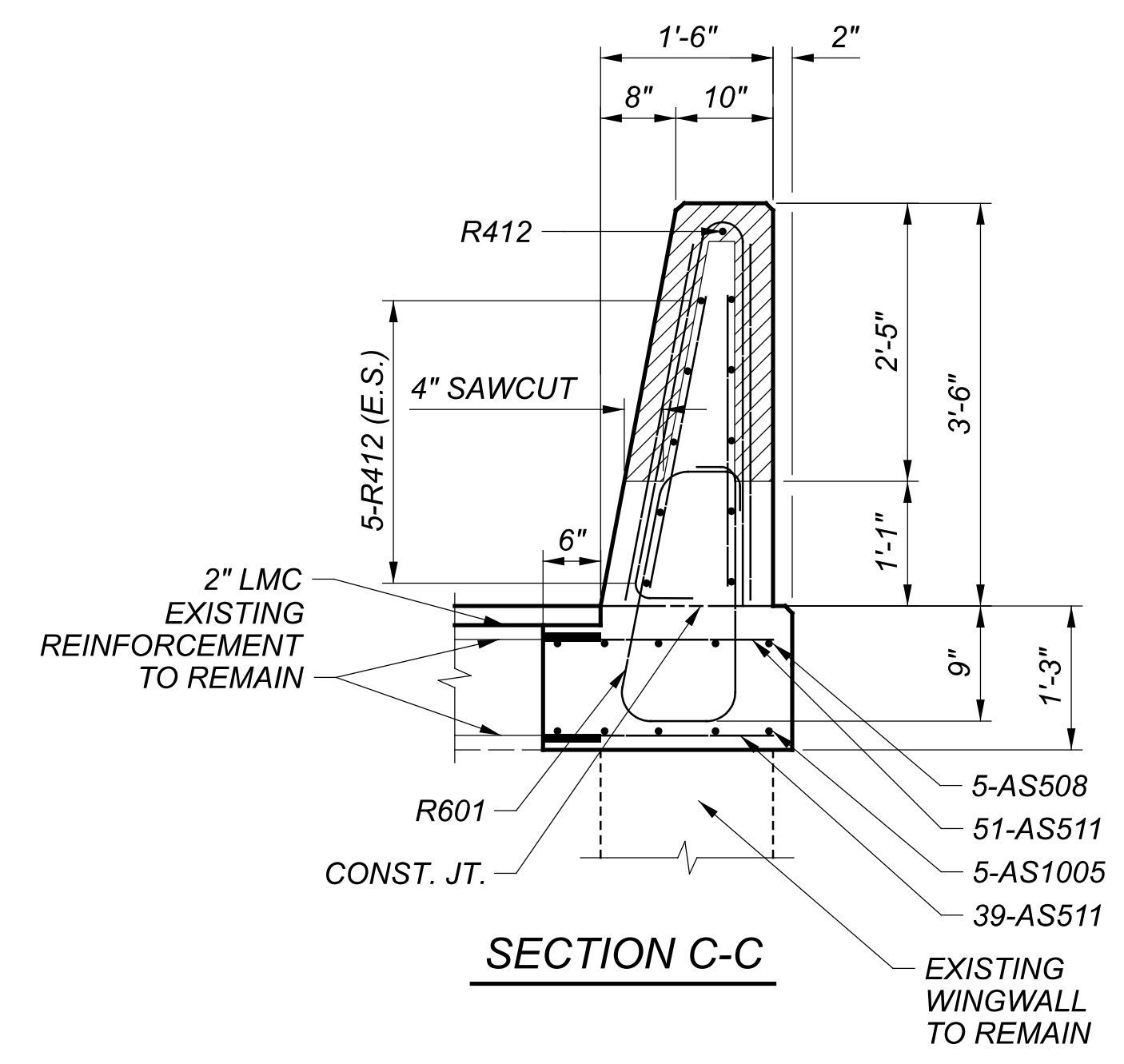
SECTION E-E



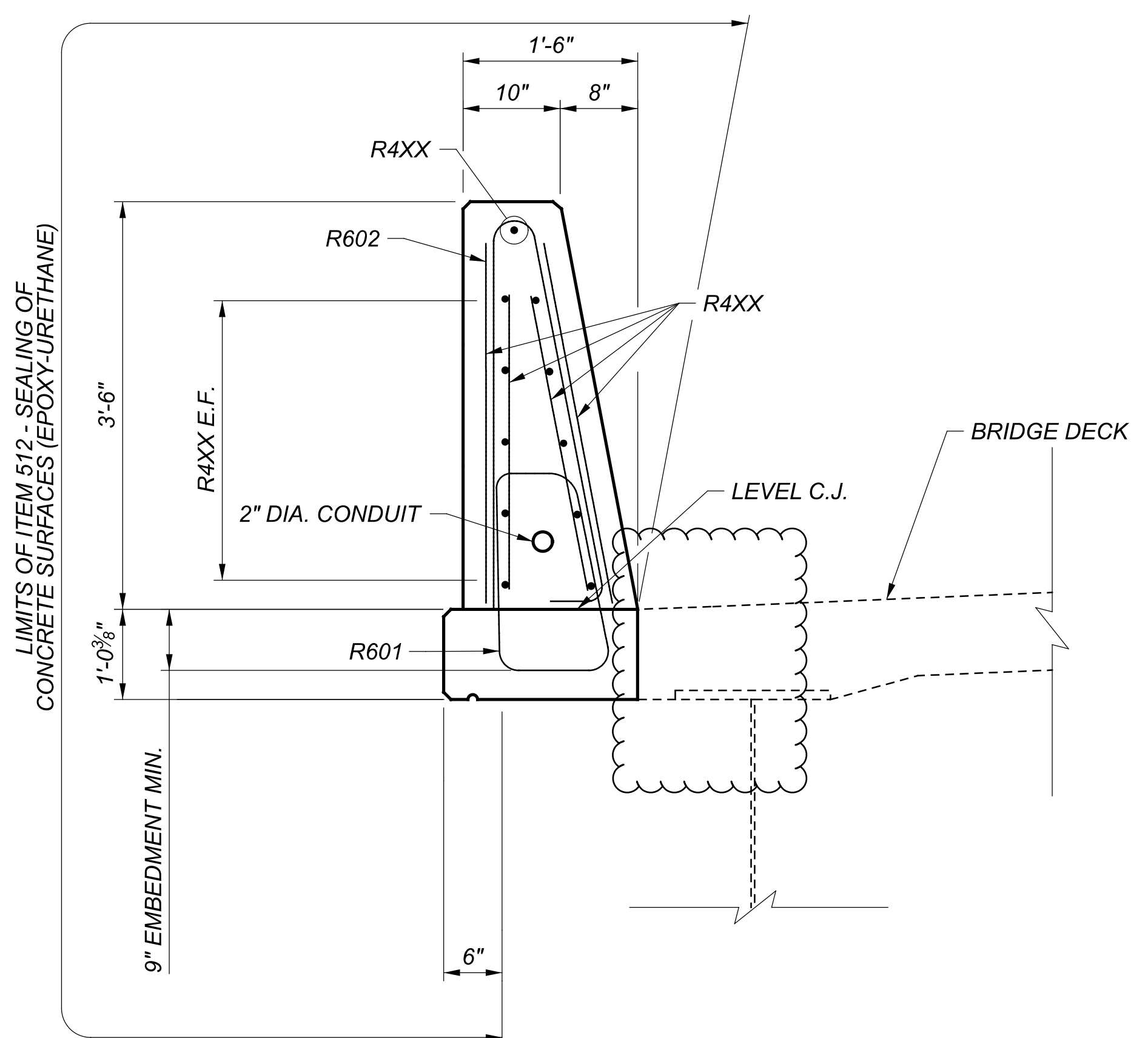
SECTION F-F



SECTION B-B



SECTION C-C



SECTION A-A

NOTE:
 1. SEE STANDARD DRAWING SBR-1-20 FOR ADDITIONAL DETAILS.

OUTSIDE PARAPET DETAILS
 BRIDGE NO. FRA-670-0031
 I-670 OVER CSXT, SCIOTO RIVER, EB RAMP TO I-670

SFN	2504375
DESIGN AGENCY	
DESIGNER	JNR
CHECKER	PJL
REVIEWER	NCK
DATE	10/31/23
PROJECT ID	111641
SUBSET	40
TOTAL	45
SHEET	P.174
TOTAL	P.179

MARK	NUMBER TOTAL	LENGTH	WEIGHT (LBS.)	TYPE	DIMENSIONS						SER INC.
					A	B	C	D	E	R	
FORWARD AND REAR ABUTMENTS											
A503	54	2'-6"	141	2							
A504	54	4'-0"	225	2							
A505	14	7'-3"	106	STR.							
A506	14	18'-2"	265	STR.							
A507	14	6'-3"	91	STR.							
A801	54	7'-1"	1027	1							
ABUTMENT SUBTOTAL			1855								

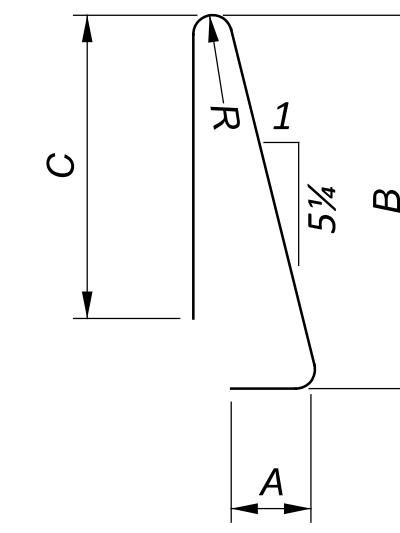
MARK	NUMBER TOTAL	LENGTH	WEIGHT (LBS.)	TYPE	DIMENSIONS						SER INC.
					A	B	C	D	E	R	
EASTBOUND AND WESTBOUND DECKS (MEDIAN AND FASCIA)											
S501	1372	30'-0"	42930	STR.							
S503	35	24'-3"	885	STR.							
S504	35	23'-0"	840	STR.							
S505	7	26'-8"	195	STR.							
S506	7	17'-4"	127	STR.							
S507	7	22'-0"	161	STR.							
S508	7	28'-9"	210	STR.							
S612	957	8'-2"	11739	17	6'-10"						
S613	962	7'-4"	10596	17	6'-0"						
S614	SER. OF 9	3'-8"	49	STR.	6'-3"						7 7/8"
S616	SER. OF 9	5'-4"	72	17	6'-8"						8 1/8"
S619	SER. OF 8	4'-7"	110	17	5'-5"						7 9/16"
S701	3838	4'-10"	37917	STR.							
S702	957	7'-8"	14997	16	6'-10"						
S703	957	6'-10"	13367	STR.							
S704	962	6'-10"	13437	16	6'-0"						
S705	962	6'-0"	11798	STR.	1'-0"						
S706	SER. OF 9	3'-8"	133	STR.	6'-3"						7 7/8"
S707	SER. OF 9	4'-2"	152	STR.	6'-10"						8 1/8"
S708	SER. OF 9	4'-0"	146	STR.	6'-8"						8 1/8"
S709	1926	1'-6"	5905	STR.	6'-8"						
S710	1926	2'-4"	9186	16	1'-6"						
S712	4	7'-1"	9	STR.	1'-0"						
S713	SER. OF 8	3'-3"	210	STR.	5'-5"						7 9/16"
S714	SER. OF 9	4'-0"	147	STR.	1'-2"						8 1/2"
S717	SER. OF 7	1'-10"	210	STR.	6'-10"						13/16"
S718	SER. OF 8	3'-7"	232	STR.	1'-6"						7 7/8"
S719	12	1'-4"	33	STR.	2'-1"						
S720	8	1'-10"	30	STR.	1'-3"						
DECK SUBTOTAL			175819	LBS.							

MARK	NUMBER TOTAL	LENGTH	WEIGHT (LBS.)	TYPE	DIMENSIONS						SER INC.
					A	B	C	D	E	R	
EASTBOUND AND WESTBOUND PARAPETS											
S601	3649	7'-2"	39279	35	0'-9"						
S602	3649	7'-1"	38799	23	0'-6"	3'-3"				0'-2"	
S603	44	4'-5"	295	1	1'-0"	3'-8"					
S604	42	3'-2"	200	14	1'-0"	0'-11"	0'-8"	0'-6"	0'-7"		
S605	42	4'-5"	281	1	1'-0"	3'-8"					
S606	42	3'-1"	195	16	2'-5"						
S607	100	6'-2"	927	14	1'-0"	0'-9"	3'-4"	0'-8"	1'-3"		
S608	16	7'-2"	172	14	1'-0"	0'-9"	3'-4"	0'-8"	2'-3"		
S609	4	7'-8"	46	14	1'-0"	0'-9"	3'-4"	0'-8"	2'-9"		
S613	16	4'-1"	98	1	1'-0"	3'-3"					
PARAPET SUBTOTAL			80292	LBS.							

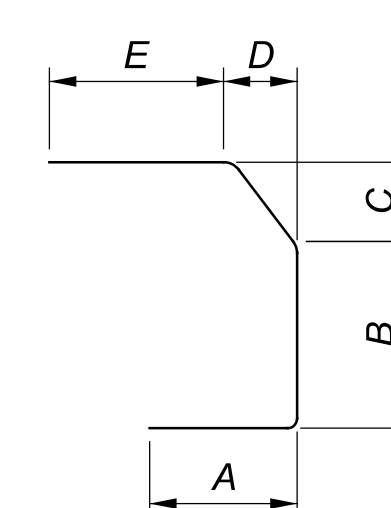
MARK	NUMBER TOTAL	LENGTH	TOTAL LENGTH	WEIGHT (LBS.)	TYPE	DIMENSIONS						SER INC.
						A	B	C	D	E	R	
EASTBOUND AND WESTBOUND PARAPETS (GFRP ONLY)												
R401	176	28.58	5030.67		STR.							
R402	154	28.00	4312.00		STR.							
R403	176	28.25	4972.00		STR.							
R404	154	28.75	4427.50		STR.							
R405	8	12.83	102.67		STR.							
R406	1248	10.00	12480.00		STR.							
R407	8	10.33	82.67		STR.							
R408	8	13.00	104.00		STR.							
R409	8	13.67	109.33		STR.							
R410	4	16.50	66.00		STR.							
R411	4	14.00	56.00		STR.							
R412	22	17.50	385.00		STR.							
R413	12	5.08	61.00		STR.							
R414	12	6.33	76.00	25	2	2'-5"	1'-5"	0'-1"	0'-5"			
R415	8	7.00	56.00		STR.							
R416	6	24.25	145.50		STR.							
R417	6	28.75	172.50		STR.							
R418	2	24.50	49.00		STR.							
R419	2	29.00	58.00		STR.							
R420	24	0.83	20.00		STR.							
R421	6	24.08	144.50		STR.							
R422	6	27.17	163.00		STR.							
R423	2	24.33	48.67		STR.							
R424	2	27.00	54.00		STR.							
R425	638	29.33	18714.67		STR.							
R426	16	14.17	226.67		STR.							
R427	24	10.00	240.00		STR.							
R501	22	8.83	194.33		STR.							
R502	24	19.67	472.00		STR.							
GRFP SUBTOTAL			53023.67									

MARK	NUMBER TOTAL	LENGTH	WEIGHT (LBS.)	TYPE	DIMENSIONS						SER INC.
					A	B	C	D	E	R	
FORWARD AND REAR APPROACH SLAB (FOR INFORMATION ONLY)											
AS505	22	5'-0"	115	STR.							
AS506	28	24'-10"	725	STR.							
AS507	180	22'-2"	4162	STR.							
AS508	48	24'-9"	1239	STR.							
AS510	4	6'-0"	25	STR.							
AS511	360	2'-0"	751	STR.							
AS1002	9	7'-5"	287	STR.							
AS1005	68	26'-2"	7657	16	24'-9"						
APPROACH SLAB SUBTOTAL			14961								

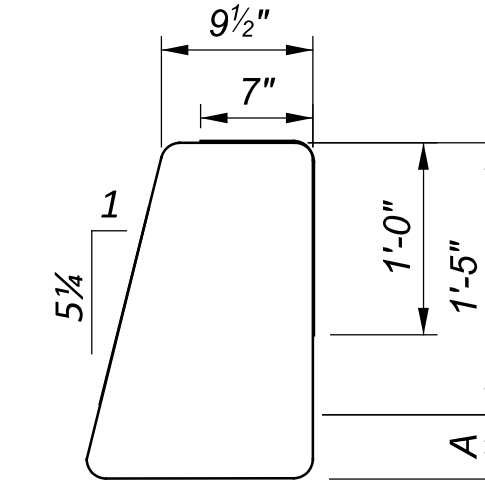
MARK	NUMBER TOTAL	LENGTH	WEIGHT (LBS.)	TYPE	DIMENSIONS						SER INC.
					A	B	C	D	E	R	
PIER											
P501	32	14'-0"	467	STR.							
P1001	15	31'-0"	2001	STR.							
P1002	15	8'-0"	516	STR.							
P1003	15	6'-8"	430	1	6'-0"	1'-0"					
PIER SUBTOTAL			3414								



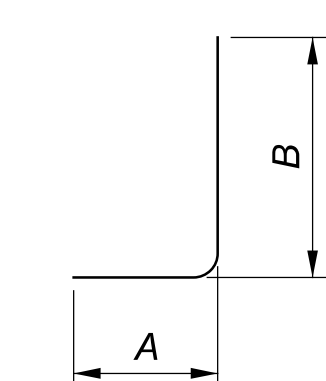
TYPE-23



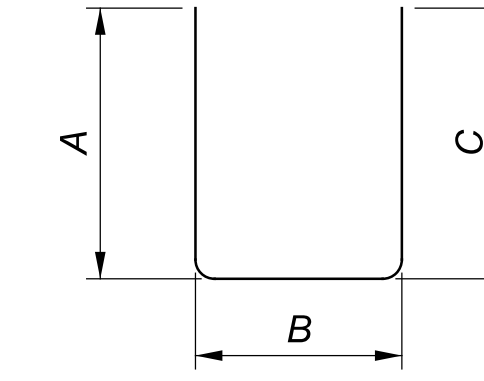
TYPE-14



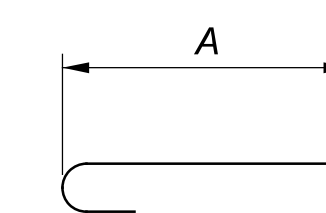
TYPE-35



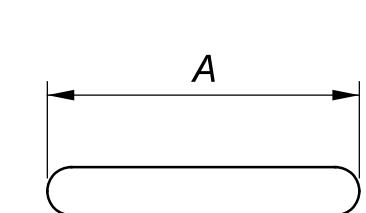
TYPE-1



TYPE-2



TYPE-16



TYPE-17

NOTES

- ALL BARS SHALL BE EPOXY COATED, UNLESS OTHERWISE NOTED.
- LENGTHS ARE RECORDED IN FEET - INCHES.
- TYPE "STR" INDICATES STRAIGHT BAR.
- REFER TO C&MS SEC. 509.05 FOR STANDARD BEND DIMENSION
- THE BAR SIZE NUMBER IS SPECIFIED IN THE "MARK" COLUMN. THE FIRST DIGIT INDICATES THE BAR SIZE NUMBER. FOR EXAMPLE, EA501 IS A #5 BAR SIZE.
- R INDICATES INSIDE RADIUS, UNLESS OTHERWISE NOTED.
- USE STANDARD HOOKS FOR ENDS OF BARS NOT SPECIFICALLY DIMENSIONED IN DETAILS.
- SUBTOTALS AND TOTAL WEIGHTS ARE FOR INFORMATIONAL PURPOSES ONLY. IF THE REINFORCING LIST PROVIDED IN THE PLANS IS USED IT SHALL BE VERIFIED BY THE CONTRACTOR. ANY REVISIONS IN THE REINFORCING STEEL LIST AS SHOWN IN THE PLANS WILL NOT BE REASON FOR ADJUSTMENT IN THE BID PRICE FOR STRUCTURAL CONCRETE.

SFN	2504375
DESIGN AGENCY	
Michael Baker INTERNATIONAL	
DESIGNER/CHECKER	AYW / PJL
REVIEWER	NCK 02/01/24
PROJECT ID	11641
SUBSET	45 / 45
SHEET	P.179 / P.179