

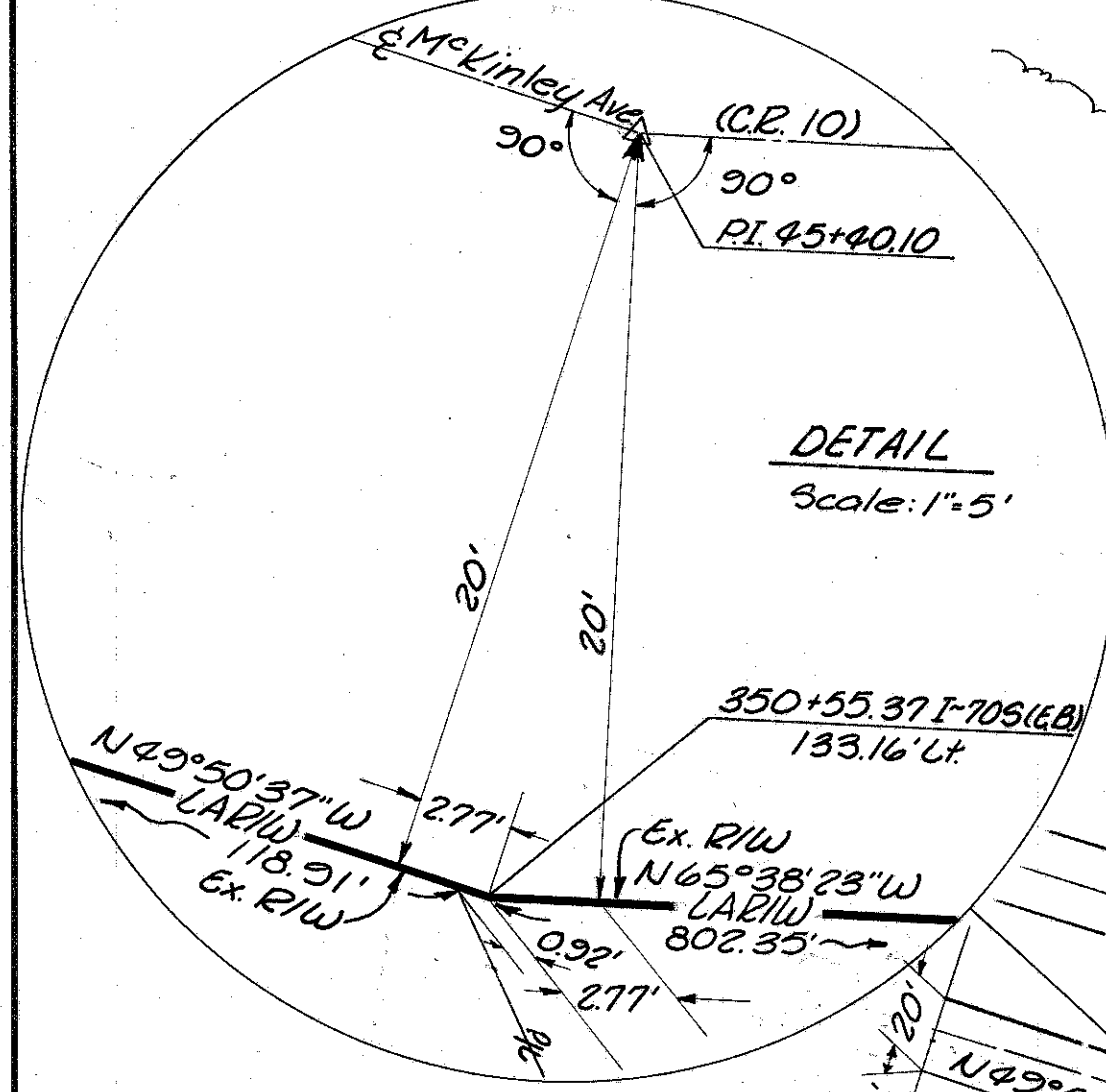
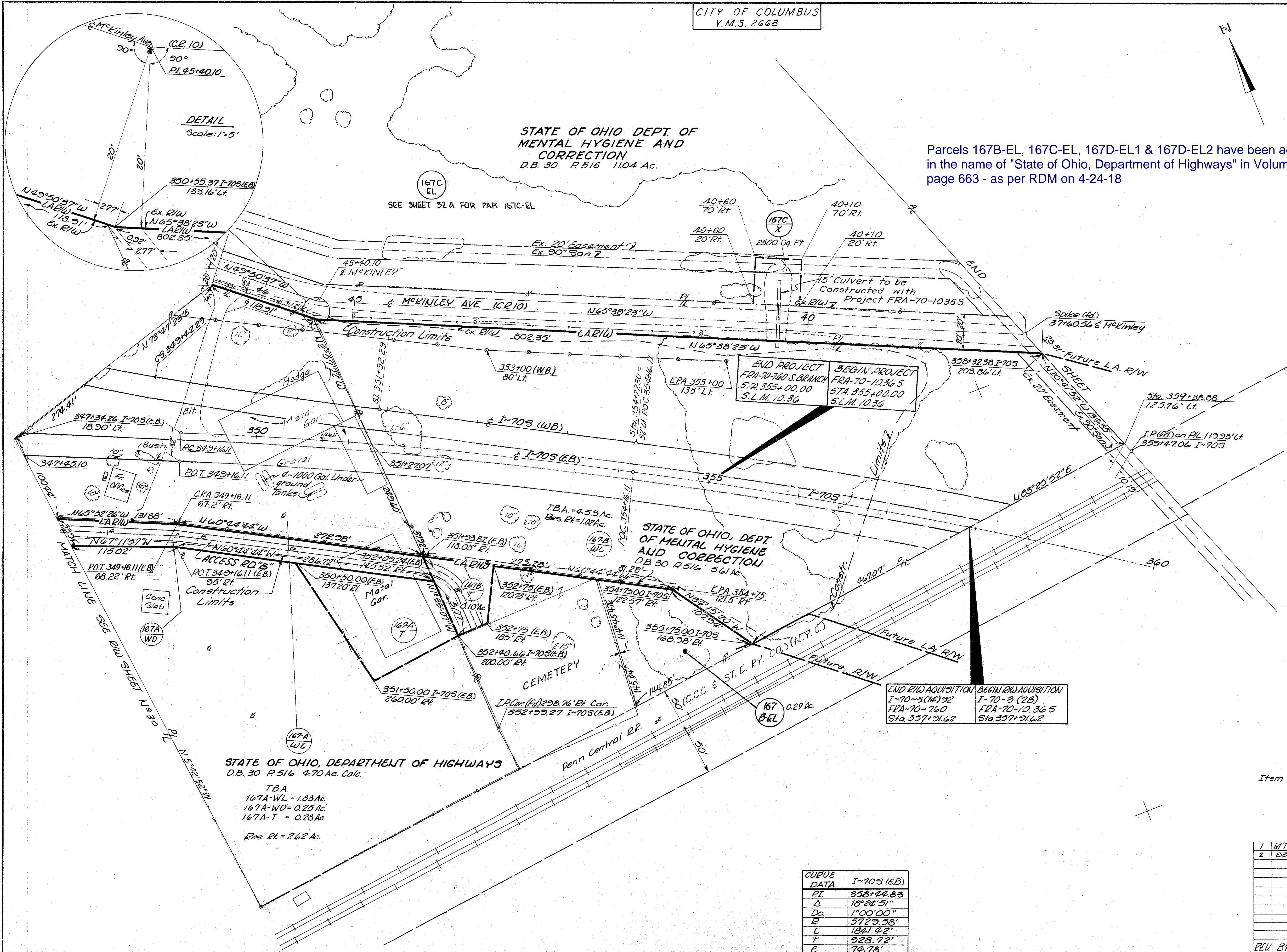
FED. RD. DIVISION	STATE	PROJECT	
2	OHIO	I-70-3(14)92 U-233(10)	

FRANKLIN COUNTY  
FRA-70-7.60 I-70-3(14)92  
FRA-33-12.96 U-233(10)  
LIMITED ACCESS

646  
654  
31  
39

STATE OF OHIO DEPT. OF  
MENTAL HYGIENE AND  
CORRECTION  
D.B. 30 P.516 1104 Ac.

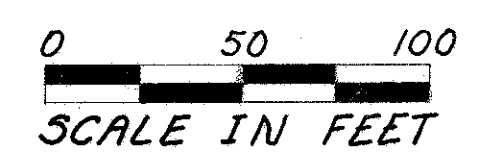
Parcels 167B-EL, 167C-EL, 167D-EL1 & 167D-EL2 have been acquired  
in the name of "State of Ohio, Department of Highways" in Volume 3160  
page 663 - as per RDM on 4-24-18



STATE OF OHIO, DEPARTMENT OF HIGHWAYS  
D.B. 30 P.516 4.70 Ac. Calc.  
T.B.A.  
167A-WL = 1.03 Ac.  
167A-WD = 0.25 Ac.  
167A-T = 0.28 Ac.  
Res. Rt = 2.62 Ac.

CURVE DATA	I-70 S (E.B.)
RT	358+44.83
Δ	18°24'51"
Dc	1°00'00"
E	5729.58'
L	1841.42'
T	928.72'
E	74.78'

Item 607, Type C.L. 1295 L.F.



TYPE FUND  
I

MTJ	ADD	DESCRIPTION	DATE
1	ADD	Parcel 167C-X	4-9-70
2	ADD	Par 167 B-EL, 167 C-EL	8-9-71

347+45.10 I-70 S(E.B.) To 360+00 I-70 S R/W