

CURVE DATA	I-70 N		US 33 W.B.	
P.I.	342+14.65	348+87.22	370+08.61	353+08.18
Δ	28°23'14"	35°02'21"	35°02'21"	25°13'27"
D _a	2°30'00"	1°00'00"	1°00'00"	6°00'00"
B	2291.83'	5729.38'	5729.38'	254.93'
L _a	1135.49'	3503.92'	3503.92'	420.40'
T	579.65'	1809.68'	1809.68'	213.66'
E	72.17'	278.69'	278.69'	22.61'
θ _a	4°22'30"	12°00'00"	12°00'00"	
L _s	350.00'	400.00'	400.00'	
L _T	233.90'	267.28'	267.28'	
ST	116.73'	133.89'	133.89'	

CITY OF COLUMBUS
V.M.S. 2668
SEC. 12, T.1N, R.23 W
CONGRESS LANDS

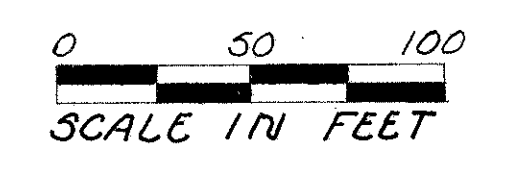
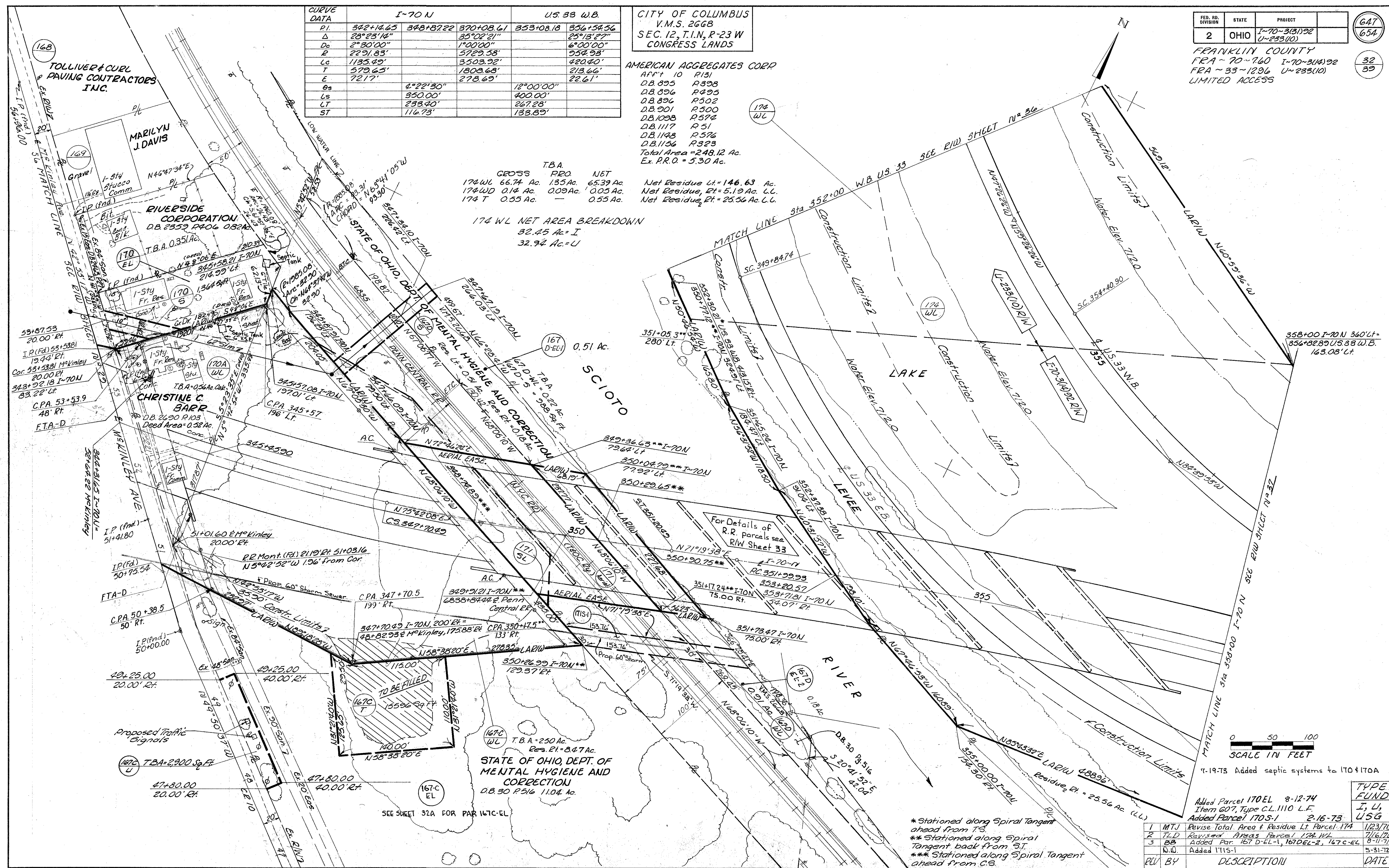
AMERICAN AGGREGATES CORP
AFF'T 10 P131
D.B. 895 P398
D.B. 896 P495
D.B. 896 P502
D.B. 901 P500
D.B. 1008 P574
D.B. 1117 P 51
D.B. 1148 P576
D.B. 1156 P523
Total Area = 248.12 Ac.
Ex. P.R.O. = 5.30 Ac.

T.B.A. GROSS PRO NET
174 WL 66.74 Ac. 135 Ac. 65.39 Ac.
174 WD 0.14 Ac. 0.09 Ac. 0.05 Ac.
174 T 0.55 Ac. — 0.55 Ac.
174 WL NET AREA BREAKDOWN
32.45 Ac. = I
32.94 Ac. = U

FED. RD. DIVISION	STATE	PROJECT
2	OHIO	I-70-3(3)92 U-233(10)

FRANKLIN COUNTY
FRA ~ 70-760 I-70-3(14)92
FRA ~ 33-1296 U-233(10)
LIMITED ACCESS

647
654
32
39



SCALE IN FEET
7-19-73 Added septic systems to 170 & 170A

REV	BY	DESCRIPTION	DATE
1	MTJ	Revised Total Area & Residue Lt Parcel 174	1/23/70
2	TLD	Revised Areas Parcel 174 WL	7/16/70
3	BB	Added Par 167 D-EL-1, 167 D-EL-2, 167 C-EL	8-11-71
	D.W.	Added 171S-1	5-31-72

Parcels 167B-EL, 167C-EL, 167D-EL1 & 167D-EL2 have been acquired in the name of "State of Ohio, Department of Highways" in Volume 3160 page 663 - as per RDM on 4-24-18

344+31.65 to 358+00 I-70 N RIW