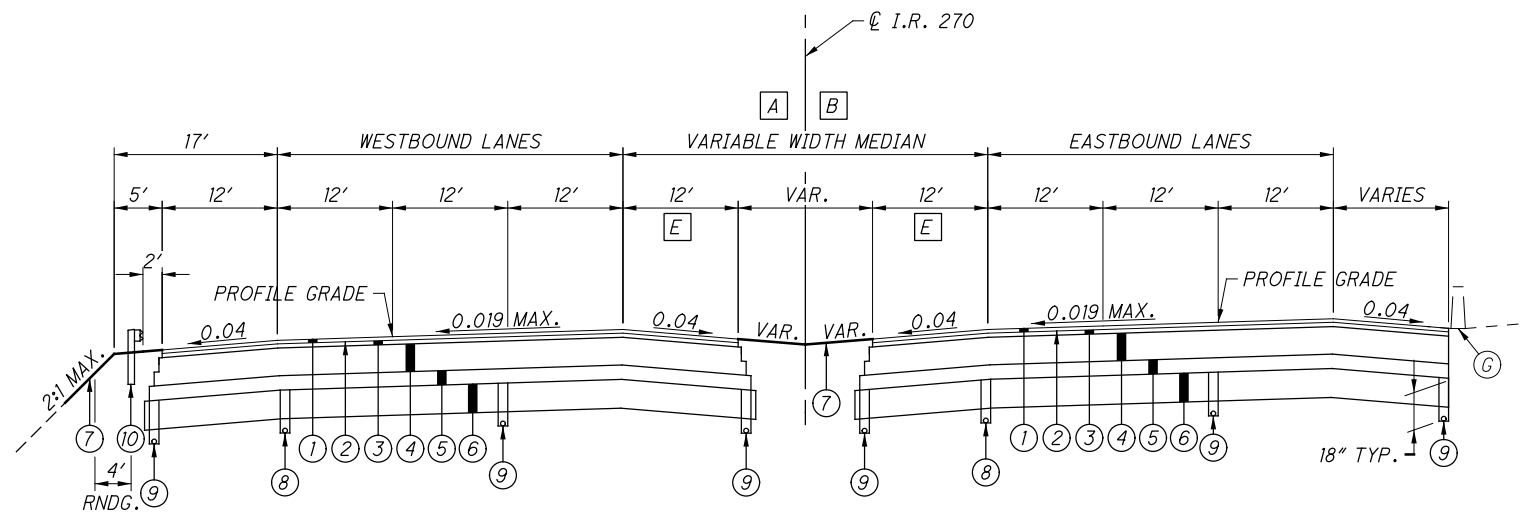
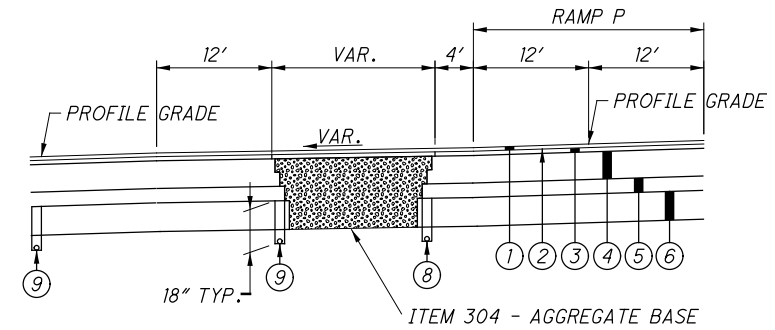


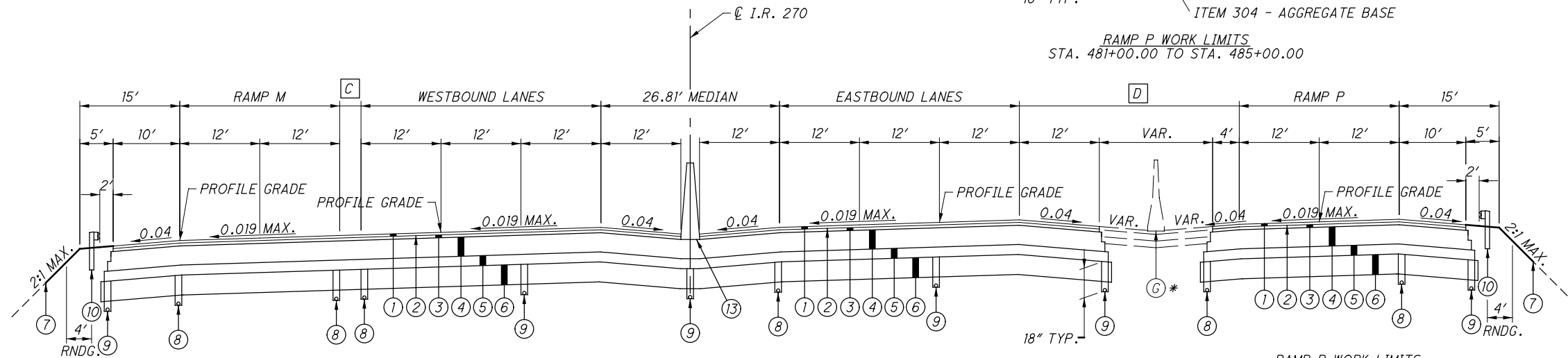
F:\FRA\92610\roadway\sheets\92610GY003.dgn 9/8/2014 10:35:01 AM bshepherd



SUPERELEVATED SECTION - I.R. 270
STA. 489+00.00 TO STA. 500+80.73

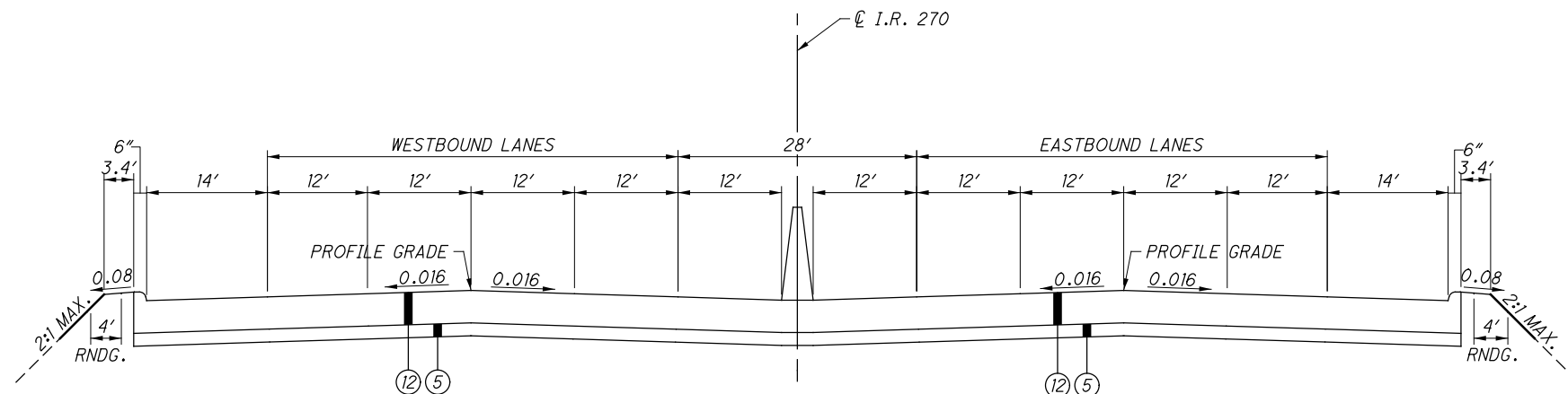


RAMP P WORK LIMITS
STA. 481+00.00 TO STA. 485+00.00



SUPERELEVATED SECTION - I.R. 270
STA. 460+55.24 TO STA. 489+00.00

RAMP P WORK LIMITS
STA. 477+43.00 TO STA. 485+27.46
* SEE PLANS FOR LIMITS OF EXISTING BARRIER



NORMAL APPROACH SLAB TYPICAL SECTION - I.R. 270
STA. 424+84.10 TO STA. 425+09.10 (WB)
STA. 426+69.16 TO STA. 426+74.16 (WB)
STA. 425+26.55 TO STA. 425+51.55 (EB)
STA. 427+38.05 TO STA. 427+63.05 (EB)

- A** STA. 486+12.00 TO STA. 497+82.41
VARIES 26.81' TO 60.00'
- B** STA. 497+75.09 TO STA. 500+80.73
WIDTH = 60.00'
- C** STA. 479+34.69 TO STA. 486+09.98
TAPER FROM 0.00' TO 24.00'
- D** STA. 477+43.00 TO STA. 485+14.05
TAPER FROM 24.00' TO 33.59'
- E** STA. 495+00.00 TO STA. 497+00.00
TAPER FROM 12.00' TO 4.00'

NOTE:

EXISTING BRIDGE AND APPROACH SLABS FOR STRUCTURE NO. FRA-270-5340 L/R OVER SCIOTO RIVER WILL REMAIN AS IS. APPROACH SLAB LIMITS LISTED BELOW.
STA. 449+94.11 TO STA. 450+19.11 (WB)
STA. 457+49.97 TO STA. 457+74.97 (WB)
STA. 450+32.24 TO STA. 450+57.24 (EB)
STA. 457+88.07 TO STA. 458+13.07 (EB)

FOR LEGEND, SEE SHEET 5

TYPICAL SECTIONS

Approved for Construction 9-11-14

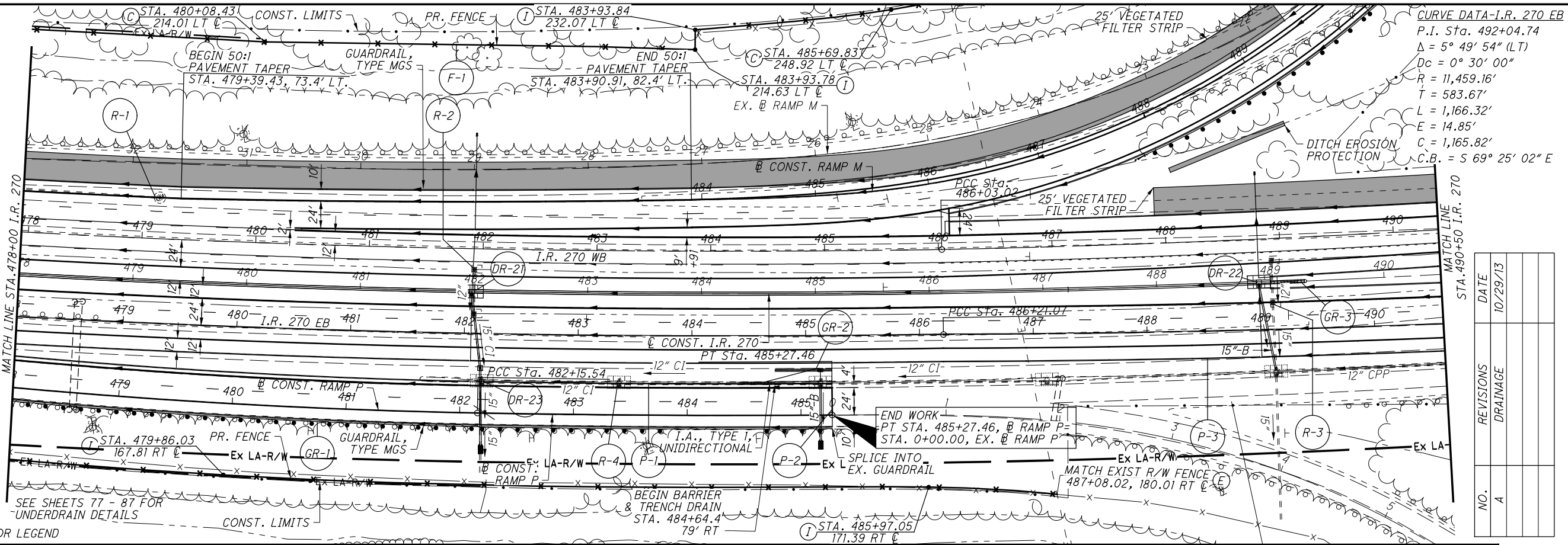
FRA - 270 - 52.72

CURVE DATA-I.R. 270 WB
 P.I. Sta. 491+83.91
 $\Delta = 5^\circ 46' 27''$ (LT)
 $Dc = 0^\circ 29' 51''$
 $R = 11,518.57'$
 $T = 580.89'$
 $L = 1,160.80'$
 $E = 14.64'$
 $C = 1,160.31'$
 $C.B. = S 70^\circ 27' 59'' E$

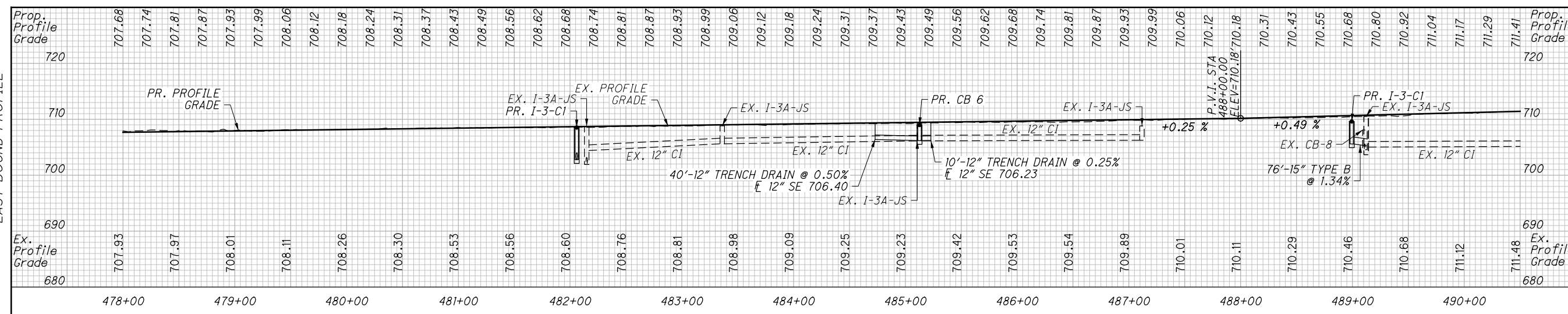
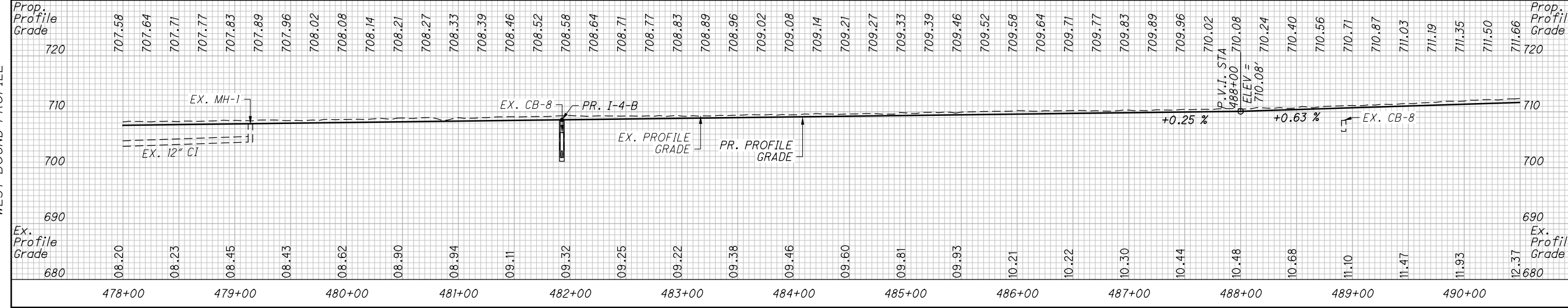
CURVE DATA - RAMP P
 P.I. Sta. 479+82.03
 $\Delta = 4^\circ 40' 23''$ (LT)
 $Dc = 1^\circ 00' 00''$
 $R = 5,729.58'$
 $T = 233.78'$
 $L = 467.29'$
 $E = 4.77'$
 $C = 467.16'$
 $C.B. = S 62^\circ 57' 23'' E$

CURVE DATA - RAMP P
 P.I. Sta. 483+71.51
 $\Delta = 1^\circ 32' 42''$ (LT)
 $Dc = 0^\circ 29' 43''$
 $R = 11,567.16'$
 $T = 155.97'$
 $L = 311.91'$
 $E = 1.05'$
 $C = 311.90'$
 $C.B. = S 66^\circ 03' 55'' E$

CURVE DATA-I.R. 270 EB
 P.I. Sta. 492+04.74
 $\Delta = 5^\circ 49' 54''$ (LT)
 $Dc = 0^\circ 30' 00''$
 $R = 11,459.16'$
 $T = 583.67'$
 $L = 1,166.32'$
 $E = 14.85'$
 $C = 1,165.82'$
 $C.B. = S 69^\circ 25' 02'' E$



NO.	REVISIONS	DATE
A	DRAINAGE	10/29/13



PLAN AND PROFILE
STA. 478+00 TO STA. 490+50

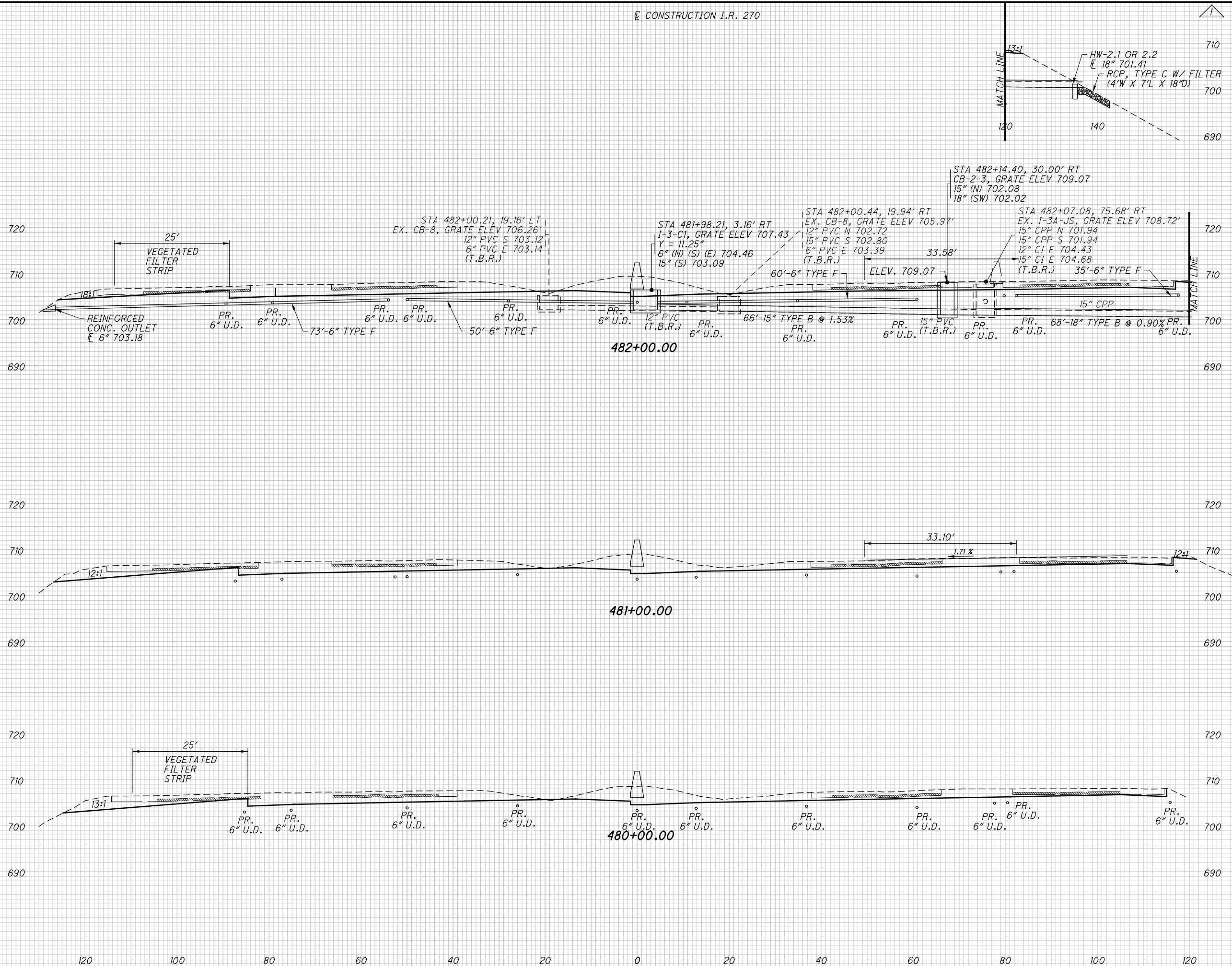
Approved for Construction 9-11-14

FRA - 270-52.72

F:\FRA\92610\roadway\sheets\92610GP009.dgn 9/8/2014 10:32:55 AM jconley

SEEDING	
END WIDTH	SO. YDS.

END AREA		VOLUME		CALCULATED JDC	CHECKED RJM
CUT	FILL	CUT	FILL		



Approved for Construction 9-11-14

CROSS SECTIONS I.R. 270
STA. 480+00.00 TO STA. 482+00.00

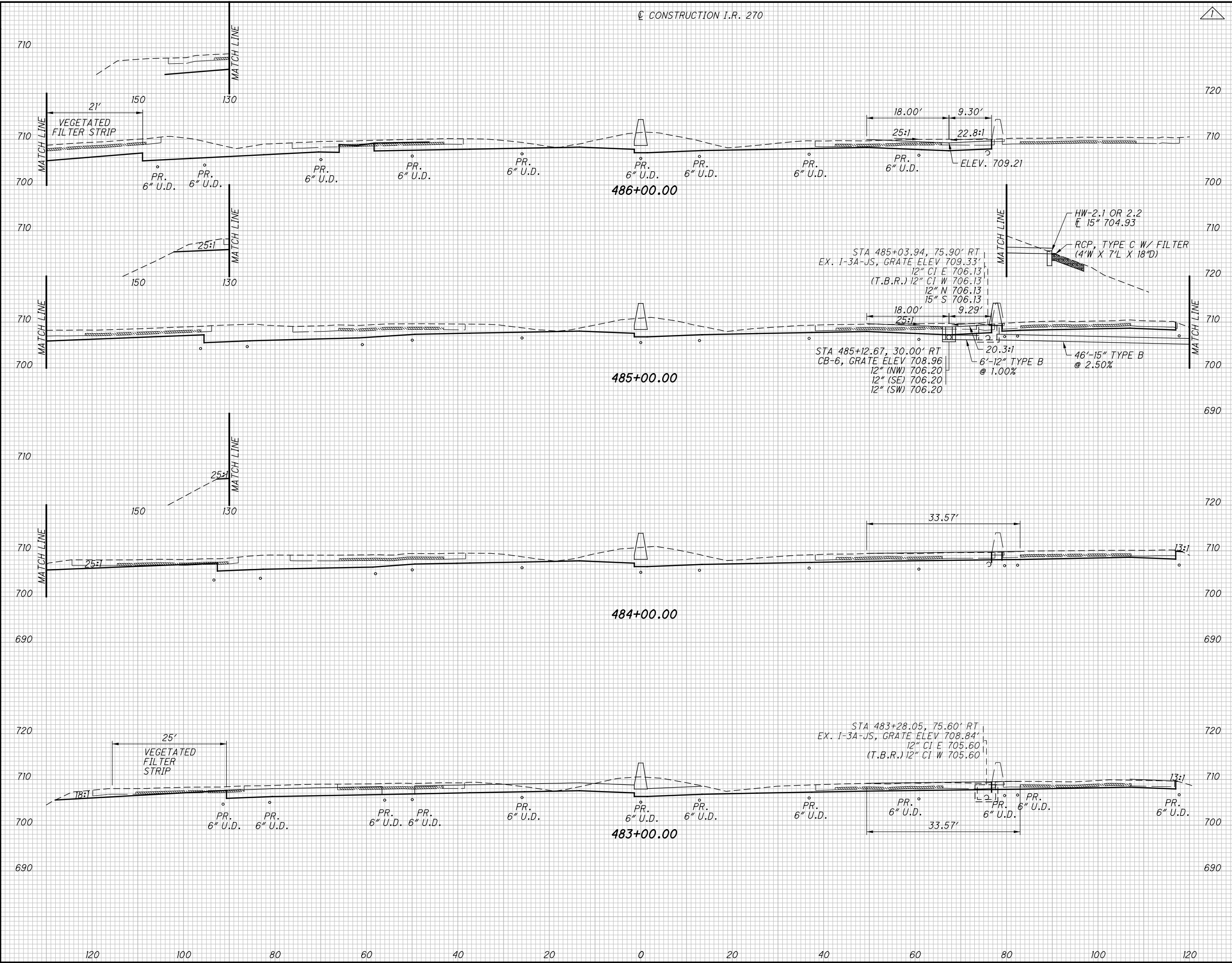
FRA - 270 - 52.72

F:\FRA\92610\roadway\sheets\92610XS001.dgn 8/20/2014 1:14:18 PM jconley

SEEDING	
END WIDTH	SO. YDS.

END AREA		VOLUME		CALCULATED JDC	CHECKED RJM
CUT	FILL	CUT	FILL		

F:\FRA\92610\roadway\sheets\92610XS001.dgn 8/20/2014 1:14:18 PM jconley



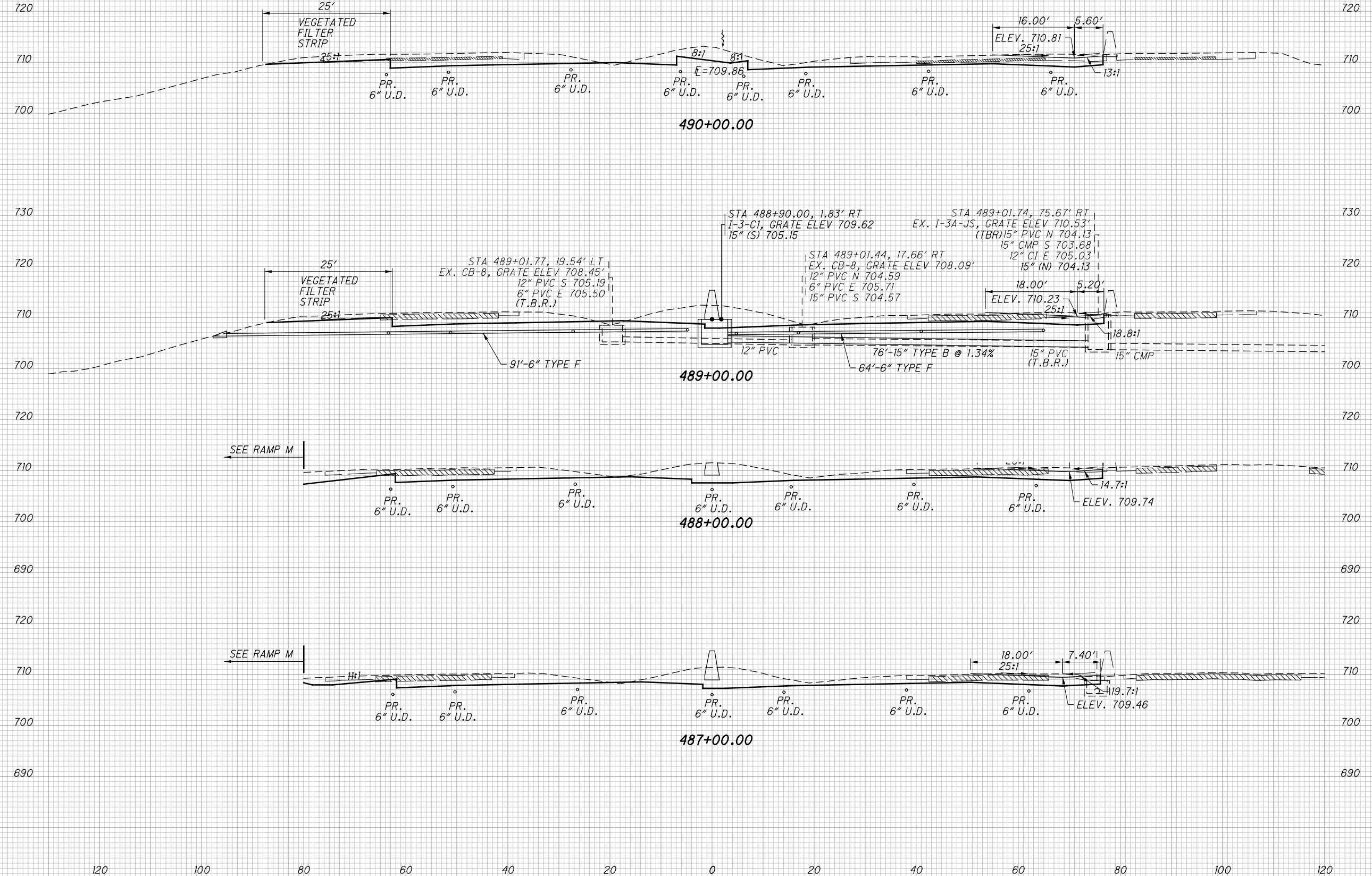
Approved for Construction 9-11-14

CROSS SECTIONS I.R. 270
STA. 483+00.00 TO STA. 486+00.00

FRA - 270 - 52.72

SEEDING	
END WIDTH	SO. YDS.

END AREA		VOLUME		CALCULATED	
CUT	FILL	CUT	FILL	JDC	RUJ



CROSS SECTIONS I.R. 270
STA. 487+00.00 TO STA. 490+00.00

Approved for Construction 9-11-14

FRA - 270-52.72

NO.	DATE
A	10/29/13

REVISIONS	DATE
DRAINAGE	10/29/13

F:\FRA\92610\roadway\sheets\92610XS001.dgn 8/20/2014 1:14:18 PM jconley

120 100 80 60 40 20 0 20 40 60 80 100 120

SEEDING	
END WIDTH	SO. YDS.

END AREA		VOLUME		CALCULATED	
CUT	FILL	CUT	FILL	JDC	RJM

CROSS SECTIONS I.R. 270
 STA. 491+00.00 TO STA. 495+00.00

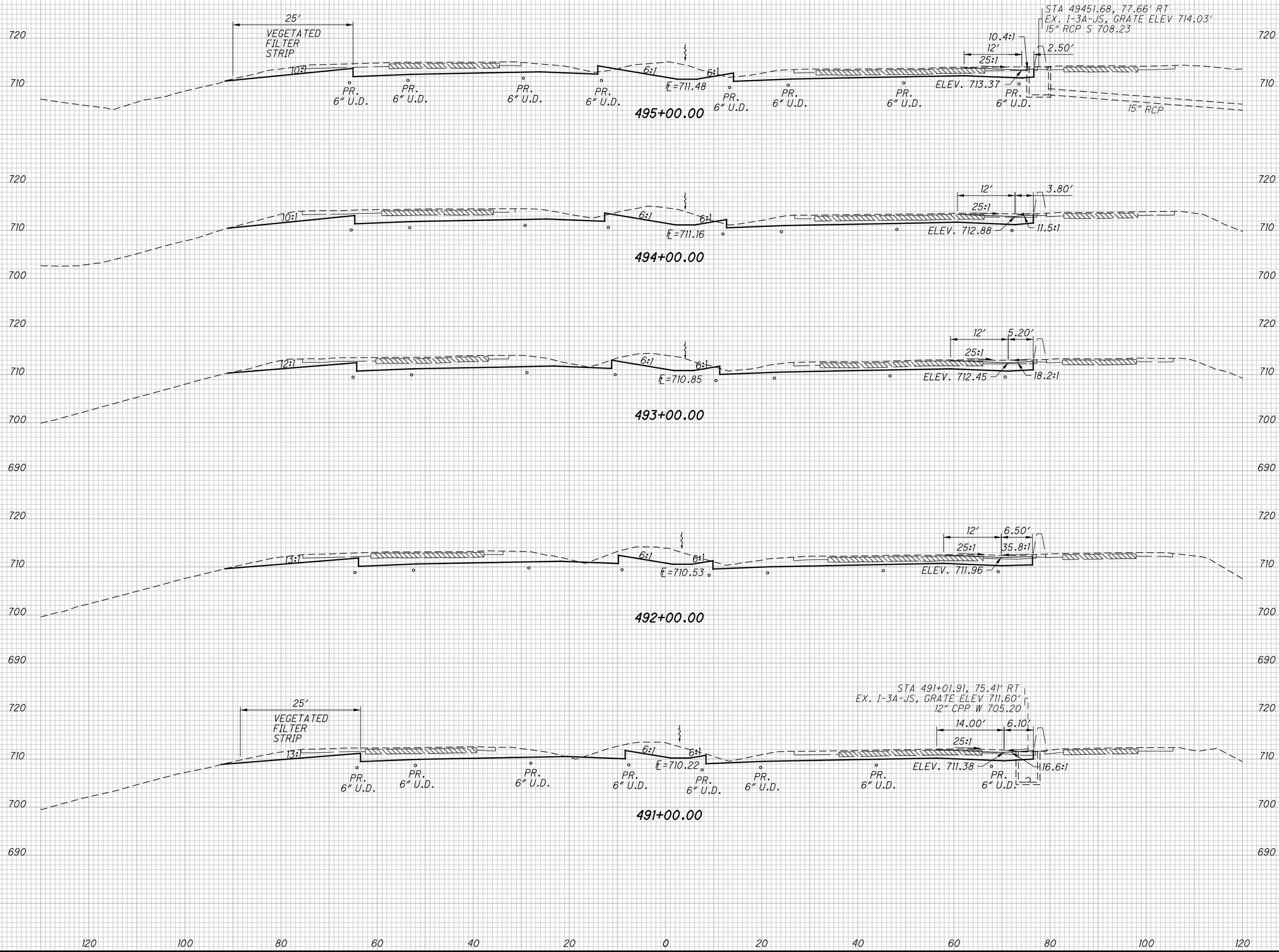
Approved for Construction 9-11-14

FRA - 270-52.72

56

114

F:\FRA\92610\roadway\sheets\92610X5001.dgn 8/20/2014 1:14:19 PM jconley

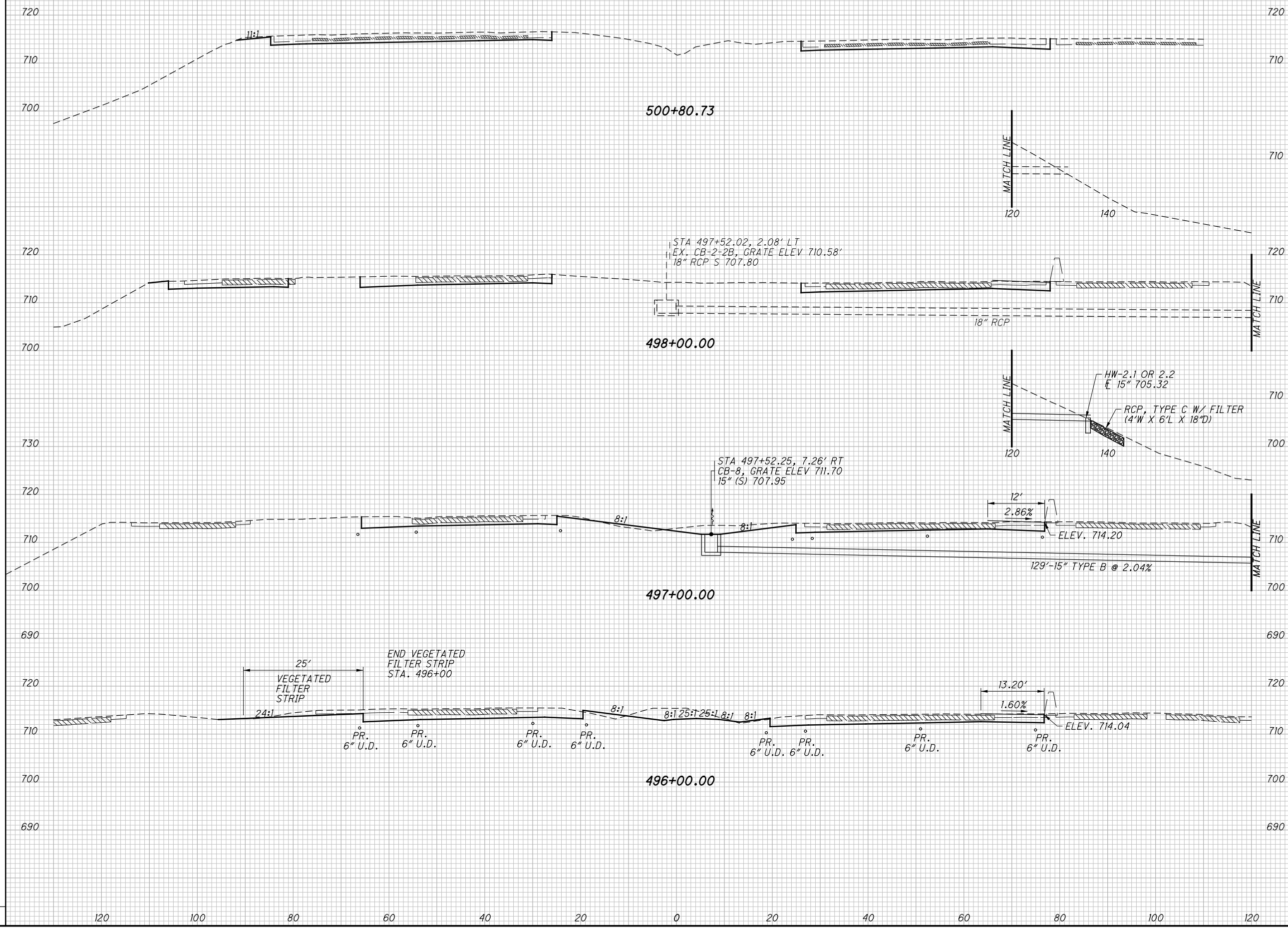


120 100 80 60 40 20 0 20 40 60 80 100 120

SEEDING
END SO.
WIDTH YDS.

CONSTRUCTION I.R. 270

END AREA		VOLUME		CALCULATED	
CUT	FILL	CUT	FILL	JDC	RJM



Approved for Construction 9-11-14

CROSS SECTIONS I.R. 270
STA. 496+00.00 TO STA. 500+80.73

FRA - 270-52.72

57
114

F:\FRA\92610\roadway\sheets\92610XS001.dgn 8/20/2014 1:14:19 PM jconley