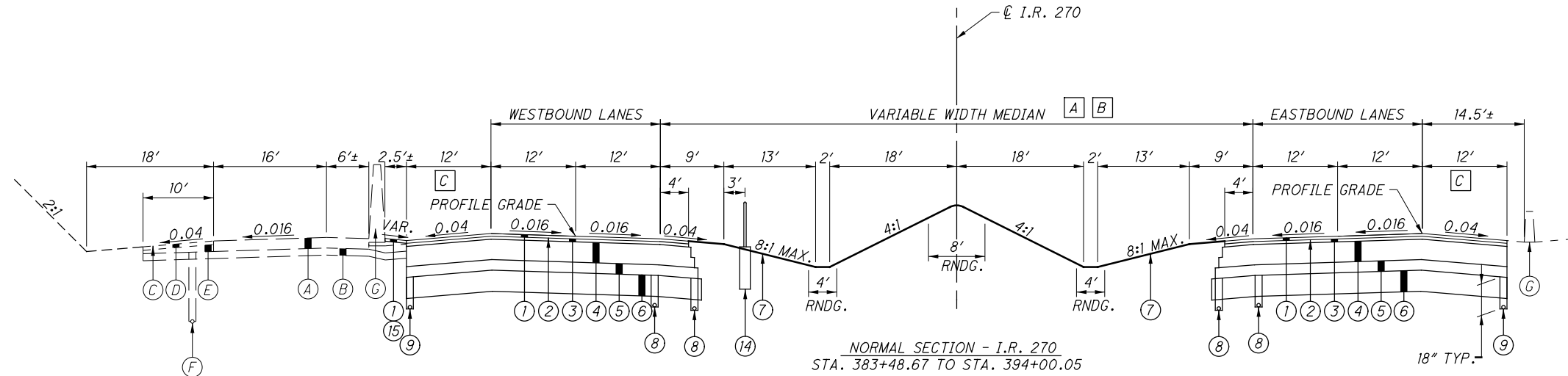
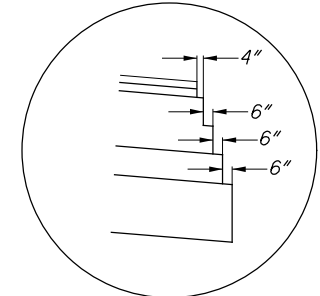


- [A] STA. 383+48.67 TO STA. 389+40.00  
WIDTH = 84.00'
- [B] STA. 389+40.00 TO STA. 394+00.05  
VARIES 84.00' TO 70.86'
- [C] SHOULDER VARIES:  
FROM 10' AT STA. 383+48.67  
TO 12' AT STA. 383+98.67

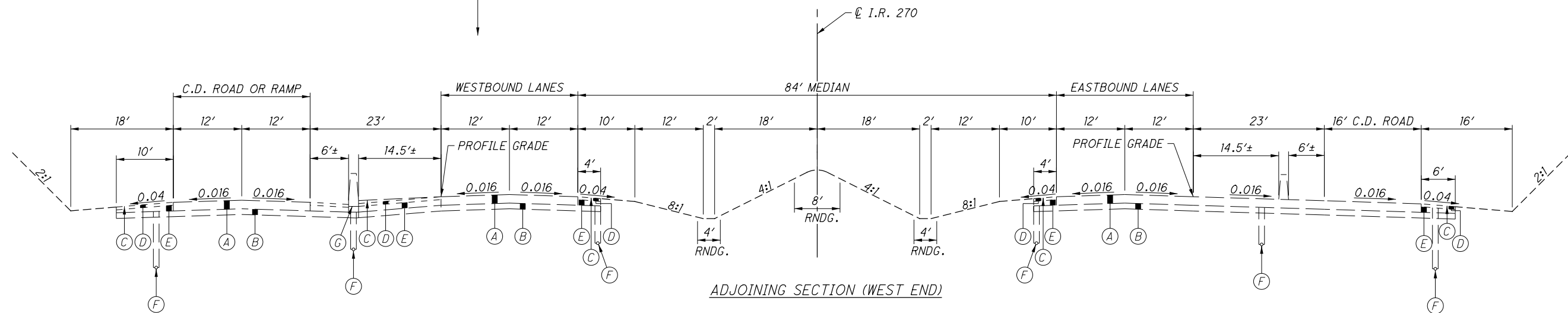


NORMAL SECTION - I.R. 270  
STA. 383+48.67 TO STA. 394+00.05



BASE AND SUBBASE STEP DETAIL

FOR CROWN SHIFT TRANSITION  
SEE INTERCHANGE DETAIL SHEET 76.



ADJOINING SECTION (WEST END)

**LEGEND:**

- |                                                                               |                                                               |
|-------------------------------------------------------------------------------|---------------------------------------------------------------|
| ① ITEM 442 - 1 1/2" ASPHALT CONCRETE SURFACE COURSE, 12.5 MM, TYPE A (446)    | ⑫ ITEM 526 - REINFORCED CONCRETE APPROACH SLABS (T=15")       |
| ② ITEM 407 - TACK COAT FOR INTERMEDIATE COURSE, (0.04 GAL/SQ.YD.)             | ⑬ ITEM 622 - CONCRETE BARRIER, TYPE C1 (57")                  |
| ③ ITEM 442 - 1 3/4" ASPHALT CONCRETE INTERMEDIATE COURSE, 19 MM, TYPE A (446) | ⑭ ITEM 606 - GUARDRAIL, MISC.: TENSIONED CABLE                |
| ④ ITEM 302 - ASPHALT CONCRETE BASE, PG64-22 (T=11.5", 2 LIFTS)                | ⑮ ITEM 254 - PAVEMENT PLANING, ASPHALT CONCRETE (T= VARIABLE) |
| ⑤ ITEM 304 - 6" AGGREGATE BASE                                                |                                                               |
| ⑥ ITEM 206 - CEMENT STABILIZED SUBGRADE, 12" DEEP                             |                                                               |
| ⑦ ITEM 659 - SEEDING AND MULCHING                                             |                                                               |
| ⑧ ITEM 605 - 6" SHALLOW PIPE UNDERDRAIN                                       |                                                               |
| ⑨ ITEM 605 - 6" BASE PIPE UNDERDRAIN                                          |                                                               |
| ⑩ ITEM 606 - GUARDRAIL, TYPE MGS                                              |                                                               |
| ⑪ ITEM 622 - CONCRETE BARRIER, TYPE B1 (57")                                  |                                                               |

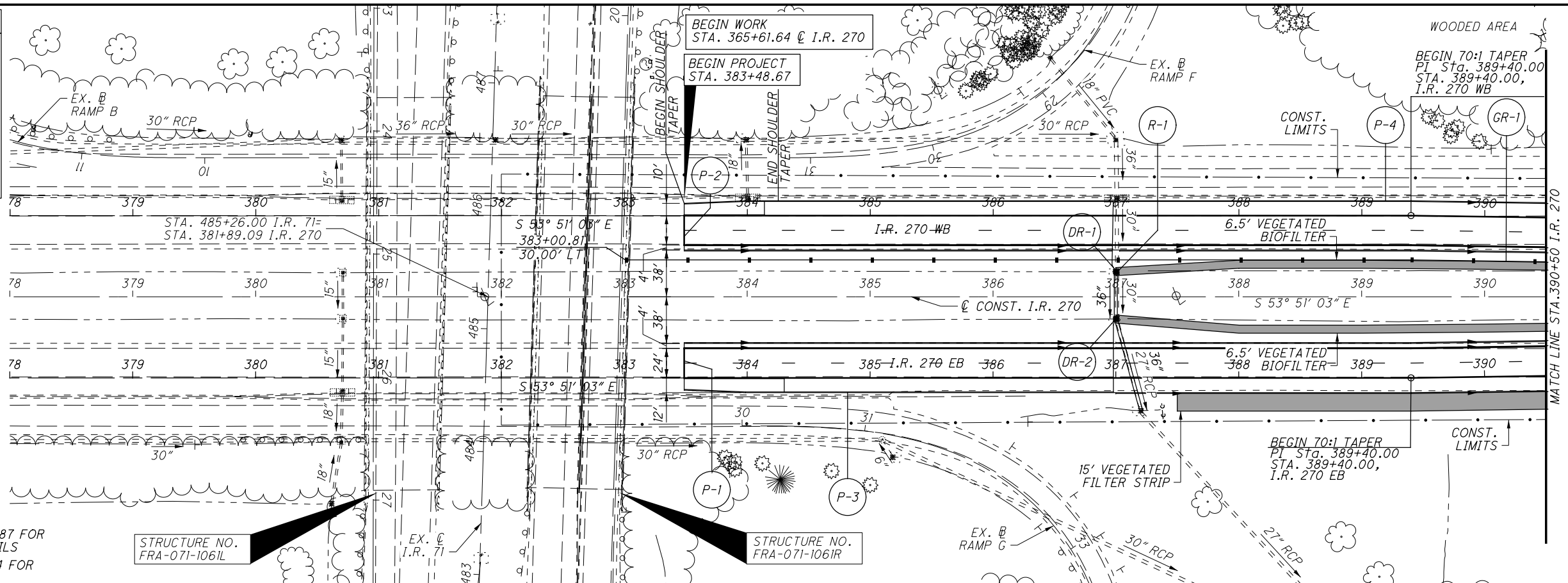
**EXISTING LEGEND**

- (A) EXISTING 9" REINFORCED PORTLAND CEMENT CONCRETE PAVEMENT
- (B) EXISTING 6" SUBBASE
- (C) EXISTING BITUMINOUS SURFACE TREATMENT
- (D) EXISTING 3" WATERPROOF AGGREGATE BASE
- (E) EXISTING POROUS BASE COURSE
- (F) EXISTING 6" UNDERDRAIN
- (G) EXISTING CONCRETE BARRIER
- (H) EXISTING GUARDRAIL, TYPE 5
- (J) EXISTING 6" WATERPROOF AGGREGATE BASE

F:\FRA\92610\roadway\sheets\92610GP001.dgn 9/3/2014 3:53:56 PM jconley

**LEGEND**

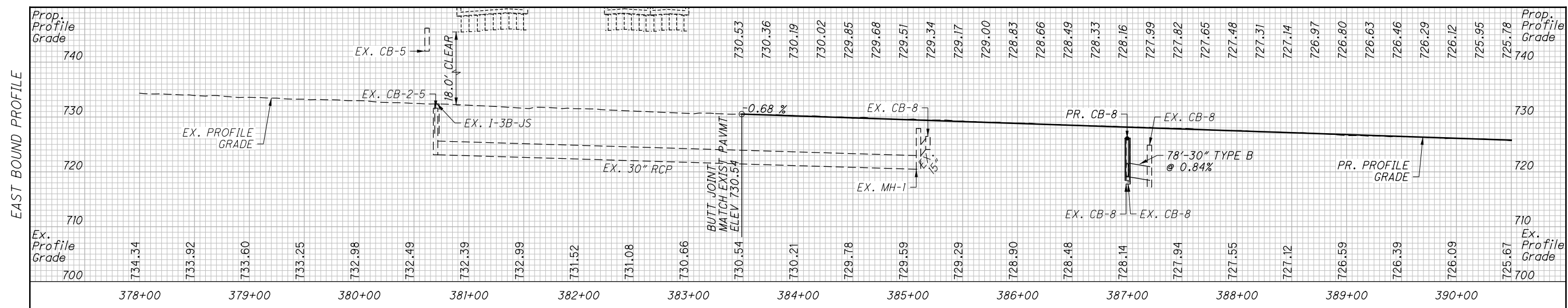
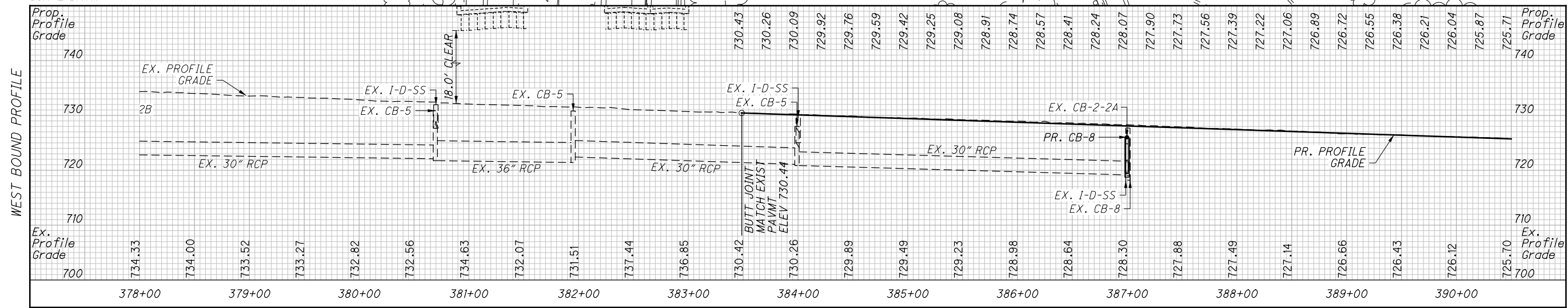
- (P-1) PAVEMENT SAWCUT
- (F) PROPOSED FENCE
- (GR-1) PROPOSED GUARDRAIL
- (DR-1) PROPOSED DRAINAGE
- (R-1) REMOVAL
- (UD-1) UNDER DRAIN



SEE SHEETS 77 - 87 FOR UNDERDRAIN DETAILS  
SEE SHEETS 3 & 4 FOR CURVE DATA

STRUCTURE NO. FRA-071-1061L

STRUCTURE NO. FRA-071-1061R

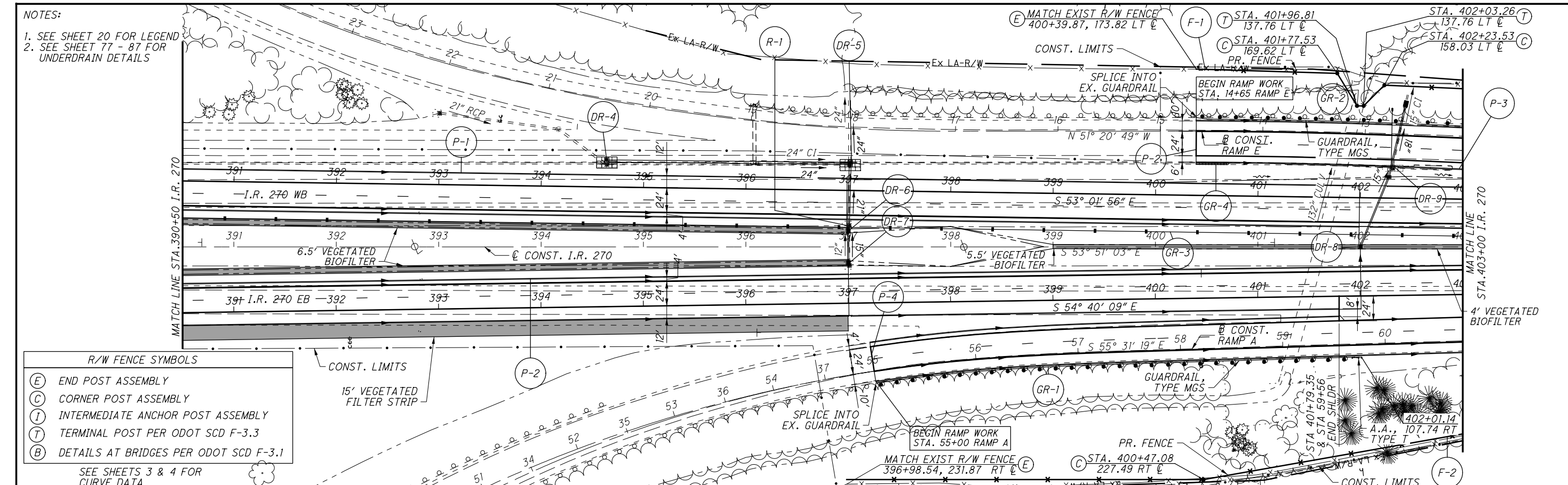


Approved for Construction 9-11-14

CALCULATED JDC CHECKED RJM

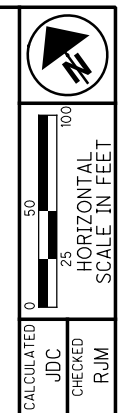
0 25 50 100  
HORIZONTAL SCALE IN FEET

**PLAN AND PROFILE  
BEGIN TO STA. 390+50**

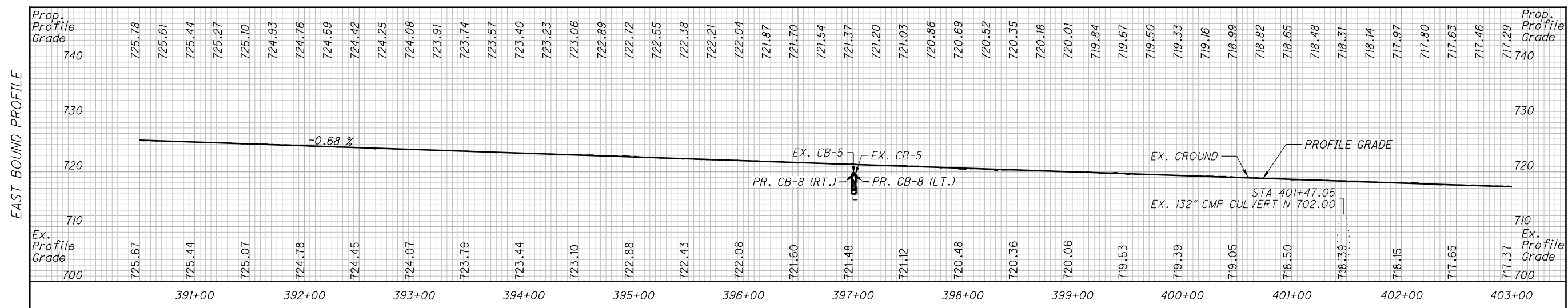
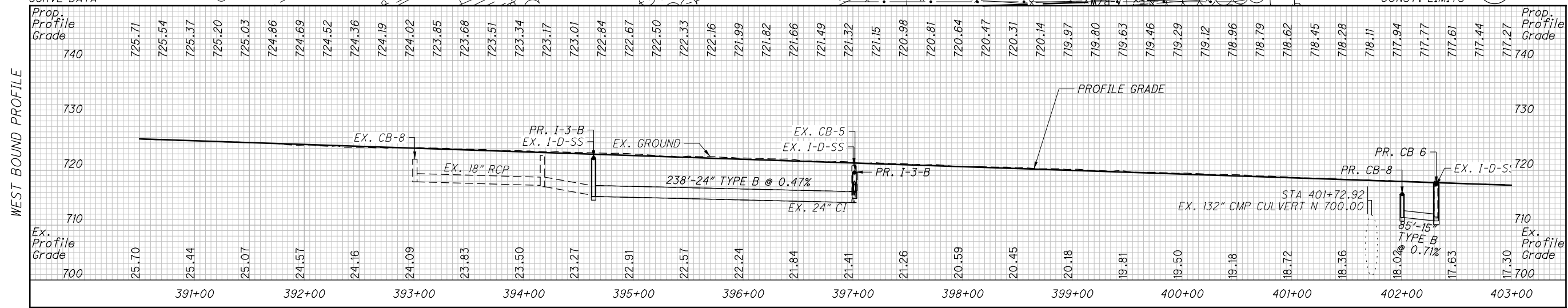


NOTES:  
 1. SEE SHEET 20 FOR LEGEND  
 2. SEE SHEET 77 - 87 FOR UNDERDRAIN DETAILS

- R/W FENCE SYMBOLS
- (E) END POST ASSEMBLY
  - (C) CORNER POST ASSEMBLY
  - (I) INTERMEDIATE ANCHOR POST ASSEMBLY
  - (T) TERMINAL POST PER ODOT SCD F-3.3
  - (B) DETAILS AT BRIDGES PER ODOT SCD F-3.1



PLAN AND PROFILE  
 STA. 390+50 TO STA. 403+00

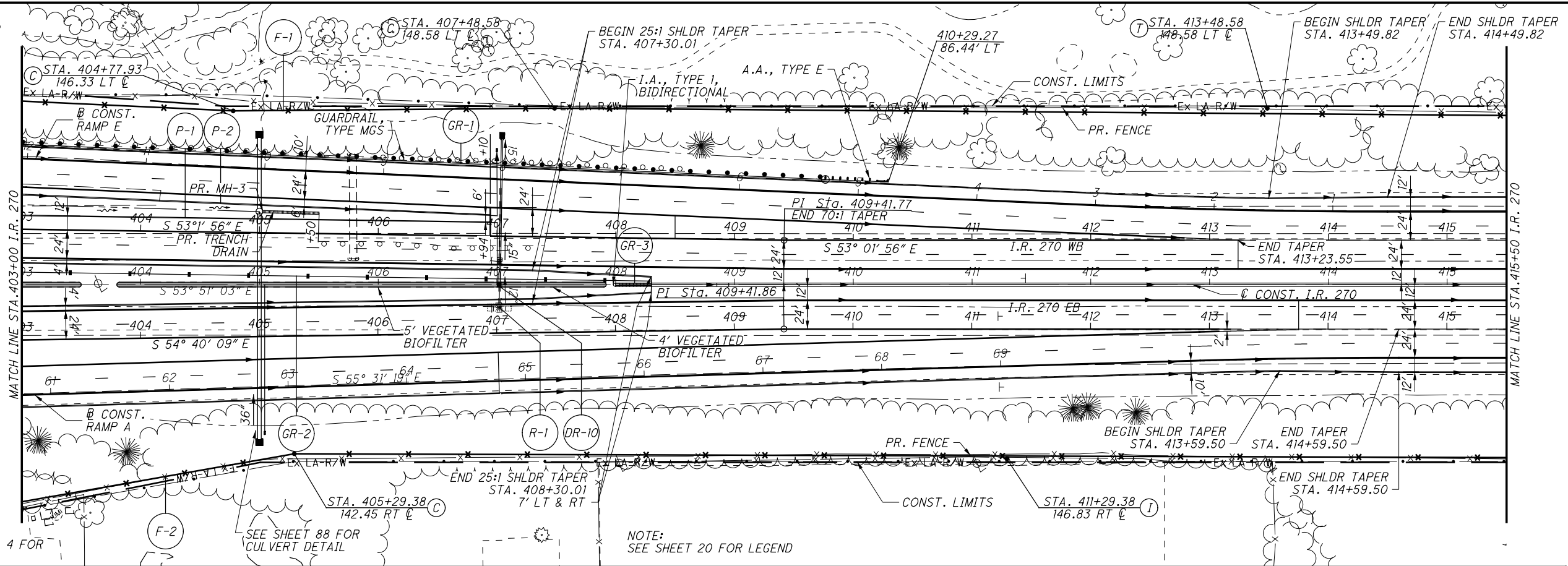


F:\FRA\92610\roadway\sheets\92610GP002.dgn 9/3/2014 3:53:57 PM jconley

Approved for Construction 9-11-14

FRA - 270-52.72

SEE SHEETS 77 - 87 FOR UNDERDRAIN LOCATIONS AND DETAILS

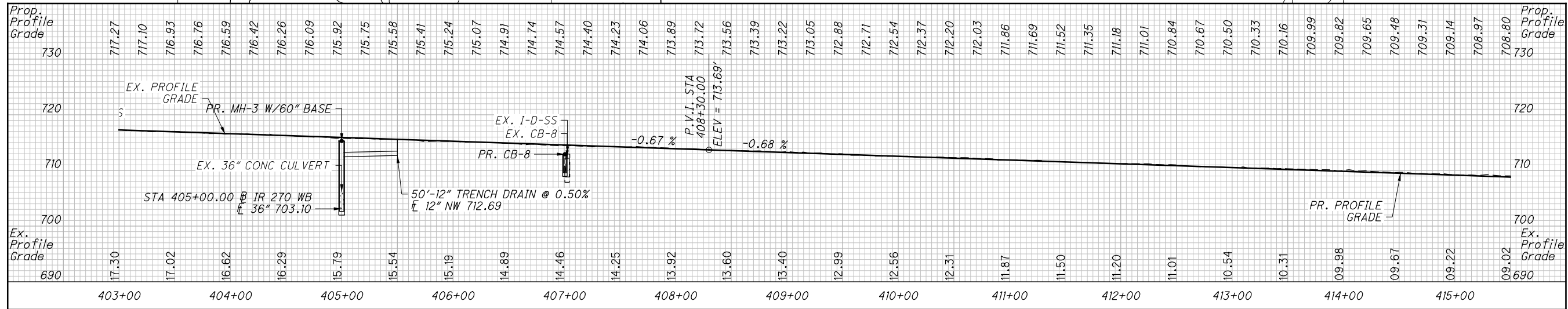


SEE SHEETS 3 & 4 FOR CURVE DATA

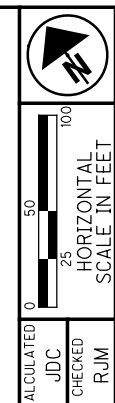
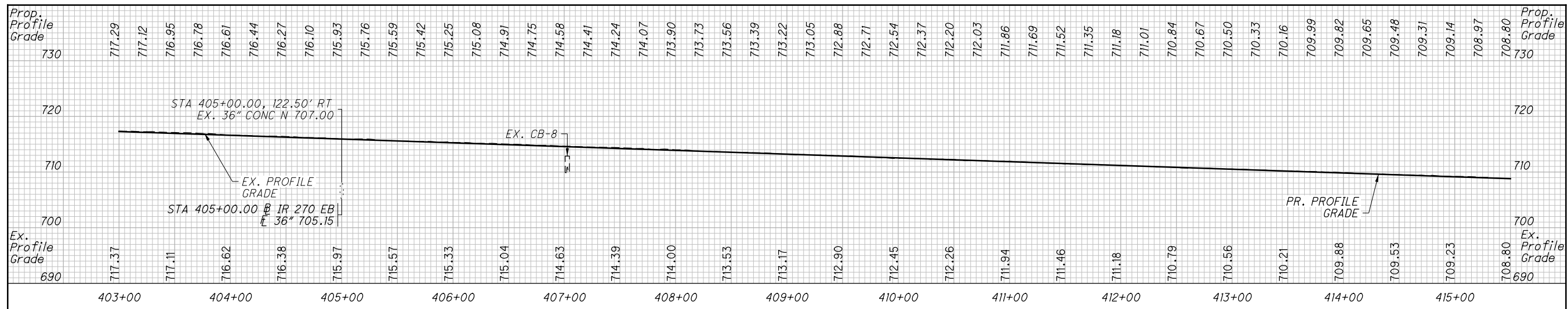
SEE SHEET 88 FOR CULVERT DETAIL

NOTE: SEE SHEET 20 FOR LEGEND

WEST BOUND PROFILE



EAST BOUND PROFILE



CALCULATED JDC CHECKED RJM

PLAN AND PROFILE  
STA. 403+00 TO STA. 415+50

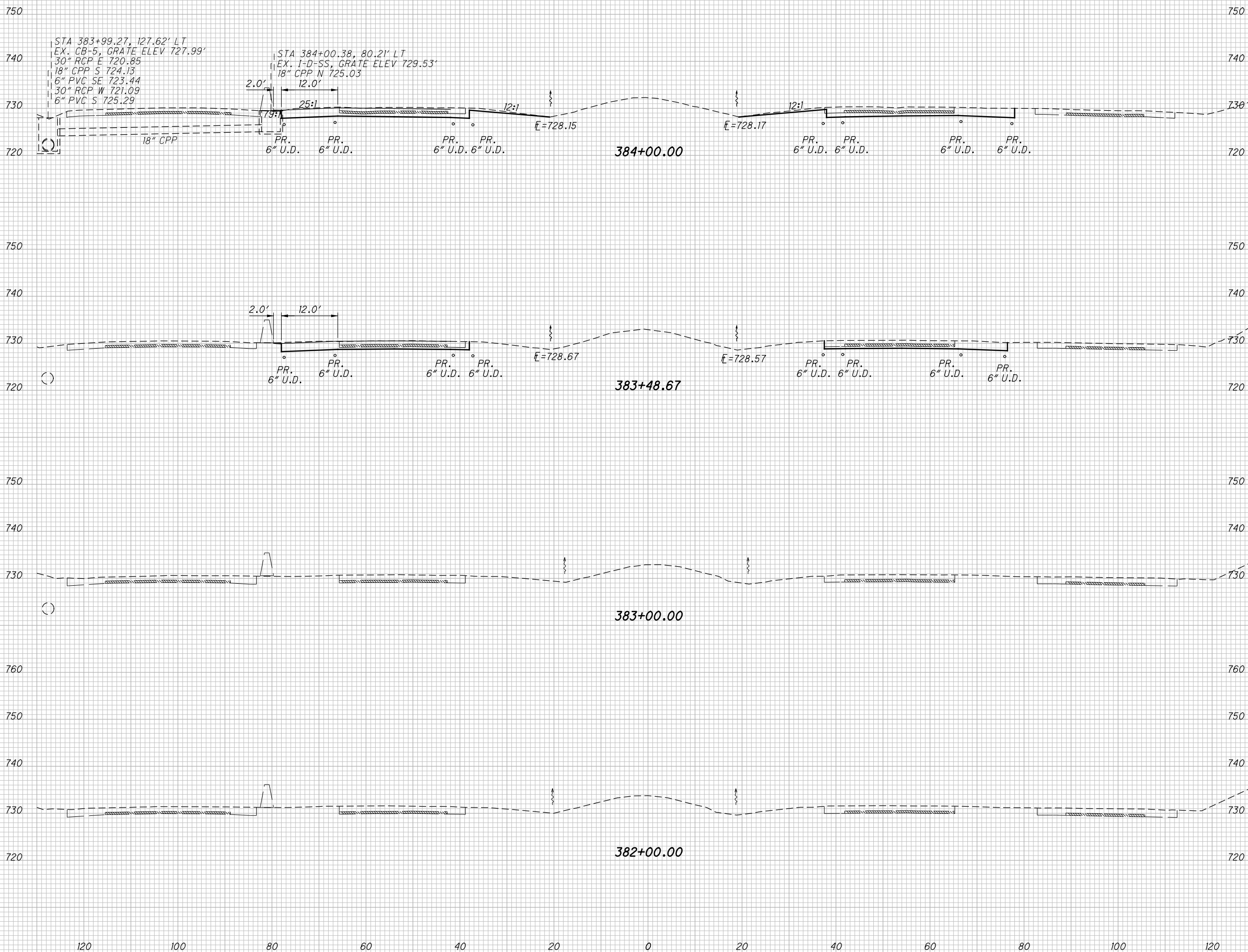
Approved for Construction 9-11-14

FRA - 270-52.72

F:\FRA\92610\roadway\sheets\92610GP003.dgn 9/8/2014 10:56:19 AM jconley

SEEDING  
END SO.  
WIDTH YDS.

END AREA		VOLUME		CALCULATED JDC	CHECKED RJM
CUT	FILL	CUT	FILL		



**CROSS SECTIONS I.R. 270  
STA. 382+00.00 TO STA. 384+00.00**

Approved for Construction 9-11-14

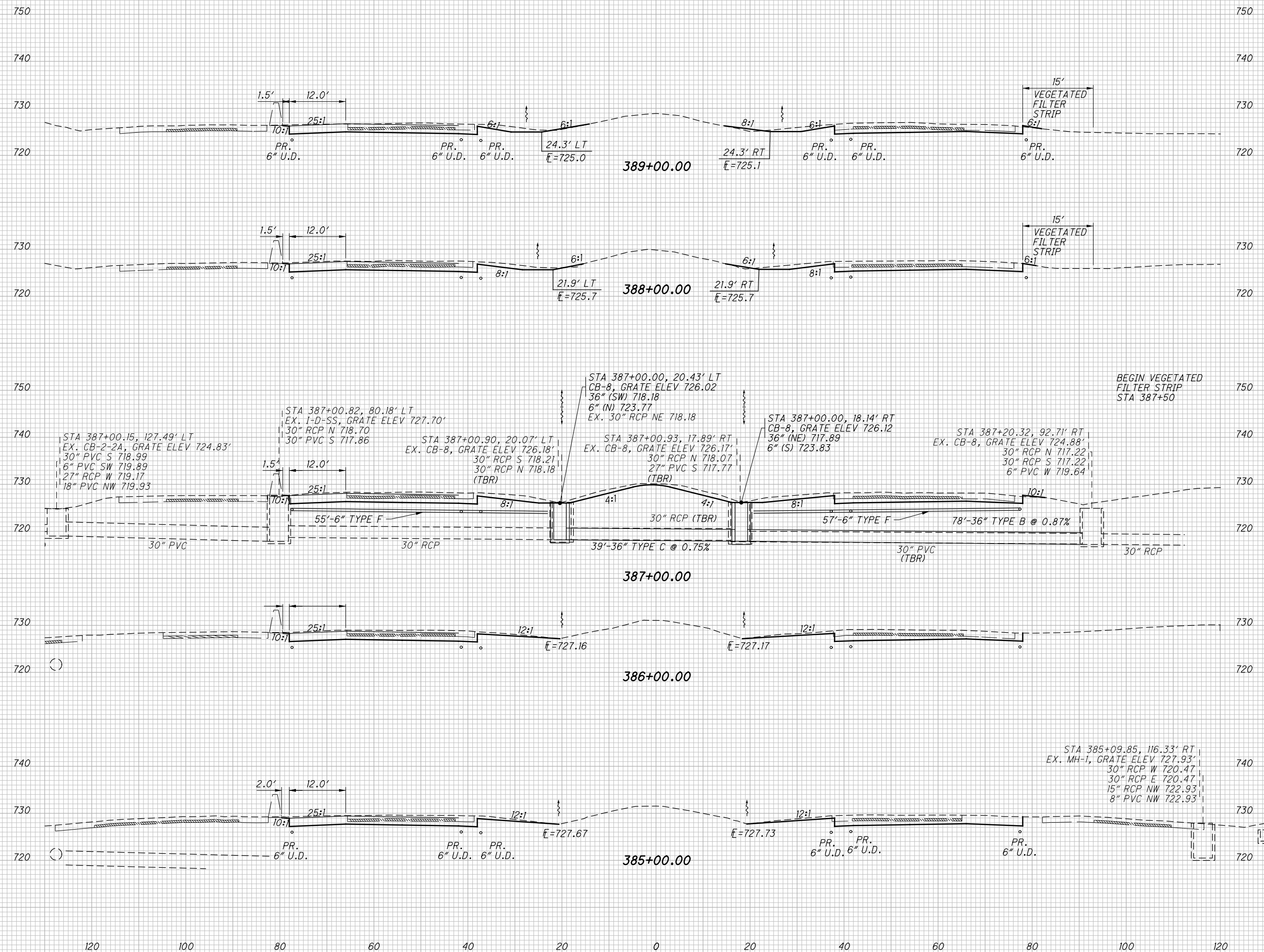
FRA - 270-52.72

31  
114

F:\FRA\92610\roadway\sheets\92610X5001.dgn 9/3/2014 3:53:59 PM jconley

SEEDING	
END WIDTH	SO. YDS.

END AREA		VOLUME		CALCULATED JDC	CHECKED RJM
CUT	FILL	CUT	FILL		



**CROSS SECTIONS I.R. 270**  
**STA. 385+00.00 TO STA. 389+00.00**

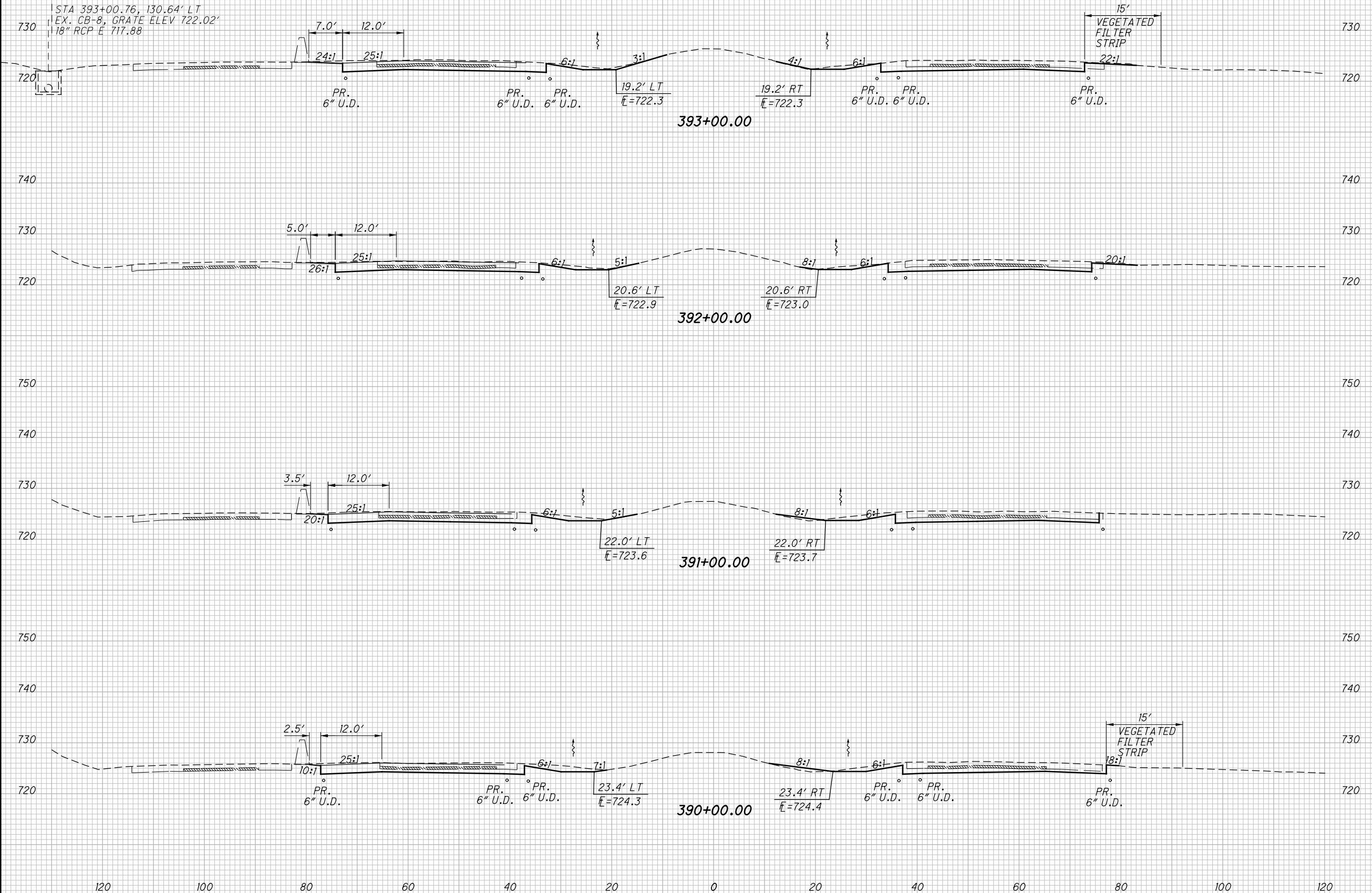
Approved for Construction 9-11-14

**FRA - 270-52.72**

F:\FRA\92610\roadway\sheets\92610XS001.dgn 9/3/2014 3:53:59 PM jconley

SEEDING  
END SO.  
WIDTH YDS.

END AREA VOLUME  
CUT FILL CUT FILL  
CALCULATED JDC  
CHECKED RJM



STA 393+00.76, 130.64' LT  
EX. CB-8, GRATE ELEV 722.02'  
18" RCP E 717.88

15'  
VEGETATED  
FILTER  
STRIP  
22:1  
PR.  
6" U.D.

7.0' 12.0'  
24:1 25:1  
PR.  
6" U.D.

PR. PR.  
6" U.D. 6" U.D.

19.2' LT  
E=722.3

19.2' RT  
E=722.3

PR. PR.  
6" U.D. 6" U.D.

393+00.00

5.0' 12.0'  
26:1 25:1

20.6' LT  
E=722.9

20.6' RT  
E=723.0

392+00.00

3.5' 12.0'  
20:1 25:1

22.0' LT  
E=723.6

22.0' RT  
E=723.7

391+00.00

2.5' 12.0'  
10:1 25:1  
PR.  
6" U.D.

PR. PR.  
6" U.D. 6" U.D.

23.4' LT  
E=724.3

23.4' RT  
E=724.4

390+00.00

15'  
VEGETATED  
FILTER  
STRIP  
18:1  
PR.  
6" U.D.

120 100 80 60 40 20 0 20 40 60 80 100 120

Approved for Construction 9-11-14

CROSS SECTIONS I.R. 270  
STA. 390+00.00 TO STA. 393+00.00

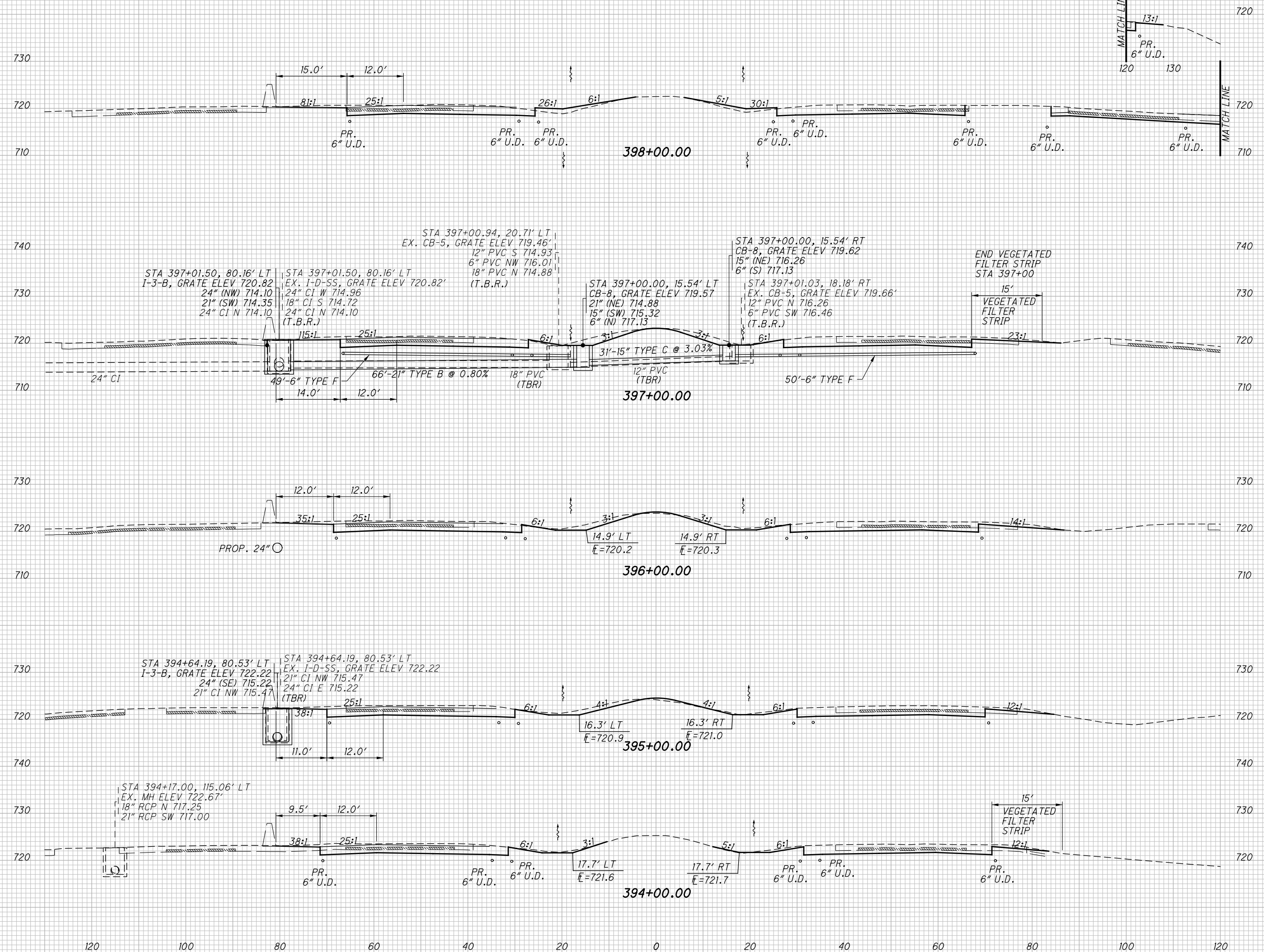
FRA - 270-52.72

33  
114

F:\FRA\92610\roadway\sheets\92610X5001.dgn 9/3/2014 3:53:59 PM jconley

SEEDING	
END WIDTH	SO. YDS.

END AREA		VOLUME		CALCULATED JDC	CHECKED RJM
CUT	FILL	CUT	FILL		



120 100 80 60 40 20 0 20 40 60 80 100 120

Approved for Construction 9-11-14

CROSS SECTIONS I.R. 270  
STA. 394+00.00 TO STA. 398+00.00

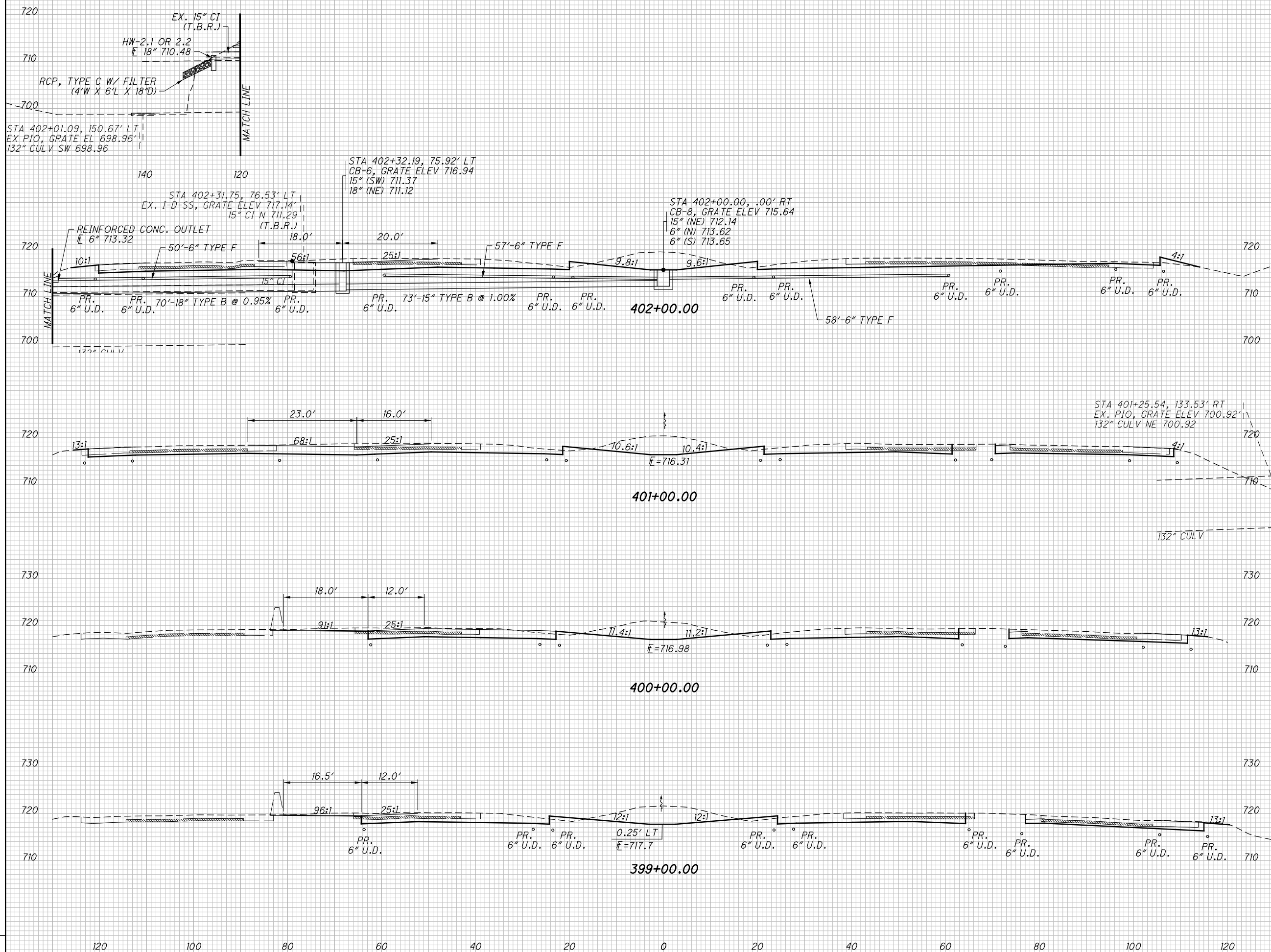
FRA - 270 - 52.72

F:\FRA\92610\roadway\sheets\92610XS001.dgn 9/3/2014 3:53:59 PM jconley



SEEDING	
END WIDTH	SO. YDS.

END AREA		VOLUME		CALCULATED JDC	CHECKED RJM
CUT	FILL	CUT	FILL		



CROSS SECTIONS I.R. 270  
STA. 399+00.00 TO STA. 402+00.00

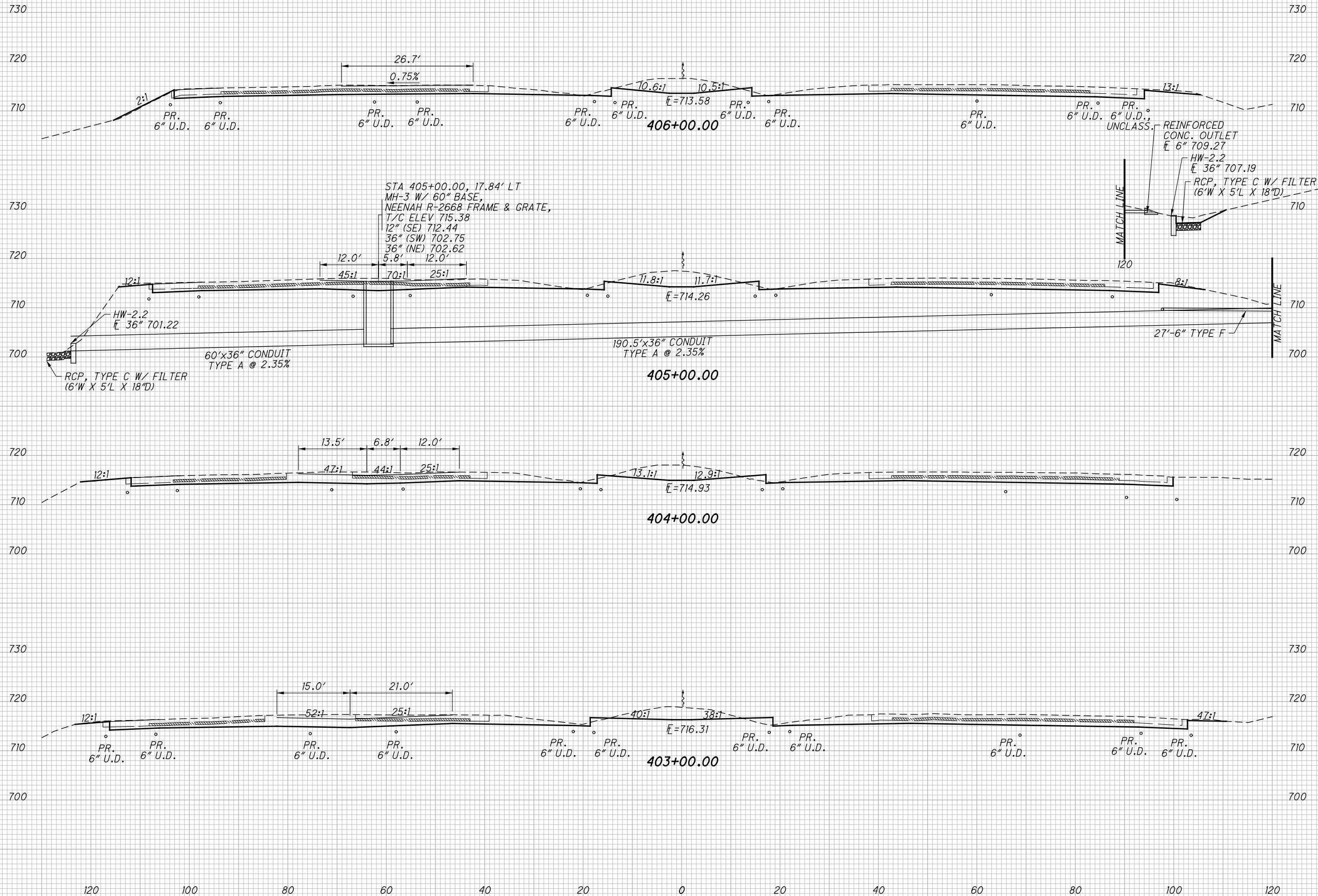
Approved for Construction 9-11-14

FRA - 270-52.72

F:\FRA\92610\roadway\sheet\92610XS001.dgn 9/3/2014 3:54:00 PM jconley

SEEDING  
END SO.  
WIDTH YDS.

END AREA  
CUT FILL  
VOLUME  
CUT FILL  
CALCULATED  
JDC  
CHECKED  
RJM



STA 405+00.00, 17.84' LT  
 MH-3 W/ 60" BASE,  
 NEENAH R-2668 FRAME & GRATE,  
 T/C ELEV 715.38  
 12" (SE) 712.44  
 36" (SW) 702.75  
 36" (NE) 702.62  
 5.8'

REINFORCED  
 CONC. OUTLET  
 E 6" 709.27  
 HW-2.2  
 E 36" 707.19  
 RCP, TYPE C W/ FILTER  
 (6'W X 5'L X 18"D)

60"x36" CONDUIT  
 TYPE A @ 2.35%  
 RCP, TYPE C W/ FILTER  
 (6'W X 5'L X 18"D)

190.5"x36" CONDUIT  
 TYPE A @ 2.35%

27'-6" TYPE F

F:\FRA\92610\roadway\sheets\92610XS001.dgn 9/11/2014 10:41:39 AM jconley

Approved for Construction 9-11-14

CROSS SECTIONS I.R. 270  
STA. 403+00.00 TO STA. 406+00.00

FRA - 270 - 52.72

36  
114

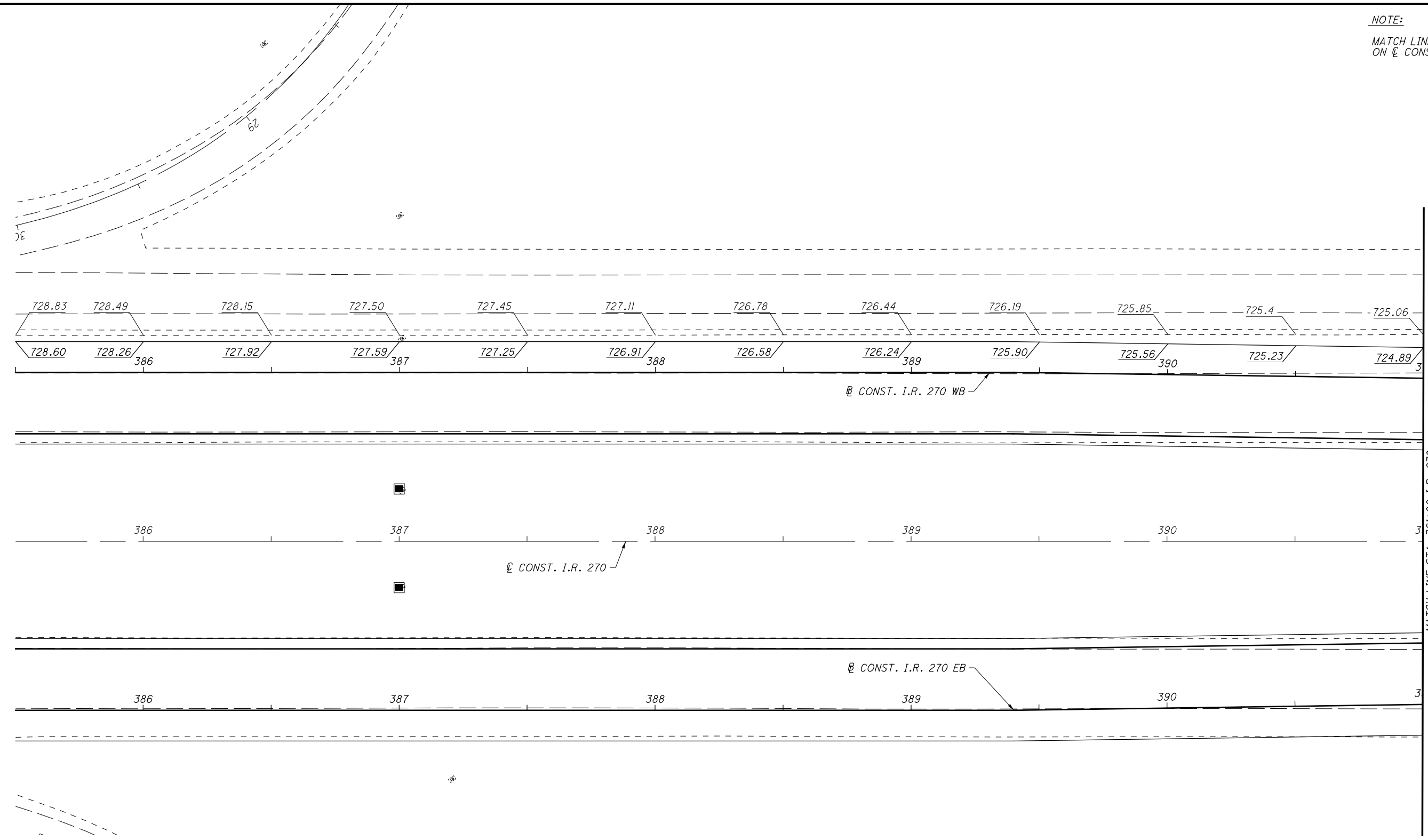
F:\FRA\92610\roadway\sheets\92610GI003a.dgn 9/3/2014 4:00:53 PM jconley

NOTE:  
MATCH LINE STATIONING BASED  
ON  $\varnothing$  CONSTRUCTION I.R. 270

CALCULATED  
JDC

CHECKED  
RJM

0 20 40  
HORIZONTAL  
SCALE IN FEET



Approved for Construction 9-11-14

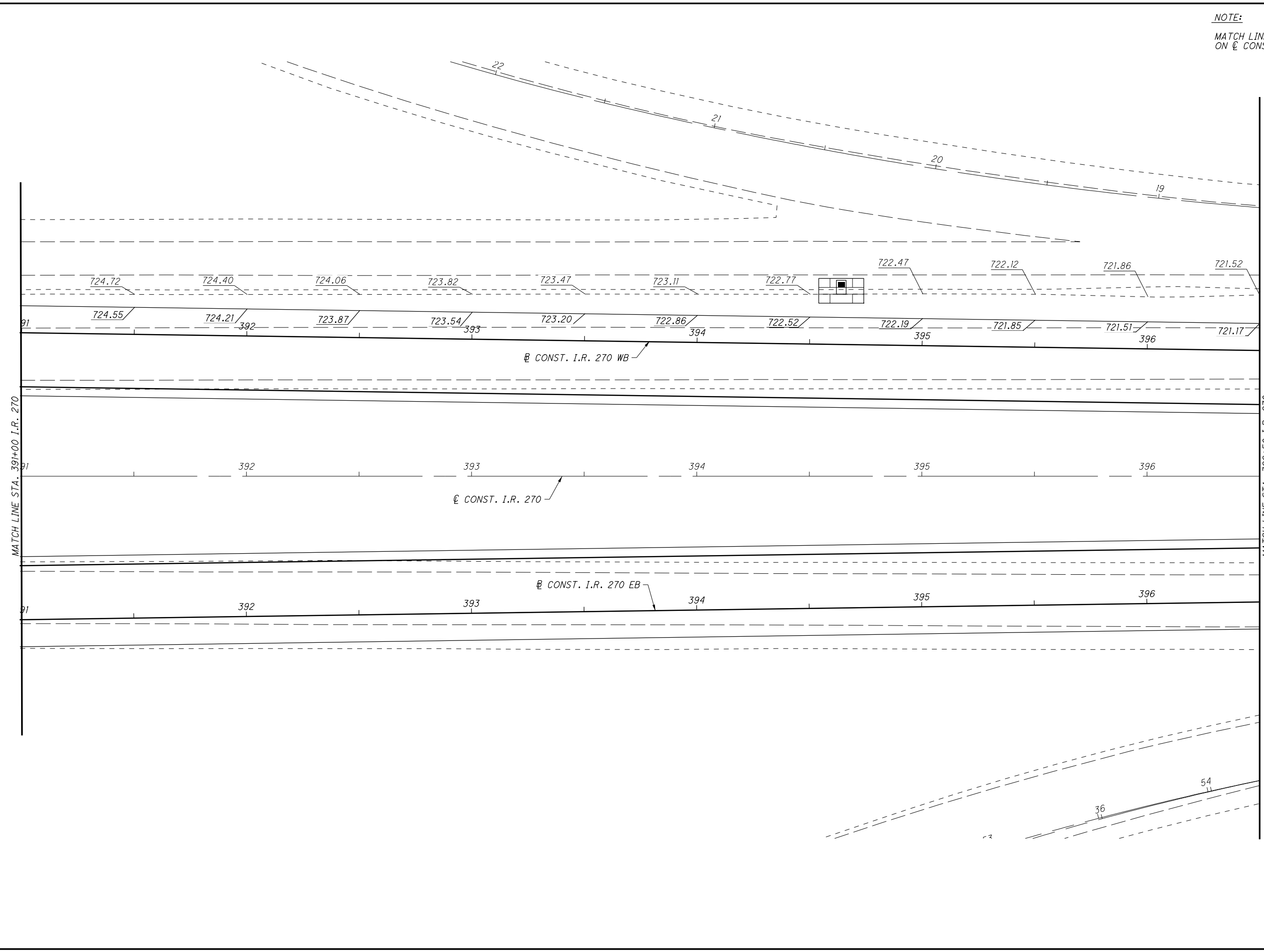
**INTERCHANGE DETAILS - RAMPS A & E**  
**STA. 385+50.00 TO STA. 391+00.00**

**FRA - 270 - 52.72**

NOTE:  
MATCH LINE STATIONING BASED  
ON  $\bar{C}$  CONSTRUCTION I.R. 270

CALCULATED	JDC
CHECKED	RJM

0 20 40  
HORIZONTAL  
SCALE IN FEET



Approved for Construction 9-11-14

**INTERCHANGE DETAILS - RAMPS A & E**  
**STA. 391+00.00 TO STA. 396+50.00**

**FRA - 270 - 52.72**

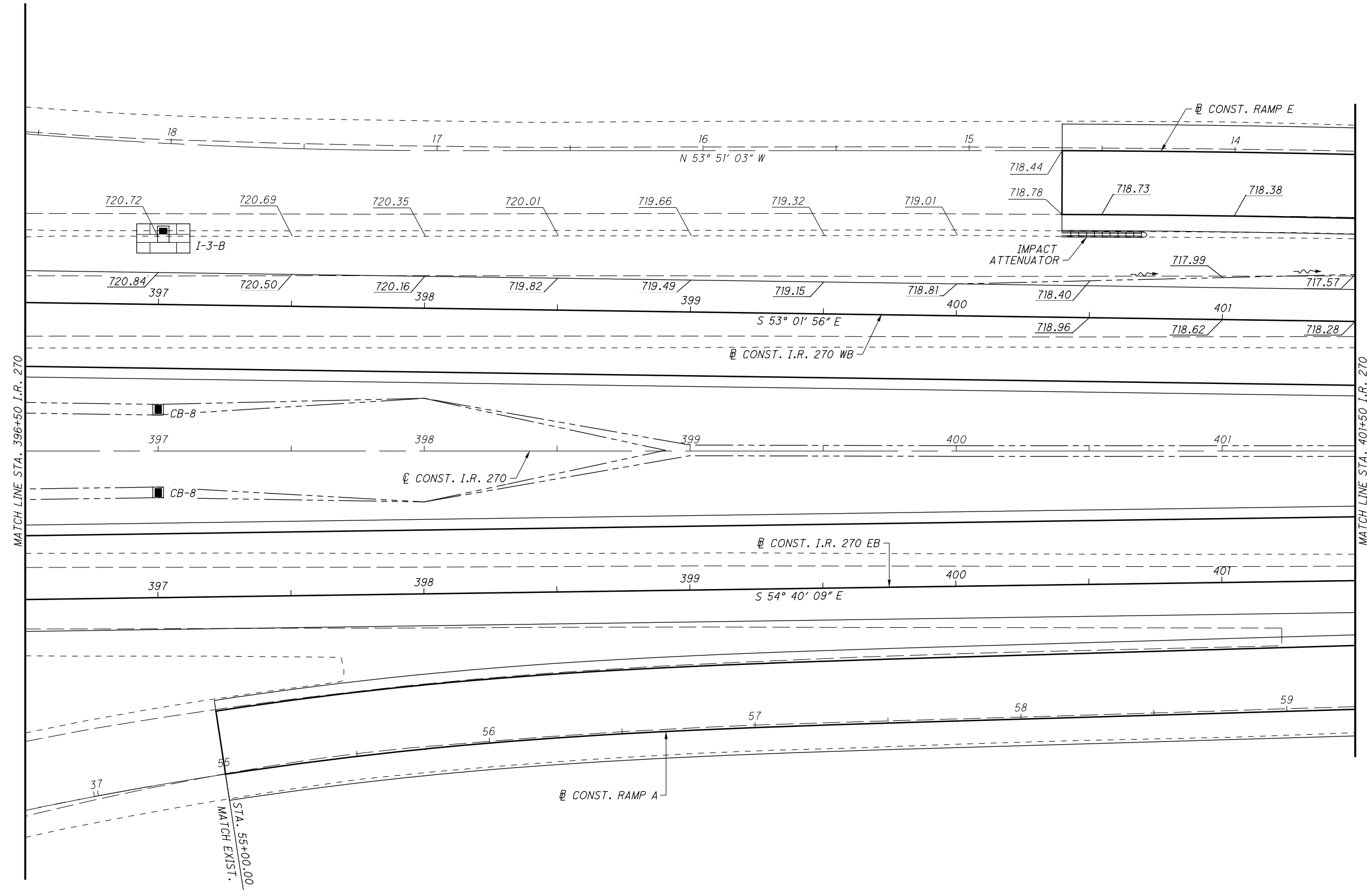
F:\FRA\92610\roadway\sheets\92610G1003c.dgn 9/3/2014 4:00:54 PM jconley

NOTE:  
MATCH LINE STATIONING BASED  
ON  $\varnothing$  CONSTRUCTION I.R. 270

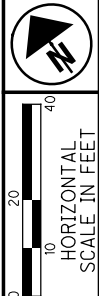
CALCULATED	JDC
CHECKED	RJM

**INTERCHANGE DETAILS - RAMPS A & E**  
**STA. 396+50.00 TO STA. 401+50.00**

**FRA - 270 - 52.72**

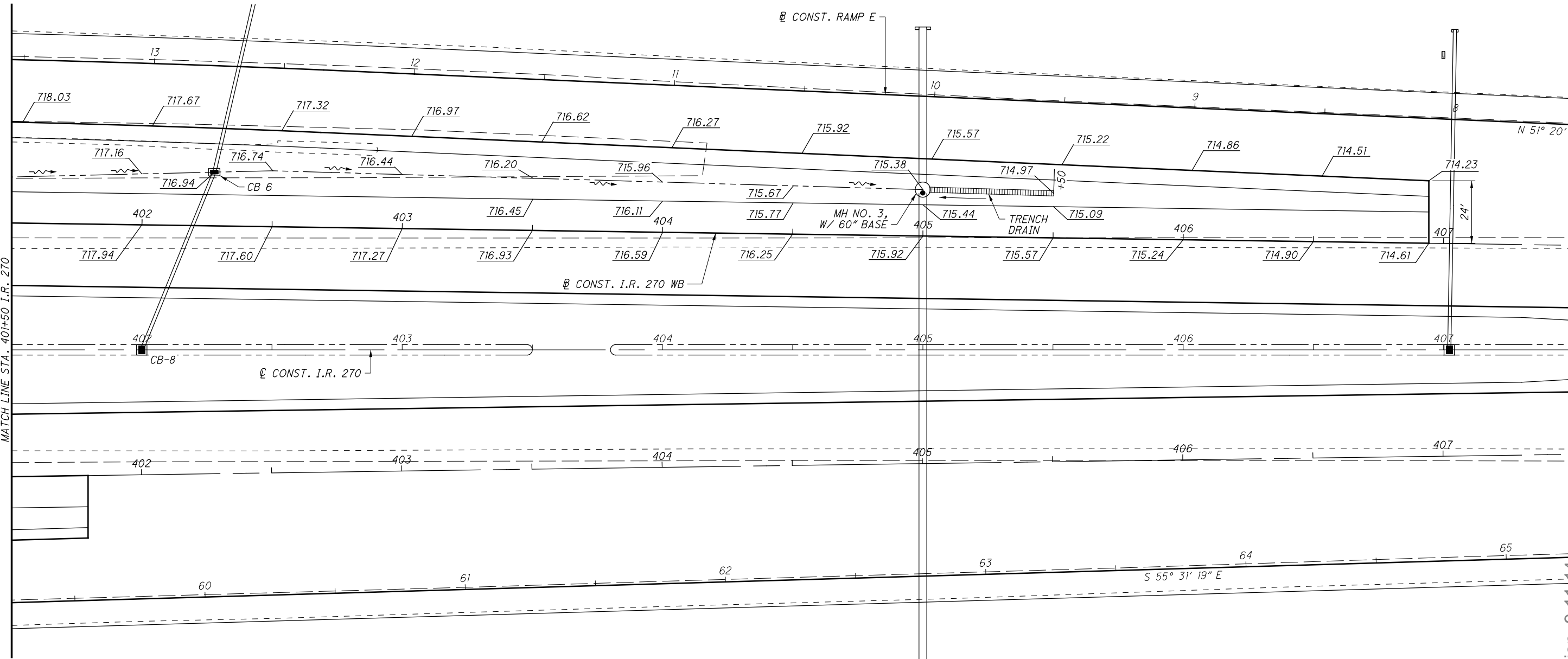


Approved for Construction 9-11-14



MATCH LINE STA. 401+50 I.R. 270

MATCH LINE STA. 407+50 I.R. 270



**NOTE:**  
 MATCH LINE STATIONING BASED  
 ON  $\varnothing$  CONSTRUCTION I.R. 270



CALCULATED  
 JDC  
 CHECKED  
 RJM

**INTERCHANGE DETAIL - RAMPS A & E**  
**STA. 401+50.00 TO STA. 407+50.00**

Approved for Construction 9-11-14

**FRA - 270 - 52.72**