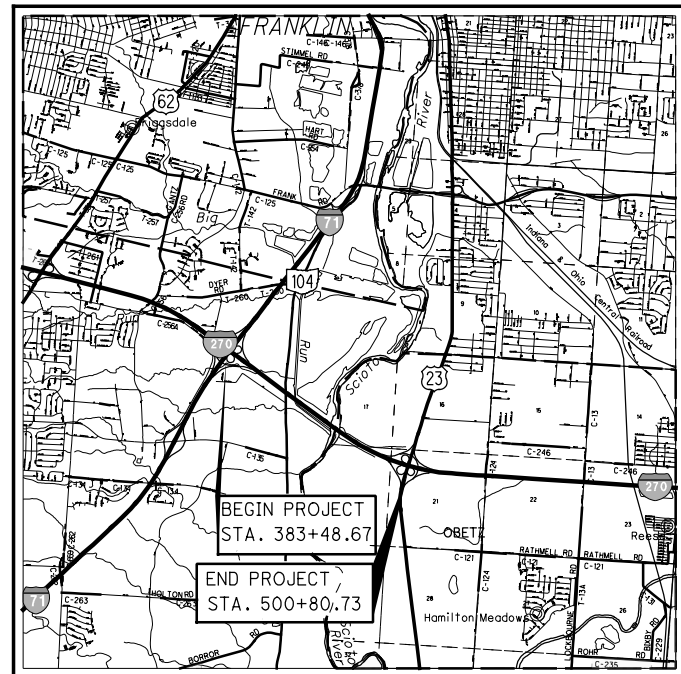


STATE OF OHIO  
DEPARTMENT OF TRANSPORTATION

# FRA-270-52.72

## JACKSON TOWNSHIP HAMILTON TOWNSHIP FRANKLIN COUNTY



LOCATION MAP

LATITUDE: N39°53'13" LONGITUDE: W83°01'45"



PORTION TO BE IMPROVED	-----
INTERSTATE HIGHWAY	=====
FEDERAL ROUTES	===== -----
STATE ROUTES	----- -----
COUNTY & TOWNSHIP ROADS	----- -----
OTHER ROADS	-----

**DESIGN DESIGNATION**

	FRA-270-52.72	FRA-270-52.96	FRA-270-53.60	FRA-270-54.97
CURRENT ADT (2012)	83,560	80,180	110,720	83,310
DESIGN YEAR ADT (2032)	103,520	99,130	140,730	109,160
DESIGN HOURLY VOLUME (2032)	10,350	9,910	14,080	10,920
DIRECTIONAL DISTRIBUTION	.53	.53	.53	.53
TRUCKS (24 HOUR B&C)	.19	.19	.19	.19
DESIGN SPEED	70	70	70	70
LEGAL SPEED	65	65	65	65
DESIGN FUNCTIONAL CLASSIFICATION:				
INTERSTATE	INTERSTATE	INTERSTATE	INTERSTATE	INTERSTATE
NHS PROJECT	YES	YES	YES	YES

**DESIGN EXCEPTIONS**

**UNDERGROUND UTILITIES**  
CONTACT BOTH SERVICES  
CALL TWO WORKING DAYS  
**BEFORE YOU DIG**

CALL  
**1-800-362-2764**  
(TOLL FREE)

OHIO UTILITIES PROTECTION SERVICE  
NON-MEMBERS  
MUST BE CALLED DIRECTLY

OIL & GAS PRODUCERS UNDERGROUND  
PROTECTION SERVICE CALL: **1-800-925-0988**

PLAN PREPARED BY:  
BARR & PREVOST  
2800 CORPORATE EXCHANGE DR., STE 240  
COLUMBUS, OH 43231  
(614) 714-0270 FAX (614) 714-0323

ENGINEERS SEAL:

SIGNED: *Randy McClellan*  
DATE: 10/2/13

**INDEX OF SHEETS:**

TITLE SHEET	1
SCHEMATIC PLAN	2-4
TYPICAL SECTIONS	5-8
GENERAL NOTES	9-10
SUBSUMMARIES	11-19
PLAN AND PROFILE - I.R. 270	20-29
PLAN AND PROFILE - RAMP M	30
CROSS SECTIONS - I.R. 270	31-57
CROSS SECTIONS - RAMP M	58-59
SUPERELEVATION TABLES	60-63
INTERCHANGE DETAILS	64-75
PAVEMENT DETAILS	76
UNDERDRAIN DETAILS	77-87
CULVERT DETAILS	88-89
BARRIER DETAILS	90-96
MISCELLANEOUS DETAILS	97-101
TRAFFIC CONTROL	102-114

STANDARD CONSTRUCTION DRAWINGS						SUPPLEMENTAL SPECIFICATIONS		SPECIAL PROVISIONS	
BP-2.3	7/19/13	F-3.1	7/19/13	RM-4.3	1/18/13	800	7/19/13		
BP-3.1	4/20/12	F-3.2	4/16/10	RM-4.6	7/19/13	832	5/5/09		
BP-5.1	7/19/13					835	12/31/12		
		HL-10.13	10/16/09	TC-7.65	1/21/11	843	4/18/03		
CB-3.1	1/18/13	HL-20.11	1/19/07	TC-12.30	1/21/11				
				TC-21.10	1/19/07				
HW-2.2	1/18/13	MGS-1.1	7/19/13	TC-21.20	1/18/13				
		MGS-2.1	7/19/13	TC-21.50	1/18/13				
I-2.4	1/18/13	MGS-3.1	7/19/13	TC-22.10	1/19/01				
		MGS-3.2	1/18/13	TC-22.20	1/18/13				
DM-1.1	1/18/13	MGS-4.2	7/19/13						
DM-1.2	1/18/13	MGS-5.2	7/19/13						
DM-1.4	1/18/13	MGS-5.3	7/19/13						
DM-4.1	7/19/13	MGS-6.1	7/19/13						
		MGS-6.2	1/18/13						
F-1.1	7/19/13								

**PROJECT DESCRIPTION**

IMPROVEMENT OF 2.25 MILES OF FRA-270 WITH AN ADDITIONAL THROUGH LANE AND ONE AUXILIARY LANE. WORK INCLUDES REHABILITATING AND WIDENING THE TWIN STRUCTURES OVER SCIOTO BIG RUN, REMOVING THE TWIN STRUCTURES OVER ACCESS ROAD AND REPLACING WITH ROADWAY FILL, RECONSTRUCTION OF INTERCHANGE RAMP, REPLACEMENT OF FULL DEPTH PAVEMENT AND SHOULDERS, GUARDRAIL REPLACEMENT, INSTALLATION OF CABLE BARRIER, ROADSIDE GRADING, TRAFFIC CONTROL, AND REPLACING THE STORM SEWER SYSTEM.

PROJECT EARTH DISTURBED AREA: 52.2 ACRES  
ESTIMATED CONTRACTOR EARTH DISTURBED AREA: 1.00 ACRES  
NOTICE OF INTENT EARTH DISTURBED AREA: 53.2 ACRES

**LIMITED ACCESS**

THIS IMPROVEMENT IS ESPECIALLY DESIGNED FOR THROUGH TRAFFIC AND HAS BEEN DECLARED A LIMITED ACCESS HIGHWAY OR FREEWAY BY ACTION OF THE DIRECTOR IN ACCORDANCE WITH THE PROVISIONS OF SECTION 5511.02 OF THE OHIO REVISED CODE.

**2013 SPECIFICATIONS**

THE STANDARD SPECIFICATIONS OF THE STATE OF OHIO, DEPARTMENT OF TRANSPORTATION, INCLUDING CHANGES AND SUPPLEMENTAL SPECIFICATIONS LISTED IN THE PROPOSAL SHALL GOVERN THIS IMPROVEMENT.

UNDER AUTHORITY OF SECTION 4511.21, DIVISION (H) OF THE OHIO REVISED CODE, THE REVISED PRIMA FACIE SPEED LIMITS AS INDICATED HEREIN ARE DETERMINED TO BE REASONABLE AND SAFE, AND ARE HEREBY ESTABLISHED FOR THE DURATION OF THIS PROJECT. THE PRIMA FACIE SPEED LIMIT OF LIMITS HEREBY ESTABLISHED SHALL BECOME EFFECTIVE WHEN APPROPRIATE SIGNS GIVING NOTICE THEREOF ARE ERECTED.

APPROVED \_\_\_\_\_  
DATE \_\_\_\_\_ DISTRICT DEPUTY DIRECTOR

APPROVED \_\_\_\_\_  
DATE \_\_\_\_\_ DIRECTOR, DEPARTMENT OF TRANSPORTATION

BU-11 OVERHEAD SIGNS APPROVED FOR CONSTRUCTION

RAILROAD INVOLVEMENT

CONSTRUCTION PROJECT NO.

PID NO.

FEDERAL PROJECT NO.

FRA-270-52.72

NONE


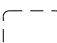

133006

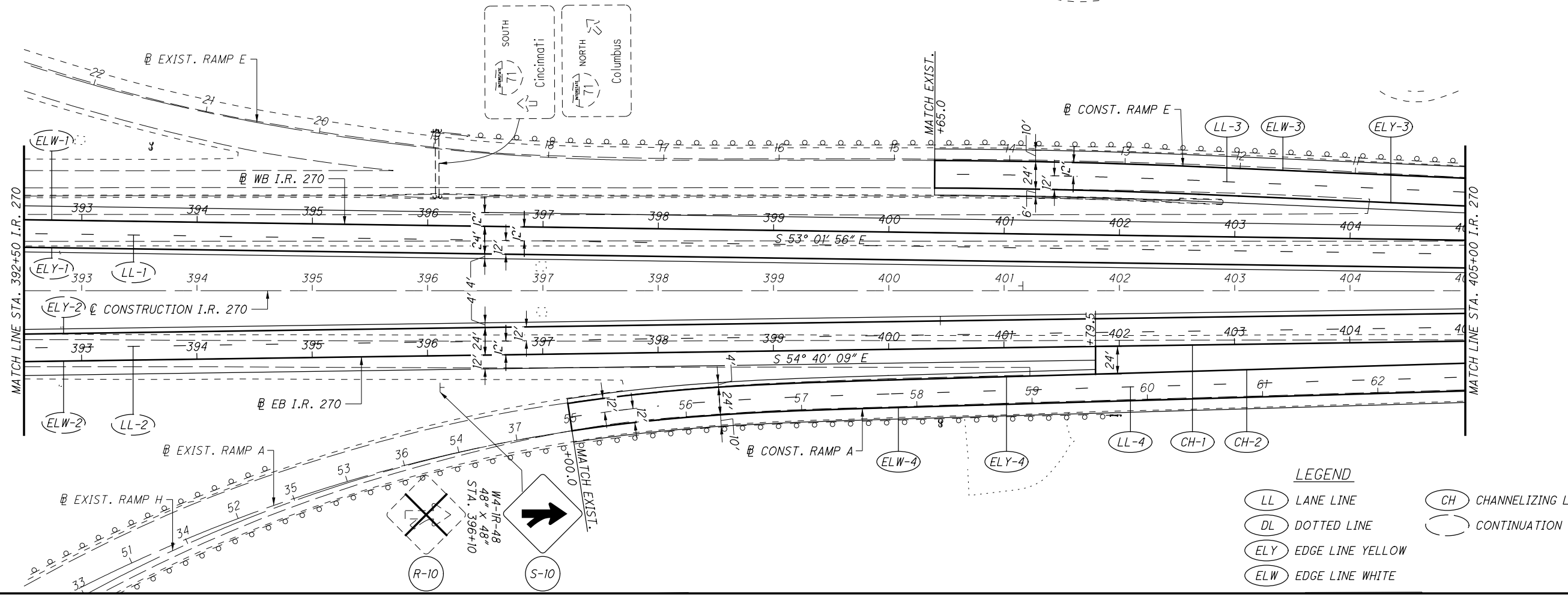
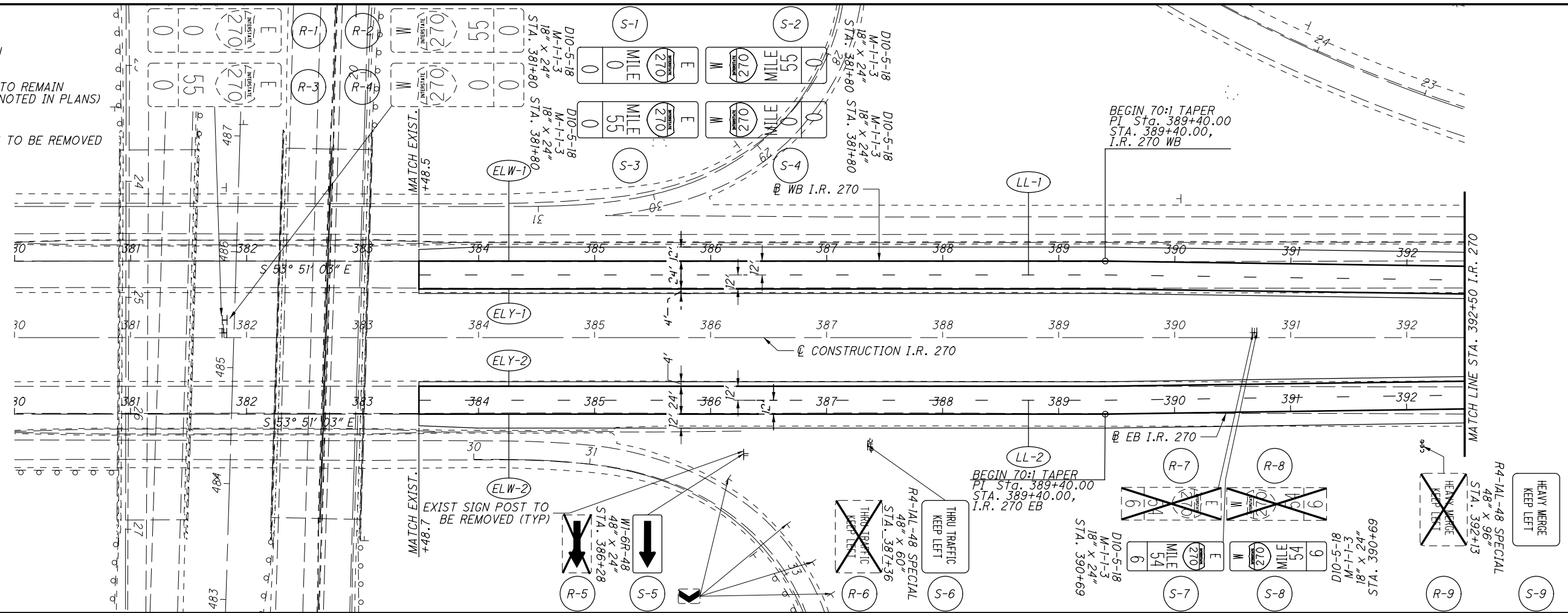
92610

NON-FEDERAL







F:\FRA\92610\roadway\sheets\92610TP001.dgn 10/2/2013 10:15:04 AM bshepherd

**LEGEND**

-  PROPOSED SIGN
-  EXISTING SIGN TO REMAIN (RELOCATIONS NOTED IN PLANS)
-  EXISTING SIGNS TO BE REMOVED



**LEGEND**

-  LL LANE LINE
-  DL DOTTED LINE
-  ELY EDGE LINE YELLOW
-  ELW EDGE LINE WHITE
-  CH CHANNELIZING LINE
-  CONTINUATION

BU-11 OVERHEAD SIGNS APPROVED FOR CONSTRUCTION

TRAFFIC CONTROL - I.R. 270  
BEGIN TO STA. 405+00

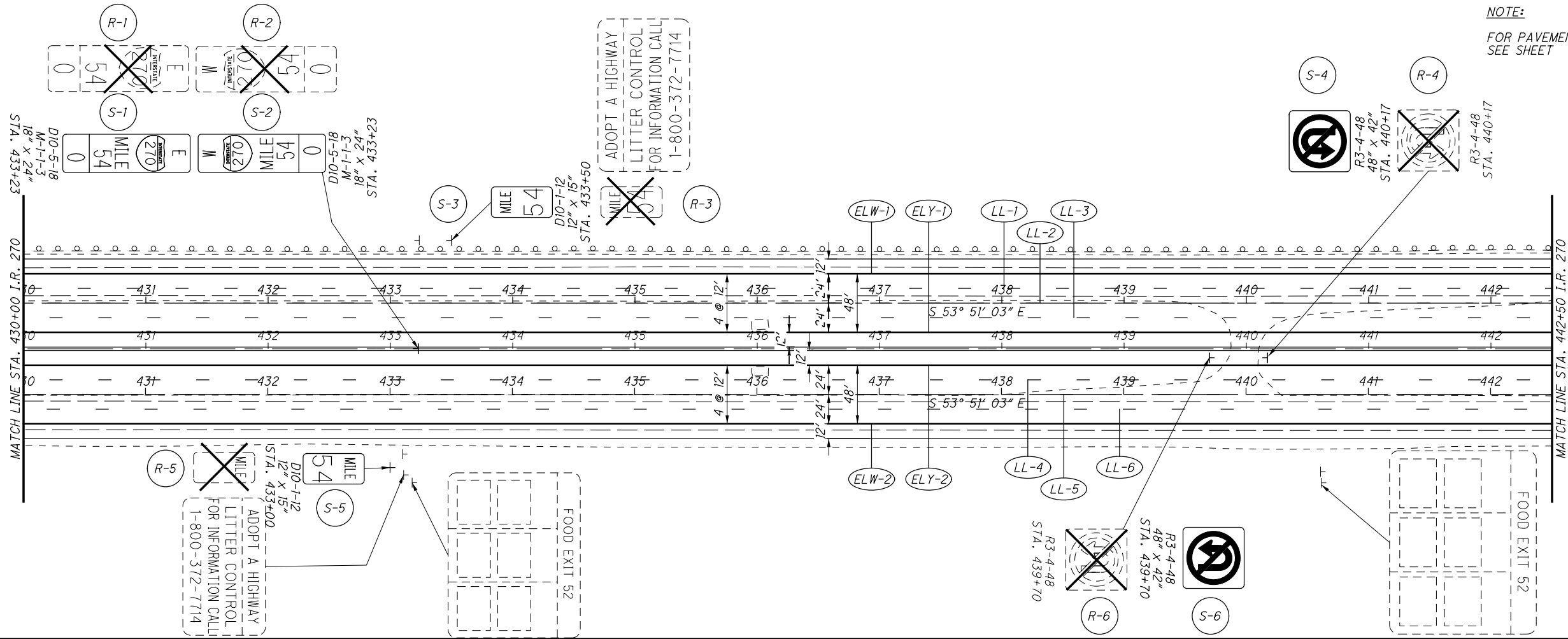
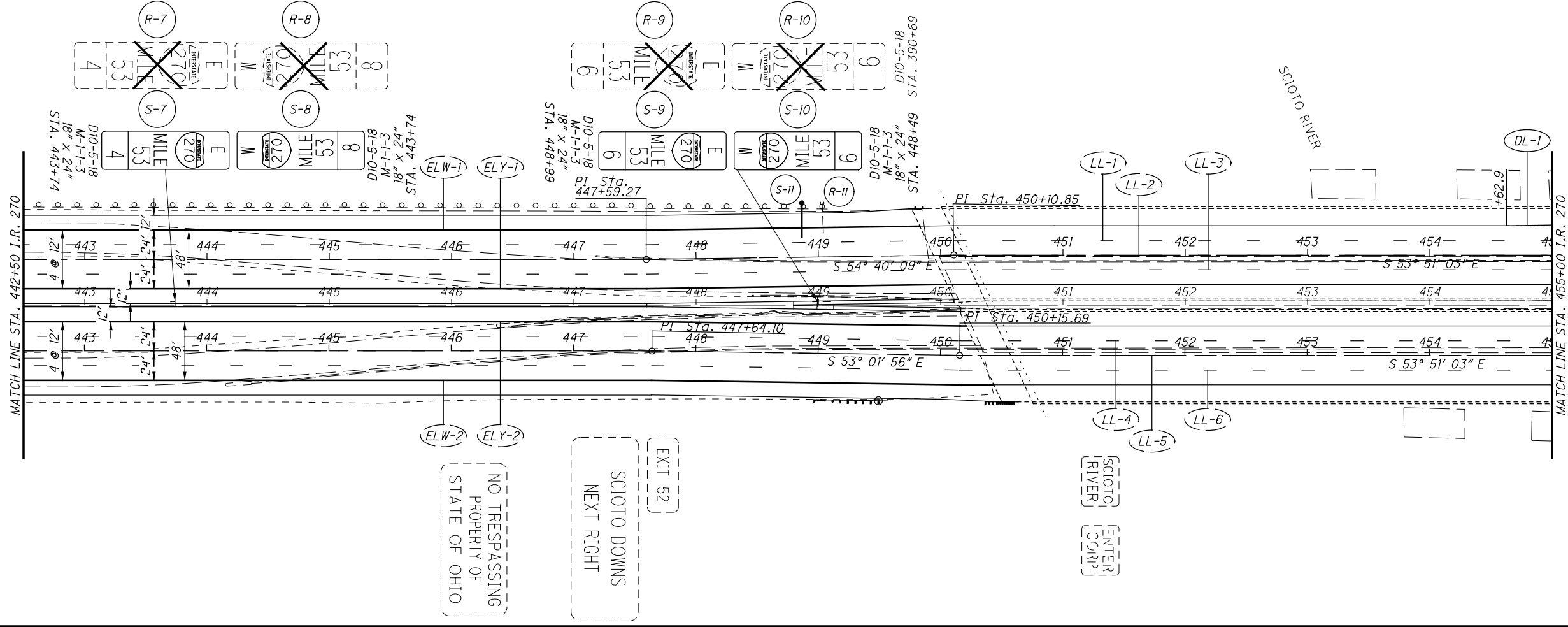
FRA-270-52.72

CALCULATED JDC CHECKED RJM

0 50 100  
25  
HORIZONTAL SCALE IN FEET



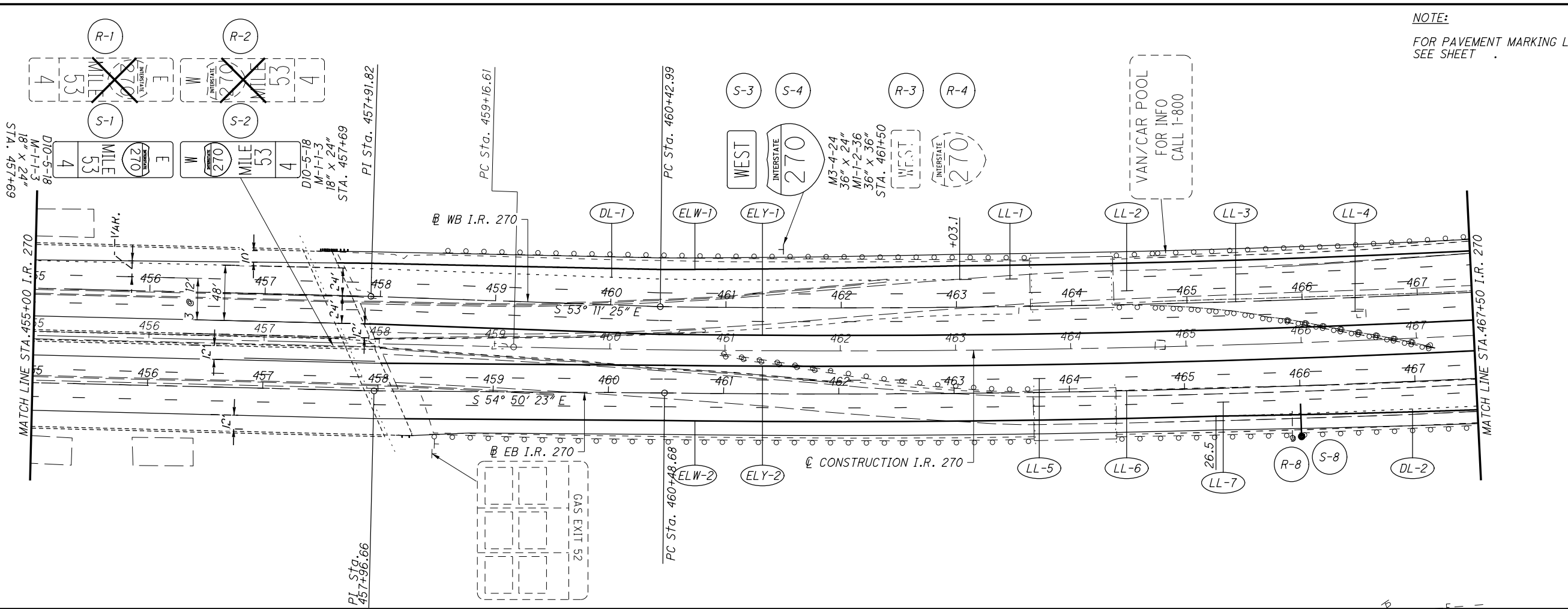
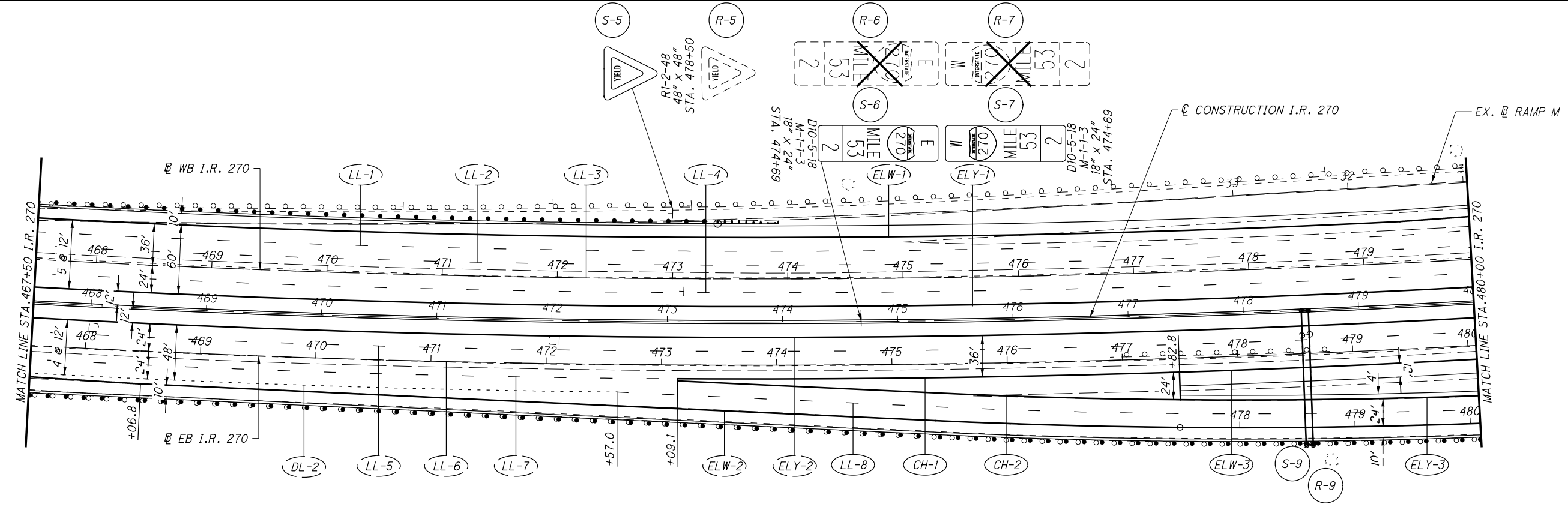




NOTE:  
FOR PAVEMENT MARKING LEGEND,  
SEE SHEET .

CALCULATED	JDC
CHECKED	RJM

BU-11 OVERHEAD SIGNS APPROVED FOR CONSTRUCTION  
TRAFFIC CONTROL - I.R. 270  
STA. 430+00 TO STA. 455+00



NOTE:  
FOR PAVEMENT MARKING LEGEND,  
SEE SHEET .

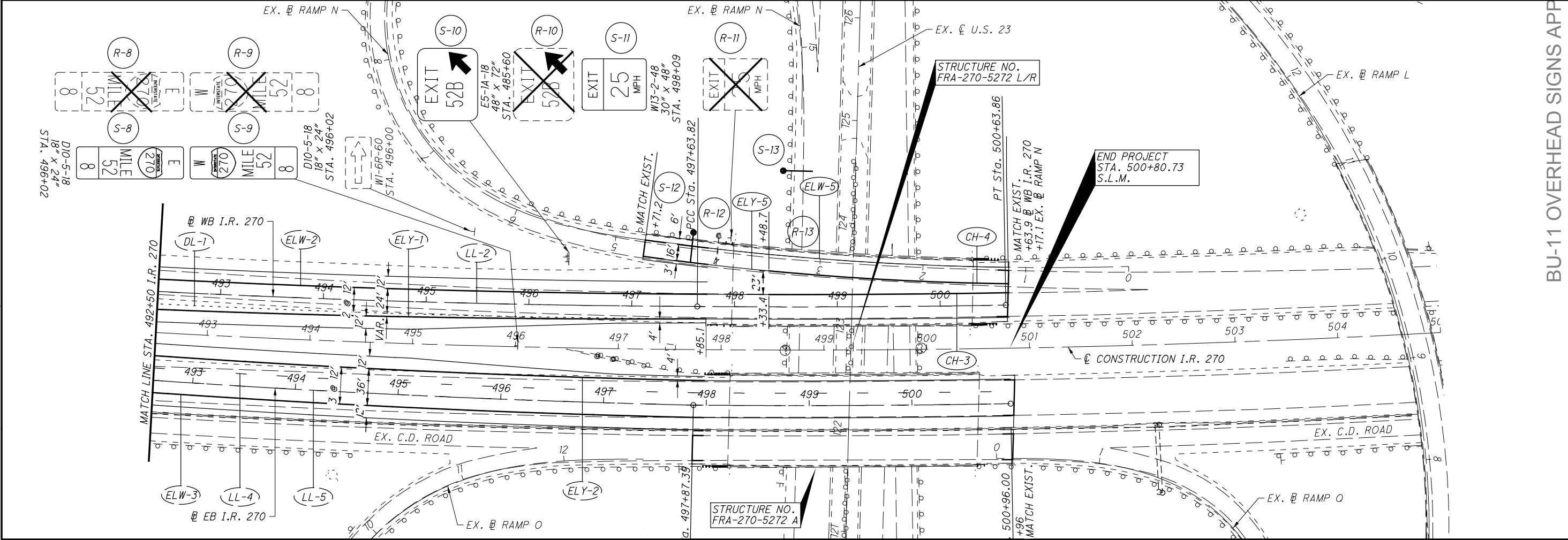
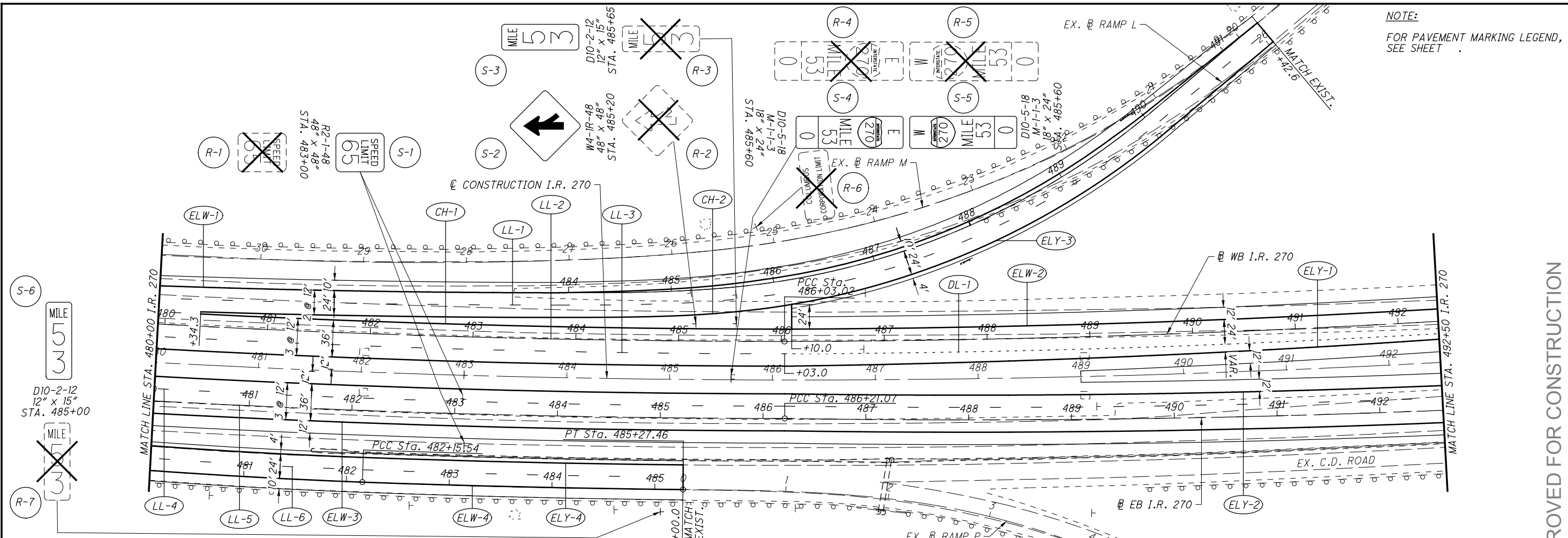
CALCULATED JDC CHECKED RJM

0 50 100  
25  
HORIZONTAL SCALE IN FEET

BU-11 OVERHEAD SIGNS APPROVED FOR CONSTRUCTION

TRAFFIC CONTROL - I.R. 270  
STA. 455+00 TO STA. 480+00

FRA - 270-52.72



NOTE:  
FOR PAVEMENT MARKING LEGEND,  
SEE SHEET .

CALCULATED JDC CHECKED RJM

0 50 100  
25  
HORIZONTAL SCALE IN FEET

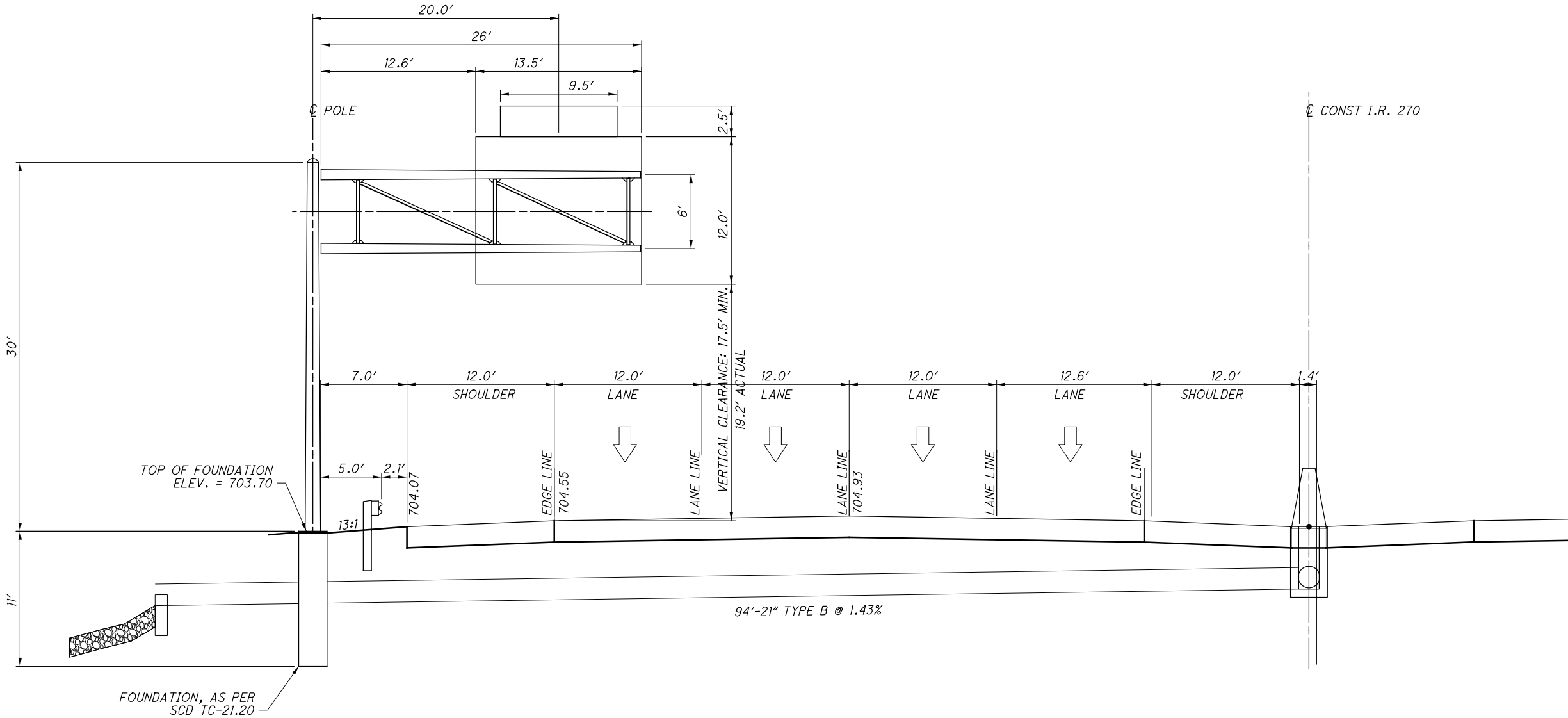
BU-11 OVERHEAD SIGNS APPROVED FOR CONSTRUCTION

TRAFFIC CONTROL - I.R. 270  
STA. 480+00 TO END

FRA-270-52.72

106  
114





STA. 420+48.00 80.4' LEFT  
TC-12.30, DESIGN 9

BU-11 OVERHEAD SIGNS APPROVED FOR CONSTRUCTION

SIGN ELEVATION DETAIL  
STA. 420+48

FRA - 270-52.72

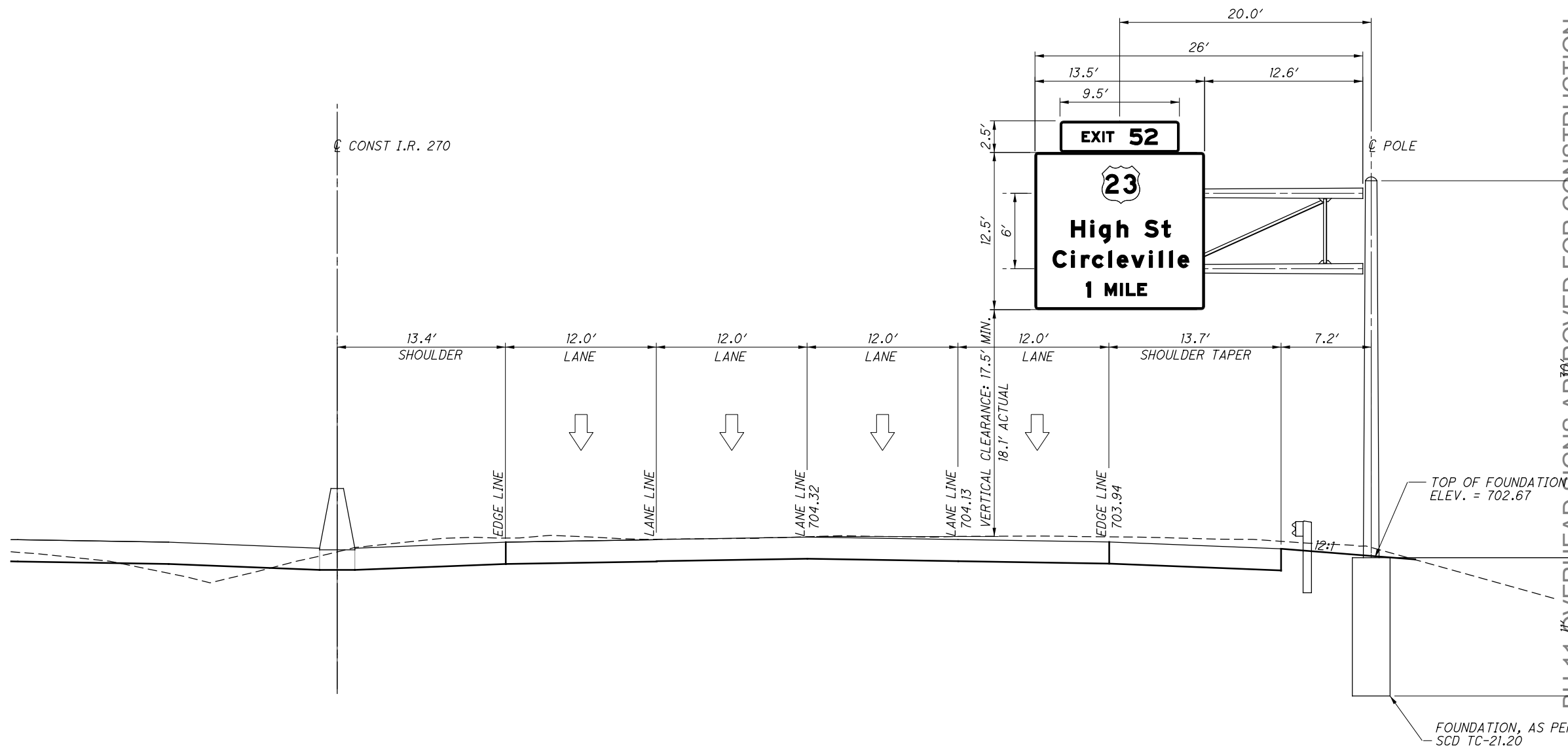
108  
114

CALCULATED  
WES  
CHECKED  
RJM



F:\FRA\92610\roadway\sheets\92610TE002.dgn 10/2/2013 10:15:08 AM bshepherd





STA. 425+48.00 82.25' RIGHT  
TC-12.30, DESIGN 9

\* FOR SIGN DETAILS AND DIMENSIONS,  
SEE SHEET

BU-11 OVERHEAD SIGNS APPROVED FOR CONSTRUCTION

SIGN ELEVATION DETAIL

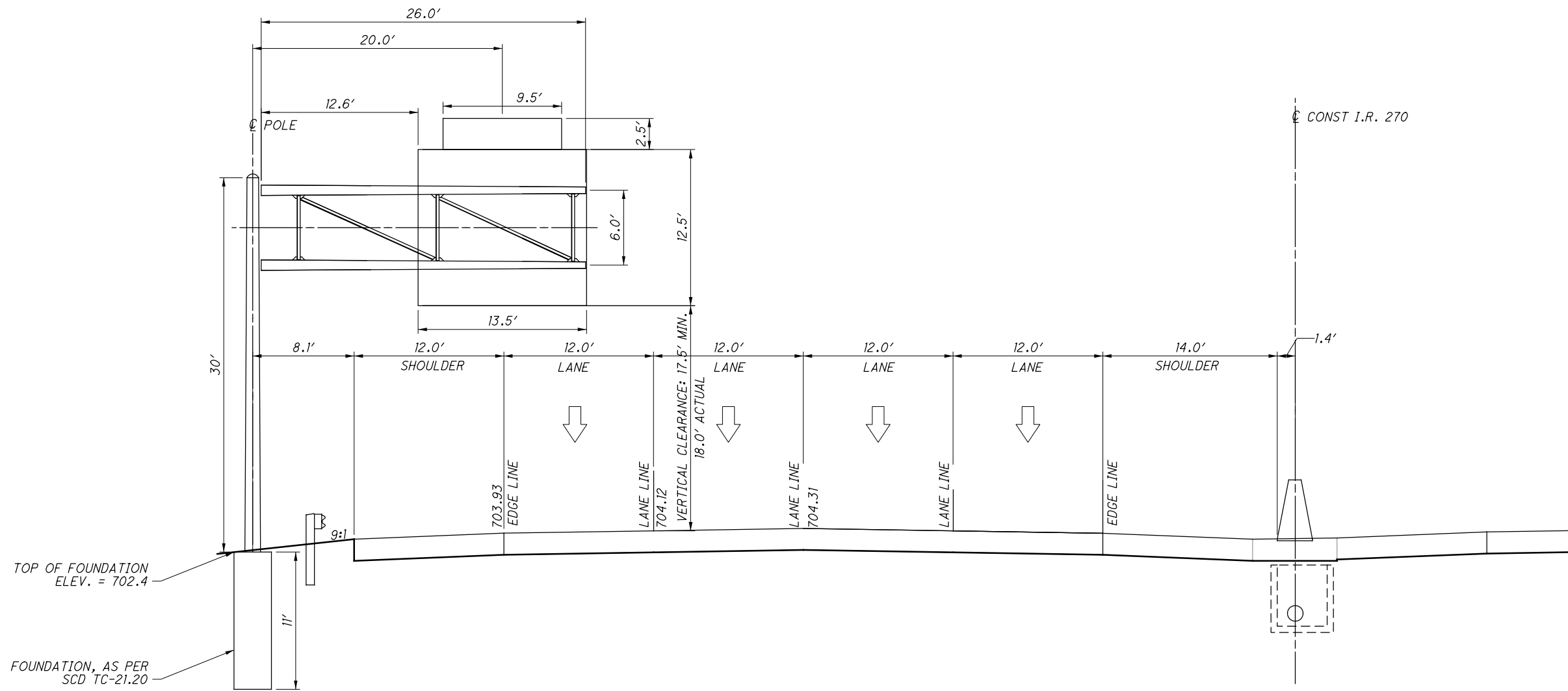
STA. 425+48

FRA-270-52.72

CALCULATED  
WES  
CHECKED  
RJM



F:\FRA\92610\roadway\sheets\92610TE004.dgn 10/2/2013 10:15:08 AM bshepherd



STA. 448+85.00 83.5' LEFT  
TC-12.30, DESIGN 9

BU-11 OVERHEAD SIGNS APPROVED FOR CONSTRUCTION

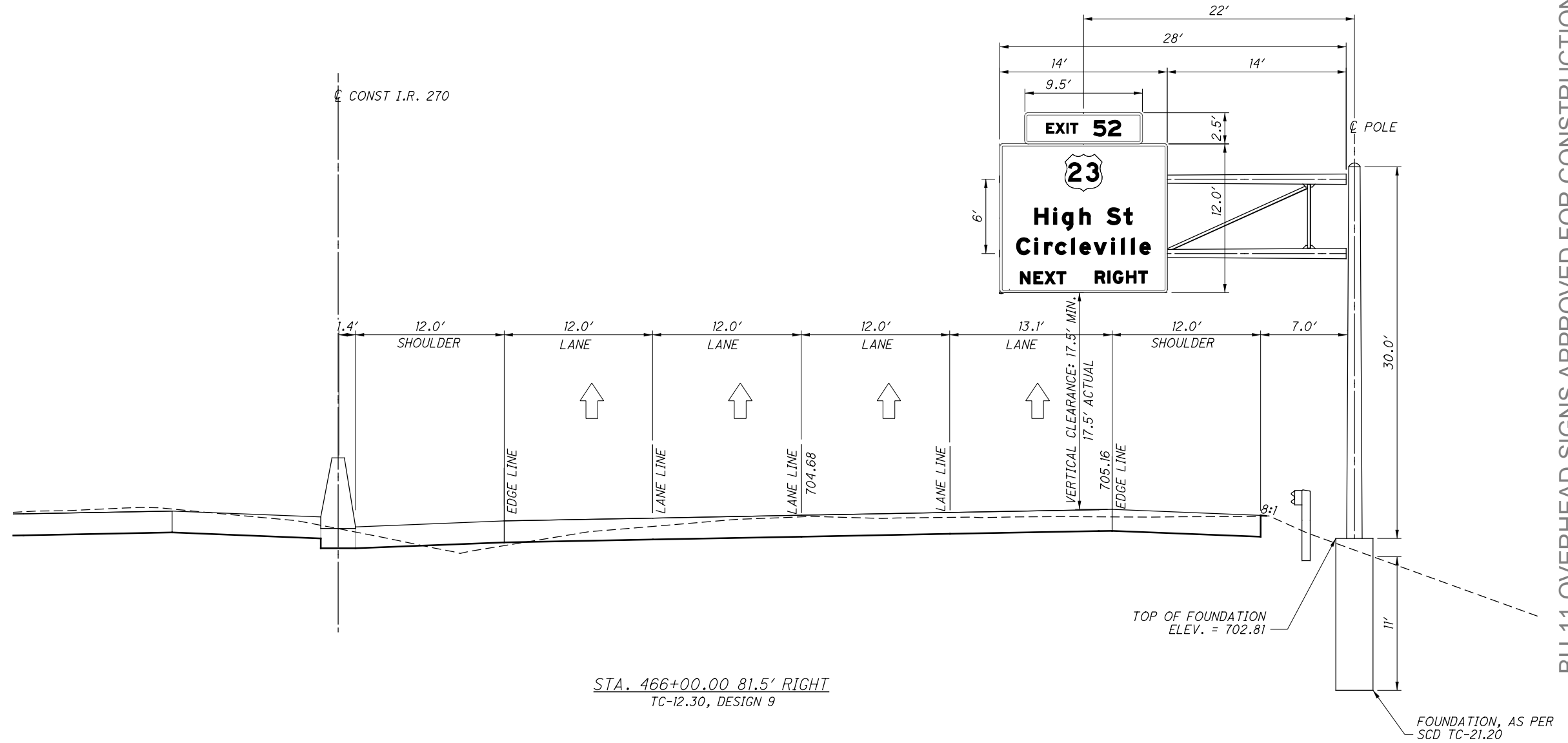
SIGN ELEVATION DETAIL  
STA. 448+85

FRA - 270-52.72

110  
114

CALCULATED  
WES  
CHECKED  
RJM

0 20 40  
HORIZONTAL  
SCALE IN FEET



STA. 466+00.00 81.5' RIGHT  
TC-12.30, DESIGN 9

BU-11 OVERHEAD SIGNS APPROVED FOR CONSTRUCTION

SIGN ELEVATION DETAIL

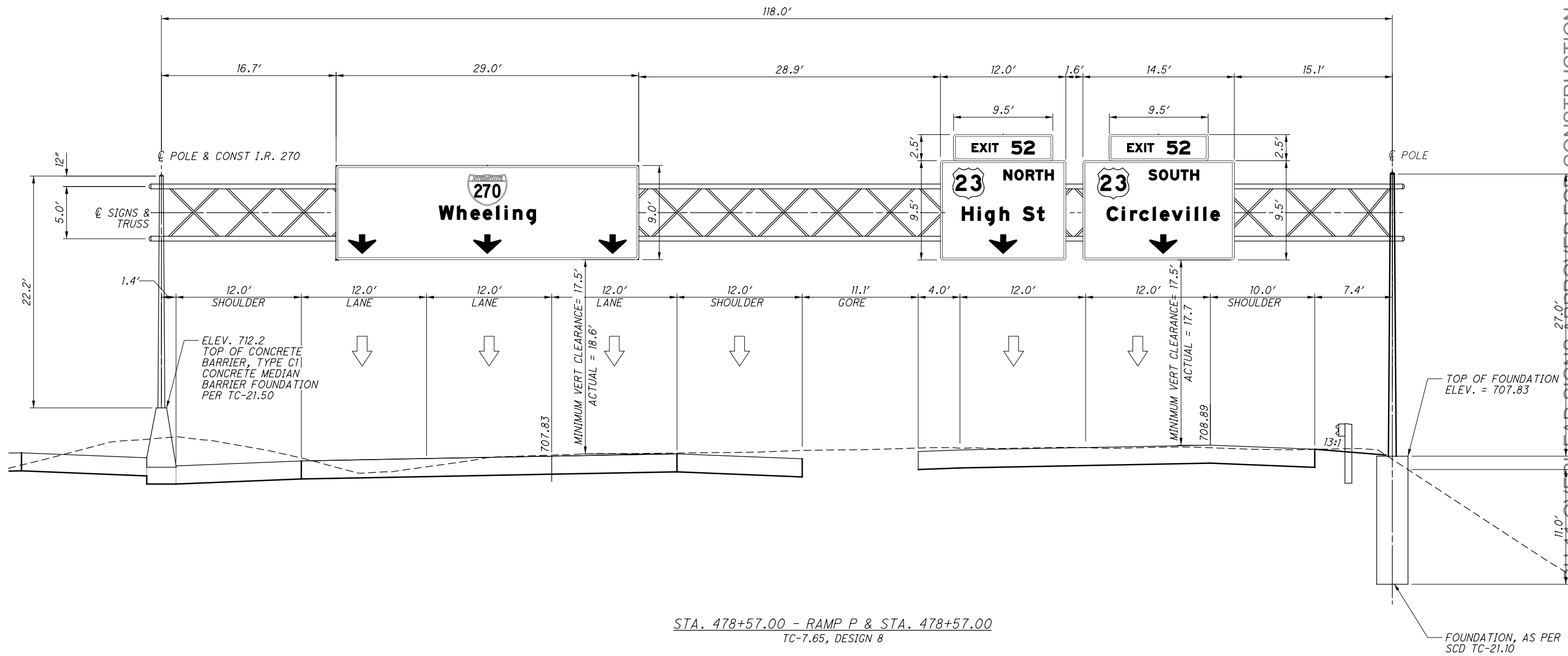
STA. 466 +00

FRA - 270 - 52.72

CALCULATED  
WES  
CHECKED  
RJM



F:\FRA\92610\roadway\sheets\92610TE006.dgn 10/2/2013 10:15:09 AM bshpherd



STA. 478+57.00 - RAMP P & STA. 478+57.00  
TC-7.65, DESIGN 8

CALCULATED	WES
CHECKED	FJM

0 10 20 40  
HORIZONTAL  
SCALE IN FEET

BU-11 OVERHEAD SIGNS APPROVED FOR CONSTRUCTION

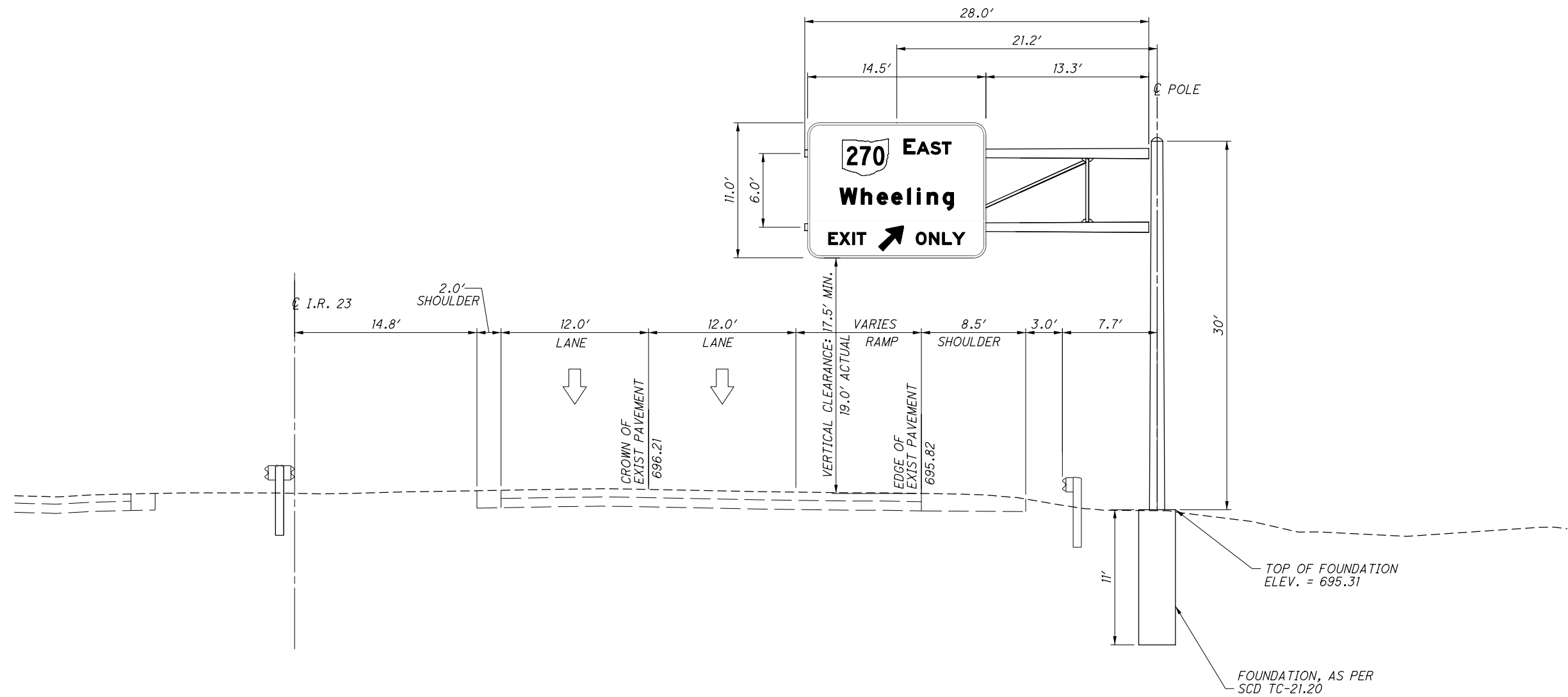
SIGN ELEVATION DETAIL

STA. 478+57

FRA - 270-52.72

112  
114





STA. 124+50.00 70.45' LT OFFSET (LOOKING DOWN STATION)

TC-12.30, DESIGN 9

\* FOR SIGN DETAILS AND DIMENSIONS, SEE SHEET

BU-11 OVERHEAD SIGNS APPROVED FOR CONSTRUCTION

SIGN ELEVATION DETAIL

STA. 124+50

FRA - 270-52.72

114

CALCULATED  
WES  
CHECKED  
RJM

0 10 20 40  
HORIZONTAL  
SCALE IN FEET