

**ITEM 614 - WORK ZONE PAVEMENT MARKING, CLASS I, AS PER PLAN**

THIS WORK CONSISTS OF FURNISHING AND APPLYING WET REFLECTIVE (WR) OPTICS (BEADS OR ELEMENTS), GLASS BEADS, AND TRAFFIC PAINT ACCORDING TO 640, 740, AND THE ADDITIONAL REQUIREMENTS SPECIFIED BELOW.

FURNISH MATERIALS CONFORMING TO:  
 TRAFFIC PAINT ..... 740.02  
 GLASS BEADS ..... 740.09

FURNISH ONE OF THE FOLLOWING WET REFLECTIVE OPTICS: 3M CONNECTED ROADS ALL WEATHER ELEMENTS SERIES 50/51, POTTERS INDUSTRIES VISI-ULTRA, SWARCO DURALUX, OR APPROVED EQUAL.

IN ADDITION TO THE REQUIREMENTS OF 614.11, FURNISH EQUIPMENT CAPABLE OF APPLYING WR OPTICS AT THE TIME OF LINE PLACEMENT.

ENSURE THE PAVEMENT SURFACE IS FREE OF LOOSE MATERIAL AND COMPLETELY DRY PRIOR TO THE APPLICATION OF THE PAVEMENT MARKINGS.

PLACE TRAFFIC PAINT AT A THICKNESS OF 20 MILS (508 M<sup>2</sup>). DROP WR OPTICS FROM THE FORWARD-MOST BEAD APPLICATOR GUN AT A MINIMUM RATE OF 7 POUNDS PER 100 SQUARE FEET (3.4 KG PER 10 M). DROP GLASS BEADS AT A MINIMUM RATE OF 8 POUNDS PER 100 SQUARE FEET (3.9 KG PER 10 M<sup>2</sup>) FROM THE REAR BEAD APPLICATOR GUN.

THE DEPARTMENT WILL MEASURE PAVEMENT MARKINGS COMPLETE IN PLACE IN THE UNITS DESIGNATED. THE DEPARTMENT WILL MEASURE LINE QUANTITIES AS THE LENGTH OF THE COMPLETED MARKING, INCLUDING GAPS, INTERSECTIONS, AND OTHER SECTIONS OF PAVEMENT NOT NORMALLY MARKED.

THE DEPARTMENT WILL PAY FOR ACCEPTED QUANTITIES AT CONTRACT PRICES, OR PRICES ADJUSTED ACCORDING TO 641.11, MEASURED ACCORDING TO 641.12, WITH THE PROVISIONS SPECIFIED IN 641.13.

**ITEM 614 WORK ZONE PAVEMENT MARKINGS, SPRAY THERMOPLASTIC, AS PER PLAN**

THIS WORK CONSISTS OF FURNISHING AND APPLYING WET REFLECTIVE (WR) OPTICS (BEADS OR ELEMENTS), GLASS BEADS, AND SPRAY THERMOPLASTIC ACCORDING TO 640, 740, AND THE ADDITIONAL REQUIREMENTS SPECIFIED BELOW.

FURNISH MATERIALS CONFORMING TO:  
 GLASS BEADS ..... 740.09  
 SPRAY THERMOPLASTIC..... 740.10

FURNISH ONE OF THE FOLLOWING WET REFLECTIVE OPTICS: 3M CONNECTED ROADS ALL WEATHER ELEMENTS SERIES 50/51, POTTERS INDUSTRIES VISI-ULTRA, SWARCO DURALUX, OR APPROVED EQUAL.

IN ADDITION TO THE REQUIREMENTS OF 614.11, FURNISH EQUIPMENT CAPABLE OF APPLYING WR OPTICS AT THE TIME OF LINE PLACEMENT.

ENSURE THE PAVEMENT SURFACE IS FREE OF LOOSE MATERIAL AND COMPLETELY DRY PRIOR TO THE APPLICATION OF THE PAVEMENT MARKINGS.

PLACE SPRAY THERMOPLASTIC AT A THICKNESS OF 45 MILS (1.15 MM). DROP WET REFLECTIVE OPTICS FROM THE FORWARD-MOST BEAD APPLICATOR GUN AT A RATE OF 4 POUNDS PER 100 SQUARE FEET (1.9 KILOGRAM PER 10 M ) OF LINE. DROP GLASS BEADS AT THE RATE SPECIFIED IN 648.05 FOR SPRAY THERMOPLASTIC FROM THE REAR BEAD APPLICATOR GUN.

THE CONTRACTOR SHALL PLACE THE WORK ZONE PAVEMENT MARKINGS, SPRAY THERMOPLASTIC, AS PER PLAN PER ODOT SPECIFICATION 614.11 AND ODOT SPECIFICATION 648 WITH THE EXCEPTION ODOT SPECIFICATION 648.05 SHALL BE MODIFIED TO ALLOW PLACEMENT OF THE MATERIAL AT A TEMPERATURE OF NOT LESS THAN 35 DEGREES FAHRENHEIT.

THE DEPARTMENT WILL MEASURE PAVEMENT MARKINGS COMPLETE IN PLACE IN THE UNITS DESIGNATED. THE DEPARTMENT WILL MEASURE LINE QUANTITIES AS THE LENGTH OF THE COMPLETED MARKING, INCLUDING GAPS, INTERSECTIONS, AND OTHER SECTIONS OF PAVEMENT NOT NORMALLY MARKED.

THE DEPARTMENT WILL PAY FOR ACCEPTED QUANTITIES AT CONTRACT PRICES, OR PRICES ADJUSTED ACCORDING TO 641.11, MEASURED ACCORDING TO 641.12, WITH THE PROVISIONS SPECIFIED IN 641.13.

THE FOLLOWING ESTIMATED QUANTITIES HAVE BEEN CARRIED TO THE GENERAL SUMMARY FOR USE AT LOCATIONS AND AT TIMES AS DIRECTED BY THE ENGINEER FOR WORK ZONE PAVEMENT MARKINGS PER THE REQUIREMENTS OF C&MS 614.11.

ITEM 614 WORK ZONE LANE LINE, CLASS I SPRAY THERMOPLASTIC, AS PER PLAN 4.5 MILE  
 ITEM 614 WORK ZONE EDGE LINE, CLASS I SPRAY THERMOPLASTIC, AS PER PLAN 7.8 MILE  
 ITEM 614 WORK ZONE CHANNELIZING LINE, CLASS I, SPRAY THERMOPLASTIC, AS PER PLAN 19811 FEET  
 ITEM 614 WORK ZONE DOTTED LINE, CLASS I, SPRAY THERMOPLASTIC, AS PER PLAN 6106 FEET

**SPECIAL - WINDOW CONTRACT: WEEKEND CLOSURE**

THE CONTRACTOR HAS THE NUMBER OF HOURS DESIGNATED IN THE SPECIAL - WINDOW CONTRACT TABLE IN WHICH TO COMPLETE ALL ITEMS OF CRITICAL WORK AS DEFINED SPECIAL - WINDOW CONTRACT TABLE. THE SPECIAL - WINDOW CONTRACT TABLE IS LOCATED WITHIN THE MOT GENERAL NOTES. THE CONTRACTOR MUST COMPLETE THE CRITICAL WORK WITHIN THE TIMEFRAME DESIGNATED AND BY THE COMPLETION DATE LISTED IN THE PROPOSAL.

PER THE SPECIAL - WINDOW CONTRACT TABLE WITHIN THE MOT GENERAL NOTES, THE CONTRACTOR MAY IMPLEMENT A COMPLETE CLOSURE OF 71NB TO 270WB RAMP FROM 8PM FRIDAY THROUGH 5AM MONDAY AS ALLOWED IN MOT PHASE 2. THE CONTRACTOR MUST COMPLETE THE CRITICAL WORK WITHIN THE DESIGNATED DURATION.

COMPLETION OF THE CRITICAL WORK IS DEFINED AS HAVING THE DESIGNATED SECTION OF WORK OPEN TO UNRESTRICTED TRAFFIC; ALL TRAFFIC LANES BEING AVAILABLE FOR USE AT THEIR REQUIRED WIDTH WITH ALL REQUIRED MARKINGS AND SAFETY FEATURES INSTALLED.

IF THE WORK IS NOT COMPLETED WITHIN THE DURATION DESIGNATED IN THE SPECIAL: WINDOW CONTRACT TABLE WITHIN THE MOT GENERAL NOTES, THE CONTRACTOR WILL BE SUBJECT TO DISINCENTIVES AS IDENTIFIED.

PRIOR TO IMPLEMENTATION OF THE CLOSURE, THE CONTRACTOR AND PROJECT ENGINEER MUST MUTUALLY AGREE UPON THE ACCEPTABILITY OF THE WEATHER FORECAST FOR THE ANTICIPATED WORK DURATION. BOTH THE PROJECT ENGINEER AND CONTRACTOR WILL CONSIDER THE WEATHER FORECAST AND ANTICIPATED WORK PRIOR TO IMPLEMENTING THE CLOSURE. IF THE CONTRACTOR AND PROJECT ENGINEER DO NOT AGREE, THE CONTRACTOR MAY PROCEED AND IS ASSUMING THE RISKS AND DISINCENTIVES ASSOCIATED THE POTENTIAL WEATHER IMPACTS. THE CLOSURE MAY NEED TO BE RESCHEDULED MULTIPLE TIMES.

TIME EXTENSIONS FOR WEATHER IMPACTED WEATHER-SENSITIVE CRITICAL WORK WILL ONLY BE FOR THE DURATION OF THE ACTUAL UNANTICIPATED WEATHER EVENT AND FOR ANY SUBSEQUENT NECESSARY WEATHER-CAUSED REMEDIATION WORK. TIME EXTENSIONS WILL BE CALCULATED IN HOURS AND SHALL BE ON AN HOUR-FOR-HOUR BASIS. THE CONTRACTOR SHALL RESUME WORK IMMEDIATELY FOLLOWING THE CESSATION OF AN IMPACTING WEATHER EVENT. WEATHER DELAYS AND WEATHER REMEDIATION WORK IS NON-COMPENSABLE.

SPECIAL - WINDOW CONTRACT TABLE: WEEKEND CLOSURE

DESCRIPTION OF CRITICAL WORK	HOURS TO COMPLETE	DISINCENTIVE \$ PER HOUR
COMPLETE CLOSURE BETWEEN THE HOURS OF 8PM FRIDAY THROUGH 5AM MONDAY OF 71NB TO 270WB RAMP TO COMPLETE RAMP CONSTRUCTION.	57 HOURS	\$1000

CALCULATED  
BPT  
CHECKED  
EMW

MAINTENANCE OF TRAFFIC NOTES

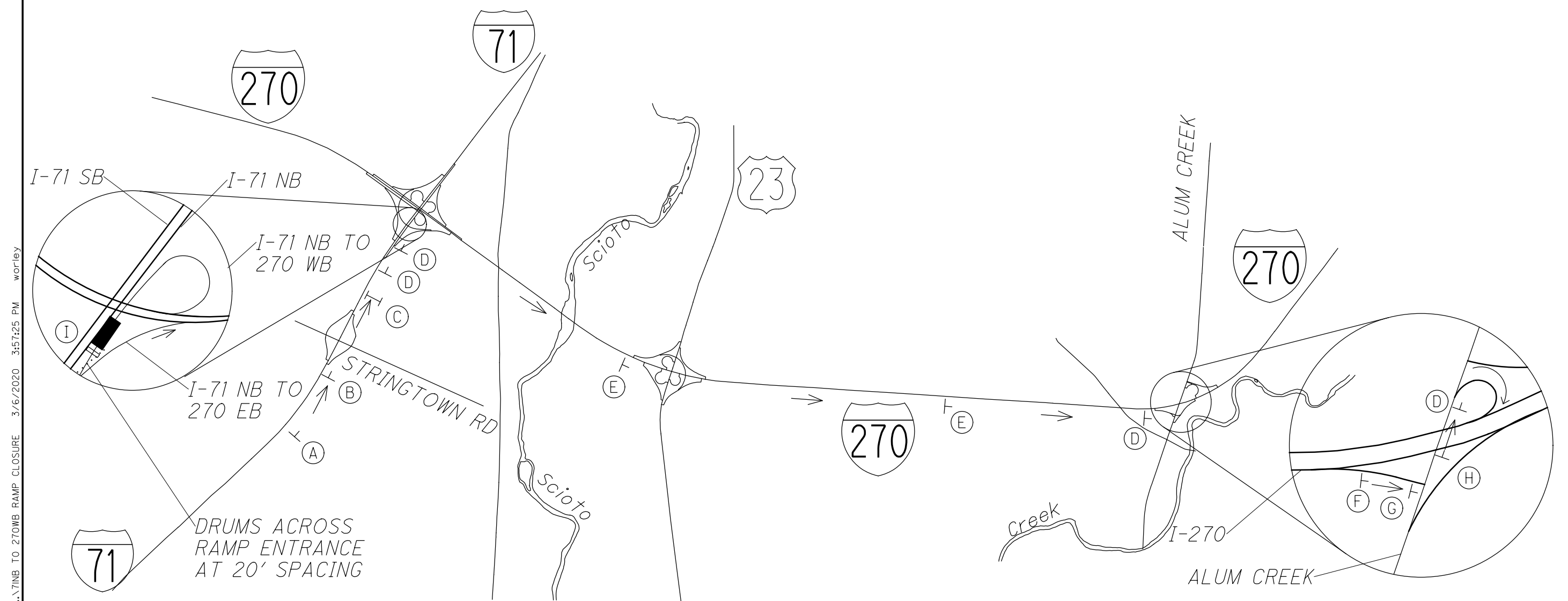
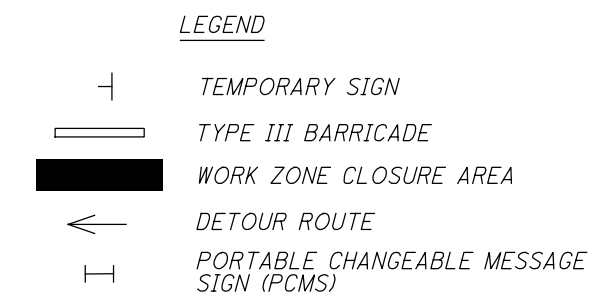
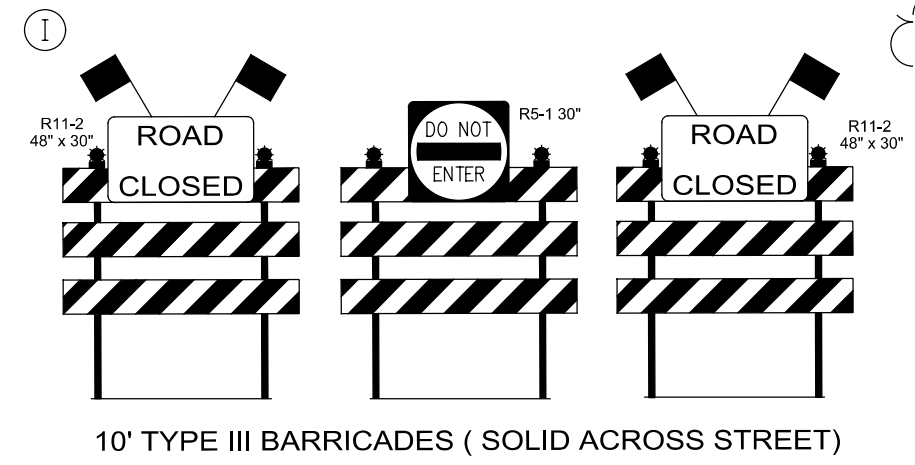
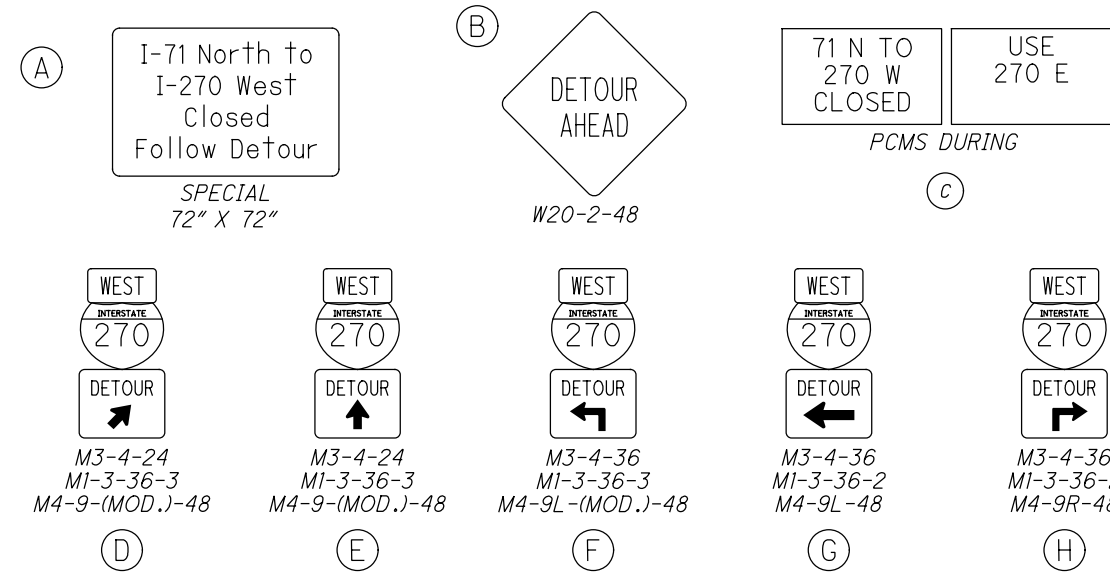
FRA - 71 - 8.87

26A  
264

- NOTES:**
1. THIS DETOUR SHALL BE IN PLACE FOR THE DURATION OF THE RAMP CLOSURE.
  2. CONTRACTOR SHALL CONTACT THE LOCAL MAINTAINING AGENCY TO MAKE ANY ADJUSTMENTS TO EXISTING SIGNAL TIMINGS FOR ALL SIGNALS ALONG THE DETOUR ROUTE.
  3. ALL SIGNS ON THIS SHEET SHALL BE BLACK LETTERING ON AN ORANGE BACKGROUND EXCEPT THE R5-1 SIGN.
  4. FOR RAMP CLOSURE DURATION DETAILS SEE SHEET 26A.

CALCULATED  
BPT  
CHECKED  
EMW

0 2000 4000  
HORIZONTAL SCALE IN FEET



\71NB TO 270WB RAMP CLOSURE 3/6/2020 3:57:25 PM worley

MAINTENANCE OF TRAFFIC DETOUR PLAN  
 71NB TO 270WB RAMP CLOSURE

FRA-71-9.07