

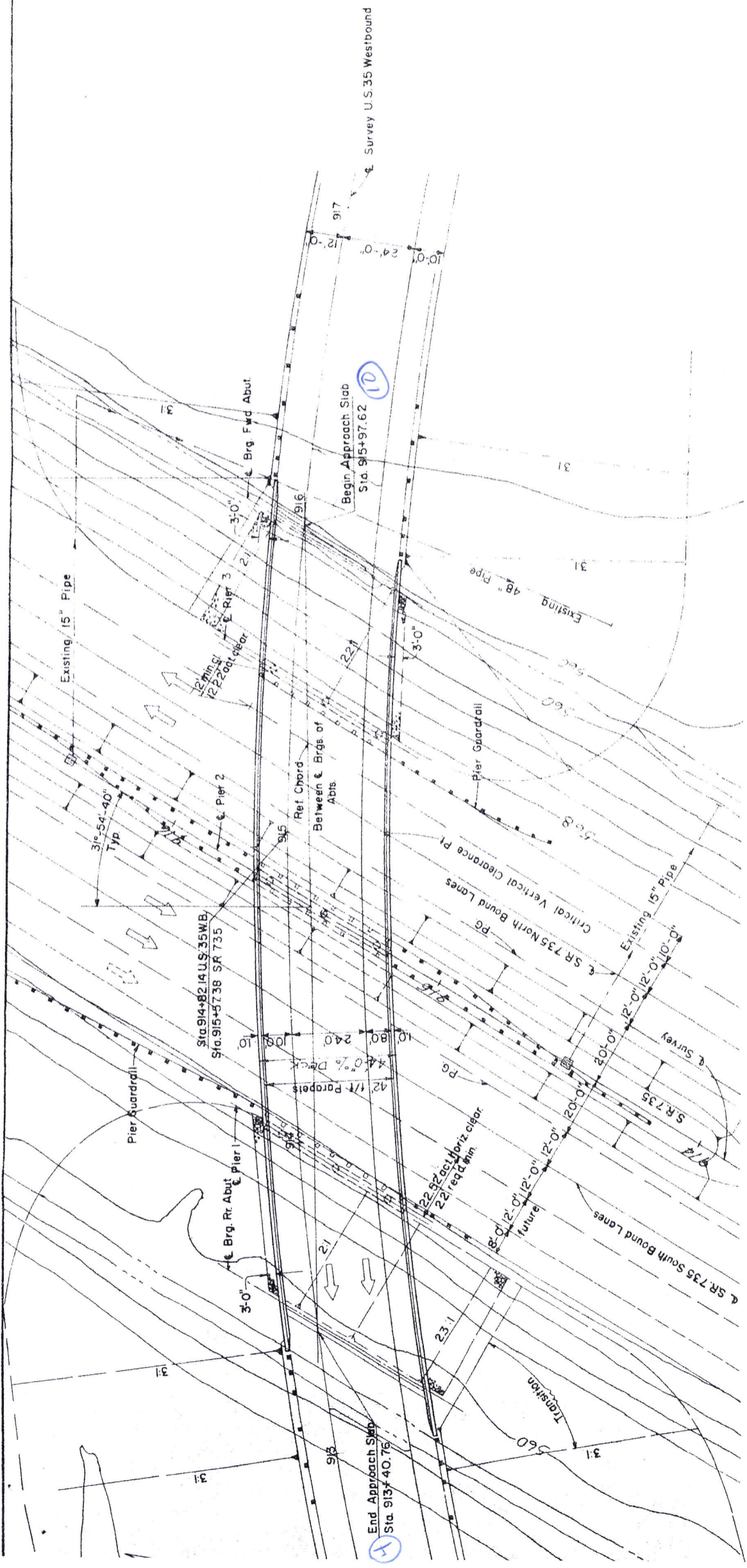
**GALLIA COUNTY  
GAL. - 35-1675**

**12" C.I.P. REINF. CONCRETE PILES**  
ESTIMATED AVERAGE PILE LENGTH OF PILES

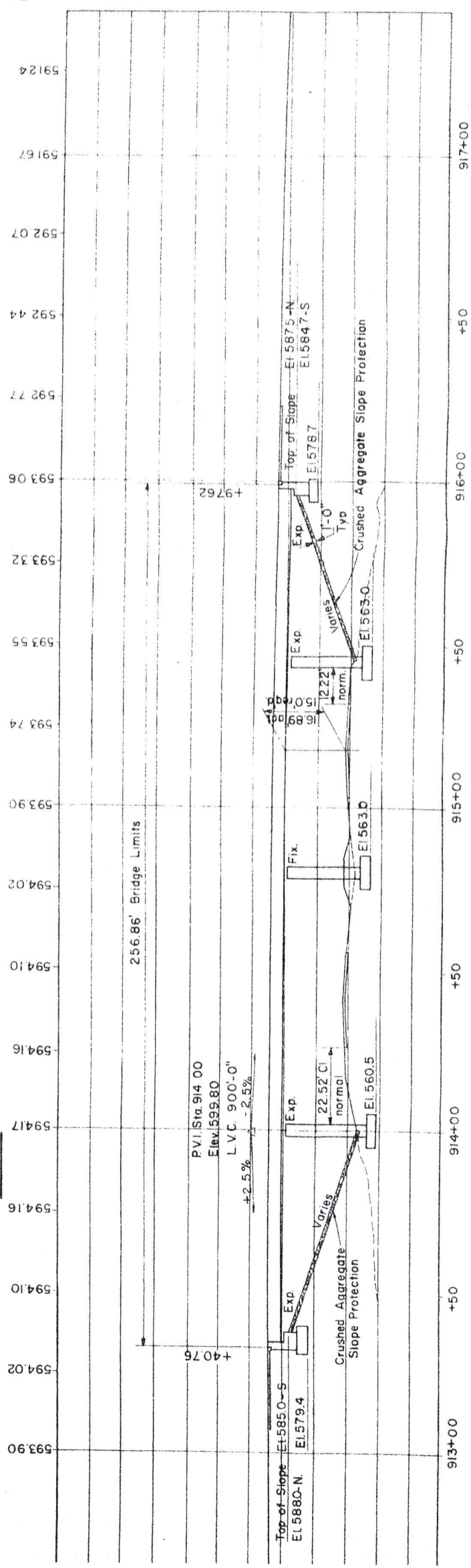
Rear Abut.	50'
Pier 1	30'
Pier 2	30'
Pier 3	40'
Fwd. Abut.	55'

**NOTE**

EARTHWORK LIMITS SHOWN ARE SCHEMATIC ONLY.  
ACTUAL SLOPES SHALL CONFORM TO PLAN CROSS-SECTIONS



**PLAN**



**PROFILE ALONG C OF SURVEY**

**HORIZONTAL CURVE DATA**

U.S.R. 35 CURVE#2  
 TS = Sta. 901+40.37  
 SC = Sta. 905+40.37  
 CS = Sta. 921+36.96  
 ST = Sta. 925+36.96  
 PI = Sta. 916+87.88  
 Δ = 97°-49'-58"  
 Ls = 400'  
 Gs = 9°-48'  
 T<sub>k</sub> = 1547.51  
 D<sub>c</sub> = 4°-54'  
 R<sub>c</sub> = 1169.30  
 L<sub>c</sub> = 1596.59

**PROPOSED STRUCTURE**

TYPE: 4 Span Continuous Steel Beam with Concrete Slab & Substructure  
 SPANS: 57'-0", 81'-6", 66'-6" & 46'-6"  
 ROADWAY: 42'-0" f/f Parapets  
 LOADING: HS-20-44  
 SKEW: 31°-54'-40" Lfwd from Ref Chord  
 WEARING SURFACE: 1" Monolithic Concrete  
 APPROACH SLAB: AS-1-67(25'Long)  
 ALIGNMENT: 4°-54' Curve Rt.  
 SUPERELEVATION: 0.083 1/1 Rt

E. S. PRUSTON & ASSOCIATES, LIMITED  
 ENGINEERS  
 COLUMBUS, OHIO

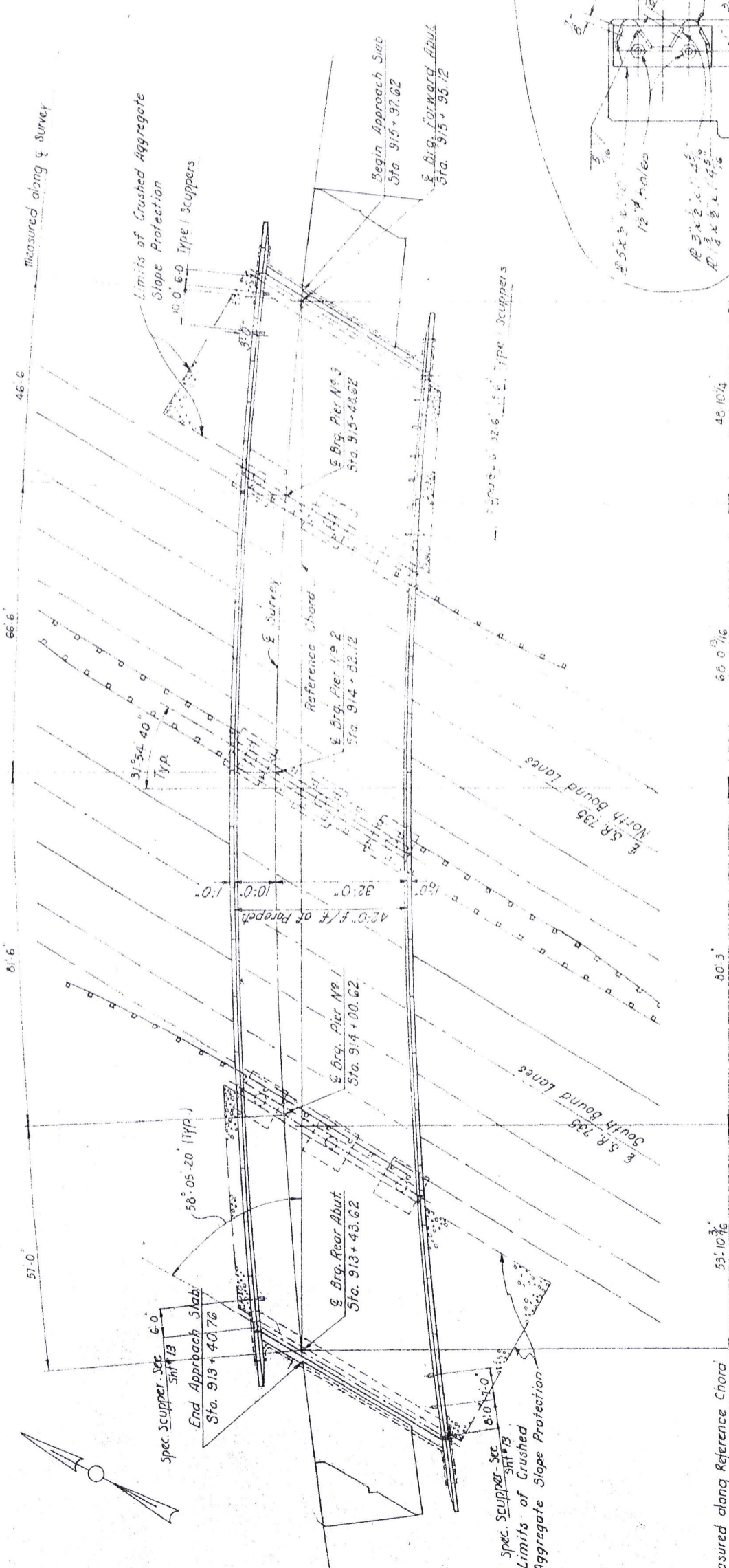
**SITE PLAN**

BRIDGE NO. GAL. - 35-1731  
 U.S.R. 35 WESTBOUND OVER S.R. 735  
 GALLIA COUNTY  
 STA. 913+40.76  
 STA. 916+97.62

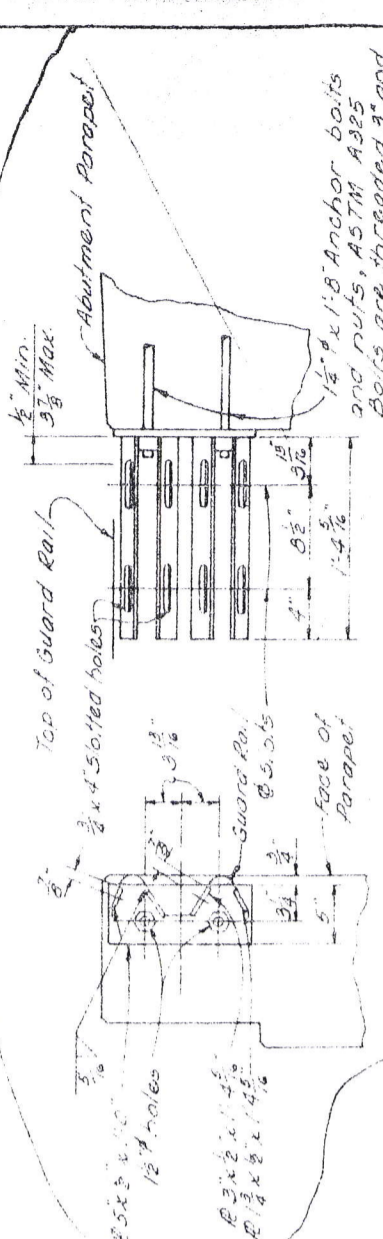


FED. RD. DIVISION	STATE	PROJECT
2	OHIO	

GALLIA COUNTY  
GAL-35-1675



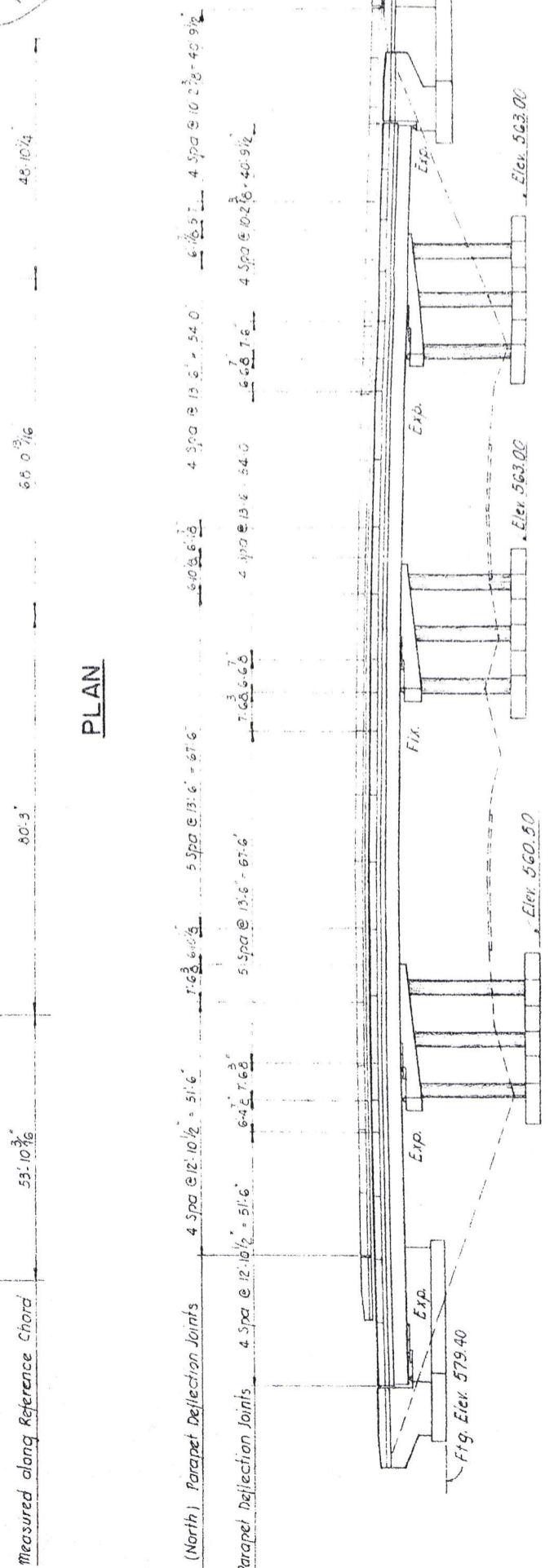
**GUARDRAIL-BRIDGE CONNECTOR**



The connector bracket shall be galvanized after welding and shall be included with guardrail for payment.

VOID — See Detail on Sheet 92

**PLAN**



**ELEVATION**

**NOTE:**

PILES NOT SHOWN FOR LAYOUT SEE RESPECTIVE PLAN SHEETS

E. S. PRESTON & ASSOCIATES LIMITED, 2/75 ENGINEERS COLUMBUS, OHIO	
<b>GENERAL PLAN</b>	
BRIDGE NO. GAL-35-1731 U.S.R. 35 WESTBOUND OVER S.R. 735	
GALLIA COUNTY STA. 913+40.76 STA. 915+97.62	
DESIGNED BY: <i>J. K. G.W.</i>	CHECKED BY: <i>H.W.R.</i>
DATE: <i>2/75</i>	APPROVED DATE: <i>2/75</i>



STATE	PROJECT
OHIO	

GALLIA COUNTY  
GAL.-35-1675

# GENERAL NOTES

REFERENCE shall be made to Standard Drawings AS-1-67 revised 1-11-68, RB-1-55 revised 2-2-59, SD-1-65 sheets 1 thru 3, dated 11-8-65, and to Supplemental Specifications 808 dated 1-13-67, 811 and 828 both dated 1-1-67, 832 and 931 both dated 5-25-67 and 825 dated 12-19-67.

DESIGN SPECIFICATIONS: This structure conforms to "Standard Specifications for Highway Bridges" adopted by the American Association of State Highway Officials, 1965, including the Ohio "Supplement" to these specifications.

**DESIGN DATA:**

- Design Loading - HS 20-44
- Concrete Class C - Unit stress 1200 p.s.i. for superstructure  
Unit stress 1333 p.s.i. for substructure
- Structural Steel - ASTM A36 - unit stress 20,000 p.s.i.
- Reinforcing Steel - ASTM A15, A16, A160, deformed, intermediate or hard grade. Unit stress 20,000 p.s.i. Except that spiral reinforcement may be plain bars.  
Structural Grade with minimum ultimate strength of 58,000 p.s.i.

PROCEDURE: The embankments shall be constructed to the level of the subgrade for a minimum distance of 200 feet back of the abutments. Excavation shall then be made for the abutments and Piers No 1 and 3.

PILES shall be driven to a minimum bearing capacity of 30 tons per pile for the abutments and 40 tons per pile for the piers.

MACHINE FINISH: The concrete deck may be finished by the use of a finishing machine at the option of the contractor.

PAINTING of structural steel shall be according to Supplemental Specifications 832.

WELDS on secondary stress carrying members are shown thus  $\curvearrowright$

WELDED ATTACHMENTS: No attachments shall be made by field welding to the top flanges or flange plates of continuous beams within a distance of 0.10 of the span length on either side of the interior supports. Welding for attachments to the top flange at other parts of the spans shall be kept at least 2' from edge of flanges.

EXCAVATION QUANTITY includes the removal of fill material required for construction of the abutments and piers.

MAINTENANCE OF TRAFFIC: Two lanes of traffic with a minimum horizontal width of 26'-0" and a minimum vertical clearance of 12'-9" shall be maintained on SR 735 at all times.

## ESTIMATED QUANTITIES

ITEM	TOTAL	UNIT	DESCRIPTION	SUPER.	ABUTS.	PIERS	GEN.
503	789	CU. YDS.	UNCLASSIFIED EXCAVATION		554	235	
505	LUMP	SUM	FIRST TEST PILE				LUMP
507	4,140	LIN. FT.	12" CAST-IN-PLACE REINFORCED CONCRETE PILES		2,360	1,780	
509	154,552	LBS.	REINFORCING STEEL	110,330	14,254	29,968	
511	343	CU. YDS.	CLASS "C" CONCRETE - SUPERSTRUCTURE	343			
511	107	CU. YDS.	CLASS "C" CONCRETE - PIERS ABOVE FOOTINGS			107	
511	74	CU. YDS.	CLASS "C" CONCRETE - PIER FOOTINGS			74	
511	221	CU. YDS.	CLASS "C" CONCRETE - ABUTMENTS		221		
512	20	LIN. FT.	PREMOLDED SEALING STRIP		20		
513	306,750	LBS.	STRUCTURAL STEEL	306,750			
832	306,750	LBS.	FIELD PAINTING OF STRUCTURAL STEEL	306,750			
518	57	CU. YDS.	POROUS BACKFILL		57		
518	85	LIN. FT.	6" PERFORATED, HELICAL C.M.P. INCL. SPECIALS, 707.06		85		
518	73	LIN. FT.	6" NON-PERFORATED HELICAL C.M.P., 707.06		73		
518	3	EACH	SCUPPERS, INCLUDING SUPPORTS (SPECIAL)	3			
518	8	EACH	SCUPPERS, INCLUDING SUPPORTS, STD. TYPE I	8			
601	701	SQ. YDS.	CRUSHED AGGREGATE SLOPE PROTECTION				701
808	343	UNITS	WATER-REDUCING, SET-RETARDING ADMIXTURE				
825	1,412	SQ. YDS.	CONCRETE SURFACE TREATMENT	1,391	21		
828	97	LIN. FT.	JOINT SEALER		97		

E. S. PREETON & ASSOCIATES, LIMITED  
ENGINEERS  
COLUMBUS, OHIO

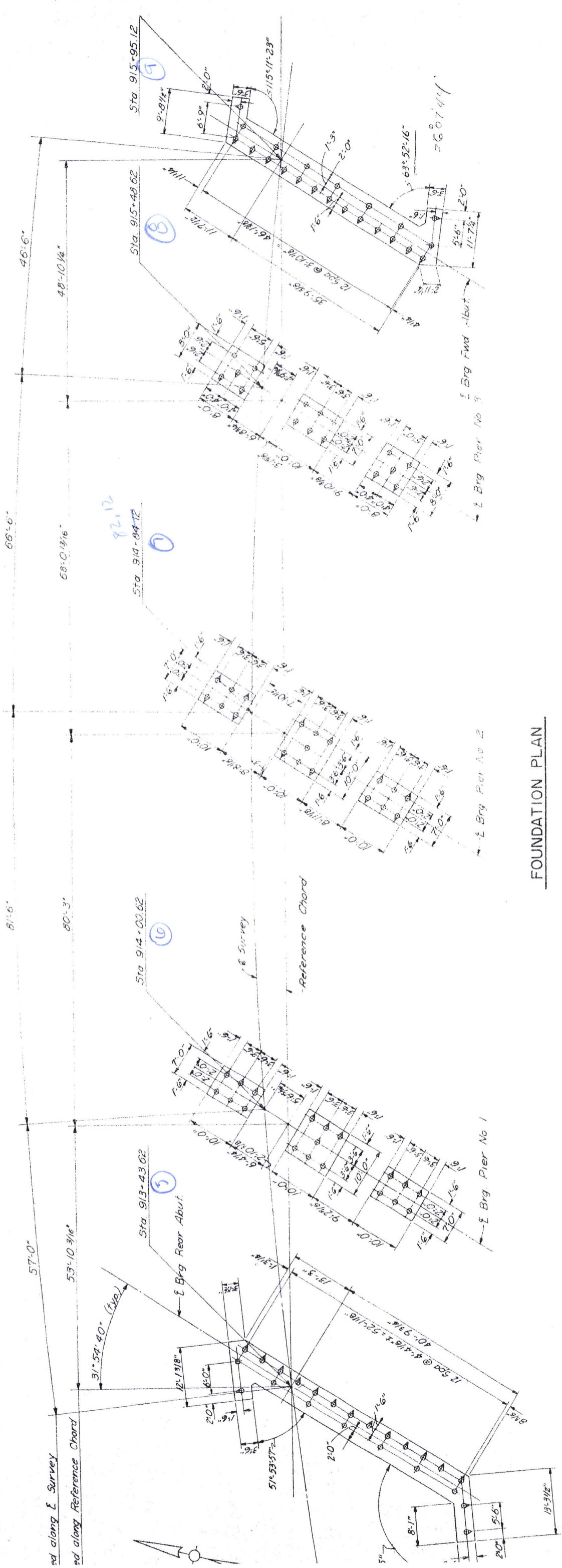
GENERAL NOTES & QUANTITIES  
BRIDGE NO. GAL - 35-1731  
U.S.R. 35 WESTBOUND OVER S.R. 735  
GALLIA COUNTY  
STA. 913+40.76  
STA. 915+97.62

DESIGNED: P.R.R.  
DRAWN: G.D.  
CHECKED: M.M.V.  
REVIEWED DATE: 11-1-67



SECTION	STATE	PROJECT
2	OHIO	

GALLIA COUNTY  
GAL. - 35-1675

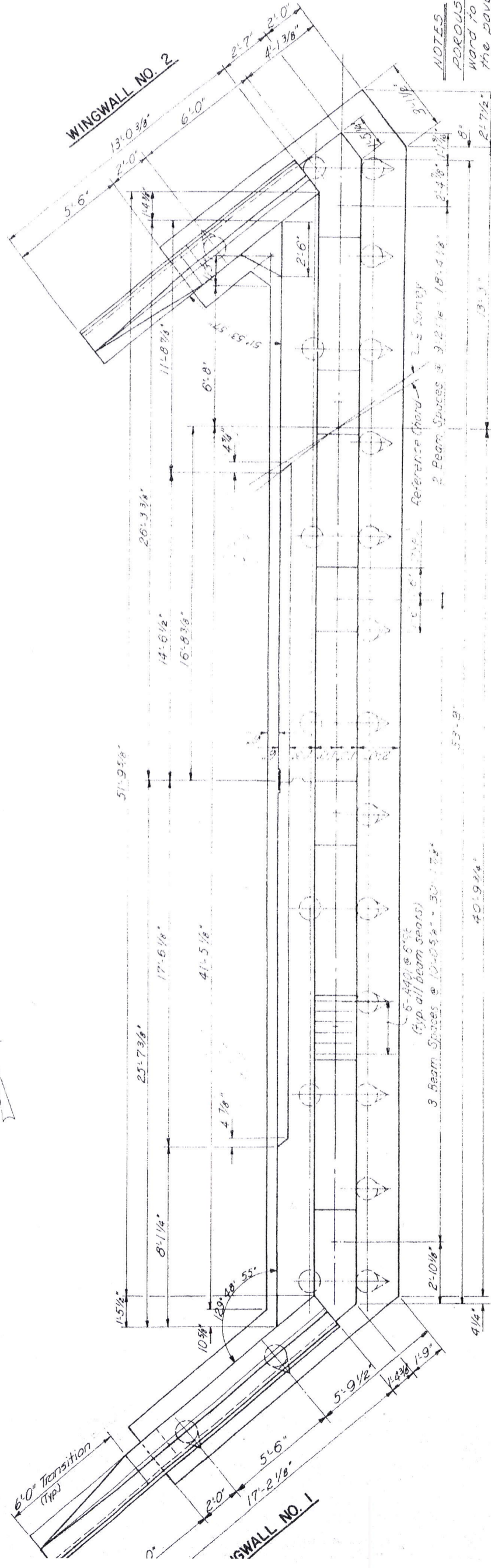


FOUNDATION PLAN

E. S. PRESTON & ASSOCIATES, LIMITED		4 / 5
ENGINEERS		
COLUMBUS, OHIO		
<b>FOUNDATION PLAN</b>		
BRIDGE NO. GAL.-35-1731		
USR 35 WESTBOUND OVER SR.735		
GALLIA COUNTY		STA 913+40.76
		STA 915+97.62
DRAWN	CHECKED	REVISION DATE
AJM	HWA	



GALLIA COUNTY  
GAL. - 35 - 1675



**NOTES**

POROUS BACKFILL shall extend upward to the approach slab and to the paved shoulders and outward to the wingwalls. Excavation therefor in excess of that required for construction of the abutments shall be considered as paid for in the bid price per cu yd. paid for porous backfill.

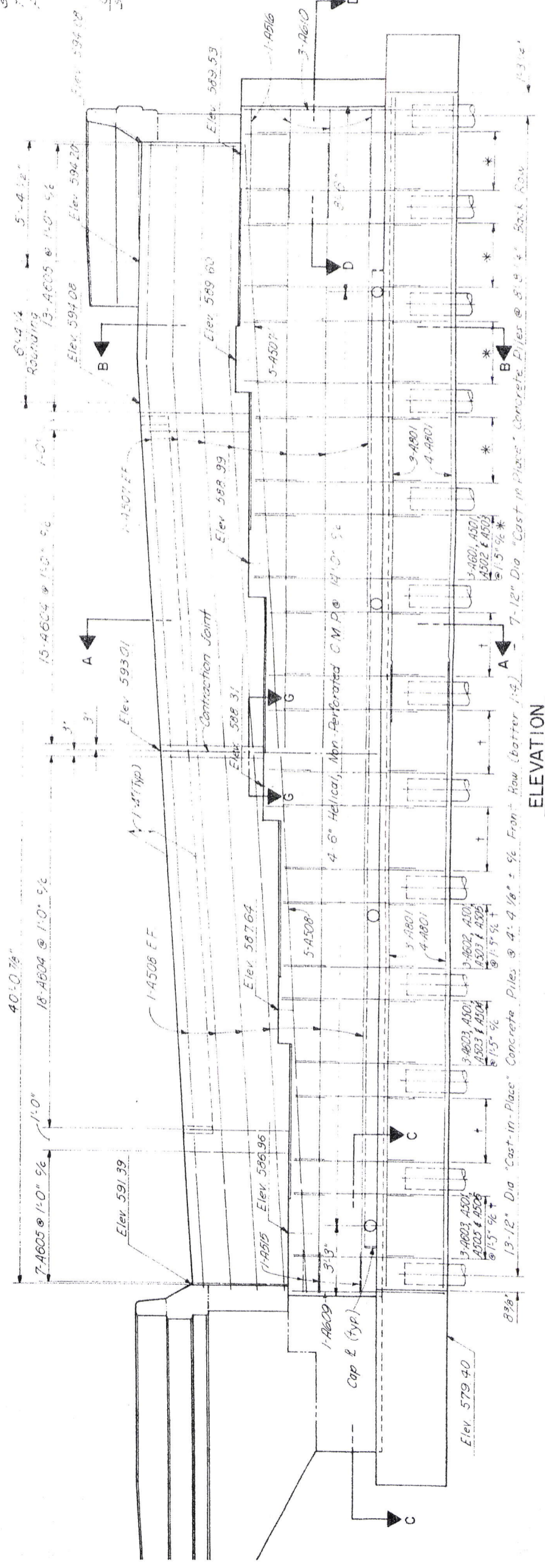
For additional details see sheets

GENERAL NOTES: For General Notes see sheet No. 3.

**LEGEND**

- N.F. = NEAR FACE
- E.F. = EACH FACE
- F.F. = FAR FACE
- ⊙ BATTER PILES 1/4" (AND DIRECTION OF BATTER)

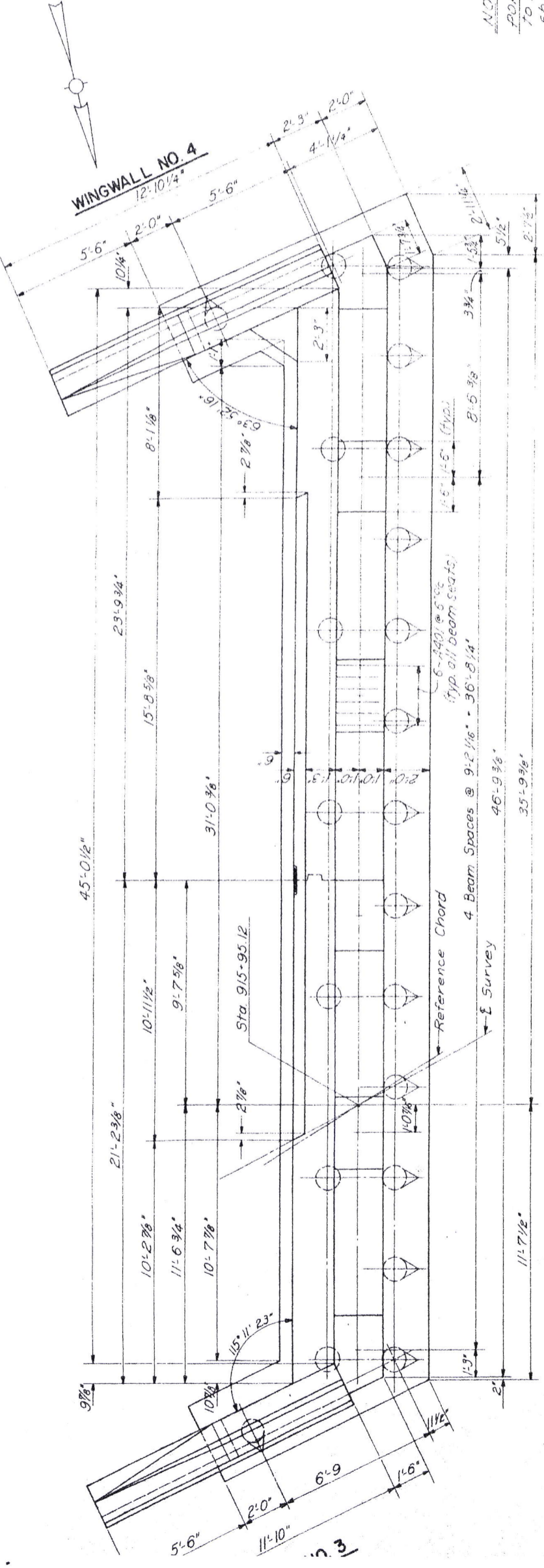
**ELEVATION**





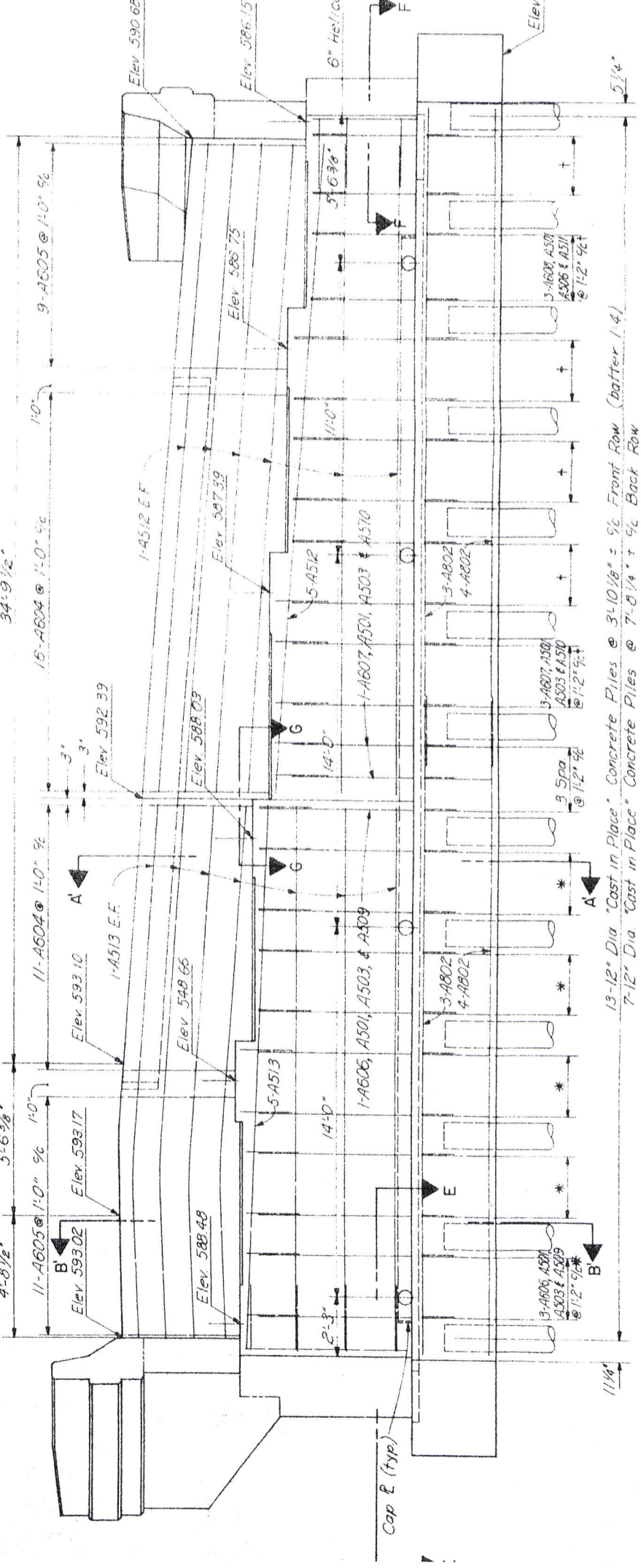
E.D. NO.	STATE	PROJECT
2	OHIO	

GALLIA COUNTY  
GAL. - 35 - 1675



PLAN

NOTES  
 POROUS BACKFILL shall extend upward to the approach slab and to the paved shoulders and outward to the wing-nails. Excavation therefore in excess of that required for construction of the abutments shall be considered as paid for in the bid price per cu yd. paid for porous backfill.  
 For additional details see sheets 7 & 8  
GENERAL NOTES: for General Notes see sheet No. 3



ELEVATION

LEGEND

- NF = NEAR FACE
- EF = EACH FACE
- FF = FAR FACE
- = BATTER PILES 14 (AND DIRECTION OF BATTER)

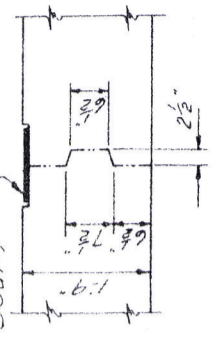
E. S. PRESTON & ASSOCIATES LIMITED ENGINEERS COLUMBUS, OHIO			6/15
<b>FORWARD ABUTMENT DETAILS</b>			
BRIDGE NO. GAL. - 35 - 1731			
U.S.R. 35 WESTBOUND OVER SR. 735			
GALLIA COUNTY	STA. 913+40.76	STA. 915+97.62	
DESIGNED BY AJM	CHECKED BY E.S.	DATE HWR	REVISION



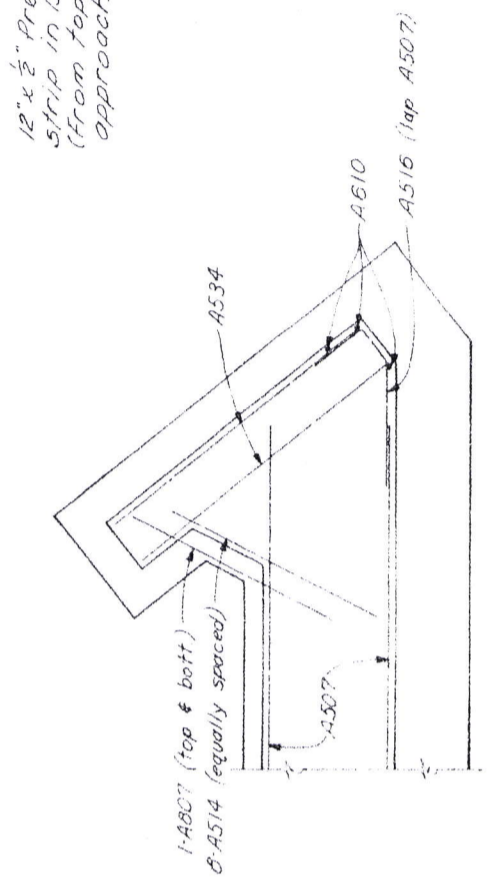
FED. RD. DIVISION	STATE	PROJECT
2	OHIO	

GALLIA COUNTY  
GAL. - 35-1675

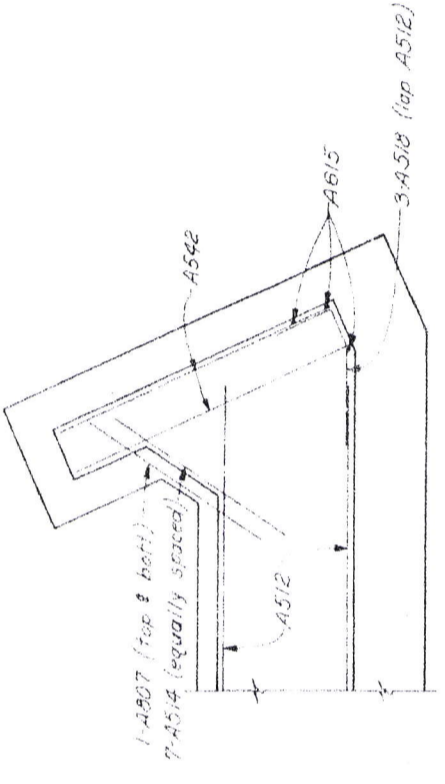
12" x ½" Premolded sealing strip in 13" x ½" recess. (from top of footing to approach slab seat.)



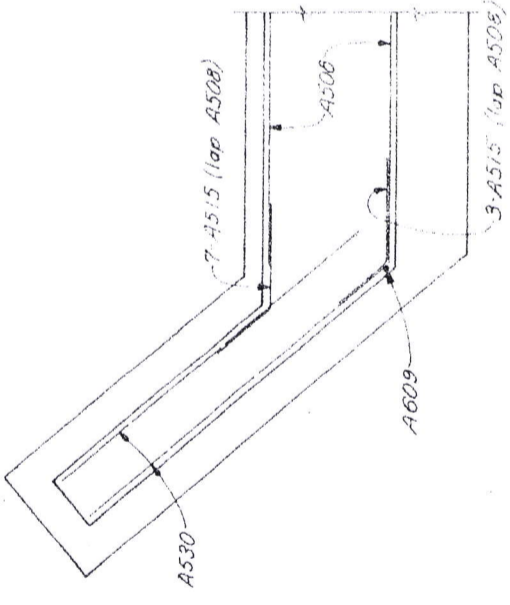
SECTION G-G



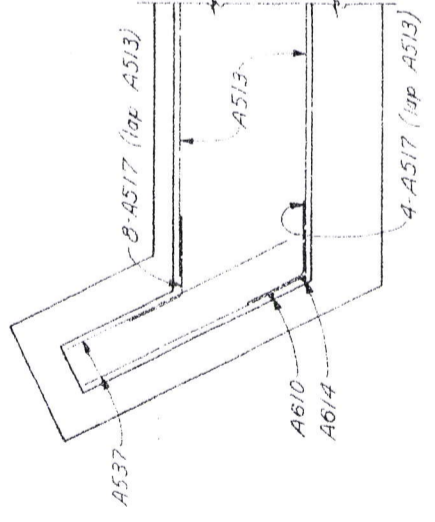
SECTION D-D



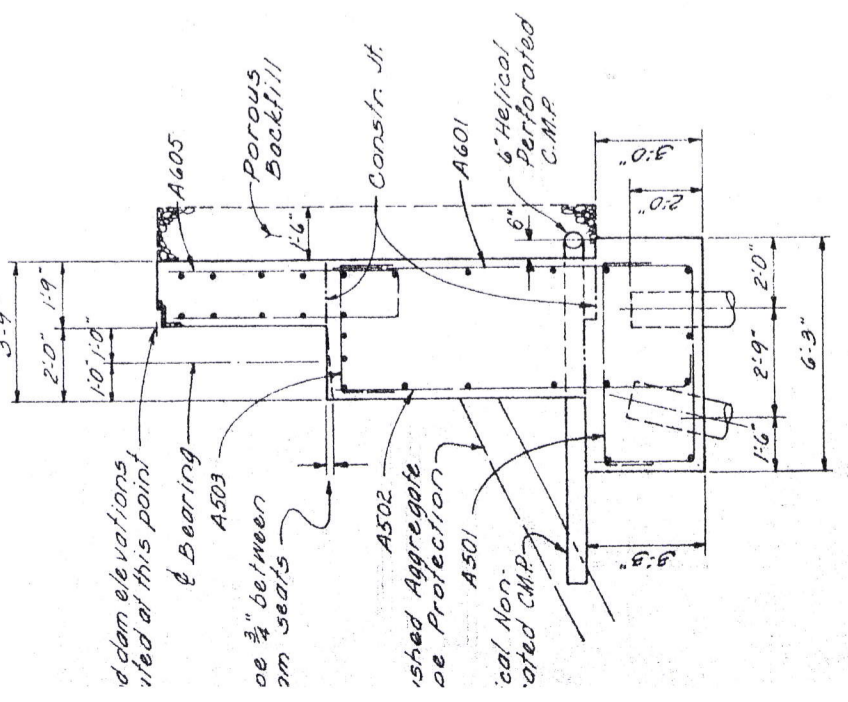
SECTION F-F



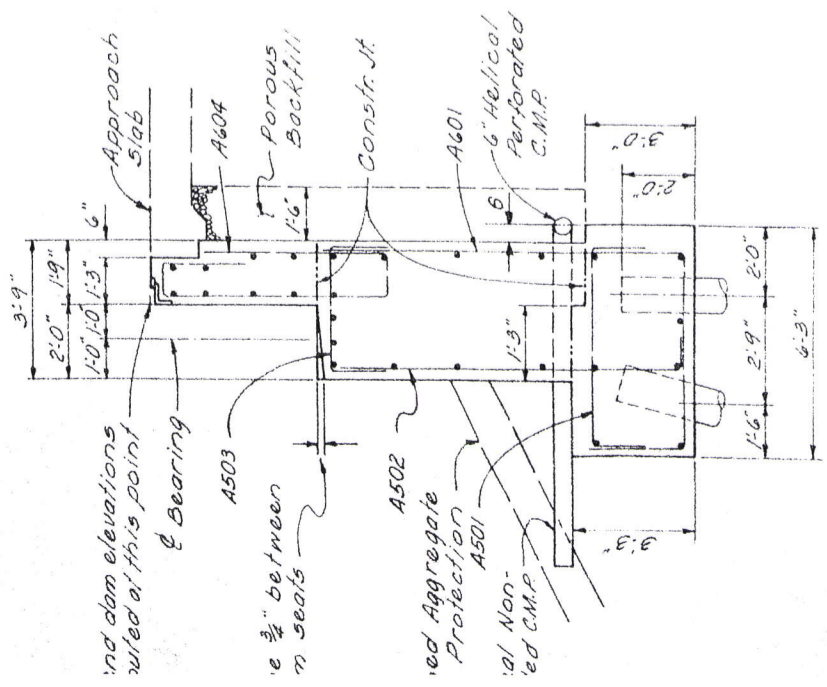
SECTION C-C



SECTION E-E



SECTION A-A (AS SHOWN)  
SECTION A-A (SIMILAR)



SECTION B-B (AS SHOWN)  
SECTION B-B (SIMILAR)

E. S. PRESTON & ASSOCIATES, LIMITED  
ENGINEERS  
COLUMBUS, OHIO

7/15

ABUTMENT DETAILS  
BRIDGE NO. GAL. - 35-1731  
USR. 35 WESTBOUND OVER S.R. 735

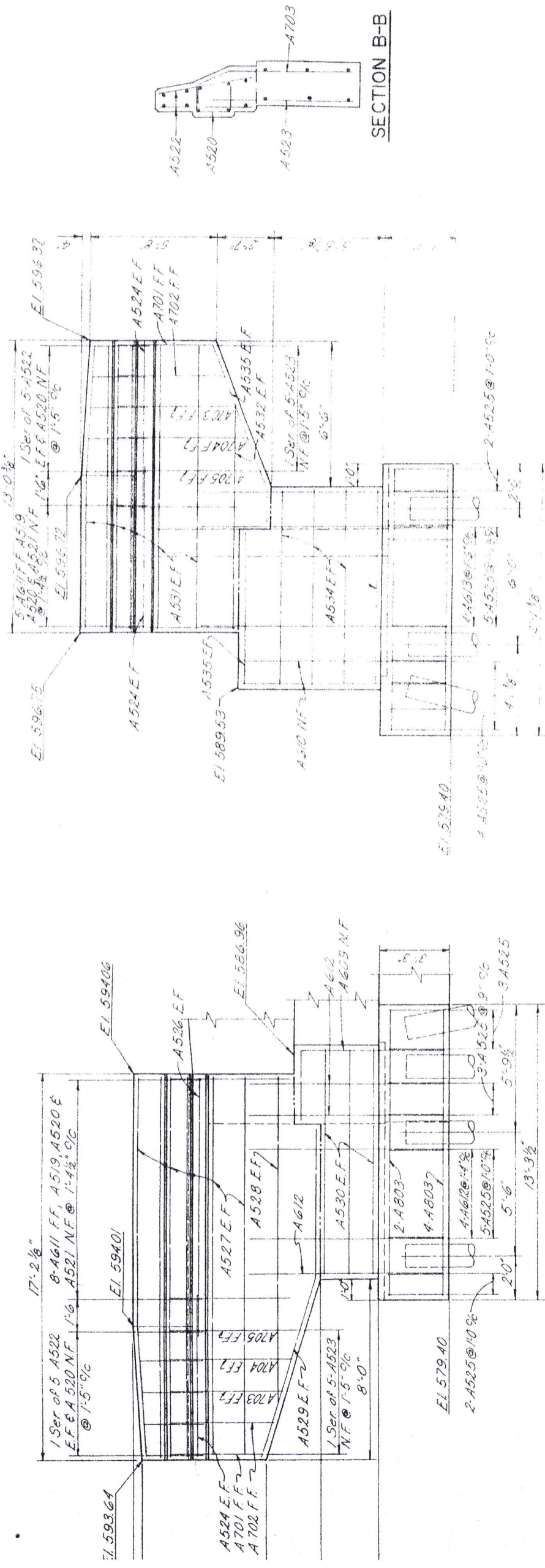
GALLIA COUNTY  
STA. 913.4076  
STA. 915.9762

DESIGNED BY: H.W.R.  
CHECKED BY: H.W.R.  
DATE: 7/15



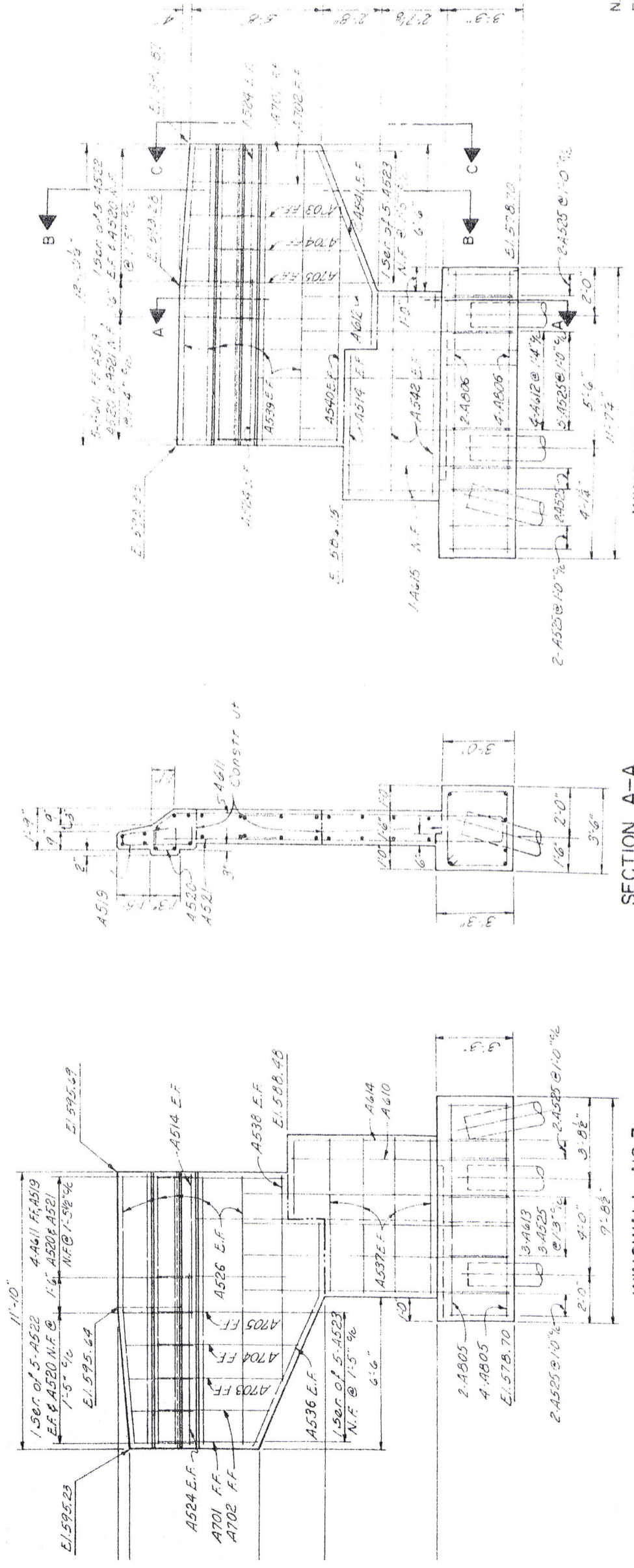
FED. NO. DIVISION	STATE	PROJECT
2	OHIO	

GALLIA COUNTY  
GAL. - 35-1675



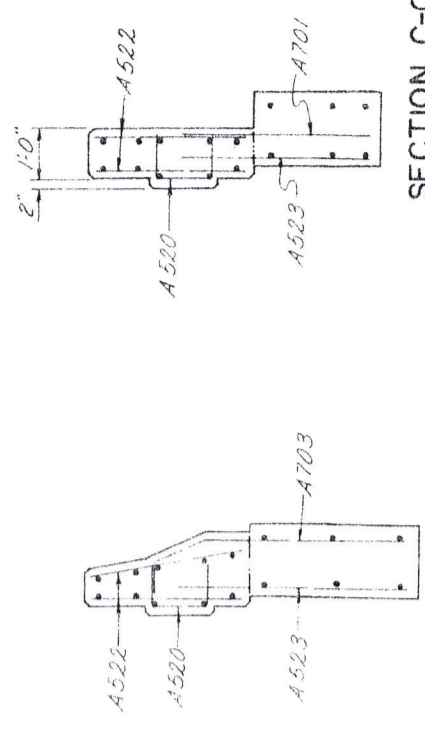
WINGWALL NO. 1

WINGWALL NO. 2

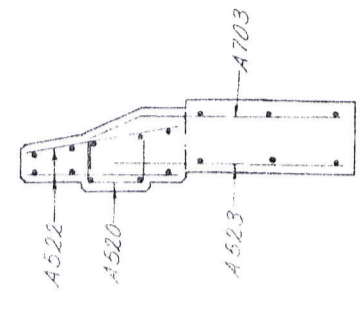


SECTION A-A

WINGWALL NO. 4



SECTION C-C



SECTION B-B

E. S. PRESTON & ASSOCIATES, LIMITED  
ENGINEERS  
COLUMBUS, OHIO

WINGWALL DETAILS  
BRIDGE NO. GAL - 35-1731  
USR. 35 WESTBOUND OVER S.R. 735  
GALLIA COUNTY  
STA. 913 +0.76  
STA. 915 +9.62

DATE	BY	REVISION
4/21/55	B.S.	H.W.P.

LEGEND

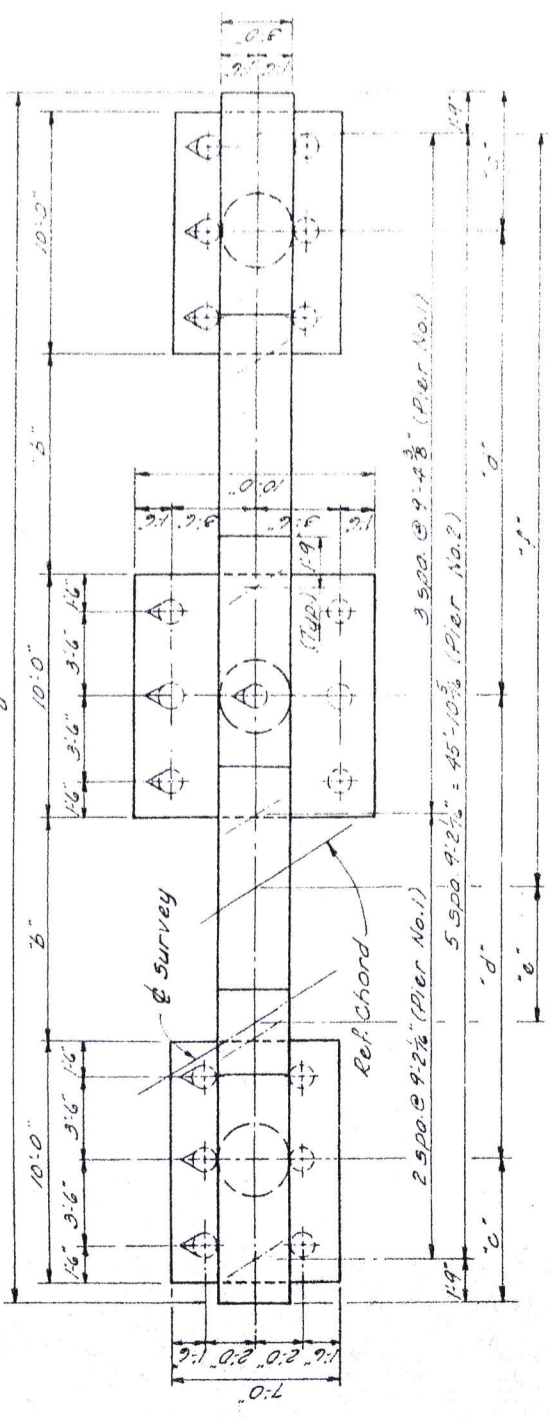
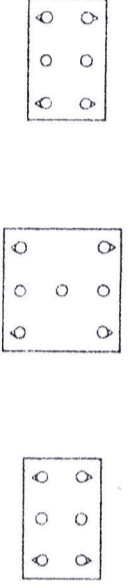
- N.F. = NEAR FACE
- E.F. = EACH FACE
- FF. = FAR FACE



FED. RD. DIVISION	STATE	PROJECT
2	OHIO	

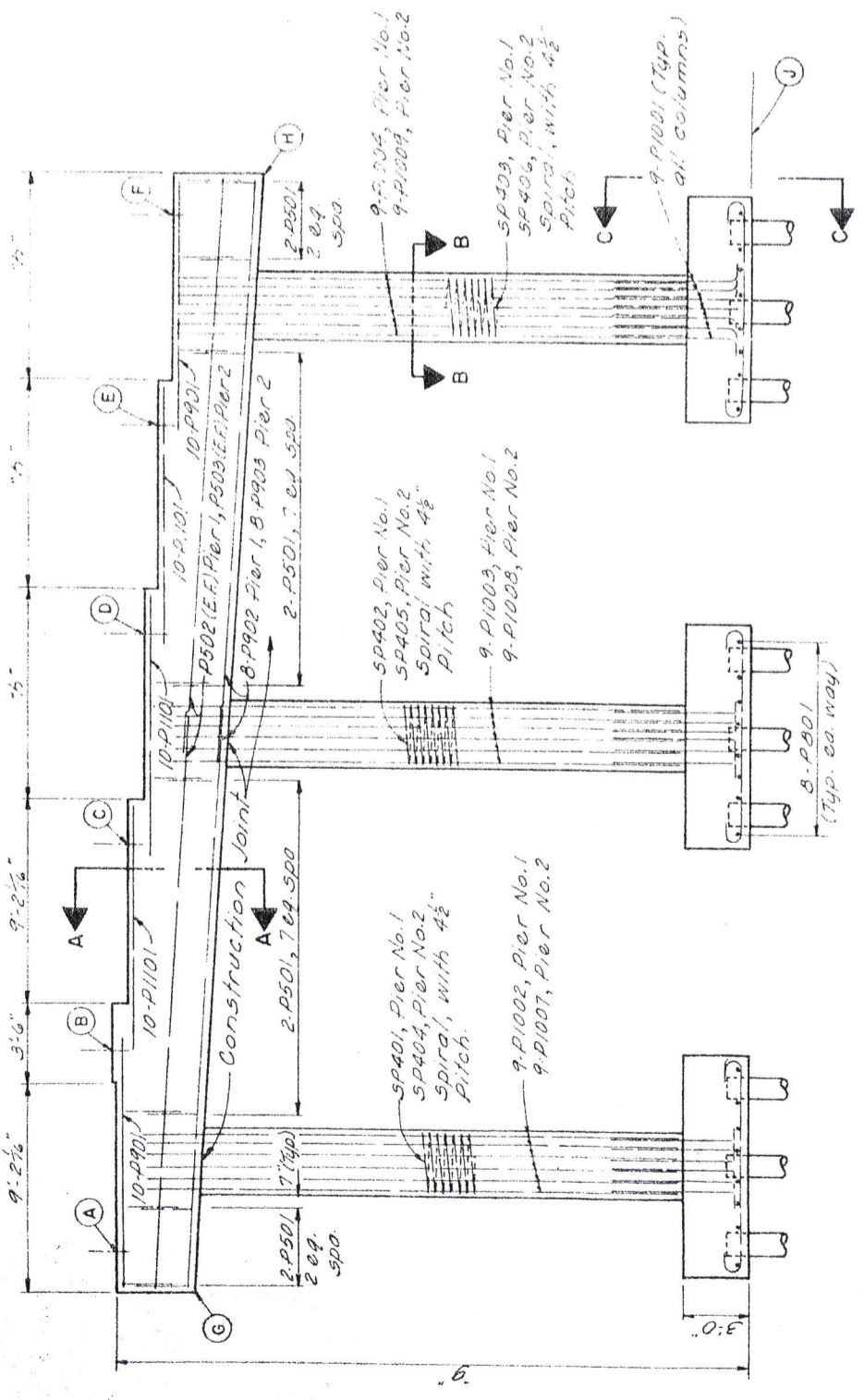
GALLIA COUNTY  
GAL.-35-1675

BATTERED PILES IN PIER NO. 2

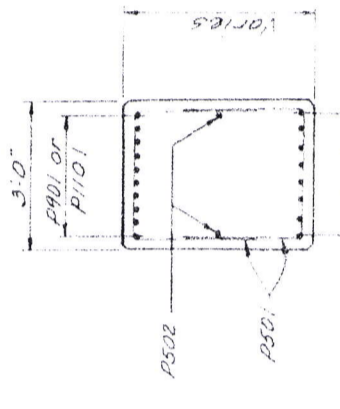


**PLAN**

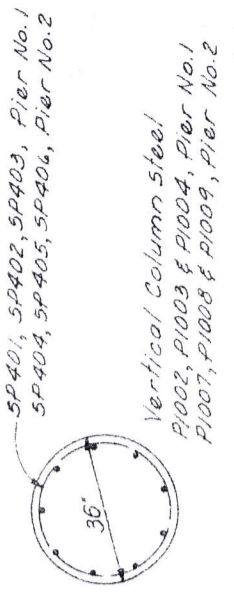
NOTE:  
Battered piles as shown are for Pier No. 1 only. For battered piles in Pier No. 2 see sketch at right.



ELEVATION



SECTION A-A



SP401, SP402, SP403, Pier No. 1  
SP404, SP405, SP406, Pier No. 2

Vertical Column Steel  
P1002, P1003 & P1004, Pier No. 1  
P1007, P1008 & P1009, Pier No. 2

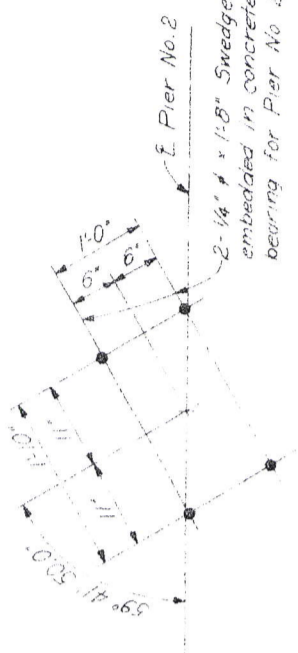
SECTION B-B

**DIMENSION TABLE**

Location	A	B	C	D	E	F	G	H	J
Pier No. 1	49'-3"	9'-2 1/2"	5'-9"	19'-2 1/2"	5'-6 1/2"	31'-1 1/2"	28'-6"	9'-4 1/2"	7"
Pier No. 2	49'-2 1/2"	8'-11 1/2"	5'-9"	18'-11 1/2"	7'-10 1/2"	28'-2"	25'-9 1/2"	9'-2 1/2"	7"

**ELEVATION TABLE**

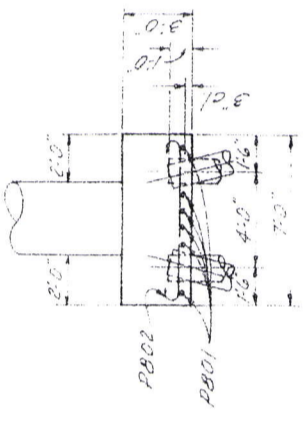
Location	A	B	C	D	E	F	G	H	J
Pier No. 1	589.30	589.05	588.44	587.82	587.19	586.58	585.50	582.52	560.50
Pier No. 2	588.77	588.51	588.25	587.62	586.99	586.36	585.27	582.31	563.00



ANCHOR BOLT DETAIL

(Typical Pier No. 2 only)

NOTE:  
BRIDGE SEAT REINFORCING: Special care shall be taken in placing steel in the vicinity of the bridge seat so as to avoid interference with the drilling of anchor bolt holes.



VIEW C-C

LEGEND

- = BATTER PILES 1:4 (AND DIR. OF BATTER)
- N.F. = NEAR FACE
- E.F. = EACH FACE
- F.F. = FAR FACE

PIER DETAILS (NO. 1 & 2)

BRIDGE NO. GAL.-35-1731  
U.S.R. 35 WESTBOUND OVER S.R. 735  
GALLIA COUNTY  
STA. 913+40.76  
STA. 915+97.62

E. S. PRESTON & ASSOCIATES, LIMITED  
ENGINEERS  
COLUMBUS, OHIO

DATE: 7/15  
CHECKED: J.M.  
REVISIONS: 1



REG. NO. DIVISION	STATE	PROJECT
2	OHIO	

GALLIA COUNTY  
GAL. - 35 - 1675

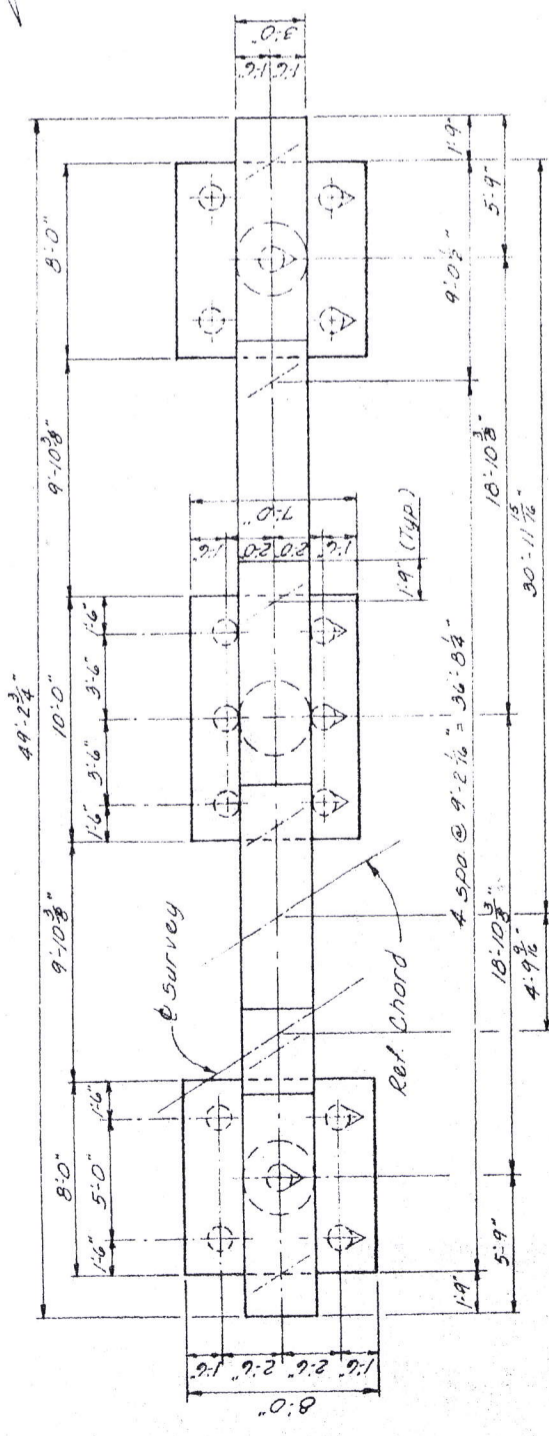
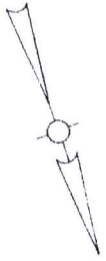
E. S. PRESTON & ASSOCIATES, LIMITED  
ENGINEERS  
COLUMBUS, OHIO

**PIER DETAILS (NO. 3)**  
BRIDGE NO. GAL. - 35 - 1731  
U.S.R. 35 WESTBOUND OVER SR. 735  
GALLIA COUNTY  
STA. 913+40.76  
STA. 915+97.62

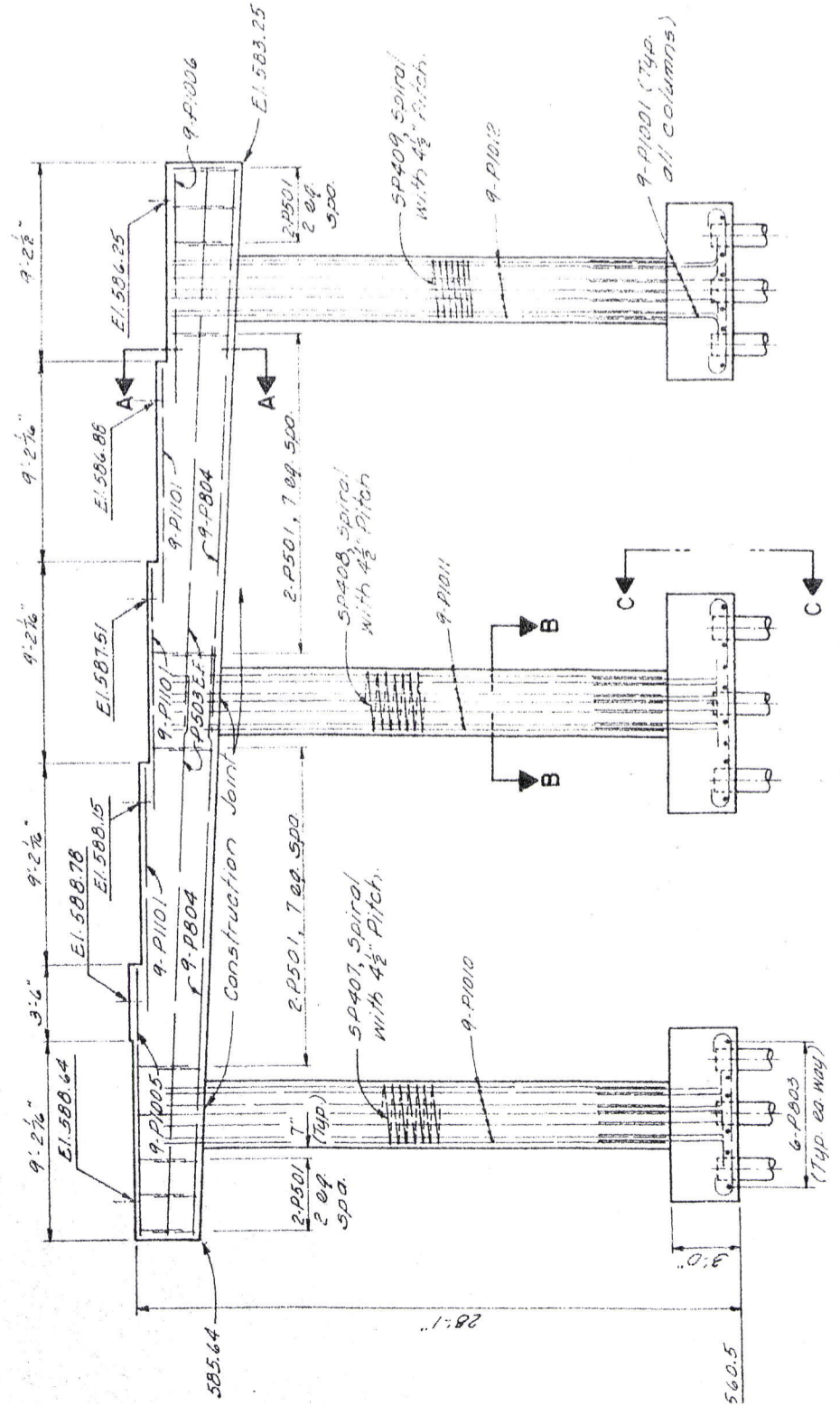
DESIGNED BY	CHECKED BY	DATE
RWR	JM	11/20/62

**LEGEND**

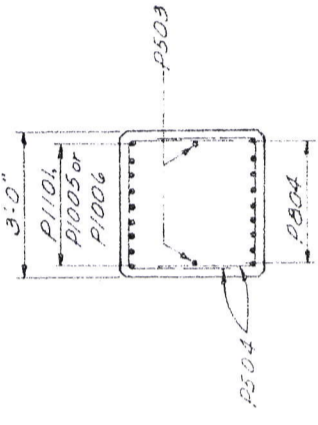
- ⊙ = BATTER PILES 1-4 (AND DIR. OF BATTER)
- N.F. = NEAR FACE
- E.F. = EACH FACE
- F.F. = FAR FACE



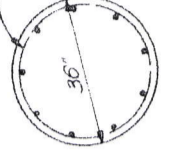
**PLAN**



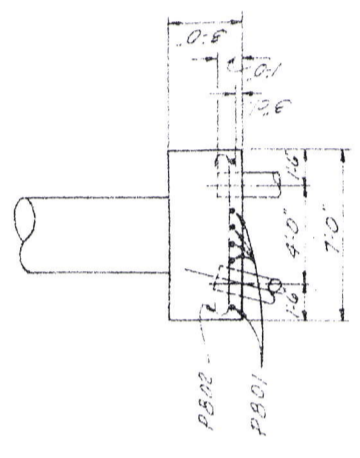
**ELEVATION**



**SECTION A-A**



**SECTION B-B**



**VIEW C-C**

Vertical Column Steel  
P1010, P1011 & P1012

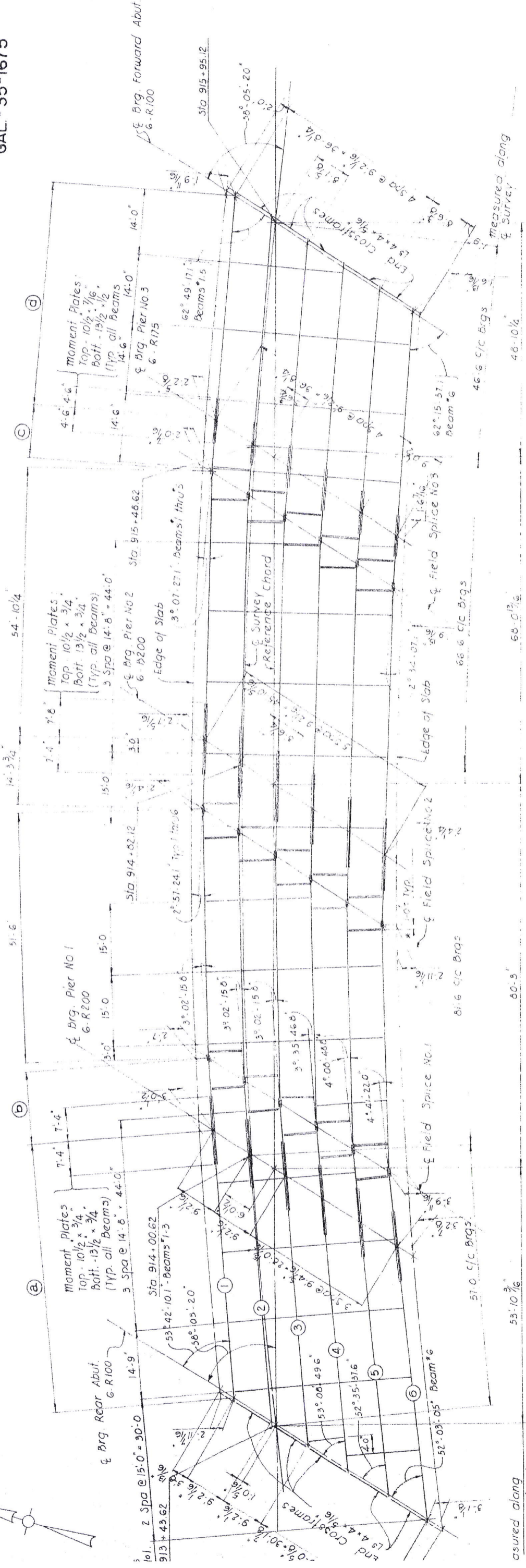
5P407, 5P408 & 5P409 Spiral

**LEGEND**

- ⊙ = BATTER PILES 1-4 (AND DIR. OF BATTER)
- N.F. = NEAR FACE
- E.F. = EACH FACE
- F.F. = FAR FACE



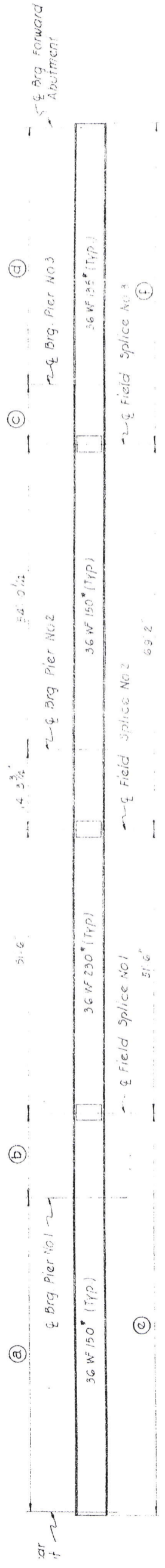
GALLIA COUNTY  
GAL-35-1675



NOTES:

\* Denotes 4 Angles 3 x 3 x 5/16 located only where shown as double line on framing plan.  
For Additional Notes see Sht. 3  
For Additional Details see Sht. 12 & 14

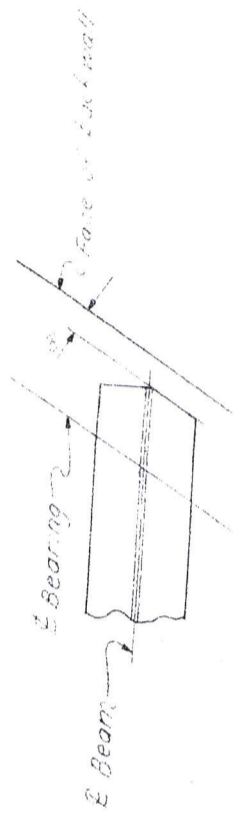
STEEL FRAMING PLAN



TYPICAL BEAM DETAIL

	(a)	(b)	(c)	(d)	(e)	(f)
NO. 1	56'-8 5/8"	15'-9"	11'-8 5/8"	46'-7 7/8"	79'-4 1/2"	59'-2 1/4"
NO. 2	56'-8 5/8"	15'-9"	11'-8 5/8"	46'-7 7/8"	79'-4 1/2"	59'-2 1/4"
NO. 3	56'-8 5/8"	15'-9"	11'-8 5/8"	46'-7 7/8"	79'-4 1/2"	59'-2 1/4"
NO. 4	57'-1 9/16"	15'-10 3/8"	11'-8 9/8"	46'-7 7/8"	73'-4 1/2"	59'-2 1/4"
NO. 5	57'-6 7/8"	15'-11 1/2"	11'-8 9/8"	46'-7 7/8"	74'-5 1/2"	59'-2 1/4"
NO. 6	57'-11 5/8"	16'-1 1/4"	11'-9 5/8"	46'-10 1/4"	75'-0"	59'-5 3/4"

BEAM COPING DETAIL



E. B. PRESTON & ASSOCIATES LIMITED  
ENGINEERS  
COLUMBUS, OHIO

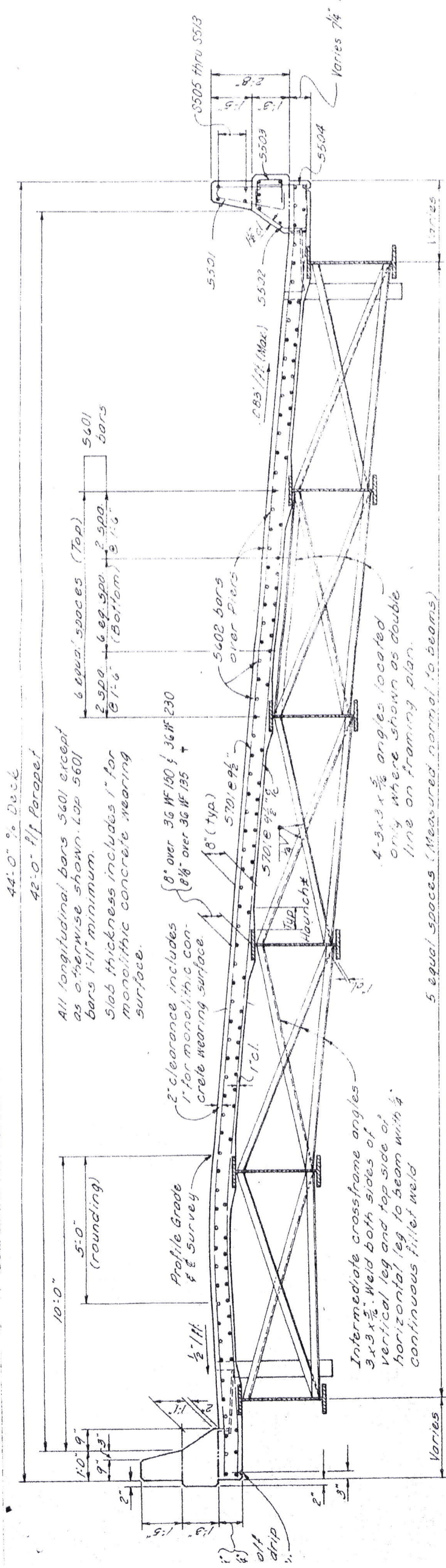
**SUPERSTRUCTURE DETAILS**  
BRIDGE NO. GAL. - 35-1731  
U.S.R. 35 WESTBOUND OVER SR 735  
GALLIA COUNTY  
STA 913+40.76  
STA 915+97.62

DESIGNED BY	DRAWN BY	CHECKED BY	REVISION DATE
A. J. ...	J. K. ...	H. W. ...	...



FED. RD. DIVISION	STATE	PROJECT
2	OHIO	

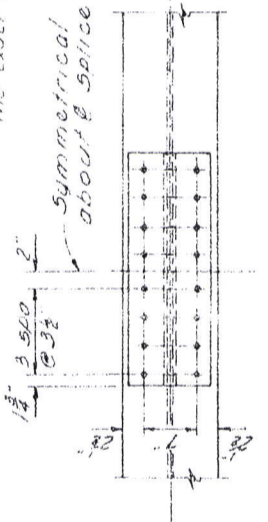
GALLIA COUNTY  
GAL. - 35-1675



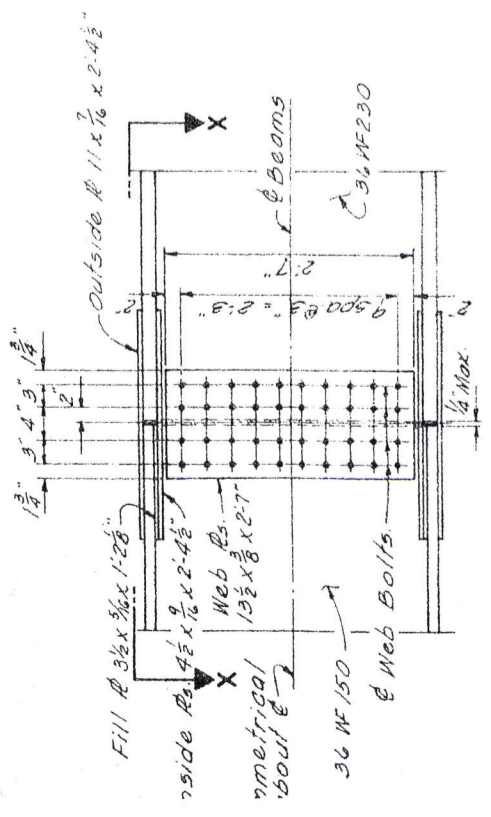
**NOTE:**  
Spical hounch width of 9" shall be used for nputing quantity of concrete. However the inch width may vary between 6" and 12" provided that the slope shall be not more than for a hounch less than 9" wide.

**TRANSVERSE SECTION**

**NOTE:**  
The distance shown from top of deck slab to top of steel beam is the nominal dimension. The quantity of deck concrete to be paid for shall be based on this dimension even though deviation from it may be necessary because the top flange of the beam may not have the exact camber or conformation required to have it parallel to the finish grade. Deduction shall be made for volume of encased steel plates as per section 511.19 of Construction and Material Specifications.

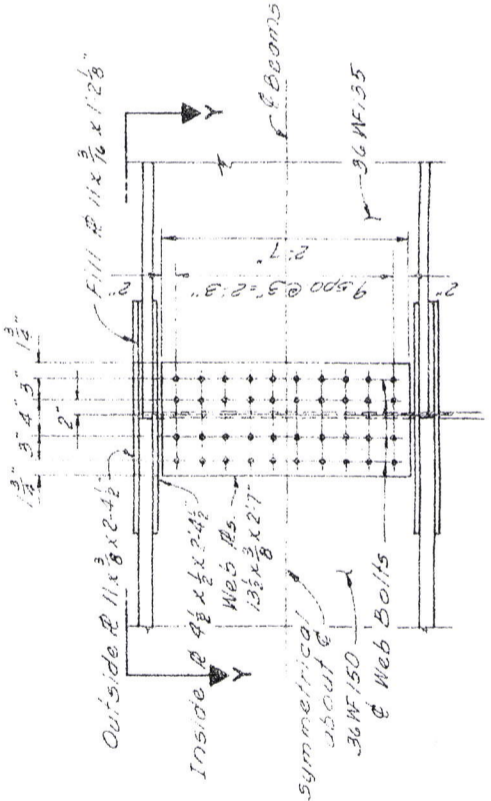


**SECTION X-X**

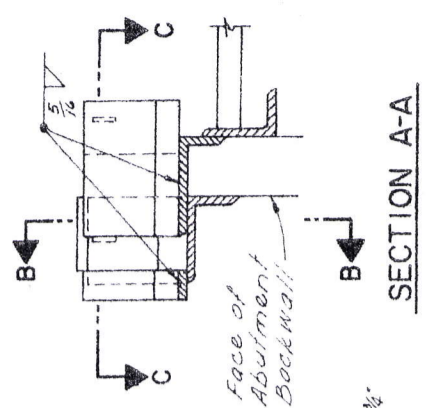


**BEAM SPLICE NO. 1 & 2 DETAIL**

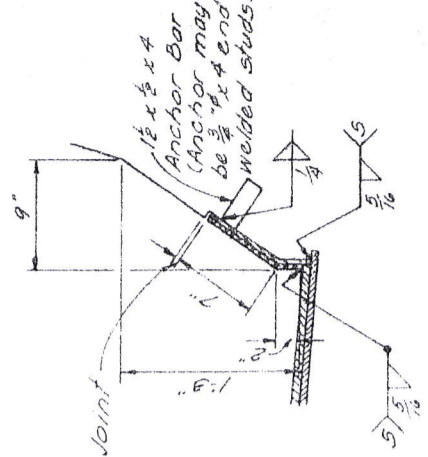
**SECTION Y-Y**



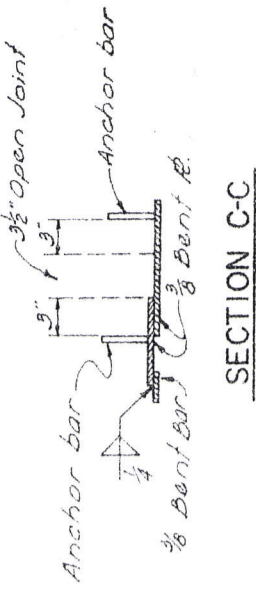
**BEAM SPLICE NO. 3 DETAIL**



**SECTION A-A**



**SECTION B-B**



**SECTION C-C**

**PART PLAN AT ABUTMENT**

E. S. PRESTON & ASSOCIATES, LIMITED  
ENGINEERS  
COLUMBUS, OHIO

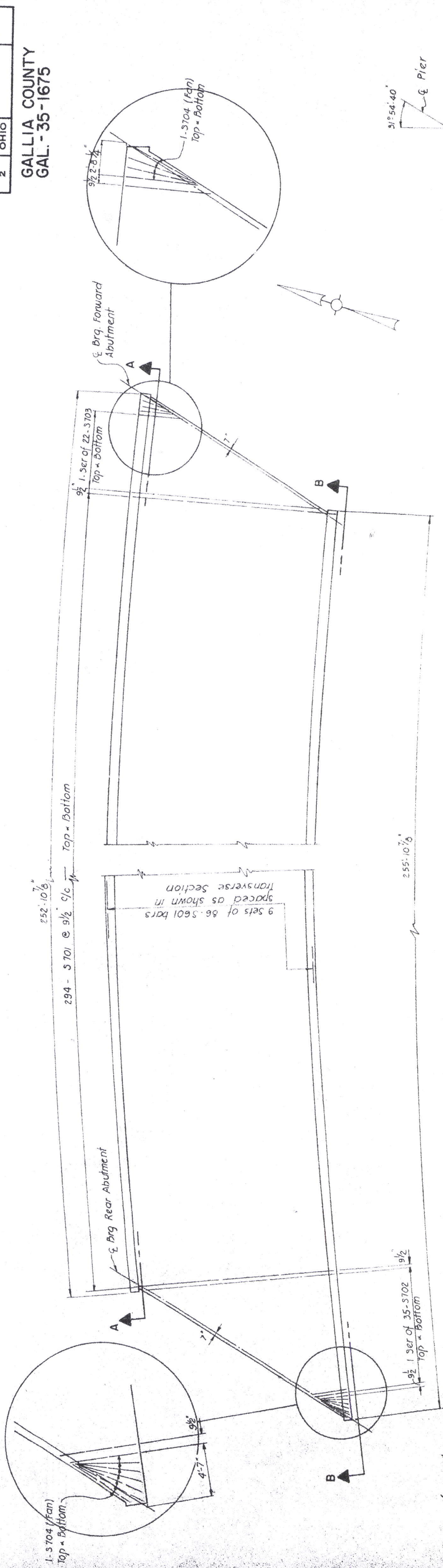
**SUPERSTRUCTURE DETAILS**  
BRIDGE NO. GAL. - 35-1731  
U.S.R. 35 WESTBOUND OVER SR.735  
GALLIA COUNTY  
STA. 913+40.76  
STA. 915+97.62

DATE	SCALE	BY	CHECKED	APPROVED
MMV 55	3/8	AWP		

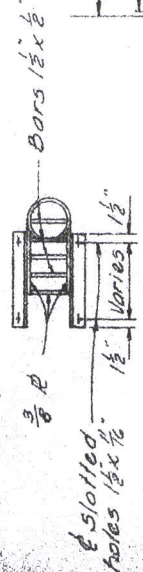


FED. RD. DIVISION	STATE	PROJECT
2	OHIO	

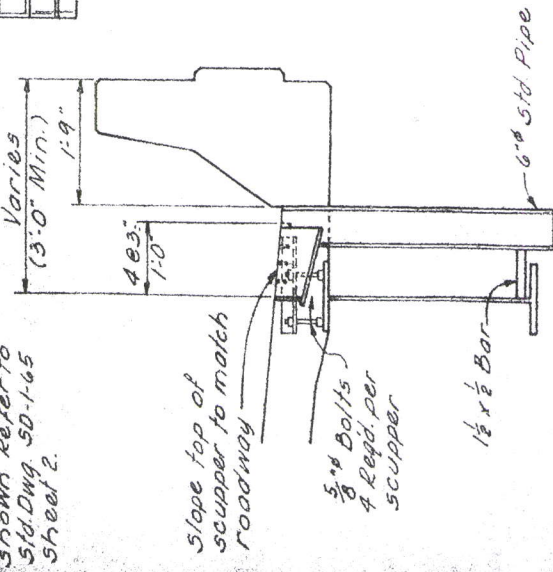
GALLIA COUNTY  
GAL-35-1675



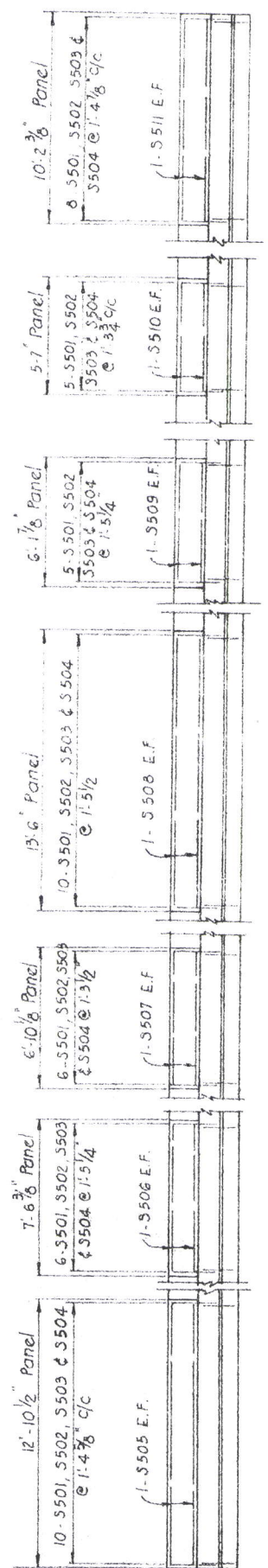
Support angles  
2 1/2" x 2 1/2" x 1/2"



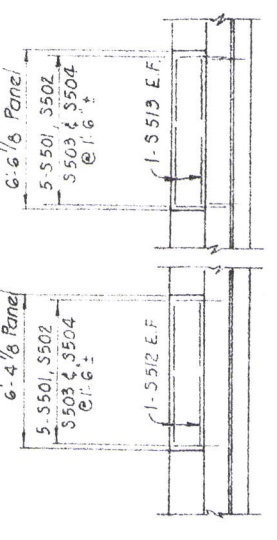
NOTE:  
For dimensions and details not shown refer to Std. Dwg. SD-1-65 Sheet 2.



SLAB REINFORCING PLAN

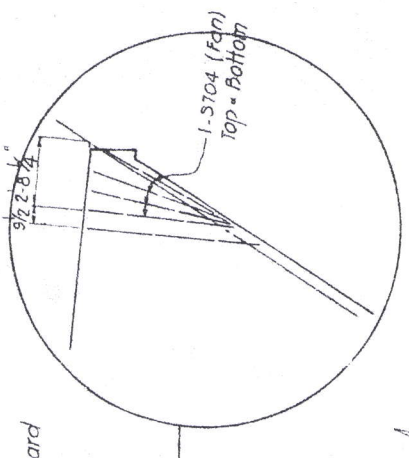
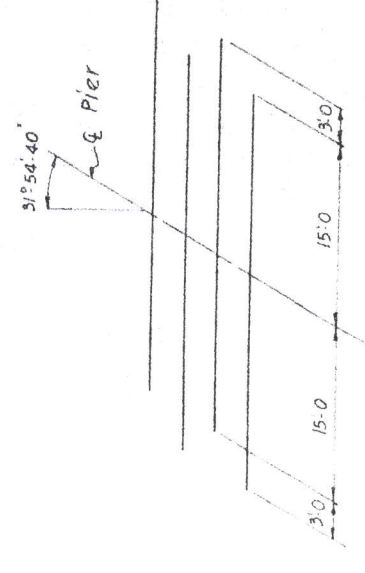


SECTION A-A  
(NORTH PARAPET)



VIEW B-B  
(SOUTH PARAPET)

DIAGRAM SHOWING STAGGER  
OF S602 OVER PIERS(TYP.)



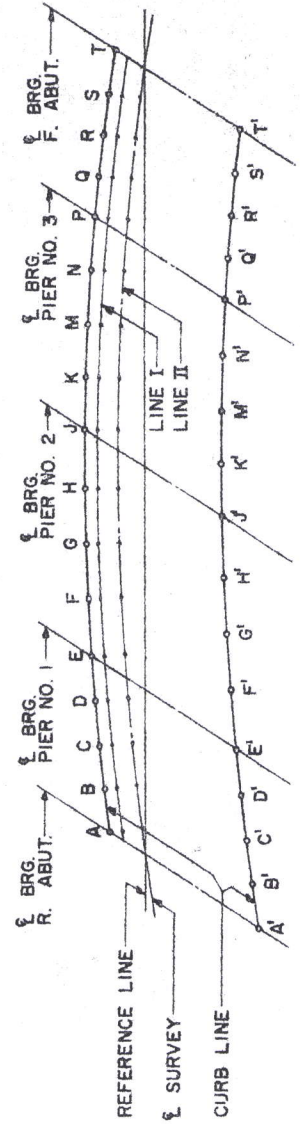
NOTE:  
Parapet panels as shown are intended to be representative only. One panel of each length has been detailed. For panel arrangement and location see General Plan, Sheet 2.

E. S. PRESTON & ASSOCIATES, LIMITED			
ENGINEERS			
COLUMBUS, OHIO			
SUPERSTRUCTURE DETAILS			
BRIDGE NO. 35-1731			
U.S.R. 35 WESTBOUND OVER S.R. 735			
GALLIA COUNTY			
STA. 913+40.76		STA. 915+97.62	
DESIGNED	DRAWN	CHECKED	REVIEWED DATE
MMF	ES	HWR	11/13/11

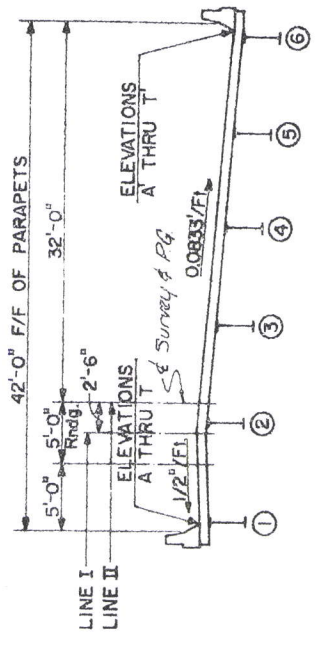


FED. NO.	STATE	PROJECT
2	OHIO	

**GALLIA COUNTY  
GAL. - 35-1675**



**CONTROL ELEVATIONS LOCATION PLAN**



**SECTION THRU DECK LOOKING FORWARD ON STATIONING**  
(ALL DIMENSIONS ARE RADIAL)

**SUPPLEMENTAL DECK CONTROL ELEVATIONS +**

RADIAL FROM POINT	SURVEY STATION	CONSTRUCTION ELEV	LINE I	LINE II
A		594.24	594.11	
B		594.27	594.14	
C		594.29	594.16	
D		594.30	594.17	
E		594.30	594.17	
F		594.28	594.15	
G		594.24	594.11	
H		594.16	594.05	
J		594.09	593.96	
K		594.00	593.87	
M		593.90	593.97	
N		593.78	593.65	
P		593.65	593.57	
Q		593.55	593.47	
R		593.44	593.31	
S		593.32	593.19	

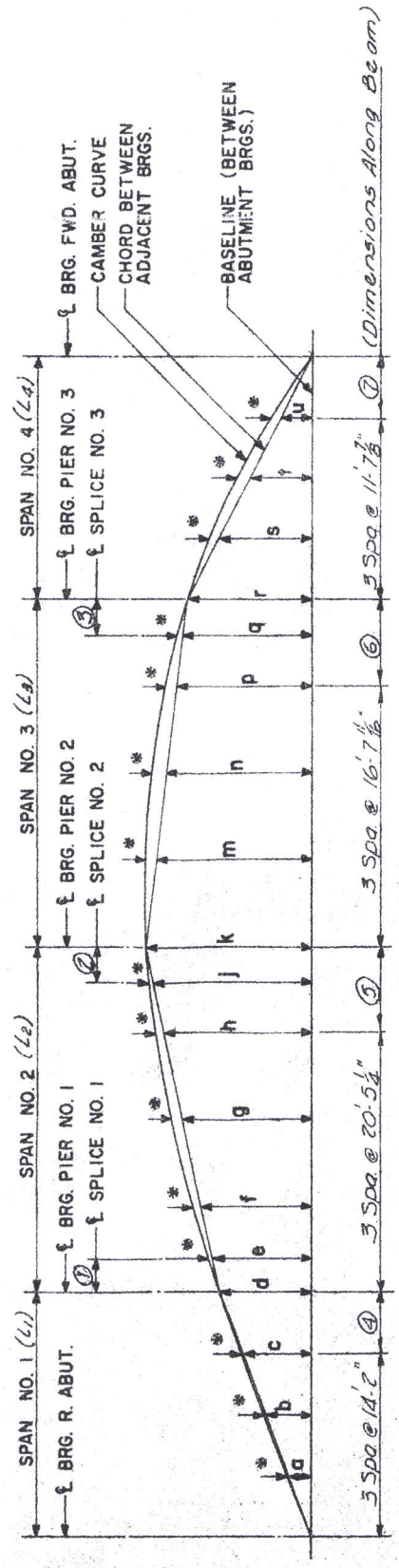
**+ NOTE:**

The Construction Elevations shown are those required before the concrete deck is placed, so that the proper allowance is made for the dead load deflection caused by the weight of the concrete.

E. E. PRESTON & ASSOCIATES LIMITED  
ENGINEERS  
COLUMBUS, OHIO

**SUPERSTRUCTURE DETAILS**  
BRIDGE NO. GAL. - 35-1731  
U.S.R. 35 WESTBOUND OVER S.R. 735  
GALLIA COUNTY  
STA 913+40.76  
STA 915+87.62

DATE: MAY 1954  
DRAWN BY: [Signature]  
CHECKED BY: [Signature]  
APPROVED BY: [Signature]



**CAMBER DIAGRAM**

LOCATION	a	b	c	d	e	f	g	h	i	j	k	l	m	n	o	p	q	r	s	t	u	v	w	x	y	z
BEAM NO. 1	1/8	1/8	1/8	1/8	1/8	1/8	1/8	1/8	1/8	1/8	1/8	1/8	1/8	1/8	1/8	1/8	1/8	1/8	1/8	1/8	1/8	1/8	1/8	1/8	1/8	1/8
BEAM NO. 2	1/8	1/8	1/8	1/8	1/8	1/8	1/8	1/8	1/8	1/8	1/8	1/8	1/8	1/8	1/8	1/8	1/8	1/8	1/8	1/8	1/8	1/8	1/8	1/8	1/8	1/8
BEAM NO. 3	1/8	1/8	1/8	1/8	1/8	1/8	1/8	1/8	1/8	1/8	1/8	1/8	1/8	1/8	1/8	1/8	1/8	1/8	1/8	1/8	1/8	1/8	1/8	1/8	1/8	1/8
BEAM NO. 4	1/8	1/8	1/8	1/8	1/8	1/8	1/8	1/8	1/8	1/8	1/8	1/8	1/8	1/8	1/8	1/8	1/8	1/8	1/8	1/8	1/8	1/8	1/8	1/8	1/8	1/8
BEAM NO. 5	1/8	1/8	1/8	1/8	1/8	1/8	1/8	1/8	1/8	1/8	1/8	1/8	1/8	1/8	1/8	1/8	1/8	1/8	1/8	1/8	1/8	1/8	1/8	1/8	1/8	1/8
BEAM NO. 6	1/8	1/8	1/8	1/8	1/8	1/8	1/8	1/8	1/8	1/8	1/8	1/8	1/8	1/8	1/8	1/8	1/8	1/8	1/8	1/8	1/8	1/8	1/8	1/8	1/8	1/8

**DECK CONSTRUCTION CONTROL ELEVATIONS +**

POINT	LOCATION	SURVEY STATION	CONSTRUCTION ELEVATION
A'	Rear Abut	913+13.25	591.38
B'	1/2 L1	+33.14	591.45
C'	1/2 L1	+48.07	591.50
D'	1/2 L1	+62.89	591.53
E'	Pier 1	913+77.74	591.56
F'	1/2 L2	+98.96	591.57
G'	1/2 L2	914+20.16	591.56
H'	1/2 L2	+41.34	591.52
J'	Pier 2	914+62.51	591.46
K'	1/2 L3	+79.76	591.39
M'	1/2 L3	+97.00	591.31
N'	1/2 L3	915+14.24	591.21
P'	Pier 3	915+51.46	591.09
Q'	1/2 L4	+45.50	591.00
R'	1/2 L4	+55.53	590.90
S'	1/2 L4	+67.56	590.79
T'	Fwd. Abut	915+79.58	590.67
A	Rear Abut	913+50.79	594.03
B	1/2 L1	+64.86	594.07
C	1/2 L1	+78.94	594.09
D	1/2 L1	+93.02	594.10
E	Pier 1	914+07.10	594.10
F	1/2 L2	+27.24	594.08
G	1/2 L2	+47.58	594.04
H	1/2 L2	+67.53	593.98
J	Pier 2	914+67.69	593.89
K	1/2 L3	915+04.14	593.80
M	1/2 L3	+20.59	593.70
N	1/2 L3	+37.04	593.58
P	Pier 3	915+53.50	593.45
Q	1/2 L4	+65.01	593.35
R	1/2 L4	+76.52	593.24
S	1/2 L4	+88.03	593.12
T	Fwd. Abut	915+99.54	593.00

**DEFLECTION AND CAMBER TABLE**

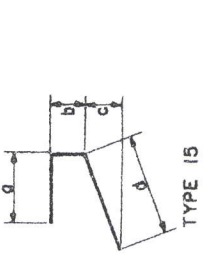
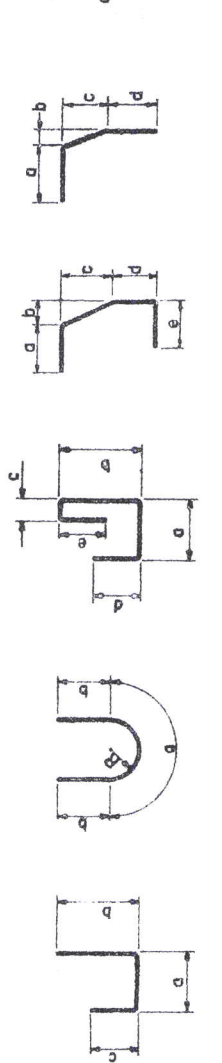
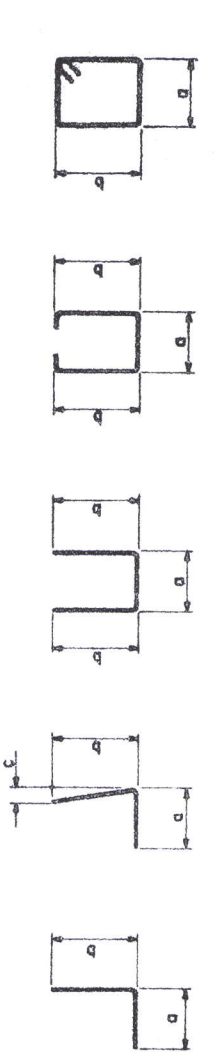
DESCRIPTION	SPAN NO. 1		SPAN NO. 2		SPAN NO. 3		SPAN NO. 4	
	1/2 L1	1/2 L1	1/2 L2	1/2 L2	1/2 L3	1/2 L3	1/2 L4	1/2 L4
DEFLECTION DUE TO WEIGHT OF STEEL	0	0	0	0	0	0	0	0
DEFLECTION DUE TO REMAINING DEAD LOAD	1/4	1/4	1/4	1/4	1/4	1/4	1/4	1/4
ADJUSTMENT REQUIRED DUE TO VERTICAL CURVE AND/OR SUPERELEVATION	1/8	1/8	1/8	1/8	1/8	1/8	1/8	1/8
REQUIRED SHOP CAMBER	3/8	3/8	3/8	3/8	3/8	3/8	3/8	3/8
DEFLECTION DUE TO WEIGHT OF STEEL	0	0	0	0	0	0	0	0
DEFLECTION DUE TO REMAINING DEAD LOAD	1/4	1/4	1/4	1/4	1/4	1/4	1/4	1/4
ADJUSTMENT REQUIRED DUE TO VERTICAL CURVE AND/OR SUPERELEVATION	1/8	1/8	1/8	1/8	1/8	1/8	1/8	1/8
REQUIRED SHOP CAMBER	3/8	3/8	3/8	3/8	3/8	3/8	3/8	3/8
DEFLECTION DUE TO WEIGHT OF STEEL	0	0	0	0	0	0	0	0
DEFLECTION DUE TO REMAINING DEAD LOAD	1/4	1/4	1/4	1/4	1/4	1/4	1/4	1/4
ADJUSTMENT REQUIRED DUE TO VERTICAL CURVE AND/OR SUPERELEVATION	1/8	1/8	1/8	1/8	1/8	1/8	1/8	1/8
REQUIRED SHOP CAMBER	3/8	3/8	3/8	3/8	3/8	3/8	3/8	3/8
DEFLECTION DUE TO WEIGHT OF STEEL	0	0	0	0	0	0	0	0
DEFLECTION DUE TO REMAINING DEAD LOAD	1/4	1/4	1/4	1/4	1/4	1/4	1/4	1/4
ADJUSTMENT REQUIRED DUE TO VERTICAL CURVE AND/OR SUPERELEVATION	1/8	1/8	1/8	1/8	1/8	1/8	1/8	1/8
REQUIRED SHOP CAMBER	3/8	3/8	3/8	3/8	3/8	3/8	3/8	3/8



GALLIA COUNTY  
 GAL. - 35-1675

REINFORCING STEEL SCHEDULE

MARK	NO.	LENGTH	TYPE	DIMENSIONS							WEIGHT	
				a	b	c	d	e	f	Rad. Inc.		
A 536	2	10'-0"	3	7'-0"	3'-1"	1'-3"						21
A 537	8	6'-6"	Str									54
A 538	2	9'-0"										19
A 539	12	12'-6"										156
A 540	2	10'-0"	Str									21
A 541	2	9'-2"	3	7'-0"	2'-3"	9"						19
A 542	4	8'-7"	Str									36
A 401	72	2'-0"	Str									96
S 701	588	43'-10"	Str									52,682
S 702	3,335	2'-9.76"	Str							1'-0 1/4"		3,482
S 703	2,522	2'-3.76"	Str							1'-7"		2,154
S 704	22	6'-0"	Str									270
S 601	864	30'-0"	Str									38,932
S 602	114	33'-0"	Str									5,651
S 501	390	2'-0"	6	1'-0"	7 1/2"							815
S 502	390	5'-4"	14	2'-2"	2'-5"	7 1/2"						2,172
S 503	390	2'-0"	4	7 1/2"	1'-6"							815
S 504	390	3'-3"	12	9"	9"	11 1/2"	9"	7 1/2"				1,322
S 505	32	12'-6"	Str									417
S 506	16	7'-2"										120
S 507	8	6'-6"										35
S 508	72	13'-2"										989
S 509	8	5'-9"										48
S 510	4	5'-3"										22
S 511	32	9'-10"										328
S 512	4	6'-1"										25
S 513	8	6'-2"										51
P 1001	87	11'-2"	Str									5,161
P 1001	81	7'-0"	4	1'-4 1/2"	5'-11"							2,440
P 1002	9	24'-0"	Str									929
P 1003	9	23'-6"										910
P 1004	9	21'-9"										842
P 1005	9	12'-4"										478
P 1006	9	11'-0"										426
P 1007	9	21'-3"										823
P 1008	9	20'-6"										794
P 1009	9	19'-0"										736
P 1010	9	24'-3"										939
P 1011	9	23'-3"										900
P 1012	9	23'-3"										862
P 901	40	12'-4"										1,677
P 902	16	26'-3"										1,428
P 903	16	25'-11"	Str									1,410
P 801	62	11'-10"										1,959
P 802	40	8'-10"										943
P 803	24	9'-10"										630
P 804	18	25'-9"	Str									1,238
P 502	4	25'-7"	Str									727
P 503	8	25'-4"	Str									107
SP 401	1	22'-10 1/2"	Spiral									211
SP 402	1	21'-9"										410
SP 403	1	20'-7 1/2"										389
SP 404	1	20'-3"										369
SP 405	1	19'-1 1/2"										363
SP 406	1	18'-0"										343
SP 407	1	23'-3"										322
SP 408	1	22'-6"										416
SP 409	1	21'-4"	Spiral									403
SP 409	1	21'-4"	Spiral									383



REPLACEMENT BARS

MARK	NO	LENGTH	TYPE	DIMENSIONS		
				a	b	c
RE 1100	1	8'-6"	Str			
RE 1000	1	8'-2"				
RE 900	1	7'-10"				
RE 800	1	7'-6"				
RE 700	3	7'-2"				
RE 600	3	6'-11"				
RE 500	1	6'-7"	Str			

BAR SIZE is indicated in the bar mark. The first digit where three digits are used, and the first two digits where four are used indicate the bar size number. For example, A700 is No. 7 size and A1014 is a No. 10 size.

SPIRAL REINFORCING BARS: The "Length" shown on the steel list for the spiral is the distance from the top of footing to the bottom of the pier cap.  
 The "No. of Turns" shown is the "Length" divided by pitch, plus 3 turns (total number of closed coils), expressed as the nearest whole number. Spiral bars may be plain structural grade conforming to ASTM A15. 1/2 closed coils shall be provided at the ends of each spiral unit.  
 Four steel angle spacers 1 x 1/8 weighing .80 lb per lin. ft. of spacer shall be provided for each spiral unit. They shall be equally spaced along the periphery of the coil. The number of pounds of these spacers, based on 80 lb. per lin ft will be paid for as reinforcing steel and is included in the tabulated quantity of spiral bars.

SPIRAL DATA

No. Turns	Pitch
61	4 1/2"
58	4 1/2"
55	4 1/2"
54	4 1/2"
51	4 1/2"
48	4 1/2"
62	4 1/2"
60	4 1/2"
57	4 1/2"

E. S. PRESTON & ASSOCIATES LIMITED 15/15  
 ENGINEERS  
 COLUMBUS, OHIO

**REINFORCING STEEL LIST**  
 BRIDGE NO. GAL. - 35-1731  
 U.S.R. 35 WESTBOUND OVER S.R. 735  
 GALLIA COUNTY

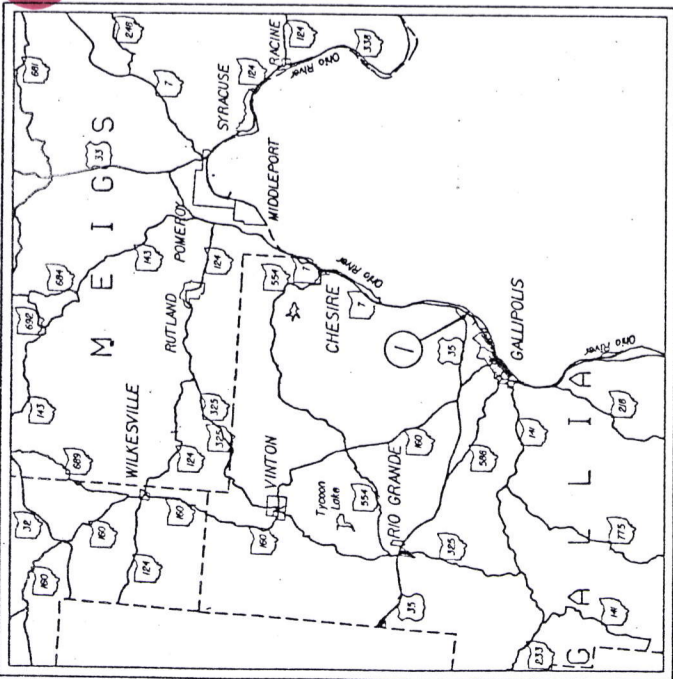
STA 913+40.76  
 STA 915+97.62

DATE: 11/11/62  
 DRAWN: H.W.  
 CHECKED: J.M.  
 REVISION:



# Jim Curbett

STATE OF OHIO  
DEPARTMENT OF TRANSPORTATION



## GAL - US35 - 17.43

GALLIA COUNTY

### INDEX OF SHEETS:

- 1 TITLE SHEET
- 2 GENERAL NOTES
- 3 BRIDGE REPAIR DETAILS SHEET
- 4 PAVEMENT MARKING
- 5 GENERAL SUMMARY

PORION TO BE IMPROVED  
STATE & FEDERAL ROUTES  
OTHER ROADS



### PROJECT DESCRIPTION

REMOVING EXISTING 1/4" OVERLAY AND REPLACING IT WITH A 1 1/4" THICK MICRO-SILICA MODIFIED CONCRETE OVERLAY ALSO REMOVING AND REPLACING 1 1/4" OF ASPHALT OVER THE APPROACH SLABS.

BR-24-95  
270 1413

### 1995 SPECIFICATIONS

THE STANDARD SPECIFICATIONS OF THE STATE OF OHIO, DEPARTMENT OF TRANSPORTATION, INCLUDING CHANGES AND SUPPLEMENTAL SPECIFICATIONS LISTED IN THE PROPOSAL SHALL GOVERN THIS IMPROVEMENT.

I HEREBY APPROVE THESE PLANS AND DECLARE THAT THE MAKING OF THIS IMPROVEMENT WILL NOT REQUIRE THE CLOSING TO TRAFFIC OF THE HIGHWAY AND THAT PROVISIONS FOR THE MAINTENANCE AND SAFETY OF TRAFFIC WILL BE AS SET FORTH ON THE PLANS AND ESTIMATES.

RAILROAD INVOLVEMENT NONE

GAL-US35-1743

APPROVED *John P. Koubek* DISTRICT DEPUTY DIRECTOR  
DATE 4-19-95

APPROVED \_\_\_\_\_ ENGINEER, BUREAU OF BRIDGES AND STRUCTURAL DESIGN

APPROVED *Alfred W. H. Hynds* DEPUTY DIRECTOR, OPERATIONS  
DATE 4-28-95

APPROVED *James L. Gray* DIRECTOR, DEPARTMENT OF TRANSPORTATION  
DATE 4-28-95

#### STANDARD CONSTRUCTION DRAWINGS

		SUPPLEMENTAL SPECIFICATIONS
BP - 3.1	2/21/92	SS-802 4/13/90
MT-95.30	10/10/88	
MT-99.10	11/14/86	
MT-99.20	4/29/88	
MT-105.10	7/11/92	
MT-105.11	7/11/92	
TC-35.10	8/29/84	

**UNDERGROUND UTILITIES**  
TWO WORKING DAYS  
**BEFORE YOU DIG**  
CALL 1-800-362-2764 (TOLL FREE)  
OHIO UTILITIES PROTECTION SERVICE  
NON-MEMBERS  
MUST BE CALLED DIRECTLY

PLAN PREPARED BY:  
DISTRICT 10  
OPERATIONS DESIGN SECTION

7-19-95

500



# GENERAL NOTES

PLAN NO.

## ITEM 614 - MAINTAINING TRAFFIC

ONE 10' MIN. LAWE SHALL BE MAINTAINED ON GAL-35-1743. ALL TRAFFIC CONTROL DEVICES AND THEIR LOCATIONS SHALL BE IN ACCORDANCE WITH THE OHIO MANUAL OF UNIFORM TRAFFIC CONTROL DEVICES AND AS SHOWN ON STANDARD DRAWING MT-95.30. ALL SIGNS, SIGNAL HEADS, ETC., SHALL BE FURNISHED BY THE CONTRACTOR.

IT IS THE INTENTION TO PERFORM THE REQUIRED WORK WITH THE LEAST INCONVENIENCE TO, AND MAXIMUM SAFETY OF THE TRAVELING PUBLIC AND CONTRACTOR. ANY VARIANCE FROM THESE MAINTENANCE OF TRAFFIC NOTES MUST BE APPROVED IN ADVANCE IN WRITING BY THE DIRECTOR. THE REQUIREMENTS FOR MAINTAINING TRAFFIC AS INDICATED IN THE CURRENT EDITION OF THE OHIO MANUAL OF UNIFORM TRAFFIC CONTROL DEVICES FOR STREETS AND HIGHWAYS AND PERTINENT ITEMS OF THE SPECIFICATIONS AND PROPOSAL SHALL APPLY. BEFORE WORK BEGINS, THE CONTRACTOR SHALL SUBMIT TO THE ENGINEER THE NAMES AND TELEPHONE NUMBERS OF PERSONS WHO CAN BE CONTACTED 24 HOURS A DAY BY THE OHIO DEPARTMENT OF TRANSPORTATION AND ALL INTERESTED POLICE AGENCIES. THESE PERSONS SHALL BE RESPONSIBLE FOR PLACING OR REPLACING THE NECESSARY TRAFFIC CONTROL DEVICES TO MAINTAIN THE TRAVELED PAVEMENT SAFETY. THE WORK LIMITS SHOWN ON THESE PLANS ARE FOR PHYSICAL CONSTRUCTION ONLY. THE INSTALLATION AND OPERATION OF ALL TRAFFIC CONTROL DEVICES REQUIRED SHALL BE PROVIDED BY THE CONTRACTOR WHETHER INSIDE OR OUTSIDE THESE WORK LIMITS.

ALL WORK AND TRAFFIC CONTROL DEVICES SHALL BE IN ACCORDANCE WITH ITEM 614 AND OTHER APPLICABLE PORTIONS OF THE SPECIFICATIONS, AS WELL AS THE OHIO MANUAL OF UNIFORM TRAFFIC CONTROL DEVICES. PAYMENT FOR ALL LABOR, EQUIPMENT, AND MATERIALS SHALL BE INCLUDED IN THE LUMP SUM CONTRACT PRICE FOR ITEM 614, MAINTAINING TRAFFIC, UNLESS SEPARATELY ITEMIZED ON THE PLAN.

## CONTINGENCY QUANTITIES

THE CONTRACTOR SHALL NOT ORDER MATERIALS OR PERFORM WORK FOR ITEMS DESIGNATED BY PLAN NOTE TO BE USED \*AS DIRECTED BY THE ENGINEER\* UNLESS AUTHORIZED BY THE ENGINEER. THE ACTUAL WORK LOCATIONS AND QUANTITIES USED FOR SUCH ITEMS SHALL BE INCORPORATED INTO THE FINAL CHANGE ORDER GOVERNING COMPLETION OF THIS PROJECT.

## EXISTING STRUCTURE VERIFICATION

DETAILS AND DIMENSIONS SHOWN ON THESE PLANS, PERTAINING TO THE EXISTING STRUCTURE HAVE BEEN OBTAINED FROM PLANS OF THE EXISTING STRUCTURE AND/OR FROM FIELD OBSERVATION AND MEASUREMENTS. CONSEQUENTLY, THEY ARE INDICATIVE OF THE EXISTING STRUCTURE AND THE PROPOSED WORK BUT THEY SHALL BE CONSIDERED TENTATIVE AND APPROXIMATE. THE CONTRACTOR IS REFERRED TO CMS SECTIONS 102.05 AND 105.02.

CONTRACT BID PRICES SHALL BE BASED UPON A RECOGNITION OF THE UNCERTAINTIES DESCRIBED ABOVE AND UPON A PREBID EXAMINATION OF THE EXISTING STRUCTURES BY THE CONTRACTOR. HOWEVER, ALL PROJECT WORK SHALL BE BASED UPON ACTUAL DETAILS AND DIMENSIONS WHICH HAVE BEEN VERIFIED BY THE CONTRACTOR IN THE FIELD.

## TEMPORARY WORK ZONE MARKINGS

THE FOLLOWING ESTIMATED QUANTITY HAS BEEN CARRIED TO THE GENERAL SUMMARY FOR USE AS DIRECTED BY THE ENGINEER FOR TEMPORARY WORK ZONE PAVEMENT MARKINGS PER THE REQUIREMENTS OF THE STANDARD CONSTRUCTION DRAWINGS:

ITEM 614, TEMPORARY PAVEMENT MARKINGS 0.56 MI.

## ITEM 407 - TACK COAT

THE RATE OF APPLICATION OF 407 TACK COAT SHALL BE SUBJECT TO ADJUSTMENT AS DIRECTED BY THE ENGINEER. PLAN QUANTITIES INDICATE AN AVERAGE APPLICATION RATE OF 0.05 GALLONS PER SQUARE YARD OF TACK COAT FOR ESTIMATING PURPOSES ONLY.

## WORK LIMITS

THE WORK LIMITS SHOWN ON THESE PLANS ARE FOR PHYSICAL CONSTRUCTION ONLY. THE INSTALLATION AND OPERATION OF ALL TEMPORARY TRAFFIC CONTROL AND TEMPORARY TRAFFIC CONTROL DEVICES REQUIRED BY THESE PLANS SHALL BE PROVIDED BY THE CONTRACTOR WHETHER INSIDE OR OUTSIDE THESE WORK LIMITS.

## PREPARATION OF EXISTING DECK

AFTER THE EXISTING LATEX-MODIFIED OVERLAY IS REMOVED, ADDITIONAL DECK PREPARATION MAY BE NECESSARY TO REMOVE TRAFFIC CONTAMINATED AREAS PRIOR TO PLACEMENT OF THE MICRO-SILICA OVERLAY. PAYMENT FOR ADDITIONAL DECK PREPARATION SHALL BE INCLUDED IN THE UNIT PRICE BID FOR ITEM SPECIAL-MICRO-SILICA MODIFIED CONCRETE OVERLAY (VARIABLE THICKNESS).

## UTILITIES

THERE ARE NO UNDERGROUND UTILITIES SHOWN ON THIS PLAN. THE NATURE OF THE WORK REQUIRED BY THIS PROJECT WILL NOT AFFECT ANY KNOWN UNDERGROUND UTILITIES THAT EXIST UNDER OR ADJACENT TO THE WORK AREA.

## ITEM 802 - BARRIER REFLECTOR, TYPE A, AS PER PLAN

ALL REFLECTORS SHALL MEET OR EXCEED REQUIREMENTS IN SUPPLEMENTAL SPECIFICATION 802, AND SHALL BE REFLEXITE MODEL NO. 650 OR ITS APPROVED FUNCTIONAL EQUIVALENT. REFLECTORS ARE TO BE ATTACHED TO THE GUARDRAIL USING EXISTING POST BOLTS AT LOCATIONS DESIGNATED BY THE ENGINEER. NO ADHESIVE SHALL BE USED WHEN ATTACHING THE REFLECTORS TO THE GUARDRAIL. INFORMATION ON REFLEXITE MODEL NO. 650 CAN BE OBTAINED FROM REFLEXITE CORP., P.O. BOX 1200 315 SOUTH STREET, NEW BRITAIN, CT. 06050.

THE FOLLOWING QUANTITIES HAVE BEEN INCLUDED IN THE GENERAL SUMMARY:

ITEM 802 - BARRIER REFLECTOR, TYPE A, AS PER PLAN 32 EACH

ITEM 802 - BARRIER REFLECTOR, TYPE B 8 EACH



# BRIDGE REPAIR DETAILS

GAL - 35 - 1743

PLAN NO.

## SCOPE OF PROPOSED WORK ON STRUCTURE

THIS PROJECT SHALL CONSIST OF REPAIRING CONCRETE BRIDGE DECK BY REMOVING EXISTING LATEX MODIFIED CONCRETE AND PLACING 1 1/4" MICRO-SILICA MODIFIED CONCRETE OVERLAY.

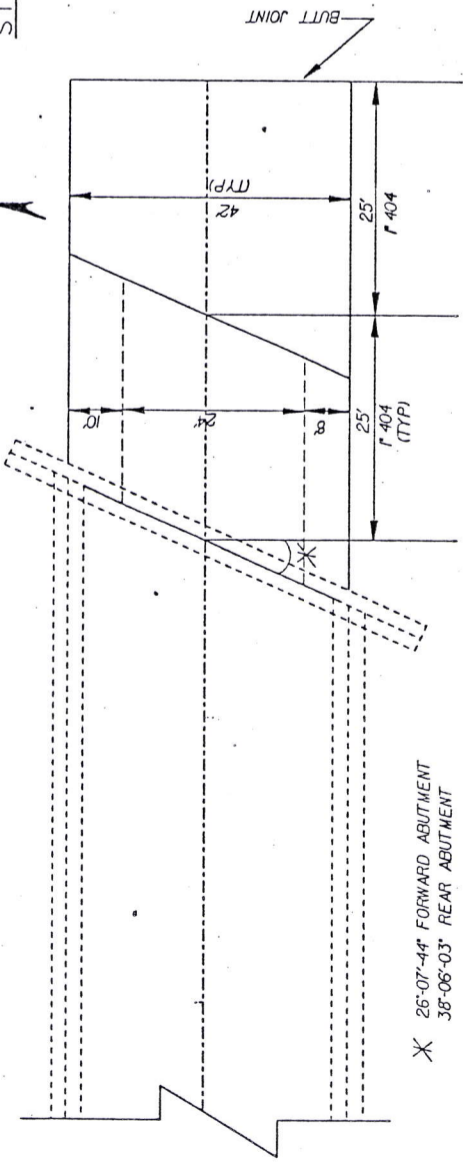
ITEM 202, WEARING COURSE REMOVED  
 ((20.6' X 42')/2)/9 = 48 SQ.YD. (ASPHALT FWD. ABUTMENT)  
 (29.4' X 42')/9 = 137 SQ.YD. (ASPHALT FWD. ABUTMENT)  
 (33' X 42')/2)/9 = 77 SQ.YD. (ASPHALT REAR ABUTMENT)  
 (17' X 42')/9 = 79 SQ.YD. (ASPHALT REAR ABUTMENT)  
 (256.86' X 40.5')/9 = 1156 SQ.YD. (LATEX MODIFIED CONCRETE)  
 ((10'/12' X 24') + (16'/12' X 18'))/2)/9 = 10 SQ.YD. (LATEX MODIFIED CONCRETE)  
 TOTAL = 1507 SQ.YD. (QUANTITY CARRIED TO GENERAL SUMMARY)

ITEM 448, ASPHALT CONCRETE SURFACE COURSE, AC-20  
 TOTAL SQ.YDS. FROM ABOVE = 48 + 137 + 77 + 79 + 341 SQ.YDS.  
 (341 SQ.YD. X 1.25'/12)/3 = 12 CU.YD.  
 TOTAL = 12 CU.YD. (QUANTITY CARRIED TO GENERAL SUMMARY)

ITEM 407, TACK COAT  
 341 YD. X .05 GAL/SQ.YD = 17 GAL.  
 USE 17 GAL. (QUANTITY CARRIED TO GENERAL SUMMARY)  
 ITEM SPECIAL MICRO-SILICA MODIFIED CONCRETE (1 1/4" THICK), AS PER PLAN  
 (256.86' X 40.5')/9 = 1156 SQ.YD. (MICRO-SILICA MODIFIED CONCRETE)  
 ((10'/12' X 24') + (16'/12' X 18'))/2)/9 = 10 SQ.YD. (MICRO-SILICA MODIFIED CONCRETE)  
 TOTAL = 1166 SQ.YD. (QUANTITY CARRIED TO GENERAL SUMMARY)

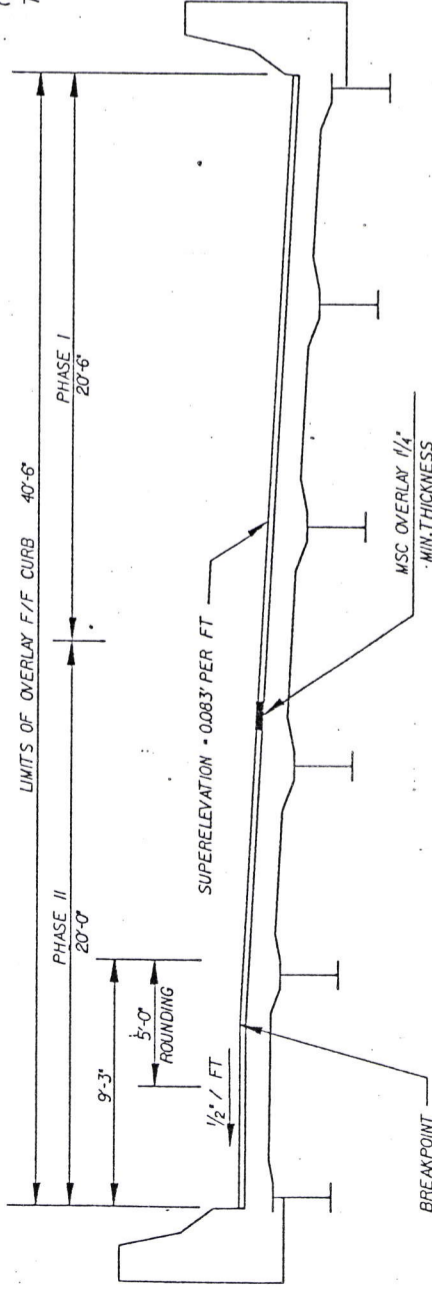
SANDBLAST BOTTOM OF SCUPPER AND FILL WITH DECK OVERLAY MATERIAL AS SHOWN. BAR REMOVAL AND PLACEMENT OF CONCRETE WEDGE IN SCUPPERS SHALL BE INCLUDED WITH ITEM SPECIAL MICRO-SILICA MODIFIED CONCRETE OVERLAY (1 1/4" THICK), AS PER PLAN.

## SCUPPER DETAILS



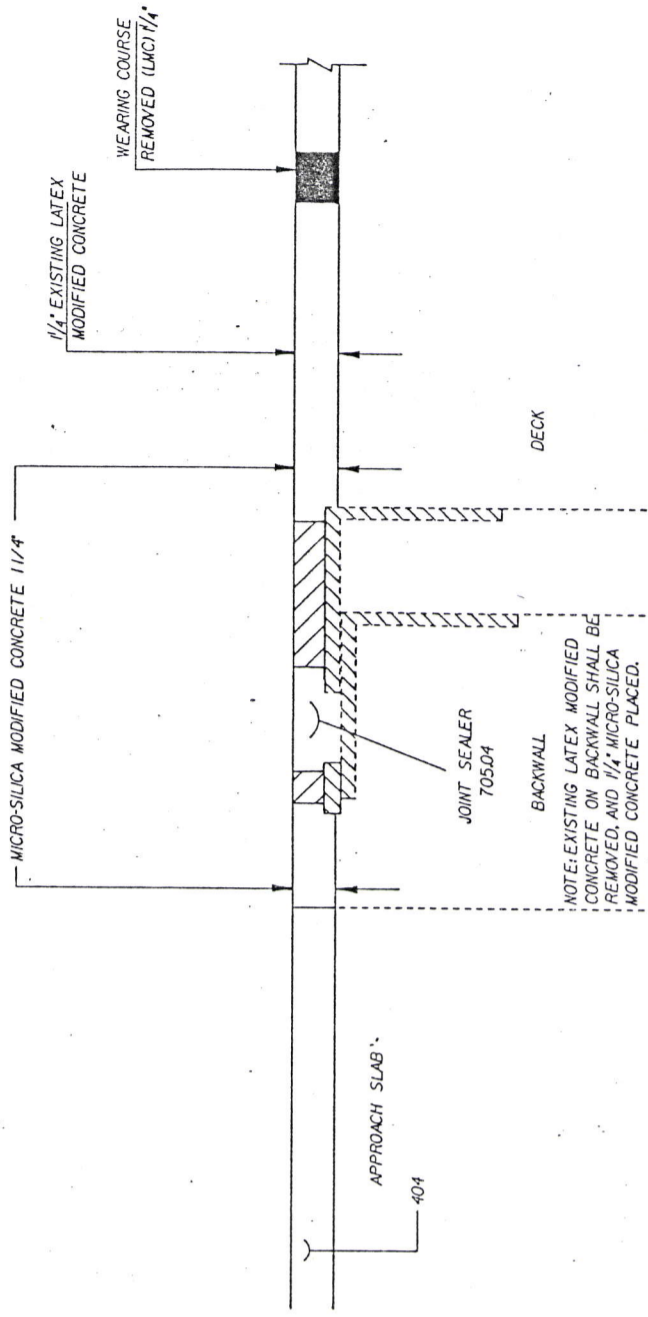
X 26'-07"-44" FORWARD ABUTMENT  
 38'-06"-03" REAR ABUTMENT

## TYPICAL ASPHALT APPROACHES (TYPICAL ALL FOUR CORNERS)



## TYPICAL DECK SECTIONS

STRUCTURE INFORMATION					
BRIDGE NO.	SKEW	ALIGNMENT	BRIDGE LIMITS	WIDTH	SUPERELEVATION
GAL-35-1743	31°54'-40' LT FWD.	4°54' RT CURVE	256.86'	44'-0"	0.083



## LIMITS OF MICRO-SILICA MODIFIED CONCRETE OVERLAY

DESIGNED BY JLT  
 CHECKED BY JDC  
 REVIEWED BY

BRIDGE REPAIR DETAILS GAL-35-17.43

GAL-US35-17.43

5



# PAVEMENT MARKING SUB-SUMMARY

PLAN NO.

LOG POINT		PAGE	ITEM 644		ITEM 642		ITEM 614																			
			EDGE LINE	LANE LINE	TEMPORARY EDGE LINE CLASS 1,74005 TYPE C	MILE	MILE	MILE																		
17.21 - 17.65			0.14	0.058	0.60																					

GAL-US35-17.43

5  
4

PAVEMENT MARKING



# GENERAL SUMMARY

PLAN NO.

PART	ITEM	ITEM EXT	GRAND TOTAL	UNIT	DESCRIPTION
1507	202	23500	1507	SQUARE YARD	WEARING COURSE REMOVED
9	202	54100	9	EACH	RAISED PAVEMENT MARKERS REMOVED FOR STORAGE
17	407	10000	17	GALLON	TACK COAT
12	448	16000	12	CUBIC YARD	ASPHALT CONCRETE SURFACE COURSE,TYPE 1,AC-20
0.60	614	22300	0.60	MILE	TEMPORARY EDGE LINE, CLASS 1, 740.05, TYPE C
0.56	614	98000	0.56	MILE	TEMPORARY PAVEMENT MARKINGS
0.14	642	00102	0.14	MILE	EDGE LINE,TYPE 2,740.02
0.068	642	00202	0.068	MILE	LANE LINE,TYPE 2,740.02
32	802	00101	32	EACH	BARRIER REFLECTOR,TYPE A,AS PER PLAN
8	802	00200	8	EACH	BARRIER REFLECTOR,TYPE B
1166	SPECIAL	51922000	1166	SQUARE YARD	MICRO-SILICA MODIFIED CONCRETE OVERLAY (1/4" THICK),AS PER PLAN
76	SPECIAL	51922100	76	CUBIC YARD	MICRO-SILICA MODIFIED CONCRETE OVERLAY (VARIABLE THICKNESS)
LUMP	614	11000	LUMP	LUMP	MAINTAINING TRAFFIC
LUMP	624	10000	LUMP	LUMP	MOBILIZATION

**FIG:**  
 ic shall be maintained at all times.The  
 of restricted traffic zones shall be  
 o a minimum consistent with the  
 igation requirements for protection of  
 eted courses.

**INTERMEDIATE COURSE, SPOT LEVELING AND  
 PATCHING:**  
 This material shall be placed in a separate  
 operation where and as directed by the  
 engineer.

**ROAD CROSSINGS & BRIDGE TREATMENT:**  
 ew surface course shall be feathered or  
 igned to meet the profile as specified  
 Engineer.

**TACK COAT:**  
 The rate of application of tack coat shall be  
 subject to adjustment, as directed by the  
 Engineer. Plan quantities indicate an average  
 application rate of 0.45 liters per sq. meter for  
 estimating purposes only.

**MENT AND PROFILE:**  
 ork proposed by this project is for the  
 facing of the existing pavement. The  
 ent of the existing pavement will not  
 nged, and the profile of the proposed  
 ce will be similar to that of the existing  
 ent except that it will be raised an  
 equal to the thickness of the  
 facing course or courses specified in  
 plans.