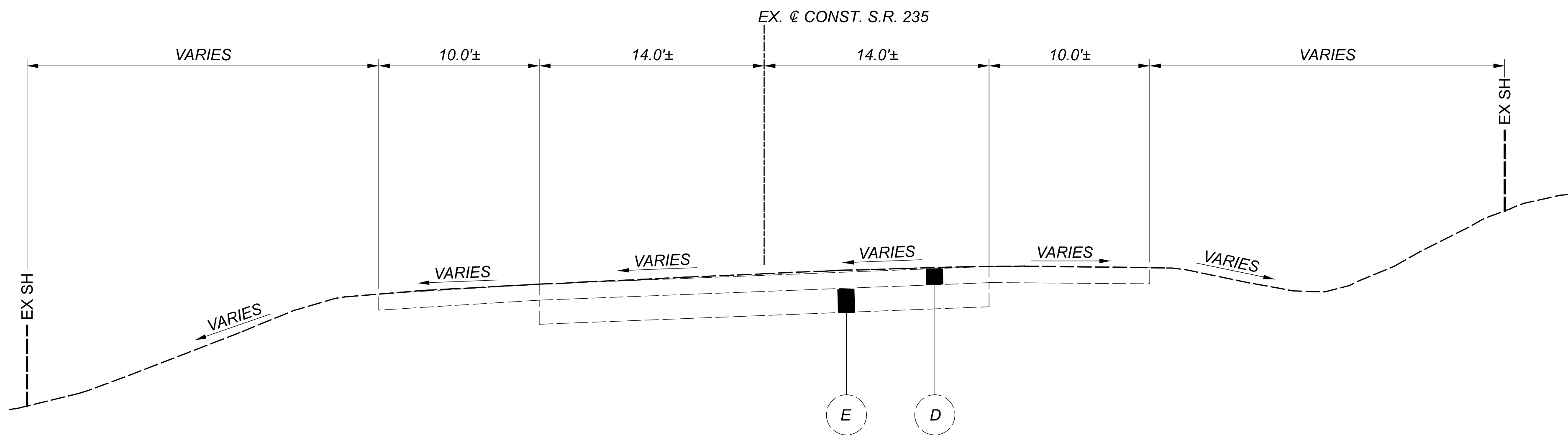


EXISTING TYPICAL SECTION U.S. ROUTE 68  
 STA. 197+54.37 TO STA. 207+10.10

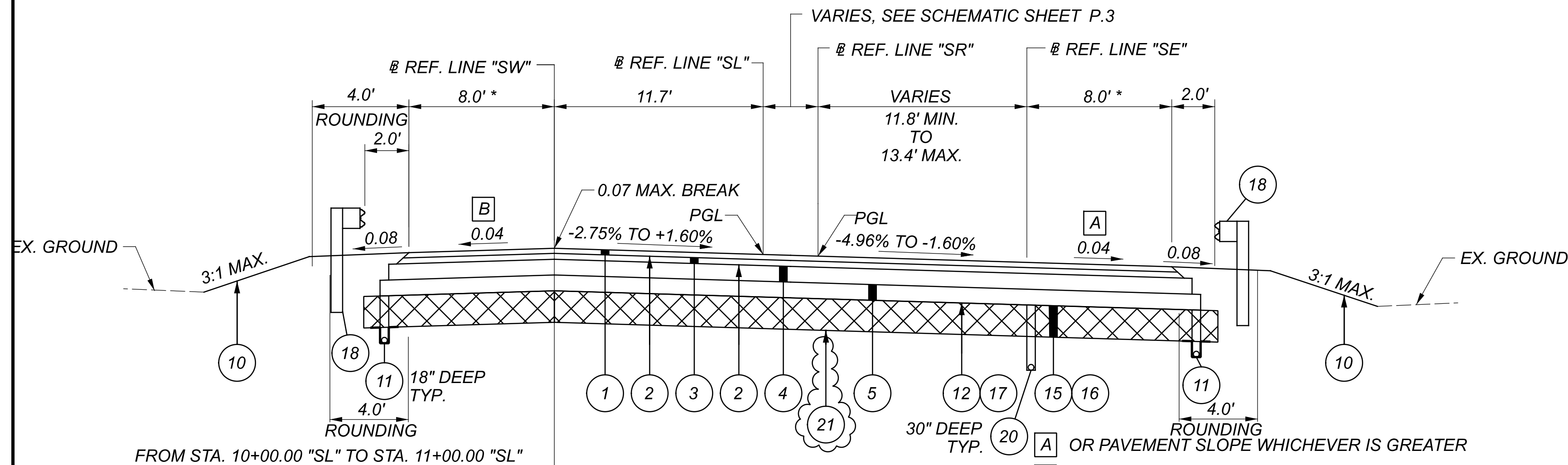


EXISTING TYPICAL SECTION S.R. 235 (E. XENIA DRIVE)  
 STA. 110+00.00 TO STA. 114+14.03

LEGEND

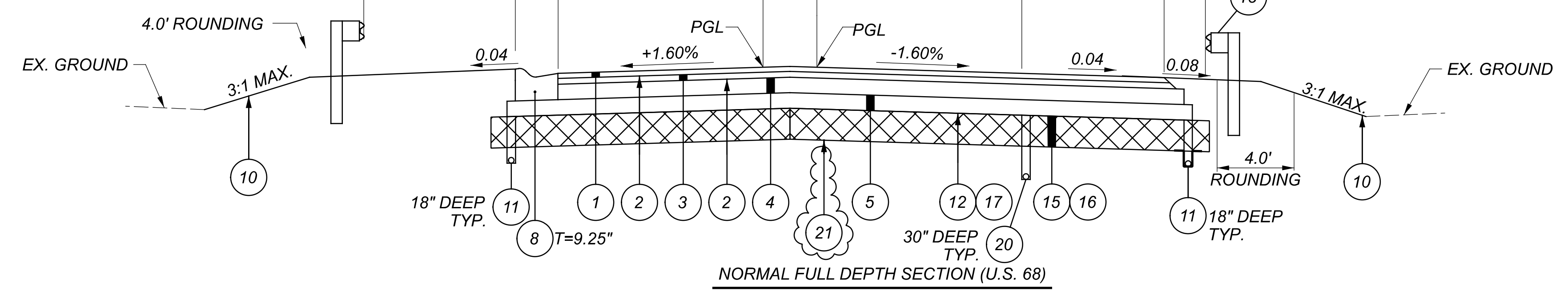
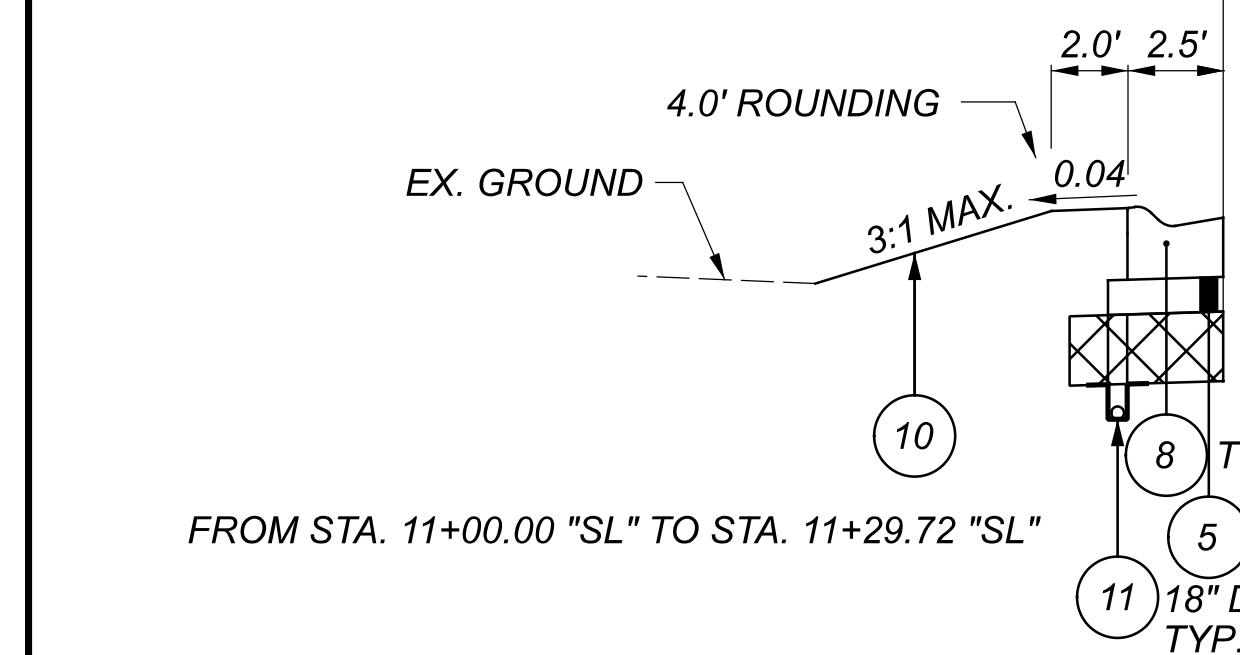
- 1 ITEM 442 - 1.5" ASPHALT CONCRETE SURFACE COURSE, 12.5MM, TYPE A (446), PG76-22M
- 2 ITEM 407 - NON-TRACKING TACK COAT
- 3 ITEM 442 - 1.75" ASPHALT CONCRETE INTERMEDIATE COURSE, 19MM, TYPE A (446)
- 4 ITEM 301 - 6" ASPHALT CONCRETE BASE, PG64-22, (449)
- 5 ITEM 304 - 6" AGGREGATE BASE
- 6 ITEM 609 - COMBINATION CURB & GUTTER, TYPE 9
- 7 ITEM 609 - CURB, TYPE 10
- 8 ITEM 609 - COMBINATION CURB & GUTTER, TYPE 3
- 9 ITEM 452 - 10" NON-REINFORCED CONCRETE PAVEMENT, CLASS QC 1P
- 10 ITEM 659 - SEEDING AND MULCHING
- 11 ITEM 605 - 4" BASE PIPE UNDERDRAINS WITH GEOTEXTILE FABRIC, AS PER PLAN
- 12 ITEM 204 - PROOF ROLLING
- 13 ITEM 203 - EMBANKMENT
- 14 ITEM 609 - CURB, TYPE 4-C
- 15 ITEM 204 - EXCAVATION OF SUBGRADE, 12"
- 16 ITEM 204 - GRANULAR MATERIAL, TYPE C
- 17 ITEM 204 - SUBGRADE COMPACTION
- 18 ITEM 606 - GUARDRAIL, TYPE MGS WITH LONG POSTS
- 19 ITEM 609 - COMBINATION CURB & GUTTER, TYPE 9, AS PER PLAN
- 20 ITEM 605 - 4" SHALLOW PIPE UNDERDRAINS WITH GEOTEXTILE FABRIC, AS PER PLAN
- 21 ITEM 204 - GEOTEXTILE FABRIC

- A 4" EX. ASPHALT CONCRETE
- B 3"-6" EX. CONCRETE BASE
- C 0"-6" EX. AGGREGATE BASE
- D 4"-12" EX. ASPHALT CONCRETE
- E 0"-10" EX. AGGREGATE BASE



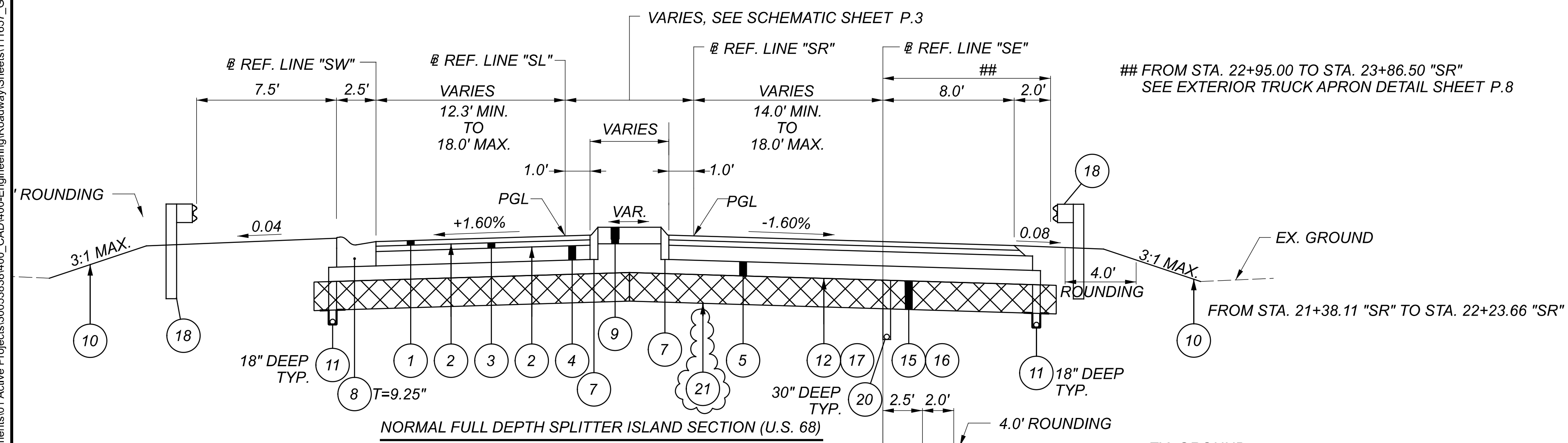
**SUPER-ELEVATED FULL DEPTH SECTION (U.S. 68)**

FROM STA. 10+00.00 "SL" TO STA. 11+29.72 "SL"  
 FROM STA. 20+00.00 "SR" TO STA. 21+00.19 "SR"



**NORMAL FULL DEPTH SECTION (U.S. 68)**

FROM STA. 11+29.72 "SL" TO STA. 11+70.82 "SL"  
 FROM STA. 21+00.19 "SR" TO STA. 21+38.11 "SR"



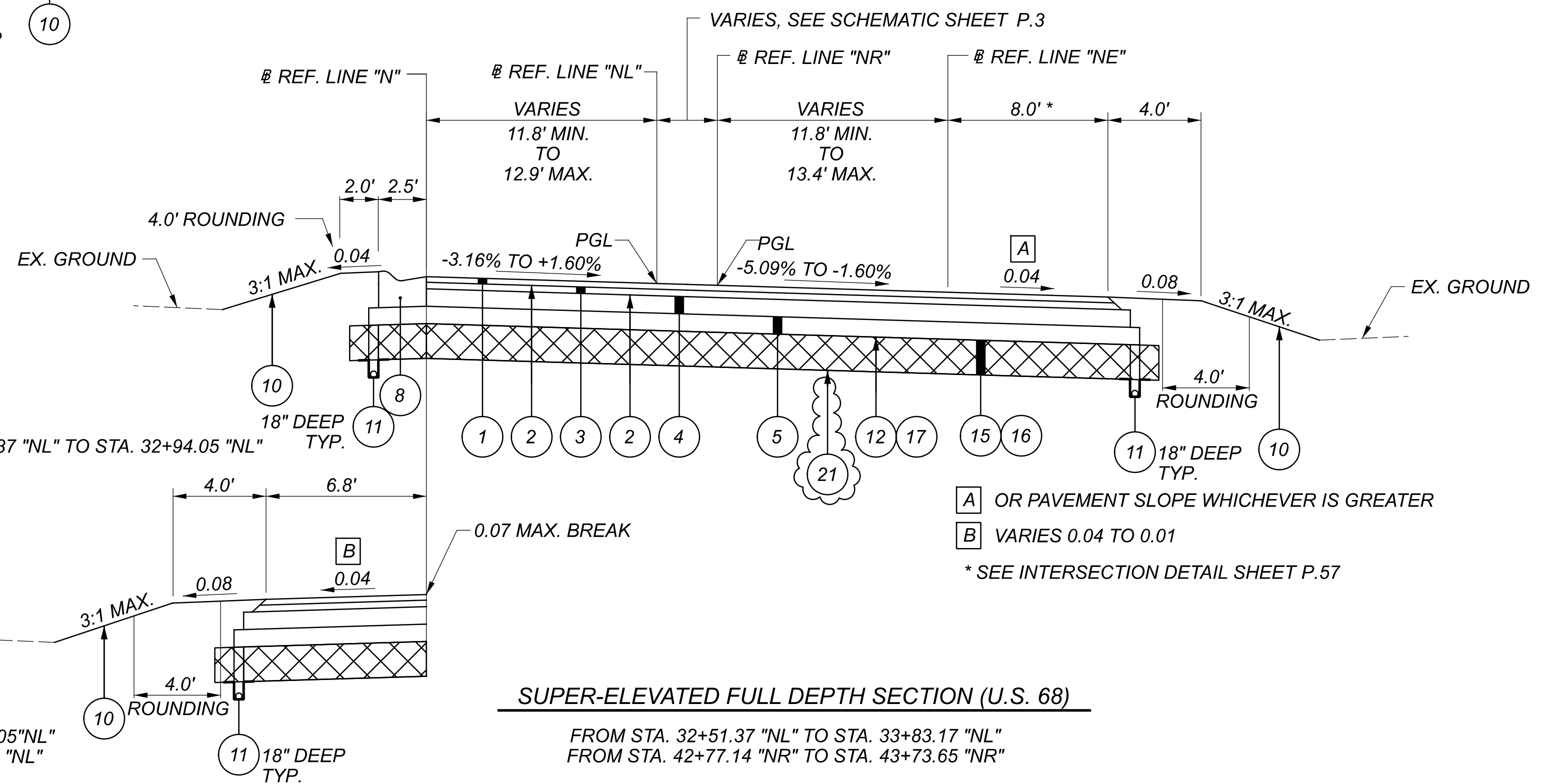
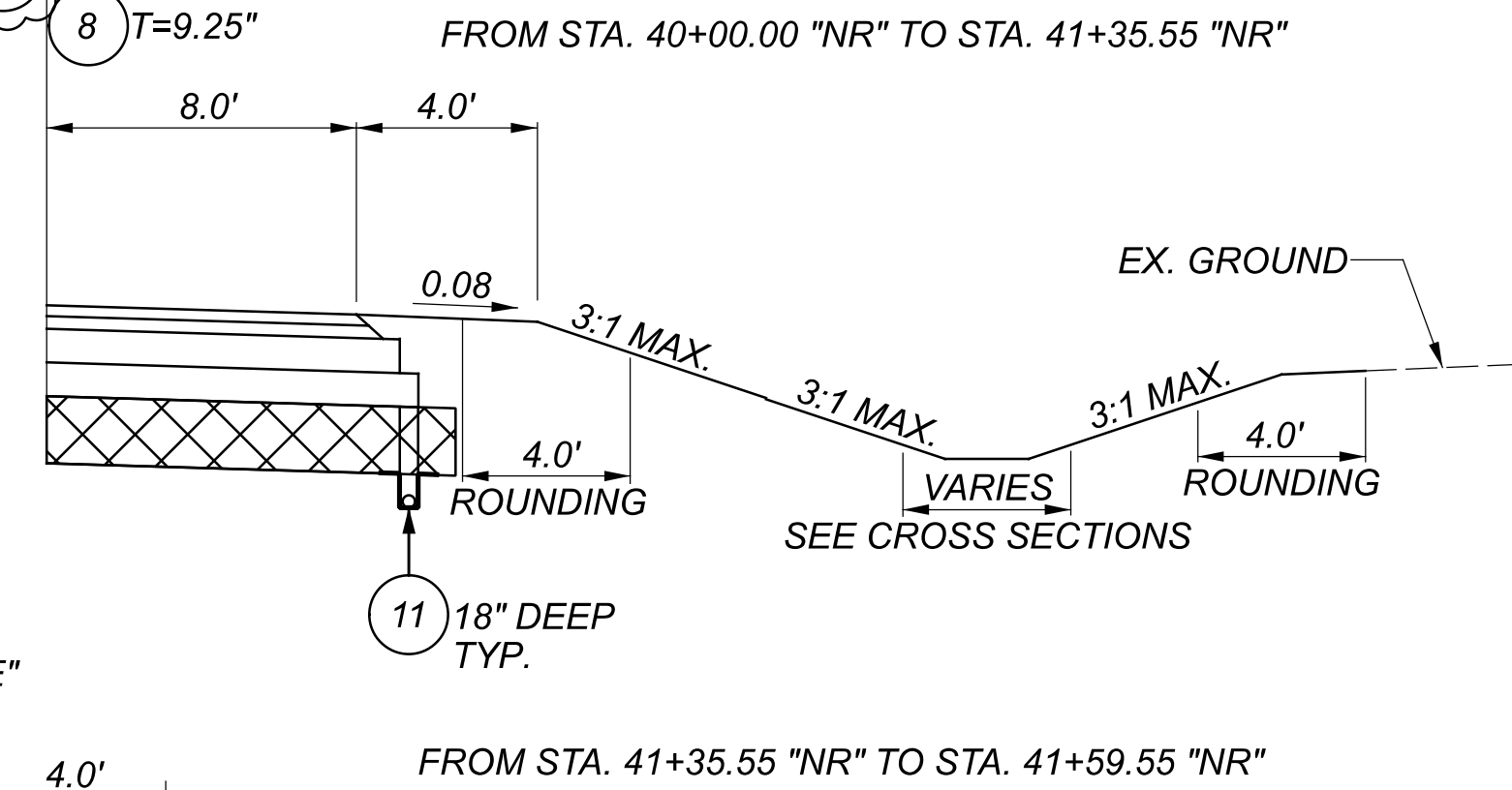
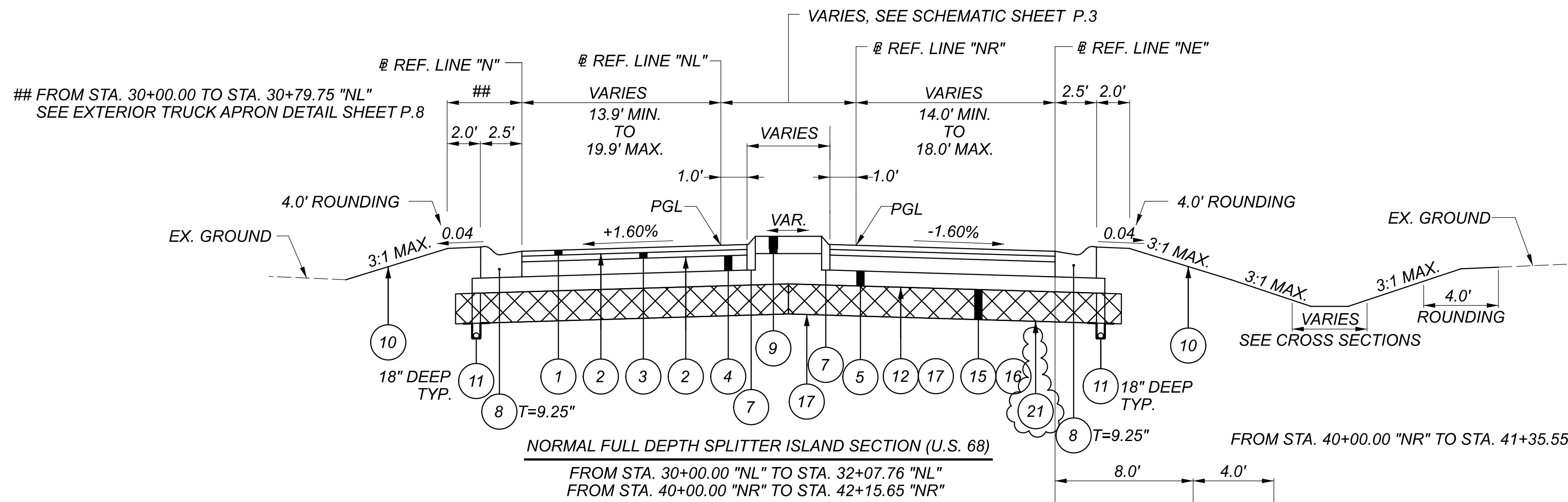
**NORMAL FULL DEPTH SPLITTER ISLAND SECTION (U.S. 68)**

FROM STA. 11+70.82 "SL" TO STA. 14+13.92 "SL"  
 FROM STA. 21+38.11 "SR" TO STA. 23+92.47 "SR"

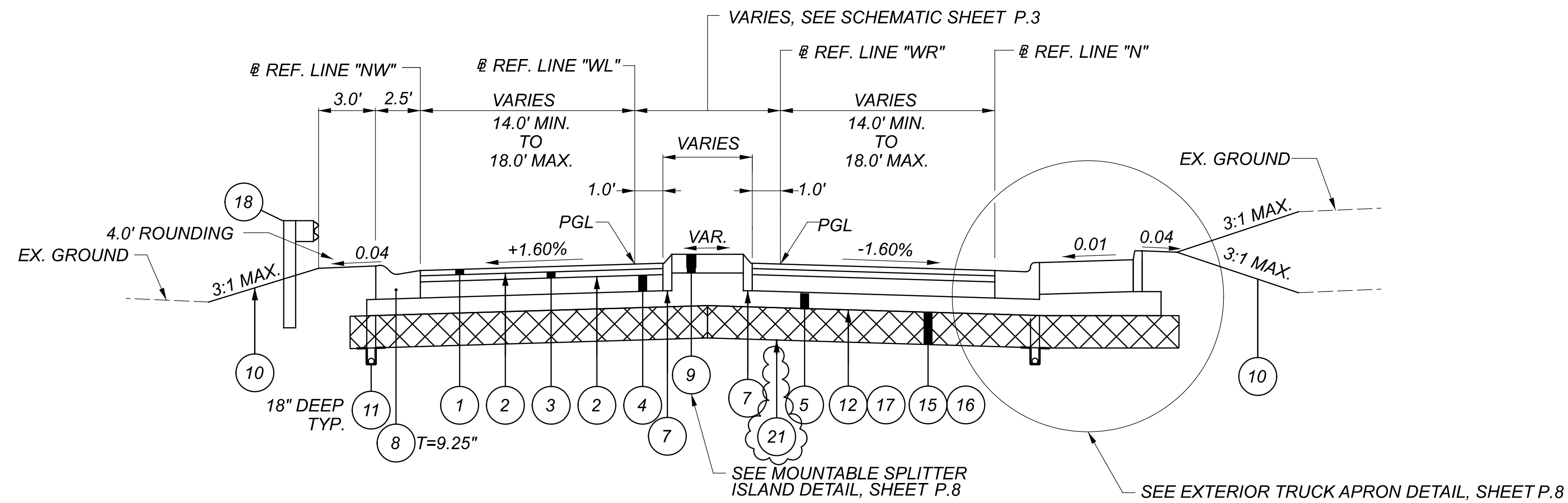
FROM STA. 22+23.66 "SR" TO STA. 23+92.47 "SR"

- NOTES:
- 1.) FOR TYPICAL LEGEND SEE SHEET P.4
  - 2.) FOR SHOULDER STEP DETAIL SEE SHEET P.8
  - 3.) FOR CURB AND GUTTER STEP DETAIL SEE SHEET P.8
  - 4.) SEE PAVEMENT DETAILS ON SHEETS P.56 AND P.57

DESIGN AGENCY	
ARCADIS	
110 E CALIFORNIA AVENUE SUITE 200 COLUMBIA, MD 21046-3225 6814 3829100 www.arcadis.com	
DESIGNER	
CAJ	
REVIEWER	
MAH 07/19/22	
PROJECT ID	
111657	
SHEET	TOTAL
P.5	94

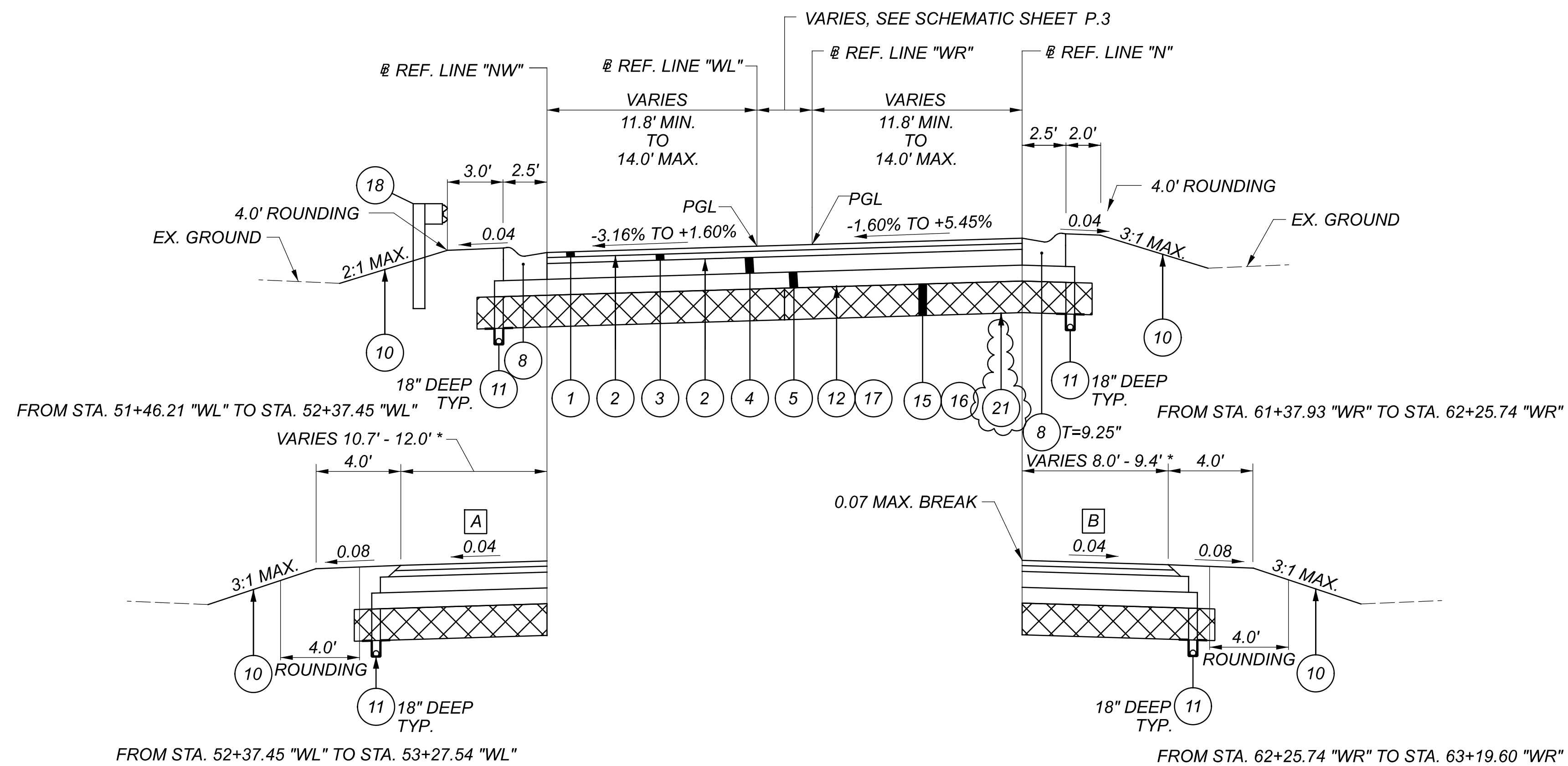


- NOTES:
- 1.) FOR TYPICAL LEGEND SEE SHEET P.4
  - 2.) FOR SHOULDER STEP DETAIL SEE SHEET P.8
  - 3.) FOR CURB AND GUTTER STEP DETAIL SEE SHEET P.8
  - 4.) SEE PAVEMENT DETAILS ON SHEETS P.56 AND P.57



**NORMAL FULL DEPTH SPLITTER ISLAND SECTION (S.R. 235)**

FROM STA. 50+00.00 "WL" TO STA. 51+46.21 "WL"  
 FROM STA. 60+00.00 "WR" TO STA. 61+37.93 "WR"



**SUPER-ELEVATED FULL DEPTH SECTION (S.R. 235)**

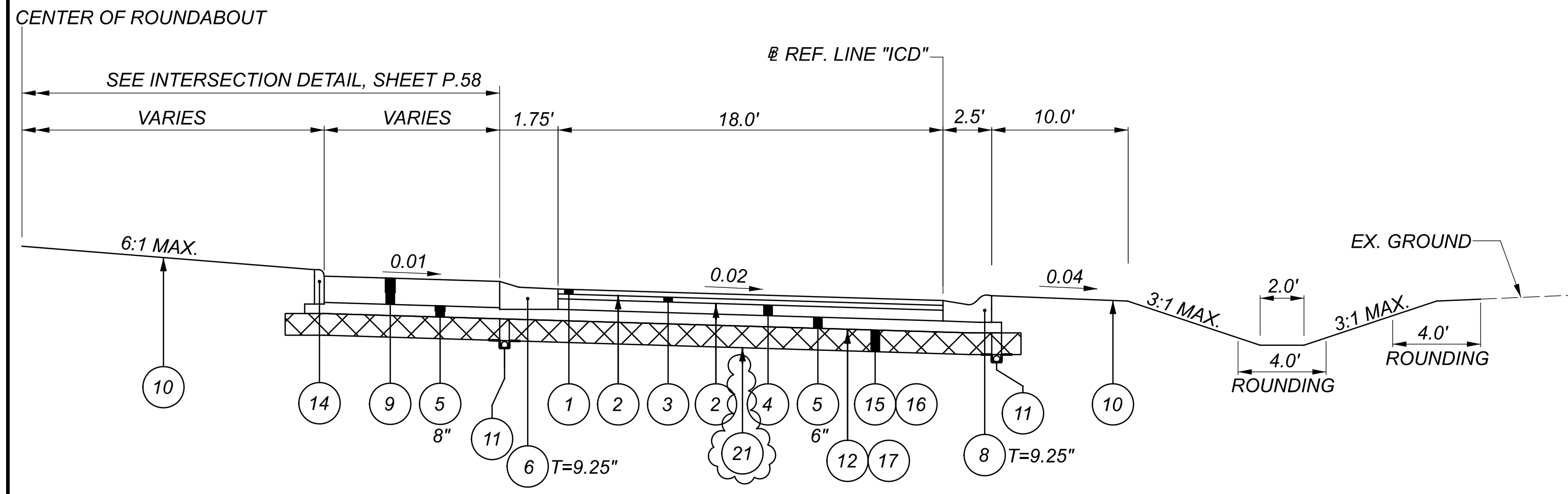
FROM STA. 51+46.21 "WL" TO STA. 53+27.54 "WL"  
 FROM STA. 61+37.93 "WR" TO STA. 63+19.60 "WR"

**A** OR PAVEMENT SLOPE WHICHEVER IS GREATER

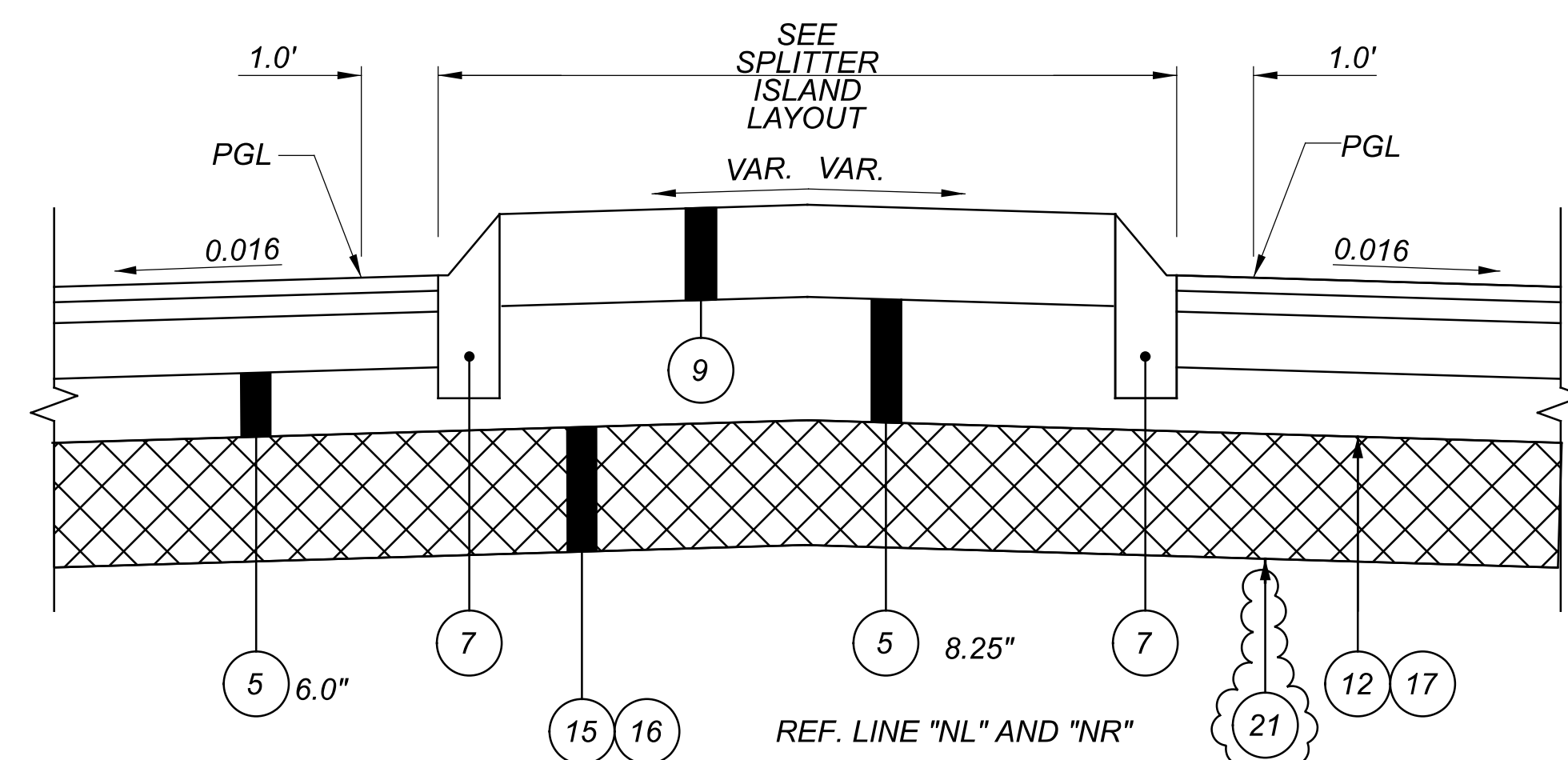
**B** VARIES 0.04 TO 0.01

\* SEE INTERSECTION DETAIL SHEET P.51

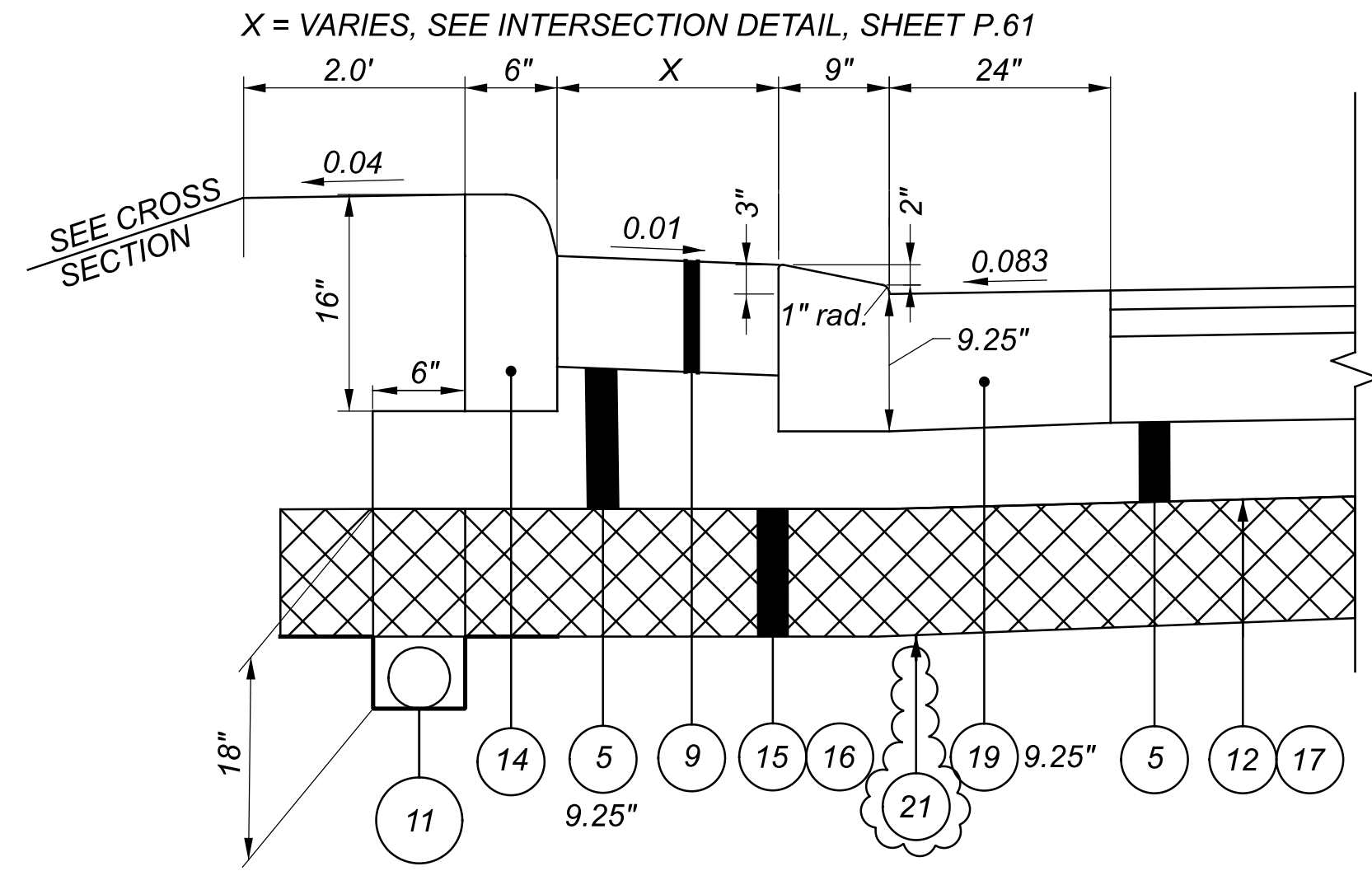
- NOTES:  
 1.) FOR TYPICAL LEGEND SEE SHEET P.4  
 2.) FOR SHOULDER STEP DETAIL SEE SHEET P.8  
 3.) FOR CURB AND GUTTER STEP DETAIL SEE SHEET P.8



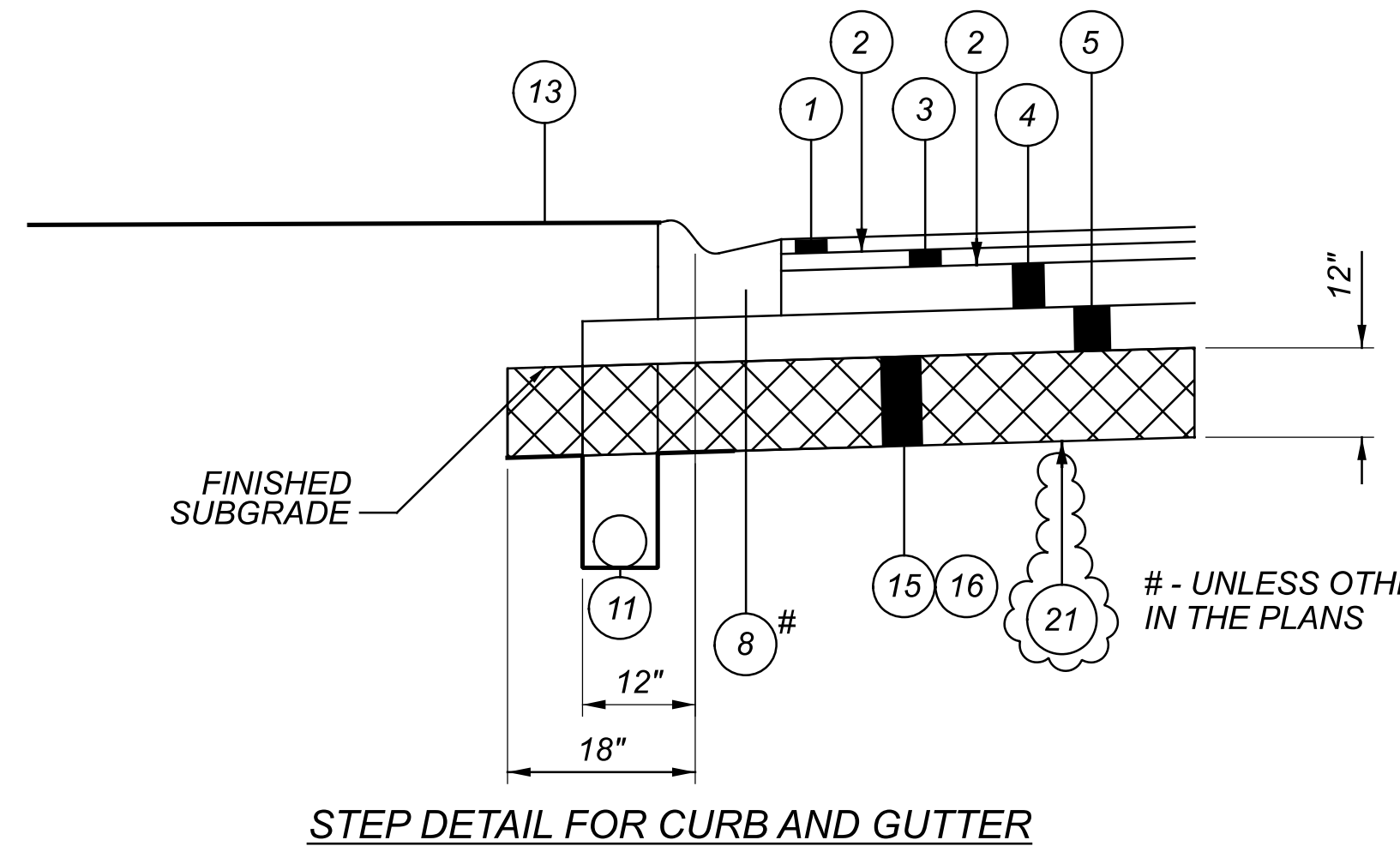
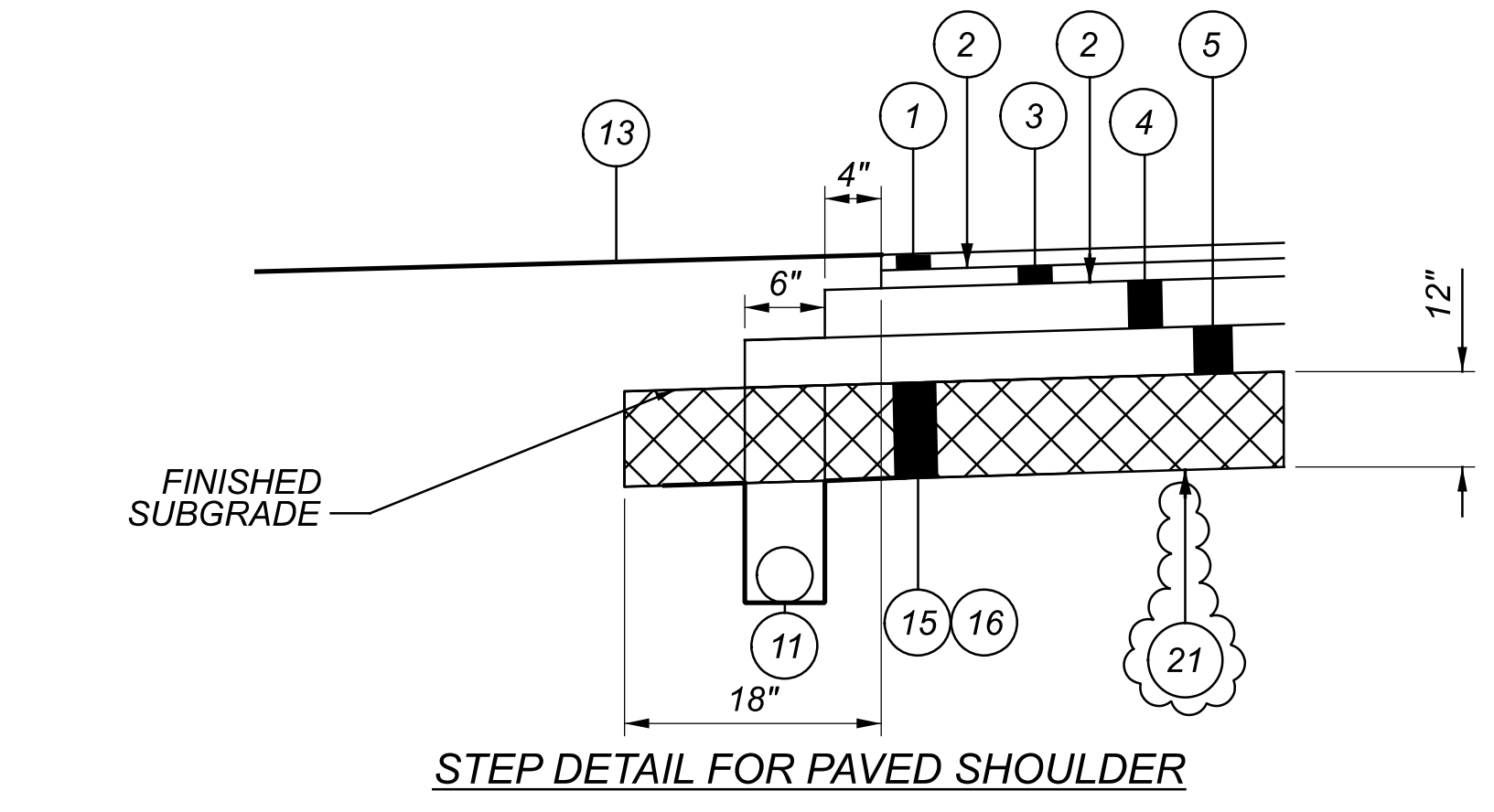
INSCRIBED CIRCLE "ICD"



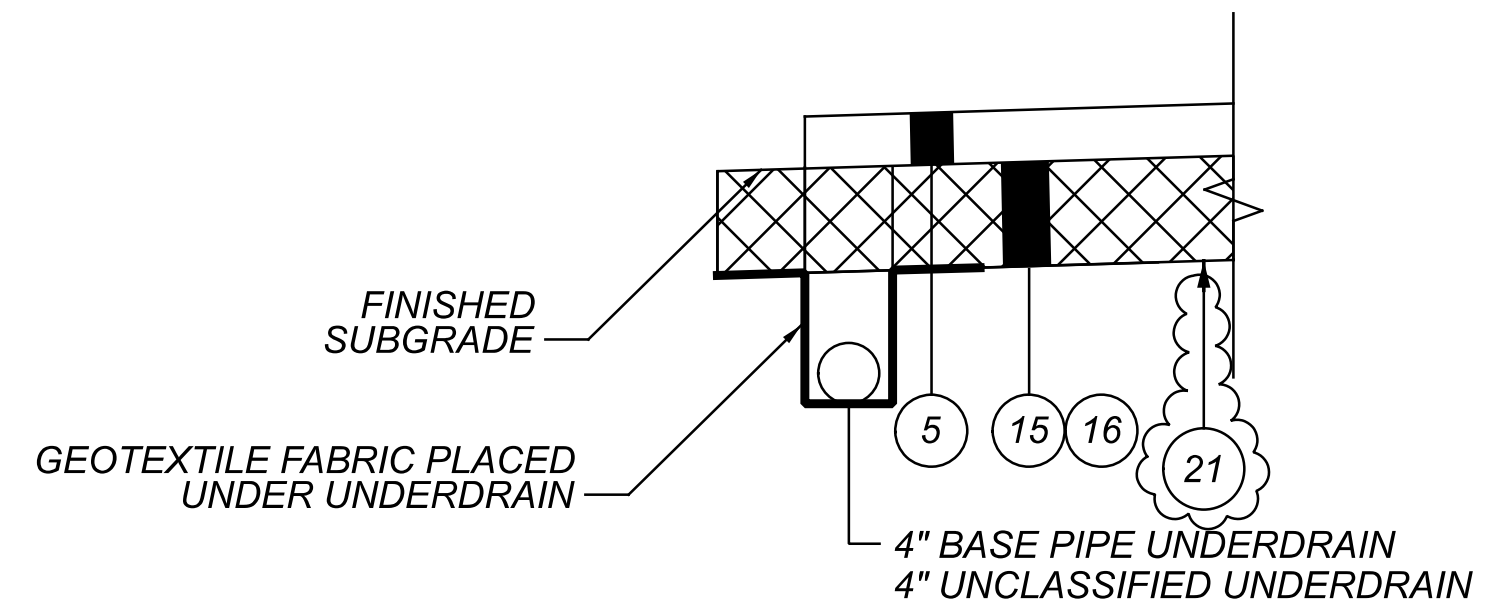
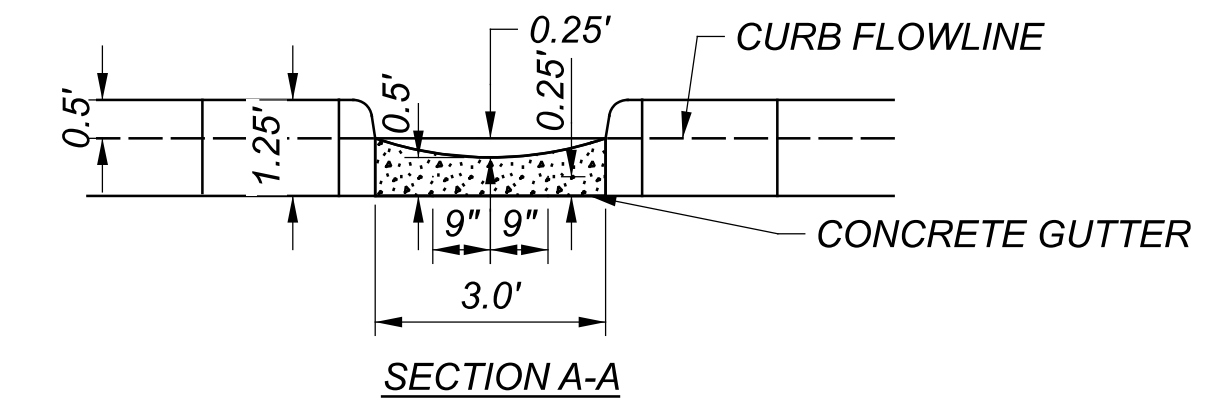
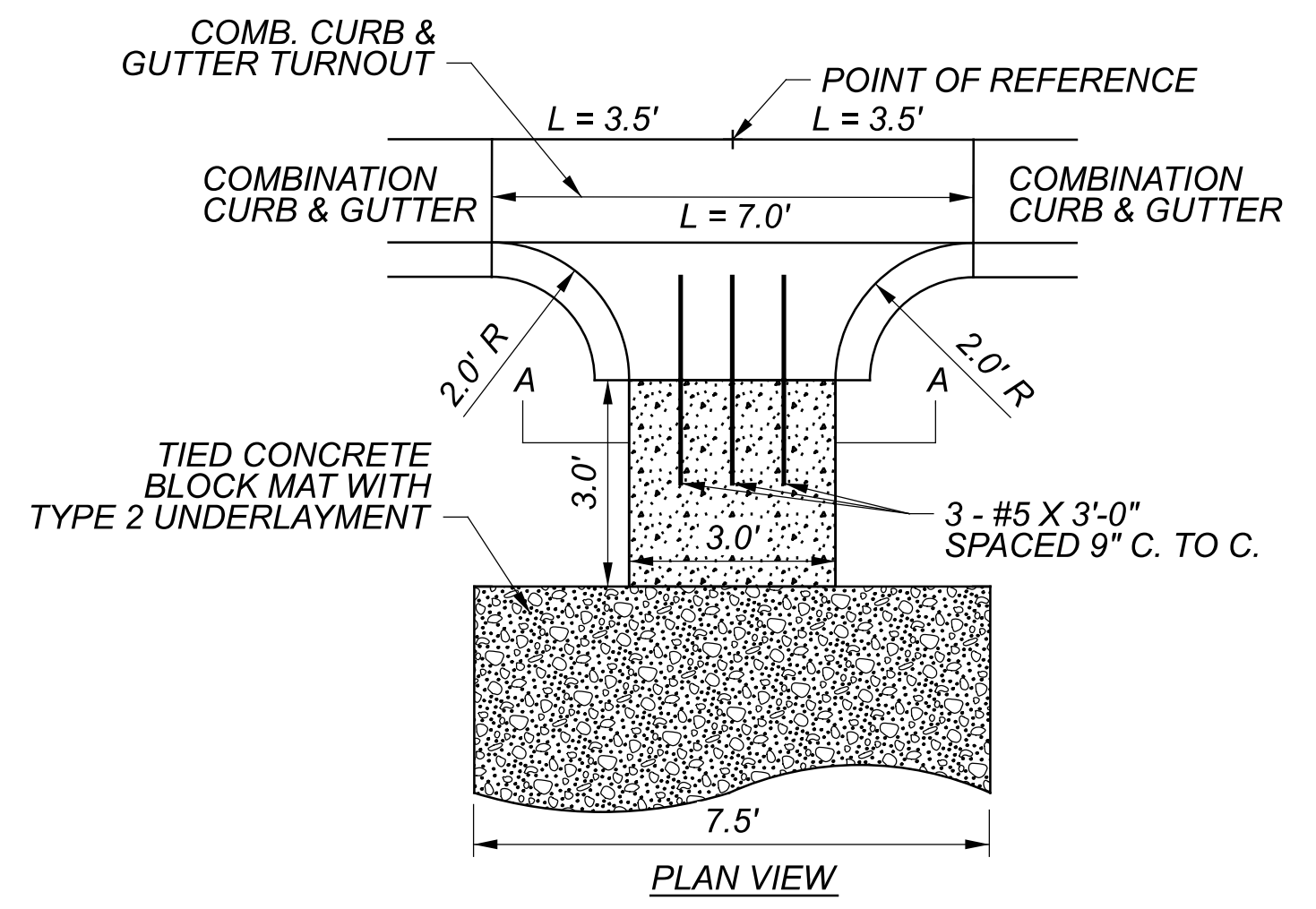
**MOUNTABLE SPLITTER ISLAND DETAIL**  
 FROM STA. 11+70.82 "SL" TO STA. 14+27.49 "SL"  
 FROM STA. 21+38.11 "SR" TO STA. 23+92.47 "SL"  
 FROM STA. 30+00.00 "NL" TO STA. 32+05.76 "NL"  
 FROM STA. 40+00.00 "NR" TO STA. 42+13.65 "NR"  
 FROM STA. 50+00.00 "WL" TO STA. 51+46.21 "WL"  
 STA. 60+00.00 "WR" TO STA. 61+37.93 "WR"



EXTERIOR TRUCK APRON DETAIL



# - UNLESS OTHERWISE SPECIFIED IN THE PLANS



**ITEM 605 - 4" BASE PIPE UNDERDRAIN WITH GEOTEXTILE FABRIC, AS PER PLAN**  
**ITEM 605 - 4" UNCLASSIFIED PIPE UNDERDRAIN WITH GEOTEXTILE FABRIC, AS PER PLAN**

**ITEM 609 - CURB MISC.: COMBINATION CURB AND GUTTER TURNOUT**  
 THIS ITEM SHALL BE CONSTRUCTED AS PER DETAILS SHOWN ABOVE. THE ROCK CHANNEL PROTECTION SHALL EXTEND TO THE DITCH BOTTOM. WHEN THE TURNOUT IS AT THE END OF THE CURB AND GUTTER LINE, CONSTRUCT 2.0' RADIUS AND 3.0' CONCRETE GUTTER WHILE OMITTING THE 2.0' RADIUS ON THE PAVED SHOULDER SIDE. ALL LABOR, MATERIALS, AND INCIDENTALS NECESSARY TO CONSTRUCT A COMPLETE TURNOUT SHALL BE INCLUDED IN THE UNIT PRICE BID FOR ITEM 609 - CURB MISC.: COMBINATION CURB AND GUTTER TURNOUT. PAYMENT FOR THE TIED CONCRETE BLOCK MAT WITH TYPE 2 UNDERLAYMENT SHALL BE MADE SEPARATELY FROM THIS ITEM.

NOTES:  
 1.) FOR TYPICAL LEGEND SEE SHEET P.4

**ITEM 614, DETOUR SIGNING**

ALL WORK ZONE TRAFFIC CONTROL DEVICES REQUIRED FOR THE DETOUR FURNISHED, ERECTED, MAINTAINED AND SUBSEQUENTLY REMOVED BY THE CONTRACTOR. THE FOLLOWING QUANTITY HAS BEEN CARRIED TO THE GENERAL SUMMARY:

ITEM 614, DETOUR SIGNING

**NOTIFICATION OF TRAFFIC RESTRICTIONS**

THROUGHOUT THE DURATION OF THE PROJECT, THE CONTRACTOR SHALL NOTIFY THE PROJECT ENGINEER IN WRITING OF ALL TRAFFIC RESTRICTIONS AND UPCOMING MAINTENANCE OF TRAFFIC CHANGES. THE CONTRACTOR SHALL ENSURE THE WRITTEN NOTIFICATION IS SUBMITTED IN A TIMELY MANNER TO ALLOW THE PROJECT ENGINEER TO MEET THE REQUIRED TIME FRAMES SET FORTH IN THE TABLE BELOW TO INFORM THE SPECIAL HAULING PERMITS SECTION (HAULING.PERMITS@DOT.OHIO.GOV) AND THE DISTRICT PUBLIC INFORMATION OFFICE (PIO). THIS NOTIFICATION SHALL BE RECEIVED BY THE PROJECT ENGINEER PRIOR TO THE PHYSICAL SETUP OF ANY APPLICABLE SIGNS OR MESSAGE BOARDS.

INFORMATION SHOULD INCLUDE, BUT IS NOT LIMITED TO, ALL CONSTRUCTION ACTIVITIES THAT IMPACT OR INTERFERE WITH TRAFFIC AND SHALL LIST THE SPECIFIC LOCATION, TYPE OF WORK, ROAD STATUS, DATE AND TIME OF RESTRICTION, DURATION OF RESTRICTION, NUMBER OF LANES MAINTAINED, NUMBER OF LANES CLOSED, MINIMUM VERTICAL CLEARANCE, MINIMUM WIDTH OF DRIVABLE PAVEMENT, DETOUR ROUTES, IF APPLICABLE, AND ANY OTHER INFORMATION REQUESTED BY THE PROJECT ENGINEER.

NOTIFICATION TIME TABLE		
ITEM	DURATION OF CLOSURE	NOTICE DUE TO PERMITS & PIO
RAMP & ROAD CLOSURES	>= 2 WEEKS	21 CALENDAR DAYS PRIOR TO CLOSURE
	> 12 HOURS & < 2 WEEKS	14 CALENDAR DAYS PRIOR TO CLOSURE
	< 12 HOURS	4 BUSINESS DAYS PRIOR TO CLOSURE
LANE CLOSURES & RESTRICTIONS	>= 2 WEEKS	14 CALENDAR DAYS PRIOR TO CLOSURE
	< 2 WEEKS	5 BUSINESS DAYS PRIOR TO CLOSURE
START OF CONSTRUCTION & TRAFFIC PATTERN CHANGES	N/A	14 CALENDAR DAYS PRIOR TO CLOSURE

ANY UNFORESEEN CONDITIONS NOT SPECIFIED IN THE PLANS REQUIRING TRAFFIC RESTRICTIONS SHALL ALSO BE REPORTED TO THE PROJECT ENGINEER USING THE NOTIFICATION TIME TABLE.

**FULLY-ACTUATED OPERATION OF WORK ZONE TRAFFIC SIGNAL**

THE WORK ZONE SIGNAL CONTROL REQUIRED FOR THIS PROJECT AND SHOWN ON SHEET P.17 AND TRAFFIC SCDS MT-96.11, 96.20 AND 96.26 SHALL BE FULLY TRAFFIC-ACTUATED AND OPERATE IN A MANNER SIMILAR TO THAT DESCRIBED IN SECTION 733.02 OF THE CONSTRUCTION AND MATERIAL SPECIFICATIONS.

THE INITIAL CONTROLLER TIMING SHALL BE AS FOLLOWS:

	PHASE																				
	1			2			3			4			5			6			7		
	MAINLINE (NB)			MAINLINE (SB)			DRIVE 1			DRIVE 2			DRIVE 5			DRIVE 6			DRIVE SOUTH OF PROJECT		
INTERVAL	1	2	3	1	2	3	1	2	3	1	2	3	1	2	3	1	2	3	1	2	3
MIN. GREEN	15			15			7			10			7			7			7		
EXTENSION	4			4																	
MAX. GREEN	42			42			7			10			7			7			7		
YELLOW		3			3			3			3			3			3			3	
ALL RED			45			45			32			28			33			35			45
RECALL	ON			OFF			OFF			OFF			OFF			OFF			OFF		

THE CONTRACTOR SHALL ALSO DESIGN, FURNISH, INSTALL AND MAINTAIN A TRAFFIC DETECTOR ON EACH TRAFFIC APPROACH WHICH WILL RELIABLY DETECT ALL LEGAL TRAFFIC APPROACHING (BUT NOT LEAVING) THE SIGNAL AS IT PASSES OR WAITS IN THE DESIGNATED DETECTOR ZONE SHOWN IN THE PLANS. DETECTOR DESIGNS WHICH DO NOT PROVIDE RELIABLE DETECTION, FREE FROM FALSE CALLS, SHALL BE IMMEDIATELY REPLACED BY THE CONTRACTOR.

THE TEMPORARY DRIVE SIGNALS MUST BE LINKED TO THE MAIN TEMPORARY TRAFFIC SIGNAL SYSTEM.

**OVERHEAD-MOUNTED WORK ZONE SIGNALS**

SIGNALS ON US-68 SHALL BE OVERHEAD MOUNTED IN ACCORDANCE WITH THE DETAILS SHOWN ON TRAFFIC SCD MT-96.20.

DRIVEWAY SIGNALS MAY BE OVERHEAD OR SIDE MOUNTED. THE DRIVEWAY SIGNAL AT STATION 203+32 SHALL BE TEMPORARY SIGNALS.

**WORK ZONE MARKINGS**

THE FOLLOWING ESTIMATED QUANTITIES HAVE BEEN CARRIED TO THE GENERAL SUMMARY FOR USE AT LOCATIONS IDENTIFIED BY THE ENGINEER FOR WORK ZONE PAVEMENT MARKINGS AND SIGNS PER THE REQUIREMENTS OF C&MS 614.04 AND 614.11.

ITEM 614, WORK ZONE EDGE LINE, CLASS I, 642 PAINT, 4"	1.20 MI
ITEM 614, WORK ZONE CENTERLINE, CLASS I, 642 PAINT, 4"	0.36 MI
ITEM 614, STOP LINE, CLASS I, 642 PAINT, 24"	25 FT

**ESTIMATED QUANTITIES**

THE FOLLOWING ESTIMATED QUANTITIES HAVE BEEN CARRIED TO THE GENERAL SUMMARY FOR USE AS DETERMINED BY THE ENGINEER FOR THE MAINTENANCE OF TRAFFIC.

ITEM 410, TRAFFIC COMPACTED SURFACE, TYPE A OR B	75 CY
ITEM 614, WORK ZONE IMPACT ATTENUATOR	13 EA
ITEM 614, WORK ZONE RAISED PAVEMENT MARKER	89 EA
ITEM 615, PAVEMENT FOR MAINTAINING TRAFFIC, CLASS B	1410 SY
ITEM 622, PORTABLE BARRIER, UNANCHORED	2070 FT
ITEM 622, PORTABLE BARRIER, ANCHORED	510 FT

WINDOW CONTRACT TABLE				
DESCRIPTION OF CRITICAL WORK	DAYS TO COMPLETE	DISINCENTIVE \$ PER DAY	WORK WINDOW	
			START	END
SR 235 ALLOWABLE CLOSURE	160	\$11,000	NOTICE TO PROCEED	COMPLETION DATE

**ITEM 614, PORTABLE CHANGEABLE MESSAGE SIGNS, AS PER PLAN**

THE CONTRACTOR SHALL FURNISH, INSTALL, MAINTAIN AND REMOVE, WHEN NO LONGER NEEDED, A CHANGEABLE MESSAGE SIGN. THE SIGN SHALL BE OF A TYPE SHOWN ON A LIST OF APPROVED PCMS UNITS AVAILABLE ON THE OFFICE OF MATERIALS MANAGEMENT WEB PAGE. THE LIST CONTAINS CLASS A AND B UNITS WITH MINIMUM LEGIBILITY DISTANCES OF 800 FEET AND 650 FEET, RESPECTIVELY.

EACH SIGN SHALL BE TRAILER-MOUNTED AND EQUIPPED WITH A FUNCTIONAL DIMMING MECHANISM, TO DIM THE SIGN DURING DARKNESS, AND A TAMPER AND VANDAL PROOF ENCLOSURE. EACH SIGN SHALL BE PROVIDED WITH APPROPRIATE TRAINING AND OPERATION INSTRUCTIONS TO ENABLE ON-SITE PERSONNEL TO OPERATE AND TROUBLESHOOT THE UNIT. THE SIGN SHALL ALSO BE CAPABLE OF BEING POWERED BY AN ELECTRICAL SERVICE DROP FROM A LOCAL UTILITY COMPANY. THE PCMS SHALL BE DELINEATED IN ACCORDANCE WITH C&MS 614.03.

THE PROBABLE PCMS LOCATIONS AND WORK LIMITS FOR THOSE LOCATIONS ARE SHOWN ON SHEET OF THE PLAN. PLACEMENT, OPERATION, MAINTENANCE AND ALL ACTIVATION OF THE SIGNS BY THE CONTRACTOR SHALL BE AS DIRECTED BY THE ENGINEER. THE PCMS SHALL BE LOCATED IN A HIGHLY VISIBLE POSITION YET PROTECTED FROM TRAFFIC. THE CONTRACTOR SHALL, AT THE DIRECTION OF THE ENGINEER, RELOCATE THE PCMS TO IMPROVE VISIBILITY OR ACCOMMODATE CHANGED CONDITIONS. WHEN NOT IN USE, THE PCMS SHALL BE TURNED OFF. ADDITIONALLY, WHEN NOT IN USE FOR EXTENDED PERIODS OF TIME, THE PCMS SHALL BE TURNED AWAY FROM ALL TRAFFIC.

THE ENGINEER SHALL BE PROVIDED ACCESS TO EACH SIGN UNIT AND SHALL BE PROVIDED WITH APPROPRIATE TRAINING AND OPERATION INSTRUCTIONS TO ENABLE ODOT PERSONNEL TO OPERATE AND TROUBLESHOOT THE UNIT, AND TO REVISE SIGN MESSAGES, IF NECESSARY.

ALL MESSAGES TO BE DISPLAYED ON THE SIGN WILL BE PROVIDED BY THE ENGINEER. A LIST OF ALL REQUIRED PRE-PROGRAMMED MESSAGES WILL BE GIVEN TO THE CONTRACTOR AT THE PROJECT PRECONSTRUCTION CONFERENCE. THE SIGN SHALL HAVE THE CAPABILITY TO STORE UP TO 99 MESSAGES. MESSAGE MEMORY OR PRE-PROGRAMMED DISPLAYS SHALL NOT BE LOST AS A RESULT OF POWER FAILURES TO THE ON-BOARD COMPUTER. THE SIGN LEGEND SHALL BE CAPABLE OF BEING CHANGED IN THE FIELD. THREE-LINE PRESENTATION FORMATS WITH UP TO SIX MESSAGE PHASES SHALL BE SUPPORTED. PCMS FORMAT SHALL PERMIT THE COMPLETE MESSAGE FOR EACH PHASE TO BE READ AT LEAST TWICE.

THE PCMS SHALL CONTAIN AN ACCURATE CLOCK AND PROGRAMMING LOGIC WHICH WILL ALLOW THE SIGN TO BE ACTIVATED, DEACTIVATED OR MESSAGES CHANGED AUTOMATICALLY AT DIFFERENT TIMES OF THE DAY FOR DIFFERENT DAYS OF THE WEEK.

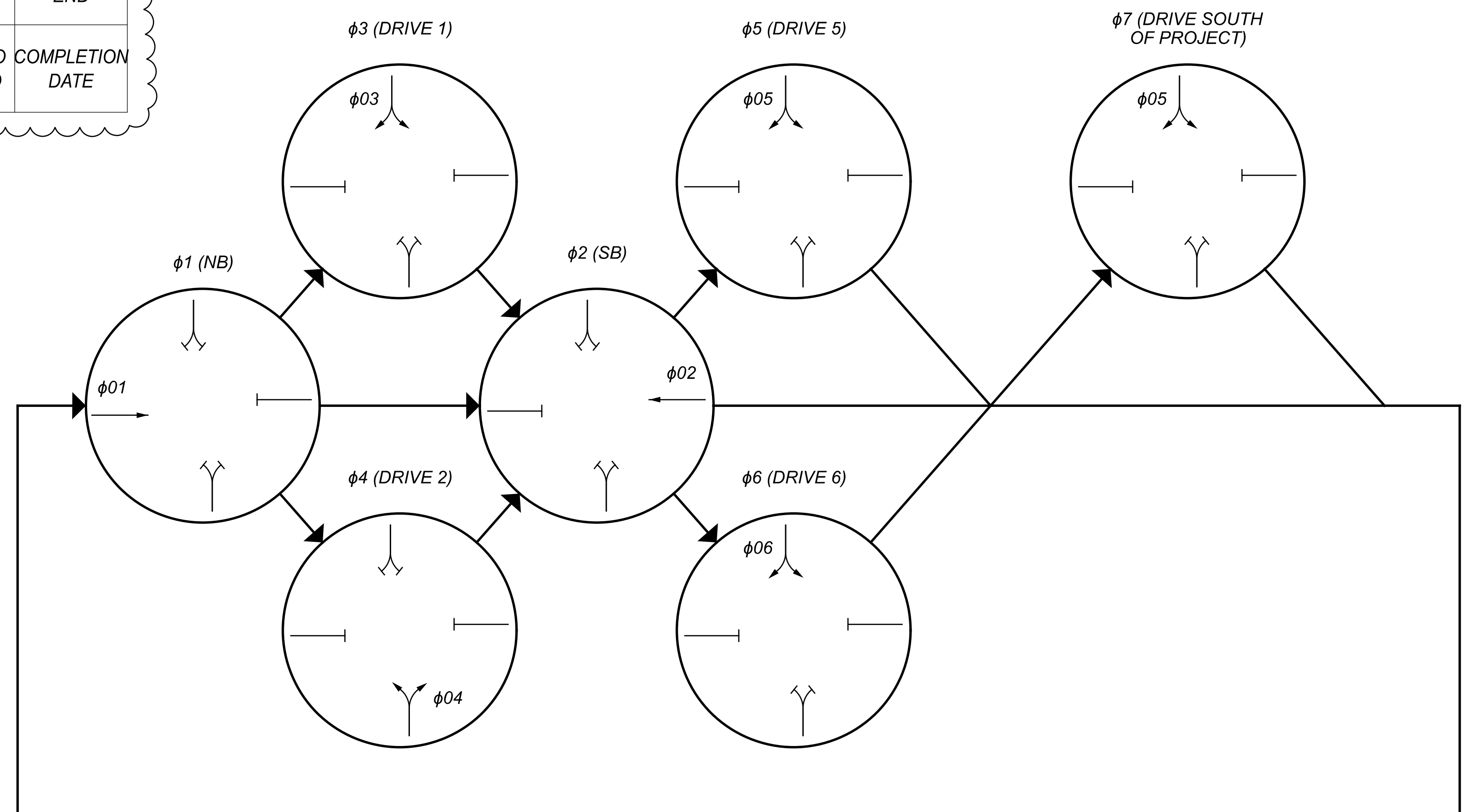
THE CONTRACTOR SHALL BE RESPONSIBLE FOR 24-HOUR-PER-DAY OPERATION AND MAINTENANCE OF THESE SIGNS ON THE PROJECT FOR THE DURATION OF THE PHASES WHEN THE PLAN REQUIRES THEIR USE.

PAYMENT FOR THE ABOVE DESCRIBED ITEM SHALL BE AT THE CONTRACT UNIT PRICE. PAYMENT SHALL INCLUDE ALL LABOR, MATERIALS, EQUIPMENT, FUELS, LUBRICATING OILS, SOFTWARE, HARDWARE AND INCIDENTALS TO PERFORM THE ABOVE DESCRIBED WORK.

ITEM 614, PORTABLE CHANGEABLE MESSAGE SIGN, AS PER PLAN

11 SIGN MONTH, ASSUMING 2 PCMS SIGNS FOR 5.5 MONTHS

**FULLY-ACTUATED OPERATION OF WORK ZONE TRAFFIC SIGNAL PHASING**



P.9	P.10	P.22	P.23	P.24	P.25	P.86	PARTICIPATION		ITEM	ITEM	GRAND	UNIT	DESCRIPTION	SEE SHEET NO.	
							02/SAF/21	01/SAE/21							EXT
													<b>ROADWAY</b>		
									201	11000	LS		CLEARING AND GRUBBING		
			8,185					8,185	202	23000	8,185	SY	PAVEMENT REMOVED		
		780						780	202	38000	780	LF	GUARDRAIL REMOVED		
		4						4	202	53100	4	EACH	MAILBOX REMOVED		
									203	10000	2,613	CY	EXCAVATION		
		2,613						2,613	203	20000	2,554	CY	EMBANKMENT		
									204	10000	8,913	SY	SUBGRADE COMPACTION		
			8,913					8,913	204	13000	2,679	CY	EXCAVATION OF SUBGRADE		
			2,679					2,679	204	30020	2,679	CY	GRANULAR MATERIAL, TYPE C		
			2,679					2,679	204	45000	5	HOUR	PROOF ROLLING		
	5							8,036	204	50000	8,036	SY	GEOTEXTILE FABRIC		
									606	15100	512.5	LF	GUARDRAIL, TYPE MGS WITH LONG POSTS		
		512.5						512.5	606	20050	1	EACH	ROUNDED END SECTION		
		1						1	606	26150	3	EACH	ANCHOR ASSEMBLY, MGS, TYPE E, MASH 2016	P.10	
		3						3	606	26550	2	EACH	ANCHOR ASSEMBLY, MGS, TYPE T		
		2						2	623	38500	3	EACH	MONUMENT ASSEMBLY, TYPE C		
						3		3	878	25000	LS		INSPECTION AND COMPACTION TESTING OF UNBOUND MATERIALS		
									4	SPECIAL	690E50100	4	EACH	MAILBOX SUPPORT SYSTEM, SINGLE	P.10
	4							4	SPECIAL	690E98400	LS		CONSULTANT FOR CONCRETE QUALITY CONTROL INCLUDING TESTING AND INSPECTION	P.11	
													<b>EROSION CONTROL</b>		
									2	659	00100	2	EACH	SOIL ANALYSIS TEST	
									590	659	00300	590	CY	TOPSOIL	
							153	3,934	659	10000	3,934	SY	SEEDING AND MULCHING		
								197	659	15000	197	SY	INTER-SEEDING		
								0.54	659	20000	0.54	TON	COMMERCIAL FERTILIZER		
								0.81	659	31000	0.81	ACRE	LIME		
								22	659	35000	22	MGAL	WATER		
									972	670	00500	972	SY	SLOPE EROSION PROTECTION	
									398	670	00700	398	SY	DITCH EROSION PROTECTION	
									832	15000	LS		STORM WATER POLLUTION PREVENTION PLAN	P.10	
									832	15002	LS		STORM WATER POLLUTION PREVENTION INSPECTIONS	P.10	
									832	15010	LS		STORM WATER POLLUTION PREVENTION INSPECTION SOFTWARE	P.10	
									832	30000	31,000	EACH	EROSION CONTROL	P.10	
													<b>DRAINAGE</b>		
									72	202	35100	72	FT	PIPE REMOVED 24" AND UNDER	
									14	601	21050	14	SY	TIED CONCRETE BLOCK MAT WITH TYPE 1 UNDERLAYMENT	
									71	601	21060	71	SY	TIED CONCRETE BLOCK MAT WITH TYPE 2 UNDERLAYMENT	
									1.18	602	20000	1.18	CY	CONCRETE MASONRY	
									418	605	05111	418	FT	4" SHALLOW PIPE UNDERDRAINS WITH GEOTEXTILE FABRIC, AS PER PLAN	P.8
	50								50	605	05200	50	FT	4" UNCLASSIFIED PIPE UNDERDRAINS	
									47	605	05211	47	FT	4" UNCLASSIFIED PIPE UNDERDRAINS WITH GEOTEXTILE FABRIC, AS PER PLAN	P.8
									2,574	605	06021	2,574	FT	4" BASE PIPE UNDERDRAINS WITH GEOTEXTILE FABRIC, AS PER PLAN	P.8
									127	611	00410	127	FT	4" CONDUIT, TYPE F FOR UNDERDRAIN OUTLET	
									49	611	04900	49	FT	12" CONDUIT, TYPE D, 706.02	
									51	611	09400	51	FT	21" CONDUIT, TYPE D	
									2	611	98630	2	EACH	CATCH BASIN ADJUSTED TO GRADE	
									1	611	99660	1	EACH	MANHOLE RECONSTRUCTED TO GRADE	
	4								11	611	99710	11	EACH	PRECAST REINFORCED CONCRETE OUTLET	
													<b>PAVEMENT</b>		
									948	301	56000	948	CY	ASPHALT CONCRETE BASE, PG64-22, (449)	
									1,587	304	20000	1,587	CY	AGGREGATE BASE	
									666	407	20000	666	GAL	NON-TRACKING TACK COAT	

DESIGN AGENCY  
**ARCADIS**  
 100 E CAMPUS VIEW BLVD SUITE 200  
 COLUMBIANA, OHIO 43085  
 (614) 382-9100  
 www.arcadis.com

DESIGNER  
**TPB**

REVIEWER  
**MAH 07/19/22**

PROJECT ID  
**111657**

SHEET TOTAL  
**P.19 | 94**

P.22	P.23	P.68	P.70	P.79	P.82	PARTICIPATION		ITEM	ITEM EXT	GRAND TOTAL	UNIT	DESCRIPTION	SEE SHEET NO.
						02/SAF/21	01/SAE/21						
<b>PAVEMENT (CONT.)</b>													
	276						276	442	10001	276	CY	ASPHALT CONCRETE SURFACE COURSE, 12.5MM, TYPE A (446), AS PER PLAN, PG76-22M	P.10
	270						270	442	10100	270	CY	ASPHALT CONCRETE INTERMEDIATE COURSE, 19MM, TYPE A (446)	
	1345						1,345	452	14010	1,345	SY	10" NON-REINFORCED CONCRETE PAVEMENT, CLASS QC 1P	
	1459						1,459	609	18000	1,459	FT	COMBINATION CURB AND GUTTER, TYPE 3	
	655						655	609	24510	655	FT	CURB, TYPE 4-C	
	390						390	609	31000	390	FT	COMBINATION CURB AND GUTTER, TYPE 9	
	346						346	609	31001	346	FT	COMBINATION CURB AND GUTTER, TYPE 9, AS PER PLAN	P.8
	1221						1,221	609	33000	1,221	FT	CURB, TYPE 10	
	2						2	609	98100	2	EA	CURB, MISC.: COMBINATION CURB AND GUTTER TURNOUT	P.8
<b>WATER WORK</b>													
29						29		638	00904	29	FT	6" WATER MAIN DUCTILE IRON ANCHORING PIPE AND FITTINGS	
2						2		638	10200	2	EACH	6" FIRE HYDRANT	
2						2		638	10480	2	EACH	FIRE HYDRANT REMOVED	
2						2		638	10800	2	EACH	VALVE BOX ADJUSTED TO GRADE	
<b>LIGHTING</b>													
				24			24	625	00450	24	EACH	CONNECTION, FUSED PULL APART	
				12			12	625	00460	12	EACH	CONNECTION, UNFUSED PULL APART	
				15			15	625	00480	15	EACH	CONNECTION, UNFUSED PERMANENT	
				1			1	625	10490	1	EACH	LIGHT POLE, CONVENTIONAL, AT12B40	
				10			10	625	10490	10	EACH	LIGHT POLE, CONVENTIONAL, AT8B40	
				1			1	625	10490	1	EACH	LIGHT POLE, CONVENTIONAL, AT6B40	
				12			12	625	14100	12	EACH	LIGHT POLE FOUNDATION, 24" X 8' DEEP	
				441			441	625	23302	441	FT	NO. 6 AWG 2400 VOLT DISTRIBUTION CABLE	
				1,156			1,156	625	23400	1,156	FT	NO. 10 AWG POLE AND BRACKET CABLE	
				1,340			1,340	625	24324	1,340	FT	1-1/2" DUCT CABLE WITH THREE NO. 6 AWG 2400 VOLT CABLES	
				127			127	625	25500	127	FT	CONDUIT, 3" 725.04	
				12			12	625	26253	12	EACH	LUMINARE, CONVENTIONAL, SOLID STATE (LED), AS PER PLAN, TYPE III	P.79
				1,317			1,317	625	29002	1,317	FT	TRENCH, 24" DEEP	
				5			5	625	30706	5	EACH	PULL BOX, 725.08, 24"	
				12			12	625	32000	12	EACH	GROUND ROD	
				1			1	625	34001	1	EACH	POWER SERVICE, AS PER PLAN	P.79
				1,317			1,317	625	36010	1,317	FT	UNDERGROUND WARNING/ MARKING TAPE	
<b>TRAFFIC CONTROL</b>													
		76						621	00100	76	EACH	RPM	
14							14	626	13312	14	EACH	BARRIER REFLECTOR, TYPE 2, BIDIRECTIONAL	
			377				377	630	03100	377	FT	GROUND MOUNTED SUPPORT, NO. 3 POST	
			9				9	630	08600	9	EACH	SIGN POST REFLECTOR	
			167				167	630	80100	167	SF	SIGN, FLAT SHEET	
			28				28	630	84900	28	EACH	REMOVAL OF GROUND MOUNTED SIGN & DISPOSAL	
			1				1	630	85100	1	EACH	REMOVAL OF GROUND MOUNTED SIGN AND REERECTION	
			19				19	630	86002	19	EACH	REMOVAL OF GROUND MOUNTED POST SUPPORT & DISPOSAL	
		0.39					0.39	644	00104	0.39	MILE	EDGE LINE, 6"	
		0.3					0.2	644	00300	0.3	MILE	CENTER LINE	
		125					125	644	00700	125	FT	TRANSVERSE / DIAGONAL LINE	
		112					112	644	01550	112	FT	DOTTED LINE, 12"	
		56					56	644	20800	56	FT	YIELD LINE	
			8				8	SPECIAL	690E98000	8	EACH	BREAK-OUT (U-CHANNEL) SIGN SUPPORT SYSTEM	P.69
<b>LANDSCAPING</b>													
					71.5		71.5	661	00500	71.5	CY	MULCH	
					546		546	661	14000	546	EACH	PERENNIALS, SPOROBOLUS HETEROLEPIS	
					125		125	661	14000	125	EACH	PERENNIALS, PANICUM VIRGATUM	
					83		83	661	20060	83	EACH	DECIDUOUS SHRUB, 3' HEIGHT, VIBURNUM DENTATUM 'RASTZAM'	
					46		46	661	30080	46	EACH	EVERGREEN SHRUB, 3' HEIGHT, JUNIPERUS VIRGINANA	
					8		8	661	40120	8	EACH	DECIDUOUS TREE, 3" CALIPER, AMELANCHIER CANADENSIS 'TRAZAM'	
					397.5		397.5	661	99930	397.5	SY	PLANTING, MISC.: BACKFILL	
					3,911		3,911	662	31000	3,911	GAL	LANDSCAPE WATERING	



P.12	P.13	PARTICIPATION		ITEM	ITEM	GRAND	UNIT	DESCRIPTION	SEE SHEET NO.
		02/SAF/21	01/SAE/21						
								<b>MAINTENANCE OF TRAFFIC</b>	
	75		75	410	10000	75	CY	TRAFFIC COMPACTED SURFACE, TYPE A	
100			100	614	11110	100	hour	LAW ENFORCEMENT OFFICER WITH PATROL CAR FOR ASSISTANCE	
2,580			2,320	614	11630	2,580	FT	INCREASED BARRIER DELINEATION	
	13		11	614	12380	13	EACH	WORK ZONE IMPACT ATTENUATOR FOR 24" WIDE HAZARDS (UNIDIRECTIONAL)	
				614	12421	LS		DETOUR SIGNING, AS PER PLAN	P.12
	89		89	614	12800	89	EACH	WORK ZONE RAISED PAVEMENT MARKER	
155			139	614	13310	155	EACH	BARRIER REFLECTOR, TYPE 1 (BIDIRECTIONAL)	
52			46	614	13360	52	EACH	OBJECT MARKER, TWO WAY	
	11		11	614	18601	11	SNMT	PORTABLE CHANGEABLE MESSAGE SIGN, AS PER PLAN	P.13
	0.36		0.36	614	21100	0.36	MILE	WORK ZONE CENTER LINE, CLASS 1, 64Z PAINT	
	1.2		1.2	614	22000	1.2	MILE	WORK ZONE EDGE LINE, CLASS I, 64Z PAINT, 4"	
	25		25	614	26200	25	FT	WORK ZONE STOP LINE, CLASS I, 64Z PAINT	
6			6	614	40050	6	EACH	BUSINESS ENTRANCE SIGN	
				615	10000	LS		ROADS FOR MAINTAINING TRAFFIC	
	1,410		1,414	615	25000	1,414	SY	PAVEMENT FOR MAINTAINING TRAFFIC, CLASS B	
				616	10000	11	MGAL	WATER	
	2,070		1,840	622	41100	2,070	FT	PORTABLE BARRIER, UNANCHORED	
	510		510	622	41110	510	FT	PORTABLE BARRIER, ANCHORED	
				614	11001	LS		<b>INCIDENTALS</b>	
				614	11001	LS		MAINTAINING TRAFFIC , AS PER PLAN	P.12
			9	619	16010	9	MNTH	FIELD OFFICE, TYPE B	
				623	10000	LS		CONSTRUCTION LAYOUT STAKES AND SURVEYING	
				624	10000	LS		MOBILIZATION	

LOCATION	STATION		AREA (SF) (CADD GENERATED)	202	204	204	204	204	301	304	407	442	442	452	609	609	609	610	609	609
	FROM	TO		PAVEMENT REMOVED SY	SUBGRADE COMPACTION SY	EXCAVATION OF SUBGRADE CY	GRANULAR MATERIAL, TYPE C CY	GEOTEXTILE FABRIC SY	ASPHALT CONCRETE BASE, (446), PG64-22 CY	AGGREGATE BASE CY	NON-TRACKING TACK COAT GAL	ASPHALT CONCRETE SURFACE COURSE, 12.5MM, TYPE A (446), PG76-22M CY	ASPHALT CONCRETE INTERMEDIATE COURSE, 19MM, TYPE A (446) CY	10" NON-REINFORCED CONCRETE PAVEMENT, CLASS QC 1P SY	COMBINATION CURB AND GUTTER, TYPE 3 FT	CURB, TYPE 4-C FT	COMBINATION CURB AND GUTTER, TYPE 9 FT	COMBINATION CURB AND GUTTER, TYPE 9, AS PER PLAN FT	CURB, TYPE 10 FT	COMBINATION CURB AND GUTTER TURNOUT EA
US-68 & S.R. 235			67321	7480																
SPLITTER ISLAND NORTH			1398						66				155						441	
SPLITTER ISLAND SOUTH			1839						87				204						482	
SPLITTER ISLAND WEST			897						23				100						298	
REF. LINE "SE" & "NE"	70+00.00	82+00.00													399					
REF. LINE "N"	90+70.00	96+50.00													330					
REF. LINE "SW" & "NW"	110+00.00	103+00.00													730					
ROUNDAABOUT INTERIOR			5502										611			276	390			
TRUCK APRON SE			438										49		110			108		
TRUCK APRON N			1913										213		233			238		
US-68 & S.R. 235			50700									235								
US-68 & S.R. 235			50825							627		235								
US-68 & S.R. 235			51203					948												
US-68 & S.R. 235			65998						1222											
US-68 & S.R. 235			72326		8036	2679	2679	8036												
DRIVE 1 (US-68) AGGREGATE	12+97.82		557		62						14									
DRIVE 1 (US-68) ASPHALT	12+97.82		475		53						9		3							
DRIVE 2 (US-68)	202+44.09		3256	408	362						80	20	13	18	13		36			
DRIVE 3 (SR-235)	50+30.38		105		12						3									
DRIVE 4 (SR-235)	112+76.61		1140		85	127					28	7	4	6						
DRIVE 5 (US-68)	204+79.97		1254		73	139					31	8	5	7						
DRIVE 6 (US-68)	32+33.46		367		14	41					7		14							
DRIVE 7 (US-68)	42+92.14		737		125	82					18	5	3	4						
REF. LINE "NR"	40+59.48																			1
REF. LINE "NL"	31+94.97																			1
<b>TOTALS CARRIED TO GENERAL SUMMARY</b>			<b>8185</b>	<b>8913</b>	<b>2679</b>	<b>2679</b>	<b>8036</b>	<b>948</b>	<b>1587</b>	<b>666</b>	<b>276</b>	<b>270</b>	<b>1345</b>	<b>1459</b>	<b>655</b>	<b>390</b>	<b>346</b>	<b>1221</b>	<b>2</b>	

PAVEMENT SUBSUMMARY