

STATE OF OHIO
DEPARTMENT OF HIGHWAYS
GRE-68-(11.37)(13.09-13.68)
XENIA T'W'P.
GREENE COUNTY

FED. RD. DIVISION	STATE	PROJECT	FISCAL YEAR
2	OHIO	H.I.	1948

GREENE COUNTY
GRE-68-(11.37)(13.09-13.68)

~CONVENTIONAL SIGNS~

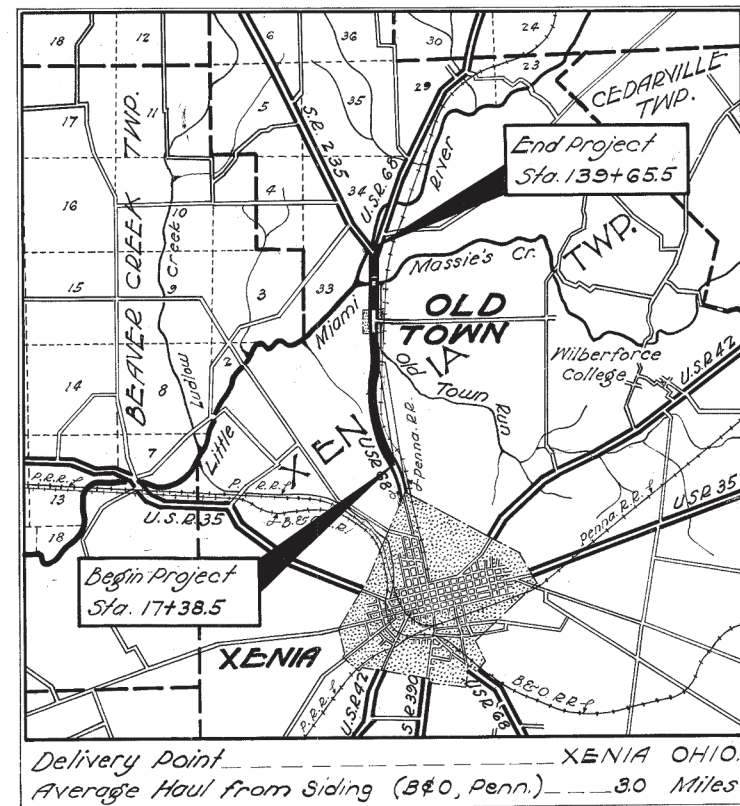
TOWNSHIP LINE	-----	
SECTION LINE	-----	
CITY OR VILLAGE LINE	-----	
PROPERTY LINE (Not Fenced)	-----	P.L.
PROPERTY LINE (Fenced)	-----	P.L.
FENCE LINE	-----	
CENTER LINE	-----	
RAILROAD (Steam)	-----	
POLE LINE	-----	Telephone & Telegraph & Power & Light &
DRAIN PIPE (Existing)	-----	
DRAIN PIPE (New)	-----	
GUARD RAIL (Existing)	-----	
GUARD RAIL (New)	-----	
TREES (Existing)	-----	

~INDEX OF SHEETS~

TITLE SHEET	-----	SHEET No. 1
TYPICAL SECTIONS	-----	" 2
GENERAL NOTES	-----	" 3
SUMMARY OF QUANTITIES	-----	" 4 & 5
PLAN & PROFILE	-----	" 6-14
CROSS SECTIONS	-----	" 15
PAVEMENT DETAILS	-----	" 16 & 17
STRUCTURES - 20 FT. SPAN & UNDER	-----	" 18 & 19

LINE DATA

BEGIN PROJECT	-----	Sta. 17+38.50
END PROJECT	-----	Sta. 139+65.50
		12227.00
ADD FOR EQUATION	Sta. 85+61.09 Back	
	Sta. 85+42.85 Ahead	18.24
GROSS LENGTH OF PROJECT	-----	12245.24
No work required between the following Stations:		
	Sta. 95+29.5 to Sta. 108+20.20 = 1290.70	
	Sta. 123+17.93 to Sta. 124+52.31 = 134.38	
	Sta. 126+33.85 to Sta. 126+55.35 = 21.50	
NET LENGTH OF PROJECT	-----	1446.58 Lin. Ft.
		10798.66 Lin. Ft. or 2.045 Miles
	Add for work Sta. 16+57 to Sta. 17+38.50 = 81.50	
NET LENGTH OF WORK	-----	10880.16 Lin. Ft. or 2.060 Miles



~LOCATION PLAN~

Delivery Point ----- XENIA OHIO.
Average Haul from Siding (B&O, Penn.) ----- 3.0 Miles

Scale in Miles

PORTION TO BE IMPROVED	=====
STATE HIGHWAYS	=====
OTHER ROADS	=====

~SCALE-S~

PLAN	-----	1" = 100-50-20 FT.
PROFILE ~ Horizontal	-----	1" = 100-50-20 FT.
PROFILE ~ Vertical	-----	1" = 10-5 FT.
CROSS SECTIONS	-----	1" = 5 FT.

THE STANDARD SPECIFICATIONS OF THE STATE OF OHIO DEPARTMENT OF HIGHWAYS, INCLUDING CHANGES AND SUPPLEMENTAL SPECIFICATIONS LISTED IN THE PROPOSAL, SHALL GOVERN THIS IMPROVEMENT.

THE RIGHT OF WAY FOR THIS IMPROVEMENT WILL BE PROVIDED BY THE STATE OF OHIO.

I HEREBY APPROVE THESE PLANS AND DECLARE THAT THE MAKING OF THIS IMPROVEMENT WILL NOT REQUIRE THE CLOSING OF TRAFFIC OF THE HIGHWAY AND THAT PROVISIONS FOR THE MAINTENANCE AND SAFETY OF TRAFFIC WILL BE AS SET FORTH ON THE PLANS AND ESTIMATES.

Approved: *Janston Goodenicht RE. 1577*
Date 2-20-48 Division Deputy Director

Approved: _____
Date _____ Chief Engineer, Bureau of Maintenance

Approved: _____
Date _____ Chief Engineer, Bureau of Bridges & R.R. Crossings

Approved: *George Thormeyer*
Date 3/11/48 Chief Engineer, Bureau of Location and Design.

Approved: *Frank Williams*
Date 3-4-48 First Assistant Director and Chief Engineer

Approved: *Earl L. Reeb*
Date 3-4-48 Director of Highways.

FILE No.	GREENE CO. DATE OF LETTING CONTRACT No.
----------	-----------------------------------------------

SUPPLEMENTAL SPECIFICATIONS	
SS-112	Rev. 11-6-46

SUPPLEMENTAL PRINTS OF STANDARD CONSTRUCTION					
L-3	2-1-47	I-15 N°4	2-1-47	P.J. N°1	2-16-48
I-1,2,3,4&5	2-20-45	I-15 N°5	2-1-47	P.J. N°2	2-16-48
G. 8.07	2-1-47	I-15 N°6	2-1-47		
I-15 N°1	3-1-47	I-15 N°7	2-1-47		
I-15 N°2	2-1-47	I-15 N°8	2-1-47		
		I-8 C.B.2-2A&B	12-15-41		
		S-27 P.C.2	12-1-41		

CONSTRUCTION
SAFETY
JUL 9 1948
GROUND PHOTOGRAPH

TYPICAL SECTIONS

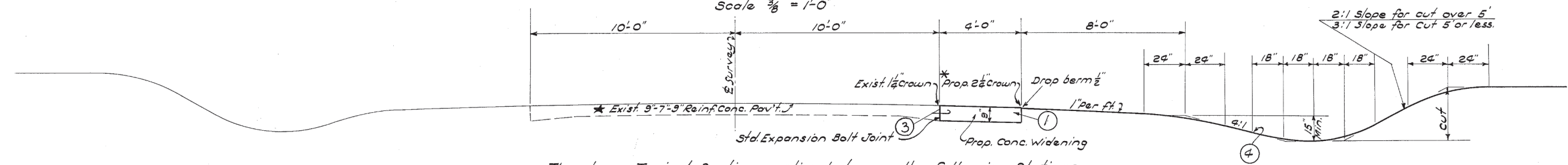
TYPE T-70

Scale $\frac{3}{8}'' = 1'-0''$

FED. RD. DIVISION	STATE	PROJECT	FISCAL YEAR
2	OHIO	H. I.	1948

2
19

GREENE COUNTY
GRE-68-(11.37)(13.09-13.68)

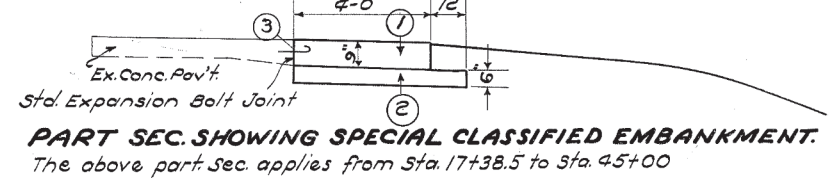


The above Typical Section applies between the following Stations.

Sta. 18+50 to Sta. 64+50	(4'-0" Widening on Rt.) =	4600.00 Lin. Ft.
Sta. 67+00 to Sta. 94+00	(4'-0" Widening on Lt.) =	2700.00 Lin. Ft.
Sta. 109+68 to Sta. 117+00	(4'-0" Widening on Rt.) =	732.00 Lin. Ft.
Sta. 126+55.35 to Sta. 138+13.63	(4'-0" Widening on Rt.) =	1158.28 Lin. Ft.
	Total	9190.28 Lin. Ft.

Notes:-

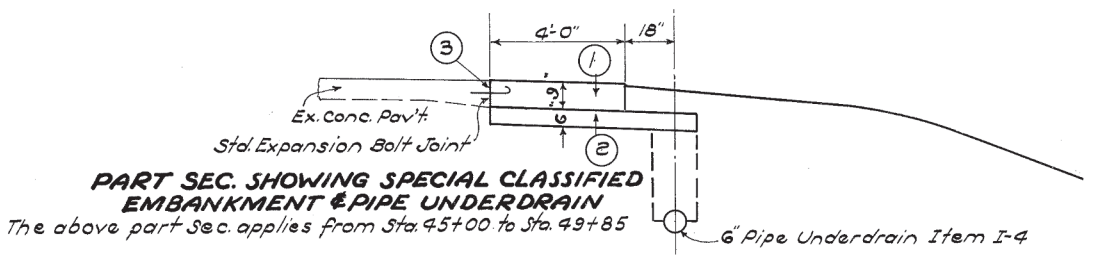
- * This applies to normal section only. For Super-elevated Section, See Part: Super-elevated Sec. below.
- ★ Between Sta. 109+00 and Sta. 115+00, Exist. Pav't consists of 16'-8" Reinf. Conc., widened 2' Rt & Lt. with 9" Plain Concrete.



LIST OF FLARES

Sta. 17+38.5	to Sta. 18+50
Sta. 64+50	to Sta. 67+00
Sta. 94+00	to Sta. 95+29.5
Sta. 95+29.5	to Sta. 108+20.2 No work required.
Sta. 108+20.2	to Sta. 109+68
Sta. 117+00	to Sta. 123+17.93
Sta. 123+17.93	to Sta. 124+52.31 No work required.
Sta. 124+52.31	to Sta. 126+33.85
Sta. 126+33.85	to Sta. 126+55.35 No work required.
Sta. 138+13.63	to Sta. 139+65.5

- ① Item T-70 Portland Cement Concrete Pavement
- ② Item SS-112 6" Special Classified Embankment Material Grading "C" or "D" except the amount passing No. 200 Sieve be 5 to 15 Percent if furnished under grading "C", 5 to 20 percent if furnished under grading "D" and the requirements of SS-112 as to percent passing the No. 50 sieve be waived.
- ③ Item E-8 Sealing only.
- ④ Item L-9 Seeding & Protecting Type "A".

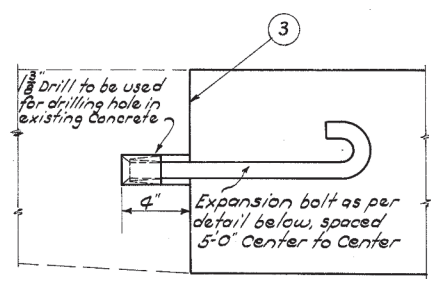


LOCATION OF TRANSVERSE JOINTS

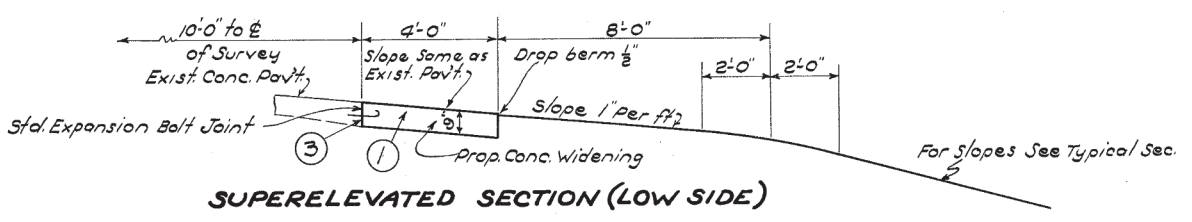
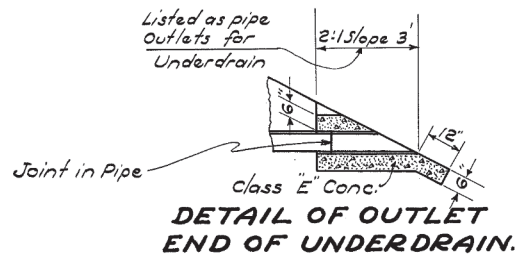
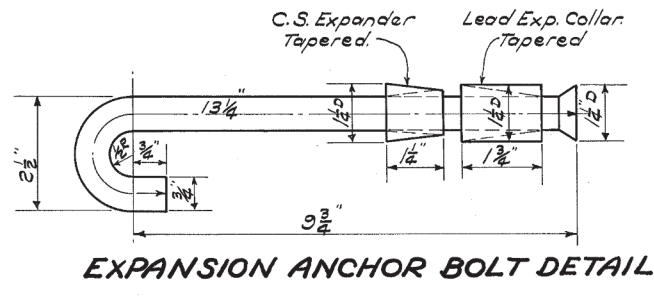
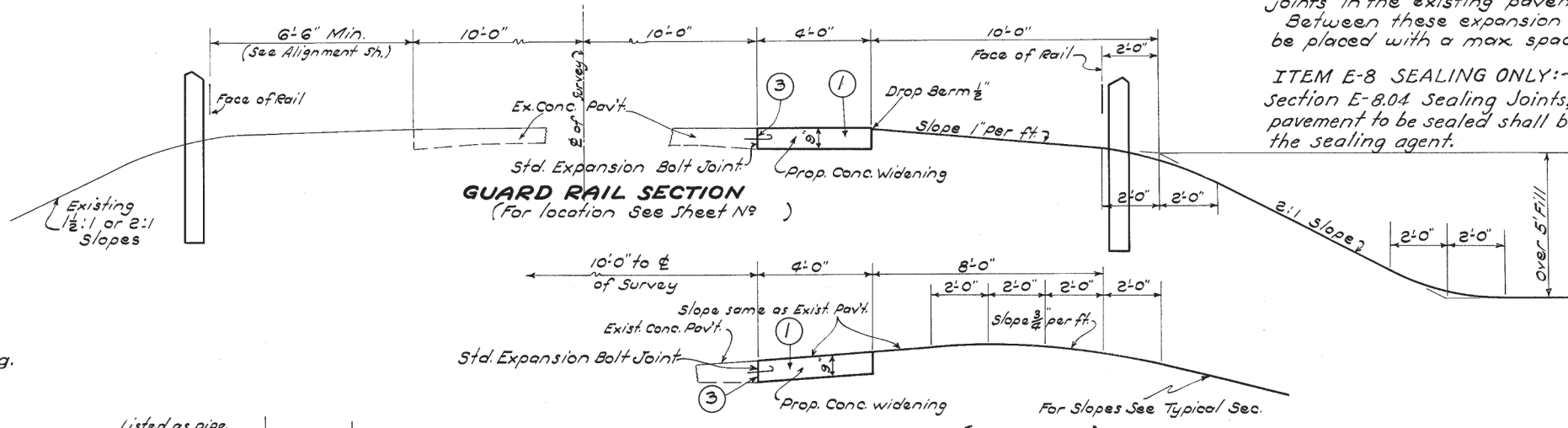
Expansion joints shall be placed in line with the expansion joints in the existing pavement (Approx. spacing 60 ft)

Between these expansion joints, contraction joints shall be placed with a max spacing of 20 ft.

ITEM E-8 SEALING ONLY:- In addition to the requirements of Section E-8.04 Sealing Joints, edges of portland cement concrete pavement to be sealed shall be thoroughly cleaned before applying the sealing agent.



STD. EXPANSION BOLT JOINT
Note: For other details see Standard Drawing.



NOTES

FED. RD. DIVISION	STATE	PROJECT	FISCAL YEAR
2	OHIO	H. I.	1948

3
19

GREENE COUNTY
GRE-68-(11.37)(13.09-13.68)

GENERAL

TRAFFIC

Two way traffic shall be maintained at all times. For details see specifications.

FIELD HOUSE

The contractor shall provide a suitable "Field Office" for the exclusive use of the Engineer and Inspectors assigned to this project. This office shall have a minimum of 200 sq. ft. of floor space so arranged, equipped and lighted that the State employees will have a convenient place for making the necessary records, etc., and have a safe place for storage of equipment, plans and necessary supplies. The Contractor shall have a telephone installed and maintained during construction of this project. When work is in progress during cold weather, the office shall be heated to a temperature of at least seventy (70°) degrees Fahrenheit (See section S-0.01(b) of the Construction and Material Specifications.)

UTILITY ADJUSTMENTS

Any and all work, required for Public or Private Utilities will be done by and at the expense of their respective owners unless otherwise noted in these plans.

WORK BY STATE MAINTENANCE FORCES

All guard rail and markers noted for removal on the alignment sheets will be removed by State Maintenance Forces. All work by the State shall be done without interfering with the work of the Contractor. State Maintenance Forces will also do the necessary painting of pavement at flares as noted on the pavement details.

ROADWAY

GENERAL CONSTRUCTION NOTES

The proposed construction shall be confined to the limits of the existing Right of Way except where Proposed Right of Way is shown on the alignment sheets.

Back slopes adjacent to the Right of Way Line may be adjusted in the field to stay within the Right of Way.

Roadway excavation, embankment, slopes, and seeding shall be performed where and as directed by the Engineer.

Typical Cross Sections (See Sh. N^o 15) shall be used as a guide in performing the above work.

Cross Sections shall be taken by the Construction Field Crew before the beginning of Construction Work and again after the Construction Work has been completed. All quantities of work completed and accepted shall be paid for according to final measurements.

LOCATION AND SIZE OF EXISTING PIPE

The location, type, depth, and size of all existing pipes are shown as near exact as the available information will permit. The State of Ohio will not be responsible for any variations found during Construction.

GUARD RAIL

Guard rail shall be flared to meet bridge railing in such a manner that the change in alignment of guard rail will not exceed 1:10.

DISPOSAL OF PAVEMENT

Pavement removed under Item E-8 shall be disposed of as directed by the Engineer on the Right of Way between Sta. 89+00 and Sta. 97+00 (Rt.) for protection against erosion by High Water.

SEEDING AND PROTECTING TYPE "A"

Quantities for Seeding and Protecting Type "A" are calculated for the soil areas between lines ten feet (10') outside the actual work limits or to the R/W line if such line is less than ten feet from the works limits.

All areas outside these limits where the vegetative growth has been injuriously disturbed or destroyed by the contractor shall be restored and seeded in accordance with the provisions of Item L-9 by the contractor at his own expense.

The mixture of seed outlined under Item L-9 shall be deleted and the following mixture substituted.

- 40% Kentucky Blue Grass
- 25% Alsike Clover
- 15% Perennial Rye Grass
- 20% Red Top

All legumes shall be inoculated.

PAVEMENT

TRANSVERSE JOINTS

Expansion joints shall be placed in line with the expansion joints in the existing pavement (Existing spacing approx 60 ft.). Between these expansion joints, contraction joints shall be constructed with a maximum spacing of 20 ft.

FINISHING PAVEMENT

All Portland Cement Concrete Pavement may be finished in accordance with Section T-71.211 of the Construction and Material Specifications.

SUMMARY OF QUANTITIES

PAVEMENT WIDENING & DRIVES

Station to Station	Side	Description	9"	Removal	Side Appr's	Pipe	Relaying	Sealing	See Sht. No.
			Plain	& Disposal	Mail Box	Removed for	Pipe	Only	
			Concrete	of Existing	Turnouts &	Re-use	Relaying		
			Item T-70	Item E-8	Item I-17	Item E-12	Item I-6	Item E-8	
			Sq. Yd.	Sq. Yd.	Cu. Yd.	12" 18"	12" 18"	Lin. Ft.	
17+38.5 ~ 18+50	Rt.	Flare	49.8	37.8				116	16
18+50 ~ 64+50	Rt.	Std. 4' W.	2040.7					4593	2
64+50 ~ 67+00	Rt.	Flare	166.7					500	16
67+00 ~ 94+00	Lt.	Std. 4' W.	1205.7					2714	2
94+00 ~ 95+29.5	Lt.	Flare	57.8	44.4				134	16
108+20.2 ~ 109+68	Rt.	Flare	58.4	29.1				154	17
109+68 ~ 117+00	Rt.	Std. 4' W.	325.3					732	2
117+00 ~ 123+17.93	Rt.	Flare	389.9					1240	17
124+52.31 ~ 126+33.85	Rt.	Flare	100.9					367	17
126+55.35 ~ 138+13.63	Rt.	Std. 4' W.	512.3					1154	2
138+13.63 ~ 139+65.5	Rt.	Flare	50.6					154	17
35+36	Rt.	Drive			2				16
65+64	Lt.	Drive			2				16
73+85	Lt.	Drive		9.1	4	20	20		16
75+34	Lt.	Drive		9.3	2				16
112+97	Rt.	Drive			2				17
124+81.1	Lt.	Drive		12.6	2				17
125+35	Rt.	Drive		12.5	2				17
131+42	Rt.	Drive			4	26	26		17
67+62.68				9.1					
69+75	Lt.	Mailbox			4				16#9
125+97	Rt.	Mailbox			4				16#13
126+95.35	Rt.	Mailbox			4				16#13
131+18	Rt.	Mailbox			4				16#14
Totals			4958.1	163.9	36	20 26	20 26	11858	

GUARD RAIL

Station to Station	Side	Guard Rail	See Sht. No.
		Item I-15	
		Lin. Ft.	
16+57-17+32	Rt.	75.0	6
30+76.5-31+01.6	Rt.	25.0	7
30+79.5-31+04.5	Lt.	25.0	7
41+65-41+90	Lt.	25.0	7
41+79-42+04	Rt.	25.0	7
55+58.64-56+45.5	Lt.	87.5	8
56+70.5-60+92.37	Lt.	425.0	8
56+58.19-67+49.92	Rt.	1087.5	8
62+55.04-65+30	Lt.	275.0	8
67+84.5-75+77.91	Rt.	800.0	8#9
74+50-75+13.18	Lt.	62.5	9
75+46.97-93+53.48	Lt.	1825.0	9#10
87+50-95+02.09	Rt.	750.0	9#10
117+01.86-123+17.5	Lt.	612.5	13
118+43.75-123+17.5	Rt.	475.0	13
124+55.5-125+17.7	Rt.	62.5	13
125+53-126+28	Rt.	75.0	13
127+02.03-130+72	Lt.	375.0	13
128+00-131+26.71	Rt.	325.0	13#14
Totals		7412.5	

EXCAVATION & EMBANKMENT

Station to Station	Exc.	Emb.	Emb. +20%	See Sht. No.
	Item E-1			
	Cu. Yd.	Cu. Yd.	Cu. Yd.	
17+38.5 ~ 95+29.5	1659	2979	3575	10#15
108+20.2 ~ 123+17.93	257	584	701	13#15
124+52.31 ~ 139+65.5	304	239	287	14#15
Totals	2220	3802	4563	

Borrow Calculations
 Embankment +20% 4563 Cu. Yd.
 Excavation 2220 Cu. Yd.
 Borrow Item E-4 2343 Cu. Yd.

EROSION CONTROL

Station to Station	Seeding & Protecting Type "A"	Sodding	See Sht. No.
	Item L-9	Item L-10	
	Sq. Yd.	Sq. Yd.	
17+38.5 ~ 95+29.5	25,975		10#15
108+20.2 ~ 123+17.93	5081		13#15
124+52.31 ~ 139+65.5	4269		14#15
64+80 ~ 65+51		73	8
130+75 ~ 131+30		56	13#14
Totals	35,325	129	

STRUCTURES 20 FT. SPAN & UNDER

No.	Station	Type	Size	Length Incl. Ext.	Std. Drawings	See Sheet No.	Excavation	Concrete	Pipe	Catch	Catch	Std. Catch
							for Structures	for Structures	for Roadway	Basins Abandoned	Basins Adjusted to Grade	Basins No. 2-2-A (except furnishing casting)
							Item E-2	Item S-1	Item S-27	Item I-16	Item I-8	Item I-8
							Cu. Yd.	Cu. Yd.	Lin. Ft.	Each	Each	Each
1	69+76	Pipe	12"	77'-6"	F8C.B.22A#B	18					1	
2	74+46.5	Pipe	12"	47'-6"	F8C.B.22A#B	19			5	1		1
3	135+31.5	Pipe	12"	75'-0"	S-27 P.C. 2	19	2	0.5	4			
Totals							2	0.5	9	1	1	1

CLASSIFIED EMBANKMENT

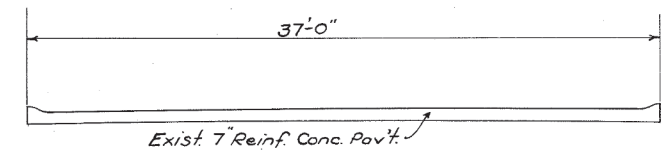
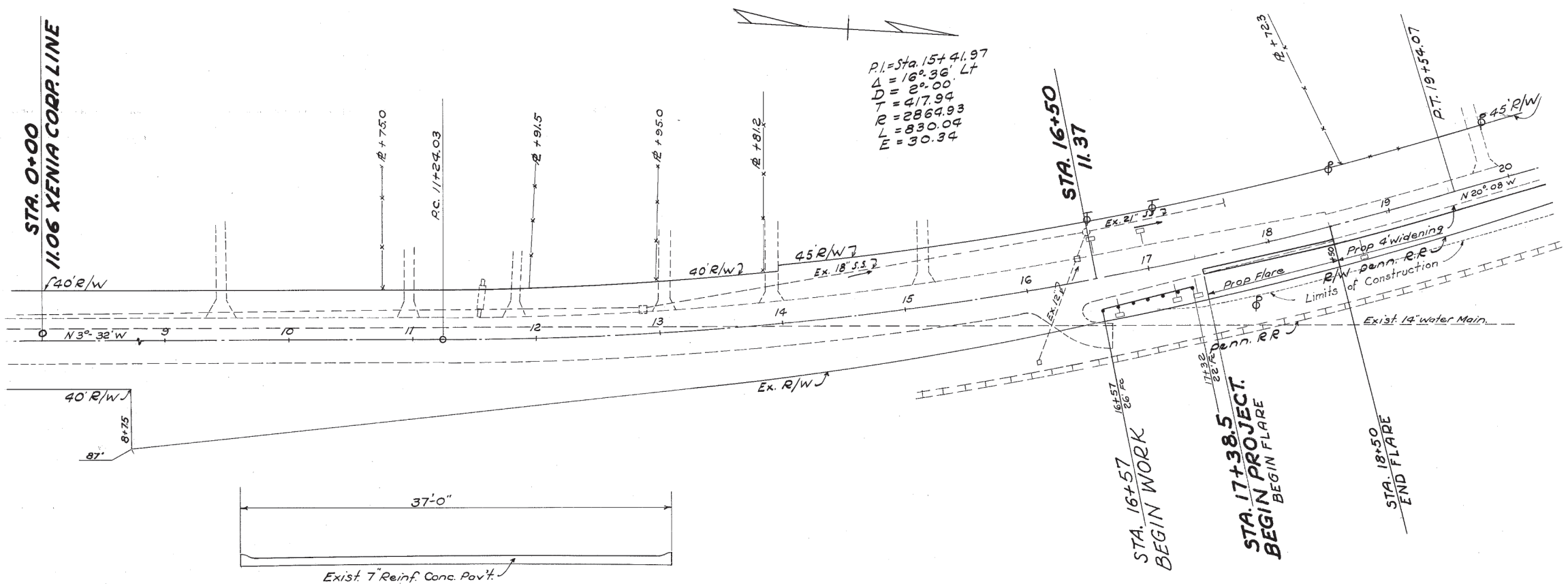
Station to Station	Side	Special Class. Emb.	See Sht. No.
		Item SS-112	
		Cu. Yd.	
17+38.5-45+00	Rt.	256	2678
45+00-49+85	Rt.	56	2#8
Total		312	

UNDERDRAINS

Station to Station	Side	6" Underdrains	6" Pipe Outlets for Underdrains	Pipe Specials	See Sht. No.
		Item I-4	Item I-4	Item I-5	
		Lin. Ft.	Lin. Ft.	Each	
45+00 ~ 49+85	Rt.	484			2#8
49+85	Rt.			1	2#8
49+85 ~ 50+13	Rt.		42		2#8
Totals		484	42	1	

GENERAL SUMMARY

ITEM	QUANT	UNIT	DESCRIPTION
ROADWAY			
E-1	2220	Cu. Yd.	Roadway Excavation.
E-4	2343	Cu. Yd.	Borrow
E-8	11858	Lin. Ft.	Sealing Only
E-8	164	Sq. Yd.	Removal and Disposal of Existing Pavement.
E-11	27	M. Gal.	Water
E-12	20	Lin. Ft.	12" Pipe Removed for Re-use.
E-12	26	Lin. Ft.	18" Pipe Removed for Re-use.
I-4	484	Lin. Ft.	6" Underdrains.
I-4	42	Lin. Ft.	6" Pipe Outlets for Underdrains. As per plan.
I-5	1	Each	Pipe Specials 6"X45° Bend for Underdrains.
I-6	20	Lin. Ft.	Relaying 12" Pipe For Driveways
I-6	26	Lin. Ft.	Relaying 18" Pipe For Driveways
I-15	7412.5	Lin. Ft.	Guard Rail Steel Beam Type (Shallow) or Standard Strength Flexible Steel Plate, Tension Type
I-17	36	Cu. Yd.	Side Approaches, Mail Box Turnouts & Berm Material.
L-9	35,325	Sq. Yd.	Seeding & Protecting, Type "A" As per plan.
L-10	129	Sq. Yd.	Sodding
SS-112	312	Cu. Yd.	Classified Embankment Material, Special As per plan.
PAVEMENT			
T-70	495.9	Sq. Yd.	9" Portland Cement Concrete Pavement.
STRUCTURES 20 FT. SPAN & UNDER			
E-2	2	Cu. Yd.	Excavation for Structures.
I-8	1	Each	Catch Basins Adjusted to Grade.
I-8	1	Each	Std. No 2-2A Catch Basin (Except furnishing casting.)
I-16	1	Each	Catch Basins Abandoned.
S-1	0.5	Cu. Yd.	Concrete for Structures, Class "E"
S-27	9	Lin. Ft.	12" Pipe for Roadway Culverts.
Special	Lump	Lump Sum	Maintaining Traffic As per plan.



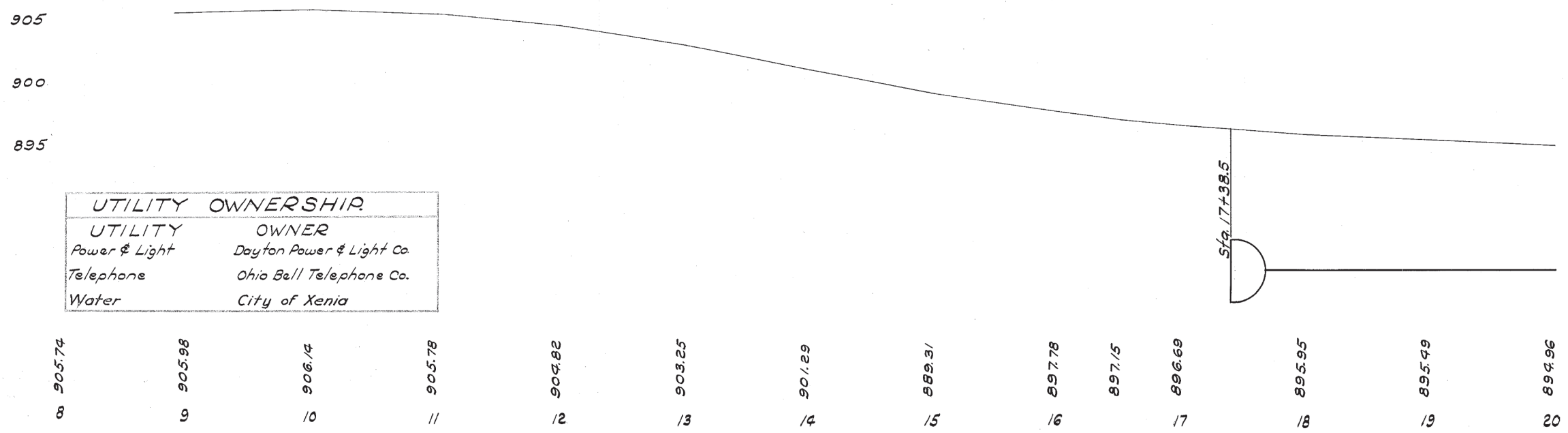
TYPICAL SECTION OF EXIST. PAVEMENT
 ADJACENT TO BEGINNING OF PROJECT.

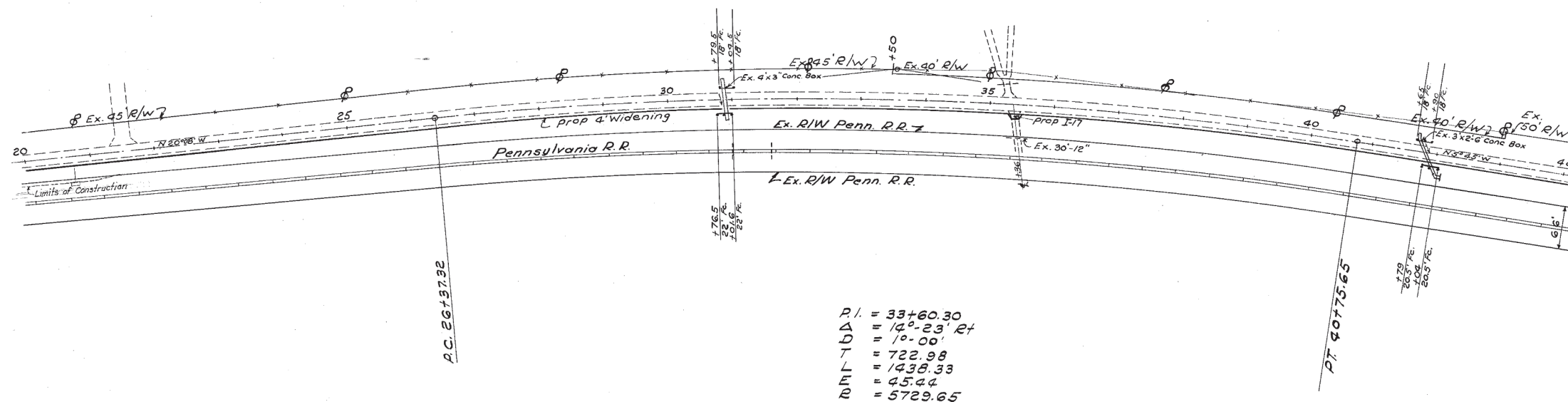
Bench Mark Sta. 15+53
 Extreme S.E. Cor. of Partico 79.5' Lt.
 E/ev. = 903.01

Note:
 For Quantities See Sheet No 4.
 For Pavement Details See Sheet No 16.

All elevations shown are to U.S.G.S Datum.

Profile shown is Crown of existing pavement.

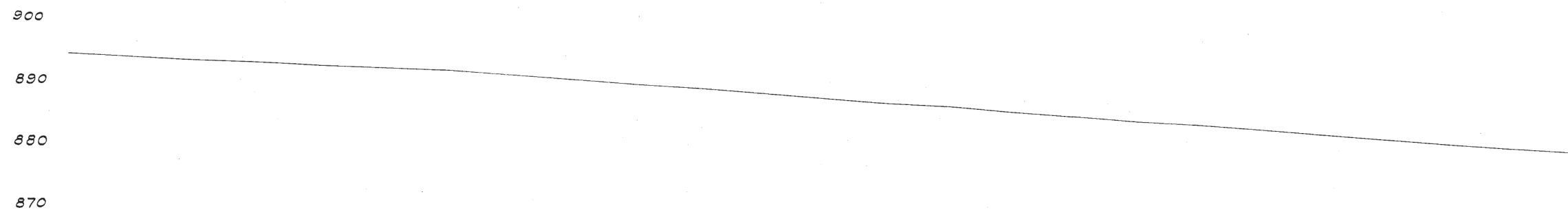




Bench Mark Sta. 30+87
 5" Cut Extreme S.W. Cor. Wing
 of Conc. Box Culvert.
 Elev. = 886.26

Note:
 For Quantities See Sheet No 4.
 For Drive Details See Sheet No 16.

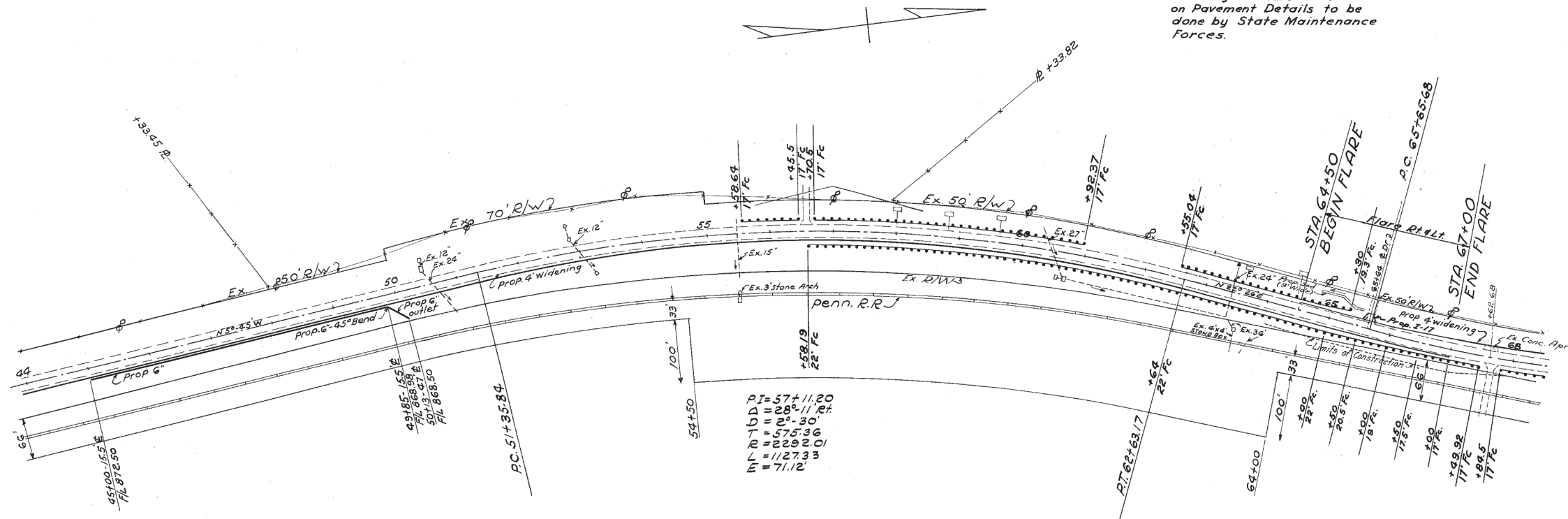
Profile shown is crown of existing pavement



894.96	894.37	893.87	893.48	892.97	892.49	892.07	891.35	890.62	889.82	889.05	888.30	887.58	886.83	886.08	885.35	884.53	883.78	883.05	882.25	881.50	880.73	879.91	879.14	878.40
20	21	22	23	24	25	26	27	28	29	30	31	32	33	34	35	36	37	38	39	40	41	42	43	44

STA. 20+00 to STA. 44+00

Note: Painting of Flare as shown on Pavement Details to be done by State Maintenance Forces.



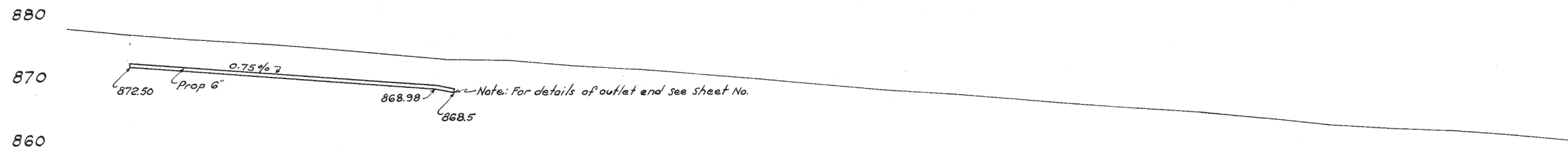
PI = 57+11.20
 TD = 11+28.11 Rt.
 R = 2292.01
 L = 1127.33
 M = 71.12

Bench Mark Sta. 55+49.3 Lt.
 "a" S.W. Cor. Conc. Inlet Box
 E/ev.: 868.81

Note:
 For Quantities See Sheet No. 9.
 For Flare & Drive Details See Sheet No. 16.

Note:-
 Existing markers to be removed by State Maintenance Forces.

Profile shown is Crown of existing pavement.



44	878.40
45	877.64
46	876.93
47	876.11
48	875.38
49	874.61
50	873.87
51	873.50
52	872.76
53	872.03
54	871.27
55	870.52
56	869.72
57	868.88
58	868.09
59	867.28
60	866.53
61	865.92
62	865.12
63	864.25
64	863.06
65	862.61
66	862.19
67	861.40
68	860.44

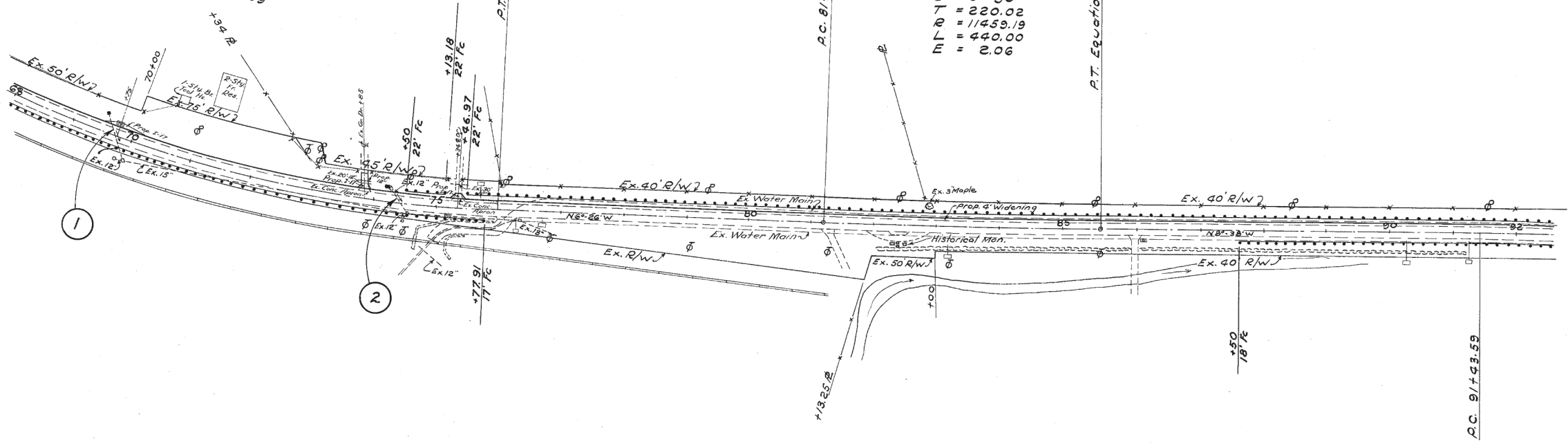
STRUCTURES ~ 20 FT. SPAN & UNDER

No	Station	Existing Structure			Proposed Work	See Sheet No.
		Type	Size	Length		
1	69+76	Pipe	12"	77'-6"	Adjust Ex. C.B. to grade on Lt. &	18
2	74+46.5	Pipe	12"	43'-10"	Extend Exist. Culv. on Lt. of &	19

$P.I. = 70+92.40$
 $\Delta = 28^{\circ} 52' Lt$
 $b = 2^{\circ} 48'$
 $T = 526.72$
 $R = 2046.48$
 $L = 1030.95$
 $M = 66.69$

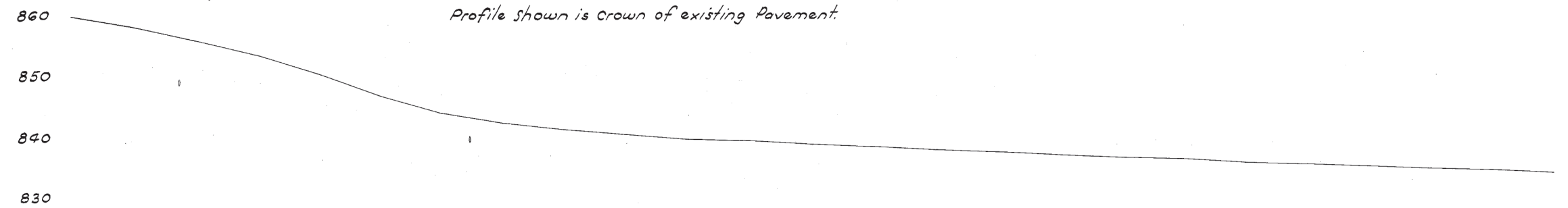
$P.I. = 83+41.11$
 $\Delta = 2^{\circ} 12' Lt$
 $b = 0^{\circ} 30'$
 $T = 220.02$
 $R = 11459.19$
 $L = 440.00$
 $M = 2.06$

P.T. Equation $85+61.09$ Backs
 $85+42.85$ Ahead
 Add 18.24 Lin. Ft.

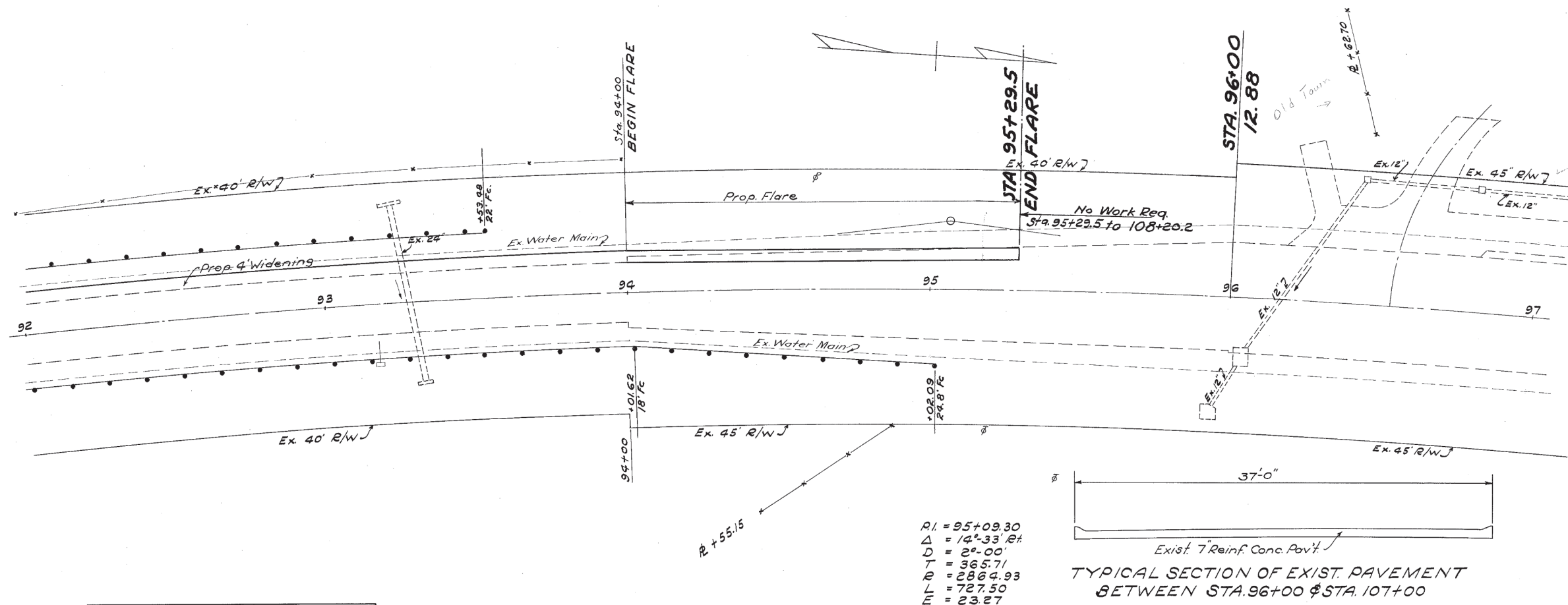


Note:
 For Quantities See Sheet No. 9.
 For Drive Details See Sheet No. 16.

Bench Mark Sta. 81+85 ± Rt.
 2" Cut S.W. Cor. W. End N. Stone
 Abut. Wing. (Top Lowest Stone Step.) R.R. Bridge
 Elev. = 836.89



860.44	858.90	856.82	854.35	851.20	847.78	844.97	843.10	842.09	841.26	840.60	840.19	839.71	839.26	838.83	838.49	837.97	837.52	837.02	836.65	836.31	835.88	835.46	835.14	834.80
68	69	70	71	72	73	74	75	76	77	78	79	80	81	82	83	84	85	86	87	88	89	90	91	92

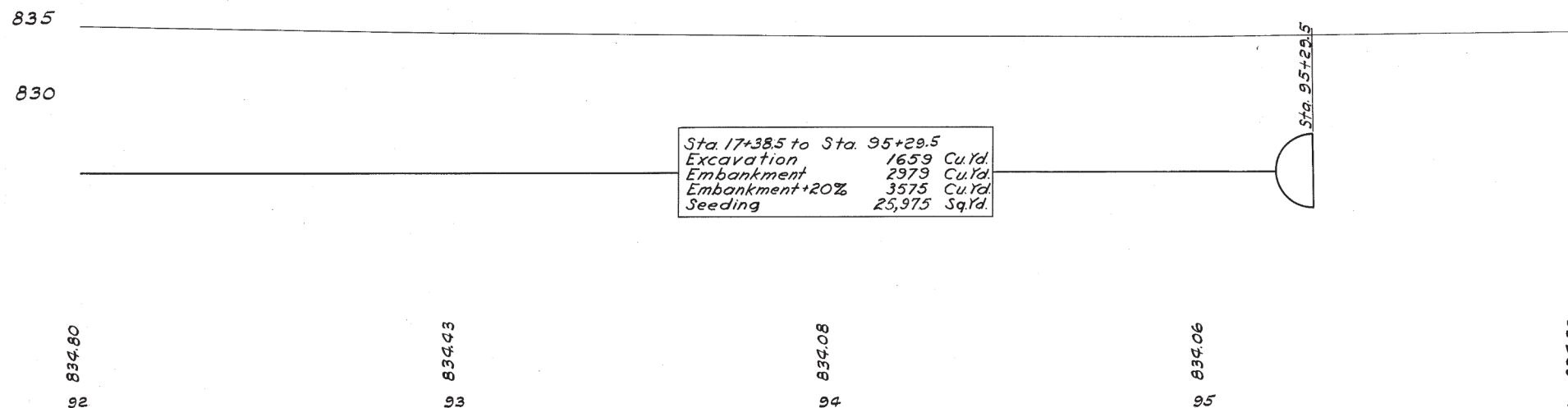


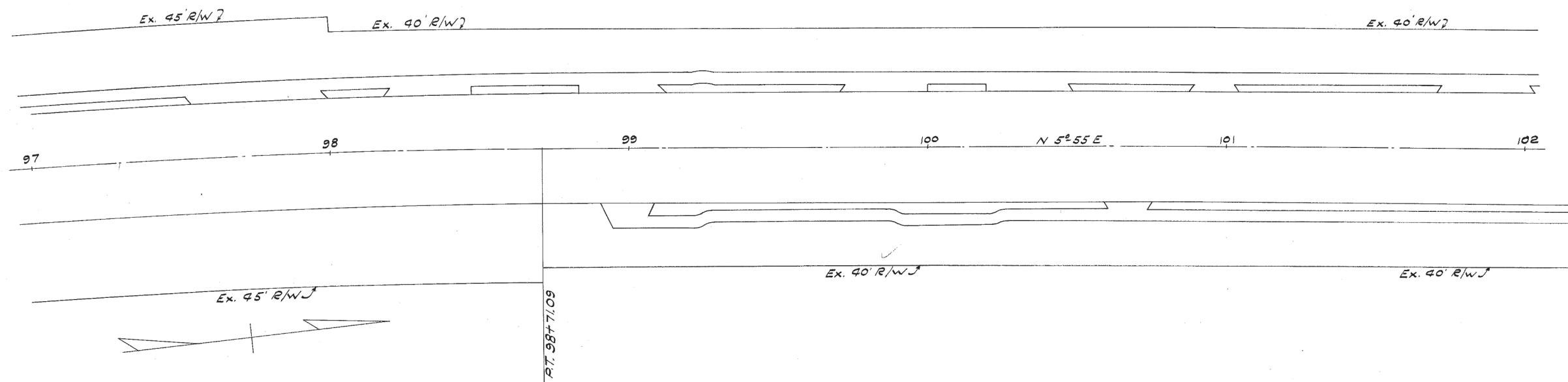
Note:-
For Quantities See Sheet No. 4 & 15
For Flare Details See Sheet No. 16.

Bench Mark Sta. 93+22 ± Lt.
2" Cut on S.W. Cor. Conc. Hdwall W. End.
Elev. = 833.63

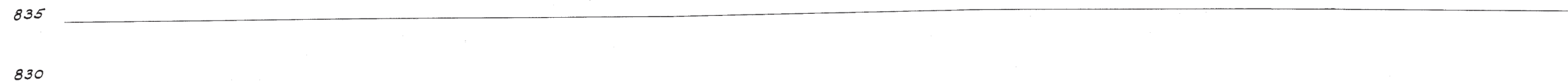
$R_1 = 95+09.30$
 $\Delta = 14^\circ-33' R\#$
 $D = 2^\circ-00'$
 $T = 365.71$
 $R = 2864.93$
 $L = 727.50$
 $E = 23.27$

Profile shown is Crown of existing Pavement





Profile shown is Crown of existing Pavement.



834.70
97

835.16
98

835.51
99

835.70
100

835.87
101

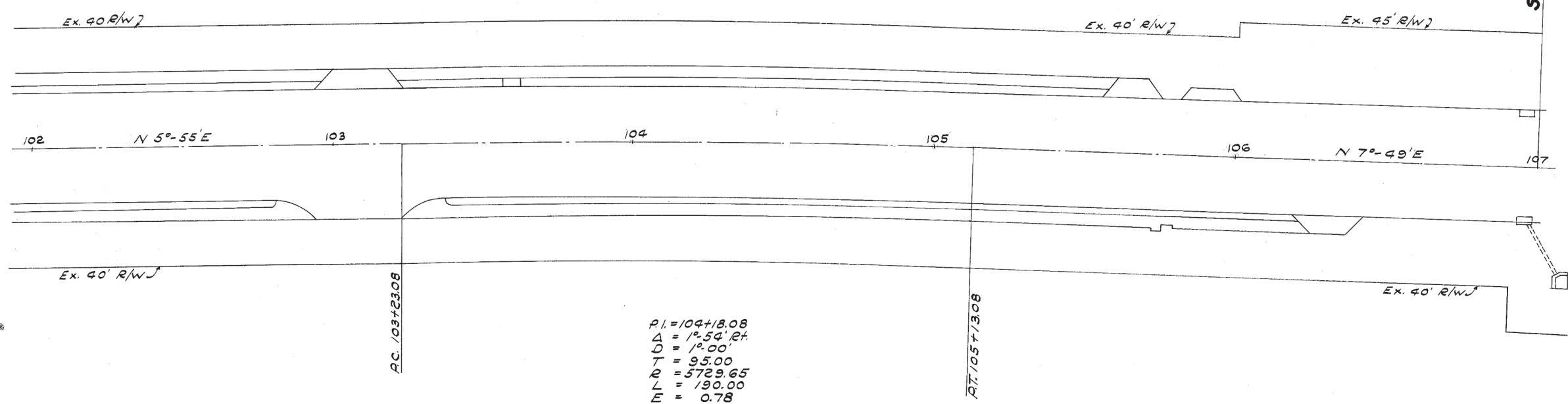
835.59
102

STA. 97+00 to STA. 102+00



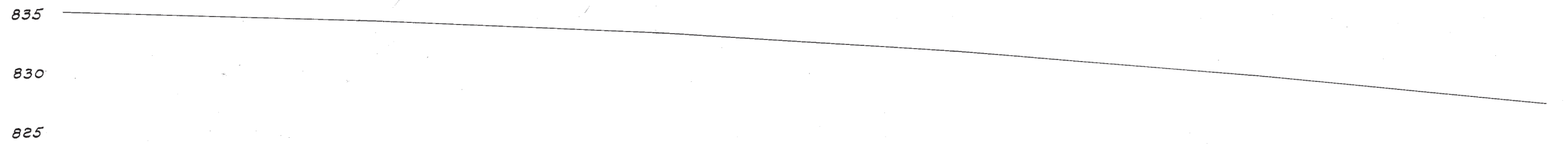
← Old Town

STA. 107+00
13.09



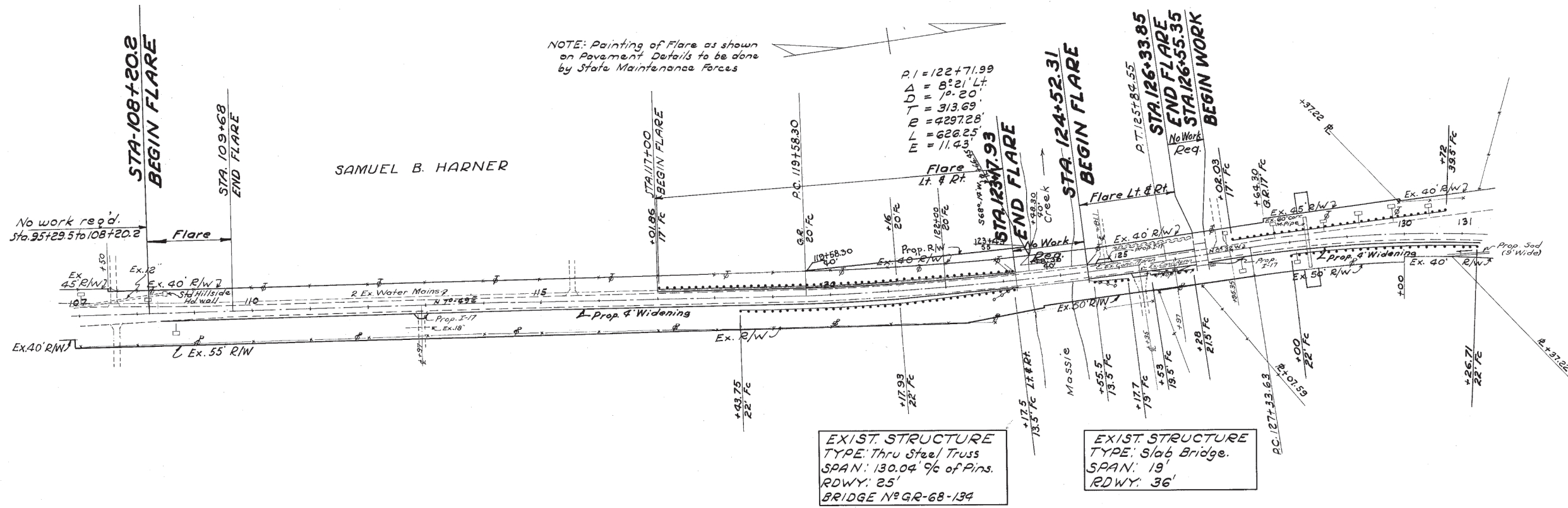
Bench Mark Sta. 102+08
Arrow head on Fire Hydrant 30' Lt E.
Elev. = 838.99

Profile shown is crown of existing Pavement.



835.59 102
834.92 103
833.82 104
832.25 105
830.12 106
827.68 107

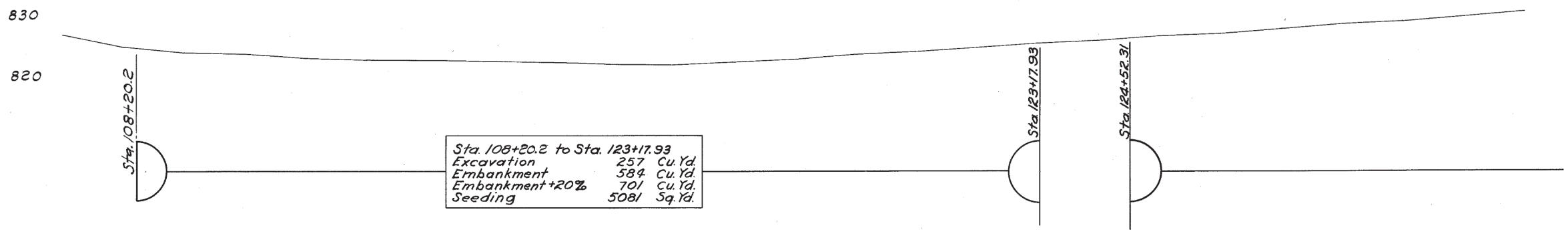
STA. 102+00 to STA. 107+00



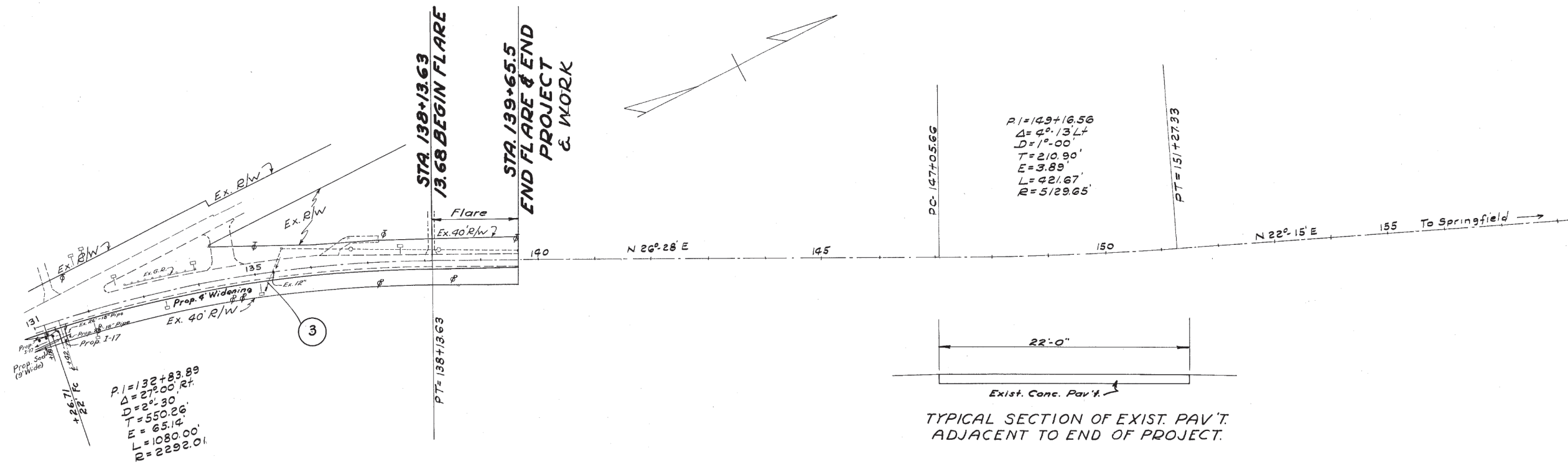
Bench Mark Sta. 108+52 Lt.
a Cut in N.E. Cor. E. Wing of Conc. Hd. wall.
Elev. = 823.96

Note: Exist. Guard Rail & Markers to be
Removed by State Maintenance Forces.

Note:
For Quantities See Sheet No. 4#15
For Flare & Drive Details See Sheet No. 17



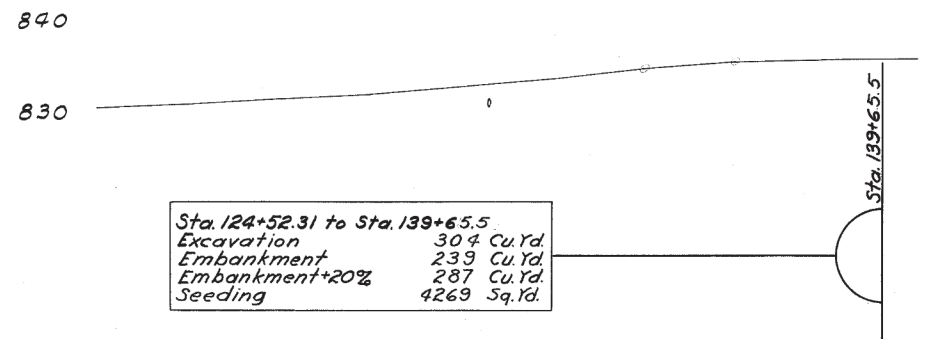
827.94	825.64	824.67	824.30	823.82	823.42	823.29	823.09	823.01	822.86	822.84	823.03	823.51	824.18	824.81	825.43	826.09	826.68	827.27	827.77	828.42	829.25	829.63	830.39	831.13
107	108	109	110	111	112	113	114	115	116	117	118	119	120	121	122	123	124	125	126	127	128	129	130	131



STRUCTURES ~ 20 FT. SPAN & UNDER

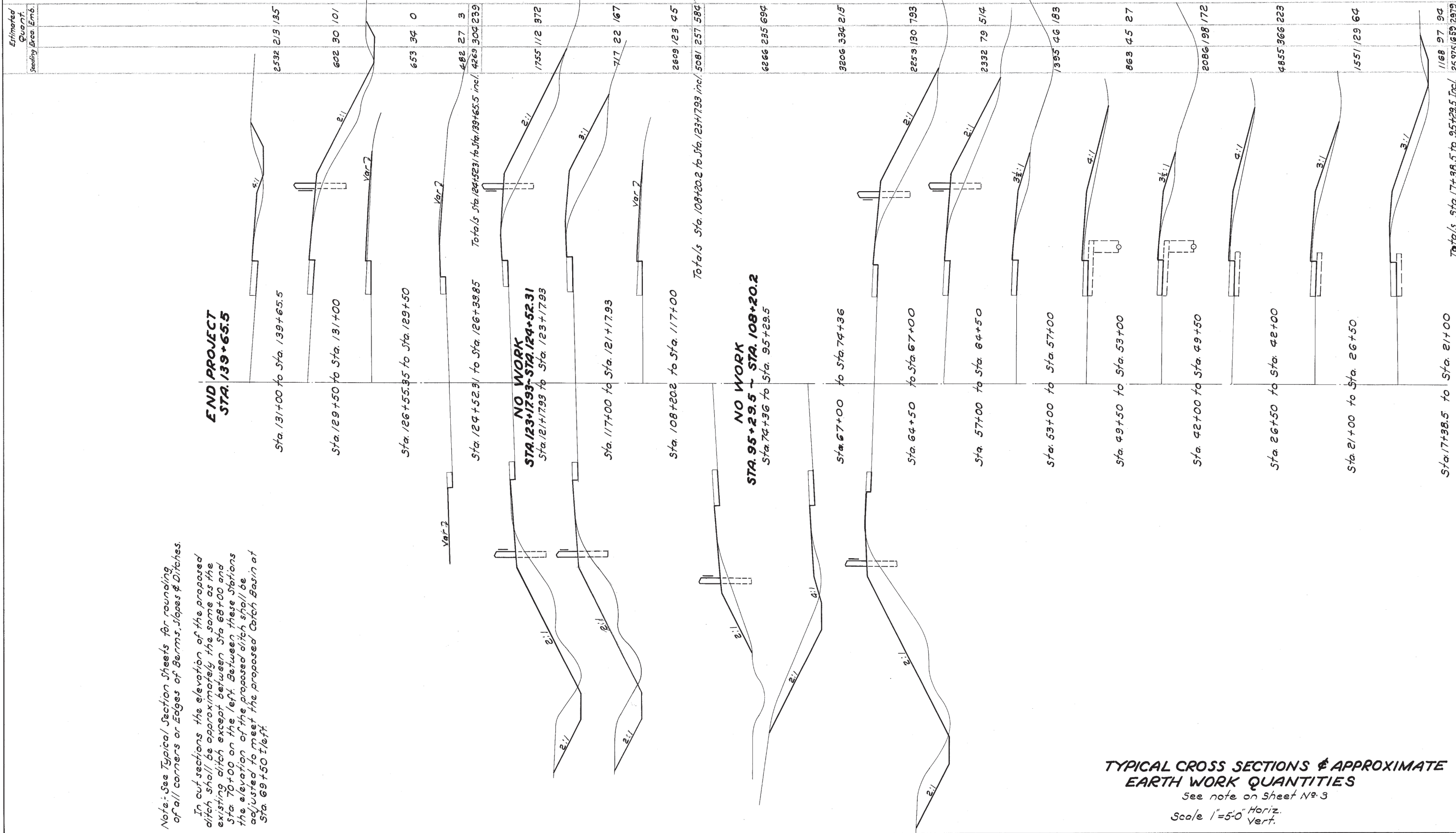
No	Station	Existing Structure			Proposed Work	See Sh't. No.
		Type	Size	Length		
3	135+31.5	Pipe	12"	71'-0"	Extend Ex. Culv. on Rt. of E	19

Note:
 For Quantities See Sheet No. 4 & 15
 For Flare & Drive Details See Sheet No. 17.



- 831.13
 - 831.76
 - 832.26
 - 832.89
 - 833.58
 - 834.51
 - 835.60
 - 836.33
 - 836.54
 - 836.69
- 131 132 133 134 135 136 137 138 139 140

GREENE COUNTY
GRE-68-(1137) (13.09-13.68)

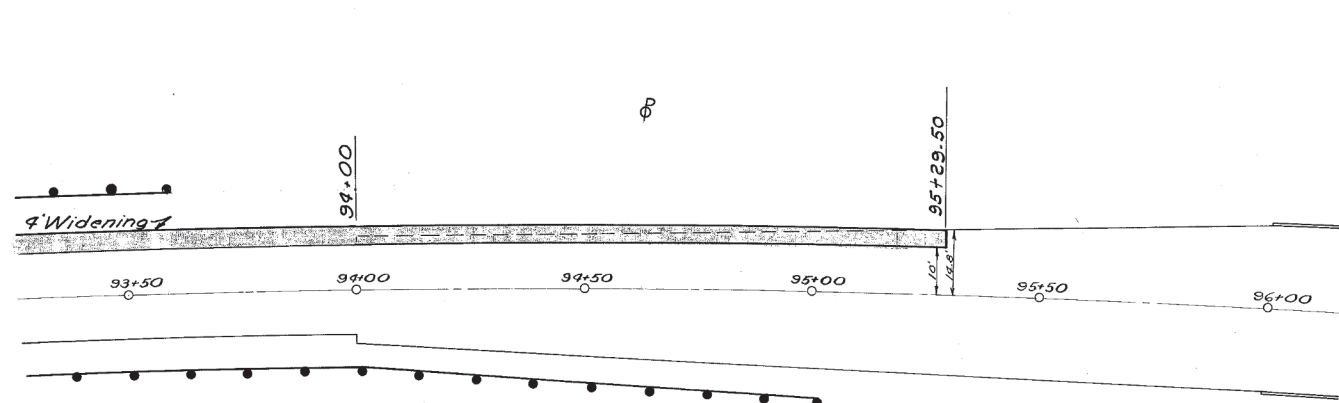
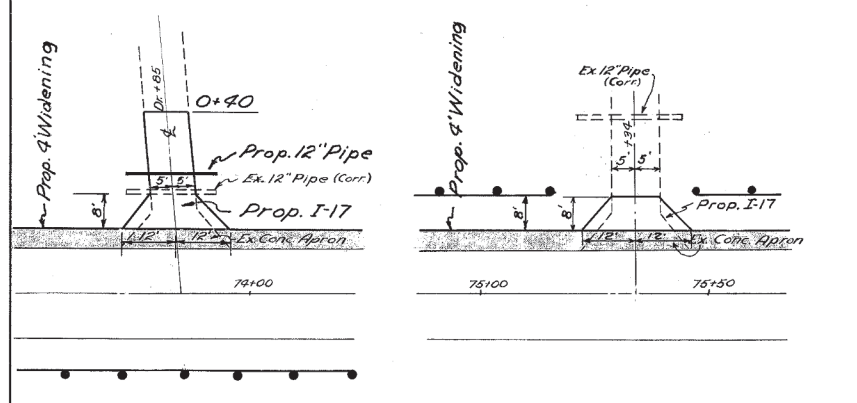
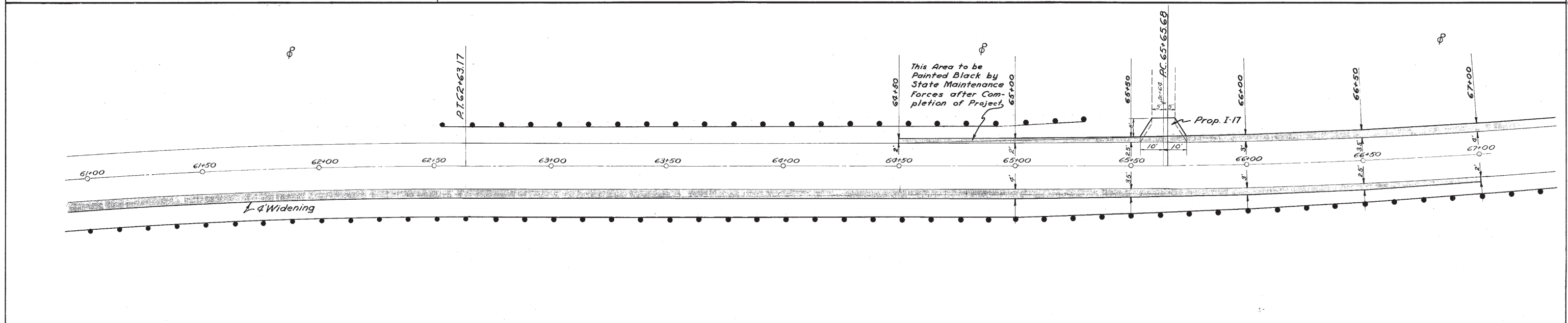
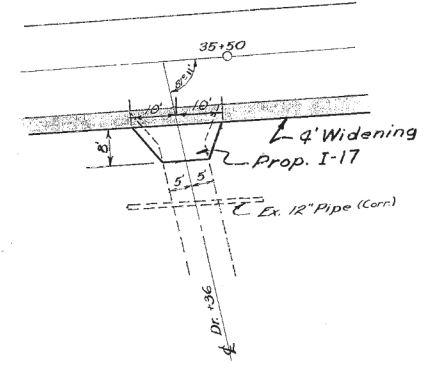
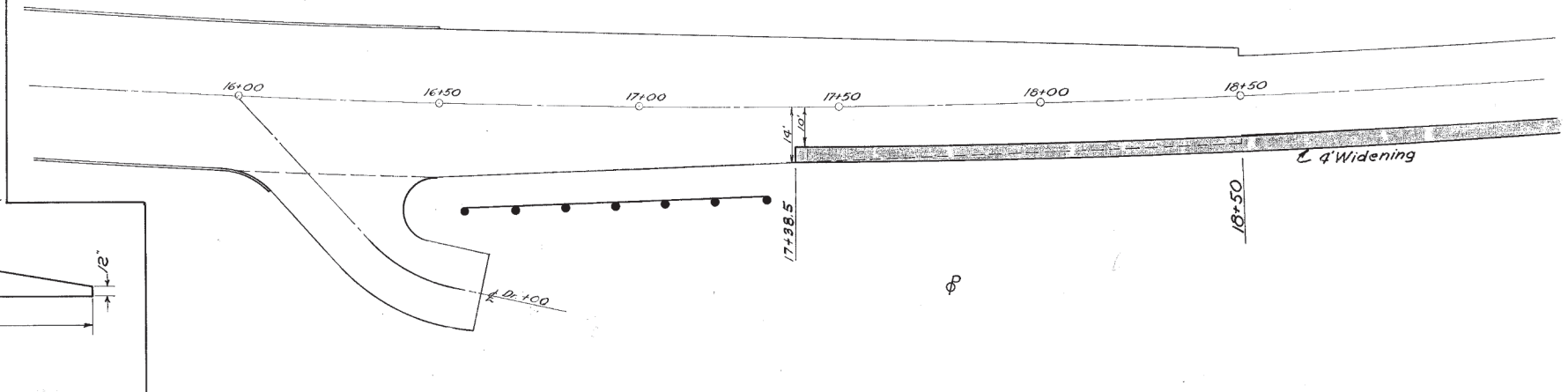
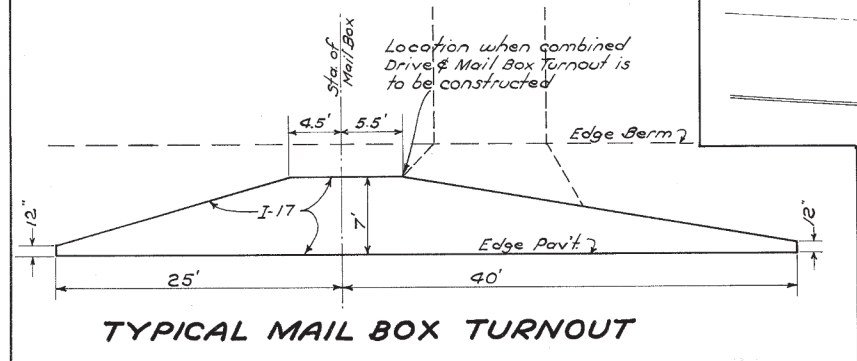


Note: See Typical Section Sheets for rounding of all corners or Edges of Berms, Slopes & Ditches.

In cut sections the elevation of the proposed ditch shall be approximately the same as the existing ditch except between Sta 68+00 and Sta 70+00 on the left. Between these Stations the elevation of the proposed ditch shall be adjusted to meet the proposed Catch Basin at Sta. 69+50 t/left.

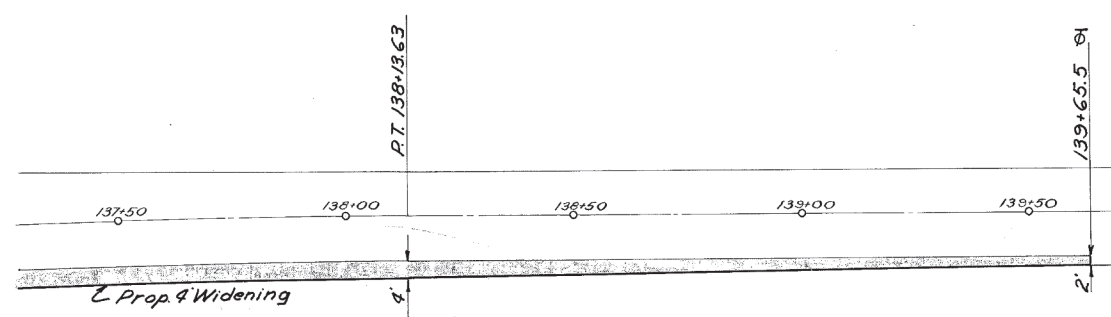
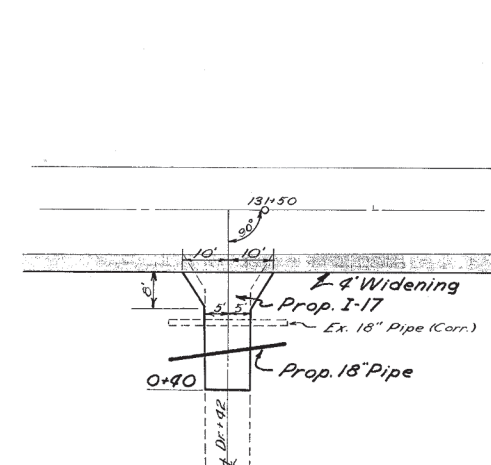
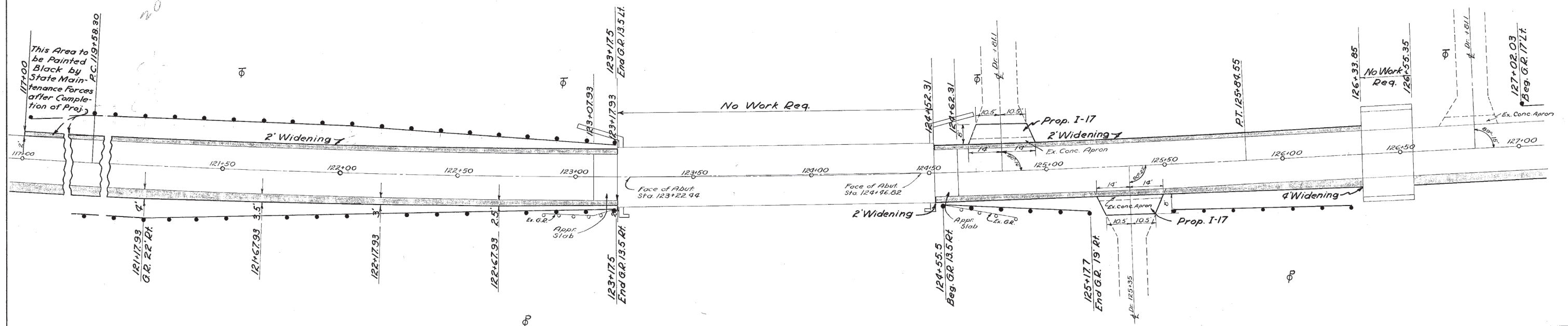
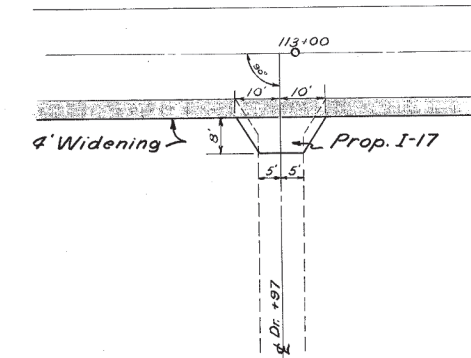
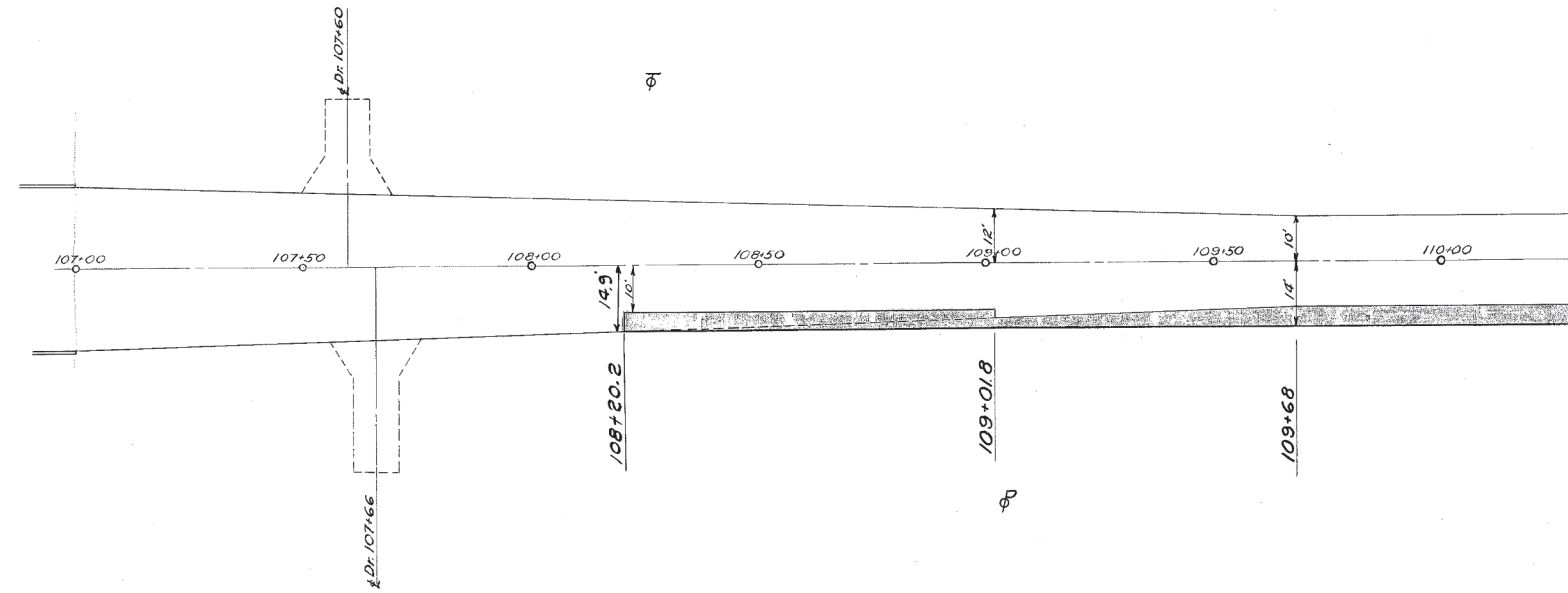
TYPICAL CROSS SECTIONS & APPROXIMATE EARTH WORK QUANTITIES
See note on Sheet No. 3
Scale 1"=5'-0" Horiz.
Vert.

Note: Where feasible, drives shall be combined with mail box turnouts in the manner shown and the quantities will be adjusted by the Engineer.



ESTIMATED QUANTITIES

Station to Station	9" Plain Conc. Pav't.	Pav't. Removal	Side Appr. & Berm Material	Sealing Only	Pipe Relaying for 12" Pipe	See Sheet No.
	Item T-70 Sq. Yd.	Item E-8 Sq. Yd.	Item I-17 Cu. Yd.	Item E-8 Lin. Ft.	Item E-8 Lin. Ft.	Item I-4 Lin. Ft.
Flare 17+38.50-18+50	49.8	37.8		116		4
Drive 35+36 Rt.			2			4
Flare 64+50-67+00	166.7			500		4
Drive 65+69 Lt.			2			4
Drive 73+85 Lt.		9.1	4		20	4
Drive 75+39 Lt.		9.3	2			4
Flare 94+00-95+29.5	57.8	44.4		134		4

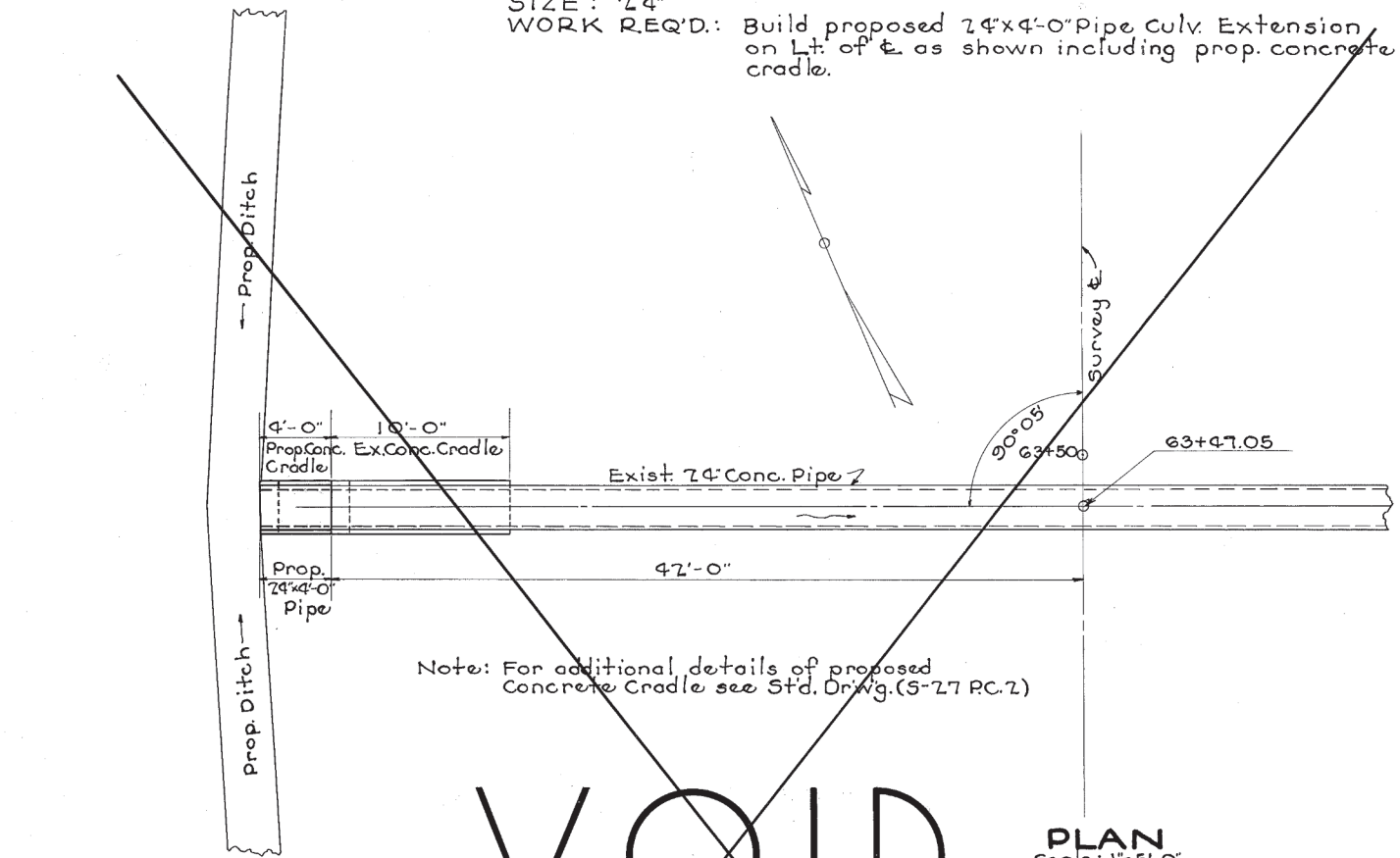


ESTIMATED QUANTITIES

Sta. to Sta.	9" Plain Conc. Pav't.	Pav't. Removal	Side Apprs. & Berm Material	Sealing Only	Pipe Removed for Re-use 18"	Relaying Pipe	See Sheet N ^o .
	Item T-70	Item E-8	Item I-17	Item E-8	Item E-12	Item I-6	
	Sq. Yd.	Sq. Yd.	Cu. Yd.	Lin. Ft.	Lin. Ft.	Lin. Ft.	
Flare 108+20.2-109+68	58.4	29.1		154			4
Dr. 112+97 Rt.			2				4
Flare 117+00-123+17.93	389.9			1240			4
Flare 124+52.31-126+33.85	100.9			367			4
Dr. 124+31.1 Lt.		12.6	2				4
Dr. 125+35 Rt.		12.5	2				4
Dr. 131+42 Rt.			4				4
Flare 138+13.63-139+65.5	50.6			154	26	26	4

CULVERT DATA

TYPE: Pipe Ext. Std. Drwg. (S-27 P.C. 2)
 SIZE: 24"
 WORK REQ'D.: Build proposed 24"x4'-0" Pipe Culv. Extension on Lt. of E. as shown including prop. concrete cradle.



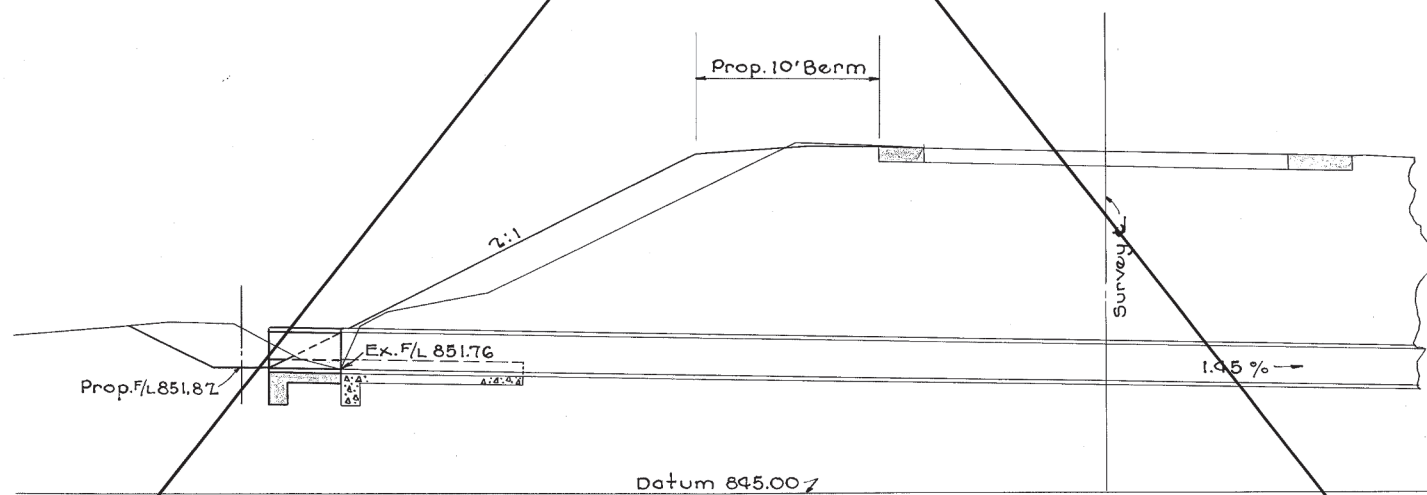
Note: For additional details of proposed Concrete Cradle see Std. Drwg. (S-27 P.C. 2)

VOID

PLAN
Scale: 1"=5'-0"

ESTIMATED QUANTITIES

Excavation for Structures	Item E-7	2	Cu.Yd.
Concrete for Structures (Class "E")	Item S-1	0.5	Cu.Yd.
24" Pipe for Roadway Culverts	Item S-27	4	Lin.Ft.



SECTION
Scale: 1"=5'-0"

STA. 63+47.05
PROP. PIPE CULV. EXTENSION (LT.)

Drawn By W.L.A.	Date 1-27-48
Checked By E.P.	Date 2-2-48
Approved By	

CULVERT DATA

TYPE: Pipe Std. Drwg. (I-8 C.B. 7-2-A & B)
 SIZE: 12"
 WORK REQ'D.: Adjust exist. std. No 7-2-A Catch Basin to grade as shown in "Section" below

FED. RD. DIVISION	STATE	PROJECT	FISCAL YEAR
2	OHIO	H.I.	1948

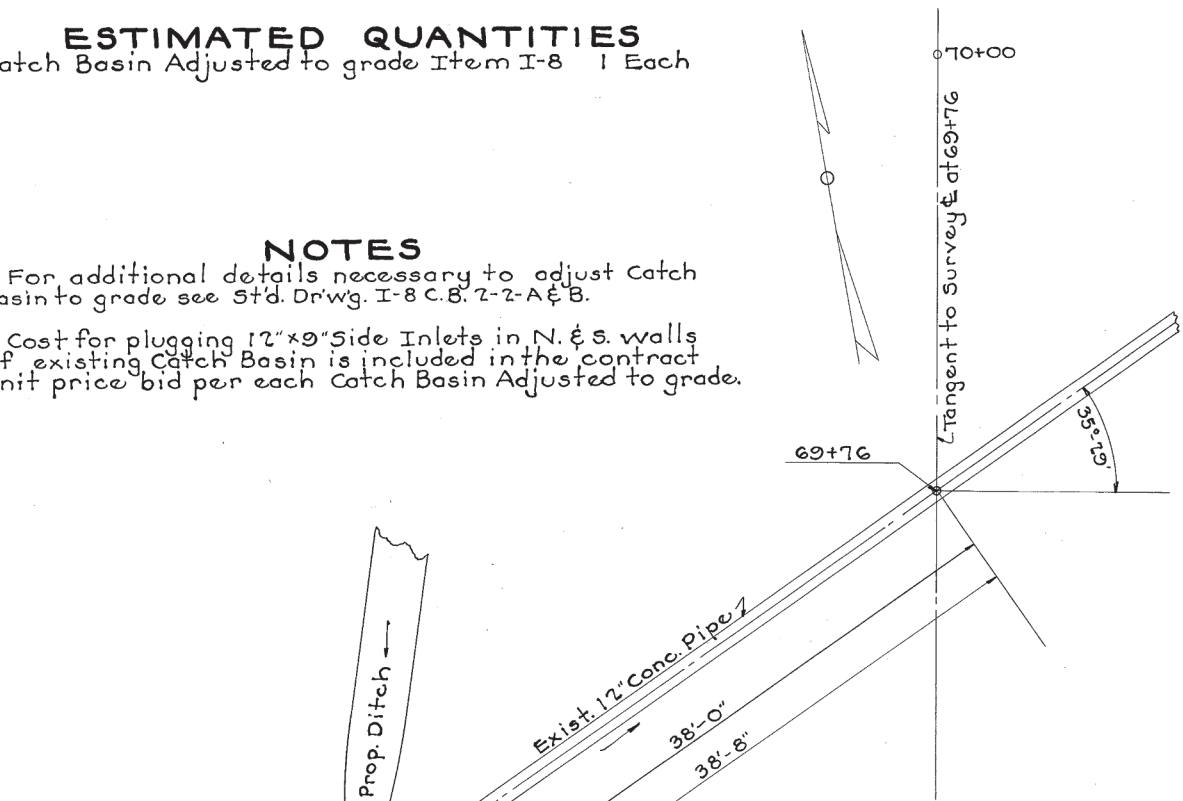
GREENE COUNTY
GRE-68-(11.37)(13.09-13.68)

ESTIMATED QUANTITIES
Catch Basin Adjusted to grade Item I-8 1 Each

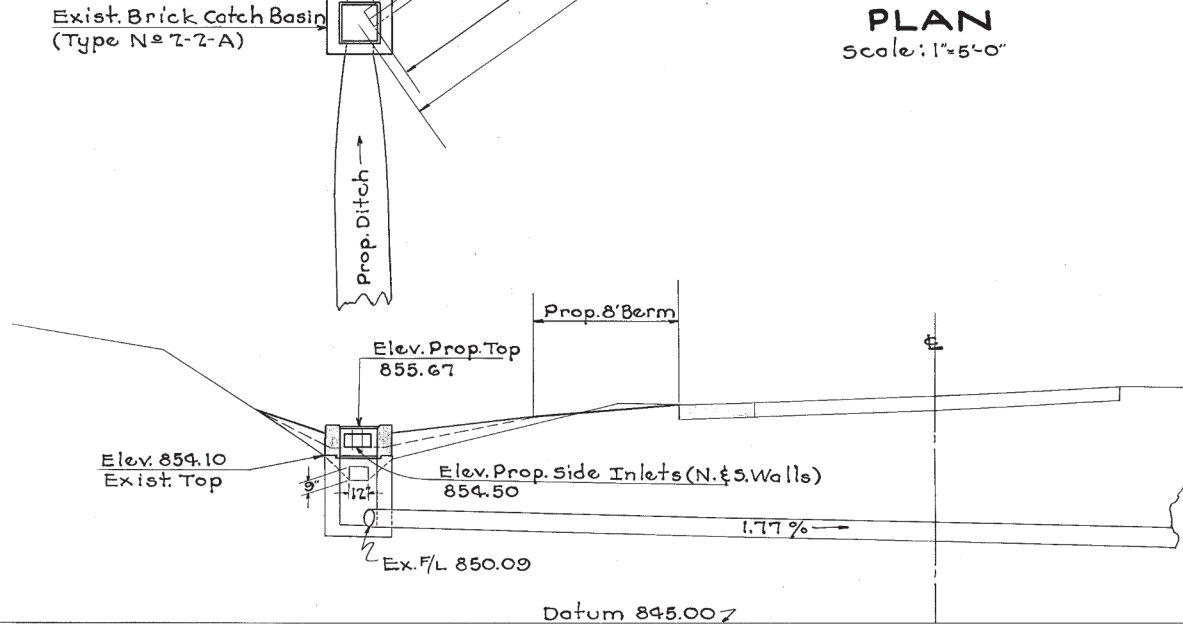
NOTES

For additional details necessary to adjust Catch Basin to grade see Std. Drwg. I-8 C.B. 7-2-A & B.

Cost for plugging 12"x9" Side Inlets in N. & S. walls of existing Catch Basin is included in the contract unit price bid per each Catch Basin Adjusted to grade.



PLAN
Scale: 1"=5'-0"



SECTION
Scale: 1"=5'-0"

STA. 69+76
EXIST. PIPE CULVERT

Drawn By W.L.A.	Date 1-27-48
Checked By E.P.	Date 2-2-48
Approved By	

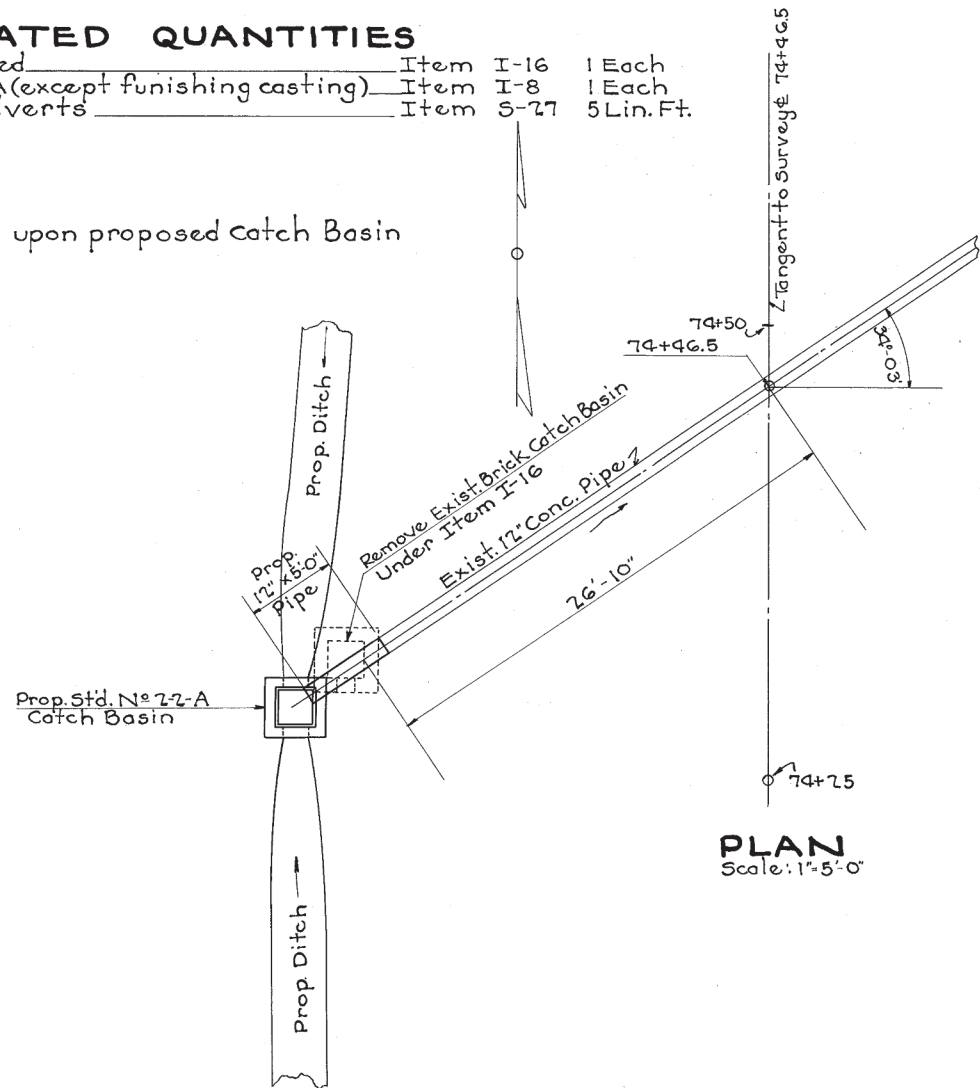
CULVERT DATA

TYPE: Pipe Ext. Std. Drwg. (I-8 C.B. 7-2-A & B)
 SIZE: 12"
 WORK REQ'D.: Remove existing No 2-2-A Catch Basin (brick) as indicated. Extend exist. 12" Pipe Culv. as shown with 12"x5'-0" Pipe on Lt. of ϕ . Build Prop. Std. No 2-2-A Catch Basin as shown.

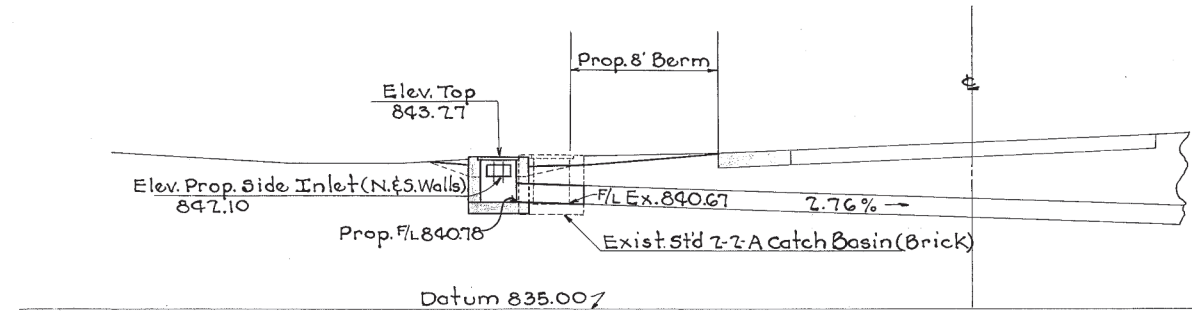
ESTIMATED QUANTITIES

Catch Basins Abandoned	Item I-16	1 Each
*Std. Catch Basin No 2-2-A (except finishing casting)	Item I-8	1 Each
12" Pipe for Roadway Culverts	Item S-27	5 Lin. Ft.

Note:
 * Place existing casting upon proposed Catch Basin



PLAN
Scale: 1"=5'-0"



SECTION
Scale: 1"=5'-0"

STA. 74+46.5
PROP. PIPE CULVERT EXT. (LT.)

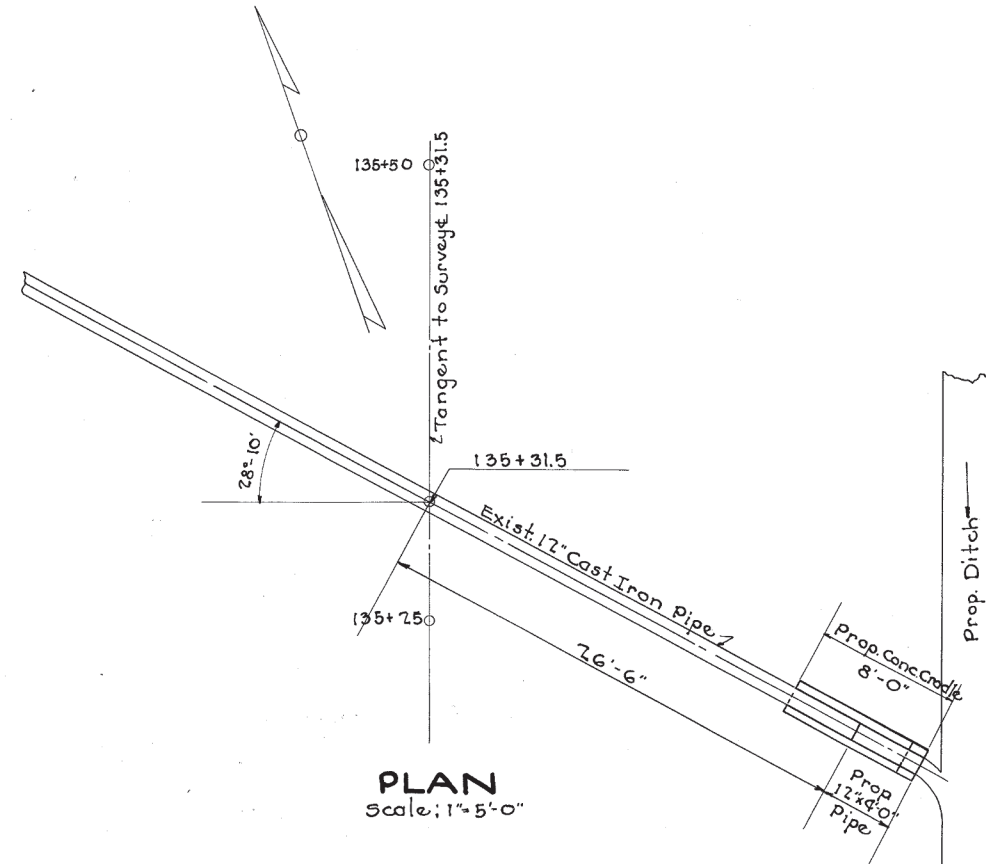
Drawn By W.L.A.	Date 1-28-48
Checked By E.P.	Date 2-2-48
Approved By	

CULVERT DATA

TYPE: PIPE EXT. Std. Drwg. (S-27 RC. 2)
 SIZE: 12"
 WORK REQ'D.: Build proposed 12"x4'-0" Pipe Culvert Extension on Rt. of ϕ as shown including prop. concrete cradle.

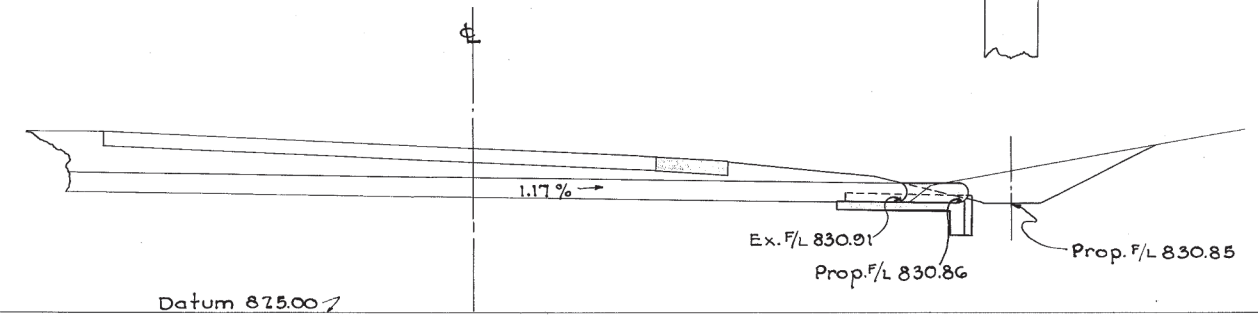
ESTIMATED QUANTITIES

Excavation for Structures	Item E-7	7 Cu. Yd.
Concrete for Structures, Class "E"	Item S-1	0.5 Cu. Yd.
12" Pipe for Roadway Culverts	Item S-27	4 Lin. Ft.



PLAN
Scale: 1"=5'-0"

Note:
 For additional details of proposed Concrete cradle see Std. Drwg (S-27 RC. 2)



SECTION
Scale: 1"=5'-0"

STA. 135+31.5
PROP. PIPE CULVERT EXT. (RT.)

Drawn By W.L.A.	Date 1-28-48
Checked By E.P.	Date 2-2-48
Approved By	