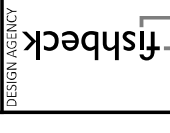
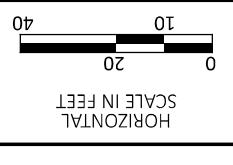


DESIGNER	JAL
REVIEWER	JAH
PROJECT ID	115388
SHEET TOTAL	P.07 22



PLAN AND PROFILE - US-68
 BEGIN PROJECT TO STA. 100+10

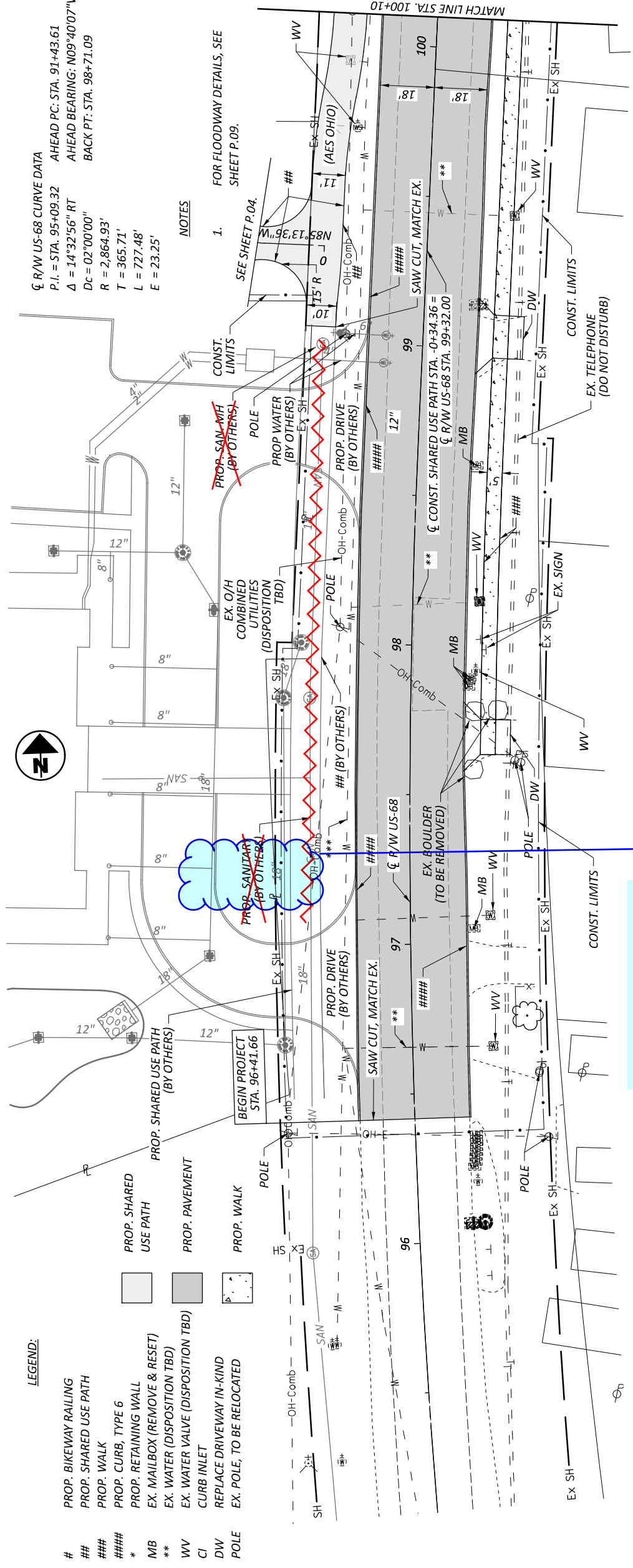


ϕ R/W US-68 CURVE DATA
 P.I. = STA. 95+09.32 AHEAD PC: STA. 91+43.61
 Δ = 14°32'56" RT AHEAD BEARING: N09°40'07"W
 Dc = 02'00"00" BACK PT: STA. 98+71.09
 R = 2,864.93'
 T = 365.71'
 L = 727.48'
 E = 23.25'

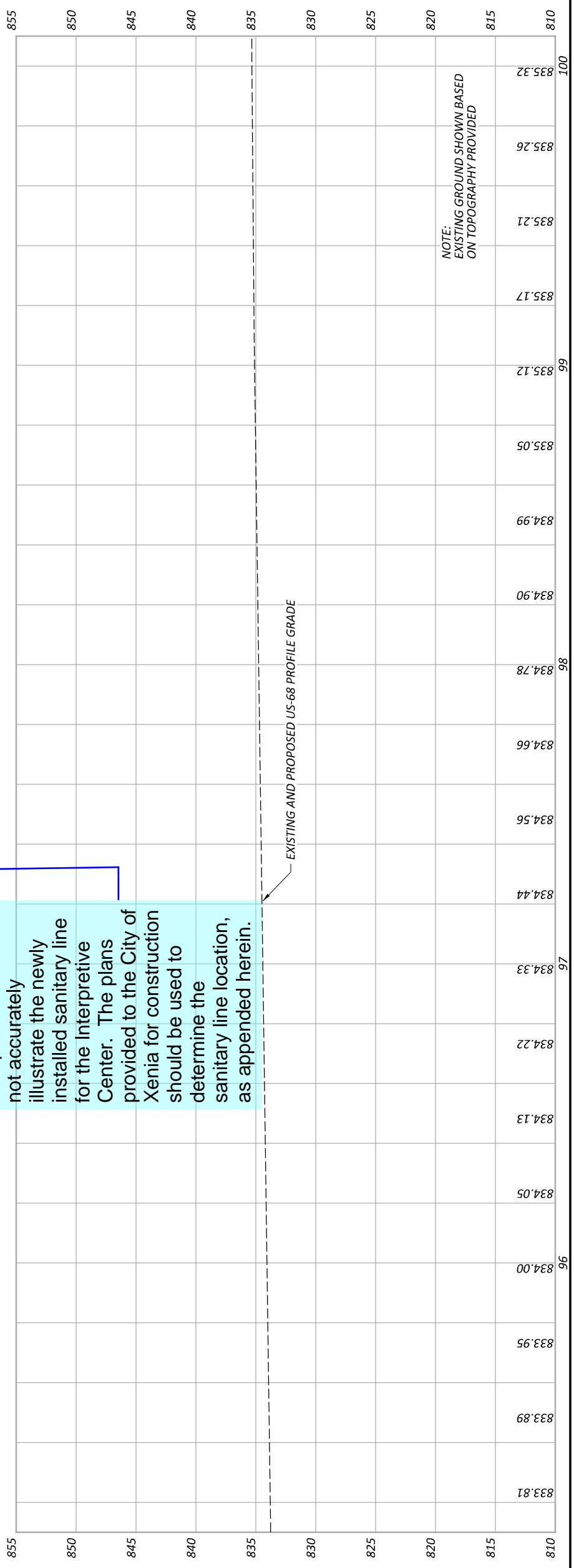
NOTES

1. FOR FLOODWAY DETAILS, SEE SHEET P.09.

SEE SHEET P.04.



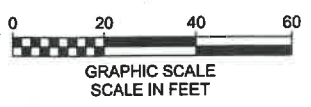
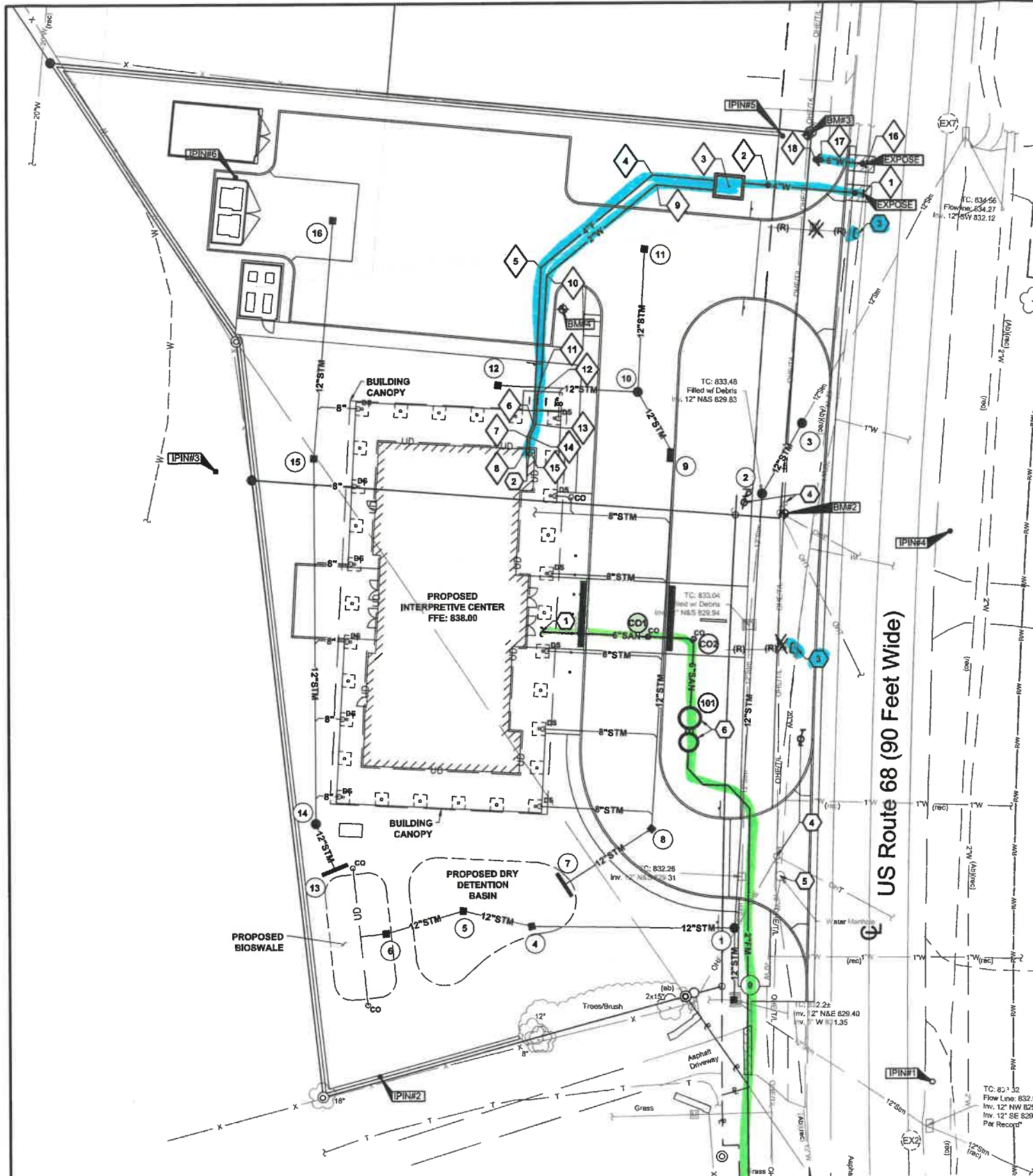
This plan sheet does not accurately illustrate the newly installed sanitary line for the Interpretive Center. The plans provided to the City of Xenia for construction should be used to determine the sanitary line location, as appended herein.



NOTE: EXISTING GROUND SHOWN BASED ON TOPOGRAPHY PROVIDED

LEGEND:

- # PROP. BIKEWAY RAILING
- ### PROP. SHARED USE PATH
- #### PROP. WALK
- * PROP. CURB, TYPE 6
- ##### PROP. RETAINING WALL
- MB EX. MAILBOX (REMOVE & RESET)
- ** EX. WATER (DISPOSITION TBD)
- WV EX. WATER VALVE (DISPOSITION TBD)
- CI CURB INLET
- DW REPLACE DRIVEWAY IN-KIND
- POLE EX. POLE, TO BE RELOCATED



WATER SERVICE COORDINATES				
NO.	TYPE	NORTHING	EASTING	EASTING AS-BUILT
1	20" X 4" TAPPING SLEEVE & VALVE	633061.66	1564522.69	
2	4" VALVE	633064.42	1564493.67	
3	METER PIT PER DETAIL F/C3.3	633064.10	1564461.42	
4	4" 45° HORZ. BEND	633067.84	1564458.00	
5	4" 45° HORZ. BEND	633039.38	1564423.51	
6	4" 22.5° HORZ. BEND	632991.27	1564420.94	
7	4" 22.5° HORZ. BEND	632987.20	1564418.99	
8	WATER SERVICE TERMINATION PER DETAIL A/C3.3	632983.42	1564418.79	
9	2" 45° HORZ. BEND	633064.74	1564458.95	
10	2" 45° HORZ. BEND	633036.93	1564425.25	
11	2" 11.25° HORZ. BEND	633005.48	1564423.57	
12	2" 11.25° HORZ. BEND	632999.89	1564422.15	
13	2" 22.5° HORZ. BEND	632991.08	1564421.68	
14	2" 22.5° HORZ. BEND	632987.04	1564419.74	
15	WATER SERVICE TERMINATION PER DETAIL A/C3.3	632983.38	1564419.55	
16	20" X 6" TAPPING SLEEVE & VALVE	633070.76	1564523.64	
17	6" VALVE	633072.09	1564509.90	
18	FIRE HYDRANT PER CITY OF XENIA STD. DWG. STD-103	633072.24	1564508.38	

SANITARY SEWER STRUCTURE COORDINATES				
Structure	TC	Northing	Easting	Easting As-Built
101	836.60	632900.10	1564468.69	
CO1	837.35	632925.31	1564455.99	
CO2	836.90	632924.56	1564469.99	

- CODED NOTES:**
- CAP AND MARK FOR FINAL CONNECTION BY PLUMBING CONTRACTOR.
 - WATER SERVICE TERMINATION PER DETAIL A/C3.2.
 - ABANDON EXISTING WATER TAP IN PLACE AND REMOVE EXISTING WATER SERVICE PIPING. CUT AND CAP EXISTING WATER SERVICE AT THE WATER MAIN.
 - RELOCATE EXISTING UTILITY POLE TO LOCATION SHOWN. COORDINATE WITH UTILITY COMPANY.
 - ADJUST TO FINISHED GRADE.
 - PROPOSED SANITARY LIFT STATION AND VALVE PIT PER DETAIL A/C4.4.

UTILITY LEGEND

EXISTING

REFER TO SHEET TS1

PROPOSED

- E UNDERGROUND ELECTRIC LINE
- T UNDERGROUND TELEPHONE LINE
- L UNDERGROUND LIGHTING CIRCUIT
- W WATER LINE
- STM STORM SEWER
- UD UNDERDRAIN
- SAN SANITARY SEWER
- CUT AND PLUG EXISTING UTILITY
- (AB)- ABANDON EXISTING UTILITY
- (R)- REMOVE EXISTING UTILITY
- GATE VALVE & CURB BOX
- FIRE DEPARTMENT CONNECTION
- CLEAN OUT
- MANHOLE
- REMOVE EX. STRUCTURE
- STRUCTURE NUMBER
- PROPOSED POWER POLE
- PROPOSED TELEPHONE/LIGHT POLE
- PAVEMENT REPLACEMENT PER DETAIL A/C3.2

- GENERAL NOTES:**
- OBTAIN ALL PERMITS AND PAY ALL FEES NECESSARY TO COMPLETE THE WORK SHOWN. CONTRACTOR SHALL INCLUDE THE FOLLOWING IN HIS BID FOR WATER LINE AND SANITARY SEWER FEES UNDER THE CORRESPONDING ALLOWANCE LISTED IN SPECIFICATION SECTION 01 21 00 ALLOWANCES:
 - DOMESTIC WATER CONNECTION CHARGE: \$9,322.00
 - SEWER CONNECTION CHARGE: \$11,031.00
 - 2" WATER METER CHARGE: \$950.00
 - WATER CONNECTION INSPECTION FEE: \$35
 - SEWER CONNECTION INSPECTION FEE: \$35
 - DIMENSIONS AND COORDINATES ARE FROM FACE OF CURB OR EXTERIOR FACE OF BUILDING, UNLESS OTHERWISE NOTED.
 - EXTEND UTILITIES TO WITHIN 5' OF FACE OF BUILDING, UNLESS OTHERWISE NOTED. COORDINATE EXACT LOCATION WITH PLUMBING CONTRACTOR. FINAL CONNECTION BY PLUMBING CONTRACTOR.
 - REFER TO SHEETS C2.1-C2.4 FOR STORM SEWER INFORMATION.
 - MAINTAIN MINIMUM 4'-6" COVER OVER ALL WATERLINES. REFER TO SHEET C3.2 FOR PROFILE.
 - MAINTAIN MINIMUM 18" VERTICAL CLEARANCE FROM THE OUTSIDE OF ANY WATERLINE PIPE TO THE OUTSIDE OF ANY STORM OR SANITARY SEWER.
 - PROVIDE THRUST BLOCKS OR RESTRAINED MECHANICAL JOINT PIPE AT EACH VALVE, TEE, FITTING, OR CHANGE IN DIRECTION OF WATERLINE.
 - ROOF DRAINS, FOUNDATION DRAINS, AND OTHER CLEAN WATER CONNECTIONS TO THE SANITARY SEWER ARE PROHIBITED.
 - CONNECTION TO EXISTING WATER MAINS SHALL NOT BE PERFORMED UNTIL THE NEW LINES HAVE BEEN SANITIZED AND ALL TESTS HAVE BEEN COMPLETED AS SPECIFIED BY THE CITY OF XENIA AND THESE CONTRACT DOCUMENTS.
 - ALL COORDINATES AND ELEVATIONS BASED ON SURVEY PERFORMED BY KORDA/NEMETH ENGINEERING DATED 10/28/2021. REFER TO SHEET TS1.
 - WHERE PLANS PROVIDE FOR A PROPOSED UTILITY TO BE CONNECTED TO, OR CROSS OVER, OR UNDER AN EXISTING UNDERGROUND UTILITY, THE CONTRACTOR SHALL LOCATE THE EXISTING PIPES OR UTILITIES, BOTH AS TO LINE AND GRADE BEFORE STARTING TO LAY THE PROPOSED UTILITY. THESE LOCATIONS ARE NOTED THUS: EXPOSE. IF IT IS DETERMINED THAT THE ELEVATION OF THE EXPOSED UTILITY DIFFERS FROM THE PLAN ELEVATION, RESULTS IN A CHANGE IN THE PLAN SEWER SLOPE, OR WILL INTERSECT AN EXISTING UTILITY AS SHOWN ON THE PLAN, THE ENGINEER SHALL BE NOTIFIED BEFORE STARTING CONSTRUCTION OF ANY PORTION OF THE PROPOSED UTILITY WHICH WILL BE AFFECTED BY THE VARIANCE IN THE EXISTING ELEVATIONS.
 - SUPPORT AND PROTECT ALL UTILITIES EXPOSED DURING EXCAVATION AND TRENCHING.
 - ANY REQUIRED WATERLINE SHUT-DOWNS SHALL BE COORDINATED WITH THE OWNER AND/OR THE CITY.
 - PERFORM WATER AND SANITARY WORK IN ACCORDANCE WITH CITY OF XENIA MATERIALS AND CONSTRUCTION SPECIFICATIONS AND STANDARD CONSTRUCTION DRAWINGS. IN CASE OF DISCREPANCY BETWEEN CITY OF XENIA STANDARDS AND PROJECT SPECIFICATIONS, CITY OF XENIA STANDARDS SHALL GOVERN.

REVISIONS:

08.30.2022	- UTILITY PERMIT SUBMISSION
09.08.2022	- UTILITY PERMIT 2ND SUBMISSION

KORDA
KORDA NEMETH ENGINEERING
1650 WATERMARK DRIVE
SUITE 200
COLUMBUS, OHIO 43215

DRAWN BY: JDB
DESIGNED BY: JDB
CHECKED BY: CMF
PROJECT NUMBER: 2021-0003

CONSTRUCTION DOCUMENTS

FOR OFFICIAL USE ONLY - Infrastructure Record
This document is an infrastructure record pursuant to Ohio Revised Code 148.433(A). Therefore, it is not a public record and its authorized use, copying or distribution is prohibited.

ENGINEERING
Ohio Department of Natural Resources

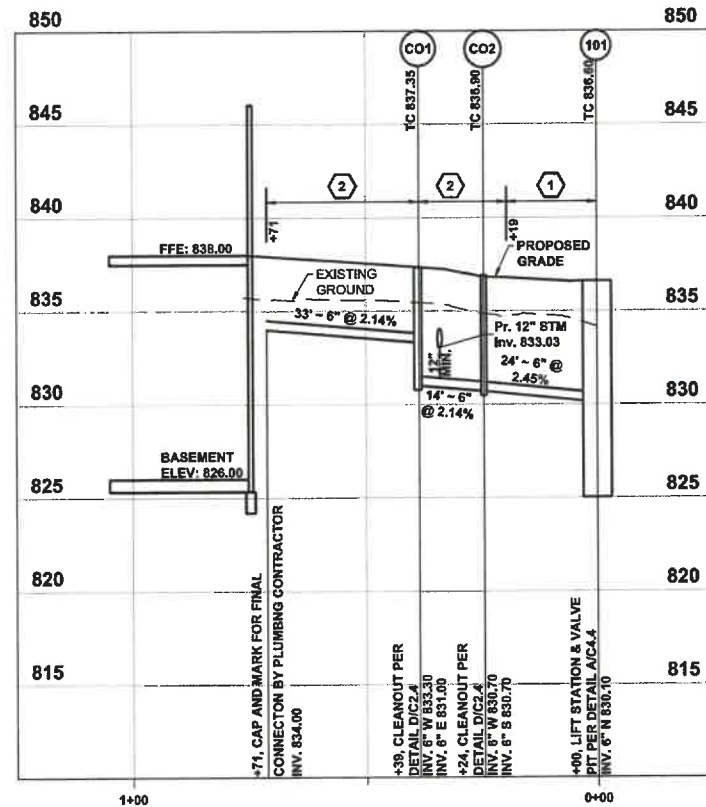
**HISTORIC OLDTOWN
NEW INTERPRETIVE CENTER
1575 US-68, XENIA, OHIO 45385**

DESIGNED BY:	JDB	JOB NUMBER:	DNR-210003
DRAWN BY:	JDB	SCALE:	AS NOTED
CHECKED BY:	CMF	PERMIT DATE:	02.25.2022
APPROVED BY:	XX	DRAWING DATE:	08.30.2022

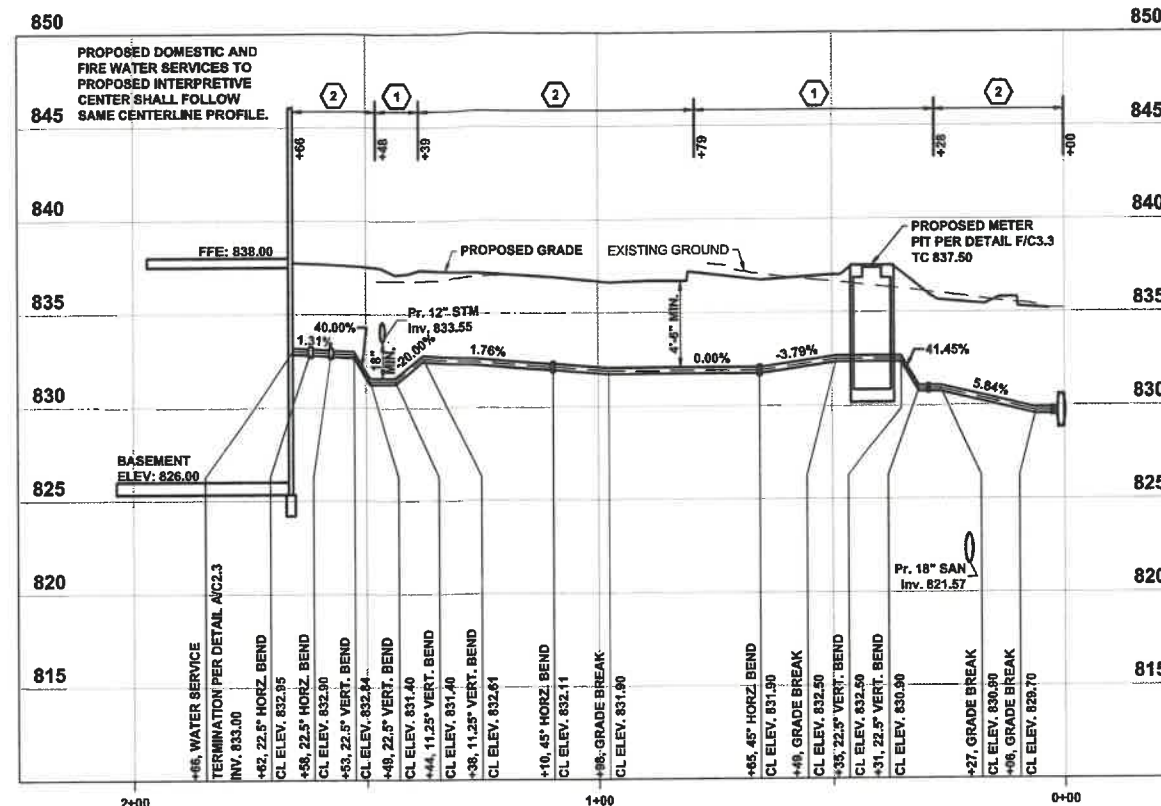
UTILITY PLAN

SHEET NO.
C3.1

14
20

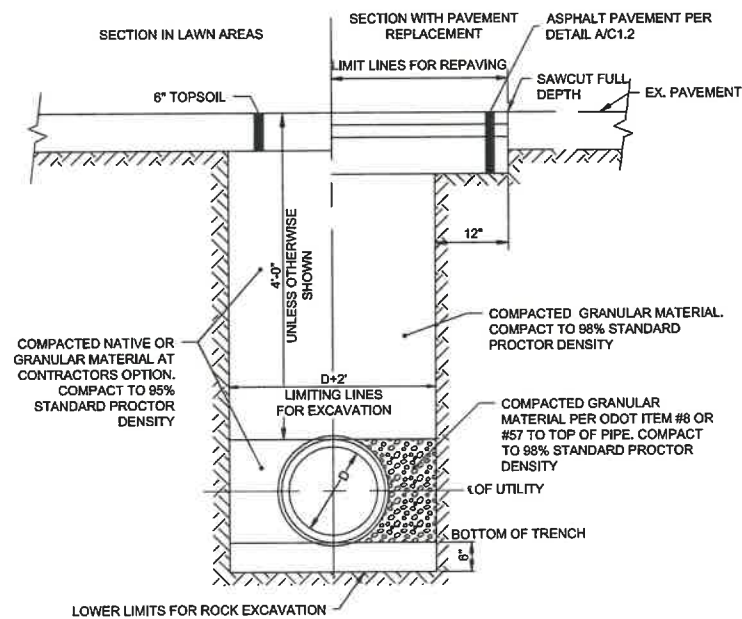


SANITARY SERVICE Profile
Scale: 1"=20' Horiz. 1"=5' Vert.



FIRE & DOMESTIC WATER SERVICE Profile
Scale: 1"=20' Horiz. 1"=5' Vert.

- CODED NOTES:**
- BACKFILL WITH COMPACTED BACKFILL TYPE D PER SPECIFICATION SECTION 31 00 00 AND 31 23 33.
 - BACKFILL WITH COMPACTED GRANULAR BACKFILL TYPE A OR J PER SPECIFICATION SECTION 31 00 00 AND 31 23 33.



A **DETAIL**
TYPICAL WATER LINE & SANITARY FORCE MAIN TRENCH N.T.S.

REVISIONS
08.30.2022 - UTILITY PERMIT SUBMISSION
09.08.2022 - UTILITY PERMIT 2ND SUBMISSION

KORDA
KORDA NEMETH ENGINEERING
1650 WATERMARK DRIVE
SUITE 200
COLUMBUS, OHIO 43215
DRAWN BY: JDB
DESIGNED BY: JDB
CHECKED BY: CMF
PROJECT NUMBER: 2021-0003

CONSTRUCTION DOCUMENTS

FOR OFFICIAL USE ONLY - Infrastructure Record
This document is an infrastructure record pursuant to Ohio Revised Code 149.433(A). Therefore, it is not a public record and its authorized use, copying or distribution is prohibited.



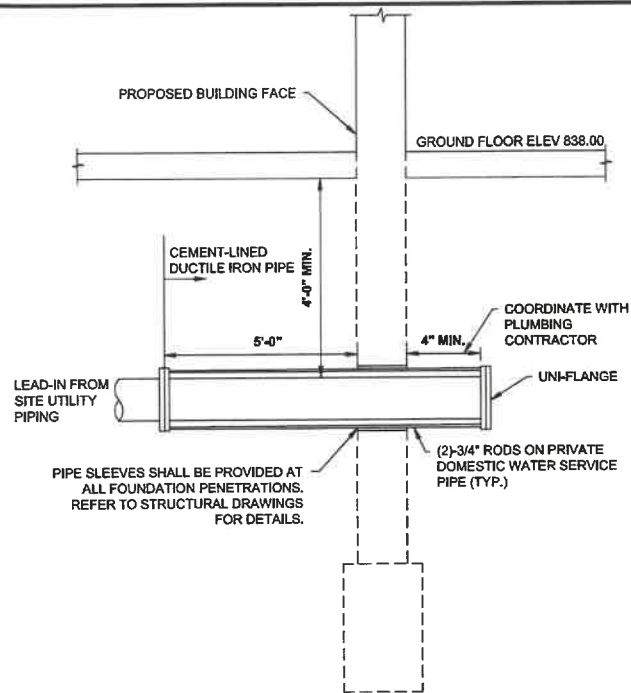
HISTORIC OLDTOWN
NEW INTERPRETIVE CENTER
1575 US-68, XENIA, OHIO 45385

DESIGNED BY:	JDB	JOB NUMBER:	DNR-210003
DRAWN BY:	JDB	SCALE:	AS NOTED
CHECKED BY:	CMF	PERMIT DATE:	02.25.2022
APPROVED BY:	XX	DRAWING DATE:	08.30.2022

UTILITY PROFILES & DETAILS

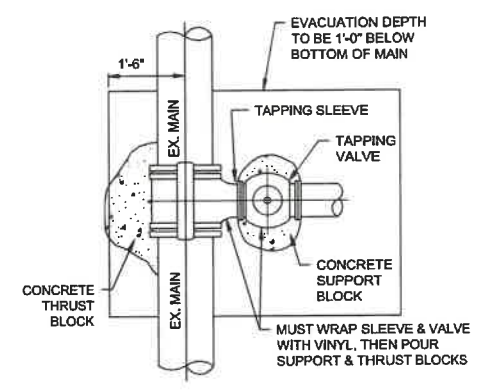
SHEET NO. **C3.2**





NOTES:
 1. ALL WORK WITHIN BUILDING SHALL BE PER PLUMBING SPECIFICATIONS.
 2. COORDINATE FOOTING LOCATIONS AND SLEEVES WITH FOUNDATION CONSTRUCTION.
 3. COORDINATE FINAL LOCATIONS AND ELEVATIONS WITH PLUMBING CONTRACTOR.
 4. PROVIDE CEMENT-LINED DUCTILE IRON PIPE BEGINNING 5'-0" OUTSIDE OF THE BUILDING AND CONTINUING THROUGH THE FLOOR PENETRATION. CAP WATER SERVICE ABOVE GROUND FOR FUTURE CONNECTION BY THE PLUMBING CONTRACTOR.

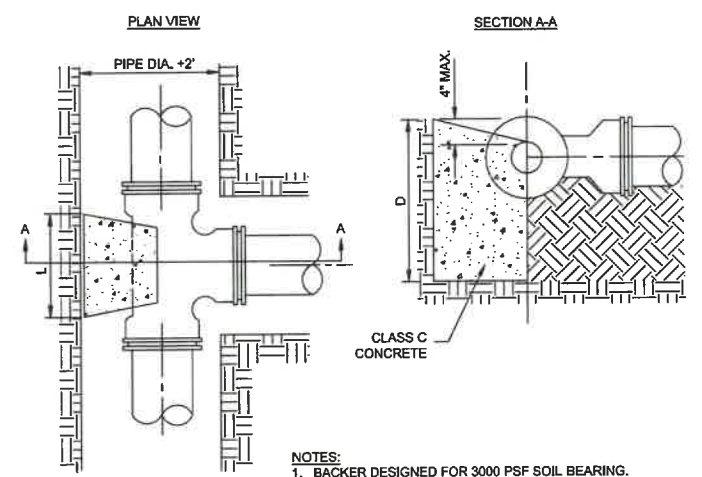
A DETAIL WATER SERVICE TERMINATION (BASEMENT) N.T.S.



B DETAIL MAIN CONNECTION DETAIL N.T.S.

RUN	BRANCH																															
	3"				4"				6"				8"				12"				16"				20"				24"			
	L'	D'	VC.F.		L'	D'	VC.F.		L'	D'	VC.F.		L'	D'	VC.F.		L'	D'	VC.F.		L'	D'	VC.F.		L'	D'	VC.F.					
3"	12	5	0.5																													
4"	10	6	0.5	11	8	0.8																										
6"	9	7	0.5	11	8	0.8	18	12	1.8																							
8"	8	8	0.5	10	9	0.7	18	12	1.9	23	16	3.5																				
12"	6	12	0.6	8	12	0.8	18	12	1.9	23	16	3.5	38	22	8.7																	
16"	6	16	0.8	6	16	0.8	14	16	2.0	20	18	3.3	36	23	8.7	49	30	13.6														
20"							11	20	1.9	18	20	3.5	35	24	8.7	46	32	13.6	60	38	26.5											
24"							9	24	1.8	15	24	3.3	30	26	8.7	42	36	14.0	54	42	26.3	68	48	45.4								

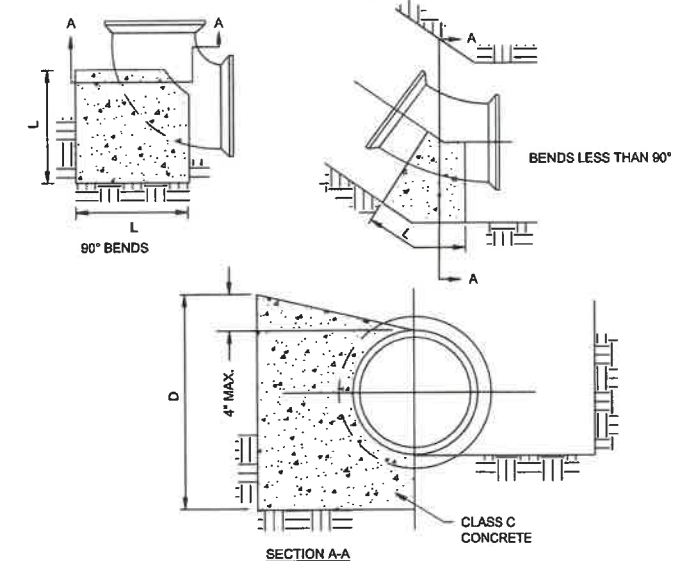
STEEL WILL BE USED AS REQUIRED BY THE ENGINEER.



C DETAIL BACKING FOR TEES N.T.S.

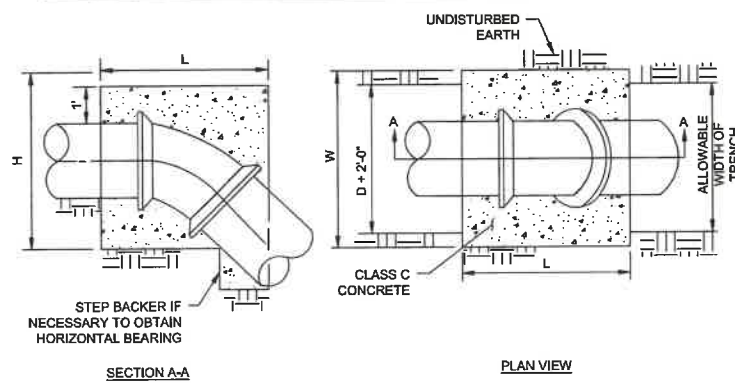
SIZE OF PIPE	DEGREE OF BEND															
	11-1/4"				22-1/2"				45°				90°			
	L'	D'	VC.F.		L'	D'	VC.F.		L'	D'	VC.F.		L'	D'	VC.F.	
3"	4	3	0.1		6	4	0.2	10	4	0.3	10	4	0.3			
4"	5	4	0.2		9	5	0.4	14	5	0.6	14	5	0.6			
6"	8	6	0.5		12	7	0.7	20	8	1.4	18	9	1.7			
8"	9	8	0.7		16	9	1.4	24	12	2.7	25	11	4.0			
12"	14	12	1.8		24	14	3.6	38	18	6.8	32	18	10.7			
16"	18	16	3.4		32	18	6.7	36	32	13.4	41	26	25.6			

STEEL WILL BE USED AS REQUIRED BY ENGINEER

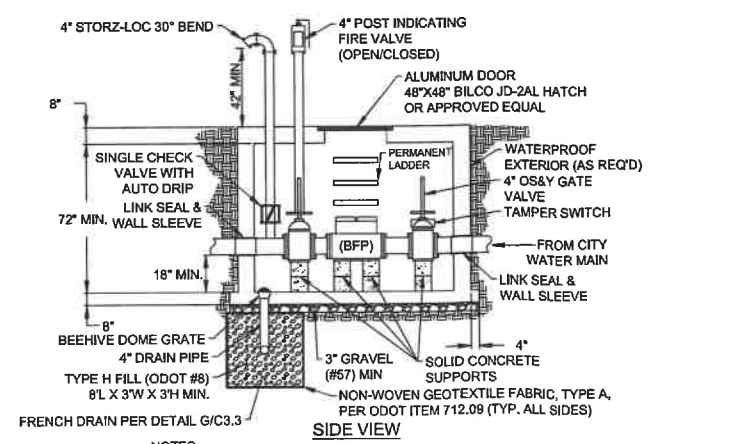
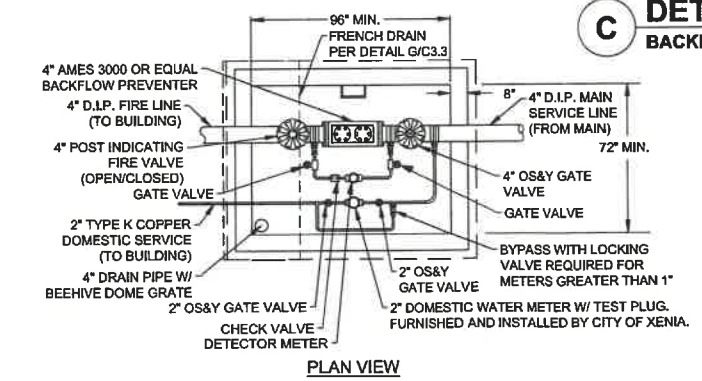


D DETAIL BACKING FOR BENDS [HORIZONTAL & VERTICAL SAG] N.T.S.

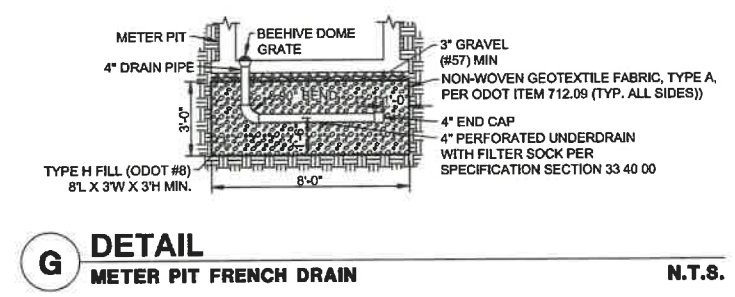
SIZE OF PIPE	DEGREE OF BEND															
	11-1/4"				22-1/2"				45°				90°			
	L'	W'	H'	VOL.	L'	W'	H'	VOL.	L'	W'	H'	VOL.	L'	W'	H'	VOL.
3"	12	18	12	1.5	13	25	16	3.0	18	30	19	5.9	25	30	24	10.4
4"	12	24	16	2.6	16	30	18	5.0	22	36	24	11.0	27	48	25	18.7
6"	12	48	18	6.0	15	43	36	13.4	30	55	24	22.9	37	54	36	41.6
8"	12	63	24	10.5	18	57	34	20.2	36	57	33	39.2	47	60	46	75.0
12"	20	54	36	22.6	37	62	37	49.0	48	62	51	87.9	66	66	66	166.4
16"	31	65	38	44.3	60	65	39	88.1	65	65	65	159.2				



E DETAIL BACKING FOR VERTICAL BENDS [LOWER BENDS ONLY] N.T.S.



F DETAIL METER PIT PER CITY OF XENIA STD-109 (MODIFIED) N.T.S.



G DETAIL METER PIT FRENCH DRAIN N.T.S.

REVISIONS:	
08.30.2022	- UTILITY PERMIT SUBMISSION
09.06.2022	- UTILITY PERMIT 2ND SUBMISSION

KORDA
 KORDA NEMETH ENGINEERING
 1650 WATERMARK DRIVE
 SUITE 200
 COLUMBUS, OHIO 43215
 DRAWN BY: JDB
 DESIGNED BY: JDB
 CHECKED BY: CMF
 PROJECT NUMBER: 2021-0003

CONSTRUCTION DOCUMENTS

FOR OFFICIAL USE ONLY - Infrastructure Record
 This document is an infrastructure record pursuant to Ohio Revised Code 149.433(A). Therefore, it is not a public record and its authorized use, copying or distribution is prohibited.

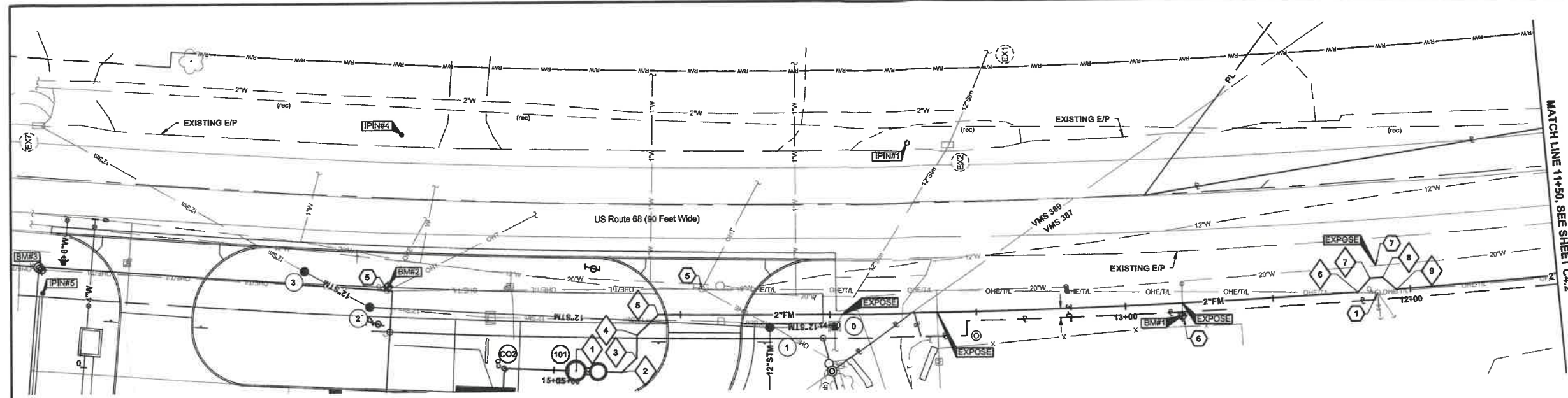


HISTORIC OLDTOWN
NEW INTERPRETIVE CENTER
 1575 US-68, XENIA, OHIO 45385

DESIGNED BY:	JDB	JOB NUMBER:	DNR-210003
DRAWN BY:	JDB	SCALE:	AS NOTED
CHECKED BY:	CMF	PERMIT DATE:	02.25.2022
APPROVED BY:	XX	DRAWING DATE:	08.30.2022

UTILITY DETAILS

SHEET NO.
C3.3
 15
 20



UTILITY LEGEND

EXISTING

REFER TO SHEET TS1

PROPOSED

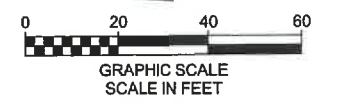
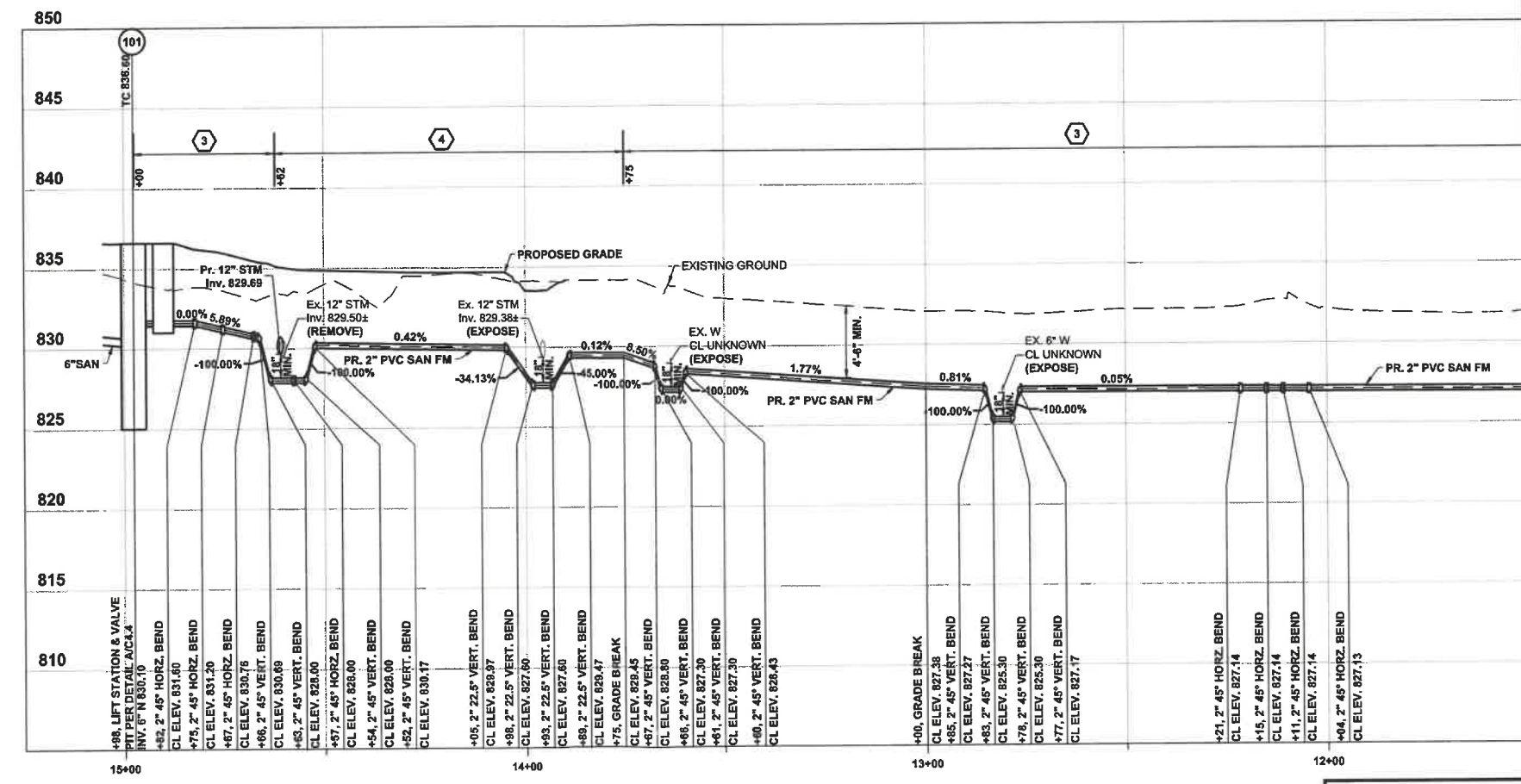
- SAN SANITARY SEWER
- FM SANITARY FORCE MAIN
- CUT AND PLUG EXISTING UTILITY
- (AB)- ABANDON EXISTING UTILITY
- (R)- REMOVE EXISTING UTILITY
- LIFT STATION PER DETAIL A/C4.4
- (101) STRUCTURE NUMBER

- GENERAL NOTES:**
- OBTAIN ALL PERMITS AND PAY ALL FEES NECESSARY TO COMPLETE THE WORK SHOWN.
 - MAINTAIN MINIMUM 18" VERTICAL CLEARANCE FROM THE OUTSIDE OF ANY WATERLINE PIPE TO THE OUTSIDE OF SANITARY SEWER.
 - ROOF DRAINS, FOUNDATION DRAINS, AND OTHER CLEAN WATER CONNECTIONS TO THE SANITARY SEWER ARE PROHIBITED. ALL COORDINATES AND ELEVATIONS BASED ON SURVEY PERFORMED BY KORDA/NEMETH ENGINEERING DATED 10/26/2021. REFER TO SHEET TS1.
 - WHERE PLANS PROVIDE FOR A PROPOSED UTILITY TO BE CONNECTED TO, OR CROSS OVER, OR UNDER AN EXISTING UNDERGROUND UTILITY, THE CONTRACTOR SHALL LOCATE THE EXISTING PIPES OR UTILITIES, BOTH AS TO LINE AND GRADE BEFORE STARTING TO LAY THE PROPOSED UTILITY. THESE LOCATIONS ARE NOTED THUS: EXPOSE. IF IT IS DETERMINED THAT THE ELEVATION OF THE EXPOSED UTILITY DIFFERS FROM THE PLAN ELEVATION, RESULTS IN A CHANGE IN THE PLAN SEWER SLOPE, OR WILL INTERSECT AN EXISTING UTILITY AS SHOWN ON THE PLAN, THE ENGINEER SHALL BE NOTIFIED BEFORE STARTING CONSTRUCTION OF ANY PORTION OF THE PROPOSED UTILITY WHICH WILL BE AFFECTED BY THE VARIANCE IN THE EXISTING ELEVATIONS.
 - SUPPORT AND PROTECT ALL UTILITIES EXPOSED DURING EXCAVATION AND TRENCHING.
 - MAINTAIN MINIMUM 4'-6" COVER OVER SANITARY FORCE MAIN. PERFORM SANITARY WORK IN ACCORDANCE WITH CITY OF XENIA MATERIALS AND CONSTRUCTION SPECIFICATIONS AND STANDARD CONSTRUCTION DRAWINGS. IN CASE OF DISCREPANCY BETWEEN CITY OF XENIA STANDARDS AND PROJECT SPECIFICATION, CITY OF XENIA STANDARDS SHALL GOVERN.
 - PROVIDE MAINTENANCE OF TRAFFIC IN ACCORDANCE WITH THE OHIO MANUAL OF UNIFORM TRAFFIC CONTROL DEVICES (OMUTCD).

- CODED NOTES:**
- SUPPORT EXISTING UTILITY POLE AS NECESSARY DURING INSTALLATION OF SANITARY SEWER. COORDINATE WITH POLE OWNER.
 - SUPPORT AND PROTECT EXISTING HEADWALL TO REMAIN.
 - BACKFILL WITH COMPACTED BACKFILL TYPE D PER SPECIFICATION SECTION 31 00 00 AND 31 23 33.
 - BACKFILL WITH COMPACTED GRANULAR BACKFILL TYPE A OR J PER SPECIFICATION SECTION 31 00 00 AND 31 23 33.
 - UTILITY POLE TO BE RELOCATED.
 - PROTECT AND SUPPORT EXISTING FIRE HYDRANT.
 - CONTRACTOR SHALL FIELD VERIFY HORIZONTAL LOCATION AND ELEVATION OF EXISTING 20" WATER MAIN PRIOR TO COMMENCING WORK ON SANITARY FORCE MAIN INSTALLATION. IMMEDIATELY NOTIFY THE ENGINEER IF WATER MAIN LOCATION OR ELEVATION DIFFERS FROM THOSE SHOWN ON THIS PLAN.

WATER SERVICE COORDINATES

NO.	TYPE	NORTHING	EASTING
1	SANITARY LIFT STATION PER DETAIL A/C4.4	632900.10	1564468.69
2	2" 45° HORZ. BEND	632884.62	1564467.88
3	2" 45° HORZ. BEND	632879.48	1564472.59
4	2" 45° HORZ. BEND	632879.25	1564480.30
5	2" 45° HORZ. BEND	632872.06	1564487.08
6	2" 45° HORZ. BEND	632635.99	1564490.20
7	2" 45° HORZ. BEND	632631.89	1564494.80
8	2" 45° HORZ. BEND	632627.75	1564495.03
9	2" 45° HORZ. BEND	632623.15	1564490.92
10	2" 45° HORZ. BEND	632482.98	1564502.52
11	2" 45° HORZ. BEND	632481.04	1564504.94
12	2" 45° HORZ. BEND	632476.92	1564505.39
13	2" 45° HORZ. BEND	632474.50	1564503.45
14	2" 45° HORZ. BEND	632015.82	1564576.17
15	2" 45° HORZ. BEND	632010.62	1564583.49
16	2" 45° HORZ. BEND	632006.54	1564584.18
17	2" 45° HORZ. BEND	631989.22	1564578.98
18	2" 45° HORZ. BEND	631719.75	1564626.30
19	2" 45° HORZ. BEND	631715.27	1564632.60
20	2" 45° HORZ. BEND	631711.18	1564633.28
21	2" 45° HORZ. BEND	631704.89	1564628.82
22	2" 45° HORZ. BEND	631536.28	1564655.71
23	2" 45° HORZ. BEND	631531.86	1564661.71
24	2" 45° HORZ. BEND	631527.77	1564662.33
25	2" 45° HORZ. BEND	631521.76	1564657.91
26	2" 11.25° HORZ. BEND	631453.97	1564668.20
27	CONNECT TO EXISTING MANHOLE	631448.83	1564667.94



REVISIONS:

08.30.2022	- UTILITY PERMIT SUBMISSION
09.08.2022	- UTILITY PERMIT 2ND SUBMISSION

KORDA
KORDA NEMETH ENGINEERING
1650 WATERMARK DRIVE
SUITE 200
COLUMBUS, OHIO 43215

DRAWN BY: JDB
DESIGNED BY: JDB
CHECKED BY: CMF
PROJECT NUMBER: 2021-0003

CONSTRUCTION DOCUMENTS

FOR OFFICIAL USE ONLY - Infrastructure Record
This document is an infrastructure record pursuant to Ohio Revised Code 149.433(A). Therefore, it is not a public record and its authorized use, copying or distribution is prohibited.

ENGINEERING
Ohio Department of Natural Resources

HISTORIC OLDTOWN
NEW INTERPRETIVE CENTER
1575 US-68, XENIA, OHIO 45385

DESIGNED BY:	JDB	JOB NUMBER:	DNR-210003
DRAWN BY:	JDB	SCALE:	AS NOTED
CHECKED BY:	CMF	PERMIT DATE:	02.25.2022
APPROVED BY:	XX	DRAWING DATE:	08.30.2022







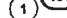
SANITARY PLAN & PROFILE

UTILITY LEGEND

EXISTING

REFER TO SHEET TS1

PROPOSED

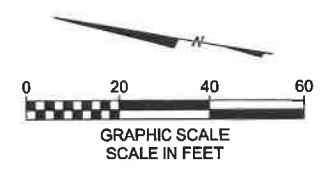
-  SAN SANITARY SEWER
-  FM SANITARY FORCE MAIN
-  -] - CUT AND PLUG EXISTING UTILITY
-  -(AB)- ABANDON EXISTING UTILITY
-  -(R)- REMOVE EXISTING UTILITY
-  LIFT STATION PER DETAIL A/CA.4
-  101 STRUCTURE NUMBER

GENERAL NOTES:

1. OBTAIN ALL PERMITS AND PAY ALL FEES NECESSARY TO COMPLETE THE WORK SHOWN.
2. MAINTAIN MINIMUM 18" VERTICAL CLEARANCE FROM THE OUTSIDE OF ANY WATERLINE PIPE TO THE OUTSIDE OF SANITARY SEWER.
3. ROOF DRAINS, FOUNDATION DRAINS, AND OTHER CLEAN WATER CONNECTIONS TO THE SANITARY SEWER ARE PROHIBITED.
4. ALL COORDINATES AND ELEVATIONS BASED ON SURVEY PERFORMED BY KORDA/NEMETH ENGINEERING DATED 10/26/2021. REFER TO SHEET TS1.
5. WHERE PLANS PROVIDE FOR A PROPOSED UTILITY TO BE CONNECTED TO, OR CROSS OVER, OR UNDER AN EXISTING UNDERGROUND UTILITY, THE CONTRACTOR SHALL LOCATE THE EXISTING PIPES OR UTILITIES, BOTH AS TO LINE AND GRADE BEFORE STARTING TO LAY THE PROPOSED UTILITY. THESE LOCATIONS ARE NOTED THUS: EXPOSE. IF IT IS DETERMINED THAT THE ELEVATION OF THE EXPOSED UTILITY DIFFERS FROM THE PLAN ELEVATION, RESULTS IN A CHANGE IN THE PLAN SEWER SLOPE, OR WILL INTERSECT AN EXISTING UTILITY AS SHOWN ON THE PLAN, THE ENGINEER SHALL BE NOTIFIED BEFORE STARTING CONSTRUCTION OF ANY PORTION OF THE PROPOSED UTILITY WHICH WILL BE AFFECTED BY THE VARIANCE IN THE EXISTING ELEVATIONS.
6. SUPPORT AND PROTECT ALL UTILITIES EXPOSED DURING EXCAVATION AND TRENCHING.
7. MAINTAIN MINIMUM 4'-6" COVER OVER SANITARY FORCE MAIN.
8. PERFORM SANITARY WORK IN ACCORDANCE WITH CITY OF XENIA MATERIALS AND CONSTRUCTION SPECIFICATIONS AND STANDARD CONSTRUCTION DRAWINGS. IN CASE OF DISCREPANCY BETWEEN CITY OF XENIA STANDARDS AND PROJECT SPECIFICATION, CITY OF XENIA STANDARDS SHALL GOVERN.
9. PROVIDE MAINTENANCE OF TRAFFIC IN ACCORDANCE WITH THE OHIO MANUAL OF UNIFORM TRAFFIC CONTROL DEVICES (OMUTCD).

CODED NOTES:

1. SUPPORT EXISTING UTILITY POLE AS NECESSARY DURING INSTALLATION OF SANITARY SEWER. COORDINATE WITH POLE OWNER.
2. SUPPORT AND PROTECT EXISTING HEADWALL TO REMAIN.
3. BACKFILL WITH COMPACTED BACKFILL TYPE D PER SPECIFICATION SECTION 31 00 00 AND 31 23 33.
4. BACKFILL WITH COMPACTED GRANULAR BACKFILL TYPE A OR J PER SPECIFICATION SECTION 31 00 00 AND 31 23 33.
5. UTILITY POLE TO BE RELOCATED.
6. PROTECT AND SUPPORT EXISTING FIRE HYDRANT.
7. CONTRACTOR SHALL FIELD VERIFY HORIZONTAL LOCATION AND ELEVATION OF EXISTING 20" WATER MAIN PRIOR TO COMMENCING WORK ON SANITARY FORCE MAIN INSTALLATION. IMMEDIATELY NOTIFY THE ENGINEER IF WATER MAIN LOCATION OR ELEVATION DIFFERS FROM THOSE SHOWN ON THIS PLAN.



REVISIONS:	
08.30.2022	- UTILITY PERMIT SUBMISSION
09.08.2022	- UTILITY PERMIT 2ND SUBMISSION

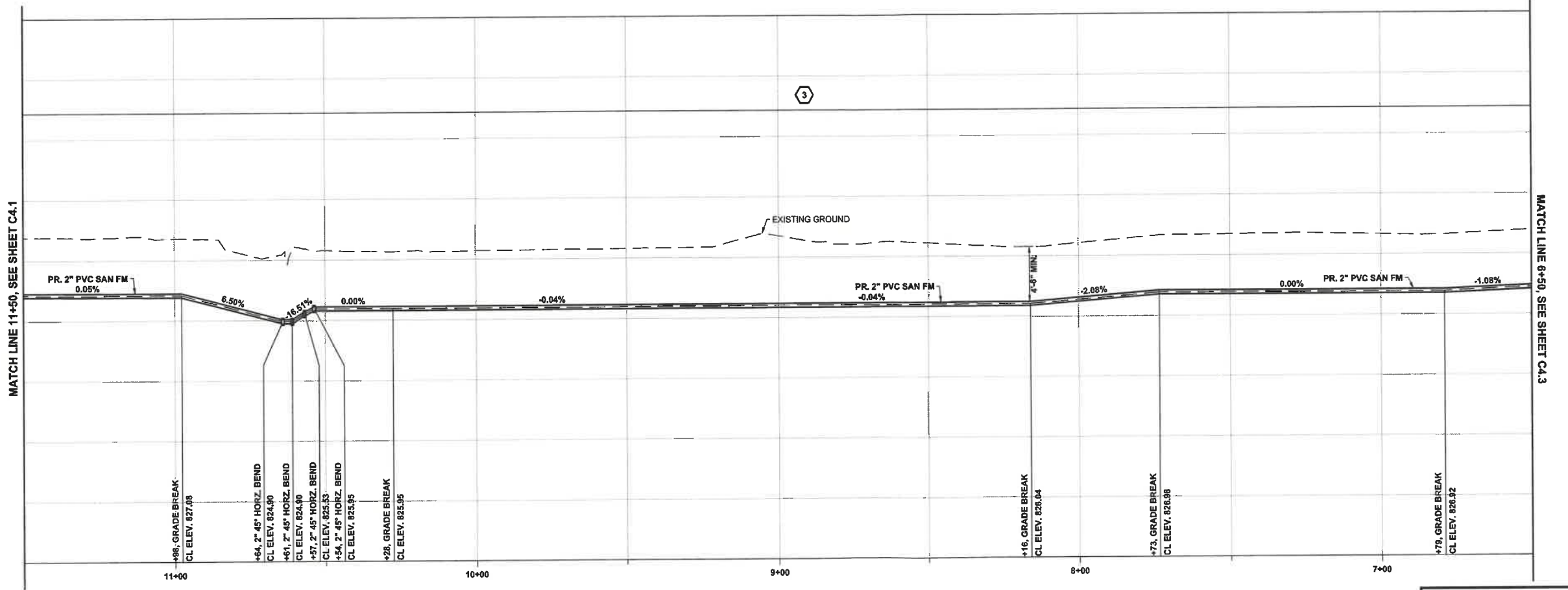
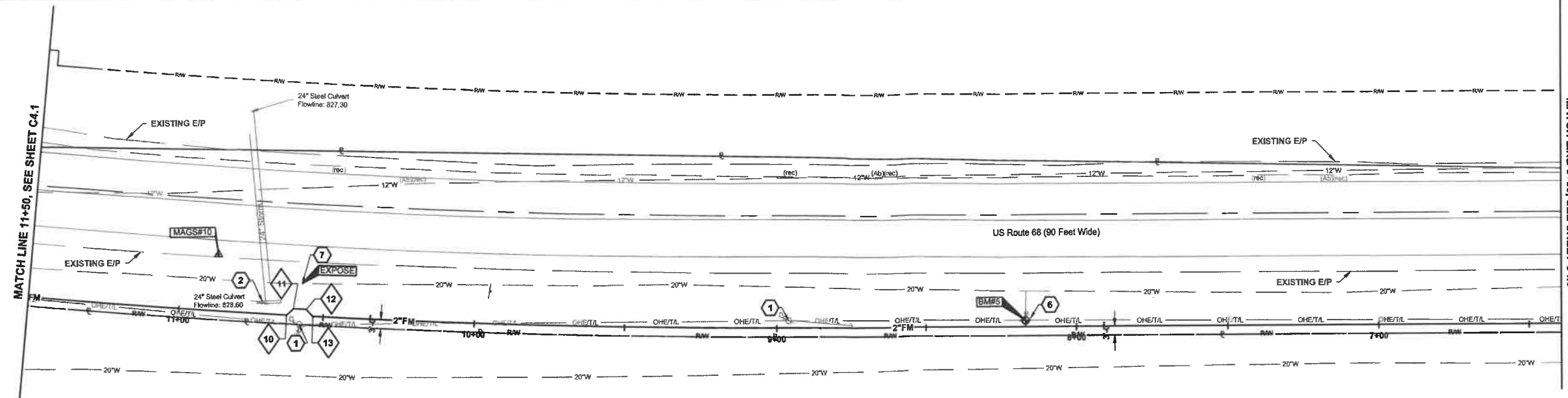
KORDA
 KORDA NEMETH ENGINEERING
 1650 WATERMARK DRIVE
 SUITE 200
 COLUMBUS, OHIO 43215
 DRAWN BY: JDB
 DESIGNED BY: JDB
 CHECKED BY: CMF
 PROJECT NUMBER: 2021-0003

CONSTRUCTION DOCUMENTS

SANITARY PLAN & PROFILE

SHEET NO. **C4.2**





FOR OFFICIAL USE ONLY - Infrastructure Record
 This document is an infrastructure record pursuant to Ohio Revised Code 148.433(A). Therefore, it is not a public record and its authorized use, copying or distribution is prohibited.



HISTORIC OLDTOWN
NEW INTERPRETIVE CENTER
 1575 US-68, XENIA, OHIO 45385

DESIGNED BY:	JDB	JOB NUMBER:	DNR-210003
DRAWN BY:	JDB	SCALE:	AS NOTED
CHECKED BY:	CMF	PERMIT DATE:	02.25.2022
APPROVED BY:	XX	DRAWING DATE:	08.30.2022

UTILITY LEGEND

EXISTING

REFER TO SHEET TS1

PROPOSED

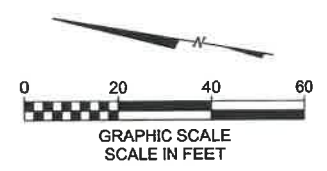
- SAN - SANITARY SEWER
- FM - SANITARY FORCE MAIN
- J - CUT AND PLUG EXISTING UTILITY
- (AB) - ABANDON EXISTING UTILITY
- (R) - REMOVE EXISTING UTILITY
- LIFT STATION PER DETAIL A/C4.4
- STRUCTURE NUMBER

GENERAL NOTES:

1. OBTAIN ALL PERMITS AND PAY ALL FEES NECESSARY TO COMPLETE THE WORK SHOWN.
2. MAINTAIN MINIMUM 18" VERTICAL CLEARANCE FROM THE OUTSIDE OF ANY WATERLINE PIPE TO THE OUTSIDE OF SANITARY SEWER.
3. ROOF DRAINS, FOUNDATION DRAINS, AND OTHER CLEAN WATER CONNECTIONS TO THE SANITARY SEWER ARE PROHIBITED.
4. ALL COORDINATES AND ELEVATIONS BASED ON SURVEY PERFORMED BY KORDA NEMETH ENGINEERING DATED 10/26/2021. REFER TO SHEET TS1.
5. WHERE PLANS PROVIDE FOR A PROPOSED UTILITY TO BE CONNECTED TO, OR CROSS OVER, OR UNDER AN EXISTING UNDERGROUND UTILITY, THE CONTRACTOR SHALL LOCATE THE EXISTING PIPES OR UTILITIES, BOTH AS TO LINE AND GRADE BEFORE STARTING TO LAY THE PROPOSED UTILITY. THESE LOCATIONS ARE NOTED THUS: EXPOSE. IF IT IS DETERMINED THAT THE ELEVATION OF THE EXPOSED UTILITY DIFFERS FROM THE PLAN ELEVATION, RESULTS IN A CHANGE IN THE PLAN SEWER SLOPE, OR WILL INTERSECT AN EXISTING UTILITY AS SHOWN ON THE PLAN, THE ENGINEER SHALL BE NOTIFIED BEFORE STARTING CONSTRUCTION OF ANY PORTION OF THE PROPOSED UTILITY WHICH WILL BE AFFECTED BY THE VARIANCE IN THE EXISTING ELEVATIONS.
6. SUPPORT AND PROTECT ALL UTILITIES EXPOSED DURING EXCAVATION AND TRENCHING.
7. MAINTAIN MINIMUM 4'-6" COVER OVER SANITARY FORCE MAIN.
8. PERFORM SANITARY WORK IN ACCORDANCE WITH CITY OF XENIA MATERIALS AND CONSTRUCTION SPECIFICATIONS AND STANDARD CONSTRUCTION DRAWINGS. IN CASE OF DISCREPANCY BETWEEN CITY OF XENIA STANDARDS AND PROJECT SPECIFICATION, CITY OF XENIA STANDARDS SHALL GOVERN.
9. PROVIDE MAINTENANCE OF TRAFFIC IN ACCORDANCE WITH THE OHIO MANUAL OF UNIFORM TRAFFIC CONTROL DEVICES (OMUTCD).

CODED NOTES:

1. SUPPORT EXISTING UTILITY POLE AS NECESSARY DURING INSTALLATION OF SANITARY SEWER. COORDINATE WITH POLE OWNER.
2. SUPPORT AND PROTECT EXISTING HEADWALL TO REMAIN.
3. BACKFILL WITH COMPACTED BACKFILL TYPE D PER SPECIFICATION SECTION 31 00 00 AND 31 23 33.
4. BACKFILL WITH COMPACTED GRANULAR BACKFILL TYPE A OR J PER SPECIFICATION SECTION 31 00 00 AND 31 23 33.
5. UTILITY POLE TO BE RELOCATED.
6. PROTECT AND SUPPORT EXISTING FIRE HYDRANT.
7. CONTRACTOR SHALL FIELD VERIFY HORIZONTAL LOCATION AND ELEVATION OF EXISTING 20" WATER MAIN PRIOR TO COMMENCING WORK ON SANITARY FORCE MAIN INSTALLATION. IMMEDIATELY NOTIFY THE ENGINEER IF WATER MAIN LOCATION OR ELEVATION DIFFERS FROM THOSE SHOWN ON THIS PLAN.



REVISIONS:	
08.30.2022	- UTILITY PERMIT SUBMISSION
09.06.2022	- UTILITY PERMIT 2ND SUBMISSION

KORDA
KORDA NEMETH ENGINEERING
1650 WATERMARK DRIVE
SUITE 200
COLUMBUS, OHIO 43215
DRAWN BY: JDB
DESIGNED BY: JDB
CHECKED BY: CMF
PROJECT NUMBER: 2021-0003

CONSTRUCTION DOCUMENTS

DESIGNED BY: JDB JOB NUMBER: DNR-210003
DRAWN BY: JDB SCALE: AS NOTED
CHECKED BY: CMF PERMIT DATE: 02.25.2022
APPROVED BY: XX DRAWING DATE: 06.30.2022

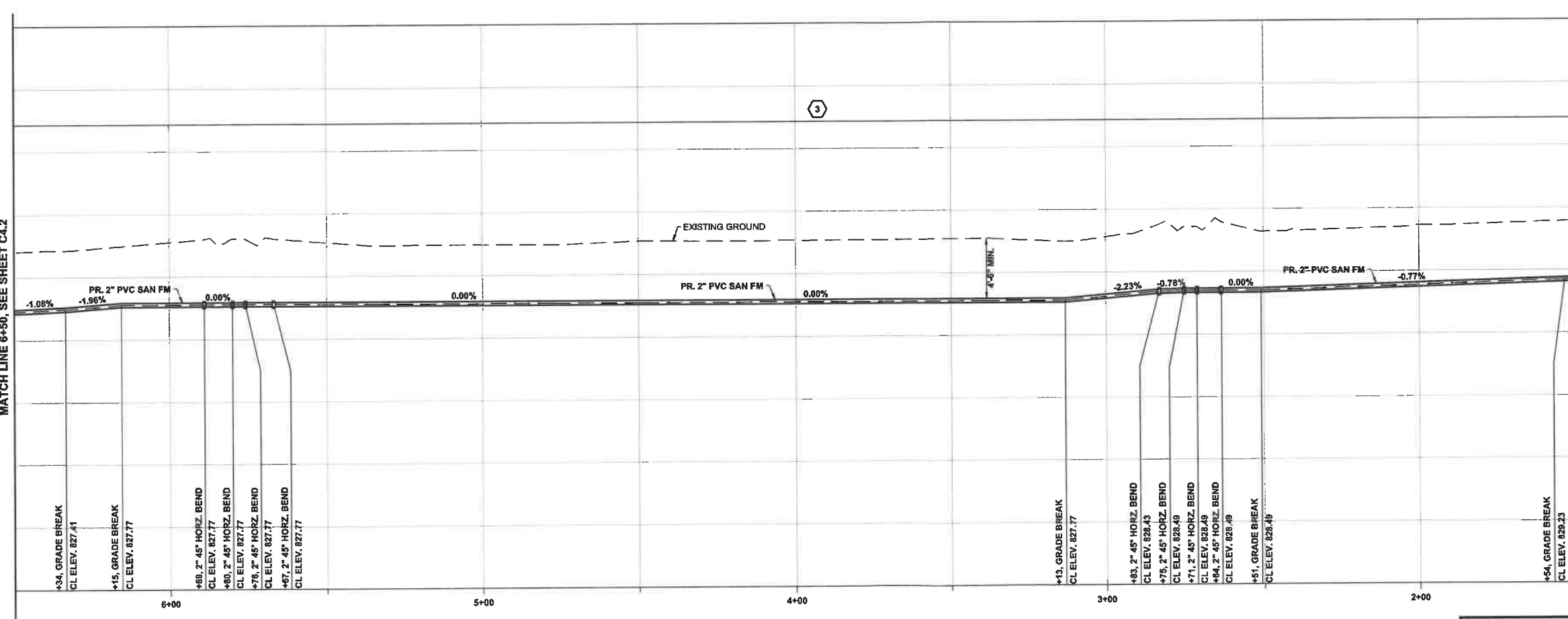
SANITARY PLAN & PROFILE SHEET NO. **C4.3**

MATCH LINE 6+50, SEE SHEET C4.2

MATCH LINE 1+50, SEE SHEET C4.4

MATCH LINE 6+50, SEE SHEET C4.2

MATCH LINE 1+50, SEE SHEET C4.4



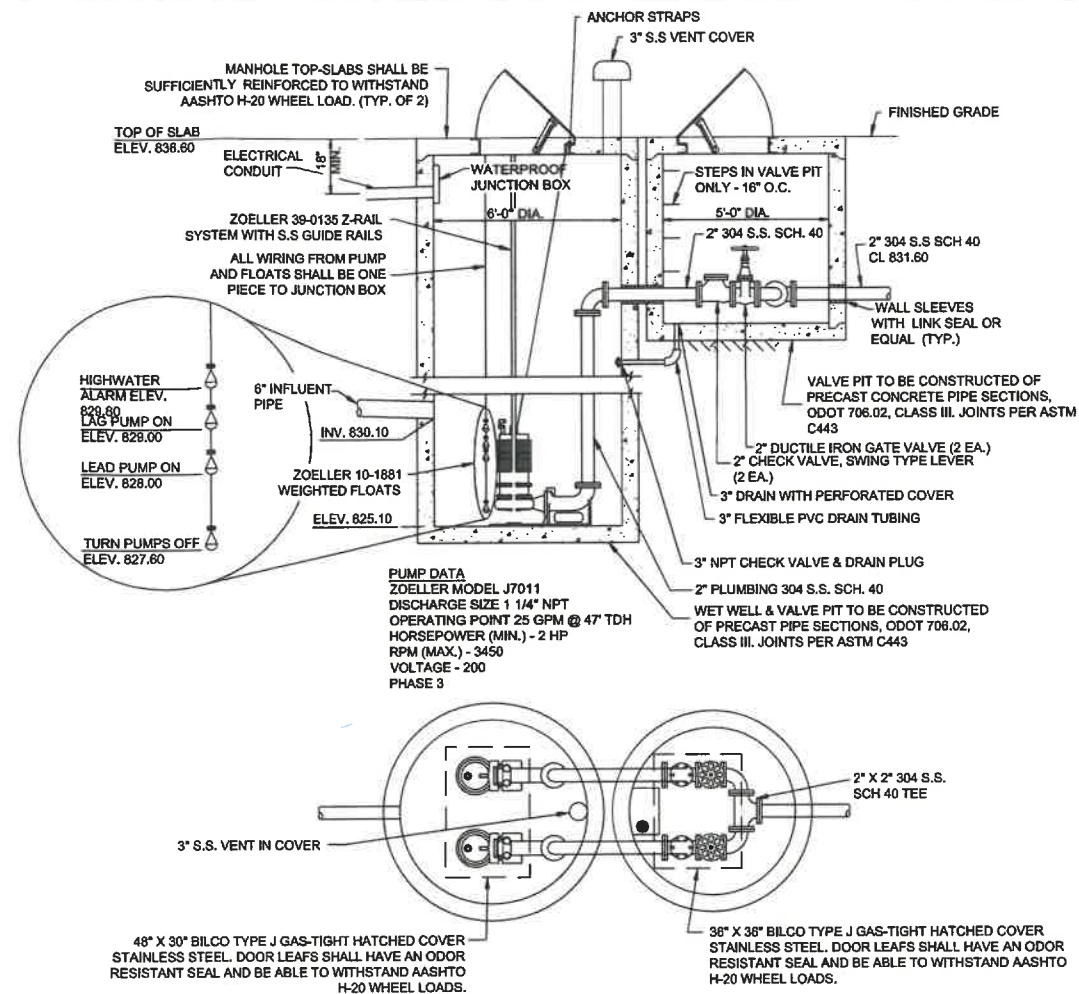
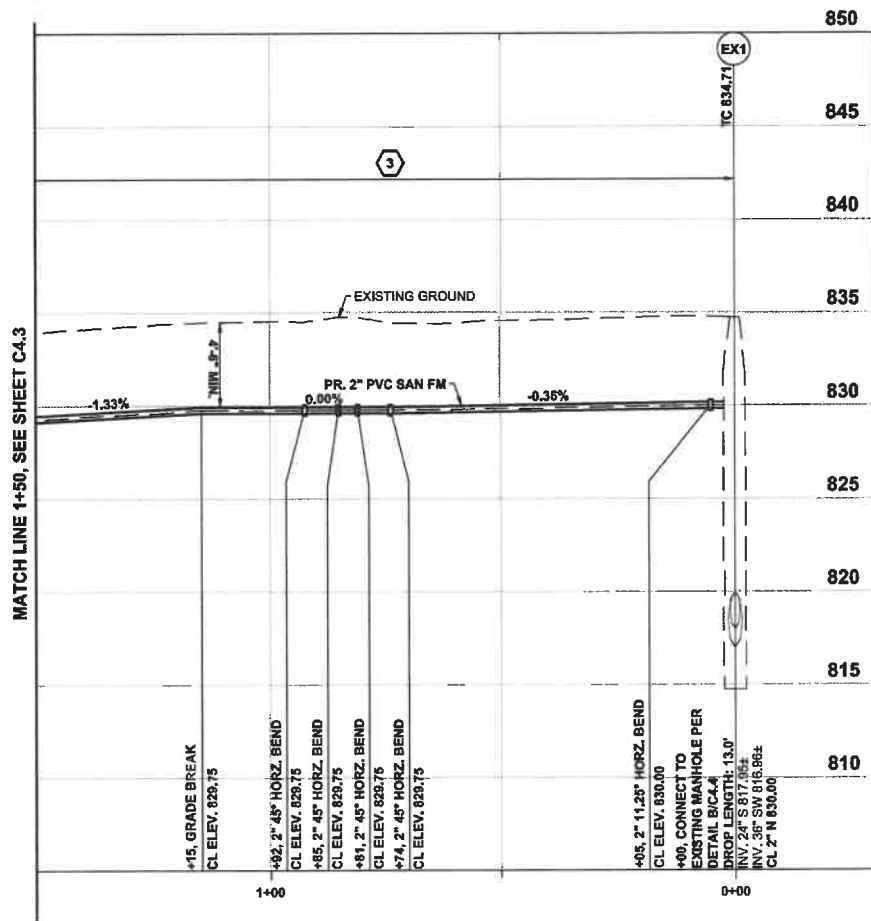
FOR OFFICIAL USE ONLY - Infrastructure Record
This document is an infrastructure record pursuant to Ohio Revised Code 149.433(A). Therefore, it is not a public record and its authorized use, copying or distribution is prohibited.

ENGINEERING
Ohio Department of Natural Resources

HISTORIC OLDTOWN
NEW INTERPRETIVE CENTER
1575 US-68, XENIA, OHIO 45385

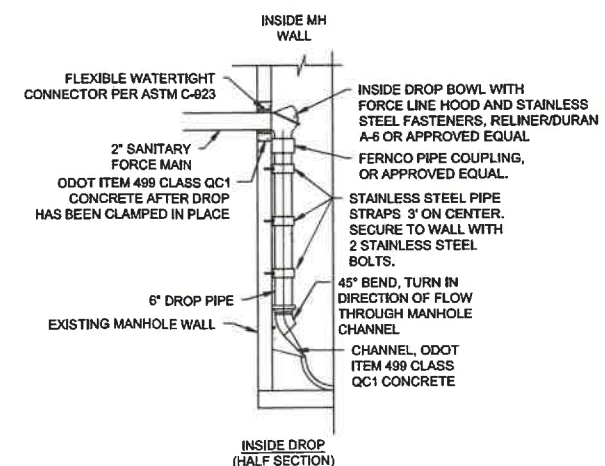
MATCH LINE 1+50, SEE SHEET C4.3

MATCH LINE 1+50, SEE SHEET C4.3



A DETAIL
SANITARY LIFT STATION - STRUCTURE 101

N.T.S.



B DETAIL
INSIDE DROP FOR MANHOLES

N.T.S.

UTILITY LEGEND

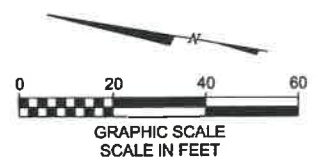
EXISTING
REFER TO SHEET TS1

PROPOSED

— SAN —	SANITARY SEWER
— FM —	SANITARY FORCE MAIN
— (AB) —	CUT AND PLUG EXISTING UTILITY
— (R) —	ABANDON EXISTING UTILITY
— (R) —	REMOVE EXISTING UTILITY
⊗	LIFT STATION PER DETAIL A/C4.4
①	STRUCTURE NUMBER

- GENERAL NOTES:**
- OBTAIN ALL PERMITS AND PAY ALL FEES NECESSARY TO COMPLETE THE WORK SHOWN.
 - MAINTAIN MINIMUM 18" VERTICAL CLEARANCE FROM THE OUTSIDE OF ANY WATERLINE PIPE TO THE OUTSIDE OF SANITARY SEWER.
 - ROOF DRAINS, FOUNDATION DRAINS, AND OTHER CLEAN WATER CONNECTIONS TO THE SANITARY SEWER ARE PROHIBITED.
 - ALL COORDINATES AND ELEVATIONS BASED ON SURVEY PERFORMED BY KORDA/NEMETH ENGINEERING DATED 10/26/2021. REFER TO SHEET TS1.
 - WHERE PLANS PROVIDE FOR A PROPOSED UTILITY TO BE CONNECTED TO, OR CROSS OVER, OR UNDER AN EXISTING UNDERGROUND UTILITY, THE CONTRACTOR SHALL LOCATE THE EXISTING PIPES OR UTILITIES, BOTH AS TO LINE AND GRADE BEFORE STARTING TO LAY THE PROPOSED UTILITY. THESE LOCATIONS ARE NOTED THUS: EXPOSE. IF IT IS DETERMINED THAT THE ELEVATION OF THE EXPOSED UTILITY DIFFERS FROM THE PLAN ELEVATION, RESULTS IN A CHANGE IN THE PLAN SEWER SLOPE, OR WILL INTERSECT AN EXISTING UTILITY AS SHOWN ON THE PLAN, THE ENGINEER SHALL BE NOTIFIED BEFORE STARTING CONSTRUCTION OF ANY PORTION OF THE PROPOSED UTILITY WHICH WILL BE AFFECTED BY THE VARIANCE IN THE EXISTING ELEVATIONS.
 - SUPPORT AND PROTECT ALL UTILITIES EXPOSED DURING EXCAVATION AND TRENCHING.
 - MAINTAIN MINIMUM 4'-6" COVER OVER SANITARY FORCE MAIN.
 - PERFORM SANITARY WORK IN ACCORDANCE WITH CITY OF XENIA MATERIALS AND CONSTRUCTION SPECIFICATIONS AND STANDARD CONSTRUCTION DRAWINGS. IN CASE OF DISCREPANCY BETWEEN CITY OF XENIA STANDARDS AND PROJECT SPECIFICATION, CITY OF XENIA STANDARDS SHALL GOVERN.
 - PROVIDE MAINTENANCE OF TRAFFIC IN ACCORDANCE WITH THE OHIO MANUAL OF UNIFORM TRAFFIC CONTROL DEVICES (OMUTCD).

- CODED NOTES:**
- SUPPORT EXISTING UTILITY POLE AS NECESSARY DURING INSTALLATION OF SANITARY SEWER. COORDINATE WITH POLE OWNER.
 - SUPPORT AND PROTECT EXISTING HEADWALL TO REMAIN.
 - BACKFILL WITH COMPACTED BACKFILL TYPE D PER SPECIFICATION SECTION 31 00 00 AND 31 23 33.
 - BACKFILL WITH COMPACTED GRANULAR BACKFILL TYPE A OR J PER SPECIFICATION SECTION 31 00 00 AND 31 23 33.
 - UTILITY POLE TO BE RELOCATED.
 - PROTECT AND SUPPORT EXISTING FIRE HYDRANT.
 - CONTRACTOR SHALL FIELD VERIFY HORIZONTAL LOCATION AND ELEVATION OF EXISTING 20" WATER MAIN PRIOR TO COMMENCING WORK ON SANITARY FORCE MAIN INSTALLATION. IMMEDIATELY NOTIFY THE ENGINEER IF WATER MAIN LOCATION OR ELEVATION DIFFERS FROM THOSE SHOWN ON THIS PLAN.



REVISIONS:

06.30.2022	- UTILITY PERMIT SUBMISSION
09.08.2022	- UTILITY PERMIT 2ND SUBMISSION

KORDA
KORDA NEMETH ENGINEERING
1850 WATERMARK DRIVE
SUITE 200
COLUMBUS, OHIO 43215

DESIGNED BY: JDB
DRAWN BY: JDB
CHECKED BY: CMF
PROJECT NUMBER: 2021-0003

CONSTRUCTION DOCUMENTS

FOR OFFICIAL USE ONLY - Infrastructure Record
This document is an infrastructure record pursuant to Ohio Revised Code 149.433(A). Therefore, it is not a public record and its authorized use, copying or distribution is prohibited.



ENGINEERING
Ohio Department of Natural Resources

HISTORIC OLDTOWN
NEW INTERPRETIVE CENTER
1575 US-68, XENIA, OHIO 45385

DESIGNED BY:	JDB	JOB NUMBER:	DNR-210003
DRAWN BY:	JDB	SCALE:	AS NOTED
CHECKED BY:	CMF	PERMIT DATE:	02.25.2022
APPROVED BY:	XX	DRAWING DATE:	08.30.2022

SANITARY PLAN & PROFILE SHEET NO. **C4.4** 20/20