

STRUCTURE REPAIR (GRE-35-0.08L)					(100% 01/NHS/13 FUNDING)				
ITEM	EXTENSION	TOTAL	UNIT	DESCRIPTION	ABUTMENT	PIERS	SUPERSTRUCTURE	GENERAL	REFERENCE
202	11203	LS	LUMP	PORTIONS OF STRUCTURE REMOVED, OVER 20 FOOT SPAN, AS PER PLAN			LUMP		10
509	20000	1025	LB	CONCRETE REINFORCEMENT, REPLACEMENT OF EXISTING CONCRETE REINFORCEMENT			1025		
511	34412	8	CY	CLASS QC2 CONCRETE WITH QC/QA, SUPERSTRUCTURE			8		
512	10300	41	SY	SEALING CONCRETE BRIDGE DECKS WITH HMWM RESIN			41		
SPECIAL	530E00200	LS	LUMP	STRUCTURES: CONSULTANT FOR CONCRETE QUALITY CONTROL INCLUDING TESTING AND INSPECTION			LUMP		11
SPECIAL	530E00400	246	EA	STRUCTURES: EMBEDDED GALVANIC ANODES			246		10
848	10201	1549	SY	SUPERPLASTICIZED DENSE CONCRETE OVERLAY USING HYDRODEMOLITION, AS PER PLAN (T=2.25")			1,549		10
848	20000	1549	SY	SURFACE PREPARATION USING HYDRODEMOLITION			1,549		
848	30200	45	CY	SUPERPLASTICIZED DENSE CONCRETE OVERLAY, VARIABLE THICKNESS, (MATERIAL ONLY)			45		
848	50000	41	SY	HAND CHIPPING			41		
848	50100	LS	LUMP	TEST SLAB			LUMP		
848	50320	1549	SY	EXISTING CONCRETE OVERLAY REMOVED (T=1.50")			1549		
848	50340	1549	SY	REMOVAL OF DEBONDED OR DETERIORATED EXISTING VARIABLE THICKNESS CONCRETE OVERLAY			1,549		

STRUCTURE REPAIR (GRE-35-0.08R)					(100% 01/NHS/13 FUNDING)				
ITEM	EXTENSION	TOTAL	UNIT	DESCRIPTION	ABUTMENT	PIERS	SUPERSTRUCTURE	GENERAL	REFERENCE
202	11203	LS	LUMP	PORTIONS OF STRUCTURE REMOVED, OVER 20 FOOT SPAN, AS PER PLAN			LUMP		10
509	20000	8100	LB	CONCRETE REINFORCEMENT, REPLACEMENT OF EXISTING CONCRETE REINFORCEMENT			8100		
509	25000	608	LB	UNCOATED STEEL REINFORCEMENT			608		
510	10001	16	EA	DOWEL HOLES WITH NONSHRINK, NONMETALLIC GROUT, AS PER PLAN			16		10
511	34412	70	CY	CLASS QC2 CONCRETE WITH QC/QA, SUPERSTRUCTURE			70		
512	10100	42	SY	SEALING OF CONCRETE SURFACES (EPOXY-URETHANE)			42		
512	10300	41	SY	SEALING CONCRETE BRIDGE DECKS WITH HMWM RESIN			41		
512	74000	3	SY	REMOVAL OF EXISTING COATINGS FROM CONCRETE SURFACES			3		
SPECIAL	530E00200	LS	LUMP	STRUCTURES: CONSULTANT FOR CONCRETE QUALITY CONTROL INCLUDING TESTING AND INSPECTION					11
SPECIAL	530E00400	2198	EA	STRUCTURES: EMBEDDED GALVANIC ANODES			2,198		10
848	10201	1323	SY	SUPERPLASTICIZED DENSE CONCRETE OVERLAY USING HYDRODEMOLITION, AS PER PLAN (T=2.25")			1,323		10
848	20000	1323	SY	SURFACE PREPARATION USING HYDRODEMOLITION			1,323		
848	30200	37	CY	SUPERPLASTICIZED DENSE CONCRETE OVERLAY, VARIABLE THICKNESS, (MATERIAL ONLY)			37		
848	50000	41	SY	HAND CHIPPING			41		
848	50100	LS	LUMP	TEST SLAB			LUMP		
848	50320	1323	SY	EXISTING CONCRETE OVERLAY REMOVED (T=1.50")			1323		
848	50340	1323	SY	REMOVAL OF DEBONDED OR DETERIORATED EXISTING VARIABLE THICKNESS CONCRETE OVERLAY			1,323		

STRUCTURE QUANTITIES
 BRIDGE No.: GRE-35-0.08 L/R
 US 35 OVER DAYTON-XENIA RD.

SFN 2902966

SFN 2902974

DESIGN AGENCY



DESIGNER CAH CHECKER GTF

REVIEWER

AMS 12-11-23

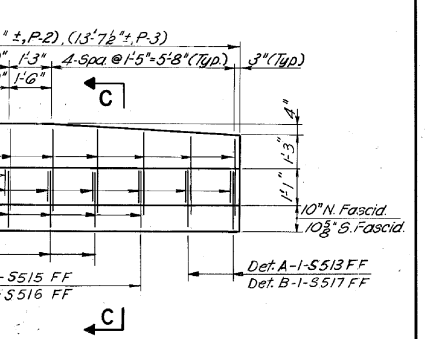
PROJECT ID 120048

SUBSET TOTAL 4 12

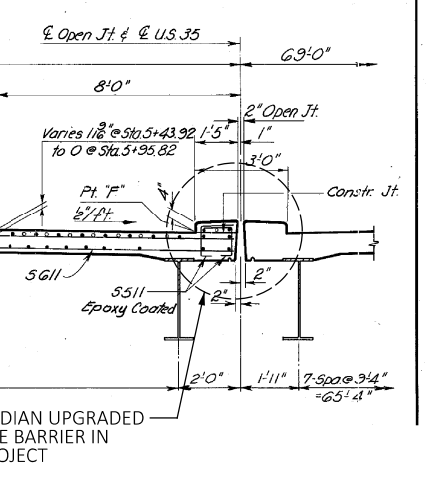
SHEET TOTAL 13 21

No. Req'd	Mark	L
18	P-1	6'-0"
2, 8	P-2, P-4	11'-5"
2, 1	P-3, P-5	13'-7"
8	P-6	11'-1"
1	P-7	12'-5"

No. Req'd	Mark	L
5	5-5502 @ 18" ± = 5'-8" (P-1)	
9	5-5502 @ 18" ± = 11'-0" (P-4)	
10	5-5502 @ 18" ± = 13'-4" (P-5)	
8	5-5502 @ 18" ± = 10'-9" (P-6)	
9	5-5502 @ 18" ± = 12'-0" (P-7)	



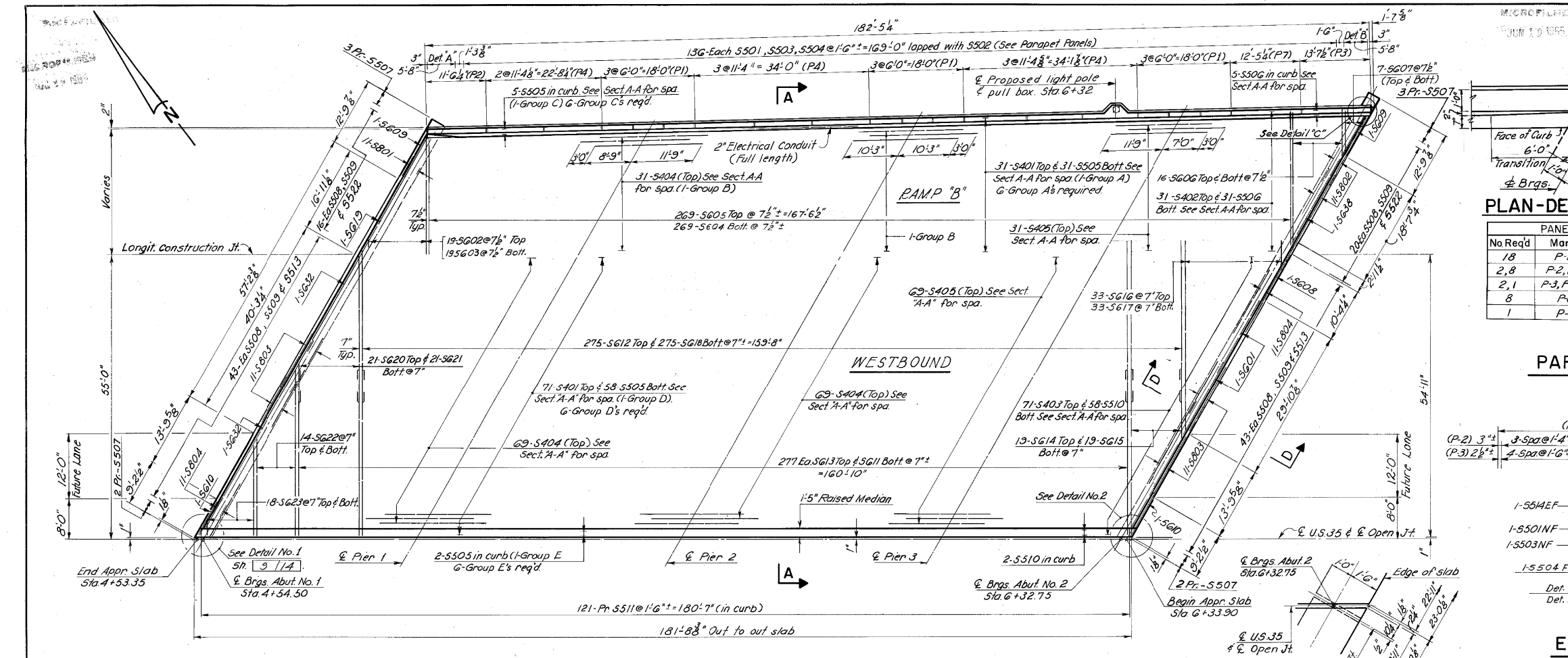
PARAPET PANELS
ELEVATION-DETAIL A & B



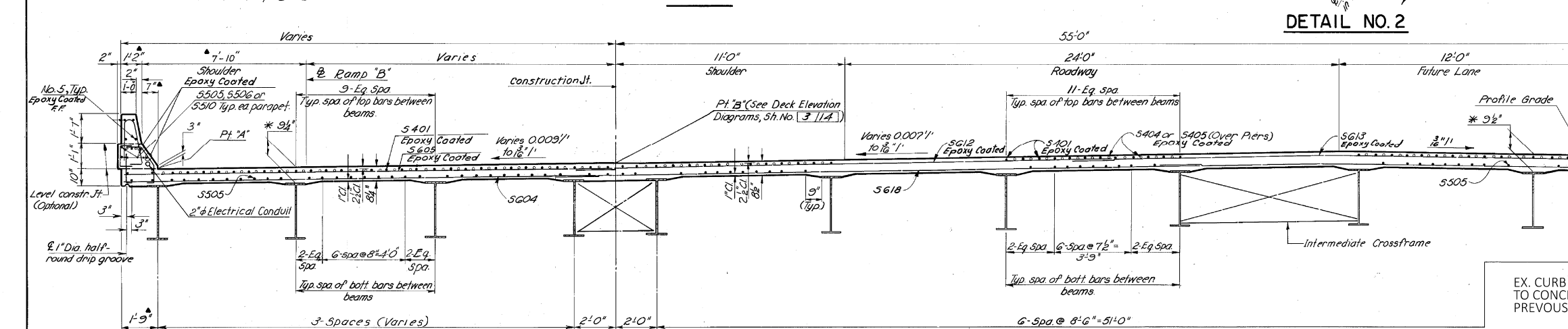
DETAIL NO. 2

EX. CURB MEDIAN UPGRADED TO CONCRETE BARRIER IN PREVIOUS PROJECT

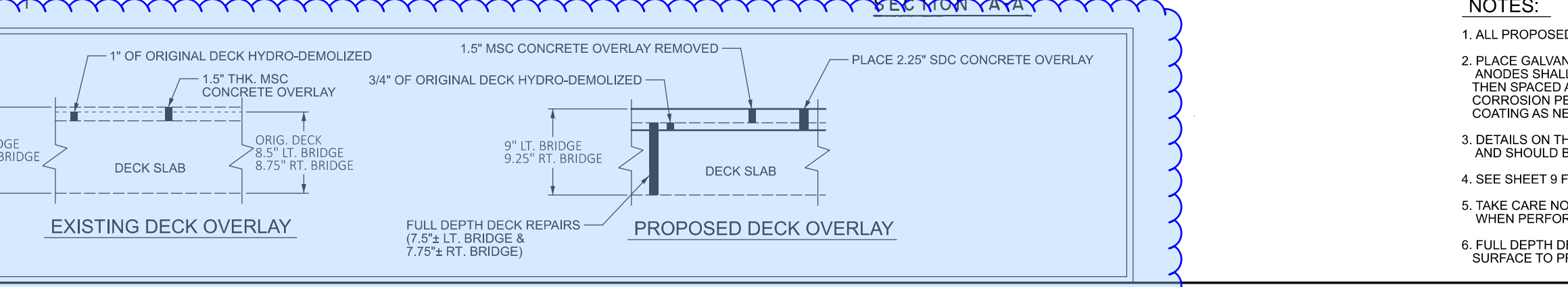
- NOTES:**
- ALL PROPOSED REBAR SHALL BE UNCOATED BLACK BARS.
 - PLACE GALVANIC ANODES IN ALL FULL DEPTH DECK REPAIRS. ANODES SHALL BE PLACED 6" FROM EDGES OF PATCH AND THEN SPACED AT 18" MAX CENTER/CENTER FOR MODERATE CORROSION PER SS 844. REMOVE EXISTING REBAR EPOXY COATING AS NEEDED TO COMPLETE ANODE INSTALLATION.
 - DETAILS ON THIS SHEET ARE TAKEN FROM EXISTING PLANS AND SHOULD BE USED FOR INFORMATION PURPOSES ONLY.
 - SEE SHEET 9 FOR DECK REPAIR LOCATIONS.
 - TAKE CARE NOT TO DAMAGE FULL DEPTH DECK REPAIRS WHEN PERFORMING HYDRO-DEMOLITION.
 - FULL DEPTH DECK REPAIR AREAS SHALL HAVE A ROUGHENED SURFACE TO PROMOTE BONDING WITH THE NEW DECK OVERLAY.



PLAN



SECTION A-A



EXISTING DECK OVERLAY
PROPOSED DECK OVERLAY

GRE-US 35-0.08 L/R
 MODEL: Sheet_SurvFR_PAPER SIZE: 17x11 (in.) DATE: 3/28/2024 TIME: 1:20:17 PM USER: choward4
 p:\ohio\dot-pw-bentley.com\ohio\dot-pw-02\Documents\01_A\ave Projects\District 08\Greene\120048\400-Engineering\Structures\SFN_2902974\Sheets\120048_SFN_2902974_S0002.dgn

DECK PLAN
 BRIDGE No.: GRE-35-0.08L
 US 35 OVER DAYTON-XENIA RD.

SFN	2902966
SFN	2902974
DESIGN AGENCY	
DESIGNER	CAH
CHECKER	GTF
REVIEWER	
AMS	12-11-23
PROJECT ID	120048
SUBSET	TOTAL
10	12
SHEET	TOTAL
19	21