

AUXILIARY MARKING DATA

COUNTY	LOCATION	ROUTE	DESCRIPTION	SIDE	644								647		REMARKS PLACE PER DETAILS BELOW OR AS DIRECTED BY THE ENGINEER STOP BARS SHALL BE PLACED A MINIMUM OF 4' FROM EDGE OF PAVEMENT		
					CHANNELIZING LINE, 8"	CROSSWALK LINE, 12"	STOP LINE, 24"	PARKING STALL MARKING		LANE ARROW 96"			WORD ON PAVEMENT 96"	PAVEMENT MARKING MISC.: NO PARKING DESIGNATION		HANDICAP MARKING SYMBOL, B125 (BLUE/WHITE)	
								WHITE	YELLOW	THRU	LT.	RT.					ONLY
								FT.	FT.	EACH	EACH	EACH					EACH
GUE	SALT FORK	R-5	AT CHECK-IN			40	18										
			R-5 EXTRA AREAS:														
			A (PARKING LOT)			35		965	795	3		1			3	SEE SHEET 11	
			B (PULL OFF)				18					1	1			SEE SHEET 12	
			R-19				10									SEE SHEET 12	
			C (SHOWER HOUSE PARKING)					60	120						1	SEE SHEET 13	
			D (SHOWER HOUSE PARKING)				55	60	140						1	SEE SHEET 14	
			E (SHOWER HOUSE PARKING)					120	140						1	SEE SHEET 17	
			R-17/F (PARKING LOT)					1,260	365				1		2	SEE SHEET 18	
			G (PARKING LOT)					1,480	270						2	SEE SHEET 18	
			R-5 CAMP ROADS:														
			R-10 (A1-A34)				13									SEE SHEET 13	
			R-13 (C1-C18)				15									SEE SHEET 14	
			R-24 (E1-E32)				20									SEE SHEET 15	
			R-25 (F1-F50)				20									SEE SHEET 16	
			R-6 (G1-G57)				20									SEE SHEET 17	
		R-14	AT R-1		100						2	2				SEE SHEET 19	
			R-14 EXTRA AREAS:														
			A (PARKING LOT)				13	575	370						2	SEE SHEET 19	
			B (PARKING LOT)				10	500	210						2	SEE SHEET 20	
			C (PARKING LOT)					60								SEE SHEET 20	
			D (PARKING LOT)					80	145						1	SEE SHEET 20	
			E (PARKING LOT)					100	75							SEE SHEET 20	
			F (PARKING LOT)				17	4,260	810						8	SEE SHEET 21	
			G (PARKING LOT)				22	1,220	710						3	SEE SHEET 21	
			H (PARKING LOT)					5,920	865						6	SEE SHEET 22	
			SUB-TOTALS					16,660	5,015	3	2	4					
TOTALS CARRIED TO GENERAL SUMMARY					100	130	196	21,675		9			1	1	32		

PAVEMENT MARKING DATA (AUXILIARY)

GUE SALT FORK RESURFACING FY22

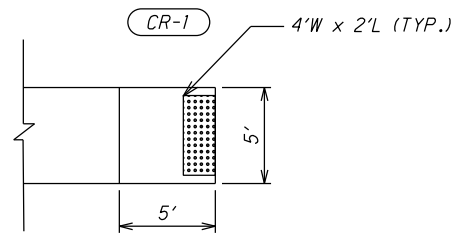
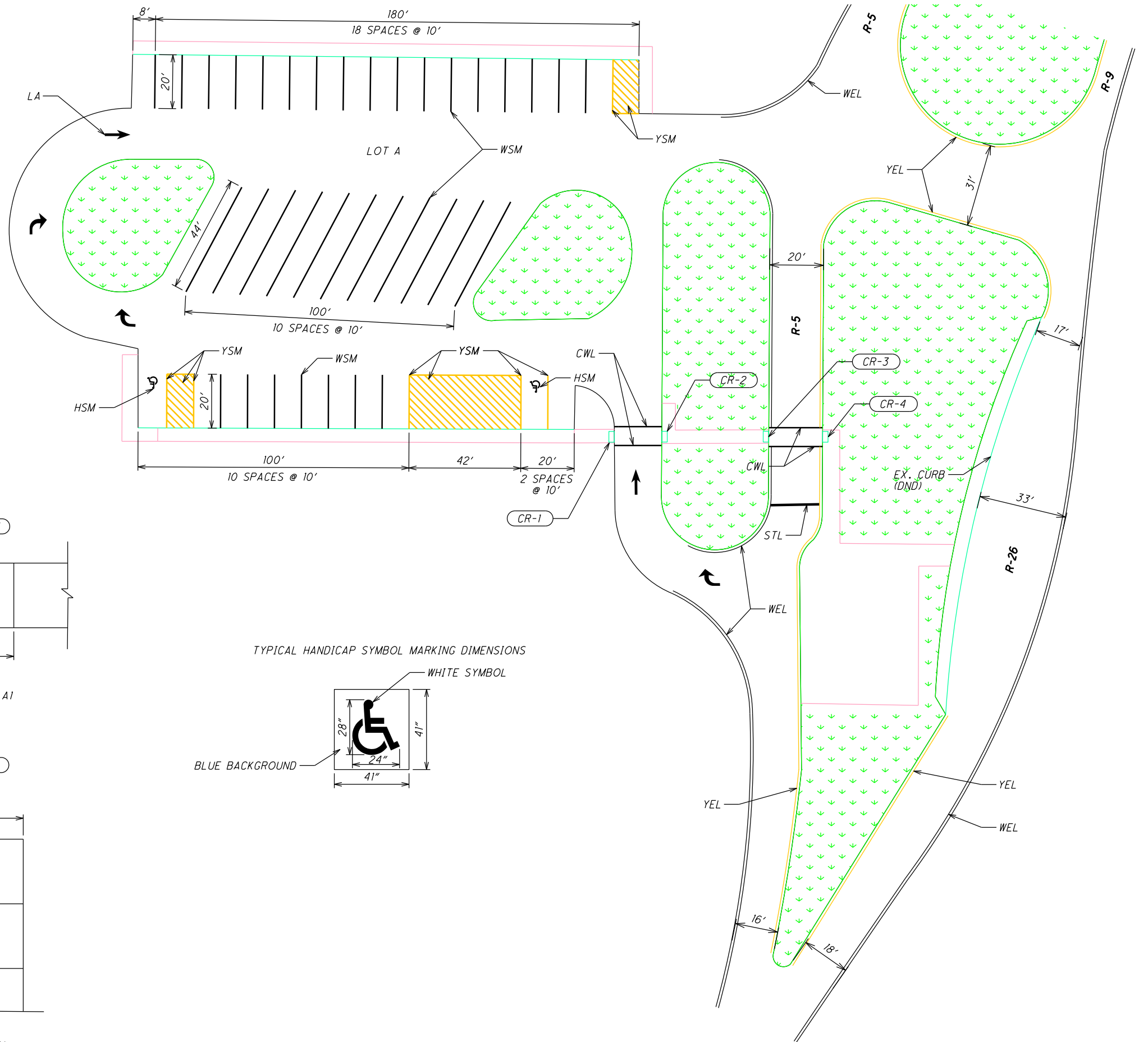
CALCULATED
LIME
CHECKED
JSL

I:\ProjectData\GUE\1160\Design\Roadway\Sheets\1160_T0002.dgn Sheet 12/10/2021 1:46:45 PM jjutzi

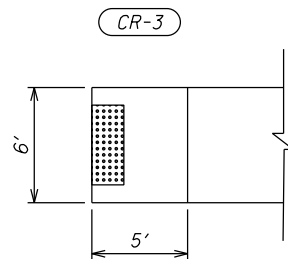
HSM = HANDICAP SYMBOL MARKING
 CWL = CROSSWALK LINE, 12"
 DYC = DOUBLE YELLOW CENTER LINE
 LA = LANE ARROW, 96"
 STL = STOP LINE
 WEL = WHITE EDGE LINE
 WOP = WORD ON PAVEMENT, 96"
 WSM = WHITE PARKING STALL MARKING
 YEL = YELLOW EDGE LINE
 YSM = YELLOW PARKING STALL MARKING

SEE SHEET 5 FOR CURB RAMP QUANTITIES

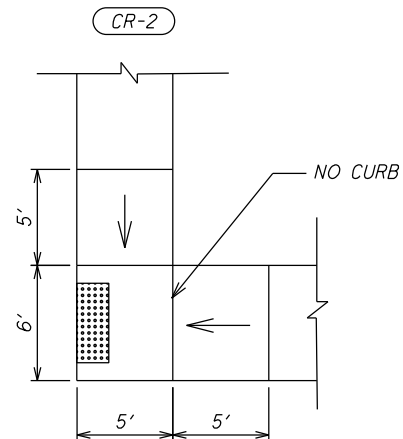
SEE SHEETS 7-8 FOR PAVMENT MARKING QUANTITIES



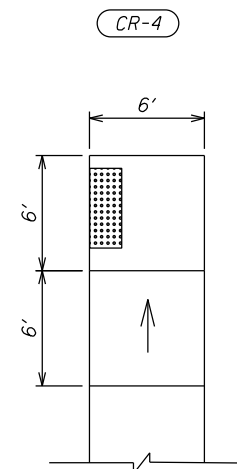
WALK WITH
DETECTABLE WARNING



TYPE A1

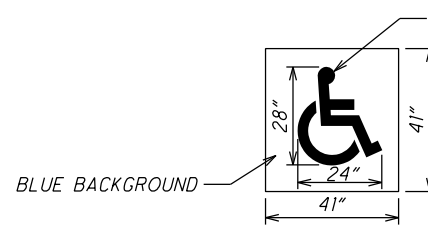


TYPE B1 MODIFIED
(NO BACKSIDE CURB)



TYPE B1

TYPICAL HANDICAP SYMBOL MARKING DIMENSIONS

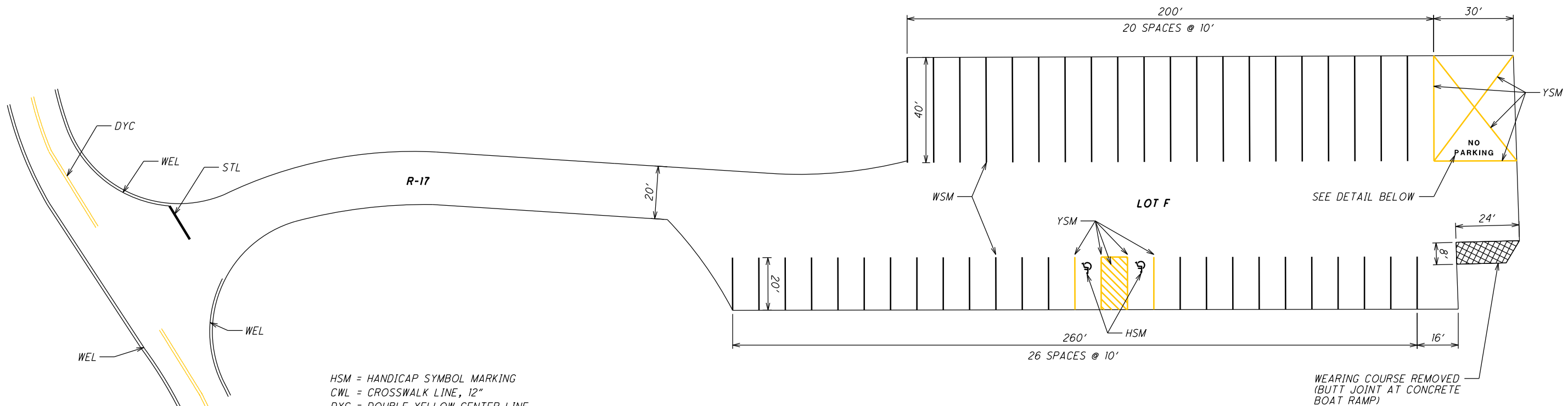


PLAN SHEET
R-5, R-26, LOT A

GUE SALT FORK
RESURFACING FY22

I:\ProjectData\GUE\1160\Design\Roadway\Sheets\1160_GP002.dgn Sheet 12/10/2021 11:45:53 AM jltzlj

I:\Project+Data\GUE\1160\Design\Roadway\Sheets\1160_GPO09.dgn_Sheet 12/10/2021 3:03:59 PM jlutzi

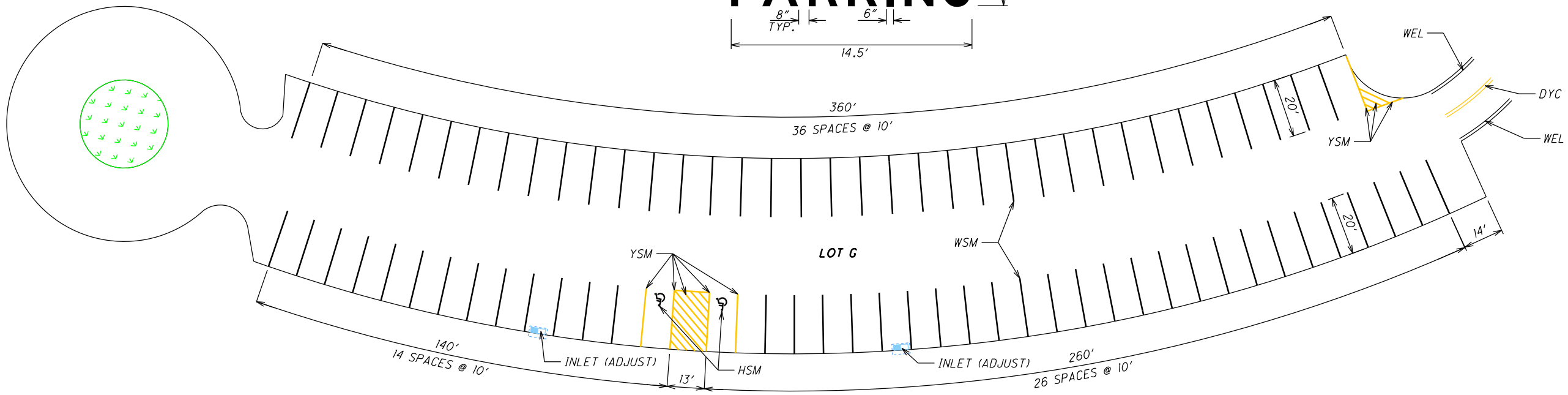
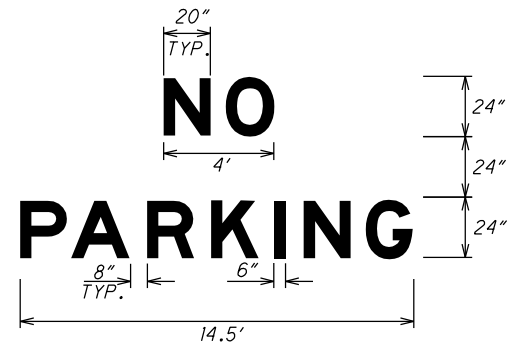


HSM = HANDICAP SYMBOL MARKING
 CWL = CROSSWALK LINE, 12"
 DYC = DOUBLE YELLOW CENTER LINE
 LA = LANE ARROW, 96"
 STL = STOP LINE
 WEL = WHITE EDGE LINE
 WOP = WORD ON PAVEMENT, 96"
 WSM = WHITE PARKING STALL MARKING
 YEL = YELLOW EDGE LINE
 YSM = YELLOW PARKING STALL MARKING

SEE SHEET 5 FOR INLET QUANTITIES
 SEE SHEETS 7-8 FOR PAYMENT MARKING QUANTITIES

ITEM 644, PAVEMENT MARKING, MISC.: NO PARKING DESIGNATION

ONE (1) "NO PARKING" DESIGNATION MARKING, PAID AS EACH, SHALL CONSIST OF THE WORDING AND DIMENSIONS BELOW. THE COLOR SHALL BE YELLOW.



CALCULATED LIME CHECKED JSL

0 20 40
 HORIZONTAL SCALE IN FEET

PLAN SHEET
R-5, R-17, LOT F, LOT G

GUE SALT FORK
RESURFACING FY22

