

p:\ibibentley.com\BIB\Documents\16-127 - Little Miami Scenic Trail Beechmont Connector\5.0 Design (Work)\Phase\00000\roadway\sheets\00000\GN002.dgn 2020-12-14 9:07:01 AM Shirwan.Saeed

ITEM SPECIAL MISC.: CONSULTANT FOR CONCRETE QUALITY CONTROL INCLUDING TESTING AND INSPECTION

ALL CONCRETE SHALL BE TESTED. ALL TESTING, INSPECTION AND QUALITY CONTROL FOR CONCRETE, NOT INCLUDED UNDER QC/QA PAY ITEMS, SHALL BE THE RESPONSIBILITY OF THE CONTRACTOR. THE CONTRACTOR SHALL PROVIDE A CONCRETE TESTING CONSULTANT WITH PREVIOUS EXPERIENCE AND FAMILIARITY IN ODOT PROCEDURES, CONCRETE TESTING REQUIREMENTS AND CONCRETE TESTING DOCUMENTATION. AT LEAST 30 DAYS PRIOR TO CONCRETE PLACEMENT, SUBMIT TO THE ENGINEER FOR APPROVAL, THE PROPOSED CONCRETE TESTING CONSULTANT ALONG WITH THE RESUMES OF THE PROPOSED TESTING PERSONNEL.

TESTING CONCRETE FOR STRUCTURES AND PORTLAND CEMENT CONCRETE PAVEMENT SHALL BE PERFORMED AS OUTLINED IN CMS SPECIFICATIONS 455 RESPECTIVELY.

THROUGH THE CONTRACTOR, THE CONSULTANT SHALL BE RESPONSIBLE FOR ENSURING THAT ALL CONCRETE PLACED IS IN ACCORDANCE WITH THE SPECIFICATIONS. SUCH WORK SHALL BE IN ACCORDANCE WITH THE APPLICABLE CONSTRUCTION AND MATERIAL SPECIFICATIONS AND THE ODOT CONSTRUCTION INSPECTION MANUAL OF PROCEDURES FOR CONCRETE. THE CONCRETE CONSULTANT SHALL PROVIDE THE NECESSARY TRAINED TECHNICIAN(S), ALL EQUIPMENT, AND SHALL FURNISH THE PROJECT ENGINEER WITH TWO (2) COPIES OF ALL TEST RESULTS WITHIN 24 HOURS AFTER COMPLETION OF CONCRETE PLACEMENT.

THE TECHNICIAN SHALL BE ACI LEVEL 1 CERTIFIED AND WILL BE REQUIRED TO DEMONSTRATE HIS/HER COMPETENCE AND EXPERIENCE LEVELS TO THE ENGINEER PRIOR TO BEGINNING WORK. THE ENGINEER WILL ORDER THE CONTRACTOR TO REPLACE ANY TECHNICIAN THAT IS NOT VERSED IN THE REQUIRED TESTING PROCEDURE.

THE TECHNICIAN SHALL VERBALLY NOTIFY THE ODOT PROJECT ENGINEER OF ANY FAILING TEST AND SHALL SUBMIT FOLLOW-UP WRITTEN NOTIFICATION TO THE PROJECT ENGINEER OF REMEDIAL ACTION(S) TAKEN. TESTS SHALL BE TAKEN AS SPECIFIED WITHIN THE CONSTRUCTION AND MATERIAL SPECIFICATIONS, CONCRETE MANUAL OR APPROPRIATE SUPPLEMENTAL SPECIFICATION AS LISTED IN THE PROPOSAL GOVERNING THE PROJECT. IT SHALL BE THE SOLE RESPONSIBILITY OF THE CONTRACTOR TO MAKE IMMEDIATE CORRECTIONS OR ADJUSTMENTS TO THE CONCRETE MIX VIA DIRECT COMMUNICATION WITH THE CONCRETE SUPPLIER'S PLANT PERSONNEL TO MAINTAIN UNINTERRUPTED COMPLIANCE WITH THE SPECIFICATIONS UPON NOTIFICATION OF CONCRETE MIX NON-COMPLIANCE BY THE CONSULTANT TECHNICIAN. THE PROJECT ENGINEER MAY REQUIRE MORE FREQUENT TESTING AS CONDITIONS WARRANT.

UPON COMPLETION OF DAILY CONCRETE PLACEMENT(S), THE CONCRETE CONSULTANT SHALL PROVIDE THE PROJECT ENGINEER WITH DAILY TEST REPORTS, TE-45'S, INSPECTORS DAILY REPORT AND SUPPORTING DOCUMENTATION FOR EACH ITEM OF CONCRETE WORK PERFORMED SEPARATED BY MIX DESIGN. SUBSEQUENTLY, UPON COMPLETION OF AN ENTIRE CONCRETE SPECIFICATION ITEM, THE CONCRETE CONSULTANT SHALL ALSO PROVIDE THE PROJECT ENGINEER WITH TWO (2) COPIES OF AN ADDITIONAL INSPECTION REPORT BY A REGISTERED PROFESSIONAL ENGINEER, STATE OF OHIO, WHICH CONTAINS THE TESTING-RESULTS SUMMARY FOR EACH ITEM BY CONTRACT REFERENCE NUMBER AND THE CONSULTANT'S CONCLUSIONS RELATIVE TO SPECIFICATION COMPLIANCE FOR ALL CONCRETE-TESTING WORK.

THE ODOT PROJECT ENGINEER RESERVES THE RIGHT TO MAKE UNANNOUNCED QUALITY-CONTROL TESTS TO VERIFY PROCEDURES USED AND RESULTS BEING OBTAINED BY THE CONTRACTOR.

THE CONCRETE TECHNICIAN SHALL WORK UNDER THE DIRECTION OF A REGISTERED PROFESSIONAL ENGINEER, STATE OF OHIO, WHO WILL MONITOR THE CONCRETE TEST RESULTS. THE FINAL INSPECTION REPORTS FOR EACH COMPLETED ITEM SHALL BE SIGNED BY A REGISTERED PROFESSIONAL ENGINEER, STATE OF OHIO, CERTIFYING THAT ALL CONCRETE TESTS PROVIDED BY THE CONTRACTOR MET APPLICABLE CONTRACT REQUIREMENTS. A FINAL REPORT ISSUED BY THE CONSULTING FIRM SHALL CONTAIN A CERTIFIED STATEMENT OF COMPLIANCE WITH ODOT SPECIFICATIONS AND ANY OTHER CONCLUSIONS REGARDING THE CONCRETE MATERIALS INCORPORATED INTO THE PROJECT. SUCH STATEMENT SHALL BE SIGNED BY A REGISTERED PROFESSIONAL ENGINEER, STATE OF OHIO. AND, THE CONCRETE CONSULTANT SHALL BE REQUIRED TO ATTEND MONTHLY PROGRESS MEETINGS AS REQUIRED BY THE PROJECT ENGINEER.

ADDITIONALLY, THE CONTRACTOR SHALL BE REQUIRED TO KEEP A POSTED LIST OF BEAM AND CYLINDER IDENTIFICATION NUMBERS FOR THE PURPOSE OF IDENTIFYING THE CORRESPONDING PLACEMENT LOCATION AND CONCRETE SPECIFICATION ITEM.

ITEM SPECIAL MISC.: CONSULTANT FOR CONCRETE QUALITY CONTROL INCLUDING TESTING AND INSPECTION (CONTINUED)

PAYMENT SHALL BE BID AS A LUMP SUM FOR ITEM SPECIAL MISC.: CONSULTANT FOR CONCRETE QUALITY CONTROL INCLUDING TESTING AND INSPECTION. THE ITEM WILL BE PAID FOR AS FOLLOWS:

UPON APPROVAL OF CONSULTANT.....20%
PROGRESSIVE EQUIVALENT PAYMENTS.....50%
UPON SUBMISSION OF FINAL REPORT.....30%

THE TECHNICIAN SHALL HAVE FULL EFFECT AND AUTHORITY OF AN ODOT PROJECT INSPECTOR IN DETERMINING ACCEPTABILITY OF MATERIAL AND CONCRETE PLACEMENT PRACTICES.

THE FOLLOWING ESTIMATED QUANTITIES HAVE BEEN CARRIED TO THE GENERAL SUMMARY:

ITEM SPECIAL-CONSULTANT FOR CONCRETE QUALITY CONTROL INCLUDING TEST AND INSPECTION. LS

ITEM 832 - EROSION CONTROL:

THE FOLLOWING QUANTITY HAS BEEN CARRIED TO THE GENERAL SUMMARY FOR LOCATION, FURNISHING, INSTALLING, AND MAINTAINING TEMPORARY SEDIMENT AND EROSION CONTROL FOR EARTH DISTURBED AREAS.:

ITEM 832 - STORM WATER POLLUTION PREVENTION PLAN	LS
ITEM 832 - STORM WATER POLLUTION PREVENTION INSPECTIONS	LS
ITEM 832 - STORM WATER POLLUTION PREVENTION INSPECTION SOFTWARE	LS
ITEM 832 - EROSION CONTROL	35,000 EACH

ITEM SPECIAL-SETTLEMENT PLATFORMS:

DESCRIPTION: THIS ITEM CONSISTS OF FURNISHING, CONSTRUCTING, AND MAINTAINING SETTLEMENT PLATFORMS AND OBTAINING SETTLEMENT READINGS AS REQUIRED BY THE PLANS OR AS DIRECTED BY THE ENGINEER. AT THE OPTION AND EXPENSE OF THE CONTRACTOR, ADDITIONAL SETTLEMENT PLATFORMS MAY BE INSTALLED AT LOCATIONS APPROVED BY THE ENGINEER. SETTLEMENT READINGS SHALL BE TAKEN WEEKLY DURING CONSTRUCTION AND DURING ANY SPECIFIED WAITING PERIOD. THE READINGS SHALL BE PLOTTED ON GRAPH PAPER PRESENTING DEFORMATION (ON THE NEGATIVE Y-AXIS) AND FILL HEIGHT (ON THE POSITIVE Y-AXIS) VERSUS TIME (ON THE X-AXIS). A COPY OF EACH CUMULATIVE PLOT SHALL BE SENT TO THE DISTRICT GEOTECHNICAL ENGINEER AND THE OFFICE OF GEOTECHNICAL ENGINEERING, ATTENTION: GEOTECHNICAL DESIGN COORDINATOR, AFTER EACH SETTLEMENT READING IS RECORDED.

THE DEPARTMENT WILL CONSIDER VIBRATING WIRE SETTLEMENT MONITORING PLATFORMS IN LIEU OF THE CONVENTIONAL SETTLEMENT PLATFORMS. THE CONTRACTOR SHOULD PROVIDE DETAILS OF THE PROPOSED VIBRATING WIRE SETTLEMENT PLATFORMS AS WELL AS DESIGN DRAWINGS OF THE PROPOSED PLATFORM AND CABLING LAYOUT TO THE ENGINEER AT LEAST 30 DAYS PRIOR TO CONSTRUCTION. THE DEPARTMENT WILL REQUIRE 10 WORKING DAYS FOR REVIEW AND APPROVAL. THE DESIGN DRAWINGS SHOULD ILLUSTRATE THE PROPOSED SETTLEMENT VIBRATING WIRE SETTLEMENT PLATFORM LOCATIONS WITH ALL EXISTING AND PROPOSED SITE FEATURES TO VERIFY THE PROPOSED CABLING WILL NOT CONFLICT WITH EXISTING FACILITIES, PROPOSED FACILITIES OR UTILITIES. NO ADDITIONAL PAYMENT WILL BE PROVIDED IF THE CONTRACTOR ELECTS TO UTILIZE VIBRATING WIRE SETTLEMENT PLATFORMS.

MATERIALS: SOUND LUMBER SUCH AS 3/4 INCH EXTERIOR GRADE PLYWOOD SHALL BE USED FOR THE BASE. THE PIPE SHALL BE 2 1/2" STANDARD BLACK PIPE WITH THREADED FITTINGS AS SHOWN ON THE PLANS. A STEEL PLATE 36"x36"x1/8" MAY BE SUBSTITUTED FOR THE LUMBER FOR THE PLATFORMS, AT CONTRACTORS OPTION.

CONSTRUCTION REQUIREMENTS: THE 36"x36" PLATFORM SHALL BE CONFORM TO THE DETAILS SHOWN ON THE PLANS. THE PLATFORM SHALL BE SET ON A LEVEL SURFACE. THE PIPES SHALL BE FIRMLY SECURED TO THE PLATFORMS AND SHALL BE MAINTAINED IN PLUMB POSITION DURING THE PLACEMENT OF THE EMBANKMENT. PIPES SHALL BE MARKED AT INTERVALS BY THE CONTRACTOR TO FACILITATE MEASUREMENT OF THE DEPTH OF FILL. THE CONTRACTOR SHALL STOP WORK IN ANY LOCATION WHERE A SETTLEMENT PLATFORM HAS BEEN DISTURBED OR DAMAGED UNTIL THE NECESSARY CORRECTIONS OR REPLACEMENT HAS BEEN PERFORMED.

ITEM SPECIAL-SETTLEMENT PLATFORMS CONT.:

PRIOR TO PAVING, THE TOP OF THE SETTLEMENT PLATFORM PIPE SHALL BE CUT OFF 2 FEET BELOW THE FINISHED SURFACE OF THE SUBGRADE OR TOPSOIL SURFACE, WHICHEVER IS APPLICABLE.

METHOD OF MEASUREMENT: THE NUMBER OF SETTLEMENT PLATFORMS TO BE PAID FOR WILL BE THE ACTUAL NUMBER OF SETTLEMENT PLATFORMS COMPLETED, MAINTAINED, AND ACCEPTED BY THE ENGINEER.

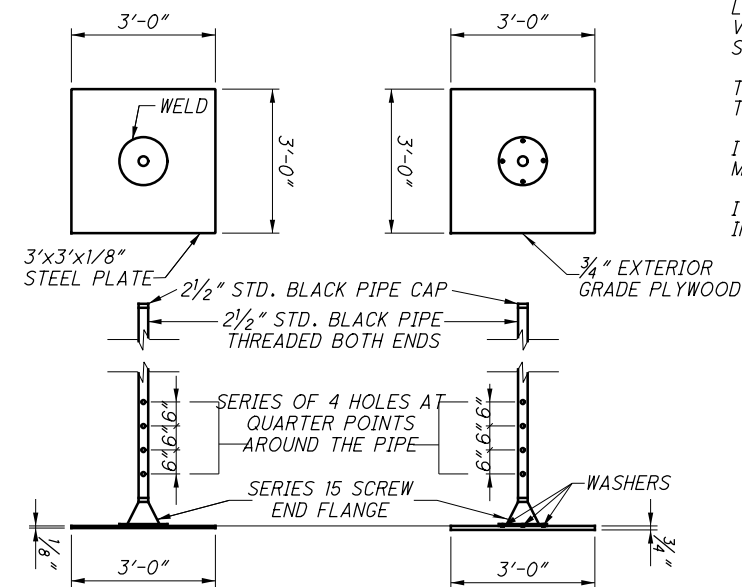
BASIS OF PAYMENT: PAYMENT WILL BE MADE AT THE CONTRACT UNIT PRICE PER EACH FOR 'ITEM SPECIAL, SETTLEMENT PLATFORMS' WHICH IS COMPENSATED FOR CONSTRUCTION, MAINTAINING AND MONITORING THE SETTLEMENT PLATFORMS INCLUDING FURNISHING ALL LABOR, EQUIPMENT, MATERIALS AND INCIDENTALS NECESSARY TO COMPLETE THIS WORK. PAYMENT WILL NOT BE MADE FOR SETTLEMENT PLATFORMS WHICH BECOME USELESS BECAUSE OF DAMAGE INFLICTED BY THE CONTRACTOR'S OPERATIONS.

THE FOLLOWING ESTIMATED QUANTITIES HAVE BEEN CARRIED TO THE GENERAL SUMMARY:

ITEM SPECIAL - SETTLEMENT PLATFORMS 5 EACH

WAITING PERIOD:

FROM STATION 23+00 TO 28+00 A SETTLEMENT WAITING PERIOD IS REQUIRED AFTER EMBANKMENT PLACEMENT TO THE DESIGN SUBGRADE LEVEL. THE ANTICIPATED WAITING EMBANKMENT WAITING PERIOD IS 60 DAYS. INCLUDE SPECIFIC ACTIVITIES IN THE CONSTRUCTION SCHEDULE FOR THE SETTLEMENT WAITING PERIOD. THE WAITING PERIOD SHALL NOT BE CONSIDERED TO BEGIN UNTIL ALL FILL LOADING HAS BEEN PLACED TO THE DESIGN SUBGRADE LEVEL. PLACEMENT OF THE AGGREGATE BASED, PAVING SHALL OF THE PATH AND OTHER CONSTRUCTION ITEMS IN FROM 23+00 TO 28+00 BEGIN CANNOT BEGIN UNTIL SETTLEMENT WAITING PERIOD HAS BEEN TERMINATED BY THE ENGINEER. THE ENGINEER WILL EVALUATE THE WEEKLY SETTLEMENT PLATFORM READINGS FOR OVERALL SETTLEMENT RATE AND MAGNITUDE AND THE WAITING PERIOD MAY BE TERMINATED PRIOR EARLY OR EXTENDED BASED ON THE SETTLEMENT MONITORING DATA. THE SETTLEMENT PERIOD CAN BE TERMINATED IF THE READINGS ILLUSTRATE ONE-EIGHTH OF AN INCH OR LESS OF SETTLEMENT PER WEEK FOR TWO CONSECUTIVE WEEKS.



NOTES:

1. SETTLEMENT PLATES SHALL BE PLACED AT THE LOCATIONS INDICATED ON THE PLAN PROFILE SHEETS UNLESS OTHERWISE DIRECTED BY THE ENGINEER.
2. CONTRACTOR HAS OPTION OF USING EITHER STEEL OR PLYWOOD PLATFORM BASE.
3. CONTRACTOR SHALL FURNISH MATERIALS AND LABOR TO EXTEND PIPE UP THROUGH ENTIRE FILL.
4. SETTLEMENT PLATFORMS SHALL BE ANCHORED BY STAKES DRIVEN AT EACH CORNER TO PREVENT OVERTURNING.
5. CLEARLY MARK THE VERTICAL PIPE IN 1 FT. ELEVATION INTERVALS FROM THE BOTTOM OF THE PLATFORM TO THE TOP OF THE PLATFORM. MAINTAIN ELEVATION DESIGNATION MARKS THROUGHOUT CONSTRUCTION.

CONSTRUCTION ACCESS

CONTRACTOR WILL HAVE LIMITED ACCESS TO THE PARKING LOT NORTHEAST OF THE PROJECT OFF OF STATE ROUTE 32 LOCATED ON GREAT PARKS OF HAMILTON COUNTY PROPERTY. NO MATERIAL OR EQUIPMENT SHALL BE STORED IN A MANNER THAT LIMITS ACCESS TO THIS PARKING LOT. ADDITIONALLY, THE CONTRACTOR SHALL REPAIR THE PARKING LOT AND PROPERTY ADJACENT TO THE PARKING LOT IF ANY DAMAGE OCCURS DURING CONSTRUCTION.

ITEM SPECIAL-SANITARY SEWER, MSD SANITARY SEWER PROTECTION ITEM SPECIAL - SANITARY CONDUIT INSPECTION

THE CONTRACTOR SHALL BE REQUIRED TO PROTECT ALL MSD SANITARY SEWER FACILITIES LOCATED WITHIN THE PROJECT CONSTRUCTION LIMITS. SPECIAL CARE MUST BE TAKEN TO ASSURE NO HARM TO THE MSD SEWER SYSTEM OCCURS DURING CONSTRUCTION ACTIVITIES INCLUDING EXCAVATION, DRILLING, OR EXCESSIVE WEIGHTS OVER THE SYSTEM.

IN ADDITION, THE CONTRACTOR SHALL BE REQUIRED TO PERFORM THREE VIDEO INSPECTIONS TO VIDEO INSPECT THE SANITARY SEWER FACILITIES BEFORE EMBANKMENT CONSTRUCTION, AT THE END OF THE EMBANKMENT WAITING PERIOD, AND AT THE END OF THE PROJECT. THE SECTION OF SEWER PIPE WITHIN THE PROPOSED FILL LIMITS SHALL BE INSPECTED. THE CONTRACTOR SHALL CONTACT WASTEWATER COLLECTION (WWC) DIVISION OF MSD (513-352-4204) AND REQUEST ADVANCE NOTIFICATION/COORDINATION OF AT LEAST 7 DAYS PRIOR TO ANY VIDEO WORK. ONE (1) COPY OF THE VIDEO INSPECTION SHALL BE PROVIDED TO THE PROJECT ENGINEER AND MSD FOR REVIEW. IF DAMAGE IS FOUND IN THE VIDEO INSPECTIONS, THE CONTRACTOR SHALL DOCUMENT THE DAMAGE AND PROVIDE THE DOCUMENTATION TO THE PROJECT ENGINEER. REPAIRS, IF ANY, WOULD BE PERFORMED BY THE DEPARTMENT AND PAID FOR UNDER C&MS 109.05.

THE CONTRACTOR SHALL BE RESPONSIBLE FOR OBTAINING AN MSD PERMIT, AND FOR PAYING FOR AND OBTAINING THE REQUIRED BONDS.

THE CONTRACTOR SHALL OBTAIN A PERMIT AND PAY REQUIRED BOND FOR ALL MSD WORK ON THIS PROJECT.

THE INSPECTION VIDEO SHALL BE VIA CCTV PER PACP & MSD REQUIREMENTS. SUBMIT THE INSPECTION VIDEO WITH THE PERMIT APPLICATION.

ALL LABOR, MATERIALS AND INCIDENTALS FOR THE ABOVE WORK SHALL BE PAID FOR BY LUMP SUM, ITEM SPECIAL - SANITARY SEWER, MSD SANITARY SEWER PROTECTION. ALL LABOR, MATERIALS AND INCIDENTALS ASSOCIATED WITH THE VIDEO INSPECTIONS SHALL BE PAID FOR BY EACH, ITEM SPECIAL - SANITARY CONDUIT INSPECTION.

THE FOLLOWING ESTIMATED QUANTITIES HAVE BEEN CARRIED TO THE GENERAL SUMMARY:

ITEM SPECIAL - SANITARY SEWER, MSD SANITARY SEWER PROTECTION	LS
ITEM SPECIAL - SANITARY CONDUIT INSPECTION	3 EACH

ADDENDUM 5 - 12-14-2020

CALCULATED
JAG
CHECKED
SRB

GENERAL NOTES

HAM LMST BEECHMONT BRIDGE - PT 1

p:\ibibentley.com\BIB\Documents\16-127 - Little Miami Scenic Trail Beechmont Connector\5.0 Design (Work) Phase\00000\roadway\sheets\00000GN004.dgn 2020-12-13 8:02:25 PM Shirwan.Saeed

PUBLIC LANDS AND FACILITIES

GENERAL:
 THE PROJECT AND WORK TO BE PERFORMED ARE LOCATED WITHIN OR ABUTTING PUBLIC LANDS AND FACILITIES PROTECTED UNDER SECTION 4(F) OF THE U.S. DEPARTMENT OF TRANSPORTATION (USDOT) ACT OF 1966 (23 CFR PART 774). THESE PUBLIC LANDS AND FACILITIES INCLUDE THE EXISTING SEGMENTS OF THE LITTLE MIAMI SCENIC TRAIL (PAVED MULTI-USE BIKE/PEDESTRIAN TRAIL) AND ASSOCIATED PARKING AND TRAILHEAD AREA; THE LITTLE MIAMI RIVER (DESIGNATED AND MANAGED AS A STATE AND FEDERAL SCENIC RIVER), INCLUDING ITS SURFACE WATERS AND BANKS; AND THE PUBLIC LANDS, PASSIVE RECREATION AREAS AND GREENSPACE ALONG THE RIVER AND TRAIL. THE PROVISIONS OF THIS SECTION ARE FEDERAL REQUIREMENTS TO AVOID OR MINIMIZE CONSTRUCTION PERIOD IMPACTS ON THESE SECTION 4(F) PUBLIC LANDS AND FACILITIES.

TEMPORARY CONSTRUCTION FENCING FOR RESOURCES WITHIN OR ABUTTING CONSTRUCTION LIMITS:
 TO PROTECT THE PUBLIC LANDS AND FACILITIES ALONG THE LITTLE MIAMI RIVER (INCLUDING THE RIVER ITSELF, AS WELL AS THE ASSOCIATED MULTI-USE TRAIL AND PASSIVE RECREATION LANDS AND GREENSPACE) AND THE PUBLIC, THE CONTRACTOR SHALL INSTALL AND MAINTAIN SECURE AND COMPLETE TEMPORARY CONSTRUCTION FENCING ALONG THE LANDSIDE BOUNDARIES OF THE PROJECT CONSTRUCTION LIMITS PRIOR TO THE START OF CONSTRUCTION ACTIVITIES.

APPROPRIATE SIGNAGE:
 PRIOR TO THE START OF CONSTRUCTION ACTIVITIES, THE CONTRACTOR SHALL INSTALL SIGNAGE APPROVED BY THE ENGINEER TO TRAIL, LANDS AND RIVER USERS OF CONSTRUCTION ACTIVITIES AND ACCESS RESTRICTIONS OR CLOSURES, AND TO DIRECT USERS TO SECONDARY ACCESS POINTS.

ADVISORY AND SAFETY TEMPORARY SIGNS/BUOYS/MARKERS ARE TO BE PLACED 300 FEET UPSTREAM AND DOWNSTREAM OF THE PROJECT AREA TO ALERT BOATERS OF CONSTRUCTION ACTIVITY AND PROVIDE INSTRUCTIONS TO SAFELY NAVIGATE AROUND/THROUGH/OR AVOID THE PROJECT AREA.

PORTAGE TEMPORARY SIGNAGE IS TO BE PLACED AT THE NEAREST UPSTREAM AND DOWNSTREAM PUBLIC ACCESS POINTS (ARMELDER PARK AND MAGRISH PARK, RESPECTIVELY) THAT PROVIDE INFORMATION ABOUT THE DURATION OF POSSIBLE RECREATIONAL IMPACTS AND PROVIDE PORTAGE AND RE-ROUTING INSTRUCTIONS FOR PADDLERS.

PERMANENT SCENIC RIVER PERMANENT SIGNS SHALL BE POST-MOUNTED ON THE RIGHT-HAND SIDE OF THE TRAIL ON BOTH TRAIL BRIDGE APPROACHES APPROXIMATELY 50 FEET FROM THE START OF THE ON-BRIDGE TRAIL SECTION. THE SIGNS SHALL BE MUTCD STANDARD FOR PARKS AND RECREATION FACILITIES FOR LOW-SPEED/NON-ROADWAY CONDITIONS, 18" X 18", AND SHALL HAVE A WHITE MESSAGE AND WHITE BORDER ON A BROWN BACKGROUND. THE SIGN MESSAGE SHALL READ: LITTLE MIAMI STATE AND NATIONAL SCENIC RIVER. A PERMANENT SIGN OF APPROPRIATE SIZE, SCALE AND COLORS, APPROVED BY THE PROJECT ENGINEER, SHALL BE INSTALLED ON THE DOWNSTREAM SIDE OF THE NEW LITTLE MIAMI SCENIC TRAIL BRIDGE, WITH APPROVED MESSAGE TO INCLUDE: BRIDGE/TRAIL NAME AND LITTLE MIAMI RIVER MILE. SEE SHEETS 61-62 FOR DETAILS.

THE CONTRACTOR SHALL PLACE THE SIGNS IN LOCATIONS AS APPROVED BY THE ENGINEER. ALL LABOR, EQUIPMENT, AND MATERIALS ASSOCIATED WITH TEMPORARY SIGNAGE SHALL BE CONSIDERED INCIDENTAL TO ITEM 614 - MAINTAINING TRAFFIC.

STORING/ STAGING RESTRICTIONS:
 THE CONTRACTOR SHALL NOT STORE OR STAGE CONSTRUCTION EQUIPMENT OR MATERIALS WITHIN THE BOUNDARIES OF THE PUBLIC LANDS AND FACILITIES ALONG THE LITTLE MIAMI RIVER (INCLUDING THE RIVER ITSELF, AS WELL AS THE ASSOCIATED MULTI-USE TRAIL AND PASSIVE RECREATION LANDS AND GREENSPACE), OUTSIDE OF PROPOSED CONSTRUCTION LIMITS, EXCEPT FOR AREA(S) APPROVED BY THE OFFICIAL WITH JURISDICTION (GREAT PARKS OF HAMILTON COUNTY; ODNR) SPECIFICALLY FOR STORAGE AND STAGING OF EQUIPMENT PER CMS 107.10.

COORDINATE CONSTRUCTION SCHEDULE:
 THE CONTRACTOR SHALL BE REQUIRED TO CLOSELY COORDINATE THE CONSTRUCTION SCHEDULE WITH THE ODNR TRAILS ADMINISTRATOR, GREAT PARKS OF HAMILTON COUNTY, AND ODOT PRIOR TO THE START OF CONSTRUCTION ACTIVITIES AND PROVIDE REGULAR UPDATES, ESPECIALLY DURING THE PEAK PERIOD OF MAY 1-OCTOBER 15. THE CONTRACTOR SHALL NOTIFY THE CONSTRUCTION ENGINEER AND GREAT PARKS OF HAMILTON COUNTY AT LEAST 24 HOURS IN ADVANCE OF CONSTRUCTION ACTIVITIES THAT WILL RESTRICT ACCESS TO THE TRAIL. DUE TO THE ANTICIPATED NATURE AND COMPLEXITY OF CONSTRUCTION ACTIVITIES, IT MAY NOT BE POSSIBLE TO REMOVE RESTRICTIONS TO RECREATIONAL BOATING DURING SUMMER HOLIDAYS AND/OR WEEKENDS.

PUBLIC LANDS AND FACILITIES

MAINTAIN ACCESS TO PROPERTY:
 THE CONTRACTOR SHALL MAINTAIN SAFE AND SECURE PUBLIC ACCESS TO THE PUBLIC LANDS AND FACILITIES ALONG THE LITTLE MIAMI RIVER (INCLUDING THE RIVER ITSELF, AS WELL AS THE ASSOCIATED MULTI-USE TRAIL AND PASSIVE RECREATION LANDS AND GREENSPACE) AT ALL TIMES DURING CONSTRUCTION ACTIVITIES, EXCEPT AS PERMITTED FOR SCHEDULED AND APPROVED CLOSURES NEEDED TO MAINTAIN WORKER AND PUBLIC SAFETY, BY USE OF FLAGGING OPERATIONS AND/OR A DETOUR APPROVED BY THE PROJECT ENGINEER, AND AS IDENTIFIED ELSEWHERE IN THESE NOTES. BECAUSE THERE ARE MIXED USES OF THE PUBLIC WATERS AND LANDS THROUGH THE PROJECT SITE, THE CONTRACTOR IS ADVISED THAT CONDITIONS OF ACTIVITY AND USE MAY DICTATE SPECIAL AND IMMEDIATE COORDINATION AND CONTROL ACTIONS FOR THE PROJECT BOTH PUBLIC AND WORKER SAFETY, AND SHALL ADVISE THE PROJECT ENGINEER IMMEDIATELY OF ANY SUCH CONDITIONS THAT MAY AFFECT EITHER PLANNED ACCESS OR SPECIFIC SAFETY MEASURES.


MAINTAIN ACCESS; RESTRICT ONLY WHEN NECESSARY:
 THE CONTRACTOR SHALL ONLY RESTRICT PUBLIC ACCESS TO THE PUBLIC LANDS AND FACILITIES ALONG THE LITTLE MIAMI RIVER (INCLUDING THE RIVER ITSELF, AS WELL AS THE ASSOCIATED MULTI-USE TRAIL AND PASSIVE RECREATION LANDS AND GREENSPACE) FOR TIME PERIODS NEEDED TO COMPLETE CONSTRUCTION ACTIVITIES THAT COULD COMPROMISE PUBLIC OR WORKER SAFETY. ACCESS TO THE PUBLIC LANDS AND FACILITIES ALONG THE LITTLE MIAMI RIVER (INCLUDING THE RIVER ITSELF, AS WELL AS THE ASSOCIATED MULTI-USE TRAIL AND PASSIVE RECREATION LANDS AND GREENSPACE) SHALL REMAIN OPEN TO THE PUBLIC AT ALL OTHER TIMES THROUGHOUT CONSTRUCTION. CLOSURES AND ACCESS RESTRICTIONS SHALL BE DISCUSSED AT EVERY PROGRESS MEETING, AND OTHERWISE COORDINATED AT LEAST WEEKLY OR AS NEEDED. THE PROJECT ENGINEER SHALL NOTIFY THE ODNR TRAILS ADMINISTRATOR WHEN WATER ACCESS RESTRICTIONS TO BOATERS AND PADDLERS ON THE RIVER THROUGH THE SITE WILL LAST LONGER THAN ONE (1) CONSECUTIVE DAY. FOR SHORTER TERM RIVER USE INTERRUPTIONS (< 1 DAY), FLAGGERS OR OTHER MEANS WILL BE UTILIZED TO ALERT PUBLIC RIVER TRAFFIC OF RIVER CLOSURES.

THE PROJECT ENGINEER SHALL NOTIFY THE ODNR TRAILS ADMINISTRATOR 14 CALENDAR DAYS PRIOR TO THE START OF CONSTRUCTION ACTIVITIES TO ALLOW ODNR TO POST NOTICE OF IMPENDING PROJECT CONSTRUCTION ON THE APPROPRIATE ODNR WEBPAGES AND ASSOCIATED ONLINE BOATING MAPS. AS PART OF NOTIFICATION EFFORTS, THE PROJECT ENGINEER SHALL ALSO PROVIDE PLANS THAT INDICATE SIGNAGE LOCATION ALONG THE WATERWAY AND ANY ADDITIONAL PLANNED NOTIFICATION EFFORTS WITH ODNR THAT WILL TAKE PLACE DURING OR AFTER CONSTRUCTION. THE ODNR TRAILS ADMINISTRATOR WILL BE NOTIFIED WHEN THE PROJECT IS COMPLETE, AND ALL SIGNAGE HAS BEEN REMOVED.

SCENIC RIVER FLOODPLAIN

ANY AND ALL CONSTRUCTION DEBRIS, EARTHEN DEBRIS, EXCESS ASPHALT OR CONCRETE, WOOD DEBRIS FROM CLEARING, EXCESS FILL MATERIAL, AND TRASH SHOULD BE DISPOSED OF AT AN APPROVED UPLAND SITE OR LAND FILL ABOVE FEMA 100-YEAR FLOOD ELEVATIONS. DISPOSAL OF ANY SUCH MATERIALS WITHIN 1000 FEET OF THE LITTLE MIAMI RIVER IS PROHIBITED. THE CONTRACTOR SHALL KEEP ALL IDLE EQUIPMENT, FUELS, LUBRICANTS, AND ANY STORAGE FOR/POTENTIALLY TOXIC OR HAZARDOUS MATERIALS OUT OF THE FEMA DESIGNATED SPECIAL FLOOD HAZARD AREA (ZONES AE AND A).

WATERWAY PERMITS

 FEDERAL AND STATE WATERWAY PERMITS ARE PENDING FOR THIS PROJECT AND WILL BE OBTAINED BY ODOT. SEE SPECIAL PROVISIONS IN THE CONTRACT DOCUMENT FOR WATERWAY PERMIT CONDITIONS, OF WHICH THE CONTRACTOR MUST COMPLY.

STORMWATER PERMITS

THIS PROJECT HAS AN ESTIMATED EARTH DISTURBED AREA OF 6.34 ACRES. NOI, SWPPP AND COMPLIANCE SUBMITTALS ARE REQUIRED UNDER OHIO EPA PERMIT NO.: OHCO00005 (CONSTRUCTION GENERAL NPDES PERMIT FOR STORMWATER). THE REQUIRED NPDES SHALL BE OBTAINED BY THE CONTRACTOR PRIOR TO CONSTRUCTION AND SUBMITTED TO THE PROJECT ENGINEER FOR NOTIFICATION. SEE SPECIAL PROVISIONS PACKAGE SPP IN THE CONTRACT DOCUMENTS FOR PERMIT CONDITIONS OF PERFORMANCE REQUIRED OF THE CONTRACTOR.

FLOODPLAIN PERMITS

SPECIAL FLOODPLAIN ACTIVITY PERMITS HAVE BEEN ISSUES FOR THIS PROJECT. A "CERTIFICATE OF COMPLETION" WILL BE REQUIRED TO BE SUBMITTED TO THE HAMILTON COUNTY DEPARTMENT OF PLANNING & DEVELOPMENT FLOODPLAIN MANAGEMENT DIVISION AT PROJECTS END TO VERIFY THAT THE COMPLETED BRIDGE PROJECT MEETS ALL NFIP STANDARDS. SEE SPECIAL PROVISIONS PACKAGE SPP IN THE CONTRACT DOCUMENTS FOR PERMIT CONDITIONS OF PERFORMANCE REQUIRED OF THE CONTRACTOR.

WETLANDS

THERE ARE 5 SMALL WETLANDS ON THE PROJECT SITE. WETLANDS 1, 2 AND 5 (PLAN SHEET 24) ARE TO BE FILLED AS PART OF PROJECT EARTHWORK (SEE ADDITIONAL NOTES BELOW REGARDING NON-REGULATORY REPLACEMENT AND MITIGATION OF THESE 3 WETLANDS). WETLANDS 3 AND 4 ARE JUST OUTSIDE THE PROJECT WORK LIMITS ARE NOT TO BE DISTURBED IN THE COURSE OF WORK.

FOR WETLANDS 1, 2 AND 5, THE TOP 9 INCHES (AVERAGE DEPTH) OF SOIL AND ORGANIC MATERIAL WITHIN THE APPROXIMATE EXISTING WETLAND BOUNDARY, AS FLAGGED IN THE FIELD, IS TO BE STRIPPED AND STOCKPILED NEARBY. IN THE COURSE OF FINAL GRADING AND DRAINAGE WORK, NEW REPLACEMENT WETLAND AREAS WILL BE GRADED BACK IN TO THE FINISH LANDSCAPE IN GENERAL CONSISTENCY WITH DEPTH AND CONFIGURATION OF THE EXISTING WETLANDS, AS DIRECTED BY THE PROJECT ENGINEER, WITH A FINISH LAYER OF THE STOCKPILED SOIL AND ORGANIC MATERIAL. THIS WORK WILL BE PAID FOR UNDER ITEM 203, EXCAVATION AND EMBANKMENT. THE REPLACEMENT WETLAND WORK IS NOT PART OF THE REGULATORY OR WATERWAY PERMIT OBLIGATION FOR THE PROJECT.

INTERIM COMPLETION REQUIREMENTS

THE PROJECT HAS AN INTERIM COMPLETION DATE OF 6/3/2022. ON OR BEFORE THE INTERIM COMPLETION DATE, VEHICULAR, BICYCLE AND PEDESTRIAN TRAFFIC MUST BE PLACED IN THEIR FINAL CONFIGURATIONS PROVIDING FULL TIME USE OF THE FACILITY.

THE CONTRACT WILL BE SUBJECT TO DAILY DISINCENTIVES FOR FAILURE TO COMPLETE ALL THE REQUIRED WORK, AND ASSOCIATED INCIDENTALS RELATED TO THE WORK, AS OUTLINED IN THE TABLE INCLUDED IN THIS NOTE. APPLICATION OF THE DISINCENTIVES WILL BE BASED ON THE OVERALL CONTRACT AMOUNT. DAILY DISINCENTIVES ARE APPLICABLE TO THE WORK REQUIRED TO THE INTERIM COMPLETION DATE ONLY. THE CONTRACT IS STILL SUBJECT TO LIQUIDATED DAMAGES AS OUTLINED IN CMS 108.07 FOR THE REMAINDER OF THE CONTRACT.

SCHEDULE OF DAILY DISINCENTIVES FOR FAILURE TO MEET THE INTERIM COMPLETION REQUIREMENTS		
ORIGINAL CONTRACT AMOUNT (TOTAL AMOUNT AT THE TIME OF BIDDING)	DAILY DISINCENTIVE FOR EACH FULL OR PARTIAL CALENDAR DAY OF TIME OVERRUN BEYOND THE PLAN INTERIM COMPLETION DATE	
FOR MORE THAN	TO AND INCLUDING	
\$0.00	\$500,000	\$800
\$500,000	\$1,000,000	\$1,200
\$1,000,000	\$5,000,000	\$2,500
\$5,000,000	\$10,000,000	\$3,500
\$10,000,000	\$50,000,000	\$5,000
OVER \$50,000,000		\$7,500

 ADDENDUM 5 - 12-14-2020

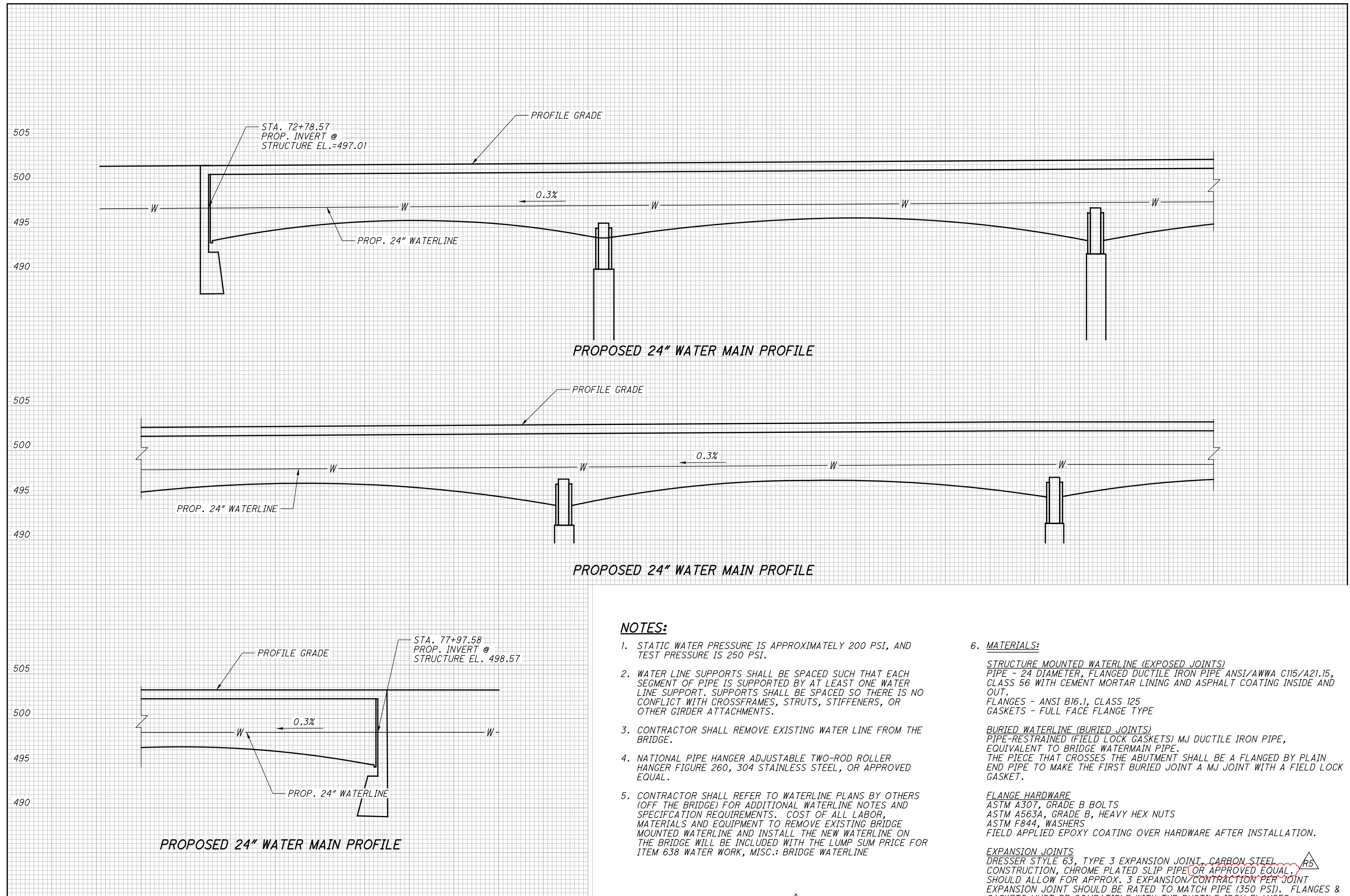
CALCULATED
 JAG
 CHECKED
 SRB

GENERAL NOTES

HAM LMST BEECHMONT BRIDGE - PT 1

8A
 127

pw:bentley.com:ibi:Documents:16-127 - Little Miami Scenic Trail Beechmont Connector:5.0 Design (Work) Phase:00000:Structures:HAW032_0127:sheets:032_0127C_UF001.dgn 2020-12-13 8:21:02 PM Shirwan.S



NOTES:

1. STATIC WATER PRESSURE IS APPROXIMATELY 200 PSI, AND TEST PRESSURE IS 250 PSI.
2. WATER LINE SUPPORTS SHALL BE SPACED SUCH THAT EACH SEGMENT OF PIPE IS SUPPORTED BY AT LEAST ONE WATER LINE SUPPORT. SUPPORTS SHALL BE SPACED SO THERE IS NO CONFLICT WITH CROSSFRAMES, STRUTS, STIFFENERS, OR OTHER GIRDER ATTACHMENTS.
3. CONTRACTOR SHALL REMOVE EXISTING WATER LINE FROM THE BRIDGE.
4. NATIONAL PIPE HANGER ADJUSTABLE TWO-ROD ROLLER HANGER FIGURE 260, 304 STAINLESS STEEL, OR APPROVED EQUAL.
5. CONTRACTOR SHALL REFER TO WATERLINE PLANS BY OTHERS (OFF THE BRIDGE) FOR ADDITIONAL WATERLINE NOTES AND SPECIFICATION REQUIREMENTS. COST OF ALL LABOR, MATERIALS AND EQUIPMENT TO REMOVE EXISTING BRIDGE MOUNTED WATERLINE AND INSTALL THE NEW WATERLINE ON THE BRIDGE WILL BE INCLUDED WITH THE LUMP SUM PRICE FOR ITEM 638 WATER WORK, MISC.: BRIDGE WATERLINE
6. **MATERIALS:**
 - STRUCTURE MOUNTED WATERLINE (EXPOSED JOINTS)**
 PIPE - 24 DIAMETER, FLANGED DUCTILE IRON PIPE ANSI/AWWA C115/A21.15, CLASS 56 WITH CEMENT MORTAR LINING AND ASPHALT COATING INSIDE AND OUT.
 FLANGES - ANSI B16.1, CLASS 125
 GASKETS - FULL FACE FLANGE TYPE
 - BURIED WATERLINE (BURIED JOINTS)**
 PIPE-RESTRAINED (FIELD LOCK GASKETS) MJ DUCTILE IRON PIPE, EQUIVALENT TO BRIDGE WATERMAIN PIPE.
 THE PIECE THAT CROSSES THE ABUTMENT SHALL BE A FLANGED BY PLAIN END PIPE TO MAKE THE FIRST BURIED JOINT A MJ JOINT WITH A FIELD LOCK GASKET.
 - FLANGE HARDWARE**
 ASTM A307, GRADE B BOLTS
 ASTM A563A, GRADE B, HEAVY HEX NUTS
 ASTM F844, WASHERS
 FIELD APPLIED EPOXY COATING OVER HARDWARE AFTER INSTALLATION.
 - EXPANSION JOINTS**
 DRESSER STYLE 63, TYPE 3 EXPANSION JOINT, CARBON STEEL CONSTRUCTION, CHROME PLATED SLIP PIPE OR APPROVED EQUAL. SHOULD ALLOW FOR APPROX. 3 EXPANSION/CONTRACTION PER JOINT. EXPANSION JOINT SHOULD BE RATED TO MATCH PIPE (350 PSI). FLANGES & GASKETS MUST BE COMPATIBLE WITH THE DUCTILE IRON FLANGES.

ADDENDUM 5 - 12-14-2020

DESIGNED	BCS	CHECKED	SJA	
DRAWN	BCS	REVISED		
REVIEWED	MAB	DATE	5/3/2019	DESIGN AGENCY
		STRUCTURE FILE NUMBER	3102076	BURGESS & NIPLE
				312 PLUM ST., CINCINNATI, OH
WATER LINE PROFILE				
BRIDGE NO. HAM-32-0127				
SR 125 (BEECHMONT AVE.) OVER LITTLE MIAMI RIVER				
HAM LMST BEECHMONT BRIDGE - PT 1				
PID No. 107295				
38/42				
120				
127				

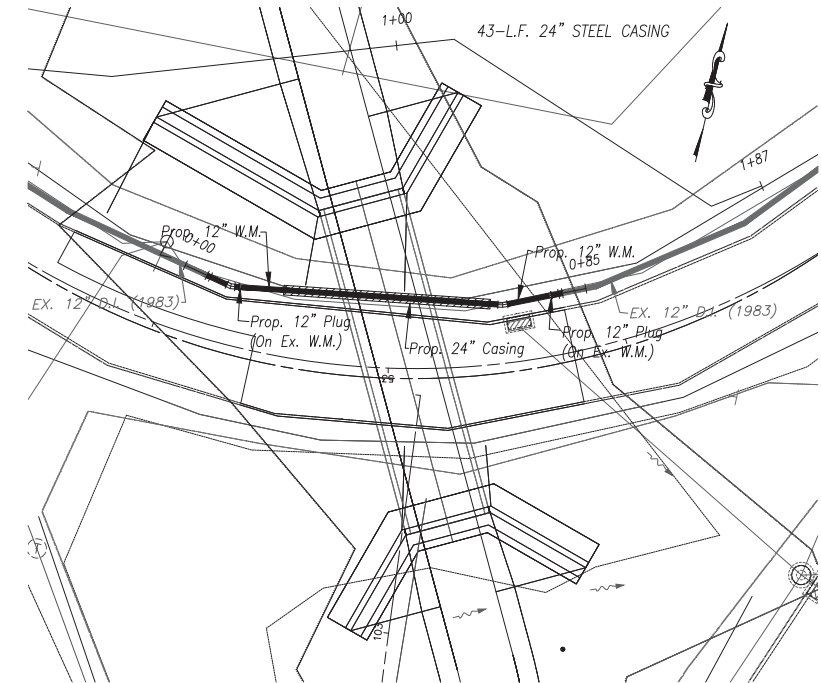
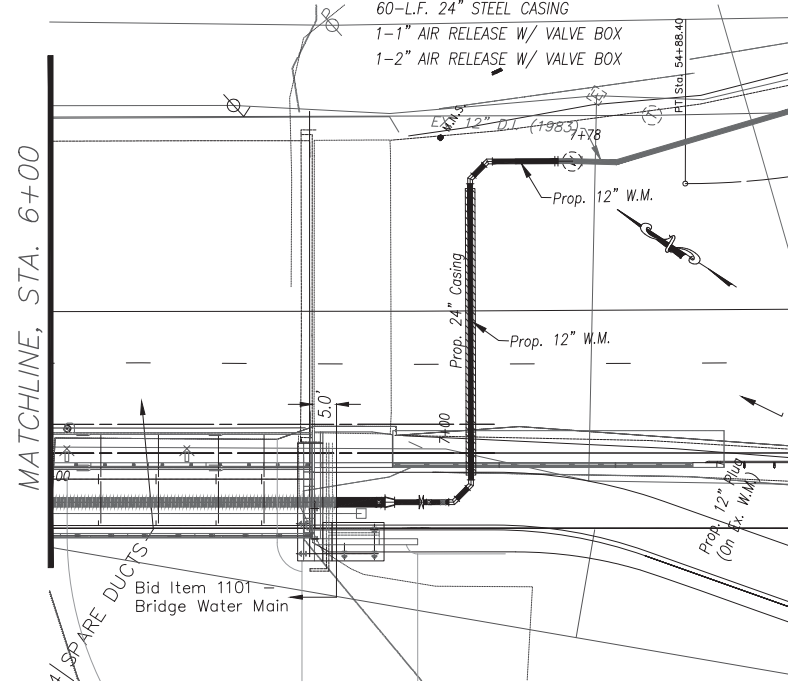
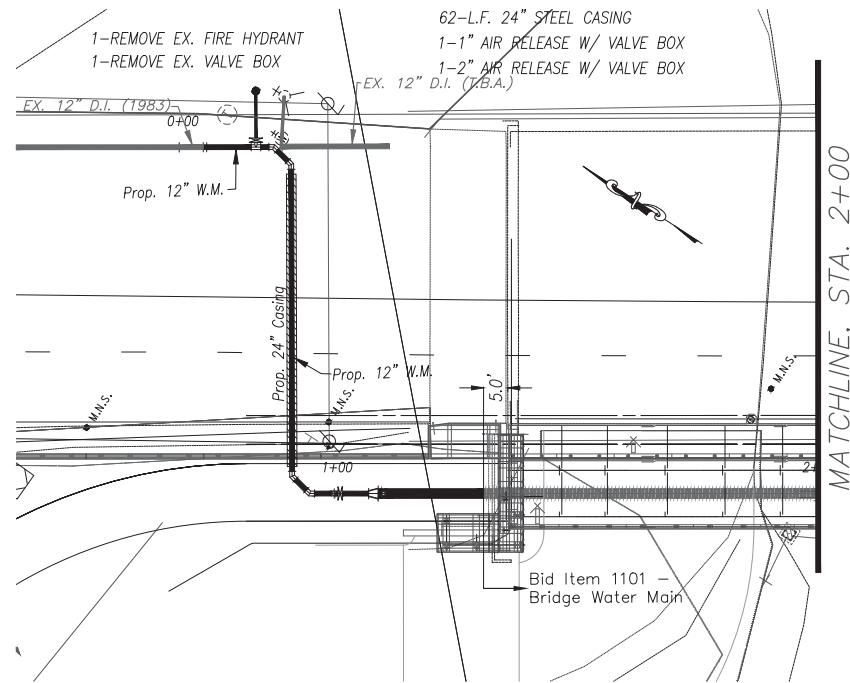
FIRE HYDRANT MATERIAL

- 1-12" X 6" TEE, 2 M.J. x FLG.
- 1-6" VALVE, FLG. X M.J.
- 1-6" FLANGE TYE RUBBER GASKET
- 1-6" PLUG, M.J. (TEMP.)
- 2-6" MEGALUG ASSEMBLY
- 2-12" MEGALUG ASSEMBLY
- 1-6" FIRE HYDRANT
- 1-6" FIRE HYDRANT EXTENSION, 6" LONG
- 1-VALVE BOX COMPLETE
- 1-VALVE BOX FROST PLUG

- 1-24" x 12" REDUCER, M.J. x P.E.
- 4-12" 45° BEND, 2 M.J.
- 1-12" SOLID SLEEVE, M.J.
- 1-12" CAP, M.J. (TEMP.)
- 1-12" VALVE, 2 M.J.
- 1-VALVE BOX COMPLETE
- 1-VALVE BOX FROST PLUG
- 14-12" MEGALUG ASSEMBLY
- 1-24" MEGALUG ASSEMBLY
- 3-12" FIELD LOK GASKET

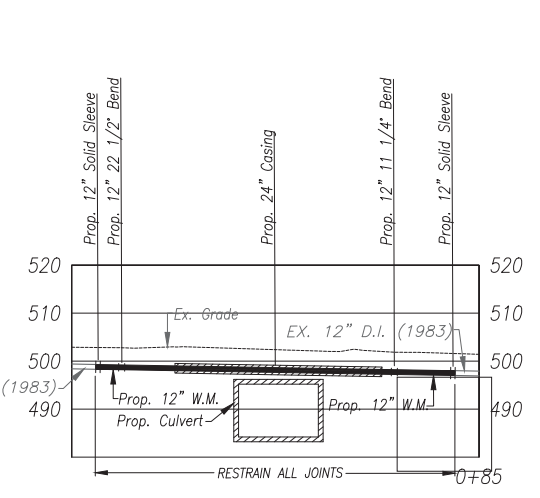
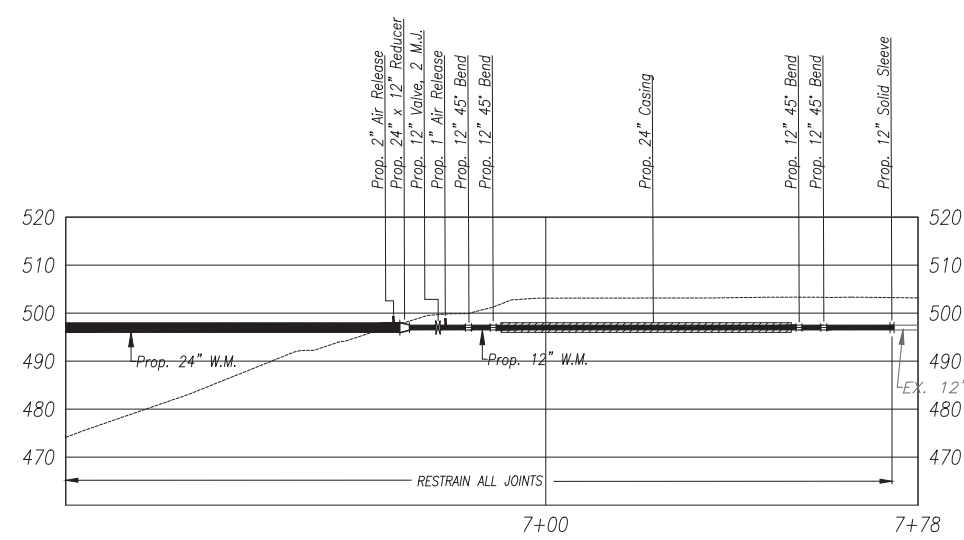
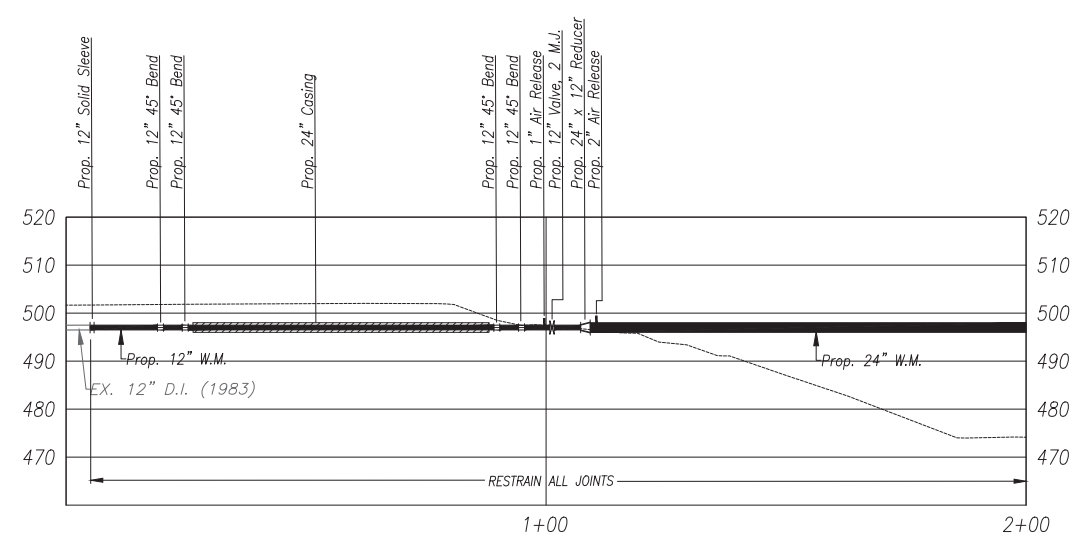
- 1-24" x 12" REDUCER, M.J. x P.E.
- 4-12" 45° BEND, 2 M.J.
- 1-12" SOLID SLEEVE, M.J.
- 1-12" CAP, M.J. (TEMP.)
- 1-12" VALVE, 2 M.J.
- 1-VALVE BOX COMPLETE
- 1-VALVE BOX FROST PLUG
- 14-12" MEGALUG ASSEMBLY
- 1-24" MEGALUG ASSEMBLY
- 3-12" FIELD LOK GASKET

- 1-12" 22 1/2° BEND, 2 M.J.
- 1-12" 11 1/4° BEND, 2 M.J.
- 2-12" SOLID SLEEVE, M.J.
- 2-12" PLUG, M.J. (TEMP.)
- 8-12" MEGALUG ASSEMBLY
- 2-12" FIELD LOK GASKET



NOTE: Delineation between bridge water main and other pay items starts 5' beyond the edge of each abutment. All items and appurtenances (water main, supports, hardware, wrapping, etc.) shall be included in the Bridge Water Main Bid Item.

NOTE:
Any outage on the water main greater than one day must be scheduled before May 31 or after August 31. No outages will be permitted in June, July, or August.



0	10	20	40
CALCULATED		CHECKED	
MJC	MS	HORIZONTAL & VERTICAL SCALE IN FEET	

**PLAN AND PROFILE
HAM-LMST-BEECHMONT**

4-3810 / WW003109

2
3
126
127

R5 ADDENDUM 5 - 12-14-2020

HAM-125-LMST-BEECHMONT PID#107295

THIS PROJECT IS LOCATED ON A DESIGNATED STATE AND NATIONAL SCENIC RIVER REGULATED UNDER THE FEDERAL WILD AND SCENIC RIVERS ACT, 16 U.S.C. 1271-1287: SECTIONS 7, 10(A), AND 12 AND 36 CFR PART 297. AGENCIES INVOLVED IN THE PERMITTING OF THE PROJECT SPECIFIC TO THE LITTLE MIAMI RIVER INCLUDE THE US DEPARTMENT OF THE INTERIOR, THE OHIO DEPARTMENT OF NATURAL RESOURCES, THE US ARMY CORPS OF ENGINEERS, THE US COAST GUARD AND THE OHIO ENVIRONMENTAL PROTECTION AGENCY. ALL OF THESE AGENCIES HAVE ASSIGNED CONDITIONS OF PERFORMANCE TO THIS PROJECT THAT ARE REFLECTED IN THE CONTRACT DOCUMENTS AND EXPECTED AND REQUIRED OF THE CONTRACTOR. FAILURE TO PERFORM BY THE CONTRACTOR ON ANY PART OF THE WORK RELATED TO THE LITTLE MIAMI RIVER MAY BE CAUSE FOR FINES, PENALTIES, STOPPAGE OF WORK, OR OTHER LEGAL REMEDIES AGAINST THE CONTRACTOR BY ANY OF THESE AGENCIES.

ASBESTOS ABATEMENT

AN ASBESTOS SURVEY FOR SFN 3102106 SCHEDULED FOR RENOVATION WORK WAS CONDUCTED BY A LICENSED ASBESTOS HAZARD EVALUATION SPECIALIST. THE ASBESTOS SURVEY DID NOT IDENTIFY THE PRESENCE OF ANY ASBESTOS CONTAINING MATERIALS.

ELECTRONIC SUBMISSION:

THE CONTRACTOR SHALL SUBMIT ELECTRONICALLY TO OEPA A COMPLETED NOTIFICATION OF DEMOLITION & RENOVATION FORM (NDRF) AND APPLICABLE FEES ALONG WITH THE ASBESTOS SURVEY REPORT. THE COMPLETED NDRF MUST BE SUBMITTED TO OEPA AT LEAST 10 DAYS PRIOR TO ANY DEMOLITION AND RENOVATION ACTIVITY. THE CONTRACTOR IS RESPONSIBLE FOR RETAINING AN ELECTRONIC COPY OF THE NDRF (IN PDF FORM) FOR SUBMISSION TO THE DISTRICT ENVIRONMENTAL STAFF AND A ONE HARD COPY TO THE PROJECT ENGINEER.

(GO TO THE OEPA EBUSINESS CENTER AND SUBMIT THE NDRF AND PAYMENT ALONG WITH THE ASBESTOS SURVEY REPORT)

HARD COPY SUBMISSION:

THE CONTRACTOR MAY ELECT TO SUBMIT A HARD COPY OF THE COMPLETED NDRF AND PAYMENT ALONG WITH THE ASBESTOS SURVEY REPORT TO THE FOLLOWING:

ASBESTOS PROGRAM OHIO EPA, DAPC P.O. BOX 1049 COLUMBUS, OHIO 43216-1049	OR	ASBESTOS PROGRAM OHIO EPA, DAPC 50 W. TOWN ST., SUITE 700 COLUMBUS, OHIO 43215
--	----	---

IF THE CONTRACTOR ELECTS TO SUBMIT A HARD COPY TO OEPA THEY ARE RESPONSIBLE FOR RETAINING A HARD COPY OF THE NDRF FOR SUBMISSION TO THE DISTRICT ENVIRONMENTAL STAFF AND A ONE HARD COPY TO THE PROJECT ENGINEER.

BASIS OF PAYMENT

THE FOLLOWING ESTIMATED QUANTITY HAS BEEN INCLUDED IN THE GENERAL SUMMARY FOR THE WORK NOTED ABOVE:

690E98400 ITEM SPECIAL - MISC.: WORK INVOLVING ASBESTOS CONTAINING MATERIALS - LUMP SUM

**ECOLOGICAL RESOURCES
BAT TREE CUTTING RESTRICTIONS**

THE PROJECT IS LOCATED WITHIN THE KNOWN HABITAT RANGES OF THE FEDERALLY LISTED AND PROTECTED INDIANA BAT AND NORTHERN LONG-EARED BAT. THE CONTRACTOR SHALL NOT REMOVE TREES UNDER THIS PROJECT FROM APRIL 1 THROUGH SEPTEMBER 30. ALL NECESSARY TREE REMOVAL SHALL OCCUR FROM OCTOBER 1 THROUGH MARCH 31. THE CONTRACTOR SHALL DEMARCATÉ CLEARING LIMITS IN THE FIELD TO AVOID ANY UNAUTHORIZED CLEARING. THIS REQUIREMENT IS NECESSARY TO AVOID AND MINIMIZE IMPACTS TO THESE SPECIES AS REQUIRED BY THE ENDANGERED SPECIES ACT. FOR THE PURPOSES OF THIS NOTE, A TREE IS DEFINED AS A LIVE, DYING, OR DEAD WOODY PLANT, WITH A TRUNK THREE INCHES OR GREATER IN DIAMETER AT A HEIGHT OF 4.5 FEET ABOVE THE GROUND SURFACE, AND WITH A MINIMUM HEIGHT OF 13 FEET. THIS PROJECT REQUIRES CUTTING, CLEARING, MULCHING AND MILLING IN PLACE WO, OF ALL VEGETATION WITHIN THE DESIGNATED WORK LIMITS, ONLY AFTER THE WORK LIMITS ARE CLEARLY DELINEATED IN THE FIELD AND CONFIRMED BY ODOT AND THE ENGINEER AND PROJECT ENVIRONMENTAL CONSULTANT, TO INCLUDE NOT ONLY BAT TREES BUT ALL OTHER TREES AND WOODY VEGETATION. MARKETABLE SAW LOGS, LARGE TREE SECTIONS OR STUMPS MAY BE STOCKPILED AND TRUCKED OFF SITE FOR SALE OR DISPOSAL, BUT ALL MUST BE REMOVED WITHIN 14 DAYS OF CUTTING AND WITHIN THE OCOTBERI-MARCH 31 WINDOW. MILLED AND MULCHED MATERIALS MAY BE LEFT IN PLACE, AS PERMITTED BELOW, UNTIL SUCH TIME AS REMOVAL IS REQUIRED FOR EARTHWORK ACTIVITIES. NO MATERIAL CUT, CLEARED, MULCHED OR MILLED MAY BE STORED OR STOCKPILED WITHIN THE LIMITS OF THE 100-YEAR FLOOD PLAIN. NO BURNING OF CLEARED MATERIALS IS PERMITTED.

MIGRATORY BIRD PROTECTION (SWALLOWS):

SWALLOW NESTS, A NATIVE BIRD PROTECTED UNDER THE MIGRATORY BIRD TREATY ACT (MBTA), WERE IDENTIFIED UPON THE 3102076 BRIDGE DURING THE ECOLOGICAL SURVEY FOR THE PROJECT. THE MBTA PROHIBITS THE INTENTIONAL KILLING OR CAPTURE OF NATIVE BIRDS PROTECTED UNDER THE ACT. IF CONSTRUCTION ACTIVITIES ARE TO OCCUR BETWEEN THE DATES OF MAY 1 AND AUGUST 31 ON THIS STRUCTURE, THEN PRIOR TO THE START OF CONSTRUCTION THE CONTRACTOR MUST INSPECT THE STRUCTURE FOR EVIDENCE OF AN ACTIVE BIRD NEST CONTAINING AN EGG OR CHICK. THE CONTRACTOR MUST PROVIDE WRITTEN CONFIRMATION OF THE INSPECTION, INCLUDING A STATEMENT WHETHER AN ACTIVE NEST WAS FOUND, TO THE ENGINEER. IF AN ACTIVE NEST CONTAINING AN EGG OR CHICK IS ENCOUNTERED, IMPACTS TO THE NEST MUST BE AVOIDED UNTIL ALL DEVELOPING BIRDS ARE ABLE TO INDEPENDENTLY FLY FROM THE NEST. IF NO NESTS ARE ENCOUNTERED DURING THE INSPECTION, OR IF ONLY INACTIVE NESTS THAT DO NOT CONTAIN AN EGG OR CHICK ARE ENCOUNTERED, CONSTRUCTION ACTIVITIES CAN PROCEED. INACTIVE NESTS CAN BE REMOVED AND DESTROYED. IF AN ACTIVE NEST CONTAINING AN EGG OR CHICK CANNOT BE AVOIDED, THE CONTRACTOR MUST OBTAIN A DEPREDATION PERMIT FROM THE USFWS PRIOR TO DESTROYING ANY ACTIVE NEST.

INFORMATION ON OBTAINING A DEPREDATION PERMIT FROM THE USFWS CAN BE OBTAINED BY CONTACTING THE REGION 3 MIGRATORY BIRD REGIONAL PERMIT OFFICE AT 5600 AMERICAN BLVD. WEST, SUITE 990, BLOOMINGTON, MN 55437-1458, PHONE NUMBER 612-713-5436, EMAIL PERMITSR3MB@FWS.GOV. PROJECTS PERFORMING CONSTRUCTION ACTIVITIES BETWEEN THE DATES OF SEPTEMBER 1 AND APRIL 30 DO NOT REQUIRE AN INSPECTION FOR MIGRATORY BIRDS OR AVOIDANCE MEASURES.

RUNNING BUFFALO CLOVER

THIS PROJECT CONTAINS SUITABLE HABITAT FOR THE FEDERALLY ENDANGERED RUNNING BUFFALO CLOVER (TRIFOLIUM STOLONIFERUM), HOWEVER, A SURVEY FOR THE SPECIES DID NOT FIND ANY INDIVIDUAL WITHIN OR ADJACENT TO THE PROJECT AREA. WHILE NO ADDITIONAL SURVEYS FOR THIS SPECIES ARE REQUIRED DURING CONSTRUCTION, IF RUNNING BUFFALO CLOVER IS SUBSEQUENTLY IDENTIFIED WITHIN THE CONSTRUCTION LIMITS DURING CONSTRUCTION OPERATIONS, ALL CONSTRUCTION OPERATIONS WILL TEMPORARILY CEASE, AND THE PROJECT ENGINEER WILL NOTIFY THE DISTRICT ENVIRONMENTAL COORDINATOR TO RE-INITIATE CONSULTATION FOR THE SPECIES.

SOLE SOURCE AQUIFER

GENERAL PROTECTION AND REPORTING: THIS PROJECT IS LOCATED WITHIN A DESIGNATED AND REGULATED SOLE SOURCE AQUIFER. IN ORDER TO MINIMIZE THE POTENTIAL FOR CONTAMINATION, THE CONTRACTOR SHALL UTILIZE PROPER CONTAINMENT AND DIKING IN REFUELING AREAS. FUELS, TOXIC/HAZARDOUS MATERIALS, AND CHEMICALS SHALL NOT BE STORED NEAR DRAINAGE WAYS, DITCHES, OR STREAMS. A SPILL KIT IS TO BE MAINTAINED ON-SITE THROUGHOUT CONSTRUCTION ACTIVITIES. THE CONTRACTOR SHALL IMMEDIATELY TAKE STEPS TO MITIGATE ANY EVENT, SUCH AS A SPILL OF FUELS, OILS, OR CHEMICALS, THAT COULD THREATEN TO CONTAMINATE THE DRINKING WATER SUPPLY. ANY SUCH SPILL OR EVENT SHALL BE REPORTED IMMEDIATELY TO THE CINCINNATI WATER WORKS 513-591-7700. IF THE SPILL IS A REPORTABLE AMOUNT (PER OHIO EPA'S RELEASE REPORTING REQUIREMENTS), THE CONTRACTOR SHALL CONTACT CINCINNATI FIRE DEPARTMENT 911 AND THE OHIO EPA'S SPILLS HOTLINE 1-800-282-9378 FOR CLEAN-UP OF THE SPILL.

LEAKING EQUIPMENT: NO LEAKING EQUIPMENT (OILS, LUBRICANTS, FLUIDS, FUELS, COOLANTS, OTHER) SHALL BE PERMITTED ANYWHERE WITHIN THE WORK LIMITS OF THE PROJECT. THIS INCLUDES, AS A HIGH PRIORITY, ANY EQUIPMENT ON OR NEAR THE TEMPORARY WORK PADS EXTENDING INTO THE LITTLE MIAMI RIVER. HOWEVER, THIS ALSO INCLUDES ANY EQUIPMENT, ANYWHERE, ON THE PROJECT SITE. REGULAR INSPECTIONS OF EQUIPMENT SHALL BE MADE, AND ANY LEAKING EQUIPMENT SHALL BE IMMEDIATELY REMOVED FROM THE ENTIRETY OF THE SITE. ALL CRANES AND RELATED EQUIPMENT TO BE PLACED ON WORK PADS SHALL BE INSPECTED UPON DELIVERY TO THE SITE BEFORE MOVING ON THE WORK PADS.

SPECIAL MATERIALS: SPECIAL MATERIALS INCLUDING CONCRETE FORM OILS SHALL BE MANAGED, APPLIED, AND CONTAINED SO AS NOT TO CREATE A RISK TO THE AQUIFER OR RELATED LITTLE MIAMI RIVER SURFACE WATER RESOURCE.

STORING/ STAGING RESTRICTIONS: THE CONTRACTOR SHALL NOT STORE OR STAGE CONSTRUCTION EQUIPMENT OR MATERIALS WITHIN THE BOUNDARIES OF THE PUBLIC LANDS AND FACILITIES ALONG THE LITTLE MIAMI RIVER (INCLUDING THE RIVER ITSELF, AS WELL AS THE ASSOCIATED MULTI-USE TRAIL AND PASSIVE RECREATION LANDS AND GREENSPACE), OUTSIDE OF PROPOSED CONSTRUCTION LIMITS, EXCEPT FOR AREA(S) APPROVED BY THE OFFICIAL WITH JURISDICTION (GREAT PARKS OF HAMILTON COUNTY) SPECIFICALLY FOR STORAGE AND STAGING OF EQUIPMENT PER CMS 107.10.

ITEM 606 - ANCHOR ASSEMBLY, MGS, TYPE E

THIS ITEM SHALL CONSIST OF FURNISHING AND INSTALLING ANY OF THE GUARDRAIL END TERMINALS FOR TYPE MGS GUARDRAIL AS LISTED ON ROADWAY ENGINEERING'S WEB PAGE UNDER ROADSIDE SAFETY DEVICES FOR APPROVED GUARDRAIL END TREATMENTS. INSTALLATION SHALL BE AT THE LOCATIONS SPECIFIED IN THE PLANS, IN ACCORDANCE WITH THE MANUFACTURER'S SPECIFICATIONS.

THE FACE OF THE TYPE E IMPACT HEAD SHALL BE COVERED WITH A SHEET OF TYPE G REFLECTIVE SHEETING, PER CMS 730.19.

REFER TO THE MANUFACTURER'S INSTRUCTIONS REGARDING THE INSTALLATION OF, AND THE GRADING AROUND THE FOUNDATION TUBES AND GROUND STRUT. THE TOP OF ANY FOUNDATION TUBE SHOULD BE LESS THAN 4 INCHES ABOVE THE GROUND. THE PLACEMENT OF THE FOUNDATION TUBES SHOULD BE AN APPROPRIATE DEPTH BELOW THE LEVEL LINE IN ORDER TO MAINTAIN THE FINISHED GUARDRAIL HEIGHT OF 31 INCHES FROM THE EDGE OF THE SHOULDER.

ON-SITE GRADING IS REQUIRED IF THE TOP OF THE FOUNDATION TUBES OR TOP OF THE GROUND STRUT DOES PROJECT MORE THAN 4 INCHES ABOVE THE GROUND LINE.

PAYMENT FOR THE ABOVE WORK SHALL BE MADE AT THE UNIT PRICE BID FOR ITEM 606, ANCHOR ASSEMBLY, MGS TYPE E, EACH, AND SHALL INCLUDE ALL LABOR, TOOLS, EQUIPMENT AND MATERIALS NECESSARY TO CONSTRUCT A COMPLETE AND FUNCTIONAL ANCHOR ASSEMBLY SYSTEM, INCLUDING ALL RELATED TRANSITIONS, REFLECTIVE SHEETING, HARDWARE, GRADING, EMBANKMENT AND EXCAVATION NOT SEPARATELY SPECIFIED, AS REQUIRED BY THE MANUFACTURER.

CONSTRUCTION LIMITS

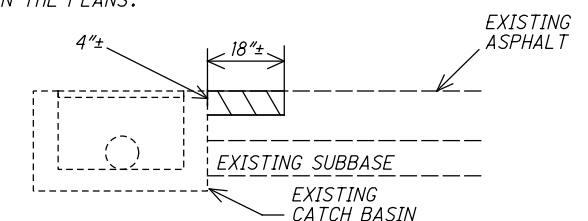
CONSTRUCTION LIMITS FOR THE PROPOSED WORK SHOWN IN THE PLANS SHALL MATCH THE EXISTING RIGHT OF WAY LIMITS FOR THE BRIDGES AND ADJACENT ROADS.

ITEM 202 - ANCHOR ASSEMBLY REMOVED, TYPE A, AS PER PLAN

WHERE DESIGNATED, EXISTING ANCHOR ASSEMBLIES INCLUDING ALL POST AND HARDWARE SHALL BE REMOVED. THIS ITEM SHALL ALSO INCLUDE THE REMOVAL OF THE ENTIRE CONCRETE ANCHOR AND CONCRETE ENCASEMENT. ALL HOLES LEFT AFTER REMOVAL OF ASSEMBLIES AND POSTS SHALL BE FILLED WITH GRANULAR MATERIAL AS DIRECTED BY THE ENGINEER. PAYMENT SHALL INCLUDE ALL NECESSARY LABOR AND EQUIPMENT REQUIRED TO PERFORM THE INDICATED ABOVE.

ITEM 251 - PARTIAL DEPTH PAVEMENT REPAIR

AN ESTIMATED QUANTITY OF 0.5 SY OF ITEM 251 PAVEMENT REPAIR HAS BEEN CARRIED TO THE GENERAL SUMMARY TO BE USED AS DIRECTED BY THE ENGINEER. REPAIR A 1'-0" WIDE AREA ADJACENT TO THE CATCH BASIN ON RAMP 'J' AS SHOWN IN THE PLANS.



EXISTING DETERIORATED ASPHALT SHALL BE REMOVED TO A DEPTH OF 4", OR AS DIRECTED BY THE ENGINEER. IT IS INTENDED TO RESTORE PAVEMENT SURROUNDING THE CATCH BASIN GRATE. APPLY TACK COAT AND RECONSTRUCT USING 441 SURFACE COURSE IN 2" MAX LIFTS.

I:\ProjectData\HAM\107694_HAM-SR32-1.44R\Design\Roadway\Sheets\107694_GN002.dgn Sheet 12/11/2020 11:38:52 AM choward4

CALCULATED
CAH
CHECKED
XXX

GENERAL NOTES

HAM-SR32-1.44R
PART 2

3
24

I:\ProJec+Data\HAM\107694_HAM-SR32-1.44R\Design\Roadway\Sheets\107694_CG001.dgn Sheet 12/11/2020 12:52:26 PM choward4

SHEET NUM.										PART.	ITEM	ITEM	GRAND	UNIT	DESCRIPTION	SEE SHEET NO.
2	3	4	5	6	10	15	17			02/NHS/B R		EXT	TOTAL			
ROADWAY																
LUMP										LUMP	201	11001	LS		CLEARING AND GRUBBING, AS PER PLAN	2
										56	202	32000	56	FT	CURB REMOVED	17
										108	202	32800	108	SY	CONCRETE SLOPE PROTECTION REMOVED	17
					906					906	202	38000	906	FT	GUARDRAIL REMOVED	
					2					2	202	42001	2	EACH	ANCHOR ASSEMBLY REMOVED, TYPE A, AS PER PLAN	3
					4					4	202	47000	4	EACH	BRIDGE TERMINAL ASSEMBLY REMOVED	
0.13										0.13	209	15050	0.13	MILE	RESHAPING UNDER GUARDRAIL	
					587.5					587.5	606	15100	587.5	FT	GUARDRAIL, TYPE MGS WITH LONG POSTS	
					3					3	606	26150	3	EACH	ANCHOR ASSEMBLY, MGS TYPE E, (MASH OR NCHRP 350)	
					9					9	606	35002	9	EACH	MGS BRIDGE TERMINAL ASSEMBLY, TYPE 1	3
										106	622	10160	106	FT	CONCRETE BARRIER, SINGLE SLOPE, TYPE D	
										4	622	25000	4	EACH	CONCRETE BARRIER END SECTION, TYPE D	
EROSION CONTROL																
298										298	659	00540	298	SY	SEEDING AND MULCHING, CLASS 3C	
15										15	659	14000	15	SY	REPAIR SEEDING AND MULCHING	
0.04										0.04	659	20000	0.04	TON	COMMERCIAL FERTILIZER	
0.06										0.06	659	31000	0.06	ACRE	LIME	
1.6										1.6	659	35000	1.6	MGAL	WATER	
										2,000	832	30000	2,000	EACH	EROSION CONTROL	
DRAINAGE																
										7	611	04600	7	FT	12" CONDUIT, TYPE C	17
										1	611	98470	1	EACH	CATCH BASIN, NO. 2-2B	17
PAVEMENT																
0.50										0.50	251	01000	0.50	SY	PARTIAL DEPTH PAVEMENT REPAIR (441)	
					64					64	409	30001	64	FT	SAWING AND SEALING ASPHALT CONCRETE PAVEMENT JOINTS, AS PER PLAN	17
LIGHTING																
										LUMP	625	98200	LS		LIGHTING, MISC.: REPAIR DAMAGED LIGHTING SYSTEM	18
TRAFFIC CONTROL																
					13					13	621	00300	13	EACH	RPM REFLECTOR	10
					13					13	621	90000	13	EACH	RPM, MISC.: RPM REFLECTOR REMOVED	10
					8					8	626	00102	8	EACH	BARRIER REFLECTOR, TYPE 1, UNI-DIRECTIONAL	
					15					15	626	00110	15	EACH	BARRIER REFLECTOR, TYPE 2, UNI-DIRECTIONAL	
					0.25					0.25	642	00100	0.25	MILE	EDGE LINE, 4", TYPE 1	
					0.25					0.25	642	00200	0.25	MILE	LANE LINE, 4", TYPE 1	
					0.25					0.25	642	00300	0.25	MILE	CENTER LINE, TYPE 1	
STRUCTURE REPAIR (HAM-32-1.44R)																
																15
MAINTENANCE OF TRAFFIC																
		120								120	614	11111	120	hour	LAW ENFORCEMENT OFFICER WITH PATROL CAR FOR ASSISTANCE, AS PER PLAN	3
		LUMP	2							2	614	12384	2	EACH	WORK ZONE IMPACT ATTENUATOR, 24" WIDE HAZARDS, (BIDIRECTIONAL)	
			30							LUMP	614	12420	LS		DETOUR SIGNING	4
			30							30	614	13310	30	EACH	BARRIER REFLECTOR, TYPE 1, UNI-DIRECTIONAL	
				6						30	614	13360	30	EACH	OBJECT MARKER, TWO WAY	
										6	614	18601	6	SNMT	PORTABLE CHANGEABLE MESSAGE SIGN, AS PER PLAN	6
			0.15							0.15	614	20200	0.15	MILE	WORK ZONE LANE LINE, CLASS I, 4", 740.06, TYPE I	
			0.15							0.15	614	21200	0.15	MILE	WORK ZONE CENTER LINE, CLASS I, 740.06, TYPE I	
			0.28							0.28	614	22200	0.28	MILE	WORK ZONE EDGE LINE, CLASS I, 4", 740.06, TYPE I	
			1,320							1,320	622	41100	1,320	FT	PORTABLE BARRIER, UNANCHORED	
INCIDENTALS																
		LUMP								LUMP	614	11000	LS		MAINTAINING TRAFFIC	
LUMP										LUMP	623	10001	LS		CONSTRUCTION LAYOUT STAKES AND SURVEYING, AS PER PLAN	2
										LUMP	624	10000	LS		MOBILIZATION	

CALCULATED CAH CHECKED XXX
GENERAL SUMMARY
HAM-SR32-1.44R PART 2
 9
 24