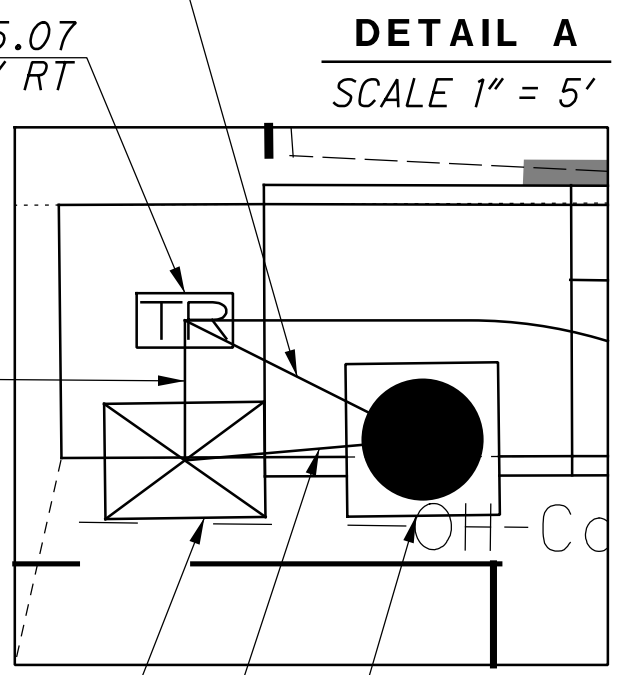
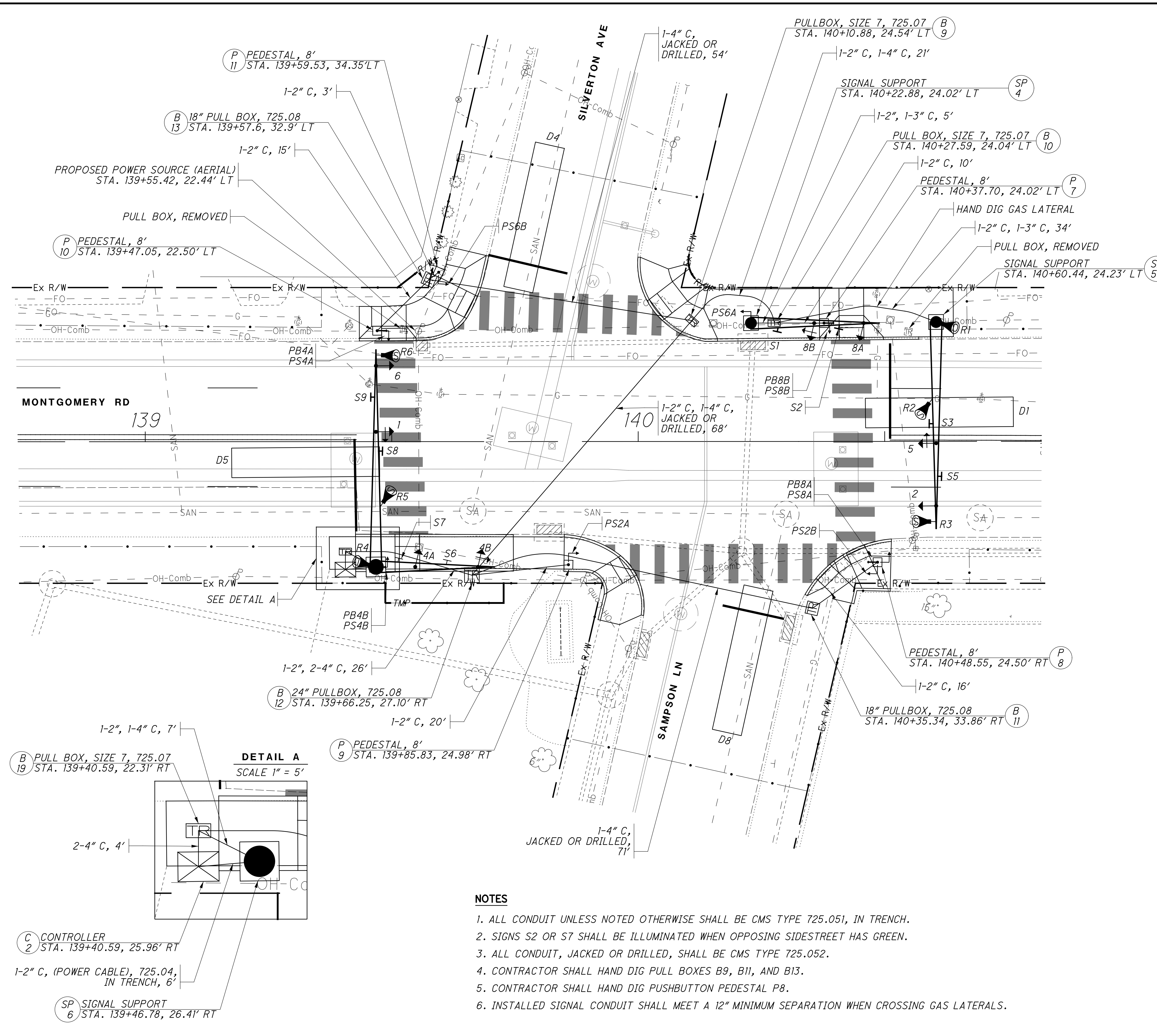
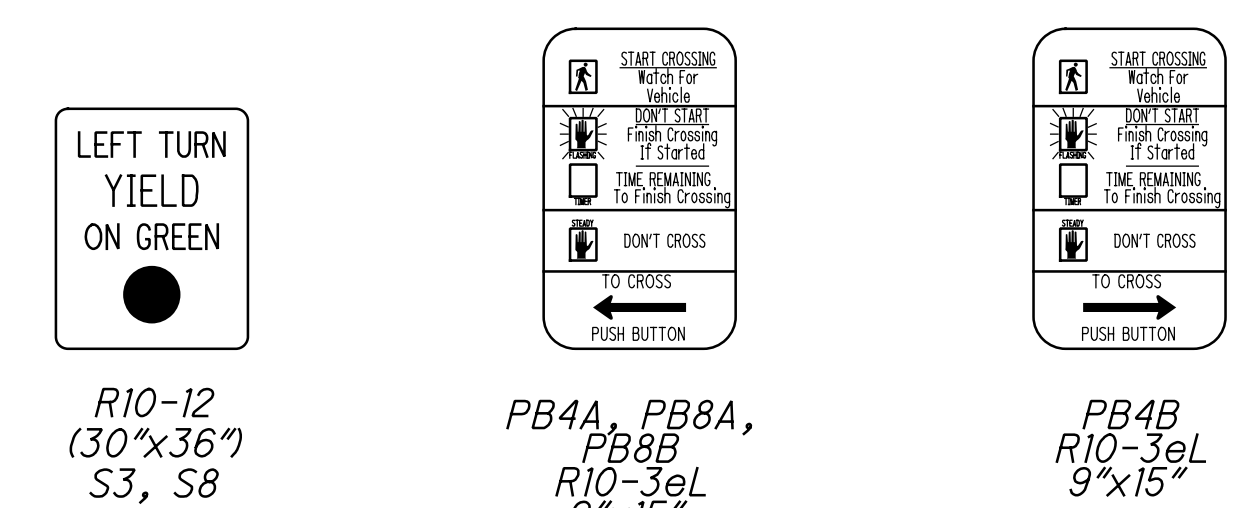
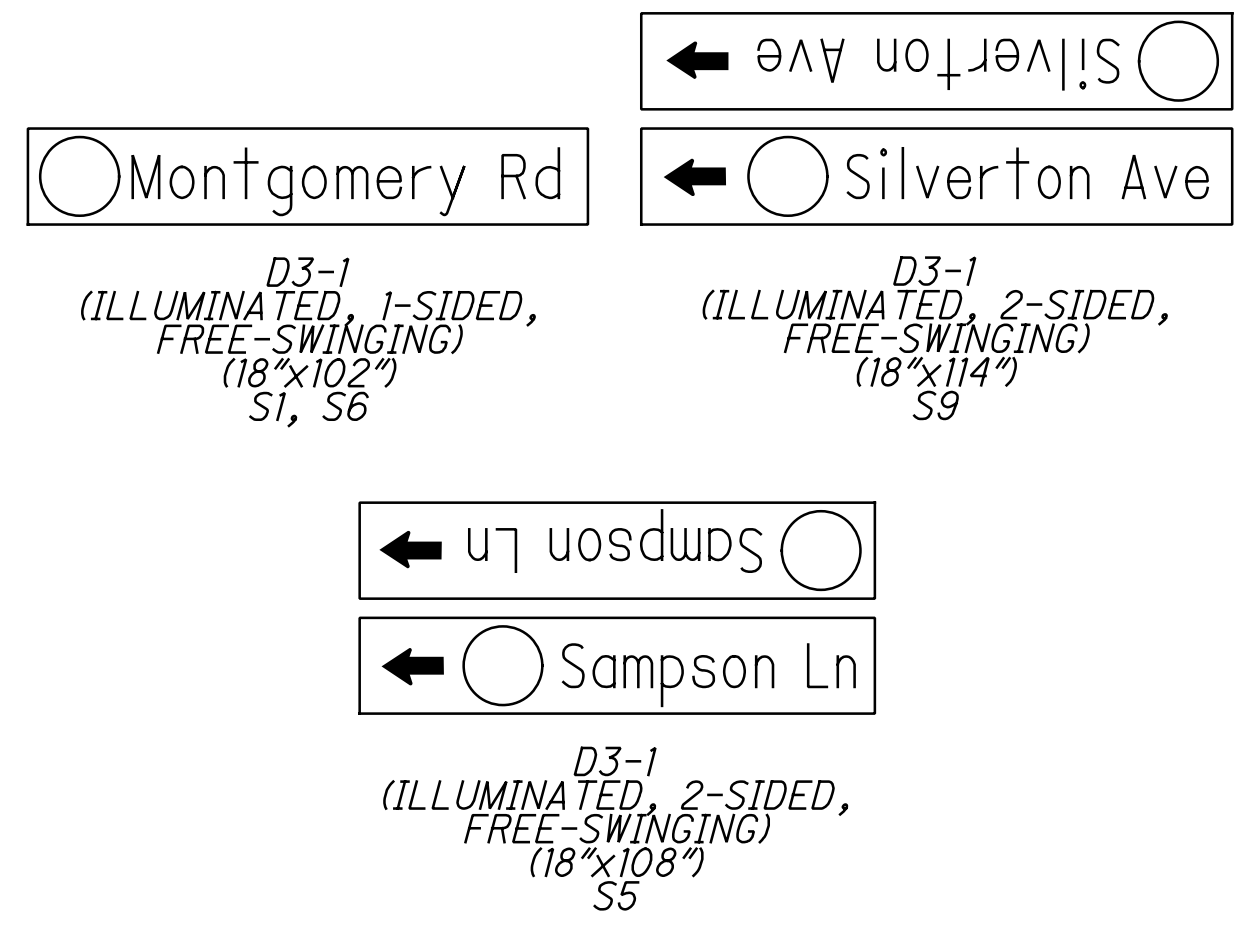
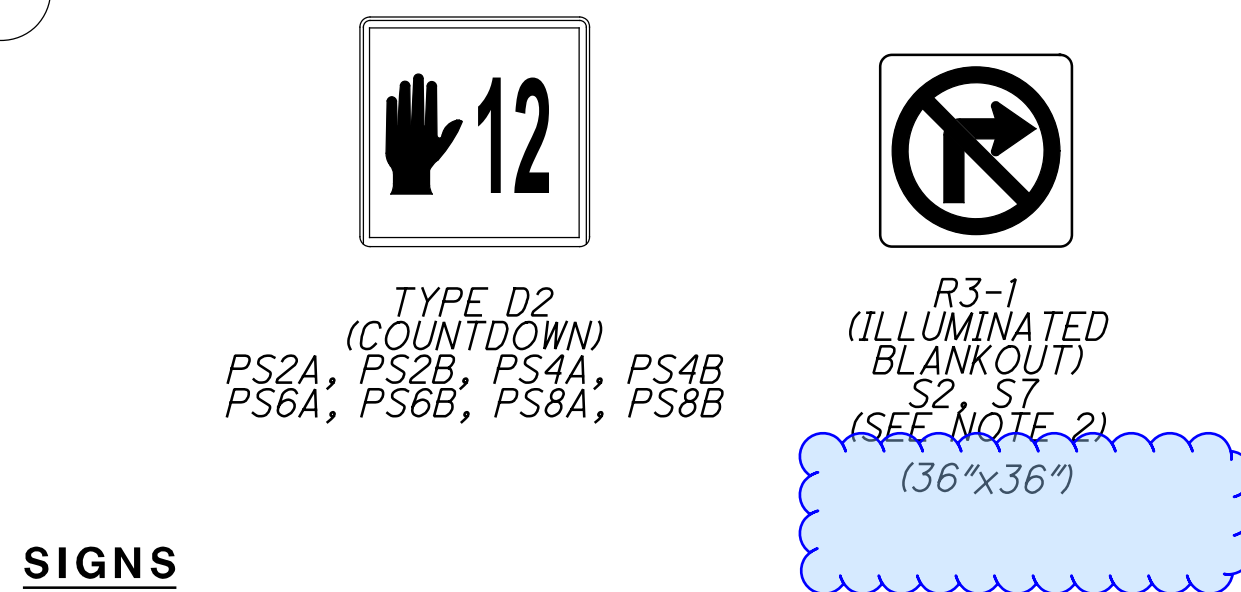
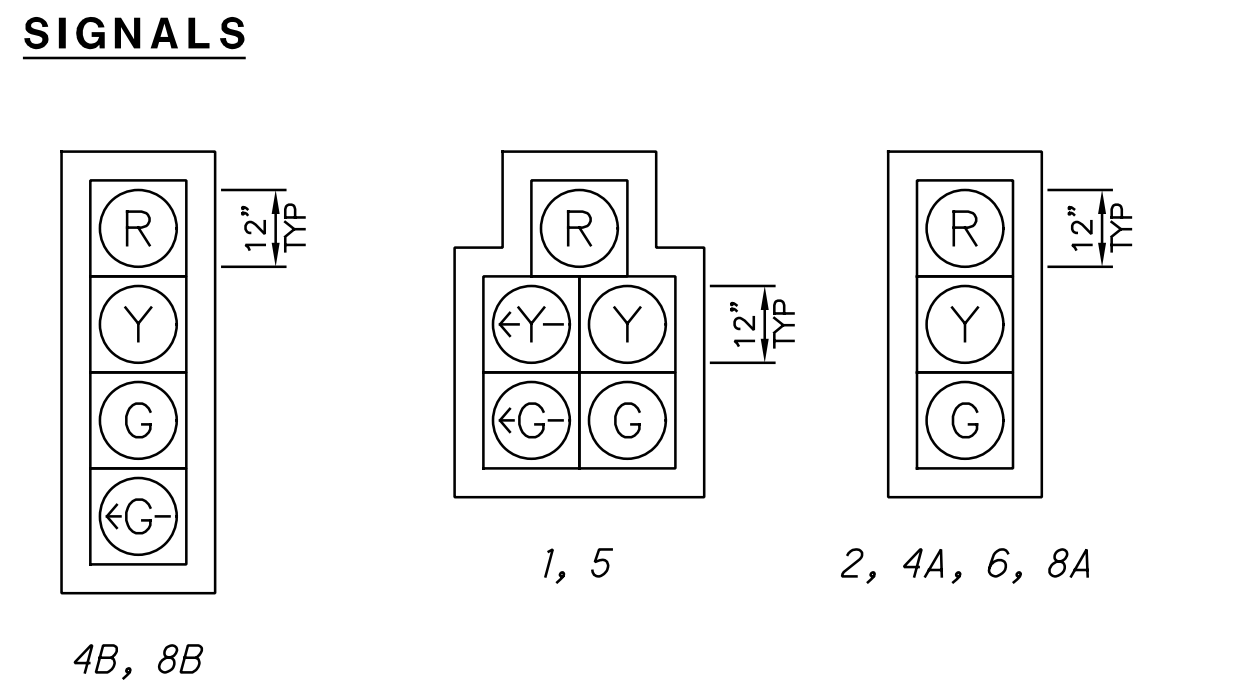


H:\Engineering\2009-2010\Projects\090041\074 - Montgomery Road Signals\07301\Design\Signals\Sheets\07301_CP002.dgn Sheet 3/17/2022 4:54:05 PM thunt



- NOTES**
1. ALL CONDUIT UNLESS NOTED OTHERWISE SHALL BE CMS TYPE 725.051, IN TRENCH.
 2. SIGNS S2 OR S7 SHALL BE ILLUMINATED WHEN OPPOSING SIDESTREET HAS GREEN.
 3. ALL CONDUIT, JACKED OR DRILLED, SHALL BE CMS TYPE 725.052.
 4. CONTRACTOR SHALL HAND DIG PULL BOXES B9, B11, AND B13.
 5. CONTRACTOR SHALL HAND DIG PUSHBUTTON PEDESTAL P8.
 6. INSTALLED SIGNAL CONDUIT SHALL MEET A 12\"/>



- LEGEND**
- ⤴ PEDESTRIAN SIGNAL HEAD
 - ⤵ PEDESTRIAN PUSHBUTTON
 - ☒ POLE MOUNTED CONTROLLER CABINET
 - ▣ PROPOSED PULL BOX
 - ⬤ PROPOSED SIGNAL SUPPORT
 - ▣ PROPOSED PEDESTAL
 - ➔ 3-SECTION SIGNAL HEAD
 - ➔➔➔ 4-SECTION OR 5-SECTION SIGNAL HEAD
 - Ⓢ STOP-BAR RADAR DETECTOR
 - Ⓢ ADVANCED RADAR DETECTOR