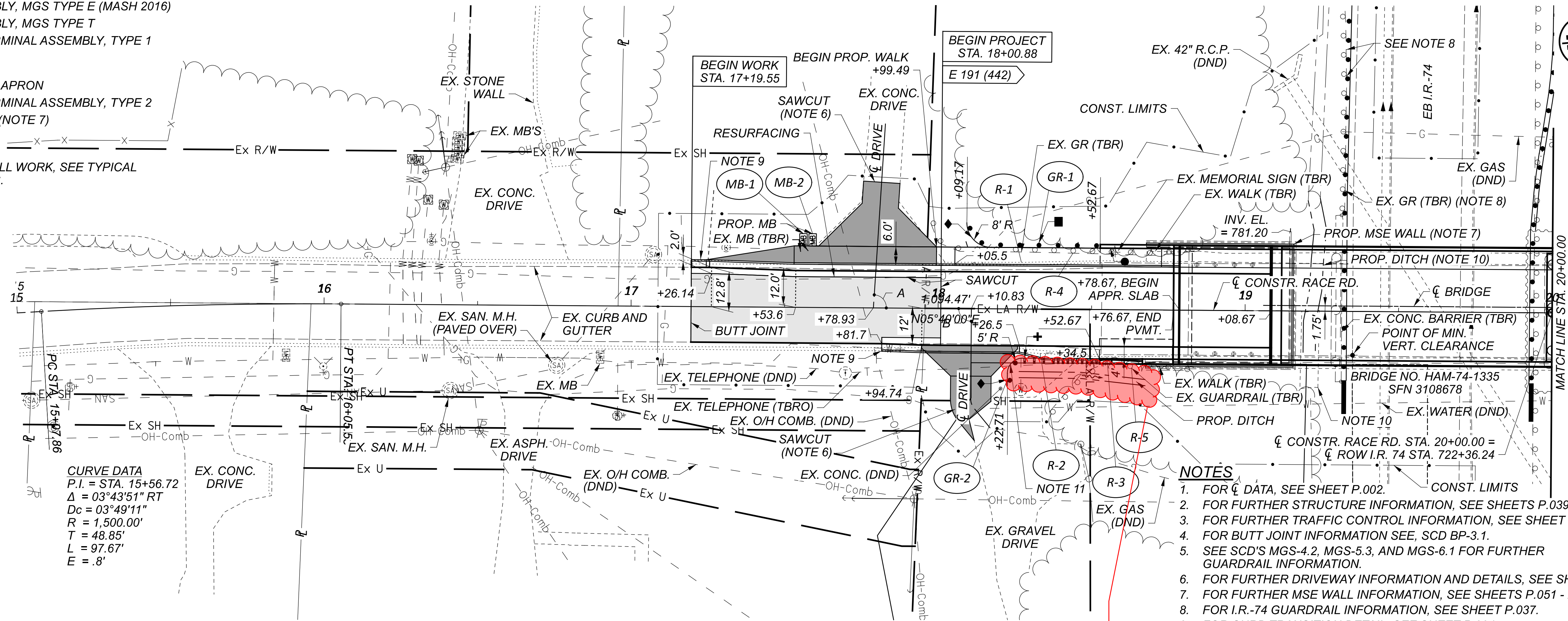


LEGEND

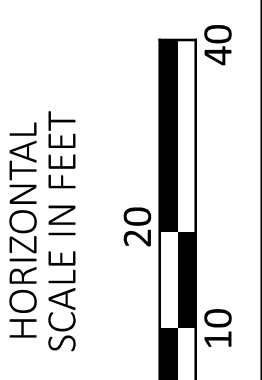
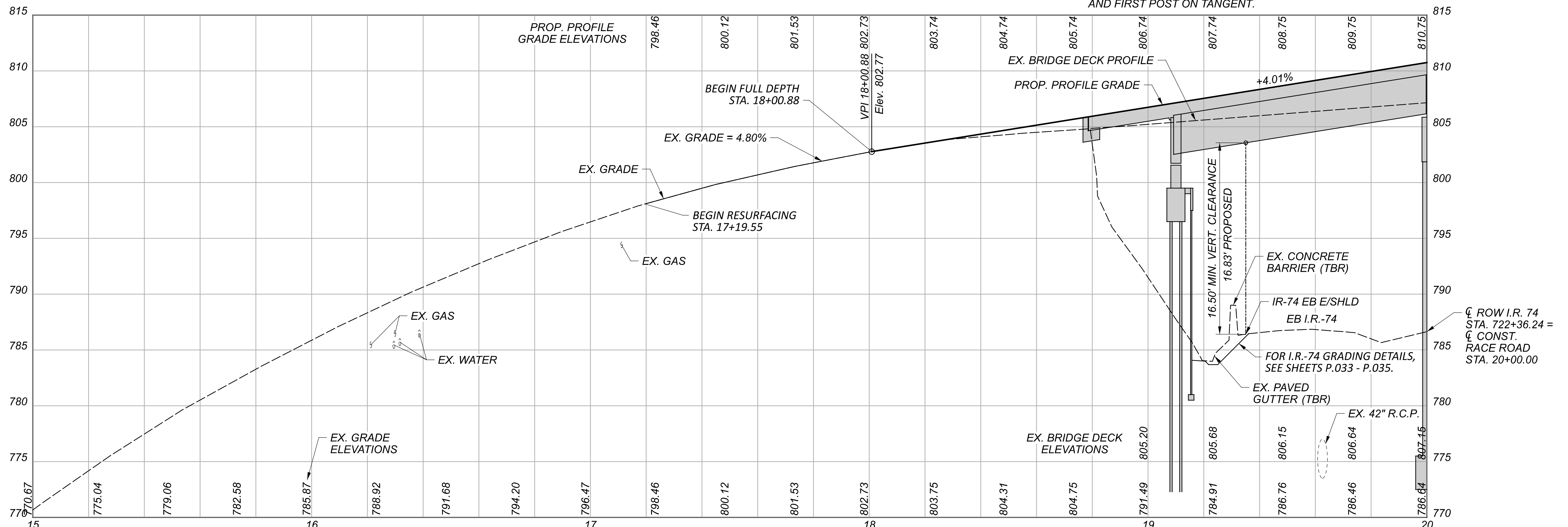
- - GUARDRAIL, TYPE MGS
- ▲ - ANCHOR ASSEMBLY, MGS TYPE E (MASH 2016)
- ◆ - ANCHOR ASSEMBLY, MGS TYPE T
- ⊕ - MGS BRIDGE TERMINAL ASSEMBLY, TYPE 1
- ⊗ - TREE (TBR)
- ▭ - CONC. DRIVEWAY APRON
- - MGS BRIDGE TERMINAL ASSEMBLY, TYPE 2
- ## - PROP. MSE WALL (NOTE 7)
- A = 86° 40' 29.3" (86.67°)
- B = 90° 00' 00"
- ▭ - LIMITS OF MILL/FILL WORK, SEE TYPICAL SECTION SHEETS.



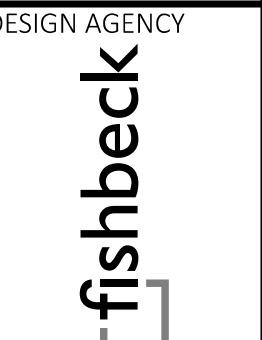
CURVE DATA
 P.I. = STA. 15+56.72
 $\Delta = 03^\circ 43' 51''$ RT
 $D_c = 03^\circ 49' 11''$
 $R = 1,500.00'$
 $T = 48.85'$
 $L = 97.67'$
 $E = .8'$

NOTES

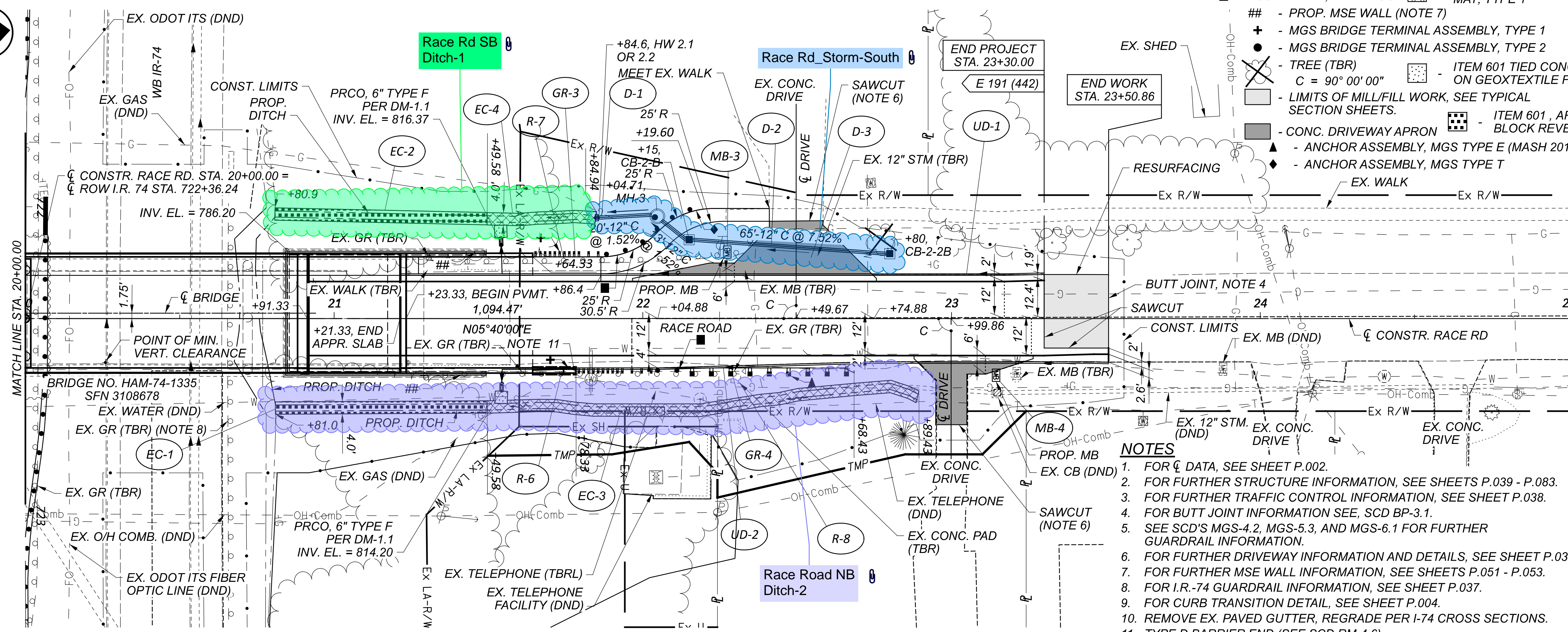
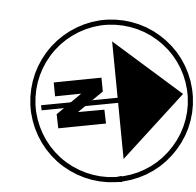
1. FOR ϕ DATA, SEE SHEET P.002.
2. FOR FURTHER STRUCTURE INFORMATION, SEE SHEETS P.039 - P.083.
3. FOR FURTHER TRAFFIC CONTROL INFORMATION, SEE SHEET P.038.
4. FOR BUTT JOINT INFORMATION SEE, SCD BP-3.1.
5. SEE SCD'S MGS-4.2, MGS-5.3, AND MGS-6.1 FOR FURTHER GUARDRAIL INFORMATION.
6. FOR FURTHER DRIVEWAY INFORMATION AND DETAILS, SEE SHEET P.036.
7. FOR FURTHER MSE WALL INFORMATION, SEE SHEETS P.051 - P.053.
8. FOR I.R.-74 GUARDRAIL INFORMATION, SEE SHEET P.037.
9. FOR CURB TRANSITION DETAIL, SEE SHEET P.004.
10. REMOVE EX. PAVED GUTTER, REGRADE PER I-74 CROSS SECTIONS.
11. TYPE T ANCHOR ASSEMBLY BRACE ROD SHALL BE BETWEEN LAST POST ON RADIUS AND FIRST POST ON TANGENT.



PLAN AND PROFILE
 BEGIN PROJECT TO STA. 20+00

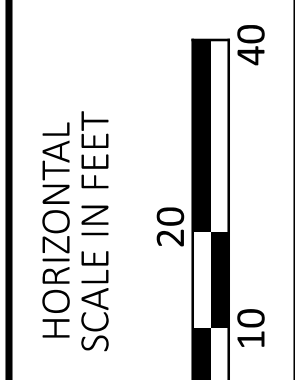


DESIGN AGENCY	fishbeck
DESIGNER	JAL
REVIEWER	JAH 05/01/24
PROJECT ID	110563
SHEET TOTAL	P.022 103

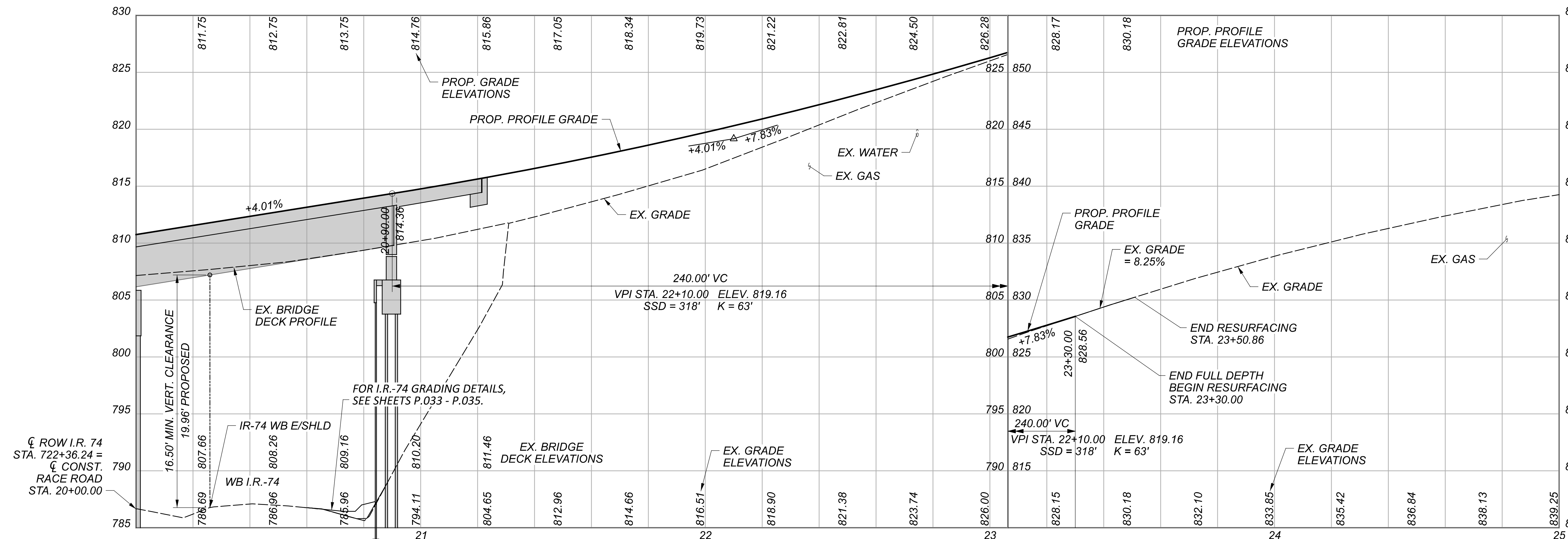


- LEGEND**
- - GUARDRAIL, TYPE MGS
 - ⊗ - ITEM 836, SEEDING AND EROSION CONTROL MAT, TYPE 1
 - ## - PROP. MSE WALL (NOTE 7)
 - + - MGS BRIDGE TERMINAL ASSEMBLY, TYPE 1
 - - MGS BRIDGE TERMINAL ASSEMBLY, TYPE 2
 - ⊗ - TREE (TBR)
 - C = 90° 00' 00"
 - ▨ - LIMITS OF MILL/FILL WORK, SEE TYPICAL SECTION SHEETS.
 - - CONC. DRIVEWAY APRON
 - ▨ - ITEM 601 TIED CONCRETE BLOCK MAT, TYPE 1 ON GEOTEXTILE FABRIC, AS PER SCD DM-1.1
 - ▨ - ITEM 601, ARTICULATING CONCRETE BLOCK REVETMENT SYSTEM, TYPE 1
 - ▲ - ANCHOR ASSEMBLY, MGS TYPE E (MASH 2016)
 - ◆ - ANCHOR ASSEMBLY, MGS TYPE T

- NOTES**
1. FOR ϕ DATA, SEE SHEET P.002.
 2. FOR FURTHER STRUCTURE INFORMATION, SEE SHEETS P.039 - P.083.
 3. FOR FURTHER TRAFFIC CONTROL INFORMATION, SEE SHEET P.038.
 4. FOR BUTT JOINT INFORMATION SEE, SCD BP-3.1.
 5. SEE SCD'S MGS-4.2, MGS-5.3, AND MGS-6.1 FOR FURTHER GUARDRAIL INFORMATION.
 6. FOR FURTHER DRIVEWAY INFORMATION AND DETAILS, SEE SHEET P.036.
 7. FOR FURTHER MSE WALL INFORMATION, SEE SHEETS P.051 - P.053.
 8. FOR I.R.-74 GUARDRAIL INFORMATION, SEE SHEET P.037.
 9. FOR CURB TRANSITION DETAIL, SEE SHEET P.004.
 10. REMOVE EX. PAVED GUTTER, REGRADE PER I-74 CROSS SECTIONS.
 11. TYPE D BARRIER END (SEE SCD RM-4.6).



PLAN AND PROFILE
STA. 20+00 TO END PROJECT



DESIGN AGENCY	fishbeck
DESIGNER	JAL
REVIEWER	JAH 05/01/24
PROJECT ID	110563
SHEET	P.023
TOTAL	103