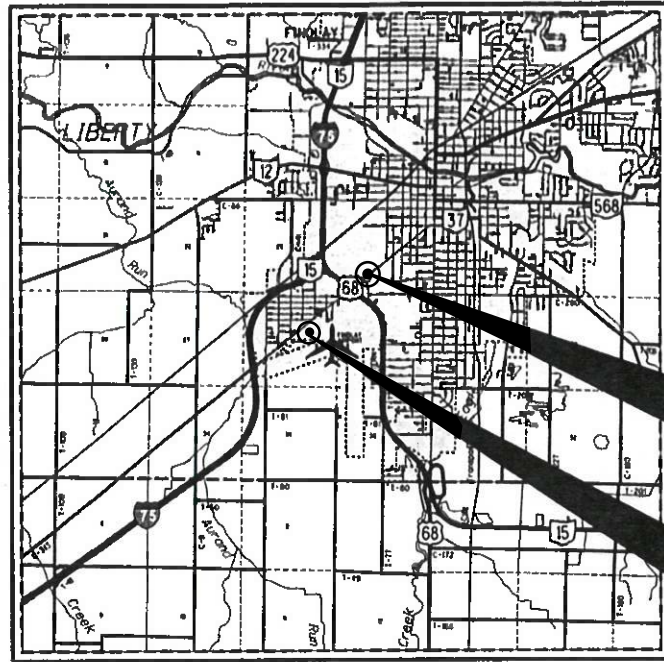


HAN - ODNR/ODOT-Paving  
 200282 PID - 109903  
 Dist 1 5/7/2020



LOCATION MAP

LATITUDE: 41°01'12" LONGITUDE: 83°40'19"

SCALE IN MILES



PORTION TO BE IMPROVED	-----
INTERSTATE HIGHWAY	=====
FEDERAL ROUTES	====
STATE ROUTES	-----
COUNTY & TOWNSHIP ROADS	-----
OTHER ROADS	-----

DESIGN DESIGNATION: N/A

DESIGN EXCEPTIONS

NONE REQUIRED

**UNDERGROUND UTILITIES**  
 Contact Two Working Days  
 Before You Dig

OHIO811. 8-1-1, or 1-800-362-2764  
 (Non-members must be called directly)

PLAN PREPARED BY:  
 OHIO DEPARTMENT OF TRANSPORTATION  
 DISTRICT 1

ENGINEERS SEAL:

SIGNED: *Eric J. Scheckelhoff*  
 DATE: 02/07/2020

STATE OF OHIO  
 DEPARTMENT OF TRANSPORTATION

**HAN-ODNR/ ODOT -  
 PAVING**  
 CITY OF FINDLAY  
 HANCOCK COUNTY

INDEX OF SHEETS:

TITLE SHEET	1
TYPICAL SECTIONS	2-3
GENERAL NOTES	4
GENERAL SUMMARY	5
SITE PLAN - ODNR DISTRICT OFFICE	6
SITE PLAN - ODOT HANCOCK GARAGE	7
ODNR ESTIMATED AREA AND QUANTITIES SUBSUMMARIES	8
ODOT ESTIMATED AREA AND QUANTITIES SUBSUMMARIES	9

PROJECT DESCRIPTION

REHABILITATE THE EXISTING ODNR PARKING LOT AND ODOT HANCOCK COUNTY GARAGE BY PLANING THE SURFACE AND/OR THEN PAVING WITH ASPHALT CONCRETE.

EARTH DISTURBED AREAS

PROJECT EARTH DISTURBED AREA:	N/A (MAINTENANCE)
ESTIMATED CONTRACTOR EARTH DISTURBED AREA:	N/A (MAINTENANCE)
NOTICE OF INTENT EARTH DISTURBED AREA:	N/A (MAINTENANCE)

2019 SPECIFICATIONS

THE STANDARD SPECIFICATIONS OF THE STATE OF OHIO, DEPARTMENT OF TRANSPORTATION, INCLUDING SUPPLEMENTAL SPECIFICATIONS LISTED IN THE PLANS AND CHANGES LISTED IN THE PROPOSAL SHALL GOVERN THIS IMPROVEMENT.

I HEREBY APPROVE THESE PLANS AND DECLARE THAT THE MAKING OF THIS IMPROVEMENT WILL NOT REQUIRE THE CLOSING TO TRAFFIC OF THE HIGHWAY.

STANDARD CONSTRUCTION DRAWINGS		SUPPLEMENTAL SPECIFICATIONS	SPECIAL PROVISIONS
BP-3.1	1-17-20	800	1-17-20
BP-7.1	7-20-18		

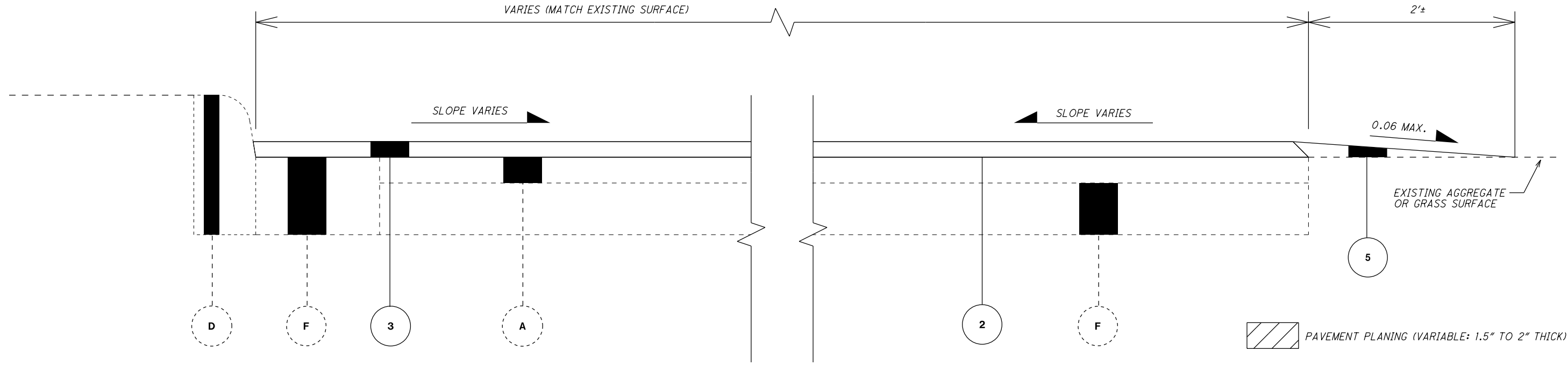
APPROVED: *Christopher A. High*  
 DATE: 02/07/2020 DISTRICT DEPUTY DIRECTOR

APPROVED: *Jack Markbank*  
 DATE: 2/18/20 DIRECTOR, DEPARTMENT OF TRANSPORTATION

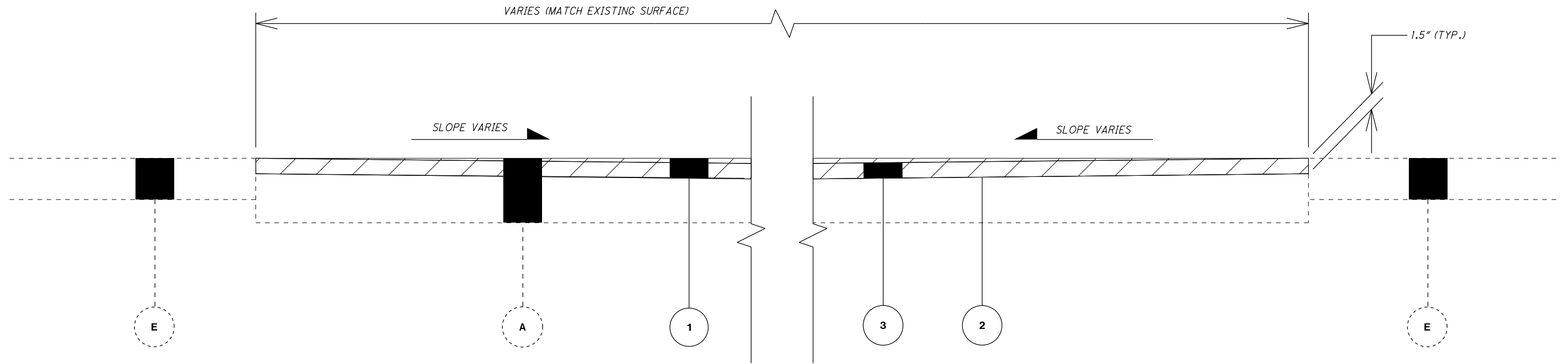
FEDERAL PROJECT NO. **NON-FEDERAL**  
 PID NO. **109903**  
 CONSTRUCTION PROJECT NO. **NONE**  
 RAILROAD INVOLVEMENT **NONE**  
**HAN-ODNR/ ODOT - PAVING**  
 1/9

Contract Proposal Available @  
 www.contracts.dot.state.oh.us/home

I:\Project\data\09903\Design\Roadway\Sheets\09903\_GY002 - ODNR (POTENTIALLY NEEDS UPDATED).ADDED\_BERM.dgn Sheet 01-MAY-2020 3:48PM eschecke



**ASPHALT SUBBASE - ODNR OFFICE & ARCHERY RANGE PARKING**



**ASPHALT SUBBASE - ODNR GARAGE AREA**

**PROPOSED LEGEND**

- ① ITEM 254 - PAVEMENT PLANING, ASPHALT CONCRETE, VARIABLE (1.5" TO 2" THICK)
- ② ITEM 407 - TACK COAT
- ③ ITEM 441 - ASPHALT CONCRETE SURFACE COURSE, TYPE 1, (448), (DRIVEWAYS) (1.5" THICK)
- ⑤ ITEM 617 - COMPACTED AGGREGATE (VARIABLE: 1.5" TO 0" THICK)

**EXISTING LEGEND**

- Ⓐ 2 1/2" ± TO 6 1/4" ± ASPHALT CONCRETE  
- 2 1/2" ± A.C. ODNR OFFICE & ARCHERY PARKING  
- 6 1/4" ± A.C. ODNR GARAGE AREA
- Ⓓ CONCRETE CURB
- Ⓔ CONCRETE APRON
- Ⓕ AGGREGATE

TYPICAL SECTIONS - ODNR FINDLAY DISTRICT OFFICE

HAN-ODNR / ODOT - PAVING

**UTILITIES**

THERE ARE NO KNOWN UNDERGROUND OR OVERHEAD UTILITIES WITHIN THE PROJECT CONSTRUCTION LIMITS.

**PERSONAL PROTECTIVE EQUIPMENT (PPE):**

THE CONTRACTOR SHALL FOLLOW ALL REQUIREMENTS OF SECTIONS XXIV AND XXXIV OF THE OHIO DEPARTMENT OF TRANSPORTATION SAFETY & HEALTH STANDARD OPERATING PROCEDURE 220-006(SP) EFFECTIVE: NOVEMBER 1, 2018 (EXCEPT AS AMENDED BELOW) AND ALL SUBSEQUENT UPDATES POSTED AT THE FOLLOWING WEBSITE:

HTTP://WWW.DOT.STATE.OH.US/POLICY/POLICIESAND-SOPS/POLICIES/220-006(SP).PDF

AMENDMENTS TO THE REQUIREMENTS OF THIS DOCUMENT ARE:

**XXIV. HEAD PROTECTION (HARD HATS)**

ALL PERSONS WITHIN THE RIGHT-OF-WAY OF ANY HIGHWAY OR ANY OTHER TYPE OF ROADWAY OR CONSTRUCTION SITE WHO ARE EXPOSED TO EITHER TRAFFIC (VEHICLES USING THE HIGHWAY FOR PURPOSES OF TRAVEL) OR CONSTRUCTION EQUIPMENT WITHIN THE WORK AREA, REGARDLESS OF JOB TYPE, SHALL WEAR APPROPRIATE HEAD PROTECTION. ALL HARD HATS MUST MEET OR EXCEED ANSI Z89.1-2009 TYPE 1, CLASS E-G REQUIREMENTS.

**XXXIV. SAFETY APPAREL AND VEST (HIGH VISIBILITY)**

ALL PERSONS WITHIN THE RIGHT-OF-WAY OF ANY HIGHWAY OR ANY OTHER TYPE OF ROADWAY OR CONSTRUCTION SITE WHO ARE EXPOSED TO EITHER TRAFFIC (VEHICLES USING THE HIGHWAY FOR PURPOSES OF TRAVEL) OR CONSTRUCTION EQUIPMENT WITHIN THE WORK AREA, REGARDLESS OF JOB TYPE, SHALL WEAR A HIGH-VISIBILITY SAFETY VEST THAT MEETS THE PERFORMANCE CLASS II OR CLASS III REQUIREMENTS OF THE ANSI/ISEA 107-2015 PUBLICATION ENTITLED "AMERICAN NATIONAL STANDARD FOR HIGH-VISIBILITY SAFETY APPAREL AND ACCESSORIES."

WORKERS MAY WEAR AN ANSI CLASS II OR ANSI CLASS III APPROVED RAIN SUIT, JACKET OR OTHER APPAREL WITHOUT A SAFETY VEST OVER IT.

**EXISTING PLANS**

EXISTING PLANS ENTITLED DISTRICT 1 CAMPUS REDEVELOPMENT MAY BE INSPECTED IN THE ODOT DISTRICT 1 OFFICE IN LIMA.

**ITEM 253 - PAVEMENT REPAIR**

THIS ITEM OF WORK SHALL CONSIST OF THE REMOVAL OF THE EXISTING PAVEMENT WHICH MAY BE ASPHALT, CONCRETE, OR A COMBINATION OF EACH, IN AREAS OF EXISTING PAVEMENT FAILURE.

THE ENGINEER SHALL DESIGNATE THE LOCATIONS AND LIMITS OF THE AREAS TO BE PREPARED. THE REPAIR AREAS SHALL BE ROUGHLY RECTANGULAR IN SHAPE AND CUT OR SAWED TO A NEAT LINE. THE PAVEMENT SHALL BE REMOVED WITHIN THE DESIGNATED AREAS BY METHODS WHICH WILL NOT DAMAGE THE ADJACENT PAVEMENT. THE DEPTH OF REMOVAL, AS DIRECTED BY THE ENGINEER, SHALL BE SUFFICIENT TO REMOVE ALL DETERIORATED PAVEMENT. THE MATERIALS SO REMOVED SHALL BE DISPOSED OF IN ACCORDANCE WITH 203.01.

THE VERTICAL FACES OF THE REPAIR AREA SHALL BE TACKED PRIOR TO PLACING THE 301 FOR ITEM 253 PAVEMENT REPAIR. THIS MATERIAL SHALL BE PLACED AND COMPACTED TO FINISH FLUSH WITH THE ADJACENT EXISTING PAVEMENT SURFACE PRIOR TO PLACING THE PROPOSED ASPHALT CONCRETE OVERLAY. ALL COMPACTION SHALL BE ACHIEVED BY MECHANICAL METHODS TO THE SATISFACTION OF THE ENGINEER.

**ITEM 253 - PAVEMENT REPAIR (CONTINUED)**

PAYMENT SHALL INCLUDE ALL LABOR, EQUIPMENT AND MATERIALS NECESSARY TO COMPLETE THE PAVEMENT REPAIR. AN ESTIMATED QUANTITY IS PROVIDED IN THE SUMMARY TO BE USED AS DIRECTED BY THE ENGINEER. PAYMENT WILL BE MADE AT THE UNIT PRICE BID PER CUBIC YARD OF ITEM 253 PAVEMENT REPAIR.

ITEM 253, PAVEMENT REPAIR 31 CY

THE ABOVE ESTIMATED QUANTITY IS A SUM OF THE QUANTITIES LISTED ELSE WHERE IN THE PLANS AND HAS BEEN CARRIED TO THE GENERAL SUMMARY FOR USE AT LOCATIONS IDENTIFIED BY THE ENGINEER. IT IS ESTIMATED THE REPAIRS WILL BE APPROXIMATELY 4 INCHES DEEP AND BE MOSTLY LONGITUDINAL REPAIRS. THE ESTIMATED WIDTH OF THESE REPAIRS ARE APPROXIMATELY 4 FEET.

**CONSTRUCTION SCHEDULE AND COORDINATION OF WORK**

THE CONTRACTOR SHALL COORDINATE ALL WORK WITH THE PROJECT ENGINEER AND MANAGERS AT THE ODNR DISTRICT OFFICE AND ODOT'S HANCOCK COUNTY GARAGE. THE CONTRACTOR SHALL PROVIDE NO DISRUPTION TO THE DAILY OPERATIONS OF THE ODNR DISTRICT OFFICE AND ODOT'S HANCOCK COUNTY GARAGE.

THE CONTRACTOR WILL NOT BE PERMITTED TO WORK AT NIGHT.

THE TYPICAL HOURS OF THE ODNR DISTRICT OFFICE ARE MONDAY THRU FRIDAY, 8 AM THRU 5 PM. HOWEVER, SOME STAFF WORK OUTSIDE THESE HOURS AND ON WEEKENDS. THE ARCHERY RANGE AT THE ODNR DISTRICT OFFICE SHALL REMAIN OPEN AT ALL TIMES. ADDITIONAL COORDINATE WILL BE REQUIRED FOR CURB RAMP WORK AT THE ODNR DISTRICT OFFICE TO ACCOMMODATE DELIVERIES AND PROVIDE A.D.A. ACCESSIBLE FACILITIES.

THE TYPICAL HOURS OF THE ODOT HANCOCK COUNTY GARAGE ARE MONDAY THRU FRIDAY, 7 AM THRU 3:30 PM. HOWEVER, SOME STAFF WORK OUTSIDE THESE HOURS AND ON WEEKENDS. THE HANCOCK CO. GARAGE ACCESS DRIVE TO LIMA AVE. NEEDS TO REMAIN OPEN DURING ODOT'S NORMAL HOURS. THE ODOT HANCOCK CO. GARAGE SITE IS SECURED BY FENCE AND AN ENTRANCE GATE. THE CONTRACTOR WILL NEED TO COORDINATE ACCESS WITH THE PROJECT MANAGER AND ODOT FACILITIES AND HANCOCK CO. MANAGERS.

WHEN COMPLETING THE WORK AT THE ODNR DISTRICT OFFICE, THE CONTRACTOR SHALL EXERCISE CARE AND USE APPROPRIATELY SIZED EQUIPMENT AND LOADING TO AVOID DAMAGING THE EXISTING PAVEMENT. IF THE CONTRACTOR DISREGARDS THIS DIRECTION, THE CONTRACTOR SHALL BE RESPONSIBLE FOR ALL REPAIRS TO THE PAVEMENT DAMAGED BY THE CONTRACTOR'S WORK AND/OR EQUIPMENT. THESE REPAIRS SHALL BE COMPLETED PER ITEM 235 AND TO THE SATISFACTION OF THE PROJECT ENGINEER AT NO ADDITIONAL COST TO THE STATE.

AT ODOT'S HANCOCK CO. GARAGE, ODOT FORCES WILL RE-ESTABLISH ANY EXISTING PAVEMENT MARKINGS AND DETECTOR LOOPS (LOCATED NEAR THE GATE). FIVE (5) DAYS PRIOR TO THE CONTRACTOR STARTING WORK AT ODOT'S HANCOCK CO. GARAGE, THE CONTRACTOR SHALL COORDINATE THEIR WORK WITH ODOT FACILITIES AND HANCOCK CO. MANAGERS TO MAKE ARRANGEMENTS FOR RE-ESTABLISHING THE EXISTING PAVEMENT MARKINGS AND INSTALLATION OF THE DETECTOR LOOPS INTO THE PAVEMENT.

**AIRWAY/HIGHWAY CLEARANCE FOR AIRPORTS AND HELIPORTS**

THIS PROJECT HAS BEEN IDENTIFIED AS BEING WITHIN THE INFLUENCE AREA OF A PUBLIC USE AIRPORT OR HELIPORT. NO TEMPORARY STRUCTURES OR CONSTRUCTION EQUIPMENT AT MAXIMUM OPERATING HEIGHT SHALL EXCEED A HEIGHT OF 25 FT. IF ANY TEMPORARY STRUCTURES OR CONSTRUCTION EQUIPMENT WILL EXCEED THIS HEIGHT, FURTHER COORDINATION WITH THE FEDERAL AVIATION ADMINISTRATION (FAA), AND THE ODOT OFFICE OF AVIATION, WILL BE NECESSARY PRIOR TO ERECTING SUCH TEMPORARY STRUCTURES OR OPERATING SUCH EQUIPMENT ON THE PROJECT. THE CONTRACTOR WILL BE REQUIRED TO FILE A NEW FAA FORM 7460-1, ADVISING THE FAA THAT AERONAUTICAL STUDY NO. 2020-AGL-8936 OE AND 2020-AGL-8937-OE ARE BEING RESUBMITTED AND THAT AN ALTERATION TO THE ORIGINAL SUBMISSION IS REQUESTED.

NOTIFY THE ODOT OFFICE OF AVIATION WHEN RESUBMITTING FAA FORM 7460-1. NO TEMPORARY STRUCTURES OR CONSTRUCTION EQUIPMENT SHALL EXCEED THE PERMISSIBLE HEIGHT, UNTIL A COPY OF THE FAA APPROVAL AND THE ODOT OFFICE OF AVIATION PERMIT HAS BEEN FURNISHED TO THE PROJECT ENGINEER.

FAA APPROVAL MAY TAKE UP TO 45 DAYS. ALL SUBMISSIONS SHALL BE DIRECTED TO THESE OFFICES:

EXPRESS PROCESSING CENTER  
THE FEDERAL AVIATION ADMINISTRATION  
SOUTHWEST REGIONAL OFFICE  
AIR TRAFFIC AIRSPACE BRANCH ASW-520  
2601 MEACHAN BLVD.  
FORT WORTH, TX 76137-4298

OHIO DEPARTMENT OF TRANSPORTATION  
OFFICE OF AVIATION  
2829 WEST DUBLIN-GRANVILLE ROAD  
COLUMBUS, OHIO 43235  
614-387-2346

**TEMPORARY CONSTRUCTION EQUIPMENT ADJACENT TO AIRPORT**

SINCE THE PROJECT RUNS ALONG/ADJACENT TO FINDLAY AIRPORT (FOY), THE CONTRACTOR'S EQUIPMENT HAS BEEN DETERMINED TO EXCEED OBSTRUCTION STANDARDS FOR MOST OF THE PROJECT LENGTH. DUE TO EXCEEDING THE OBSTRUCTION STANDARDS, THE CONTRACTOR SHALL COMPLY WITH THE FOLLOWING CONDITIONS.

THIS TEMPORARY EQUIPMENT MUST BE MARKED WITH A RED LIGHT AND FLAG. RED LIGHT MUST CONFORM WITH CHAPTER 5, RED OBSTRUCTION LIGHT SYSTEM, (L-810 OR EQUIVALENT AND MINIMUM 32.5 CANDELAS) AND FLAG MUST CONFORM TO CHAPTER 3, MARKING GUIDELINES, IN ACCORDANCE WITH FAA ADVISORY CIRCULAR (AC) 70/7460-1 L CHANGE 1, OBSTRUCTION MARKING AND LIGHTING, FLAGS/RED LIGHTS - CHAPTERS 3 (MARKED), 4, 5 (RED), & 12.

THE TEMPORARY EQUIPMENT MUST BE LOWERED TO THE GROUND WHEN NOT IN USE AND DURING THE HOURS BETWEEN SUNSET AND SUNRISE.

THE FAA SHALL BE NOTIFIED 3 BUSINESS DAYS PRIOR TO THE TEMPORARY EQUIPMENT BEING ERECTED AND AGAIN WHEN THE STRUCTURE IS REMOVED FROM THE SITE. NOTIFICATION SHOULD BE MADE TO THIS OFFICE (SOUTHWEST REGIONAL OFFICE) THROUGH THE CONTRACTOR'S REGISTERED E-FILING ACCOUNT. NOTIFICATION IS NECESSARY SO THAT AERONAUTICAL PROCEDURES CAN BE TEMPORARILY MODIFIED TO ACCOMMODATE THE STRUCTURE. (7460-2, PART 1, NOTAM)

**TEMPORARY CONSTRUCTION EQUIPMENT ADJACENT TO AIRPORT (CONTINUED)**

NOTIFICATION IS REQUIRED AGAIN THROUGH THE CONTRACTOR'S REGISTERED E-FILING ACCOUNT WHEN THE TEMPORARY EQUIPMENT IS REMOVED FROM THE SITE FOR NOTICE TO AIRMAN (NOTAM) CANCELLATION. (7460-2, PART 2, DISMANTLED).

THE CONTRACTOR SHALL NOTIFY THE MANAGER OF FINDLAY AIRPORT (FOY) (SEE CONTACT INFORMATION BELOW) AT LEAST 3 BUSINESS DAYS PRIOR TO THE TEMPORARY EQUIPMENT BEING ERECTED AND AGAIN WHEN THE EQUIPMENT IS REMOVED FROM THE SITE.

IT IS REQUIRED THAT FAA FORM 7460-2, NOTICE OF ACTUAL CONSTRUCTION OR ALTERATION, BE E-FILED WITHIN 5 DAYS AFTER THE TEMPORARY EQUIPMENT IS REMOVED.

ANY FAILURE OR MALFUNCTION THAT LASTS MORE THAN THIRTY (30) MINUTES AND AFFECTS A TOP LIGHT OR FLASHING OBSTRUCTION LIGHT, REGARDLESS OF ITS POSITION, SHOULD BE REPORTED IMMEDIATELY TO (877) 487-6867 SO A NOTICE TO AIRMEN (NOTAM) CAN BE ISSUED. AS SOON AS THE NORMAL OPERATION IS RESTORED, NOTIFY THE SAME NUMBER.

IF MARKING/LIGHTING ARE ACCOMPLISHED ON A VOLUNTARY BASIS, WE RECOMMEND IT BE INSTALLED AND MAINTAINED IN ACCORDANCE WITH FAA CIRCULAR 70/7460-1L CHANGE 1.

CONTACT INFORMATION:  
MATT MCVICKER  
FINDLAY AIRPORT MANAGER  
1615 GRAY STREET  
FINDLAY, OHIO 45850  
PHONE: 419-422-4182  
CELL PHONE: 419-704-9803  
EMAIL: mmcvicker@findlayohio.com

ANY COST AND DELAYS ASSOCIATED WITH THE ABOVE REQUIREMENTS SHALL BE CONSIDER INCIDENTAL TO THE ITEMS OF WORK.

ABOVE ESTIMATED QUANTITY IS A SUM OF THE QUANTITIES LISTED ELSE WHERE IN THE PLANS AND HAS BEEN CARRIED TO THE GENERAL SUMMARY FOR USE AT LOCATIONS IDENTIFIED BY THE ENGINEER. IT IS ESTIMATED THE REPAIRS WILL BE APPROXIMATELY 4 INCHES DEEP AND BE MOSTLY LONGITUDINAL REPAIRS. THE ESTIMATED WIDTH OF THESE REPAIRS ARE APPROXIMATELY 4 FEET.

**CONTACT INFORMATION**

THE CONTRACTOR SHALL NOT BEGIN WORK AT THE HANCOCK COUNTY GARAGE UNTIL AFTER CONTACTING THE ODOT DISTRICT ONE FACILITIES AND HANCOCK COUNTY MANAGERS. BELOW IS THEIR CONTACT INFORMATION:

TITLE	NAME	PHONE NO.
FACILITIES PROGRAM ADMIN.	TONY LOTZ	(419) 999-6791
BUILDING CONST. SUPER.	MARK VANDEMARK	(419) 999-6796
HANCOCK CO. MANAGER	DEIDRA NOEL	(419) 999-6731
TRANSPORTATION MANAGER	JAMES HEACOCK	(419) 999-6738
TRANSPORTATION MANAGER	MATTHEW CLAY	(419) 999-6732

THE CONTRACTOR SHALL NOT BEGIN WORK AT ODNR FINDLAY DISTRICT OFFICE UNTIL AFTER CONTACTING THE ODNR DISTRICT MANAGER. BELOW IS THEIR CONTACT INFORMATION:

TITLE  
DISTRICT MANAGER OHIO DIVISION OF WILDLIFE DISTRICT TWO

NAME	PHONE NO.
SCOTT BUTTERWORTH	419-429-8351

I:\Project\09903\Design\Roadway\Sheets\09903\_GN001(POTENTIALLY NEEDS UPDATED)\_ADD\_Rldgn\_Sheet 01-MAY-2020 3:34PM eschecke

I:\Project\09903\Design\Roadway\Sheets\09903\_G001 (IN PROGRESS).dgn Sheet 01-MAY-2020 4:25PM eschecke

SHEET NUM.										PART.		ITEM	ITEM EXT	GRAND TOTAL	UNIT	DESCRIPTION
6	8	9								01/NFP/OT/ODNR	02/NFP/OT/ODOT					
	320									320		202	30000	320	SF	ROADWAY WALK REMOVED
	104									104		608	52000	104	SF	CURB RAMP
	216									216		608	52001	216	SF	CURB RAMP, AS PER PLAN
										500	500	832	30000	1,000	EACH	EROSION CONTROL
		10	21							10	21	253	02000	31	CY	PAVEMENT
		3,293	9,575							3,293	9,575	254	01000	12,868	SY	PAVEMENT PLANING, ASPHALT CONCRETE, 1.5" THICKNESS
		1,183								1,183		254	01000	1,183	SY	PAVEMENT PLANING, ASPHALT CONCRETE, VARIABLE THICKNESS
		90	191							90	191	254	01600	281	SY	PATCHING PLANED SURFACE
		380	814							380	814	407	10000	1,194	GAL	TACK COAT
		187	399							187	399	441	50400	586	CY	ASPHALT CONCRETE SURFACE COURSE, TYPE 1, (448), (DRIVEWAYS)
		2								2		617	10100	2	CY	COMPACTED AGGREGATE
		1,708								1,708		642	01200	1,708	FT	TRAFFIC CONTROL PARKING LOT STALL MARKING, TYPE 1
		8								8		642	01300	8	EACH	LANE ARROW, TYPE 1
		3								3		642	01702	3	EACH	HANDICAP SYMBOL MARKING, TYPE 1
		689								689		642	00700	689	FT	TRANSVERSE/DIAGONAL LINE, TYPE 1
										LS	LS	623	10000	LS		INCIDENTALS CONSTRUCTION LAYOUT STAKES AND SURVEYING
										LS	LS	624	10000	LS		MOBILIZATION

CALCULATED CN	CHECKED EJS	<b>GENERAL SUMMARY</b>



I:\Projectdata\109903\Design\Roadway\Sheets\109903\_GP002 - ODNR\_ addendum R1.dgn Sheet 30-APR-2020 4:20PM eschecke

Ref. No.	Quantities			Dimensions			
	202	608		Ramp		Landing	
	Walk Removed	Curb Ramp (Type B2)	Curb Ramp, As Per Plan (Type B2)	Width	Length	Width	Length
	SF	SF	SF	FT	FT	FT	FT
CR-1	104	104		4	22	4	4
CR-2	216		216	4.7 (Average)	28	5.5	15.3
<b>SUBTOTALS</b>	<b>320</b>	<b>104</b>	<b>216</b>				

Note: Curb Ramp subtotals carried to General Summary (Sheet 5)

**ITEM 644 - TRANSVERSE DIAGONAL LINE**

- AREA A = 98.4 FT.
- AREA B = 214.7 FT.
- AREA C = 214.7 FT.
- AREA D = 82.7 FT.
- AREA E = 191.9 FT.
- AREA F = 367.6 FT.
- AREA G = 147.0 FT.
- AREA H = 121.9 FT.
- AREA I = 249.8 FT.
- AREA J = 109.8 FT.

**ITEM 608 - CURB RAMP, AS PER PLAN (TYPE B2)**

IN ADDITION TO THE REQUIREMENT OF STANDARD CONSTRUCTION DRAWING BP-7.1 AND CMS SECTION 608, THE CONTRACTOR SHALL CAREFULLY DISMANTLE AND STORE EXISTING (HAND) RAILING (INCLUDING POSTS, RAILINGS, ANCHORS AND ANY OTHER HARDWARE) FOR REUSE. THE CONTRACTOR SHALL REINSTALL THE EXISTING (HAND) RAILING AND PROVIDE ANY REPLACEMENT PARTS AND HARDWARE AS NEEDED.

ALL LABOR, MATERIALS AND EQUIPMENT NEEDED TO COMPLETE THE ABOVE WORK SHALL BE COMPLETED TO THE SATISFACTION OF THE PROJECT ENGINEER AND SHALL BE INCLUDED IN THE UNIT PRICE BID FOR ITEM 608, CURB RAMP, AS PER PLAN.

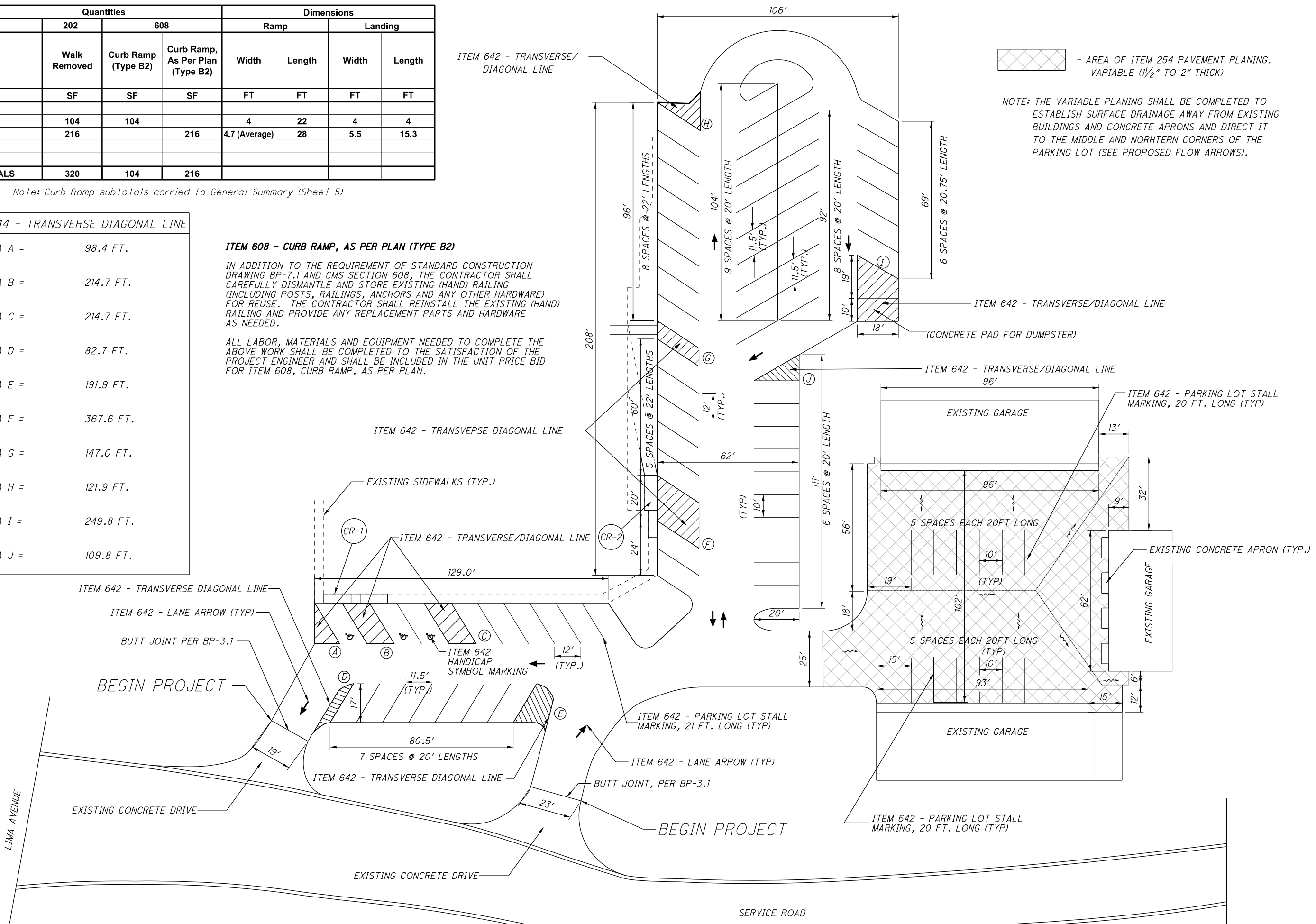
- AREA OF ITEM 254 PAVEMENT PLANING, VARIABLE (1 1/2" TO 2" THICK)

NOTE: THE VARIABLE PLANING SHALL BE COMPLETED TO ESTABLISH SURFACE DRAINAGE AWAY FROM EXISTING BUILDINGS AND CONCRETE APRONS AND DIRECT IT TO THE MIDDLE AND NORHTERN CORNERS OF THE PARKING LOT (SEE PROPOSED FLOW ARROWS).



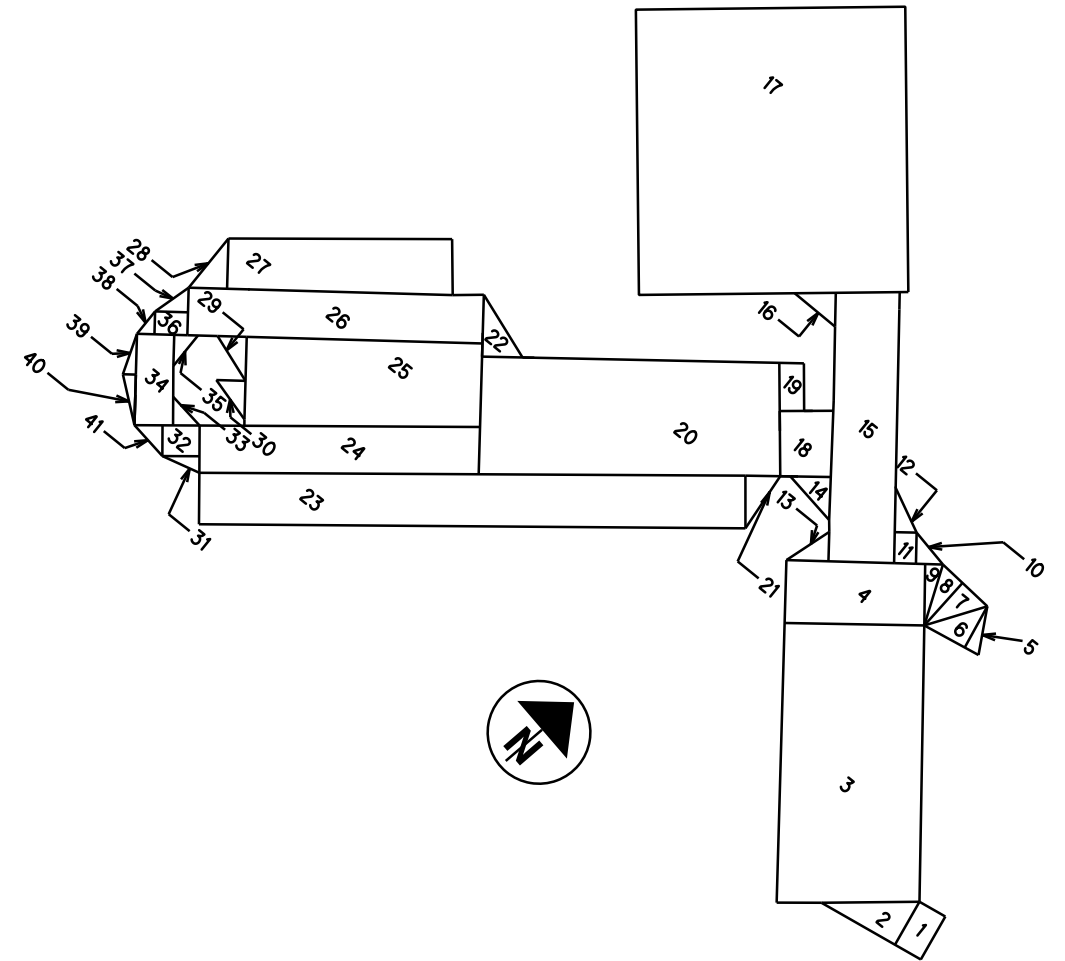
SITE PLAN - ODNR DISTRICT OFFICE

HAN-ODNR/ODOT - PAVING



I:\Project\data\09903\Design\Roadway\Sheets\09903\_G002 - ODNR (IN PROGRESS).dgn Sheet 01-MAY-2020 4:19PM eschecke

SHAPE NUMBER	PAVEMENT QUANTITIES												
	LENGTH (L)	WIDTH (W)	HEIGHT (H)	BASE (B)	SURFACE AREA (A) A=LxW/9 (RECTANGLE)	SURFACE AREA (A) A=0.5xBxH/9 (TRIANGLE)	617	253	254	254	254	407	441
	FT	FT	FT	FT	SY	SY	CY	CY	SY	SY	SY	GAL	CY
1	18	11			22			0.0	23	0.0	0.5	1.9	0.9
2			18	31		32		0.1	32	0.0	0.6	2.7	1.3
3	104	53			609			1.4	609	0.0	12.2	52	25
4	51	23			133			0.3	133	0.0	2.7	11.3	5.6
5			17	6		6		0.0	5.6	0.0	0.1	0.5	0.2
6			17	17		16		0.0	17	0.0	0.3	1.4	0.7
7			21	13		15		0.0	15	0.0	0.3	1.3	0.6
8			21	10		12		0.0	12	0.0	0.2	1.0	0.5
9			23	7		8		0.0	8.3	0.0	0.2	0.7	0.3
10			12	10		6		0.0	6.4	0.0	0.1	0.5	0.3
11	12	8			10			0.0	10	0.0	0.2	0.9	0.4
12			8	17		8		0.0	7.6	0.0	0.2	0.6	0.3
13			16	11		9		0.0	9.4	0.0	0.2	0.8	0.4
14			16	15		13		0.0	13	0.0	0.3	1.1	0.6
15	100	24			266*			0.6	266	0.0	5.3	23	11
16			13	15		11		0.0	0	10.6	0.2	0.9	0.4
17	106	100			1172			2.6	0	1172.3	23.4	100	49
18	24	19			52*			0.1	52	0.0	1.0	4.4	2.2
19	18	9			18			0.0	18	0.0	0.4	1.5	0.7
20	112	43			527*			1.2	527	0.0	10.5	45	22
21			20	13		14		0.0	14	0.0	0.3	1.2	0.6
22			23	15		19		0.0	19	0.0	0.4	1.6	0.8
23	202	19			434*			1.0	434	0.0	8.7	37	18
24	103	18			201			0.4	202	0.0	4.0	17	8.4
25	87	33			310*			0.7	310	0.0	6.2	26	13
26	109	18			214			0.5	214	0.0	4.3	18	8.9
27	83	21			182*			0.4	182	0.0	3.6	16	7.6
28			19	14		15		0.0	15	0.0	0.3	1.3	0.6
29			16	11		10		0.0	9.8	0.0	0.2	0.8	0.4
30			14	11		9		0.0	8.6	0.0	0.2	0.7	0.4
31			6	14		5		0.0	4.7	0.0	0.1	0.4	0.2
32	14	11			17			0.0	17	0.0	0.3	1.5	0.7
33			11	10		6		0.0	5.8	0.0	0.1	0.5	0.2
34	34	14			52*			0.1	52	0.0	1.0	4.4	2.2
35			12	9		6		0.0	5.6	0.0	0.1	0.5	0.2
36	12	8			11			0.0	12	0.0	0.2	1.0	0.5
37			9	12		6		0.0	6.2	0.0	0.1	0.5	0.3
38			6	8		3		0.0	3.1	0.0	0.1	0.3	0.1
39			15	5		4		0.0	4.0	0.0	0.1	0.3	0.2
40			19	5		5		0.0	5.0	0.0	0.1	0.4	0.2
41			10	11		7		0.0	6.6	0.0	0.1	0.6	0.3
7-12, 15								0.5					
15, 18-19								0.3					
22, 26-27								0.8					
23, 28, 31, 37-41								0.6					
<b>TOTALS CARRIED TO GENERAL SUMMARY</b>							<b>2</b>	<b>10</b>	<b>3293</b>	<b>1183</b>	<b>90</b>	<b>380</b>	<b>187</b>



PAVEMENT MARKING QUANTITIES				
LOCATION	642	642	642	642
	PARKING LOT STALL MARKING, TYPE 1	LANE ARROW, TYPE 1	HANDICAP SYMBOL MARKING, TYPE 1	TRANSVERSE/DIAGONAL LINE, TYPE 1
	FT	EACH	EACH	FT
ODNR LOT	1708	8	3	688.5
<b>TOTALS TO GENERAL SUMMARY</b>	<b>1708</b>	<b>8</b>	<b>3</b>	<b>688.5</b>