

SHEET NUM.										PART.	ITEM	ITEM	GRAND	UNIT	DESCRIPTION	SEE SHEET NO.	CALCULATED	AA	CHECKED	EAK														
5	13	22	23				\$0040CS Q001	OFFICE CALCS	01/STR/B R		EXT	TOTAL																						
ROADWAY																																		
LS									LS	201	11000	LS			CLEARING AND GRUBBING																			
	613								613	202	23000	613	SY	PAVEMENT REMOVED																				
	625								625	202	38000	625	FT	GUARDRAIL REMOVED																				
		363							363	203	10000	363	CY	EXCAVATION																				
		175							175	203	20000	175	CY	EMBANKMENT																				
								1,442	1,442	204	10000	1,442	SY	SUBGRADE COMPACTION																				
	125								125	606	15050	125	FT	GUARDRAIL, TYPE MGS																				
	4								4	606	26150	4	EACH	ANCHOR ASSEMBLY, MGS TYPE E																				
	4								4	606	35002	4	EACH	MGS BRIDGE TERMINAL ASSEMBLY, TYPE 1																				
EROSION CONTROL																																		
	2								2	601	21050	2	SY	TIED CONCRETE BLOCK MAT WITH TYPE 1 UNDERLAYMENT																				
	270								270	601	32104	270	CY	ROCK CHANNEL PROTECTION, TYPE B WITH GEOTEXTILE FABRIC																				
1,122									1,122	659	10000	1,122	SY	SEEDING AND MULCHING																				
56									56	659	14000	56	SY	REPAIR SEEDING AND MULCHING																				
0.15									0.15	659	20000	0.15	TON	COMMERCIAL FERTILIZER																				
									0.23	659	31000	0.23	ACRE	LIME																				
0.23									6	659	35000	6	MGAL	WATER																				
6									2,000	832	30000	2,000	EACH	EROSION CONTROL																				
DRAINAGE																																		
	266								266	605	05100	266	FT	4" SHALLOW PIPE UNDERDRAINS																				
	966								966	605	06000	966	FT	4" BASE PIPE UNDERDRAINS																				
	141								141	611	00410	141	FT	4" CONDUIT, TYPE F FOR UNDERDRAIN OUTLET																				
	1								1	611	99710	1	EACH	PRECAST REINFORCED CONCRETE OUTLET																				
PAVEMENT																																		
								817	817	254	01000	817	SY	PAVEMENT PLANING, ASPHALT CONCRETE (1.5" )																				
								213	213	301	46000	213	CY	ASPHALT CONCRETE BASE, PG64-22																				
								215	215	304	20000	215	CY	AGGREGATE BASE																				
								266	266	407	10000	266	GAL	TACK COAT																				
								7	7	411	10000	7	CY	STABILIZED CRUSHED AGGREGATE																				
								120	120	441	50000	120	CY	ASPHALT CONCRETE SURFACE COURSE, TYPE 1, (448), PG64-22																				
TRAFFIC CONTROL																																		
			26						26	621	00100	26	EACH	RPM																				
			26						26	621	54000	26	EACH	RAISED PAVEMENT MARKER REMOVED																				
			8						8	626	00112	8	EACH	BARRIER REFLECTOR, TYPE 3, BI-DIRECTIONAL																				
			0.38						0.38	642	00104	0.38	MILE	EDGE LINE, 6", TYPE 1																				
			0.38						0.38	642	00300	0.38	MILE	CENTER LINE, TYPE 1																				
STRUCTURE OVER 20 FOOT SPAN (HIG-041-0040)																																		
							LS		LS	202	11203	LS			PORTIONS OF STRUCTURE REMOVED, OVER 20 FOOT SPAN, AS PER PLAN						26													
							123		123	202	22900	123	SY	APPROACH SLAB REMOVED																				
							432		432	202	23500	432	SY	WEARING COURSE REMOVED																				
							LS		LS	503	11101	LS			COFFERDAMS AND EXCAVATION BRACING, AS PER PLAN						33													
							190		190	503	21101	190	CY	UNCLASSIFIED EXCAVATION, AS PER PLAN							28													
							31,950		31,950	509	10000	31,950	LB	EPOXY COATED REINFORCING STEEL																				
							2		2	511	33500	2	EACH	SEMI-INTEGRAL DIAPHRAGM GUIDE																				
							91		91	511	34444	91	CY	CLASS QC2 CONCRETE, BRIDGE DECK																				
							74		74	511	43510	74	CY	CLASS QC1 CONCRETE, ABUTMENT INCLUDING FOOTING																				
							46		46	511	46210	46	CY	CLASS QC1 CONCRETE, RETAINING/WINGWALL INCLUDING FOOTING																				
							85		85	512	10100	85	SY	SEALING OF CONCRETE SURFACES (EPOXY-URETHANE)																				
							136		136	512	33001	136	SY	TYPE 2 WATERPROOFING, AS PER PLAN							35, 36													
							54,710		54,710	513	10261	54,710	LB	STRUCTURAL STEEL MEMBERS, LEVEL 3, AS PER PLAN							26													
							990		990	513	20000	990	EACH	WELDED STUD SHEAR CONNECTORS																				
							3		3	516	13600	3	SF	1" PREFORMED EXPANSION JOINT FILLER																				
							42		42	516	13900	42	SF	2" PREFORMED EXPANSION JOINT FILLER																				
							128		128	516	14020	128	FT	SEMI-INTEGRAL ABUTMENT EXPANSION JOINT SEAL																				

GENERAL SUMMARY

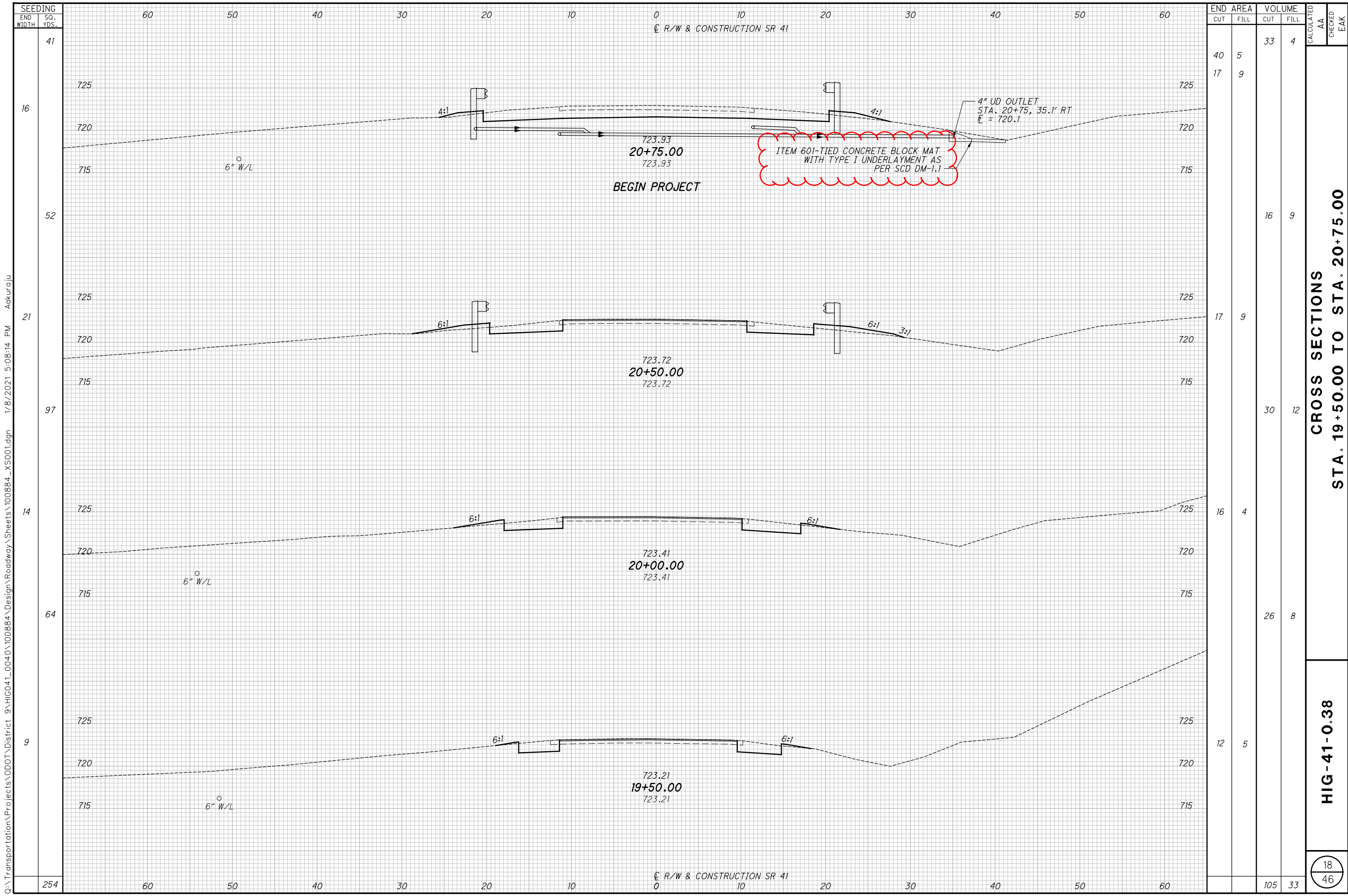
HIG - 41 - 0.38

O:\Transportation\Projects\000T\DisTrct 9\HIG04L 0040\00884\Design\Roadway\Sheets\00884\_GG001.dgn 1/8/2021 5:07:54 PM Akuraju

o:\Transportation\Projects\000T\DisTrct 9\HIG04L\_0040\00884\Design\Roadway\Sheets\00884\_GS001.dgn 1/8/2021 5:08:06 PM Aakuraju

REF. NO.	SHEET NO.	STATION		SIDE	202		601		606			605		611		BENDS & BRANCHES		
					PAVEMENT REMOVED SQ YD	GUARDRAIL REMOVED FT	TIED CONCRETE BLOCK MAT WITH TYPE I UNDERLAYMENT SQ YD	ROCK CHANNEL PROTECTION, TYPE B WITH AGGREGATE FILTER CU YD	GUARDRAIL, TYPE MGS FT	ANCHOR ASSEMBLY, MGS TYPE E EA	MGS BRIDGE TERMINAL ASSEMBLY, TYPE I EA	4" SHALLOW PIPE UNDERDRAINS FT	4" BASE PIPE UNDEDRAINS FT	4" CONDUIT, TYPE F FOR UNDERDRAIN OULTLETS FT	PRECAST REINFORCED CONCRETE OUTLET EA	FOR INFORMATION ONLY		
																4" 45 WYE	4" - 45 BEND	4" TEE
E-1	15	21+64.84	21+82.77	LT/RT														
E-2	15	21+97.15	22+15.15	LT/RT														
GR-1	15	20+46.83	21+71.88	RT					50.00	1	1							
GR-2	15	20+61.70	21+49.20	LT					12.50	1	1							
GR-3	15	22+30.79	23+18.29	RT					12.50	1	1							
GR-4	15	22+08.16	23+33.16	LT					50.00	1	1							
R-1	15	19+82.76	21+45.55	LT		163												
R-2	15	20+10.84	21+66.58	RT		156												
R-3	15	22+12.14	23+68.21	LT		156												
R-4	15	22+50.33	23+75.00	RT		150												
R-5	14 - 15	19+00.00	21+36.84	LT/RT	278													
R-6	15 - 16	22+43.15	25+00.00	LT/RT	335													
DRAINAGE																		
UD-1	14 - 15	19+00.00	21+19.14	LT								220	14			1	1	1
UD-2	15	20+75.00	21+24.04	LT			2				50		47	1				1
UD-3	15	20+75.00	21+37.23	RT						63			5					1
UD-4	14 - 15	19+00.00	21+42.13	RT								243				1	1	1
UD-5	15 - 16	22+37.86	25+00.00	LT								263	15			1	1	1
UD-6	15	22+42.76	23+25.00	LT						83			55					1
UD-7	15	22+55.95	23+25.00	RT						70			5					1
UD-8	15 - 16	22+60.85	25+00.00	RT								240				1	1	1
<b>TOTALS CARRIED TO GENERAL SUMMARY</b>					613	625	2	270	125.00	4	4	266	966	141	1	X	X	X

CALCULATED AA CHECKED EAK	<b>ROADWAY &amp; DRAINAGE SUBSUMMARY</b>	<b>HIG - 41 - 0.38</b>
------------------------------------	--	------------------------



SEEDING	END WIDTH	
	SO. YDS.	
41	60	60
16	50	50
52	40	40
21	30	30
97	20	20
14	10	10
64	0	0
9	10	10
254	20	20
	30	30
	40	40
	50	50
	60	60

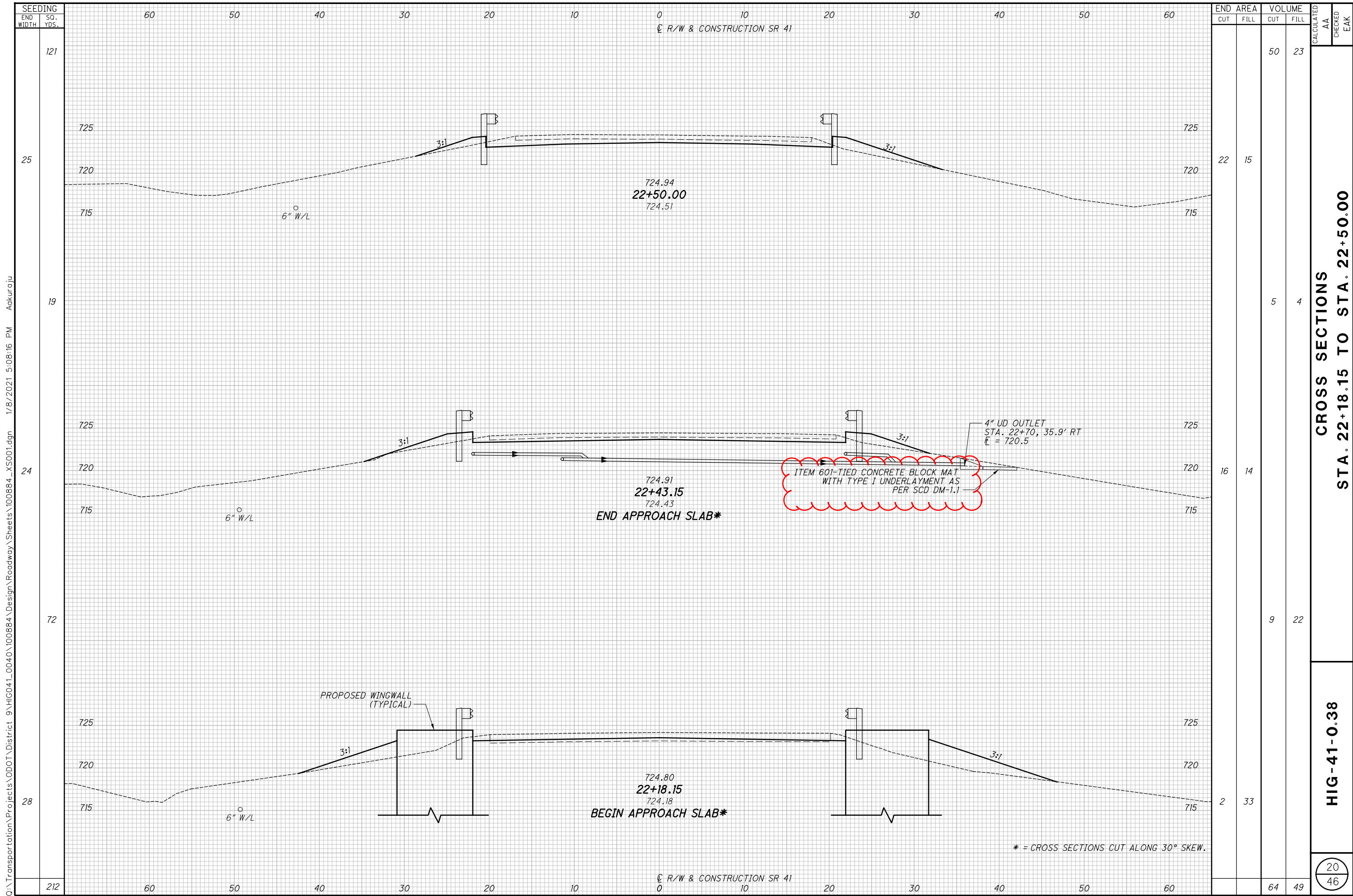
END AREA		VOLUME		CALCULATED AA	CHECKED EAK
CUT	FILL	CUT	FILL		
40	5	33	4		
17	9				
		16	9		
17	9				
		30	12		
16	4				
		26	8		
12	5				
		105	33		

**CROSS SECTIONS**  
**STA. 19+50.00 TO STA. 20+75.00**

**HIG-41-0.38**

18  
 46

o:\Transportation\Projects\ODOT\District 9\HIG041\_0040\100884\Design\Roadway\Sheets\100884\_X5001.dgn 1/8/2021 5:08:14 PM Akuraju



o:\Transportation\Projects\ODOT\District 9\HIG041\_0040\100884\Design\Roadway\Sheets\100884\_X5001.dgn 1/8/2021 5:08:16 PM Akurgju

SEEDING END WIDTH	SO. YDS.	END AREA		VOLUME		CALCULATED AA	CHECKED EAK
		CUT	FILL	CUT	FILL		
121	25	22	15	50	23		
19	24	16	14	5	4		
72	28	2	33	9	22		
212				64	49		

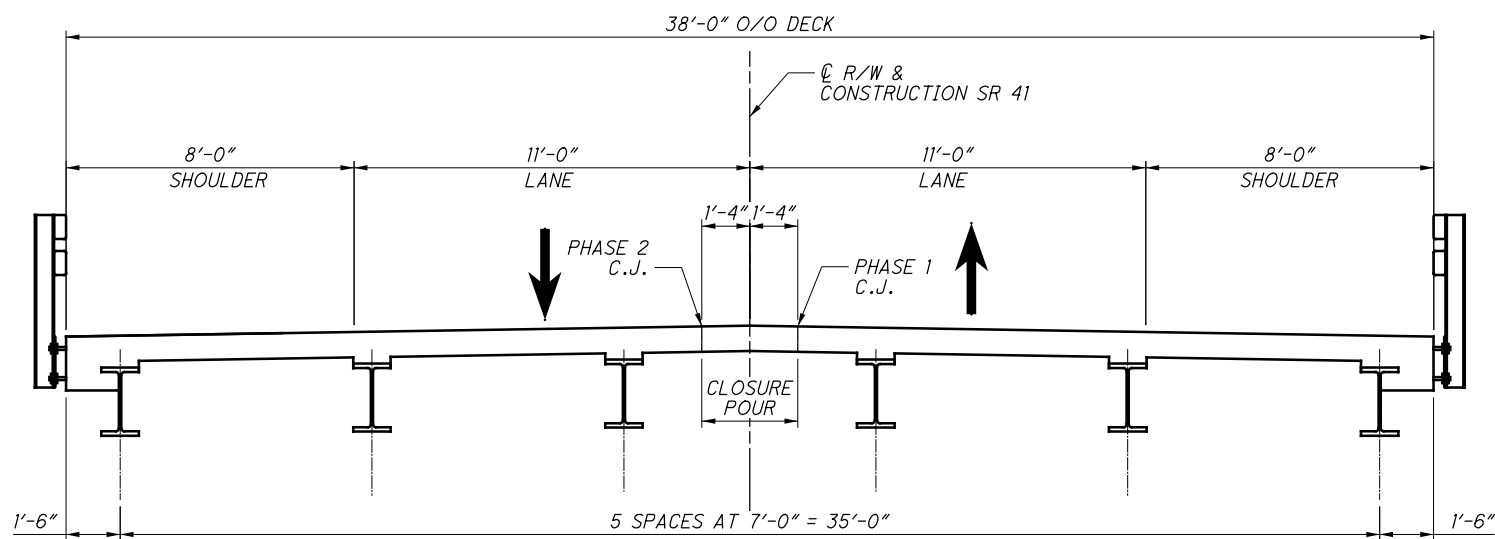
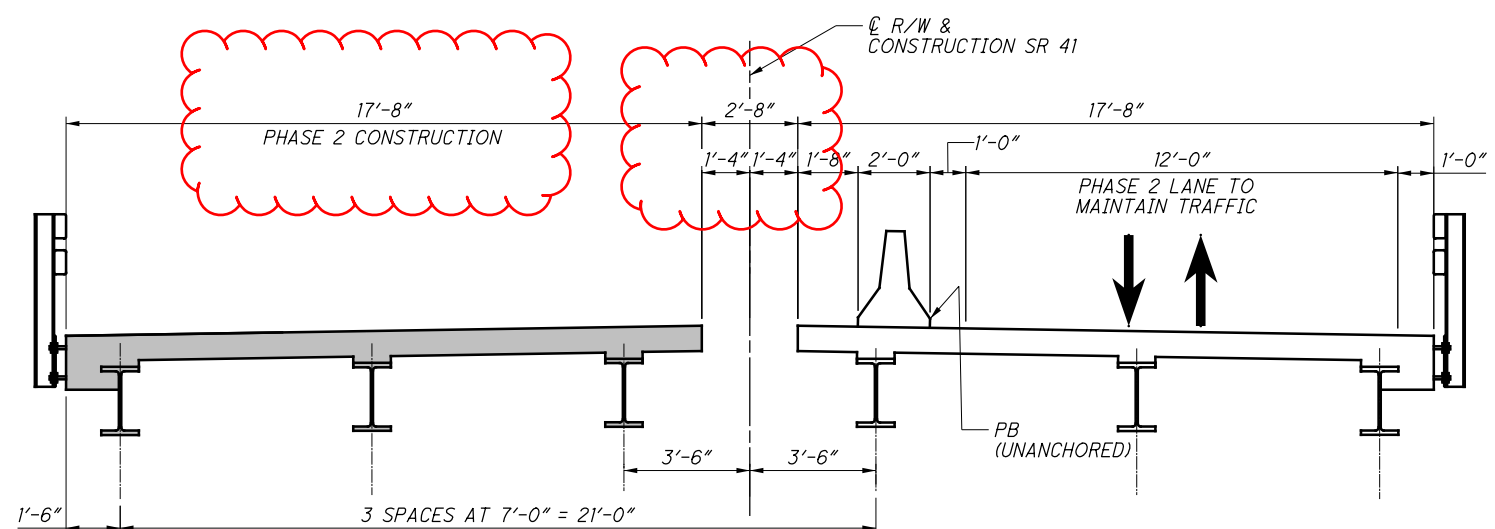
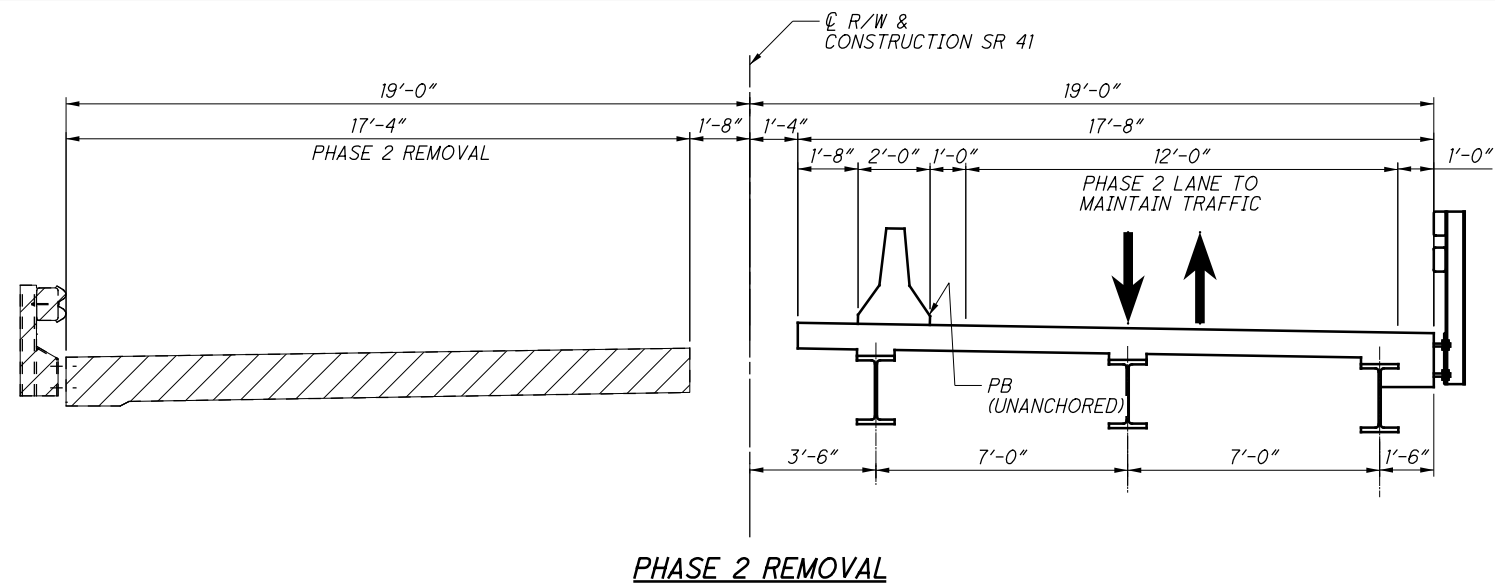
**CROSS SECTIONS  
 STA. 22+18.15 TO STA. 22+50.00**

**HIG-41-0.38**

20  
46

\* = CROSS SECTIONS CUT ALONG 30° SKEW.

O:\Transportation\Projects\ODOT\District 9\HIG041\_0040\100884\Design\Structures\HIG041\_0040C\Sheets\041\_0040CSC002.dgn 12/4/2020 9:32:44 AM odesimone



**PHASE 2 REMOVAL:**

1. INSTALL PORTABLE BARRIER ON PROPOSED STRUCTURE IN THE LOCATION SHOWN.
2. SHIFT TRAFFIC TO THE RIGHT SIDE OF THE BRIDGE AND MAINTAIN ONE-LANE, TWO-WAY TRAFFIC.
3. REMOVE THE LEFT PORTION OF THE EXISTING SUPERSTRUCTURE AND APPROACH SLABS TO THE LIMITS SHOWN.
4. REMOVE THE LEFT PORTION OF THE EXISTING SUBSTRUCTURES AS SHOWN IN THE PLANS.

**PHASE 2 CONSTRUCTION:**

1. MAINTAIN ONE-LANE, TWO-WAY TRAFFIC ON THE RIGHT SIDE OF THE BRIDGE AS SHOWN.
2. CONSTRUCT THE LEFT PORTIONS OF THE SUBSTRUCTURES TO THE LIMITS SHOWN IN THE PLANS.
3. CONSTRUCT THE REMAINDER OF THE SUPERSTRUCTURE, EXCEPT FOR THE DIAPHRAGMS BETWEEN BEAMS 3 AND 4 (CLOSURE POUR LOCATION). POUR THE PHASE 2 PORTION OF THE SUPERSTRUCTURE AND APPROACH SLABS. INSTALL DIAPHRAGMS BETWEEN BEAMS 3 AND 4 AND COMPLETE CLOSURE POUR.
4. REMOVE PB.

**NOTES:**

1. PAYMENT FOR PORTABLE CONCRETE BARRIER (PB) INCLUDED IN ROADWAY GENERAL SUMMARY.
2. FOR ADDITIONAL PORTABLE CONCRETE BARRIER DETAILS, SEE STANDARD DRAWING PCB-91 OR RM-4.2.

**LEGEND:**

- = LIMITS OF REMOVAL
- = NEW CONSTRUCTION

<b>HIG-41-0.38</b> PID No. 100884	<b>PART WIDTH CONSTRUCTION DETAILS - PHASE 2</b> BRIDGE NO. HIG-41-0040 SR 41 OVER STRAIGHT CREEK	DESIGNED EDW CHECKED AMT	DRAWN EDW REVISED	REVIEWED CCJ STRUCTURE FILE NUMBER 3600460	DATE 7/15/2020	DESIGN AGENCY <b>PRIMEV</b> 8415 Pulaski Place, Suite 300 Columbus Ohio 43240
8 / 23	31					
		46				

