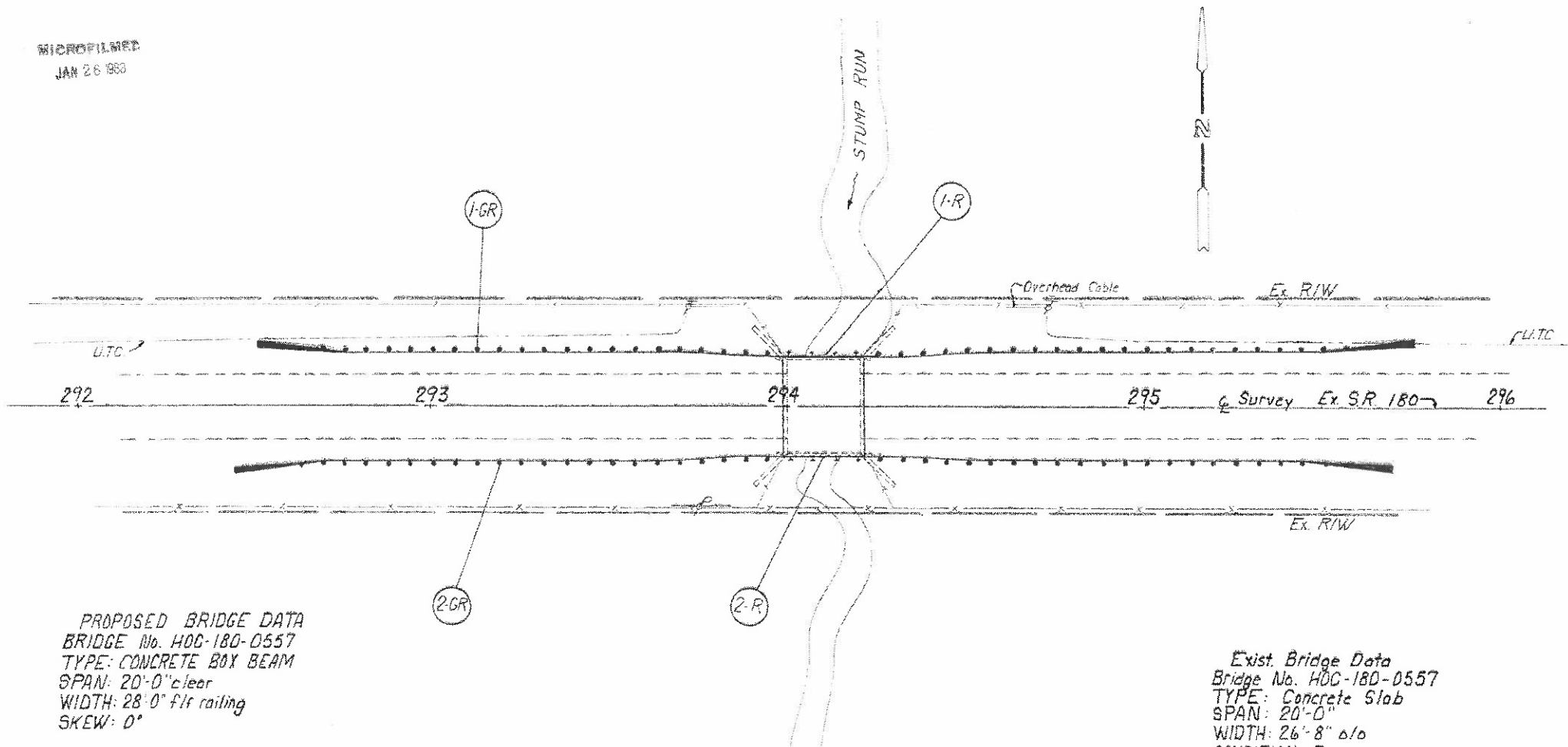


MICROFILMED
JAN 26 1983

BRIDGE REPAIR
PLAN NO BR-54-81

HOC-180-0557

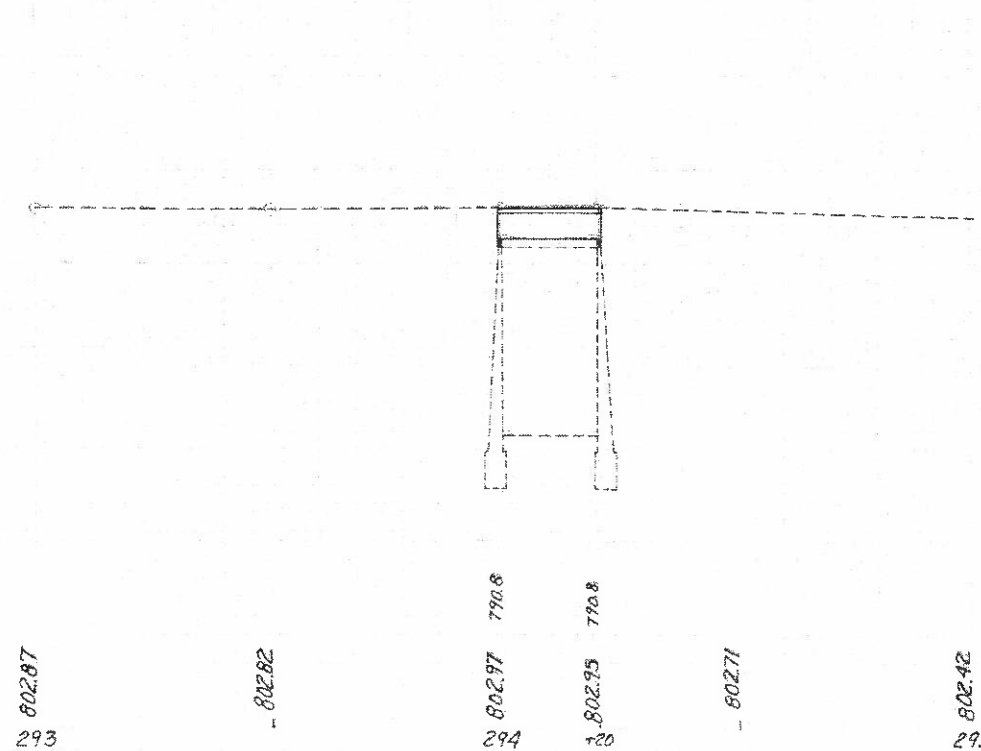
10
28



PROPOSED BRIDGE DATA
BRIDGE No. HOC-180-0557
TYPE: CONCRETE BOX BEAM
SPAN: 20'-0" clear
WIDTH: 28'-0" fit railing
SKEW: 0°

Exist. Bridge Data
Bridge No. HOC-180-0557
TYPE: Concrete Slab
SPAN: 20'-0"
WIDTH: 26'-8" o/a
CONDITION: Poor

BENCH MARK: Sq. Iron Pin in
Telephone Pole # 28 Lt. Sta.
293+72, Elev. 800.00



ROADWAY	202 Guardrail Removed Lin. Ft.	606 Concrete Type 5 Lin. Ft.	606 Bridge Type B Lin. Ft.	606 Anchor Type A Each	606 Temporary Guardrail Type A Each	606 Lin. Ft.
1-R 293+97 to 294+22 Lt. 25						
2-R 293+97 to 294+22 Rt. 25						
1-GR 292+50.58 to 293+75.58 Lt. 25		252.5	252.5	2	2	100
2-GR 292+44.33 to 293+69.33 Rt. 25		252.5	252.5	2	2	100

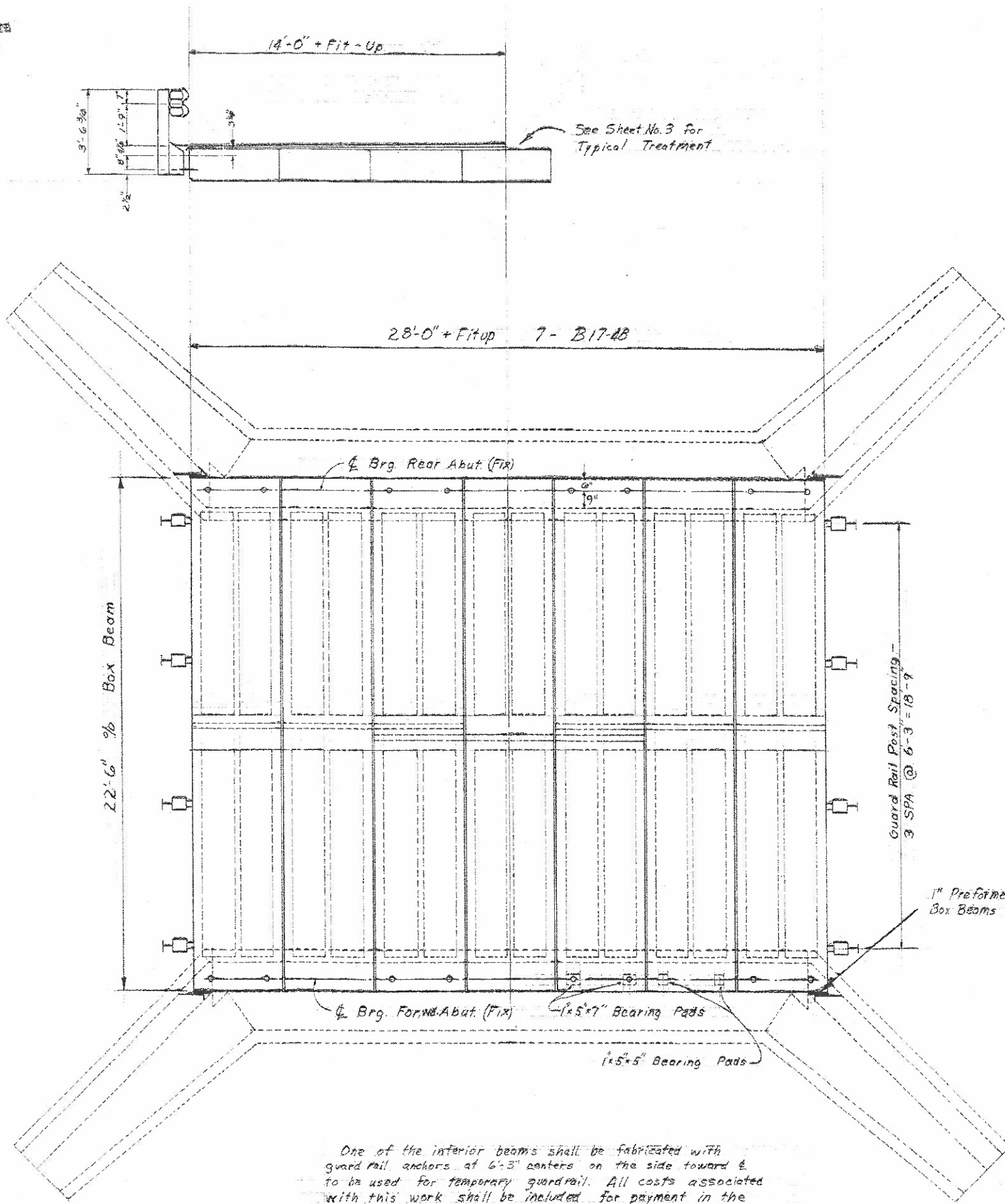
MICROFILMED
JAN 26 1989

FHWA REGION	STATE	PROJECT
5	OHIO	

19
23

HOC-180-0422-0557

PLAN NO. BR-36-81



CONCRETE REPAIR QUANTITIES

HOC-180-0422

Item 511-			
Rear Abutment -	4.23 C.Y.		
Forward Abutment -	10.07 C.Y.		
Total		14.30 C.Y.	
Pay Quantity -	+10%	1.43 *	15.73 C.Y.
Item 519- Patching			
Rear Abutment -	86.8 S.F.		
Forward Abutment -	45.5 S.F.		
Total		132.3 SF	
Pay Quantity -	+10%	13.2 *	145.5 SF

HOC-180-0557

Item 511			
Rear Abutment -	3.86 C.Y.		
Forward Abutment -	3.38 C.Y.		
Total		7.24 C.Y.	
Pay Quantity	+10%	.72 *	7.96 C.Y.
Item 519- Patching			
Rear Abutment -	63.3 S.F.		
Forward Abutment -	189.5 S.F.		
Total		252.8 SF	
Pay Quantity	+10%	25.3 *	278.1 SF

Place Concrete above Bridge Seat in Wing Walls after Box Beams are set.

Item 511 - 15.73 + 7.96 = 23.69 C.Y.
Item 519 - 145.5 + 278.1 = 423.6 SF

* 10% Added for variable dimensions

Hoc-180-0422 - Dowel Holes - 180 Each
Railing - 45 Lin Ft.
Hoc-180-0557 - Dowel Holes - 142 Each
Railing - 45 Lin Ft.

DESIGNED BY: PEK	CHECKED BY: J.P.S.
DATE: 3/11/81	DATE: 4-81

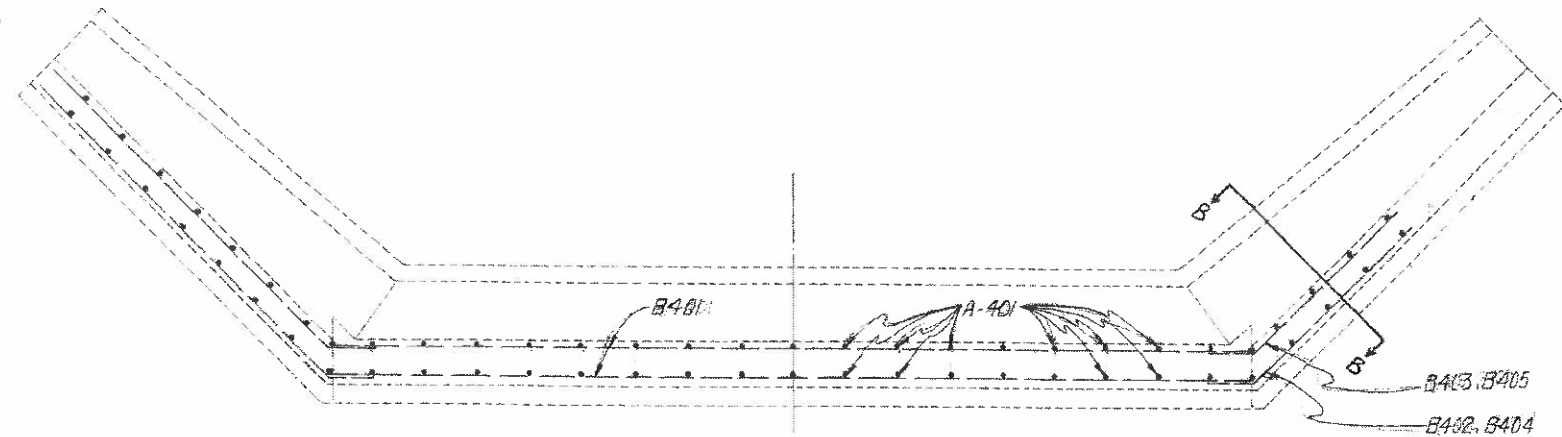
MICROFILMED
JAN 26 1966

FHWA REGION	STATE	PROJECT
5	OHIO	

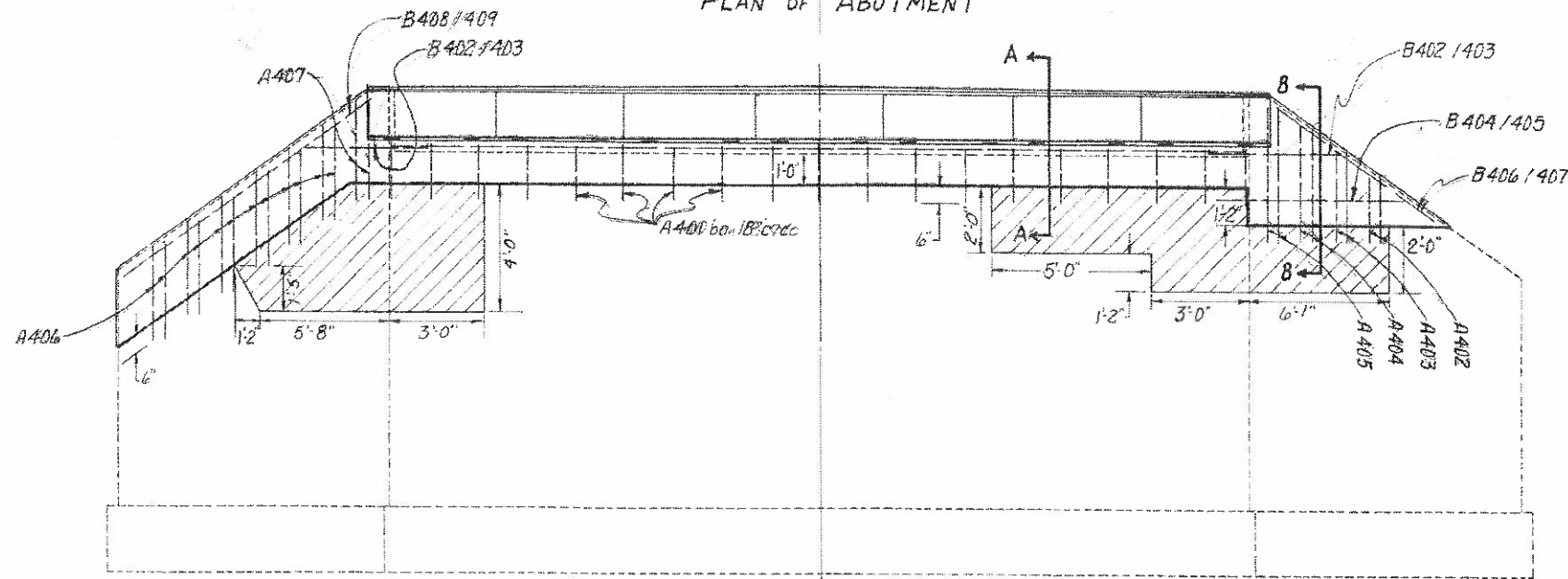
22
23

HOC-180-0557

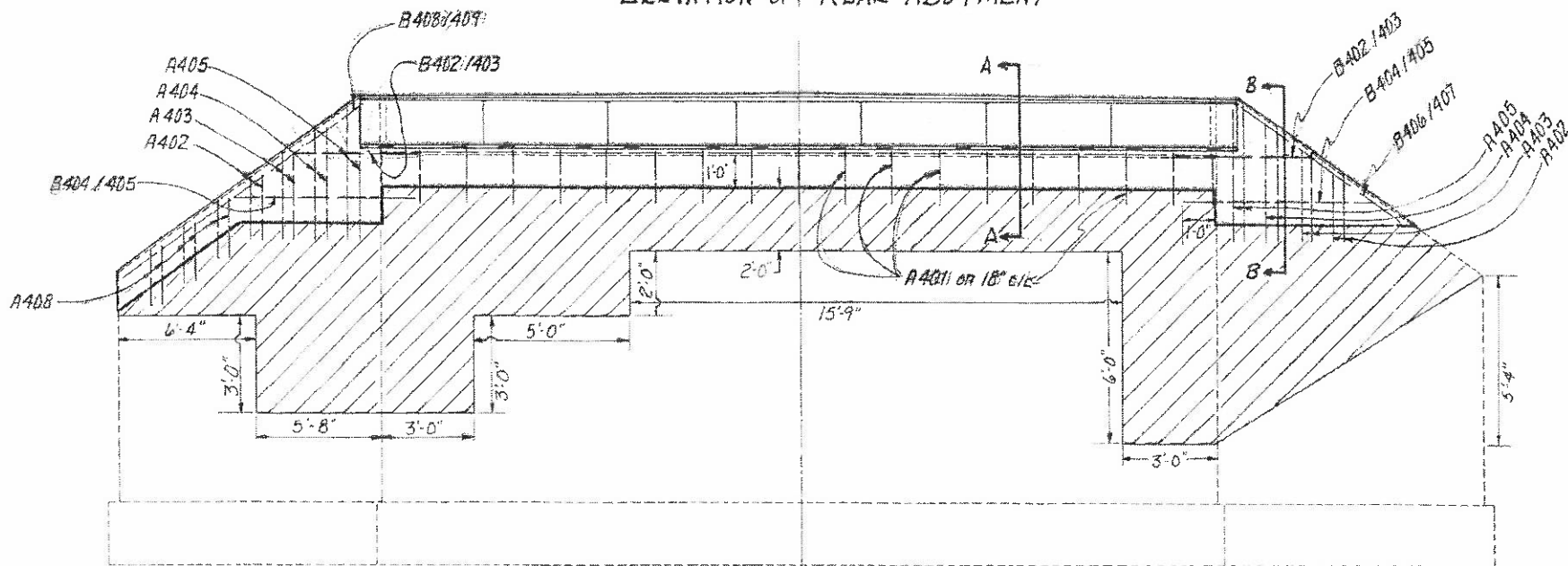
PLANS BR-36-B1



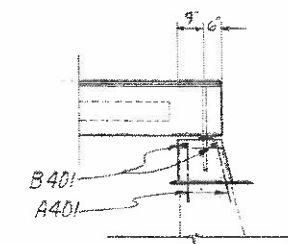
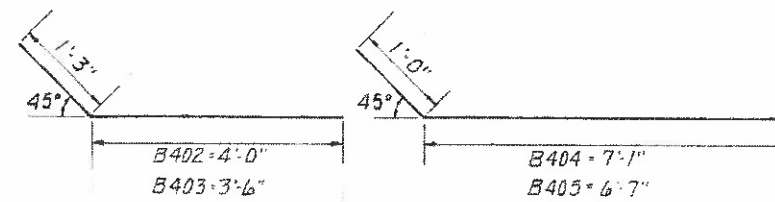
PLAN OF ABUTMENT



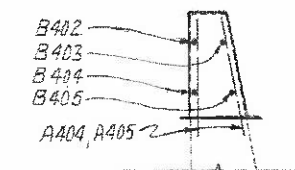
ELEVATION OF REAR ABUTMENT



ELEVATION OF FORWARD ABUTMENT



SECTION A-A



SECTION B-B

STEEL LIST

MARK	No.	LENGTH	WEIGHT	Shp	LOCATION
A401	76	1'-9"	89	S	Both
A402	6	1'-11"	8	↓	Both
A403	6	2'-7"	11	↓	Both
A404	6	3'-4"	14	↓	Both
A405	6	4'-3"	17	↓	Both
A406	12	2'-9"	22	↓	Rear Abut.
A407	2	2'-10"	4	↓	Rear Abut.
A408	6	1'-7"	7	S	Fwd. Abut.
B401	4	26'-3"	75*	S	Both
B402	4	5'-3"	14	B	↓
B403	4	4'-9"	13	B	↓
B404	3	8'-1"	16	B	↓
B405	3	7'-7"	15	B	↓
B406	2	8'-10"	12	S	↓
B407	2	8'-4"	11	S	↓
B408	2	14'-4"	19	S	↓
B409	2	13'-10"	19	S	Both
TOTAL					366*

*Includes an additional 1'-8" length to cut & splice for half width construction.

DESIGNED BY: PEH
CHECKED BY: JPD
DATE: 3/11/81 DATE: 4-81