

STATE OF OHIO DEPARTMENT OF TRANSPORTATION

HUR-20-16.35
LOR-20-0.00

CITY OF NORWALK
VILLAGE OF WAKEMAN
NORWALK TOWNSHIP
WAKEMAN TOWNSHIP
CAMDEN TOWNSHIP
PITTSFIELD TOWNSHIP
HURON COUNTY
LORAIN COUNTY

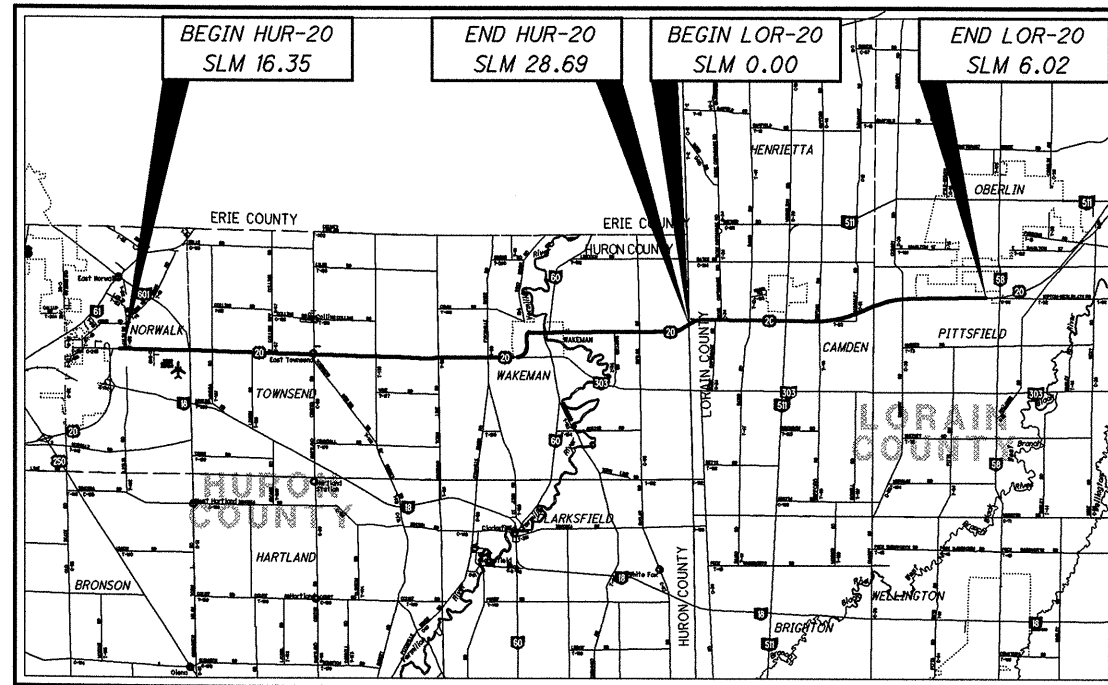
PROJECT DESCRIPTION

THIS PROJECT IS 18.36 MILES LONG AND WILL INCLUDE PAVEMENT PLANING, PAVEMENT REPAIR, SHOULDER REPAIR, RESURFACING WITH ASPHALT CONCRETE, PROFILE AND SUPERELEVATION CORRECTION IN WAKEMAN, ADDITION OF A LEFT TURN LANE AT WESTERN RESERVE SCHOOL, ADJUSTMENT OF CASTINGS WHERE NECESSARY, GUARDRAIL, PAVEMENT MARKINGS AND MINOR STRUCTURE REHABILITATION WORK.

PROJECT EARTH DISTURBED AREA: 2.3 ACRES
ESTIMATED CONTRACTOR EARTH DISTURBED AREA: 1.0 ACRES
NOTICE OF INTENT EARTH DISTURBED AREA: 4.9 ACRES

2005 SPECIFICATIONS

THE STANDARD SPECIFICATIONS OF THE STATE OF OHIO, DEPARTMENT OF TRANSPORTATION, INCLUDING CHANGES AND SUPPLEMENTAL SPECIFICATIONS LISTED IN THE PROPOSAL SHALL GOVERN THIS IMPROVEMENT.



LOCATION MAP

LATITUDE: N 41° 15' 17" LONGITUDE: W 82° 24' 6"

SCALE IN MILES



PORTION TO BE IMPROVED _____
INTERSTATE & DIVIDED HIGHWAY _____
UNDIVIDED STATE & FEDERAL ROUTES _____
OTHER ROADS _____

DESIGN DESIGNATION

SEE SHEET 2

NHS PROJECT _____ YES

DESIGN EXCEPTIONS

NONE

INDEX OF SHEETS:

TITLE	1	WAKEMAN MAIN STREET	
DESIGN DESIGNATION	2	PLAN & PROFILE	73
STRAIGHT LINE DIAGRAM	3	CROSS SECTIONS	74-76
GENERAL NOTES	4-7		
DROP OFFS IN WORK ZONES	8	DRIVEWAY	
MAILBOX FACILITIES	9	PLAN & PROFILE	77
GENERAL SUMMARY	10-12	CROSS SECTIONS	78-79
PAVEMENT & SHOULDER DATA	13-14	CULVERT LOR-20-0272	
TYPICAL SECTIONS	15-16	TYPICAL SECTIONS	80
GUARDRAIL GENERAL NOTES	17-18	GENERAL NOTES	81
ROADWAY SUB-SUMMARY	19	PLAN & PROFILE	82
ROADWAY SUB-SUMMARY	20-26	CROSS SECTION	83-85
CURB RAMPS	27-28	STRUCTURE PLAN & PROFILE	86
PARKING STOLL & PAV'T MARKING DETAILS	29-30	HEADWALL DETAIL	87
PAVEMENT MARKINGS & RPM SUB-SUMMARY	31	STRUCTURES	
WESTERN RESERVE SCHOOL		STRUCTURE SUMMARY	88
ROADWAY SUB-SUMMARY	32	STRUCTURE GENERAL NOTES	89
MAINTENANCE OF TRAFFIC	32A-32D	BRIDGE TREATMENT	90
TYPICAL SECTIONS	33	PLAN VIEW LOR-20-1774	91
PROJECT SITE PLAN	33A-33D	POLYMER MOD. EXPANSION JOINT SYS.	92
PLAN & PROFILE	34-37	PLAN VIEW LOR-20-2226	93
CROSS SECTIONS	38-48, 45A, 45B	PLAN VIEW LOR-20-2283	94
TRAFFIC CONTROL	49-52	PLAN VIEW LOR-20-2562	95
WAKEMAN CURVE		PLAN VIEW LOR-20-0217	96
TYPICAL SECTIONS	53-55	POLYMER MOD. EXPANSION JOINT SYS.	97
SUPERELEVATION TABLE	56	RIGHT OF WAY	98-107
PLANING DEPTH DETAILS	57		
PLAN & PROFILE	58-59		
CROSS SECTIONS	60-72		

ENGINEERS SEAL:

UNDERGROUND UTILITIES
CONTACT BOTH SERVICES
CALL TWO WORKING DAYS
BEFORE YOU DIG

CALL
1-800-362-2764
(TOLL FREE)

OHIO UTILITIES PROTECTION SERVICE
NON-MEMBERS
MUST BE CALLED DIRECTLY

OIL & GAS PRODUCERS PROTECTIVE
SERVICE CALL: **1-800-925-0988**

PLAN PREPARED BY:



ROADWAY, PAVEMENT & STRUCTURES	STANDARD CONSTRUCTION DRAWINGS						SUPPLEMENTAL SPECIFICATIONS
	BP-3.1	7/16/04	GR-4.2	1/19/07	MT-105.11	10/18/02	
	BP-4.1	7/16/04	GR-5.1	4/18/03			
	BP-5.1	7/28/00			TC-41.20	1/19/01	800 10-19-07
	BP-7.1	1/19/07			TC-42.20	7/16/04	802 4-15-05
			MH-1.1	7/19/02	TC-52.10	1/19/07	832 4-25-06
	CB-1.2	7/15/05			TC-52.20	1/19/07	848 4-15-05
			RM-1.1	4/21/06	TC-65.10	1/21/05	
	DM-4.3	7/19/02			TC-65.11	1/21/05	953 4-15-05
	DM-4.4	7/19/02	MT-96.10	4/19/02	TC-71.10	1/19/07	
			MT-96.20	4/19/02	TC-72.20	1/21/05	
	GR-1.1	7/16/04	MT-96.25	4/20/01	TC-73.10	1/19/01	
	GR-2.1	1/16/04	MT-97.10	9/05/06			
	GR-2.4	4/18/03	MT-97.12	9/05/06			
	GR-3.1	1/19/07	MT-99.20m	1/30/95			
	GR-3.4	1/20/06	MT-101.20	10/18/02			
GR-4.1	4/18/03	MT-105.10	10/18/02				

SIGNED: *Bruce Dalton*
DATE: 10-17-07

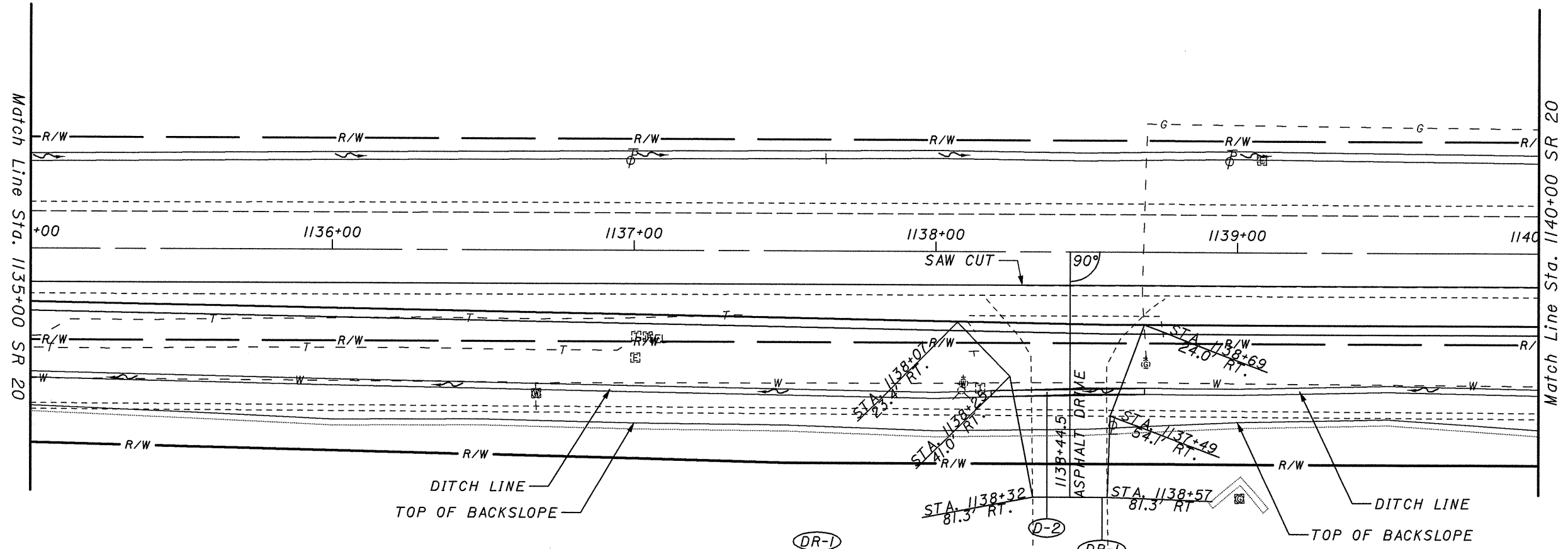
I HEREBY APPROVE THESE PLANS AND DECLARE THAT THE MAKING OF THIS IMPROVEMENT WILL NOT REQUIRE THE CLOSING TO TRAFFIC OF THE HIGHWAY AND THAT PROVISIONS FOR THE MAINTENANCE AND SAFETY OF TRAFFIC WILL BE AS SET FORTH ON THE PLANS AND ESTIMATES.

APPROVED: *John Hart*
DATE: 10/18/07 DISTRICT DEPUTY DIRECTOR

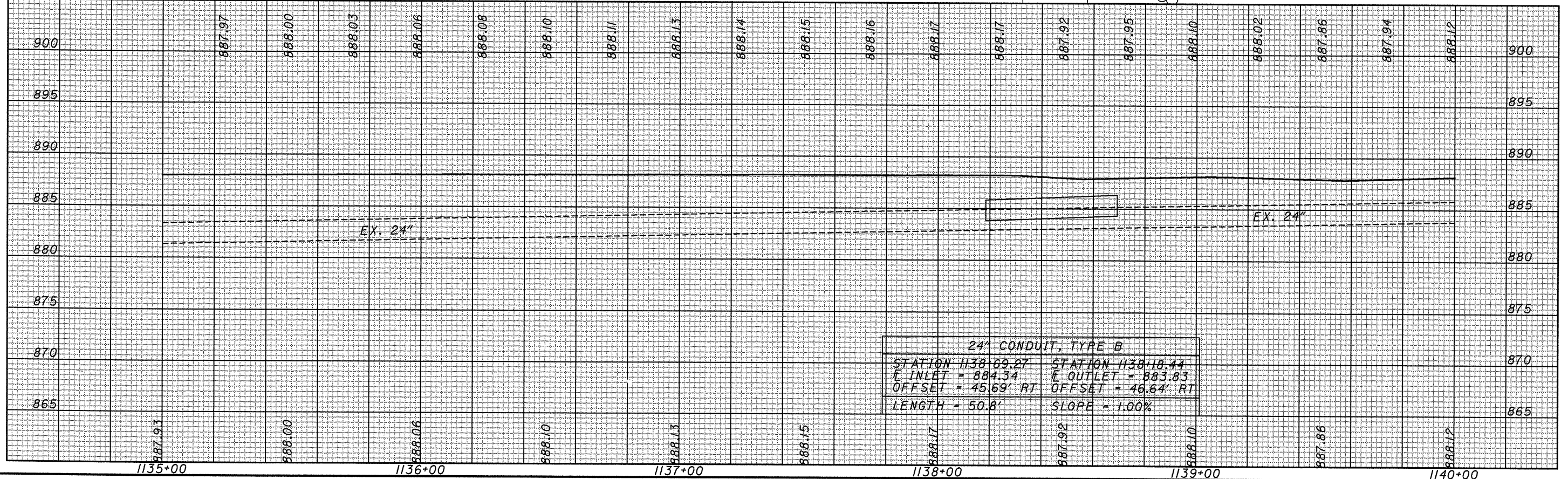
APPROVED: _____
DATE: _____ DIRECTOR, DEPARTMENT OF TRANSPORTATION

FEDERAL PROJECT NO. **E040(593)**
PID NO. **77284**
CONSTRUCTION PROJECT NO. **NONE**
RAILROAD INVOLVEMENT **NONE**
HUR-20-16.35
LOR-20-0.00

DESIGN FILE: I:\projects\77284\77284GT001.dgn
WORKSTATION: mr0bins1 DATE: 10/17/2007



(DR-1)
EXCAVATION INCLUDED ON THE
CROSS SECTION SHEETS.
SURFACE COURSE INCLUDED
ON THE PAVEMENT DATA SHEET.



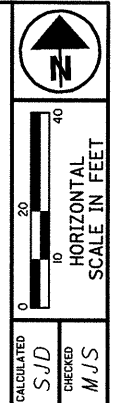
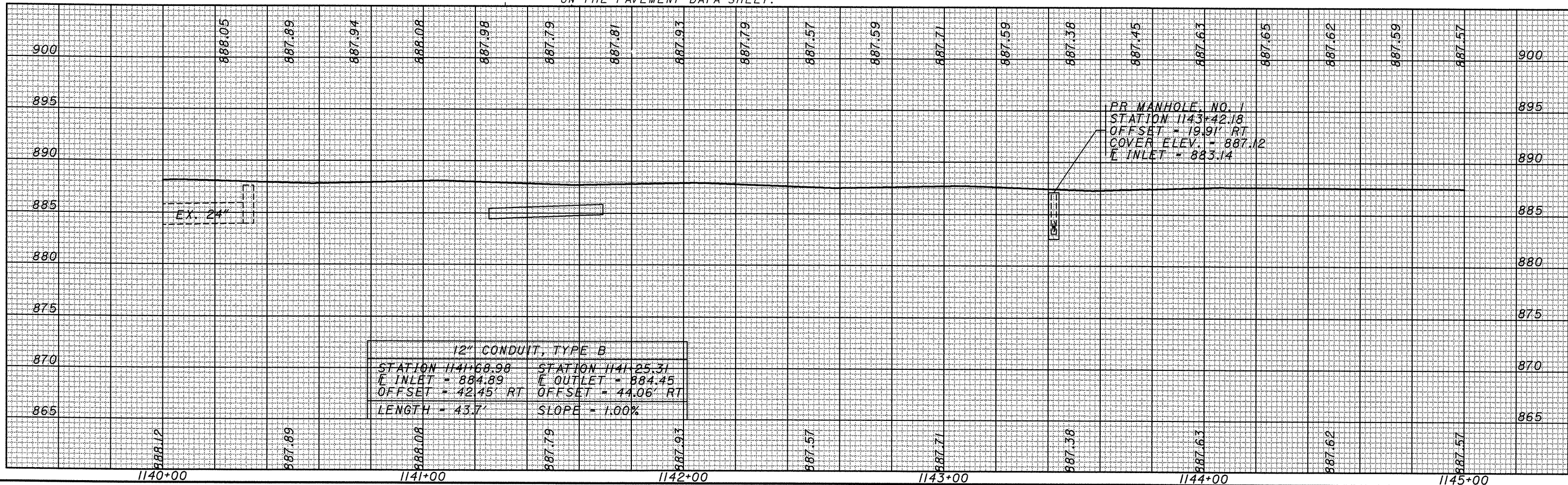
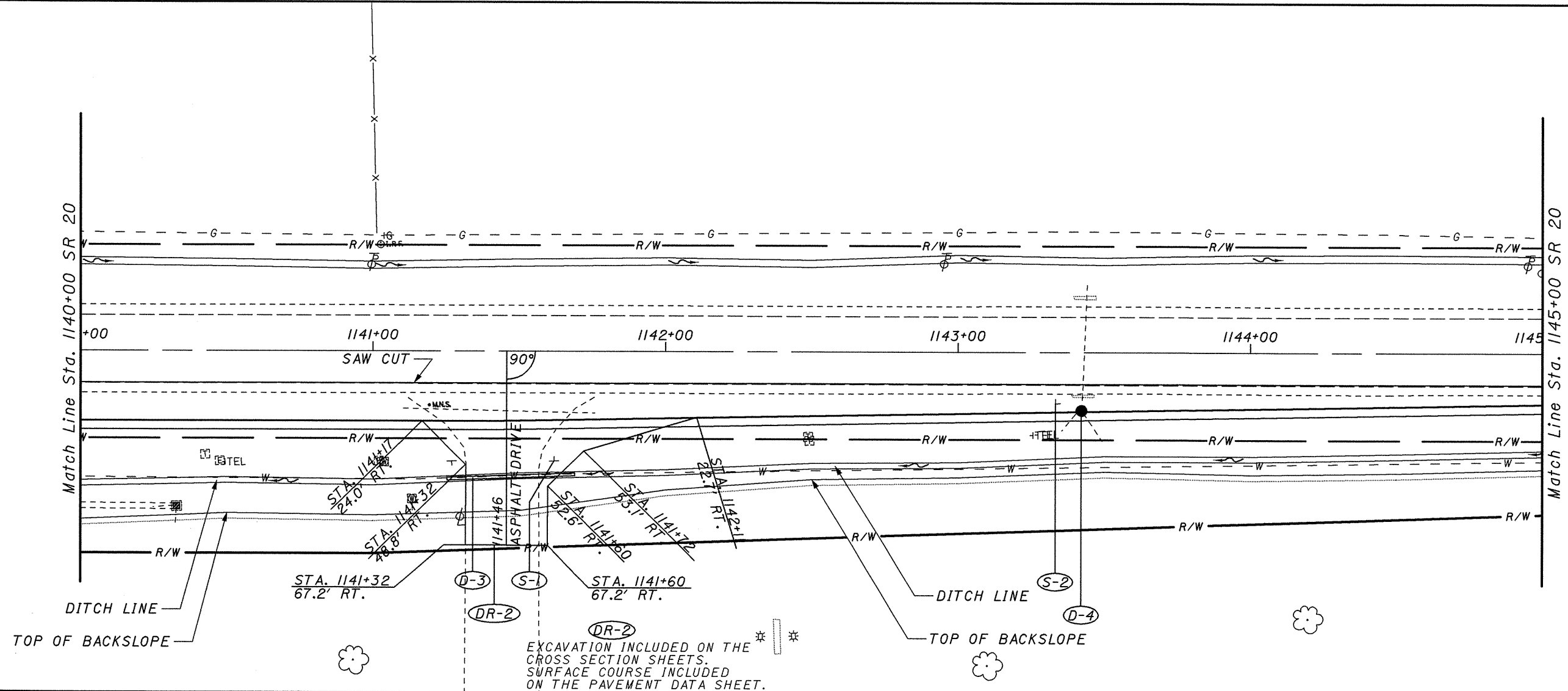
CALCULATED S.J.D.
CHECKED M.J.S.

PLAN AND PROFILE
STA. 1135+00 - STA. 1140+00

HUR-20-16.35
LOR-20-0.00

35
107

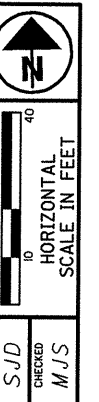
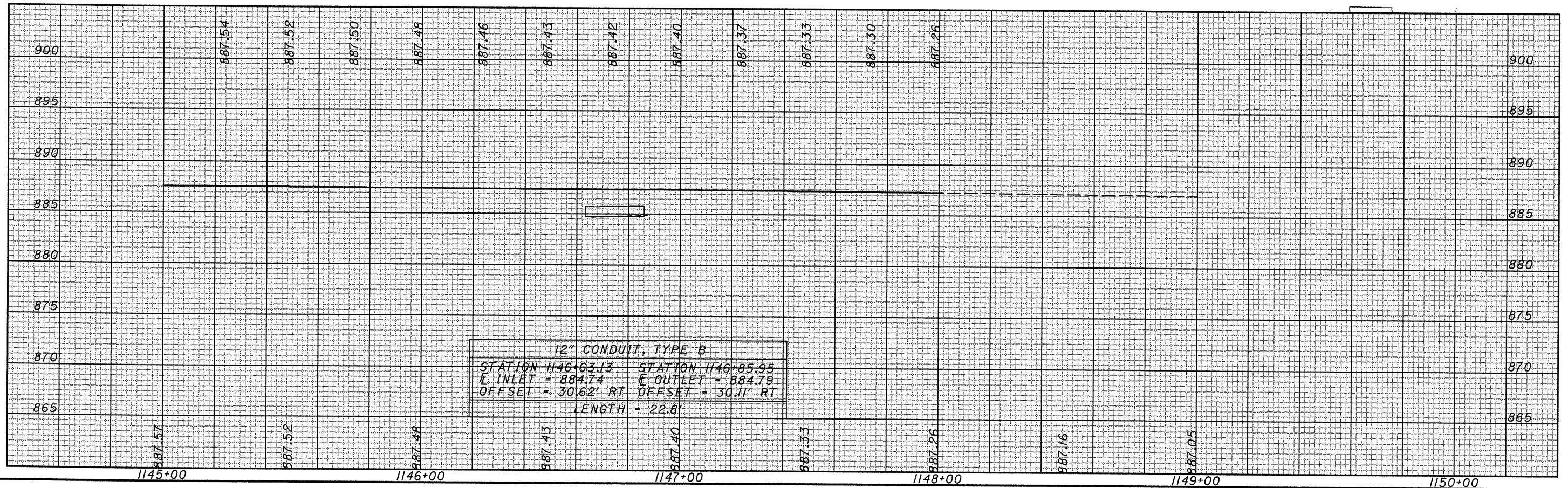
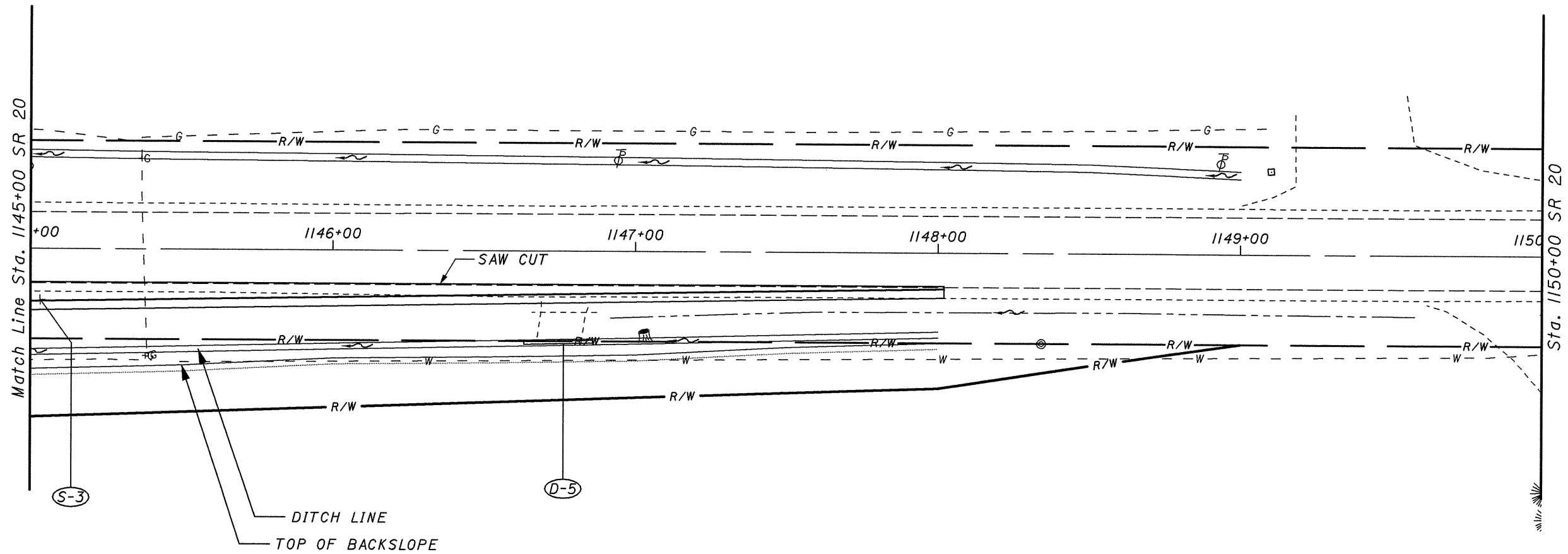
DESIGNER: I:\projects\7284\7284CPI00_b3.dgn
 DATE: 10/10/2007
 WORKSTATION: mshad



CALCULATED SJD
 CHECKED MJS
 PLAN AND PROFILE
 STA. 1140+00 - STA. 1145+00

HUR-20-16.35
 LOR-20-0.00

I:\projects\7284\7284GPI00_b4.dgn
 DATE: 10/10/2007
 DWG: 10/10/2007

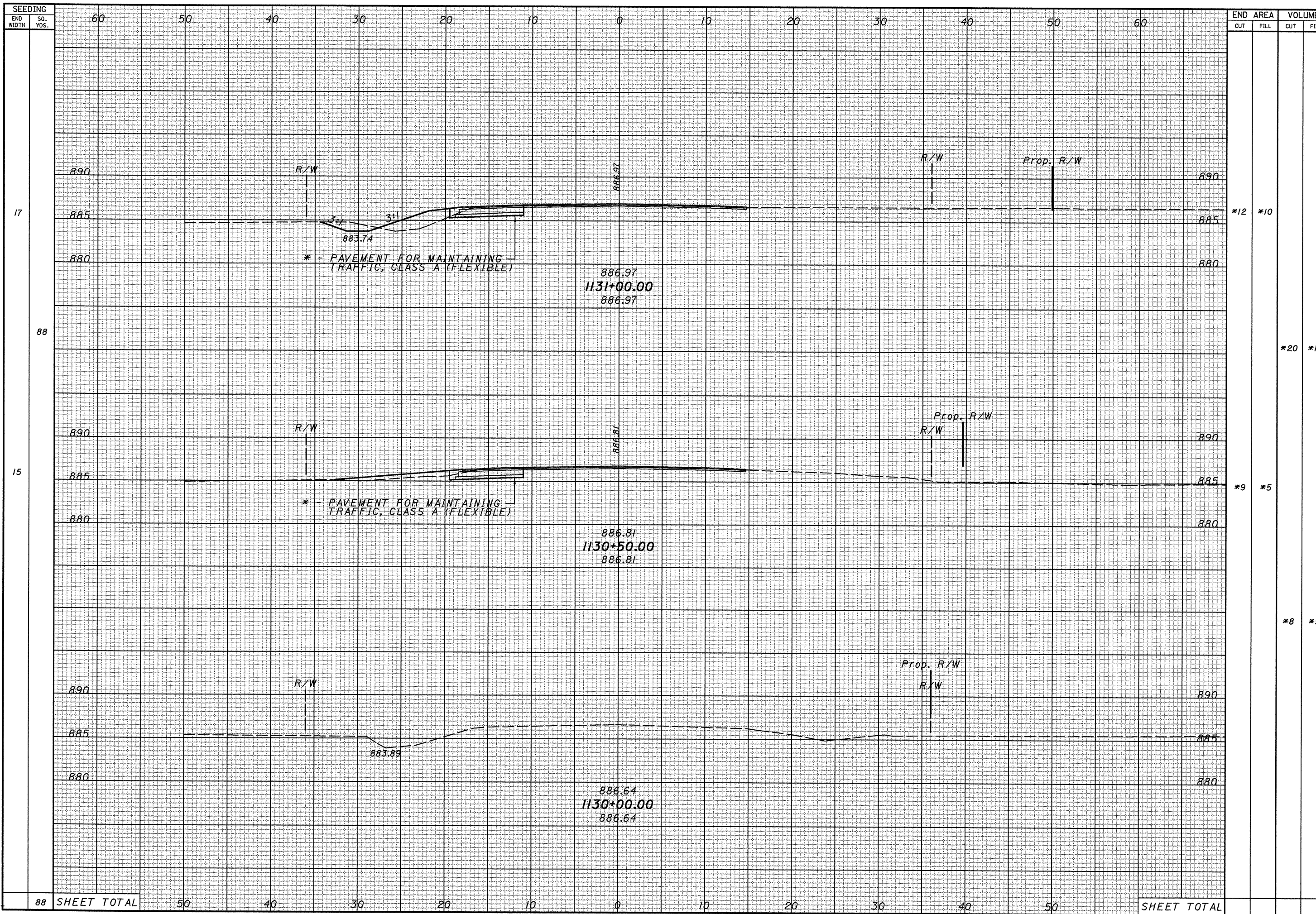


CALCULATED SJD
 CHECKED MJS

PLAN AND PROFILE
STA. 1145+00 - STA 1149+00

HUR-20-16.35
LOR-20-0.00

DESIGNER: I:\projects\77284\77284XS100_B.dgn
 DATE: 10/19/2007
 DRAWN BY: [Signature]

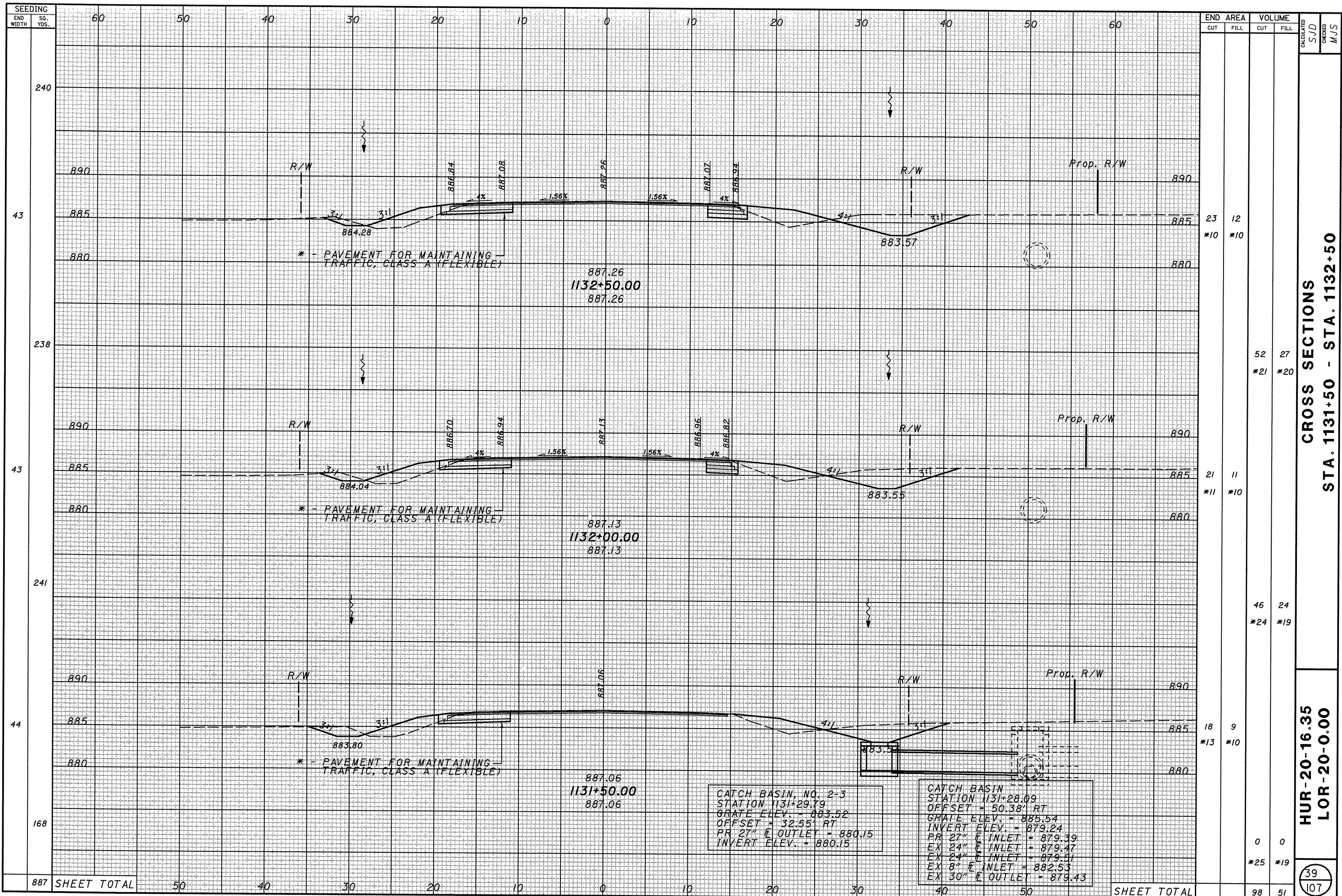


END	AREA		VOLUME	
	CUT	FILL	CUT	FILL
17	*12	*10		
88		*20	*14	
15	*9	*5		
		*8	*5	
88	SHEET TOTAL		SHEET TOTAL	

CROSS SECTIONS
 STA. 1130+00 - STA. 1131+00

HUR-20-16.35
 LOR-20-0.00

I:\projects\77284\77284XS100.B.dgn
 DATE: 10/10/2007
 DWGNO: 107
 WORKSHEETNO: 39



SEEDING	END WIDTH		VOLUME		CALCULATED	CHECKED	MJS
	CUT	FILL	CUT	FILL			
240							
43	23	12					
238			52	27			
43	21	11					
241			46	24			
44	18	9					
168			0	0			
887	98	51					

CROSS SECTIONS
 STA. 1131+50 - STA. 1132+50

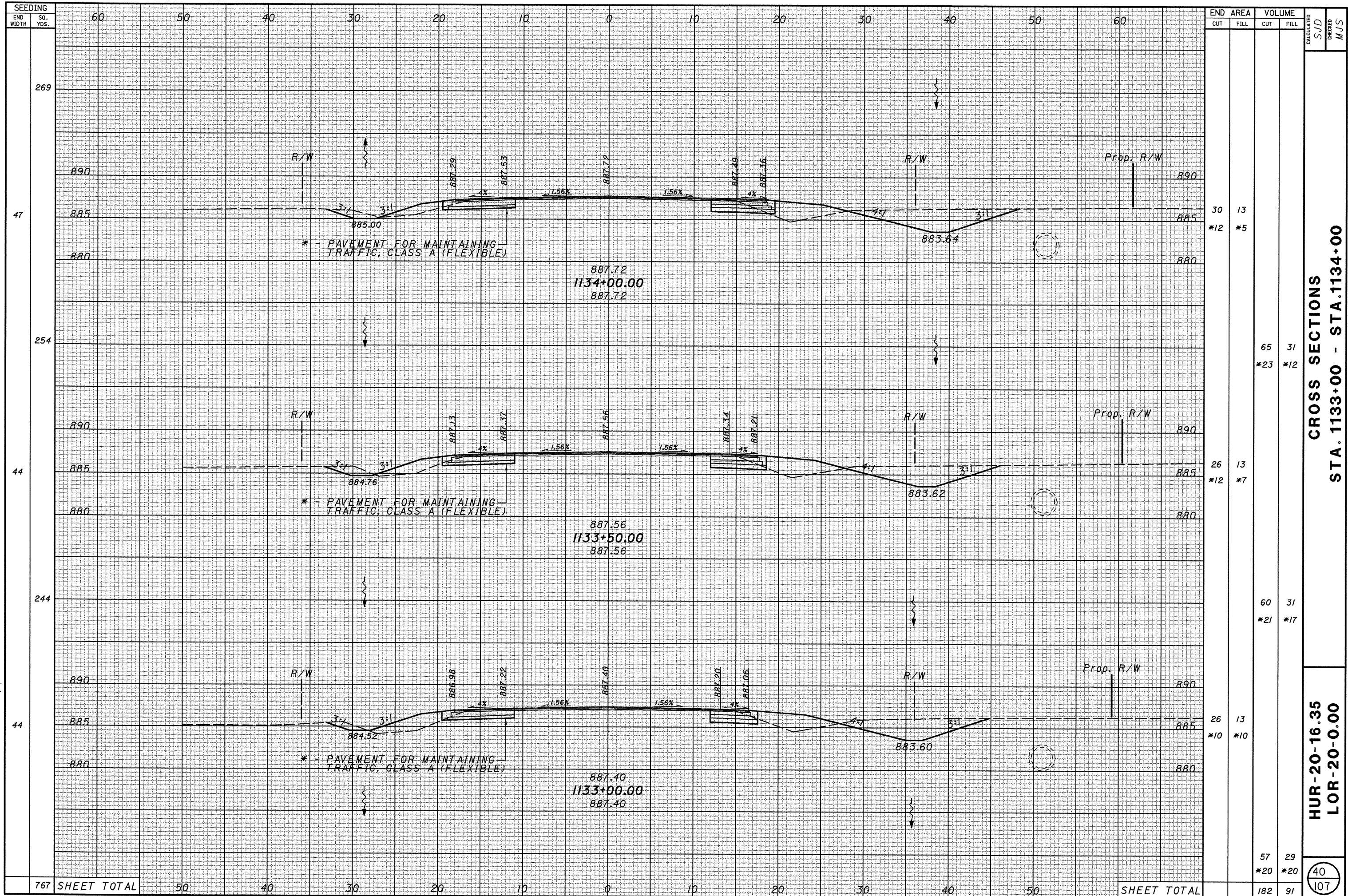
HUR-20-16.35
 LOR-20-0.00

39
 107

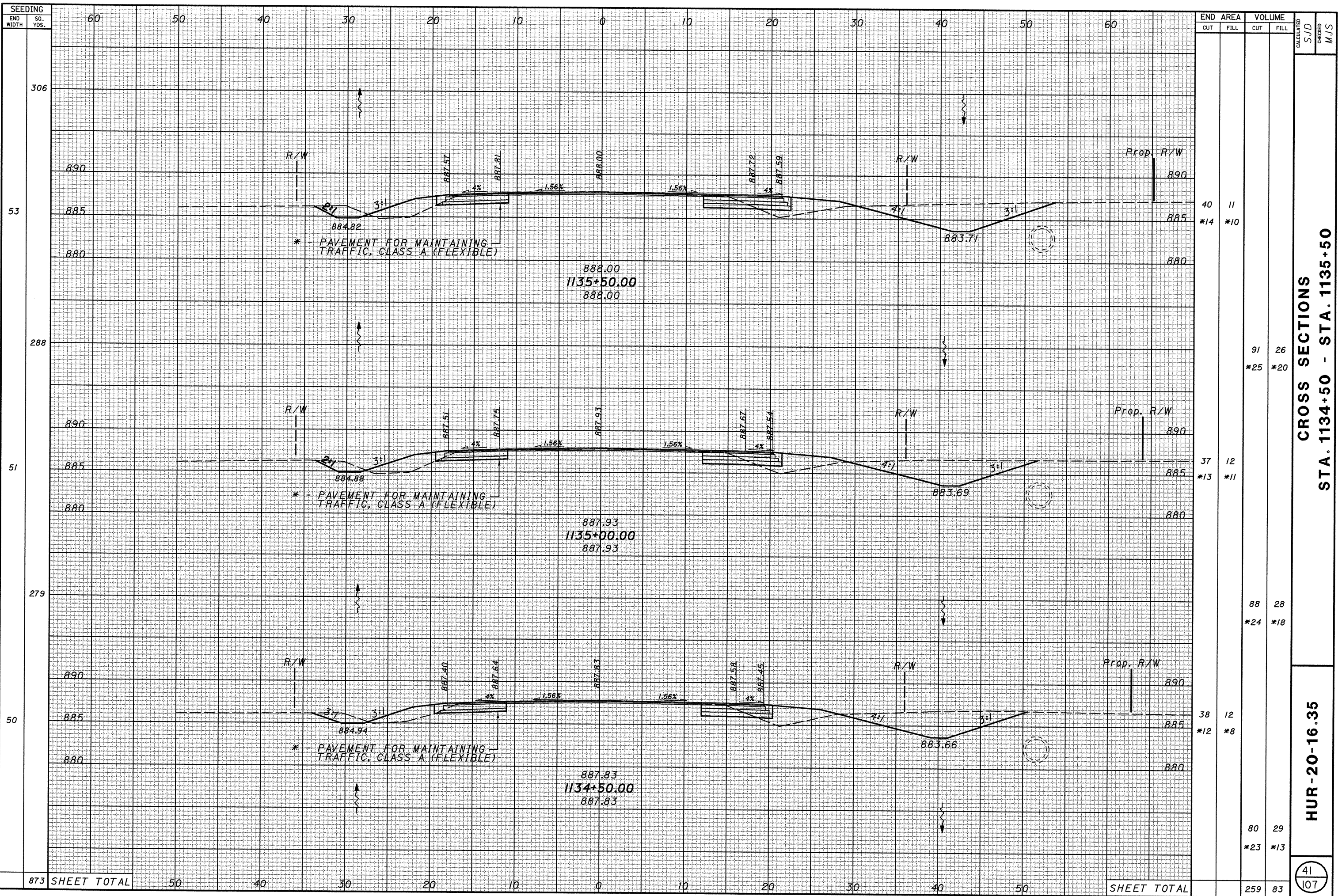
D:\projects\7284\7284XS100_B.dgn

DATE 10/19/2007

WORKSHEET NO. 1



I:\projects\7284\7284XS100_B.dgn
 2D.PLC 10/10/2007
 mshah1

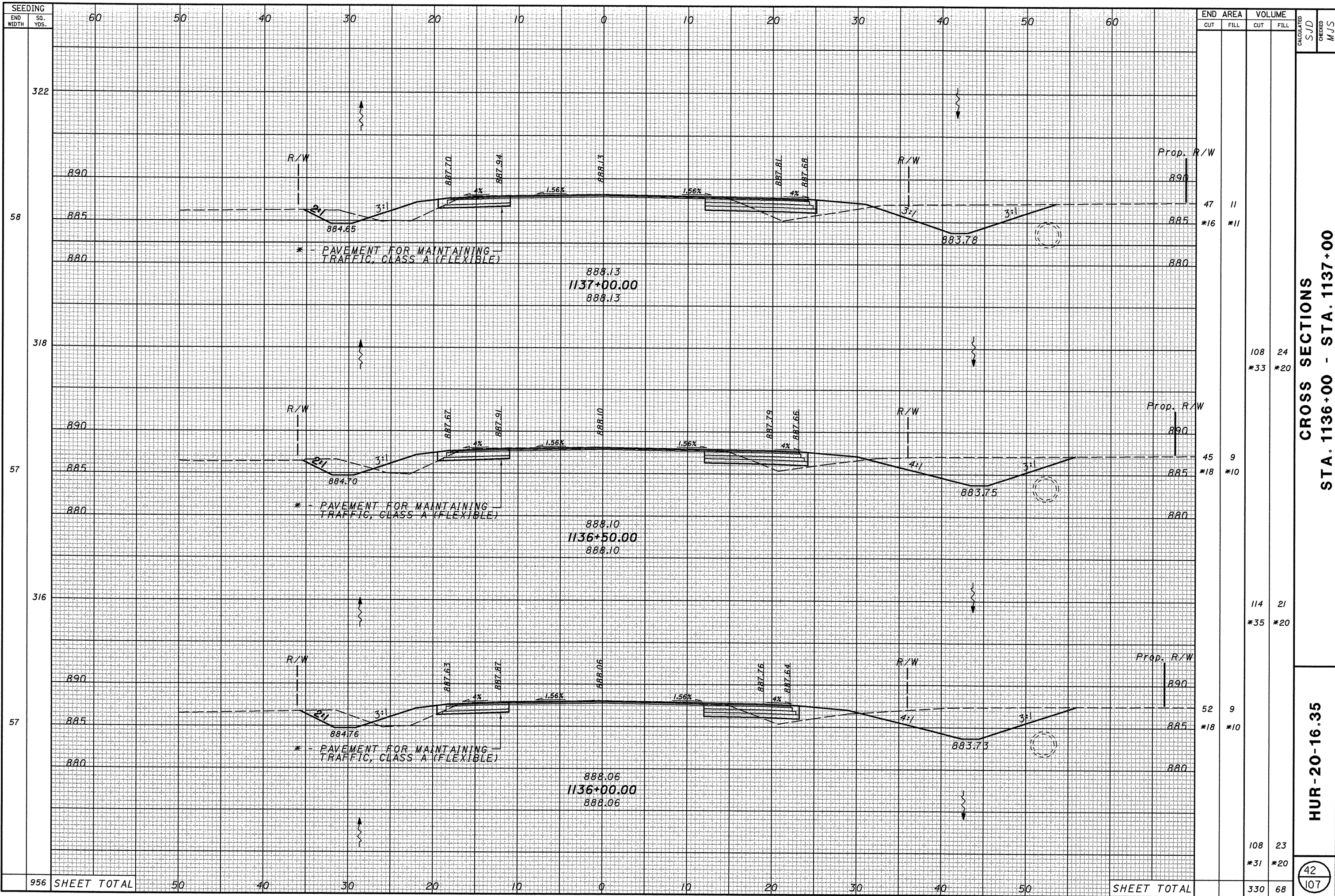


CROSS SECTIONS
STA. 1134+50 - STA. 1135+50

HUR-20-16.35

41
107

I:\projects\7284\7284XS100_B.dgn
 DATE: 10/10/2007
 DWG: 7284XS100_B.dgn
 PLOT: 10/10/2007



SEEDING	END WIDTH																						
	60	50	40	30	20	10	0	10	20	30	40	50	60										
322																							
58	890												890										
	885												885										
	880												880										
318																							
57	890												890										
	885												885										
	880												880										
316																							
57	890												890										
	885												885										
	880												880										
956	SHEET TOTAL												50	40	30	20	10	0	10	20	30	40	50

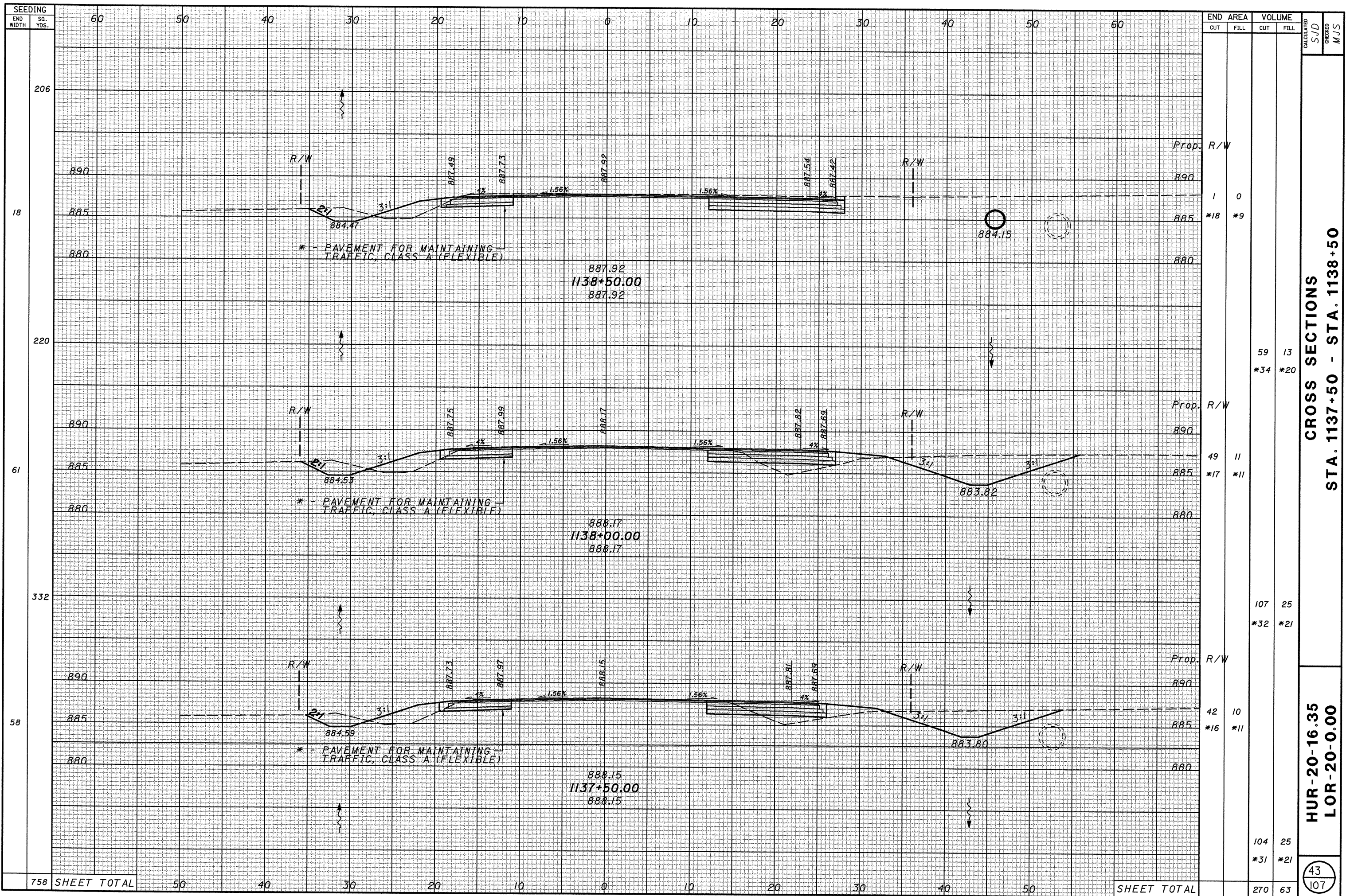
END	AREA		VOLUME		CALCULATED	SJD	CHECKED	MJS
	CUT	FILL	CUT	FILL				
47	11							
*16	*11							
108	24							
*33	*20							
45	9							
*18	*10							
114	21							
*35	*20							
52	9							
*18	*10							
108	23							
*31	*20							
SHEET TOTAL		330	68					

CROSS SECTIONS
 STA. 1136+00 - STA. 1137+00

HUR-20-16.35

42
 107

I:\projects\7284\7284XS100.B.dgn
 D:\JC 10/10/07
 10/10/07

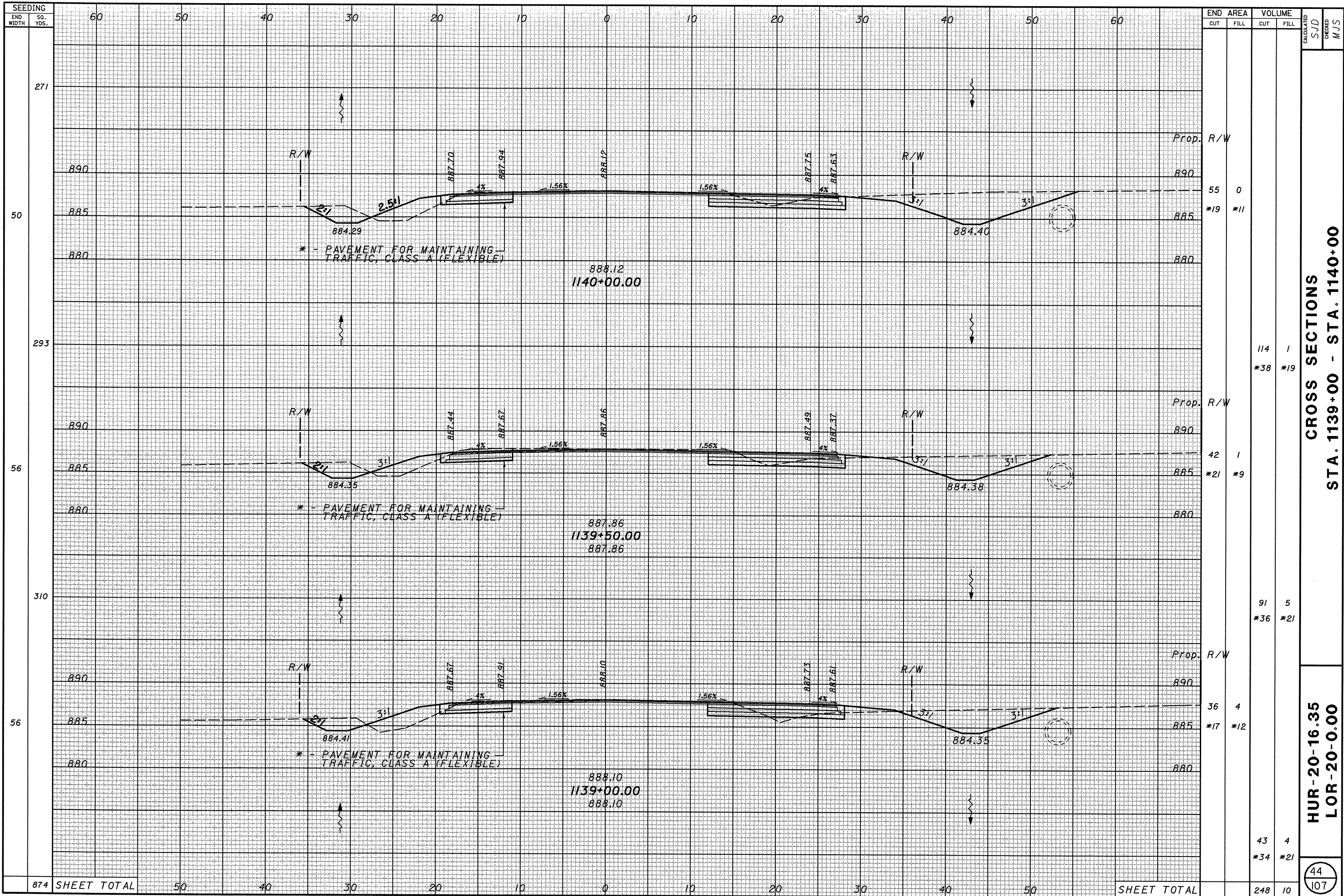


SEEDING	END WIDTH	SQ. YDS.	END AREA		VOLUME		CALCULATED SJD	CHECKED MJS										
			CUT	FILL	CUT	FILL												
206																		
18																		
220																		
61																		
332																		
58																		
758	SHEET TOTAL		50	40	30	20	10	0	10	20	30	40	50	SHEET TOTAL	270	63	43	107

CROSS SECTIONS
 STA. 1137+50 - STA. 1138+50

HUR-20-16.35
 LOR-20-0.00

I:\projects\77284\77284XS100.B.dgn
 DATE: 10/10/2007
 mod/ma

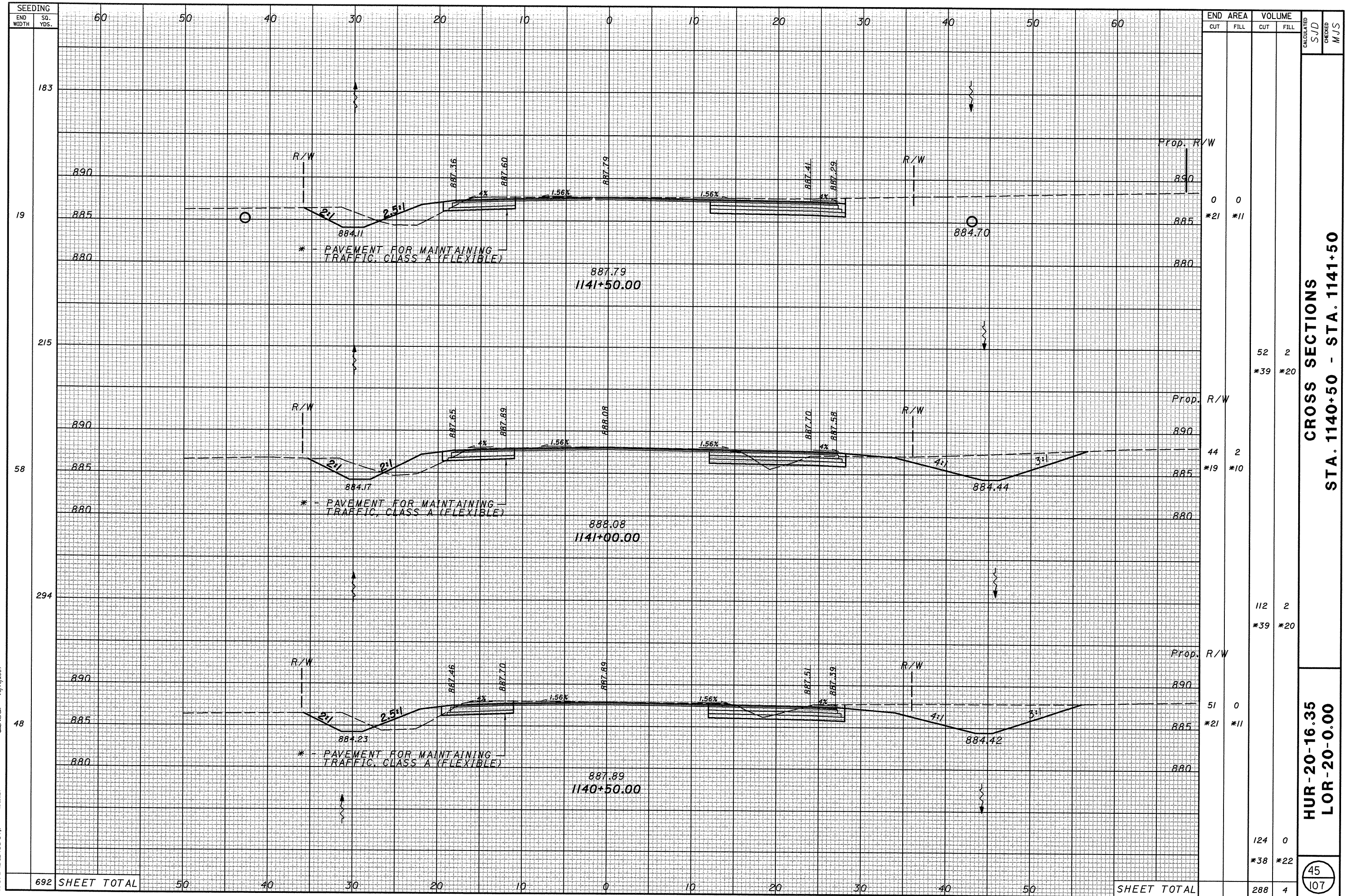


END WIDTH	SEEDING	AREA		VOLUME		CALCULATED SJD	CHECKED MJS									
		CUT	FILL	CUT	FILL											
60	60															
50	50															
40	40															
30	30															
20	20															
10	10															
0	0															
10	10															
20	20															
30	30															
40	40															
50	50															
60	60															
SHEET TOTAL		50	40	30	20	10	0	10	20	30	40	50	60	SHEET TOTAL	248	10

CROSS SECTIONS
 STA. 1139+00 - STA. 1140+00

HUR-20-16.35
 LOR-20-0.00

I:\projects\77284\77284XS100_B.dgn
 DWG: 10/10/2007
 mod1



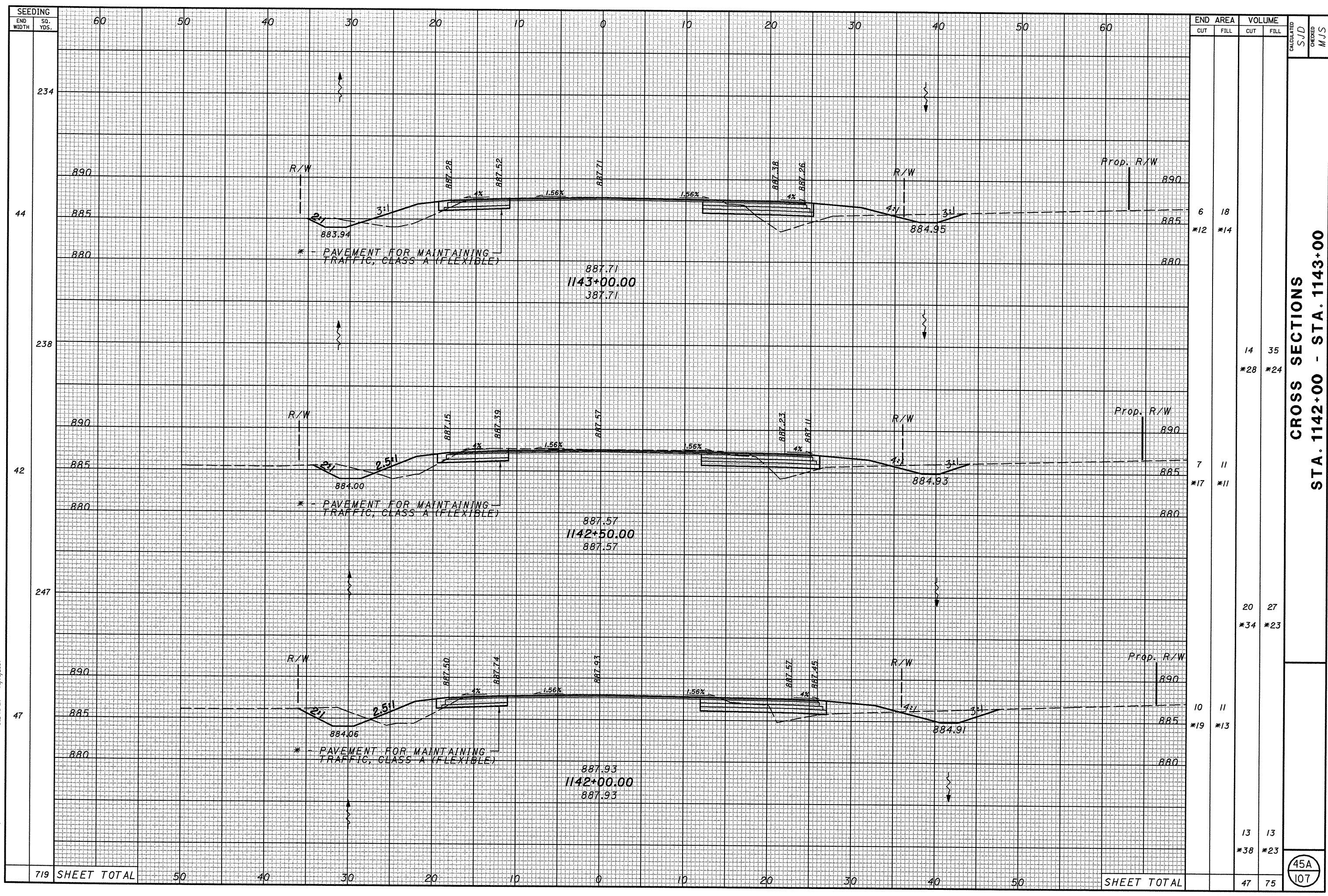
SEEDING END WIDTH	SO. YDS.	END AREA		VOLUME		CALCULATED SJD	CHECKED MJS
		CUT	FILL	CUT	FILL		
183							
19		0	0	*21	*11		
215		52	2	*39	*20		
58		44	2	*19	*10		
294		112	2	*39	*20		
48		51	0	*21	*11		
692	SHEET TOTAL	288	4	*38	*22		

CROSS SECTIONS
 STA. 1140+50 - STA. 1141+50

HUR-20-16.35
 LOR-20-0.00

45
 107

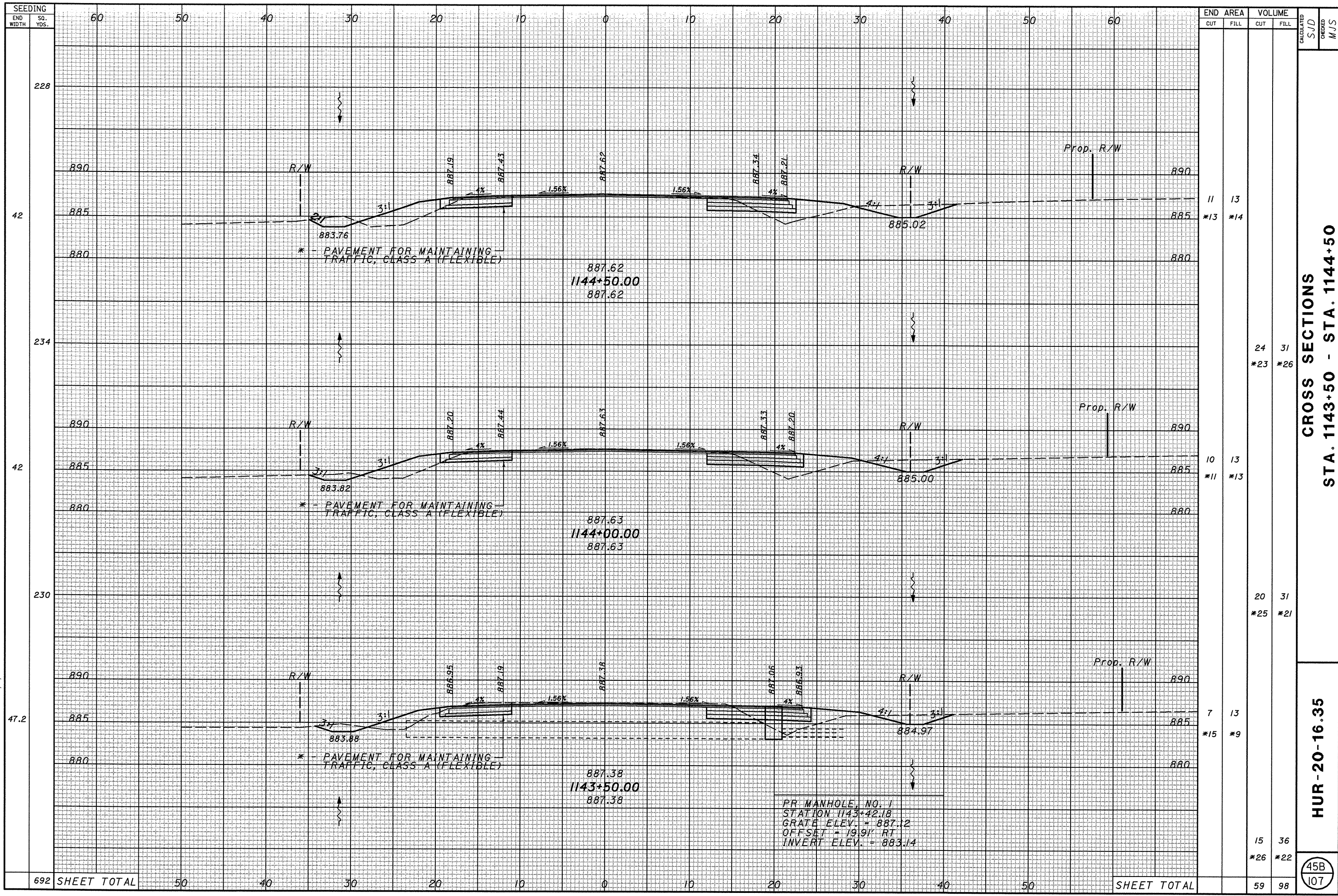
I:\projects\77284\77284XS100_B.dgn
 DATE: 10/10/2007
 DWG: 77284XS100_B.dgn



END STA.	AREA		VOLUME		CALCULATED SJD	CHECKED MJS
	CUT	FILL	CUT	FILL		
1143+00.00	6	18	14	35	*12	*14
1142+50.00	7	11	20	27	*17	*11
1142+00.00	10	11	13	13	*19	*13
SHEET TOTAL	23	40	47	75	*38	*23

CROSS SECTIONS
STA. 1142+00 - STA. 1143+00

i:\projects\7284\7284XS100_B.dgn
 DWG: 10/10/2007
 DWG USER: JLD

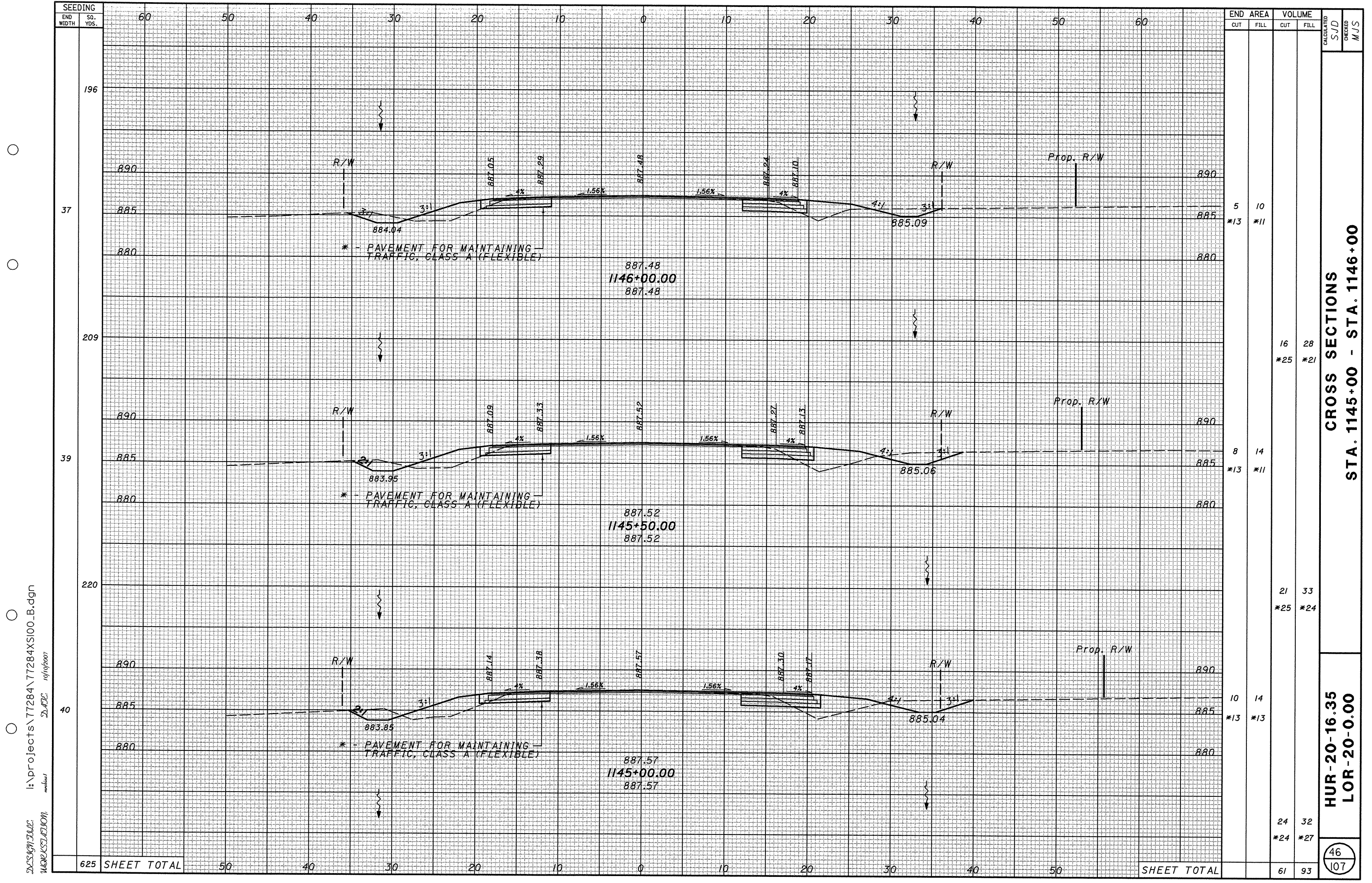


END WIDTH	SEEDING SQ. YDS.	END AREA		VOLUME		CALCULATED SJD	CHECKED MJS										
		CUT	FILL	CUT	FILL												
60																	
50																	
40																	
30																	
20																	
10																	
0																	
10																	
20																	
30																	
40																	
50																	
60																	
SHEET TOTAL		50	40	30	20	10	0	10	20	30	40	50	SHEET TOTAL	59	98		

CROSS SECTIONS
 STA. 1143+50 - STA. 1144+50

HUR-20-16.35

45B
 107



SEEDING		STATION												END AREA		VOLUME		
END WIDTH	SO. YDS.	60	50	40	30	20	10	0	10	20	30	40	50	60	CUT	FILL	CUT	FILL
196																		
37															5	10		
															*13	*11		
209																	16	28
																	*25	*21
39																	8	14
																	*13	*11
220																	21	33
																	*25	*24
40																	10	14
																	*13	*13
625	SHEET TOTAL		50	40	30	20	10	0	10	20	30	40	50				24	32
																	*24	*27
																	61	93

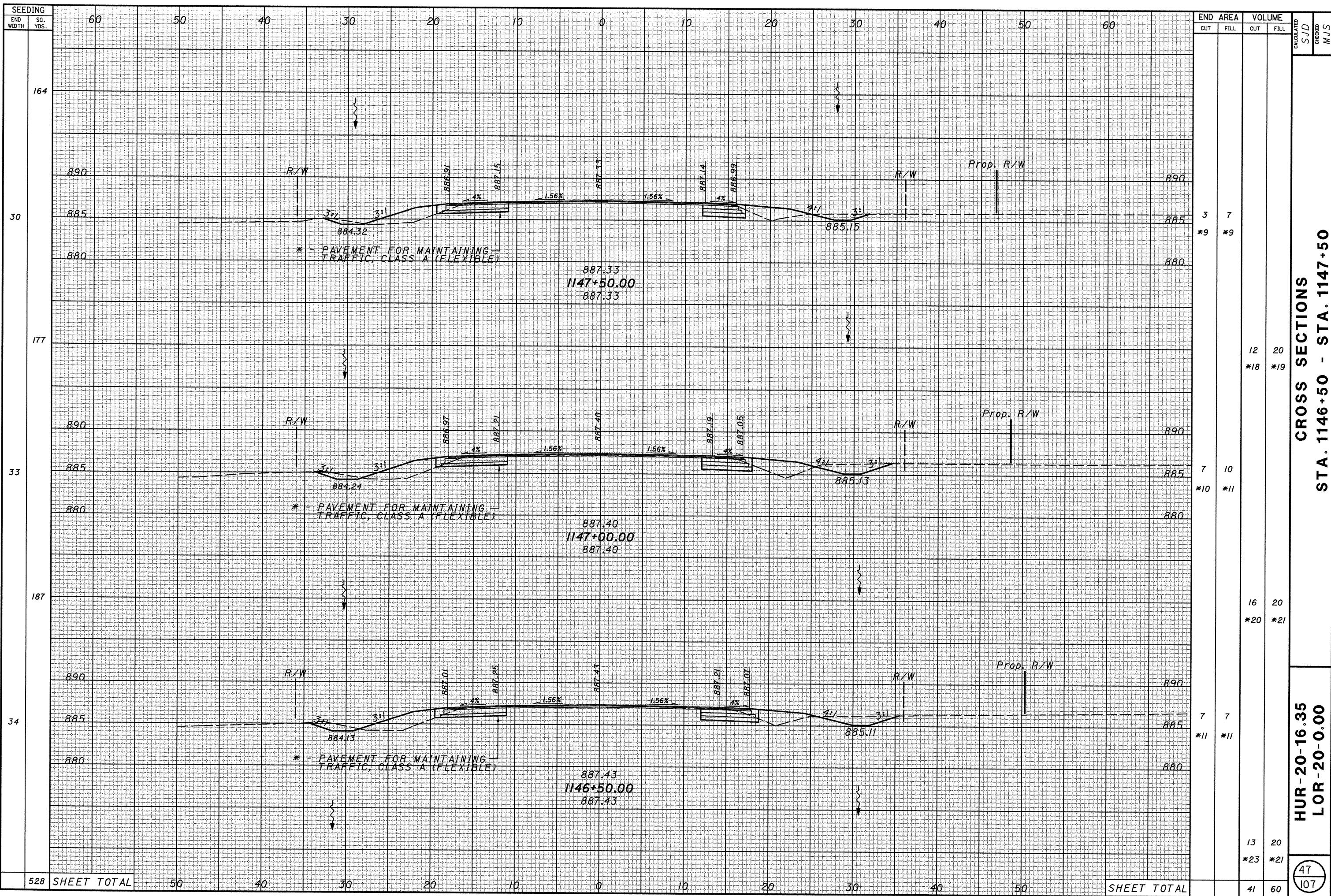
CROSS SECTIONS
STA. 1145+00 - STA. 1146+00

HUR-20-16.35
LOR-20-0.00

46
107

I:\projects\77284\77284XS100_B.dgn
10/10/2007
S:\PJC
M:\PJC

I:\Projects\7284\7284XS100_B.dgn
 DATE: 10/10/2007
 WORKSHEET:



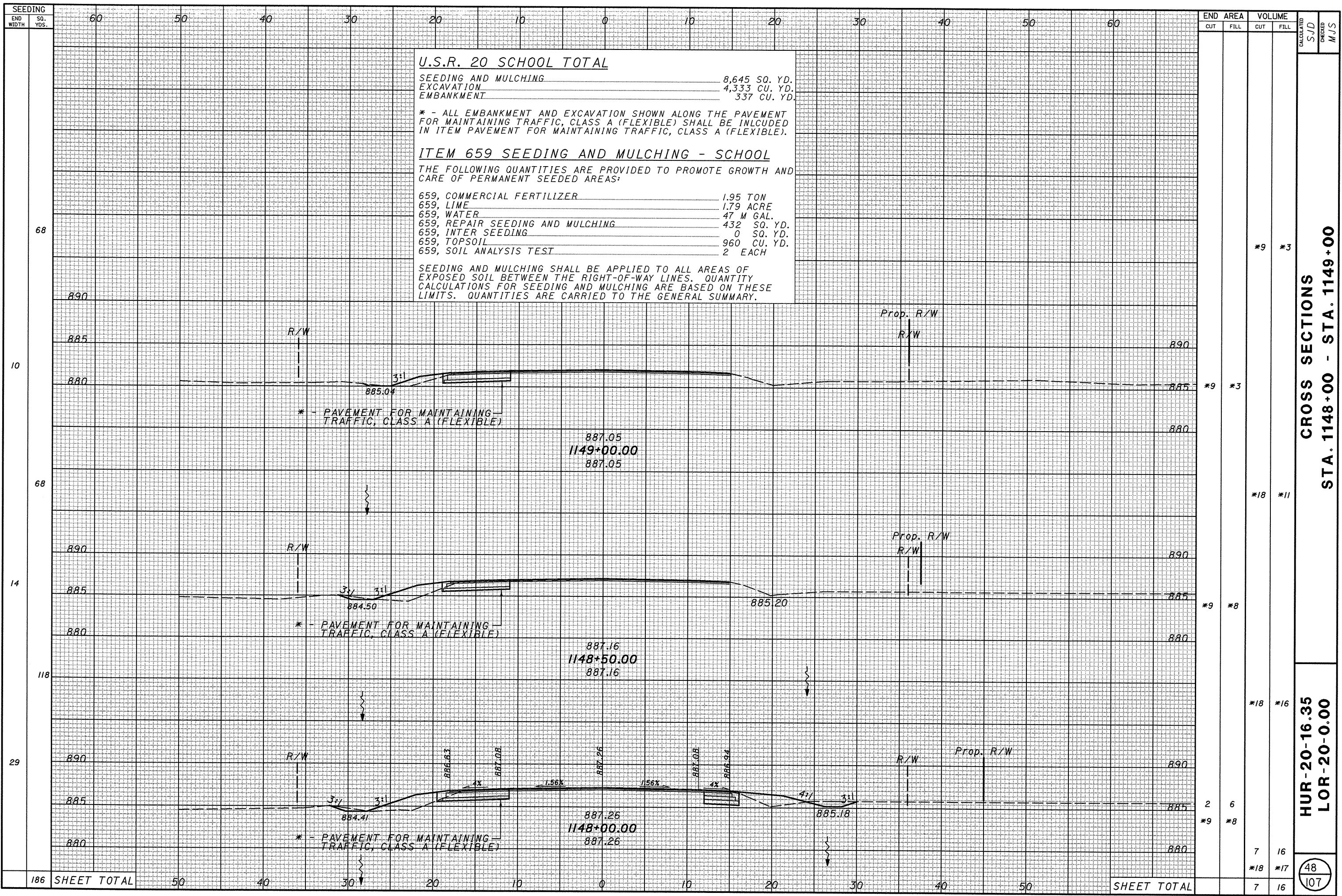
SEEDING	END WIDTH	SO. YDS.	END AREA		VOLUME		CALCULATED SJD	CHECKED MJS
			CUT	FILL	CUT	FILL		
164	60	30	3	7	*9	*9		
177	60	33	7	10	*10	*11		
187	60	34	7	7	*11	*11		
528	SHEET TOTAL		13	20	*23	*21		
			41	60				

CROSS SECTIONS
STA. 1146+50 - STA. 1147+50

HUR-20-16.35
LOR-20-0.00

47
 107

I:\Projects\71284\71284XS100_B.dgn
 DWG 10/10/2007
 DWG 10/10/2007



CROSS SECTIONS
 STA. 1148+00 - STA. 1149+00

HUR-20-16.35
 LOR-20-0.00

48
 107