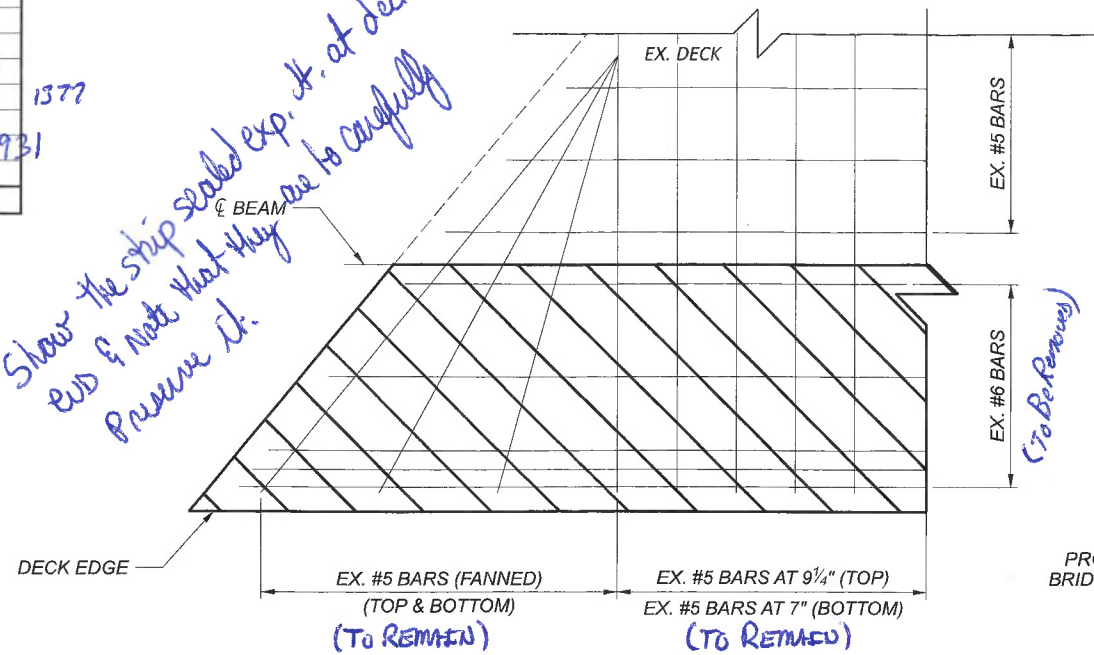
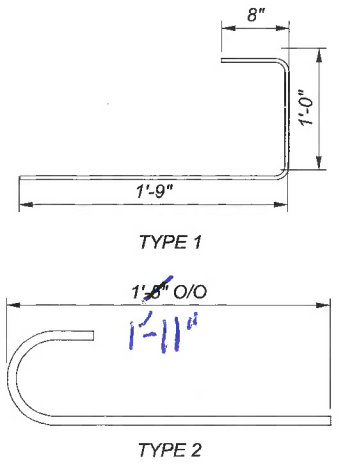


REINFORCING STEEL SCHEDULE				
MARK	TYPE	NUMBER	LENGTH	TOTAL WEIGHT (LB)
S401	STRAIGHT	144	25'-6"	2,453
S402	✓ 1	✓ 714	3'-2"	✓ 1,511
S501	STRAIGHT	80	29'-0"	2,420
S502	2	✓ 528	2'-0"	✓ 1,107
S601	2	✓ 240	2'-7"	✓ 757
TOTAL CARRIED TO SHEET 1/4				8,235

*Very inefficient - use 30'-0" per BDU  
 Revise #5401 (5 bars per mat) Rigid length = 209'-1" + 7x2'-4" - 0'-4" = 225'-1" ⇒ 5401 (7x10x2 / 140) @ 30'-0" & 5403 (7x10x2 / 140) @ 15'-0" ⇒ use 16'-0" eccentrical (214 lbs)*

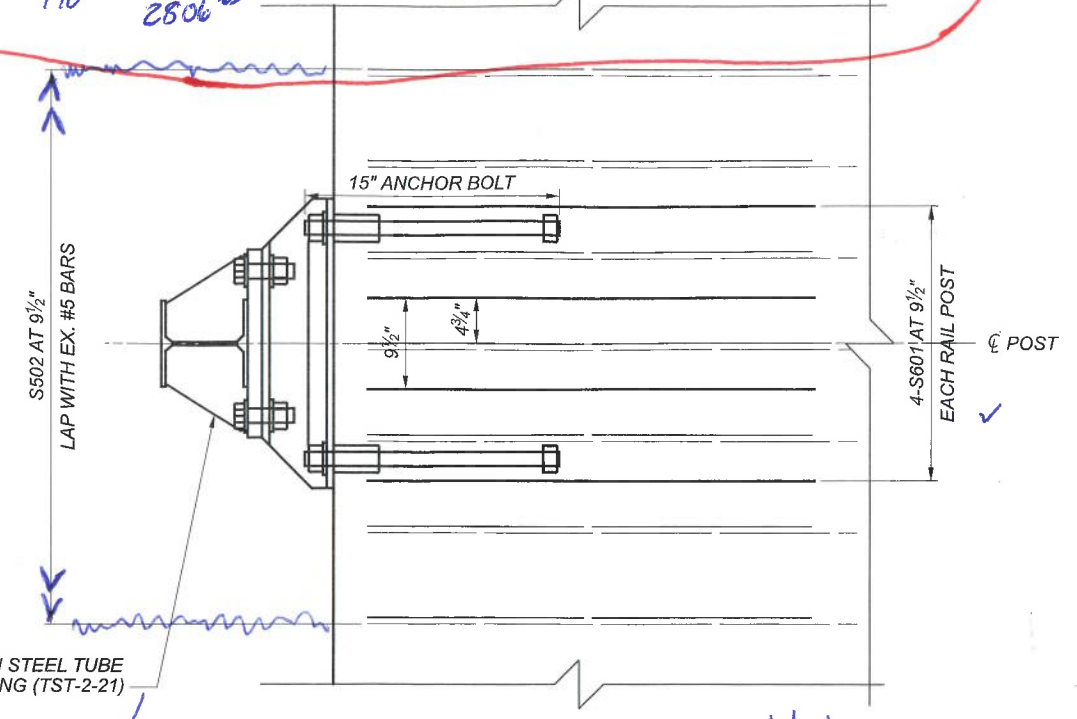
*Show the strip scaled exp. it. at deck  
 end & note that they are to carefully  
 remove it.*

**BENDING DETAIL**



**EXISTING DECK (ACUTE CORNER), REINFORCING MAT PLAN**

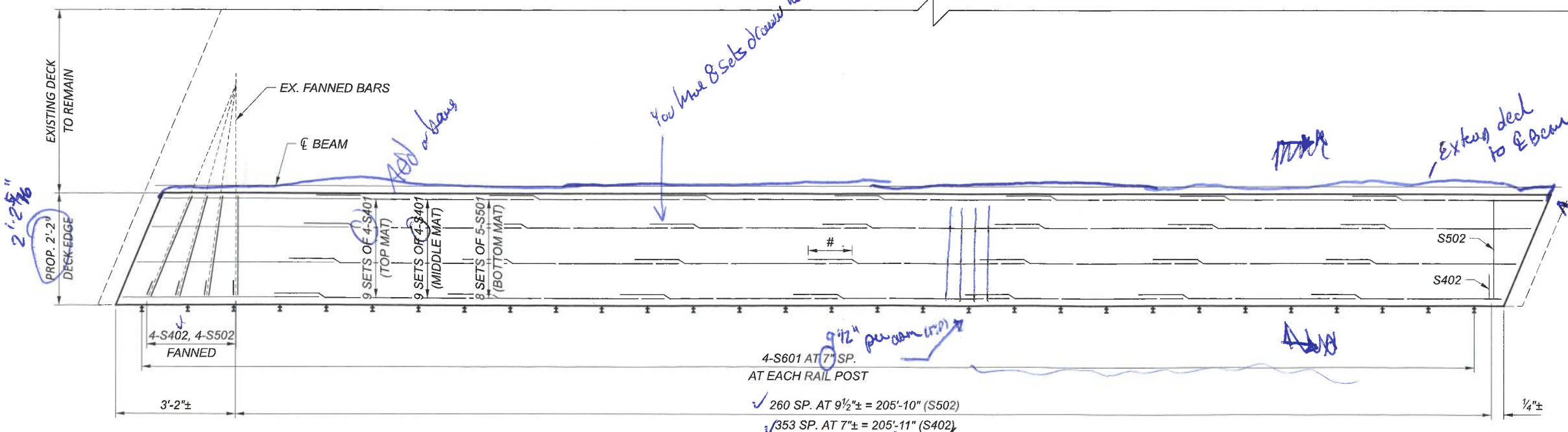
SOUTHWEST CORNER SHOWN  
 NORTHEAST CORNER SIMILAR



**REINFORCEMENT AT RAILING POSTS PLAN**

LONGITUDINAL BARS NOT SHOWN

*5501 209'-1" + 7x3'-0"-4" = 229'-9" (5x7x2 / 70 bars) 2190 lbs  
 5503 10 bars @ 19'-9" use 21' 219 lbs*



**PROPOSED DECK EDGE REINFORCING PLAN**

SOUTH SIDE EDGE SHOWN, BOTH EDGES SIMILAR  
 PIER BARS NOT SHOWN

# = 28" (#4 BARS)  
 = 36" (#5 BARS)

*Are there pier bars? If so, they need to be  
 detailed somewhere & included in plans*

SFN	3904083
DESIGN AGENCY	DISTRICT 3
ENGINEERING TEAM ONE	
DESIGNER	CHECKER
JLL	KRB
REVIEWER	
XXX MM-DD-YY	
PROJECT ID	116943
SUBSET TOTAL	3 3
SHEET TOTAL	P.24 0