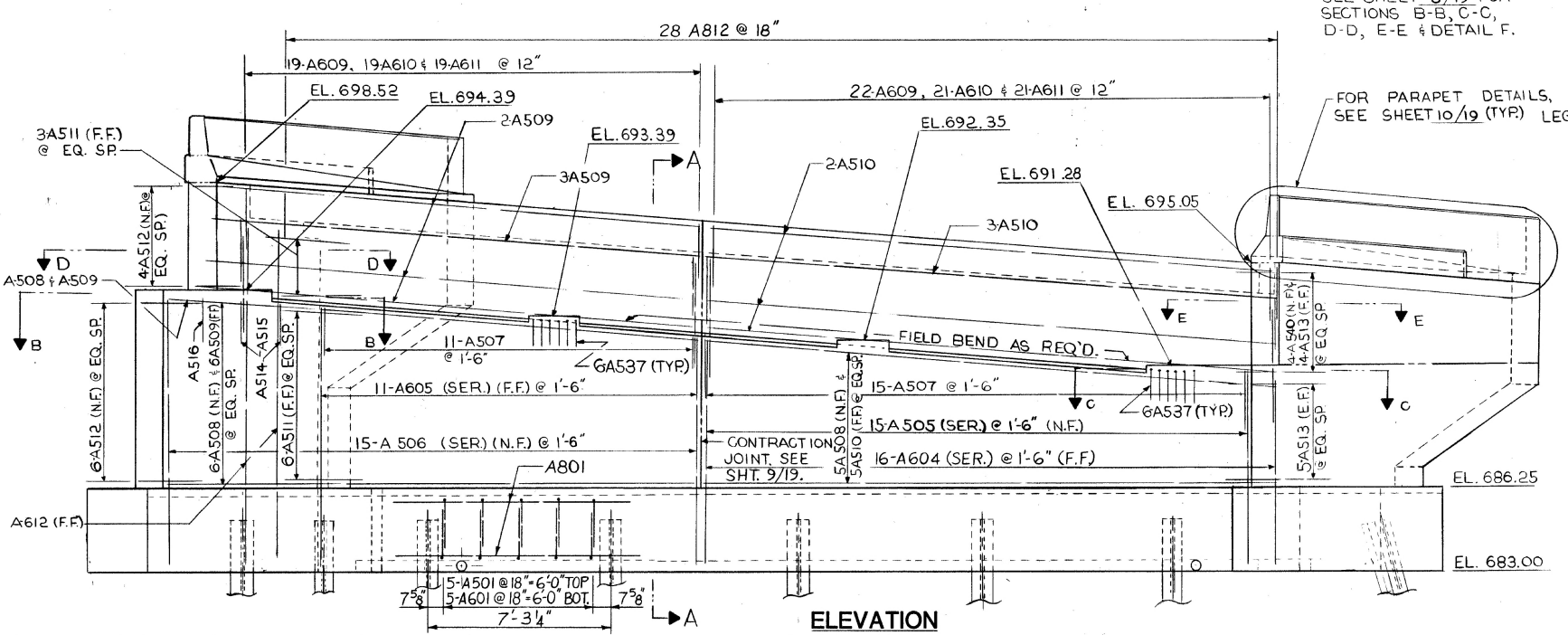
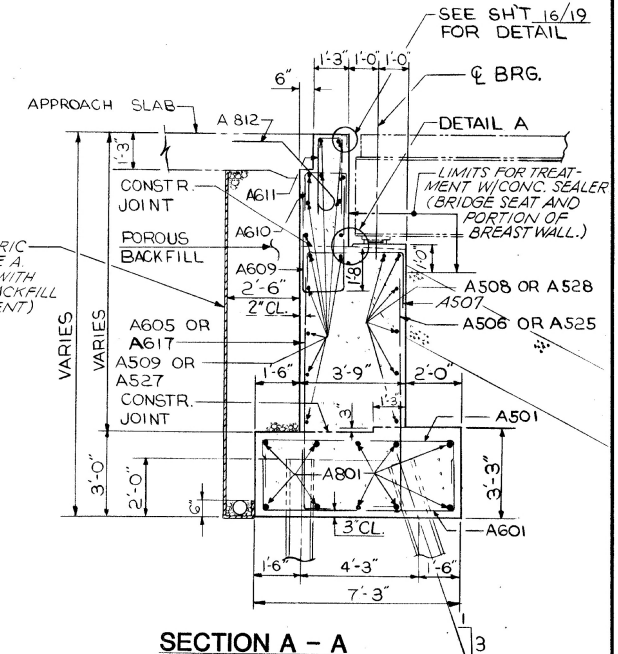
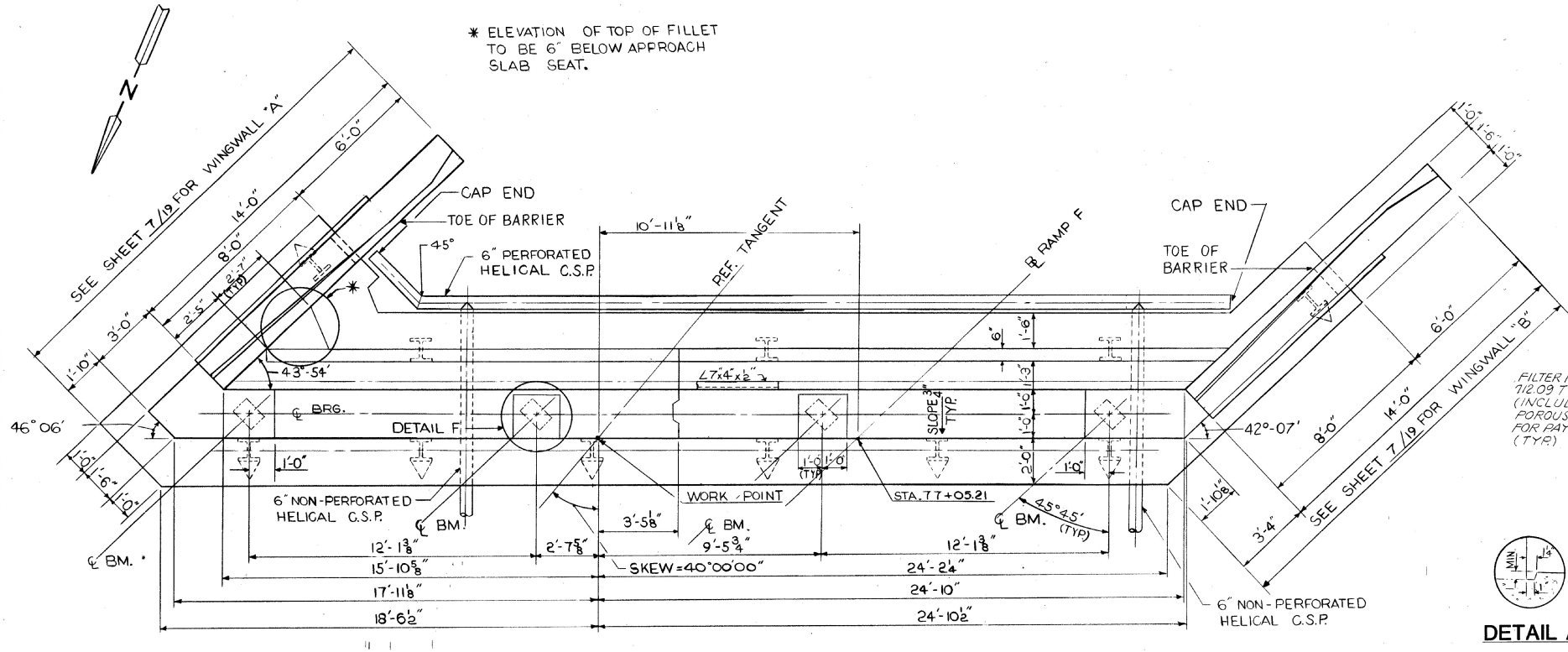


JEF-22-13.85
JEFFERSON COUNTY



SEE SHEET 8/19 FOR SECTIONS B-B, C-C, D-D, E-E & DETAIL F.



DETAIL A

NOTES:

ELEVATIONS SHOWN ARE LOCATED AT THE NEAR FACE OF THE BACK WALL AND ON THE CENTERLINE OF BEARING RESPECTIVELY.

POROUS BACKFILL, 2'-6" THICK, SHALL EXTEND UP TO THE PLANE OF THE SUBGRADE AND LATERALLY TO THE ENDS OF THE WING WALLS.

BACKWALL CONCRETE: IN ADDITION TO THE PROVISIONS OF 511.08, BACKWALL CONCRETE ABOVE THE OPTIONAL CONSTRUCTION JOINT AT THE APPROACH SLAB SEAT SHALL NOT BE PLACED UNTIL AFTER THE DECK CONCRETE IN THE SPAN ADJACENT TO THE ABUTMENT HAS BEEN PLACED.

FOR PARAPET DETAILS, SEE SHEET 10/19 (TYP.)

LEGEND:
E.F. = EACH FACE
F.F. = FAR FACE
N.F. = NEAR FACE

SEE SHEET 9/19 FOR CONTR. JT. DETAIL

FOR FOOTER LAYOUT, SEE SHEET 4/19

MOSURE AND SYRAKIS CO. YOUNGSTOWN, OHIO				
REAR ABUTMENT DETAILS				
BRIDGE NO. JEF-22-1483				
RAMP F OVER				
C.R. 43		STA. 77+00.45		
JEFFERSON COUNTY, OHIO		STA. 78+78.12		
DESIGNED	DRAWN	CALC.	CHECKED	REVIEWED
A.C.	B.H.	A.C.	W.H.	D.S.
10-87	10-87	10-87	12-87	11-89