

I:\Project+Data\Law\52\_0682\_VAR\Design\Roadway\Sheets\01027\2020\_3:38:10 PM - jzickafa

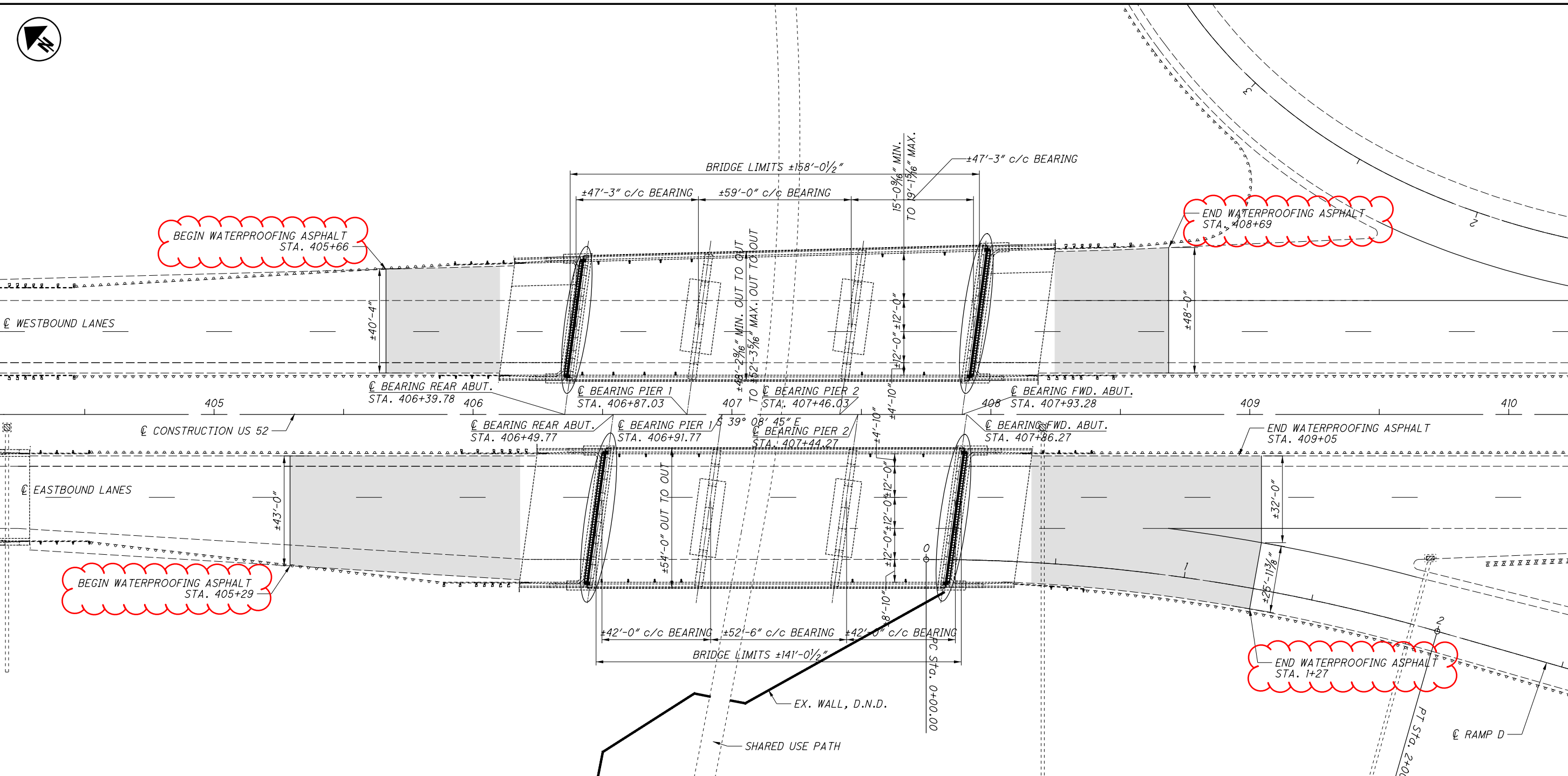
SHEET NUM.										PART.		ITEM	ITEM EXT	GRAND TOTAL	UNIT	DESCRIPTION	SEE SHEET NO.
2	4				27	30		40	01/NFA/BR								
<b>ROADWAY</b>																	
LS									LS	201	11000	LS		CLEARING AND GRUBBING			
<b>EROSION CONTROL</b>																	
		1							1	616	10000	1	MGAL	WATER			
									1,500	832	30000	1,500	EACH	EROSION CONTROL			
<b>TRAFFIC CONTROL</b>																	
				0.94					0.94	642	00104	0.94	MILE	EDGE LINE, 6", TYPE 1			
				1.18					1.18	642	00204	1.18	MILE	LANE LINE, 6", TYPE 1			
				280					280	642	00400	280	FT	CHANNELIZING LINE, 8", TYPE 1			
				935					935	642	00404	935	FT	CHANNELIZING LINE, 12", TYPE 1			
				54					54	642	00700	54	FT	TRANSVERSE/DIAGONAL LINE, TYPE 1			
									4	642	01300	4	EACH	LANE ARROW, TYPE 1			
<b>STRUCTURE REPAIR (LAW-52-0682L)</b>																	
						LS			LS	202	11203	LS		PORTIONS OF STRUCTURE REMOVED, OVER 20 FOOT SPAN, AS PER PLAN	29		
						1,048			1,048	202	23500	1,048	SY	WEARING COURSE REMOVED			
						2			2	511	71100	2	CY	CONCRETE, MISC.: CLASS QC5 CONCRETE	29		
						96			96	516	11211	96	FT	STRUCTURAL EXPANSION JOINT INCLUDING ELASTOMERIC STRIP SEAL, AS PER PLAN	29		
						93			93	516	31010	93	FT	2" DEEP JOINT SEALER			
						14			14	516	45305	14	EACH	REFURBISH BEARING DEVICE, AS PER PLAN	29		
						LS			LS	516	47001	LS		JACKING AND TEMPORARY SUPPORT OF SUPERSTRUCTURE, AS PER PLAN	29		
						12			12	518	12901	12	EACH	SCUPPER, LENGTHENING, AS PER PLAN	29		
						106			106	519	12300	106	SY	PATCHING CONCRETE BRIDGE DECK - TYPE B			
						300			300	844	10000	300	SF	CONCRETE PATCHING WITH GALVANIC ANODE PROTECTION			
						103			103	856	10000	103	CY	BRIDGE DECK WATERPROOFING ASPHALT CONCRETE			
<b>STRUCTURE REPAIR (LAW-52-0682R)</b>																	
						LS			LS	202	11203	LS		PORTIONS OF STRUCTURE REMOVED, OVER 20 FOOT SPAN, AS PER PLAN	29		
						2			2	511	71100	2	CY	CONCRETE, MISC.: CLASS QC5 CONCRETE	29		
						104			104	516	11211	104	FT	STRUCTURAL EXPANSION JOINT INCLUDING ELASTOMERIC STRIP SEAL, AS PER PLAN	29		
						101			101	516	31010	101	FT	2" DEEP JOINT SEALER			
						14			14	516	45305	14	EACH	REFURBISH BEARING DEVICE, AS PER PLAN	29		
						LS			LS	516	47001	LS		JACKING AND TEMPORARY SUPPORT OF SUPERSTRUCTURE, AS PER PLAN	29		
						12			12	518	12901	12	EACH	SCUPPER, LENGTHENING, AS PER PLAN	29		
						106			106	519	12300	106	SY	PATCHING CONCRETE BRIDGE DECK - TYPE B			
						300			300	844	10000	300	SF	CONCRETE PATCHING WITH GALVANIC ANODE PROTECTION			
						142			142	856	10000	142	CY	BRIDGE DECK WATERPROOFING ASPHALT CONCRETE			
<b>STRUCTURE REPAIR (LAW-52-0694L)</b>																	
						LS			LS	202	11203	LS		PORTIONS OF STRUCTURE REMOVED, OVER 20 FOOT SPAN, AS PER PLAN	39		
						1,299			1,299	202	23500	1,299	SY	WEARING COURSE REMOVED			
						2			2	511	71100	2	CY	CONCRETE, MISC.: CLASS QC5 CONCRETE	39		
						104			104	516	11211	104	FT	STRUCTURAL EXPANSION JOINT INCLUDING ELASTOMERIC STRIP SEAL, AS PER PLAN	39		
						102			102	516	31010	102	FT	2" DEEP JOINT SEALER			
						14			14	516	45305	14	EACH	REFURBISH BEARING DEVICE, AS PER PLAN	39		
						LS			LS	516	47001	LS		JACKING AND TEMPORARY SUPPORT OF SUPERSTRUCTURE, AS PER PLAN	39		
						12			12	518	12901	12	EACH	SCUPPER, LENGTHENING, AS PER PLAN	39		
						131			131	519	12300	131	SY	PATCHING CONCRETE BRIDGE DECK - TYPE B			
						300			300	844	10000	300	SF	CONCRETE PATCHING WITH GALVANIC ANODE PROTECTION			
						105			105	856	10000	105	CY	BRIDGE DECK WATERPROOFING ASPHALT CONCRETE			
<b>STRUCTURE REPAIR (LAW-52-0694R)</b>																	
						LS			LS	202	11203	LS		PORTIONS OF STRUCTURE REMOVED, OVER 20 FOOT SPAN, AS PER PLAN	39		
						990			990	202	23500	990	SY	WEARING COURSE REMOVED			
						2			2	511	71100	2	CY	CONCRETE, MISC.: CLASS QC5 CONCRETE	39		
						80			80	516	11211	80	FT	STRUCTURAL EXPANSION JOINT INCLUDING ELASTOMERIC STRIP SEAL, AS PER PLAN	39		
						78			78	516	31010	78	FT	2" DEEP JOINT SEALER			
						12			12	516	45305	12	EACH	REFURBISH BEARING DEVICE, AS PER PLAN	39		
						LS			LS	516	47001	LS		JACKING AND TEMPORARY SUPPORT OF SUPERSTRUCTURE, AS PER PLAN	39		
						11			11	518	12901	11	EACH	SCUPPER, LENGTHENING, AS PER PLAN	39		
						100			100	519	12300	100	SY	PATCHING CONCRETE BRIDGE DECK - TYPE B			

GENERAL SUMMARY

LAW-52-6.82 AND VARIOUS



I:\ProjectData\Law\52\_0682\_VAR\Design\Structures\Law052\_0682\_L\_R\_Sheets\2\_0682L\_R\_SPOOL.dgn Sheet 10/28/2020 7:07:33 AM izickofo



BEGIN WATERPROOFING ASPHALT  
STA. 405+66

END WATERPROOFING ASPHALT  
STA. 408+69

BEGIN WATERPROOFING ASPHALT  
STA. 405+29

END WATERPROOFING ASPHALT  
STA. 1+27

**EXISTING STRUCTURE**

TYPE: CONTINUOUS STEEL BEAM WITH REINFORCED CONCRETE DECK AND SUBSTRUCTURE

SPANS: LEFT: ±47'-3" - ±59'-0" - ±47'-3" c/c BEARINGS  
RIGHT: ±42'-0" - ±52'-6" - ±42'-0" c/c BEARINGS

ROADWAY: LEFT: ±48'-2 1/16" MIN. o/o TO ±52'-3 5/16" MAX. o/o  
RIGHT: ±54'-0" o/o

LOADING: HS20

SKEW: ±7°50'00" LEFT FORWARD

WEARING SURFACE: LEFT: ±3 1/4" ASPHALT CONCRETE  
RIGHT: ±1 1/4" LATEX MODIFIED CONCRETE

APPROACH SLABS: ±25'-0" LONG

ALIGNMENT: TANGENT

CROWN: NORMAL

STRUCTURAL FILE NUMBER: 4400453L & 4400488R

DATE BUILT: 1960

DISPOSITION: REHABILITATION

**PROPOSED WORK**

REMOVE PORTIONS OF THE ABUTMENTS, PARAPETS, POLYMER MODIFIED JOINTS, AND SLIDING PLATE JOINTS AS DETAILED

PLACE PROPOSED EXPANSION JOINT AND CAST BACK ABUTMENTS AND PARAPETS

REMOVE ±3 1/4" OF ASPHALT OVERLAY ON LEFT BRIDGE AND APPROACH SLABS

PATCH BRIDGE DECKS AND APPROACH SLABS AND THEN OVERLAY THEM WITH 2 1/2" OF ITEM 856 - BRIDGE DECK WATERPROOFING ASPHALT CONCRETE

PATCH PORTIONS OF ABUTMENTS WITH EMBEDDED GALVANIC ANODE PROTECTION AS DIRECTED BY THE ENGINEER

REFURBISH BEARINGS AND EXTEND SCUPPERS

**LEGEND**

- CONCRETE PATCHING WITH EMBEDDED GALVANIC ANODE PROTECTION, AS PER S.S. 844. (ANODE SPACING = 16", MIN. 1 ANODE PER PATCHING AREA). SEE DETAIL ON SHEET 2710.
- BUTT JOINT PER SCD BP-3.1

DESIGN TRAFFIC:  
2021 ADT = 12,500    2021 ADTT = 1,000  
2041 ADT = 14,000    2041 ADTT = 1,120  
DIRECTIONAL DISTRIBUTION = 57%

EX. CURVE DATE - RAMP D  
P.I. Sta. 1+00.66  
Δ = 16° 00' 00" (RT)  
Dc = 8° 00' 00"  
R = 716.20'  
T = 100.66'  
L = 200.00'  
E = 7.04'

DESIGN AGENCY ODOT DISTRICT 9 PLANNING & ENGINEERING	DATE 7/24/20
	REVIEWED MCM
	STRUCTURE FILE NUMBER 4400453/4400488
DESIGNED JAZ	DRAWN JAZ
CHECKED	REVISED
LAWRENCE COUNTY STA. 406+40 STA. 407+93	LAWRENCE COUNTY STA. 406+50 STA. 407+86
<b>SITE PLAN</b> BRIDGE NO. LAW-52-0682 OVER SHARED USE PATH	
<b>LAW-52-6.82 AND VARIOUS PIDs 102853</b>	
1 / 10	
28	
57	

I:\ProjectData\LA02853.LAW\52\_0682\_VAR\Design\Structures\LA052\_0682L\_R\_Sheets\2\_0682L\_R\_S0001.dgn\_Sheet 10/27/2020 3:38:15 PM jzickakfo

CALC: JAZ DATE: 5/18/2020  
 CHECKED: MCM DATE: 7/24/2020

ESTIMATED QUANTITIES LAW-52-0682L (01/NFA/BR)										
ITEM	EXTENSION	TOTAL	UNIT	DESCRIPTION	ABUT.	PIERS	SUPER.	GEN.	SEE SHEET	
202	11203	LS		PORTIONS OF STRUCTURE REMOVED, OVER 20 FOOT SPAN, AS PER PLAN				LS	2/10	
202	23500	1048	SY	WEARING COURSE REMOVED			792	256		
511	71100	2	CY	CONCRETE, MISC.: CLASS QC5 CONCRETE	1			1		
516	11211	96	FT	STRUCTURAL EXPANSION JOINT INCLUDING ELASTOMERIC STRIP SEAL, AS PER PLAN				96	2/10	
516	31010	93	FT	2" DEEP JOINT SEALER				93		
516	45305	14	EACH	REFURBISH BEARING DEVICE, AS PER PLAN			14		2/10	
516	47001	LS		JACKING AND TEMPORARY SUPPORT OF SUPERSTRUCTURE, AS PER PLAN			LS		2/10	
518	12901	12	EACH	SCUPPER, LENGTHENING, AS PER PLAN			12		2/10	
519	12300	106	SY	PATCHING CONCRETE BRIDGE DECK - TYPE B			80	26		
844	10000	300	SF	CONCRETE PATCHING WITH GALVANIC ANODE PROTECTION	300					
856	10000	103	CY	BRIDGE DECK WATERPROOFING ASPHALT CONCRETE			55	48		

CALC: JAZ DATE: 5/18/2020  
 CHECKED: MCM DATE: 7/24/2020

ESTIMATED QUANTITIES LAW-52-0682R (01/NFA/BR)										
ITEM	EXTENSION	TOTAL	UNIT	DESCRIPTION	ABUT.	PIERS	SUPER.	GEN.	SEE SHEET	
202	11203	LS		PORTIONS OF STRUCTURE REMOVED, OVER 20 FOOT SPAN, AS PER PLAN				LS	2/10	
511	71100	2	CY	CONCRETE, MISC.: CLASS QC5 CONCRETE	1			1		
516	11211	104	FT	STRUCTURAL EXPANSION JOINT INCLUDING ELASTOMERIC STRIP SEAL, AS PER PLAN				104	2/10	
516	31010	101	FT	2" DEEP JOINT SEALER				101		
516	45305	14	EACH	REFURBISH BEARING DEVICE, AS PER PLAN			14		2/10	
516	47001	LS		JACKING AND TEMPORARY SUPPORT OF SUPERSTRUCTURE, AS PER PLAN			LS		2/10	
518	12901	12	EACH	SCUPPER, LENGTHENING, AS PER PLAN			12		2/10	
519	12300	106	SY	PATCHING CONCRETE BRIDGE DECK - TYPE B			78	28		
844	10000	300	SF	CONCRETE PATCHING WITH GALVANIC ANODE PROTECTION	300					
856	10000	142	CY	BRIDGE DECK WATERPROOFING ASPHALT CONCRETE			55	87		

DESIGN AGENCY  
 ODOT DISTRICT 9  
 PLANNING & ENGINEERING

DESIGNED  
 JAZ  
 CHECKED

DRAWN  
 JAZ  
 REVISED

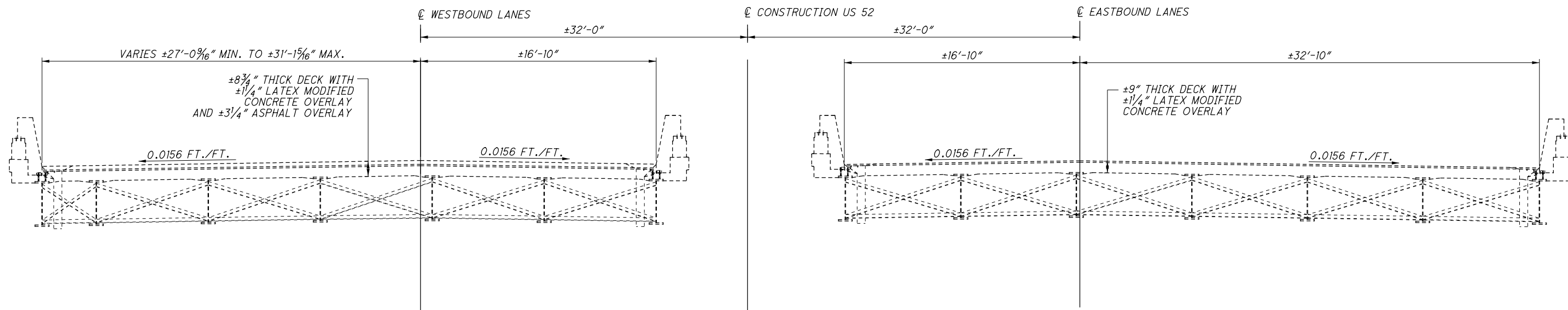
REVIEWED  
 MCM  
 STRUCTURE FILE NUMBER  
 4400453/4400488

DATE  
 7/24/20

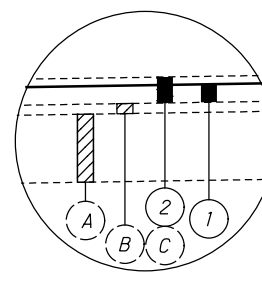
ESTIMATED QUANTITIES  
 BRIDGE NO. LAW-52-0682  
 OVER SHARED USE PATH

LAW-52-6.82  
 AND VARIOUS  
 PID No. 102853

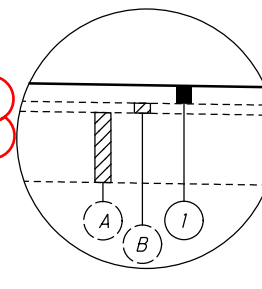
I:\ProjectData\Law\02853.LAW\_52\_0682\_VAR\Design\Structures\Law052\_0682L\_R\_Sheets\2\_0682L\_R\_ST00.dgn\_Sheet 10/21/2020 3:38:19 PM jzickakofa



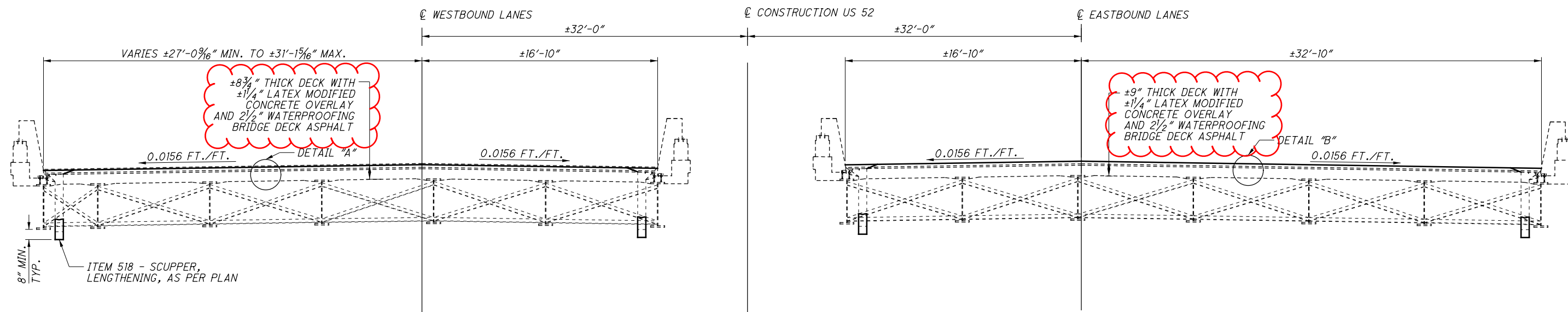
EXISTING TRANSVERSE SECTION



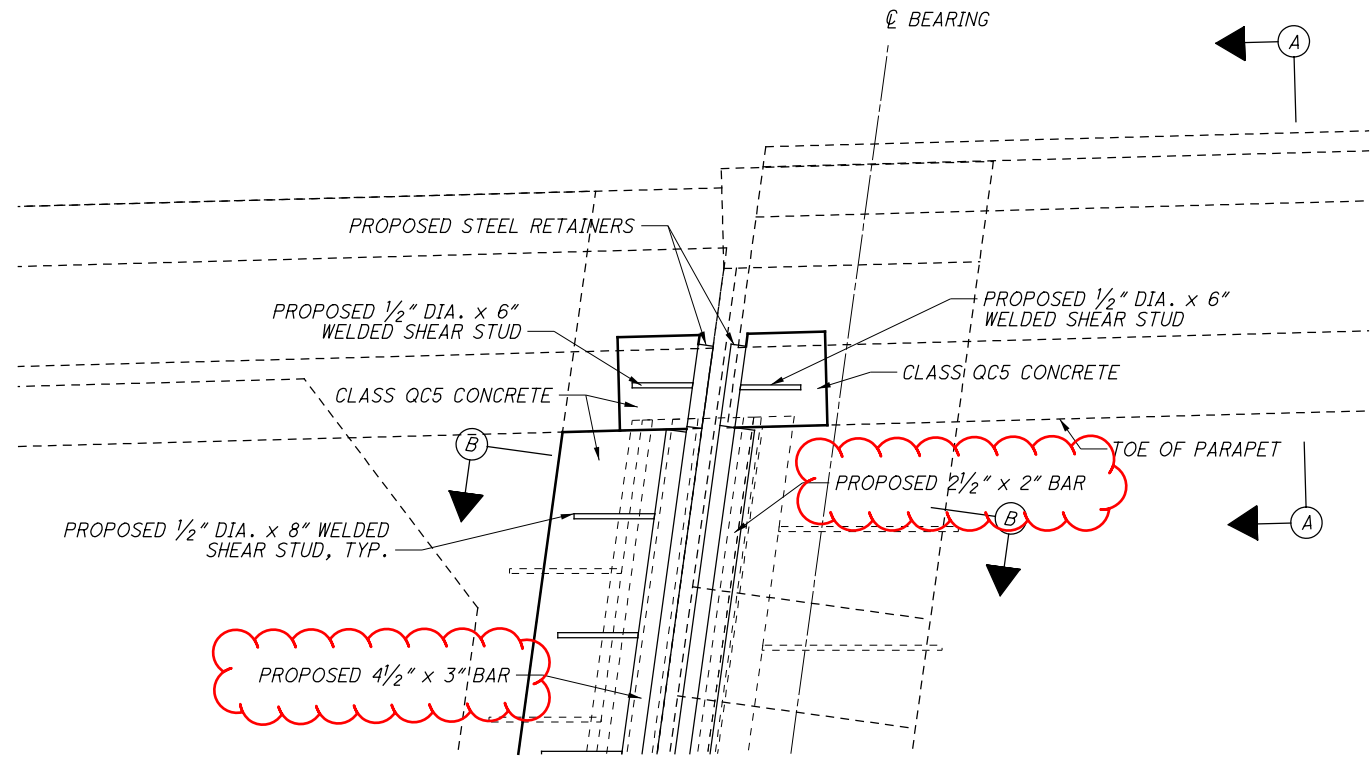
- LEGEND:
- 1) ITEM 856 - 2 1/2" BRIDGE DECK WATERPROOFING ASPHALT CONCRETE
  - 2) ITEM 202 - WEARING COURSE REMOVED
  - (A) EX. ±8 3/4" BRIDGE DECK
  - (B) EX. ±1 1/4" LATEX MODIFIED CONCRETE OVERLAY
  - (C) EX. ±3 1/4" ASPHALT CONCRETE OVERLAY



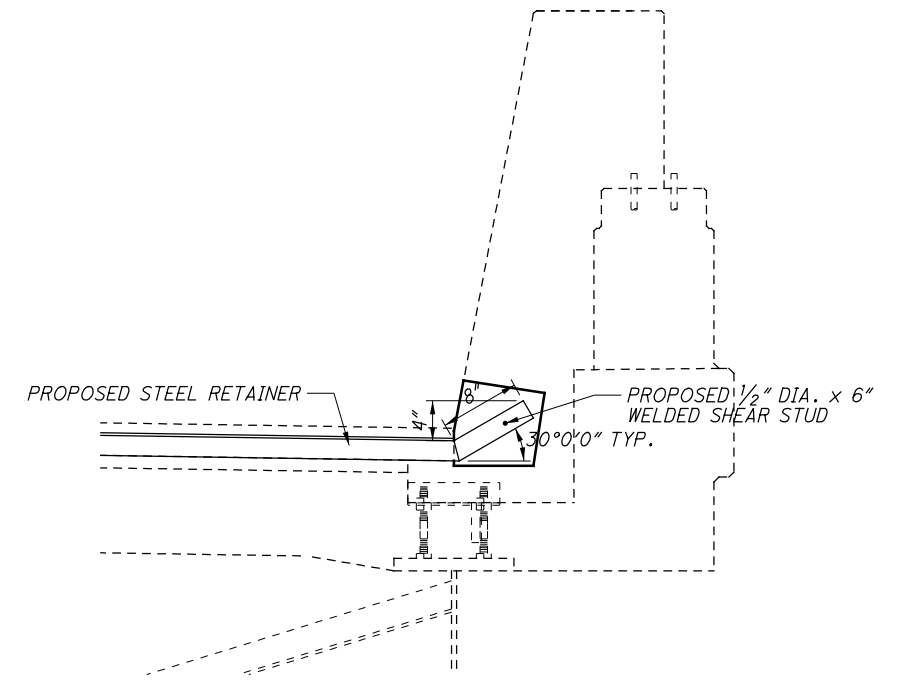
- LEGEND:
- 1) ITEM 856 - 2 1/2" BRIDGE DECK WATERPROOFING ASPHALT CONCRETE
  - (A) EX. ±9" BRIDGE DECK
  - (B) EX. ±1 1/4" LATEX MODIFIED CONCRETE OVERLAY



PROPOSED TRANSVERSE SECTION



**PROPOSED PLAN VIEW**  
 APPLIES TO BOTH THE LEFT AND RIGHT PARAPETS  
 AT BOTH THE REAR AND FORWARD ABUTMENTS OF  
 THE WESTBOUND LANES



**SECTION A-A**  
 APPLIES TO BOTH THE PARAPET AND PARAPET TRANSITION

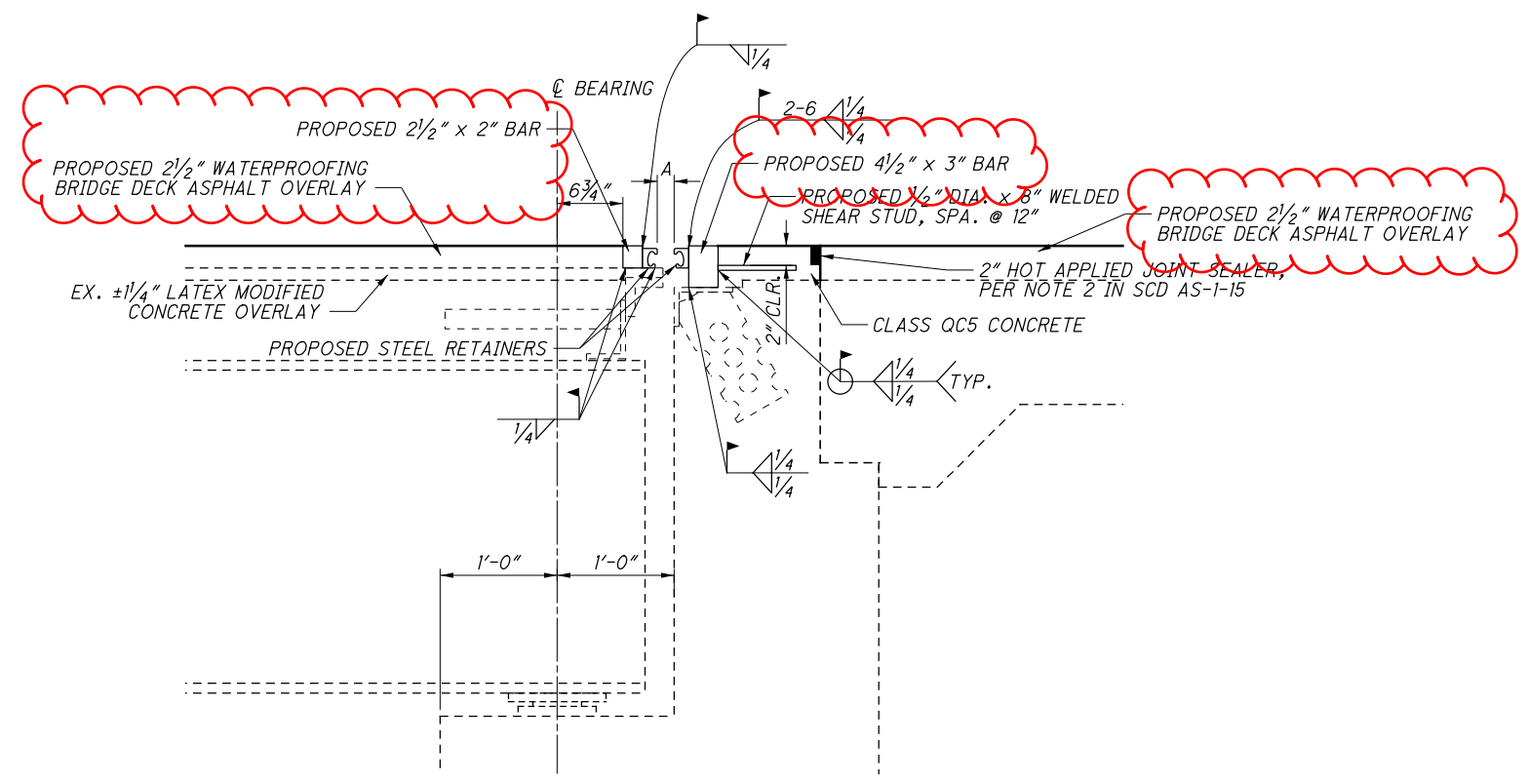
**NEOPRENE STRIP SEAL SPECIFICATIONS**  
 REAR ABUT. A = 1 3/4" @ 60° F  
 FWD. ABUT. A = 1 5/8" @ 60° F

MAXIMUM MOVEMENT PERPENDICULAR	MAXIMUM MOVEMENT PARALLEL	JOINT OPENING
INCHES	INCHES	INCHES
4.0	±0.5	0.5-5.0

**NOTE:** THE PROPOSED JOINT IS DESIGNED FOR A JOINT OPENING OF "A" @ 60° F AND WITH 1/2" WIDE STEEL RETAINERS. THE CONTRACTOR MAY CHOOSE TO USE A DIFFERENT SIZE RETAINER, BUT MUST SUBMIT SHOP DRAWINGS OF PROVISIONS MADE TO MAINTAIN THE JOINT OPENING OF "A" @ 60° F. THESE MUST BE APPROVED BY THE ENGINEER BEFORE WORK CAN BEGIN ON THE JOINT AND SHALL BE NO ADDITIONAL COST TO THE STATE FOR CHANGES MADE BY THE CONTRACTOR.

FOR ADDITIONAL DETAILS REFER TO STD. BDG. DWG. GSD-1-96 AND STD. BDG. DWG. EXJ-4-87.

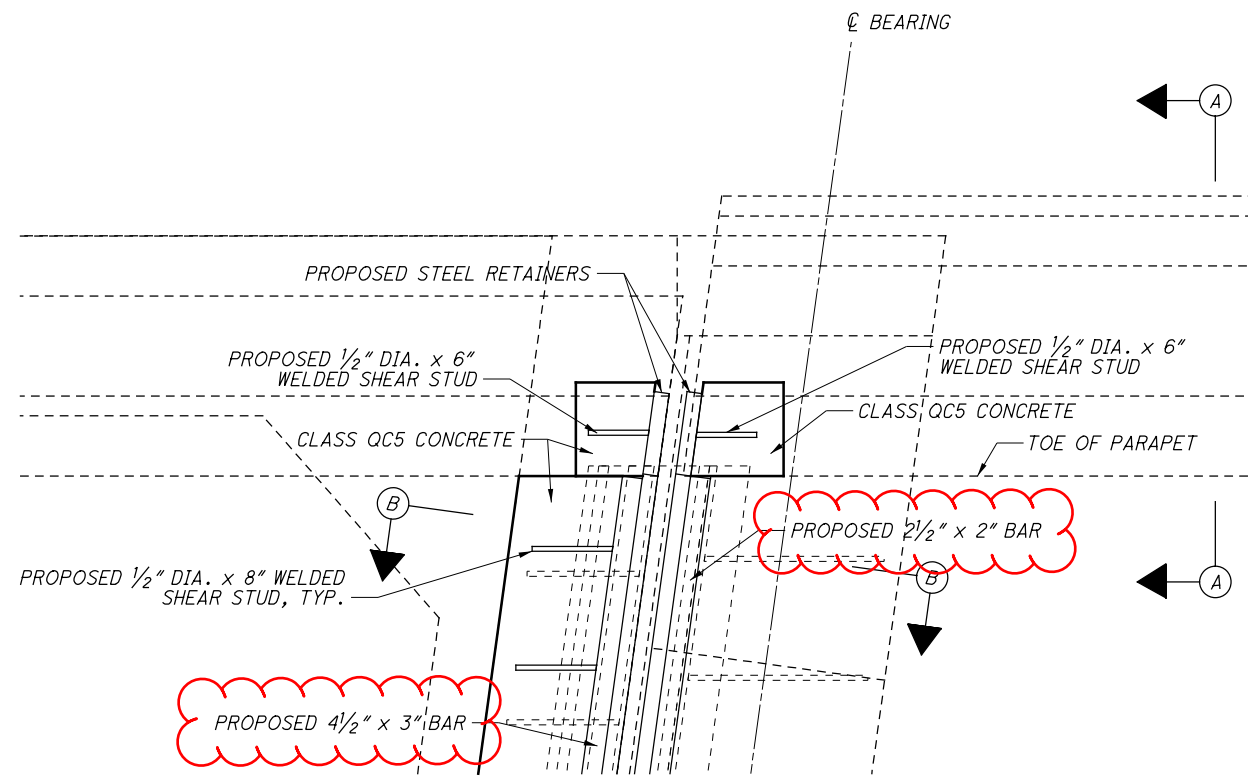
TEMPERATURE	REAR ABUT. DIMENSION "A"	FWD. ABUT. DIMENSION "A"
F	INCHES	INCHES
30	1 13/16	1 7/8
40	1 13/16	1 13/16
50	1 3/4	1 3/4
60	1 3/4	1 5/8
70	1 11/16	1 9/16
80	1 5/8	1 1/2
90	1 5/8	1 7/16



**SECTION B-B**  
 APPLIES TO BOTH THE REAR AND FORWARD ABUTMENTS

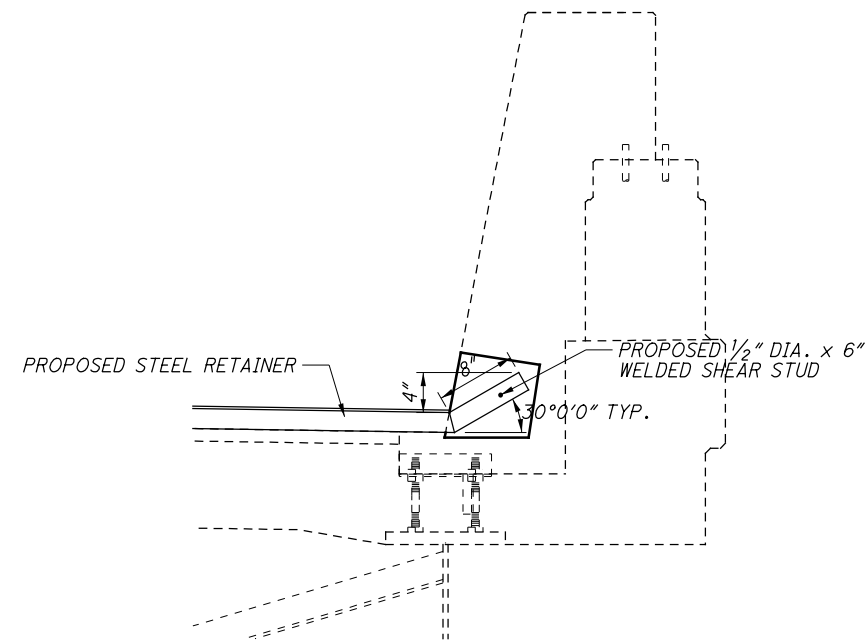
I:\ProjectData\Law\02853\_LAW\_52\_0682\_VAR\Design\Structures\AW052\_0682L\_R\_Sheets\2\_0682L\_R\_SX001.dgn\_Sheet 10/27/2020 3:38:19 PM jzickakaf

DESIGN AGENCY: ODOT DISTRICT 9  
 PLANNING & ENGINEERING  
 DATE: 7/24/20  
 STRUCTURE FILE NUMBER: 4400453  
 DRAWN: JAZ  
 CHECKED: JAZ  
 REVIEWED: MCM  
 DESIGNED: JAZ  
 BRIDGE NO.: LAW-52-0682L  
 OVER SHARED USE PATH  
**LAW-52-6.82 AND VARIOUS**  
 PID No. 102853  
 8 / 10  
 35 / 57



PROPOSED PLAN VIEW

APPLIES TO BOTH THE LEFT AND RIGHT PARAPETS AT BOTH THE REAR AND FORWARD ABUTMENTS OF THE EASTBOUND LANES



SECTION A-A

APPLIES TO BOTH THE PARAPET AND PARAPET TRANSITION

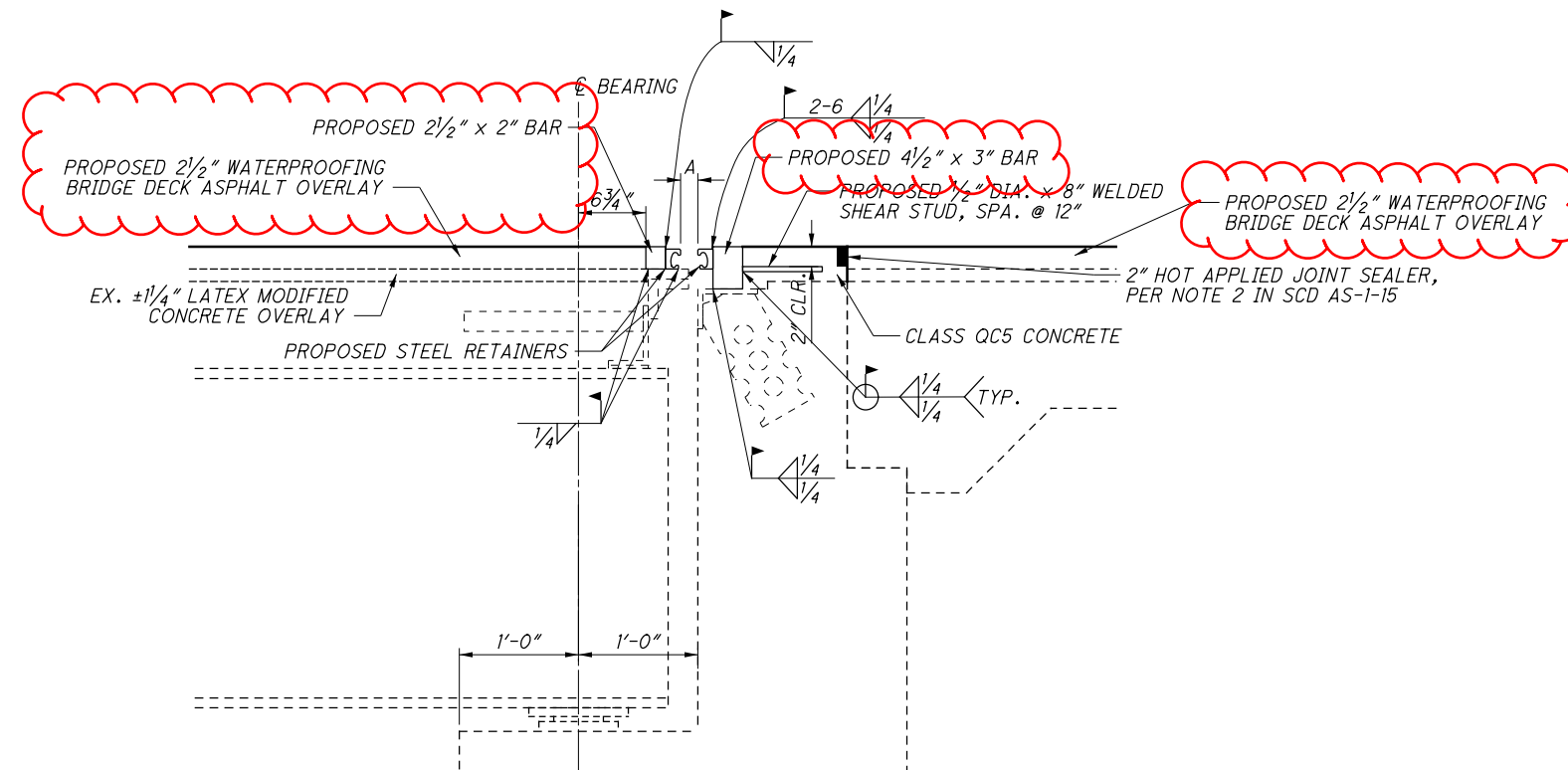
NEOPRENE STRIP SEAL SPECIFICATIONS  
 REAR ABUT. A = 1 1/16" @ 60° F  
 FWD. ABUT. A = 1 9/16" @ 60° F

MAXIMUM MOVEMENT PERPENDICULAR	MAXIMUM MOVEMENT PARALLEL	JOINT OPENING
INCHES	INCHES	INCHES
4.0	±0.5	0.5-5.0

NOTE: THE PROPOSED JOINT IS DESIGNED FOR A JOINT OPENING OF "A" @ 60° F AND WITH 1/2" WIDE STEEL RETAINERS. THE CONTRACTOR MAY CHOOSE TO USE A DIFFERENT SIZE RETAINER, BUT MUST SUBMIT SHOP DRAWINGS OF PROVISIONS MADE TO MAINTAIN THE JOINT OPENING OF "A" @ 60° F. THESE MUST BE APPROVED BY THE ENGINEER BEFORE WORK CAN BEGIN ON THE JOINT AND SHALL BE NO ADDITIONAL COST TO THE STATE FOR CHANGES MADE BY THE CONTRACTOR.

FOR ADDITIONAL DETAILS REFER TO STD. BDG. DWG. GSD-1-96 AND STD. BDG. DWG. EXJ-4-87.

TEMPERATURE	REAR ABUT. DIMENSION "A"	FWD. ABUT. DIMENSION "A"
F	INCHES	INCHES
30	1 13/16	1 7/8
40	1 13/16	1 13/16
50	1 3/4	1 3/4
60	1 11/16	1 5/8
70	1 11/16	1 9/16
80	1 5/8	1 1/2
90	1 9/16	1 3/8



SECTION B-B

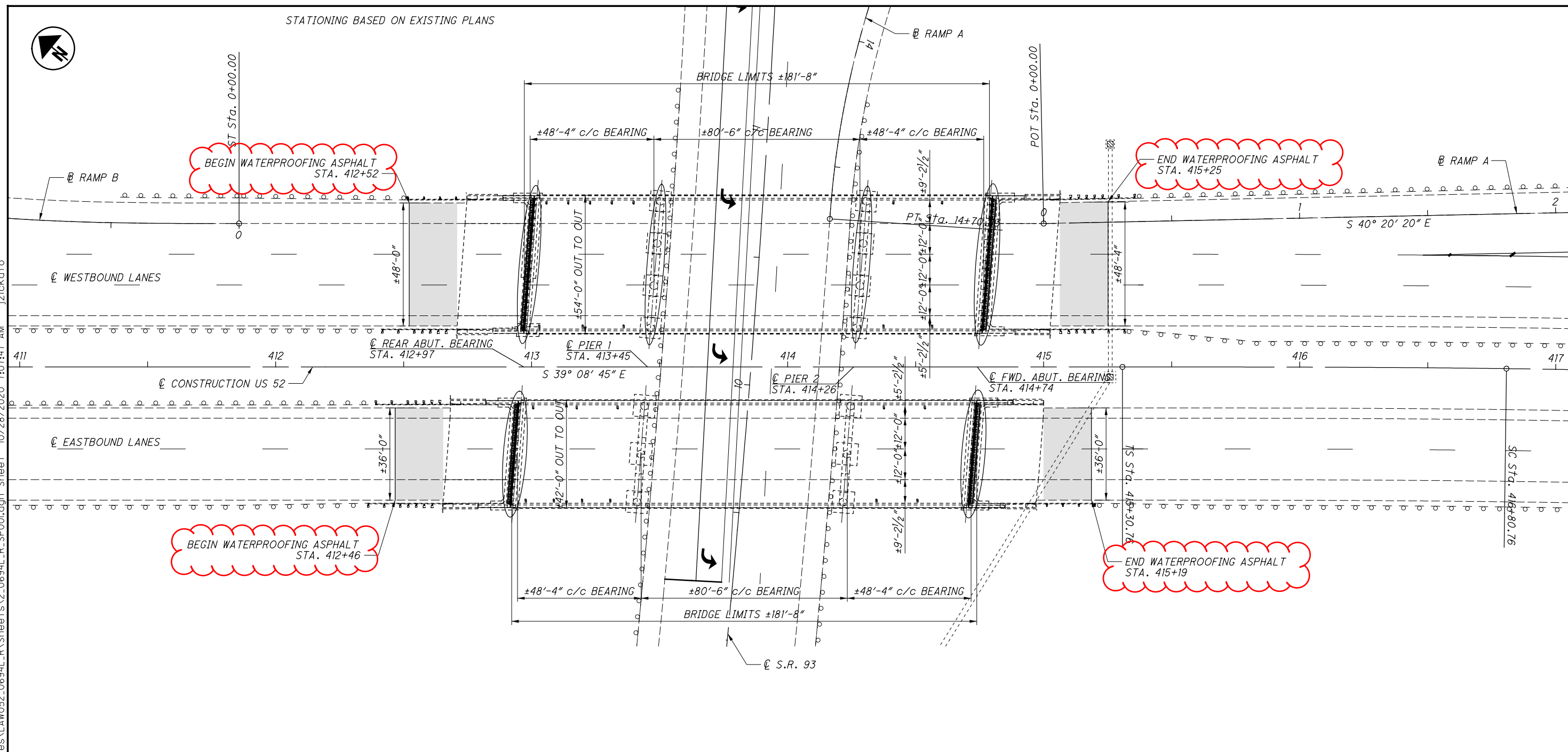
APPLIES TO BOTH THE REAR AND FORWARD ABUTMENTS

I:\ProjectData\Law\02853\_LAW\_52\_0682\_VAR\Design\Structures\Law052\_0682L\_R\_Sheets\2\_0682L\_R\_SX002.dgn Sheet 10/27/2020 3:38:21 PM jzickafa

STATIONING BASED ON EXISTING PLANS



I:\ProjectData\Law\02853\_LAW\_52\_0682\_VAR\Design\Structures\Law052\_0694L\_R\_Sheets\2\_0694L\_R\_SPO0.dgn Sheet 10/28/2020 7:07:47 AM jzickofo



**EXISTING STRUCTURE**

TYPE: CONTINUOUS STEEL BEAM WITH REINFORCED CONCRETE DECK AND SUBSTRUCTURE  
SPANS: LEFT: ±48'-4" - ±80'-6" - ±48'-4" c/c BEARINGS  
RIGHT: ±48'-4" - ±80'-6" - ±48'-4" c/c BEARINGS  
ROADWAY: LEFT: ±54'-0" o/o  
RIGHT: ±42'-0" o/o  
LOADING: HS20  
SKEW: ±4°25'30" LEFT FORWARD  
WEARING SURFACE: LEFT: ±2½" ASPHALT CONCRETE  
RIGHT: ±2½" ASPHALT CONCRETE  
APPROACH SLABS: ±25'-0" LONG  
ALIGNMENT: TANGENT  
CROWN: NORMAL  
STRUCTURAL FILE NUMBER: 4400518L & 4400542R  
DATE BUILT: LEFT: 1960 RIGHT: 1962  
DISPOSITION: REHABILITATION

**PROPOSED WORK**

REMOVE PORTIONS OF THE ABUTMENTS, PARAPETS, POLYMER MODIFIED JOINTS, AND SLIDING PLATE JOINTS AS DETAILED  
PLACE PROPOSED EXPANSION JOINT AND CAST BACK ABUTMENTS AND PARAPETS  
REMOVE ±2½" OF ASPHALT OVERLAY ON THE BRIDGE DECKS AND APPROACH SLABS  
PATCH BRIDGE DECKS AND APPROACH SLABS AND THEN OVERLAY THEM WITH 2½" OF ITEM 856 - BRIDGE DECK WATERPROOFING ASPHALT CONCRETE  
PATCH PORTIONS OF ABUTMENTS & PIERS SHOWN ABOVE WITH EMBEDDED GALVANIC ANODE PROTECTION AS DIRECTED BY THE ENGINEER  
REFURBISH BEARINGS AND EXTEND SCUPPERS

**LEGEND**

- CONCRETE PATCHING WITH EMBEDDED GALVANIC ANODE PROTECTION, AS PER S.S. 844. (ANODE SPACING = 12", MIN. 1 ANODE PER PATCHING AREA). SEE DETAIL ON SHEET 278.
- BUTT JOINT PER SCD BP-3.1

DESIGN TRAFFIC:  
2021 ADT = 16,500 2021 ADTT = 3,630  
2041 ADT = 18,000 2041 ADTT = 3,960  
DIRECTIONAL DISTRIBUTION = 61%

DESIGN AGENCY	ODOT DISTRICT 9
PLANNING & ENGINEERING	
DATE	7/24/20
REVIEWED	MCM
STRUCTURE FILE NUMBER	4400518/4400542
DRAWN	JAZ
REVISOR	
DESIGNED	JAZ
CHECKED	
LAWRENCE COUNTY	STA. 412+95
LAWRENCE COUNTY	STA. 414+76
LAWRENCE COUNTY	STA. 412+95
LAWRENCE COUNTY	STA. 414+76
<b>SITE PLAN</b>	BRIDGE NO. LAW-52-0694
<b>LAW-52-6.82</b>	OVER S.R. 93
<b>AND VARIOUS</b>	
<b>PID No. 102853</b>	
1 / 8	
38	
57	



I:\ProjectData\LA02853.LAW\02853.LAW\_52\_0682\_VAR\Design\Structures\LA052\_0694L\_R\_Sheets\2\_0694L\_R\_S000.dgn\_Sheet 10/27/2020 3:38:25 PM jzickofo

CALC: JAZ DATE: 5/18/2020  
 CHECKED: MCM DATE: 7/24/2020

ESTIMATED QUANTITIES LAW-52-0694L (01/NFA/BR)

ITEM	EXTENSION	TOTAL	UNIT	DESCRIPTION	ABUT.	PIERS	SUPER.	GEN.	SEE SHEET
202	11205	LS		PORTIONS OF STRUCTURE REMOVED, OVER 20 FOOT SPAN, AS PER PLAN				LS	2/8
202	23500	1299	SY	WEARING COURSE REMOVED			1018	281	
511	71100	2	CY	CONCRETE, MISC.: CLASS QC5 CONCRETE	1			1	
516	11211	104	FT	STRUCTURAL EXPANSION JOINT INCLUDING ELASTOMERIC STRIP SEAL, AS PER PLAN				104	2/8
516	31010	102	FT	2" DEEP JOINT SEALER				102	
516	45305	14	EACH	REFURBISH BEARING DEVICE, AS PER PLAN			14		2/8
516	47001	LS		JACKING AND TEMPORARY SUPPORT OF SUPERSTRUCTURE, AS PER PLAN			LS		2/8
518	12901	12	EACH	SCUPPER, LENGTHENING, AS PER PLAN			12		2/8
519	12300	131	SY	PATCHING CONCRETE BRIDGE DECK - TYPE B			102	29	
844	10000	300	SF	CONCRETE PATCHING WITH GALVANIC ANODE PROTECTION	200	100			
856	10000	105	CY	BRIDGE DECK WATERPROOFING ASPHALT CONCRETE			71	34	

CALC: JAZ DATE: 5/18/2020  
 CHECKED: MCM DATE: 7/24/2020

ESTIMATED QUANTITIES LAW-52-0694R (01/NFA/BR)

ITEM	EXTENSION	TOTAL	UNIT	DESCRIPTION	ABUT.	PIERS	SUPER.	GEN.	SEE SHEET
202	11205	LS		PORTIONS OF STRUCTURE REMOVED, OVER 20 FOOT SPAN, AS PER PLAN				LS	2/8
202	23500	990	SY	WEARING COURSE REMOVED			776	214	
511	71100	2	CY	CONCRETE, MISC.: CLASS QC5 CONCRETE	1			1	
516	11211	80	FT	STRUCTURAL EXPANSION JOINT INCLUDING ELASTOMERIC STRIP SEAL, AS PER PLAN				80	2/8
516	31010	78	FT	2" DEEP JOINT SEALER				78	
516	45305	12	EACH	REFURBISH BEARING DEVICE, AS PER PLAN			12		2/8
516	47001	LS		JACKING AND TEMPORARY SUPPORT OF SUPERSTRUCTURE, AS PER PLAN			LS		2/8
518	12901	11	EACH	SCUPPER, LENGTHENING, AS PER PLAN			11		2/8
519	12300	100	SY	PATCHING CONCRETE BRIDGE DECK - TYPE B			78	22	
844	10000	300	SF	CONCRETE PATCHING WITH GALVANIC ANODE PROTECTION	300				
856	10000	80	CY	BRIDGE DECK WATERPROOFING ASPHALT CONCRETE			54	26	

DESIGN AGENCY  
 ODOT DISTRICT 9  
 PLANNING & ENGINEERING

DATE  
 7/24/20  
 REVIEWED  
 MCM  
 STRUCTURE FILE NUMBER  
 4400518/4400542

DRAWN  
 JAZ  
 CHECKED  
 JAZ

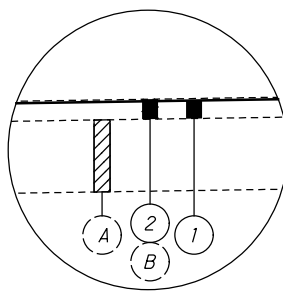
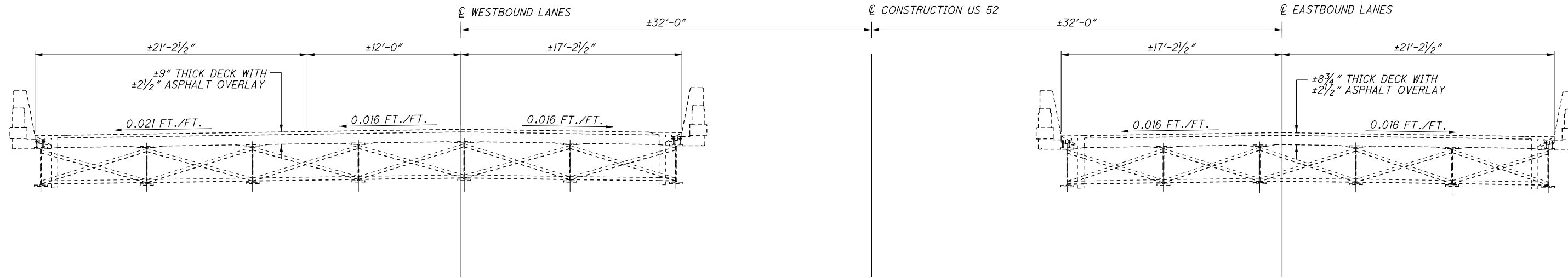
ESTIMATED QUANTITIES  
 BRIDGE NO. LAW-52-0694  
 OVER S.R. 93

LAW-52-6.82  
 AND VARIOUS  
 PID No. 102853

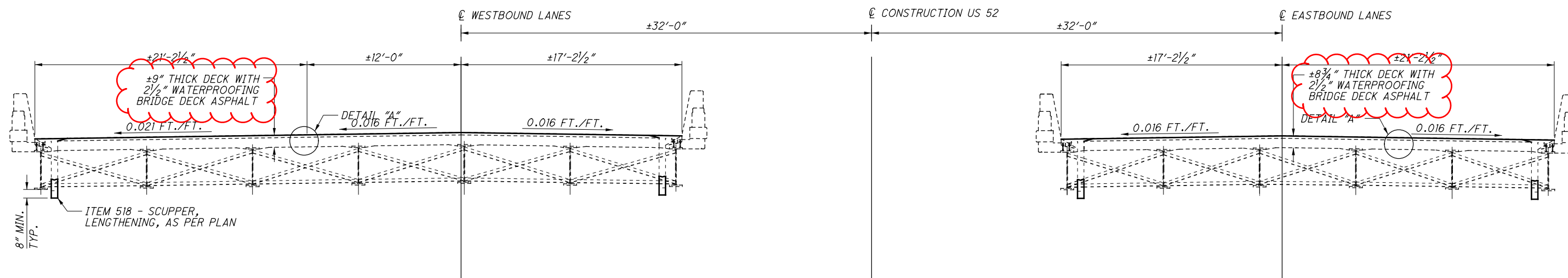
3 / 8

40  
 57

I:\ProjectData\Law\02853\_LAW\_52\_0682\_VAR\Design\Structures\Law052\_0694L\_R\_Sheets\2\_0694L\_R\_ST001.dgn\_Sheet 10/21/2020 3:38:27 PM jzickofo



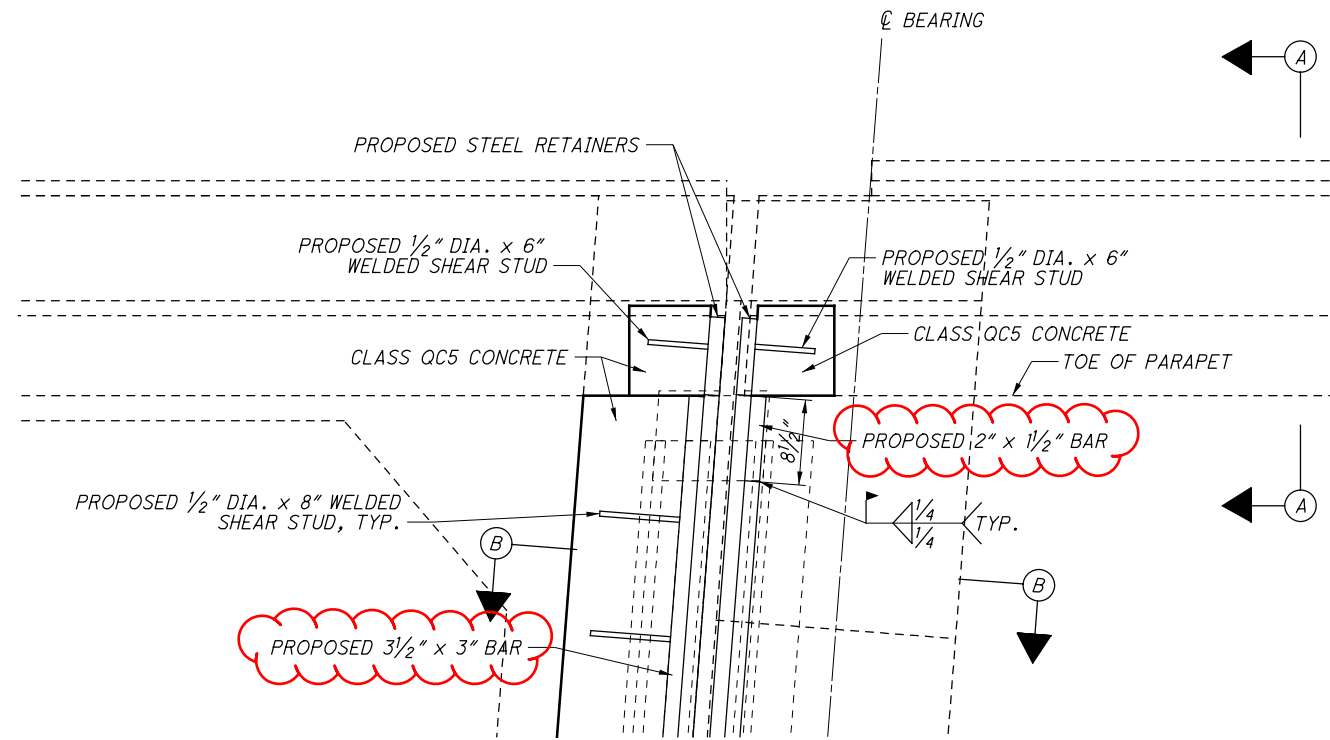
- LEGEND:
- 1) ITEM 856 - 2 1/2" BRIDGE DECK WATERPROOFING ASPHALT CONCRETE
  - 2) ITEM 202 - WEARING COURSE REMOVED
  - A) EX. ±9" BRIDGE DECK (LEFT BRIDGE)  
EX. ±8 3/4" BRIDGE DECK (RIGHT BRIDGE)
  - B) EX. ±2 1/2" ASPHALT CONCRETE OVERLAY



DESIGNED	JAZ	CHECKED	JAZ	DRAWN	JAZ	REVISED	JAZ	REVIEWED	MCM	DATE	7/24/20	DESIGN AGENCY	ODOT DISTRICT 9
											STRUCTURE FILE NUMBER	4400518/4400542	
											PLANNING & ENGINEERING		
											TRANSVERSE SECTION		
											BRIDGE NO. LAW-52-0694		
											OVER S.R. 93		
											LAW-52-6.82		
											AND VARIOUS		
											PID No. 102853		
											6/8		
											43		
											57		

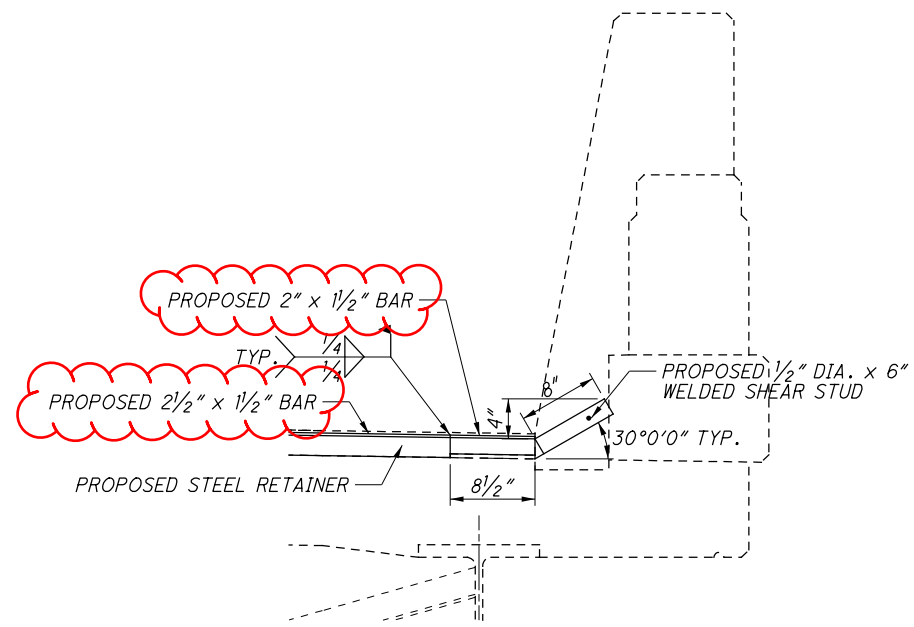


I:\ProjectData\Law\02853\_LAW\_52\_0682\_VAR\Design\Structures\Law052\_0694L\_R\_Sheets\2\_0694L\_R\_SX001.dgn\_Sheet 10/27/2020 3:38:28 PM jzickofo



PROPOSED PLAN VIEW

APPLIES TO BOTH THE LEFT AND RIGHT PARAPETS AT BOTH THE REAR AND FORWARD ABUTMENTS OF THE LEFT AND RIGHT BRIDGES



SECTION A-A

APPLIES TO BOTH THE PARAPET AND PARAPET TRANSITION

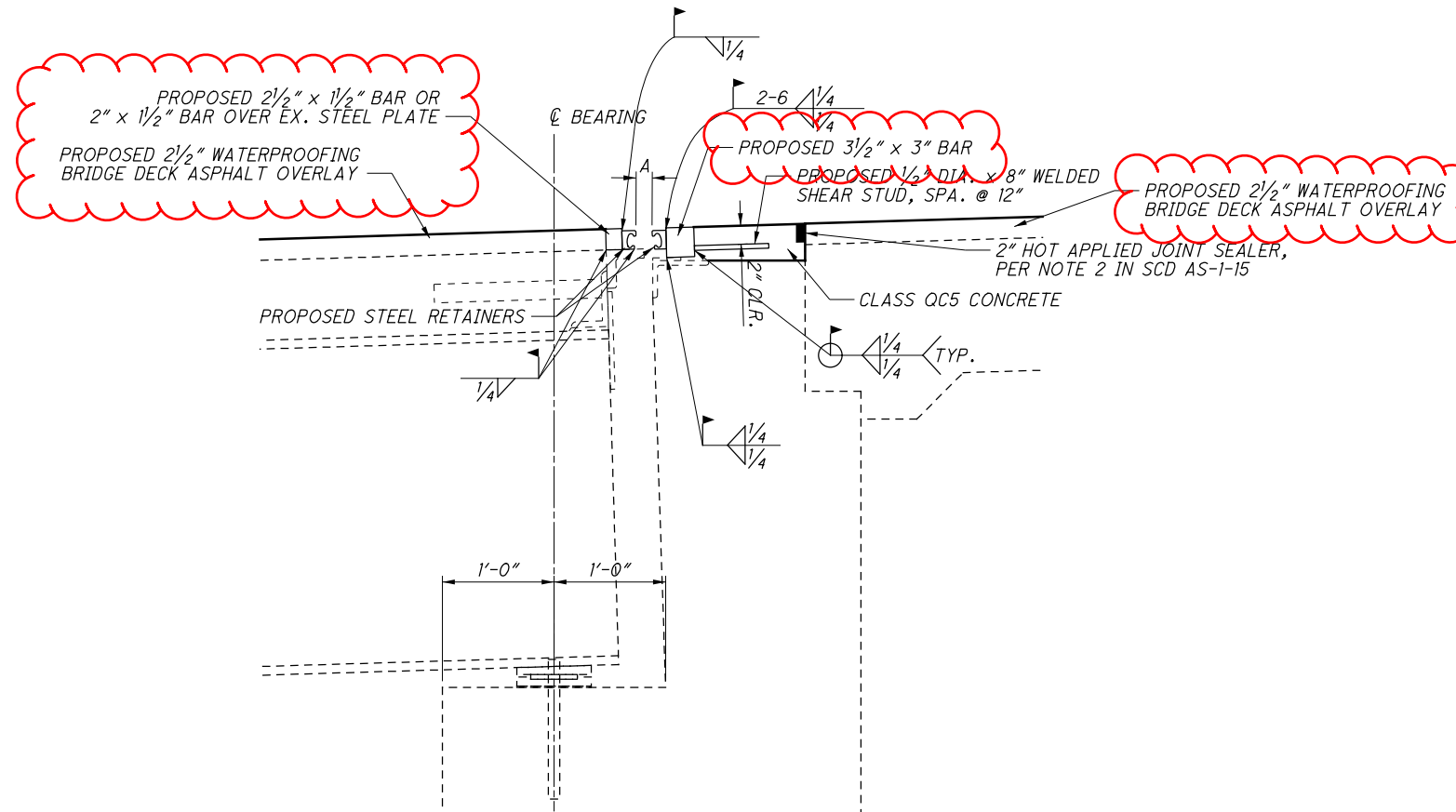
NEOPRENE STRIP SEAL SPECIFICATIONS  
 REAR ABUT. A = 1 1/16" @ 60° F  
 FWD. ABUT. A = 1 5/8" @ 60° F

MAXIMUM MOVEMENT PERPENDICULAR	MAXIMUM MOVEMENT PARALLEL	JOINT OPENING
INCHES	INCHES	INCHES
4.0	±0.5	0.5-5.0

NOTE: THE PROPOSED JOINT IS DESIGNED FOR A JOINT OPENING OF "A" @ 60° F AND WITH 1/2" WIDE STEEL RETAINERS. THE CONTRACTOR MAY CHOOSE TO USE A DIFFERENT SIZE RETAINER, BUT MUST SUBMIT SHOP DRAWINGS OF PROVISIONS MADE TO MAINTAIN THE JOINT OPENING OF "A" @ 60° F. THESE MUST BE APPROVED BY THE ENGINEER BEFORE WORK CAN BEGIN ON THE JOINT AND SHALL BE NO ADDITIONAL COST TO THE STATE FOR CHANGES MADE BY THE CONTRACTOR.

FOR ADDITIONAL DETAILS REFER TO STD. BDG. DWG. GSD-1-96 AND STD. BDG. DWG. EXJ-4-87.

TEMPERATURE	REAR ABUT. DIMENSION "A"	FWD. ABUT. DIMENSION "A"
F	INCHES	INCHES
30	1 13/16	1 7/8
40	1 13/16	1 13/16
50	1 3/4	1 11/16
60	1 11/16	1 5/8
70	1 11/16	1 1/2
80	1 5/8	1 3/8
90	1 9/16	1 5/16



SECTION B-B

APPLIES TO BOTH THE REAR AND FORWARD ABUTMENTS OF BOTH THE LEFT AND RIGHT BRIDGES