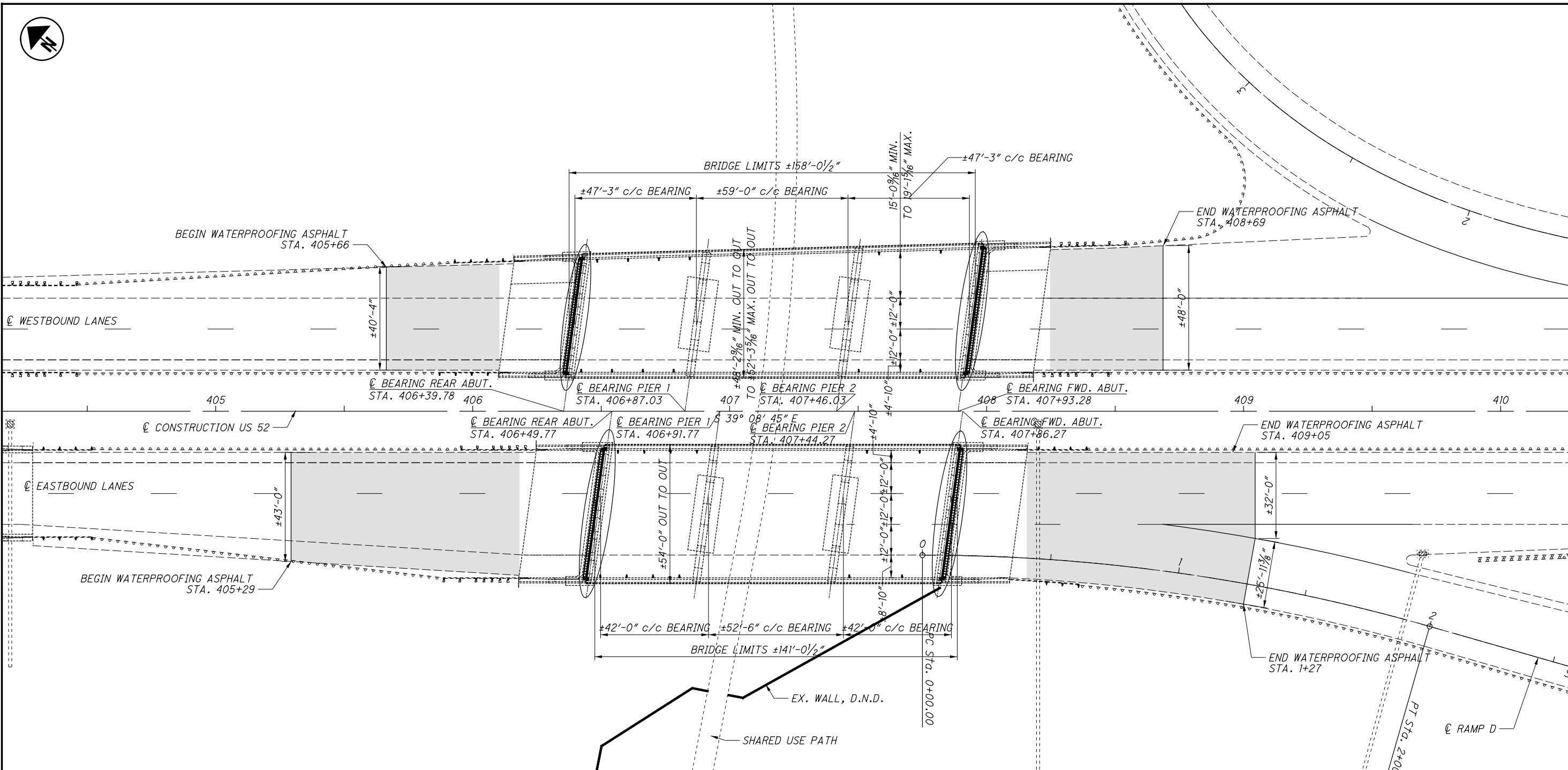


SHEET NUM.				PART.		ITEM	ITEM	GRAND	UNIT	DESCRIPTION	SEE SHEET NO.	
		40	48	51	54	01/NFA/BR	EXT	TOTAL				
STRUCTURE REPAIR (LAW-52-0694R) CONT.												
		300				300	844	10000	300	SF	CONCRETE PATCHING WITH GALVANIC ANODE PROTECTION	
		80				80	856	10000	80	CY	BRIDGE DECK WATERPROOFING ASPHALT CONCRETE	
STRUCTURE REPAIR (LAW-52-0804L)												
			13,350			13,350	514	00050	13,350	SF	SURFACE PREPARATION OF EXISTING STRUCTURAL STEEL	
			13,350			13,350	514	00056	13,350	SF	FIELD PAINTING OF EXISTING STRUCTURAL STEEL, PRIME COAT	
			13,350			13,350	514	00060	13,350	SF	FIELD PAINTING STRUCTURAL STEEL, INTERMEDIATE COAT	
			13,350			13,350	514	00066	13,350	SF	FIELD PAINTING STRUCTURAL STEEL, FINISH COAT	
			19			19	514	00504	19	MNHR	GRINDING FINIS, TEARS, SLIVERS ON EXISTING STRUCTURAL STEEL	
			24			24	514	10000	24	EACH	FINAL INSPECTION REPAIR	
			12			12	516	45305	12	EACH	REFURBISH BEARING DEVICE, AS PER PLAN	47
			LS			LS	516	47001	LS		JACKING AND TEMPORARY SUPPORT OF SUPERSTRUCTURE, AS PER PLAN	47
			12			12	518	12901	12	EACH	SCUPPER, LENGTHENING, AS PER PLAN	47
STRUCTURE REPAIR (LAW-52-0804R)												
			13,350			13,350	514	00050	13,350	SF	SURFACE PREPARATION OF EXISTING STRUCTURAL STEEL	
			13,350			13,350	514	00056	13,350	SF	FIELD PAINTING OF EXISTING STRUCTURAL STEEL, PRIME COAT	
			13,350			13,350	514	00060	13,350	SF	FIELD PAINTING STRUCTURAL STEEL, INTERMEDIATE COAT	
			13,350			13,350	514	00066	13,350	SF	FIELD PAINTING STRUCTURAL STEEL, FINISH COAT	
			19			19	514	00504	19	MNHR	GRINDING FINIS, TEARS, SLIVERS ON EXISTING STRUCTURAL STEEL	
			24			24	514	10000	24	EACH	FINAL INSPECTION REPAIR	
			12			12	516	45305	12	EACH	REFURBISH BEARING DEVICE, AS PER PLAN	47
			LS			LS	516	47001	LS		JACKING AND TEMPORARY SUPPORT OF SUPERSTRUCTURE, AS PER PLAN	47
			12			12	518	12901	12	EACH	SCUPPER, LENGTHENING, AS PER PLAN	47
			300			300	844	10000	300	SF	CONCRETE PATCHING WITH GALVANIC ANODE PROTECTION	
STRUCTURE REPAIR (LAW-52-1048L)												
				5,460		5,460	514	00050	5,460	SF	SURFACE PREPARATION OF EXISTING STRUCTURAL STEEL	
				5,460		5,460	514	00056	5,460	SF	FIELD PAINTING OF EXISTING STRUCTURAL STEEL, PRIME COAT	
				5,460		5,460	514	00060	5,460	SF	FIELD PAINTING STRUCTURAL STEEL, INTERMEDIATE COAT	
				5,460		5,460	514	00066	5,460	SF	FIELD PAINTING STRUCTURAL STEEL, FINISH COAT	
				9		9	514	00504	9	MNHR	GRINDING FINIS, TEARS, SLIVERS ON EXISTING STRUCTURAL STEEL	
				11		11	514	10000	11	EACH	FINAL INSPECTION REPAIR	
				10		10	516	45305	10	EACH	REFURBISH BEARING DEVICE, AS PER PLAN	50
				LS		LS	516	47001	LS		JACKING AND TEMPORARY SUPPORT OF SUPERSTRUCTURE, AS PER PLAN	50
				12		12	518	12901	12	EACH	SCUPPER, LENGTHENING, AS PER PLAN	50
				100		100	844	10000	100	SF	CONCRETE PATCHING WITH GALVANIC ANODE PROTECTION	
STRUCTURE REPAIR (LAW-52-1048R)												
				5,460		5,460	514	00050	5,460	SF	SURFACE PREPARATION OF EXISTING STRUCTURAL STEEL	
				5,460		5,460	514	00056	5,460	SF	FIELD PAINTING OF EXISTING STRUCTURAL STEEL, PRIME COAT	
				5,460		5,460	514	00060	5,460	SF	FIELD PAINTING STRUCTURAL STEEL, INTERMEDIATE COAT	
				5,460		5,460	514	00066	5,460	SF	FIELD PAINTING STRUCTURAL STEEL, FINISH COAT	
				9		9	514	00504	9	MNHR	GRINDING FINIS, TEARS, SLIVERS ON EXISTING STRUCTURAL STEEL	
				11		11	514	10000	11	EACH	FINAL INSPECTION REPAIR	
				10		10	516	45305	10	EACH	REFURBISH BEARING DEVICE, AS PER PLAN	50
				LS		LS	516	47001	LS		JACKING AND TEMPORARY SUPPORT OF SUPERSTRUCTURE, AS PER PLAN	50
				12		12	518	12901	12	EACH	SCUPPER, LENGTHENING, AS PER PLAN	50
				100		100	844	10000	100	SF	CONCRETE PATCHING WITH GALVANIC ANODE PROTECTION	
STRUCTURE REPAIR (LAW-52-1084L)												
				LS		LS	202	11203	LS		PORTIONS OF STRUCTURE REMOVED, OVER 20 FOOT SPAN, AS PER PLAN	53
				1,468		1,468	509	10000	1,468	LB	EPOXY COATED REINFORCING STEEL	
				430		430	510	10001	430	EACH	DOWEL HOLES WITH NONSHRINK, NONMETALLIC GROUT, AS PER PLAN	53
				10		10	511	45720	10	CY	CLASS QC SCC CONCRETE, ABUTMENT	
				27		27	512	10100	27	SY	SEALING OF CONCRETE SURFACES (EPOXY-URETHANE)	
STRUCTURE REPAIR (LAW-52-1084R)												
				LS		LS	202	11203	LS		PORTIONS OF STRUCTURE REMOVED, OVER 20 FOOT SPAN, AS PER PLAN	53
				1,376		1,376	509	10000	1,376	LB	EPOXY COATED REINFORCING STEEL	
				430		430	510	10001	430	EACH	DOWEL HOLES WITH NONSHRINK, NONMETALLIC GROUT, AS PER PLAN	53
				8		8	511	45720	8	CY	CLASS QC SCC CONCRETE, ABUTMENT	
				27		27	512	10100	27	SY	SEALING OF CONCRETE SURFACES (EPOXY-URETHANE)	

GENERAL SUMMARY	CALCULATED	JAZ	CHECKED	MCM
LAW -52-6.82				
AND VARIOUS				
(25)				
(57)				



I:\ProjectData\Law\52_0682_VAR\Design\Structures\Law052_0682_L_R_Sheets\2_0682_L_R_SPO01.dgn Sheet 10/28/2020 7:07:33 AM jzickofo



EXISTING STRUCTURE

TYPE: CONTINUOUS STEEL BEAM WITH REINFORCED CONCRETE DECK AND SUBSTRUCTURE

SPANS: LEFT: ±47'-3" - ±59'-0" - ±47'-3" c/c BEARINGS
 RIGHT: ±42'-0" - ±52'-6" - ±42'-0" c/c BEARINGS

ROADWAY: LEFT: ±48'-2⁹/₁₆" MIN. o/o TO ±52'-3⁵/₁₆" MAX. o/o
 RIGHT: ±54'-0" o/o

LOADING: HS20

SKEW: ±7°50'00" LEFT FORWARD

WEARING SURFACE: LEFT: ±3¹/₄" ASPHALT CONCRETE
 RIGHT: ±1¹/₄" LATEX MODIFIED CONCRETE

APPROACH SLABS: ±25'-0" LONG

ALIGNMENT: TANGENT

CROWN: NORMAL

STRUCTURAL FILE NUMBER: 4400453L & 4400488R

DATE BUILT: 1960

DISPOSITION: REHABILITATION

PROPOSED WORK

REMOVE PORTIONS OF THE ABUTMENTS, PARAPETS, POLYMER MODIFIED JOINTS, AND SLIDING PLATE JOINTS AS DETAILED

PLACE PROPOSED EXPANSION JOINT AND CAST BACK ABUTMENTS AND PARAPETS

REMOVE ±3¹/₄" OF ASPHALT OVERLAY ON LEFT BRIDGE AND APPROACH SLABS

PATCH BRIDGE DECKS AND APPROACH SLABS AND THEN OVERLAY THEM WITH 2¹/₂" OF ITEM 856 - BRIDGE DECK WATERPROOFING ASPHALT CONCRETE

PATCH PORTIONS OF ABUTMENTS WITH EMBEDDED GALVANIC ANODE PROTECTION AS DIRECTED BY THE ENGINEER

REFURBISH BEARINGS AND EXTEND SCUPPERS

LEGEND

- CONCRETE PATCHING WITH EMBEDDED GALVANIC ANODE PROTECTION, AS PER S.S. 844. (ANODE SPACING = 16", MIN. 1 ANODE PER PATCHING AREA). SEE DETAIL ON SHEET 2710.
- BUTT JOINT PER SCD BP-3.1

DESIGN TRAFFIC:
 2021 ADT = 12,500 2021 ADTT = 1,000
 2041 ADT = 14,000 2041 ADTT = 1,120
 DIRECTIONAL DISTRIBUTION = 57%

EX. CURVE DATE - RAMP D
 P.I. Sta. 1+00.66
 $\Delta = 16^\circ 00' 00"$ (RT)
 $D_c = 8^\circ 00' 00"$
 $R = 716.20'$
 $T = 100.66'$
 $L = 200.00'$
 $E = 7.04'$

DESIGN AGENCY ODOT DISTRICT 9 PLANNING & ENGINEERING	DATE 7/24/20
	REVIEWED MCM
DESIGNED JAZ	STRUCTURE FILE NUMBER 4400453/4400488
	DRAWN JAZ
LAWRENCE COUNTY STA. 406+40 STA. 407+93	CHECKED JAZ
	REVISOR JAZ
LAWRENCE COUNTY STA. 406+50 STA. 407+86	DESIGNED JAZ
LAWRENCE COUNTY STA. 406+40 STA. 407+93	DRAWN JAZ
LAWRENCE COUNTY STA. 406+40 STA. 407+93	REVIEWED MCM
LAWRENCE COUNTY STA. 406+40 STA. 407+93	DATE 7/24/20
LAWRENCE COUNTY STA. 406+40 STA. 407+93	DESIGN AGENCY ODOT DISTRICT 9 PLANNING & ENGINEERING
LAWRENCE COUNTY STA. 406+40 STA. 407+93	BRIDGE NO. LAW-52-0682 OVER SHARED USE PATH
LAWRENCE COUNTY STA. 406+40 STA. 407+93	LAW-52-6.82 AND VARIOUS PID No. 102853
LAWRENCE COUNTY STA. 406+40 STA. 407+93	1/10
LAWRENCE COUNTY STA. 406+40 STA. 407+93	28 57

I:\ProjectData\LA02853.LAW\52_0682_VAR\Design\Structures\LA052_0682L_R_Sheets\2_0682L_R_S0001.dgn_Sheet 10/27/2020 3:38:15 PM jzickakfo

CALC: JAZ DATE: 5/18/2020
 CHECKED: MCM DATE: 7/24/2020

ESTIMATED QUANTITIES LAW-52-0682L (01/NFA/BR)									
ITEM	EXTENSION	TOTAL	UNIT	DESCRIPTION	ABUT.	PIERS	SUPER.	GEN.	SEE SHEET
202	11203	LS		PORTIONS OF STRUCTURE REMOVED, OVER 20 FOOT SPAN, AS PER PLAN				LS	2/10
202	23500	1048	SY	WEARING COURSE REMOVED			792	256	
511	71100	2	CY	CONCRETE, MISC.: CLASS QC5 CONCRETE	1			1	
516	11211	96	FT	STRUCTURAL EXPANSION JOINT INCLUDING ELASTOMERIC STRIP SEAL, AS PER PLAN				96	2/10
516	31010	93	FT	2" DEEP JOINT SEALER				93	
516	45305	14	EACH	REFURBISH BEARING DEVICE, AS PER PLAN			14		2/10
516	47001	LS		JACKING AND TEMPORARY SUPPORT OF SUPERSTRUCTURE, AS PER PLAN			LS		2/10
518	12901	12	EACH	SCUPPER, LENGTHENING, AS PER PLAN			12		2/10
519	12300	106	SY	PATCHING CONCRETE BRIDGE DECK - TYPE B			80	26	
844	10000	300	SF	CONCRETE PATCHING WITH GALVANIC ANODE PROTECTION	300				
856	10000	103	CY	BRIDGE DECK WATERPROOFING ASPHALT CONCRETE			55	48	

CALC: JAZ DATE: 5/18/2020
 CHECKED: MCM DATE: 7/24/2020

ESTIMATED QUANTITIES LAW-52-0682R (01/NFA/BR)									
ITEM	EXTENSION	TOTAL	UNIT	DESCRIPTION	ABUT.	PIERS	SUPER.	GEN.	SEE SHEET
202	11203	LS		PORTIONS OF STRUCTURE REMOVED, OVER 20 FOOT SPAN, AS PER PLAN				LS	2/10
511	71100	2	CY	CONCRETE, MISC.: CLASS QC5 CONCRETE	1			1	
516	11211	104	FT	STRUCTURAL EXPANSION JOINT INCLUDING ELASTOMERIC STRIP SEAL, AS PER PLAN				104	2/10
516	31010	101	FT	2" DEEP JOINT SEALER				101	
516	45305	14	EACH	REFURBISH BEARING DEVICE, AS PER PLAN			14		2/10
516	47001	LS		JACKING AND TEMPORARY SUPPORT OF SUPERSTRUCTURE, AS PER PLAN			LS		2/10
518	12901	12	EACH	SCUPPER, LENGTHENING, AS PER PLAN			12		2/10
519	12300	106	SY	PATCHING CONCRETE BRIDGE DECK - TYPE B			78	28	
844	10000	300	SF	CONCRETE PATCHING WITH GALVANIC ANODE PROTECTION	300				
856	10000	142	CY	BRIDGE DECK WATERPROOFING ASPHALT CONCRETE			55	87	

DESIGN AGENCY
 ODOT DISTRICT 9
 PLANNING & ENGINEERING

DESIGNED
 JAZ
 CHECKED

DRAWN
 JAZ
 REVISED

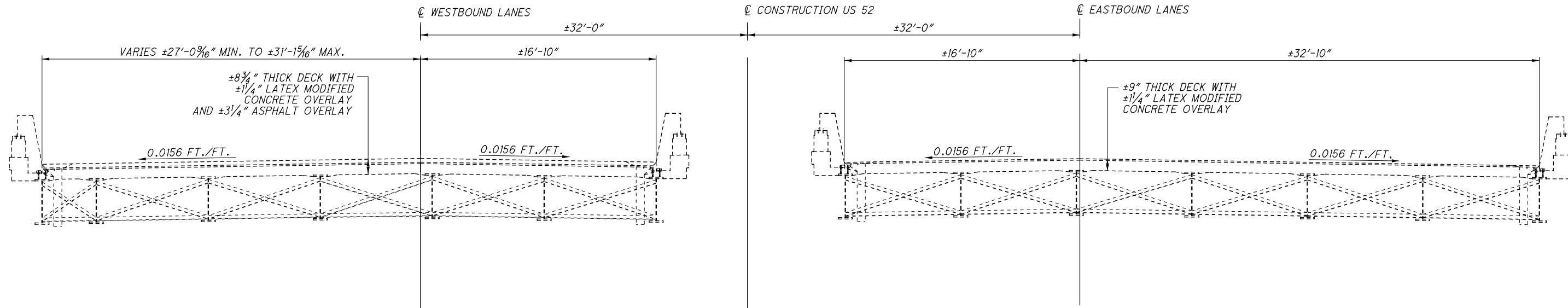
REVIEWED
 MCM
 STRUCTURE FILE NUMBER
 4400453/4400488

DATE
 7/24/20

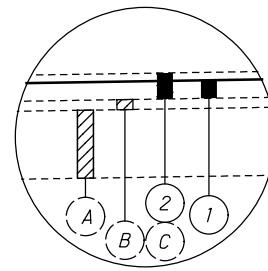
ESTIMATED QUANTITIES
 BRIDGE NO. LAW-52-0682
 OVER SHARED USE PATH

LAW-52-6.82
 AND VARIOUS
 PID No. 102853

I:\ProjectData\Law_52_0682_VAR\Design\Structures\Law52_0682L_R_Sheets\2_0682L_R_ST001.dgn Sheet 10/21/2020 3:38:19 PM jzickkafo



EXISTING TRANSVERSE SECTION

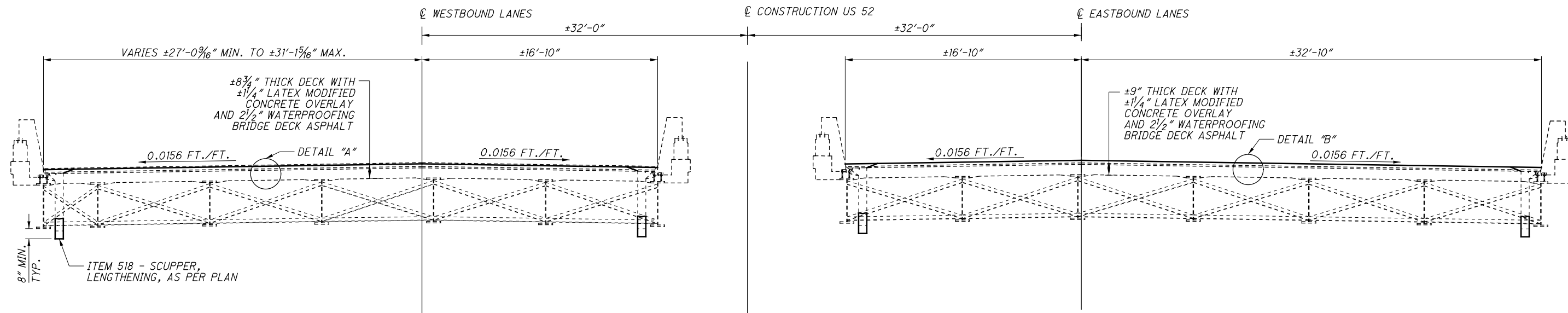
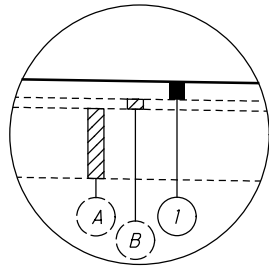


LEGEND:

- ① ITEM 856 - 2 1/2" BRIDGE DECK WATERPROOFING ASPHALT CONCRETE
- ② ITEM 202 - WEARING COURSE REMOVED
- (A) EX. ±8 3/4" BRIDGE DECK
- (B) EX. ±1 1/4" LATEX MODIFIED CONCRETE OVERLAY
- (C) EX. ±3 1/4" ASPHALT CONCRETE OVERLAY

LEGEND:

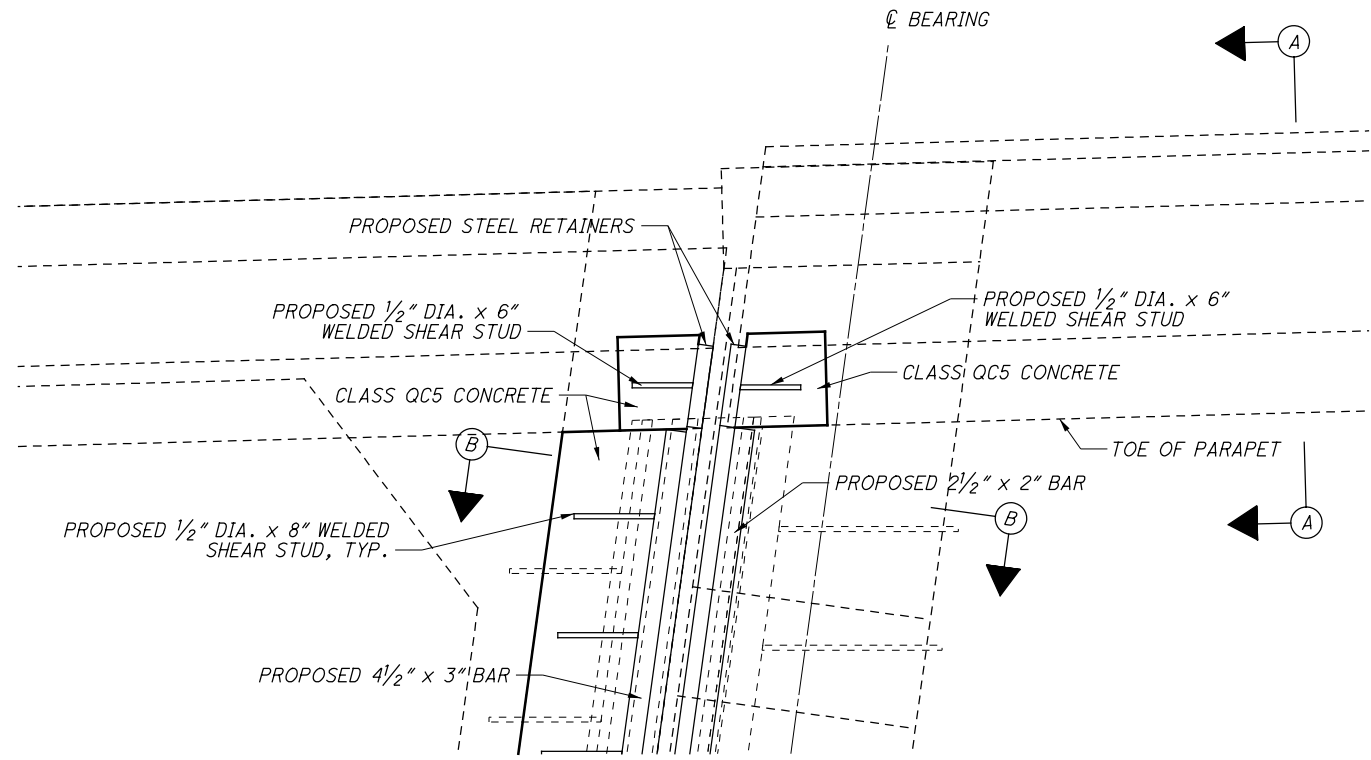
- ① ITEM 856 - 2 1/2" BRIDGE DECK WATERPROOFING ASPHALT CONCRETE
- (A) EX. ±9" BRIDGE DECK
- (B) EX. ±1 1/4" LATEX MODIFIED CONCRETE OVERLAY



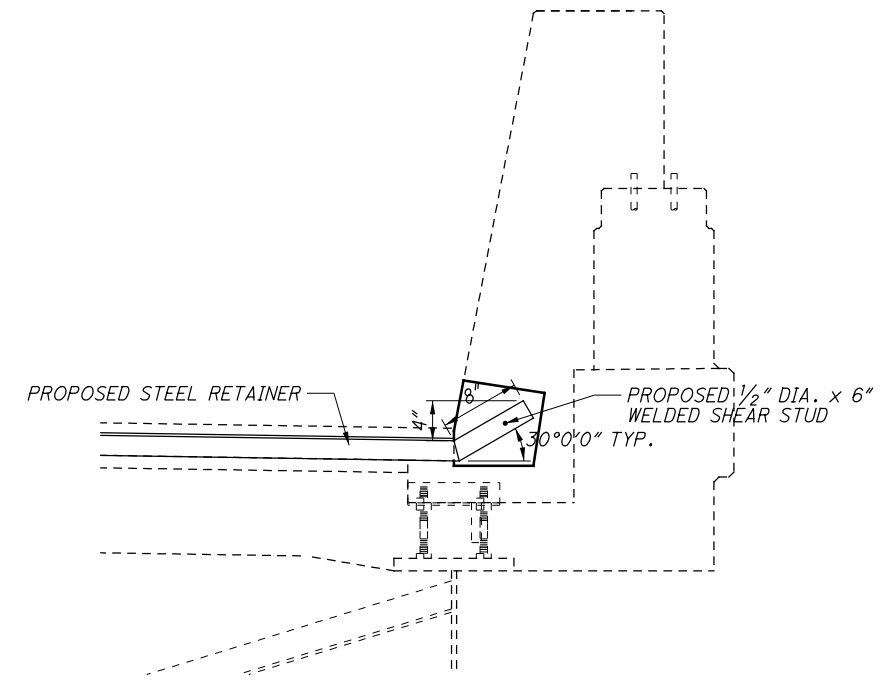
PROPOSED TRANSVERSE SECTION



I:\ProjectData\Law\02853_LAW_52_0682_VAR\Design\Structures\AW052_0682L_R_Sheets\2_0682L_R_SX001.dgn_Sheet 10/27/2020 3:38:19 PM jzickakfo



PROPOSED PLAN VIEW
 APPLIES TO BOTH THE LEFT AND RIGHT PARAPETS
 AT BOTH THE REAR AND FORWARD ABUTMENTS OF
 THE WESTBOUND LANES



SECTION A-A
 APPLIES TO BOTH THE PARAPET AND PARAPET TRANSITION

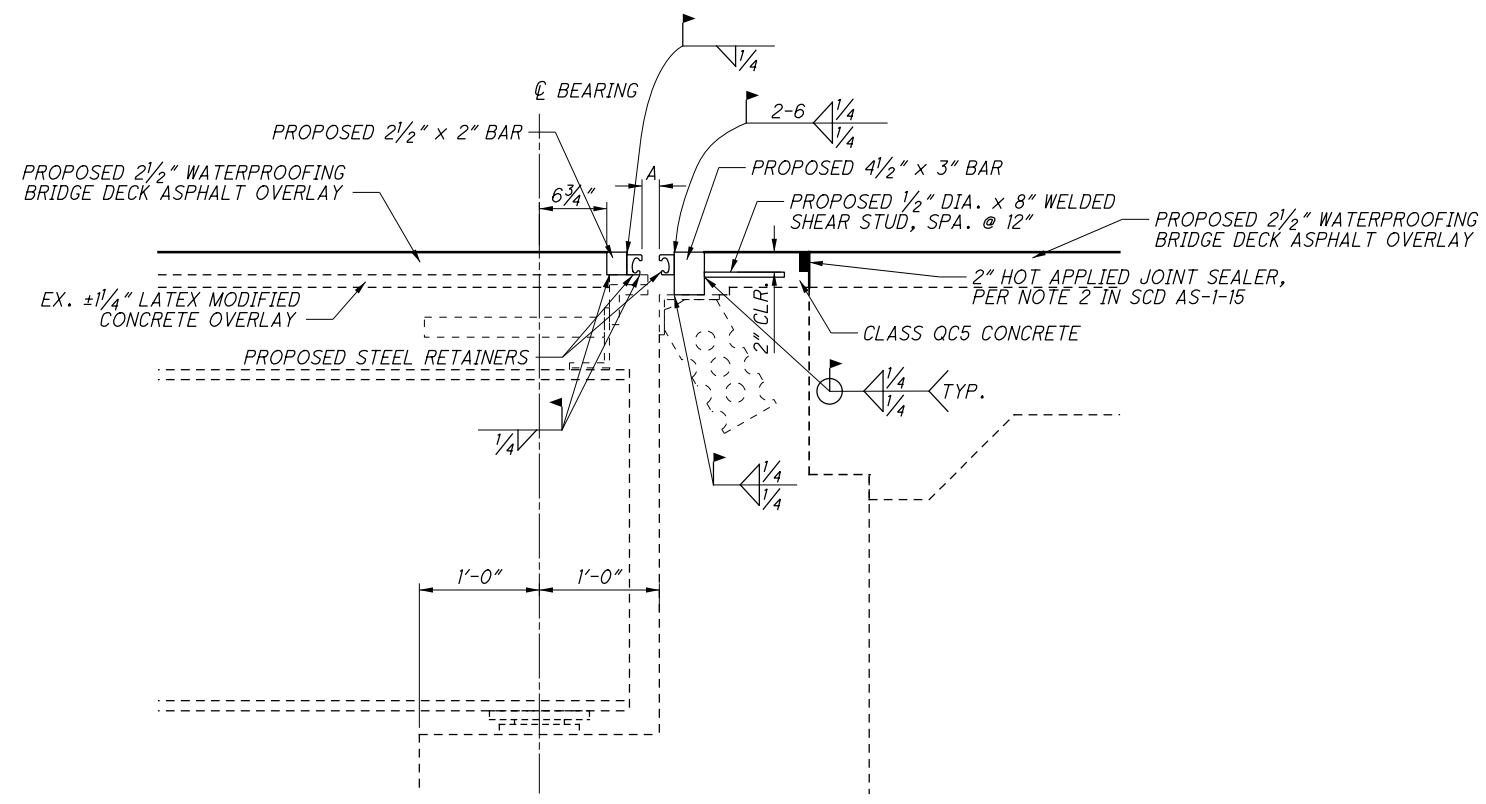
NEOPRENE STRIP SEAL SPECIFICATIONS
 REAR ABUT. A = 1 3/4" @ 60° F
 FWD. ABUT. A = 1 5/8" @ 60° F

MAXIMUM MOVEMENT PERPENDICULAR	MAXIMUM MOVEMENT PARALLEL	JOINT OPENING
INCHES	INCHES	INCHES
4.0	±0.5	0.5-5.0

NOTE: THE PROPOSED JOINT IS DESIGNED FOR A JOINT OPENING OF "A" @ 60° F AND WITH 1/2" WIDE STEEL RETAINERS. THE CONTRACTOR MAY CHOOSE TO USE A DIFFERENT SIZE RETAINER, BUT MUST SUBMIT SHOP DRAWINGS OF PROVISIONS MADE TO MAINTAIN THE JOINT OPENING OF "A" @ 60° F. THESE MUST BE APPROVED BY THE ENGINEER BEFORE WORK CAN BEGIN ON THE JOINT AND SHALL BE NO ADDITIONAL COST TO THE STATE FOR CHANGES MADE BY THE CONTRACTOR.

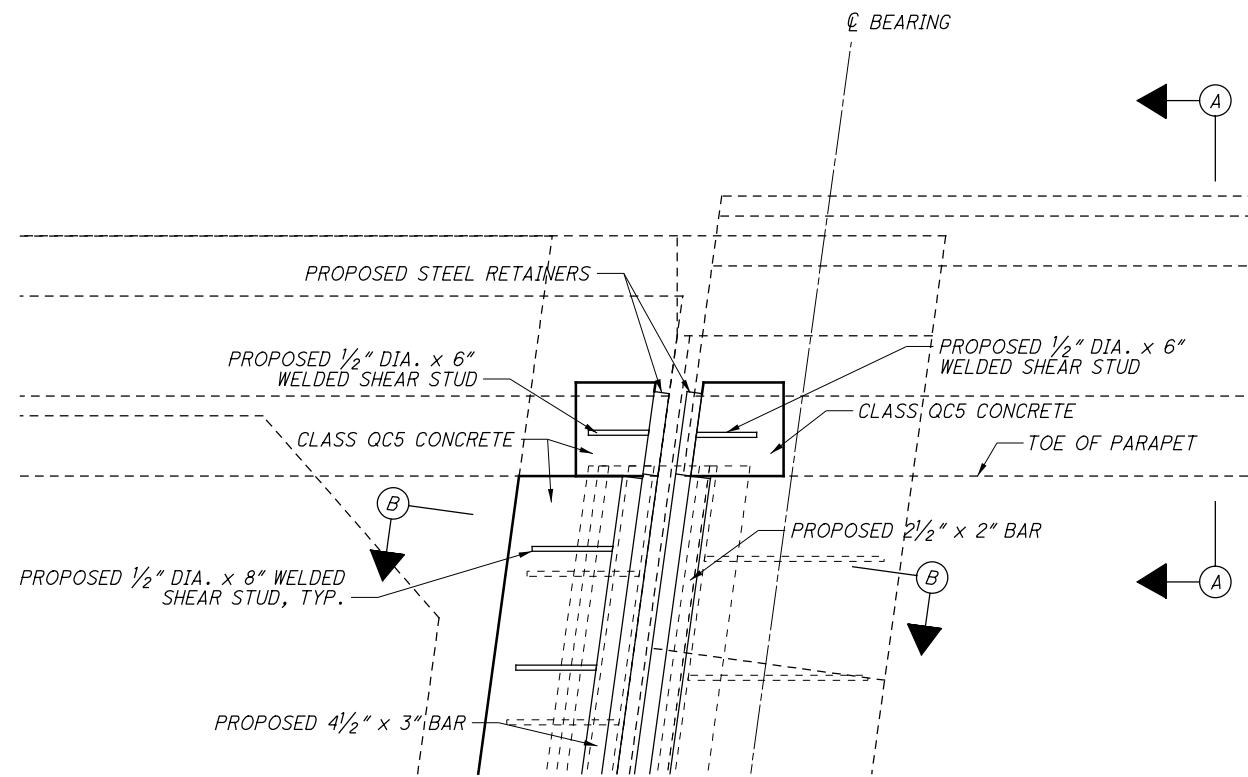
FOR ADDITIONAL DETAILS REFER TO STD. BDG. DWG. GSD-1-96 AND STD. BDG. DWG. EXJ-4-87.

TEMPERATURE	REAR ABUT. DIMENSION "A"	FWD. ABUT. DIMENSION "A"
F	INCHES	INCHES
30	1 13/16	1 7/8
40	1 13/16	1 13/16
50	1 3/4	1 3/4
60	1 3/4	1 5/8
70	1 11/16	1 9/16
80	1 5/8	1 1/2
90	1 5/8	1 7/16



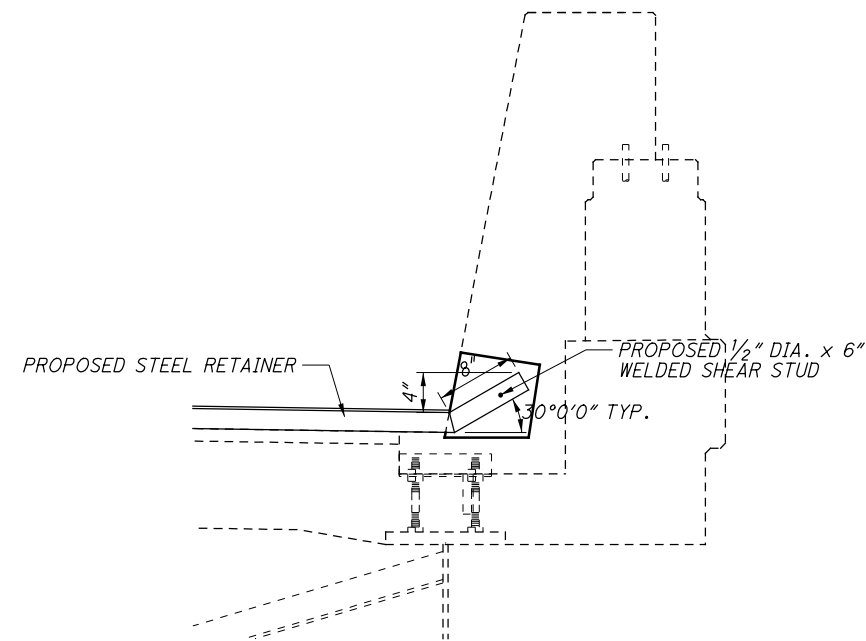
SECTION B-B
 APPLIES TO BOTH THE REAR AND FORWARD ABUTMENTS

DESIGNED JAZ CHECKED	DRAWN JAZ REVISED	REVIEWED MCM	DATE 7/24/20	DESIGN AGENCY ODOT DISTRICT 9 PLANNING & ENGINEERING
			STRUCTURE FILE NUMBER 4400453	
EXPANSION JOINT DETAILS - LEFT BRIDGE				
BRIDGE NO. LAW-52-0682L OVER SHARED USE PATH				
LAW-52-6.82 AND VARIOUS PID No. 102853				
8 / 10				
35 57				



PROPOSED PLAN VIEW

APPLIES TO BOTH THE LEFT AND RIGHT PARAPETS AT BOTH THE REAR AND FORWARD ABUTMENTS OF THE EASTBOUND LANES



SECTION A-A

APPLIES TO BOTH THE PARAPET AND PARAPET TRANSITION

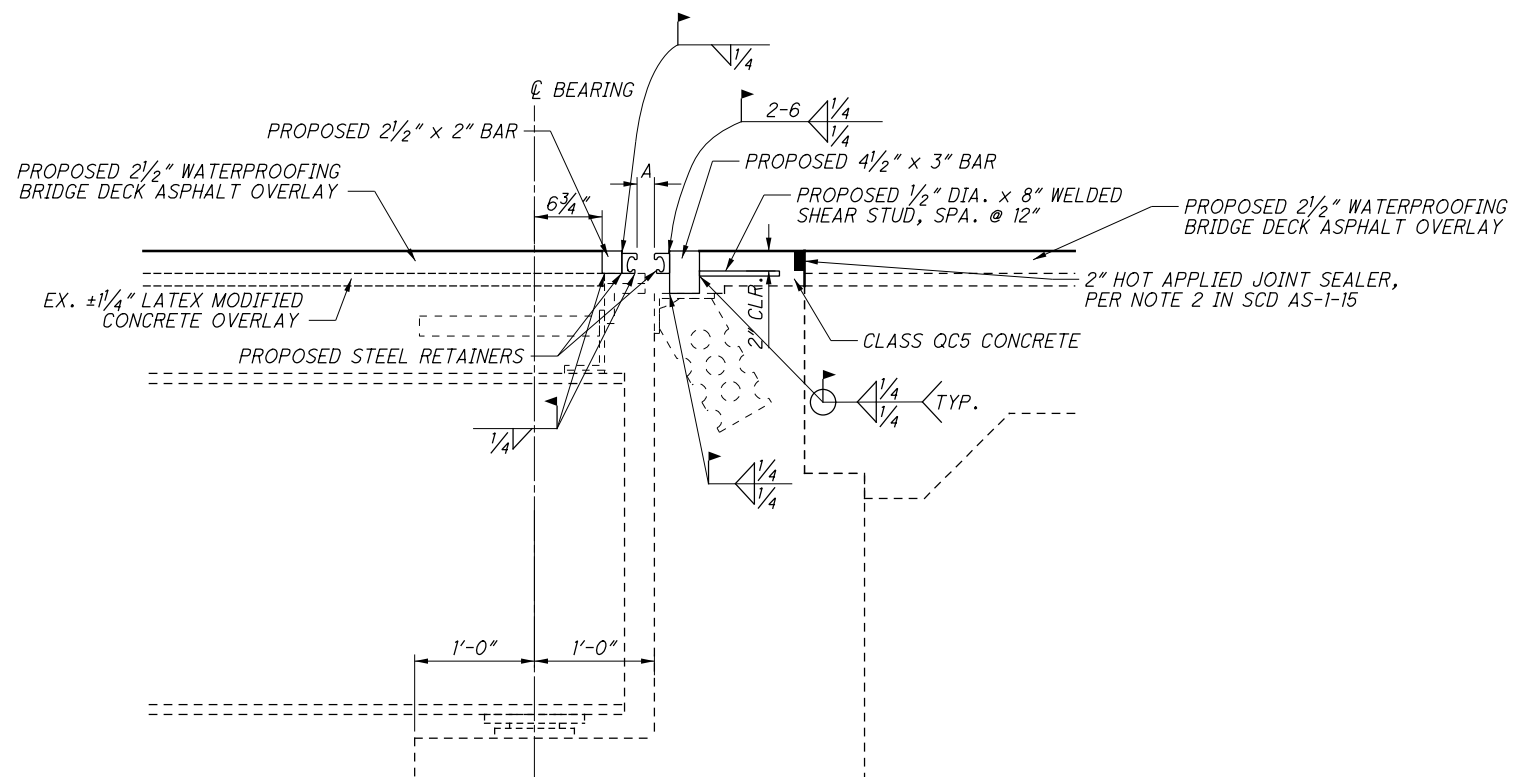
NEOPRENE STRIP SEAL SPECIFICATIONS
 REAR ABUT. A = 1 1/16" @ 60° F
 FWD. ABUT. A = 1 9/16" @ 60° F

MAXIMUM MOVEMENT PERPENDICULAR	MAXIMUM MOVEMENT PARALLEL	JOINT OPENING
INCHES	INCHES	INCHES
4.0	±0.5	0.5-5.0

NOTE: THE PROPOSED JOINT IS DESIGNED FOR A JOINT OPENING OF "A" @ 60° F AND WITH 1/2" WIDE STEEL RETAINERS. THE CONTRACTOR MAY CHOOSE TO USE A DIFFERENT SIZE RETAINER, BUT MUST SUBMIT SHOP DRAWINGS OF PROVISIONS MADE TO MAINTAIN THE JOINT OPENING OF "A" @ 60° F. THESE MUST BE APPROVED BY THE ENGINEER BEFORE WORK CAN BEGIN ON THE JOINT AND SHALL BE NO ADDITIONAL COST TO THE STATE FOR CHANGES MADE BY THE CONTRACTOR.

FOR ADDITIONAL DETAILS REFER TO STD. BDG. DWG. GSD-1-96 AND STD. BDG. DWG. EXJ-4-87.

TEMPERATURE	REAR ABUT. DIMENSION "A"	FWD. ABUT. DIMENSION "A"
F	INCHES	INCHES
30	1 13/16	1 7/8
40	1 13/16	1 13/16
50	1 3/4	1 3/4
60	1 11/16	1 5/8
70	1 11/16	1 9/16
80	1 5/8	1 1/2
90	1 9/16	1 3/8



SECTION B-B

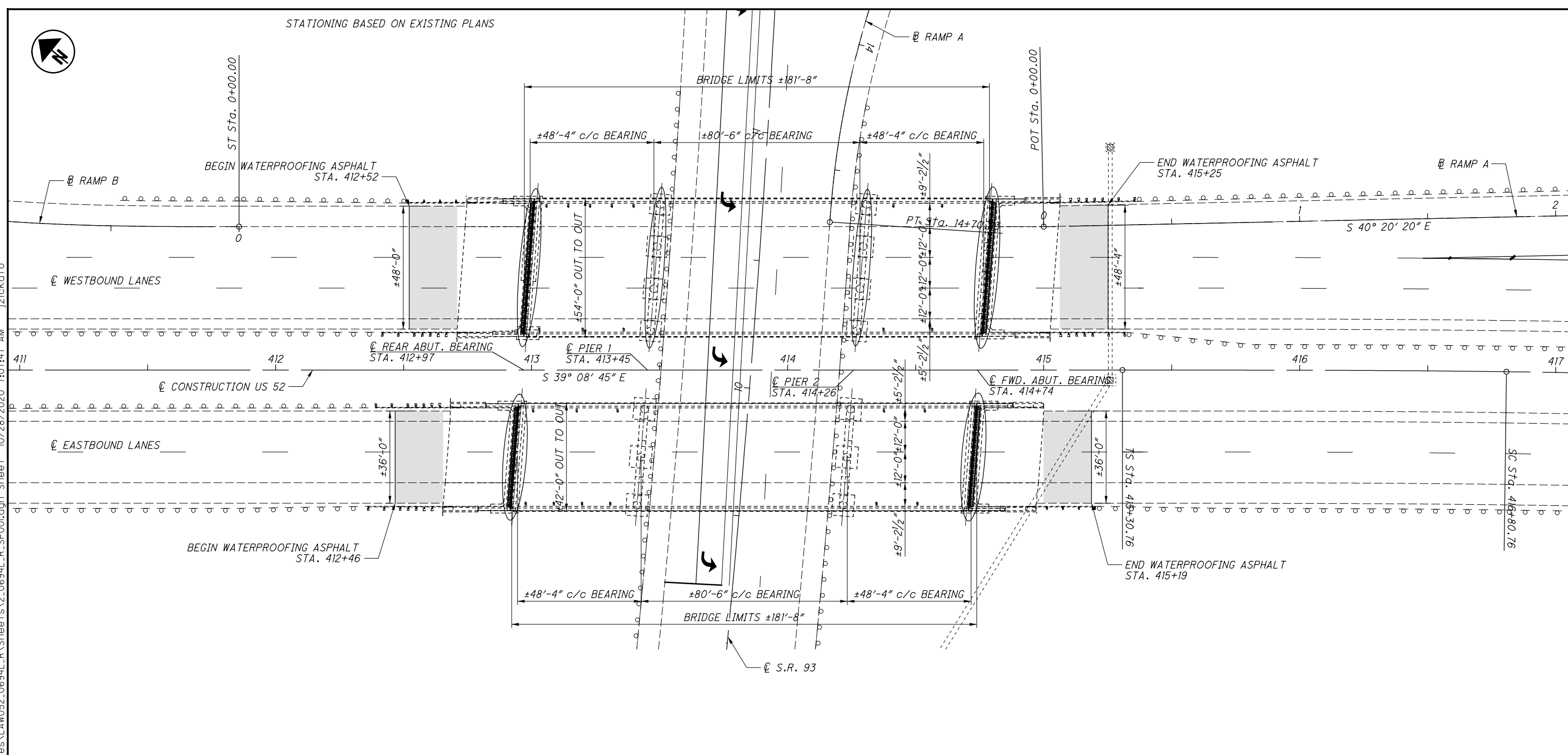
APPLIES TO BOTH THE REAR AND FORWARD ABUTMENTS

I:\ProjectData\Law\02853_LAW_52_0682_VAR\Design\Structures\Law052_0682L_R_Sheets\2_0682L_R_SX002.dgn Sheet 10/27/2020 3:38:21PM jzickafa

STATIONING BASED ON EXISTING PLANS



I:\ProjectData\Law\02853_LAW_52_0682_VAR\Design\Structures\LA052_0694L_R_Sheets\2_0694L_R_SPO0.dgn Sheet 10/28/2020 7:07:47 AM jzickofo



EXISTING STRUCTURE

TYPE: CONTINUOUS STEEL BEAM WITH REINFORCED CONCRETE DECK AND SUBSTRUCTURE

SPANS: LEFT: ±48'-4" - ±80'-6" - ±48'-4" c/c BEARINGS
 RIGHT: ±48'-4" - ±80'-6" - ±48'-4" c/c BEARINGS

ROADWAY: LEFT: ±54'-0" o/o
 RIGHT: ±42'-0" o/o

LOADING: HS20

SKEW: ±4°25'30" LEFT FORWARD

WEARING SURFACE: LEFT: ±2½" ASPHALT CONCRETE
 RIGHT: ±2½" ASPHALT CONCRETE

APPROACH SLABS: ±25'-0" LONG

ALIGNMENT: TANGENT

CROWN: NORMAL

STRUCTURAL FILE NUMBER: 4400518L & 4400542R

DATE BUILT: LEFT: 1960 RIGHT: 1962

DISPOSITION: REHABILITATION

PROPOSED WORK

REMOVE PORTIONS OF THE ABUTMENTS, PARAPETS, POLYMER MODIFIED JOINTS, AND SLIDING PLATE JOINTS AS DETAILED

PLACE PROPOSED EXPANSION JOINT AND CAST BACK ABUTMENTS AND PARAPETS

REMOVE ±2½" OF ASPHALT OVERLAY ON THE BRIDGE DECKS AND APPROACH SLABS

PATCH BRIDGE DECKS AND APPROACH SLABS AND THEN OVERLAY THEM WITH 2½" OF ITEM 856 - BRIDGE DECK WATERPROOFING ASPHALT CONCRETE

PATCH PORTIONS OF ABUTMENTS & PIERS SHOWN ABOVE WITH EMBEDDED GALVANIC ANODE PROTECTION AS DIRECTED BY THE ENGINEER

REFURBISH BEARINGS AND EXTEND SCUPPERS

LEGEND

- CONCRETE PATCHING WITH EMBEDDED GALVANIC ANODE PROTECTION, AS PER S.S. 844. (ANODE SPACING = 12", MIN. 1 ANODE PER PATCHING AREA). SEE DETAIL ON SHEET 278.
- BUTT JOINT PER SCD BP-3.1

DESIGN TRAFFIC:
 2021 ADT = 16,500 2021 ADTT = 3,630
 2041 ADT = 18,000 2041 ADTT = 3,960
 DIRECTIONAL DISTRIBUTION = 61%

DESIGN AGENCY ODOT DISTRICT 9 PLANNING & ENGINEERING	DATE 7/24/20	REVIEWED MCM	DRAWN JAZ	DESIGNED JAZ
STRUCTURE FILE NUMBER 4400518/4400542	S 40° 20' 20" E	CHECKED JAZ	REVISED	LAWRENCE COUNTY STA. 412+95 STA. 414+76
LAWRENCE COUNTY STA. 412+95 STA. 414+76	LAWRENCE COUNTY STA. 412+95 STA. 414+76	LAWRENCE COUNTY STA. 412+95 STA. 414+76	LAWRENCE COUNTY STA. 412+95 STA. 414+76	LAWRENCE COUNTY STA. 412+95 STA. 414+76
SITE PLAN BRIDGE NO. LAW-52-0694 OVER S.R. 93	LAW-52-6.82 AND VARIOUS PID No. 102853			
1 / 8	38 57			

I:\ProjectData\LA02853.LAW\52_0682_VAR\Design\Structures\LA052_0694L_R_Sheets\2_0694L_R_S0001.dgn_Sheet 10/27/2020 3:38:25 PM jzickofo

CALC: JAZ DATE: 5/18/2020
 CHECKED: MCM DATE: 7/24/2020

ESTIMATED QUANTITIES LAW-52-0694L (01/NFA/BR)									
ITEM	EXTENSION	TOTAL	UNIT	DESCRIPTION	ABUT.	PIERS	SUPER.	GEN.	SEE SHEET
202	11203	LS		PORTIONS OF STRUCTURE REMOVED, OVER 20 FOOT SPAN, AS PER PLAN				LS	2/8
202	23500	1299	SY	WEARING COURSE REMOVED			1018	281	
511	71100	2	CY	CONCRETE, MISC.: CLASS QC5 CONCRETE	1			1	
516	11211	104	FT	STRUCTURAL EXPANSION JOINT INCLUDING ELASTOMERIC STRIP SEAL, AS PER PLAN				104	2/8
516	31010	102	FT	2" DEEP JOINT SEALER				102	
516	45305	14	EACH	REFURBISH BEARING DEVICE, AS PER PLAN			14		2/8
516	47001	LS		JACKING AND TEMPORARY SUPPORT OF SUPERSTRUCTURE, AS PER PLAN			LS		2/8
518	12901	12	EACH	SCUPPER, LENGTHENING, AS PER PLAN			12		2/8
519	12300	131	SY	PATCHING CONCRETE BRIDGE DECK - TYPE B			102	29	
844	10000	300	SF	CONCRETE PATCHING WITH GALVANIC ANODE PROTECTION	200	100			
856	10000	105	CY	BRIDGE DECK WATERPROOFING ASPHALT CONCRETE			71	34	

CALC: JAZ DATE: 5/18/2020
 CHECKED: MCM DATE: 7/24/2020

ESTIMATED QUANTITIES LAW-52-0694R (01/NFA/BR)									
ITEM	EXTENSION	TOTAL	UNIT	DESCRIPTION	ABUT.	PIERS	SUPER.	GEN.	SEE SHEET
202	11203	LS		PORTIONS OF STRUCTURE REMOVED, OVER 20 FOOT SPAN, AS PER PLAN				LS	2/8
202	23500	990	SY	WEARING COURSE REMOVED			776	214	
511	71100	2	CY	CONCRETE, MISC.: CLASS QC5 CONCRETE	1			1	
516	11211	80	FT	STRUCTURAL EXPANSION JOINT INCLUDING ELASTOMERIC STRIP SEAL, AS PER PLAN				80	2/8
516	31010	78	FT	2" DEEP JOINT SEALER				78	
516	45305	12	EACH	REFURBISH BEARING DEVICE, AS PER PLAN			12		2/8
516	47001	LS		JACKING AND TEMPORARY SUPPORT OF SUPERSTRUCTURE, AS PER PLAN			LS		2/8
518	12901	11	EACH	SCUPPER, LENGTHENING, AS PER PLAN			11		2/8
519	12300	100	SY	PATCHING CONCRETE BRIDGE DECK - TYPE B			78	22	
844	10000	300	SF	CONCRETE PATCHING WITH GALVANIC ANODE PROTECTION	300				
856	10000	80	CY	BRIDGE DECK WATERPROOFING ASPHALT CONCRETE			54	26	

DESIGN AGENCY
 ODOT DISTRICT 9
 PLANNING & ENGINEERING

DATE
 7/24/20
 REVIEWED
 MCM
 STRUCTURE FILE NUMBER
 4400518/4400542

DRAWN
 JAZ
 REVISED

DESIGNED
 JAZ
 CHECKED

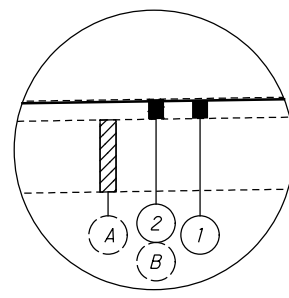
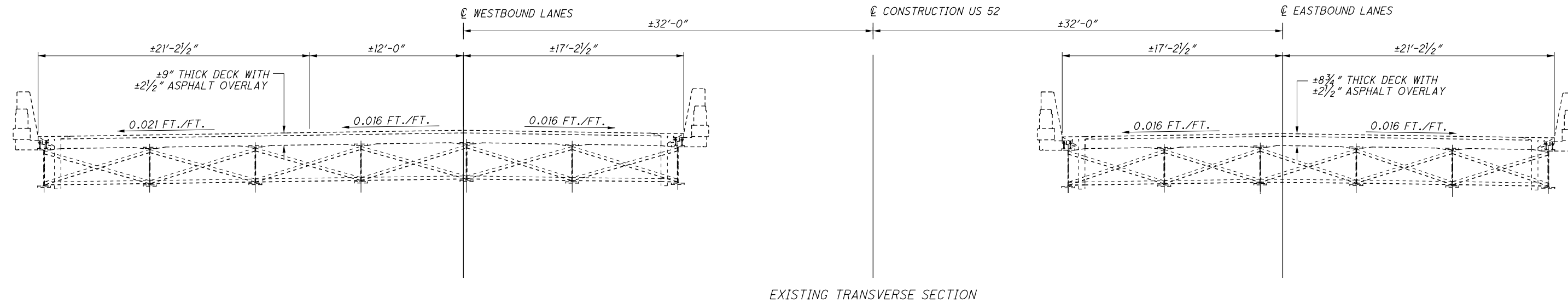
ESTIMATED QUANTITIES
 BRIDGE NO. LAW-52-0694
 OVER S.R. 93

LAW-52-6.82
 AND VARIOUS
 PID No. 102853

3 / 8

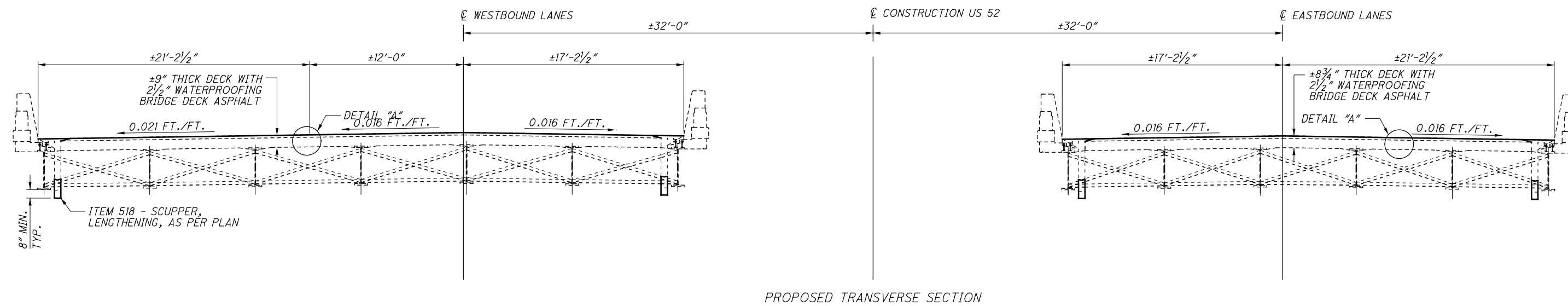
40
 57

I:\ProjectData\Law\02853_LAW_52_0682_VAR\Design\Structures\Law052_0694L_R_Sheets\2_0694L_R_ST001.dgn Sheet 10/21/2020 3:38:27 PM jzickofo



LEGEND:

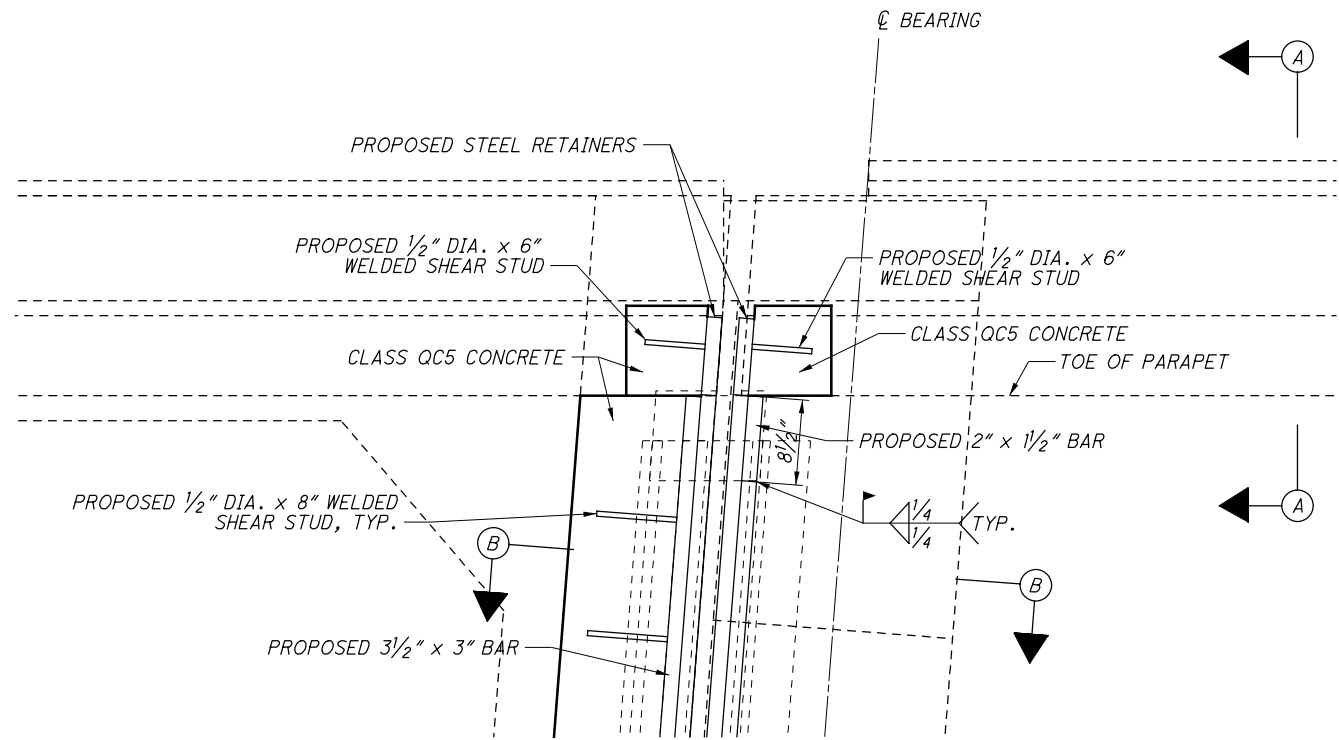
- ① ITEM 856 - 2 1/2" BRIDGE DECK WATERPROOFING ASPHALT CONCRETE
- ② ITEM 202 - WEARING COURSE REMOVED
- Ⓐ EX. ±9" BRIDGE DECK (LEFT BRIDGE)
EX. ±8 3/4" BRIDGE DECK (RIGHT BRIDGE)
- Ⓑ EX. ±2 1/2" ASPHALT CONCRETE OVERLAY



DESIGNED JAZ	DRAWN JAZ	REVIEWED MCM	DATE 7/24/20	DESIGN AGENCY ODOT DISTRICT 9
CHECKED	REVISED	STRUCTURE FILE NUMBER 4400518/4400542		PLANNING & ENGINEERING
TRANSVERSE SECTION				
BRIDGE NO. LAW-52-0694				
OVER S.R. 93				
LAW-52-6.82 AND VARIOUS PID No. 102853				
6 / 8				
43 57				

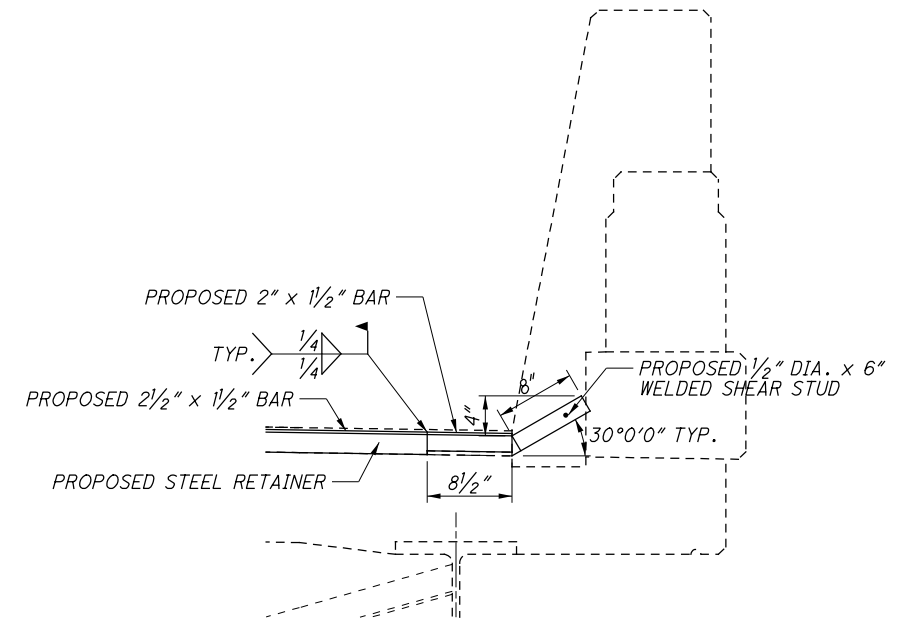


I:\ProjectData\Law\02853_LAW_52_0682_VAR\Design\Structures\AW052_0694L_R_Sheets\2_0694L_R_SX001.dgn_Sheet 10/27/2020 3:38:28 PM jzickofo



PROPOSED PLAN VIEW

APPLIES TO BOTH THE LEFT AND RIGHT PARAPETS AT BOTH THE REAR AND FORWARD ABUTMENTS OF THE LEFT AND RIGHT BRIDGES



SECTION A-A

APPLIES TO BOTH THE PARAPET AND PARAPET TRANSITION

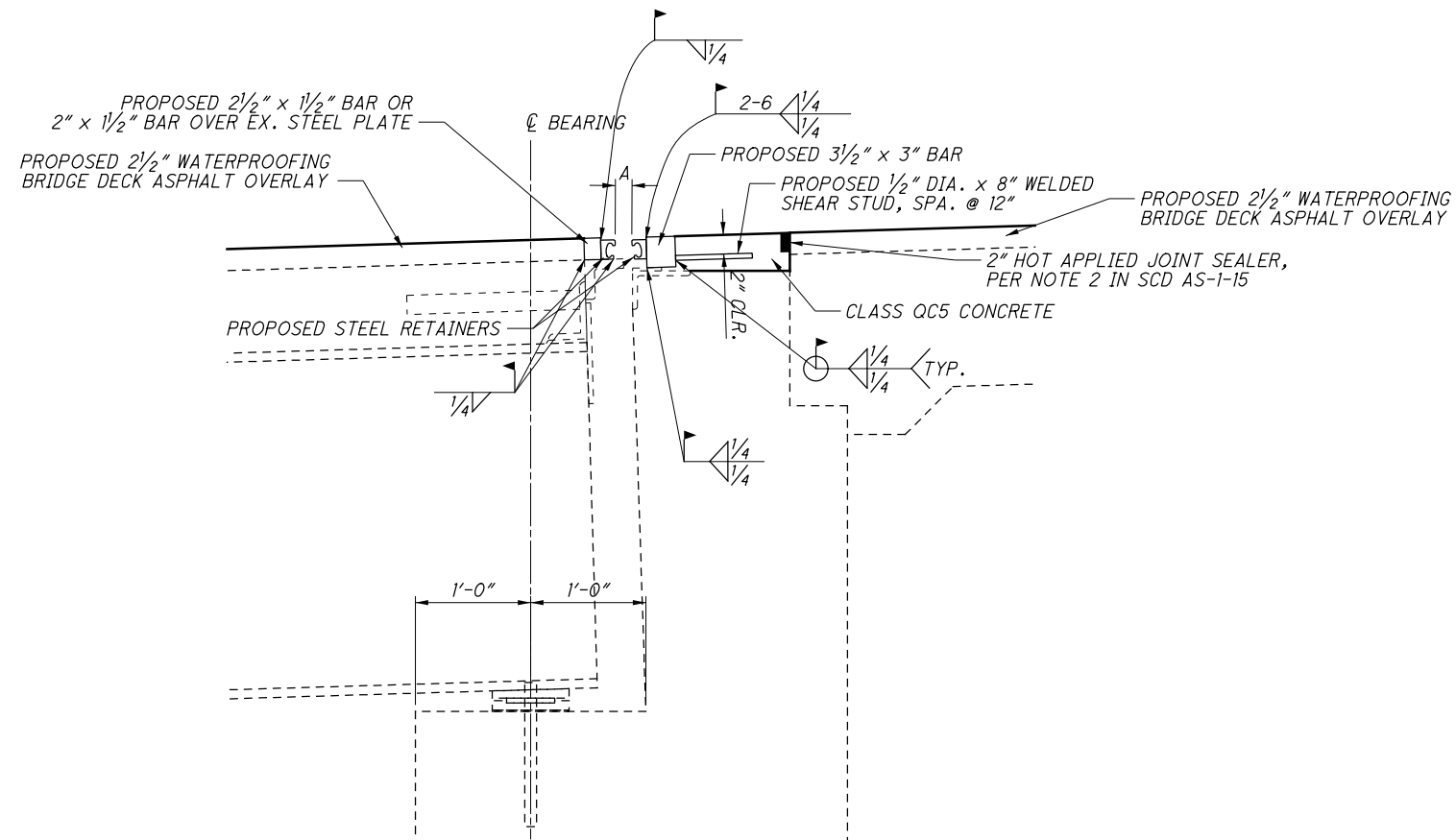
NEOPRENE STRIP SEAL SPECIFICATIONS
 REAR ABUT. A = 1 1/16" @ 60° F
 FWD. ABUT. A = 1 5/8" @ 60° F

MAXIMUM MOVEMENT PERPENDICULAR	MAXIMUM MOVEMENT PARALLEL	JOINT OPENING
INCHES	INCHES	INCHES
4.0	±0.5	0.5-5.0

NOTE: THE PROPOSED JOINT IS DESIGNED FOR A JOINT OPENING OF "A" @ 60° F AND WITH 1/2" WIDE STEEL RETAINERS. THE CONTRACTOR MAY CHOOSE TO USE A DIFFERENT SIZE RETAINER, BUT MUST SUBMIT SHOP DRAWINGS OF PROVISIONS MADE TO MAINTAIN THE JOINT OPENING OF "A" @ 60° F. THESE MUST BE APPROVED BY THE ENGINEER BEFORE WORK CAN BEGIN ON THE JOINT AND SHALL BE NO ADDITIONAL COST TO THE STATE FOR CHANGES MADE BY THE CONTRACTOR.

FOR ADDITIONAL DETAILS REFER TO STD. BDG. DWG. GSD-1-96 AND STD. BDG. DWG. EXJ-4-87.

TEMPERATURE	REAR ABUT. DIMENSION "A"	FWD. ABUT. DIMENSION "A"
F	INCHES	INCHES
30	1 13/16	1 7/8
40	1 13/16	1 13/16
50	1 3/4	1 11/16
60	1 11/16	1 5/8
70	1 11/16	1 1/2
80	1 5/8	1 3/8
90	1 9/16	1 5/16



SECTION B-B

APPLIES TO BOTH THE REAR AND FORWARD ABUTMENTS OF BOTH THE LEFT AND RIGHT BRIDGES

DESIGNED JAZ CHECKED	DRAWN JAZ REVISED	REVIEWED MCM	DATE 7/24/20	DESIGN AGENCY ODOT DISTRICT 9 PLANNING & ENGINEERING
			STRUCTURE FILE NUMBER 4400518/4400542	
EXPANSION JOINT DETAILS				
BRIDGE NO. LAW-52-0694 OVER S.R. 93				
LAW-52-6.82 AND VARIOUS PID No. 102853				
7/8				
44 57				