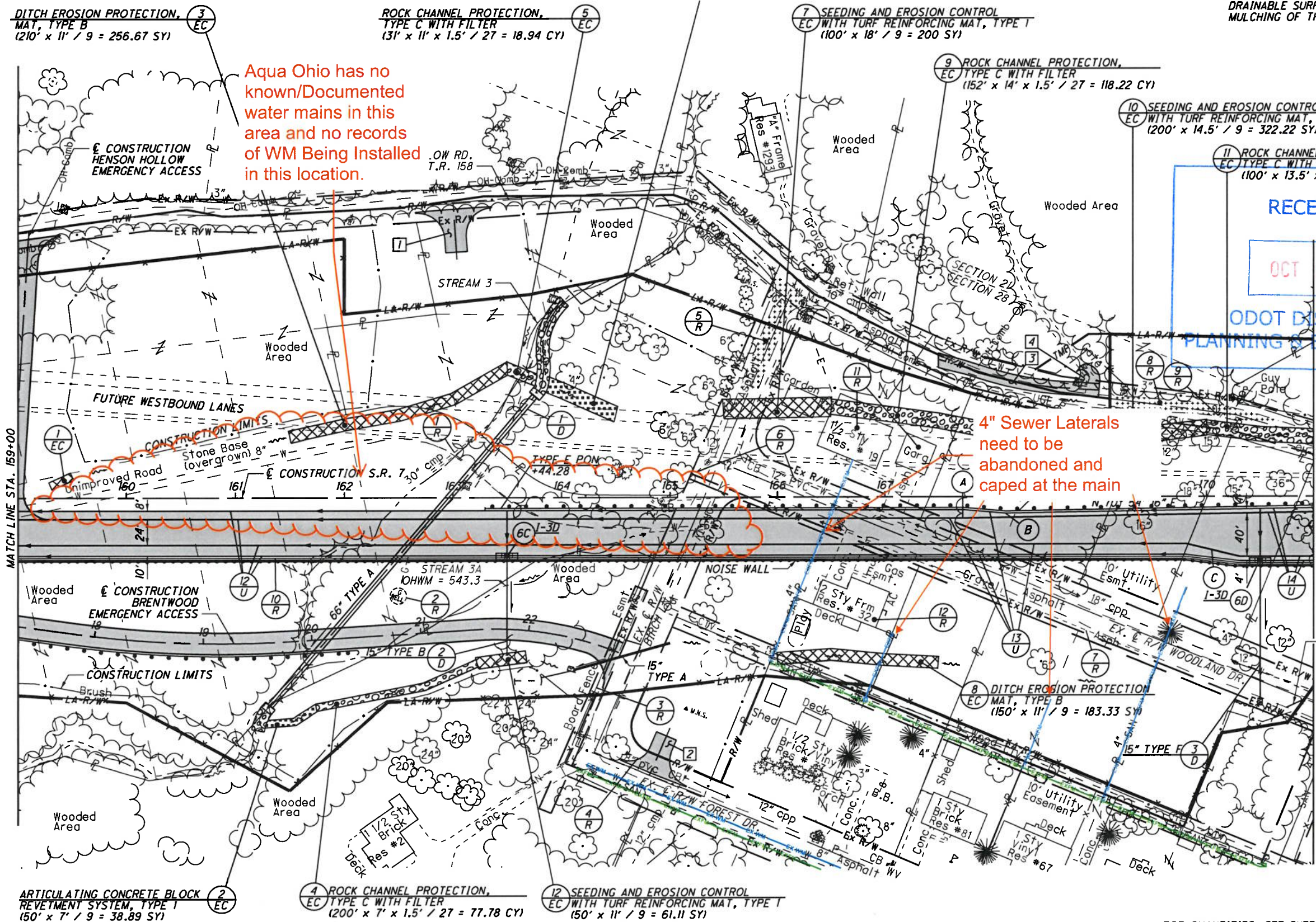


# Aqua Ohio - Water & Sewer Relocation Plans

- PAVEMENT REMOVED  
 QUANTITIES ARE INCLUDED IN REFERENCE NUMBERS 5-R AND 8-R FOR THE REMOVAL OF EXISTING PAVEMENT, REGRADING TO ENSURE A DRAINABLE SURFACE AND SEEDING AND MULCHING OF THE AREA SHOWN.



Aqua Ohio has no known/Documented water mains in this area and no records of WM Being Installed in this location.

4" Sewer Laterals need to be abandoned and capped at the main

RECEIVED  
 OCT 18 2024  
 ODOT DISTRICT 9  
 PLANNING & ENGINEERING

Purple Line - 4" San. Sewer to be Abandoned  
 Green Line - San. Sewer to Remain  
 Blue Line - 8" Water line to Remain

**3** DITCH EROSION PROTECTION, MAT, TYPE B  
 (210' x 11' / 9 = 256.67 SY)

**5** ROCK CHANNEL PROTECTION, TYPE C WITH FILTER  
 (31' x 11' x 1.5' / 27 = 18.94 CY)

**7** SEEDING AND EROSION CONTROL EC WITH TURF REINFORCING MAT, TYPE T  
 (100' x 18' / 9 = 200 SY)

**9** ROCK CHANNEL PROTECTION, EC TYPE C WITH FILTER  
 (152' x 14' x 1.5' / 27 = 118.22 CY)

**10** SEEDING AND EROSION CONTROL EC WITH TURF REINFORCING MAT, TYPE T  
 (200' x 14.5' / 9 = 322.22 SY)

**11** ROCK CHANNEL PROTECTION, EC TYPE C WITH FILTER  
 (100' x 13.5' x 1.5' / 27 = 75 CY)

**1** SEEDING AND EROSION CONTROL EC WITH TURF REINFORCING MAT, TYPE T  
 (20' x 7.5' / 9 = 16.67 SY)

**2** ARTICULATING CONCRETE BLOCK REVETMENT SYSTEM, TYPE 1  
 (150' x 7' / 9 = 38.89 SY)

**2** ARTICULATING CONCRETE BLOCK REVETMENT SYSTEM, TYPE 1  
 (150' x 7' / 9 = 38.89 SY)

**4** ROCK CHANNEL PROTECTION, TYPE C WITH FILTER  
 (200' x 7' x 1.5' / 27 = 77.78 CY)

**12** SEEDING AND EROSION CONTROL EC WITH TURF REINFORCING MAT, TYPE T  
 (50' x 11' / 9 = 61.11 SY)

- (A) - STA. 167+72.52  
BEGIN PAVEMENT TAPER, 20' RT.  
BEGIN SHOULDER TAPER, 12' RT.
- (B) - STA. 168+12.52  
END PAVEMENT TAPER, 56' RT.  
END SHOULDER TAPER, 15.33' RT.

- (C) - STA. 169+80.98  
BEGIN PAVEMENT TAPER, 44' RT.  
BEGIN SHOULDER TAPER, 54' RT.
- (C) - STA. 170+30.98  
END PAVEMENT TAPER, 56' RT.  
END SHOULDER TAPER, 60' RT.

- PROPOSED PAVEMENT

FOR QUANTITIES, SEE SHEETS 71-81  
 FOR PROFILE, SEE SHEET 104  
 FOR BRENTWOOD EMERGENCY ACCESS, SEE SHEET 465  
 FOR INTERSECTION DETAILS, SEE SHEETS 623  
 FOR DRIVE DETAILS, SEE SHEETS 630-638  
 FOR CULVERT DETAILS, SEE SHEETS 652-655  
 FOR UNDERDRAIN TABLES, SEE SHEETS 674-678  
 FOR TRAFFIC CONTROL PLAN, SEE SHEETS 713-733A  
 FOR FENCE TABLES, SEE SHEETS 1039-1041

U:\173608714\LA\75923\roadway\sheet\75923GP005-2A.dgn 5/21/2024 4:49:53 PM SL Parker

PLAN - S.R. 7  
 STA. 159+00 TO STA. 171+00

LAW-7-2.17



**CURVE DATA**  
S.R. 7  
CURVE NO. 9

P.I. STA. 387+47.15     $\theta_s = 3^\circ 44' 12''$   
 $\Delta = 46^\circ 04' 34''$  (LT)     $L_s = 300.00'$   
 $D_c = 2^\circ 29' 28''$      $T_s = 1,128.77'$   
 $R = 2,300.00'$      $LT = 200.04'$   
 $T = 805.51'$      $ST = 100.04'$   
 $L = 1,549.62'$      $e_{max} = 6.20\%$   
 $E = 136.98'$     CS STA. 394+68.00  
 TS STA. 376+18.38    ST STA. 397+68.00  
 SC STA. 379+18.38

— SAN — SAN — PROPOSED FORCE MAIN  
 — — — — — EXISTING FORCE MAIN

**CURVE DATA**  
S.R. 7 WESTBOUND LANES  
@ CURVE NO. 1

P.I. STA. 399+82.71  
 $\Delta = 4^\circ 17' 32''$  (LT)  
 $D_c = 1^\circ 00' 00''$   
 $R = 5,729.58'$   
 $T = 214.71'$   
 $L = 429.22'$   
 $E = 4.02'$   
 $e_{max} = 2.90\%$   
 PC STA. = 397+68.00  
 PT STA. = 401+97.22

ALIGNMENT=SR 7 CL  
 STATION=387+06.86  
 OFFSET=-101.037  
 NORTHING=163476.0050  
 EASTING=2003907.1166

ALIGNMENT=SR 7 CL  
 STATION=387+24.39  
 OFFSET=98.010  
 NORTHING=163276.7690  
 EASTING=2003922.2978

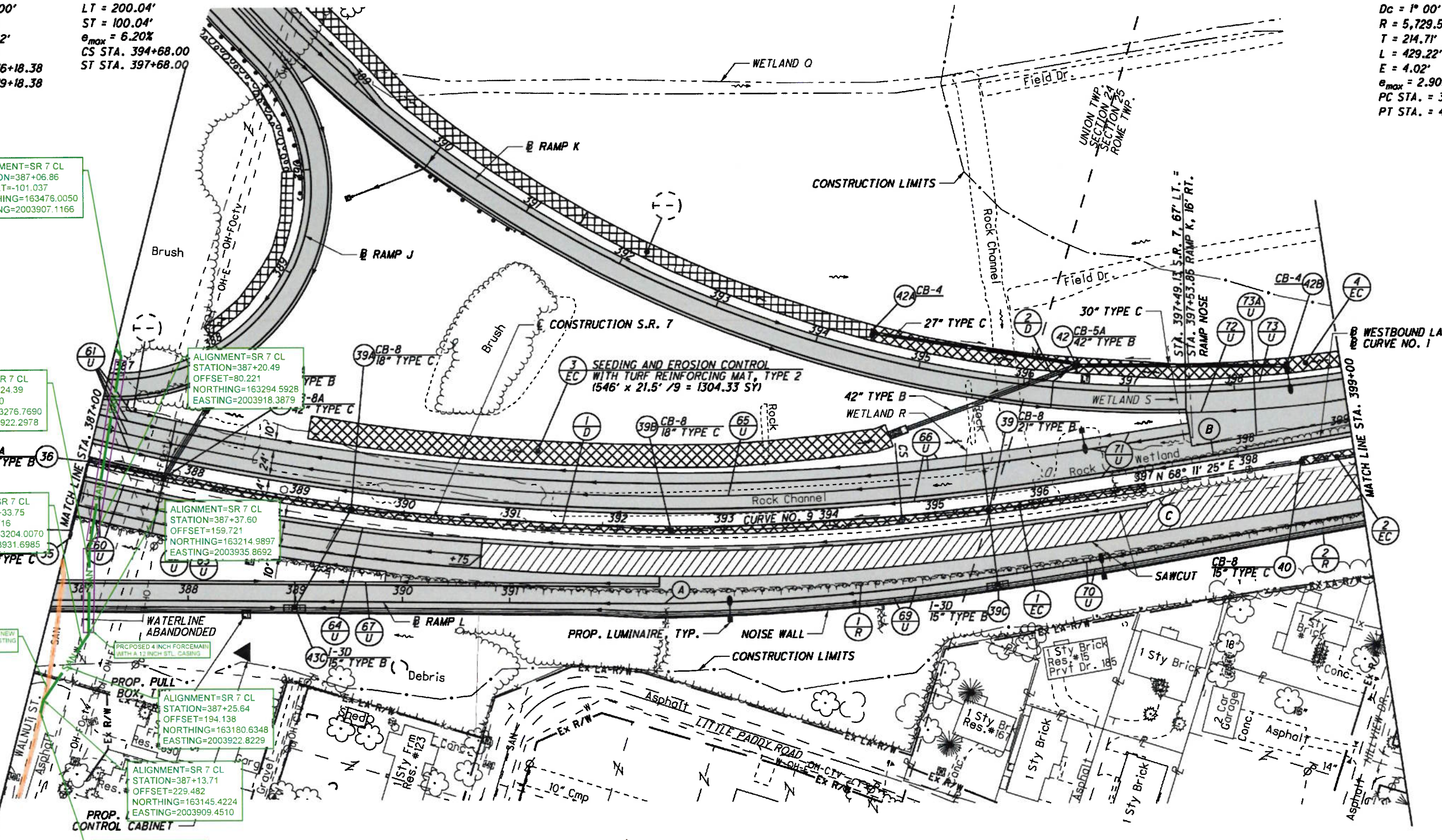
ALIGNMENT=SR 7 CL  
 STATION=387+33.75  
 OFFSET=170.716  
 NORTHING=163204.0070  
 EASTING=2003931.6985

ALIGNMENT=SR 7 CL  
 STATION=387+37.60  
 OFFSET=159.721  
 NORTHING=163214.9897  
 EASTING=2003935.8692

ALIGNMENT=SR 7 CL  
 STATION=387+25.64  
 OFFSET=194.138  
 NORTHING=163180.6348  
 EASTING=2003922.8229

ALIGNMENT=SR 7 CL  
 STATION=387+13.71  
 OFFSET=229.482  
 NORTHING=163145.4224  
 EASTING=2003909.4510

ALIGNMENT=SR 7 CL  
 STATION=387+14.06  
 OFFSET=241.646  
 NORTHING=163133.2546  
 EASTING=2003909.6507



- (A) STA. 392+40.09 S. BEGIN PAVEMENT TA RAMP NOSE END RAMP
- (B) P.C. STA. 397+68.00 BEGIN @ WESTBOUND LANES = S.T. STA. 397+68.00, S.R. 7, 20' LT.
- (C) 5ft SAWCUT TAPER TO MEET EXISTING SHOULDER WIDTH.

- (1) DITCH EROSION PROTECTION MAT, TYPE B (1000' x 7.5' / 9 = 833.33 SY)
- (2) DITCH EROSION PROTECTION MAT, TYPE B (150' x 7.5' / 9 = 41.67 SY)
- (4) SEEDING AND EROSION CONTROL WITH TURF REINFORCING MAT, TYPE 2 (150' x 14.5' / 9 = 80.56 SY)

— — — — — PROPOSED PAVEMENT  
 // // // // // 3-1/4" MILL/FILL

FOR QUANTITIES, SEE SHEETS 71-81  
 FOR PROFILE, SEE SHEET 147  
 FOR RAMP J PLAN & PROFILE, SEE SHEET 437  
 FOR RAMP K PLAN & PROFILE, SEE SHEETS 442-444  
 FOR RAMP L PLAN & PROFILE, SEE SHEET 457  
 FOR PAVEMENT DETAILS, SEE SHEETS 613-614  
 FOR INTERCHANGE DETAILS, SEE SHEETS 619-621  
 FOR STORM SEWER PROFILE, SEE SHEETS 645-648  
 FOR UNDERDRAIN TABLES, SEE SHEETS 674-678  
 FOR TRAFFIC CONTROL PLAN, SEE SHEETS 713-733A  
 FOR FENCE TABLES, SEE SHEETS 1039-1041

NOTE: @ WESTBOUND LANES SHOWN FOR HORIZONTAL ALIGNMENT ONLY

U:\175608714.LAW\75923\roadway\sheet\75923\024-2A.dgn 2024 4:51:07 PM SL Parker

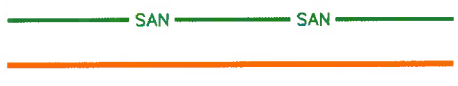
PLAN - S.R. 7  
 STA. 387+00 STA. 399+00

LAW-7-2.17

3

146  
1247

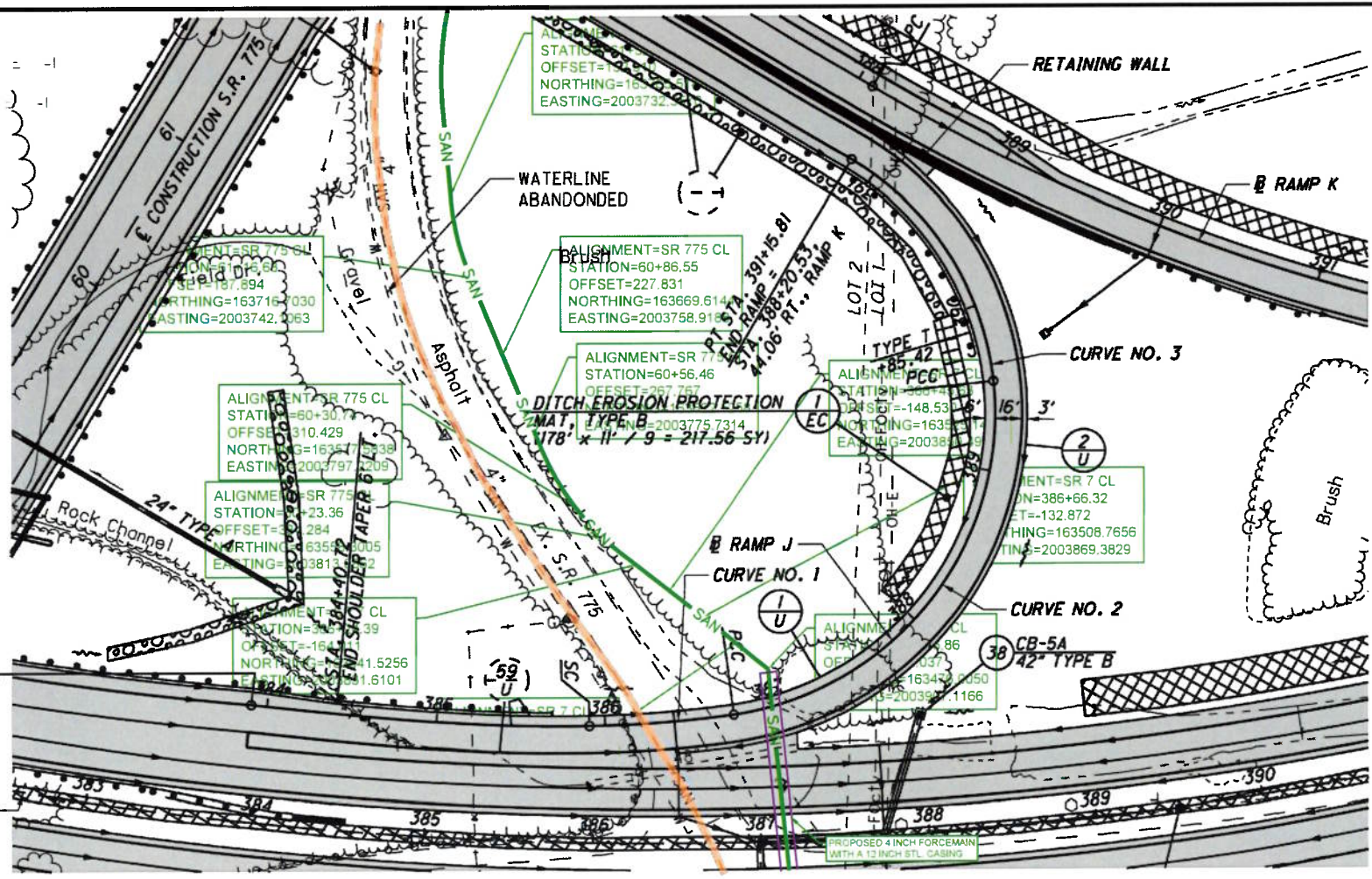




ST STA. 383+90.72  
 BEGIN SHOULDER TAPER, 8' LT.  
 BEGIN RAMP  
 RAMP NOSE =  
 STA. 383+90.72, 69' LT., S.R. 7

E CONSTRUCTION S.R. 7

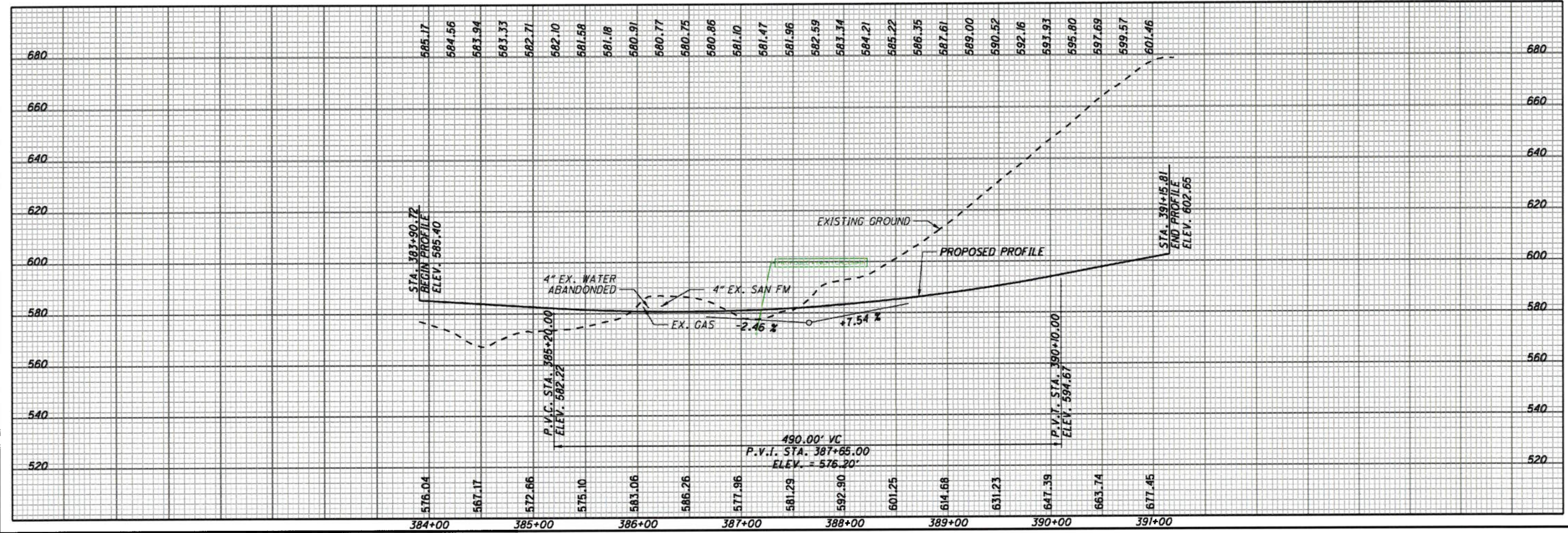
- PROPOSED PAVEMENT



CURVE DATA RAMP J CURVE NO. 1	
P.I. STA. 385+74.87	$\theta_{back} = 7^{\circ} 30' 00''$
$\Delta = 13^{\circ} 53' 07''$ (LT)	$L_{back} = 200.00'$
$Dc = 7^{\circ} 30' 00''$	$T_{back} = 184.15'$
$R = 763.94'$	$LT = 133.45'$
$T = 42.61'$	$ST = 66.78'$
$L = 85.14'$	$e_{max} (N.D.C.) = 8.00\%$
$E = 1.19'$	$e_{max} = 6.20\%$
TS STA. 383+90.72	PCC STA. 386+75.86
SC STA. 385+90.72	

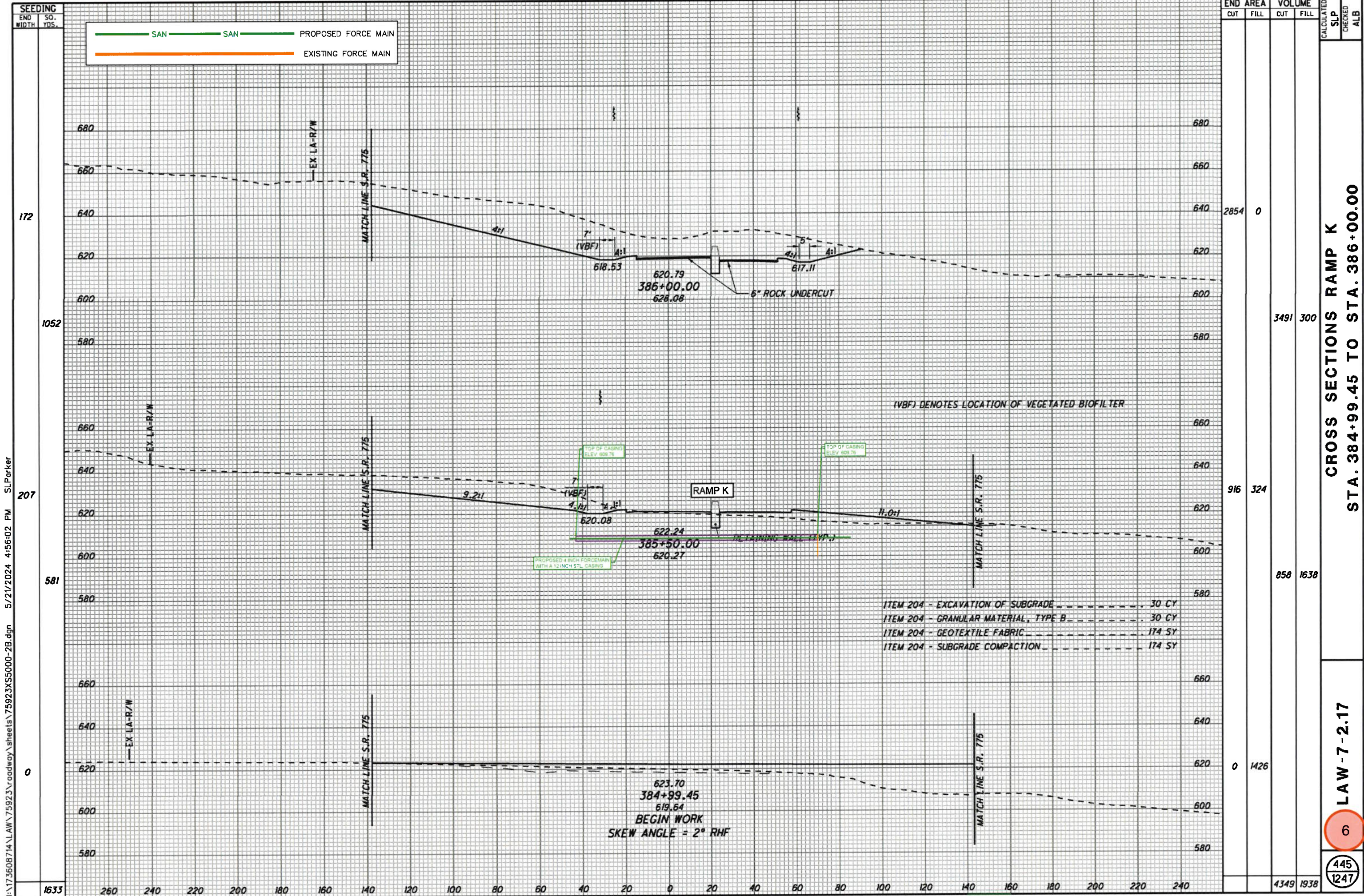
CURVE DATA RAMP J CURVE NO. 2		CURVE DATA RAMP J CURVE NO. 3	
P.I. Sta. 388+50.86	$\Delta = 88^{\circ} 23' 15''$ (LT)	P.I. Sta. 390+41.04	$\Delta = 53^{\circ} 07' 48''$ (LT)
$Dc = 31^{\circ} 49' 52''$	$R = 180.00'$	$Dc = 32^{\circ} 44' 26''$	$R = 175.00'$
$T = 175.00'$	$L = 277.68'$	$T = 87.50'$	$L = 162.28'$
$E = 71.05'$	$e_{max} = 7.66\%$	$E = 20.66'$	$e_{max} = 7.73\%$
PCC Sta. 386+75.86	PCC Sta. 389+53.54	PCC Sta. 389+53.54	PT Sta. 391+15.81

FOR QUANTITIES, SEE SHEETS 71-81  
 FOR S.R. 7 PLAN & PROFILE, SEE SHEETS 144-147  
 FOR RAMP K PLAN AND PROFILE, SEE SHEETS 442-444  
 FOR S.R. 775 PLAN & PROFILE, SEE SHEETS 559-560  
 FOR INTERCHANGE DETAILS, SEE SHEETS 619-621  
 FOR STORM SEWER PROFILE, SEE SHEET 645  
 FOR CULVERT DETAILS, SEE SHEET 664  
 FOR UNDERDRAIN TABLES, SEE SHEETS 674-678  
 FOR RETAINING WALL DETAILS, SEE SHEETS 706-712  
 FOR TRAFFIC CONTROL PLAN, SEE SHEETS 713-733A  
 FOR FENCE TABLES, SEE SHEETS 1039-1041



PLAN AND PROFILE  
 RAMP J  
 LAW-7-2.17  
 5  
 437  
 1247

U:\173608714\LA\75923\roadway\sheet\75923\CP103-2B.dgn 5/21/2024 4:55:52 PM SL Parker



SEEDING	END		SO.	VOLS.
	WIDTH	YDS.		
172				
1052				
207				
581				
0				
1633	260	240	220	200

END	AREA		VOLUME		CALCULATED	CHECKED
	CUT	FILL	CUT	FILL		
172	2854	0				
1052			3491	300		
207	916	324				
581			858	1638		
0	0	1426				
1633	4349	1938				

CROSS SECTIONS RAMP K  
 STA. 384+99.45 TO STA. 386+00.00

LAW-7-2.17  
 6  
 445  
 1247

U:\173608714\LA\75923\roadway\sheet\75923XS5000-2B.dgn 5/21/2024 4:56:02 PM SL Parker

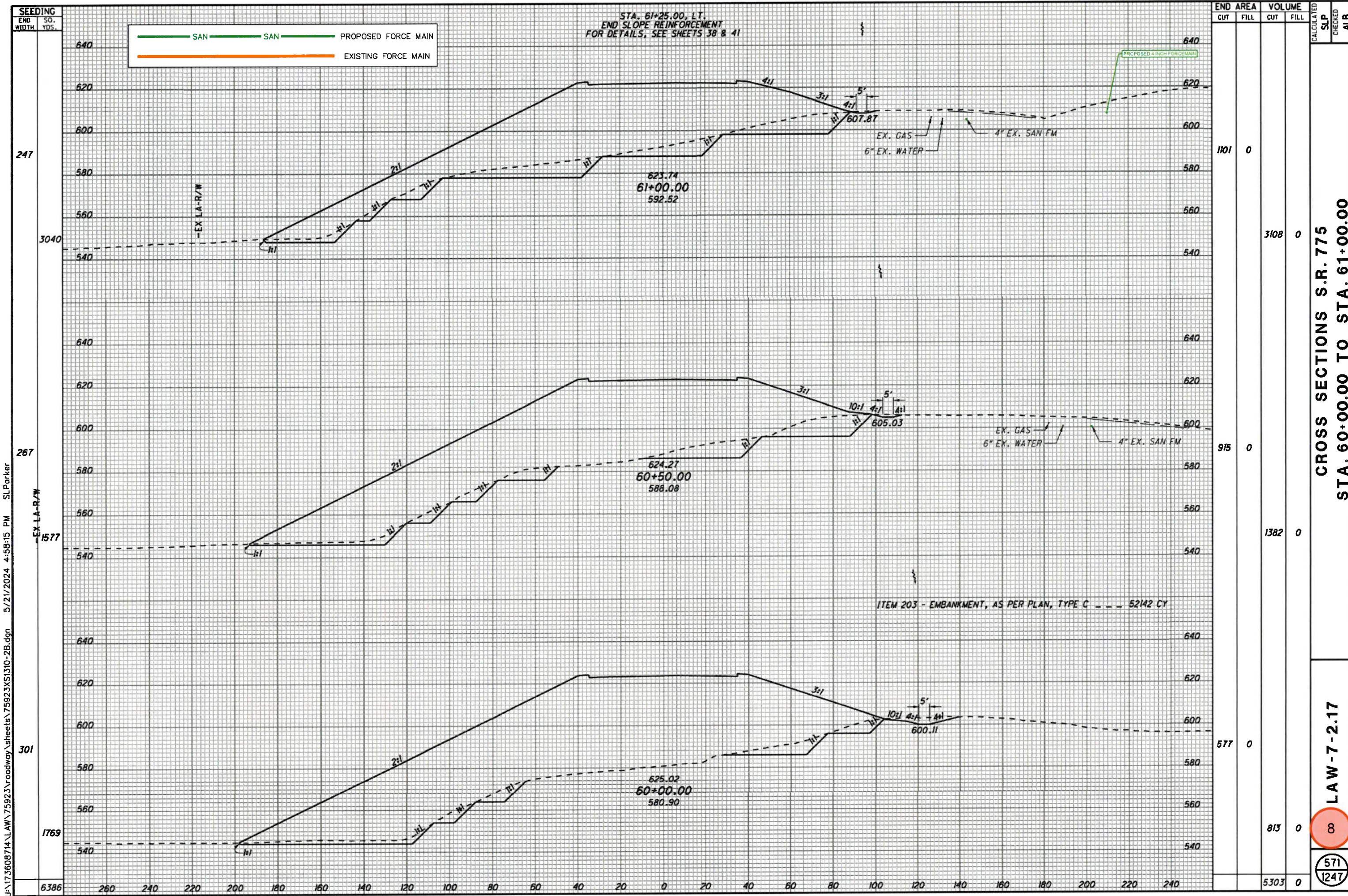
- ITEM 204 - EXCAVATION OF SUBGRADE ..... 30 CY
- ITEM 204 - GRANULAR MATERIAL, TYPE B ..... 30 CY
- ITEM 204 - GEOTEXTILE FABRIC ..... 174 SY
- ITEM 204 - SUBGRADE COMPACTION ..... 174 SY

623.70  
 384+99.45  
 619.64  
 BEGIN WORK  
 SKEW ANGLE = 2° RHF

(VBF) DENOTES LOCATION OF VEGETATED BIOFILTER

SAN PROPOSED FORCE MAIN  
 EXISTING FORCE MAIN





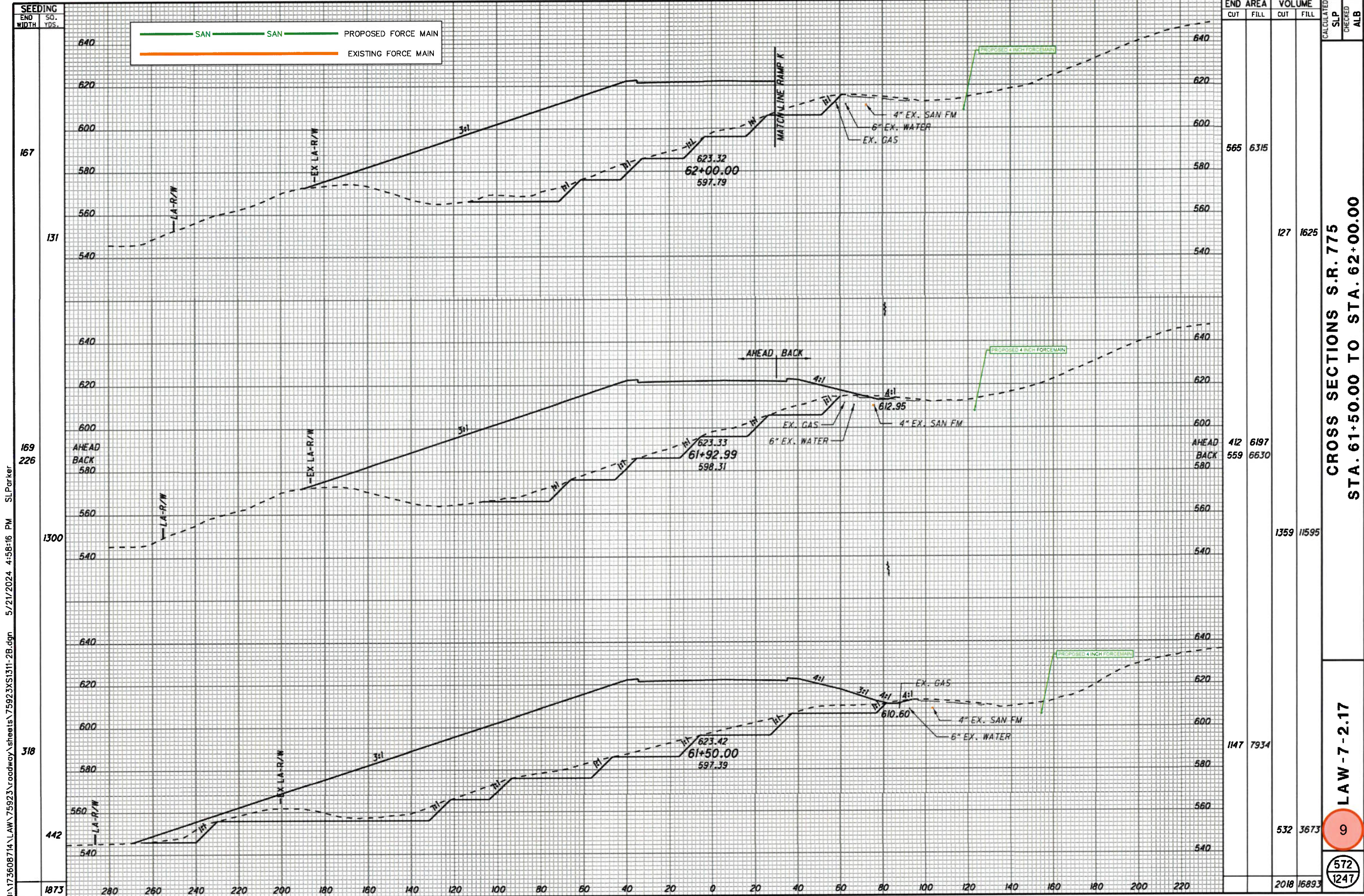
SEEDING	END WIDTH	SO. YDS.	END AREA		VOLUME		CALCULATED SLP	CHECKED	ALB
			CUT	FILL	CUT	FILL			
	247	3040	1101	0	3108	0			
	267	1577	915	0	1382	0			
	301	1769	577	0	813	0			
	6386		5303	0		0			

CROSS SECTIONS S.R. 775  
STA. 60+00.00 TO STA. 61+00.00

LAW-7-2.17  
8  
571  
1247

U:\175608714\LA\75923\roadway\sheet\75923\X51310-2B.dgn 5/21/2024 4:58:15 PM SLParker





END STA.	END AREA		VOLUME		CALCULATED SLP	CHECKED ALB
	CUT	FILL	CUT	FILL		
167	565	6315	127	1625		
169	AHEAD 412	6197	1359	11595		
	BACK 559	6630				
318	1147	7934	532	3673		
1873	2018	16893				

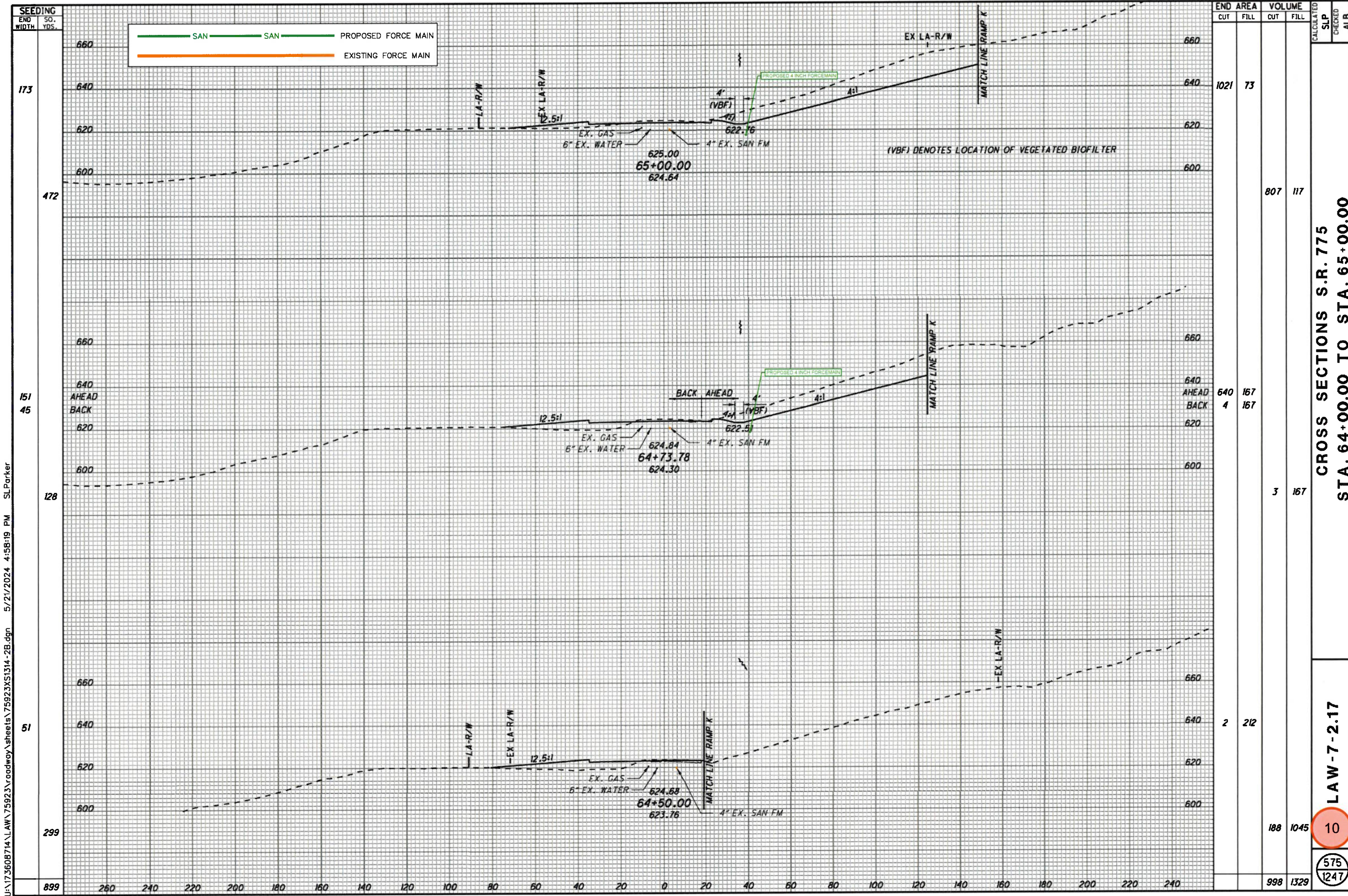
CROSS SECTIONS S.R. 775  
 STA. 61+50.00 TO STA. 62+00.00

LAW-7-2.17

9

572  
1247

U:\173608714\LA\75923\roadway\sheet\75923\K1311-2B.dgn 5/21/2024 4:58:16 PM SLParker



— SAN    — SAN    PROPOSED FORCE MAIN  
—    EXISTING FORCE MAIN

(VBF) DENOTES LOCATION OF VEGETATED BIOFILTER

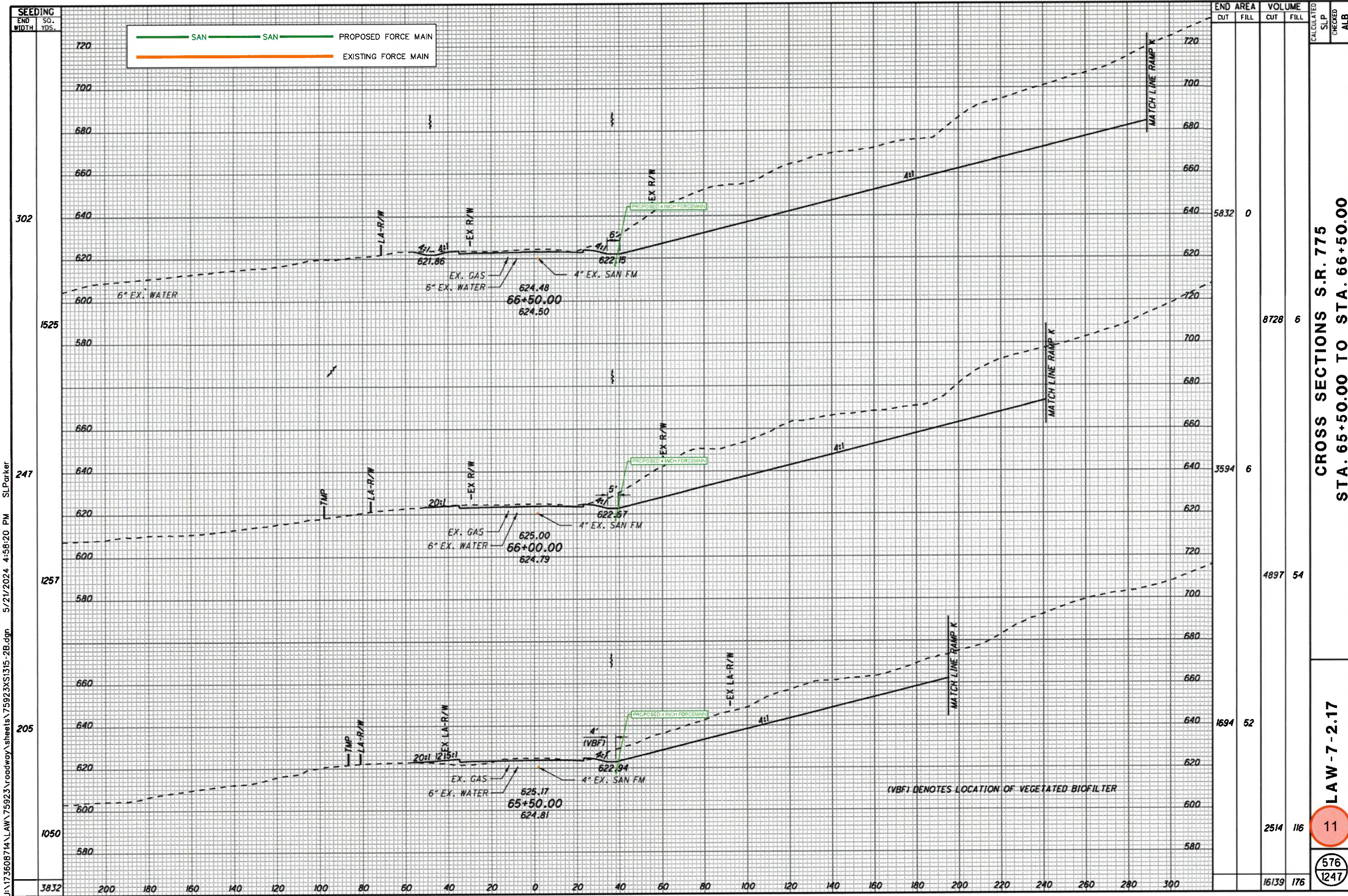
SEEDING END WIDTH	SO. YDS.	END AREA		VOLUME		CALCULATED SLP	CHECKED ALB
		CUT	FILL	CUT	FILL		
173		1021	73				
472				807	117		
151	45	640	167	4	167		
128				3	167		
51		2	212				
299				188	1045		
899				998	1329		

CROSS SECTIONS S.R. 775  
 STA. 64+00.00 TO STA. 65+00.00

LAW-7-2.17

10  
 575  
 1247

U:\173608714\LA\75923\roadway\sheet\75923\X1314-2B.dgn 5/21/2024 4:58:19 PM SLParker



SEEDING	END WIDTH	SO. YDS.
	3832	
	200	
	180	
	160	
	140	
	120	
	100	
	80	
	60	
	40	
	20	
	0	
	20	
	40	
	60	
	80	
	100	
	120	
	140	
	160	
	180	
	200	

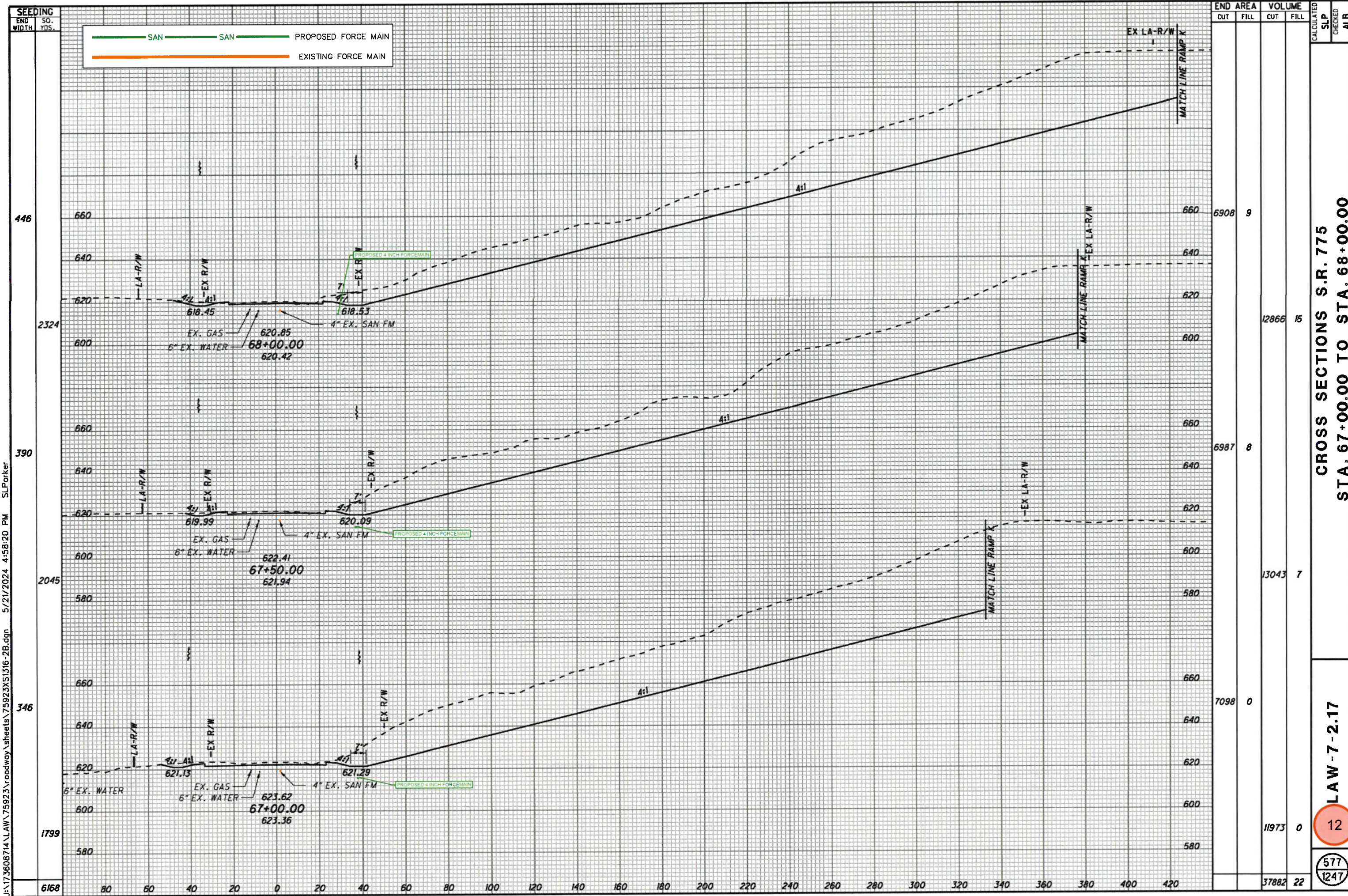
END AREA	VOLUME	CALCULATED SLP	CHECKED ALB
5832	0		
8728	6		
3594	6		
4897	54		
1694	52		
2514	116		
16139	176		

CROSS SECTIONS S.R. 775  
 STA. 65+50.00 TO STA. 66+50.00

LAW-7-2.17  
 11  
 576  
 1247

U:\173608714\LA\759223\roadway\sheet\75923\X\1315-2B.dgn 5/21/2024 4:56:20 PM SLParker

(VBF) DENOTES LOCATION OF VEGETATED BIOFILTER



SEEDING  
 END WIDTH SO. YDS.  
 446  
 2324  
 390  
 2045  
 346  
 1799  
 6168

— SAN — SAN — PROPOSED FORCE MAIN  
 — EXISTING FORCE MAIN

END STA.	END AREA		VOLUME		CALCULATED SLP	CHECKED ALB
	CUT	FILL	CUT	FILL		
668						
660	6908	9				
620			12866	15		
600						
580	6987	8				
560			13043	7		
540						
520	7098	0				
500			11973	0		
480						
460			37882	22		

CROSS SECTIONS S.R. 775  
 STA. 67+00.00 TO STA. 68+00.00

LAW-7-2.17  
 12  
 577  
 1247

U:\173608714\LA\75923\roadway\sheet\75923\X\1316-2B.dgn 5/21/2024 4:58:20 PM SLParker