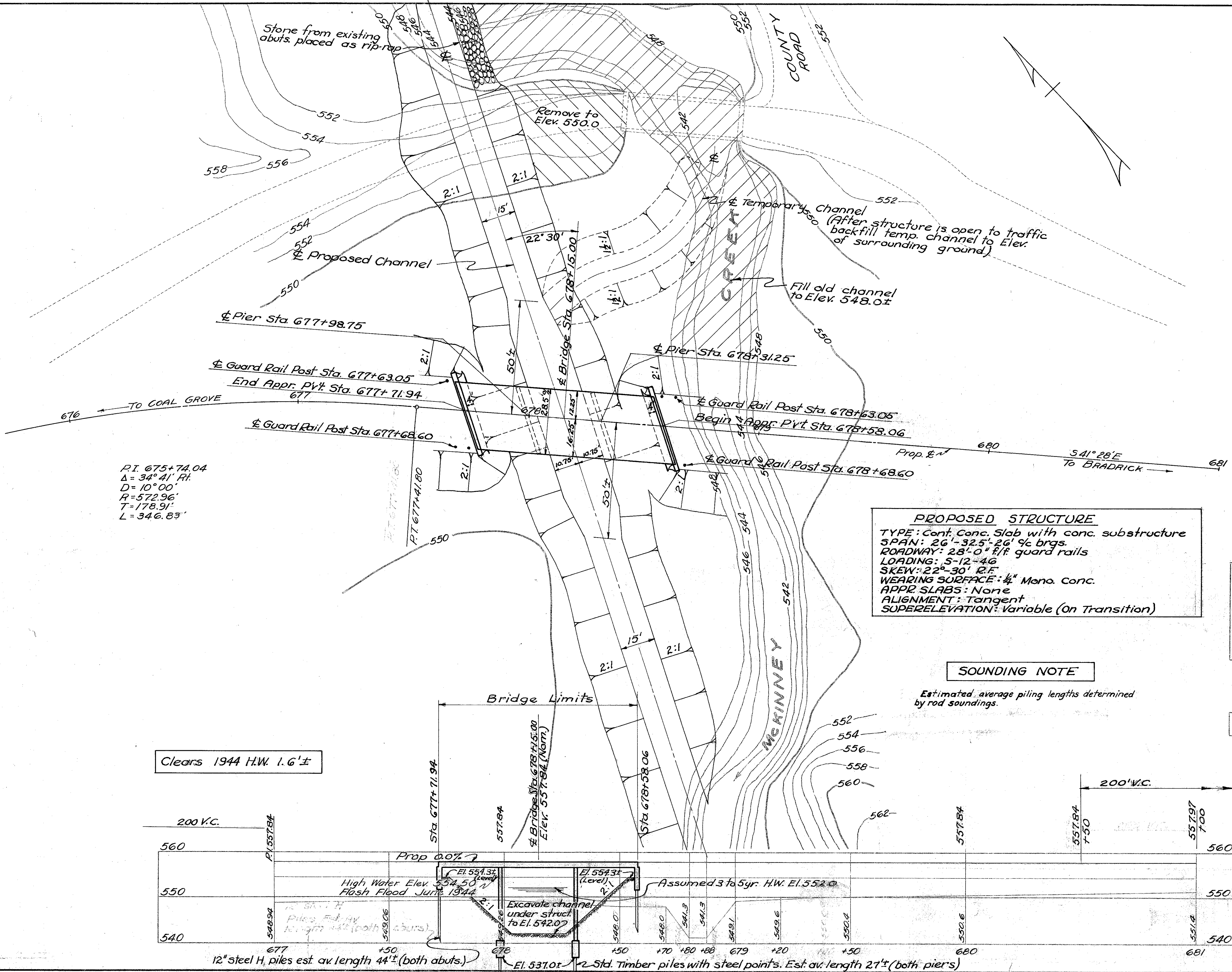


LAWRENCE COUNTY
 S. H. 681 SEC. A (PT.) B & C (PT.)
 0.4 Mi. ± S.E. OF GETAWAY
 LAW-243-5.03



$P.I. 675+74.04$
 $\Delta = 34^\circ 41' R.$
 $D = 10^\circ 00'$
 $R = 572.96'$
 $T = 178.91'$
 $L = 346.83'$

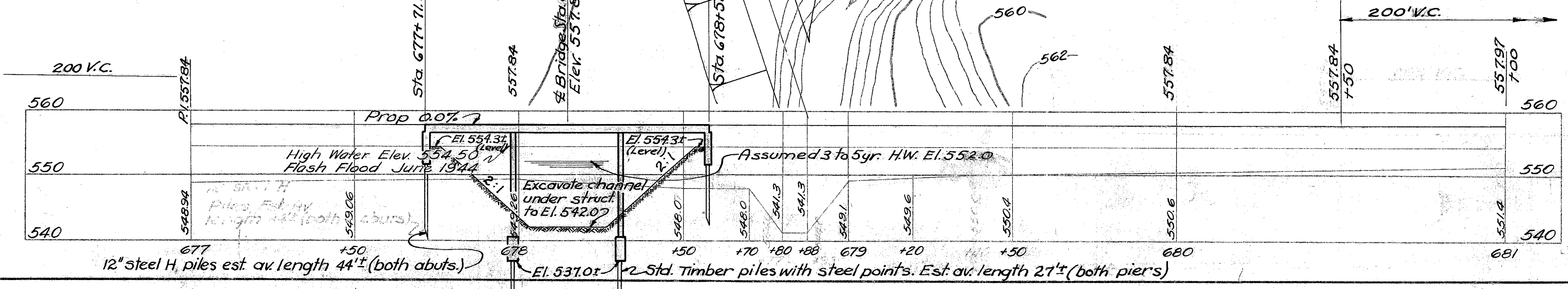
PROPOSED STRUCTURE
 TYPE: Cont. Conc. Slab with conc. substructure
 SPAN: 26'-32.5'-26' 9/16 brgs.
 ROADWAY: 28'-0" f/f; guard rails
 LOADING: S-12-46
 SKEW: 22°-30' R.F.
 WEARING SURFACE: 1/4" Mono. Conc.
 APPR. SLABS: None
 ALIGNMENT: Tangent
 SUPERELEVATION: Variable (On Transition)

EXISTING BRIDGE DATA
 TYPE: Steel Truss on Stone Abutments
 SPAN: 50'-0"
 ROADWAY: 12'-3"
 SKEW: None
 CONDITION: Superstructure - Good
 Substructure - Poor
 To be Removed

SOUNDING NOTE
 Estimated average piling lengths determined by rod soundings.

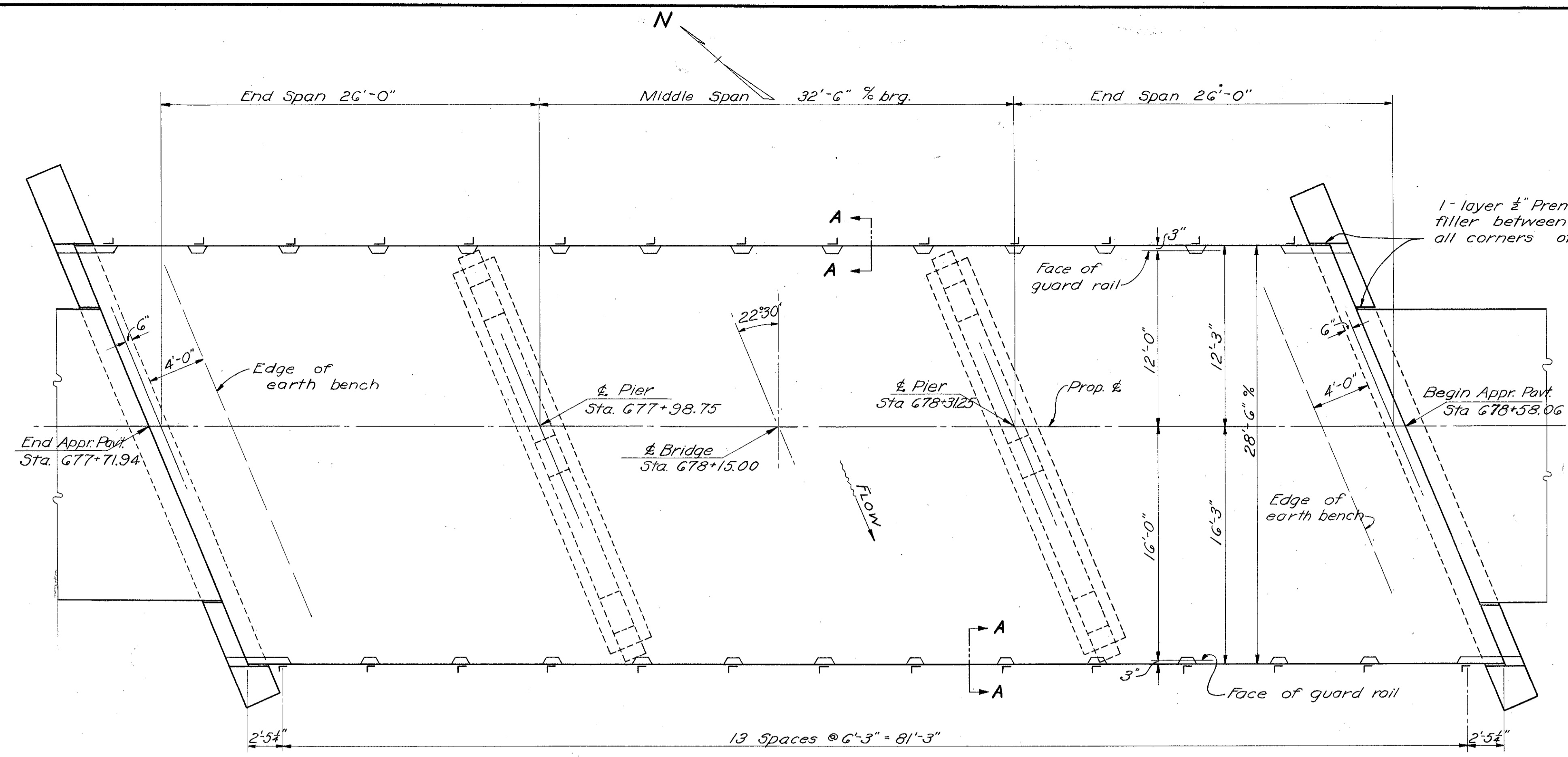
DRAINAGE AREA 5.0 SQ. MI.

Clears 1944 H.W. 1.6' ±



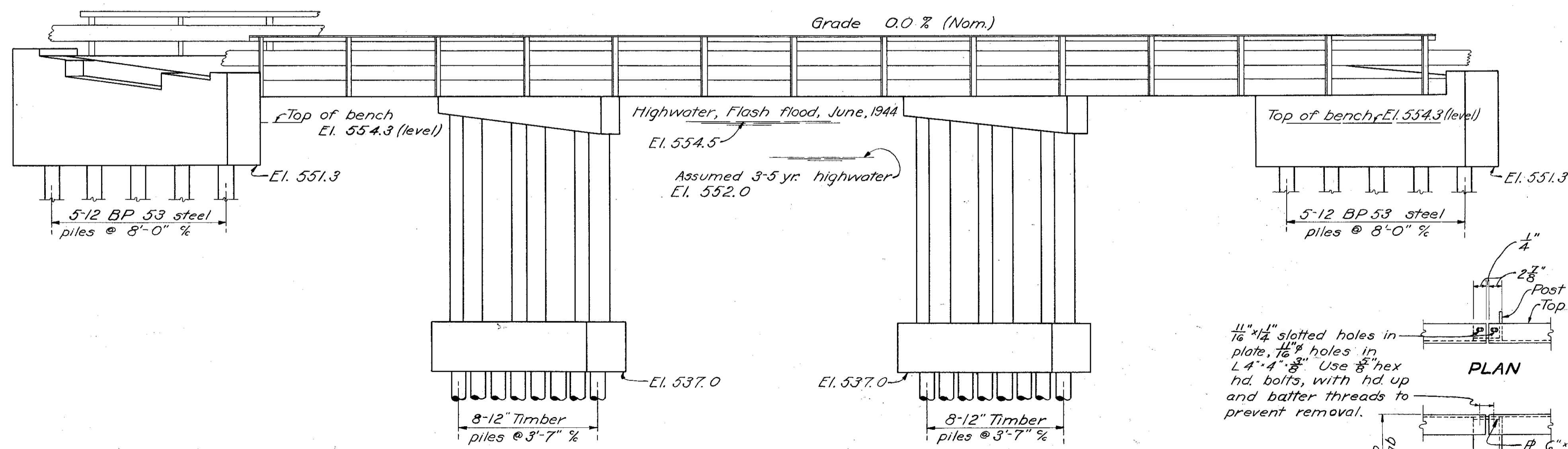
STATE OF OHIO DEPARTMENT OF HIGHWAYS BUREAU OF BRIDGES					
SITE PLAN					
BRIDGE NO. LA-243-131					
OVER MCKINNEY CREEK					
LAWRENCE CO. SEC. C			S.H. 681		
STA. 678+15					
Scale = Horiz. 1" = 20'			Vert. 1" = 10'		
Present	Topography	Designed	Proposed	Work	
Surveyed	Drawn	Designed	Drawn	Checked	Reviewed
R.A.	W.K.	C.F.B.	C.F.B.	G.W.G.	J.M.

LAWRENCE COUNTY
S. H. 681 SEC. A (Pt) B & C (Pt)
LAW-243-5,03

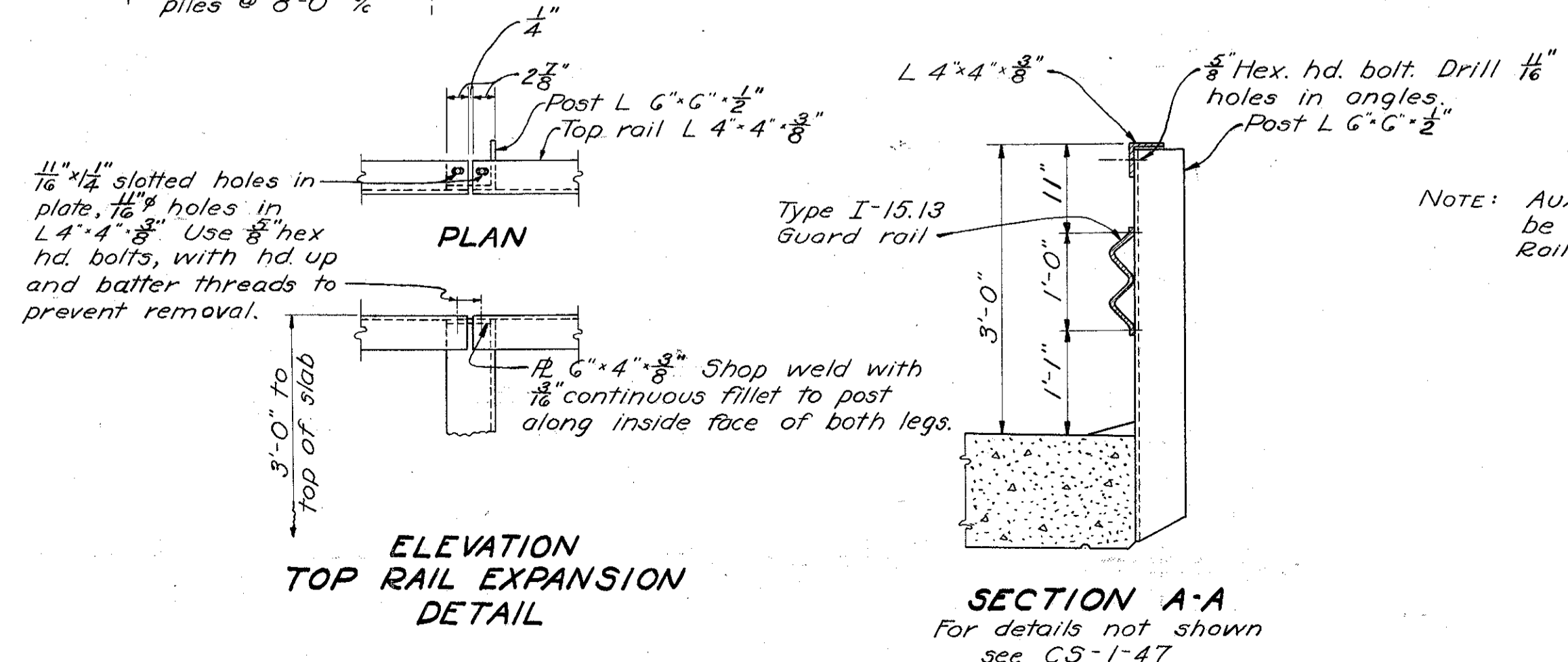


GENERAL PLAN

ESTIMATED QUANTITIES								
ITEM	TOTAL	UNIT	DESCRIPTION	ABUTS.	PIERS	SUP' STR	GEN'L	As BUILT
E-2	Lump	Sum	Cofferdams, cribs and sheeting				Lump	Lump
E-2	127	Cu. yd.	Unclassified excavation	41	86			127
E-3	3678	Cu. yd.	Channelled excavation				3678 #7, +16	3794
S-1	102	Cu. yd.	Class "C" concrete, superstructure			102		102
S-1	42	Cu. yd.	Class "C" concrete, abutments	42				42
S-1	20	Cu. yd.	Class "C" concrete, pier caps and columns		20			20
S-1	21	Cu. yd.	Class "C" concrete, pier footing		21			21
S-4	41,139	Lb.	Reinforcing steel	4463	12542	23993	141	41,139
S-9	13	Sq. ft.	1/2" premolded expansion joint filler			13		13
S-14	172.24	Lin. ft.	Railing (steel beam Type I-15.13 Modified)			172.24		172.24
S-16	Lump	Sum	First test pile (timber or steel)				Lump	Lump
S-18	432	Lin. ft.	Timber piling, untreated		432		#7, -50	381.9
S-18	440	Lin. ft.	Steel piling 12" BP @ 53 lb.	440				440
S-18	16	Each	Steel pile points		16			16
S-24	Lump	Sum	Removal of existing structure				Lump	Lump
I-10	70	Sq. yd.	Rip-Rap				70 #7, -2.5	45



GENERAL ELEVATION



ELEVATION TOP RAIL EXPANSION DETAIL

SECTION A-A
For details not shown see CS-1-47

REFERENCE shall be made to Standard Drawing number CS-1-47, dated 9-18-47.

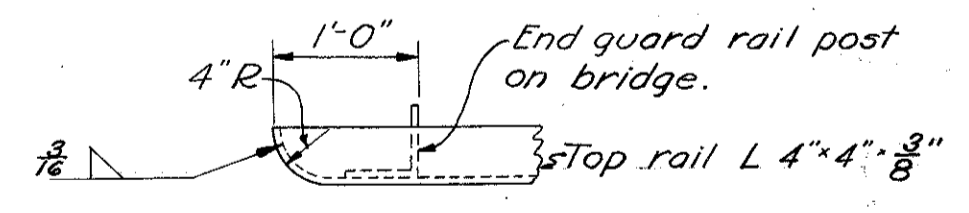
REMOVAL OF EXISTING BRIDGE. Existing superstructure shall be carefully removed, match marked and piled on the R/W at the disposal of State forces, when no longer needed to maintain traffic. Existing substructure shall be removed to Elev 548' and used as rip-rap as shown on site plan.

EXCAVATION quantity includes the removal of fill material between top of earth bench and bottom of abutment crossbeam.

GENERAL NOTES

ALL PILING shall be driven to a minimum bearing capacity of 20 tons.

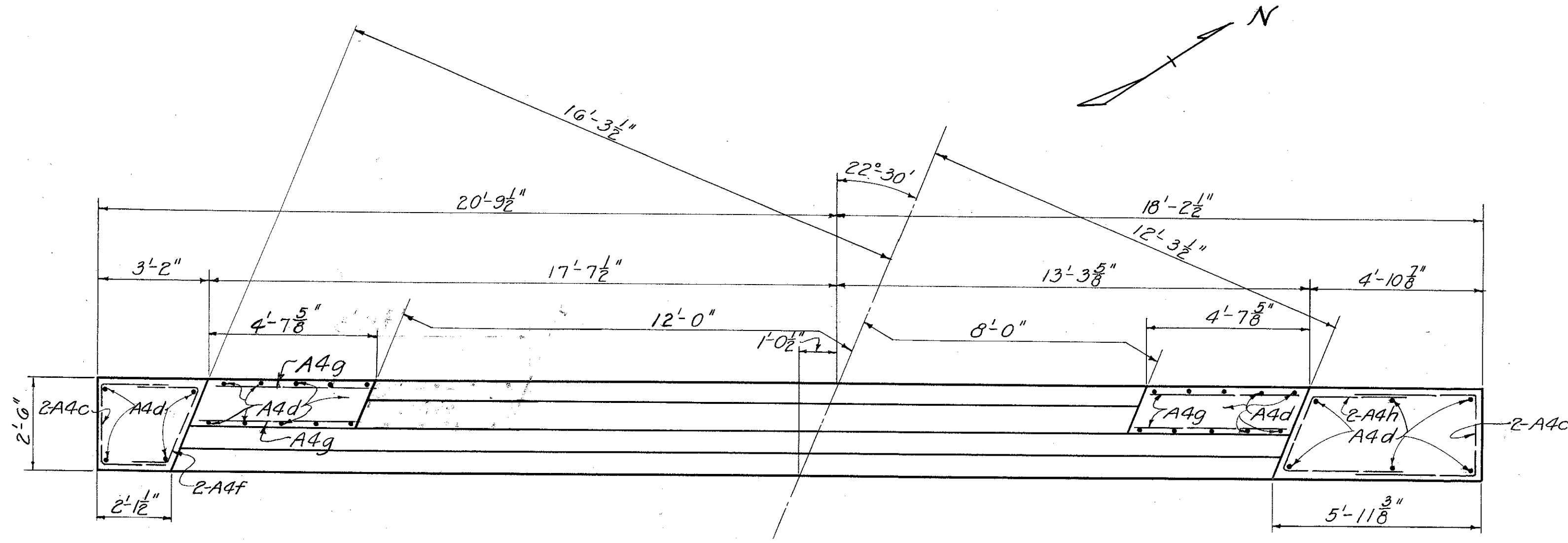
REINFORCING STEEL. Unless otherwise shown, all bars shall be fabricated with dimensions in accordance with the proposed Manual of Standard Practice, American Concrete Institute, 1946, except that a tolerance will be permitted in the diameter of bends equal to the diameter of the bar. No weight allowance will be made for tolerances.



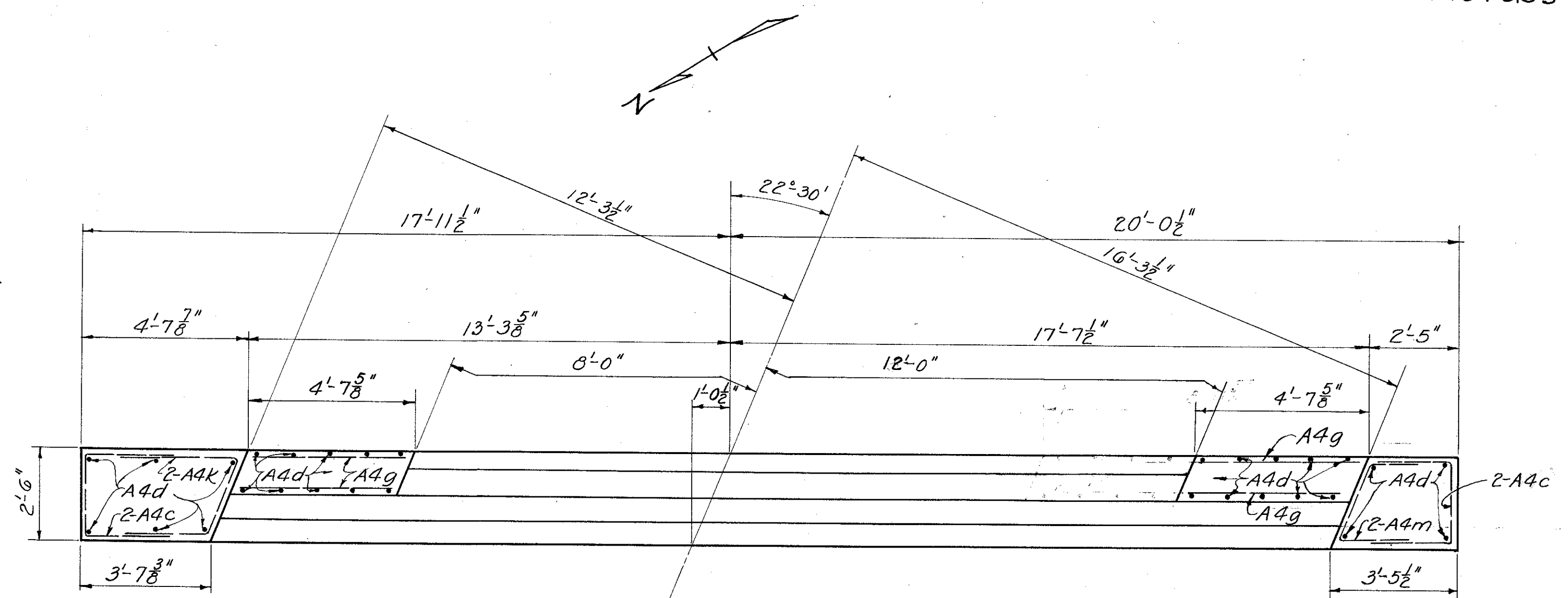
PLAN VIEW OF END OF TOP RAIL ANGLE ON BRIDGE

Note: Auxiliary rail angle (4x4x3/8) shall be included with Item S-14, Railing, for payment.

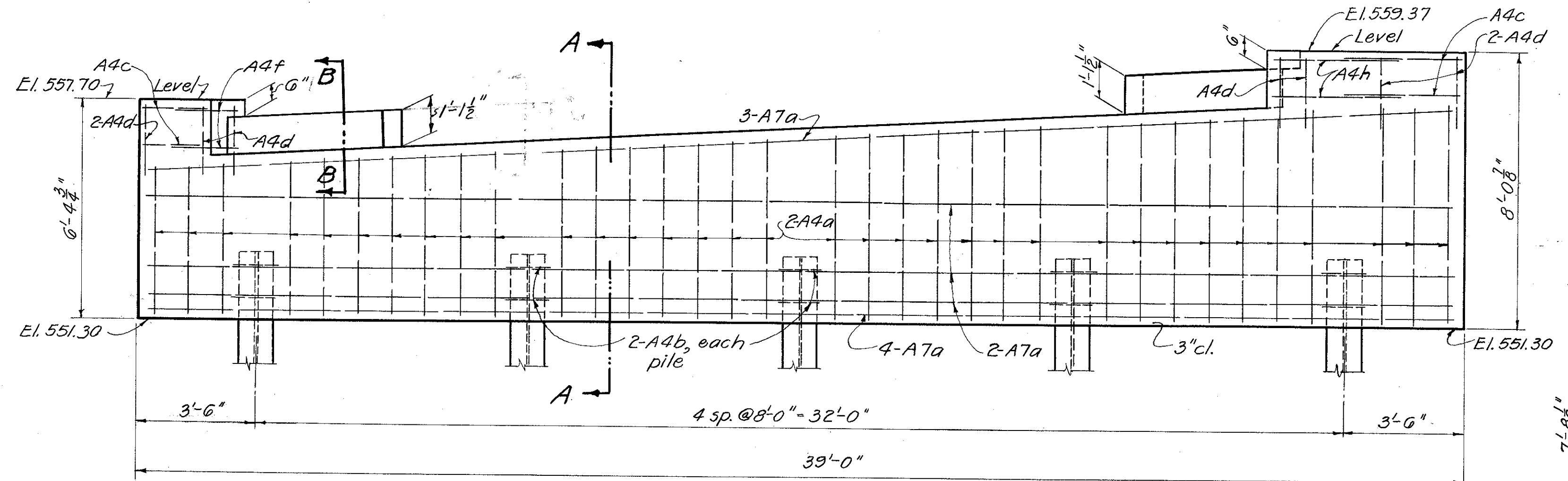
STATE OF OHIO DEPARTMENT OF HIGHWAYS BUREAU OF BRIDGES					
GENERAL PLAN & ELEVATION NOTES & EST. QUANTITIES					
BRIDGE No. LA-243-131 OVER M ^c KINNEY Cr.					
LAWRENCE Co.			S.H. 681		
SEC. "C"			STA. 678+15.00		
DESIGNED	DRAWN	TRACED	CHECKED	REVIEWED	DATE
WAT	WAT	LS	LS	WPK	11/3/48



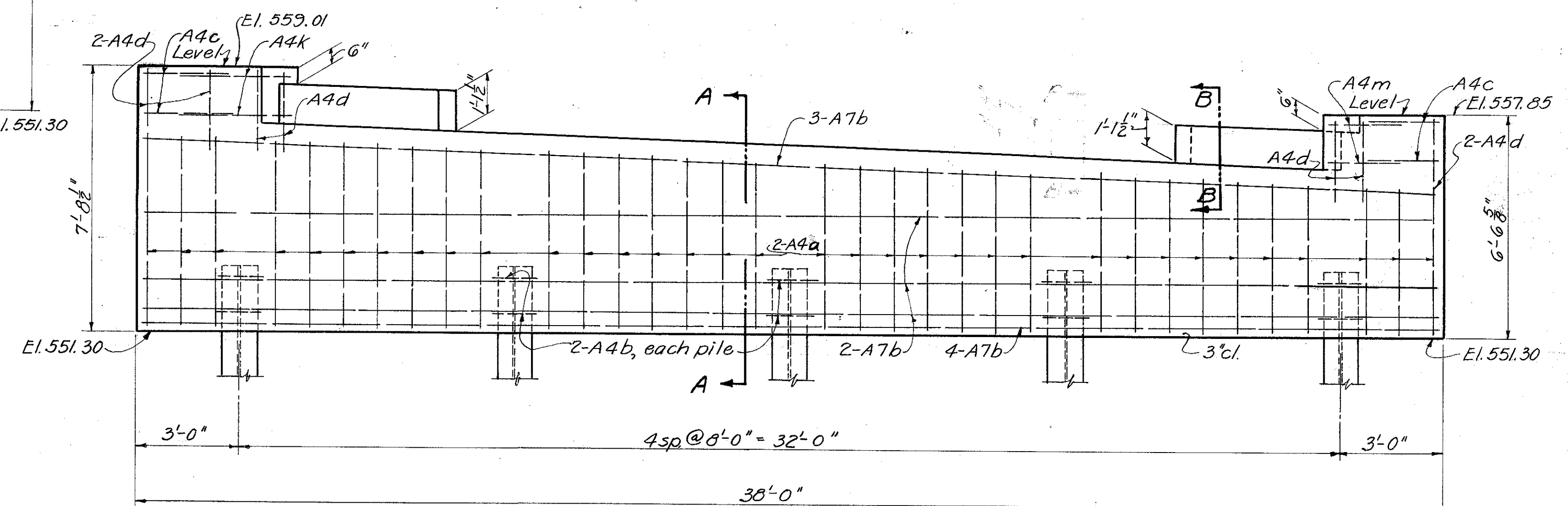
PLAN-WEST ABUTMENT
PILING NOT SHOWN



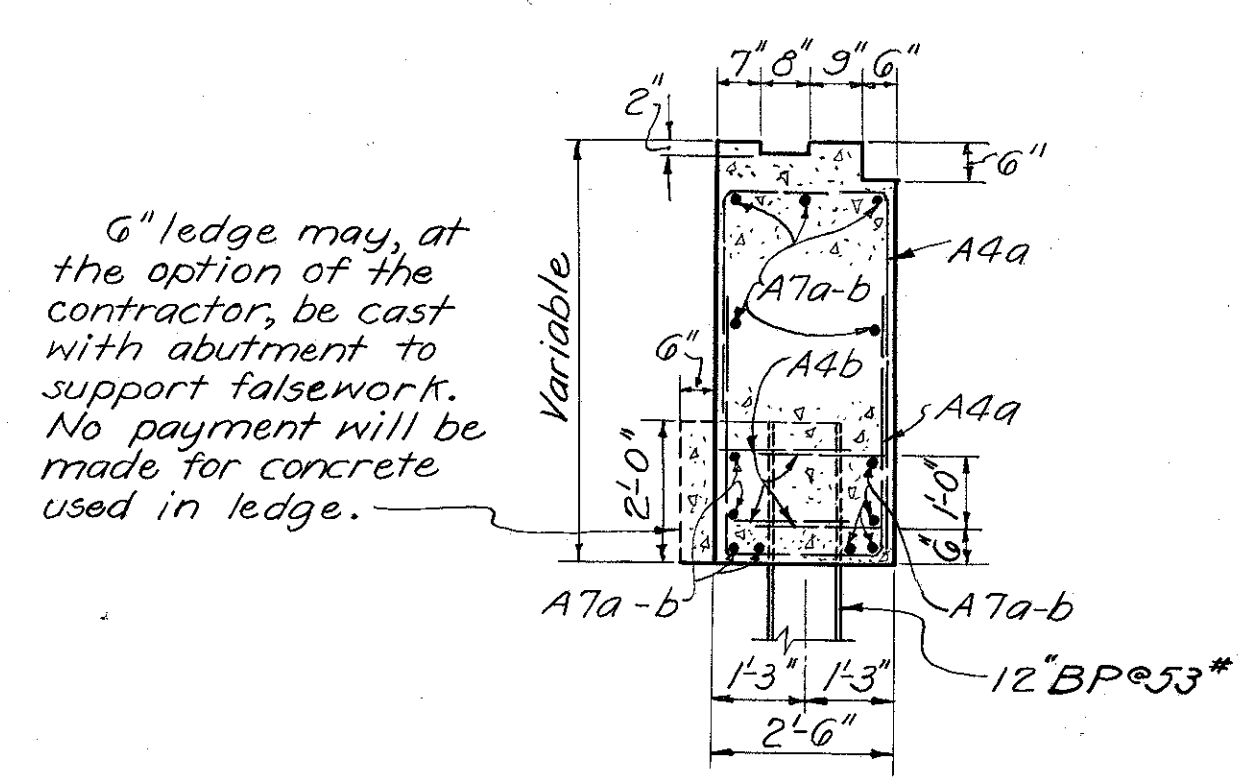
PLAN-EAST ABUTMENT
PILING NOT SHOWN



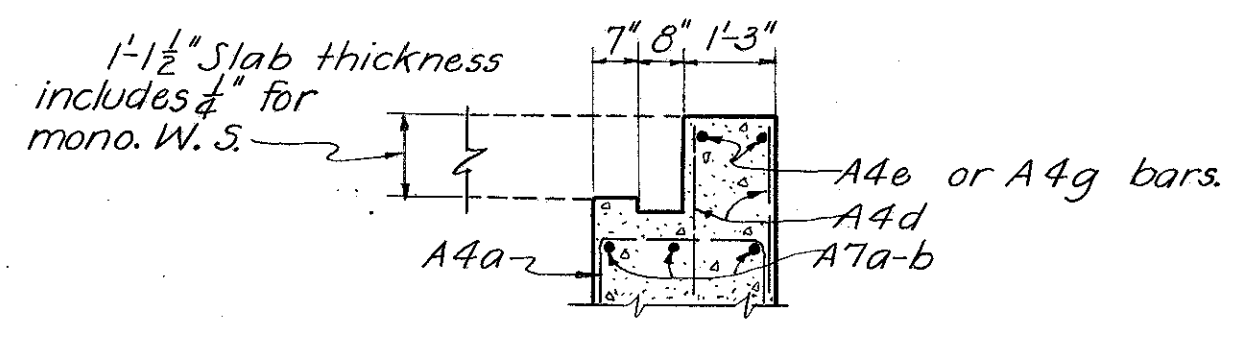
ELEVATION-WEST ABUTMENT
BRIDGE SEAT KEYS NOT SHOWN



ELEVATION-EAST ABUTMENT
BRIDGE SEAT KEYS NOT SHOWN



SECTION A-A

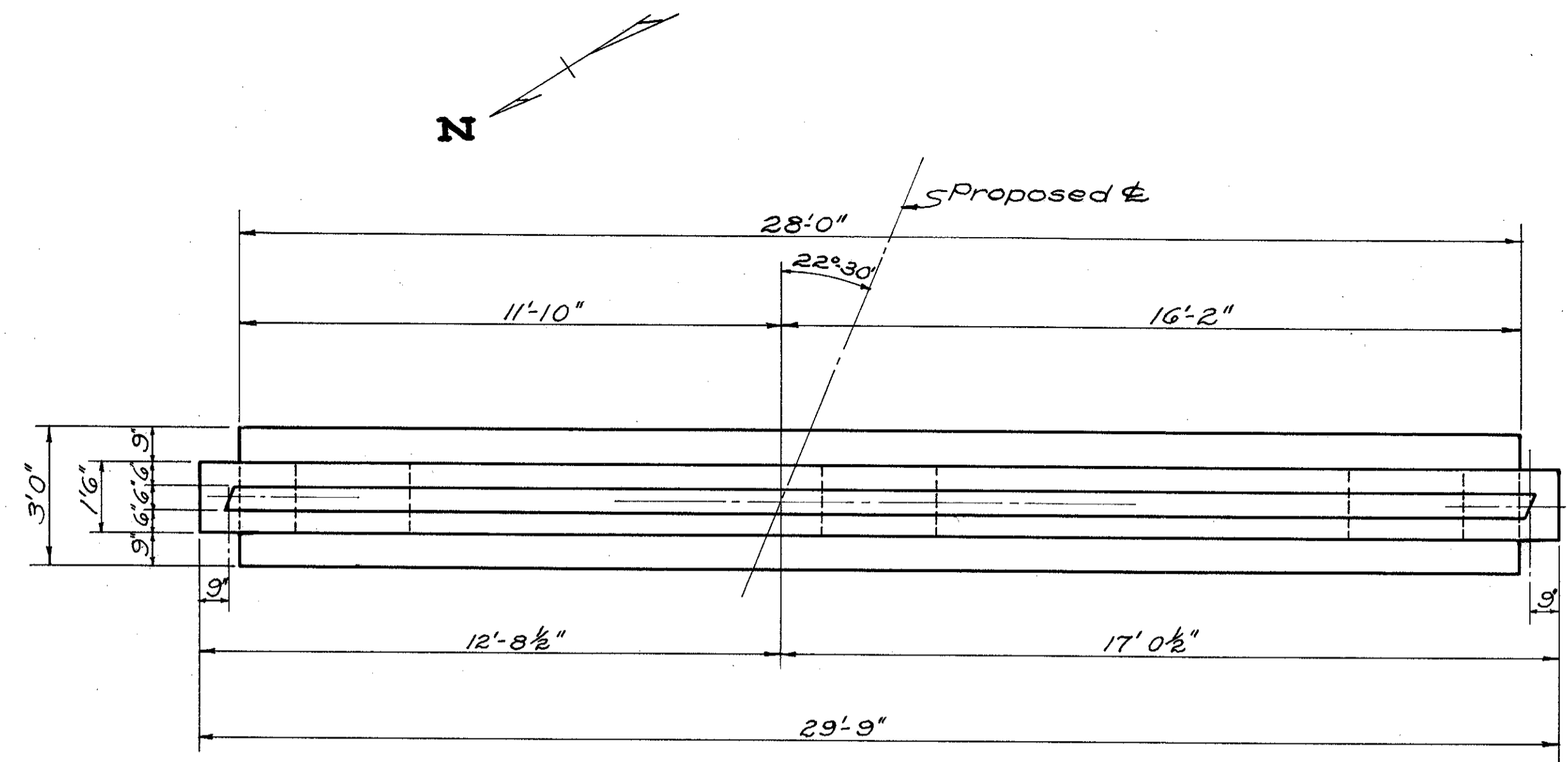


SECTION B-B

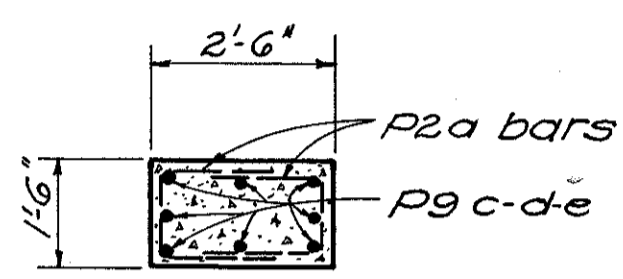
6\" ledge may, at the option of the contractor, be cast with abutment to support falsework. No payment will be made for concrete used in ledge.

NOTE:
All earth fill around abutments shall be made full height of earth bench. Excavation shall then be made for abutment cap, after which piling shall be driven. If bottom forms for abutment cap are used, they shall be left in place.
All reinforcing shall be 2\" clear unless otherwise shown.

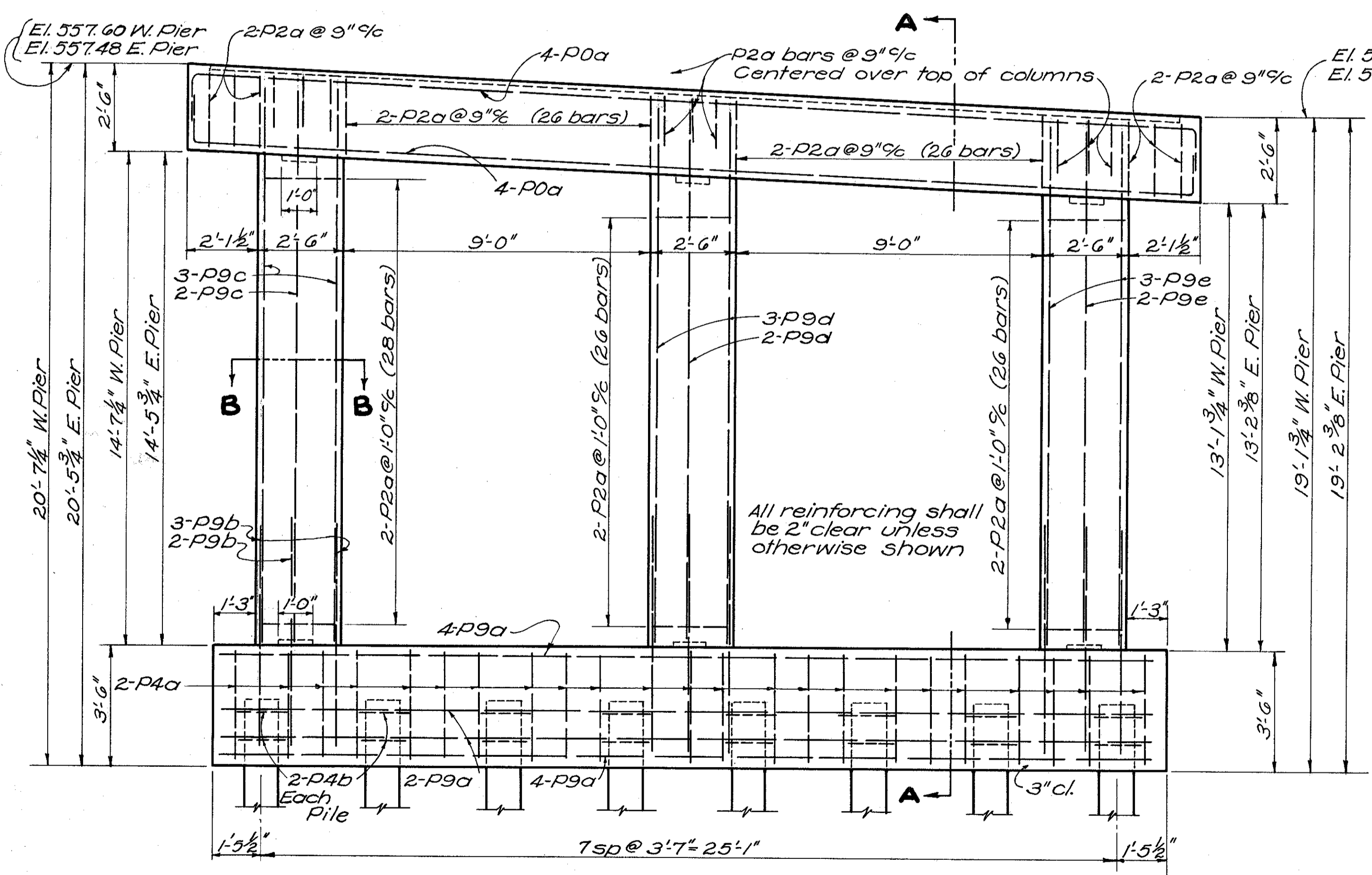
STATE OF OHIO DEPARTMENT OF HIGHWAYS BUREAU OF BRIDGES						
ABUTMENT DETAILS						
BRIDGE No. LA-243-131 OVER MCKINNEY CREEK						
LAWRENCE CO. SEC. "C"				S. H. 681 STA. 678+15.00		
DESIGNED	DRAWN	TRACED	CHECKED	REVIEWED	DATE	REVISED
WAR	WAR	KEY	WEL	A. F. W.	1/15/48	



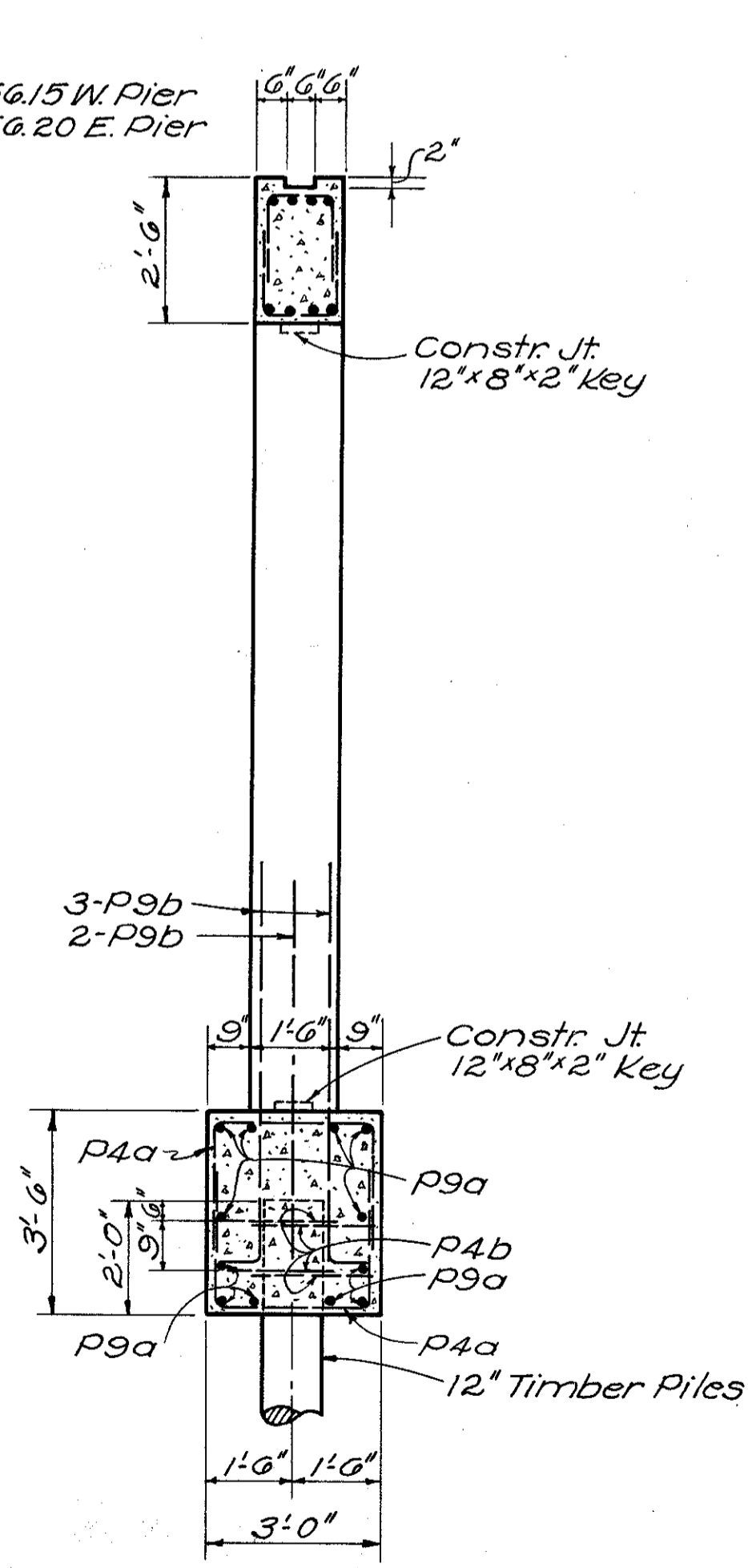
PLAN-PIER
Piling not shown



SECTION B-B

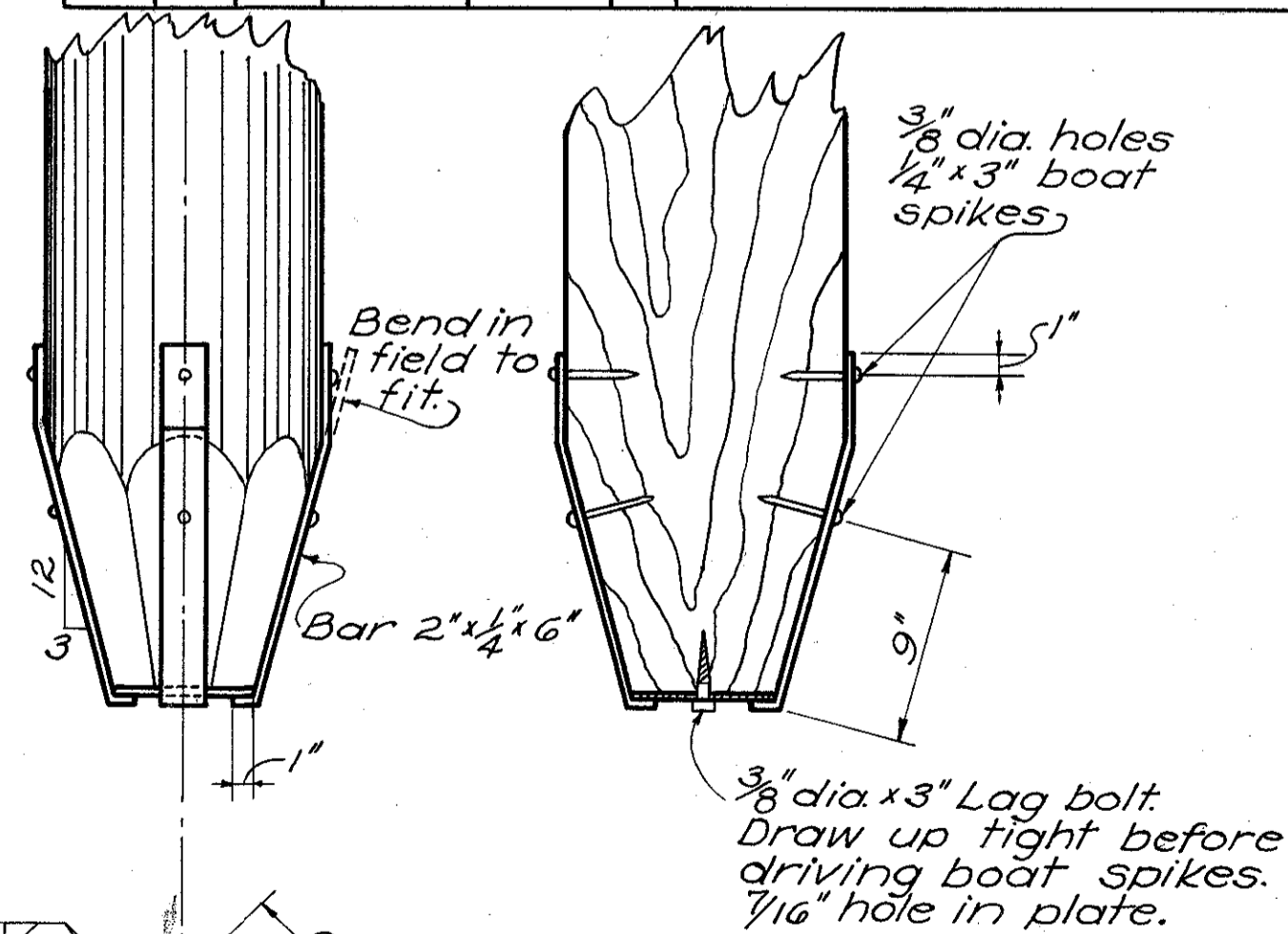
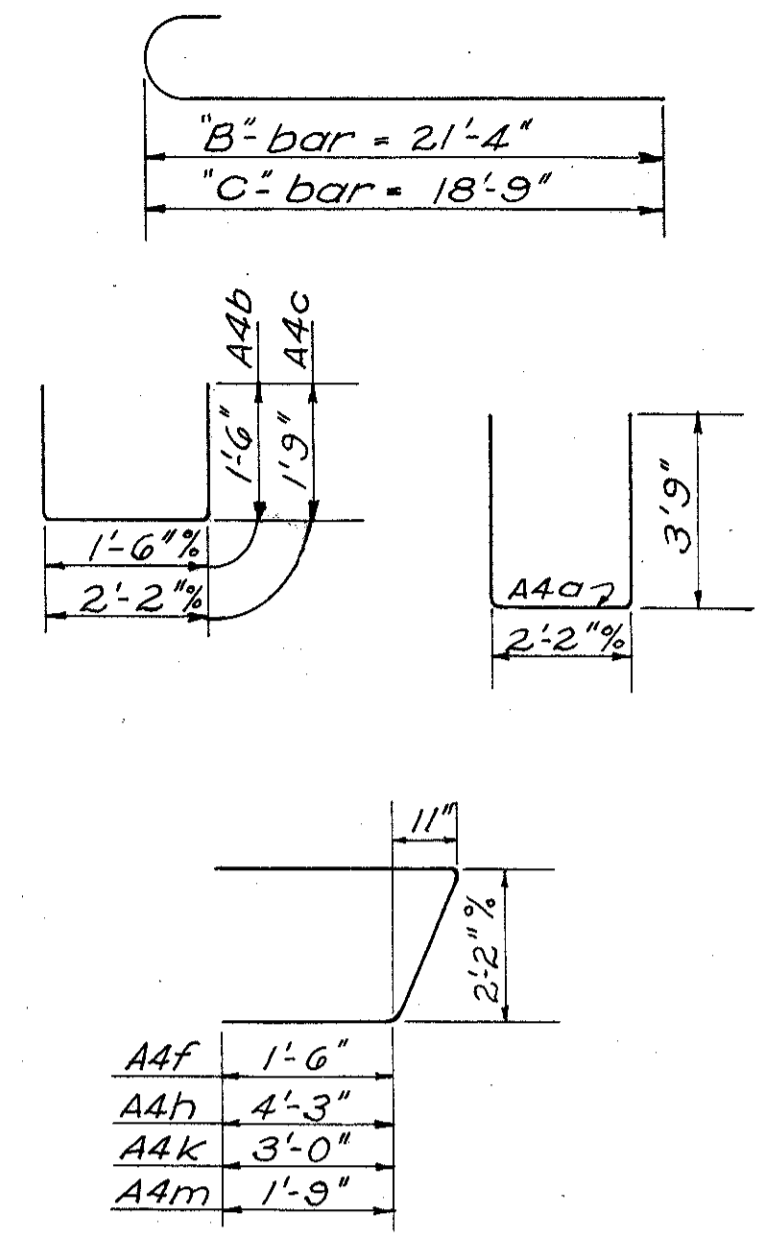


ELEVATION-PIER



SECTION A-A

REINFORCING STEEL LIST					
Mark	Size	No	Length	Weight	Shd
Superstructure					
A	1"	60	30'-9"	6,273	S
B	1"	20	22'-5"	1,524	B
C	1"	20	19'-10"	1,349	B
D	1"	10	20'-3"	689	S
E	1"	10	16'-6"	561	S
F	1"	56	21'-3"	4,046	S
G	1"	28	12'-3"	1,166	S
H	1"	28	9'-3"	881	S
J	3/4"	28	19'-3"	810	S
K	3/4"	14	19'-3"	405	S
L	3/4"	82	30'-4"	3,737	S
M	3/4"	56	30'-4"	2,552	S
Abutments					
A7a	1"	13	38'-6"	1,336	S
A7b	1"	13	37'-6"	1,302	S
A4a	3/8"	136	9'-4"	1,325	B
A4b	3/8"	40	4'-2"	174	B
A4c	3/8"	8	5'-4"	45	B
A4d	3/8"	60	2'-0"	125	S
A4f	3/8"	2	5'-11"	12	B
A4g	3/8"	8	4'-3"	36	S
A4h	3/8"	2	11'-5"	24	B
A4k	3/8"	2	8'-11"	19	B
A4m	3/8"	2	6'-5"	13	B
Piers					
P0a	1 1/4"	16	32'-0"	2,720	B
P9a	1 1/8"	24	27'-6"	2,840	S
P9b	1 1/8"	48	8'-0"	1,652	B
P9c	1 1/8"	16	16'-3"	1,119	S
P9d	1 1/8"	16	15'-8"	1,079	S
P4a	3/8"	92	7'-7"	728	B
P4b	3/8"	64	5'-9"	384	B
P2a	1/2"	306	5'-1"	1,039	B
P9e	1 1/8"	16	15'-0"	1,033	S
Replacement Steel					
RE0	1 1/4"	1	8'-2"	43	S
RE9	1 1/8"	1	7'-9"	33	S
RE8	1"	1	7'-4"	25	S
RE7	1"	1	7'-4"	20	S
RE5	3/4"	1	6'-6"	10	S
RE4	3/8"	1	6'-1"	6	S
RE2	1/2"	1	5'-8"	4	S



STEEL PILE POINT FOR TIMBER PILES

STATE OF OHIO
 DEPARTMENT OF HIGHWAYS
 BUREAU OF BRIDGES

PIER DETAILS & STEEL LIST
 BRIDGE NO. LA-243-131
 OVER M^SKINNEY CREEK
 LAWRENCE CO. S.H. 681
 SEC. C STA. 678+15.00

DESIGNED	DRAWN	TRACED	CHECKED	REVIEWED	DATE	REVISED
WAR	WAR	TWP	BS	af	1/13/48	