

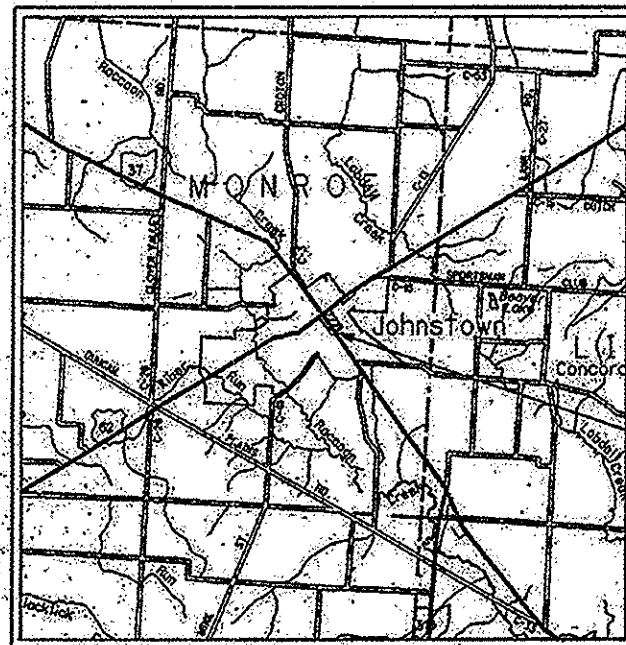
STATE OF OHIO
 DEPARTMENT OF TRANSPORTATION
LIC-S.R. 37-4.64
(STREETSCAPE)
 VILLAGE OF JOHNSTOWN
 LICKING COUNTY

PROJECT DESCRIPTION

REPLACEMENT OF EXISTING WALK ALONG BOTH SIDES OF SOUTH MAIN STREET FROM COSHOCTON STREET TO PRATT STREET. WORK WILL ALSO INCLUDE REPLACEMENT OF EXISTING TRASH RECEPTACLES, BENCHES, PLANTERS AND STREET LIGHTING THROUGHOUT THE PROJECT LIMITS.

PROJECT EARTH DISTURBED AREA = N/A (MAINTENANCE PROJECT)
 ESTIMATED CONTRACTOR EARTH DISTURBED AREA = N/A (MAINTENANCE PROJECT)
 NOTICE OF INTENT EARTH DISTURBED AREA = N/A (MAINTENANCE PROJECT)

FEDERAL PROJECT NO. **E110161**
 PID NO. **90053**
 CONSTRUCTION PROJECT NO.
 RAILROAD INVOLVEMENT **NONE**
LIC-S.R. 37-4.64 (STREETSCAPE)



LOCATION MAP

LATITUDE: N 40° 09' 10" LONGITUDE: W 82° 41' 05"



PORTION TO BE IMPROVED	
INTERSTATE & DIVIDED HIGHWAY	
UNDIVIDED STATE & FEDERAL ROUTES	
OTHER ROADS	

DESIGN DESIGNATION

CURRENT ADT (2012) 6710
 TRUCKS (24 HOUR BRC) 820
 DESIGN FUNCTIONAL CLASSIFICATION MINOR ARTERIAL

DESIGN EXCEPTIONS NONE REQUIRED

UNDERGROUND UTILITIES
 CONTACT BOTH SERVICES
 CALL TWO WORKING DAYS
 BEFORE YOU DIG

CALL: 1-800-382-2764 (TOLL FREE)
 OHIO UTILITIES PROTECTION SERVICE
 NON-MEMBERS
 MUST BE CALLED DIRECTLY

OIL & GAS PRODUCERS PROTECTIVE
 SERVICE CALL: 1-800-929-0988

INDEX OF SHEETS:

TITLE SHEET	1
TYPICAL SECTIONS	2
GENERAL NOTES	3, 3A
GENERAL SUMMARY	4-5
ESTIMATED QUANTITIES	6-7
PLAN SHEETS	8-9
LIGHTING SHEETS	10-15

2010 SPECIFICATIONS

THE STANDARD SPECIFICATIONS OF THE STATE OF OHIO, DEPARTMENT OF TRANSPORTATION, INCLUDING CHANGES AND SUPPLEMENTAL SPECIFICATIONS LISTED IN THE PROPOSAL SHALL GOVERN THIS IMPROVEMENT.

I HEREBY APPROVE THESE PLANS AND DECLARE THAT THE MAKING OF THIS IMPROVEMENT WILL NOT REQUIRE THE CLOSING TO TRAFFIC OF THE HIGHWAY AND THAT PROVISIONS FOR THE MAINTENANCE AND SAFETY OF TRAFFIC WILL BE AS SET FORTH ON THE PLANS AND ESTIMATES.

APPROVED
 DATE 1/26/12 VILLAGE MANAGER

APPROVED
 DATE 1/27/12 DISTRICT DEPUTY DIRECTOR

APPROVED
 DATE 1/31/12 DIRECTOR, DEPARTMENT OF TRANSPORTATION

STANDARD CONSTRUCTION DRAWINGS						SUPPLEMENTAL SPECIFICATIONS	
BP-2.2	7-18-08	HL-20.11	1-19-07	TC-41.20	1-19-01	800	1-18-13
BP-4.1	7-18-04	HL-30.11	10-18-09	TC-41.40	7-18-04	832	5-6-08
BP-5.1	7-28-00	HL-30.22	4-17-09	TC-42.20	1-21-11		
		HL-40.10	1-18-07				
		HL-60.11	10-21-11				
		HL-60.12	10-21-11				
		HL-60.31	1-19-07				
		MT-105.10	7-20-12				
		MT-110.10	7-20-12				
							SPECIAL PROVISIONS

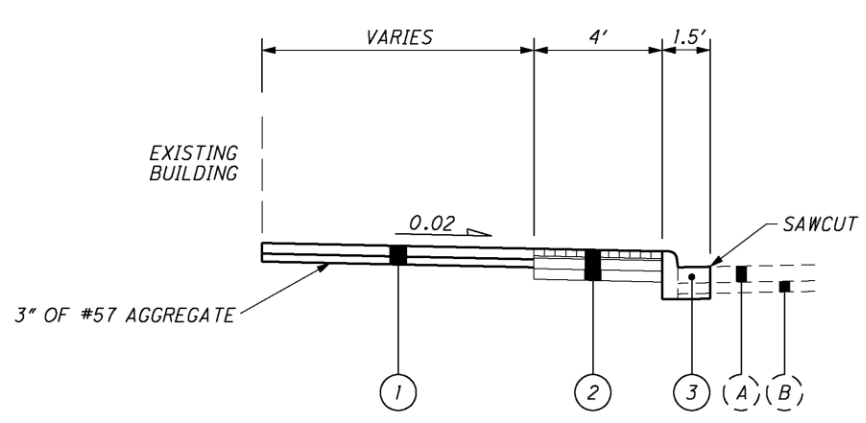
ENGINEERS SEAL:

SIGNED:
 DATE: 1/26/12

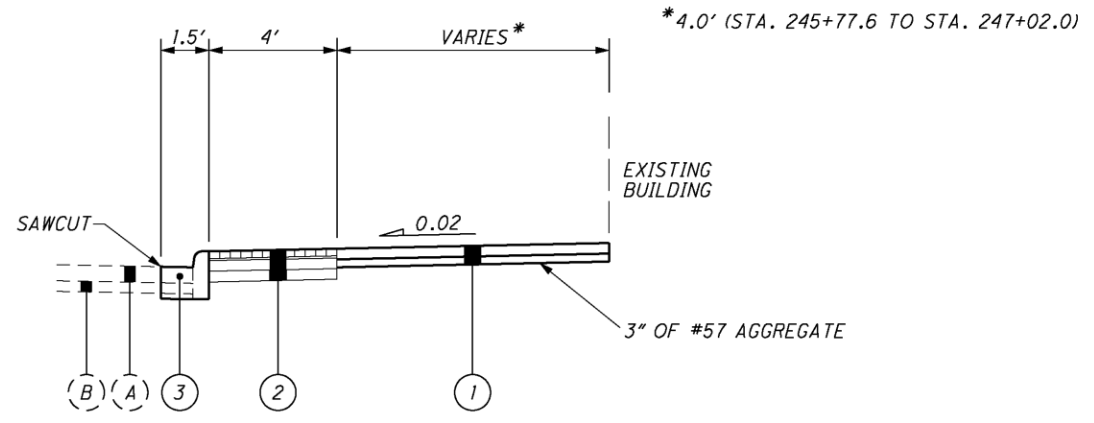
PLAN PREPARED BY:

355 E. Campus View Blvd. - Suite 250
 Columbus, Ohio 43235

LIC - SR-37-4.64 (STREETSCAPE)
 130235 PID - 90053
 Dist 5 4/11/2013
 Contract Proposal Available @ www.contracts.dot.state.oh.us/home



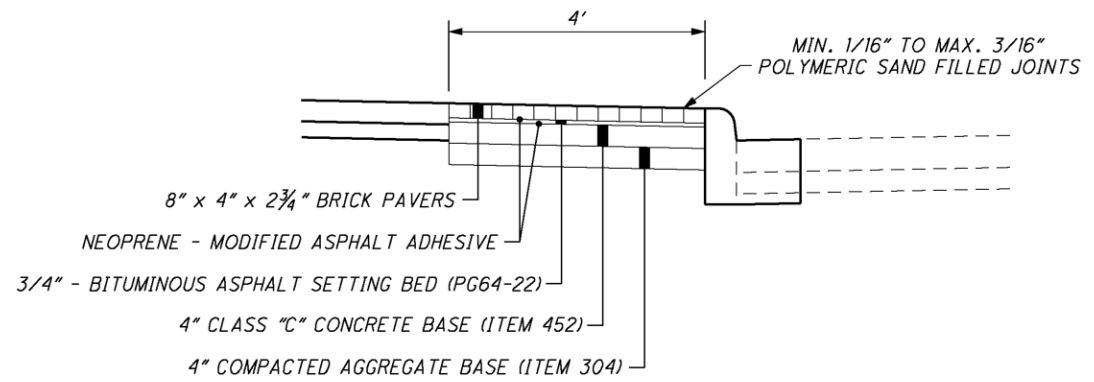
TYPICAL SECTION LT.



TYPICAL SECTION RT.

LEGEND

- ① ITEM 608 - 4" CONCRETE WALK, AS PER PLAN
- ② ITEM 608, WALKWAY MISC.: BRICK PAVERS
- ③ ITEM 609, CURB, TYPE 6, AS PER PLAN
- (A) EXISTING 6"± ASPHALT CONCRETE
- (B) EXISTING 4"± BRICK PAVEMENT



BRICK PAVERS DETAIL

UTILITIES

LISTED BELOW ARE ALL UTILITIES LOCATED WITHIN THE PROJECT CONSTRUCTION LIMITS TOGETHER WITH THEIR RESPECTIVE OWNERS:

ELECTRIC:
AMERICAN ELECTRIC POWER
850 TECH CENTER DRIVE
GAHANNA, OHIO 43230
PHONE: (614) 883-6831
CONTACT: PAUL PAXTON

SANITARY & WATER:
VILLAGE OF JOHNSTOWN
UTILITIES DEPARTMENT
599 S. MAIN STREET
P.O. BOX 457
JOHNSTOWN, OHIO 43031
PHONE: (740) 967-4746
CONTACT: JACK LIGGETT

TELEPHONE:
CENTURYLINK
441 WEST BROAD STREET
PATASKALA, OHIO 43062
PHONE: (740) 927-8282
CONTACT: DEE REED

STORM & TRAFFIC SIGNALS:
VILLAGE OF JOHNSTOWN
STREET DEPARTMENT
599 S. MAIN STREET
P.O. BOX 457
JOHNSTOWN, OHIO 43031
PHONE: (740) 967-4618
CONTACT: JACK LIGGETT

GAS:
COLUMBIA GAS OF OHIO
3550 JOHNNY APPELSEED CT.
COLUMBUS, OHIO 43231
PHONE: (614) 818-2106
CONTACT: RANDALL SEKAVEC

CABLE:
TIME WARNER CABLE
3760 INTERCHANGE ROAD
COLUMBUS, OHIO 43204
PHONE: (614) 255-6340
CONTACT: STEPHEN RAY

THE LOCATION OF THE UNDERGROUND UTILITIES SHOWN ON THE PLANS ARE AS OBTAINED FROM THE OWNERS AS REQUIRED BY SECTION 153.64 O.R.C.

CONSTRUCTION NOISE

ACTIVITIES AND LAND USE ADJACENT TO THIS PROJECT MAY BE AFFECTED BY CONSTRUCTION NOISE. IN ORDER TO MINIMIZE ANY ADVERSE CONSTRUCTION NOISE IMPACTS, DO NOT OPERATE POWER-OPERATED CONSTRUCTION-TYPE DEVICES BETWEEN THE HOURS OF 6:00 PM AND 7:00 AM. IN ADDITION, DO NOT OPERATE AT ANY TIME ANY DEVICE IN SUCH A MANNER THAT THE NOISE CREATED SUBSTANTIALLY EXCEEDS THE NOISE CUSTOMARILY AND NECESSARILY ATTENDANT TO THE REASONABLE AND EFFICIENT PERFORMANCE OF SUCH EQUIPMENT.

EXISTING UTILITY ADJUSTMENTS

VALVE BOXES THAT ARE TO BE ADJUSTED TO GRADE ARE LISTED BELOW, THESE NUMBERS ARE TAKEN FROM FIELD COUNTS, HOWEVER THE ACTUAL NUMBER THAT ARE TO BE ADJUSTED TO GRADE WILL BE DETERMINED BY THE ENGINEER AT THE TIME OF CONSTRUCTION. PAYMENT SHALL BE FOR THE ACTUAL NUMBERS OF EACH ITEM THAT ARE ADJUSTED TO GRADE AS DETERMINED BY THE ENGINEER. WHEN ADJUSTING VALVE BOXES, ALL MATERIALS, LABOR, EQUIPMENT, TOOLS AND ANY OTHER INCIDENTALS AND REMOVAL OF THE EXISTING CONCRETE SHALL BE PAID FOR UNDER EACH ITEM AS SHOWN ON THE GENERAL SUMMARY.

ITEM 604, GAS VALVE BOX ADJUSTED TO GRADE 16 EACH
ITEM 638, VALVE BOX ADJUSTED TO GRADE 1 EACH

CLEARING AND GRUBBING

ALTHOUGH THERE ARE NO TREES OR STUMPS SPECIFICALLY MARKED FOR REMOVAL WITHIN THE LIMITS OF THE PROJECT, A LUMP SUM QUANTITY IS INCLUDED IN THE GENERAL SUMMARY FOR ITEM 201, CLEARING AND GRUBBING.

A TOTAL OF EIGHT (8) 10" TREES HAVE BEEN REMOVED FROM THE TREE GRATES THROUGHOUT THE PROJECT, BUT THE STUMPS REMAIN. THE CONTRACTOR SHALL BE REQUIRED TO REMOVE THE EIGHT (8) STUMPS TO A DEPTH AT LEAST 18 INCHES BELOW GROUND SURFACE.

ALL PROVISIONS AS SET FORTH IN THE SPECIFICATIONS UNDER THIS ITEM ARE INCLUDED IN THE LUMP SUM PRICE BID FOR ITEM 201, CLEARING AND GRUBBING.

SEEDING AND MULCHING

THE FOLLOWING QUANTITIES ARE PROVIDED TO PROMOTE GROWTH AND CARE OF PERMANENT SEEDED AREAS:

ITEM 659, SEEDING AND MULCHING, CLASS I 70 SQ YD

ITEM 659, COMMERCIAL FERTILIZER 0.01 TON
(70 S.Y. x (1 TON / 7410 S.Y.))

ITEM 659, WATER 1 M GAL
(70 S.Y. x 2 x (0.0027 M GAL / 1 S.Y.))

SEEDING AND MULCHING SHALL BE APPLIED TO ALL AREAS OF EXPOSED SOIL WITHIN THE CONSTRUCTION LIMITS. QUANTITY CALCULATIONS FOR SEEDING AND MULCHING ARE BASED ON THESE LIMITS.

ITEM 202, CURB REMOVED, AS PER PLAN

IN ADDITION TO THE REQUIREMENTS OF ITEM 202, THE CONTRACTOR SHALL SAWCUT THE PAVEMENT A UNIFORM DISTANCE OF 1-FOOT FROM THE FACE OF CURB AND CAREFULLY REMOVE THE PAVEMENT BETWEEN THE CURB AND SAWCUT LINE. THE PAVEMENT SHALL BE REMOVED TO A DEPTH OF 12" BELOW GRADE.

PAYMENT SHALL BE MADE AT THE UNIT PRICE BID PER FOOT FOR ITEM 202, CURB REMOVED, AS PER PLAN AND SHALL INCLUDE ALL LABOR, EQUIPMENT, AND MATERIALS NECESSARY TO PERFORM THE WORK NOTED ABOVE, INCLUDING THE PAVEMENT SAWCUT.

ITEM 609, CURB, TYPE 6, AS PER PLAN

IN ADDITION TO THE REQUIREMENTS OF ITEM 609, THE CONTRACTOR SHALL PLACE NON-REINFORCED CONCRETE PAVEMENT MEETING THE REQUIREMENTS OF ITEM 452 IN THE VOID BETWEEN THE FACE OF CURB AND THE SAWCUT LINE IN THE EXISTING PAVEMENT CREATED WHEN THE EXISTING CURB WAS REMOVED. THE NON-REINFORCED CONCRETE PAVEMENT WILL BE 12" WIDE AND 12" DEEP. THE BOTTOM OF THE NON-REINFORCED CONCRETE PAVEMENT SHALL BE FLUSH WITH THE BOTTOM OF THE 18" DEEP CURB.

PAYMENT SHALL BE MADE AT THE UNIT PRICE BID PER FOOT FOR ITEM 609, CURB, TYPE 6, AS PER PLAN AND SHALL INCLUDE ALL LABOR, EQUIPMENT, AND MATERIALS NECESSARY TO PERFORM THE WORK NOTED ABOVE.

ITEM 608, 4" CONCRETE WALK, AS PER PLAN

THE SIDEWALK SHALL HAVE 3-INCHES OF #57 AGGREGATE USED FOR BEDDING OF THE SIDEWALK. THE FINISHED EDGE OF ALL SIDEWALK SHALL BE TOOLED. SIDEWALKS SHALL BE CONSTRUCTED WITH A CROSS SLOPE NOT TO EXCEED 2.0%

PAYMENT SHALL BE MADE AT THE UNIT PRICE BID PER SQUARE FOOT FOR ITEM 608, 4" CONCRETE WALK, AS PER PLAN AND SHALL INCLUDE ALL LABOR, EQUIPMENT, AND MATERIALS NECESSARY TO PERFORM THE WORK NOTED ABOVE.

ITEM 608, WALKWAY, MISC.: BRICK PAVERS

THE CONTRACTOR SHALL INSTALL BRICK PAVERS AS PER THE BRICK PAVERS DETAIL ON SHEET 2.

BRICK PAVERS:

THE BRICK PAVERS SHALL BE PLACED IN A 4' WIDE STRIP USING 8" x 4" x 2 3/4" BRICK PAVERS. ALL BRICK PAVERS SHALL BE FIELD CUT AS REQUIRED FOR PROPER INSTALLATION ADJACENT TO ALL CURBS, AROUND UTILITIES, DRAIN INLETS, MANHOLES, OBSTACLES, ETC.

NEOPRENE-MODIFIED ASPHALT ADHESIVE:

FURNISH NEOPRENE MODIFIED ASPHALT ADHESIVE THAT CONTAINS 2% GRADE WMI NEOPRENE, OXIDIZED ASPHALT WITH A 150 DEGREE SOFTENING POINT (77 PENETRATION), AND 10% LONG-FIBERED INERT MATERIAL.

BITUMINOUS SETTING BED, 3/4 INCH:

FURNISH ASPHALT CEMENT CONFORMING TO ASTM D 3381, PG64-22. FINE AGGREGATE SHALL BE NATURAL SAND AND/OR STONE SAND COMPOSED OF HARD, DURABLE, UNCOATED PARTICLES, FREE FROM CLAY, SILT, ORGANIC MATERIAL, OR OTHER DELETERIOUS SUBSTANCES. ALL SAND SHALL BE UNIFORMLY GRADED AND PASS A NO. 4 SIEVE, MEETING THE REQUIREMENTS OF ASTM C 136. THE DRIED FINE AGGREGATE SHALL BE MIXED WITH HOT ASPHALT CEMENT AT THE PLANT AND HEATED TO APPROXIMATELY 300 DEGREES (F). APPROXIMATE MATERIAL PROPORTIONS SHALL BE 7% ASPHALT CEMENT AND 93% FINE AGGREGATE; OR 140 LBS ASPHALT TO 1,860 LBS FINE AGGREGATE PER TON.

SAND:

ALL JOINTS SHALL BE FILLED WITH POLYMERIC SAND.

PAYMENT SHALL BE MADE AT THE UNIT PRICE BID PER SQUARE FOOT FOR ITEM 608, WALKWAY, MISC.: BRICK PAVERS AND SHALL INCLUDE EXCAVATION, AGGREGATE BASE, CONCRETE BASE SLAB, BITUMINOUS SETTING BED, NEOPRENE ADHESIVE, BRICK PAVERS, AND POLYMER SAND JOINT FILL, AS WELL AS, ALL LABOR, EQUIPMENT, AND MATERIALS NECESSARY TO PERFORM THE WORK NOTED ABOVE.

ITEM 630, GROUND MOUNTED SUPPORT, NO. 4 POST

ALL GROUND MOUNTED SUPPORT POSTS SHALL BE SQUARE (TYPE S), AS PER STD. DWG. TC-41.20.

CALCULATED
LMO
CHECKED
KJG

GENERAL NOTES

LIC-S.R. 37-4.64
(STREETSCAPE)

ITEM 690, SPECIAL - MISC.: BENCH

THE CONTRACTOR SHALL PROVIDE AND INSTALL A 6' DECORATIVE PARK BENCH AT LOCATIONS SHOWN IN THE PLANS. THE DECORATIVE PARK BENCH SHALL BE MADE FOR OUTSIDE USE AND SHALL HAVE A METAL FRAME. THE FRAME SHALL BE PAINTED BLACK.

THE PARK BENCH SHALL BE A "RENDEZVOUS" STYLE, MODEL #L1360 AS MANUFACTURED BY LANDSCAPE BRANDS, 211 NORTH LINDBERGH BLVD., ST. LOUIS, MO 63141, A "ASHBROOKE" STYLE, MODEL #AH101-72 AS MANUFACTURED BY BRP BY BISON, 603 "L" STREET, LINCOLN, NE 68508 OR APPROVED EQUAL.

PAYMENT SHALL BE MADE AT THE UNIT PRICE BID PER EACH FOR ITEM 690, SPECIAL - MISC.: BENCH AND SHALL INCLUDE ALL LABOR, EQUIPMENT, AND MATERIALS NECESSARY TO PERFORM THE WORK NOTED ABOVE.

ITEM SPECIAL - MISC.: TRASH RECEPTACLE

THE CONTRACTOR SHALL PROVIDE AND INSTALL A DECORATIVE TRASH RECEPTACLE AT LOCATIONS SHOWN IN THE PLANS. THE DECORATIVE TRASH RECEPTACLE SHALL BE MADE FOR OUTSIDE USE AND SHALL HAVE SLOTTED STEEL BARS AND A REUSABLE PLASTIC LINER. THE FRAME SHALL BE PAINTED BLACK.

THE TRASH RECEPTACLE SHALL BE A "RENDEZVOUS" STYLE, MODEL #L1378 WITH A MODEL #F3202 BONNET LID AS MANUFACTURED BY LANDSCAPE BRANDS, 211 NORTH LINDBERGH BLVD., ST. LOUIS, MO 63141, A "ASHBROOKE" STYLE, MODEL #AH401-DT WITH A DOME TOP AS MANUFACTURED BY BRP BY BISON, 603 "L" STREET, LINCOLN, NE 68508 OR APPROVED EQUAL.

PAYMENT SHALL BE MADE AT THE UNIT PRICE BID PER EACH FOR ITEM 690, SPECIAL - MISC.: TRASH RECEPTACLE AND SHALL INCLUDE ALL LABOR, EQUIPMENT, AND MATERIALS NECESSARY TO PERFORM THE WORK NOTED ABOVE.

ITEM SPECIAL - MISC.: PLANTER

THE CONTRACTOR SHALL PROVIDE AND INSTALL A DECORATIVE PLANTER AT LOCATIONS SHOWN IN THE PLANS. THE DECORATIVE PLANTER SHALL BE MADE FOR OUTSIDE USE AND SHALL BE PAINTED BLACK.

THE PLANTER SHALL BE A "RENDEZVOUS" STYLE, MODEL #L1385 AS MANUFACTURED BY LANDSCAPE BRANDS, 211 NORTH LINDBERGH BLVD., ST. LOUIS, MO 63141, A "ASHBROOKE" STYLE, MODEL #AH601 AS MANUFACTURED BY BRP BY BISON, 603 "L" STREET, LINCOLN, NE 68508 OR APPROVED EQUAL.

PAYMENT SHALL BE MADE AT THE UNIT PRICE BID PER EACH FOR ITEM 690, SPECIAL - MISC.: PLANTER AND SHALL INCLUDE ALL LABOR, EQUIPMENT, AND MATERIALS NECESSARY TO PERFORM THE WORK NOTED ABOVE.

ITEM 202, REMOVAL MISC.: BENCH REMOVED FOR STORAGE
ITEM 202, REMOVAL MISC.: TRASH RECEPTACLE REMOVED FOR STORAGE

ALL BENCHES AND TRASH RECEPTACLES REMOVED SHALL BECOME THE PROPERTY OF THE VILLAGE OF JOHNSTOWN. THE CONTRACTOR SHALL CAREFULLY REMOVE THESE ITEMS, CAREFULLY TRANSPORT THEM TO A LOCATION WITHIN THE VILLAGE (94 EAST COLLEGE AVENUE (REAR), JOHNSTOWN, OHIO 43031), AND SHALL CAREFULLY UNLOAD AND STORE THEM AS DIRECTED. THE CONTRACTOR SHALL CONTACT JACK LIGGETT (740-967-4746) TO COORDINATE DELIVERY OF ITEMS. ANY ITEMS DESIGNATED AS "UNUSABLE" BY THE VILLAGE SHALL BE PROPERLY DISPOSED OF BY THE CONTRACTOR.

ITEM 202, REMOVAL MISC.: TREE GRATE REMOVED

THE CONTRACTOR SHALL REMOVE AND DISPOSE OF THE TREE GRATE AND FRAME AT THE LOCATIONS CALLED FOR ON THE PLANS.

PAYMENT SHALL BE MADE AT THE UNIT PRICE BID PER EACH FOR ITEM 202, REMOVAL MISC.: TREE GRATE REMOVED AND SHALL INCLUDE ALL LABOR, EQUIPMENT, AND MATERIALS NECESSARY TO PERFORM THE WORK NOTED ABOVE.

ITEM 202, REMOVAL MISC.: BRICK WALK REMOVED

THE CONTRACTOR SHALL REMOVE AND DISPOSE OF THE BRICK WALK AT THE LOCATIONS CALLED FOR ON THE PLANS.

PAYMENT SHALL BE MADE AT THE UNIT PRICE BID PER SQUARE FOOT FOR ITEM 202, REMOVAL MISC.: BRICK WALK REMOVED AND SHALL INCLUDE ALL LABOR, EQUIPMENT, AND MATERIALS NECESSARY TO PERFORM THE WORK NOTED ABOVE.

BIGELOW PARK AND MONROE TOWNSHIP HALL AND OPERA HOUSE PROPERTY AVOIDANCE

THE FEDERAL HIGHWAY ADMINISTRATION HAS DETERMINED THAT BIGELOW PARK IS A RECREATIONAL RESOURCE AND MONROE TOWNSHIP HALL AND OPERA HOUSE IS A HISTORICAL PROPERTY PROTECTED UNDER SECTION 4(f) OF THE DEPARTMENT OF TRANSPORTATION ACT 1966. THEREFORE, NO CONSTRUCTION ACTIVITIES OR ANCILLARY CONSTRUCTION ACTIVITIES CAN OCCUR WITHIN THE LIMITS OF THE PROPERTIES. FOR EXAMPLE, NO STAGING OF EQUIPMENT IN THE SLLSD PARKING LOT, NO WASTE OR BORROW ON THE BIGELOW PARK AND MONROE TOWNSHIP HALL AND OPERA HOUSE PROPERTIES. ACCESS MUST BE MAINTAINED TO THE PARK AND PARKING LOT AT ALL TIMES.

ITEM 614, MAINTAINING TRAFFIC

ONE LANE OF TRAFFIC IN EACH DIRECTION ON SR-37 (S. MAIN ST.) SHALL BE MAINTAINED AT ALL TIMES BY USE OF THE EXISTING PAVEMENT. CONSTRUCTION SHALL BE LIMITED TO ONE SIDE OF THE ROAD AT A TIME. DURING CONSTRUCTION, TEMPORARY CLOSURE OF PARKING ADJACENT TO THE CURB AND WALK IS PERMITTED.

THE CONTRACTOR SHALL COORDINATE SIDEWALK CONSTRUCTION WITH ABUTTING PROPERTY OWNERS / BUSINESSES TO ENSURE ADEQUATE ACCESS IS MAINTAINED TO ABUTTING PROPERTIES AT ALL TIMES. THE CONTRACTOR SHALL PROVIDE A MINIMUM OF 72 HOURS NOTICE TO PROPERTY OWNERS / BUSINESSES WHEN SIDEWALK CONSTRUCTION DIRECTLY AFFECTS ACCESS TO THEIR ENTRY. IT IS ANTICIPATED THAT PORTIONS OF SIDEWALK CONSTRUCTION IN FRONT OF DOORWAYS MAY NEED TO BE COMPLETED DURING NON-BUSINESS HOURS IN ORDER TO ACCOMMODATE ACCESS NEEDS.

THE CONTRACTOR SHALL PROVIDE, ERECT AND MAINTAIN SIGNS AND SIGN SUPPORTS, AS DETAILED IN THE OHIO MANUAL OF UNIFORM TRAFFIC CONTROL DEVICES.

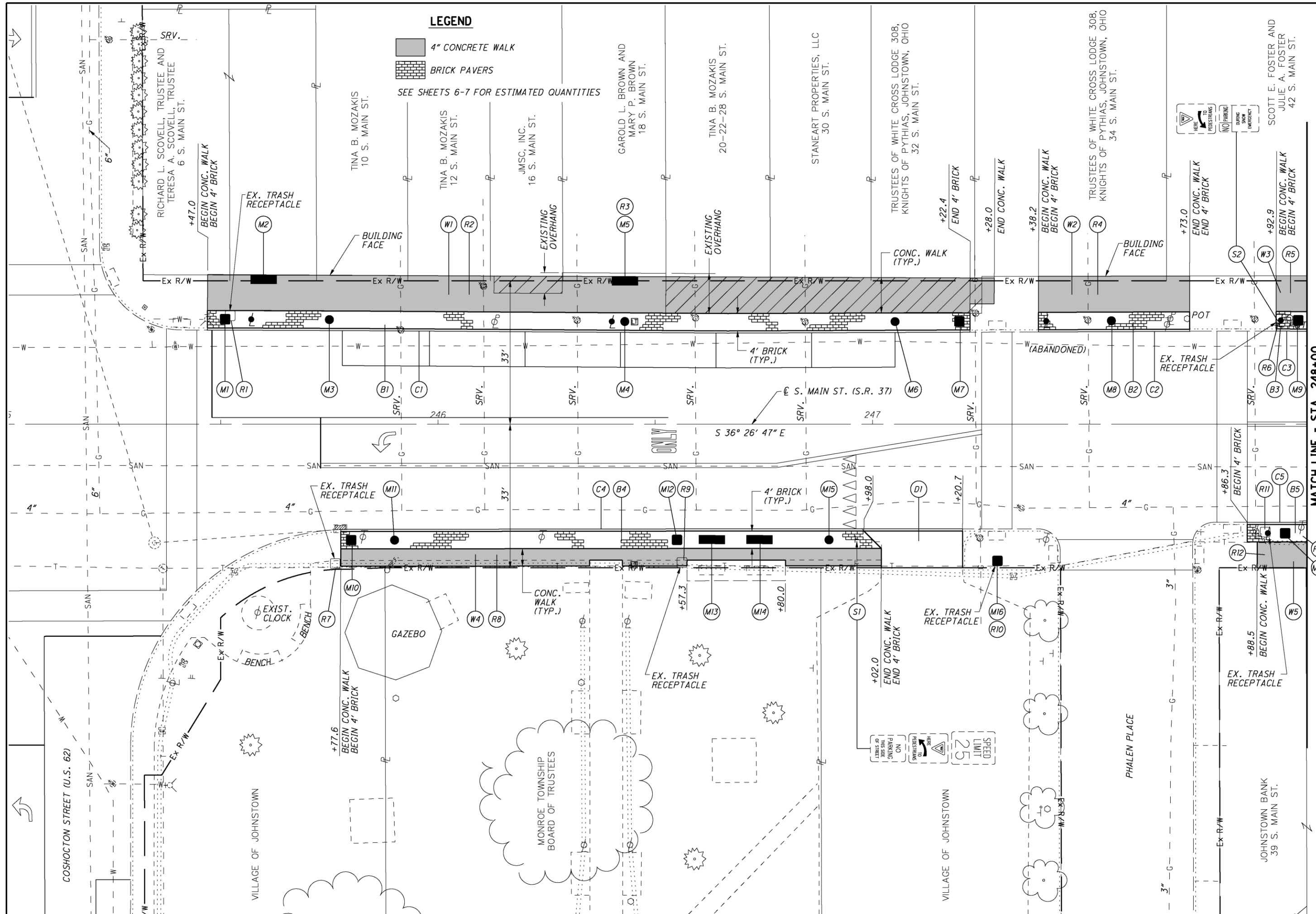
ALL WORK AND TRAFFIC CONTROL DEVICES SHALL BE IN ACCORDANCE WITH CMS 614 AND OTHER APPLICABLE PORTIONS OF THE SPECIFICATIONS, AS WELL AS THE OHIO MANUAL OF UNIFORM TRAFFIC CONTROL DEVICES. PAYMENT FOR ALL LABOR, EQUIPMENT AND MATERIALS SHALL BE INCLUDED IN THE LUMP SUM CONTRACT PRICE FOR ITEM 614, MAINTAINING TRAFFIC, UNLESS SEPARATELY ITEMIZED IN THE PLAN.

REF NO.	SHEET NO.	STATION		SIDE	202	202	204	452	608	609	SPECIAL	SPECIAL	SPECIAL					
		FROM	TO		PAVEMENT REMOVED SQ YD	CURB REMOVED, AS PER PLAN FT	SUBGRADE COMPACTION SQ YD	8" NON-REINFORCED CONCRETE PAVEMENT SQ YD	WALKWAY, MISC.: BRICK PAVERS SQ FT	CURB, TYPE 6, AS PER PLAN FT	MISC.: BENCH EACH	MISC.: TRASH RECEPTACLE EACH	MISC.: PLANTER EACH					
B1	8	245+47.0	247+22.4	LT.					702									
B2	8	247+38.2	247+73.0	LT.					140									
B3	8-9	247+92.9	250+50.7	LT.					1032									
B4	8	245+77.6	247+02.0	RT.					490									
B5	8-9	247+86.3	250+55.7	RT.					1078									
C1	8	245+47.0	247+22.4	LT.		175				175								
C2	8	247+38.2	247+73.0	LT.		35				35								
C3	8-9	247+92.9	250+50.7	LT.		258				258								
C4	8	245+77.6	247+20.7	RT.		143				143								
C5	8-9	247+86.3	250+55.7	RT.		269				269								
D1	8	246+98.0	247+20.7	RT.	19		19	19										
M1	8	245+51		LT.								1						
M2	8	245+60		LT.														
M3	8	245+75		LT.														
M4	8	246+43		LT.														
M5	8	246+43		LT.								1						
M6	8	247+05		LT.														
M7	8	247+20		LT.														
M8	8	247+55		LT.														
M9	8	247+98		LT.														
M10	8	245+80		RT.														
M11	8	245+90		RT.														
M12	8	246+55		RT.														
M13	8	246+63		RT.														
M14	8	246+74		RT.								1						
M15	8	246+90		RT.														
M16	8	247+29		RT.														
M17	8	247+95		RT.														
M18	9	248+05		LT.														
M19	9	248+05		LT.														
M20	9	248+96		LT.														
M21	9	249+66		LT.														
M22	9	250+07		LT.														
M23	9	250+31		LT.														
M24	9	250+45		LT.														
M25	9	248+05		RT.														
M26	9	248+96		RT.														
M27	9	248+98		RT.														
M28	9	249+42		RT.														
M29	9	249+67		RT.														
M30	9	250+25		RT.														
M31	9	250+31		RT.														
M32	9	250+54		RT.														
TOTALS CARRIED TO GENERAL SUMMARY					19	880	19	19	3442	880	8	10	14					

CALCULATED
LMO
CHECKED
KJG

ESTIMATED QUANTITIES

LIC-S.R. 37-4.64
(STREETSCAPE)



LEGEND

- 4" CONCRETE WALK
- BRICK PAVERS

SEE SHEETS 6-7 FOR ESTIMATED QUANTITIES

CALCULATED
LAM
CHECKED
KJG

0 10 20
HORIZONTAL
SCALE IN FEET

PLAN SHEET
STA. 245+00 TO STA. 248+00

LIC-S.R. 37-4.64
(STREETSCAPE)

MATCH LINE - STA. 248+00

SCOTT E. FOSTER AND
JULIE A. FOSTER
42 S. MAIN ST.

TRUSTEES OF WHITE CROSS LODGE 308,
KNIGHTS OF PYTHIAS, JOHNSTOWN, OHIO
34 S. MAIN ST.

TRUSTEES OF WHITE CROSS LODGE 308,
KNIGHTS OF PYTHIAS, JOHNSTOWN, OHIO
32 S. MAIN ST.

STANEART PROPERTIES, LLC
30 S. MAIN ST.

TINA B. MOZAKIS
20-22-28 S. MAIN ST.

GAROLD L. BROWN AND
MARY P. BROWN
18 S. MAIN ST.

JMSC, INC.
16 S. MAIN ST.

TINA B. MOZAKIS
12 S. MAIN ST.

TINA B. MOZAKIS
10 S. MAIN ST.

RICHARD L. SCOVELL, TRUSTEE AND
TERESA A. SCOVELL, TRUSTEE
6 S. MAIN ST.

COSHOCTON STREET (U.S. 62)

VILLAGE OF JOHNSTOWN

MONROE TOWNSHIP
BOARD OF TRUSTEES

VILLAGE OF JOHNSTOWN

PHALEN PLACE

JOHNSTOWN BANK
39 S. MAIN ST.

SPEED
LIMIT
25

HERE TO
RESURFACING

NO
PARKING
ON
SIDE
OF
STREET

HERE TO
PEDESTRIANS

NO
PARKING

NO
STOPPING
OR
STANDING

EX. TRASH
RECEPTACLE

POT

(ABANDONED)

S. MAIN ST. (S.R. 37)

ONLY

ONLY

EXIST.
CLOCK

GAZEBO

BENCH

BENCH

BEGIN CONC. WALK
BEGIN 4' BRICK

BEGIN CONC. WALK
BEGIN 4' BRICK

END CONC. WALK
END 4' BRICK

END CONC. WALK
END 4' BRICK

BEGIN CONC. WALK
BEGIN 4' BRICK

BEGIN CONC. WALK
BEGIN 4' BRICK

END CONC. WALK
END 4' BRICK

END CONC. WALK
END 4' BRICK

BEGIN CONC. WALK
BEGIN 4' BRICK

BEGIN CONC. WALK
BEGIN 4' BRICK

END 4' BRICK

END 4' BRICK

BEGIN 4' BRICK

BEGIN CONC. WALK

EX. TRASH
RECEPTACLE

BEGIN CONC. WALK
BEGIN 4' BRICK

END CONC. WALK
END 4' BRICK

END CONC. WALK
END 4' BRICK

BEGIN 4' BRICK

BEGIN CONC. WALK

EX. TRASH
RECEPTACLE

BEGIN CONC. WALK
BEGIN 4' BRICK

END CONC. WALK
END 4' BRICK

END CONC. WALK
END 4' BRICK

BEGIN 4' BRICK

BEGIN CONC. WALK

EX. TRASH
RECEPTACLE

BEGIN CONC. WALK
BEGIN 4' BRICK

BEGIN CONC. WALK
BEGIN 4' BRICK

BEGIN CONC. WALK
BEGIN 4' BRICK

BEGIN 4' BRICK

BEGIN CONC. WALK

EX. TRASH
RECEPTACLE

BEGIN CONC. WALK
BEGIN 4' BRICK

END CONC. WALK

END CONC. WALK

BEGIN 4' BRICK

BEGIN CONC. WALK

EX. TRASH
RECEPTACLE

BEGIN CONC. WALK
BEGIN 4' BRICK

END 4' BRICK

END 4' BRICK

BEGIN 4' BRICK

BEGIN CONC. WALK

EX. TRASH
RECEPTACLE

BEGIN CONC. WALK
BEGIN 4' BRICK

END CONC. WALK

END CONC. WALK

BEGIN 4' BRICK

BEGIN CONC. WALK

EX. TRASH
RECEPTACLE

BEGIN CONC. WALK
BEGIN 4' BRICK

END CONC. WALK

END CONC. WALK

BEGIN 4' BRICK

BEGIN CONC. WALK

EX. TRASH
RECEPTACLE

BEGIN CONC. WALK
BEGIN 4' BRICK

END CONC. WALK

END CONC. WALK

BEGIN 4' BRICK

BEGIN CONC. WALK

EX. TRASH
RECEPTACLE

BEGIN CONC. WALK
BEGIN 4' BRICK

END CONC. WALK

END CONC. WALK

BEGIN 4' BRICK

BEGIN CONC. WALK

EX. TRASH
RECEPTACLE

BEGIN CONC. WALK
BEGIN 4' BRICK

END CONC. WALK

END CONC. WALK

BEGIN 4' BRICK

BEGIN CONC. WALK

EX. TRASH
RECEPTACLE

BEGIN CONC. WALK
BEGIN 4' BRICK

END CONC. WALK

END CONC. WALK

BEGIN 4' BRICK

BEGIN CONC. WALK

EX. TRASH
RECEPTACLE

BEGIN CONC. WALK
BEGIN 4' BRICK

END CONC. WALK

END CONC. WALK

BEGIN 4' BRICK

BEGIN CONC. WALK

EX. TRASH
RECEPTACLE

BEGIN CONC. WALK
BEGIN 4' BRICK

END CONC. WALK

END CONC. WALK

BEGIN 4' BRICK

BEGIN CONC. WALK

EX. TRASH
RECEPTACLE

BEGIN CONC. WALK
BEGIN 4' BRICK

END CONC. WALK

END CONC. WALK

BEGIN 4' BRICK

BEGIN CONC. WALK

EX. TRASH
RECEPTACLE

BEGIN CONC. WALK
BEGIN 4' BRICK

END CONC. WALK

END CONC. WALK

BEGIN 4' BRICK

BEGIN CONC. WALK

EX. TRASH
RECEPTACLE

BEGIN CONC. WALK
BEGIN 4' BRICK

END CONC. WALK

END CONC. WALK

BEGIN 4' BRICK

BEGIN CONC. WALK

EX. TRASH
RECEPTACLE

BEGIN CONC. WALK
BEGIN 4' BRICK

END CONC. WALK

END CONC. WALK

BEGIN 4' BRICK

BEGIN CONC. WALK

EX. TRASH
RECEPTACLE

BEGIN CONC. WALK
BEGIN 4' BRICK

END CONC. WALK

END CONC. WALK

BEGIN 4' BRICK

BEGIN CONC. WALK

EX. TRASH
RECEPTACLE

BEGIN CONC. WALK
BEGIN 4' BRICK

END CONC. WALK

END CONC. WALK

BEGIN 4' BRICK

BEGIN CONC. WALK

EX. TRASH
RECEPTACLE

BEGIN CONC. WALK
BEGIN 4' BRICK

END CONC. WALK

END CONC. WALK

BEGIN 4' BRICK

BEGIN CONC. WALK

EX. TRASH
RECEPTACLE

BEGIN CONC. WALK
BEGIN 4' BRICK

END CONC. WALK

END CONC. WALK

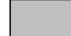

BEGIN 4' BRICK

BEGIN CONC. WALK

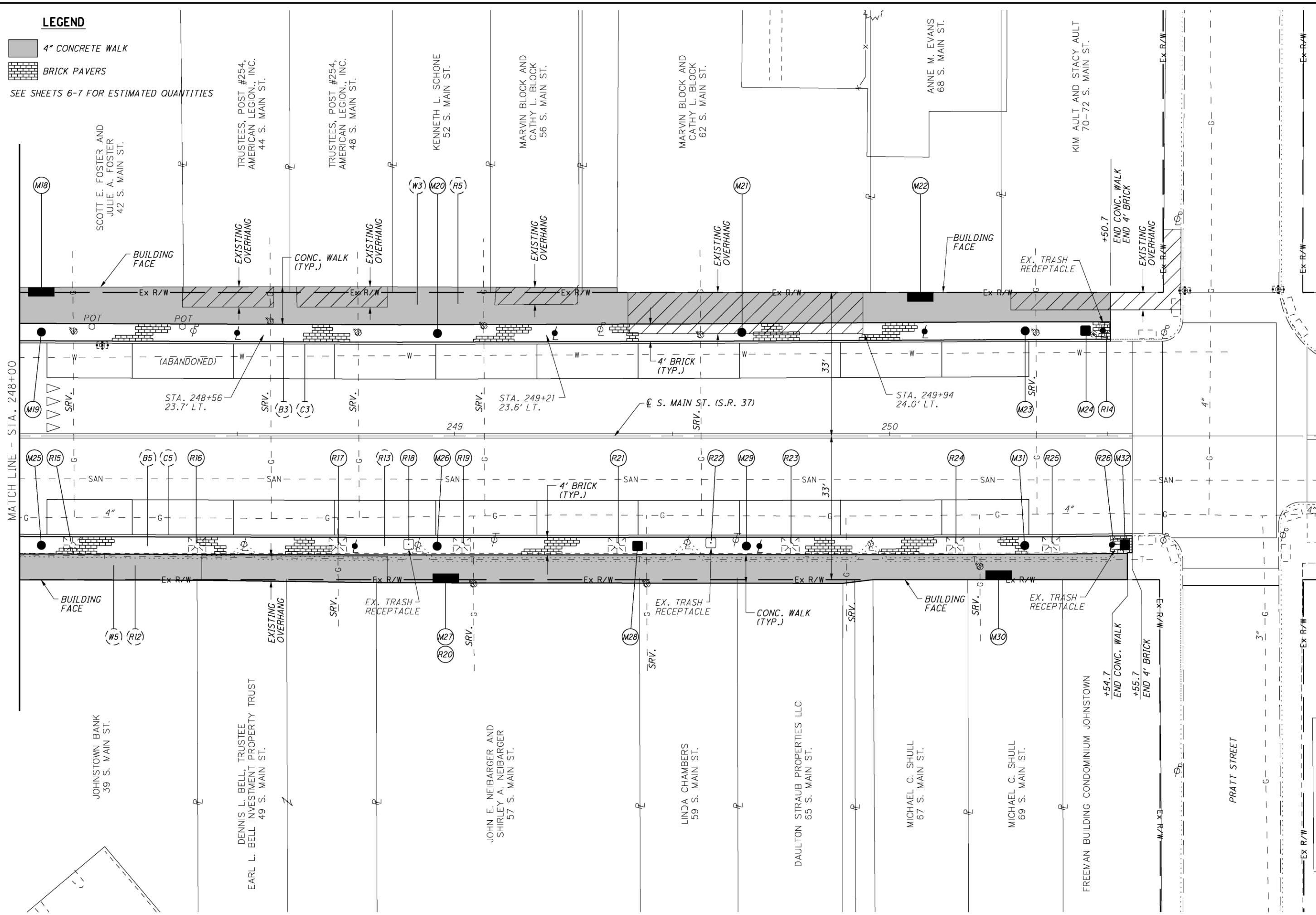
EX. TRASH
RECEPTACLE

BEGIN CONC. WALK
BEGIN 4' BRICK

LEGEND

-  4" CONCRETE WALK
-  BRICK PAVERS

SEE SHEETS 6-7 FOR ESTIMATED QUANTITIES



CALCULATED LAM CHECKED KJG

0 10 20
HORIZONTAL SCALE IN FEET

10
15

PLAN SHEET
STA. 248+00 TO STA. 251+00

LIC-S.R. 37-4.64
(STREETSCAPE)

GUARANTEE

THE CONTRACTOR SHALL GUARANTEE THAT THE LIGHTING EQUIPMENT INSTALLED AS PART OF THE CONTRACT SHALL OPERATE SATISFACTORILY FOR A PERIOD OF NINETY (90) DAYS. IN THE EVENT OF UNSATISFACTORY OPERATIONS, THE CONTRACTOR SHALL CORRECT FAULTY INSTALLATIONS, MAKE REPAIRS AND REPLACE DEFECTIVE PARTS WITH NEW PARTS FROM THE SAME MANUFACTURER. MATERIAL AND LABOR COSTS INCURRED IN CORRECTING THE UNSATISFACTORY OPERATIONS SHALL BE BORNE BY THE CONTRACTOR. THE GUARANTEE SHALL COVER THE FOLLOWING ITEMS: LIGHTING CONTROL CENTER IMPROVEMENTS, LIGHT POLES, AND DECORATIVE LUMINAIRES. CUSTOMARY MANUFACTURER'S GUARANTEE FOR THE FOREGOING ITEMS SHALL BE TURNED OVER TO THE VILLAGE FOLLOWING ACCEPTANCE OF THE EQUIPMENT. THE COST OF GUARANTEEING THE LIGHTING EQUIPMENT SHALL BE INCIDENTAL TO AND INCLUDED IN THE CONTRACT UNIT PRICE OF THE VARIOUS ITEMS MAKING UP THIS INSTALLATION.

ITEM 625, LIGHT POLE DECORATIVE (13'-8"), AS PER PLAN

THE DECORATIVE LIGHT POLES SHALL BE A STERNBERG BARRINGTON SERIES (MODEL 5213"8" ETFP6/SCO/GFB/FH/DBA/BK) 13'-8" POLE, A WHATLEY XTREME SERIES (MODEL XF45-D13M/13'-8"/AB/MTB/30/-30/RC/2-BA-18/FPH) 13'-8" POLE OR APPROVED EQUAL. THE POLES SHALL HAVE A BLACK FINISH AS INDICATED BY THE MODEL NUMBERS. THESE LIGHT POLES SHALL HAVE AN INTEGRAL FESTOON GFC OUTLET WITH COVER, FACTORY ATTACHED AND FINISHED, LOCATED ONE (1) FOOT BELOW THE TOP OF THE LIGHT POLE. THE FESTOON OUTLETS SHALL BE ORIENTED DURING INSTALLATION TO FACE 180 DEGREES AWAY FROM THE CENTERLINE OF MAIN STREET AND FACE THE SIDEWALK. THE FESTOON OUTLETS SHALL BE WIRED TO BE OPERATIONAL ONLY WHEN THE LIGHTING CIRCUIT IS TURNED ON BY THE PHOTO CELL CONTROL AT THE LIGHTING CONTROL CENTER AS SHOWN ON SHEET 14. THE FESTOON OULET RECEPTACLES SHALL BE RATED AS A 15 AMP, 125 VOLT, 2 POLE, 3-WIRE, GROUNDING TYPE RECEPTACLE, IVORY IN COLOR. THE POLES SHALL INCLUDE A SET OF FIXED BANNER ARMS AND A FLAG POLE HOLDER BOTH MANUFACTURED BY THE SAME VENDOR AS THE POLE, HAVING THE SAME COLOR AND FINISH AS THE POLE. THE SET OF FIXED BANNER ARMS SHALL EXTEND OUT APPROXIMATELY 15" TO 18" FROM THE SIDE OF THE POLE. THE FESTOON GFC OUTLET WITH COVER, ASSOCIATED WIRING, FLAG POLE HOLDER AND SET OF FIXED BANNER HOLDERS SHALL BE PROVIDED UNDER THIS PAY ITEM.

SHOP DRAWINGS MUST BE SUBMITTED TO THE VILLAGE FOR REVIEW AT LEAST SEVEN (7) DAYS PRIOR TO ORDERING MATERIALS FOR REVIEW AND APPROVAL.

PAYMENT FOR THIS ITEM SHALL BE MADE AT THE UNIT PRICE BID PER EACH INCLUDING ALL BRACKET ARMS AND OUTLET HARDWARE, COMPLETE AND IN PLACE, ALL CONNECTIONS TESTED AND ACCEPTED.

ITEM 625, LIGHT POLE ANCHOR L-BOLTS, AS PER PLAN

THE CONTRACTOR SHALL PROVIDE ALL NECESSARY ANCHOR BOLTS PER THE POLE MANUFACTURER'S MINIMUM LENGTH, GRADE AND TYPE. THE POLE VENDOR SHALL SUPPLY THE ANCHOR BOLTS.

PAYMENT FOR THIS ITEM SHALL BE MADE AT THE UNIT PRICE BID PER EACH.

ITEM 625, LUMINAIRE, DECORATIVE, AS PER PLAN

THE LED LUMINAIRE STYLE IS INTENDED TO MATCH THE HISTORIC VILLAGE OF JOHNSTOWN LUMINAIRES, AND SHALL BE A STERNBERG LIGHTING BRAND FIXTURE, A HOLOPHANE LIGHTING BRAND FIXTURE OR APPROVED EQUAL. MODEL NUMBERS AND DESCRIPTIONS ARE AS FOLLOWS:

- STERNBERG HOMETOWN LED LUMINAIRE
PART #G743LED/OLF-CF-3"/BXRAA5JUD7/BKT
 - COMPLETE GLASS ACORN FIXTURE TO SLIP 3" OD TENON
 - 67 WATT LED ARRAY, 5350 LUMENS, 4000K COLOR TEMP
 - TYPE 3 DISTRIBUTION
- HOLOPHANE GRANVILLE PREMIER II LED LUMINAIRE
PART #GPD-60-4K-AS-T-B-3-N-C-U-LIH
 - COMPLETE GLASS ACORN FIXTURE TO SLIP 3" OD TENON
 - 60 WATT LED ARRAY, 4000K COLOR TEMP
 - TYPE 3 DISTRIBUTION

LIGHTING PLAN CALL OUTS ARE ON SHEETS 11-13. SHOP DRAWINGS MUST BE SUBMITTED TO THE VILLAGE FOR REVIEW AT LEAST SEVEN (7) DAYS PRIOR TO ORDERING MATERIALS FOR REVIEW AND APPROVAL.

PAYMENT FOR THIS ITEM SHALL BE MADE AT THE UNIT BID PRICE FOR EACH COMPLETE AND IN PLACE, ALL CONNECTIONS TESTED AND ACCEPTED.

ITEM 625, CONTROL CENTER MAINTENANCE ITEM, AS PER PLAN

IT IS THE INTENT OF THIS ITEM THAT THE EXISTING DOWNTOWN LIGHTING CONTROL CENTER (LCC) CABINET FOR THE VILLAGE OF JOHNSTOWN OPERA HOUSE COMMONS PERIMETER STREET LIGHTING BE USED TO SERVICE THE STREET LIGHT IMPROVEMENTS CONTAINED IN THESE PLANS. THE TWO EXISTING LIGHTING CIRCUITS, CIRCUITS A AND B, WILL HAVE TWO LIGHT POLES REMOVED, FOUR LIGHT POLES RELOCATED AND EIGHT LIGHT POLES ADDED. THE EX. LCC CONTAINS TWO (2) ACTIVE 30 AMP CIRCUITS. THE LOCATION OF THE EX. LCC IS SHOWN ON THE PLANS AS IS THE SCHEMATIC FOR THE LCC IMPROVEMENTS. WHILE THE UPGRADE WORK IS BEING PERFORMED ON THE LCC, THE LIGHT POLES TO REMAIN ACTIVE ON THE EXISTING LIGHTING CIRCUITS FOR THE VILLAGE OF JOHNSTOWN OPERA HOUSE COMMONS PERIMETER STREET LIGHTING SHALL REMAIN OPERATIONAL AT ALL TIMES. ANY ADDITIONAL COST OR WORK TO ACCOMPLISH THIS SHALL BE CONSIDERED INCIDENTAL TO THIS PAY ITEM.

IN ADDITION TO ODOT ITEM 625, THE FOLLOWING WORK SHALL BE PERFORMED UNDER THIS PAY ITEM:

1. THE EXISTING NEUTRAL IN THE LCC SHALL BE EXTENDED TO SERVICE THE STREET LIGHT ALTERATIONS ON THE TWO EXISTING LIGHTING CIRCUITS. THE CONTRACTOR SHALL CONFIRM THAT THE EX. NEUTRAL IS AWG #4 AND PROVIDE A NEW AWG #4 NEUTRAL, IF IT IS NOT.
2. THE TWO (2) EXISTING LIGHTING CIRCUITS SHALL CONTINUE TO RUN OFF THE EXISTING PHOTO CELL CONTROL FOR THE DOWNTOWN LCC. THE FESTOON OUTLETS ON THE LIGHT POLES WITHIN LIGHTING CIRCUITS A AND B SHALL ALSO RUN OFF THE EXISTING PHOTO CELL CONTROL FOR THE DOWNTOWN LCC.
3. THE CONTRACTOR SHALL TEST AND CONFIRM THAT THE EXISTING GROUND PROVIDED AT THE DOWNTOWN LCC MEET ODOT ELECTRICAL STANDARDS FOR THE UPDATED LIGHTING CIRCUITS. IF THE GROUND TEST FAILS, THE CONTRACTOR SHALL PROVIDE A PROPER ELECTRICAL GROUND FOR THE DOWNTOWN LCC.

4. ALL LIGHTING IMPROVEMENT WORK TO THE LCC SHALL MEET ALL ODOT ELECTRICAL STANDARDS AS WELL AS THOSE OF ANY OTHER APPLICABLE ELECTRICAL STANDARDS/CODES.

PAYMENT FOR THIS ITEM SHALL BE MADE AT THE UNIT PRICE BID PER EACH INCLUDING ALL NECESSARY HARDWARE, COMPLETE AND IN PLACE, ALL CONNECTIONS TESTED AND ACCEPTED.

**ITEM 625, LIGHT POLE REMOVED FOR STORAGE, AS PER PLAN
ITEM 625, LUMINAIRE REMOVED FOR STORAGE, AS PER PLAN**

IN ADDITION TO ODOT ITEM 625, THE LIGHT POLES, LUMINAIRES AND ALL OTHER LIGHTING COMPONENTS NOT USED IN THE COMPLETED INSTALLATION SHALL BECOME THE PROPERTY OF THE VILLAGE OF JOHNSTOWN. THE CONTRACTOR SHALL CAREFULLY REMOVE THESE ITEMS, CAREFULLY TRANSPORT THEM TO A LOCATION WITHIN THE VILLAGE (94 EAST COLLEGE AVENUE (REAR), JOHNSTOWN, OHIO 43031), AND SHALL CAREFULLY UNLOAD AND STORE THEM AS DIRECTED. THE CONTRACTOR SHALL CONTACT JACK LIGGETT (740-967-4746) TO COORDINATE DELIVERY OF ITEMS. ANY ITEMS DESIGNATED AS "UNUSABLE" BY THE VILLAGE SHALL BE PROPERLY DISPOSED OF BY THE CONTRACTOR.

ITEM 625, PORTION OF LIGHT POLE FOUNDATION REMOVED, AS PER PLAN

IN ADDITION TO ODOT ITEM 625, IT IS THE INTENT OF THE PLANS THAT THE TOP PORTION OF THE FOUNDATION BE REMOVED TO A DEPTH OF TWO (2) FEET BELOW GRADE. PAYMENT SHALL BE MADE AT THE UNIT PRICE BID FOR THIS ITEM.

ITEM 625, CONNECTION, FUSED PULL APART, AS PER PLAN

IN ADDITION TO THE SPECIFICATIONS FOR ITEM 625, THE FUSED CONNECTION SHALL BE RATED AT 15 AMPERES TO PROVIDE OVERCURRENT PROTECTION FOR THE FESTOON OUTLET ON THE DECORATIVE LIGHT POLES. THE CONTRACTOR SHALL WIRE THE DECORATIVE LIGHTING POLES AS OUTLINED IN THE POLE BASE WIRING DIAGRAM SHOWN ON SHEET 14.

PAYMENT FOR THIS ITEM SHALL BE MADE AT THE UNIT PRICE BID PER EACH COMPLETE AND IN PLACE, ALL CONNECTIONS TESTED AND ACCEPTED.

ITEM 625, CONDUIT, 4", JACKED OR DRILLED, 725,051 (SCH 80), AS PER PLAN

IN ADDITION TO THE CMS SPECIFICATIONS FOR ITEM 625, THE CONDUIT SHALL BE SCHEDULE 80.

PAYMENT FOR THIS ITEM SHALL BE MADE AT THE UNIT PRICE BID PER FOOT COMPLETE AND IN PLACE, ALL CONNECTIONS TESTED AND ACCEPTED.



0 5 10 20
HORIZONTAL
SCALE IN FEET



CALCULATED
LMO
CHECKED
SDS

MATCH LINE - STA. 248+00
LIGHTING PLAN SHEET
STA. 245+00 TO STA. 248+00

LIC-S.R. 37-4.64
(STREETSCAPE)

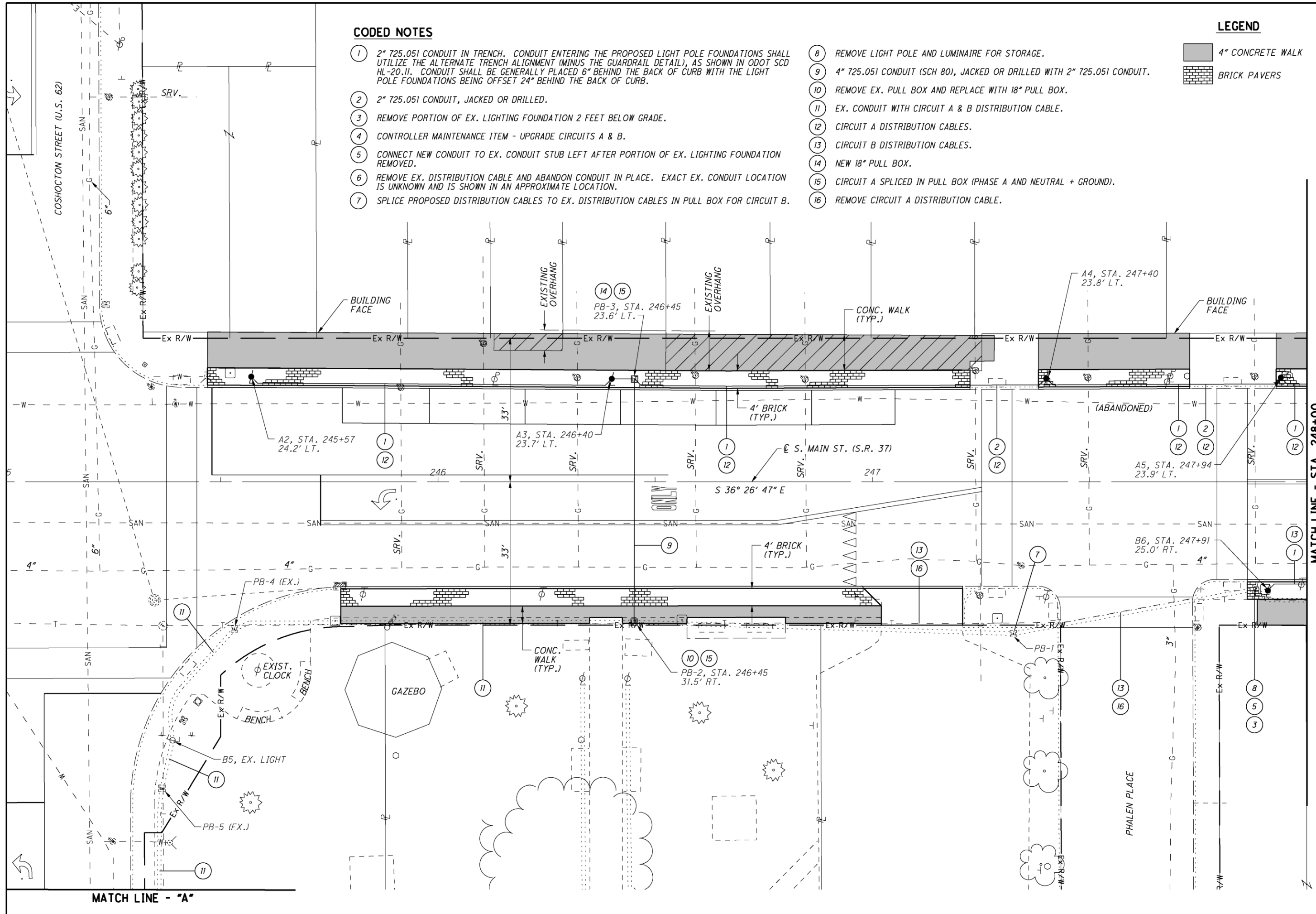
12
15

LEGEND



-  4" CONCRETE WALK
-  BRICK PAVERS

CODED NOTES

- 1 2" 725.051 CONDUIT IN TRENCH. CONDUIT ENTERING THE PROPOSED LIGHT POLE FOUNDATIONS SHALL UTILIZE THE ALTERNATE TRENCH ALIGNMENT (MINUS THE GUARDRAIL DETAIL), AS SHOWN IN ODOT SCD HL-20.11. CONDUIT SHALL BE GENERALLY PLACED 6" BEHIND THE BACK OF CURB WITH THE LIGHT POLE FOUNDATIONS BEING OFFSET 24" BEHIND THE BACK OF CURB.
- 2 2" 725.051 CONDUIT, JACKED OR DRILLED.
- 3 REMOVE PORTION OF EX. LIGHTING FOUNDATION 2 FEET BELOW GRADE.
- 4 CONTROLLER MAINTENANCE ITEM - UPGRADE CIRCUITS A & B.
- 5 CONNECT NEW CONDUIT TO EX. CONDUIT STUB LEFT AFTER PORTION OF EX. LIGHTING FOUNDATION REMOVED.
- 6 REMOVE EX. DISTRIBUTION CABLE AND ABANDON CONDUIT IN PLACE. EXACT EX. CONDUIT LOCATION IS UNKNOWN AND IS SHOWN IN AN APPROXIMATE LOCATION.
- 7 SPLICE PROPOSED DISTRIBUTION CABLES TO EX. DISTRIBUTION CABLES IN PULL BOX FOR CIRCUIT B.
- 8 REMOVE LIGHT POLE AND LUMINAIRE FOR STORAGE.
- 9 4" 725.051 CONDUIT (SCH 80), JACKED OR DRILLED WITH 2" 725.051 CONDUIT.
- 10 REMOVE EX. PULL BOX AND REPLACE WITH 18" PULL BOX.
- 11 EX. CONDUIT WITH CIRCUIT A & B DISTRIBUTION CABLE.
- 12 CIRCUIT A DISTRIBUTION CABLES.
- 13 CIRCUIT B DISTRIBUTION CABLES.
- 14 NEW 18" PULL BOX.
- 15 CIRCUIT A SPLICED IN PULL BOX (PHASE A AND NEUTRAL + GROUND).
- 16 REMOVE CIRCUIT A DISTRIBUTION CABLE.

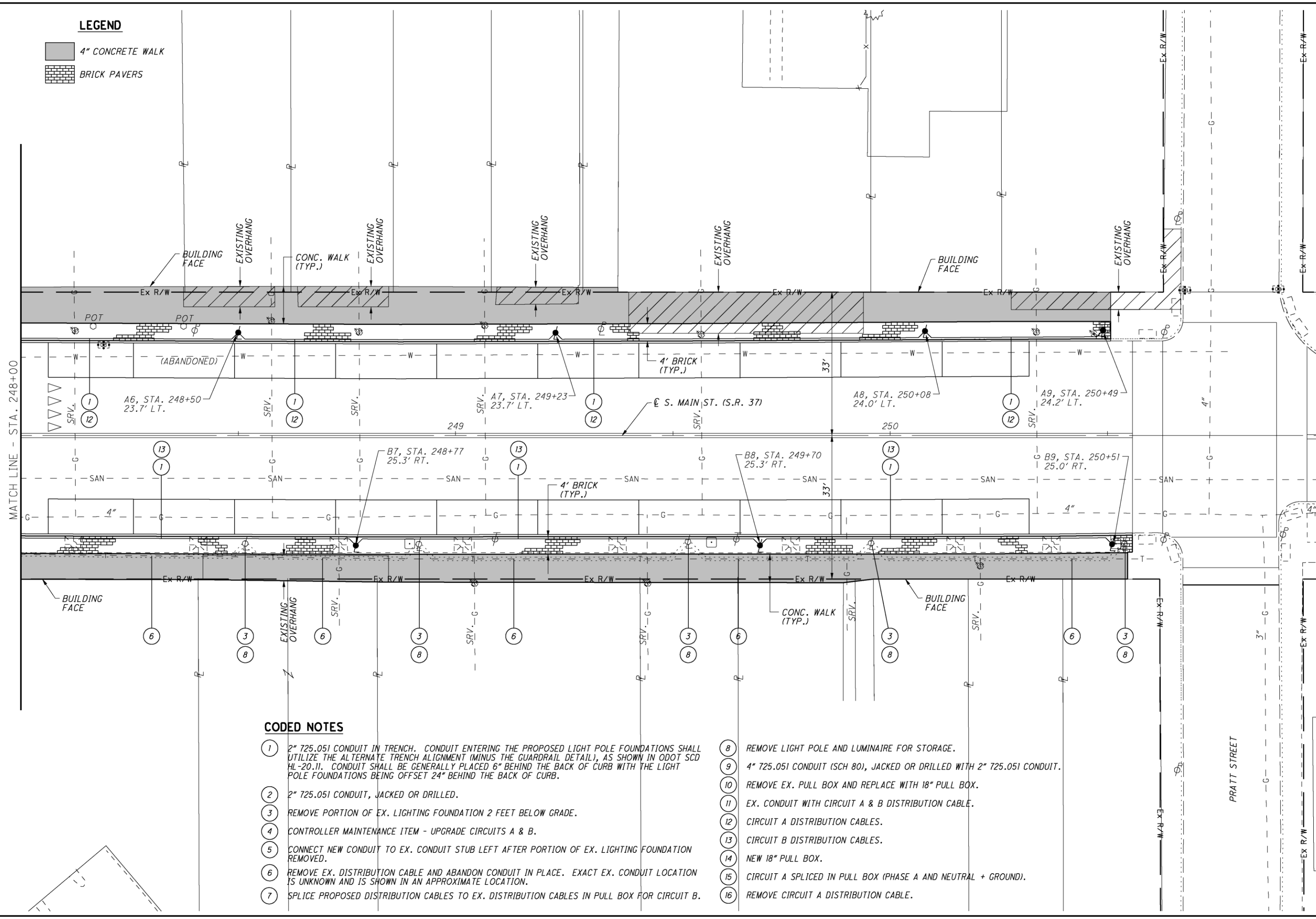


LEGEND

-  4" CONCRETE WALK
-  BRICK PAVERS

CALCULATED LAM CHECKED KJG

0 5 10 20
HORIZONTAL SCALE IN FEET



CODED NOTES

- 1 2" 725.051 CONDUIT IN TRENCH. CONDUIT ENTERING THE PROPOSED LIGHT POLE FOUNDATIONS SHALL UTILIZE THE ALTERNATE TRENCH ALIGNMENT (MINUS THE GUARDRAIL DETAIL), AS SHOWN IN ODOT SCD HL-20.11. CONDUIT SHALL BE GENERALLY PLACED 6" BEHIND THE BACK OF CURB WITH THE LIGHT POLE FOUNDATIONS BEING OFFSET 24" BEHIND THE BACK OF CURB.
- 2 2" 725.051 CONDUIT, JACKED OR DRILLED.
- 3 REMOVE PORTION OF EX. LIGHTING FOUNDATION 2 FEET BELOW GRADE.
- 4 CONTROLLER MAINTENANCE ITEM - UPGRADE CIRCUITS A & B.
- 5 CONNECT NEW CONDUIT TO EX. CONDUIT STUB LEFT AFTER PORTION OF EX. LIGHTING FOUNDATION REMOVED.
- 6 REMOVE EX. DISTRIBUTION CABLE AND ABANDON CONDUIT IN PLACE. EXACT EX. CONDUIT LOCATION IS UNKNOWN AND IS SHOWN IN AN APPROXIMATE LOCATION.
- 7 SPLICE PROPOSED DISTRIBUTION CABLES TO EX. DISTRIBUTION CABLES IN PULL BOX FOR CIRCUIT B.
- 8 REMOVE LIGHT POLE AND LUMINAIRE FOR STORAGE.
- 9 4" 725.051 CONDUIT (SCH 80), JACKED OR DRILLED WITH 2" 725.051 CONDUIT.
- 10 REMOVE EX. PULL BOX AND REPLACE WITH 18" PULL BOX.
- 11 EX. CONDUIT WITH CIRCUIT A & B DISTRIBUTION CABLE.
- 12 CIRCUIT A DISTRIBUTION CABLES.
- 13 CIRCUIT B DISTRIBUTION CABLES.
- 14 NEW 18" PULL BOX.
- 15 CIRCUIT A SPLICED IN PULL BOX (PHASE A AND NEUTRAL + GROUND).
- 16 REMOVE CIRCUIT A DISTRIBUTION CABLE.

LIGHTING PLAN SHEET
STA. 248+00 TO STA. 251+00

LIC-S.R. 37-4.64
(STREETSCAPE)

13
15

