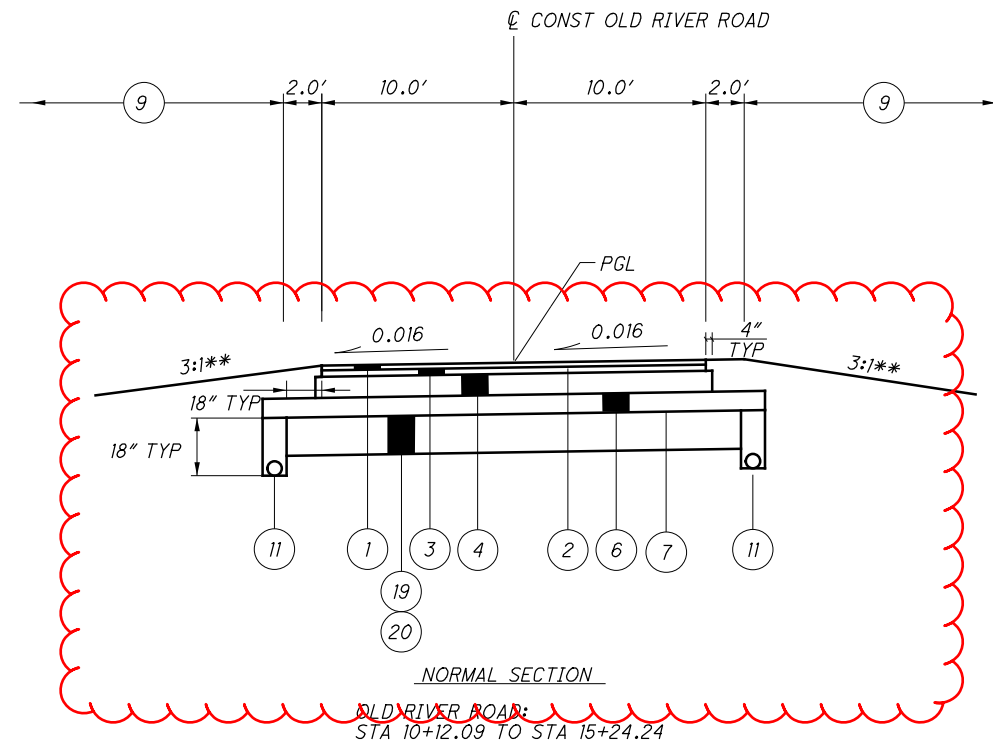
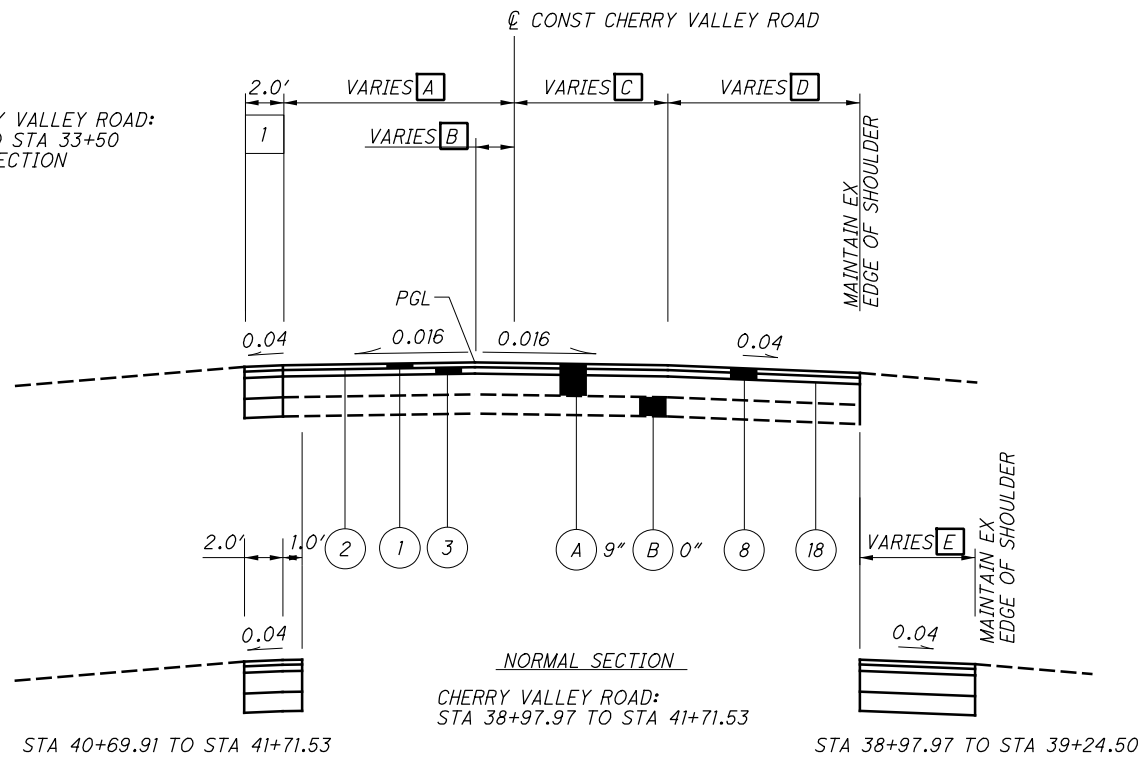


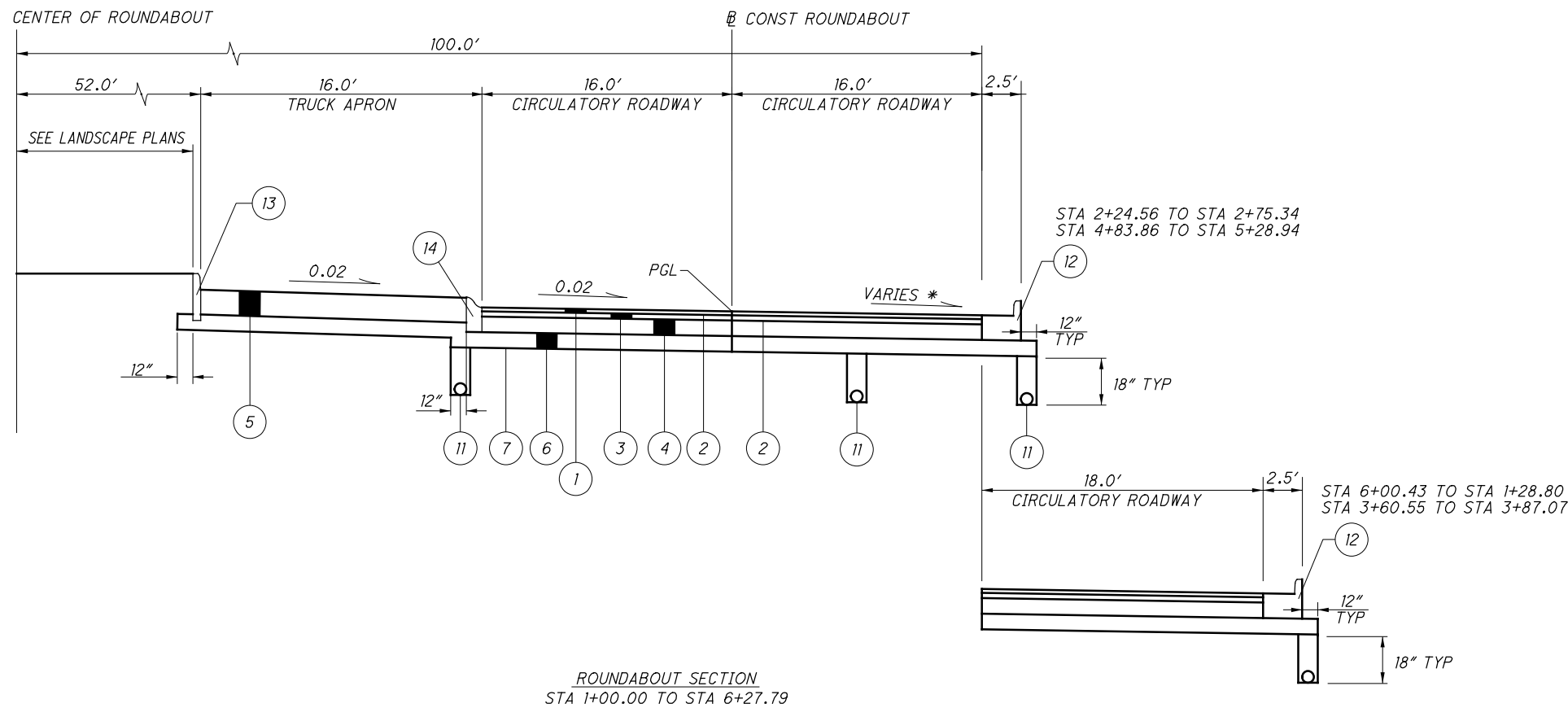
pw:\gnet-pw-bentley.com:gnet-pw-01\Document\Project\87642\roadway\sheet\87642-GY001.dgn 2/13/2023 11:01:43 AM pkeiff

I REFER TO CHERRY VALLEY ROAD:
 STA 28+55.02 TO STA 33+50
 FOR PAVEMENT SECTION



OLD RIVER ROAD
 FOR STA 14+20.33 TO STA 15+24.24
 SEE INTERSECTION DETAIL ON SHEET 167

- A 16.0' FROM STA. 38+97.97 TO STA. 39+93.73
 TAPERS FROM 16.0' @ STA. 39+93.73 TO 10.5' @ STA. 41+31.23
 10.5' FROM STA. 41+31.23 TO STA. 41+64
- B 5.0' FROM STA. 38+93.51 TO STA. 39+93.51
 TAPERS FROM 5.0' @ STA. 39+93.51 TO 0.0' @ STA. 41+18.51
- C TAPERS FROM 13.79' @ STA. 38+97.97 TO 6.0' @ STA. 39+28.83
 6.0' FROM STA. 39+28.83 TO STA. 39+93.29
 TAPERS FROM 6.0' @ STA. 39+93.29 TO 11.5' @ STA. 41+30.79
 11.5' FROM STA. 41+30.79 TO STA. 41+64
- D TAPERS FROM 4.21' @ STA. 38+97.97 TO 11.82' @ STA. 39+24.50
 TAPERS FROM 14.19' @ STA. 39+24.50 TO 13.61' @ STA. 39+44.86
 TAPERS FROM 13.61' @ STA. 39+44.86 TO 13.39' @ STA. 39+94.66
 TAPERS FROM 13.39' @ STA. 39+94.66 TO 7.41' @ STA. 40+45.87
 TAPERS FROM 7.41' @ STA. 40+45.87 TO 5.33' @ STA. 40+97.65
 TAPERS FROM 5.33' @ STA. 40+97.65 TO 2.88' @ STA. 41+35.99
 TAPERS FROM 2.88' @ STA. 41+35.99 TO 2.82' @ STA. 41+64
- E TAPERS FROM 13.0' @ STA. 38+97.97 TO 2.37' @ STA. 39+24.50



* SEE ROUNDABOUT DETAILS ON SHEETS 169 TO 174

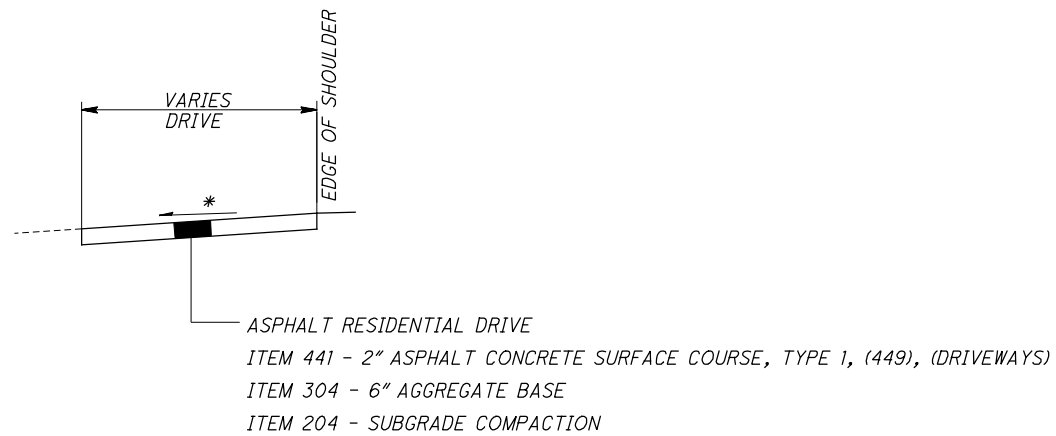
** SEE CROSS SECTIONS FOR GRADING. ALL PROPOSED DITCH WIDTHS SHALL BE 2 FEET WIDE UNLESS STATED OTHERWISE IN THE PLANS.

FOR PROPOSED PAVEMENT LEGEND, SEE SHEET 6

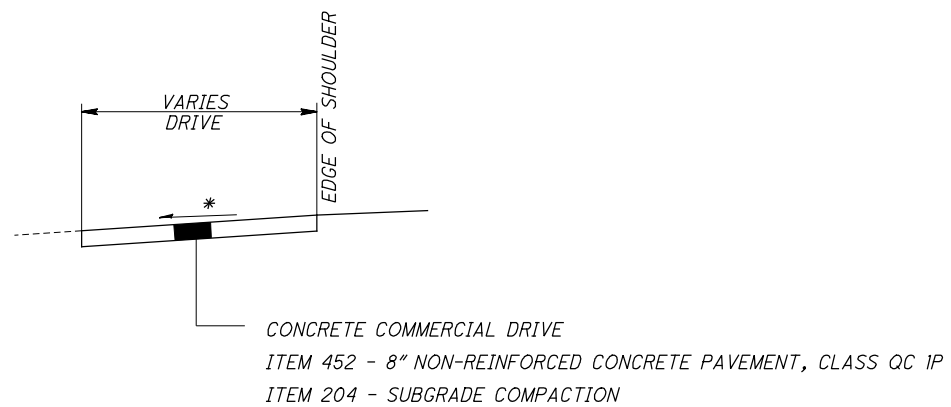
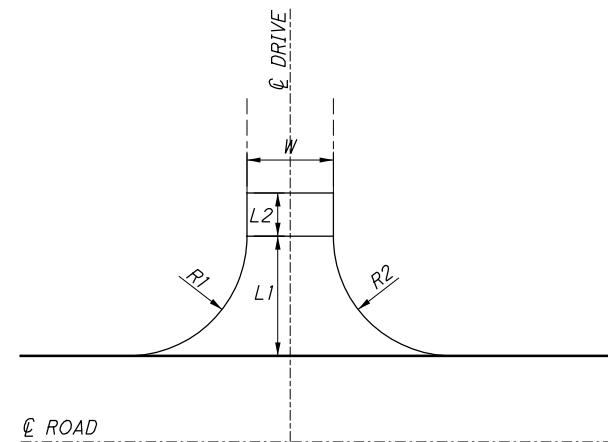
TYPICAL SECTIONS

LIC-THORNWOOD CROSSING

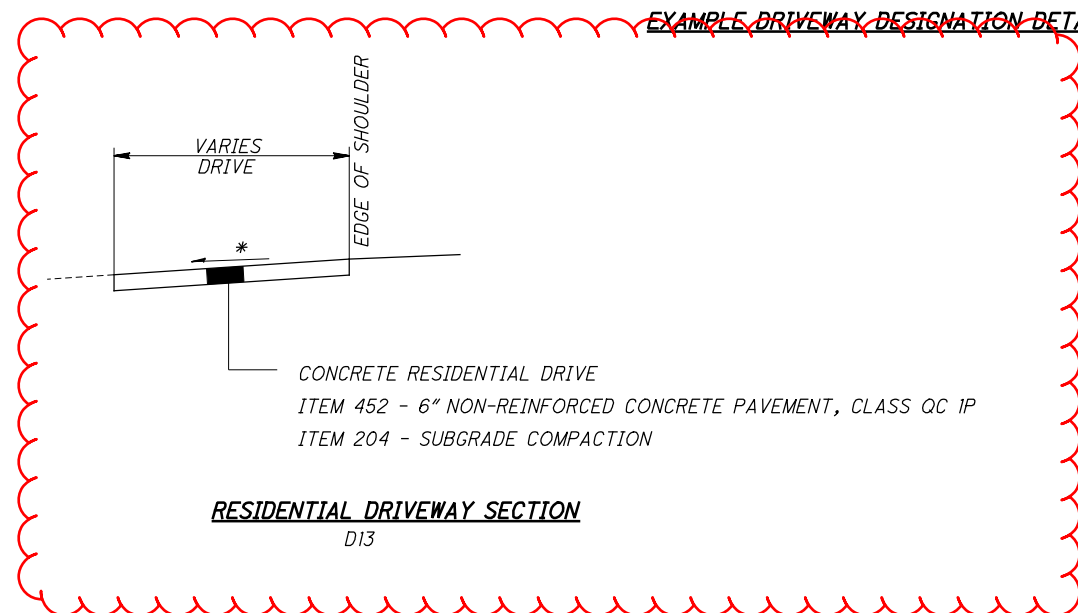
pw:\gfn\pw-bentley.com:gfn\pw-0\Document\Project\87642\roadway\sheet\87642_GY001.dgn 2/13/2023 11:06:51 AM pkeiffer



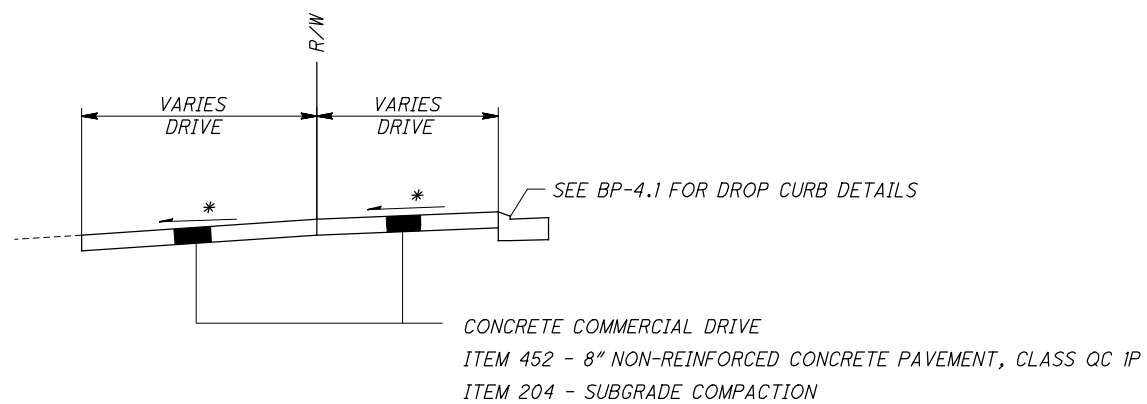
RESIDENTIAL DRIVEWAY SECTION
D2, D3, D4, D5, D6, D7, D9, D10, D12, D14, D15



COMMERCIAL DRIVEWAY SECTION
D8, D11



RESIDENTIAL DRIVEWAY SECTION
D13

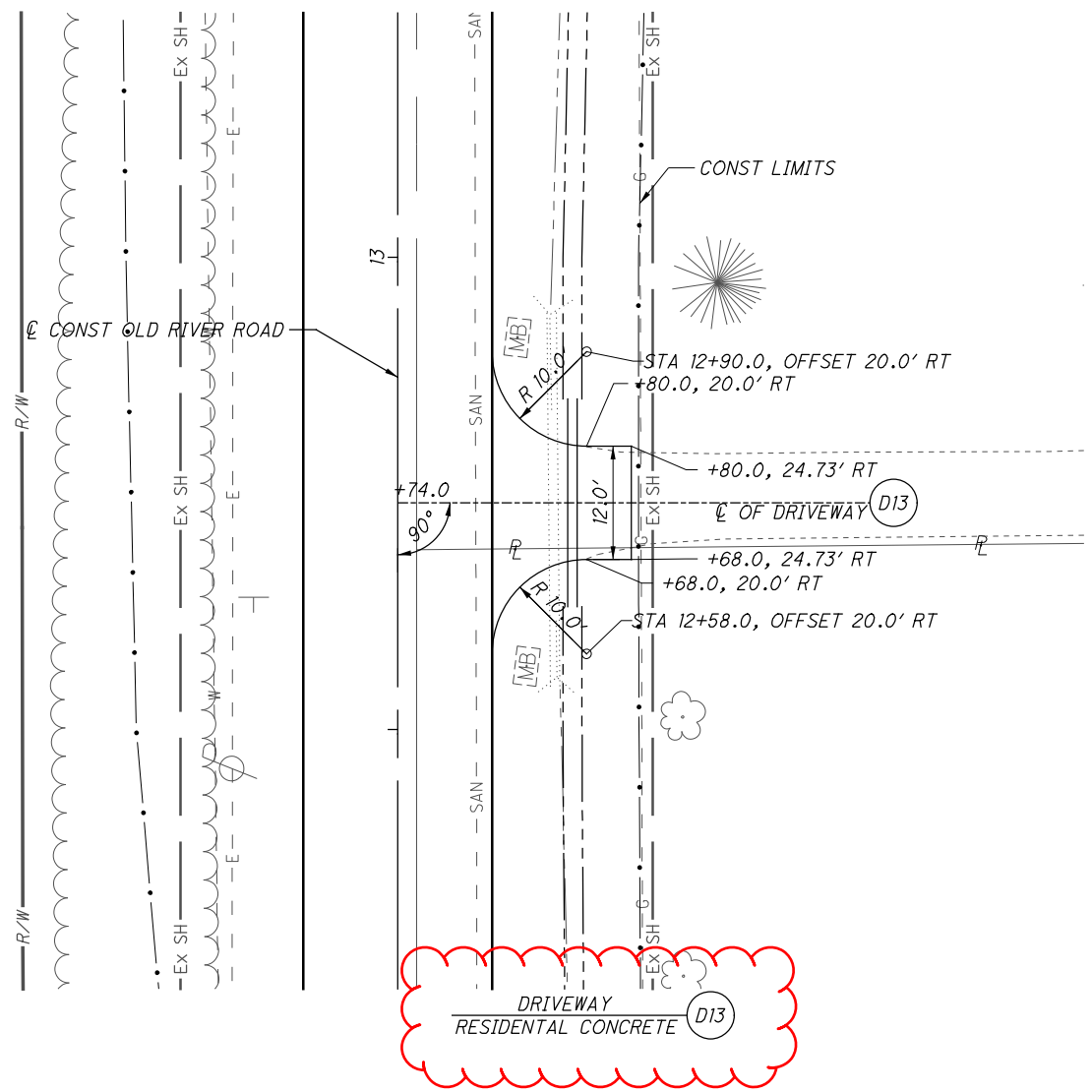


COMMERCIAL DRIVEWAY SECTION
D1

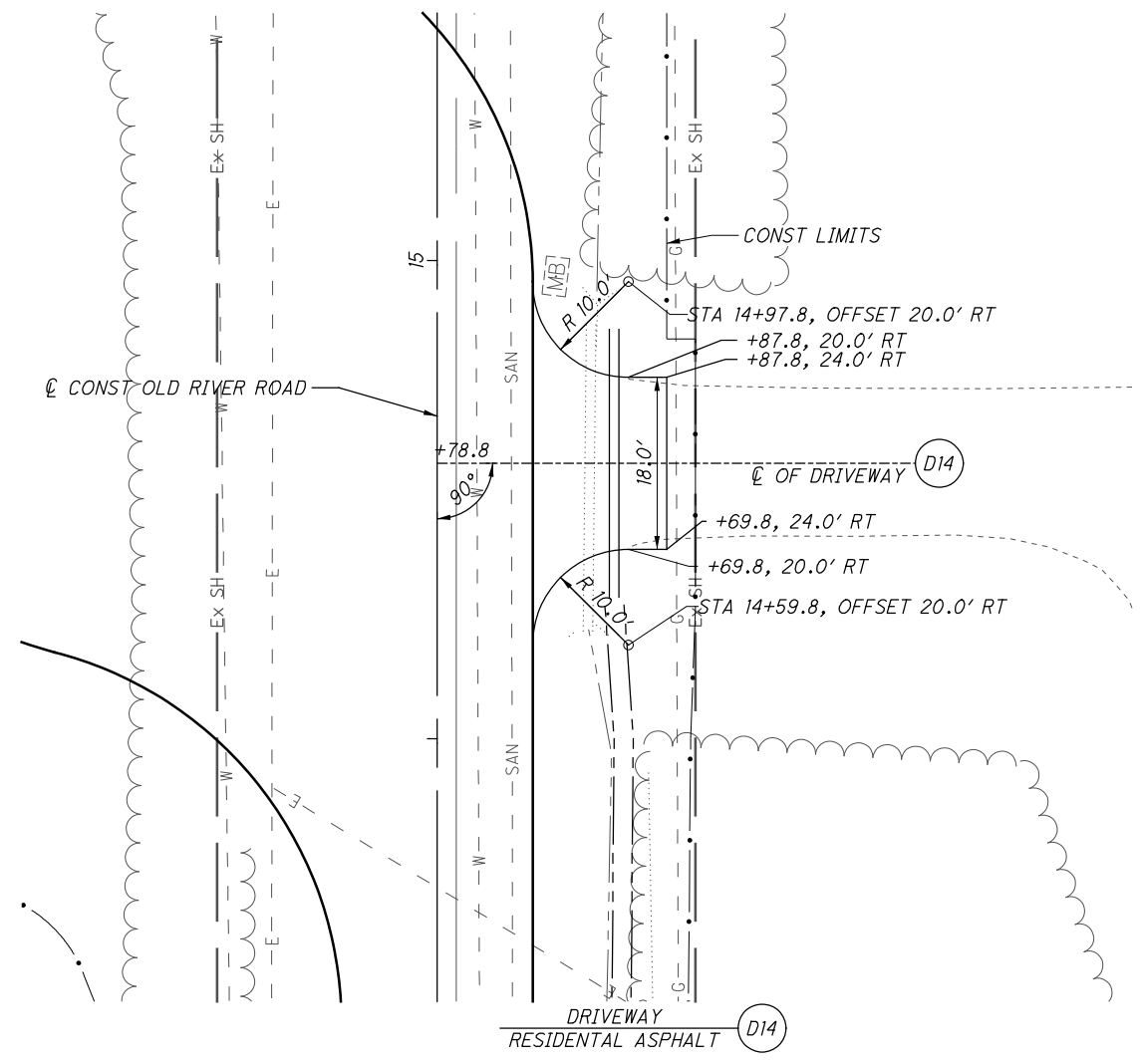
* SEE SHEETS 177 TO 183 FOR DRIVE PROFILES

FOR PROPOSED PAVEMENT LEGEND, SEE SHEET 6

pw:\gfn\p-w.bentley.com\gfn\p-w-01\Documents\Projects\58677\87642\roadway\sheets\87642_GD006.dgn 2/13/2023 11:23:35 AM pkeifer

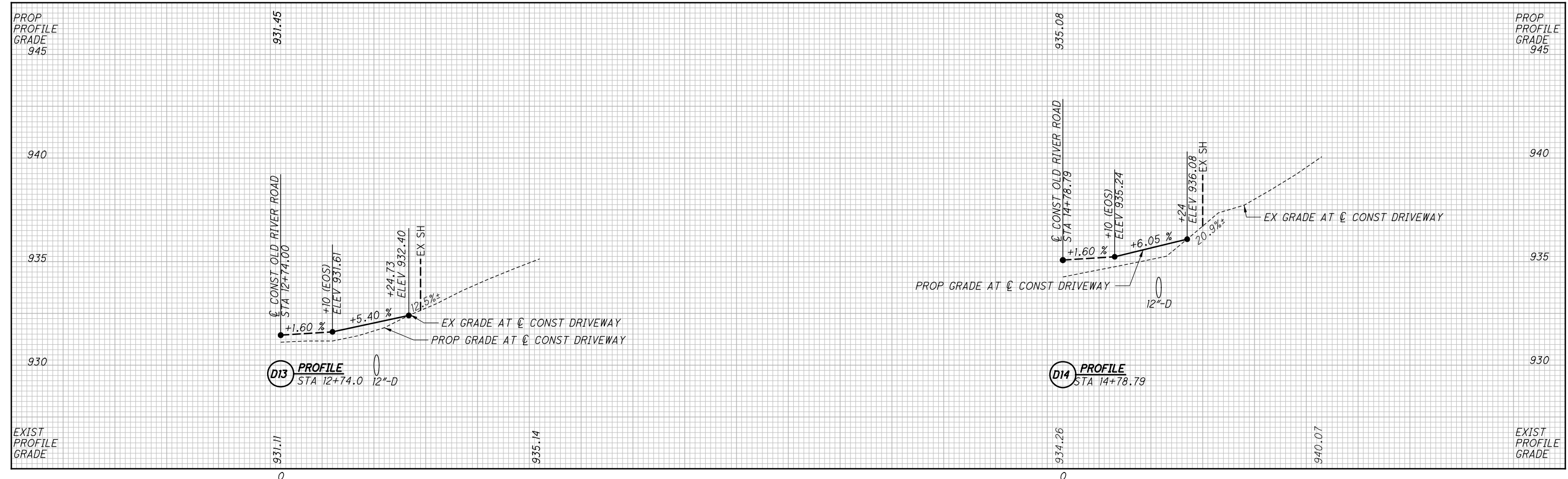


DRIVEWAY D13
RESIDENTIAL CONCRETE



DRIVEWAY D14
RESIDENTIAL ASPHALT

FOR DRIVEWAY PAVEMENT SECTION SEE SHEET 176



DRIVE DETAILS - OLD RIVER ROAD
STA 12+74.00 RT, 14+78.79 RT

LIC-THORNWOOD CROSSING

183
381

SCALE IN FEET
HORIZONTAL
1" = 20'

CALCULATED
TOD
CHECKED
PEK