

SCHMATIC PLAN

FHWA REGION	STATE	PROJECT
5	OHIO	

LIC-37-15.61
LIC-16-14.26

CALC. BY C. J. [Signature]
DATE 1-3-87
CHECK BY [Signature]
DATE 1-18-87

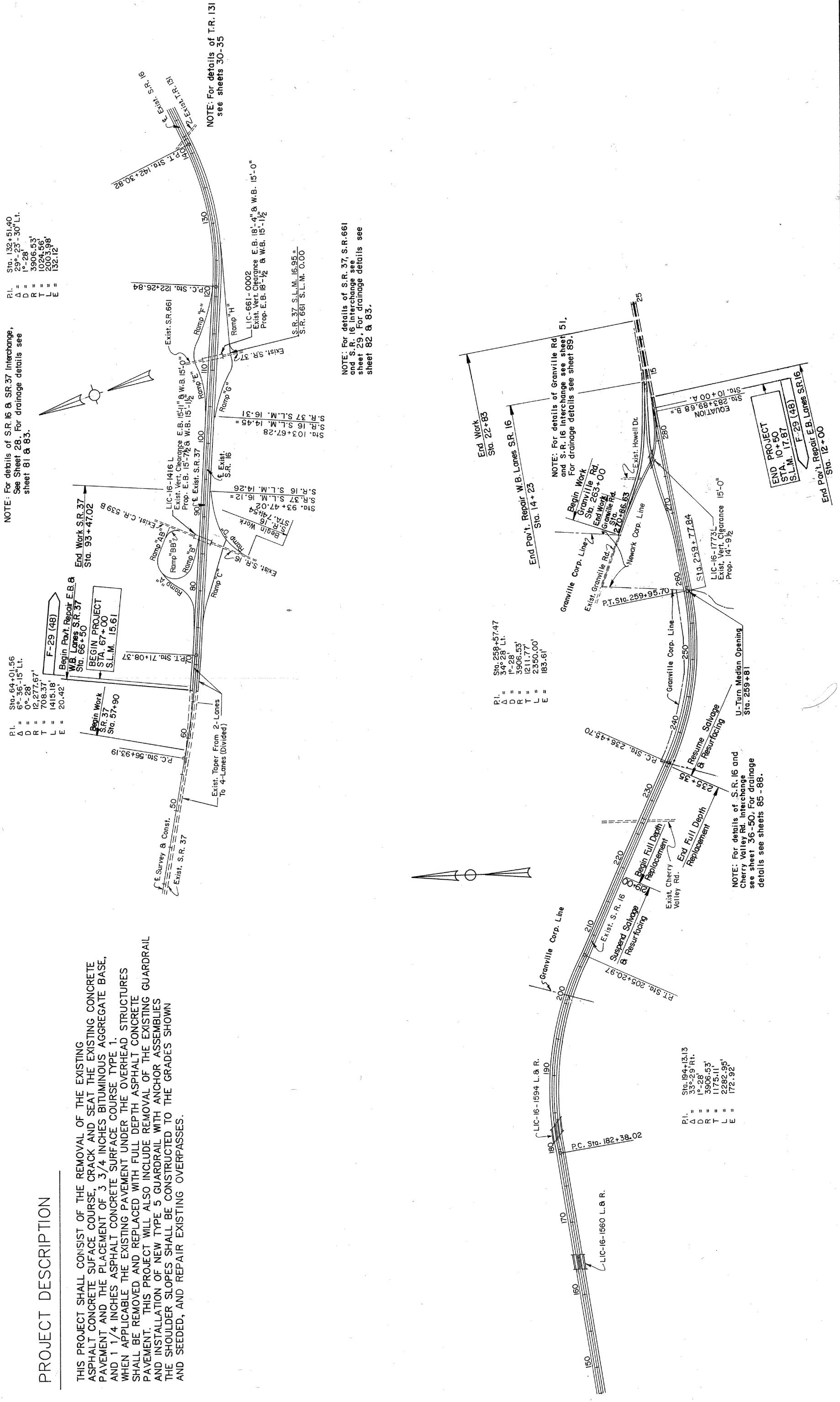
P.I. Sta. 132+51.40
Δ = 2.9° 23' - 30" Lt.
D = 1'-28"
R = 3906.53'
T = 1024.56'
L = 200.998'
E = 132.12'

NOTE: For details of S.R. 16 & S.R. 37 interchange, see Sheet 28. For drainage details see sheet 81 & 83.

P.I. Sta. 64+01.56
Δ = 6° 36' - 15" Lt.
D = 0'-28"
R = 12,277.67'
T = 708.37'
L = 1415.18'
E = 20.42'

PROJECT DESCRIPTION

THIS PROJECT SHALL CONSIST OF THE REMOVAL OF THE EXISTING ASPHALT CONCRETE SURFACE COURSE, CRACK AND SEAT THE EXISTING CONCRETE PAVEMENT AND THE PLACEMENT OF 3 3/4 INCHES BITUMINOUS AGGREGATE BASE, AND 1 1/4 INCHES ASPHALT CONCRETE SURFACE COURSE TYPE 1. WHEN APPLICABLE THE EXISTING PAVEMENT UNDER THE OVERHEAD STRUCTURES SHALL BE REMOVED AND REPLACED WITH FULL DEPTH ASPHALT CONCRETE PAVEMENT. THIS PROJECT WILL ALSO INCLUDE REMOVAL OF THE EXISTING GUARDRAIL AND INSTALLATION OF NEW TYPE 5 GUARDRAIL WITH ANCHOR ASSEMBLIES THE SHOULDER SLOPES SHALL BE CONSTRUCTED TO THE GRADES SHOWN AND SEEDED, AND REPAIR EXISTING OVERPASSES.



NOTE: For details of T.R. 131 see sheets 30-35

NOTE: For details of S.R. 37, S.R. 661 and S.R. 16 interchange see sheet 29. For drainage details see sheet 82 & 83.

NOTE: For details of Granville Rd and S.R. 16 interchange see sheet 51. For drainage details see sheet 89.

NOTE: For details of S.R. 16 and Cherry Valley Rd. interchange see sheet 36-50. For drainage details see sheets 85-88.