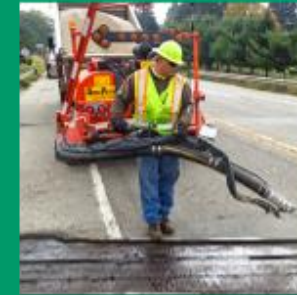


MOTEC

OCTOBER 17, 2022



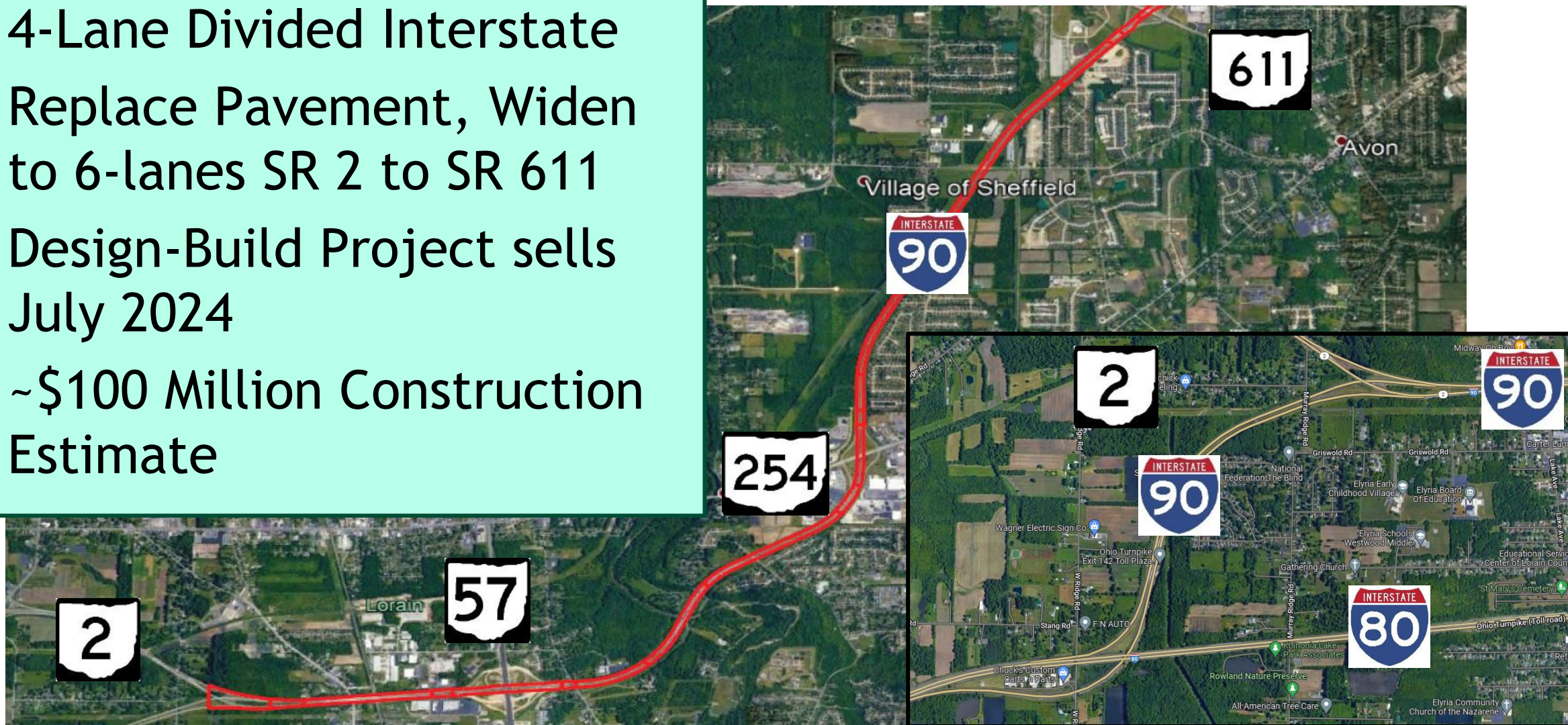
OHIO DEPARTMENT OF
TRANSPORTATION

LOR-90-10.76
PID 107714

Scott Ockunzzi
District 3

PROJECT OVERVIEW

- 4-Lane Divided Interstate
- Replace Pavement, Widen to 6-lanes SR 2 to SR 611
- Design-Build Project sells July 2024
- ~\$100 Million Construction Estimate



PROJECT OVERVIEW

SR 2 Interchange - Existing

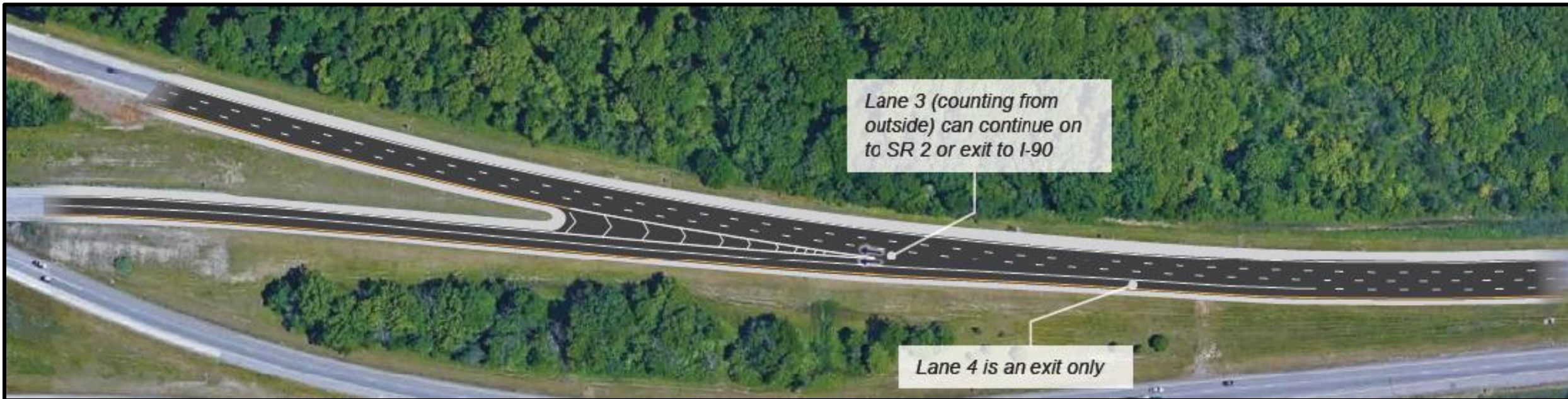
- 2 lanes in each direction
- Westbound exit left lane option
- Eastbound entrance merge lane



PROJECT OVERVIEW

SR 2 Interchange - Proposed

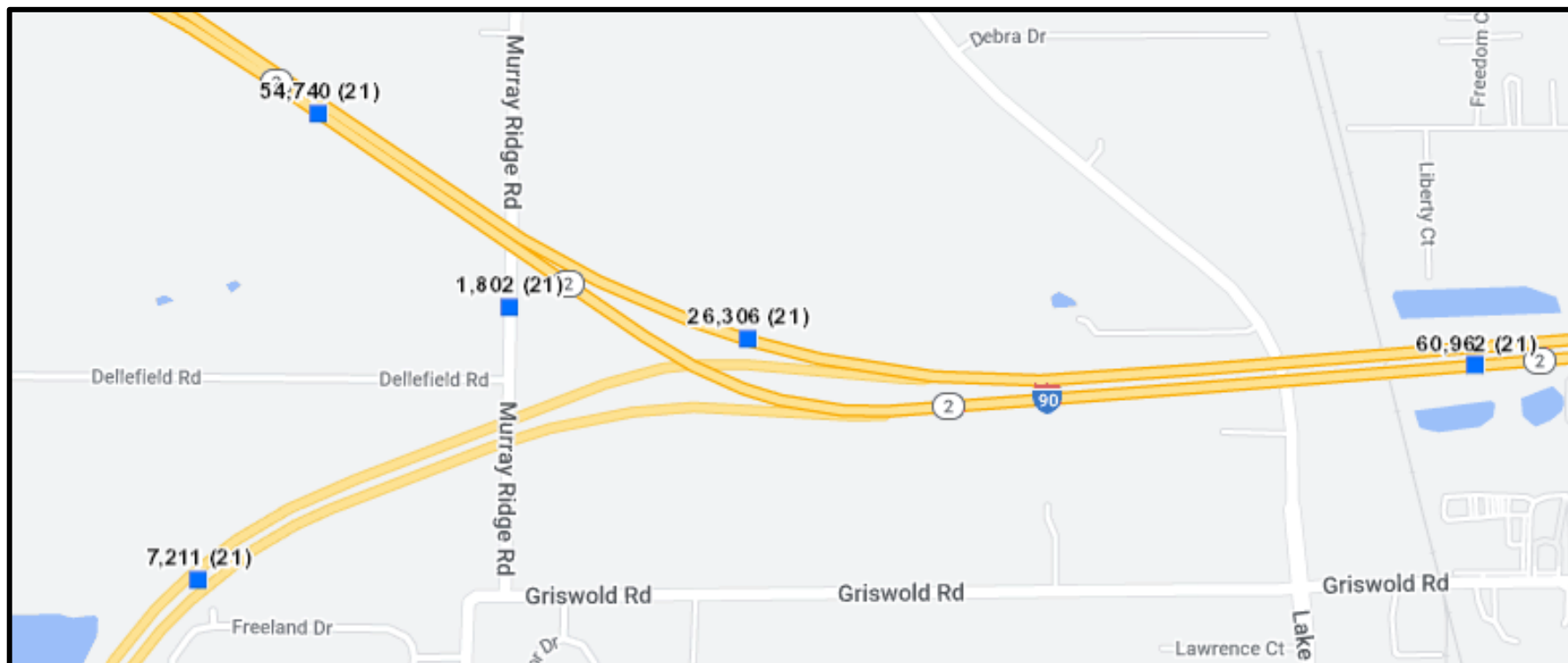
- 3 lanes on IR 90, 2 lanes on SR 2
- Westbound 4th lane exit only, 3rd lane option
- Eastbound entrance add lane



PROJECT OVERVIEW

SR 2 Interchange Traffic

- 2021 AADT: IR 90 (61,000) = SR 2 (54,000) + OTC Conn. (7,000)
- Westbound IR 90 to Turnpike Connector: 3,800



MAINTENANCE OF TRAFFIC

MOT Scope Requirements

- Two lanes each direction
- Maintain drop-offs with portable barrier
- Mainline bridges already widened
- Part-width ramp construction

Ratio of Lanes	2:1		Traffic Volume per open lane			
	Summer Weekday	Summer Weekend	Spring/Fall Weekday	Spring/Fall Weekend	Winter Weekday	Winter Weekend
Hour of the Day	MON-FRI	SAT-SUN	MON-FRI	SAT-SUN	MON-FRI	SAT-SUN
0-1AM	319	508	240	366	217	312
1-2AM	181	284	176	219	159	187
2-3AM	156	162	139	164	125	139
3-4AM	166	146	156	132	141	113
4-5AM	311	175	271	149	245	127
5-6AM	804	335	774	300	699	256
6-7AM	* 1819	593	* 1706	504	* 1539	430
7-8AM	* 2305	797	* 2384	775	* 2151	661
8-9AM	* 1917	1143	* 1987	981	* 1792	836
9-10AM	* 1718	1476	* 1615	1329	1457	1133
10-11AM	* 1815	* 1736	* 1593	* 1548	1437	1320
11-12PM	* 1911	* 1812	* 1777	* 1743	* 1603	1486
12-1PM	* 2002	* 1847	* 1972	* 1917	* 1779	* 1634
1-2PM	* 2075	* 1774	* 2009	* 1947	* 1813	* 1660
2-3PM	* 2250	* 1849	* 2315	* 1977	* 2089	* 1685
3-4PM	* 2680	* 1866	* 2754	* 2009	* 2485	* 1713
4-5PM	* 2940	* 1917	* 3021	* 1995	* 2726	* 1701
5-6PM	* 2747	* 1827	* 2974	* 1866	* 2683	* 1591
6-7PM	* 2285	* 1615	* 2264	* 1764	* 2043	* 1504
7-8PM	* 1537	1304	1339	1339	1208	1142
8-9PM	1305	1174	1295	1118	1168	953
9-10PM	1115	1199	1045	1035	943	882
10-11PM	1002	1012	823	802	742	684
11-12AM	740	774	598	605	540	516

MAINTENANCE OF TRAFFIC

SR 2 Interchange

- Need to replace EB pavement under WB exit overpass
- Width under overpass is only 34' wide



MAINTENANCE OF TRAFFIC

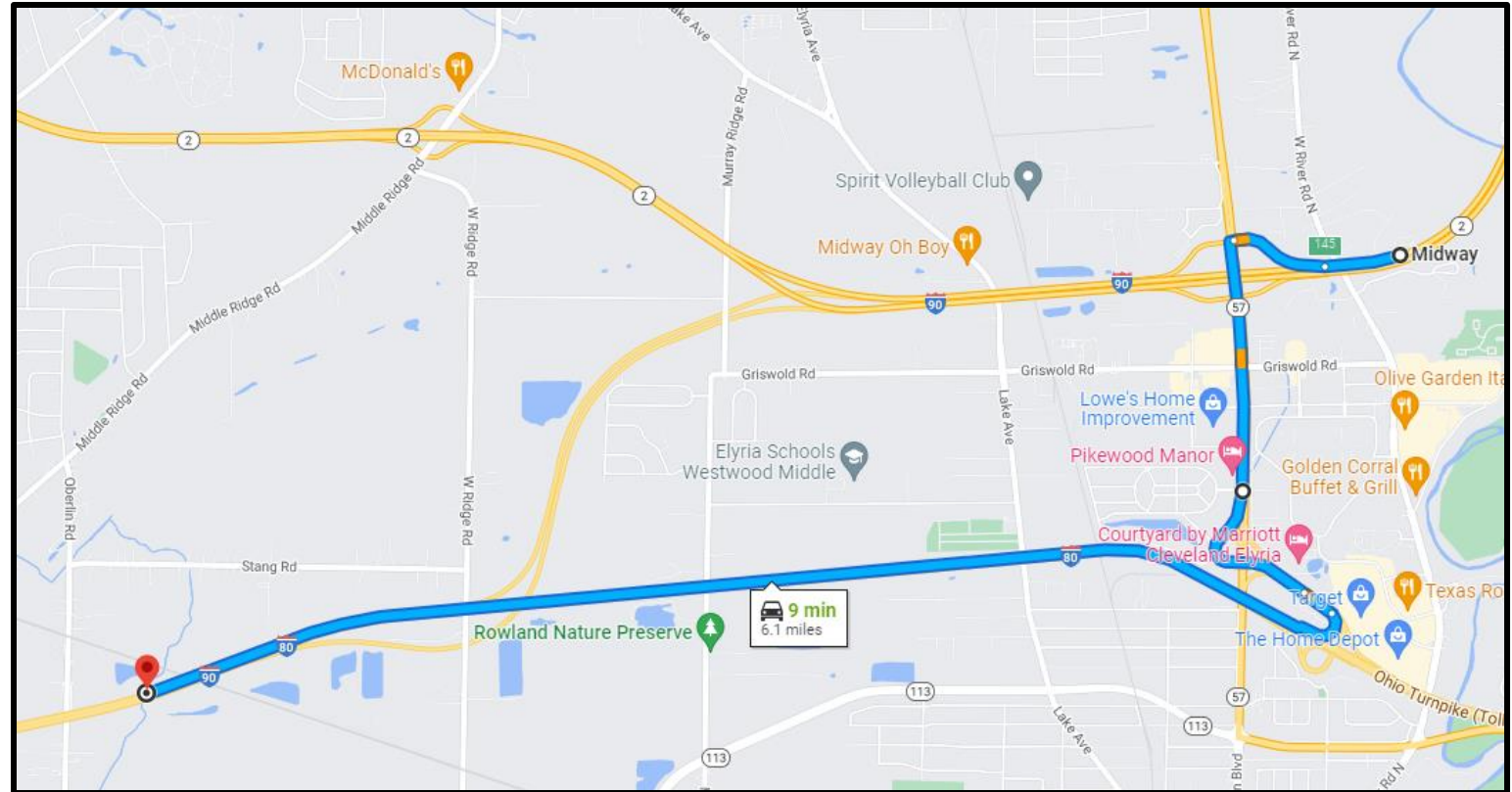
- Maintain 1 lane on SR 2 EB under IR 90 WB overpass
- If second EB lane is not maintained, projected queue 17 mi
- Second EB lane would have to be contra-flow
- Contra-flow would require closure of WB ramp to OTC



MAINTENANCE OF TRAFFIC

IR 90 OTC Detour

- Turnpike has agreed to a long-term detour
- Detour Route:
SR 57 SB to IR 80 WB
- Incentive/Disincentive
\$10,000/day
-70/+90 days
- Also sign SR 2 WB to
SR 58 SB



MOTEC CONSULTATION

Request Detour Approval

- Detour approved with disincentives
- Relatively short detour route
- Approved by Turnpike
- Allows for other work to be completed during closure
- If further mitigation required:
 - A+B Detour Disincentives
 - Incentive/Disincentive
 - Window Contract

QUESTIONS

