

ROUNDING

THE ROUNDING AT SLOPE BREAKPOINTS SHOWN ON THE TYPICAL SECTIONS APPLIES TO ALL CROSS-SECTIONS, EVEN THOUGH OTHERWISE SHOWN.

UTILITIES

LISTED BELOW ARE ALL UTILITIES LOCATED WITHIN THE PROJECT CONSTRUCTION LIMITS TOGETHER WITH THEIR RESPECTIVE OWNERS:

AT&T OHIO INDEPENDENTS FIBER NETWORK
130 N. ERIE ST, RM 714 13888 COUNTY RD 25A
TOLEDO, OH 44883 WAPAKONETA, OH 45895
419-245-7304 419-739-3114

BUCKEYE BROADBAND LEVEL 3 COMMUNICATIONS
2700 OREGON RD. 1025 ELDORADO BLVD.
NORTHWOOD, OH 43619 BROOMFIELD, CO 80021
ATTN: MICHAEL SHEAHAN 512-742-1428
419-724-3713

BUCKEYE PIPE LINE COMPANY SUNOCO LOGISTICS
P.O. BOX 368 7155 INKSTER ROAD
EMMAUS, PA 18049-0368 TAYLOR, MI 48180
484-232-4000 313-670-1251

CITY OF TOLEDO - TOLEDO EDISON (USIC)
DIVISION OF WATER 6099 ANGOLA RD.
401 SOUTH ERIE STREET HOLLAND, OH 43528
TOLEDO, OH 43602 419-249-5218
419-936-2839

COLUMBIA GAS OF OHIO - MARATHON ASHLAND PIPE LINE
TOLEDO COMPANY
2901 E. MANHATTAN BLVD. 539 S. MAIN STREET
TOLEDO, OH 43611 FINDLAY, OH 45840
419-539-6066 419-422-2121

ENBRIDGE ENERGY LUCAS COUNTY ENGINEER'S OFFICE
1409 HAMMOND AVE. 1 GOVERNMENT CENTER, SUITE 870
SUPERIOR, WI 54880 TOLEDO, OH 43604-2259
715-398-4500 419-213-4541 X4359

GAS RECOVERY SYSTEMS LUCAS COUNTY SANITARY
10611 5 MILE RD. ENGINEERS
NORTHVILLE, MI 48168 1111 SOUTH McCORD RD.
248-305-7774 HOLLAND, OH 43528
419-213-2926

CITY OF TOLEDO
DIVISION OF ENGINEERING SERVICES
600 JEFFERSON AVE. SUITE 300
TOLEDO, OHIO 43604
419-245-1315

CITY OF TOLEDO
DIVISION OF TRANSPORTATION
110 N. WESTWOOD
TOLEDO, OHIO 43607
419-245-1300

CONSTRUCTION NOISE

ACTIVITIES AND LAND USE ADJACENT TO THIS PROJECT MAY BE AFFECTED BY CONSTRUCTION NOISE. IN ORDER TO MINIMIZE ANY ADVERSE CONSTRUCTION NOISE IMPACTS, DO NOT OPERATE POWER-OPERATED CONSTRUCTION-TYPE DEVICES BETWEEN THE HOURS OF 9:00 PM AND 7:00 AM. IN ADDITION, DO NOT OPERATE AT ANY TIME ANY DEVICE IN SUCH A MANNER THAT THE NOISE CREATED SUBSTANTIALLY EXCEEDS THE NOISE CUSTOMARILY AND NECESSARILY ATTENDANT TO THE REASONABLE AND EFFICIENT PERFORMANCE OF SUCH EQUIPMENT. CONTRACTOR WILL NEED TO APPLY FOR A NOISE WAIVER FROM CITY OF TOLEDO.

SURVEYING PARAMETERS

PRIMARY PROJECT CONTROL MONUMENTS GOVERN ALL POSITIONING ON ODOT PROJECTS. SEE SHEET 2 OF THE PLANS FOR A TABLE CONTAINING PROJECT CONTROL INFORMATION.

USE THE FOLLOWING PROJECT CONTROL, VERTICAL POSITIONING, AND HORIZONTAL POSITIONING PARAMETERS FOR ALL SURVEYING:

PROJECT CONTROL

POSITIONING METHOD: ODOT VRS

VERTICAL POSITIONING

ORTHOMETRIC HEIGHT DATUM: NAVD 88
GEOID: 12A

HORIZONTAL POSITIONING

REFERENCE FRAME: NAD 83 (2011)
ELLIPSOID: GRS 80
MAP PROJECTION: LAMBERT CONFORMAL CONIC
COORDINATE SYSTEM: OHIO STATE PLANE NORTH ZONE
COMBINED SCALE FACTOR: 1.0000000
ORIGIN OF COORDINATE SYSTEM: OHIO NORTH ZONE
NORTHING = 0.000
EASTING = 0.000

USE THE POSITIONING METHODS AND MONUMENT TYPE USED IN THE ORIGINAL SURVEY TO RESTORE ALL MONUMENTS RELATED TO PRIMARY PROJECT CONTROL THAT ARE DAMAGED OR DESTROYED BY CONSTRUCTION ACTIVITIES. RESTORE THE DAMAGED OR DESTROYED MONUMENTS IN ACCORDANCE WITH CMS 623.

UNITS ARE IN U.S. SURVEY FEET. USE THE FOLLOWING CONVERSION FACTOR: 1 METER = 3.280833333 U.S. SURVEY FEET.

WORK LIMITS

THE WORK LIMITS SHOWN ON THESE PLANS ARE FOR PHYSICAL CONSTRUCTION ONLY. PROVIDE THE INSTALLATION AND OPERATION OF ALL WORK ZONE TRAFFIC CONTROL AND WORK ZONE TRAFFIC CONTROL DEVICES REQUIRED BY THESE PLANS WHETHER INSIDE OR OUTSIDE THESE WORK LIMITS.

CLEARING AND GRUBBING

ALTHOUGH THERE ARE NO TREES OR STUMPS SPECIFICALLY MARKED FOR REMOVAL WITHIN THE LIMITS OF THE PROJECT, A LUMP SUM QUANTITY IS INCLUDED IN THE GENERAL SUMMARY FOR ITEM 201, CLEARING AND GRUBBING. ALL PROVISIONS AS SET FORTH IN THE SPECIFICATIONS UNDER THIS ITEM ARE INCLUDED IN THE LUMP SUM PRICE BID FOR ITEM 201, CLEARING AND GRUBBING.

REVIEW OF DRAINAGE FACILITIES

BEFORE ANY WORK IS STARTED ON THE PROJECT AND AGAIN BEFORE FINAL ACCEPTANCE BY THE STATE, REPRESENTATIVES OF THE STATE AND THE CONTRACTOR, ALONG WITH LOCAL REPRESENTATIVES, SHALL MAKE AN INSPECTION OF ALL EXISTING SEWERS WHICH ARE TO REMAIN IN SERVICE AND WHICH MAY BE AFFECTED BY THE WORK. THE CONDITION OF THE EXISTING CONDUITS AND THEIR APPURTENANCE SHALL BE DETERMINED FROM FIELD OBSERVATIONS. RECORDS OF THE INSPECTION SHALL BE KEPT IN WRITING BY THE STATE.

ALL NEW CONDUITS, INLETS, CATCH BASINS, AND MANHOLES CONSTRUCTED AS A PART OF THE PROJECT SHALL BE FREE OF ALL FOREIGN MATTER AND IN A CLEAN CONDITION BEFORE THE PROJECT WILL BE ACCEPTED BY THE STATE.

ALL EXISTING SEWERS INSPECTED INITIALLY BY THE ABOVE MENTIONED PARTIES SHALL BE MAINTAINED AND LEFT IN A CONDITION REASONABLY COMPARABLE TO THAT DETERMINED BY THE ORIGINAL INSPECTION. ANY CHANGE IN THE CONDITION RESULTING FROM THE CONTRACTOR'S OPERATIONS SHALL BE CORRECTED BY THE CONTRACTOR TO THE SATISFACTION OF THE ENGINEER.

PAYMENT FOR ALL OPERATIONS DESCRIBED ABOVE SHALL BE INCLUDED IN THE CONTRACT PRICE FOR THE PERTINENT 611 CONDUIT ITEMS.

MANHOLES, CATCH BASINS AND INLETS REMOVED OR ABANDONED

ALL CASTINGS SHALL BE CAREFULLY REMOVED AND STORED WITHIN THE RIGHT OF WAY FOR SALVAGE BY STATE FORCES.

PAYMENT FOR ALL OF THE ABOVE SHALL BE INCLUDED IN THE CONTRACT PRICE FOR THE PERTINENT 202 ITEM.

ITEM SPECIAL - MISCELLANEOUS METAL

EXISTING CASTINGS MAY PROVE TO BE UNSUITABLE FOR REUSE, AS DETERMINED BY THE ENGINEER. IT SHALL BE THE CONTRACTOR'S RESPONSIBILITY TO PROVIDE THE CASTINGS OF THE REQUIRED TYPE, SIZE AND STRENGTH (HEAVY OR LIGHT DUTY) FOR THE PARTICULAR STRUCTURE IN QUESTION. ALL MATERIAL SHALL MEET ITEM 611 OF THE SPECIFICATIONS AND SHALL HAVE THE PRIOR APPROVAL OF THE ENGINEER.

THE FOLLOWING ESTIMATED QUANTITY HAS BEEN CARRIED TO THE GENERAL SUMMARY FOR USE AS DIRECTED BY THE ENGINEER.

SPECIAL, MISCELLANEOUS METAL 500 POUNDS

THE CONTRACTOR IS CAUTIONED TO USE EXTREME CARE IN THE REMOVAL, STORAGE AND REPLACEMENT OF ALL EXISTING CASTINGS. CASTINGS DAMAGED BY THE NEGLIGENCE OF THE CONTRACTOR, AS DETERMINED BY THE ENGINEER, SHALL BE REPLACED WITH THE PROPER NEW CASTINGS AT THE EXPENSE OF THE CONTRACTOR.

TEMPORARY DRAINAGE ITEMS

TEMPORARY DRAINAGE ITEMS LABELED ON THE MAINTENANCE OF TRAFFIC PLAN ARE ITEMIZED IN THE MOT GENERAL SUMMARY FOR INFORMATION ONLY AND INCLUDED IN ITEM 615 PAVEMENT FOR MAINTAINING TRAFFIC, LUMP SUM.

PART-WIDTH CONSTRUCTION

BECAUSE OF THE NECESSITY TO BUILD THIS PROJECT UNDER TRAFFIC AND TO CONSTRUCT THE FULL PAVEMENT WIDTH IN STAGES, EXERCISE CARE TO PREVENT THE CONSTRUCTION OF A BUTT JOINT IN THE BASE COURSES. LAP LONGITUDINAL JOINTS AS SHOWN ON STANDARD CONSTRUCTION DRAWING BP-3.1.

SEEDING AND MULCHING

THE FOLLOWING QUANTITIES ARE PROVIDED TO PROMOTE GROWTH AND CARE OF PERMANENT SEEDED AREAS:

659, SOIL ANALYSIS TEST	2 EACH
659, TOPSOIL	189 CU. YD.
659, SEEDING AND MULCHING - SEE SHEETS 52 AND 56	85 SQ. YD.
659, REPAIR SEEDING AND MULCHING	85 SQ. YD.
659, INTER-SEEDING	85 SQ. YD.
659, COMMERCIAL FERTILIZER	0.23 TON
659, LIME	0.04 ACRES
659, WATER	9 M. GAL.

SEEDING AND MULCHING SHALL BE APPLIED TO ALL AREAS OF EXPOSED SOIL BETWEEN THE RIGHT-OF-WAY LINES, AND WITHIN THE CONSTRUCTION LIMITS FOR AREAS OUTSIDE THE RIGHT-OF-WAY LINES COVERED BY WORK AGREEMENT OR SLOPE EASEMENT. QUANTITY CALCULATIONS FOR SEEDING AND MULCHING ARE BASED ON THESE LIMITS.

ITEM 690-98400 - SPECIAL - MISC.: WATER PERMIT FEES, FIXED LUMP SUM (\$7,650.00)

THIS ITEM OF WORK IS TO COMPENSATE THE CITY OF TOLEDO DIVISION OF WATER DISTRIBUTION FOR WATER PERMIT FEES FOR WORK ASSOCIATED WITH THIS PROJECT. THE WATER PERMIT FEES SHALL BE PAID BY THE CONTRACTOR PRIOR TO THE CITY COMMENCING WITH THE WORK. THE CONTRACTOR WILL NOT BE REQUIRED TO PERFORM ANY FIELD WORK ON THE PROJECT FOR THESE ITEMS.

QTY	UNIT	DESCRIPTION	UNIT FEE	TOTAL FEE
1	EACH	FIRE HYDRANT REMOVED	\$2,200.00	\$2,200.00
1	EACH	FIRE HYDRANT ADJUSTED TO GRADE	\$850.00	\$850.00
1	EACH	FIRE HYDRANT	\$4,600.00	\$4,600.00

CALCULATED
ARA
CHECKED
JMZ

GENERAL NOTES

LUC-184-8.92

U:\Account\OH\DOT\B001 - LUC 184 08 92\DESIGN\CT\ProjectData\01327\Design\Roadway\Sheets\01327_gn001.dgn 10/17/2021 7:23:11 AM C:\Program

REF NO.	SHEET NO.	STATION TO STATION		SIDE	601	605	605	611	611	611	611	611	611	611	611	611	611	611	WATER WORK				
					ROCK CHANNEL PROTECTION, TYPE C WITH FILTER CY	6" SHALLOW PIPE UNDERDRAINS FT	6" BASE PIPE UNDERDRAINS FT	6" CONDUIT, TYPE F, AS PER PLAN FT	12" CONDUIT, TYPE B, AS PER PLAN FT	12" CONDUIT, TYPE C, AS PER PLAN FT	60" CONDUIT, TYPE C, AS PER PLAN FT	CONDUIT, BORED OR JACKED, 12" FT	CATCH BASIN, NO. 3A EACH	CATCH BASIN, NO. 2-2B EACH	CATCH BASIN, NO. 6 EACH	MANHOLE, NO. 3 WITH 90" BASE I.D. AND 8" WEIR EACH	MANHOLE ADJUSTED TO GRADE, (SANITARY) EACH	MANHOLE RECONSTRUCTED TO GRADE, (SANITARY) EACH	PRECAST REINFORCED CONCRETE OUTLET EACH	6" FIRE HYDRANT, CITY OF TOLEDO EACH	FIRE HYDRANT REMOVED AND DISPOSED OF, CITY OF TOLEDO EACH	FIRE HYDRANT ADJUSTED TO GRADE, CITY OF TOLEDO EACH	
D-1	44	1082+08.57		LT										1									
D-2	44	1082+08.57		LT/RT									65										
D-3	44	1082+08.57		RT										1									
D-4	44	1082+08.57		RT	2							55											
D-5	44	1082+08.57	TO	1082+39.89	LT						38												
D-6	45	1082+39.09		LT																			
D-7	45	1086+46.50		LT	2							60											
D-8	45	1086+46.50		LT										1									
D-9	45	1086+46.50		LT/RT									65										
D-10	45	1086+46.50		RT										1									
D-11	48	107+57.30		LT																			
D-12	48	107+57.33	TO	107+88.53	7																		
D-13	49	110+71.68		LT																			
D-14	49	110+71.67		LT/RT								44											
D-15	49	110+71.67		RT										1									
UD-1	44	1081+89.66	TO	1082+00.00	LT																		
UD-2	44	1082+00.00	TO	1083+95.95	LT																		
UD-3	44	1081+89.66	TO	1082+00.00	RT																		
UD-4	44	1082+00.00	TO	1083+28.00	RT																		
UD-5	45	1085+41.79	TO	1086+46.50	LT																		
UD-6	45	1081+46.50	TO	1086+86.86	LT																		
UD-7	45	1084+84.79	TO	1086+46.50	RT																		
UD-8	45	1086+46.50	TO	1086+86.86	RT																		
UD-9	48	109+26.46	TO	110+71.67	LT																		
UD-10	49	110+71.67	TO	111+39.32	LT																		
UD-11	49	110+96.50	TO	110+71.67	RT																		
UD-12	49	110+71.67	TO	111+39.32	RT																		
UD-13	44	1083+31.00	TO	1083+97.00	LT&RT																1		
UD-14	45	1084+81.00	TO	1085+40.00	LT&RT																1		
UD-15	48	107+58.00	TO	108+16.00	LT&RT																		
UD-16	48	109+25.00	TO	109+94.00	LT&RT																1		
W-1	45	1086+09.37		LT																	1		
W-2	49	110+35.00	TO	111+45.00	RT																1		
S-1	44	1083+09.06																					
S-2	48	109+82.30		LT																	1		
TOTALS CARRIED TO GENERAL SUMMARY					11	358	1049	159	82	115	48	130	5	1	1	1	1	1	3		1	1	1

CALCULATED CEL	CHECKED JMZ	DRAINAGE SUBSUMMARY
35	147	

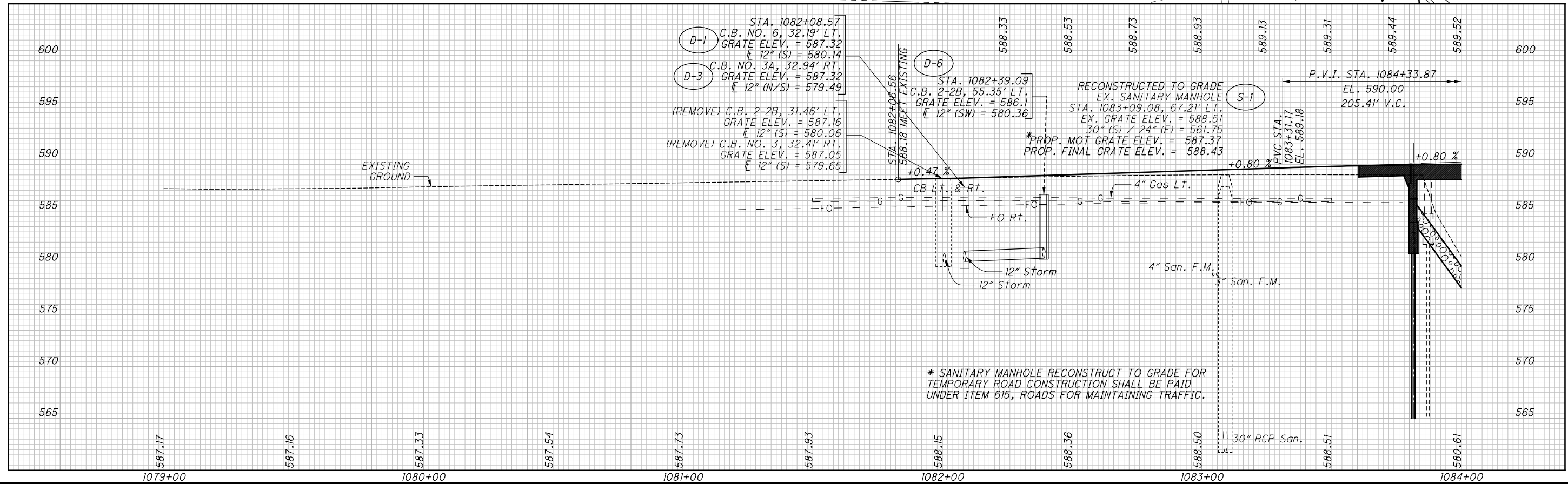
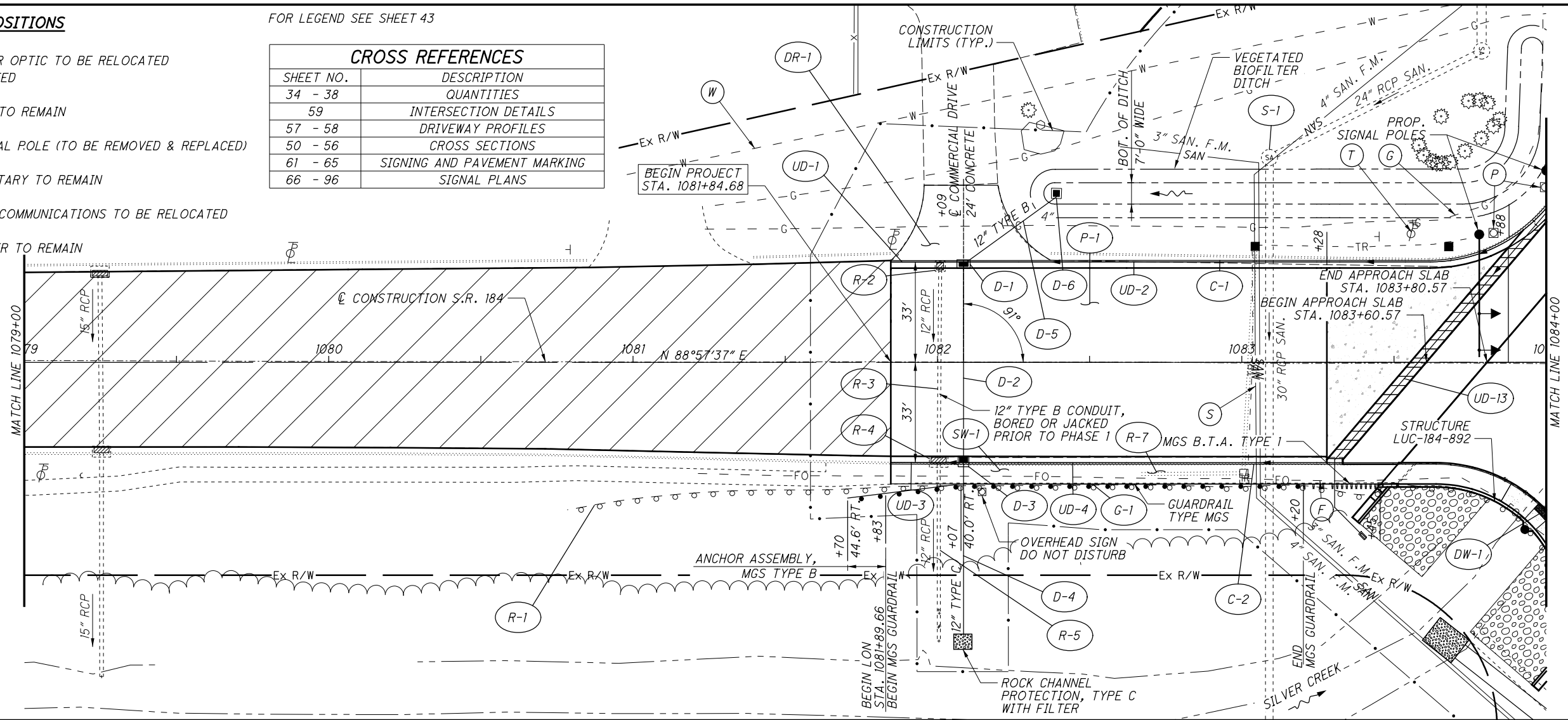
U:\Accounts\OHD01\OHD018001 - LUC 184 08 92\DESIGN\CT\ProjectData\01327\Design\Roadway\Sheets\01327_GS002.dgn 10/6/2021 2:45:57 PM CKaragory

UTILITY DISPOSITIONS

- (F) EXIST. FIBER OPTIC TO BE RELOCATED OR PROTECTED
- (G) EXIST. GAS TO REMAIN
- (P) EXIST. SIGNAL POLE (TO BE REMOVED & REPLACED)
- (S) EXIST. SANITARY TO REMAIN
- (T) EXIST. TELECOMMUNICATIONS TO BE RELOCATED
- (W) EXIST. WATER TO REMAIN

FOR LEGEND SEE SHEET 43

CROSS REFERENCES	
SHEET NO.	DESCRIPTION
34 - 38	QUANTITIES
59	INTERSECTION DETAILS
57 - 58	DRIVEWAY PROFILES
50 - 56	CROSS SECTIONS
61 - 65	SIGNING AND PAVEMENT MARKING
66 - 96	SIGNAL PLANS

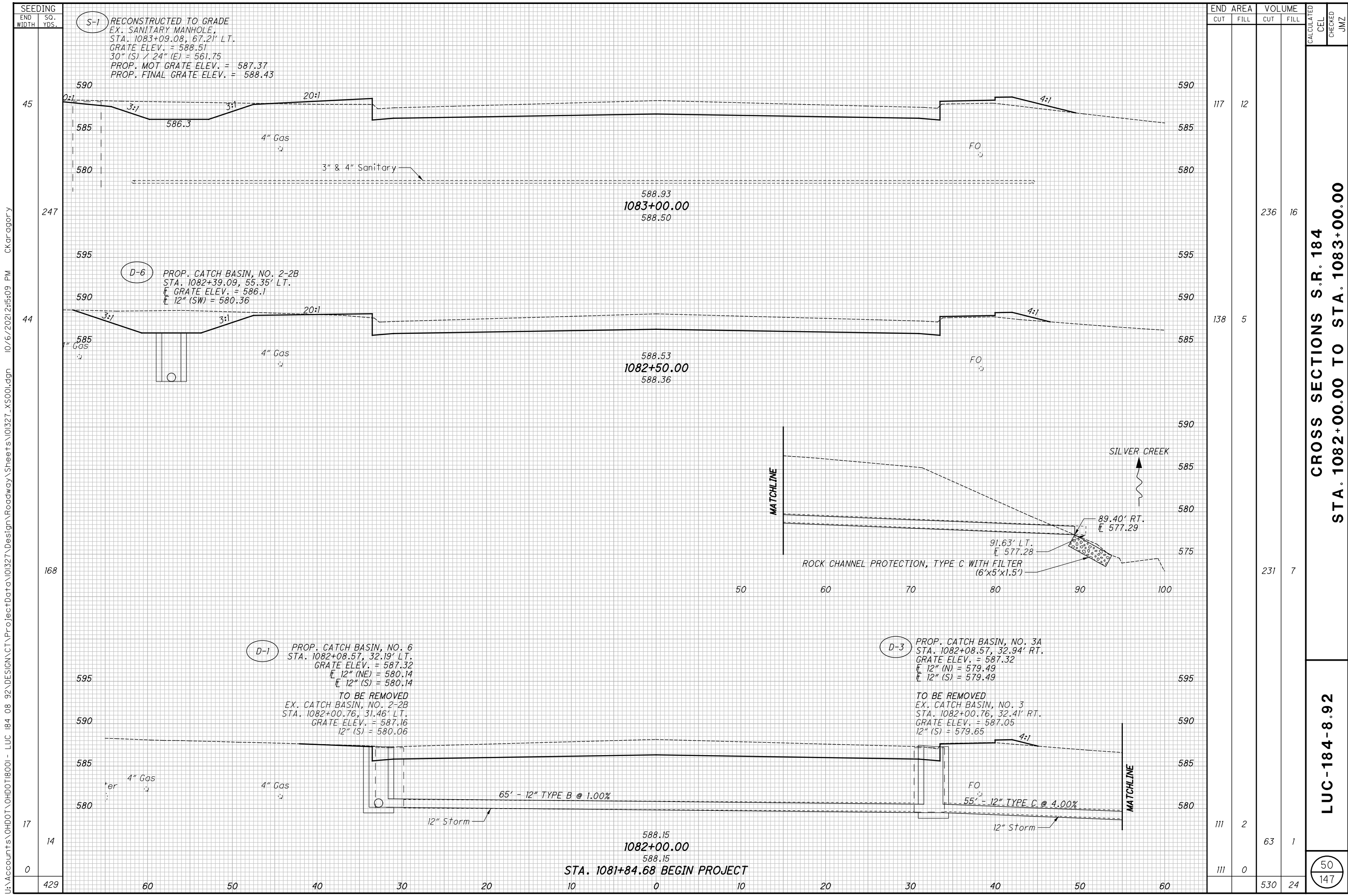


U:\Accounts\OHD018001 - LUC 184 08 92\DESIGN\CT\Project\Dat\01327\Design\Roadway\Sheets\01327_GPO03.dgn 10/6/2021 2:45:59 PM CKaragory



**PLAN AND PROFILE - S.R. 184
STA. 1079+00 TO STA. 1084+00**

LUC-184-8.92



SEEDING	END	
	WIDTH	SO. YDS.
	45	247
	44	168
	17	14
	0	429

END AREA	VOLUME		CALCULATED CEL	CHECKED JMZ
	CUT	FILL		
117	12	236	16	
138	5	231	7	
111	2	63	1	
111	0	530	24	

CROSS SECTIONS S.R. 184
STA. 1082+00.00 TO STA. 1083+00.00
LUC-184-8.92
 (50/147)

S-1 RECONSTRUCTED TO GRADE
 EX. SANITARY MANHOLE,
 STA. 1083+09.08, 67.21' LT.
 GRATE ELEV. = 588.51
 30" (S) / 24" (E) = 561.75
 PROP. MOT GRATE ELEV. = 587.37
 PROP. FINAL GRATE ELEV. = 588.43

D-6 PROP. CATCH BASIN, NO. 2-2B
 STA. 1082+39.09, 55.35' LT.
 GRATE ELEV. = 586.1
 12" (SW) = 580.36

D-1 PROP. CATCH BASIN, NO. 6
 STA. 1082+08.57, 32.19' LT.
 GRATE ELEV. = 587.32
 12" (NE) = 580.14
 12" (S) = 580.14
TO BE REMOVED
 EX. CATCH BASIN, NO. 2-2B
 STA. 1082+00.76, 31.46' LT.
 GRATE ELEV. = 587.16
 12" (S) = 580.06

D-3 PROP. CATCH BASIN, NO. 3A
 STA. 1082+08.57, 32.94' RT.
 GRATE ELEV. = 587.32
 12" (N) = 579.49
 12" (S) = 579.49
TO BE REMOVED
 EX. CATCH BASIN, NO. 3
 STA. 1082+00.76, 32.41' RT.
 GRATE ELEV. = 587.05
 12" (S) = 579.65

588.15
1082+00.00
 588.15
STA. 1081+84.68 BEGIN PROJECT

U:\Accounts\OHD018001 - LUC 184_08_92\DESIGN\CT\ProjectData\01327\Design\Roadway\Sheets\01327_XS001.dgn 10/6/2021 2:55:09 PM Ckaragory