

STATE OF OHIO
 DEPARTMENT OF TRANSPORTATION
LUC-475 / 23-9.54
/ 9.63 NOISEWALL

SYLVANIA TOWNSHIP
 CITY OF SYLVANIA
 LUCAS COUNTY

PROJECT DESCRIPTION

CONSTRUCTION OF TYPE II NOISE BARRIER WALLS
 ALONG U.S. 23 FROM I-475 TO MONROE ST.,
 ALONG I.R 475 RAMPS FROM US-23 TO RAILROAD,

EARTH DISTURBED AREAS

PROJECT EARTH DISTURBED AREA: 7.99 ACRES
 ESTIMATED CONTRACTOR EARTH DISTURBED AREA: 0.25 ACRES
 NOTICE OF INTENT EARTH DISTURBED AREA: 8.24 ACRES

LIMITED ACCESS

THIS IMPROVEMENT IS ESPECIALLY DESIGNED FOR
 THROUGH TRAFFIC AND HAS BEEN DECLARED A LIMITED
 ACCESS HIGHWAY OR FREEWAY BY ACTION OF THE
 DIRECTOR IN ACCORDANCE WITH THE PROVISIONS OF
 SECTION 5511.02 OF THE OHIO REVISED CODE.

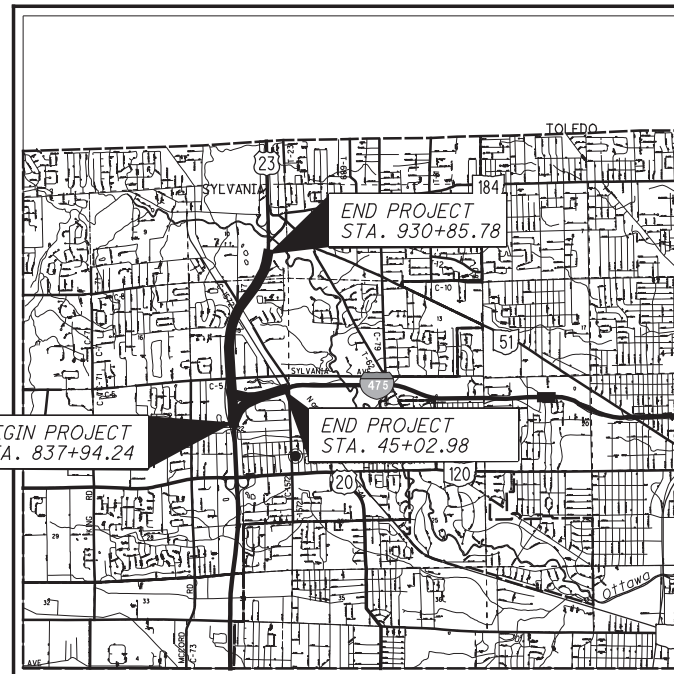
2019 SPECIFICATIONS

THE STANDARD SPECIFICATIONS OF THE STATE OF
 OHIO, DEPARTMENT OF TRANSPORTATION, INCLUDING
 SUPPLEMENTAL SPECIFICATIONS LISTED IN THE
 PLANS AND CHANGES LISTED IN THE PROPOSAL SHALL
 GOVERN THIS IMPROVEMENT.

I HEREBY APPROVE THESE PLANS AND DECLARE THAT
 THE MAKING OF THIS IMPROVEMENT WILL NOT REQUIRE
 THE CLOSING OF THE HIGHWAY TO TRAFFIC.

INDEX OF SHEETS:

TITLE SHEET	1		
SCHEMATIC PLAN	2-9		
TYPICAL SECTIONS	10-11		
NOISE BARRIER AESTHETIC DETAILS	12		
GENERAL NOTES	13-14		
MAINTENANCE OF TRAFFIC	15-16		
GENERAL SUMMARY	17-18		
SUBSUMMARIES	19-21		
PROJECT SITE PLAN	22-23		
PLAN AND PROFILE			
SYLVAN GREEN BARRIER	24-27		
BOX LANE BARRIER 1	28-32		
EAGLEHURST BARRIER 1	33-34		
EAGLEHURST BARRIER 2	35		
EAGLEHURST BARRIER 3	36-40		
TEJON BARRIER	41-44		
WHITEACRE BARRIER 1	45-49		
WHITEACRE BARRIER 2	50-52		
CROSS SECTIONS			
SYLVAN GREEN BARRIER	53-59		
BOX LANE BARRIER 1	60-68		
EAGLEHURST BARRIER 1	69-72		
EAGLEHURST BARRIER 2	73		
EAGLEHURST BARRIER 3	74-81		
TEJON BARRIER	82-89		
WHITEACRE BARRIER 1	90-98		
WHITEACRE BARRIER 2	99-102		
GUARDRAIL DETAILS	103-104		
ACCESS GATE DETAIL	105		
NOISE BARRIER DATA TABLES	106-112		
TRAFFIC CONTROL	113-121		
STRUCTURE FOUNDATION EXPLORATION			



LOCATION MAP

LATITUDE: 41° 41' 02" LONGITUDE: -83° 41' 40"



PORTION TO BE IMPROVED	-----	=====
INTERSTATE HIGHWAY	-----	=====
FEDERAL ROUTES	-----	=====
STATE ROUTES	-----	=====
COUNTY & TOWNSHIP ROADS	-----	=====
OTHER ROADS	-----	=====

DESIGN DESIGNATION

CURRENT ADT (2018)	60207
DESIGN YEAR ADT (2038)	67129
DESIGN HOURLY VOLUME (2038)	6713
DIRECTIONAL DISTRIBUTION	55%
TRUCKS (24 HOUR B&C)	27%
DESIGN SPEED	70 MPH
LEGAL SPEED	65 MPH
DESIGN FUNCTIONAL CLASSIFICATION:	
URBAN OTHER FREEWAY AND EXPRESSWAYS	
NHS PROJECT	YES

DESIGN EXCEPTIONS

NONE

UNDERGROUND UTILITIES
 Contact Two Working Days
 Before You Dig

OHIO811.org
 Before You Dig

OHIO811, 8-1-1, or 1-800-362-2764
 (Non-members must be called directly)

PLAN PREPARED BY:

 E.L. ROBINSON
 ENGINEERING
 1801 Watermark Drive, Suite 310 • Columbus, Ohio 43215
 www.elrobinsonengineering.com

ENGINEERS SEAL:

FOR SHEETS 106-112:



SIGNED: *Peter Narsavage*
 DATE: 6/15/20

ENGINEERS SEAL:

FOR THE REMAINDER
 OF THE PLANS:



SIGNED: *Brent Downing*
 DATE: 6/15/20

STANDARD CONSTRUCTION DRAWINGS						SUPPLEMENTAL SPECIFICATIONS	SPECIAL PROVISIONS
BP-5.1	1/18/19	MGS-3.1	1/19/18	MT-101.90	7/21/17	800	7/17/20
HW-2.1	7/20/18	MGS-4.3	1/18/13	TC-12.30	1/19/18	832	10/19/18
I-2.3	1/15/16	MGS-5.3	7/15/16	TC-21.21	4/17/20		
DM-1.1	7/21/17	RM-4.2	1/17/20	TC-41.10	7/19/13		
DM-1.2	1/18/13	RM-4.5	7/21/17	TC-41.20	10/18/13		
DM-4.1	7/20/18	RM-4.6	7/19/13	TC-51.11	1/15/16		
DM-4.4	1/15/16			TC-52.10	10/18/13		
F-1.1	7/19/13	NBS-1-09	1/19/18	TC-52.20	7/20/18		
F-3.2	7/18/14	MT-95.30	7/19/19				
MGS-1.1	1/19/18	MT-95.45	1/17/20				
MGS-2.1	1/19/18	MT-101.70	1/17/20				
		MT-101.75	1/17/20				

LUC-475 / 23-9.56 / 9.63 NOISEWALL		
1	9/10/20	REVISED SCD
NO.	DATE	DESCRIPTION
ISSUE RECORD		

APPROVED _____
 DATE _____ DISTRICT DEPUTY DIRECTOR

APPROVED _____
 DATE _____ DIRECTOR, DEPARTMENT OF
 TRANSPORTATION

FEDERAL PROJECT NO. E161138
 CONSTRUCTION PROJECT NO. 103647
 RAILROAD INVOLVEMENT NONE
 LUC-475 / 23-9.54 / 9.63 NOISEWALL
 1 / 121

P:\103647_LUC23_NOISEWALL\Design\Roadway\Sheets\103647\1001.dgn Sheet 9/10/2020 12:22:09 PM scor.coran

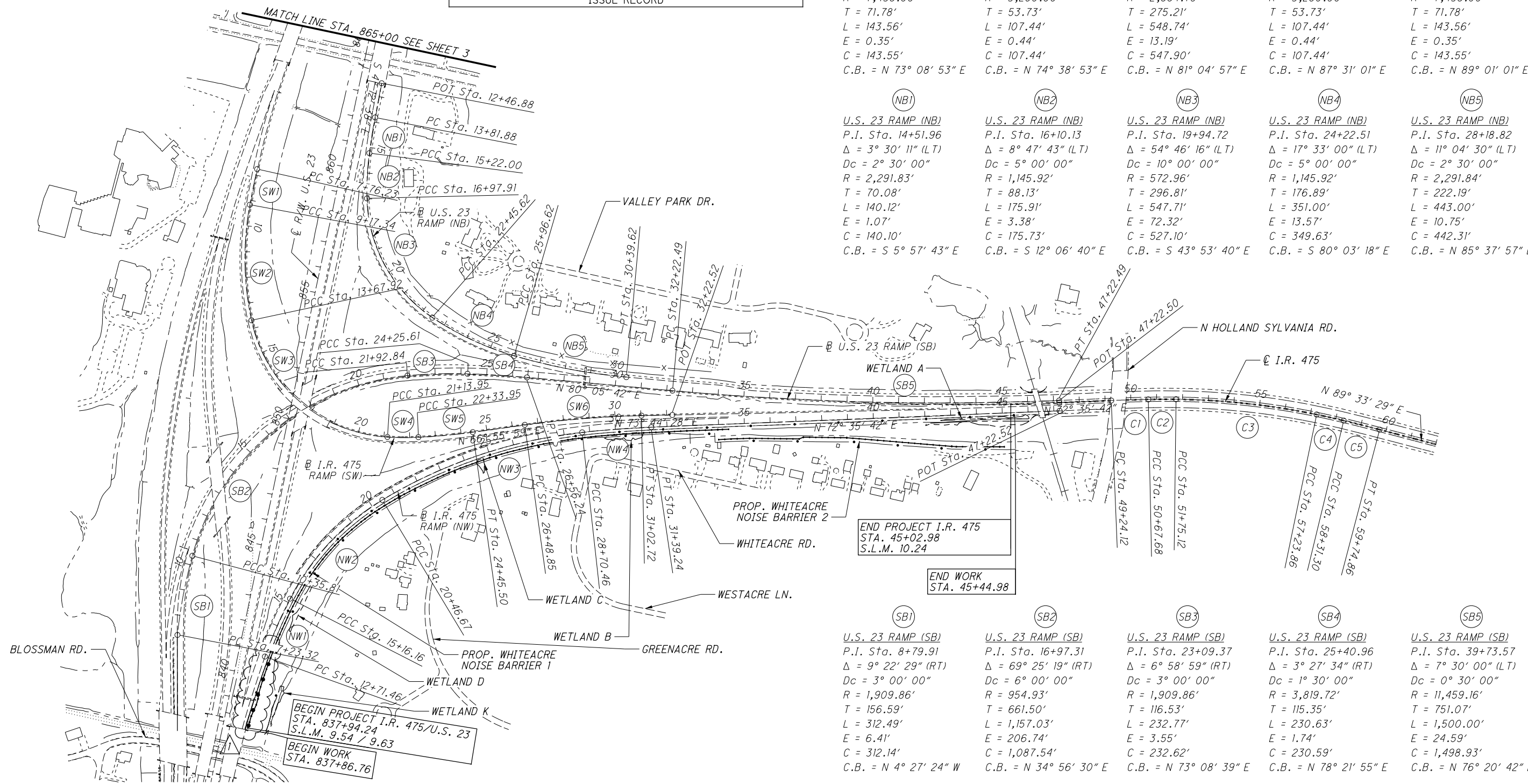
LUC-475 / 23-9.56 / 9.63 NOISEWALL		
NO.	DATE	DESCRIPTION
1	9/10/20	ADDED PROP. GUARDRAIL
ISSUE RECORD		

C1	C2	C3	C4	C5
<u>I.R. 475</u> P.I. Sta. 49+95.90 $\Delta = 1^\circ 06' 21''$ (RT) Dc = 0° 46' 13" R = 7,438.00' T = 71.78' L = 143.56' E = 0.35' C = 143.55' C.B. = N 73° 08' 53" E	<u>I.R. 475</u> P.I. Sta. 51+21.40 $\Delta = 1^\circ 53' 39''$ (RT) Dc = 1° 45' 47" R = 3,250.00' T = 53.73' L = 107.44' E = 0.44' C = 107.44' C.B. = N 74° 38' 53" E	<u>I.R. 475</u> P.I. Sta. 54+50.33 $\Delta = 10^\circ 58' 29''$ (RT) Dc = 2° 00' 00" R = 2,864.79' T = 275.21' L = 548.74' E = 13.19' C = 547.90' C.B. = N 81° 04' 57" E	<u>I.R. 475</u> P.I. Sta. 57+77.58 $\Delta = 1^\circ 53' 39''$ (RT) Dc = 1° 45' 47" R = 3,250.00' T = 53.73' L = 107.44' E = 0.44' C = 107.44' C.B. = N 87° 31' 01" E	<u>I.R. 475</u> P.I. Sta. 59+03.08 $\Delta = 1^\circ 06' 21''$ (RT) Dc = 0° 46' 13" R = 7,438.00' T = 71.78' L = 143.56' E = 0.35' C = 143.55' C.B. = N 89° 01' 01" E

NB1	NB2	NB3	NB4	NB5
<u>U.S. 23 RAMP (NB)</u> P.I. Sta. 14+51.96 $\Delta = 3^\circ 30' 11''$ (LT) Dc = 2° 30' 00" R = 2,291.83' T = 70.08' L = 140.12' E = 1.07' C = 140.10' C.B. = S 5° 57' 43" E	<u>U.S. 23 RAMP (NB)</u> P.I. Sta. 16+10.13 $\Delta = 8^\circ 47' 43''$ (LT) Dc = 5° 00' 00" R = 1,145.92' T = 88.13' L = 175.91' E = 3.38' C = 175.73' C.B. = S 12° 06' 40" E	<u>U.S. 23 RAMP (NB)</u> P.I. Sta. 19+94.72 $\Delta = 54^\circ 46' 16''$ (LT) Dc = 10° 00' 00" R = 572.96' T = 296.81' L = 547.71' E = 72.32' C = 527.10' C.B. = S 43° 53' 40" E	<u>U.S. 23 RAMP (NB)</u> P.I. Sta. 24+22.51 $\Delta = 17^\circ 33' 00''$ (LT) Dc = 5° 00' 00" R = 1,145.92' T = 176.89' L = 351.00' E = 13.57' C = 349.63' C.B. = S 80° 03' 18" E	<u>U.S. 23 RAMP (NB)</u> P.I. Sta. 28+18.82 $\Delta = 11^\circ 04' 30''$ (LT) Dc = 2° 30' 00" R = 2,291.84' T = 222.19' L = 443.00' E = 10.75' C = 442.31' C.B. = N 85° 37' 57" E

SB1	SB2	SB3	SB4	SB5
<u>U.S. 23 RAMP (SB)</u> P.I. Sta. 8+79.91 $\Delta = 9^\circ 22' 29''$ (RT) Dc = 3° 00' 00" R = 1,909.86' T = 156.59' L = 312.49' E = 6.41' C = 312.14' C.B. = N 4° 27' 24" W	<u>U.S. 23 RAMP (SB)</u> P.I. Sta. 16+97.31 $\Delta = 69^\circ 25' 19''$ (RT) Dc = 6° 00' 00" R = 954.93' T = 661.50' L = 1,157.03' E = 206.74' C = 1,087.54' C.B. = N 34° 56' 30" E	<u>U.S. 23 RAMP (SB)</u> P.I. Sta. 23+09.37 $\Delta = 6^\circ 58' 59''$ (RT) Dc = 3° 00' 00" R = 1,909.86' T = 116.53' L = 232.77' E = 3.55' C = 232.62' C.B. = N 73° 08' 39" E	<u>U.S. 23 RAMP (SB)</u> P.I. Sta. 25+40.96 $\Delta = 3^\circ 27' 34''$ (RT) Dc = 1° 30' 00" R = 3,819.72' T = 115.35' L = 230.63' E = 1.74' C = 230.59' C.B. = N 78° 21' 55" E	<u>U.S. 23 RAMP (SB)</u> P.I. Sta. 39+73.57 $\Delta = 7^\circ 30' 00''$ (LT) Dc = 0° 30' 00" R = 11,459.16' T = 751.07' L = 1,500.00' E = 24.59' C = 1,498.93' C.B. = N 76° 20' 42" E

NW1	NW2	NW3	NW4	SW1	SW2	SW3	SW4	SW5	SW6
<u>I.R. 475 RAMP (NW)</u> P.I. Sta. 13+93.98 $\Delta = 7^\circ 20' 28''$ (RT) Dc = 3° 00' 00" R = 1,909.86' T = 122.52' L = 244.70' E = 3.93' C = 244.54' C.B. = N 8° 20' 55" E	<u>I.R. 475 RAMP (NW)</u> P.I. Sta. 17+88.46 $\Delta = 31^\circ 49' 50''$ (RT) Dc = 6° 00' 00" R = 954.93' T = 272.29' L = 530.51' E = 38.06' C = 523.71' C.B. = N 27° 56' 04" E	<u>I.R. 475 RAMP (NW)</u> P.I. Sta. 24+65.07 $\Delta = 24^\circ 42' 49''$ (RT) Dc = 3° 00' 00" R = 1,909.86' T = 418.40' L = 823.79' E = 45.29' C = 817.42' C.B. = N 56° 12' 24" E	<u>I.R. 475 RAMP (NW)</u> P.I. Sta. 30+04.90 $\Delta = 4^\circ 01' 54''$ (RT) Dc = 1° 30' 00" R = 3,819.72' T = 134.44' L = 268.78' E = 2.37' C = 268.72' C.B. = N 70° 34' 45" E	<u>I.R. 475 RAMP (SW)</u> P.I. Sta. 8+46.79 $\Delta = 2^\circ 07' 00''$ (LT) Dc = 1° 30' 00" R = 3,819.72' T = 134.44' L = 141.11' E = 0.65' C = 141.10' C.B. = S 3° 35' 18" E	<u>I.R. 475 RAMP (SW)</u> P.I. Sta. 11+45.58 $\Delta = 22^\circ 31' 43''$ (LT) Dc = 5° 00' 00" R = 1,145.92' T = 228.24' L = 450.57' E = 22.51' C = 447.68' C.B. = S 15° 54' 39" E	<u>I.R. 475 RAMP (SW)</u> P.I. Sta. 18+04.42 $\Delta = 74^\circ 36' 10''$ (LT) Dc = 10° 00' 00" R = 572.96' T = 436.50' L = 746.03' E = 147.33' C = 694.44' C.B. = S 64° 28' 36" E	<u>I.R. 475 RAMP (SW)</u> P.I. Sta. 21+74.00 $\Delta = 6^\circ 00' 00''$ (LT) Dc = 5° 00' 00" R = 1,145.92' T = 60.06' L = 120.00' E = 1.57' C = 119.95' C.B. = N 75° 13' 19" E	<u>I.R. 475 RAMP (SW)</u> P.I. Sta. 23+39.80 $\Delta = 5^\circ 17' 20''$ (LT) Dc = 2° 30' 00" R = 2,291.83' T = 105.85' L = 211.56' E = 2.44' C = 211.48' C.B. = N 69° 34' 39" E	<u>I.R. 475 RAMP (SW)</u> P.I. Sta. 28+76.05 $\Delta = 6^\circ 48' 29''$ (RT) Dc = 1° 30' 00" R = 3,819.72' T = 227.20' L = 453.87' E = 6.75' C = 453.60' C.B. = N 70° 20' 14" E



CALCULATED
KRF
CHECKED
BBD

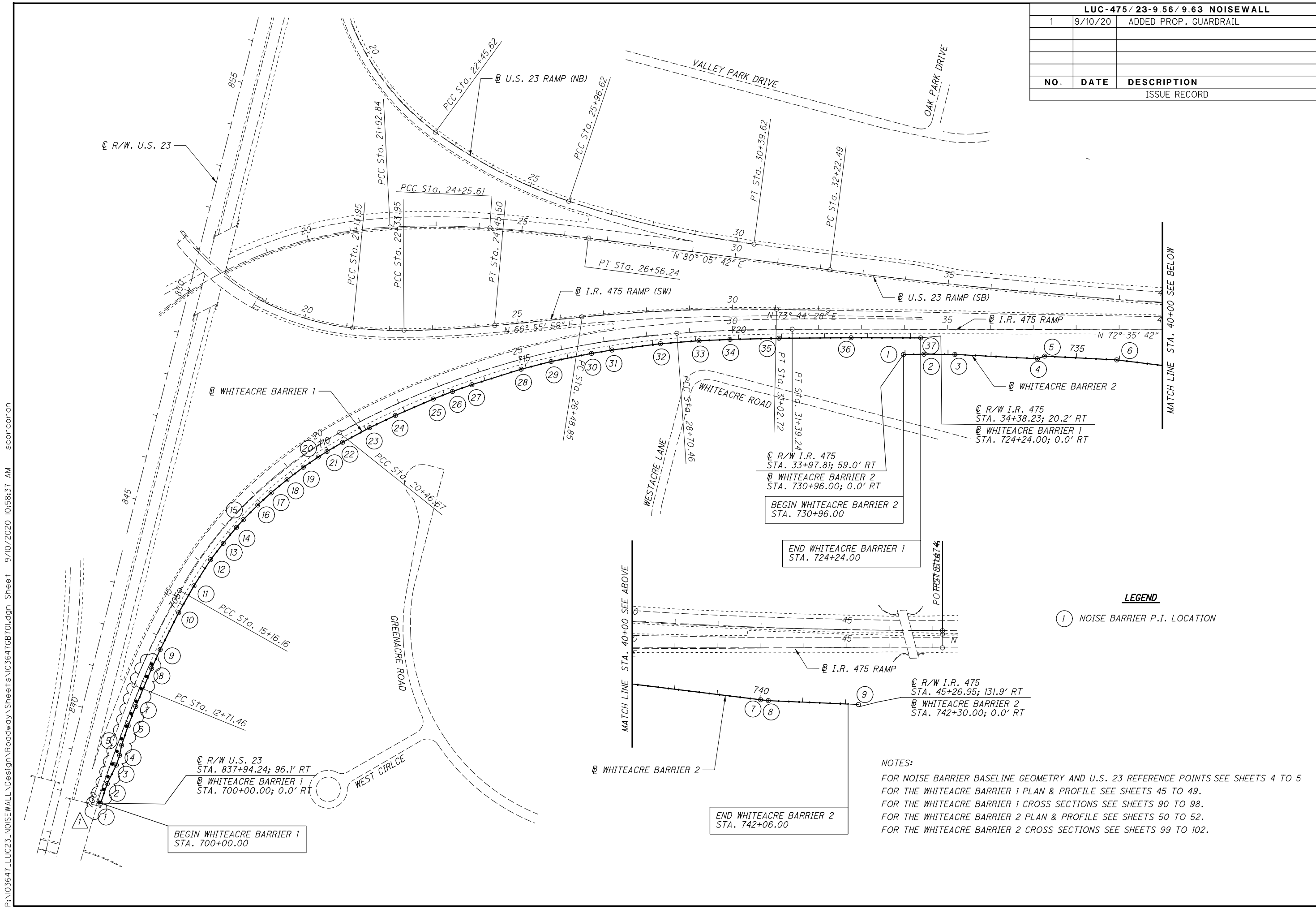
SCHEMATIC PLAN

LUC-475 / 23-9.54 / 9.63 NOISEWALL

P:\103647_LUC23_NOISEWALL\Design\Roadway_Sheets\103647\00.dgn Sheet 9/10/2020 10:58:34 AM scorcoran

LUC-475 / 23-9.56 / 9.63 NOISEWALL		
1	9/10/20	ADDED PROP. GUARDRAIL
NO.	DATE	DESCRIPTION
		ISSUE RECORD

CALCULATED MJT
 CHECKED BBD
 0 100 200
 HORIZONTAL SCALE IN FEET



LEGEND
 (1) NOISE BARRIER P.I. LOCATION

NOTES:
 FOR NOISE BARRIER BASELINE GEOMETRY AND U.S. 23 REFERENCE POINTS SEE SHEETS 4 TO 5
 FOR THE WHITEACRE BARRIER 1 PLAN & PROFILE SEE SHEETS 45 TO 49.
 FOR THE WHITEACRE BARRIER 1 CROSS SECTIONS SEE SHEETS 90 TO 98.
 FOR THE WHITEACRE BARRIER 2 PLAN & PROFILE SEE SHEETS 50 TO 52.
 FOR THE WHITEACRE BARRIER 2 CROSS SECTIONS SEE SHEETS 99 TO 102.

**SCHEMATIC PLAN
 WHITEACRE BARRIERS**

**LUC-475 / 23-9.54
 / 9.63 NOISEWALL**

P:\103647_LUC23_NOISEWALL\Design\Roadway\Sheets\103647\B701.dgn Sheet 9/10/2020 10:58:37 AM scor.coron

P:\03647_LUC23_NOISEWALL\Design\Roadway\Sheets\03647_G002.dgn Sheet 9/10/2020 10:58:44 AM scor-cor-on

SHEET NUM.										PART.		ITEM	ITEM EXT	GRAND TOTAL	UNIT	DESCRIPTION	SEE SHEET NO.
14	15	16	19	20	21	22	113	01/NHS/OT	02/IMS/OT								
TRAFFIC CONTROL																	
							1			1	625	32000	1	EACH	GROUND ROD		
										105	626	00102	105	EACH	BARRIER REFLECTOR, TYPE 1, ONE WAY		
										17	626	00110	17	EACH	BARRIER REFLECTOR, TYPE 2, ONE WAY		
							88			88	630	03100	88	FT	GROUND MOUNTED SUPPORT, NO. 3 POST		
							65.4			65.4	630	06400	65.4	FT	GROUND MOUNTED STRUCTURAL BEAM SUPPORT, S4X7.7		
							42.4			42.4	630	06500	42.4	FT	GROUND MOUNTED STRUCTURAL BEAM SUPPORT, W6X9		
							49.2			49.2	630	07500	49.2	FT	GROUND MOUNTED STRUCTURAL BEAM SUPPORT, W10X22		
							46.5			46.5	630	07600	46.5	FT	GROUND MOUNTED STRUCTURAL BEAM SUPPORT, W10X12		
							10			10	630	09000	10	EACH	BREAKAWAY STRUCTURAL BEAM CONNECTION		
							1			1	630	21200	1	EACH	OVERHEAD SIGN SUPPORT, TYPE TC-12.30, DESIGN 12		
							38			38	630	80100	38	SF	SIGN, FLAT SHEET		
							73			73	630	80200	73	SF	SIGN, GROUND MOUNTED EXTRUSHEET		
							253			253	630	80224	253	SF	SIGN, OVERHEAD EXTRUSHEET		
							10			10	630	84500	10	EACH	GROUND MOUNTED STRUCTURAL BEAM SUPPORT FOUNDATION		
							1			1	630	84510	1	EACH	RIGID OVERHEAD SIGN SUPPORT FOUNDATION		
							6			6	630	84900	6	EACH	REMOVAL OF GROUND MOUNTED SIGN AND DISPOSAL		
							3			3	630	85400	3	EACH	REMOVAL OF GROUND MOUNTED MAJOR SIGN AND DISPOSAL		
							5			5	630	85600	5	EACH	REMOVAL OF GROUND MOUNTED MAJOR SIGN AND REERECTION		
							7			7	630	86002	7	EACH	REMOVAL OF GROUND MOUNTED POST SUPPORT AND DISPOSAL		
							5			5	630	86102	5	EACH	REMOVAL OF GROUND MOUNTED STRUCTURAL BEAM SUPPORT AND DISPOSAL		
LIGHTING																	
4										4	625	00450	4	EACH	CONNECTION, FUSED PULL APART		
200										200	625	24320	200	FT	1-1/2" DUCT CABLE WITH THREE NO. 4 AWG 2400 VOLT CABLES		
25										25	625	25500	25	FT	CONDUIT, 3", 725.04		
425										425	625	29001	425	FT	TRENCH, AS PER PLAN	14	
1										1	625	30700	1	EACH	PULL BOX, 725.08, 18"		
NOISE BARRIERS																	
			194,324							138,986	55,338	SPECIAL	60610210	194,324	SF	NOISE BARRIER (REFLECTIVE)	14
MAINTENANCE OF TRAFFIC																	
650										650	607	98000	650	FT	FENCE, MISC.: TEMPORARY FENCE	14	
		120								120	614	11110	120	HOUR	LAW ENFORCEMENT OFFICER WITH PATROL CAR FOR ASSISTANCE		
	5									5	614	12336	5	EACH	WORK ZONE IMPACT ATTENUATOR (UNIDIRECTIONAL)		
		5								5	614	12500	5	EACH	REPLACEMENT SIGN		
		20								20	614	12600	20	EACH	REPLACEMENT DRUM		
		206								206	614	13310	206	EACH	BARRIER REFLECTOR, TYPE 1, ONE-WAY		
		206								206	614	13350	206	EACH	OBJECT MARKER, ONE WAY		
		29								29	616	10000	29	MGAL	WATER		
		10,300								10,300	622	41100	10,300	FT	PORTABLE BARRIER, UNANCHORED		
INCIDENTALS																	
										LS	103	05000	LS		PREMIUM FOR CONTRACT PERFORMANCE BOND AND FOR PAYMENT BOND		
										LS	108	10000	LS		CPM PROGRESS SCHEDULE		
										LS	614	11000	LS		MAINTAINING TRAFFIC		
										LS	623	10000	LS		CONSTRUCTION LAYOUT STAKES AND SURVEYING		
										LS	624	10000	LS		MOBILIZATION		
LUC-475 / 23-9.56 / 9.63 NOISEWALL																	
															1	9/10/20	MODIFIED PAY ITEMS
															NO.	DATE	DESCRIPTION
																	ISSUE RECORD

CALCULATED SWC CHECKED KRM
GENERAL SUMMARY
LUC-475 / 23-9.57 / 9.63 NOISEWALL
 18
 121

P:\103647.LUC23.NOISEWALL\Drawings\Roadway_Sheets\103647GS101.dgn Sheet 9/10/2020 10:58:45 AM scorcoran

SHEET NO.	REFERENCE NO.	STATION		SIDE	601		602		606				607		609		611		622				626	
					TIED CONCRETE BLOCK MAT, TYPE 2	CONCRETE MASONRY	SPECIAL - NOISE BARRIER (REFLECTIVE)	GUARDRAIL, TYPE MGS	ANCHOR ASSEMBLY, MGS TYPE E	MGS BRIDGE TERMINAL ASSEMBLY, TYPE 1	MGS BRIDGE TERMINAL ASSEMBLY, TYPE 2	FENCE, TYPE CLT	GATE, TYPE CLT, AS PER PLAN	CURB, TYPE 4-C	15" CONDUIT, TYPE C	INLET, NO. 3 SINGLE SLOPE BARRIER, TYPE D	CONCRETE BARRIER, SINGLE SLOPE, TYPE D, AS PER PLAN	BARRIER TRANSITION	CONCRETE BARRIER END SECTION, TYPE D	CONCRETE BARRIER, END ANCHORAGE, REINFORCED, TYPE D	BARRIER REFLECTOR, TYPE 1, ONE-WAY	BARRIER REFLECTOR, TYPE 2, ONE-WAY		
		SY	CY		SF	FT	EA	EA	EA	FT	EACH	FT	FT	EA	FT	EA	EA	EA	EA	EA	EA			
FROM	TO																							
SYLVAN GREEN BARRIER																								
24-27	NB-1	300+24.00	318+48.00	BL			27642																	
103	GR-1	906+58.00 (U.S. 23)	908+74.81 (U.S. 23)	LT				200.0		1	1										3			
24-27	B-1	908+76.81 (U.S. 23)	914+82.00 (U.S. 23)	LT														577		1	1	20		
24-27		914+82.00 (U.S. 23)	921+12.00 (U.S. 23)	LT														610		1	1			
24-27	C-1	921+12.00 (U.S. 23)	927+37.00 (U.S. 23)	LT														598		1	1	2		
27		927+37.00 (U.S. 23)	927+57.00 (U.S. 23)	LT																				
27	GR-2	927+34.50 (U.S. 23)	928+63.50 (U.S. 23)	LT				62.5	1	1														
27	D-1	927+57.00 (U.S. 23)	927+67.00 (U.S. 23)	LT	11																			
BOX LANE BARRIER																								
28-32	NB-2	400+08.00	423+92.00	BL			34988																	
103; 28-30	B-2	905+76.00 (U.S. 23)	406+65.00	RT														778	1		1	26		
28-30		406+65.00	414+22.00	RT															737		1		1	
30	D-2	414+22.00	414+42.00	RT		0.27								22	1									
30-32	B-3	414+42.00	418+77.00	RT														402			2	2		
30-32		418+77.00	931+00.00 (U.S. 23)	RT														515		1	1			
32	D-3	931+00.00 (U.S. 23)	931+10.00 (U.S. 23)	LT	11																			
EAGLEHURST BARRIER 1																								
33-34	NB-3	500+00.00	509+84.00	BL			14376																	
33-34	B-4	865+25.00 (U.S. 23)	504+75.00	LT														459	1		1	11		
33-34		504+75.00	875+25.00 (U.S. 23)	LT															500		1		1	
34	C-2	875+25.00 (U.S. 23)	875+45.00 (U.S. 23)	LT										20										
34	D-4	875+45.00 (U.S. 23)	875+55.00 (U.S. 23)	LT	17																			
EAGLEHURST BARRIER 2																								
35	NB-4	520+00.00	522+10.00	CL			3360																	
35	F-1	875+00.00 (U.S. 23)	875+00.00 (U.S. 23)	LT							8													
35	F-2	877+14.53 (U.S. 23)	877+24.69 (U.S. 23)	LT							12													
35	GR-3	875+22.50 (U.S. 23)	876+73.00 (U.S. 23)	LT				125.0		1	1										3			
EAGLEHURST BARRIER 3																								
36-40	NB-5	531+60.00	554+88.00	BL			34080																	
36	D-5	876+61.00 (U.S. 23)	876+71.00 (U.S. 23)	RT	19																			
36-40	B-5	876+71.00 (U.S. 23)	539+44.00	RT														761		1	1	24		
36-40		539+44.00	574+35.00	RT														776		1	1			
36-40		574+35.00	899+89.00 (U.S. 23)	RT														758	1					
TEJON BARRIER																								
41-44	NB-6	601+50.00	618+06.00	BL			24540																	
41	GR-4	874+90.90 (U.S. 23)	876+19.14 (U.S. 23)	RT				62.5	1	1											2			
41	D-6	875+91.00 (U.S. 23)	876+01.00 (U.S. 23)	RT	17																			
41	C-3	876+01.00 (U.S. 23)	876+16.64 (U.S. 23)	RT										16										
41-44	B-6	876+16.64 (U.S. 23)	607+00.00	RT														537		1	1	24		
41-44		607+00.00 (U.S. 23)	612+50.00	RT															536		1		1	
41-44	GR-5	612+50.00	893+29.00 (U.S. 23)	RT														559		1	1	2		
44		893+26.30 (U.S. 23)	894+15.30 (U.S. 23)	RT					87.5		1													
WHITEACRE BARRIER 1																								
45-49	NB-7	700+00.00	734+24.00	CL			38948																	
45	GR-6	837+87.00 (U.S. 23)	703+50.00	LT				350		1											5			
WHITEACRE BARRIER 2																								
50-52	NB-8	730+96.00	742+30.00	CL			15390																	
LANCELOT ROAD																								
105	F-5	542+30.28	542+39.19	LT							48													
105	F-6	542+39.19	542+55.03	LT							1													
105	F-7	542+55.03	542+68.98	LT							48													
TOTALS CARRIED TO GENERAL SUMMARY					75	0.3	194324	887.5	2	4	4	116	1	56	22	1		9103	3	6	12	105	17	

NOISE BARRIER SUBSUMMARY
LUC-475 / 23-9.58 / 9.63 NOISEWALL

CALCULATED
SWC
CHECKED
MLL

19
121

SHEET NO.	REFERENCE NO.	STATION		SIDE	202													
		FROM	TO		CURB AND GUTTER REMOVED FT	PIPE REMOVED, 24" AND UNDER FT	GUARDRAIL REMOVED FT	ANCHOR ASSEMBLY REMOVED, TYPE E EA	ANCHOR ASSEMBLY REMOVED, TYPE T EA	BRIDGE TERMINAL ASSEMBLY REMOVED, TYPE 1 EA	BRIDGE TERMINAL ASSEMBLY REMOVED, TYPE 2 EA	CATCH BASIN REMOVED EACH	FENCE REMOVED FT					
SYLVAN GREEN BARRIER																		
103; 24-25	R-1	906+58.74 (U.S. 23)	917+88.83 (U.S. 23)	LT			1109	1		1								
BOX LANE BARRIER																		
103; 28-30	R-2	905+93.47 (U.S. 23)	917+82.56 (U.S. 23)	RT			1169		1		1							
103; 28-29	R-3	905+93.47 (U.S. 23)	914+93.00 (U.S. 23)	RT	878													
29	R-4	914+98.00 (U.S. 23)	914+98.00 (U.S. 23)	RT		50						1						
30	R-5	920+81.85 (U.S. 23)	922+57.25 (U.S. 23)	RT			113	1	1									
EAGLEHURST BARRIER 1																		
33-34	R-6	865+41.59 (U.S. 23)	871+95.17 (U.S. 23)	LT			579	1		1								
EAGLEHURST BARRIER 2																		
35	R-7	875+00.00 (U.S. 23)	877+24.69 (U.S. 23)	LT										225				
EAGLEHURST BARRIER 3																		
36	R-8	875+60.12 (U.S. 23)	877+24.28 (U.S. 23)	LT			102	1	1									
38-40	R-9	886+78.98 (U.S. 23)	899+73.55 (U.S. 23)	LT			1303		1		1							
TEJON BARRIER																		
43-44	R-10	884+72.55 (U.S. 23)	898+75.61 (U.S. 23)	RT			929	1										
WHITEACRE BARRIER 1																		
45	R-11	837+87.00 (U.S. 23)	703+50.00	RT			350				1							
LANCELOT																		
105	R-12	542+34.11 (EAGLE 3)	542+61.07 (EAGLE 3)	LT			26											
105	R-13	542+30.27 (EAGLE 3)	542+68.95 (EAGLE 3)	LT										40				
TOTALS CARRIED TO GENERAL SUMMARY					878	50	5679	5	4	2	3	1	265					

CALCULATED SWC
 CHECKED MLL
REMOVAL SUBSUMMARY
LUC-475 / 23-9.60
/ 9.63 NOISEWALL
 20
 121

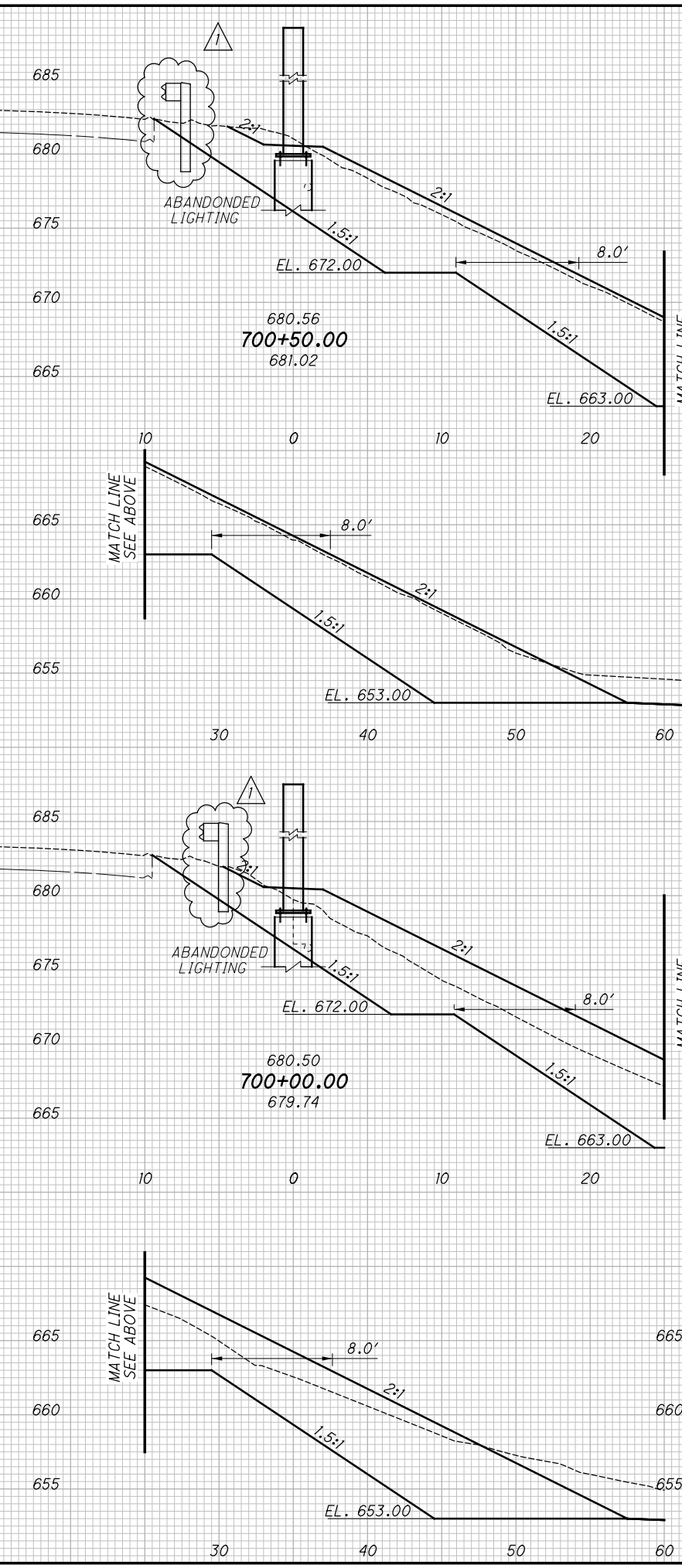
LUC-475 / 23-9.56 / 9.63 NOISEWALL		
1	9/10/20	ADDED REMOVAL QUANTITIES
NO.	DATE	DESCRIPTION
		ISSUE RECORD

P:\03647_LUC23_NOISEWALL\Design\Roadway\Sheets\03647GS103.dgn Sheet 9/10/2020 10:58:47 AM scokcoran

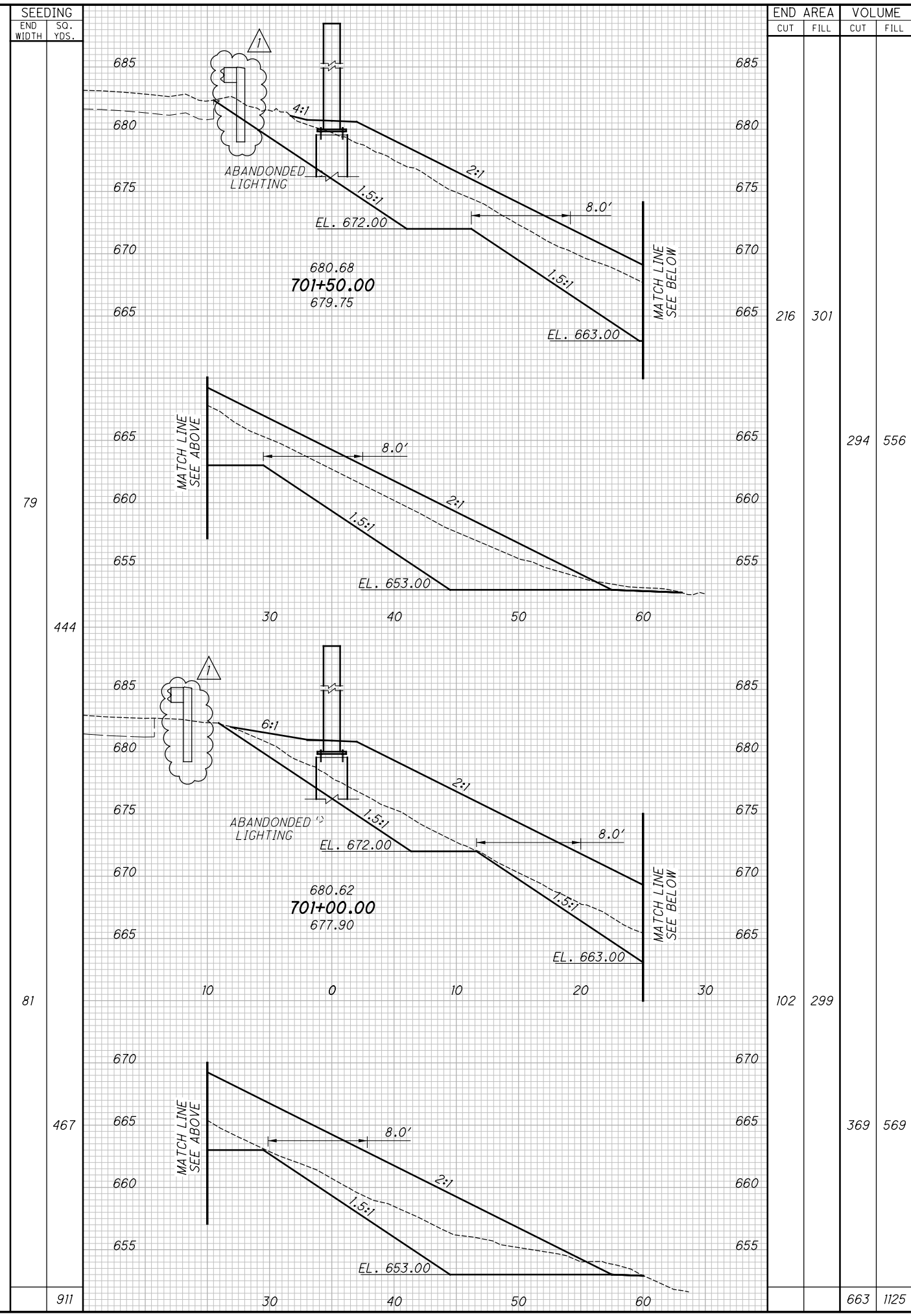


P:\03647_LUC23_NOISEWALL\Design\Roadway\Sheets\03647XS701.dgn XS_SHEET_temporary_model_name_1 9/10/2020 10:59:54 AM scor-cor-on

STATION	SEEDING	
	END WIDTH	SO. YDS.
86		
478		
85		
0		
478		



STATION	END AREA		VOLUME	
	CUT	FILL	CUT	FILL
86				
478				
85				
0				
478				

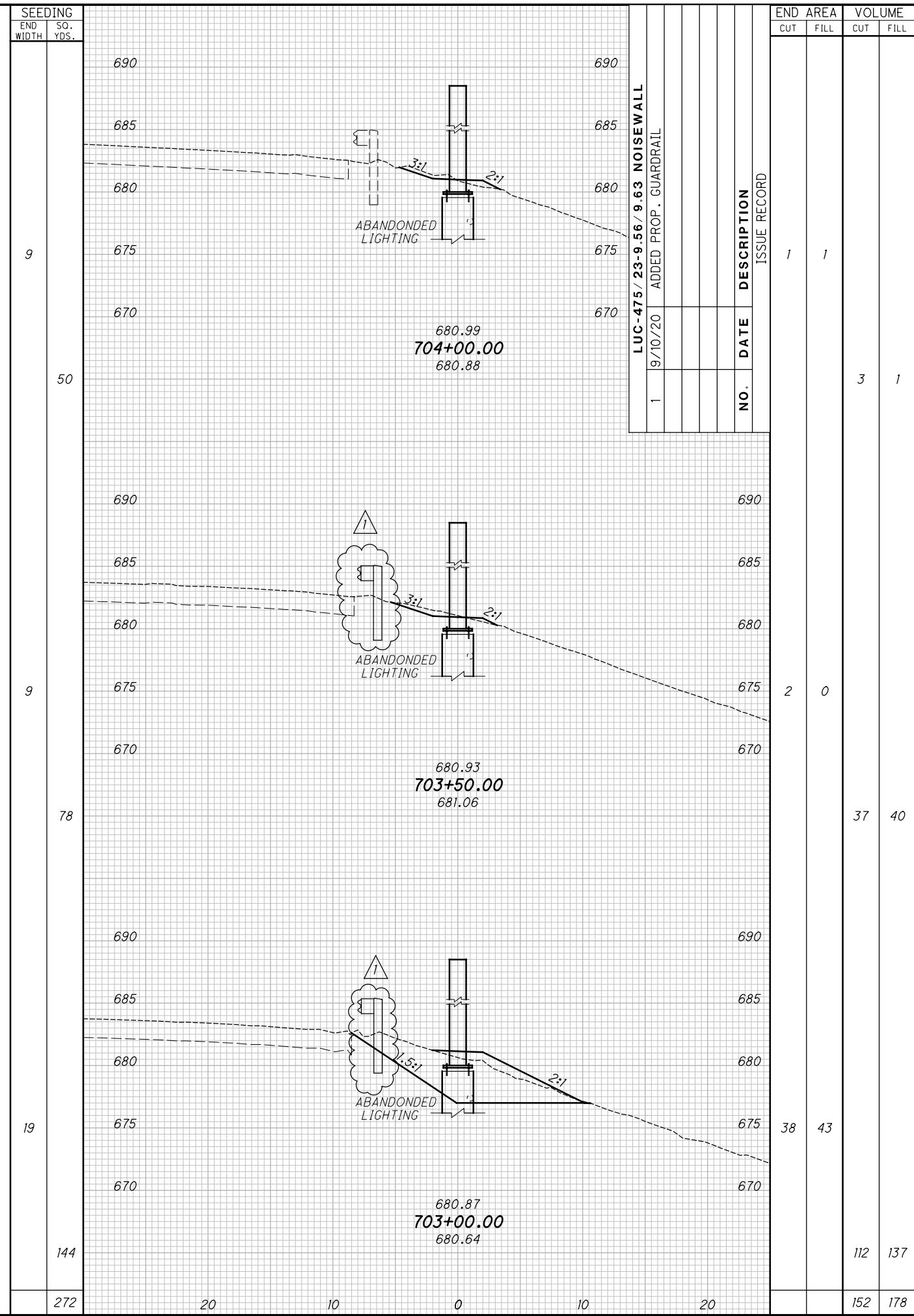
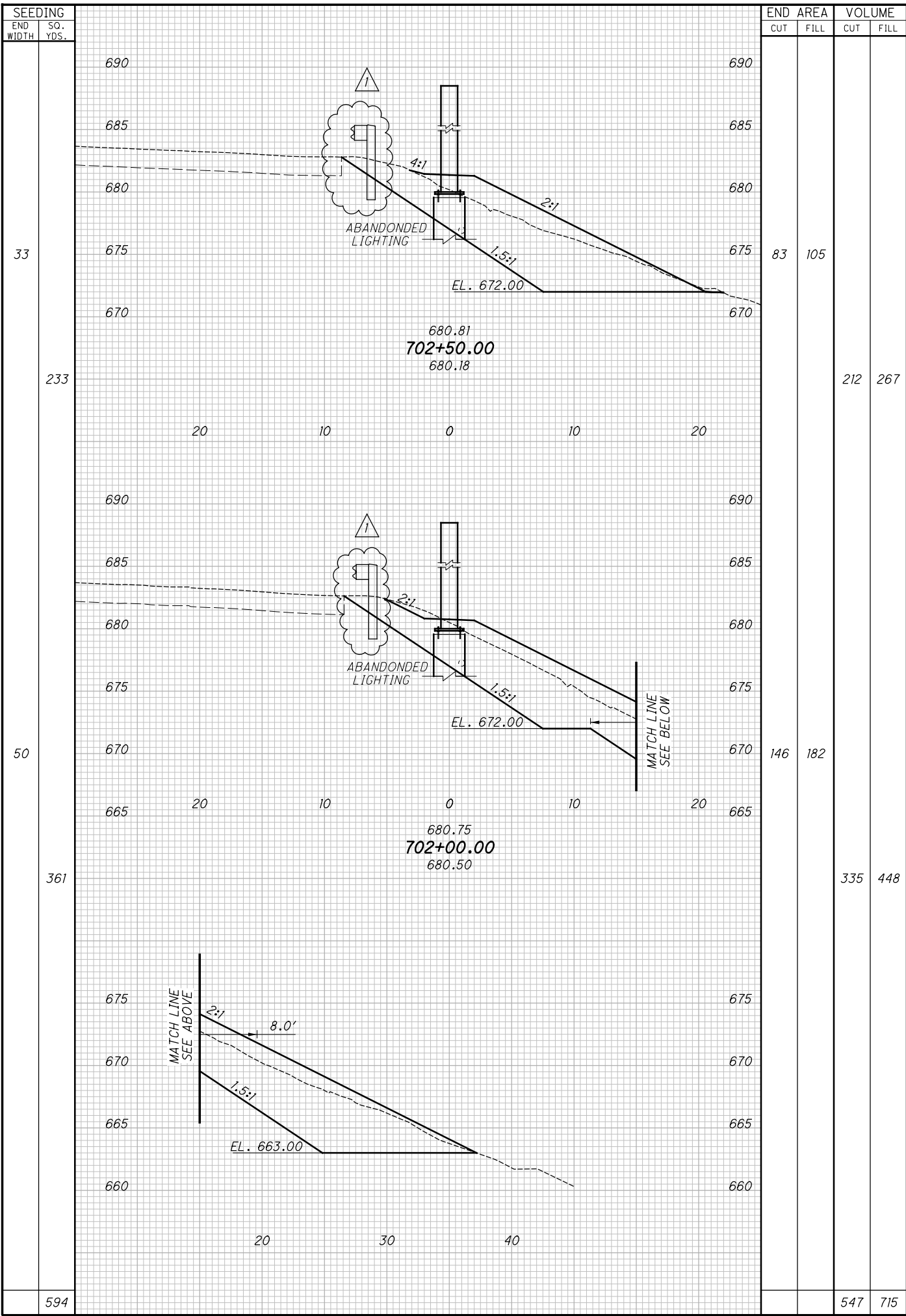


STATION	END AREA		VOLUME		CALCULATED KRM	CHECKED SWC
	CUT	FILL	CUT	FILL		
86						
478						
85						
0						
478						

**CROSS SECTIONS WHITEACRE BARRIER 1
STA. 700+00.00 TO STA. 701+50.00**

**LUC-475 / 23-9.54
/ 9.63 NOISEWALL**

P:\03647_LUC23_NOISEWALL\Design\Roadway\Sheets\03647XS701.dgn XS_SHEET_temporary_model_name_2 9/10/2020 10:59:54 AM scorcoran



LUC-475 / 23-9.56 / 9.63 NOISEWALL		NO.	DATE	DESCRIPTION
1	9/10/20			

**CROSS SECTIONS WHITEACRE BARRIER 1
STA. 702+00.00 TO STA. 704+00.00**

**LUC-475 / 23-9.54
/ 9.63 NOISEWALL**