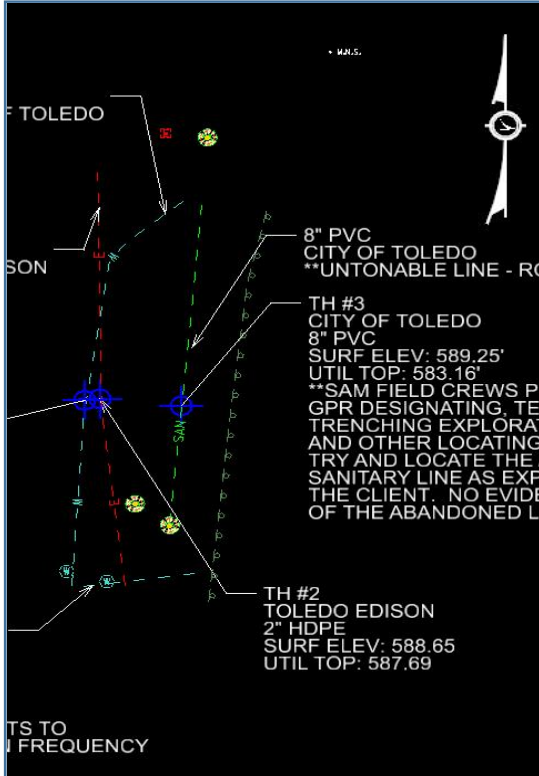




Surveying And Mapping, LLC (SAM)  
 929 Eastwind Drive, Suite 201  
 Westerville, Ohio 43081  
 Office: 614-899-0079

**SUE QUALITY LEVEL A  
 TEST HOLE #2  
 TOLEDO, OHIO**

<b>Project:</b>	<b>LUC 25 ANTHONY WAYNE TRAIL</b>	<b>Date Performed:</b>	<b>10/12/2022</b>
<b>SAM, LLC Project #</b>	<b>1022073581</b>	<b>Client:</b>	<b>Ohio Department of Transportation</b>
Project Location:	LUCAS COUNTY	Surface Material:	NATURAL GROUND
Utility Location:	3223 ERAWA DR	Surface Elevation:	588.65
Utility Sta./Offset:	N/A	Surface Condition:	POOR
Record Utility:	ELECTRIC	Trench Material:	SOIL
Utility Owner:	TOLEDO EDISON	Utility Bedding Material:	N/A
Contact:	N/A	<b>Utility Found:</b>	<b>2" HDPE</b>
Phone/Email:	N/A	<b>Utility Condition:</b>	<b>GOOD</b>
Field Crew:	JN/NB	<b>Utility Depth (Top):</b>	<b>0.96'</b>
Field Conditions:	SUNNY/COLD		



**PROJECT CONTROL**

Coordinates shown are based on Ohio State Plane NAD 83, South Zone, Grid, derived from GPS observations utilizing the Trimble Network.

**UTILITY CENTERLINE COORD.**

<b>NORTHING</b>	<b>709331.783</b>
<b>EASTING</b>	<b>1668716.206</b>
<b>TOP ELEV.</b>	<b>587.69</b>

**Comments**

- 1.SAM, LLC laid out this Test Hole by designating the Electric line before hand digging the utility.
2. No other utilities were found during excavation
3. All excavation was performed with VAC truck
4. The Test Hole was backfilled with Excavated Material.
5. Location and elevation determined by satellite observations utilizing ODOT VRS.
6. Direct measure to top of pipe utilizing ODOT VRS.